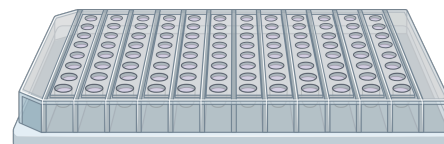
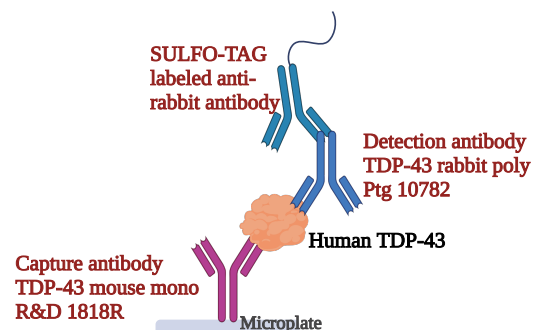


Bind Dynabeads with 4 µg of Ms TDP-43 Ab/ IgG, wash, add 200µL of 1:4 plasma, deplete overnight at 4°C with high agitation



Remove supernatant from beads, load on an MSD plate coated with Ms mono TDP-43 capture antibody (1818R)



Assess depletion efficiency with Rb poly 10782 detection antibody