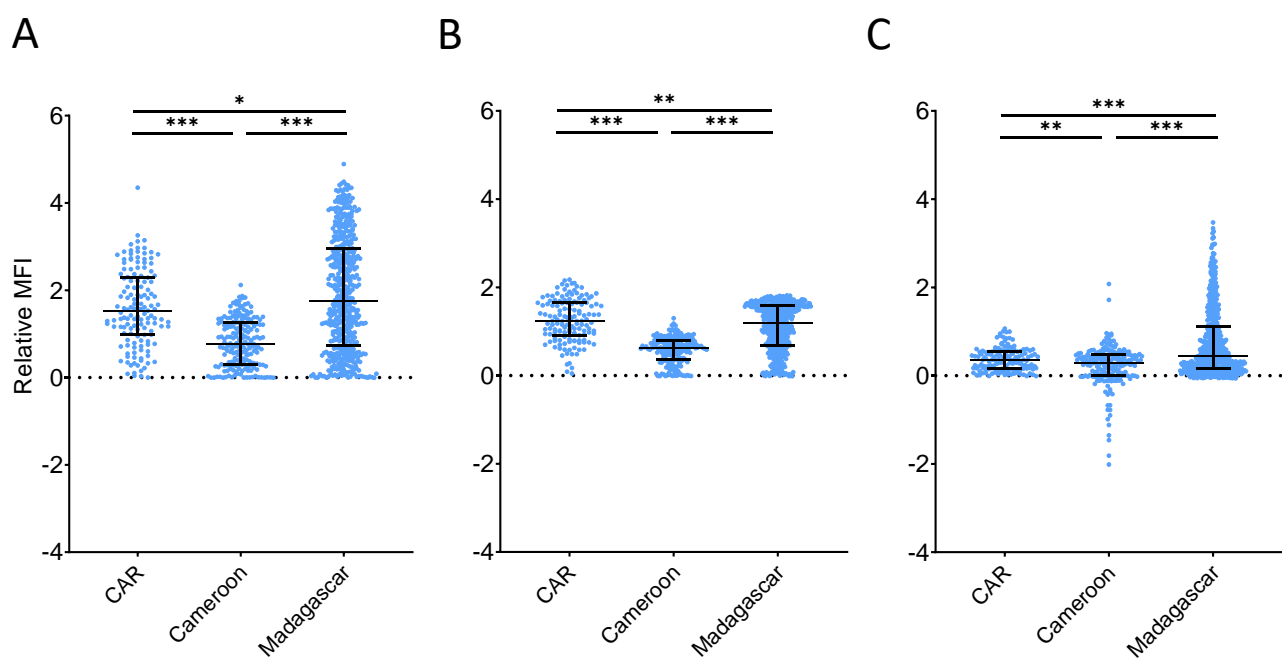
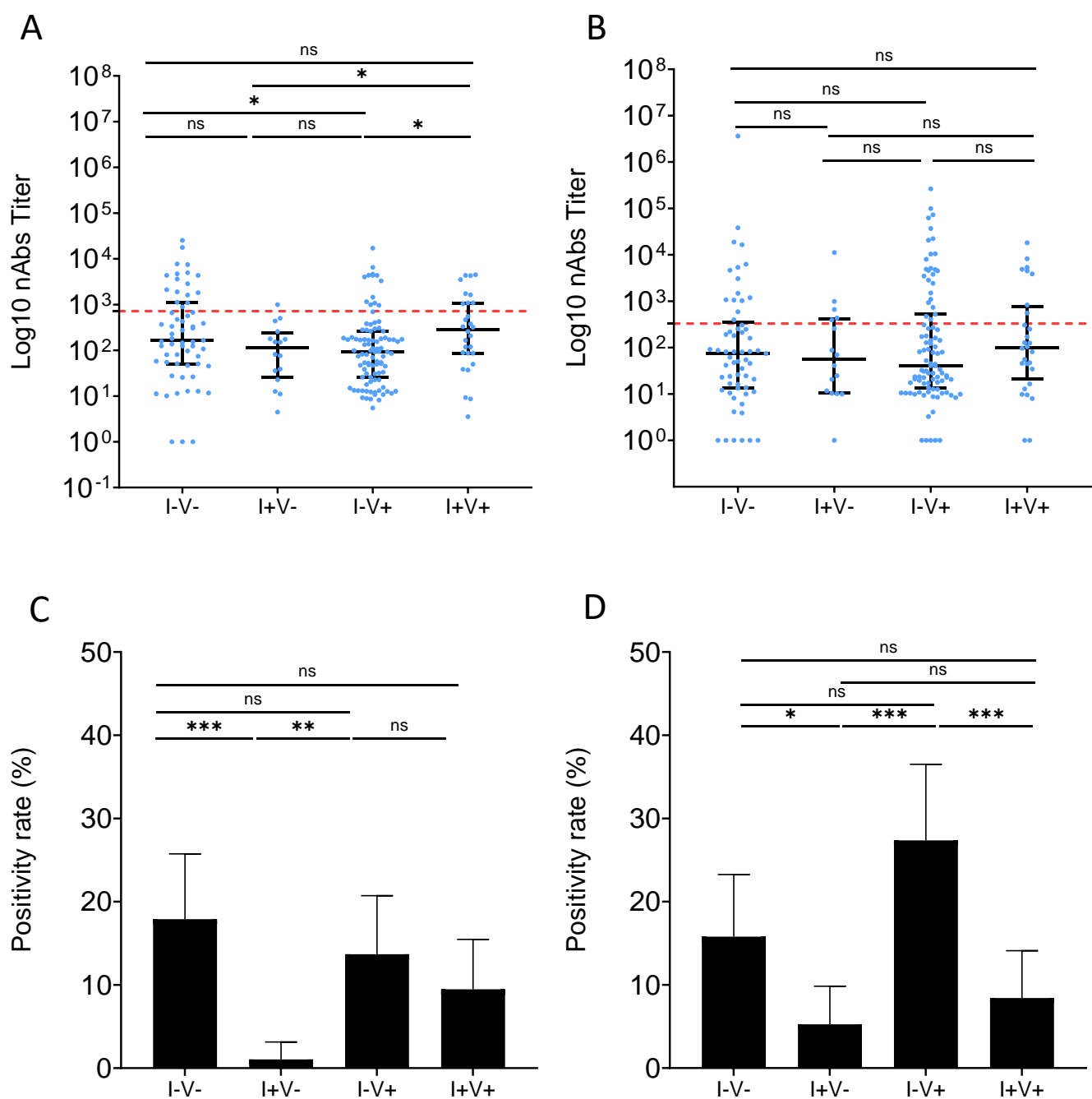


**Figure S1: nAb responses in I+V- HCWs in Madagascar according reported wave of infection.** (A) Percentage of unvaccinated HCWs who declared having been infected only once: during waves 1, 2 and 3. (B-C) SARS-CoV-2 specific nAb titers according to the declared wave of infection in individuals infected just once. (B) against W, (C) against BA.2. \* *p*-value <0.05; \*\*\* *p*-value <0.0001, ns: non significant



**Figure S2: anti-S1, anti-RBD and anti-NP IgG quantification from HCW serum samples.** Dotplot representing Luminex Median Fluorescence Intensities (MFI) for specific IgG anti-S1, anti-RBD, anti-NP between countries. Data were compared using the Mann-Whitney test. Each dot represents an independent sample. A: IgG anti-S1, B: IgG anti-RBD, C: IgG anti-NP. \*  $p$ -value <0.05; \*\*  $p$ -value <0.001; \*\*\*  $p$ -value <0.0001; ns: non significative



**Figure S3: Neutralizing antibody responses in the Cameroonian HCW sub-populations.** (A-B) SARS-CoV-2 specific nAb titers according to the type of immunization. (A) against WT, (B) against BA.2. populational groups are indicated on the X axis and neutralization titers on the Y axis. Data were compared using the Mann-Whitney test. Each dot represents an independent sample. (C-D) Percentage of individuals having nAb titers above the calculated threshold. (C) against WT, (D) against BA.2. Data were compared using the Fischer's exact test. \* *p*-value <0.05 ; \*\* *p*-value <0.001; \*\*\* *p*-value <0.0001; ns: non significative