

Article

Not peer-reviewed version

WAVE2 is a vital regulator in myogenic differentiation of progenitor cells through the mechanosensitive MRTFA-SRF axis

[Mai Thi Nguyen](#) , [Quoc Kiet Ly](#) , [Hyun-Jung Kim](#) , [Wan Lee](#) *

Posted Date: 15 December 2023

doi: 10.20944/preprints202312.1185.v1

Keywords: WAVE2; myogenesis; differentiation, MRTFA; SRF; proliferation



Preprints.org is a free multidiscipline platform providing preprint service that is dedicated to making early versions of research outputs permanently available and citable. Preprints posted at Preprints.org appear in Web of Science, Crossref, Google Scholar, Scilit, Europe PMC.

Copyright: This is an open access article distributed under the Creative Commons Attribution License which permits unrestricted use, distribution, and reproduction in any medium, provided the original work is properly cited.

Article

WAVE2 Is a Vital Regulator in Myogenic Differentiation of Progenitor Cells through the Mechanosensitive MRTFA-SRF Axis

Mai Thi Nguyen ¹, Quoc Kiet Ly ¹, Hyun-Jung Kim ¹ and Wan Lee ^{1,2,*}

¹ Department of Biochemistry, Dongguk University College of Medicine, 123 Dongdae-ro, Gyeongju 38066, Republic of Korea; nguyenmainhp@gmail.com (M.T.N.); kietly1501@gmail.com (Q.K.L.); hunjung612@naver.com (H.-J.K.)

² Channelopathy Research Center, Dongguk University College of Medicine, 32 Dongguk-ro, Goyang 10326, Republic of Korea

* Correspondence: wanlee@dongguk.ac.kr; Tel.: +82-54-770-2409

Abstract: Skeletal myogenesis is an intricate process involving the differentiation of progenitor cells into myofibers, which is regulated by actin cytoskeletal dynamics and myogenic transcription factors. Although recent studies have demonstrated the pivotal roles of actin-binding proteins (ABPs) as mechanosensors and signal transducers, the biological significance of WAVE2 (Wiskott-Aldrich syndrome protein family member 2), an ABP essential for actin polymerization, in myogenic differentiation of progenitor cells has not been investigated. Our study provides important insights into the regulatory roles played by WAVE2 in the myocardin-related transcription factor A (MRTFA)-serum response factor (SRF) signaling axis and differentiation of myoblasts. We demonstrate that WAVE2 expression is induced during myogenic differentiation and plays a pivotal role in actin cytoskeletal remodeling in C2C12 myoblasts. Knockdown of WAVE2 in C2C12 cells reduced filamentous actin levels, increased globular actin accumulation, and impaired the nuclear translocation of MRTFA. Furthermore, WAVE2 depletion in myoblasts inhibited the expression and transcriptional activity of SRF and suppressed cell proliferation in myoblasts. Consequently, WAVE2 knockdown suppressed myogenic regulatory factors (i.e., MyoD, MyoG, and SMYD1) expressions, thereby hindering the differentiation of myoblasts. Thus, this study suggests that WAVE2 is essential for myogenic differentiation of progenitor cells by modulating the mechanosensitive MRTFA-SRF axis.

Keywords: WAVE2; myogenesis; differentiation; MRTFA; SRF; proliferation

1. Introduction

Skeletal muscle is essential for diverse body functions, such as energy metabolism, locomotion, and respiration [1,2]. The maintenance of skeletal muscle homeostasis depends on the myogenic potential of progenitor cells, which is responsible for myofiber formation, regeneration, and growth [3]. Skeletal myogenesis is meticulously orchestrated by complex multi-stage sequential processes of cell proliferation, cell cycle withdrawal, activation of myogenic transcriptional factors, and morphological transformations involving differentiation and fusion of myoblasts [3]. Hence, impaired skeletal myogenesis leads to muscle wasting, characterized by reductions in muscle mass, strength, and regenerative capability [4,5]. Over the last decade, studies on actin cytoskeleton dynamics have been highlighted as the critical regulatory mechanism of skeletal myogenesis via mechanotransduction, converting mechanical signals into biochemical responses [6,7]. Thus, actin remodeling facilitates physical changes necessary for cytoskeletal reconfiguration and triggers mechanotransduction, impacting diverse transcriptional programs and gene expression for myogenesis [7,8]. In this aspect, it is interesting that various actin-binding proteins (ABPs) have been recently recognized as critical players in skeletal myogenesis through mechanotransduction [9–11].

The dynamic processes involving the assembly and disassembly of actin filaments are intimately linked to the specific transcriptional programs for myogenic gene expression in progenitor cells [9–11]. As a member of the myocardin-related transcription factor (MRTF) family, MRTFA is an actin-sensitive co-activator of serum response factor (SRF), and it serves as a mechanosensor that responds to actin remodeling between and filamentous actin (F-actin) and globular actin (G-actin) [12,13]. The actin remodeling-MRTF-SRF signaling axis regulates numerous biological functions, including the circadian clock, neural development, myofibroblast generation, myoblast differentiation, and myotube formation [14–17]. Interestingly, MRTF shuttles between the cytoplasm and nucleus and activates target gene expression by binding to a conserved CArG box in the target gene promoter region together with SRF [12,13]. Since MRTFA has three RPEL repeats that function as G-actin sensors, augmentation of cytoplasmic G-actin prevents the nuclear import of MRTFA and consequently inhibits SRF-mediated gene expression [18,19]. On the other hand, enhanced F-actin in cytoplasm facilitates the nuclear translocation of MRTFA from cytoplasm, leading to a subsequent increase in myogenic gene expression through SRF activation [18,19]. Hence, several ABPs actively involved in actin remodeling play an essential role in myogenesis [20–22], and disruption of actin filaments impairs differentiation and myotube formation in the progenitor cells [23–25].

WAVE2 (Wiskott-Aldrich syndrome protein family member 2), also known as N-WASP (Neuronal Wiskott-Aldrich syndrome protein), is an ABP that acts as a critical regulator of actin polymerization by promoting the formation of branched actin networks [26]. WAVE2 interacts with the Arp2/3 complex and facilitates the nucleation of new actin filaments [27,28]. This process is vital for the formation of actin-rich structures, such as lamellipodia and filopodia, which are essential for cell migration and morphology [28,29]. Recent studies have revealed that knockdown or inhibition of cellular WAVE2 significantly affects actin dynamics and cellular behavior, including cell adhesion, migration, and development [30–32]. Therefore, the suppression of WAVE2 expression promotes actin depolymerization and increases G-actin levels in the cytoplasm [31,33,34]. However, although WAVE2 has been shown to regulate actin polymerization [27–29], its functional significance in regulating the MRTFA-SRF signaling axis and myogenic differentiation has not been explored.

This study aimed to investigate the role played by WAVE2 in the myogenic differentiation of progenitor cells. We investigated how WAVE2 expression is modulated during the differentiation of C2C12 myoblasts and evaluated the effect of WAVE2 knockdown on actin cytoskeleton, myogenic regulatory factors expression, myoblast differentiation, and myotube formation in C2C12 cells. Furthermore, we attempted to determine the mechanisms that cause impaired myogenic differentiation in WAVE2-depleted cells by analyzing the nuclear localization of MRTFA, SRF activation, cell proliferation, and cell cycle progression. Our results demonstrate that WAVE2-mediated actin remodeling is crucial for myogenic differentiation by modulating the MRTFA-SRF axis.

2. Materials and Methods

2.1. Cell Culture and Differentiation

C2C12 cells, an immortalized mouse myoblast cell line, were cultured in a growth medium (GM) containing DMEM supplemented with 10% FBS and 100 IU/mL penicillin/streptomycin (Gibco, Carlsbad, CA, USA) and maintained at 37°C in a 5% carbon dioxide atmosphere. Cells were plated into 35 mm plates at a density of 1.3×10^5 cells for 24h before transient transfection. After reaching ~90% confluence, differentiation was initiated by replacing the GM with DMEM containing 2% horse serum (differentiation media, DM, Gibco).

2.2. Transfection of Oligonucleotides

Small interfering RNA molecules directed against WAVE2 (siWAVE2) and the scrambled RNA negative control (scRNA) were obtained from Genolution (Seoul, Korea). To determine the functional role of WAVE2, C2C12 cells were transfected with siWAVE2 or scRNA at 200 nM using

Lipofectamine 2000 (Invitrogen, Carlsbad, CA, USA), according to the manufacturer's instructions. All sequences are listed in Table S1.

2.3. *qRT-PCR*

Total RNA was extracted with Qiazol reagent (Qiagen, Hilden, Germany), and reverse transcription was performed with a miScript II RT Kit (Qiagen) to synthesize cDNA. Relative mRNA expressions were determined via *qRT-PCR* using SYBR Green I (Promega, Madison, WI, USA) in a LightCycler 480 (Roche Applied Science, Basel, Switzerland). Results were normalized versus U6 and calculated using the $2^{-\Delta\Delta C_t}$ method. RT-*qPCR* assays were conducted in triplicate. Primer sequences and conditions are presented in Table S2.

2.4. *Dual-Luciferase Assay*

The promoter sequence of SMYD1, including the CARG box sequence for immediate early sites upstream of the SMYD1 gene, was constructed in the pBasicGL3 vector (Promega) to generate a luciferase reporter with primer sequences as described in Table S3. For the luciferase assay, C2C12 cells were cultured in 12-well plates in GM. The internal control pRLSV40P vector, containing the SV40 promoter for the Renilla luciferase gene, was co-transfected with the luciferase reporter vector and scRNA or siWAVE2 using Lipofectamine 2000 reagent (Invitrogen) in serum-free DMEM, according to the manufacturer's instructions. After 6 h of transfection, the medium was replaced with GM. Cells were harvested after 24 h of transfection, and luciferase activities were determined using the luciferase assay system (Promega).

2.5. *Preparation of Cytoplasmic and Nuclear Fractions*

Cytoplasmic and nuclear fractionations from C2C12 cells were carried out after 24 h of transfection using NE-PER™ Nuclear and Cytoplasmic Extraction Reagents (Thermo Fisher Scientific, USA). Briefly, C2C12 cells were harvested using trypsin EDTA (Gibco) and incubated in CER I reagent (100 μ l) on ice for 30 min. CER II reagent (5.5 μ l) was added for the last 1 min, and the samples were centrifuged at 12,000 rpm for 15 min at 4°C. Supernatants were collected as cytoplasmic fractions, while pellets (the nuclear fractions) were suspended in 50 μ l of NER solution. Equal volumes of cytoplasmic and nuclear fractions were immunoblotted, as described below.

2.6. *Immunoblot Analysis*

Cells were lysed using lysis buffer (1% phosphatase inhibitor cocktail II, 0.2 mM PMSF, 2% Triton-X in PBS (Sigma-Aldrich, St. Louis, MO, USA)) to obtain total protein. Lysates were cleared by centrifuging at 13,000 rpm for 5 min at 4°C. Then, equal amounts of proteins were denatured at 100°C in SDS loading buffer for 10 min. Protein samples (20 μ g/well) were subjected to 10% or 8% SDS-PAGE and then were transferred to nitrocellulose membranes (Amersham Biosciences, Piscataway, NJ, USA). Membranes were blocked for 1 h at RT with 5% skim milk in TTBS solution (0.5% TBS-Tween 20), incubated overnight with primary antibodies at 4°C (Table S4), washed for 6x5 min with TTBS, and incubated with secondary antibody (1: 10 000 dilution). Finally, blots were developed using Femto reagent (Thermo Fisher Scientific) and processed using software that measured the densities of protein bands (Fusion Solo, Paris, France).

2.7. *Immunofluorescence Analysis*

For immunocytochemistry staining, cells were fixed with 4% paraformaldehyde for 10 min and washed thrice with cold PBS. Samples were then permeabilized with 0.3% Triton X-100 for 15 minutes, washed with PBS, and incubated for 2 h with a blocking solution containing 3% BSA. Immunocytochemistry was performed by incubating samples overnight with primary antibodies (anti-MyHC at 1:100 and anti-WAVE2 at 1:200) at 4°C and then with secondary antibody (Alexa 488, Invitrogen) for 1 h. FITC-coupled phalloidin (Sigma) was used for F-actin staining, and DNase-I conjugated with Alexa 488 (Sigma) was used for G-actin staining after fixation. Hoechst 33342

(Invitrogen) was applied to visualize cell nuclei. Fluorescence images were captured using a Leica fluorescence microscope (Microsystems, Mannheim, Germany). Images were taken randomly in at least five areas for each experiment, and experiments were performed at least three times independently. Myotube widths, MyHC-positive areas, and myotube numbers were determined using Image J software. Differentiation and fusion indexes were calculated as previously described [22].

2.8. Cell Proliferation Analysis

The Click-iT™ EdU Cell Proliferation Kit (Invitrogen) was used to measure cell proliferation. Briefly, cells were labeled with EdU (10 μ M) in GM for 4 h and then fixed using the 4% paraformaldehyde described above. A Click-iT® reaction cocktail (300 μ l) was then added, and cells were counterstained with Hoechst 33342 for 15 min. Images were captured using a Leica fluorescence microscope. To determine the proportions of EdU-positive cells, total cell and EdU-positive cell numbers were counted in five randomly chosen images. The analysis was conducted independently at least three times.

2.9. Flow Cytometry

Transfected cells were collected using trypsin EDTA (Gibco), centrifuged at 3,000 rpm for 5 min at 4°C, and washed three times with PBS buffer. After removing the supernatant, cells were fixed overnight with 70% ethanol at 4°C. Cell suspensions were stained using a Cell Cycle kit (0.5 ml; C03551, Beckman Coulter, USA) for 20 min in the dark. Cell cycle assays were determined using a CytoFLEX instrument (Beckman Coulter, USA).

2.10. Statistical Analysis

The analysis was performed using the one-way independent Student's *t*-test for unpaired data. Results are presented as the means \pm standard errors of at least three independent experiments.

3. Results

3.1. WAVE2 Expression Increases during Myogenic Differentiation

Actin dynamics modulated by ABPs play a crucial role in skeletal muscle myogenesis through mechanotransduction, which induces progenitor cell proliferation, differentiation, and morphogenesis [9–11]. Before investigating the impact of WAVE2 on myoblast differentiation, we analyzed alterations in WAVE2 expression during the differentiation of C2C12 myoblasts using immunoblots (Figure 1A,B). Under our experimental conditions for differentiation, the expression levels of MyoD, which represent an early myogenic commitment, declined steadily after the induction of differentiation. Conversely, the levels of MyoG, indicating the initiation of differentiation, progressively increased and then gradually decreased after differentiation day 3. Interestingly, the protein levels of WAVE2 were significantly induced after differentiation initiation (Figure 1A,B). In addition, we confirmed the upregulation of WAVE2 during differentiation immunocytochemically using anti-MyHC and anti-WAVE2 antibodies and subsequent image analysis (Figure 1C,D). Since WAVE2 knockdown inhibited the transcriptional activity of SRF and cell proliferation, a condition that hinders myogenesis [35], our results implicate that WAVE2 might be essential for the myogenic differentiation of progenitor cells.

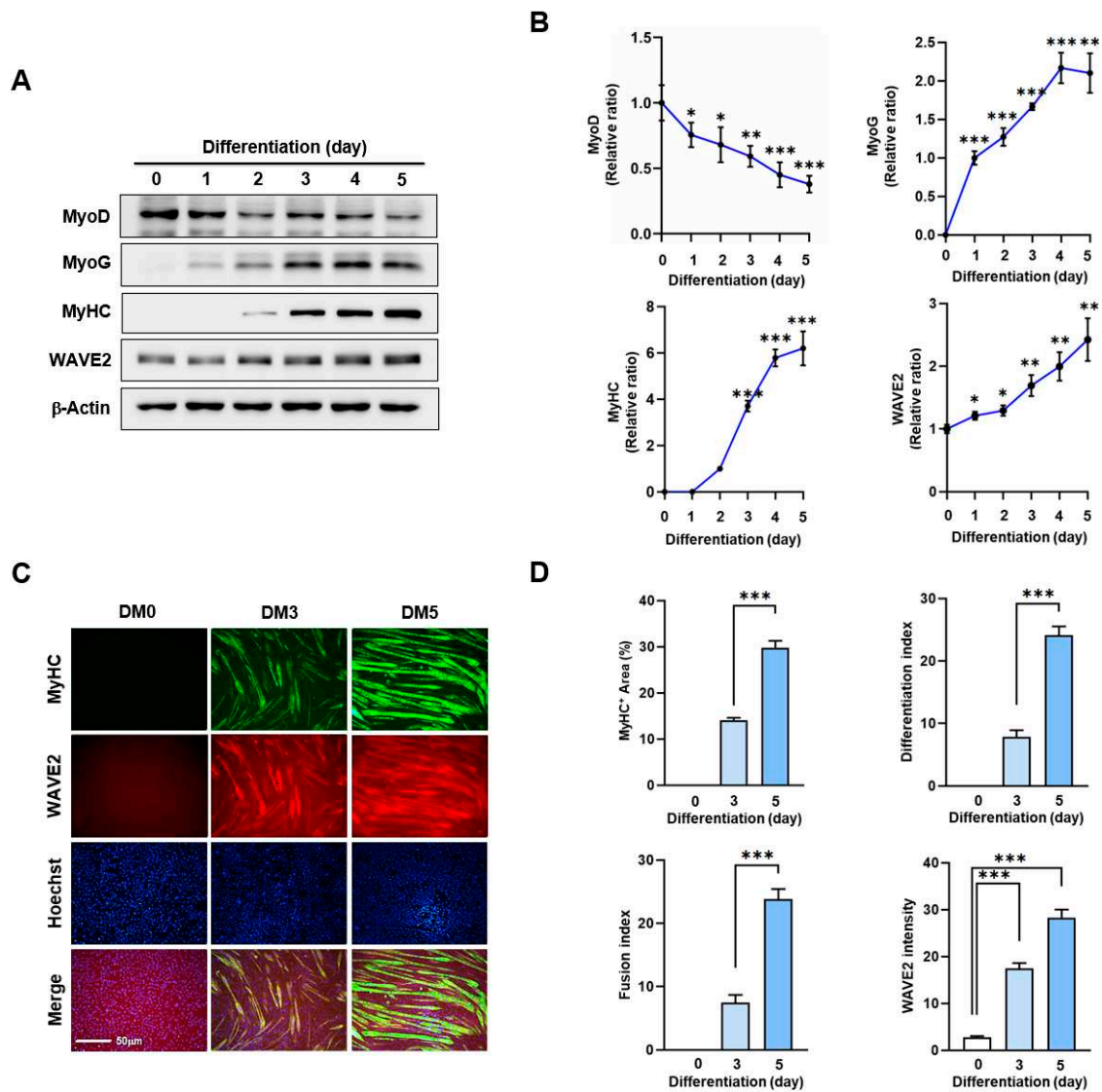


Figure 1. WAVE2 expression is induced during myoblast differentiation. C2C12 cells were allowed to differentiate for up to five days. (A) MyoD, MyoG, MyHC, and WAVE2 expressions were determined by immunoblotting. (B) Protein levels in (A) were measured using densitometry and normalized against β-Actin. Results are shown as relative ratios, with the degree of differentiation on day 0 (MyoD, WAVE2, and MyoG) or day 2 (MyHC) set to one. (C) Cells were subjected to immunostaining with anti-MyHC and anti-WAVE2 antibodies, followed by Alexa 488 antibody (green) and Hoechst 34452 (blue) nuclear counterstain after three and five days of differentiation. Scale bar: 50 μm. (D) Myotubes are quantified using MyHC-positive cells, WAVE2 intensities, differentiation and fusion indexes, and myotube widths. Results are presented as means ± standard errors (n > 3). Significance levels are represented by *, P<0.05; **, P<0.01; ***, P<0.001.

3.2. WAVE2 Is Required for Myogenic Differentiation

Given the canonical function of WAVE2 in actin cytoskeletal dynamics and the upregulation of its expression during myoblast differentiation (Figure 1), we hypothesized that WAVE2 depletion might suppress the protein expressions of myogenic regulatory factors and consequently impede myoblast differentiation. Since WAVE2 knockdown inhibited the transcriptional activity of SRF and cell proliferation, a condition that hinders myogenesis [35], To deplete WAVE2, we first transfected C2C12 cells with scRNA or two different siRNAs against murine WAVE2 (200 nM of siWAVE2-1 or siWAVE2-2) and assessed the expression levels of WAVE2 after 24 h. Transfection of siWAVE2-2

reduced WAVE2 protein levels by approximately 60% compared to the scRNA control as determined by immunoblot intensities (Figure 2A). However, transfection with siWAVE2-1 did not significantly suppress WAVE2 expression, and therefore, we used siWAVE2-2 (siWAVE2) to knock down WAVE2 protein in this study. The expressions of myogenic regulatory factors were determined on differentiation days 0, 3, and 5 in C2C12 myoblasts transfected with scRNA or siWAVE2. The levels of MyoD and MyoG (Figure 2B,C) were significantly reduced by siWAVE2 transfection, and consequently, differentiation marker MyHC was markedly declined in siWAVE2-transfected cells compared to scRNA controls (Figure 2B,C). It should be underscored that MyoD, as one of the SRF target genes [36], determines the differentiation potential and triggers MyoG expression to drive the differentiation of myoblasts [37]. Therefore, this result suggests that WAVE2 is crucial for the modulation of myogenic regulatory factors, i.e., MyoD and MyoG, expression.

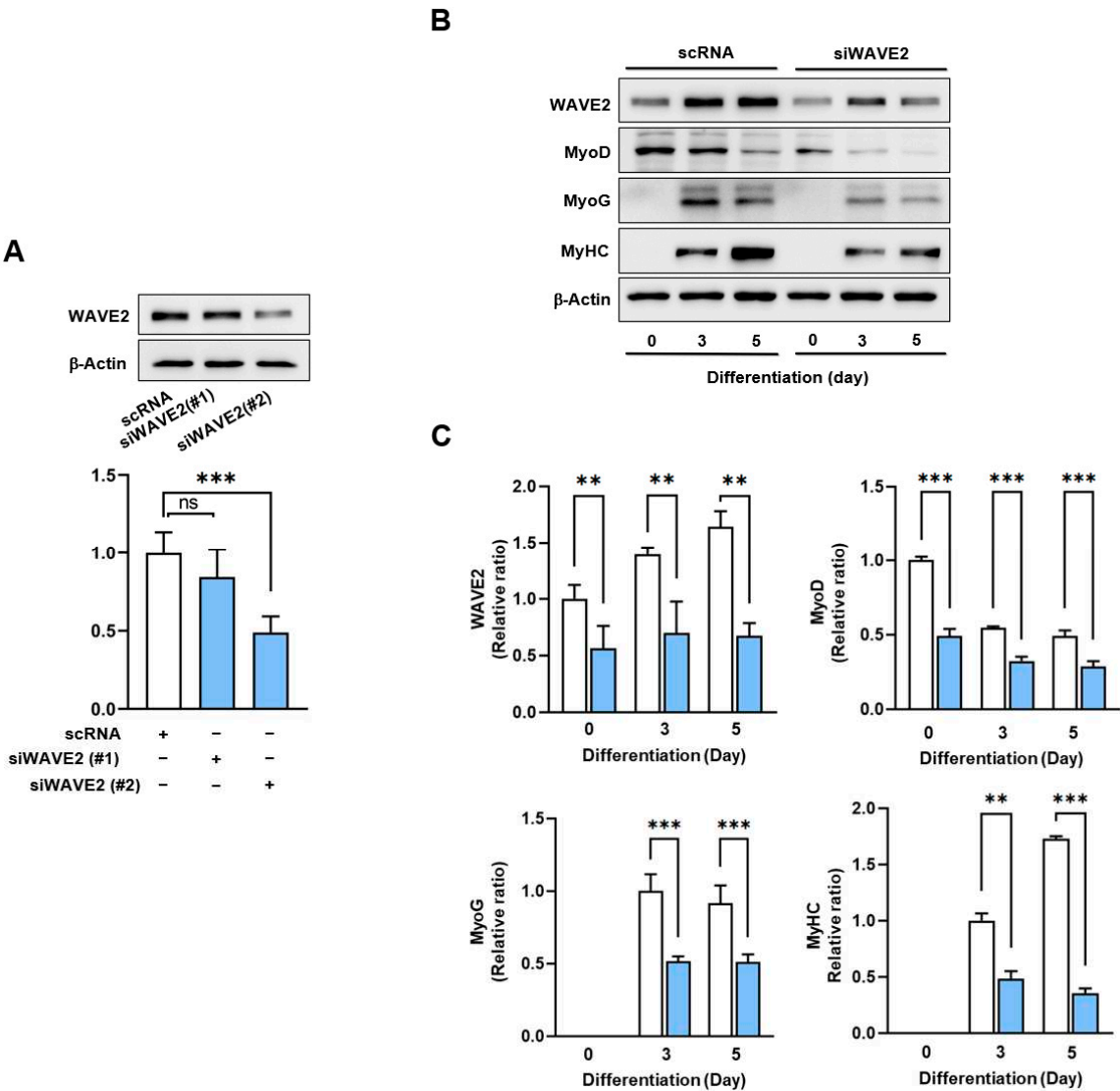


Figure 2. Depletion of WAVE2 suppresses myogenic regulatory factors. (A) WAVE2 in C2C12 cells was determined by immunoblotting 24 hr after transfection with 200 nM of scRNA control, siWAVE2-1 or -2. (B) C2C12 myoblasts were differentiated for three or five days after transfecting with scRNA or siWAVE2 (200 nM). WAVE2, MyHC, MyoD, and MyoG expressions were determined by immunoblotting. (C) Protein levels in (B) were measured using densitometry and normalized against β-Actin. Results are shown as relative ratios, with the degree of differentiation on day 0 (WAVE2 and MyoD) or day 3 (MyoG and MyHC) set to one. Results are presented as means ± standard errors (n > 3). Statistical significance is indicated by **, p < 0.01; ***, p < 0.001 vs. scRNA.

Next, to investigate whether the knockdown of WAVE2 inhibits the differentiation of progenitor cells, C2C12 cells were differentiated for five days after transfection with scRNA or siWAVE2. Myoblast differentiation and fusion were then analyzed by immunocytochemistry and image analysis. As shown in Figure 3A,B, depletion of WAVE2 was found to significantly hinder myogenic differentiation, as evidenced by reduced MyHC-positive cell areas, differentiation and fusion indexes, and myotube widths. Thus, the results of this study demonstrate the essential role played by WAVE2 during the differentiation and fusion of progenitor cells.

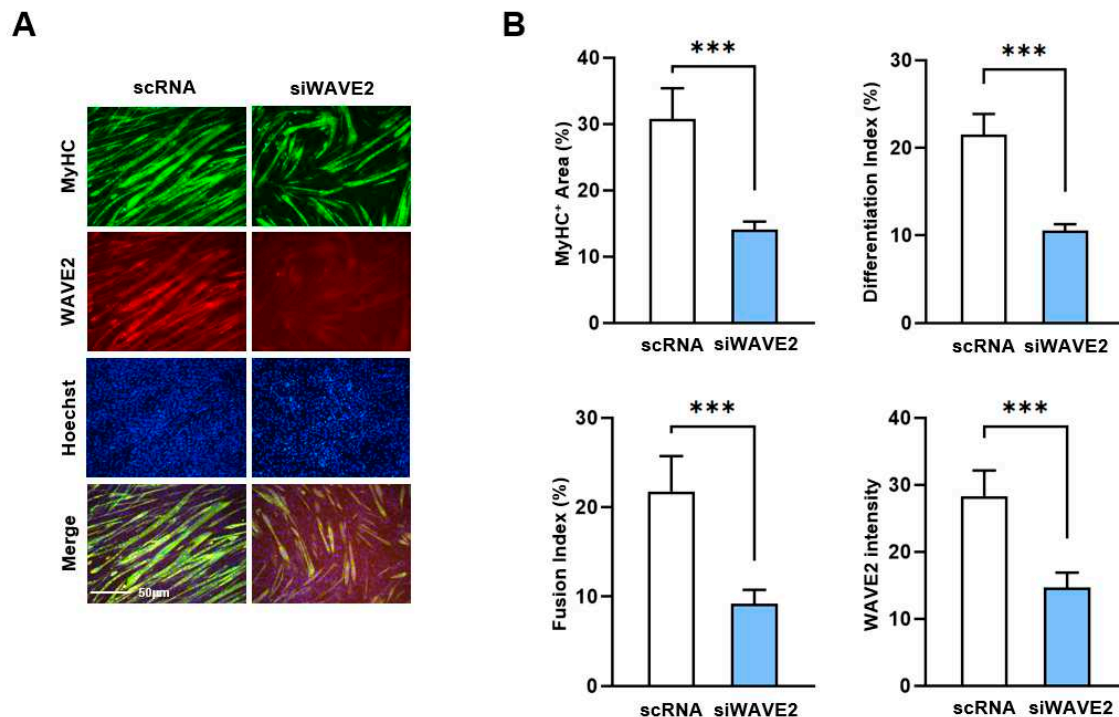


Figure 3. Depletion of WAVE2 inhibits differentiation and fusion of myoblasts. C2C12 myoblasts were differentiated after transfecting with scRNA or siWAVE2 (200 nM). (A) After five days of differentiation, cells were subjected to immunostaining with anti-MyHC and anti-WAVE2 antibodies, and Hoechst 34452 (blue) was used for nucleus staining. Scale bar: 50 μ m. (B) Myotubes are quantified using MyHC-positive cells, WAVE2 intensities, differentiation and fusion indexes, and myotube widths. Results are presented as means \pm standard errors ($n > 3$). Statistical significance is indicated by ***, $p < 0.001$ vs. scRNA.

3.3. WAVE2 Knockdown Reduces F-Actin and Nuclear MRTFA Levels

As WAVE2 knockdown suppresses myogenic differentiation, we investigated the mechanism by which it might contribute to the process. Previous reports have shown that WAVE2 knockdown facilitates actin depolymerization and increases the G-actin/F-actin ratio [34,38,39], which is known to prevent the nuclear import of MRTFA [40,41]. Hence, we hypothesized that WAVE2 knockdown might reduce nuclear MRTFA by enhancing G-actin accumulation in the cytoplasm of myoblasts. Under these experimental conditions, we determined whether WAVE2 knockdown influences F-actin levels in C2C12 myoblasts. As shown in Figure 4A, siWAVE2 markedly reduced F-actin levels in myoblasts by ~40% versus scRNA controls, as assessed by phalloidin staining in immunocytochemistry. Flow cytometry analysis confirmed that the knockdown of WAVE2 reduced cellular F-actin levels and increased G-actin levels, indicating an increase in actin filament depolymerization (Figure 4B). Considering that the quantity of actin from any treatment was equal according to immunoblot analysis, the reduction in F-actin contents by siWAVE2 seemed to be due to the insufficiency of actin polymerization caused by WAVE2 suppression.

It has been well established that changes in cellular G-actin levels regulate the MRTFA-SRF signaling axis, which controls myogenic gene expression and differentiation [18,19]. Therefore, we next determined whether WAVE2 knockdown could reduce the nuclear levels of MRTFA in C2C12 myoblasts. As expected, transfection with siWAVE2 dramatically decreased MRTFA localization in the nuclei and concomitantly increased its cytoplasmic retention (Figure 4C,D). Furthermore, siWAVE2 markedly suppressed the nuclear levels of SRF protein (Figure 4C,D). Thus, these results demonstrate that the knockdown of WAVE2 leads to an increase in cytoplasmic G-actin levels, which in turn inhibits the translocation of MRTFA from the cytoplasm to the nucleus.

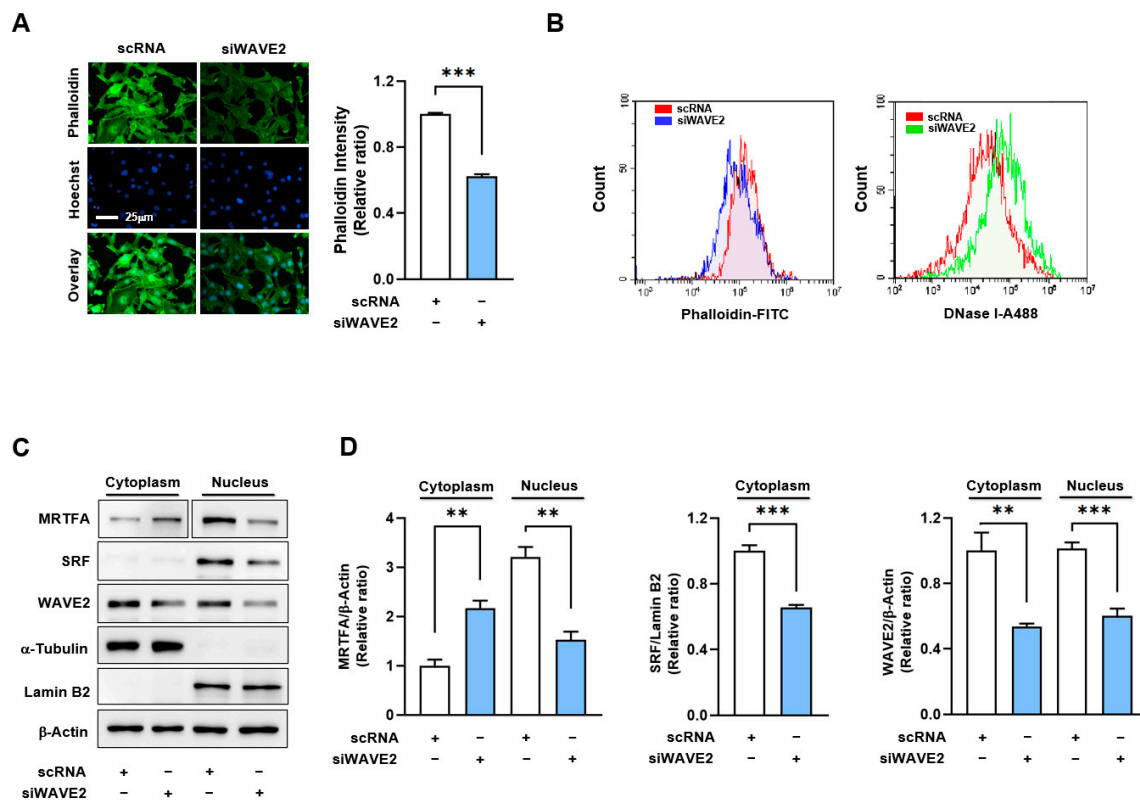


Figure 4. WAVE2 knockdown reduces F-actin and nuclear MRTFA levels. (A) Representative images showing FITC-phalloidin staining (green) for F-actin and Hoechst 34452 (blue) for the nucleus staining. Scale bar: 25 μ m. (B) F- and G-actin levels in cells stained with FITC-phalloidin and DNase I, respectively, were determined by flow cytometry. (C,D) Immunoblots showed MRTFA, SRF, and WAVE2 protein expressions in cytoplasmic and nuclear fractions of C2C12 cells after transfection with scRNA or siWAVE2. For MRTFA detection, different exposure times were required because it is distributed differently in the cytoplasm and nucleus. α -Tubulin and Lamin B2 were used as markers for cytoplasm and nucleus, respectively. Immunoblot intensities are presented as relative ratios and normalized against β -Actin or Lamin B2. Results are presented as means \pm standard errors ($n > 3$), and significance levels are represented as **, $P < 0.01$; ***, $P < 0.001$ vs. scRNA.

3.4. WAVE2 Knockdown Inhibits SRF Activity and SRF-Target Gene Expressions

The SMYD1 (a skeletal muscle-specific histone methyltransferase) gene has been known as a direct target of the MRTFA-SRF axis during skeletal myogenesis [42]. To examine the activation of SRF in WAVE2-depleted cells, SRF binding sites (the CARG box) on the promoter region of SMYD1 gene were cloned into the pGL3 luciferase reporter plasmid (Figure 5A) and then luciferase activities in the cells transfected with reporter vector (pGL3 or pGL3-SMYD1) and scRNA or siWAVE2 were analyzed using a dual luciferase assay. Interestingly, when the chimera pGL3-SMYD1 promoter containing the SRF binding site (the CARG box) was co-transfected, the luciferase activity in siWAVE2-transfected cells was significantly reduced (by ~50%) compared to scRNA controls (Figure

5B). Moreover, the transcript levels of SRF target genes, i.e., SRF itself, vinculin, and SMYD1, were markedly lower in siWAVE2-transfected C2C12 cells (Figure 5C). Thus, these results suggest that WAVE2 knockdown in myoblasts inhibits SRF transcriptional activity and the expression of SRF-target genes.

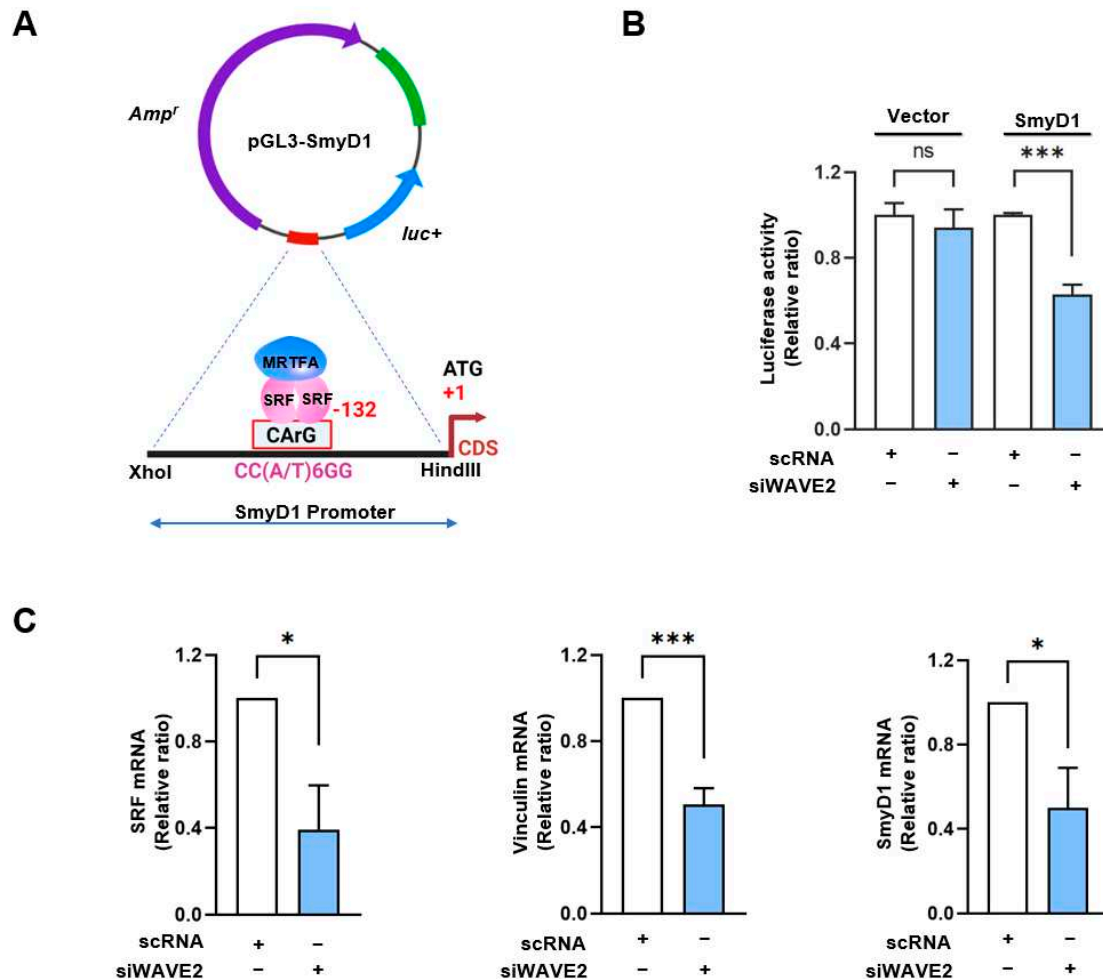


Figure 5. WAVE2 knockdown inhibits the transcriptional activity of SRF. (A) Luciferase reporter assays of truncated SMYD1 promoter constructs, including the CArG box sequence for immediate early sites upstream of the SMYD1 gene. (B) Luciferase activity was determined 24 hr after transfection with 200 nM of scRNA or siWAVE2 and normalized against pRLSV40 activity. (C) Relative expression levels of SRF, Vinculin, and SMYD1 transcripts in C2C12 cells were analyzed 24 h after transfection by *q*RT-PCR, normalized against U6. Results are presented as means \pm standard errors ($n > 3$), and significance levels are represented as *, $P < 0.05$; ***, $P < 0.001$ vs. scRNA. ns: not significant.

3.5. WAVE2 Depletion Suppresses Myoblast Proliferation

Given that the MRTFA-SRF axis serves as a critical regulator of cell cycle and proliferation through the transcriptional activation of genes associated with cell proliferation [43], we next analyzed whether WAVE2 knockdown suppresses cell proliferation in myoblasts. In order to evaluate the proliferation of the myoblasts, EdU incorporation and viable cell counts were evaluated 24 hrs after transfection of C2C12 cells with siWAVE2 or scRNA. As shown in Figure 6A–C, siWAVE2 significantly reduced the number of EdU-positive cells and viable cells compared to scRNA controls, indicating that WAVE2 depletion inhibits myoblast proliferation. In addition, we analyzed the transcript levels of proliferating cell nuclear antigen (PCNA), cyclin B1, and cyclin D1, which promote

the cell cycle and proliferation [44]. Significant decreases in the mRNA levels of PCNA, cyclin B1, and cyclin D1 were observed in the WAVE2 knockdown group compared to scRNA control (Figure 6D), which was consistent with the results of EdU incorporation and viable cell count analyses. In addition, we next investigated the effect of WAVE2 depletion on cell cycle progression. Flow cytometry analysis showed that transfection with siWAVE2 reduced the proportions of cells in the S and G2/M phases but increased the proportion in the G0/G1 phase (Figure 6E,F). Thus, these results indicate that depletion of WAVE2 impedes cell cycle progression, ultimately leading to the inhibition of myoblast proliferation.

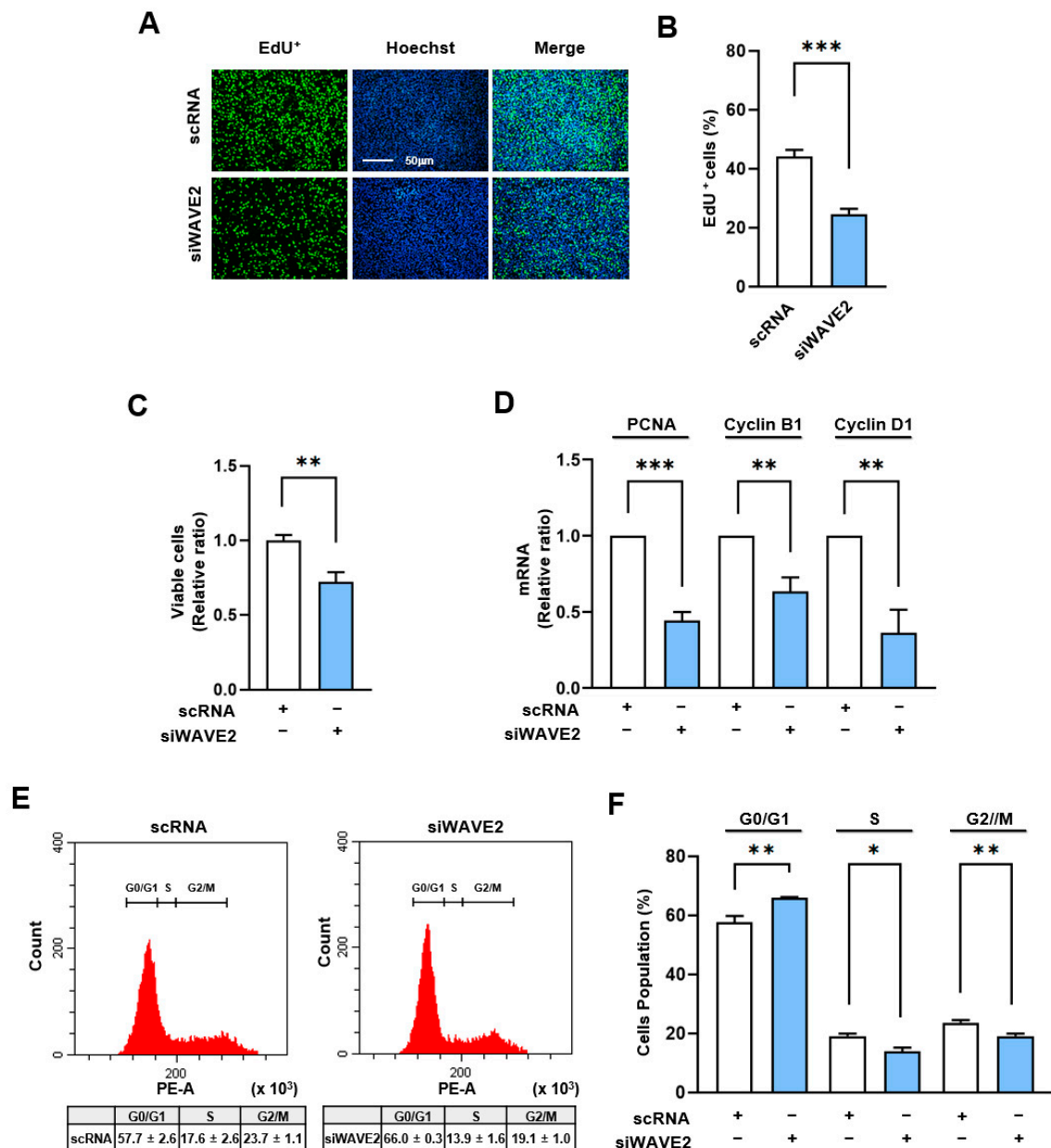


Figure 6. Depletion of WAVE2 negatively regulates cell proliferation. C2C12 cells were transfected with scRNA or siWAVE2 (200 nM), and the following analyses were performed 24 h after transfection. (A) EdU (green) was used for cell proliferation analysis to label cells undergoing DNA replication, and Hoechst 33342 (blue) was applied to nuclear staining. Scale bar: 50 μ m. (B) Proportions of EdU-positive cells were determined using ImageJ software. (C) Cell viability analysis. (D) The relative levels of PCNA, cyclin B1, and cyclin D1 in C2C12 cells were determined by *q*RT-PCR and normalized against U6. (E,F) Cell cycle analysis using flow cytometry. *q*RT-PCR and immunoblot intensities are

presented as relative ratios against scRNA controls. Results are presented as means \pm standard errors (n > 3). Significance levels are represented as *, P<0.05; **, P<0.01; ***, P<0.001 vs. scRNA.

4. Discussion

Growing evidence suggests that WAVE2 is critical for actin filament remodeling [27–29], which is associated with cell structure and function in a multifaceted manner [9,45,46]. However, the functional significance of WAVE2 in myogenic differentiation has not been explored. This study provides the following important insights into the essential roles played by WAVE2 during the differentiation and myotube formation in myoblasts: (i) the expression of WAVE2 is increased during myoblast differentiation, (ii) WAVE2 depletion impedes differentiation, myogenic regulatory factor expressions, and myotube formation in myoblasts, (iii) mechanistically, knockdown of WAVE2 increases G-actin levels, thereby reducing the nuclear translocation of MRTFA in myoblasts, (iv) consequently inhibits the expression and activity of SRF and suppresses myogenic gene expression and cell proliferation. Thus, our findings suggest that WAVE2 is critical for myogenic differentiation by regulating the MRTFA-SRF axis.

Actin dynamics is required to reorganize the cytoskeleton and initiate mechanotransduction that causes transcriptional activation of various myogenic regulatory genes [3,18]. Hence, ABPs involved in actin dynamics play crucial roles in muscle development, differentiation, and regeneration [9,11]. Given the canonical function of WAVE2 in actin dynamics and the significance of the MRTFA-SRF signaling axis in myogenesis, we hypothesize that WAVE2 might be essential for myogenic differentiation and myotube formation. Initially, we found that WAVE2 expression increased during myoblast differentiation. Although the expression regulation of WAVE2 has not been studied, the upregulation of WAVE2 appears to be an integral part of the regulation of myogenic processes because our subsequent investigations demonstrated that knockdown of WAVE2 significantly inhibited differentiation and myotube formation in C2C12 myoblasts.

Then, what is the underlying molecular mechanism involved in the impaired myogenic gene expression and differentiation resulting from WAVE2 depletion in myoblasts? This study provides for the first time a detailed explanation of the role of WAVE2 during myogenic differentiation by revealing its impact on actin dynamics, MRTFA nuclear localization, and SRF activation. SRF and MRTFA are actin-sensitive transcription factors responsible for regulating various biological functions, including fibroblast-to-myofibroblast transition [47–49] and myoblast differentiation and fusion [13,14]. Notably, we found that the knockdown of WAVE2 increased G-actin levels and suppressed the nuclear localization of MRTFA in myoblasts. Modulation of the actin-sensitive nuclear translocation of MRTFA from cytoplasm has been well-established. By interacting with G-actin via the RPEL motif, MRTFA is localized in the cytoplasm [18,19], and this hinders the binding between the nuclear localization sequence (NLS) of MRTFA and importin- α/β heterodimer, thereby preventing its nuclear translocation [18,19,41]. On the other hand, increased actin polymerization reduces cytoplasmic G-actin levels, allowing dissociation of MRTFA from G-actin and import factors to access the NLS of MRTFA, which promotes MRTFA translocation to the nucleus, further facilitating SRF activation [40,41,50,51]. Hence, the accumulation of G-actin observed in WAVE2-depleted cells represents a barrier to the nuclear import of MRTFA, preventing the nuclear translocation of MRTFA and thereby hindering SRF-mediated gene expression. Previously, Cenik et al. demonstrated that skeletal muscle-specific MRTFs knockout mice exhibited impaired myoblast proliferation and increased apoptosis during embryonic development [52]. Moreover, the deletion of SRF in skeletal muscle caused a significant reduction in muscle mass, resulting in perinatal death [53], and conditional deletion of SRF in adult mice caused progressive muscle mass loss and sarcopenia [54]. These findings support the notions that WAVE2 orchestrates actin dynamics and the MRTFA-SRF axis for myogenic differentiation.

Our investigation into SRF activity further substantiates the integral role played by WAVE2 in the regulation of myogenic gene expression via the MRTFA/SRF complex. We showed that knockdown of WAVE2 reduced transcriptional activation of SRF, as evidenced by luciferase activity using the SMYD1 promoter region containing the SRF binding site. As a result, the expressions of

SRF target genes, i.e., SRF itself, vinculin, MyoD, and SMYD1, were markedly decreased by WAVE2 knockdown. MyoD is a target gene of the MRTFA-SRF axis and plays a critical role in the myogenic commitment step of progenitor cells, whereas the well-known myogenic regulatory factor MyoG is involved in the initiation of myoblast differentiation [36,55]. Since the MRTFA-SRF signaling directly regulates MyoD expression [36], which is involved in the initiation of MyoG expression [37], the reduction of MyoG observed in WAVE2-depleted cells ascribed to the decreased MyoD expression resulting from the reduced SRF activity. Notably, we also observed that knockdown of WAVE2 suppressed the expression of SMYD1. Since SMYD1 is recognized as a vital promoter of myotube formation, its expression is upregulated markedly during myoblast differentiation [56], and its knockdown impairs differentiation, reduces muscle fiber growth, and causes myotube dystrophy in myoblasts [56]. In addition, the inactivation of SMYD1 in skeletal muscle results in myopathy characterized by myofiber hypotrophy and myofibrillar disorganization/breakdown [57]. As demonstrated in our present study, the inhibition of SRF activity and expression by WAVE2 knockdown is directly associated with insufficient actin polymerization and impaired nuclear translocation of MRTFA. Therefore, the suppressed expression of myogenic regulatory factors, such as SRF, MyoD, MyoG, and SMYD1, observed in WAVE2 knockdown eventually impaired myoblast differentiation and myotube formation.

The study also demonstrates that WAVE2 depletion impairs cell proliferation of myoblasts. Knockdown of WAVE2 resulted in decreased viable cells, reduced cell populations in the S and G2/M phases, and increased cells in the G0/G1 phase. Also, WAVE2 depletion led to the downregulation of cell cycle-related genes, such as PCNA, cyclin B1, and cyclin D1. These observations suggest that WAVE2 is required for myoblast proliferation and cell cycle progression, which are essential for efficient skeletal muscle development and regeneration [3]. Progenitor cell proliferation is crucial for myogenesis, and the MRTFA/SRF axis has been implicated in the regulation of cell cycle progression [58,59]. Indeed, increasing evidence suggests that MRTFA and SRF promote oncogenesis by inducing cell proliferation, epithelial-to-mesenchymal transition, and metastasis [60–63]. These findings support that WAVE2 is involved in the regulation of cell cycle and proliferation during myoblast differentiation.

5. Conclusions

This study highlights the significance of actin dynamics and the MRTFA-SRF signaling regulated by WAVE2 during skeletal myogenesis. A summary of how WAVE2 participates in myoblast differentiation is illustrated in Figure 7. WAVE2 is essential for the regulation of actin cytoskeletal dynamics, MRTFA nuclear localization, SRF activity, myoblast proliferation, and myoblast differentiation. Hence, the depletion of WAVE2 was found to be causally linked to actin depolymerization, cytoplasmic G-actin accumulation, cytoplasmic retention of MRTFA, and the inhibition of SRF-mediated gene expression, eventually impeding myogenic differentiation. Additionally, WAVE2 depletion also induced cell cycle arrest and suppressed myoblast proliferation. Further investigations are required into the molecular mechanisms that regulate WAVE2 expression and the MRTFA-SRF axis in the healthy and myopathy animal models to enhance understanding of the complex regulatory networks governing skeletal myogenesis. Targeting WAVE2 and actin cytoskeletal dynamics may offer potential therapeutic strategies for muscle-related disorders and conditions characterized by impaired myogenesis.

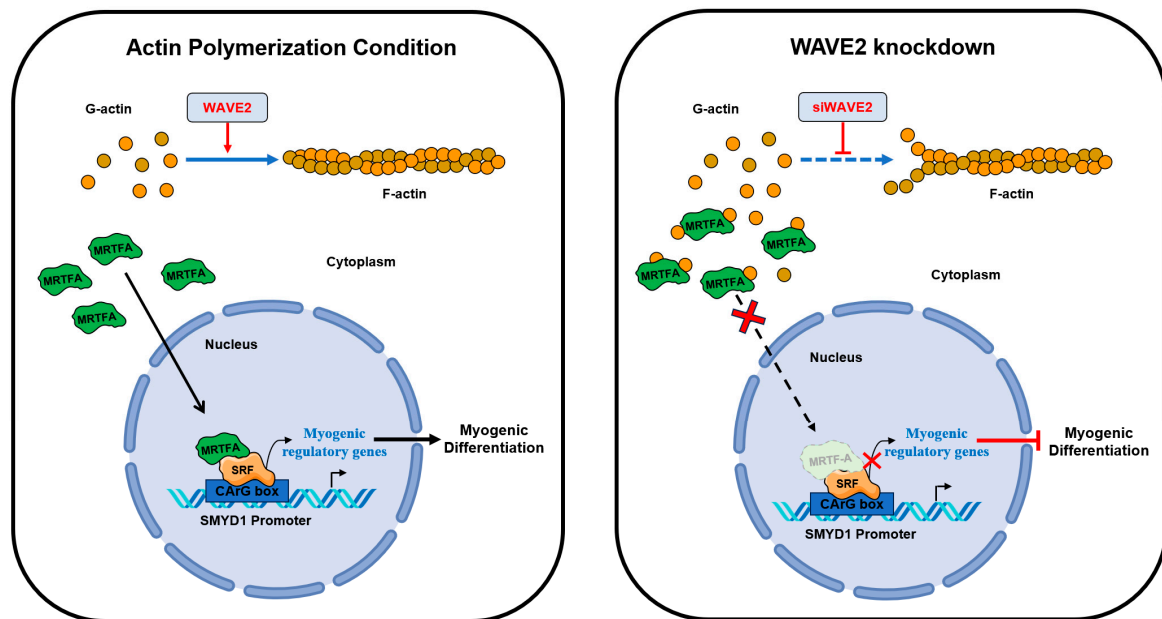


Figure 7. Roles of WAVE2 in myogenic differentiation.

Supplementary Materials: The following supporting information can be downloaded at: www.mdpi.com/xxx/s1, Table S1: Oligonucleotide sequences for transfection, Table S2: Primer lists and conditions for qRT-PCR, Table S3: Primer lists for promotor cloning, Table S4: Antibodies list.

Author Contributions: W.L. and M.T.N. conceived and designed the experiments. M.T.N., H.-J.K. and Q.K.L. performed the experiments and analyzed the data. W.L. and M.T.N. wrote the manuscript. All authors have read and agreed to the published version of the manuscript.

Funding: This study was supported by the National Research Foundation of Korea (NRF) funded by the Korean government (Grant no. NRF-2022R1F1A1072273).

Institutional Review Board Statement: Not applicable.

Informed Consent Statement: Not applicable.

Data Availability Statement: The data presented in this study are available on request from the corresponding author.

Acknowledgments: Not applicable.

Conflicts of Interest: The authors declare no conflict of interest.

References

1. Frontera, W.R.; Ochala, J. Skeletal muscle: a brief review of structure and function. *Calcif Tissue Int* **2015**, *96*, 183–195, doi:10.1007/s00223-014-9915-y.
2. Baskin, K.K.; Winders, B.R.; Olson, E.N. Muscle as a "mediator" of systemic metabolism. *Cell Metab* **2015**, *21*, 237–248, doi:10.1016/j.cmet.2014.12.021.
3. Chal, J.; Pourquie, O. Making muscle: skeletal myogenesis in vivo and in vitro. *Development* **2017**, *144*, 2104–2122, doi:10.1242/dev.151035.
4. Sartori, R.; Romanello, V.; Sandri, M. Mechanisms of muscle atrophy and hypertrophy: implications in health and disease. *Nat Commun* **2021**, *12*, 330, doi:10.1038/s41467-020-20123-1.
5. Benarroch, L.; Bonne, G.; Rivier, F.; Hamroun, D. The 2020 version of the gene table of neuromuscular disorders (nuclear genome). *Neuromuscul Disord* **2019**, *29*, 980–1018, doi:10.1016/j.nmd.2019.10.010.
6. Jaalouk, D.E.; Lammerding, J. Mechanotransduction gone awry. *Nat Rev Mol Cell Biol* **2009**, *10*, 63–73, doi:10.1038/nrm2597.
7. Harris, A.R.; Jreij, P.; Fletcher, D.A. Mechanotransduction by the Actin Cytoskeleton: Converting Mechanical Stimuli into Biochemical Signals. *Annual Review of Biophysics, Vol 47* **2018**, *47*, 617–631, doi:10.1146/annurev-biophys-070816-033547.
8. Martino, F.; Perestrelo, A.R.; Vinarsky, V.; Pagliari, S.; Forte, G. Cellular Mechanotransduction: From Tension to Function. *Front Physiol* **2018**, *9*, 824, doi:10.3389/fphys.2018.00824.

9. Fischer, M.; Rikeit, P.; Knaus, P.; Coirault, C. YAP-Mediated Mechanotransduction in Skeletal Muscle. *Front Physiol* **2016**, *7*, 41, doi:10.3389/fphys.2016.00041.
10. Gao, J.; Nakamura, F. Actin-Associated Proteins and Small Molecules Targeting the Actin Cytoskeleton. *Int J Mol Sci* **2022**, *23*, 2118, doi:10.3390/ijms23042118.
11. Watt, K.I.; Goodman, C.A.; Hornberger, T.A.; Gregorevic, P. The Hippo Signaling Pathway in the Regulation of Skeletal Muscle Mass and Function. *Exerc Sport Sci Rev* **2018**, *46*, 92-96, doi:10.1249/JES.0000000000000142.
12. Medjkane, S.; Perez-Sanchez, C.; Gaggioli, C.; Sahai, E.; Treisman, R. Myocardin-related transcription factors and SRF are required for cytoskeletal dynamics and experimental metastasis. *Nat Cell Biol* **2009**, *11*, 257-268, doi:10.1038/ncb1833.
13. Coletti, D.; Daou, N.; Hassani, M.; Li, Z.; Parlakian, A. Serum Response Factor in Muscle Tissues: From Development to Ageing. *Eur J Transl Myol* **2016**, *26*, 6008, doi:10.4081/ejtm.2016.6008.
14. Montel, L.; Sotiropoulos, A.; Hénon, S. The nature and intensity of mechanical stimulation drive different dynamics of MRTF-A nuclear redistribution after actin remodeling in myoblasts. *PLoS One* **2019**, *14*, e0214385, doi:10.1371/journal.pone.0214385.
15. Gerber, A.; Esnault, C.; Aubert, G.; Treisman, R.; Pralong, F.; Schibler, U. Blood-borne circadian signal stimulates daily oscillations in actin dynamics and SRF activity. *Cell* **2013**, *152*, 492-503, doi:10.1016/j.cell.2012.12.027.
16. Selvaraj, A.; Prywes, R. Megakaryoblastic leukemia-1/2, a transcriptional co-activator of serum response factor, is required for skeletal myogenic differentiation. *J Biol Chem* **2003**, *278*, 41977-41987, doi:10.1074/jbc.M305679200.
17. Randrianarison-Huetz, V.; Papaefthymiou, A.; Herledan, G.; Noviello, C.; Faradova, U.; Collard, L.; Pincini, A.; Schol, E.; Decaux, J.F.; Maire, P.; et al. Srf controls satellite cell fusion through the maintenance of actin architecture. *J Cell Biol* **2018**, *217*, 685-700, doi:10.1083/jcb.201705130.
18. Olson, E.N.; Nordheim, A. Linking actin dynamics and gene transcription to drive cellular motile functions. *Nat Rev Mol Cell Biol* **2010**, *11*, 353-365, doi:10.1038/nrm2890.
19. Kyheroinen, S.; Vartiainen, M.K. Nuclear actin dynamics in gene expression and genome organization. *Semin Cell Dev Biol* **2020**, *102*, 105-112, doi:10.1016/j.semcdb.2019.10.012.
20. Nguyen, M.T.; Min, K.H.; Kim, D.; Park, S.Y.; Lee, W. CFL2 is an essential mediator for myogenic differentiation in C2C12 myoblasts. *Biochem Biophys Res Commun* **2020**, *533*, 710-716, doi:10.1016/j.bbrc.2020.11.016.
21. De Silva, S.; Fan, Z.; Kang, B.; Shanahan, C.M.; Zhang, Q. Nesprin-1: novel regulator of striated muscle nuclear positioning and mechanotransduction. *Biochem Soc Trans* **2023**, *51*, 1331-1345, doi:10.1042/BST20221541.
22. Nguyen, M.T.; Won, Y.H.; Kwon, T.W.; Lee, W. Twinfilin-1 is an essential regulator of myogenic differentiation through the modulation of YAP in C2C12 myoblasts. *Biochem Biophys Res Commun* **2022**, *599*, 17-23, doi:10.1016/j.bbrc.2022.02.021.
23. Nowak, S.J.; Nahirney, P.C.; Hadjantonakis, A.K.; Baylies, M.K. Nap1-mediated actin remodeling is essential for mammalian myoblast fusion. *J Cell Sci* **2009**, *122*, 3282-3293, doi:10.1242/jcs.047597.
24. O'Connor, R.S.; Steeds, C.M.; Wiseman, R.W.; Pavlath, G.K. Phosphocreatine as an energy source for actin cytoskeletal rearrangements during myoblast fusion. *J Physiol* **2008**, *586*, 2841-2853, doi:10.1113/jphysiol.2008.151027.
25. Zhang, T.; Zaal, K.J.; Sheridan, J.; Mehta, A.; Gundersen, G.G.; Ralston, E. Microtubule plus-end binding protein EB1 is necessary for muscle cell differentiation, elongation and fusion. *J Cell Sci* **2009**, *122*, 1401-1409, doi:10.1242/jcs.039255.
26. Rottner, K.; Stradal, T.E.B.; Chen, B. WAVE regulatory complex. *Curr Biol* **2021**, *31*, R512-R517, doi:10.1016/j.cub.2021.01.086.
27. Nakanishi, O.; Suetsugu, S.; Yamazaki, D.; Takenawa, T. Effect of WAVE2 phosphorylation on activation of the Arp2/3 complex. *J Biochem* **2007**, *141*, 319-325, doi:10.1093/jb/mvm034.
28. Campellone, K.G.; Welch, M.D. A nucleator arms race: cellular control of actin assembly. *Nat Rev Mol Cell Biol* **2010**, *11*, 237-251, doi:10.1038/nrm2867.
29. Takenawa, T.; Suetsugu, S. The WASP-WAVE protein network: connecting the membrane to the cytoskeleton. *Nat Rev Mol Cell Biol* **2007**, *8*, 37-48, doi:10.1038/nrm2069.
30. Yamazaki, D.; Oikawa, T.; Takenawa, T. Rac-WAVE-mediated actin reorganization is required for organization and maintenance of cell-cell adhesion. *J Cell Sci* **2007**, *120*, 86-100, doi:10.1242/jcs.03311.
31. Yan, C.; Martinez-Quiles, N.; Eden, S.; Shibata, T.; Takeshima, F.; Shinkura, R.; Fujiwara, Y.; Bronson, R.; Snapper, S.B.; Kirschner, M.W.; et al. WAVE2 deficiency reveals distinct roles in embryogenesis and Rac-mediated actin-based motility. *EMBO J* **2003**, *22*, 3602-3612, doi:10.1093/emboj/cdg350.
32. Danson, C.M.; Pocha, S.M.; Bloomberg, G.B.; Cory, G.O. Phosphorylation of WAVE2 by MAP kinases regulates persistent cell migration and polarity. *J Cell Sci* **2007**, *120*, 4144-4154, doi:10.1242/jcs.013714.

33. Nolz, J.C.; Gomez, T.S.; Zhu, P.; Li, S.; Medeiros, R.B.; Shimizu, Y.; Burkhardt, J.K.; Freedman, B.D.; Billadeau, D.D. The WAVE2 complex regulates actin cytoskeletal reorganization and CRAC-mediated calcium entry during T cell activation. *Curr Biol* **2006**, *16*, 24-34, doi:10.1016/j.cub.2005.11.036.
34. Yamazaki, D.; Suetsugu, S.; Miki, H.; Kataoka, Y.; Nishikawa, S.; Fujiwara, T.; Yoshida, N.; Takenawa, T. WAVE2 is required for directed cell migration and cardiovascular development. *Nature* **2003**, *424*, 452-456, doi:10.1038/nature01770.
35. Song, R.; Zhao, S.; Xu, Y.; Hu, J.; Ke, S.; Li, F.; Tian, G.; Zheng, X.; Li, J.; Gu, L.; et al. MRTF-A regulates myoblast commitment to differentiation by targeting PAX7 during muscle regeneration. *J Cell Mol Med* **2021**, *25*, 8645-8661, doi:10.1111/jcmm.16820.
36. L'Honore, A.; Lamb, N.J.; Vandromme, M.; Turowski, P.; Carnac, G.; Fernandez, A. MyoD distal regulatory region contains an SRF binding CArG element required for MyoD expression in skeletal myoblasts and during muscle regeneration. *Mol Biol Cell* **2003**, *14*, 2151-2162, doi:10.1091/mbc.e02-07-0451.
37. Deato, M.D.; Marr, M.T.; Sottero, T.; Inouye, C.; Hu, P.; Tjian, R. MyoD targets TAF3/TRF3 to activate myogenin transcription. *Mol Cell* **2008**, *32*, 96-105, doi:10.1016/j.molcel.2008.09.009.
38. Kawamura, K.; Takano, K.; Suetsugu, S.; Kurisu, S.; Yamazaki, D.; Miki, H.; Takenawa, T.; Endo, T. N-WASP and WAVE2 acting downstream of phosphatidylinositol 3-kinase are required for myogenic cell migration induced by hepatocyte growth factor. *J Biol Chem* **2004**, *279*, 54862-54871, doi:10.1074/jbc.M408057200.
39. Kurisu, S.; Suetsugu, S.; Yamazaki, D.; Yamaguchi, H.; Takenawa, T. Rac-WAVE2 signaling is involved in the invasive and metastatic phenotypes of murine melanoma cells. *Oncogene* **2005**, *24*, 1309-1319, doi:10.1038/sj.onc.1208177.
40. Vartiainen, M.K.; Guettler, S.; Larijani, B.; Treisman, R. Nuclear actin regulates dynamic subcellular localization and activity of the SRF cofactor MAL. *Science* **2007**, *316*, 1749-1752, doi:10.1126/science.1141084.
41. Pawlowski, R.; Rajakyla, E.K.; Vartiainen, M.K.; Treisman, R. An actin-regulated importin alpha/beta-dependent extended bipartite NLS directs nuclear import of MRTF-A. *EMBO J* **2010**, *29*, 3448-3458, doi:10.1038/emboj.2010.216.
42. Li, D.; Niu, Z.; Yu, W.; Qian, Y.; Wang, Q.; Li, Q.; Yi, Z.; Luo, J.; Wu, X.; Wang, Y.; et al. SMYD1, the myogenic activator, is a direct target of serum response factor and myogenin. *Nucleic Acids Res* **2009**, *37*, 7059-7071, doi:10.1093/nar/gkp773.
43. Onuh, J.O.; Qiu, H. Serum response factor-cofactor interactions and their implications in disease. *FEBS J* **2021**, *288*, 3120-3134, doi:10.1111/febs.15544.
44. Whitfield, M.L.; George, L.K.; Grant, G.D.; Perou, C.M. Common markers of proliferation. *Nat Rev Cancer* **2006**, *6*, 99-106, doi:10.1038/nrc1802.
45. Guerin, C.M.; Kramer, S.G. Cytoskeletal remodeling during myotube assembly and guidance: coordinating the actin and microtubule networks. *Commun Integr Biol* **2009**, *2*, 452-457, doi:10.4161/cib.2.5.9158.
46. Heng, Y.W.; Koh, C.G. Actin cytoskeleton dynamics and the cell division cycle. *Int J Biochem Cell Biol* **2010**, *42*, 1622-1633, doi:10.1016/j.biocel.2010.04.007.
47. Yao, L.; Rathnakar, B.H.; Kwon, H.R.; Sakashita, H.; Kim, J.H.; Rackley, A.; Tomasek, J.J.; Berry, W.L.; Olson, L.E. Temporal control of PDGFRalpha regulates the fibroblast-to-myofibroblast transition in wound healing. *Cell Rep* **2022**, *40*, 111192, doi:10.1016/j.celrep.2022.111192.
48. Velasquez, L.S.; Sutherland, L.B.; Liu, Z.; Grinnell, F.; Kamm, K.E.; Schneider, J.W.; Olson, E.N.; Small, E.M. Activation of MRTF-A-dependent gene expression with a small molecule promotes myofibroblast differentiation and wound healing. *Proc Natl Acad Sci U S A* **2013**, *110*, 16850-16855, doi:10.1073/pnas.1316764110.
49. Gualdrini, F.; Esnault, C.; Horswell, S.; Stewart, A.; Matthews, N.; Treisman, R. SRF Co-factors Control the Balance between Cell Proliferation and Contractility. *Mol Cell* **2016**, *64*, 1048-1061, doi:10.1016/j.molcel.2016.10.016.
50. Sidorenko, E.; Vartiainen, M.K. Nucleoskeletal regulation of transcription: Actin on MRTF. *Exp Biol Med (Maywood)* **2019**, *244*, 1372-1381, doi:10.1177/1535370219854669.
51. Miralles, F.; Posern, G.; Zaromytidou, A.I.; Treisman, R. Actin dynamics control SRF activity by regulation of its coactivator MAL. *Cell* **2003**, *113*, 329-342, doi:10.1016/s0092-8674(03)00278-2.
52. Cenik, B.K.; Liu, N.; Chen, B.; Bezprozvannaya, S.; Olson, E.N.; Bassel-Duby, R. Myocardin-related transcription factors are required for skeletal muscle development. *Development* **2016**, *143*, 2853-2861, doi:10.1242/dev.135855.
53. Li, S.; Czubryt, M.P.; McAnally, J.; Bassel-Duby, R.; Richardson, J.A.; Wiebel, F.F.; Nordheim, A.; Olson, E.N. Requirement for serum response factor for skeletal muscle growth and maturation revealed by tissue-specific gene deletion in mice. *Proc Natl Acad Sci U S A* **2005**, *102*, 1082-1087, doi:10.1073/pnas.0409103102.
54. Lahoute, C.; Sotiropoulos, A.; Favier, M.; Guillet-Deniau, I.; Charvet, C.; Ferry, A.; Butler-Browne, G.; Metzger, D.; Tuil, D.; Daegelen, D. Premature aging in skeletal muscle lacking serum response factor. *PLoS One* **2008**, *3*, e3910, doi:10.1371/journal.pone.0003910.

55. Lu, J.; Webb, R.; Richardson, J.A.; Olson, E.N. MyoR: a muscle-restricted basic helix-loop-helix transcription factor that antagonizes the actions of MyoD. *Proc Natl Acad Sci U S A* **1999**, *96*, 552-557, doi:10.1073/pnas.96.2.552.
56. Nagandla, H.; Lopez, S.; Yu, W.; Rasmussen, T.L.; Tucker, H.O.; Schwartz, R.J.; Stewart, M.D. Defective myogenesis in the absence of the muscle-specific lysine methyltransferase SMYD1. *Dev Biol* **2016**, *410*, 86-97, doi:10.1016/j.ydbio.2015.12.005.
57. Stewart, M.D.; Lopez, S.; Nagandla, H.; Soibam, B.; Benham, A.; Nguyen, J.; Valenzuela, N.; Wu, H.J.; Burns, A.R.; Rasmussen, T.L.; et al. Mouse myofibers lacking the SMYD1 methyltransferase are susceptible to atrophy, internalization of nuclei and myofibrillar disarray. *Dis Model Mech* **2016**, *9*, 347-359, doi:10.1242/dmm.022491.
58. Du, H.; Bartleson, J.M.; Butenko, S.; Alonso, V.; Liu, W.F.; Winer, D.A.; Butte, M.J. Tuning immunity through tissue mechanotransduction. *Nat Rev Immunol* **2023**, *23*, 174-188, doi:10.1038/s41577-022-00761-w.
59. Guenther, C.; Faisal, I.; Uotila, L.M.; Asens, M.L.; Harjunpaa, H.; Savinko, T.; Ohman, T.; Yao, S.; Moser, M.; Morris, S.W.; et al. A beta2-Integrin/MRTF-A/SRF Pathway Regulates Dendritic Cell Gene Expression, Adhesion, and Traction Force Generation. *Front Immunol* **2019**, *10*, 1138, doi:10.3389/fimmu.2019.01138.
60. Seifert, A.; Posern, G. Tightly controlled MRTF-A activity regulates epithelial differentiation during formation of mammary acini. *Breast Cancer Res* **2017**, *19*, 68, doi:10.1186/s13058-017-0860-3.
61. Gasparics, A.; Sebe, A. MRTFs- master regulators of EMT. *Dev Dyn* **2018**, *247*, 396-404, doi:10.1002/dvdy.24544.
62. Gau, D.; Roy, P. SRF'ing and SAP'ing - the role of MRTF proteins in cell migration. *J Cell Sci* **2018**, *131*, doi:10.1242/jcs.218222.
63. Faria, L.; Canato, S.; Jesus, T.T.; Goncalves, M.; Guerreiro, P.S.; Lopes, C.S.; Meireles, I.; Morais-de-Sa, E.; Paredes, J.; Janody, F. Activation of an actin signaling pathway in pre-malignant mammary epithelial cells by P-cadherin is essential for transformation. *Dis Model Mech* **2023**, *16*, doi:10.1242/dmm.049652.

Disclaimer/Publisher's Note: The statements, opinions and data contained in all publications are solely those of the individual author(s) and contributor(s) and not of MDPI and/or the editor(s). MDPI and/or the editor(s) disclaim responsibility for any injury to people or property resulting from any ideas, methods, instructions or products referred to in the content.