

Article

Not peer-reviewed version

---

# Seasonal Bleaching and Partial Mortality of *Pocillopora verrucosa* Corals off the Coast of Central Vietnam

---

[Fedor Lishchenko](#)<sup>\*</sup>, Yulia Burmistrova, Roman Petrochenko, Thanh Nguen, [Temir Britayev](#)

Posted Date: 6 December 2023

doi: 10.20944/preprints202312.0319.v1

Keywords: <span>branching corals; bleaching; mortality; temperature stress; turbidity; density; wave action</span>



Preprints.org is a free multidiscipline platform providing preprint service that is dedicated to making early versions of research outputs permanently available and citable. Preprints posted at Preprints.org appear in Web of Science, Crossref, Google Scholar, Scilit, Europe PMC.

Copyright: This is an open access article distributed under the Creative Commons Attribution License which permits unrestricted use, distribution, and reproduction in any medium, provided the original work is properly cited.

## Article

# Seasonal Bleaching and Partial Mortality of *Pocillopora verrucosa* Corals off the Coast of Central Vietnam

F.V. Lishchenko <sup>1,2,\*</sup>, Yu.A. Burmistrova <sup>1</sup>, R.A. Petrochenko <sup>1</sup>, T.H. Nguen <sup>2</sup> and T.A. Britayev <sup>1</sup>

<sup>1</sup> Laboratory of marine invertebrate morphology and ecology, A.N. Severtsov Institute of Ecology and Evolution RAS, Moscow, Russia

<sup>2</sup> Coastal Branch of the Joint Vietnam-Russia Tropical Science and Technology Research Center

\* Correspondence: Fedor-LN@ya.ru

**Abstract:** Coral reefs are one of the most productive yet vulnerable ecosystems on Earth. An important step in understanding the functioning of coral communities is studying environmental impact on the state of reefs. The present study aimed to assess the impacts of the water temperature, precipitation, wave action and population density on the seasonal bleaching, partial and complete mortality of shallow-water branching corals of *Pocillopora verrucosa* species complex. The present study was conducted at the Dam Bay research station (Nha Trang Bay) from 26 April 2020 to 2 April 2021. Over the course of the study the percentage of bleached coral colonies varied from 1 to 41.5% with two peaks, in autumn (October) and spring (April). Rates of the development of partial mortality varied from 0 to 10%, with a pronounced peak in December. At the end of the experiment the percentage of coral colonies suffering from partial mortality reached 47%. Only 4.5% of experimental colonies died to the end of the study. Analysis revealed that water temperature and partial mortality are the drivers of bleaching, while wave action, temperature and bleaching are the factors with a significant impact on partial mortality. In the present study the main cause of coral death was the development of algal fouling at the sites of colony lesions, which gradually spread over the entire surface of the colony. We showed also that impact of individual stress on mortality prevailed over the impact of seasonal bleaching and partial mortality events.

**Keywords:** branching corals; bleaching; mortality; temperature stress; turbidity; density; wave action

## 1. Introduction

Coral reefs are one of the most productive yet vulnerable ecosystems on the planet (Naumov et al., 1985; Reaka-Kudla et al., 1997). Millions of people in tropical countries depend on them for essential ecological and economic services such as food, tourism income, and coastal protection from wave impact (Wilkinson, 2004; Ferrario, 2014). However, due to various stress factors in the Anthropocene, coral reefs continue to degrade worldwide (Pandolfi et al., 2003; Bellwood et al., 2004; Hoegh-Guldberg, 2011; Hoegh-Guldberg, 2014; Hughes et al., 2017). From 1957 to 2007, there was approximately a 50% reduction in live coral cover worldwide, and reef degradation continues to this day (Eddy et al., 2021; Tkachenko, 2023; Tkachenko et al., 2023; Rivas et al., 2023).

An important step in understanding the functioning of coral communities is studying environmental impact on the state of reefs. It is known that factors such as temperature, sedimentation, UV and solar radiations, salinity, currents, wave impact can cause coral bleaching, which is believed to be one of the main reasons for their mass mortality (Coles, Jokiel, 1978; Jokiel, Brown, 2004; Banaszak and Lesser, 2009). During bleaching events, intracellular symbionts, dinoflagellates of the family Symbiodiniaceae (zooxanthellae), are released from coral tissues into the external environment, reducing the energy supply to coral colonies which, in severe bleaching, can lead to their death (Brown, 1997; Douglas, 2003). Branching Acroporidae and Pocilloporidae corals

are especially susceptible to bleaching, as their zooxanthellae density is lower than in massive coral species (Shu et al., 2008; Shu et al., 2011).

For the most part, the literature on coral bleaching events contains studies of severe bleaching cases leading to coral death. This type of bleaching is caused by global and local stress factors. Among the global factors, ocean acidification and especially rising sea temperatures have a significant impact on reefs (Hoegh-Guldberg, 1999; Fine and Tchernov, 2007; Hoegh-Guldberg et al., 2014; Fabricius, 2017; Weiss and Martindale, 2017; Lough et al., 2018; Cornwall et al., 2021). Local stress factors can be of both natural, such as storms, sediment accumulation, and anthropogenic origin, including eutrophication, pesticide, heavy metals, industrial and pharmaceutical pollution, overfishing, and destructive fishing (Wilkinson, 2004; Wenger et al., 2015). In the past decade, research has focused on the simultaneous effects of multiple factors on coral bleaching, which can amplify each other or act as antagonists (Brown et al., 2013; Fisher et al., 2019).

Much less studied is the seasonal bleaching, which relies on seasonal fluctuations in environmental parameters that underlie the cyclical nature of seasonal bleaching, a normal phenomenon likely to occur across all reefs in the world (Lesser, 2010; Fitt et al., 2001) except mesophotic corals (Nir et al., 2014). This type of bleaching is associated with the response of zooxanthellae to seasonal fluctuations in environmental parameters such as sea surface temperature (SST) or light intensity (Brown et al., 1999; Fitt et al., 2000). For example, long-term monitoring of the density of zooxanthellae in Caribbean coral reefs revealed that the highest density is achieved during the cold months of the year (January-February) with an annual minimum temperature of 20°C and decreases during the summer months at temperatures of 30°C and above (Fitt et al., 2000). A negative correlation between SST and zooxanthellae density has also been described for Indo-Pacific corals (Brown et al., 1999; Montano et al., 2010). It is believed that seasonal bleaching does not lead to coral death, but prolonged exposure to a stress factor, such as sustained high temperatures during a season, can contribute to their mortality (Warner et al., 2002; Nir et al., 2014).

Global climate change can interact with local stress factors determining the overall impact on coral ecosystems based on the type of these interactions (additive, synergistic, or antagonistic) (Crain et al., 2008; Brown et al., 2013; Fisher et al., 2019). The combination of local natural-climatic and anthropogenic factors creates a complex pattern of seasonal bleaching formation, the regularities of which are yet to be determined. Therefore, to understand the general patterns of seasonal bleaching dynamics and its consequences for coral communities as a whole, specific data are needed for different regions of the tropical zone of the World Ocean.

Another significant threat to corals is the formation of dead areas on the coral surface, which can spread to the entire surface of the coral colony and lead to its mortality (Smith et al., 2006; Rodríguez-Villalobos et al., 2015; Muller et al., 2020). Its appearance can be caused by physical impacts (feeding activity of corallivores or destructive wave action), bacterial outbreaks, or hypoxia due to intense sedimentation (Brown, 1997; Anthony and Larcombe, 2000; McCook, 2001; Nugues and Roberts, 2003). Macroalgae quickly colonize the dead surfaces and, by releasing metabolites, can contribute to the expansion of dead areas or even be the cause of their formation (Smith et al. 2006; Wangpraseurt et al., 2012). Therefore, studying the formation of PM of coral tissue under conditions of an ecosystem shift in the relationship between corals and algae towards the dominance of algae is of particular interest. This shift occurs in the context of increasing eutrophication, sedimentation, and overfishing of herbivorous fish (Birrell et al., 2005; Diaz-Pulido et al., 2010; Silbiger et al., 2018; Wenger et al., 2015). This situation is characteristic for coastal areas in Southeast Asia, including the Nha Trang Bay (Tkachenko et al., 2016), where the present research was conducted.

The aim of this study was to describe the seasonal bleaching and PM of the shallow-water branching coral *Pocillopora verrucosa*, and to analyze the influence of temperature, precipitation, wind speed and coral population density on these processes. The study was conducted on transplanted fragments of corals grown in nurseries, which made it possible to reliably assess the influence of these factors on the coral population based on a large sample size of coral heads, as well as to trace their influence on the fate of individual colonies.

## 2. Materials and methods

### 2.1. Studied coral and research location

Branching scleractinian corals of the genus *Pocillopora* are among the most common coral species in the Indo-Pacific (Loya et al., 2001; Qin et al., 2019). They are widely distributed in the region and commonly used in aquaculture (Combillet et al., 2022), including the waters of Central Vietnam (Latypov, 2016) where the present study was carried out. In the area of our research, the most common and morphologically variable species of the genus was previously identified by Dautova et al. (2007) as *P. verrucosa*. However, it has recently become clear that *P. verrucosa* is a group of cryptic species that cannot be identified by morphological characteristics alone (Johnson et al., 2017; Oury et al., 2023). Since molecular studies of the taxonomic affiliation of the species we used were not the scope of our work, in the text we will use the name of the species complex *P. verrucosa*.

The present study was conducted at the Dam Bay research station of the Coastal Branch of the Joint Russian-Vietnamese Tropical Research and Technological Center (Tropical Center), located on Tre Island, Nha Trang Bay from 26 April 2020 to 2 April 2021 (Figure 1 in Britayev et al. 2023).

### 2.2. Environmental parameters

The environmental factors studied can be divided into two groups: those influencing the fitness and mortality of corals directly (1) and indirectly (2). The first group includes only one factor, the water temperature in the study area. The ambient temperature was measured to the nearest 0.01°C twice a day (at 11:00 AM and 11:00 PM) during the whole period of the study via HOBO U22-001 temperature logger which was deployed at a depth of 3 m on the coral nursery. For the further analysis the obtained data was averaged on a daily basis.

Studied environmental factors with indirect impact on corals include the precipitation, the wind speed and the density of coral populations. None of these represent factors affecting coral condition on their own, but all appear to be the proxy of other environmental parameters which may affect physiological condition and mortality of corals. Specifically, seasonal increase of precipitation is the main cause of increase of sedimentation, and among the key factors determining the water transparency and salinity in the area. Thereby, in the framework of this study, precipitation applied as a proxy of all these environmental factors. Similarly, the wind is the main factor which determines the wave surge power and wave action in general. Consequently, even though variation of the wind speed does not affect corals directly, it affects them via modification of the wave impact. It should be noted that, since the location of Dam Bay research station is protected from the winds blowing from the directions other than the east and south-east (80-190°, "eastern wind" below) by the Hon Tre and Hon Mun islands, speed of the winds blowing only from these directions was considered. Finally, the density of coral population determines water dynamics at the nursery, which in turn may amplify or mitigate the impact of other environmental factors.

Both environmental parameters, precipitation in mm and the eastern wind speed in m/s were collected once a day, using Campbell CR3000 datalogger mounted at Dam Bay research station. It should be noted that since only the daily average wind speed was registered, we are unable to indicate the peak wind speed, or the speed of gusts.

To estimate the influence of density, coral fragments were transplanted to five rectangular iron frames forming the settlements with different densities, namely, the number of colonies on each frame varied from 20 to 60 with a step of 10 colonies (Figure 1).



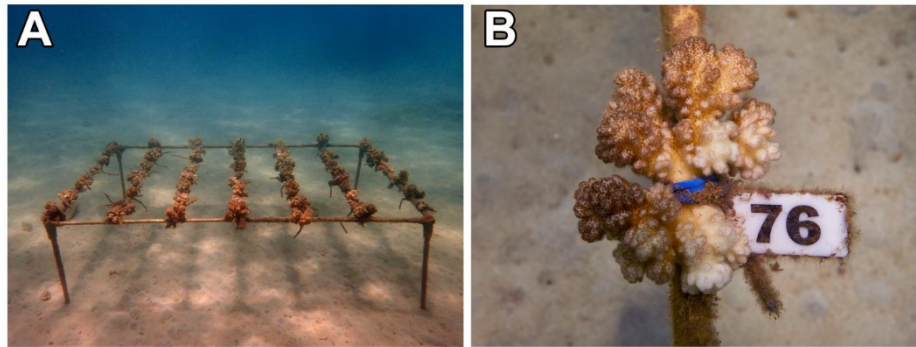


Figure 1. Rectangular iron nursery used in the present experiment (A) and individual coral head planted on the nursery (B).

### 2.3. Assessment of bleaching and mortality

The first two months after the planting of fragments (May - June) colonies were adapting to the new location and during this period the bleaching was not assessed. Thus, even though some of colonies were bleached during this period, we treated it as consequence of adaptation to nurseries.

Exercise on bleaching and mortality assessment had begun on 03.07.2020 and lasted up to 02.04.2021. Colonies were photographed using Panasonic Lumix G80 digital camera in underwater housing twice a month since June to October, in November corals' condition was recorded only once (on 21.11.2020) due to poor weather conditions. Additionally, since January to April 2021 condition of corals also was recorded monthly due to technical limitations.

Acquired photos were used for assessment of coral health using Coral Health Monitoring Chart (Siebeck et al., 2006). Often corals experienced uneven bleaching, in this case the central parts of the colonies were more pigmented than the branches, or individual branches were more bleached than others. Therefore, to avoid assessment bias, the bleaching score was assessed as a mean between the most and the least bleached parts of the colony (Siebeck et al., 2006). The coloration of the tips of the branches was not taken into account, because newly developed tips normally have paler coloration than the internal zone. Colonies with a score of less than 3 were considered bleached, following the CoralWatch monitoring program instructions (2021\_CW-DIY-instructions-4-pages-www.pdf (coralwatch.org)). Assessment of colony bleaching was performed by a single beholder twice to avoid bias caused by differences in color perception between different individuals or different screens.

Partial mortality (PM) was assessed visually as well. In all but one (the survey on 21 November 2020) cases it wasn't possible to find the exact moment of establishment the PM, so the algal fouling was used as a proxy of PM. We recorded only the presence of PM. Since assessment of coral condition was performed using non-life image but photos, it was not possible to accurately estimate the affected area of the colony. The colony was considered dead when its surface was completely covered by lesions or algal fouling.

In order to find out the causes of mortality the backtracking was performed. Individual histories of 9 colonies which died to the end of the study were studied, the time and the duration of suffering from PM and bleaching were considered.

### 2.4. Statistical treatment

To improve the readability of the graphs illustrating a variation of the environmental factors, a moving average with a smoothing interval of 15 days was applied. Such an interval was selected to avoid mixing survey periods since the average time between the surveys was two weeks. Except for this case, the analysis of the impacts of environmental factors on corals was performed using raw data.

The Kolmogorov–Smirnov test was used to test the distributions of dependent variables' values (the percentage of bleached colonies and the percentage of colonies with PM). The test showed that both variables are distributed normally, so general linear models were applied to assess the impacts

of the environmental factors, including water temperature, precipitation, eastern wind speed, coral population density on the percentage of bleached colonies and colonies with developed PM. Additionally, the model developed to estimate impact of environmental factors on bleaching included accumulated share of colonies with PM recorded in each previous survey. Similarly, the model for assessment of environmental impact on PM included the percentage of bleached colonies recorded in a previous survey. Since no statistically significant effect of coral population density was confirmed by the models, additional tests for the same predictors, but only in the months with the greatest levels of bleaching and PM was performed. The impact of each factor was considered significant if  $p$  was below 0.05 ( $p < 0.05$ ), the power of effect was measured following partial eta squared ( $\eta_p^2$ ) value: if  $\eta_p^2$  was less than 0.06, the effect size was considered small, if it was from 0.06 to 0.14, the effect size was considered moderate and if  $\eta_p^2$  was more than 0.12, the effect size was considered large.

To describe the effect of each individual environmental factor on bleaching and development of PM, linear trends were plotted based on the mean values for each survey and planting density.

All tests were performed in Statistica v. 12.0.

### 3. Results

#### 3.1. Variation of the environmental factors

Most of the studied environmental factors experienced significant seasonal variation. In particular, the water temperature in the area of research varied from 22.9 to 31.3°C during the studied period, precipitation level varied from 0 to 165 mm/day. Daily average speed of the eastern wind was the least variable environmental parameter; it ranged from 0 to 3.27 m/s. The detailed overview of monthly variation of these parameters is presented in the Table S1. The trends of water temperature, precipitation and eastern wind speed variation are presented in the Figure 2 (Figure 2A-C, E-G) respectively.

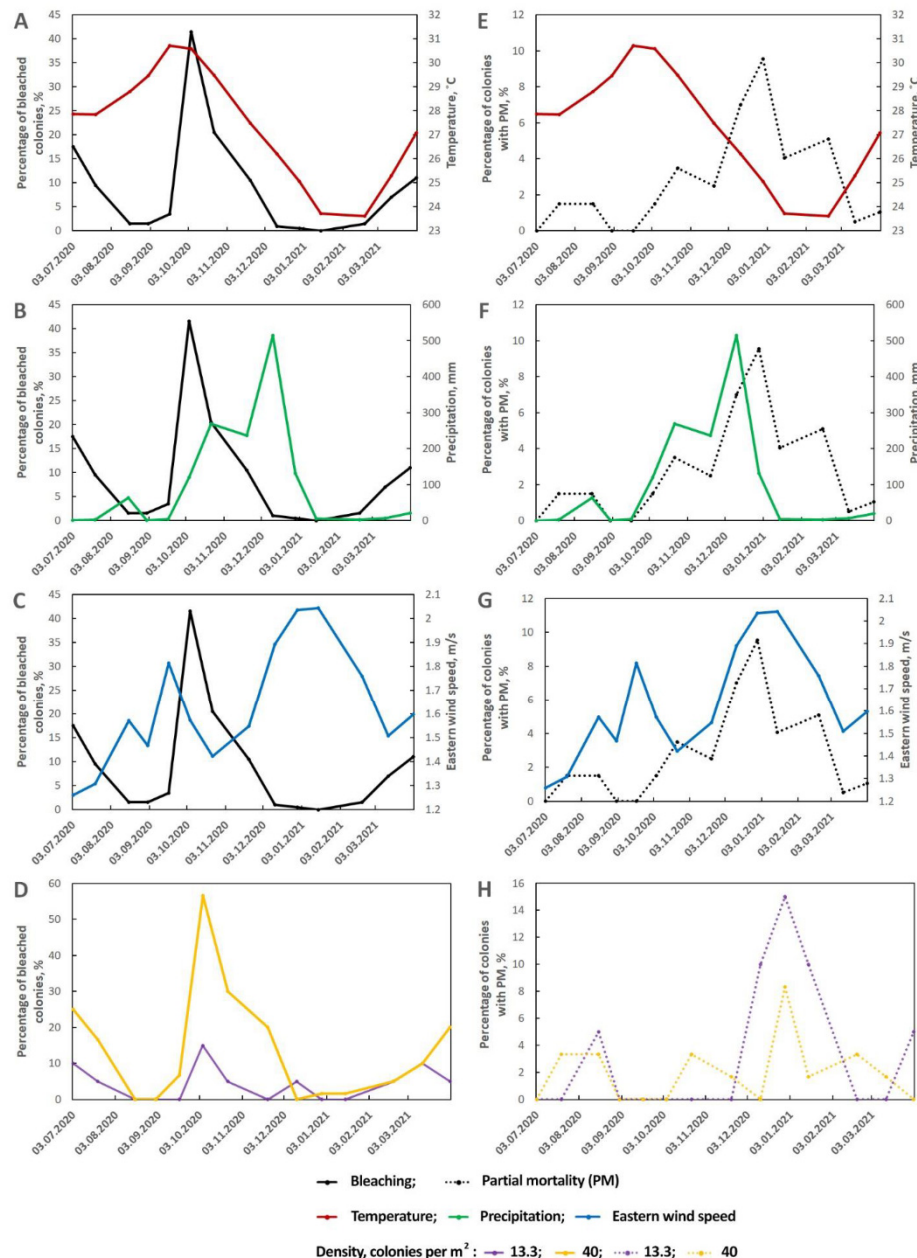


Figure 2. Variation of the water temperature (A, E), precipitation (B, F), eastern wind speed (C, G) coupled with variation of bleaching (A-D) and partial mortality (E-H). Graphs D and H illustrate the differences in variation of bleaching and PM on the nurseries with different coral population density (13.3 and 40 coral heads per m<sup>2</sup>).

### 3.2. Bleaching variability

During the observation period the intensity of colonies coloration varied from pale to dark (Figure 3). When the observation part of the experiment has begun after two months of colony restoration after transplantation, 17.5% of the colonies were bleached. It's not clear if these colonies were still not recovered after transplantation or if they were affected by environmental factors. Either way, summer surveys were characterized by the steady trend on improving of corals condition: in the end of July the percentage of bleached colonies reduced to 9.5%, then, in August to 1.5% (Figure 4). Short after the temperature rise in the middle of September, the percentage of bleached colonies began increasing again, reaching 41.5% in the beginning of October, which was the greatest share of bleaching colonies over the whole study period. Since the second half of October corals began recovering, reducing the percentage of bleached colonies to 20.5% to the end of the month, to 10.5%

in the end of November, and to lowest observed values (1%) in December. January and February were characterized by a rather stable condition of corals with a very weak trend in increasing of the bleached colonies share. From March bleaching intensified, in the beginning of the month the percentage of bleached colonies increased to 9%. Finally, in the end of the experiment this trend continued, leading to increase of the share of bleached colonies to 15.5%.

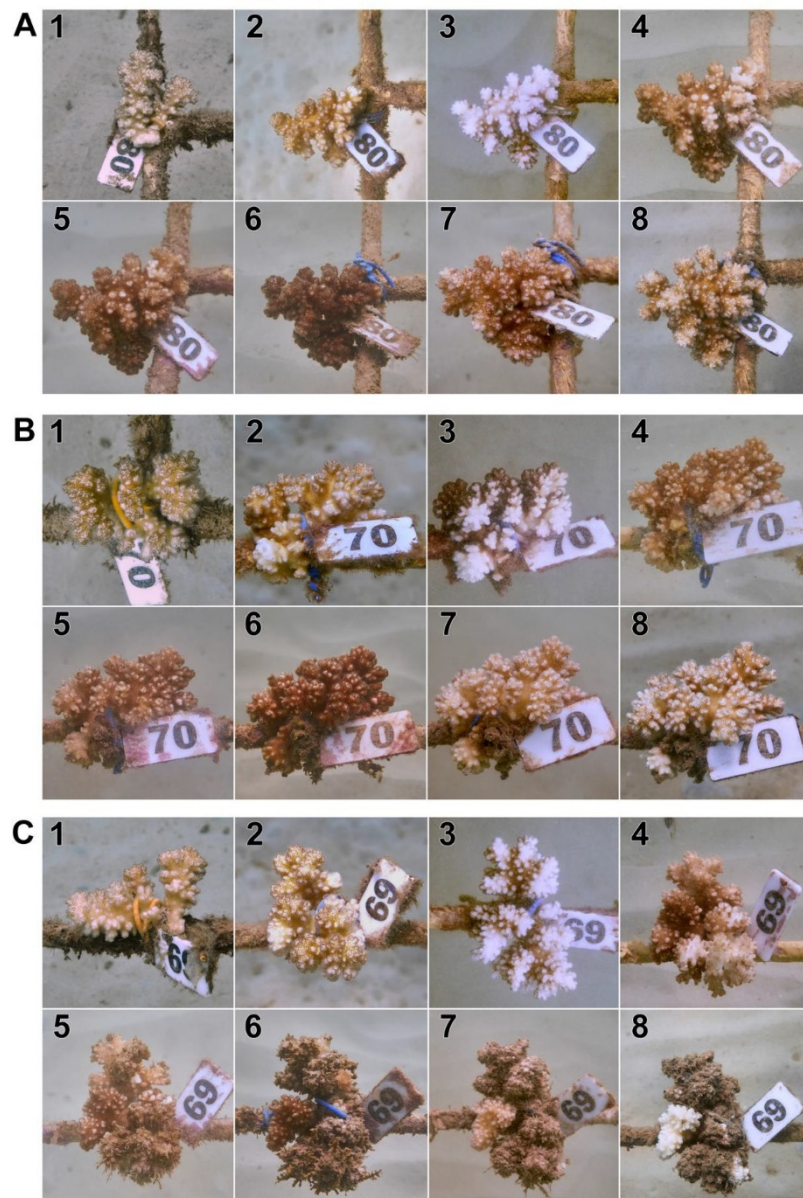


Figure 3. Visual representation of recovery (A), partial mortality (B) and mortality (C) processes in *Pocillopora verrucosa* species complex corals in the framework of the present research.

Thus, during the period of the study, two periods of the seasonal bleaching were observed, namely, the autumn bleaching event with the peak in the beginning of October, and the spring bleaching event characterized by the peak in the end of March - beginning of April (Figure 5A). Potentially, the third peak was observed in the very beginning of the experiment (May-June), but, since it's not possible to clearly distinguish its causes, it won't be considered in the further analysis.



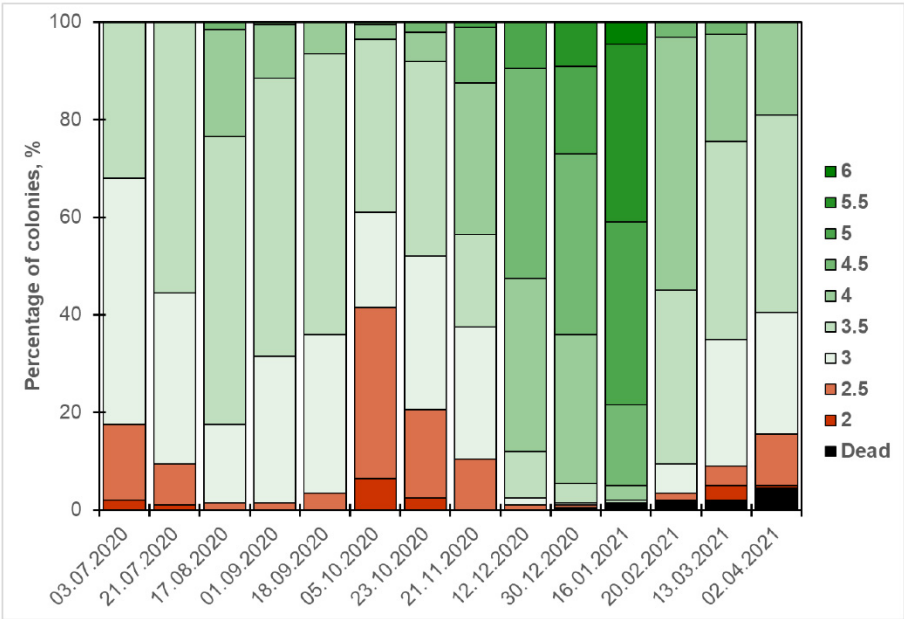


Figure. 4. Variation of the proportion of coral colonies in the specific health condition over the course of the present study.

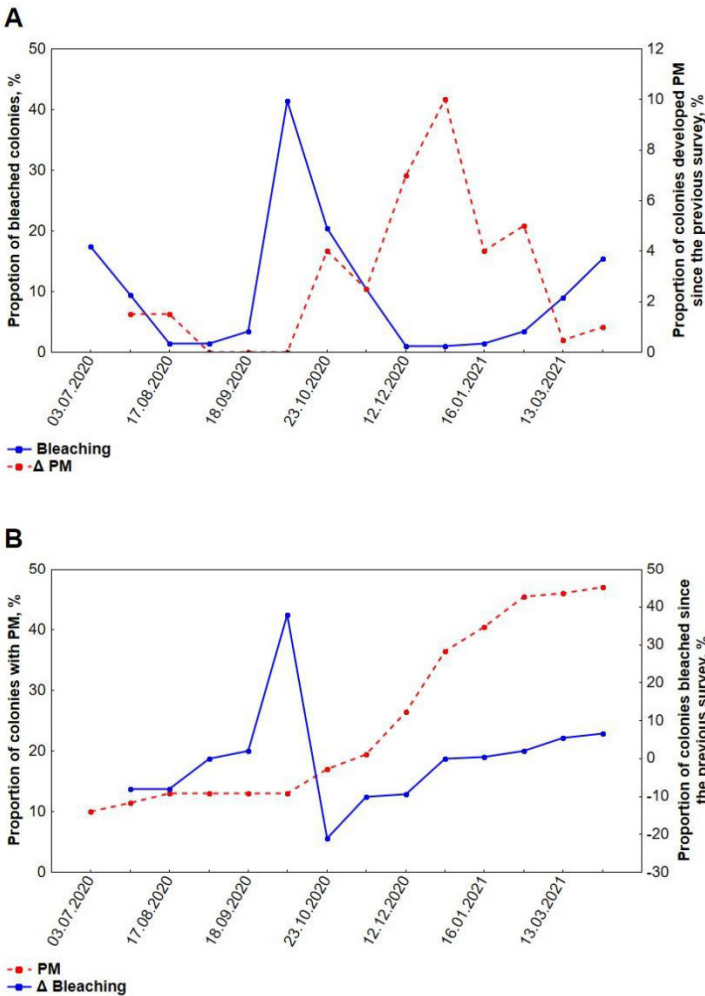


Figure 5. Variation of the proportion of bleached coral colonies and colonies with PM over the course of the present study. Proportion of bleached colonies vs the proportion of colonies that suffered from PM since the previous survey (A), proportion of colonies with PM vs the proportion of colonies bleached since the previous survey (B).

### 3.3. Partial mortality

Since the very beginning of the study algal fouling was observed on the experimental platforms. First, it appeared on the metal bars on which coral fragments were mounted, in the areas not contacting with live coral branches. After that, fouling spread to wires used for mounting coral fragments. Finally, as a part of partial mortality process it appeared on the fragments themselves. In a single case (on November 21) the colonies with newly died surfaces were observed, which allowed direct identification of colonies suffering from PM.

In July only a little portion of coral colonies suffered from PM, 10% of them (Figure 2E-H) were fouled by algae to some extent. During the following months the number of fouled colonies gradually increased, but even to the end of September it did not exceed 13% of the sample. From the middle of October PM began spreading again, at the end of the month the percentage of colonies with PM reached 18%. In November, the spread of colonies with PM continued at a slightly reduced rate (reaching 20% at the end of the month). December was characterized with the greatest recorded PM rates. Just 20 days after the survey in November the percentage of colonies suffering from it increased to 26.5%, and 18 days later their number increased to 36.5%. After such a pronounced mortality event, In January, the percentage of colonies with PM increased only to 40.5%, and in February this value increased by another 5%. In spring mortality rates kept decreasing, reaching just 0.5% in March and 1% in April.

To the end of the period of research more than 47% of living coral colonies suffered PM (Figure 5B). In all the cases, the dead surface was at least partially fouled by algae.

### 3.4. Mortality

In total, during the whole experiment only 9 coral colonies (4.5%) have died, which is the extremely low number in comparison with natural mortality in the area (Figure 4).

The first dead colony was observed in December, right at the moment, when the vast majority of colonies were recovering after autumn bleaching and suffering of PM. In January two more colonies have died, increasing the total percentage of dead colonies to 1.5%. One more colony has died in February. The number of dead colonies haven't change up to the middle of March, but in the end of the month the peak level of mortality was recorded, 5 colonies have died in less than 20 days (Figure 3C; Figure 4).

### 3.5. Impact of environmental factors on bleaching and partial mortality

A general linear model was performed on the percentage of bleached colonies. A significant effect of the temperature (Figure 2A, E; Figure 6A, E), the accumulated PM and intercept was observed (Table S2). Power of the specific effect (effect size) ranged from moderate (intercept and the accumulated PM) to large (temperature). The most pronounced effect of the temperature was observed with a two-week delay. Modelling also revealed moderate effects of precipitation, eastern wind speed and colonies density, but none of them was statistically significant (Figure 2B-D, F-H; Figure 6B-D, F-H). Worth mentioning that impact of colonies density appeared significant ( $F(1) = 7.35$ ;  $p = 0.02$ ;  $\eta_p^2 = 0.42$ ), but only during the periods of mass bleaching and only between nurseries with the lowest and greatest density of coral colonies (Figure 2D, H; Figure 6D, H). It should be noted that overall fit of the model was relatively low yet significant ( $R^2 = 0.36$ ,  $p = 0.001$ ).

The general linear model performed on the percentage of the colonies with PM fit the data better, even though the percentage of variance explained was still less than 50% (adjusted  $R^2 = 0.47$ ,  $p < 0.001$ ). According to the model, several environmental variables significantly affected PM, including eastern wind speed, bleaching, experienced in the previous survey and water temperature (Figure 6E-H; Figure 5B; Table S3). The most powerful was the effect of the wind speed (large effect size), followed by the bleaching and ambient temperature, both having moderate effect size. Unlike the case of bleaching, the temperature was negatively correlated with the percentage of colonies with PM, while the eastern wind speed was correlated positively. Precipitation and colony density had weak and insignificant effect in the model (Figure 2E-H). A separate test revealed that colonies

density may have impact ( $F(1) = 4.70$ ;  $p = 0.02$ ;  $\eta_p^2 = 0.63$ ) on PM during the periods of its mass development (typhoon and post typhoon surveys), but this impact is opposite to the impact of colonies density on bleaching, i.e. nurseries with higher colonies density were less subjected to development of PM than ones with lower colonies density (Figure 2H).

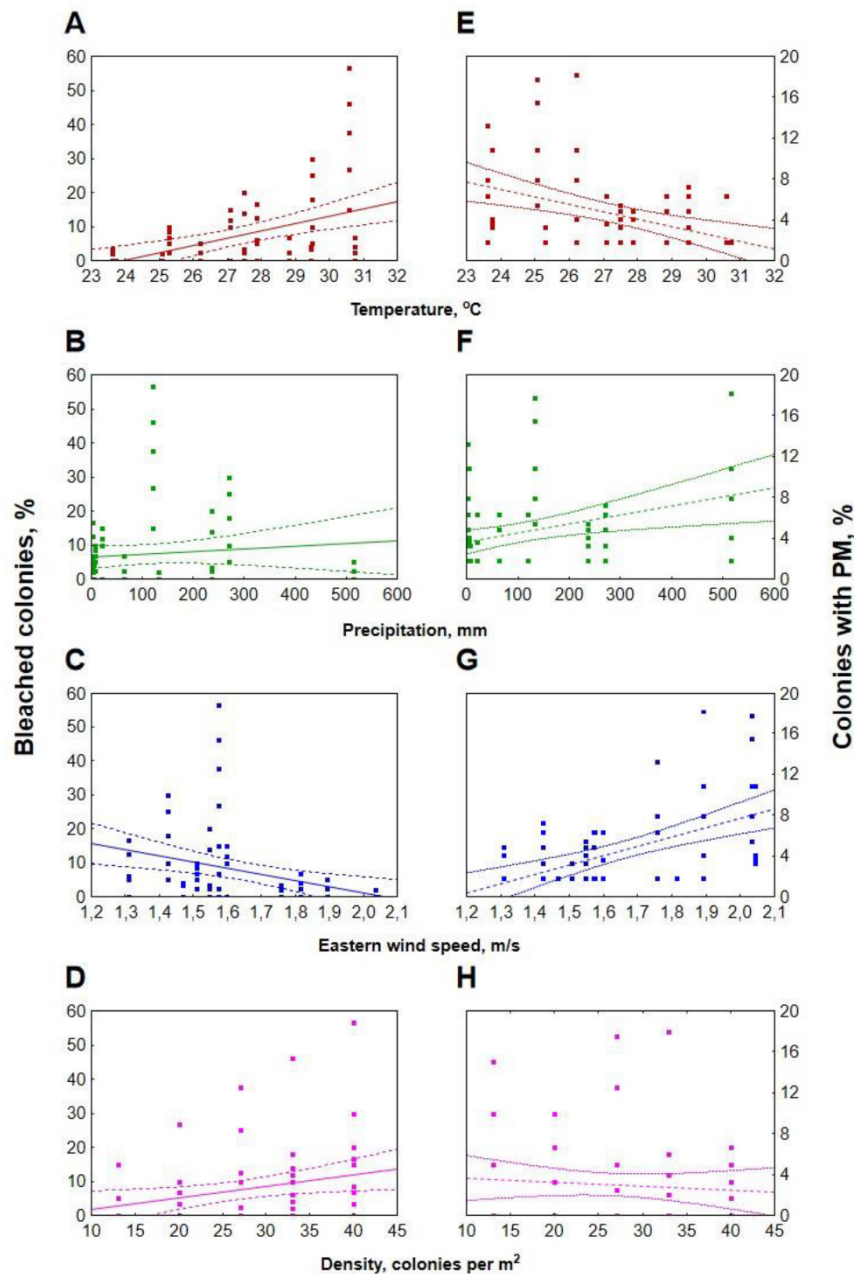


Figure 6. Trends in environmental factors' impacts on coral bleaching and partial mortality. Impact of the temperature on bleaching (A) and on PM (E), impact of precipitation on bleaching (B) and on PM (F), impact of the eastern wind speed on bleaching (C) and on PM (G), impact of the coral population density on bleaching (D) and on PM (H).

### 3.6. Impact of bleaching and partial mortality on mortality

Backtracking exercise revealed that bleaching or even PM alone couldn't lead the whole colony to death. One third of colonies were not bleached prior to death, 44% of dead colonies were bleached for about two to four weeks, while the remaining two were bleached for about two months before dying. Among the colonies suffered from bleaching before dying, condition of three colonies began getting worse at the second seasonal peak of bleaching (in March), two more were suffering from

bleaching from the end of February and one got bleached in the end of December, when the most of colonies were recovering.

As for the lesions or PM, all the dead colonies suffered from these conditions before dying, but the duration of these conditions varied greatly. The shortest case recorded was less than two months, the first lesions were recorded in the beginning of December and in the middle of January the colony already was dead. In other, less radical cases, colonies suffered from PM from 2.5 to more than 9 months. It should be noted that only 33% of colonies got PM at the main PM event in the end of November, while the majority was suffering from PM even before that.

Summing up, we may clearly indicate that in the framework of this study PM spreading over the whole colony surface was the main cause of mortality. Bleaching could affect survival of colonies, however, it is impossible to find out if it was the factor influencing coral mortality or the side effect of PM development.

## 4. Discussion

### 4.1. Impact of environmental factors on bleaching

It is known that the dynamics of bleaching usually corresponds to the dynamics of SST (sea surface temperature) (Glynn, 2000; Eakin et al., 2009). However, in the study area, the high DHW index (reaching 10°C per week, indicating a Level 2 bleaching risk) calculated based on sea surface temperature during the July-August of 2020 (Figure S1) did not affect the condition of the experimental colonies. This situation is related to the development of coastal upwelling (Tkachenko et al., 2023), which mitigated the impact of anomalously high temperature in the subsurface layer where the experimental colonies were located. High and prolonged water heating (30-31.7°C) at the experimental site was observed only in September, which corresponds to the decline of upwelling by the beginning of that month (Figure 2A). The observed dynamics of bleaching overall corresponded to the temperature dynamics directly around the experimental colonies (Figure 6A).

It should be noted that the peak of temperature occurred mid-September, while the peak of bleaching was registered in early October, about two weeks later (Figure 2A). Similar lag between heating and bleaching has been observed by other authors. For example, Berkelmans and Willis (1999) found a one-month delay in bleaching for thermally sensitive corals *Acropora formosa* and *Pocillopora damicornis* on the Great Barrier Reef, Australia. A comparable situation was observed on the reefs of the Bahamas, where the decline in zooxanthellae density (start of bleaching) occurred after the period of maximum temperatures (Fitt et al., 2000). The lag in bleaching could be attributed to cumulative stress persists on the reef after the period of water heating (Afrin, 2021).

It is known that typhoons have a destructive impact on coral communities, causing mechanical damage to colonies (Harmelin-Vivien, 1994; Jokiel, 2006; Guillemot et al., 2010). Typhoons bring abundant rainfall and, as a result of increased river runoff, increase turbidity and decrease salinity of coastal waters. In turn, decreased water transparency leads to a reduction in the photosynthetic activity of zooxanthellae, and a decrease in salinity to 15-20‰ leads to coral bleaching and mortality (Banner, 1968; Jokiel et al., 1993). Therefore, during typhoons, deterioration of the overall health of the colonies and bleaching can be expected (Banner, 1968; Jokiel et al., 1993; Philipp and Fabricius 2003; Piniak and Storlazzi, 2008).

In the area of our study, typhoons occur in the autumn months, from late October to December. In 2020, rainy season began in the late September and continued until December, with the highest amount of precipitation in the late November, which corresponds to long-term observations of precipitation in Nha Trang (Le et al., 2022). However, contrary to expectations, we did not observe an increase in bleaching during this period. Moreover, a positive correlation between wind speed (a proxy for wave impact) and the percentage of bleached colonies (Figure 6C), many of which recovered during this period was registered. So, what explains this contradiction?

We believe that the negative wave impact on the condition of corals does exist, but it is not prominent since it is largely compensated by the positive effect of decreased water temperature during typhoons. This assumption is supported by data from other studies on the mitigating effect



of hurricanes on accumulated thermal stress due to temperature decrease (Heron et al., 2008; Manzello et al., 2007). In addition, colonies in the present experiment likely managed to avoid the negative impact of increased water turbidity due to rapid rates of photo-acclimation, as a likely mechanism by which corals maintain a positive energy balance on coral reefs in turbid season (Anthony and Larcombe, 2000; Zweifler et al., 2021). Finally, it is known that critical salinity decrease for corals is usually registered in the surface layer at a depth of 1-2 m (Jokiel et al., 1993), whereas our colonies were located below this freshened layer of water (3 m) and thus avoid exposure to low salinity.

Colony density is another factor which positively, yet statistically insignificant influences bleaching. We found that the percentage of bleached colonies was higher on frames with higher colony density. The maximum differences in shares of bleached colonies were observed between frames with the minimum and maximum densities (13 and 40 colonies per m<sup>2</sup>, respectively), but even in this case they were statistically significant only during periods of maximum bleaching development (from October to December, Figure 2D). Possible reasons for increased bleaching in higher density coral settlements could be the deterioration of water circulation around the colonies. This assumption is supported by data of Nakamura et al. (2003) and Nakamura and Van Woessik (2001) showed that moderate to high water flow prevents colonies from bleaching under high temperature and light conditions and promotes their rapid recovery after bleaching.

Partial mortality is a factor of bleaching, that differs in nature from others reviewed here. First of all, it is clearly a factor that influences coral fitness directly. At the same time, this is a factor, which development is significantly determined by the impact of other environmental factors (Figure 6E, G). Summing up, we treat PM as a secondary factor that directly affects bleaching. According to the analysis, PM has moderate and significant negative impact on the condition of the whole coral colony. We tend to believe that the initial lesions (mechanical damage) unlikely could affect the condition of the whole colony, but algal fouling which always follows the lesions, may significantly aggravate colony health. Metabolites of algae, which cause hypoxia in coral tissues, can be the inductor of weakening of the whole colony (Smith et al., 2006). Moreover, crude extracts of macroalgae affect coral microbiom and caused significant bleaching and reduction in coral photosynthetic efficiency (Rasher et al. 2011; Fong et al. 2023). The reality of this scenario is confirmed by other authors as well. For example, Wangpraseurt et al. (2012) demonstrated that the fouling of *Porites* spp. by turf- and coralline algae, was toxic to corals. Thus, metabolites of fouling algae are poisoning the colony, which leads to bleaching, and the more severe is fouling, the more severe is its impact on bleaching.

#### 4.2. Impact of environmental factors on partial mortality

By the end of the observation period (11 months of exposure), the percentage of colonies with PM reached 47%. Since we recorded PM only after the development of algal overgrowth, this value should actually be slightly higher. PM varies depending on the local characteristics of habitats and coral species. Specifically, it was higher for *Pocillopora eydouxi* and *P. verrucosa* on the coast of Kenya (10% and 20.7% respectively, Montano et al., 2010), but lower for *P. damicornis* on the coast of Australia - 59% (Pisapia and Pratchett, 2014). With age and, consequently, the size of colonies, the prevalence of PM increases (Figure 5B), indicating a predominance of damage formation over regeneration and/or irreversible transformation of lesions into PM as it has been recorded by Meesters et al. (1996) on two species of Atlantic corals *Diploria strigosa* and *Porites astreoides*.

Among the factors we analyzed (temperature, wind speed, precipitation, colony density), only the first and the third were found to affect significantly the development of PM (Figure 6E, G). It is known that temperature stress indirectly impacts the occurrence of PM by causing severe bleaching, which leads to the emergence of areas with PM (Carilli et al., 2012). However, Montano et al. (Montano et al., 2010), who studied the influence of temperature stress on *Pocillopora eydouxi* and *P. verrucosa* corals (MNP's Watamu, Kenya), observed total and partial mortality after bleaching, but did not associate PM with bleaching. In our case, temperature also has a significant effect on the occurrence of PM, but this effect is negative. At high temperatures (September - early October), increase of the percentage of colonies with PM was close to zero, but decrease of the temperature in

November - January, lead to rapid increase of the share of colonies with PM (Figure 5A). However, in this case, we observe the influence not of temperature, but of the impact of storms, coinciding in time with a decrease in temperature.

Eastern wind speed was found to have strong positive impact on the development of PM (Figure 6G). The highest values of this measure correspond to the period of typhoons in Nha Trang (Le et al., 2022). The appearance of PM is largely related to mechanical damage to coral tissues by suspended particles of sand and debris, which we observed directly during colony surveys in November (Britayev, personal observation). Intense sedimentation (the consequence of increased precipitation) can lead to local hypoxia on the colony surface and contribute to the formation of PM (Nugues and Roberts, 2003), however in the present case impact of precipitation was not statistically significant.

Although high colony density can disrupt local hydrodynamics and cause partial or complete colony mortality (Hennige et al., 2021). However, in our study, the impact of this factor was only at the peak of the PM development. Moreover, higher-density nurseries tended to be less susceptible to PM development than low-density nurseries, likely because in dense populations, colonies protect each other from exposure to mechanical impact of solid particles carried by wave currents.

We also believe that even seasonal bleaching can impact the development of PM (Figure 5A). This was proven by the analysis of impacts on experimental colonies, which revealed that prior to the development of PM affected colonies experienced more severe bleaching than those that did not suffer from PM.

Another direct cause of the appearance of PM on colonies could be the spread of algal fouling from the inorganic substrate (metallic frames or fastening wire) onto the coral tissue. According to our observations, this can occur when colonies are weakened by bleaching or mechanical damage (Figure 3C). As it was mentioned before, metabolites of fouling algae are toxic to corals and may induce weakening of the whole coral colony (Smith et al., 2006; Wangpraseurt et al. 2012). Moreover, there are algae capable to colonize directly live corals, causing the death of their tissues (Jompa and McCook, 2003), and subsequently, the dead surface areas are colonized by various species of filamentous algae (mixed-species turfs). The active development of macroalgae on the surface of corals in our experiment is expected in conditions of chronic eutrophication and long-term total overfishing, which are characteristic of the Nha Trang Bay and lead to a shift in coral-algae interactions towards algae (Tkachenko et al., 2016). However, further experimental studies are needed to understand whether fouling development causes mortality of adjacent coral tissues.

#### 4.3. Colony mortality and its causes

By the end of the 11-month experiment, the number of dead fragments accounted for 4.5%, which is a low figure compared to data from other authors. For example, off the coast of Sumatra (Indonesia), the mortality rate of *P. verrucosa* fragments after 11 months of transplantation was approximately 35-40% (Ferse, 2010). In nurseries off the coast of Tanzania (Zanzibar and Mafia islands), the mortality of *P. verrucosa* over 9 months of exposure was slightly lower and ranged from 10 to 40% depending on the specific nursery and its location (Mbije et al., 2010).

Interestingly, the dynamics of mortality in this case are fundamentally different from what was observed in our experiment. Within our framework, all *P. verrucosa* colonies were alive during the first eight months, and the first dead colonies appeared in the ninth month of the experiment, while the mortality off the coast of Tanzania occurred mainly in the early stages of colony formation - during the first 2-4 months, and then ceased (Mbije et al., 2010). Such a difference in the dynamics of mortality clearly indicates differences in its causes. The mortality of colonies off the coast of Tanzania was caused by fish bites, predation by coralivorous animals, and competition with fouling organisms (Mbije et al., 2010) whereas in Nha Trang Bay, the main cause for the death of colonies is the development of PM. Really, in Nha Trang Bay, the impact of coral-eating fish is minimal due to a drastic decrease in fish diversity and abundance, regardless of their trophic affiliation and commercial value that has occurred over the past 10-15 years (Tkachenko et al., 2016; Tkachenko, 2023). Additionally, the design of the nurseries we used (frames raised above the bottom) prevents attacks on coral colonies by the main predators, coral-eating starfish *Acanthaster planci* and limits the

attacks by the mollusk *Drupella cornus*. Thus, coralivorous animals were nearly excluded in our experiment. Seasonal bleaching itself also does not lead to the death of colonies: there was not a single colony whose death was preceded only by bleaching without PM. At the same time, the death of all colonies was preceded by the development of PM. We did not register the area of the PM, but the photos show that all the dead colonies were covered by fouling (Figure 3C). Moreover, backtracking of dead colonies demonstrated that a third of lost colonies suffered from PM without bleaching before death. Based on these arguments we tend to consider PM as the main cause of mortality in experimental colonies.

It is interesting that two thirds of the dead colonies suffered from bleaching before death, and their bleaching did not coincide with the peak of bleaching (October), but occurred after the defeat of colonies by PM. Considering that these colonies either were bleached before the mass bleaching event in spring, or were not suffering from bleaching prior to death at all, and data on impact of extract of macroalgae on coral microbiome (Fong et al. 2023) we believe that pre-mortality bleaching was induced of severely developed PM. This conclusion corresponds well to our data on the impact of PM on bleaching. Another important finding of our study is that the role of mass bleaching or mass PM events in mortality tends to be overestimated. Only one colony suffered from bleaching during autumn bleaching event died to the end of the experiment, and only one third of dead colonies got PM during the typhoon season. Our observation shows that in case of most colonies which died to the end of experiment, impact of individual stress (development of PM or bleaching) prevailed over the impact of mass or seasonal events.

## 5. Summary

The present study demonstrated that both bleaching and PM have pronounced seasonal variation, however, the maximum manifestation of these phenomena does not coincide in time. Bleaching peaks occurred in spring (April) and autumn (October), while the maximum of PM was observed in winter (December). This is due to the difference and, even, the divergence of factors affecting bleaching and PM (Figures 6, 7). In particular, the main predictor of bleaching is the temperature stress, but the increase in the percentage of colonies with PM is minimal during the temperature maximum. At the same time, the vast majority of colonies recovered from bleaching during the period of increased wave action, which is the main factor of the PM development. Even though, in most cases the density of coral population does not affect bleaching and PM, during the harshest periods it affects both measures in the opposite ways. Colonies in high-density settlements are more susceptible to bleaching than in sparse settlements, at the same time, nurseries with a higher colony density are less susceptible to PM development than low-density ones. Worth mentioning that both bleaching, and PM significantly yet not very strongly affect each other (Figure 7). Bleaching contributes to development of partial mortality. Even more is pronounced the effect of PM on corals, colonies suffering from PM become much more susceptible to bleaching.

The present experiment was designed in the way that excluded or minimized such potential causes of colony mortality as exposure to corallophagous fish, starfish *Acanthaster planci* and the mollusk *Drupella cornus*. This was due to both the design of nurseries, which excludes or reduces the impact of predatory starfish and mollusks, and to the consequences of chronic overfishing in Nha Trang Bay. The main cause of colony mortality in the present study was the development of algal fouling at the sites of colony lesions, which gradually spread over the entire surface of the colony. In turn, the intensive development of algal fouling is probably driven by the eutrophication of the bay (Tkachenko et al., 2016).

Considering that in the present experiment the young corals were studied, in the future ageing of corals will lead to increase of mortality rates. Moreover, other causes of mortality, such as bacterial or fungal infestation or destruction by perforating organisms, may manifest themselves. However, testing of this hypothesis requires further research.

The findings of the present study have valuable practical implications, providing insights for coral restoration plan for Central Vietnam. Specifically, it confirmed that late spring is the best season for planting of corals, it showed that in the late autumn corals require additional protection to negate

the destructive wave impact. Based on the data obtained, we suggest planting corals on elevated nurseries at the densities of 25-30 colonies per m<sup>2</sup>.

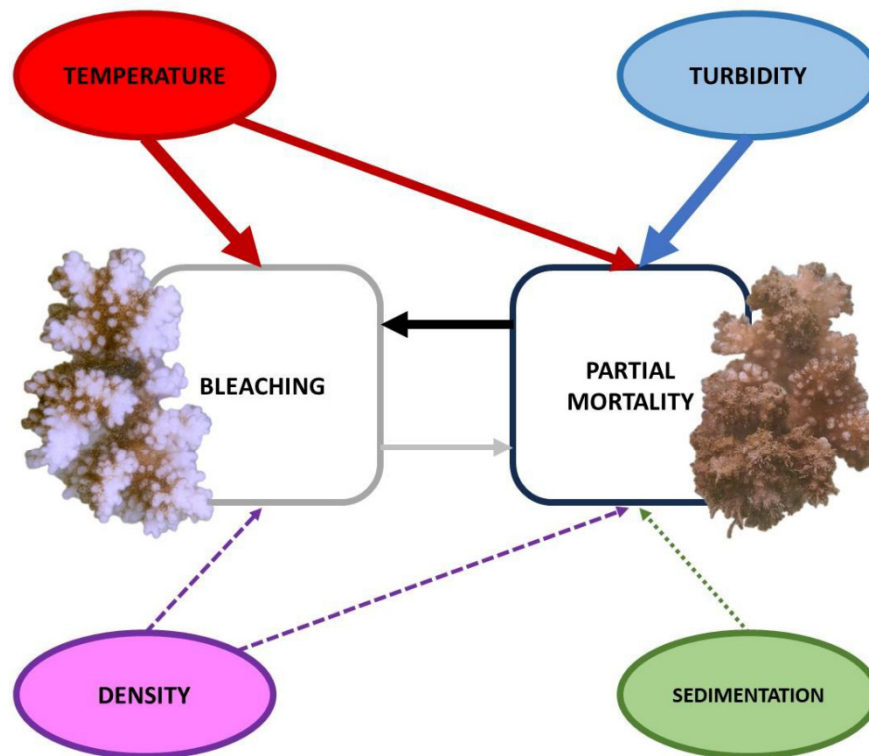


Figure. 7. The factors determining the development of coral colony bleaching and partial mortality.

**Supplementary Materials:** The following supporting information can be downloaded at the website of this paper posted on Preprints.org.

**Acknowledgements:** We are sincerely grateful to K.S. Tkachenko for providing us the temperature data. This study received the support from the research program Ecolan E3.1 No1 (or...) of the Joint Vietnam - Russia Tropical Science and Technology Research Center. This work was supported by a grant from the Russian Science Foundation, RSF 22-24-00836. Open-access publication fees were covered by the state of Bremen.

## References

- Naumov D.V., Propp M.V., Rybakov S.H. 1985. World of corals. Leningrad Gidrometizdat. [in Russian].
- Afrin Z. (2021). Determining Thermal stress using indices: sea surface temperature anomalies, degree heating days and heating rate to allow for-casting of coral bleaching risk. School of Marine Science, University of the South Pacific.
- Anthony K. R. N., Larcombe P. (2000). Coral reefs in turbid waters: sediment-induced stresses in corals and likely mechanisms of adaptation. Proceedings 9th International Coral Reef Symposium, Bali, Indonesia.
- Banaszak A.T., Lesser M.P. (2009). Effects of solar ultraviolet radiation on coral reef organisms. Photochem Photobiol Sci 8. doi:10.1039/b902763g
- Banner A. (1968). A fresh-water "kill" on the coral reefs of Hawaii. Hawaii Institute of Marine Biology, University of Hawaii.
- Berkelmans R., Willis B.L. (1999). Seasonal and local spatial patterns in the upper thermal limits of corals on the inshore Central Great Barrier Reef. Coral Reefs. 18. doi:10.1007/s003380050186
- Bellwood D.R., Hoey A.S., Choat J.H. (2003). Limited functional redundancy in high diversity systems: resilience and ecosystem function on coral reefs. Ecology Letters. 6:4. doi:10.1046/j.1461-0248.2003.00432.x



- Birrell C.L., McCook L.J., Willis B.L. (2005). Effects of algal turfs and sediment on coral settlement. *Marine Pollution Bulletin*. 51:1–4. doi:10.1016/j.marpolbul.2004.10.022
- Britayev T.A., Petrochenko R.A., Burmistrova Yu.A., Nguyen T.H., Lishchenko F.V. (2023). Density and bleaching of corals and their relationship to the coral symbiotic community. *Diversity*. 15:3. doi:10.3390/d15030456
- Brown B.E. Coral bleaching: causes and consequences. (1997). *Coral Reefs*. 16. doi:10.1007/s003380050249
- Brown B.E., Dunne R.P., Ambarsari I., Le Tissier M., Satapoomin U. (1999). Seasonal fluctuations in environmental factors and variations in symbiotic algae and chlorophyll pigments in four Indo-Pacific coral species. *MEPS*. 191. doi:10.3354/meps191053
- Brown C.J., Saunders M.I., Possingham H.P., Richardson A.J. (2013). Managing for Interactions between local and global stressors of ecosystems. *PLoS ONE*. 8:6. doi:10.1371/journal.pone.0065765
- Carilli J., Donner S.D., Hartmann A.C. (2012). Historical temperature variability affects coral response to heat stress. *PLoS ONE*. 7:3. doi:10.1371/journal.pone.0034418
- Coles, S.L., Jokiel, P.L. (1978). Synergistic effects of temperature, salinity and light on the hermatypic coral *Montipora verrucosa*. *Marine Biology*. 49. doi:10.1007/BF00391130
- Combillet, L., Fabregat-Malé, S., Mena, S., Marín-Moraga, J. A., Gutierrez, M., and Alvarado, J. J. (2022). *Pocillopora* spp. growth analysis on restoration structures in an Eastern Tropical Pacific upwelling area. *PeerJ* 10: e13248. doi:10.7717/peerj.13248
- Cornwall C.E., Comeau S., Kornder N.A., Perry C.T., Hooideonk R., DeCarlo T.M., Pratchett M.S., Anderson K.D., Browne N., Carpenter R., Diaz-Pulido G., D'Olivo J.P., Doo S.S., Figueiredo J., Fortunato S.A.V., Kennedy E., Lantz C.A., McCulloch M.T., González-Rivero M., Schoepf V., Smithers S.G., Lowe R.J. (2021). Global declines in coral reef calcium carbonate production under ocean acidification and warming. *Proc Natl Acad Sci U S A*. 118:21. doi:10.1073/pnas.2015265118
- Crain C.M., Kroeker K., Halpern B.S. Interactive and cumulative effects of multiple human stressors in marine systems. (2008). *Ecology Letters*. 11. doi:10.1111/j.1461-0248.2008.01253.x
- Dautova T.N., Latypov Y.Y., Savinkin O.V. (2007). "Annotated checklist of scleractinian corals, millepores and *Heliopora* of Nhatrang Bay" in *Benthic fauna of the Bay of Nhatrang Southern Vietnam*, eds. T.A. Britayev and D.S. Pavlov (KMK Scientific Press), 13-61.
- Diaz-Pulido G., Harri S., McCook L.J., Hoegh-Guldberg O. (2010). The impact of benthic algae on the settlement of a reef-building coral. *Coral Reefs*. 29. doi:10.1007/s00338-009-0573-x
- Douglas A.E. Coral bleaching – how and why? (2003). *Marine Pollution Bulletin*. 46. doi:10.1016/S0025-326X(03)00037-7
- Eakin C.M., Lough J.M., Heron S.F. (2009). "Climate Variability and Change: Monitoring Data and Evidence for Increased Coral Bleaching Stress" In *Coral Bleaching: Patterns, Processes, Causes and Consequences*, eds. M. J. H. Oppen and J. M. Lough (Springer, Berlin, Heidelberg), 41-67.
- Eddy T.D., Lam V.W.Y., Reygondeau G., Cisneros-Montemayor A.M., Greer K., Palomares M., Bruno J.F., Ota Y., Cheung W. (2021). Global decline in capacity of coral reefs to provide ecosystem services. 4:9. doi:10.1016/j.onear.2021.08.016
- Fabrizius K. (2011). "Factors determining the resilience of coral reefs to eutrophication: a review and conceptual model" in *Coral Reefs: An Ecosystem in Transition*, eds. Z. Dubinsky and N. Stambler (Springer), 493-505.
- Ferrario F., Beck M.W., Storlazzi C.D., Micheli F., Shepard C.C., Airoidi L. (2014). The effectiveness of coral reefs for coastal hazard risk reduction and adaptation. *Nature Communications*. 13:5:3794. doi:10.1038/ncomms4794
- Ferse S.C.A. (2010). Poor Performance of Corals Transplanted onto Substrates of Short Durability. *Restoration Ecology*. 18:4. doi:10.1111/j.1526-100X.2010.00682.x
- Fine M., Tchernov D. (2007). Scleractinian coral species survive and recover from decalcification. *Science*. 315:5820. doi:10.1126/science.1137094
- Fisher R., Bessell-Browne P., Jones R. (2019). Synergistic and antagonistic impacts of suspended sediments and thermal stress on corals. *Nature Communications*. 10:1. doi:10.1038/s41467-019-10288-9
- Fitt W.K., McFarland F.K., Warner M.E., Chilcoat G.C. (2000). Seasonal patterns of tissue biomass and densities of symbiotic dinoflagellates in reef corals and relation to coral bleaching. *Limnol. Oceanogr*. 45:3. doi:10.4319/lo.2000.45.3.0677

- Fitt W.K., Brown B.E., Warner M.E., Dunne R.P. (2001). Coral bleaching: Interpretation of thermal tolerance limits and thermal thresholds in tropical corals. *Coral Reefs*. 20:1. doi:10.1007/s003380100146
- Fong J., Tang P.P.Y., Deignan L.K., Seah J.C.L., McDougald D., Rice S.A., Todd P.A. Chemically Mediated Interactions with Macroalgae Negatively Affect Coral Health but Induce Limited Changes in Coral Microbiomes. *Microorganisms* 2023, 11, 2261. <https://doi.org/10.3390/microorganisms11092261>
- Glynn P.W. Effects of the 1997-98 El Niño-Southern Oscillation on Eastern Pacific corals and coral reefs: An overview. (2000). *Proceedings 9th International Coral Reef Symposium, Bali, Indonesia*. 2, 23-27
- Guillemot N., Chabanet P., Le Pape O. Cyclone effects on coral reef habitats in New Caledonia (South Pacific). (2010). *Coral Reefs*. 29. doi:10.1007/s00338-010-0587-4
- Harmelin-Vivien L.M. The Effects of Storms and Cyclones on Coral Reefs: A Review. (1994). *Journal of Coastal Research*. 12, 211-231.
- Hennige S., Larsson A., Orejas C., Gori A., De Clippele L., Lee Y., Jimeno G., Georgoulas K., Kamenos N., Roberts J. (2021). Using the Goldilocks Principle to model coral ecosystem engineering. *Proc Biol Sci*. 288:1956. doi:10.1098/rspb.2021.1260
- Heron S., Morgan J., Eakin M., Skirving W. (2008). "Hurricanes and their effects on coral reefs" in *Status of Caribbean Coral Reefs after Bleaching and Hurricanes in 2005*. eds. C. Wilkinson, D. Souter (Global Coral Reef Monitoring Network, and Reef and Rainforest Research Centre), 31-36
- Hoegh-Guldberg O. (1999). Climate Change, Coral Bleaching and the Future of the World's Coral Reefs. *Marine and Freshwater Research*. 50. doi:10.1071/MF99078
- Hoegh-Guldberg O. (2011). Coral reef ecosystems and anthropogenic climate change. *Regional Environmental Change*. 11. doi:10.1007/s10113-010-0189-2
- Hoegh-Guldberg O. (2014). Coral reefs in the Anthropocene: persistence or the end of the line? *Geol. Soc. Spec*. 395:1. doi:10.1144/SP395.17
- Hughes T.P., Barnes M.L., Bellwood D.R., Cinner J.E., Cumming G.S., Jeremy B., Jackson J., Kleypas J., Leemput I.A., Lough J.M., Morrison T.H., Palumbi S.R., Nes E.H., Scheffer M. (2017). Coral reefs in the Anthropocene. *Nature*. 546(7656):82-90. doi:10.1038/nature22901
- Jokiel P., Hunter C., Taguchi S., Watarai L. (1993). Ecological impact of a fresh-water "reef kill" in Kaneohe Bay, Oahu, Hawaii. *Coral Reef*. 12. doi:10.1007/BF0033447
- Jokiel P., Brown E.K. (2004). Global warming, regional trends and inshore environmental conditions influence coral bleaching in Hawaii. *Global Change Biology*. 10. doi:10.1111/j.1365-2486.2004.00836.x
- Jokiel P. (2006). Impact of storm waves and storm floods on Hawaiian reefs. *Proceedings of the 10th International Coral Reef Symposium*, 282-284.
- Jompa J., McCook L. (2003). Contrasting effects of turf algae on corals: massive *Porites* spp. are unaffected by mixed-species turfs, but killed by the red alga *Anotrichium tenue*. *MEPS*. 258. doi:10.3354/meps258079
- Johnston, E.C., Forsman, Z.H., Flot, J.F., Schmidt-Roach S., Pinzón J.H.C., Knapp I., Toonen R.J. (2017). A genomic glance through the fog of plasticity and diversification in *Pocillopora*. *Sci Rep*. 7:5991. doi:10.1038/s41598-017-06085-3
- Le D.M., Vlasova G.A., Nguyen D.T.T., Pham H.S., Nguyen T.V. (2022). Distribution features of the weather conditions in Nha Trang Bay (The South China Sea). *Russian Journal of Earth Sciences*. 22. doi:10.2205/2022ES000791
- Latypov Y.Y. (2016). Results of Thirty Years of Research on Corals and Reefs of Vietnam. *Open Journal of Marine Science*. 6. doi:10.4236/ojms.2016.62023
- Lesser M.P. (2010). Coral Bleaching: Causes and Mechanisms. *Coral Reef*. doi:10.1007/978-94-007-0114-4\_23
- Lough J.M., Anderson K.D., Hughes T.P. (2018). Increasing thermal stress for tropical coral reefs: 1871–2017. *Sci Rep*. 8. doi:10.1038/s41598-018-24530-9.
- Loya Y., Sakai K., Yamazato K., Nakano Y., Sambali H., van Woesik R. (2001). Coral bleaching: the winners and the losers. *Ecology Letters*. doi:10.1046/j.1461-0248.2001.00203.x
- Manzello D., Brandt M., Smith T., Lirman D., Hendee J., Nemeth R. (2007). Hurricanes benefit bleached corals. *PNAS*. 104:29. doi:10.1073/pnas.0701194104
- Mbije N.E.J., Spanier E., Rinkevich B. (2010). Testing the first phase of the 'gardening concept' as an applicable tool in restoring denuded reefs in Tanzania. *Ecological Engineering*. 36. doi:10.1016/j.ecoleng.2009.12.018
- McCook L. (2001). Competition between corals and algal turfs along a gradient of terrestrial influence in the nearshore central Great Barrier Reef. *Coral Reefs*. 19:4. doi:10.1007/s003380000119

- Meesters E.H., Wesseling I., Bak R.P.M (1996). Partial Mortality in Three Species of Reef-Building Corals and the Relation with Colony Morphology. *Bulletin of Marine Science*. 58, 838-852.
- Montano S., Seveso D., Galli P., Obura D. (2010). Assessing coral bleaching and recovery with a colour reference card in Watamu Marine Park, Kenya. *Hydrobiologia*. 655:1. doi:10.1007/s10750-010-0407-4
- Muller E.M., Sartor C., Alcaraz N., van Woesik R. (2020). Spatial Epidemiology of the Stony-Coral-Tissue-Loss Disease in Florida. *Front. Mar. Sci*. 7. doi:10.3389/fmars.2020.00163
- Nakamura T., van Woesik R. (2001). Water-flow rates and passive diffusion partially explain differential survival of corals during the 1998 bleaching event. *MEPS*. 212. doi:10.3354/meps212301
- Nakamura T., Yamasaki H., van Woesik R. (2003). Water flow facilitates recovery from bleaching in the coral *Stylophora pistillata*. *MEPS*. 256. doi:10.3354/meps256287
- Nir O., Gruber D.F., Shemesh E., Glasser E., Tchernov D. (2014). Seasonal Mesophotic Coral Bleaching of *Stylophora pistillata* in the Northern Red Sea. *PLoS ONE*. 9:1. doi:10.1371/journal.pone.0084968
- Nugues M.M., Roberts C.M. (2003). Partial mortality in massive reef corals as an indicator of sediment stress on coral reefs. *Marine Pollution Bulletin*. 46:3. doi:10.1016/S0025-326X(02)00402-2
- Oury N., Noël C., Mona S., Aurelle D., Magalon H. (2023). From genomics to integrative species delimitation? The case study of the Indo-Pacific *Pocillopora* corals. *Molecular Phylogenetics and Evolution*. 184:107803. doi:10.1016/j.ympev.2023.107803
- Pandolfi J.M., Bradbury R.H., Sala E., Hughes T.P., Bjorndal K.A., Cooke R.G., McArdle D., McClenachan L., Newman M.G.H., Paredes G., Warner R., Jackson J.B.C. (2003). Global Trajectories of the Long-Term Decline of Coral Reef Ecosystems. *Science*. 301:5635. doi: 10.1126/science.1085706
- Piniak G., Storlazzi C. (2008). Diurnal variability in turbidity and coral fluorescence on a fringing reef flat: Southern Molokai, Hawaii. *Estuarine, Coastal and Shelf Science*. 77:1. doi:10.1016/j.ecss.2007.08.023
- Pisapia C., Pratchett M.S. (2014) Spatial Variation in Background Mortality among Dominant Coral Taxa on Australia's Great Barrier Reef. *PLoS ONE*. 9:6. doi:10.1371/journal.pone.0100969
- Philipp E., Fabricius K. (2003). Photophysiological stress in scleractinian corals in response to short-term sedimentation. *J Exp Mar Biol Ecol*. 287:1. doi:10.1016/S0022-0981(02)00495-1
- Qin Z., Yu K., Wang Y., Xu L., Huang X., Chen B., Li Y., Wang W., Pan Z. (2019). Spatial and Intergeneric Variation in Physiological Indicators of Corals in the South China Sea: Insights Into Their Current State and Their Adaptability to Environmental Stress. *Journal of Geophysical Research: Oceans*. doi:10.1029/2018JC014648
- Reaka-Kudla M., Wilson D., Wilson E. (1997). *The Global Biodiversity of Coral Reefs: A Comparison with Rain Forests*. Joseph Henry Press. 83-108.
- Rasher D.B., Stout E.P., Engel S., Kubanek J., Hay M.E. Macroalgal terpenes function as allelopathic agents against reef corals. *Proc. Natl. Acad. Sci. USA* 2011, 108, 17725–17731
- Rivas N., Gómez C.E., Millán S., Mejía-Quintero K., Chasqui L. (2023). Coral reef degradation at an atoll of the Western Colombian Caribbean. *PeerJ*. doi:10.7717/peerj.15057
- Rodríguez-Villalobos J.C., Work T.M., Calderon-Aguilera L.E., Reyes-Bonilla H., Hernández L. (2015). Explained and unexplained tissue loss in corals from the Tropical Eastern Pacific. *DAO*. 116. doi:10.3354/dao02914.
- Silbiger N.J., Nelson C.E., Remple K., Sevilla J.K., Quinlan Z.A., Putnam H.M., Fox M.D., Donahue M.J. (2018). Nutrient pollution disrupts key ecosystem functions on coral reefs. *Proceedings of the Royal Society*. doi:10.1098/rspb.2017.2718
- Siebeck U.E., Marshall N.J., Klüter A., Hoegh-Guldberg O. (2006). Monitoring coral bleaching using a colour reference card. *Coral Reefs*. 25:3. doi:10.1007/s00338-006-0123-8
- Shu L., Ke-fu Yu., Shi Qi., Chen T. (2008). Interspecies and spatial diversity in the symbiotic *Zooxanthellae* density in corals from northern South China Sea and its relationship to coral reef bleaching. *Chinese Science Bulletin*. 53:2. doi:10.1007/s11434-007-0514-4
- Shu L., Ke-fu Yu., Chen T., Shi Qi. (2011). Assessment of coral bleaching using symbiotic *zooxanthellae* density and satellite remote sensing data in the Nansha Islands, South China Sea. *Chinese Science Bulletin*. 56:10. doi:10.1007/s11434-011-4390-6
- Smith J.E., Shaw M., Edwards R., Obura D., Pantos O., Sala E., Sandin S., Smriga S., Hatay M., Rohwer F. (2006). Indirect effects of algae on coral: algae-mediated, microbe-induced coral mortality. *Ecology letters. Ecol Lett*. 9:7. doi: 10.1111/j.1461-0248.2006.00937.x

- Tkachenko K.S. Degradation of Coral Reefs under Complex Impact of Natural and Anthropogenic Factors with Nha Trang Bay (Vietnam) as an Example. (2023). *Biology Bulletin Reviews*. 13: 5. doi:10.1134/S2079086423050079
- Tkachenko K.S., Britayev T.A., Huan N.H., Pereladov M.V., Latypov Y.Y. (2016). Influence of anthropogenic pressure and seasonal upwelling on coral reefs in Nha Trang Bay (Central Vietnam). *Marine Ecology*. doi:10.1111/maec.12382
- Tkachenko K.S., Dung Vu.V., Ha Vo.T., Huan N.H. (2023). Coral reef collapse in South-Central Vietnam: a consequence of multiple negative effects. *Aquat. Ecol.* 57. doi:10.1007/s10452-022-09994-2
- Wangpraseurt D., Weber M., Røy H., Polerecky L., de Beer D., Suharsono, Nugues M. (2012). In situ oxygen dynamics in coral-algal interactions. *PLoS One*. 7:2. doi:10.1371/journal.pone.0031192
- Warner M.E., Chilcoat G.C., McFarland F.K., Fitt W.K. (2002). Seasonal fluctuations in the photosynthetic capacity of photosystem II in symbiotic dinoflagellates in the Caribbean reef-building coral *Montastraea*. *Marine Biology*. 141. doi:10.1007/s00227-002-0807-8
- Wenger A.S., Fabricius K., Jones G.P., Brodie J.E. (2015). Effects of sedimentation, eutrophication, and chemical pollution on coral reef fishes. *Ecology of Fishes on Coral Reefs*. doi:10.1017/CBO9781316105412.017
- Weiss A., Martindale R. (2017). Crustose coralline algae increased framework and diversity on ancient coral reefs. *PLoS ONE*. 12:8. doi:10.1371/journal.pone.0181637.
- Wilkinson C. (2004). Status of coral reefs of the world. Australian Institute of Marine Science. 1.
- Zweifler A., O'leary M., Morgan K., Browne N. (2021). Turbid Coral Reefs: Past, Present and Future-A Review. *Diversity*. 13:6. doi:10.3390/d13060251

**Disclaimer/Publisher's Note:** The statements, opinions and data contained in all publications are solely those of the individual author(s) and contributor(s) and not of MDPI and/or the editor(s). MDPI and/or the editor(s) disclaim responsibility for any injury to people or property resulting from any ideas, methods, instructions or products referred to in the content.