

Article

Not peer-reviewed version

---

# PEDOT:PSS versus Polyaniline: A Comparative Study of Conducting Polymers for Organic Electrochemical Transistors

---

Ryotaro Kawamura and [Tsuyoshi Michinobu](#) \*

Posted Date: 21 November 2023

doi: 10.20944/preprints202311.1298.v1

Keywords: organic electrochemical transistor; PEDOT:PSS; PANI; film morphology



Preprints.org is a free multidiscipline platform providing preprint service that is dedicated to making early versions of research outputs permanently available and citable. Preprints posted at Preprints.org appear in Web of Science, Crossref, Google Scholar, Scilit, Europe PMC.

Copyright: This is an open access article distributed under the Creative Commons Attribution License which permits unrestricted use, distribution, and reproduction in any medium, provided the original work is properly cited.

*Article*

# PEDOT:PSS versus Polyaniline: A Comparative Study of Conducting Polymers for Organic Electrochemical Transistors

Ryotaro Kawamura and Tsuyoshi Michinobu \*

Department of Materials Science and Engineering, Tokyo Institute of Technology, 2-12-1 Ookayama, Meguro-ku, Tokyo 152-8552, Japan; kawamura.r.ah@m.titech.ac.jp

\* Correspondence: michinobu.t.aa@m.titech.ac.jp; Tel.: +81-3-5734-3774

**Abstract:** Organic electrochemical transistors (OECTs) based on conducting polymers have attracted significant attention in the field of biosensors. PEDOT:PSS and polyaniline (PANI) are representative conducting polymers used for OECTs. While there are many studies on PEDOT:PSS, there are not so many reports on PANI-based OECTs, and a detailed study to compare these two polymers has been desired. In this study, we investigated the fabrication conditions to produce the best performance in the OECTs using the above-mentioned two types of conducting polymers. Two main parameters were film thickness and film surface roughness. For PEDOT:PSS, the optimal conditions for fabricating thin films were a spin-coating rate of 3000 rpm and DI water immersion time of 18 hours. For PANI, the optimal conditions were a spin-coating rate of 3000 rpm and DI water immersion time of 5 seconds, and adding dodecylbenzenesulfonic acid (DBSA) was found to provide better OECT performances. The OECT performances based on PEDOT:PSS were superior to those based on PANI in terms of conductivity and transconductance, but PANI showed excellence in terms of film thickness and surface smoothness, leading to the good reproducibility of OECT performances.

**Keywords:** organic electrochemical transistor; PEDOT:PSS; PANI; film morphology

## 1. Introduction

Conducting polymers are expected to find applications in various industrial fields because of their light weight, low cost, and flexibility [1]. They become conductive by either chemical or electrochemical doping, which injects charge carriers into polymers [2]. Doping allows the conductivity of polymers to be freely controlled, as well as other physical properties. Poly(3,4-ethylenedioxythiophene) polystyrene sulfonate (PEDOT:PSS) is one of the most studied conducting polymers, and its applications in sensing and other technologies, such as pH sensors [3], glucose sensors [4], and enzyme sensors [5], are in practical use [6].

PEDOT:PSS is usually dispersed as colloids in an aqueous solution, and the thin films can be prepared by solution casting. It is known that the conductivity of PEDOT:PSS increases by nearly two orders of magnitude by adding specific solvents, such as ethylene glycol, dimethyl sulfoxide, and sorbitol [7]. When OECT applications are considered, PEDOT:PSS films must be crosslinked because OECTs operate with aqueous electrolytes. Therefore, effective cross-linkers, such as (3-glycidyloxypropyl)trimethoxysilane (GOPS), are used to make them insoluble in aqueous solutions [8].

In addition to PEDOT:PSS, polyaniline (PANI) is a typical example of a conducting polymer. One of the main characteristics of PANI is that the raw material, aniline, is relatively inexpensive and oxidative polymerization is easy. Furthermore, it is known that the solubility in organic solvents can be improved by using dopants, such as 10-camphorsulfonic acid (CSA) and dodecylbenzenesulfonic acid (DBSA) [2]. Therefore, in recent years, PANI is expected to be applied to the field of sensing [9]. On the other hand, it has been pointed out that the conductivity of PANI is inferior to PEDOT:PSS. Therefore, the use of PANI in the development of biosensors with good sensitivity and accuracy remains a challenge.

There are many examples of OECTs based on conducting polymers [10–19]. However, further research is needed to improve their performance for use in high-performance biosensors and related technologies. In this study, OECTs based on two well-known conducting polymers, PEDOT:PSS and PANI, were fabricated and their device performances and durability were optimized. By comparing the two types of conducting polymers, we aim to discuss more optimal conditions for OECTs using conducting polymers and especially the applicability of PANI-based OECTs, because there are few precedents [20,21].

2. Materials and Methods

PEDOT:PSS (0.5-1wt% dispersion in water) was purchased from Sigma-Aldrich. Polyaniline (PANI) was kindly supplied from the Idemitsu Co. Ethylene glycol was purchased from Kanto Chemicals Co. (3-Glycidyloxypropyl)trimethoxysilane (GOPS) and dodecylbenzene sulfonic acid (DBSA) were purchased from TCI. These chemicals were used to blend the PEDOT:PSS or PANI solution. For the preparation, 150 μL (3%) of ethylene glycol, 12 μL (about 0.25%) of DBSA, and 50 μL (1%) of GOPS were mixed with 5 mL of the commercial PEDOT:PSS solution. First, ethylene glycol and DBSA were added to PEDOT:PSS and stirred for 10 minutes with sonication. Then, 50 μL (1%) of GOPS was added and stirred for 1 minute while being sonicated again. For PANI:DBSA, about 12μL of DBSA was mixed with 5 mL of PANI and stirred with sonication.

The fabrication of OECTs was done with care to avoid contamination with impurities. First, the surface of the electrode substrate was cleaned with DI water and made hydrophilic by irradiating it with ozone plasma for 20 minutes. The commercial PEDOT:PSS solution was spin-coated onto the surface-modified electrode. First, the rotation speed was set to 4000 rpm, and DI water was dropped and rotated for 30 seconds to briefly clean the surface. After that, 75 μL of the PEDOT:PSS solution was dropped and held without rotation for 100 seconds. Spin coating was then performed at a constant rotation speed (1000-3000 rpm) for 40 seconds. After spin-coating was completed, it was annealed at 135 °C for 1 hour to form a PEDOT:PSS film on the electrode. The electrode was immersed in DI water (0~18 h) to remove impurities such as low molecular weight PEDOT and form the smooth film surface. Coatings in unnecessary areas were removed by blowing water off the surface. The prepared samples are summarized Table 1. In the case of PANI and PANI:DBSA, ozone plasma irradiation was not performed and chloroform was used to clean the electrodes instead of DI water. Other than these points, the same procedure was used for spin-coating, followed by annealing at 135 °C for 30 minutes. Immersing in DI water was performed only for 0 s and 5 s. The prepared samples are summarized in Table 2.

Table 1. Fabrication conditions of OECTs based on PEDOT:PSS.

Sample	Spin-coating rate (rpm) <sup>a</sup>	Immersion time <sup>b</sup>
P1000-5s	1000	5s
P1500-5s	1500	5s
P2000-5s	2000	5s
P2500-5s	2500	5s
P3000-5s	3000	5s
P2000-0s	2000	0s
P2000-5min	2000	5min
P2000-15min	2000	15min
P2000-1h	2000	1h
P2000-18h	2000	18h

<sup>a</sup> Spin-coating speed of the PEDOT:PSS solution. <sup>b</sup> Time to soak the spin-coated films in DI water.

**Table 2.** Fabrication conditions of OECTs based on PANI.

Sample	Spin-coating rate (rpm) <sup>a</sup>	Immersion time <sup>b</sup>
PA1000-5s	1000	5s
PA1500-5s	1500	5s
PA2000-5s	2000	5s
PA2500-5s	2500	5s
PA3000-5s	3000	5s
PA1500-0s	1500	0s
PAD1500-5s	1500	5s
PAD3000-5s	3000	5s
PAD1500-0s	1500	0s

<sup>a</sup> Spin-coating speed of the PANI solution. <sup>b</sup> Time to soak the spin-coated films in DI water.

In the OECT measurements, conductivity and transconductance values were calculated from the output and transfer characteristics. The electrodes used were  $L = 10\text{ }\mu\text{m}$  and  $W = 2500\text{ }\mu\text{m}$ . In the measurements of output characteristics, conductivities were calculated from the portion of the linear region with a gate voltage of 0 V. The measurement conditions were set for  $V_D$  from 0 V to 1.5 V and for  $V_G$  from 0 V to 2.0 V at 0.4 V intervals. For the measurement conditions of the transfer characteristics of the PEDOT:PSS device,  $V_G$  was set from 2.2 V to -1.0 V and  $V_D$  was fixed at -0.6 V. The transconductance that reached its peak due to the sudden change in drain current was replaced by the value before or after the peak.

3. Results

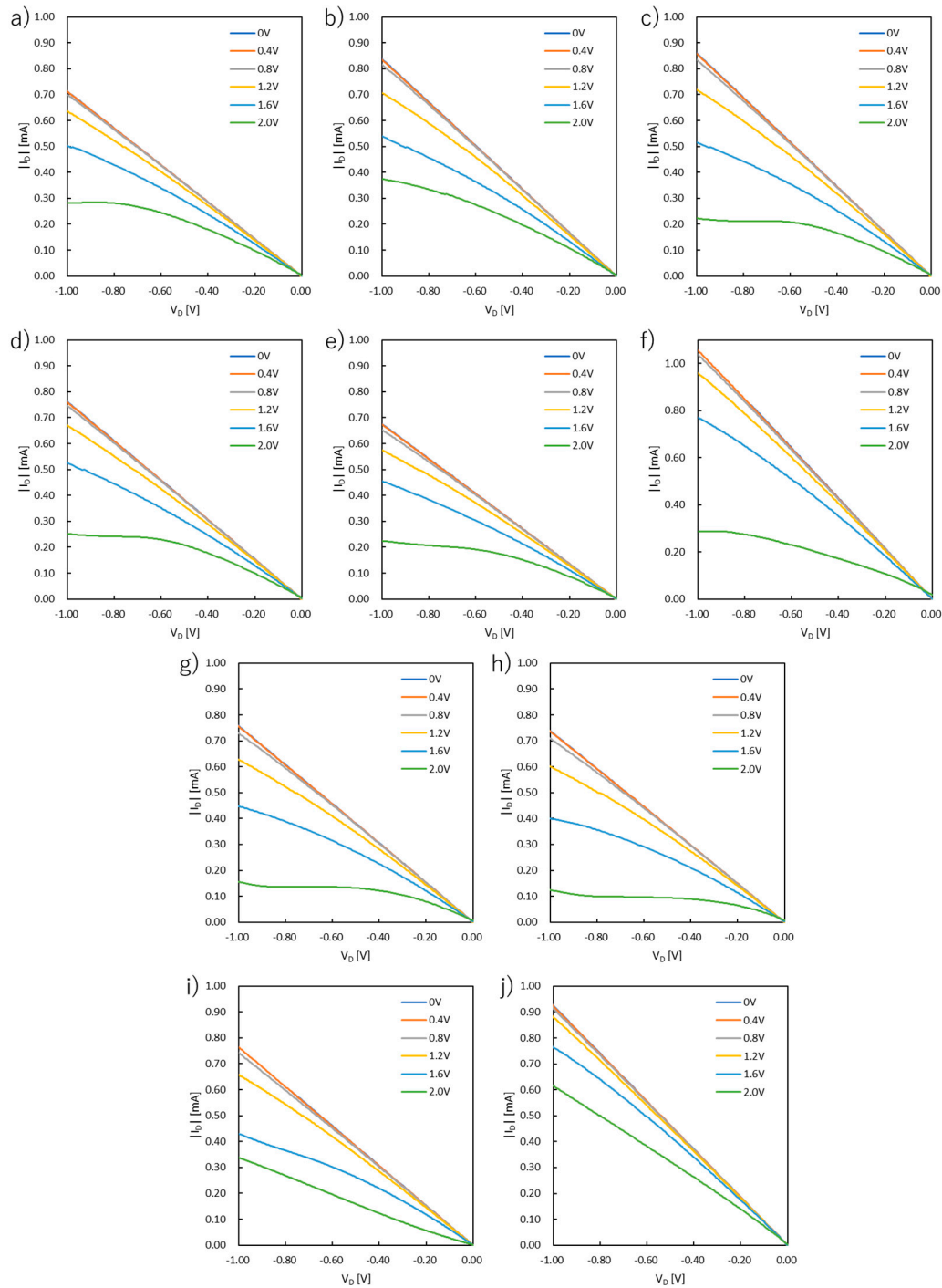
3.1. Output characteristics

The output curves of PEDOT:PSS devices and PANI devices are shown in Figure 1 and Figure 3, respectively. In the case of PANI devices, the  $V_D$  was set in the range of 0 V to 0.6 V and the  $V_G$  was measured from 0 V to 0.6 V at intervals of 0.1 V. The values of on-resistance, resistivity, and conductivity were estimated from the OECT performances and are summarized in Figures 2 and 4 and Tables S1 and S2.

The output characteristics of the PEDOT:PSS-based devices were optimized by changing the spin-coating rate. The results revealed that the resistance was higher than 1400  $\Omega$  when PEDOT:PSS films were prepared at the spin-coating rate of 1000 rpm and rinse time in DI water of 5 s (P1000-5s). This was also the case for the spin-coating rate of 3000 rpm (P3000-5s). However, when the spin-coating rate was 2000 rpm (P2000-5s), the lowest resistance value was obtained. On the other hand, the device (P3000-5s) showed the highest conductivity of 18.1  $\text{S m}^{-1}$ . Conductivity increased with the increasing spin-coating rate, which is most likely associated with the film thickness and morphology. There is a previous study that PEDOT:PSS films crystallize when they are thermally annealed [10]. This implies that, the thicker the film, the less uniform the crystallized PEDOT, and the thicker the films prepared at low spin-coating rates, the lower the conductivity. Overall, the film thickness is one of the significant parameters to optimize the electrical properties. Thinning the film thickness improves the calculated conductivity, but may increase resistance due to the decrease in channel area. Therefore, a film thickness of about 150 nm is considered optimal.

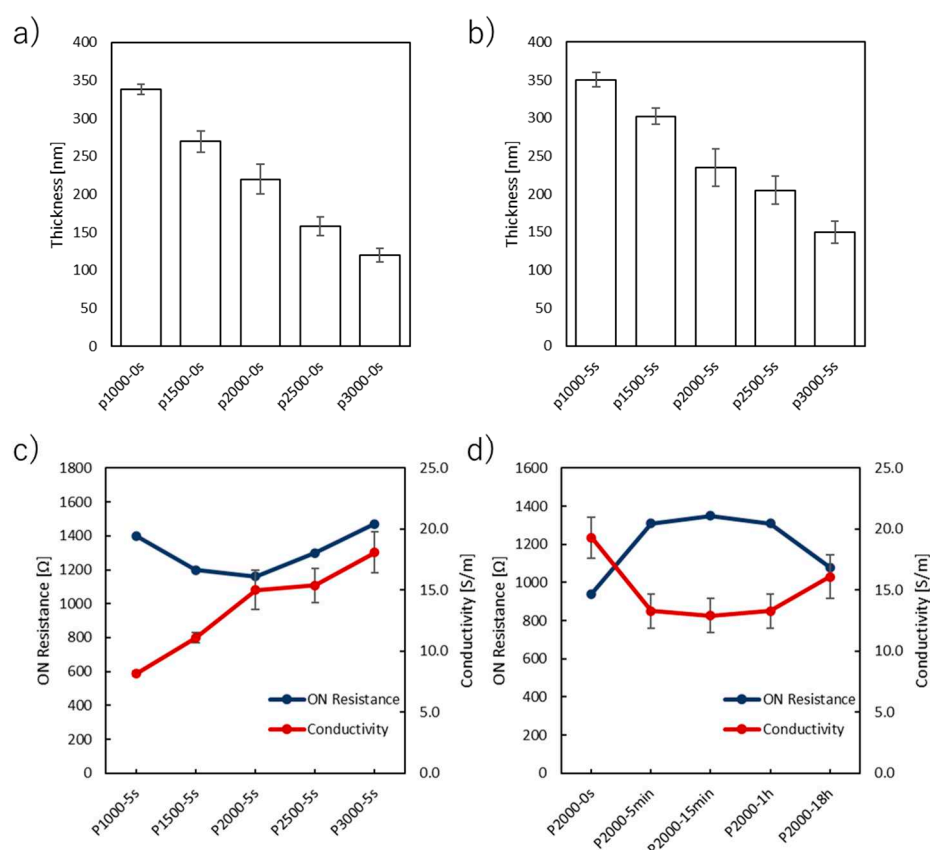
The as-cast films were immersed in DI water to obtain the optimized surface morphology. The immersion time in DI water was thus one of the parameters to achieve high-performance OECTs. The device based on the as-cast film (P2000-0s) gave the lowest resistance and highest conductivity. The conductivity decreased from P2000-0s to P2000-15min, but slightly increased when the immersion time was prolonged to 1 h (P2000-1h). The conductivity of the device (P2000-18h) was comparable to that of P2000-5s. The purpose of immersing the films in DI water was to obtain a better film surface by partially dissolving oligomers and impurities. However, the conductivity of the device (P2000-5s)

was indeed lower than that of P2000-0s. This result suggested that the as-cast film is sufficient for OECT applications.



**Figure 1.** Output curves of OECTs based on PEDOT:PSS: a) P1000-5s, b) P1500-5s, c) P2000-5s, d) P2500-5s, e) P3000-5s, f) P2000-0s, g) P2000-5min, h) P2000-15min, i) P2000-1h, and j) P2000-18h.





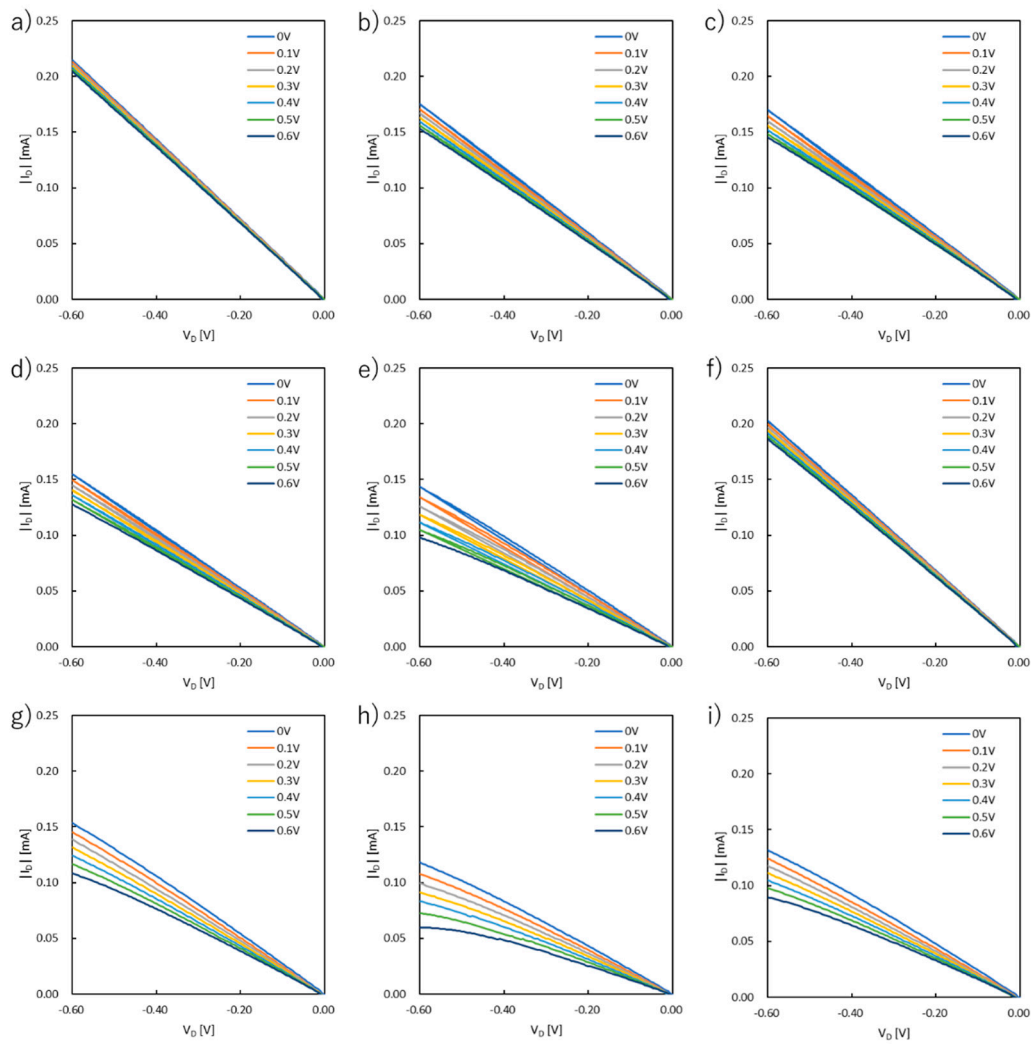
**Figure 2.** Film thicknesses of PEDOT:PSS OECTs at various spin-coating rates with the immersion time of (a) 0 s and (b) 5 s. The on-resistance and conductivity values at (a) various spin-coating rates with the constant immersion time of 5 s and (b) various immersion times with the constant spin-coating rate of 2000 rpm.

The output characteristics of the PANI-based OECTs showed efficient conductivities, although the devices prepared at the larger spin-coating rates had higher on-resistance. The disadvantage of a thinner film is that the channel bandwidth to be stored is considerably narrower, resulting in a lower conductivity. This effect also reduces the durability against potential difference loading between the source and drain electrodes. Specifically, the drain voltage could be applied up to about 1 V for PA1000-5s. However, in the PA3000-5s, the operation became unstable at around 0.6 V, and the drain current sharply dropped. For the film thickness, considering this issue, 3000 rpm is the upper limit of the spin-coating rate under the measurement conditions.

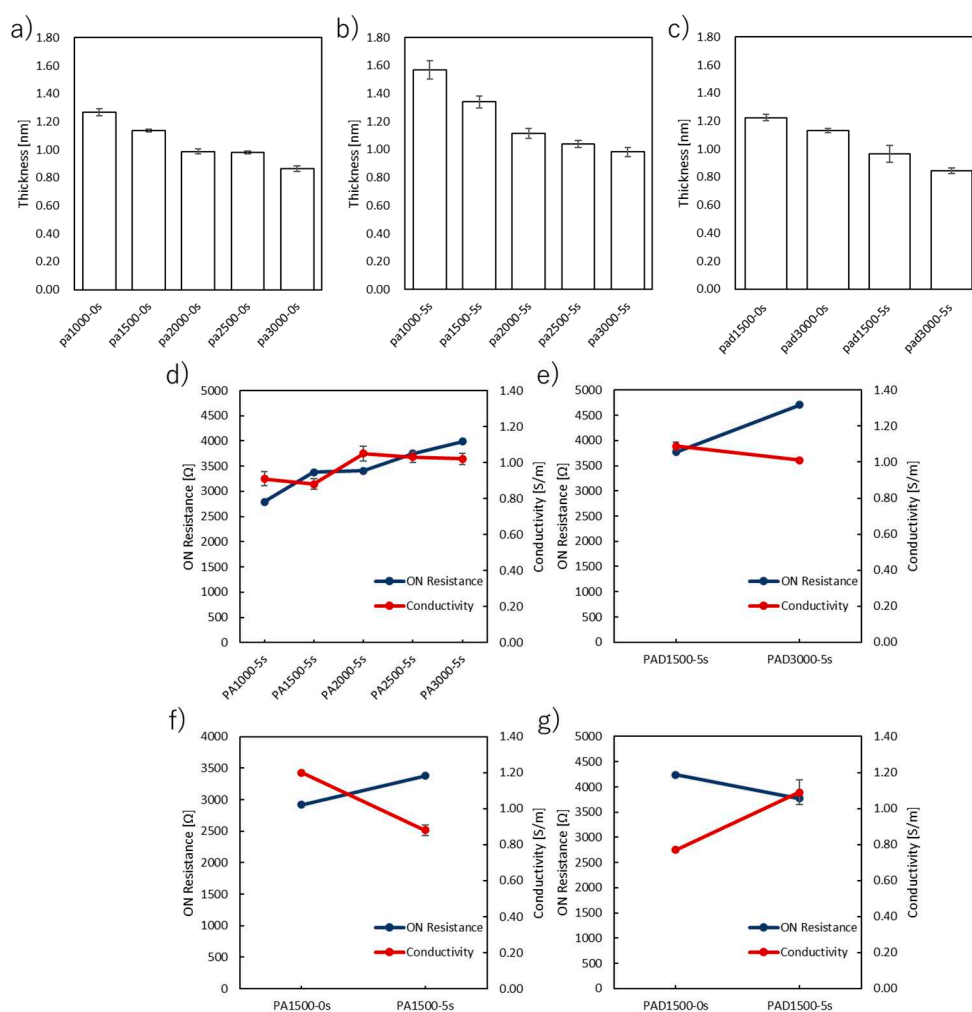
The immersion in DI water resulted in a decrease in the conductivity even after about 5 seconds of immersion. As for the film thickness, the surface was somewhat scraped by immersion, resulting in a thin film. However, the conductivities of the devices prepared at the high spin-coating rates were large, suggesting oxidation of the films. Therefore, this immersion operation in water was found to be unsuitable for PANI.

Similar to PANI, the conductivities of the PANI:DBSA devices with higher spin-coating rates were higher. When PAD1500-5s with DBSA was compared with PA1500-5s without DBSA, PAD1500-5s had higher on-resistance and thinner films. In addition, the conductivity was slightly improved by increasing the spin-coating rate. When PAD3000-5s and PA3000-5s were compared, the conductivity was similar. Comparing PAD1500-0s and PA1500-0s, the conductivity of PAD1500-0s was considerably lower. Since it was reported that the addition of DBSA to PANI decreases conducting and other related properties, the conductivity of PANI:DBSA without DI water washing was lower than that of the corresponding PANI film [22]. However, since the addition of DBSA most likely improved water resistance and chemical endurance, the conductivity increased when washed with

DI water. This is because the negative impact of DI water immersion is considerably smaller than that of the PANI film.



**Figure 3.** Output curves of OECTs based on PANI and PANI:DBSA: a) PA1000-5s, b) PA1500-5s, c) PA2000-5s, d) PA2500-5s, e) PA3000-5s, f) PA1500-0s, g) PAD1500-5s, h) PAD3000-5s, and i) PAD1500-0s. PA and PAD represent PANI and PANI:DBSA, respectively.



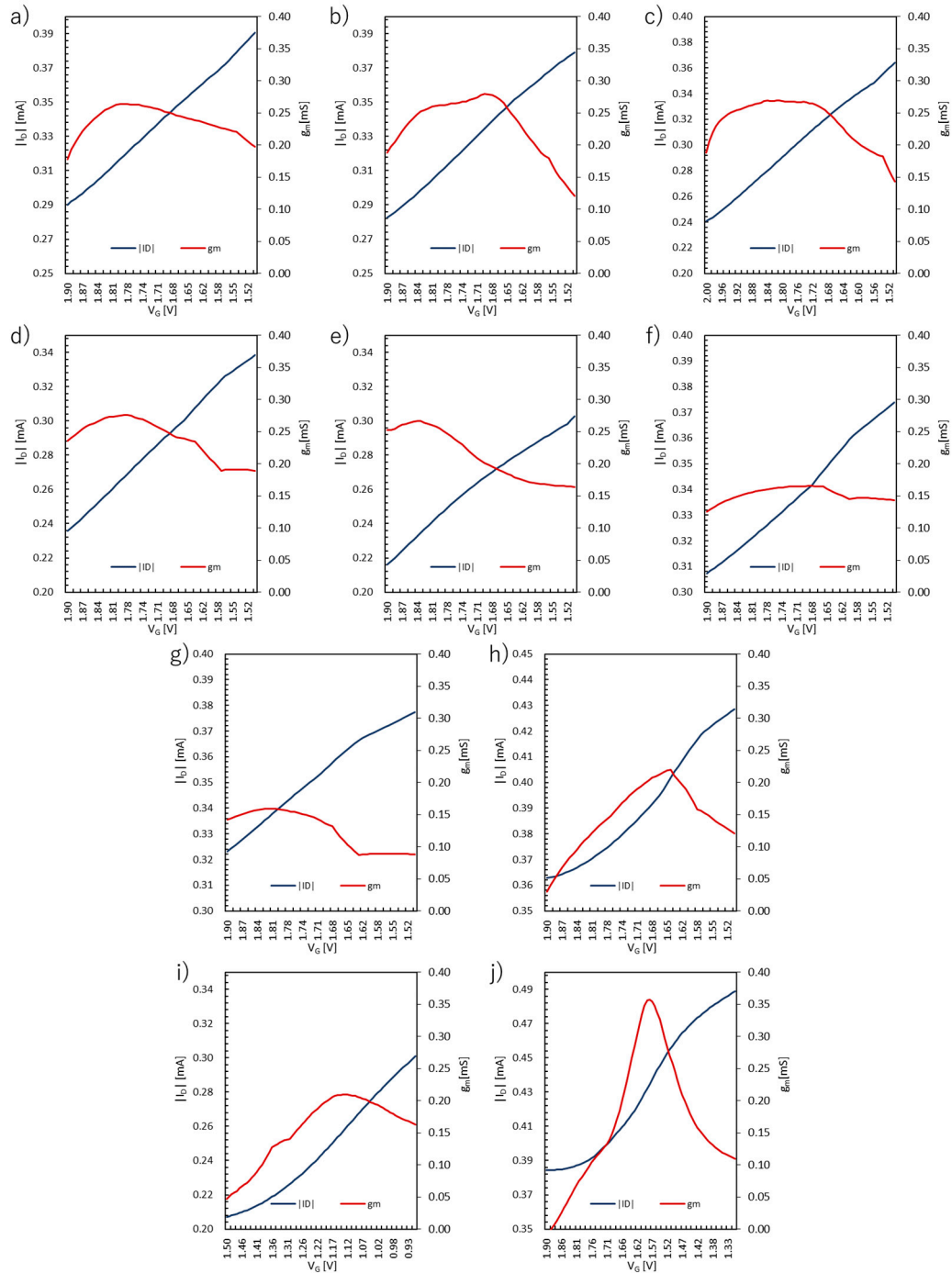
**Figure 4.** Film thicknesses of PANI OECTs at various spin-coating rates with the immersion time of (a) 0 s and (b) 5 s. (c) Film thicknesses of PANI:DBSA OECTs at various spin-coating rates with the immersion time of 5 s. The on-resistance and conductivity values of (d,f) PANI and (e,g) PANI:DBSA at (d,e) various spin-coating rates with the constant immersion time of 5 s and (f,g) various immersion times with the constant spin-coating rate of 1500 rpm.

### 3.2. Transfer characteristics

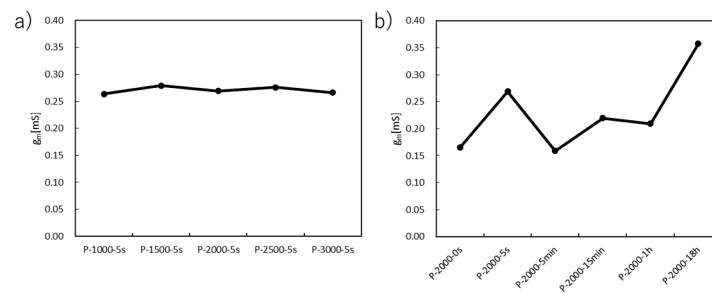
The transfer curves and transconductance of the PEDOT:PSS devices are shown in Figures 5 and 6, respectively. The highest transconductance of 0.280 mS was obtained for P1500-5s when the spin-coating rate was optimized. The next highest value was 0.276 mS for P2500-5s, and the other three types had the maximum transconductance in the range of 0.260~0.270 mS. The error from the average value of the maximum transconductance was within  $\pm 0.01$  mS, indicating that the maximum transconductance hardly changes as the film thickness changes.

On the other hand, the immersion time in DI water showed a different behavior. The maximum transconductance increased with immersion time short enough to momentarily wash the surface and decreased with longer immersion time. The maximum value gradually increased with continued immersion for a longer period. Two sets of data, P2000-0s and P2000-5min, showed maximum values well below 0.20 mS. Therefore, it is likely that the transconductance is affected by the surface condition of the film due to the immersion in DI water.





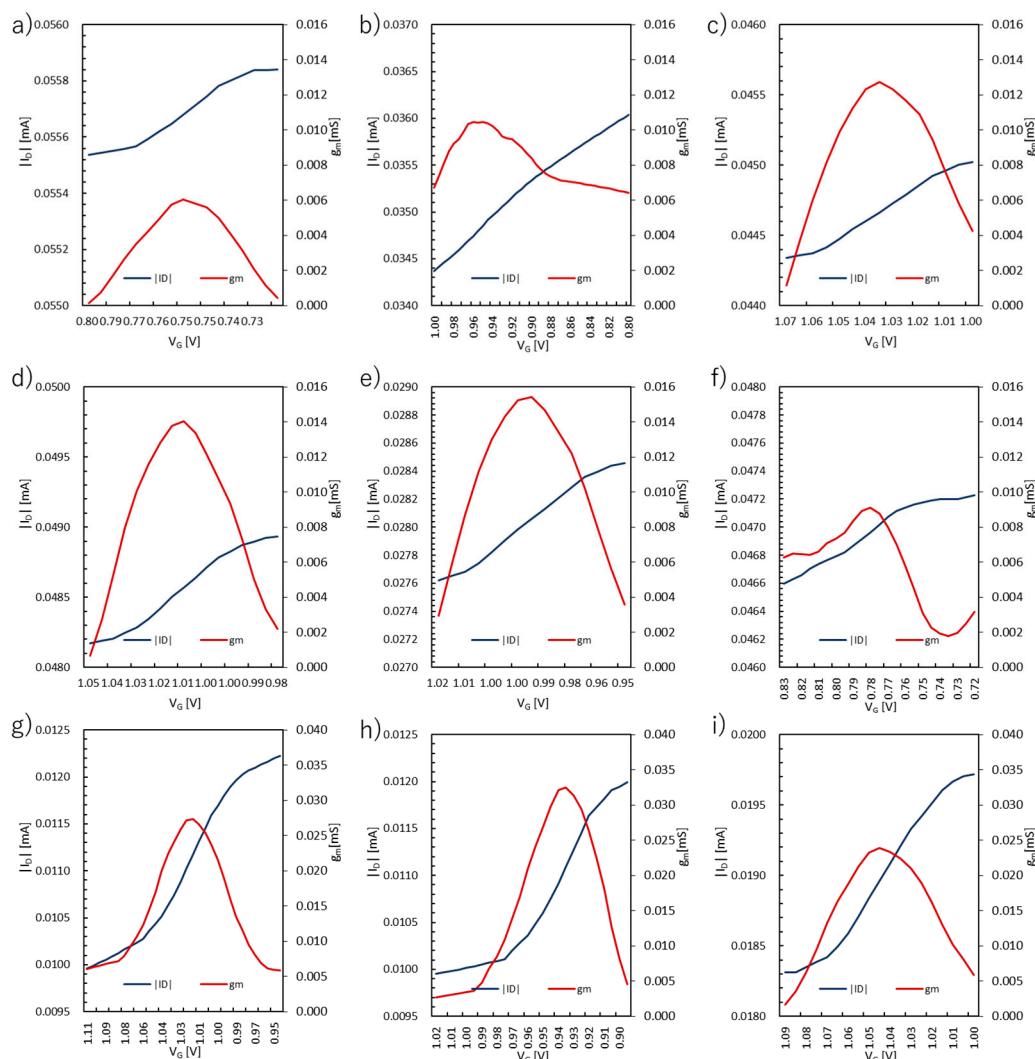
**Figure 5.** Transfer curves of the PEDOT:PSS devices: a) P1000-5s, b) P1500-5s, c) P2000-5s, d) P2500-5s, e) P3000-5s, f) P2000-0s, g) P2000-5min, h) P2000-15min, i) P2000-1h, and j) P2000-18h.



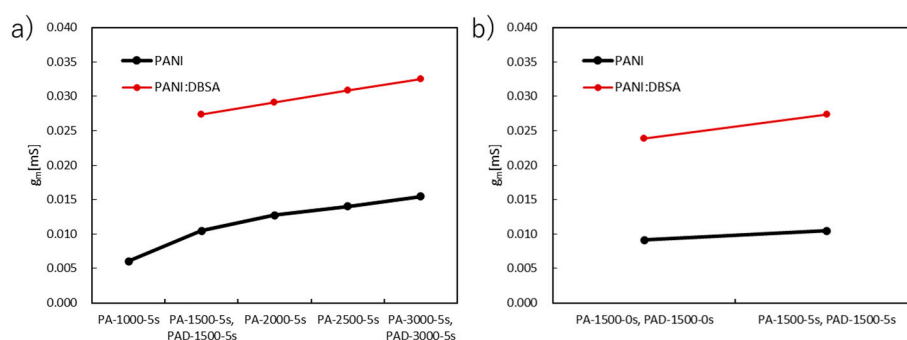
**Figure 6.** Transconductance of the PEDOT:PSS devices at (a) various spin-coating rates and (b) various immersion times in DI water.

For PANI, the  $V_G$  was set from 1.5 V to 0 V, and the  $V_D$  was fixed at -0.2 V. The transfer curves and transconductance of the PANI devices are shown in Figures 7 and 8, respectively. In the case of PANI, the maximum transconductance increased with increasing spin-coating rates, with PA3000-5s having the highest value of 0.0154 mS. This may be because of the improved surface morphology of the film. However, as the spin-coating rate increased, the gate voltage durability of the PANI film caused an issue. The highest applied voltage durability was 2.0 V for PA1000-5s, which tended to gradually decrease as the film became thinner. Samples of PANI films were prepared at spin-coating rates of 3500 and 4000 rpm, and measurements were attempted under the same conditions. However, the attempted measurement conditions did not provide data from which the transconductance could be calculated. This trend was also true for PANI:DBSA, with PAD3000-5s being higher than PAD1500-5s, at 0.0325 mS. Furthermore, when compared with and without the addition of DBSA, the maximum transconductance more than doubled with the addition of DBSA. Similar to the PANI film, we prepared the PANI:DBSA film at 4000 rpm, but the transconductance could not be calculated.

When the PANI films were immersed in DI water, the transconductance values were higher than those of the films that were not immersed. The surface morphology of the film is thought to have a significant impact. PANI:DBSA films also improved the maximum transconductance by a factor of 2 or more.



**Figure 7.** Transfer curves of the devices based on PANI and PANI:DBSA: a) PA1000-5s, b) PA1500-5s, c) PA2000-5s, d) PA2500-5s, e) PA3000-5s, f) PA1500-0s, g) PAD1500-5s, h) PAD3000-5s, and i) PAD1500-0s.

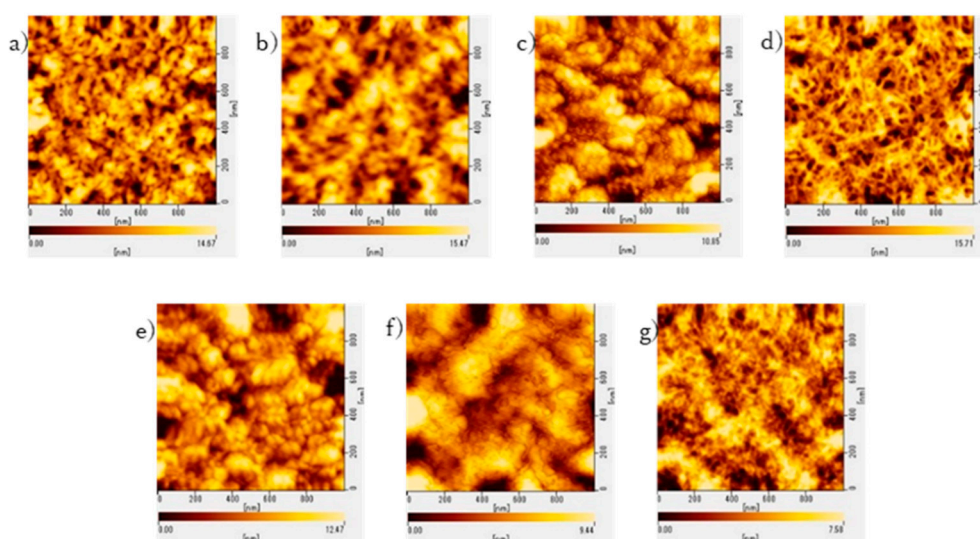


**Figure 8.** Transconductance of the PANI and PANI:DBSA devices at (a) various spin-coated rates and (b) various immersion times in DI water.

### 3.3. Surface morphology

The surface morphology of the spin-coated films was observed by atomic force microscopy (AFM). Samples were prepared by spin-coating the polymer solutions on a glass substrate using the same procedure as for an electrode substrate, and the center area of the glass substrate was observed. The PEDOT:PSS samples observed were P1000-5s, P2000-5s, P3000-5s, P2000-0s, P2000-5min, P2000-15min, and P2000-18h. The images in the range of  $1\mu\text{m}^2$  are shown in Figure 9. The surface roughness of the samples is shown in Figure 11 and summarized in Table S3.

The surface morphology of P2000-5s was rougher than that of P1000-5s. In comparison, P3000-5s had a slightly smoother surface. When the films were not immersed in DI water, the film surfaces were slightly smoother than those immersed shortly. Thus, immersion in DI water for short periods of time may slightly degrade the film surface. However, the longer the immersion time in DI water, the smoother the surface became. As a consequence, P2000-18h had the smoothest surface.

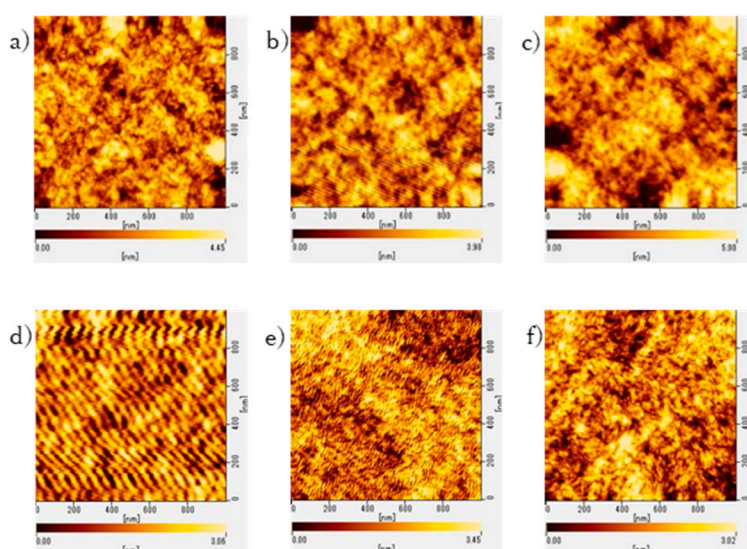


**Figure 9.** AFM images of PEDOT:PSS films: a) P1000-5s, b) P2000-5s, c) P3000-5s, d) P2000-0s, e) P2000-5min, f) P2000-15min, and g) P2000-18h.

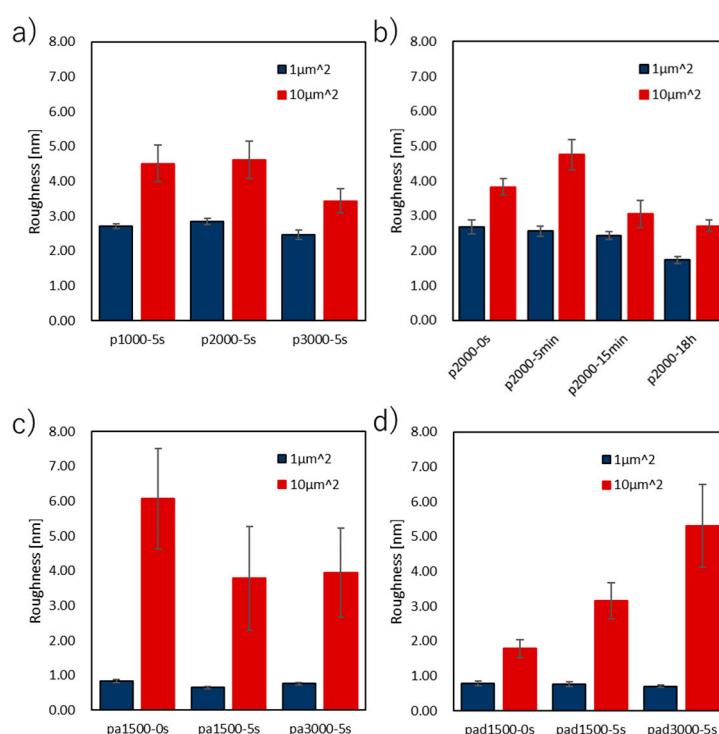
The surface morphology of the PANI films was also observed using AFM. The samples observed were PA1500-5s, PA3000-5s, PA1500-0s, PAD1500-5s, PAD3000-5s, and PAD1500-0s. Images in the  $1\mu\text{m}^2$  range are shown in Figure 10. The surface roughness of the samples is shown in Figure 11 and summarized in Table S4.

Regarding the surface morphology of the PANI films, the surface roughness of both  $1\mu\text{m}^2$  and  $10\mu\text{m}^2$  became smoother by increasing the spin-coating rate. When immersed in DI water, the surface

roughness decreased by nearly 0.2 nm, indicating that the surface became smoother. In PANI:DBSA, comparing PAD1500-5s and PAD3000-5s, the surface roughness at  $10\mu\text{m}^2$  was smoother on PAD1500-5s. However, PAD-3000-5s was smoother at  $1\mu\text{m}^2$ . The sample without DI water rinse had a slightly rougher surface at  $1\mu\text{m}^2$ , but much smoother results in the  $10\mu\text{m}^2$  range. This may be due to the possibility that the samples with DBSA were more prone to mottling of the surface morphology due to washing.



**Figure 10.** AFM images of the PANI and PANI:DBSA films: a) PA1500-5s, b) PA3000-5s, c) PA1500-0s, d) PAD1500-5s, e) PAD3000-5s, and f) PAD1500-0s.



**Figure 11.** Surface roughness (Ra) of the PEDOT:PSS films at (a) various spin-coating rates and (b) various immersion times in DI water and the PANI and PANI:DBSA films at (c) various spin-coating rates and (b) various immersion times in DI water.



#### 4. Discussion

From the above results, the best OECT performance for PEDOT:PSS was obtained at a spin-coating rate of 2000 rpm and immersion in DI water for 18 hours. For PANI, the best performance was obtained by adding DBSA, spin-coating at 3000 rpm, and washing the surface with DI water for a short time of about 5 seconds.

On-resistance and conductivity were higher for PEDOT:PSS, and conductivity was about 16 times higher than that of PANI, partly due to its thinner film. The maximum transconductance was 13 times higher for PEDOT:PSS. These results indicate that PEDOT:PSS considerably outperforms PANI in terms of performance as an OECT. This is thought to be because the presence of PSS considerably improved the oxidation resistance of the PEDOT:PSS film, allowing the formation of a relatively wide flow path even when the films are thin.

However, the uniformity of film thickness and the smoothness of the film surface are superior for PANI. In terms of film thickness, PEDOT:PSS showed a large difference in thickness depending on the location, whereas PANI showed a fairly uniform film thickness at  $1\mu\text{m}^2$ . Considering that PEDOT:PSS required various preparations to fabricate OECTs, PANI is superior in that better morphology films can be easily formed in a shorter time. The surface of the PANI film was relatively easy to scrape, resulting in a large surface roughness value at  $10\mu\text{m}^2$ . In this regard, further surface smoothness and performance improvement can be expected by establishing a uniform cleaning method with DI water.

#### 5. Conclusions

In this study, OECTs were fabricated using PEDOT:PSS and PANI, and their performances were evaluated. Regarding the optimization of fabrication conditions, in the case of PEDOT:PSS, a polymer film with a thickness of 150 nm was obtained by spin-coating at 3000 rpm and immersion in DI water for 18 hours, based on the uniformity inside the film and the smoothness of the surface.

For PANI, the OECT performances and film surface morphology studies revealed that doping with DBSA improves the carrier concentration. Based on the effect of film surface smoothness, it was also found that the optimal conditions for PANI doped with DBSA were a spin-coating rate of 3000 rpm and surface washing with DI water for about 5 seconds, resulting in a polymer film with a thickness of  $0.84\mu\text{m}$ . The conductivity and maximum transconductance tended to increase with the increasing spin-coating rate, and further improvement in values may be expected by increasing the spin-coating rate higher than 3000 rpm. However, the higher oxidation rate and the shrinkage of channels formed by thinning and the associated decrease in current and voltage tolerance had a greater impact, resulting in less stable OECT and less reliable data.

The basic performance of the PEDOT:PSS-based OECT is higher than that of the PANI-based OECT, and this is the reason why there are many PEDOT:PSS-based OECT studies. On the other hand, PANI is superior in terms of the smoothness of the polymer film, and research on biosensors using the PANI-based OECT is expected in the future.

**Supplementary Materials:** The following supporting information can be downloaded at: [www.mdpi.com/xxx/s1](http://www.mdpi.com/xxx/s1), Table S1: OECT characteristics based on PEDOT:PSS; Table S2: OECT characteristics based on PANI; Table S3: Surface roughness data of PEDOT:PSS films; Table S4: Surface roughness data of PANI films.

**Author Contributions:** Conceptualization, T.M.; investigation, R.K.; writing—original draft preparation, R.K.; writing—review and editing, T.M.; funding acquisition, T.M. All authors have read and agreed to the published version of the manuscript.

**Data Availability Statement:** The data presented in this study are available on request from the corresponding author.

**Acknowledgments:** This study was partially supported by the Amano Institute of Technology.

**Conflicts of Interest:** The authors declare no conflict of interest.

## References

1. Naveen, M. H; Gurudatt, N, G: Shim, Y.-B. Applications of conducting polymer composites to electrochemical sensors: A review. *Appl. Mater. Today* **2017**, 9, 419-433. <https://doi.org/10.1016/j.apmt.2017.09.001>
2. Kimpel, J.; Michinobu, T. Conjugated Polymers for Functional Applications: Lifetime and Performance of Polymeric Organic Semiconductors in OFETs. *Polym. Int.* **2021**, 70, 367-373. <https://doi.org/10.1002/pi.6020>
3. Scheiblin, G.; Coppard, R.; Owens, R. M.; Mailley, P.; Malliaras, G. G. Referenceless pH Sensor using Organic Electrochemical Transistors. *Adv. Mater. Technol.* **2017**, 2, 1600141. <https://doi.org/10.1002/admt.201600141>
4. Tang, H.; Yan, F.; Lin, P.; Xu, J.; Chan, H. L. W. Highly Sensitive Glucose Biosensors Based on Organic Electrochemical Transistors Using Platinum Gate Electrodes Modified with Enzyme and Nanomaterials. *Adv. Funct. Mater.* **2011**, 21, 2264-2272. <https://doi.org/10.1002/adfm.201002117>
5. Wustoni, S.; Savva, A.; Sun, R.; Bihar, E.; Inal, S. Enzyme-Free Detection of Glucose with a Hybrid Conductive Gel Electrode. *Adv. Mater. Interfaces* **2019**, 6, 1800928. <https://doi.org/10.1002/admi.201800928>
6. Kenry; Yeo, J. C.; Lim, C. T. Emerging flexible and wearable physical sensing platforms for healthcare and biomedical applications. *Microsyst. Nanoeng.* **2016**, 2, 16043. <https://doi.org/10.1038/micronano.2016.43>
7. Ouyang, J.; Chu, C.-W.; Chen, F.-C.; Xu, Q.; Yang, Y. High-Conductivity Poly(3,4-ethylenedioxythiophene):Poly(styrene sulfonate) Film and Its Application in Polymer Optoelectronic Devices. *Adv. Funct. Mater.* **2005**, 15, 203–208. <https://doi.org/10.1002/adfm.200400016>
8. ElMahmoudy, M.; Inal, S.; Charrier, A.; Uguz, I.; Malliaras, G. G. Tailoring the Electrochemical and Mechanical Properties of PEDOT:PSS Films for Bioelectronics. *Macromol. Mater. Eng.* **2017**, 302, 1600497. <https://doi.org/10.1002/mame.201600497>
9. Amer, K.; Elshaer, A. M.; Anas, M.; Ebrahim, S. Fabrication, characterization, and electrical measurements of gas ammonia sensor based on organic field effect transistor. *J. Mater. Sci.* **2019**, 30, 391–400. <https://doi.org/10.1007/s10854-018-0303-7>
10. Zeglio, E.; Inganäs, O. Active Materials for Organic Electrochemical Transistors. *Adv. Mater.* **2018**, 30, 1800941. <https://doi.org/10.1002/adma.201800941>
11. Nawaz, A.; Liu, Q.; Leong, W. L.; Fairfull-Smith, K. E.; Sonar, P. Organic Electrochemical Transistors for In Vivo Bioelectronics. *Adv. Mater.* **2021**, 33, 2101874. <https://doi.org/10.1002/adma.202101874>
12. Liang, Y.; Offenhausser, A.; Ingebrandt, S.; Mayer, D. PEDOT:PSS-Based Bioelectronic Devices for Recording and Modulation of Electrophysiological and Biochemical Cell Signals. *Adv. Healthcare Mater.* **2021**, 10, 2100061. <https://doi.org/10.1002/adhm.202100061>
13. Rashid, R. B.; Ji, X.; Rivnay, J. Organic electrochemical transistors in bioelectronic circuits. *Biosens. Bioelectron.* **2021**, 190, 113461. <https://doi.org/10.1016/j.bios.2021.113461>
14. Paudel, P. R.; Tropp, J.; Kaphle, V.; Azoulay, J. D.; Lüssem, B. Organic electrochemical transistors – from device models to a targeted design of materials. *J. Mater. Chem. C* **2021**, 9, 9761-9790. <https://doi.org/10.1039/D1TC01601F>
15. Kukhta, N. A.; Marks, A.; Luscombe, C. K. Molecular Design Strategies toward Improvement of Charge Injection and Ionic Conduction in Organic Mixed Ionic-Electronic Conductors for Organic Electrochemical Transistors. *Chem. Rev.* **2022**, 122, 4325-4355. <https://doi.org/10.1021/acs.chemrev.1c00266>
16. Kousseff, C. J.; Halaksa, R.; Parr, Z. S.; Nielsen, C. Mixed Ionic and Electronic Conduction in Small-Molecule Semiconductors. *Chem. Rev.* **2022**, 122, 4397-4419. <https://doi.org/10.1021/acs.chemrev.1c00314>
17. Marks, A.; Griggs, S.; Gasparini, N.; Moser, M. Organic Electrochemical Transistors: An Emerging Technology for Biosensing. *Adv. Mater. Interfaces* **2022**, 9, 2102039. <https://doi.org/10.1002/admi.202102039>
18. He, Y.; Kukhta, N. A.; Marks, A.; Luscombe, C. K. The effect of side chain engineering on conjugated polymers in organic electrochemical transistors for bioelectronic applications. *J. Mater. Chem. C* **2022**, 10, 2314-2332. <https://doi.org/10.1039/D1TC05229B>
19. Li, P.; Lei, T. Molecular design strategies for high-performance organic electrochemical transistors. *J. Polym. Sci.* **2022**, 60, 366-392. <https://doi.org/10.1002/pol.20210503>
20. Fang, B.; Yan, J.; Chang, D.; Piao, J.; Ma, K. M.; Gu, Q.; Gao, P.; Chai, Y.; Tao, X. Scalable production of ultrafine polyaniline fibres for tactile organic electrochemical transistors. *Nat. Commun.* **2022**, 13, 2101. <https://doi.org/10.1038/s41467-022-29773-9>



21. Mello, H. J. N. P. D.; Faleiros, M. C.; Mulato, M. *Electrochem. Sci. Adv.* **2022**, *2*, e2100176. <https://doi.org/10.1002/elsa.202100176>
22. Long, Y.; Chen, Z.; Wang, N.; Li, J.; Wang, M. Electronic transport in PANI-CSA/PANI-DBSA polyblends. *Physica B: Condensed Matter*. **2004**, *344*, 82-87. <https://doi.org/10.1016/j.physb.2003.09.245>

**Disclaimer/Publisher's Note:** The statements, opinions and data contained in all publications are solely those of the individual author(s) and contributor(s) and not of MDPI and/or the editor(s). MDPI and/or the editor(s) disclaim responsibility for any injury to people or property resulting from any ideas, methods, instructions or products referred to in the content.