
Title Biological Effects of “Inflammageing” on Human Oral Cells: Insights into a Potential Confounder of Age-Related Diseases

Elli Alexakou , [Athina Bakopoulou](#) ^{*} , Danae A Apatzidou , [Aristeidis Kritis](#) , [Andigoni Malousi](#) ,
[Vassiliki Anastassiadou](#)

Posted Date: 20 November 2023

doi: 10.20944/preprints202311.1256.v1

Keywords: inflammageing; senescence; pro-inflammatory stimulus; Senescence Associated Secretory Phenotype (SASP)



Preprints.org is a free multidiscipline platform providing preprint service that is dedicated to making early versions of research outputs permanently available and citable. Preprints posted at Preprints.org appear in Web of Science, Crossref, Google Scholar, Scilit, Europe PMC.

Copyright: This is an open access article distributed under the Creative Commons Attribution License which permits unrestricted use, distribution, and reproduction in any medium, provided the original work is properly cited.

Article

Title Biological Effects of “Inflammageing” on Human Oral Cells: Insights into a Potential Confounder of Age-Related Diseases

Elli Alexakou ¹, Athina Bakopoulou ^{1,*}, Danae A. Apatzidou ², Aristeidis Kritis ^{3,4}, Andigoni Malousi ⁵ and Vassiliki Anastassiadou ¹

¹ Department of Prosthodontics, School of Dentistry, Faculty of Health Sciences, Aristotle University of Thessaloniki (A.U.TH.), Greece-54124.

² Department of Preventive Dentistry, Periodontology & Implant Biology, School of Dentistry, Faculty of Health Sciences, Aristotle University of Thessaloniki (A.U.TH.), Greece-54124.

³ Department of Physiology, School of Medicine, Faculty of Health Sciences, Aristotle University of Thessaloniki (A.U.TH.), Greece-54124.

⁴ Regenerative Medicine Center, Basic and Translational Research Unit (BTRU) of Special Unit for Biomedical Research and Education (BRESU), Faculty of Health Sciences, School of Medicine, Aristotle University of Thessaloniki, Greece-54124.

⁵ Department of Biological Chemistry, School of Medicine, Faculty of Health Sciences, Aristotle University of Thessaloniki (A.U.TH.), Greece-54124.

* Correspondence: e-mail@e-mail.com; Tel.: Prof. Athina Bakopoulou, abakopoulou@dent.auth.gr; Tel.: + 30 2310 999540

Abstract: Objectives: The term “inflammageing” describes the process of inflammation-induced aging that leads living cells to a state of permanent cell cycle arrest due to chronic antigenic irritation. This in vitro study aimed to shed light on the mechanisms of “inflammageing” on human oral cells. Methods: Primary cultures of human gingival fibroblasts (hGFs) were exposed to variable pro-inflammatory stimuli, including lipopolysaccharide (LPS), Tumor Necrosis Factor-alpha (TNFα), and gingival crevicular fluid (GCF) collected from active periodontal pockets of systemically healthy patients. Inflammageing was studied through two experimental models, employing either late-passage (“aged”) cells (p.10) that were exposed to the pro-inflammatory stimuli or early-passage (“young”) cells (p.1) continuously exposed during a period of several passages (up to p.10) to the above-mentioned stimuli. Cells were evaluated for the expression of beta-galactosidase activity (histochemical staining), senescence-associated genes (qPCR analysis), and biomarkers related to a Senescence Associated Secretory Phenotype (SASP), through proteome profile analysis and bioinformatics. Results: A significant increase ($p < 0.05$) of beta-galactosidase-positive cells was observed after exposure to each pro-inflammatory stimulus. The senescence-associated gene expression included upregulation for CCND1 and downregulation for SUSD6, and STAG1, a profile typical for cellular senescence. Overall, pro-inflammatory priming of late-passage cells caused more pronounced effects in terms of senescence, than long-term exposure of early-passage cells to these stimuli. Proteomic analysis showed induction of SASP, evidenced by upregulation of several pro-inflammatory proteins (IL-6, IL-10, IL-16, IP-10, MCP-1, MCP-2, M-CSF, MIP-1a, MIP-1b, TNFβ, sTNF-RI, sTNF-RII, TIMP-2) implicated in cellular aging and immune responses. The least potent impact on the induction of SASP was provoked by LPS and the most pronounced by GCF. Conclusion: This study demonstrates that long-term exposure of hGFs to various pro-inflammatory signals induced or accelerated cellular senescence with the most pronounced impact noted for the late-passage cells. The outcome of this analyses provides insights into oral chronic inflammation, as a potential confounder of age-related diseases.

Keywords: inflammageing; senescence; pro-inflammatory stimulus; Senescence Associated Secretory Phenotype (SASP)

1. Introduction

The term "Inflammageing" describes the process of inflammation-induced aging that leads living cells to a state of permanent cell cycle arrest due to chronic antigenic irritation. It was first reported by Franceschi et al. in 2000 and was very early associated with age-related diseases. Inflammageing has attracted the interest of the scientific community early on, resulting in the development of various concepts that try to explain and approach the biological process that takes place [1]. In essence, inflammageing is initiated in a microenvironment with elevated levels of pro-inflammatory and reduced levels of anti-inflammatory cytokines, which leads to a low-grade, asymptomatic chronic and systemic inflammatory response of the host. The above overactive reaction is maintained for an extended period after the removal of the initial stimulus [2–4]. During this process a series of complex responsive events take place. It is essentially an interaction between the cells and elements of the microenvironment, aiming to adjust the balance between physiological and pathological signaling networks. Inflammageing represents a non-resolving state of the inflammatory response of the host, where the presence of an insistent and low-intensity stimulation and long-term responses in target tissues, leads to a failure of the immune system to restore the equilibrium between pro-resolution and pro-inflammatory mediators [1,5].

In the field of Geroscience, inflammation has been considered as one of the seven evolutionarily conserved mechanistic pillars of ageing that are common in age-related diseases. In the oral cavity, it has been confirmed that persistent local inflammation affects and even triggers the onset of systemic diseases, such as diabetes, cardiovascular disease, and dementia, and has a negative impact on nutrition, well-being, and overall quality of life (QoL) [6–8]. Oral pathogenic bacteria associated with periodontitis, caries, and other metabolites of the oral microbiome can enter the systemic circulation through the periodontal blood and bloodstream and consequently affect the systemic health of the human body [9–11]. Besides, inflammageing is the long-term result of the chronic physiological stimulation of the innate immune system, which can become damaging during ageing, a period of life largely unpredicted by evolution [12].

Ageing can be characterized as a progressive physiological change in an organism leading to a decline of several biological functions, cellular senescence, and finally loss of the ability of the organism for adaptation and homeostasis [13,14]. New findings suggest that ageing is a modifiable risk factor, and, in this respect, it may be feasible to delay age-related diseases by modulating fundamental aging mechanisms. One of these mechanisms is cellular senescence, which refers to the biological ageing of the living cells, that may further initiate Inflammageing. The increasing load of senescent cells results in the release of soluble agents, like cytokines, chemokines, growth factors, and enzymes proteases, into the surrounding microenvironment, a phenomenon known as "Senescence-Associated Secretory Phenotype" (SASP), which eventually contributes to tissue dysfunction. SASP-mediated micro-environmental stimuli may induce a "pro-inflammatory licensing" to the neighboring healthy cells, initiating a "vicious cycle" and leading to a further increase of inflammation and dysfunction. The proteins associated with the SASP, such as TNF α , IL-6, monocyte chemoattractant proteins (MMPs), proteins-1 (MCP-1), and IGF-binding proteins (IGFBPs), grow in multiple chronologically aged tissues and induce initiation and evolution of aseptic inflammation [15,16]. Conversely, a local, time limited SASP may be important for resolving tissue damage, at least in younger adults, as it can alert adjacent cells to potential risk and promote the immune clearance of damaged cells [17,18].

Inflammageing has been barely studied in conjunction with conditions prevailing in the oral cavity and its impact on oral cells and tissues. Based on the above, the present study aimed to explore the effects of various pro-inflammatory signals on the induction and/or acceleration of cellular senescence and the acquirement of a SASP phenotype by human oral cells. The goal was to identify the cellular senescence-related biomarkers that drive Inflammageing in the oral cavity and can therefore be used as indicators of an increase in vulnerability toward systemic health effects. The null hypotheses of the study were that exposure of healthy human gingival oral cells to pro-inflammatory stimuli does not affect the progress of cellular senescence and does not promote acquirement of SASP.

2. Results

2.1. Senescence-related beta-galactosidase activity

The SA-beta-gal activity in HGF cultures was evaluated either in late-passage cells after short-term exposure to pro-inflammatory signals (G1) or after prolonged exposure of early-passage cells from p.2 to p.10 to the above-mentioned signals (G2) (Figure 1). In the G1 case, a significant increase of SA-beta-gal positive cells (** $p < 0.01$) was observed after exposure to all pro-inflammatory signals, except the lowest concentration ethanol (EtOH-1 group = 100 mM). In the G2 case, the highest number of SA-beta-gal positive cells was observed at middle passages for the LPS- (** $p < 0.01$) and GCF (** $p < 0.01$) the least number for the TNFa exposed cells (** $p < 0.01$) and the same trend was preserved also for late passage cells (** $p < 0.01$).

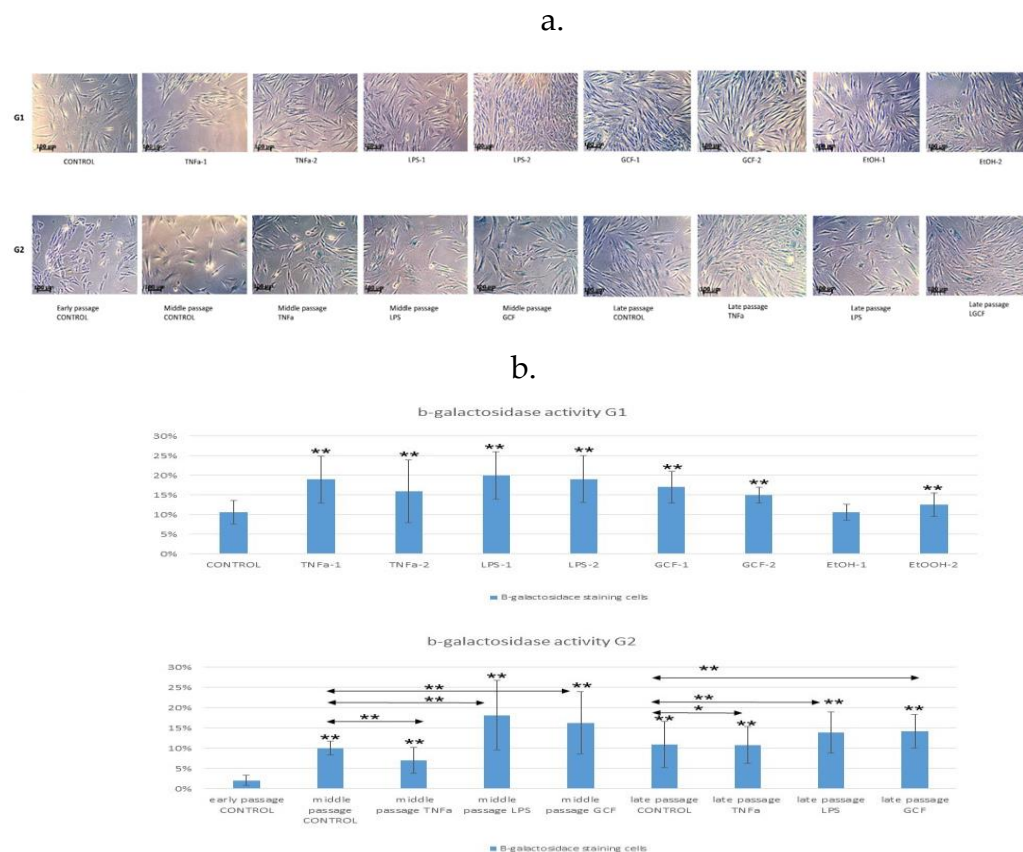


Figure 1. Impact of long-term and short-term exposure of HGFs to several pro-inflammatory signals (TNFa, LPS, GCF) on β -galactosidase activity. a. Optical microscopy photographs of HGFs, exposed short-term and long-term to pro-inflammatory signals (scale bars: 100 μ m). b. Percentage of SA- β -gal-positive HGFs cells exposed short-term at late passage (G1) and long-term (from early to late passages, G2) to pro-inflammatory signals. Values are mean (\pm SD) of HGFs (experiments repeated three times in duplicates). Asterisks indicate statistically significant differences (* $p < 0.05$; ** $p < 0.01$) between control group (G1) vs. all the signals groups and early control group (G2,) vs. middle and late passages for each signal separately. The horizontal double arrows indicate statistically significant differences between HGFs expanded in the same passage group. Statistical analyses were performed by two-way ANOVA followed by Tukey's post-hoc tests.

2.2. Senescence-related gene expression patterns

Figure 2 depicts the results of senescence-related gene expression for cells exposed to various pro-inflammatory signals. In specific, gene expression analysis by real-time PCR after short-term exposure of late passage cells to pro-inflammatory signals (G1) showed statistically significant downregulation of CCND1 in the TNFa group (0.5 ± 0.0 -fold compared to control for both concentrations (TNFa-1 and TNFa-2, ** $p < 0.01$), and in the LPS group (0.7 ± 0.1 -fold compared to

control for both concentrations (LPS-1 and LPS-2, $**p < 0.01$) and statistically significant upregulation in the EtOH-2 group (2.0 ± 0.1 -fold, $**p < 0.01$). In all other groups, no statistical difference was observed.

SUSD6 and STAG1 showed a trend for downregulation after exposure to increasing concentrations of the pro-inflammatory factors. Regarding SUSD6, a statistically significant decrease was observed in the LPS-2 (0.5 ± 0.0 -fold, $**p < 0.01$), GCF-2 (0.5 ± 0.0 -fold, $**p < 0.01$) and EtOH-2 (0.4 ± 0.0 -fold, $**p < 0.01$) groups, while a statistically significant increase was observed in the TNFa-2 group (1.3 ± 0.2 -fold, $**p < 0.01$). Expression of STAG1 showed a downregulation in the TNFa-2 (0.6 ± 0.1 -fold, $*p < 0.05$) and GCF-2 (0.6 ± 0.3 -fold, $*p < 0.05$) groups.

Senescence-related gene expression patterns after long-term exposure of early passage cells to pro-inflammatory signals (G2) showed a statistically significant ($p < 0.01$) downregulation of CCND1 expression in all groups including control in middle passages (approx. 0.3 ± 0.1 -fold for all groups) compared to the early passage control group, followed by an increase in gene expression at late passage groups, but without any differences within the same passage group.

SUSD6 expression levels showed a general reduction between the different stimuli groups at every passage. A statistically significant downregulation of SUSD6 expression was observed in the middle passage control group compared to the early passage control group (2.0 ± 0.4 -fold, $**p < 0.01$), while, significant downregulation compared to the respective middle passage control was observed for the TNFa group (1.1 ± 0.2 -fold, $**p < 0.01$) and the GCF group (1.3 ± 0.5 -fold, $**p < 0.01$). Cells at late passage showed an overall downregulation of SUSD6 expression but without any differences within the same late passage between the experimental groups.

STAG1 gene expression showed a decline in the G2 scenario. Statistically significant downregulation appeared in the TNFa group (0.5 ± 0.1 -fold, $**p < 0.01$) and GCF group (0.6 ± 0.1 -fold, $*p < 0.05$) at middle passages and in all groups at late passages compared to the early passage control group. No differences were observed between groups within the same passage.

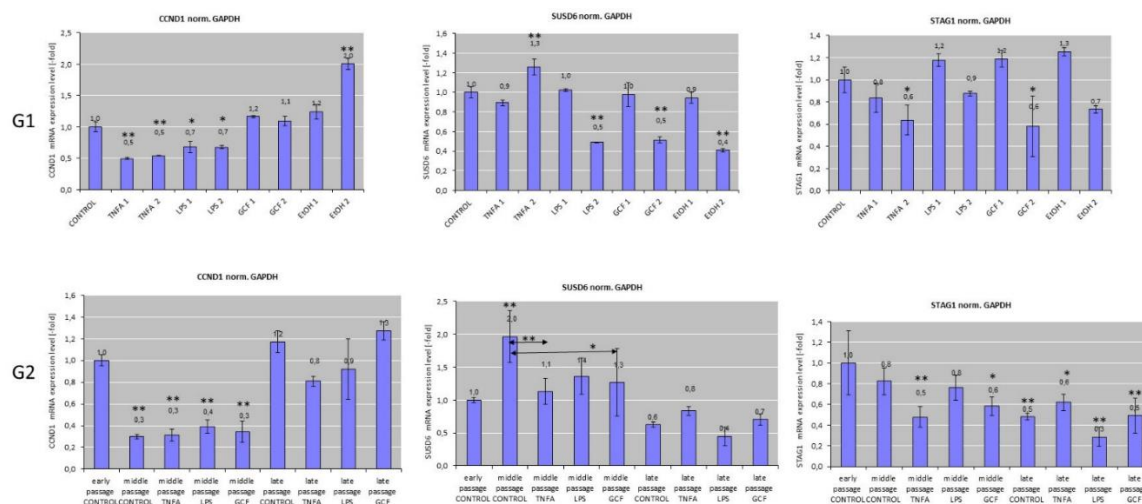


Figure 2. Real-time polymerase chain reaction (PCR) analysis of the expression of senescence-related genes, including CCND1, SUSD6, STAG1 in HGFs cultures exposed to several pro-inflammatory signals, including LPS, TNFa, and GCF. Human Gingival Fibroblast (HGF) without treatment were used as controls and GAPDH as housekeeping gene for this assay. EtOH was used at G1 set up as positive control group. Real-time PCR values are means \pm standard deviations of three independent set ups in duplicates ($*p < 0.05$, $**p < 0.01$ compared with control untreated cultures). The double arrows (G2) indicate statistically significant differences between groups expanded in the same passage.

2.3. SASP-related marker expression analysis

The semi-quantitative analysis, which was performed by proteome antibody-based arrays (Figure 3), showed that the abundance of several inflammatory molecules presented statistically

significant differences among the experimental groups. Semi-quantitative analysis of the dot-blots among the experimental groups revealed statistically significant differences for 21 proteins in the GCF group, 4 proteins in the LPS group, and 18 proteins at the TNFa group compared all to control groups (Figure 4). Among the significantly modulated cytokines, several pro-inflammatory proteins (e.g., IL-6, IL-10, IL-16, IP-10, MCP-1, MCP-2, M-CSF, MIP-1a, MIP-1b, TNFb, sTNF-RI, sTNF-RII, TIMP-2) implicated in cellular aging and immune responses were significantly up-regulated in all groups. Overall, the smallest impact on SASP was incited by LPS and the most explicit by GCF.

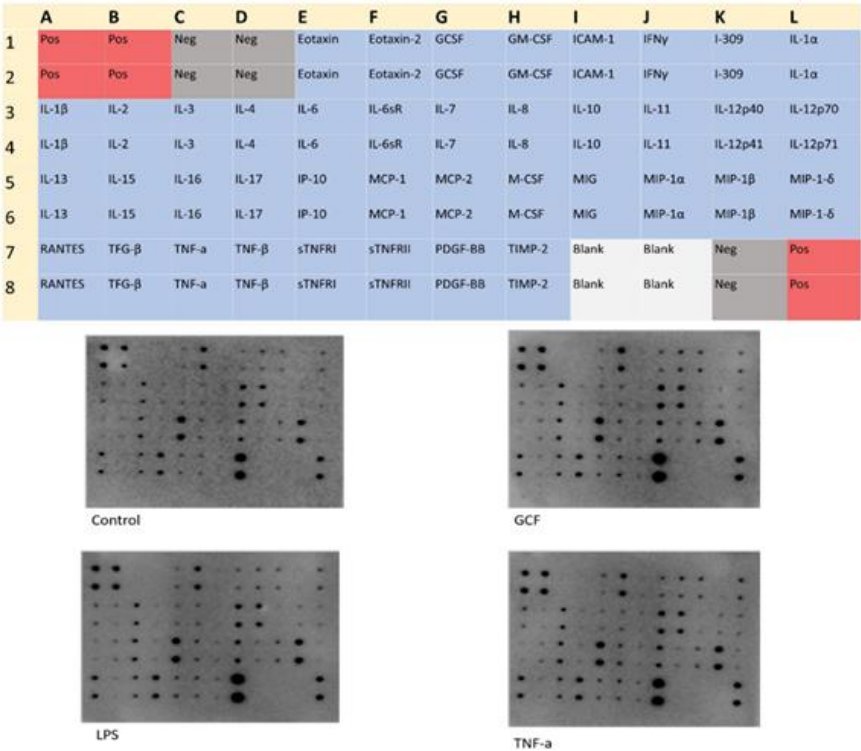


Figure 3. Proteome antibody-based arrays comparatively analyzing the expression of several SASP-related proteins in protein lysates of cells exposed to several pro-inflammatory signals, including LPS, GCF and TNFa, until middle passage compared to the control group.

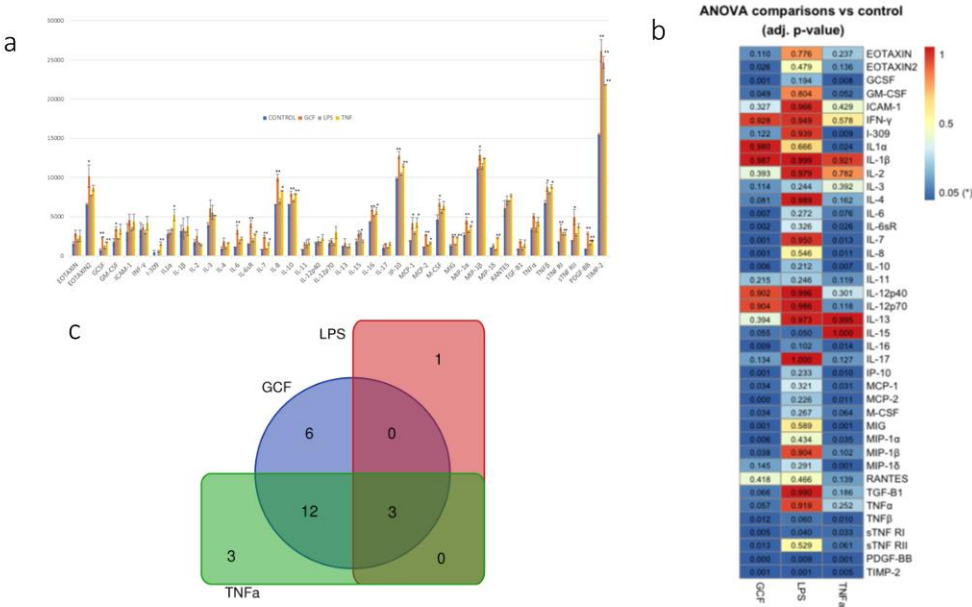


Figure 4. a. Semi-quantitative analysis of SASP-marker expression by Image J. After normalization to Positive Control signal intensities, the comparison of the relative expression levels, analyte-by-analyte, among the groups followed. By comparing these signal intensities, the relative differences in cytokine expression were determined in each sample. b. Heat-map of the ANOVA adjusted p-values for pairwise comparisons between GCF, LPS and TNFa vs, control, c. Number of statistically significant proteins (adj. p-value ≤ 0.05) overlapping in GCF, LPS and TNFa experiments.

Gene co-expression analysis (Figure 5), shows the level of confidence that two proteins are functionally associated, given the overall gene expression data in human. Based on the RNA expressing levels in humans, the higher co-expression score was observed for the pairs CCL3-CCL4 (score: 0.974) for the GCF- and CXCL9 – CXCL10 (score: 0.848) for both GCF- and TNFa groups.

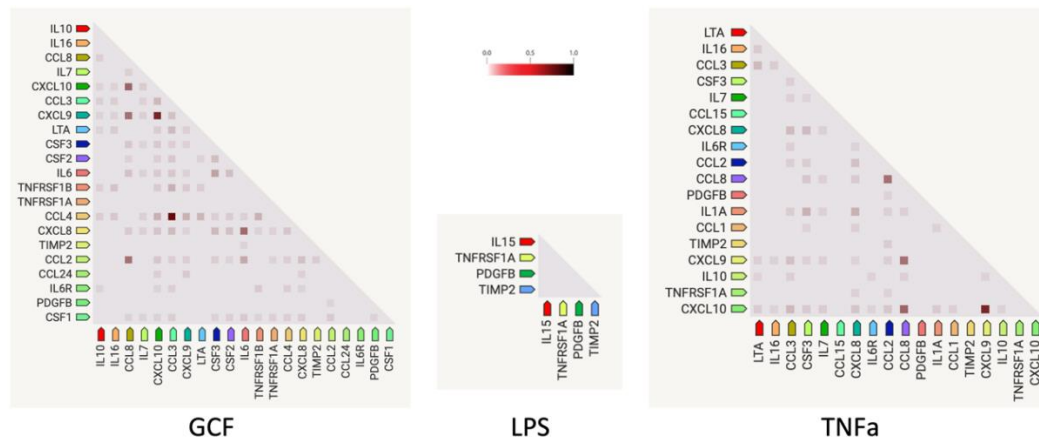


Figure 5. Gene co-expression analysis shows the level of confidence that two proteins are functionally associated, given the overall gene expression data in human. The color intensity in the squares represents the level of association of the expression data, ranging between 0 (no association confidence) and 1 (high association confidence).

Besides, the protein–protein interaction network analysis was constructed using the STRING-DB database. The diagrams in Figure 6, show the connection/interaction between the proteins that were found statistically significant in each stimulus. The line color indicates the type of interaction evidence.

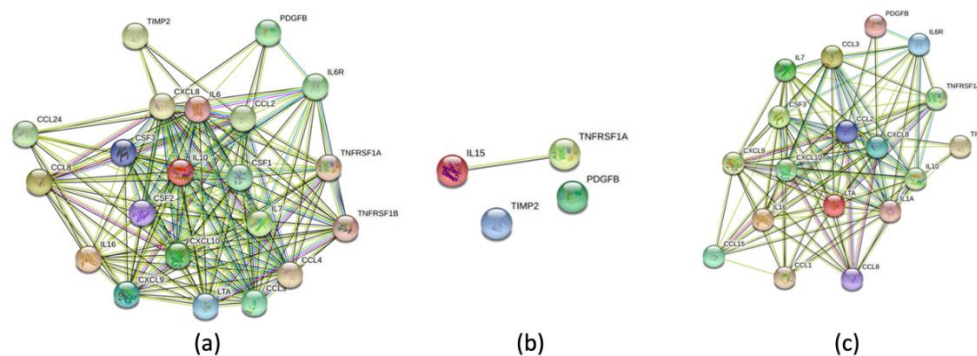


Figure 6. Interaction network of the statistically significant proteins (adj. p-value ≤ 0.05) for a) GCF, b) LPS, and c) TNFa.

Finally, Gene Ontology (GO) enrichment analysis was used to identify the biological roles and functions of specific genes and their products. Differentially expressed proteins were annotated based on the terms of the biological process, molecular function, and cellular component GO categories (Figure 7). In terms of biological processes, most of the protein class, 23 the number, is associated with inflammatory response and 4 of them are associated with the aging process. For the

cellular component, most proteins were distributed in the extracellular space and region (38 and 34 the number respectively). The proteins of molecular function, 23 in number, were mainly involved in cytokine activity.

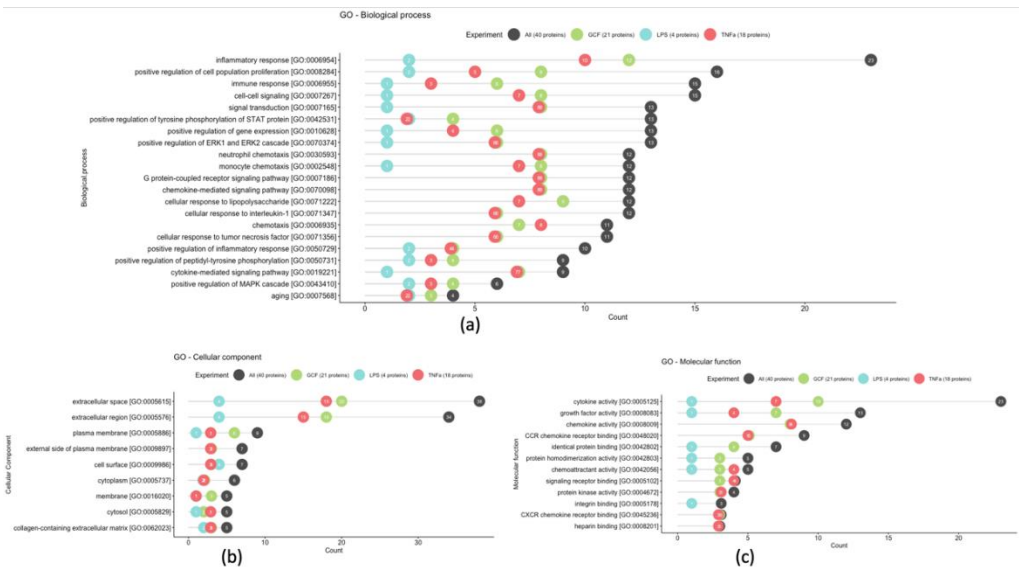


Figure 7. Most frequent gene ontology terms among statistically significant GCF, LPS and TNFα proteins based on the biological process (a), cellular component (b), and molecular function (c) GO terms.

3. Discussion

The current study shed light into how the induction of mild, pro-inflammatory signals may affect the acceleration of senescence and the development of SASP in human oral cells. Based on the results of the experimental processes both null hypotheses are rejected.

Various pro-inflammatory signals (TNFα, LPS, and GCF) known to predominate in inflammatory conditions in the oral cavity, including caries and periodontal disease have been experimentally evaluated in terms of their potential to induce cellular senescence and to provoke a microenvironment suitable for the induction of SASP. In particular, tumor necrosis factor-α (TNFα) is a pleiotropic cytokine, characterized as a main regulator of inflammatory responses, while its presence in high amounts is associated with the pathogenesis of several inflammatory diseases, like Crohn disease and rheumatoid arthritis [19,20]. Lipopolysaccharide (LPS) is a representative component of the membrane of gram-negative oral bacteria and has been studied for its ability to induce a pro-inflammatory phenotype in various somatic cell types, such as osteocytes and cells derived from human gingival fibroblasts [21,22]. Gingival crevice fluid (GCF) is an inflammatory exudate that has been collected from deep periodontal pockets of systemically healthy adults suffering from periodontitis [23]. This fluid mainly consists of serum, tissue-collapsed products, inflammatory mediators, and antibodies that fight oral bacterial infections [24]. EtOH, that has been used in the present study as a positive control for induction of cellular senescence, is an ingredient of many products that come into contact with the oral mucosa, such as drugs and mouthwashes. This has led many researchers dealing with its effect on oral cells, to conclude that while small concentrations may be beneficial for healing, large concentrations for a long period of exposure may be toxic, affecting cell proliferation, morphology, and viability [25–27]. The exposure concentrations of the pro-inflammatory signals mentioned above were selected in the present study based on their use in previous experiments reported in the literature, as being effective in inducing a pro-inflammatory environment without causing cell toxicity [22,27–29].

The evaluation of cellular senescence was based on the quantification of beta-galactosidase positive cells, a commonly used experimental procedure for assessing aging, as well as on real-time PCR analysis of senescence-related genes. Even though increased numbers of SA-β-gal-positive cells

were observed by the progression of passages, the number was statistically higher for the cells exposed to the pro-inflammatory signals. The increased number of SA-gal positive cells with passaging was to be expected, as the gradual decline of cell division in growing cultures is a known process for all human cell populations unless the cells are immortalized [30,31]. Nevertheless, subsequent discoveries have shown that senescence can also be provoked as a cellular reaction to DNA damage. This response is triggered by external influences on cells, like oxidizing agents, oncogenic signals, tumorigenic factors, such as transforming growth factor- β (TGF- β) and TNF α , or bacterial infections and accumulations, like LPS induction [32].

Regarding the effect of TNF α and LPS on cellular senescence, this has been confirmed by previous studies in various cell lines, like mesenchymal stem cells, osteocytes, and human gingival fibroblasts [33–36]. The results of the present study showed that in both long-term and short-term exposure there is an increase in the proportion of positive cells for SA β -gal. Also, the number of senescent cells at the long-term exposure conditions was found to show a downward trend in the latter passages, since various mechanisms that affect the proliferation and cycling of the cells take place. Research has shown that the application of substances, like LPS or TNF α , leads to a decrease in telomere length [37]. It also results in an increase in the expression of molecules associated with cell cycle arrest (p16/INK4, p21/WAF-1, and p53) and inflammatory molecules (ICAM-1, IL-1 β , IL-6, IL-8, MCP-1, MMP12, MMP13) [38]. Additionally, genes linked to inflammation (TNF α , IL-6, MCP-1) are upregulated, and signaling molecules related to SASP, such as C/EBP β , p38 MAPK, and NF- κ B p65, become activated. This results in increased expression of molecules associated with cell cycle arrest (p16/INK4, p21/WAF-1, and p53) and inflammatory responses (production of IL-6, TNF- α , and CXCL1) [39]. Furthermore, there is an elevation in the production of reactive oxygen species (ROS) [40,41]. Depending on the specific cell type and culture conditions, these effects lead to reduced proliferation rates and a shift in the culture composition toward senescent cells [42,43]. What is more, SA- β -gal activity, although indicated, is neither causal nor specific for aging and is mainly associated with a non-proliferative state of the cells [44,45]. For this reason, it should be interpreted in conjunction with other biomarkers, for example, secretion of bio-active factors related to SASP or real-time PCR analysis of the expression of senescence-related genes [46].

Among several senescence-specific genes reported in the literature, Cyclin D1 (*CCND1*), *SUSD6*, and *STAG1* were selected. Cyclin D1 is a regulatory subunit of CDK4 or CDK6, whose activity is required for the G1/S transition. *SUSD6* is involved in cell death and cellular response to DNA damage stimulus; while *STAG1* a component of the cohesin complex, that is required for the cohesion of sister chromatids after DNA replication [47]. The above-mentioned genes are directly or indirectly associated with cellular functions implicated in the progression of senescence, such as cell proliferation, DNA replication, growth, differentiation, glucose transportation, or cell death. Besides, these genes are specific for senescence and not for other conditions, such as cell quiescence or cell cycle arrest. Gene expression in senescent cells is dynamic and the transcriptome of senescent cells is highly heterogeneous and associated with the senescence induction conditions (e.g., replicative senescence, oncogene-induced senescence, ionizing radiation-induced senescence, oxidative stress etc.), as well as the cell type (e.g., fibroblasts, keratinocytes, melanocytes) [48,49]. Many studies that focused on cellular senescence, report gene regulation 7 to 10 days after the application of various senescence inducers (e.g., replicative senescence, TNF α -induced senescence). However, this period may not be sufficient or not indicative for all cell types, such as in fibroblasts, which have shown a statistically significant alteration in senescence-related gene expression after 10 days of exposure [41,50].

Based on the above, the present study performed not only short-term exposure of late passage gingival fibroblasts to pro-inflammatory signals, but also a long-term exposure of these cells from early up to late passage to these stimuli. The latter is recapitulating the continuous exposure of the oral cavity to such stimuli even in young patients suffering chronic inflammatory oral diseases, such as caries or periodontal disease (e.g. gingivitis or juvenile periodontitis). The importance of extending the period of study in the expression of senescence-specific genes in oral gingival cells lies in the fact that they show various significant ups and downs in expression throughout the evaluation period.

For example, while they may initially show an upregulation in expression until the middle passages, this may change reaching the late passages where a downregulation of expression is observed, or vice versa [48,49,51,52]. Noteworthy, the increase of the cycling D1 has been directly related with senescence. An increase in Cyclin expression, in combination with the increase in the period of the signals exposure, is indicative of a gradual decrease in cell proliferation and cycling [53,54]. In addition, research that has been done on the expression of *SUSD6* gene, reports that its overexpression represses the progression of the cell cycle at G2/M phase and causes a decrease in the expression of cyclin [55,56]. This opposite trend in expression was also evident in the current experiment in the long-term exposure, where in the middle passages an increase of *CCND1* was observed with a decrease of *SUSD6*, while in the later passages, the opposite trend was observed. Thus, it becomes apparent that a more senescence profile of the cultures prevails over time, since the most robust cells manage to survive.

An additional method used in the present study to correlate the existence of inflammation with aging was the proteomic analysis. This was carried out using antibody microarray, a technique that is widely used in biomedical research due to several advantages over other commonly used techniques, such as enzyme-linked immunosorbent assays (ELISA) and Western blotting. The use of antibody microarrays is a sensitive technique, which requires small sample volumes, easy and friendly experimental procedures and it takes less than 24 hours to complete the process and capture the results [57].

Elevated levels of pro-inflammatory mediators, such as IL-6, IL-10, IL-16, IP-10, MCP-1, MCP-2, M-CSF, MIP-1a, MIP-1b, TNFb, sTNF-RI, sTNF-RII, TIMP-2 were observed in all experimental groups with most pronounced differences in cells exposed for long term to GCF. The latter could be expected, as this pro-inflammatory cocktail constitutes a complex mixture of numerous inflammatory elements, cytokines, metabolic and bacterial products, as already reported in many studies in the past and also verified by the analysis of the GCF used in the present study, that contained significant amounts of IL-10, BMP-7, TNFa, RANKL, and OPG. Based on this, it is considered a robust exposure factor compared to TNFa and LPS alone [23,58,59].

Regarding the GO enrichment analysis and the biological processes involved, the statistically overexpressed proteins were found to be associated with inflammatory and immune responses, as well as with the aging process. Specifically, the increased expression of certain proteins, such as the pro-inflammatory IL-6 that was observed in the present investigation, have been associated with the aging process and appears to be related to the frailty of the elderly, geriatric syndromes and chronic systemic diseases [60]. Also, the increased serum level of the anti-inflammatory IL-10 has been detected in older people and is associated with the increase of IL-6 and the effort of the immune human system to regulate the expression of the latter [61]. Remarkable is that the expression of these proteins must be evaluated cooperatively to correlate their dysfunction with aging [62].

Regarding the monocyte chemoattractant proteins MCP-1 and MCP-2, these are members of the C-C chemokine family and a potent chemotactic factor for monocytes. MCP-2, which shares more than 60% sequence homology with MCP-1 and MCP-3 and about 30% homology with macrophage inflammatory protein (MIP)-1alpha, regulates the activation of normal T cell expressed (RANTES), and MIP-1beta [63]. The upregulation of these proteins has been linked to the frailty of older people and morbidities associated with old age. Meanwhile, as reported by *Matthew J. Yousefzadeh et al*, in a paper on genetic and pharmacologic interventions, anti-aging treatments were aimed at reducing MCP-1 serum levels, a fact that proves the important role of this protein in the aging process [64]. The clinical impact, regarding these indications, is that monocyte chemoattractant proteins can be used as indicators of the biological age of the human organism and their regulation can be a target of therapeutic mediation for diseases related to aging, like Alzheimer's disease, rheumatoid arthritis, and diabetes [65–68].

According to gene co-expression analysis that shows the level of confidence that two proteins are functionally associated based on the RNA expressing levels in humans, the higher co-expression score was found in the present study for the pairs CCL3-CCL4 (score: 0.974) in the GCF group and CXCL9 – CXCL10 (score: 0.848) in both the GCF and TNFa groups. C-C motif chemokine 3 (CCL3)

and C-C motif chemokine 4 (CCL4) are monokines with inflammatory and chemokinetic properties belonging to the intercrine beta (chemokine CC) family. Both CCL3 and CCL4 bind CCR5 (CC motif chemokine receptor 5). C-X-C motif chemokine 9 (CXCL9) is a cytokine that affects the growth, movement, or activation state of cells that participate in immune and inflammatory responses. C-X-C motif chemokine 10 (CXCL10) is chemotactic for monocytes and T-lymphocytes. Both belong to the intercrine alpha (chemokine CxC) family and bind to CXCR3. The above-mentioned chemotactic cytokines form a diverse group of polypeptides with various functions [69]. These functions encompass drawing immune cells to infection and inflammation sites and promoting cell growth. Consequently, they act as agents against microbes and are crucial in the body's defense against pathogens. Nevertheless, their capacity to attract white blood cells and enhance or extend the inflammatory reaction could significantly impact the development of oral conditions like chronic periodontitis, which often leads to widespread tissue damage. Cytokines, play a crucial role in nearly every phase of periodontal disease development [70]. These substances can even be found in non-diseased areas. Beyond their function in guiding immune cells to infection sites, they also govern processes like the formation of new blood vessels, cell growth, programmed cell death, and the migration of tumor cells. Furthermore, it is becoming more evident that persistent inflammation plays a pivotal role in the advancement of oral tumors. Overall, cytokines are directly related to chronic inflammation in the oral cavity and the enrichment of these factors in this investigation confirms the acquirement of a SASP profile [71–73].

In conclusion, the experimental set-up employed in the present study aimed to recapitulate young and aged oral tissues and to assess the impact of a panel of pro-inflammatory signals commonly present in the oral environment on the induction of cellular senescence and the initiation of the inflammation process. The results show that indeed both at the genetic and at the proteomic level a chronic inflammation can accelerate the cellular senescence process, especially at long-term exposure conditions. This implies that Inflammageing in the oral cavity can be associated with diseases that may spread systematically, so actions aimed at eliminating chronic inflammation in the oral cavity are deemed necessary. In the future, biomarkers that take part in the process of Inflammageing and emerged through this research (e.g. SASP profile), could serve as indicators to assess the existence of oral pathogenesis due to inflammation and lead to preventive measures against premature cell senescence that might accelerate ageing.

4. Materials and Methods

Establishment of Human Gingival Fibroblasts (HGFs) cultures

Human Gingival Fibroblast (HGF) primary cell cultures were established from gingival biopsies of three young healthy donors (20-24 years old) obtained during routine third molar extraction. The study was approved by the ethical committee of the Institutional Review Board (11/01.07.2020).

HGF cultures were established using enzymatic dissociation, as previously published [74]. Briefly, the cells were initially expanded in 25-cm² flask (p.0) in Dulbecco's modified Eagle's medium (DMEM, Invitrogen, Carlsbad, CA) (Life Technologies, Thermo Fisher Scientific, Paisley, UK), supplemented with 10% fetal bovine serum- FBS (Life Technologies), 100 units/mL of penicillin, 100 mg/mL of streptomycin and 0.25 mg/mL of amphotericin-B (all from Life Technologies) (= expansion medium) (CCM), and incubated at 37 °C in 5% CO₂. Medium change was performed every 2 days. After reaching 70–80% confluency, cells were detached with a solution of 0.25% trypsin and 1 mM EDTA for 4–5 min and further subcultured at in 75-cm² flasks (p.1).

Cell cultures were divided into two different experimental groups (G) according to the cell passage and the exposure period (short-term or long-term) to specific pro-inflammatory signals. The latter included exposure to one of the following: 1. human recombinant tumor necrosis factor alpha, TNFa (expressed in *E. coli*, Sigma-Aldrich, Darmstadt, Germany), 2. lipopolysaccharide, LPS (expressed in *E.coli*, Sigma-Aldrich), and 3. gingival crevice fluid, GCF, collected from deep inflammatory periodontal pockets of tree systemically healthy adults. The GCF was characterized in terms of pro-inflammatory protein content by a DuoSet® Human ELISA assay (Biotechnne®, UK), as described previously [23]. It was found to contain a cocktail of the following factors IL-10: 242

(sd:14.7), BMP-7:66 (sd:9.2), TNFa: 145 (sd:14), RANKL: 146 (sd:11.8), OPG: 32.23 (sd:3.9), RANKL/OPG Ratio: 4.3 (sd:0.6), measured in pg/30 sec.

The two experimental setups were as follows:

Group (G) 1. late-passage cells exposed short-term to pro-inflammatory stimuli

HGF expanded up to late passage (p.10) were split into five experimental groups (G) according to treatment received, as follows:

G1a received no treatment (negative control group).

G1b was treated with two concentrations of TNFa (TNFa-1= 0.1 µl/ml and TNFa-2= 1 µl/ml),

G1c was treated with two concentrations of LPS (LPS-1= 0.2 µl/ml and LPS-2= 1 µl/ml)

G1d was treated with two concentrations/dilutions of GCF (GCF-1= 5 µl/ml and GCF-2= 10 µl/ml)

G1e was treated with two concentrations of ethanol EtOH (positive control group) (EtOH-1= 100 mM and EtOH-2= 500 mM)

Specifically, HGFs were cultured up to p.10 and then detached (0.25% trypsin/ 1 mM EDTA, 4–5 min) and replated in twelve-well plates at a density of 2.5×10^4 cells/cm². Cells in triplicates were exposed to each of the above-mentioned pro-inflammatory signals for a single exposure for 3 days, while cells not exposed to any signal served as negative control and cells exposed to ethanol (EtOH) as positive control. The experiment was repeated three times.

G2-early-passage cells exposed long-term to pro-inflammatory stimuli

This experimental setup included HGFs at passage 2 that were subjected to long-term exposure to the following pro-inflammatory factors:

G2a received no treatment (negative control group C).

G2b was treated long-term with 1 µl/ml TNFa

G2c was treated long-term with 0.2 µl/ml LPS

G2d was treated long-term with 10 µl/ml GCF

Specifically, HGFs cultured up to p.2 were detached (0.25% trypsin/ 1 mM EDTA, 4–5 min) and replated at a density of 5000 cells/cm². The cells were divided into the three experimental groups and the control. Cultures of each group were passaged every four days. After 24 hours of a new passage, the cells were exposed to each of the above-mentioned pro-inflammatory signals for 72 hours, until the next passage. No medium change was performed until the next passage, so that the total exposure time of the cells to the above-mentioned stimuli would be 72 hours. Cells passaging and/or treatment of the cells continued up to passage 10 (i.e., long-term exposure). Cells were counted at the beginning and the end of each passage with a hemocytometer (Neubauer cell chamber, Laboroptik, Lancing, UK) and plated at 5000 cells/cm², in 100 mm diameter plates (Corning) for each of the passages/exposures. HGFs at early (p.3-4), middle (p.6-7), and late (p.9-10) passages of this experiment were collected during this procedure to be further analyzed by the experimental assays described below. The experiment was repeated three times.

The biological assays performed for each of the experimental set-ups are described below.

Evaluation of cellular senescence

Cell lysates from all the experimental conditions were collected for real-time PCR analysis of senescence-related genes. Moreover, cells of each condition were processed for beta-galactosidase histochemical staining to evaluate cellular senescence.

Beta-galactosidase assay for evaluation of cellular senescence

Expression of senescence-associated beta-galactosidase activity (SA-beta-gal) was determined by a chromogenic assay kit (Sigma-Aldrich Darmstadt, Germany), according to the manufacturer's instructions. Briefly, cells were fixed in 4% paraformaldehyde (PFA), washed with PBS and incubated with beta-Gal staining solution (40 mM citric acid sodium phosphate buffer, 1 M NaCl, 5 mM ferrocyanide, 5 mM ferricyanide, 2% DMF, 20 mM MgCl₂, X-GAL 1 mg/ml in DMSO) for 14–16 h at 37 °C. Stained and unstained cells were counted under a light microscope (Zeiss, Axio Observer A.1) in five randomly selected optical fields of vision ($\times 100$) and the percentage of positive cells was calculated. Blinded subjective scoring of the percentage of blue-stained cells was used to quantify senescent cell fractions.

Assessment of senescence-related gene expression by real-time PCR arrays

Total mRNA was isolated from hGFs cultures exposed to pro-inflammatory pre-conditioning using the Nucleospin RNA isolation kit (Macherey Nagel, Germany) and reverse transcribed (1µg/sample) using superscript first-strand synthesis kit (Takara, Japan) according to manufacturer’s instructions. All reactions were performed using SYBR-Select PCR Master Mix (Applied Biosystems, CA) in Step One Plus thermal cycler (Applied Biosystems), as previously described by our group [75]. Primers were designed using an online primer design tool (www.ncbi.nlm.nih.gov) (Table 1). The senescence-related genes that were used to evaluate gene expression were: *CCND1*, *SUSD6*, and *STAG1*. A standard melting curve was used to check the quality of amplification and specificity. The results were adjusted by amplification efficiency (LinRegPCR) and normalized against *GAPDH* as housekeeping gene.

Table 1. Primers Designed for the Real-time PCR Analyses of Several Senescence-Related Genes and the Respective Amplicon Sizes of the PCR Products.

Gene symbol	Forward (5’-3’)	Reverse (5’-3’)	Amplicon size (bp)
CCND1	AGCTGTGCATCTACACCGAC	GAAATCGTGCGGGGTCATTG	113
SUSD6	TTAGCTGCCGTCTCAACGAG	CTGGTCACGCCTGCTATGAT	170
STAG1	GATTGCAGCTCCGTTGAAGG	GCCGACCATCGACCTAGTTT	125
GAPDH	GACAGTCAGCCGCATCTTCT	GCGCCCAATACGACCAAATC	104

Analysis of SASP-related marker expression using an antibody proteome array

To identify SASP-related marker expression cell lysates collected under the above-described pre-conditioning strategies were processed for SASP-related marker expression analysis using commercial and/or customized chemiluminescence-based antibody arrays (Human Inflammation Antibody Array Membrane 40 Targets, ab134003). These were performed according to the manufacturer’s instructions. Light signals were detected using a Chemiluminescence detection device (MicroChemi, DNR Bioimaging systems, Israel). The detected spots were quantified using the “Dot Blot Analyzer” in the Image J software [76].

Bioinformatics analysis

The statistical significance levels of Tukey’s multiple post-hot tests were summarized in a matrix for all proteins and for all pairwise comparisons against the control group. A heatmap of the matrix containing the FDR values was built in R (R version 4.2.2). Protein names were mapped to UniProt IDs [77] followed by the automatic retrieval of comprehensive annotations that included the protein functions, interactions with other proteins, subcellular localization, gene ontology (GO) terms, and cross-reference identifiers to external pathway resources. STRING-DB [78] was used to build the interaction networks of the statistically significant proteins and to analyze co-expression patterns of the genes corresponding to the proteins of statistical interest. The relevance of each protein group with biological processes, molecular functions, and cellular components was assessed based on the assigned GO terms, following a pooling step to cope with multiple assignments for each protein. Cleveland plots were built on the most frequent GO terms per protein group.

Statistics

All experiments were run in two to four replicates and repeated at least three times. Statistical analysis of the data employed one-way analysis of variance (ANOVA), while multiple comparisons between groups for each of the biological endpoints under investigation were performed with Tukey’s post-hoc test, using Prism 8.0 software (GraphPad, CA, USA). (*p < 0.05 and **p < 0.01). Data are expressed as mean ± standard deviation.

Author Contributions: Conceptualization, V.A. and A.B.; methodology, V.A. and A.B. and D.A.A.; formal analysis, E.A., A.B., A.K. and A.M. writing—original draft preparation, E.A.; writing—review and editing, V.A., A.B., D.A.A., A.K. and A.M.; supervision, V.A. and A.B. All the authors listed have made a significant contribution to writing the manuscript and approving it for publication. All authors have read and agreed to the published version of the manuscript.

Funding: This research received no external funding

Institutional Review Board Statement: The study was conducted according to the guidelines of the Declaration of Helsinki, and approved by the ethical committee of the Institutional Review Board (11/01.07.2020).

Data Availability Statement: Data are available from the corresponding author upon reasonable request.

Acknowledgments: The authors would like to thank Dr. Christopher Nile, Senior Lecturer, School of Dental Sciences, Newcastle University for the ELISA analysis of the GCF.

Conflicts of Interest: The authors declare no conflict of interest.

References

1. Xia, Shijin, Xinyan Zhang, Songbai Zheng, Ramin Khanabдали, Bill Kalionis, Junzhen Wu, Wenbin Wan, and Xiantao Tai. "An Update on Inflamm-Aging: Mechanisms, Prevention, and Treatment." *J Immunol Res.* 2016;2016:8426874. doi: 10.1155/2016/8426874. Epub 2016 Jul 14. PMID: 27493973; PMCID: PMC4963991.
2. Franceschi C, Bonafè M, Valensin S, Olivieri F, De Luca M, Ottaviani E, De Benedictis G. Inflamm-aging. An evolutionary perspective on immunosenescence. *Ann N Y Acad Sci.* 2000 Jun;908:244-54. doi: 10.1111/j.1749-6632.2000.tb06651.x. PMID: 10911963.
3. Franceschi, Claudio, Miriam Capri, Daniela Monti, Sergio Giunta, Fabiola Olivieri, Federica Sevini, Maria Panagiota Panourgia, et al. 2007. "Inflammaging and Anti-Inflammaging: A Systemic Perspective on Aging and Longevity Emerged from Studies in Humans." *Mech Ageing Dev.* 2007 Jan;128(1):92-105. doi: 10.1016/j.mad.2006.11.016. Epub 2006 Nov 20. PMID: 17116321.
4. Clegg A, Young J, Iliffe S, Rikkert MO, Rockwood K. Frailty in elderly people. *Lancet.* 2013 Mar 2;381(9868):752-62. doi: 10.1016/S0140-6736(12)62167-9. Epub 2013 Feb 8. Erratum in: *Lancet.* 2013 Oct 19;382(9901):1328. PMID: 23395245; PMCID: PMC4098658.
5. Doyle R, Sadlier DM, Godson C. Pro-resolving lipid mediators: Agents of anti-ageing? *Semin Immunol.* 2018 Dec;40:36-48. doi: 10.1016/j.smim.2018.09.002. Epub 2018 Oct 4. PMID: 30293857.
6. Anastassiadou V. Older people profile, Chapter e-book. «Management of Complex Conditions in Geriatric Dentistry. Integrated Dental Care for the Elderly» Principal author: Prof. Vasiliki Anastassiadou. Electronic repository of the Action «Hellenic Academic E-Books / Kallipos». 2015 (ISBN: 978-960-603- 244-8). <https://repository.kallipos.gr/handle/11419/3356>.
7. Barnes VM, Kennedy AD, Panagakos F, Devizio W, Trivedi HM, Jönsson T, Guo L, Cervi S, Scannapieco FA. Global metabolomic analysis of human saliva and plasma from healthy and diabetic subjects, with and without periodontal disease. *PLoS One.* 2014 Aug 18;9(8):e105181. doi: 10.1371/journal.pone.0105181. Erratum in: *PLoS One.* 2014;9(11):e114091. PMID: 25133529; PMCID: PMC4136819.
8. Panagiotakos DB, Milias GA, Pitsavos C, Stefanadis C. MedDietScore: a computer program that evaluates the adherence to the Mediterranean dietary pattern and its relation to cardiovascular disease risk. *Comput Methods Programs Biomed.* 2006 Jul;83(1):73-7. doi: 10.1016/j.cmpb.2006.05.003. Epub 2006 Jun 27. PMID: 16806570.
9. Maoyang Lu, Songyu Xuan, Zhao Wang, Oral microbiota: A new view of body health, *Food Science and Human Wellness*, Issue 1, 2019, Volume 8, Pages 8-15, ISSN 2213-4530, <https://doi.org/10.1016/j.fshw.2018.12.001.9>
10. Chrysoshoou C, Pitsavos C, Panagiotakos DB, Skoumas J, Stefanadis C. Association between prehypertension status and inflammatory markers related to atherosclerotic disease: The ATTICA Study. *Am J Hypertens.* 2004 Jul;17(7):568-73. doi: 10.1016/j.amjhyper.2004.03.675. PMID: 15233975.
11. Scannapieco FA, Cantos A. Oral inflammation and infection, and chronic medical diseases: implications for the elderly. *Periodontol 2000.* 2016 Oct;72(1):153-75. doi: 10.1111/prd.12129. PMID: 27501498.
12. Franceschi C, Garagnani P, Parini P, Giuliani C, Santoro A. Inflammaging: a new immune-metabolic viewpoint for age-related diseases. *Nat Rev Endocrinol.* 2018 Oct;14(10):576-590. doi: 10.1038/s41574-018-0059-4. PMID: 30046148.
13. Fulop, T., Larbi, A., Witkowski, J.M. et al. Aging, frailty and age-related diseases. *Biogerontology* 11, 547–563 (2010). <https://doi.org/10.1007/s10522-010-9287-2>.

14. da Costa JP, Vitorino R, Silva GM, Vogel C, Duarte AC, Rocha-Santos T. A synopsis on aging-Theories, mechanisms and future prospects. *Ageing Res Rev.* 2016 Aug;29:90-112. doi: 10.1016/j.arr.2016.06.005. Epub 2016 Jun 25. PMID: 27353257; PMCID: PMC5991498.
15. Tchkonja T, Thomou T, Zhu Y, Karagiannides I, Pothoulakis C, Jensen MD, Kirkland JL. Mechanisms and metabolic implications of regional differences among fat depots. *Cell Metab.* 2013 May 7;17(5):644-656. doi: 10.1016/j.cmet.2013.03.008. Epub 2013 Apr 11. PMID: 23583168; PMCID: PMC3942783.
16. Freund A, Orjalo AV, Desprez PY, Campisi J. Inflammatory networks during cellular senescence: causes and consequences. *Trends Mol Med.* 2010 May;16(5):238-46. doi: 10.1016/j.molmed.2010.03.003. Epub 2010 May 3. PMID: 20444648; PMCID: PMC2879478.
17. Xue W, Zender L, Miething C, Dickins RA, Hernando E, Krizhanovsky V, Cordon-Cardo C, Lowe SW. Senescence and tumour clearance is triggered by p53 restoration in murine liver carcinomas. *Nature.* 2007 Feb 8;445(7128):656-60. doi: 10.1038/nature05529. Epub 2007 Jan 24. Erratum in: *Nature.* 2011 May 26;473(7348):544. PMID: 17251933; PMCID: PMC4601097.
18. Valery Krizhanovsky, Monica Yon, Ross A. Dickins, Stephen Hearn, Janelle Simon, Cornelius Miething, Herman Yee, Lars Zender, Scott W. Lowe, Senescence of Activated Stellate Cells Limits Liver Fibrosis, *Cell*, 2008, Issue 4, Volume 134, Pages 657-667, ISSN 0092-8674, <https://doi.org/10.1016/j.cell.2008.06.049>.
19. Bradley JR. TNF-mediated inflammatory disease. *J Pathol.* 2008 Jan;214(2):149-60. doi: 10.1002/path.2287. PMID: 18161752.
20. Kalliolias GD, Ivashkiv LB. TNF biology, pathogenic mechanisms and emerging therapeutic strategies. *Nat Rev Rheumatol.* 2016 Jan;12(1):49-62. doi: 10.1038/nrrheum.2015.169. Epub 2015 Dec 10. PMID: 26656660; PMCID: PMC4809675.
21. Aquino-Martinez R, Rowsey JL, Fraser DG, Eckhardt BA, Khosla S, Farr JN, Monroe DG. LPS-induced premature osteocyte senescence: Implications in inflammatory alveolar bone loss and periodontal disease pathogenesis. *Bone.* 2020 Mar;132:115220. doi: 10.1016/j.bone.2019.115220. Epub 2020 Jan 2. PMID: 31904537; PMCID: PMC6990876.
22. Bozkurt, S.B., Hakki, S.S., Hakki, E.E. et al. Porphyromonas gingivalis Lipopolysaccharide Induces a Pro-inflammatory Human Gingival Fibroblast Phenotype. *Inflammation* 40, (2017) 144–153. <https://doi.org/10.1007/s10753-016-0463-7>.
23. Apatzidou DA, Nile C, Bakopoulou A, Konstantinidis A, Lappin DF. Stem cell-like populations and immunoregulatory molecules in periodontal granulation tissue. *J Periodontal Res.* 2018 Aug;53(4):610-621. doi: 10.1111/jre.12551. Epub 2018 Apr 23. PMID: 29687448.
24. Subbarao KC, Nattuthurai GS, Sundararajan SK, Sujith I, Joseph J, Syedshah YP. Gingival Crevicular Fluid: An Overview. *J Pharm Bioallied Sci.* 2019 May;11(Suppl 2):S135-S139. doi: 10.4103/JPBS.JPBS_56_19. PMID: 31198325; PMCID: PMC6555362.
25. Chen JR, Lazarenko OP, Haley RL, Blackburn ML, Badger TM, Ronis MJ. Ethanol impairs estrogen receptor signaling resulting in accelerated activation of senescence pathways, whereas estradiol attenuates the effects of ethanol in osteoblasts. *J Bone Miner Res.* 2009 Feb;24(2):221-30. doi: 10.1359/jbmr.081011. PMID: 18847333; PMCID: PMC3276356.
26. Wyganowska-Świątkowska M, Nowak A, Paszyńska E, Grzech-Lesniak K. Ethanol influence on gingival fibroblasts - a real-time in vitro study. *Ann Agric Environ Med.* 2018 Dec 20;25(4):647-650. doi: 10.26444/aaem/78696. Epub 2017 Nov 15. PMID: 30586975.
27. Bae WJ, Park JS, Kang SK, Kwon IK, Kim EC. Effects of Melatonin and Its Underlying Mechanism on Ethanol-Stimulated Senescence and Osteoclastic Differentiation in Human Periodontal Ligament Cells and Cementoblasts. *Int J Mol Sci.* 2018 Jun 12;19(6):1742. doi: 10.3390/ijms19061742. PMID: 29895782; PMCID: PMC6032161.
28. Yang H, Hu C, Li F, Liang L, Liu L. Effect of lipopolysaccharide on the biological characteristics of human skin fibroblasts and hypertrophic scar tissue formation. *IUBMB Life.* 2013 Jun;65(6):526-32. doi: 10.1002/iub.1159. Epub 2013 May 7. PMID: 23653386.
29. Mountziaris PM, Tzouanas SN, Mikos AG. Dose effect of tumor necrosis factor-alpha on in vitro osteogenic differentiation of mesenchymal stem cells on biodegradable polymeric microfiber scaffolds. *Biomaterials.* 2010 Mar;31(7):1666-75. doi: 10.1016/j.biomaterials.2009.11.058. Epub 2009 Dec 5. PMID: 19963268; PMCID: PMC2813987.
30. HAYFLICK L, MOORHEAD PS. The serial cultivation of human diploid cell strains. *Exp Cell Res.* 1961 Dec;25:585-621. doi: 10.1016/0014-4827(61)90192-6. PMID: 13905658.
31. Dimri GP, Lee X, Basile G, Acosta M, Scott G, Roskelley C, Medrano EE, Linskens M, Rubelj I, Pereira-Smith O, et al. A biomarker that identifies senescent human cells in culture and in aging skin in vivo. *Proc Natl Acad Sci U S A.* 1995 Sep 26;92(20):9363-7. doi: 10.1073/pnas.92.20.9363. PMID: 7568133; PMCID: PMC40985.

32. Suzuki, K.; Susaki, E.A.; Nagaoka, I. Lipopolysaccharides and Cellular Senescence: Involvement in Atherosclerosis. *Int. J. Mol. Sci.* 2022, 23, 11148. <https://doi.org/10.3390/ijms231911148>.
33. Nozu A, Hamano S, Tomokiyo A, Hasegawa D, Sugii H, Yoshida S, Mitarai H, Taniguchi S, Wada N, Maeda H. Senescence and odontoblastic differentiation of dental pulp cells. *J Cell Physiol.* 2018 Jan;234(1):849-859. doi: 10.1002/jcp.26905. Epub 2018 Aug 4. PMID: 30078208.
34. Liu J, Zeng J, Wang X, Zheng M, Luan Q. P53 mediates lipopolysaccharide-induced inflammation in human gingival fibroblasts. *J Periodontol.* 2018 Sep;89(9):1142-1151. doi: 10.1002/JPER.18-0026. Epub 2018 Aug 14. PMID: 29964297.
35. Feng G, Zheng K, Cao T, Zhang J, Lian M, Huang D, Wei C, Gu Z, Feng X. Repeated stimulation by LPS promotes the senescence of DPSCs via TLR4/MyD88-NF- κ B-p53/p21 signaling. *Cytotechnology.* 2018 Jun;70(3):1023-1035. doi: 10.1007/s10616-017-0180-6. Epub 2018 Feb 26. PMID: 29480340; PMCID: PMC6021280.
36. Aquino-Martinez R, Rowsey JL, Fraser DG, Eckhardt BA, Khosla S, Farr JN, Monroe DG. LPS-induced premature osteocyte senescence: Implications in inflammatory alveolar bone loss and periodontal disease pathogenesis. *Bone.* 2020 Mar;132:115220. doi: 10.1016/j.bone.2019.115220. Epub 2020 Jan 2. PMID: 31904537; PMCID: PMC6990876.
37. Kim CO, Huh AJ, Han SH, Kim JM. Analysis of cellular senescence induced by lipopolysaccharide in pulmonary alveolar epithelial cells. *Arch Gerontol Geriatr.* 2012 Mar-Apr;54(2):e35-41. doi: 10.1016/j.archger.2011.07.016. Epub 2011 Aug 25. PMID: 21871670.
38. Aquino-Martinez R, Rowsey JL, Fraser DG, Eckhardt BA, Khosla S, Farr JN, Monroe DG. LPS-induced premature osteocyte senescence: Implications in inflammatory alveolar bone loss and periodontal disease pathogenesis. *Bone.* 2020 Mar;132:115220. doi: 10.1016/j.bone.2019.115220. Epub 2020 Jan 2. PMID: 31904537; PMCID: PMC6990876.
39. Wang H, Fu H, Zhu R, Wu X, Ji X, Li X, Jiang H, Lin Z, Tang X, Sun S, Chen J, Wang X, Li Q, Ji Y, Chen H. BRD4 contributes to LPS-induced macrophage senescence and promotes progression of atherosclerosis-associated lipid uptake. *Aging (Albany NY).* 2020 May 11;12(10):9240-9259. doi: 10.18632/aging.103200. Epub 2020 May 11. PMID: 32392533; PMCID: PMC7288959.
40. Dumont P, Balbeur L, Remacle J, Toussaint O. Appearance of biomarkers of in vitro ageing after successive stimulation of WI-38 fibroblasts with IL-1 α and TNF α : senescence associated beta-galactosidase activity and morphotype transition. *J Anat.* 2000 Nov;197 Pt 4(Pt 4):529-37. doi: 10.1046/j.1469-7580.2000.19740529.x. PMID: 11197525; PMCID: PMC1468167.
41. Mavrogenatou E, Konstantinou A, Kletsas D. Long-term exposure to TNF- α leads human skin fibroblasts to a p38 MAPK- and ROS-mediated premature senescence. *Biogerontology.* 2018 Jul;19(3-4):237-249. doi: 10.1007/s10522-018-9753-9. Epub 2018 Mar 26. PMID: 29582209.
42. Wagner W, Horn P, Castoldi M, Diehlmann A, Bork S, Saffrich R, et al. (2008) Replicative Senescence of Mesenchymal Stem Cells: A Continuous and Organized Process. *PLoS ONE* 3(5): e2213. <https://doi.org/10.1371/journal.pone.0002213>.
43. Wagner W, Bork S, Horn P, Krunić D, Walenda T, Diehlmann A, et al. (2009) Aging and Replicative Senescence Have Related Effects on Human Stem and Progenitor Cells. *PLoS ONE* 4(6): e5846. <https://doi.org/10.1371/journal.pone.0005846>.
44. Noren Hooten N, Evans MK. Techniques to Induce and Quantify Cellular Senescence. *J Vis Exp.* 2017 May 1;(123):55533. doi: 10.3791/55533. PMID: 28518126; PMCID: PMC5565152.
45. Debacq-Chainiaux F, Erusalimsky JD, Campisi J, Toussaint O. Protocols to detect senescence-associated beta-galactosidase (SA- β gal) activity, a biomarker of senescent cells in culture and in vivo. *Nat Protoc.* 2009;4(12):1798-806. doi: 10.1038/nprot.2009.191. PMID: 20010931.
46. Campisi J, d'Adda di Fagagna F. Cellular senescence: when bad things happen to good cells. *Nat Rev Mol Cell Biol.* 2007 Sep;8(9):729-40. doi: 10.1038/nrm2233. PMID: 17667954.
47. GeneCards: The Human Gene Database. <https://www.genecards.org/>
48. Hernandez-Segura A, de Jong TV, Melov S, Guryev V, Campisi J, Demaria M. Unmasking Transcriptional Heterogeneity in Senescent Cells. *Curr Biol.* 2017 Sep 11;27(17):2652-2660.e4. doi: 10.1016/j.cub.2017.07.033. Epub 2017 Aug 30. PMID: 28844647; PMCID: PMC5788810.
49. Hernandez-Segura A, Rubingh R, Demaria M. Identification of stable senescence-associated reference genes. *Aging Cell.* 2019 Apr;18(2):e12911. doi: 10.1111/accel.12911. Epub 2019 Feb 1. PMID: 30710410; PMCID: PMC6413663.
50. Kim YM, Byun HO, Jee BA, Cho H, Seo YH, Kim YS, Park MH, Chung HY, Woo HG, Yoon G. Implications of time-series gene expression profiles of replicative senescence. *Aging Cell.* 2013 Aug;12(4):622-34. doi: 10.1111/accel.12087. Epub 2013 May 7. Erratum in: *Aging Cell.* 2020 May;19(5):e13165. PMID: 23590226.

51. Marthandan S, Priebe S, Baumgart M, Groth M, Cellerino A, Guthke R, Hemmerich P, Diekmann S. Similarities in Gene Expression Profiles during In Vitro Aging of Primary Human Embryonic Lung and Foreskin Fibroblasts. *Biomed Res Int.* 2015;2015:731938. doi: 10.1155/2015/731938. Epub 2015 Aug 3. PMID: 26339636; PMCID: PMC4538583.
52. Marthandan S, Baumgart M, Priebe S, Groth M, Schaer J, Kaether C, et al. (2016) Conserved Senescence Associated Genes and Pathways in Primary Human Fibroblasts Detected by RNA-Seq. *PLoS ONE* 11(5): e0154531. <https://doi.org/10.1371/journal.pone.0154531>
53. Fukami J, Anno K, Ueda K, Takahashi T, Ide T. Enhanced expression of cyclin D1 in senescent human fibroblasts. *Mech Ageing Dev.* 1995 Jul 14;81(2-3):139-57. doi: 10.1016/0047-6374(95)93703-6. PMID: 8569279.
54. Leontieva OV, Demidenko ZN, Blagosklonny MV. MEK drives cyclin D1 hyper-elevation during geroconversion. *Cell Death Differ.* 2013 Sep;20(9):1241-9. doi: 10.1038/cdd.2013.86. Epub 2013 Jul 12. PMID: 23852369; PMCID: PMC3741510.
55. Huang CJ, Yang SH, Huang SM, Lin CM, Chien CC, Chen YC, Lee CL, Wu HH, Chang CC. A predicted protein, KIAA0247, is a cell cycle modulator in colorectal cancer cells under 5-FU treatment. *J Transl Med.* 2011 May 28;9:82. doi: 10.1186/1479-5876-9-82. PMID: 21619678; PMCID: PMC3126726.
56. Polato F, Rusconi P, Zangrossi S, Morelli F, Boeri M, Musi A, Marchini S, Castiglioni V, Scanziani E, Torri V, Brogginini M. DRAGO (KIAA0247), a new DNA damage-responsive, p53-inducible gene that cooperates with p53 as oncosuppressor. [Corrected]. *J Natl Cancer Inst.* 2014 Apr;106(4):dju053. doi: 10.1093/jnci/dju053. Epub 2014 Mar 20. Erratum in: *J Natl Cancer Inst.* 2014 Aug;106(8):dju199 doi:10.1093/jnci/dju199. PMID: 24652652; PMCID: PMC3988459.
57. Chen Z, Dodig-Crnković T, Schwenk JM, Tao SC. Current applications of antibody microarrays. *Clin Proteomics.* 2018 Feb 28;15:7. doi: 10.1186/s12014-018-9184-2. PMID: 29507545; PMCID: PMC5830343.
58. Bostanci, Nagihan & Belibasakis, Georgios. Gingival crevicular fluid and its immune mediators in the proteomic era. *Periodontology* 2000. (2017). 76. 10.1111/prd.12154.
59. Subbarao KC, Nattuthurai GS, Sundararajan SK, Sujith I, Joseph J, Syedshah YP. Gingival Crevicular Fluid: An Overview. *J Pharm Bioallied Sci.* 2019 May;11(Suppl 2):S135-S139. doi: 10.4103/JPBS.JPBS_56_19. PMID: 31198325; PMCID: PMC6555362.
60. Maggio M, Guralnik JM, Longo DL, Ferrucci L. Interleukin-6 in aging and chronic disease: a magnificent pathway. *J Gerontol A Biol Sci Med Sci.* 2006 Jun;61(6):575-84. doi: 10.1093/gerona/61.6.575. PMID: 16799139; PMCID: PMC2645627.
61. Rea IM, Gibson DS, McGilligan V, McNerlan SE, Alexander HD, Ross OA. Age and Age-Related Diseases: Role of Inflammation Triggers and Cytokines. *Front Immunol.* 2018 Apr 9;9:586. doi: 10.3389/fimmu.2018.00586. PMID: 29686666; PMCID: PMC5900450.
62. John E. Morley, Richard N. Baumgartner, Cytokine-Related Aging Process, *The Journals of Gerontology*:September 2004, Series A, Volume 59, Issue 9,Pages M924–M929, <https://doi.org/10.1093/gerona/59.9.M924>
63. Gong X, Gong W, Kuhns DB, Ben-Baruch A, Howard OM, Wang JM. Monocyte chemotactic protein-2 (MCP-2) uses CCR1 and CCR2B as its functional receptors. *J Biol Chem.* 1997 May 2;272(18):11682-5. doi: 10.1074/jbc.272.18.11682. PMID: 9115216.
64. Yousefzadeh MJ, Schafer MJ, Noren Hooten N, Atkinson EJ, Evans MK, Baker DJ, Quarles EK, Robbins PD, Ladiges WC, LeBrasseur NK, Niedernhofer LJ. Circulating levels of monocyte chemoattractant protein-1 as a potential measure of biological age in mice and frailty in humans. *Aging Cell.* 2018 Apr;17(2):e12706. doi: 10.1111/accel.12706. Epub 2017 Dec 31. PMID: 29290100; PMCID: PMC5847863.
65. Kamei N, Tobe K, Suzuki R, Ohsugi M, Watanabe T, Kubota N, Ohtsuka-Kowatari N, Kumagai K, Sakamoto K, Kobayashi M, Yamauchi T, Ueki K, Oishi Y, Nishimura S, Manabe I, Hashimoto H, Ohnishi Y, Ogata H, Tokuyama K, Tsunoda M, Ide T, Murakami K, Nagai R, Kadowaki T. Overexpression of monocyte chemoattractant protein-1 in adipose tissues causes macrophage recruitment and insulin resistance. *J Biol Chem.* 2006 Sep 8;281(36):26602-14. doi: 10.1074/jbc.M601284200. Epub 2006 Jun 29. PMID: 16809344.
66. El Khoury J, Toft M, Hickman SE, Means TK, Terada K, Geula C, Luster AD. Ccr2 deficiency impairs microglial accumulation and accelerates progression of Alzheimer-like disease. *Nat Med.* 2007 Apr;13(4):432-8. doi: 10.1038/nm1555. Epub 2007 Mar 11. PMID: 17351623.
67. Singh S, Anshita D, Ravichandiran V. MCP-1: Function, regulation, and involvement in disease. *Int Immunopharmacol.* 2021 Dec;101(Pt B):107598. doi: 10.1016/j.intimp.2021.107598. Epub 2021 May 20. PMID: 34233864; PMCID: PMC8135227.
68. Bettcher BM, Neuhaus J, Wynn MJ, Elahi FM, Casaletto KB, Saloner R, Fitch R, Karydas A, Kramer JH. Increases in a Pro-inflammatory Chemokine, MCP-1, Are Related to Decreases in Memory Over Time.

- Front Aging Neurosci. 2019 Feb 13;11:25. doi: 10.3389/fnagi.2019.00025. PMID: 30814948; PMCID: PMC6381047.
69. Zhou C, Gao Y, Ding P, Wu T, Ji G. The role of CXCL family members in different diseases. *Cell Death Discov.* 2023 Jul 1;9(1):212. doi: 10.1038/s41420-023-01524-9. PMID: 37393391; PMCID: PMC10314943.
 70. Silva TA, Garlet GP, Fukada SY, Silva JS, Cunha FQ. Chemokines in oral inflammatory diseases: apical periodontitis and periodontal disease. *J Dent Res.* 2007 Apr;86(4):306-19. doi: 10.1177/154405910708600403. PMID: 17384024.
 71. Prasad G, McCullough M. Chemokines and cytokines as salivary biomarkers for the early diagnosis of oral cancer. *Int J Dent.* 2013;2013:813756. doi: 10.1155/2013/813756. Epub 2013 Nov 26. PMID: 24376459; PMCID: PMC3860143.
 72. Sahingur SE, Yeudall WA. Chemokine function in periodontal disease and oral cavity cancer. *Front Immunol.* 2015 May 5;6:214. doi: 10.3389/fimmu.2015.00214. PMID: 25999952; PMCID: PMC4419853.
 73. Sarode, Gargi & Sarode, Sachin & Patil, Shankargauda & Yadahalli, Roopa. Significance of CC Group of Chemokines in Oral Squamous Cell Carcinoma and Oral Potential Malignant Disorders: A Review. *World Journal of Dentistry.* (2021). 12. 160-165. 10.5005/jp-journals-10015-1804.
 74. Bakopoulou A, Leyhausen G, Volk J, Tsiftoglou A, Garefis P, Koidis P, Geurtsen W. Assessment of the impact of two different isolation methods on the osteo/odontogenic differentiation potential of human dental stem cells derived from deciduous teeth. *Calcif Tissue Int.* 2011 Feb;88(2):130-41. doi: 10.1007/s00223-010-9438-0. Epub 2010 Dec 14. PMID: 21153807.
 75. Bakopoulou A, Apatzidou D, Aggelidou E, Gousopoulou E, Leyhausen G, Volk J, Kritis A, Koidis P, Geurtsen W. Isolation and prolonged expansion of oral mesenchymal stem cells under clinical-grade, GMP-compliant conditions differentially affects "stemness" properties. *Stem Cell Res Ther.* 2017 Nov 2;8(1):247. doi: 10.1186/s13287-017-0705-0. PMID: 29096714; PMCID: PMC5667471.
 76. Schneider CA, Rasband WS, Eliceiri KW. NIH Image to ImageJ: 25 years of image analysis. *Nat Methods.* 2012 Jul;9(7):671-5. doi: 10.1038/nmeth.2089. PMID: 22930834; PMCID: PMC5554542.
 77. UniProt Consortium. UniProt: the Universal Protein Knowledgebase in 2023. *Nucleic Acids Res.* 2023 Jan 6;51(D1):D523-D531. doi: 10.1093/nar/gkac1052. PMID: 36408920; PMCID: PMC9825514.
 78. Szklarczyk D, Gable AL, Nastou KC, Lyon D, Kirsch R, Pyysalo S, Doncheva NT, Legeay M, Fang T, Bork P, Jensen LJ, von Mering C. The STRING database in 2021: customizable protein-protein networks, and functional characterization of user-uploaded gene/measurement sets. *Nucleic Acids Res.* 2021 Jan 8;49(D1):D605-D612. doi: 10.1093/nar/gkaa1074. Erratum in: *Nucleic Acids Res.* 2021 Oct 11;49(18):10800. PMID: 33237311; PMCID: PMC7779004.

Disclaimer/Publisher's Note: The statements, opinions and data contained in all publications are solely those of the individual author(s) and contributor(s) and not of MDPI and/or the editor(s). MDPI and/or the editor(s) disclaim responsibility for any injury to people or property resulting from any ideas, methods, instructions or products referred to in the content.