

In[159]:=

```
mainDir = SetDirectory[NotebookDirectory[]];  
<< swSVM1101`
```

In[161]:=

```
Clear[fileNames, dataImg]  
fileNames = StringTake[FileNames["*.png"], {1, -5}]  
iMax = Length[fileNames]
```

Out[162]=

```
{d2Pacijent10.12}
```

Out[163]=

```
1
```

In[164]:=

```
i = 1; maskIndeks = 1; numberPixelsAverage = 1; imageNorm = 100;  
dataImg = Import[fileNames[[i]] <> ".png", "Data"];
```

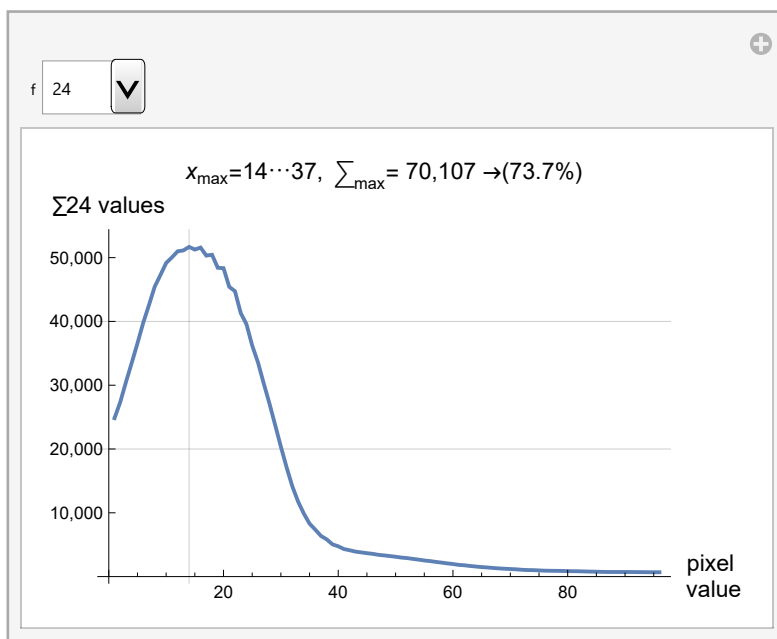
In[166]:=

```
<< swSVM1102x2448`
```

In[167]:=

```
fig1 = manipulateHistListPlotFramed
```

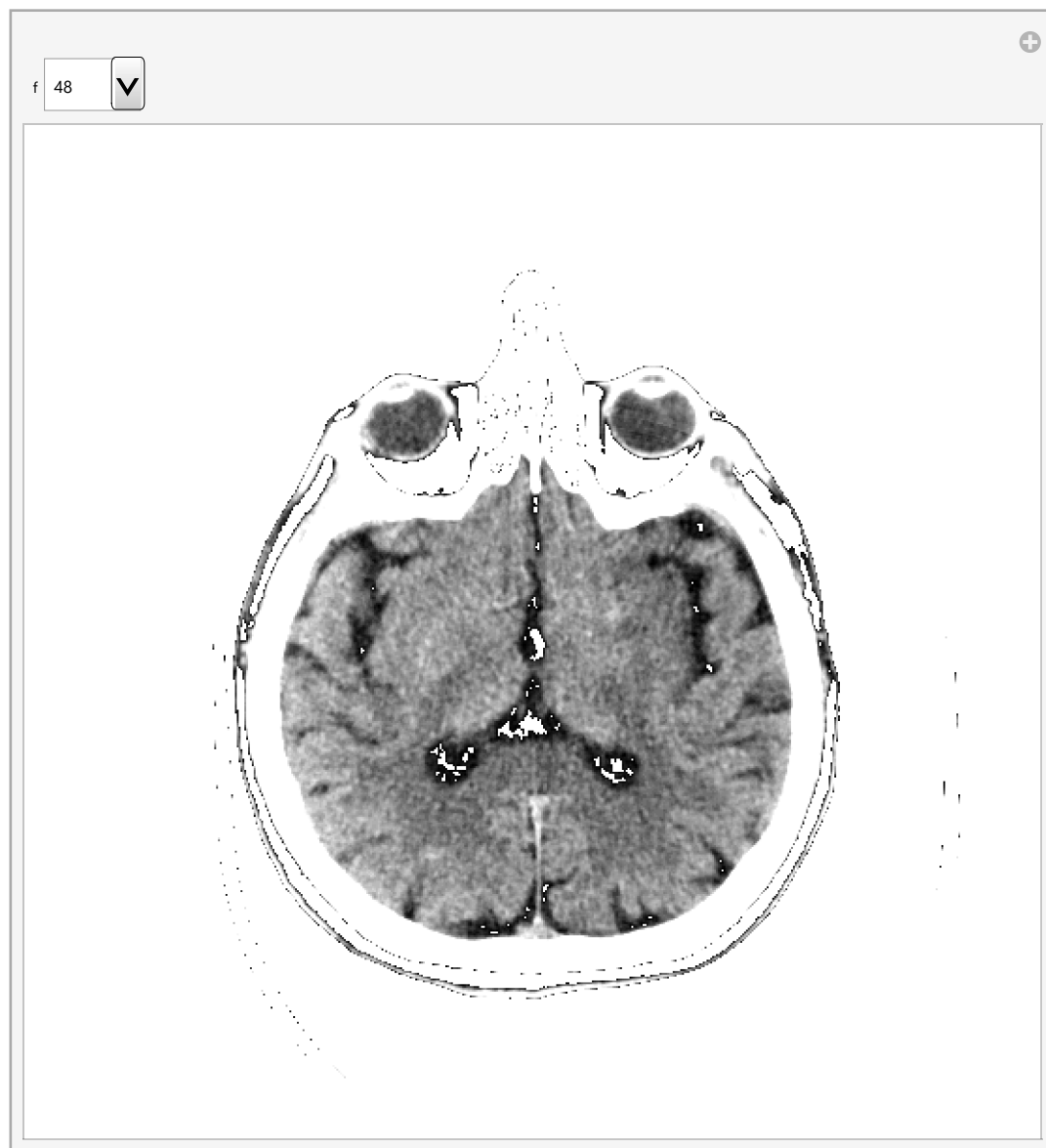
Out[167]=



In[168]:=

fig2 = manipulateHPlotFramed

Out[168]=



In[169]:=

```
(  
  Export["D2x005x24.tif", fig1, ImageResolution -> 300];  
  Export["D2x006x48.tif", fig2, ImageResolution -> 300];  
)
```