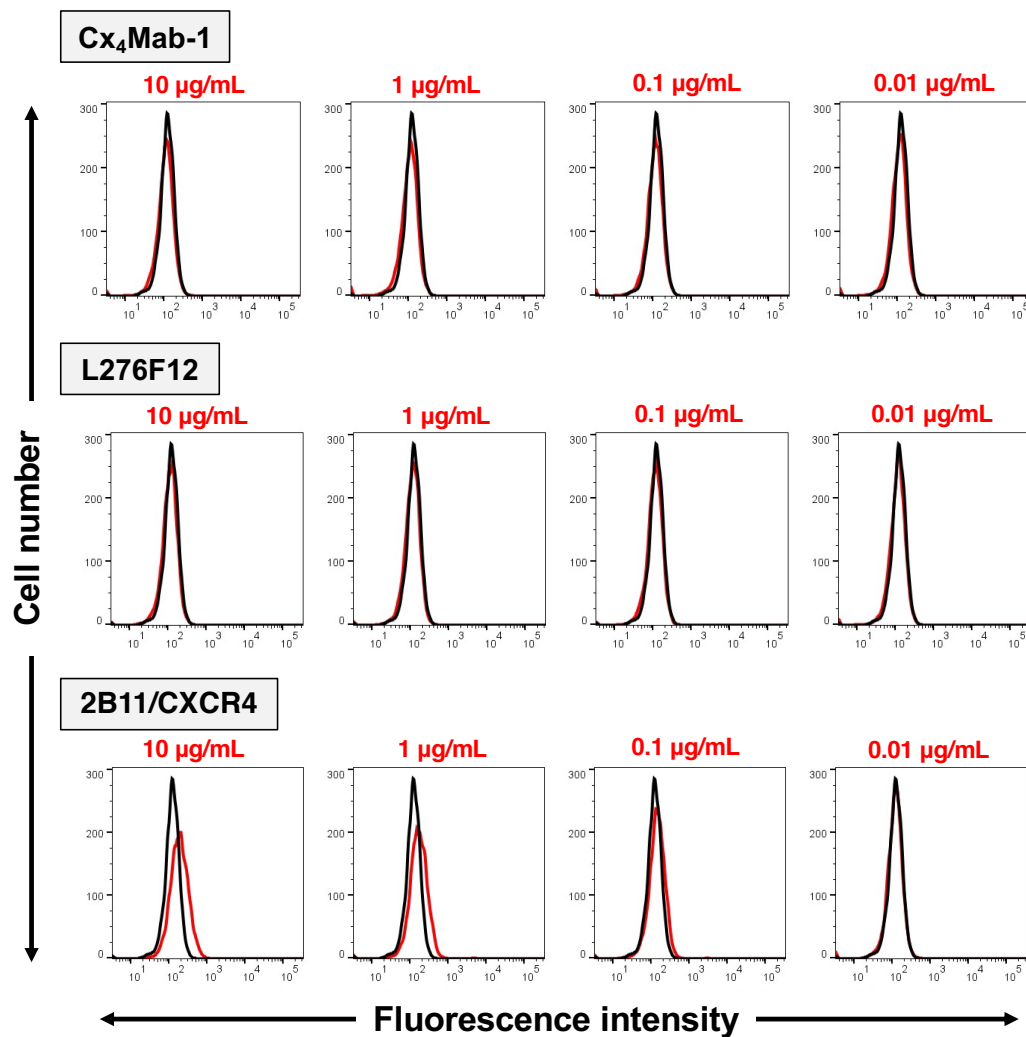


Supplementary Figure 1



Supplementary Figure 1. Flow cytometry of CHO-K1 cells using anti-mCXCR4 mAbs. CHO-K1 cells were treated with 0.01–10 µg/mL of Cx₄Mab-1, L276F12, or 2B11/CXCR4 followed by treatment with Alexa Fluor 488-conjugated anti-rat IgG. The red lines show the cells treated with each mAb. The black line shows the cells treated with blocking buffer and Alexa Fluor 488-conjugated anti-rat IgG (negative control).