

Supplementary material

Spontaneous Cultural Conversion Rate of Mycobacterium avium complex pulmonary disease

Based on BACES severity

Bo-Guen Kim^{1#}, Jin Young Yu^{2#}, Byung Woo Jhun³

¹Division of Pulmonary Medicine and Allergy, Department of Internal Medicine, Hanyang University College of Medicine, Seoul, South Korea.

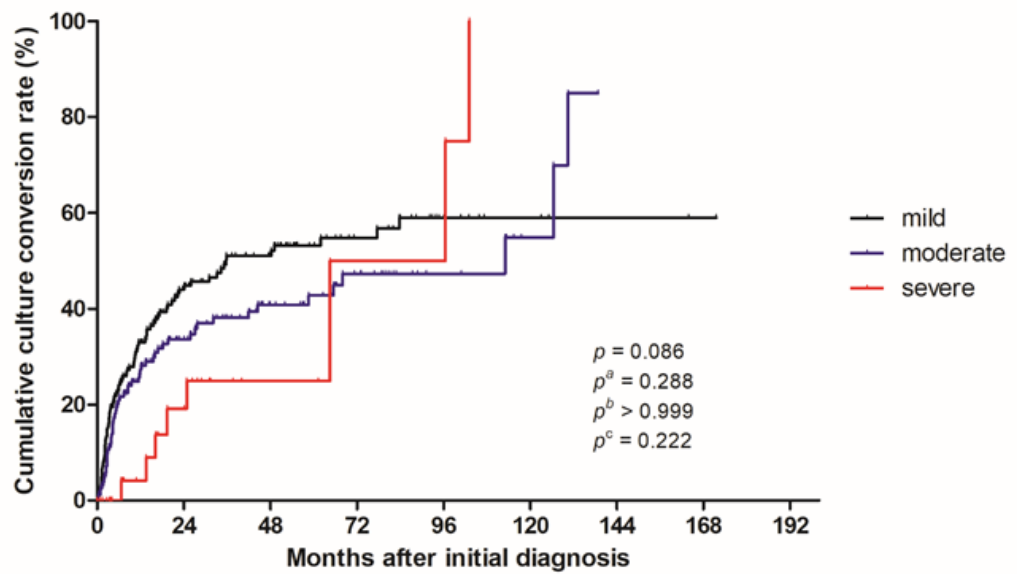
²Department of Medicine, Samsung Medical Center, Sungkyunkwan University School of Medicine, Seoul, South Korea

³Division of Pulmonary and Critical Care Medicine, Department of Medicine, Samsung Medical Center, Sungkyunkwan University School of Medicine, Seoul, South Korea.

[#]Bo-Guen Kim and Jin Young Yu contributed equally to this work

Correspondence: Byung Woo Jhun, Division of Pulmonary and Critical Care Medicine, Department of Medicine, Samsung Medical Center, Sungkyunkwan University School of Medicine, 81 Irwon-ro, Gangnam-gu, Seoul 06351, Republic of Korea. E-mail: byungwoo.jhun@gmail.com

Supplementary figure 1. Cumulative culture conversion rate in all study patients according to BACES severity



No. at risk

BACES Mild	183	69	46	23	11	4	2	1
BACES Moderate	157	64	35	21	8	3	0	0
BACES Severe	33	15	4	2	2	0	0	0