
A Survey in Hawaii for Parasitoids of Citrus Whiteflies (Hemiptera: Aleyrodidae), for Introduction into Greece

Maria-Vasiliki Giakoumaki , [Panagiotis Milonas](#) , [Spyridon Antonatos](#) , [Vasiliki Evangelou](#) ,
George Partsinevelos , [Dimitrios Papachristosa](#) , [Mohsen M. Ramadan](#) *

Posted Date: 12 October 2023

doi: 10.20944/preprints202310.0752.v1

Keywords: Hymenoptera; natural enemies; citrus; citrus blackfly; orange spiny whitefly; *Encarsia perplexa*;
Amitus hesperidum; *Aleurocanthus woglumi*



Preprints.org is a free multidiscipline platform providing preprint service that is dedicated to making early versions of research outputs permanently available and citable. Preprints posted at Preprints.org appear in Web of Science, Crossref, Google Scholar, Scilit, Europe PMC.

Copyright: This is an open access article distributed under the Creative Commons Attribution License which permits unrestricted use, distribution, and reproduction in any medium, provided the original work is properly cited.

Article

A Survey in Hawaii for Parasitoids of Citrus Whiteflies (Hemiptera: Aleyrodidae), for Introduction into Greece

Maria-Vasiliki Giakoumaki ¹, Panagiotis Milonas ¹, Spyridon Antonatos ¹, Vasiliki Evangelou, George Partsinevelos ¹, Dimitrios Papachristos ¹ and Mohsen M. Ramadan ^{2,*}

¹ Scientific Directorate of Entomology and Agricultural Zoology, Benaki Phytopathological Institute, Greece; m.giakoumaki@bpi.gr (M.-V.G.); p.milonas@bpi.gr (P.M.); s.antonatos@bpi.gr (S.A.); p.milonas@bpi.gr (V.E.); g.partsinevelos@bpi.gr (G.P.); g.partsinevelos@bpi.gr (D.P.)

² Division of Plant Industry, Hawaii Department of Agriculture, USA

* Correspondence: author: Division of Plant Industry, Hawaii Department of Agriculture, USA, Tel: (808) 973 9526, Cell: (808) 469 0087, Fax: (808) 973 9533, email: mohsen.m.ramadan@hawaii.gov .

Simple Summary: The orange spiny whitefly, *Aleurocanthus spiniferus* has invaded Greece and expanded its distribution in other countries in European union since 2008. It is a polyphagous pest that includes several highly important crop plants, such as citrus. Damage symptoms and effects on plants are identical to the citrus blackfly, *Aleurocanthus woglumi* (both Hemiptera: Aleyrodidae). The species also share a complex of natural enemies that were successfully introduced to Hawaii during 1974-1998. A short expedition to the islands of Oahu, Hawaii, and Kauai were conducted to retrieve the prominent natural enemies for introduction into Greece. Hawaii was chosen because it does not have citrus diseases and for existence of connections to facilitate research and export permits. Infested leaves were shipped to quarantine facility in Greece for parasitoids emergence and evaluation. Identity of emerged parasitoids, and host testing on the orange spiny whitefly Greece strain were conducted. Only one parasitoid was abundant, characterized using molecular analysis as *Encarsia perplexa*. A summary of infestation records, parasitism rates, and localities on Hawaii Islands has been reported here for the first time since the release of parasitoids. Results showed that the infestations of citrus trees were minimal on islands of Hawaii, and Oahu, primarily on pummelo and sweet orange. Citrus whiteflies were not detected on the island of Kauai during this survey. *E. perplexa* had parasitism rates ranging from 0 - 28 % on the island of Hawaii and 11-65% on the island of Oahu. A starter colony of the parasitoids has been colonized in Greece Quarantine Facility for evaluation. This was the first field survey on Hawaii since the introduction and release of citrus whitefly natural enemies. Further surveys should be repeated in different countries devoid the risk of diseases introduction.

Abstract: Whiteflies of *Aleurocanthus spiniferus* and *A. woglumi* (Hemiptera: Aleyrodidae) are serious pests of citrus and other important fruit crops. The problem in citrus has initiated the successful introductions of several natural enemies for biocontrol programs in Hawaii and many other countries. Here we summarized the history of infestation and biocontrol efforts of the two whiteflies in Hawaii for possible parasitoids importation into Greece. Two Platygasteridae (*Amitus hesperidum* Silvestri, *A. spiniferus* (Brethes) and three Aphelinidae (*Encarsia clypealis* (Silvestri), *E. smithi* (Silvestri), *E. perplexa* Huang and Polaszek) were released in Hawaii for biocontrol of the citrus whiteflies during the period 1974 - 1999. The aphelinid, *Cales noacki* Howard, purposely released for *Aleurothrixus floccoccus* (Maskell) in 1982 was also reported to attack other whiteflies including *Aleurocanthus* species on citrus. An additional aphelinid parasitoid, *Encarsia nipponica* Silvestri, native to Japan and China, was accidentally introduced and found to attack both citrus whiteflies on the islands. Since the colonization of introduced parasitoids in infested fields on four Hawaiian Islands, no survey was done to evaluate their potential impact. We made two short surveys during September-November 2022 on the islands of Kauai, Hawaii, and Oahu to introduce the dominant parasitoids to Greece for the biocontrol of *A. spiniferus*. Results showed that the infestation level was very low on Kauai, Hawaii, and Oahu Islands with mean infestation level ranged 1.4 - 3.1 on Hawaii and Oahu Islands mostly on pummelo and sweet orange, with no detection on the island of Kauai. *Encarsia perplexa*, the dominant parasitoid was characterized using molecular analysis had parasitism rates ranged 0 -28 % on island of Hawaii and 11-65% on island of Oahu. A starter colony of the parasitoids has been colonized in Greece for evaluation This was the first field survey on Hawaii since the introduction and release of citrus whitefly natural enemies.

Keywords: Hymenoptera; natural enemies; citrus; citrus blackfly; orange spiny whitefly; *Encarsia perplexa*; *Amitus hesperidum*; *Aleurocanthus woglumi*

1. Introduction

The orange spiny whitefly, *Aleurocanthus spiniferus* (Quaintance) and citrus blackfly, *A. woglumi* Ashby (Hemiptera: Aleyrodidae) are two of the most important and hazardous citrus pests [1,2]. Both species are regulated as quarantine pests for European Union [3]. *Aleurocanthus woglumi* has not invaded Europe yet. However, climatic modelling predicts that areas in the Mediterranean basin are suitable for establishment [4]. *Aleurocanthus spiniferus* has already invaded Europe with the first record in Italy in 2008 [5]. Since then, its distribution in the European Union has expanded, including Albania [6], Croatia [7], Greece ([1], and Montenegro [8]. Both species cause similar symptoms to the infested host plants. In Hawaii during heavily infestation in 1998 infested trees were not fruiting with a range of 50 - >600 citrus blackfly pupae per infested leaf ([2], Ramadan, HDOA unpublished record). Main hosts are citrus species, but they are quite polyphagous with a wide host range that include mangoes and coffee [9]. Direct damage is caused by nymphs that suck the sap of the leaves causing lack of nutrients and water. Additionally, nymphs excrete honeydew drops that fall on the leaves where the growth of sooty mold is promoted which eventually covers the whole upper surface of the infested leaves. Both *A. spiniferus* and *A. woglumi* originate from Southeastern Asia [4, 10]. In their native area they are not considered major pests, however, during the 20th century both species have invaded other parts of the world causing substantial damage, mainly on citrus crops [2 – 4]. Following their accidental introduction to new areas, biological control programs were initiated to mitigate the damage caused by the outbreaks of the two whiteflies [2, 10 – 14].

In early seventies, *A. spiniferus* was introduced in Hawaii on rose foliage in Honolulu, Oahu Island in 1974. Subsequent surveys discovered it on navel orange, lime, tangerine, and pear, but infestations were reportedly low [15]. Two decades later, *A. woglumi* was also found being introduced on main Hawaiian Islands [15,16]. In both cases, the introduction of citrus whitefly species followed an introduction of biological control agents to compact their population outbreaks. Specifically, the parasitoid *Encarsia smithi* Silvestri and *E. clypealis* (Silvestri) (Hymenoptera: Aphelinidae) were introduced in the islands of Oahu and Hawaii [17] to control *A. spiniferus* and *E. perplexa* Huang & Polaszek (Hymenoptera, Aphelinidae) (misidentified at that time as *Encarsia opulenta* Silvestri) and *Amitus hesperidum* Silvestri (Hymenoptera: Platygasteridae) were introduced to control *A. woglumi* [16], Table 1. *Encarsia smithi* was introduced in the island of Oahu, from Japan in 1974 and among three other Aphelinid species which were found to naturally parasitize *A. spiniferus* in Oahu. *Encarsia smithi* was the most important species, leading to the sufficient reduction of *A. spiniferus* population [17]. It was also reported on *A. woglumi* (Table 1). In 1998 exploratory investigations were carried out in Central America, in Guatemala, and two parasitoid species, *E. perplexa* and *A. hesperidum* were introduced to Hawaii in 1998. The wasps were mass reared on Oahu and released on other islands (Table 1). The two wasp species managed to disperse naturally and successfully controlled the population of *A. woglumi* in all releasing sites, Table 1 [18]. Another parasitoid, *E. nipponica* Silvestri, native to Japan and China, was discovered accidentally as a parasitoid of both whiteflies with low parasitism ranged 0-11.5% (n= 103 infested leaves, Ramadan unpublished data). Similarly, the aphelinid parasitoid, *Cales noacki* Howard, was released in 1981 for biological control of *Aleurothrixus floccosus* (Maskell), subsequently reported to attack *Aleurocanthus* species on citrus [19, HDOA records]. No field evaluation since the introduction and release of all the parasitoids but citrus growers on the islands were content, and less chemical control was used in their fields [2].

Table 1. Hymenopterous parasitoid assembly of *Aleurocanthus spiniferus* and *A. woglumi* confirmed on the Hawaiian Islands, 1974 – 2002.

Target whitefly (Hemiptera: Aleyrodidae)	Introduced and adventive natural enemies						
	Family	species	Origin of introduction	Year of introduction and release period	Colonization records (total numbers released per island)	Establishment records	Release records
<i>Aleurocanthus spiniferus</i> (Quaintance), citrus orange spiny whitefly	Platygastridae	<i>Amitus hesperidum</i> Silvestri	Mexico	1974		Recorded on Oahu	Only Oahu Island
	Platygastridae	<i>Amitus spiniferus</i> (Brethes)	California	1979-1982	Oahu (200)	Introduced for <i>Aleurothrixus floccosus</i> (Maskell). Established on Oahu Island.	Only on Oahu Island in 1982.
	Aphelinidae	<i>Cales noacki</i> Howard	California	Feb. 1981 - Aug. 1982	Lanai (275) Molokai (300) Oahu (12149)	Introduced for <i>Aleurothrixus floccosus</i> (Maskell) Hawaii 1992 Kauai 1997 Oahu 1982	Hawaii 1992 Lanai 1982 Molokai 1982 Oahu 1982
	Aphelinidae	<i>Encarsia clypealis</i> (Silvestri)	Texas	1975		No recovery	Only on Oahu Island.
	Aphelinidae	<i>Encarsia perplexa</i> Huang & Polaszek	Texas	1975	Oahu (165)	No recovery	Only on Oahu, released as <i>Encarsia opulenta</i> (Silvestri).
	Aphelinidae	<i>Encarsia smithi</i> (Silvestri)	Japan (Nagasaki) and Guam	September 1974	Oahu (5330)	Established on Oahu Sep. 1975, reported 1981, 1984, 1999 on Oahu.	Only on Oahu Island, some of the colony from Guam 1984 record (25 adults).

<i>Aleurocanthus woglumi</i> Ashby, citrus blackfly	Platygastrida e	<i>Amitus hesperidum</i> Silvestri	Guatemala	Introduced 1998, released May 1999 - August 2000	Hawaii (20), Kauai (112), Maui (82), Oahu (8595)	Established	Hawaii, Kauai, Maui, Molokai, Oahu Islands
	Aphelinidae	<i>Cales noacki</i> Howard	California	Feb. 1981 - Aug. 1982	Molokai (300) Oahu (12149)	Introduced for <i>Aleurothrixus floccosus</i> (Maskell)	Only on Oahu Island in 1982. Recorded establishe d on Oahu Island.
	Aphelinidae	<i>Encarsia perplexa</i> Huang & Polaszek	Guatemala	Introduced 1998, released April 1999 – June 2002	Hawaii (49190) Kauai (17090) Maui (47025) Molokai (27165) Oahu (5740)	Established	Hawaii, Kauai, Maui, Molokai, Oahu Islands. First identified as <i>Encarsia opulenta</i> (Silvestri)
	Aphelinidae	<i>Encarsia nipponica</i> Silvestri	Adventive, native to Japan and China	-	-	Hawaii 2000, Kauai 2001 Oahu 1997, 1999	Fortuitous species
	Aphelinidae	<i>Encarsia smithi</i> (Silvestri)	Japan (Nagasaki) and Guam	September 1974	Reported on Oahu 1989, 1999 on citrus	Established on Oahu Sep. 1975 Reported in 1999 on Oahu	Only on Oahu Island.

The recent invasion of *A. spiniferus* in the European Union and in Greece in particular, has caused the initiation of a new biological control program against this pest by introducing exotic natural enemies. Moreover, since the introduction of these parasitoids in Hawaii, no surveys have been conducted to determine the status of *A. woglumi* or *A. spiniferus* in the islands and about the presence and the abundance of their introduced parasitoids. Thus, an exploratory investigation on the Hawaiian Islands was performed to investigate the current parasitism rate of *A. woglumi* and to identify the parasitoid assembly species which were present in the populations of the pest. The results of those short surveys will give crucial information to examine the possibility of a successful introduction of those parasitoids either in Greece or in any other area where those serious pests have been established.

2. Materials and Methods

2.1. Collection and emergence of parasitoids.

Two surveys were performed in September and November 2022 on the islands of Hawaii, Kauai, and Oahu (Figure 1). A total of 62 sites located on the three Hawaiian Islands were surveyed. Host plants (mainly citrus trees) were macroscopically surveyed for citrus whitefly infestation and infested leaves were collected. Citrus whiteflies are very rare to be found in Hawaii in recent years. Sites were selected as orchards of citrus, trees in agriculture experimental stations, and local residential homes were examined by permission of landlords. Sites were selected randomly for the survey team to enter property, everywhere on the visited islands. Based on the presence of citrus trees, the survey team searched the trees for infestations and obtained permission to clip infested branches or leaves. Leaves with mature whitefly were picked, not those with only eggs or small nymphs that will not produce parasitoids.

The infested leaves were placed in paper envelopes which were sealed. (AJM paper grocery, lunch bags, USA, of different sizes as needed for holding infested leaves). Plastic bags are not suitable for life insects, <https://www.gofoodservice.com/brand/ajm>.

The leaves that were collected were picked according to the stage of nymphs of the citrus blackfly. Leaves that carried all the stages and older nymphs were preferred. Leaves with mature nymphs (3rd and 4th nymphs) were preferred for collection since these are the stages contain developed parasitoids. Leaves with eggs - 2nd nymphs were not collected since parasitoids from such leaves may not develop in the holding containers.

At the end of each collection day, all envelopes with leaf samples were transported to the insectary of the Hawaii Department of Agriculture, Plant Pest Control Branch in Honolulu. In the insectary, the leaves were carefully removed from the envelopes and placed in 70 mesh clear vinyl nylon screen collapsible lightweight aluminum cages (30x30x60 cm) appropriate for parasitic wasps' emergence. Honey drops were placed in the inner surface of the mesh as food for adult wasps. We used smeared drops of SUE BEE® SPUN® honey on the inside cage sides and top for adult parasitoid feeding as indicated by HDOA insect rearing (<https://siouxhoney.com/sue-bee-spun-honey/>). Emerged adult parasitoids were aspirated and collected in falcon vials with honey drops (Falcon 50mL Conical Centrifuge Tubes; Fisher Scientific: A Thermo Fisher Scientific Brand (<https://www.fishersci.com/shop/products/falcon-50ml-conical-centrifuge-tubes>)).

Emerged parasitoids and remaining infested leaves were shipped to Greece and placed in the containment facility in the biosecurity greenhouse at the Scientific Directorate of Entomology and Agricultural Zoology, in Benaki Phytopathological Institute (38°04'52.0"N 23°48'47.9"E). Emerged parasitoids were placed inside mesh cages with bitter orange, *Citrus aurantium* L. (Rutaceae), seedlings infested by *A. spiniferus* in the biosecurity greenhouse under controlled environmental conditions of 25°C ± 2°C, R.H. 60-70%, and natural day light photoperiod. *Citrus aurantium* seedlings were in mesh cages (45x45x45cm) which were put inside of larger ones (60x60x60 cm, 70 mesh) polyester white breathable fabric used to cover cages for rearing delicate encyrtid size parasitoids.

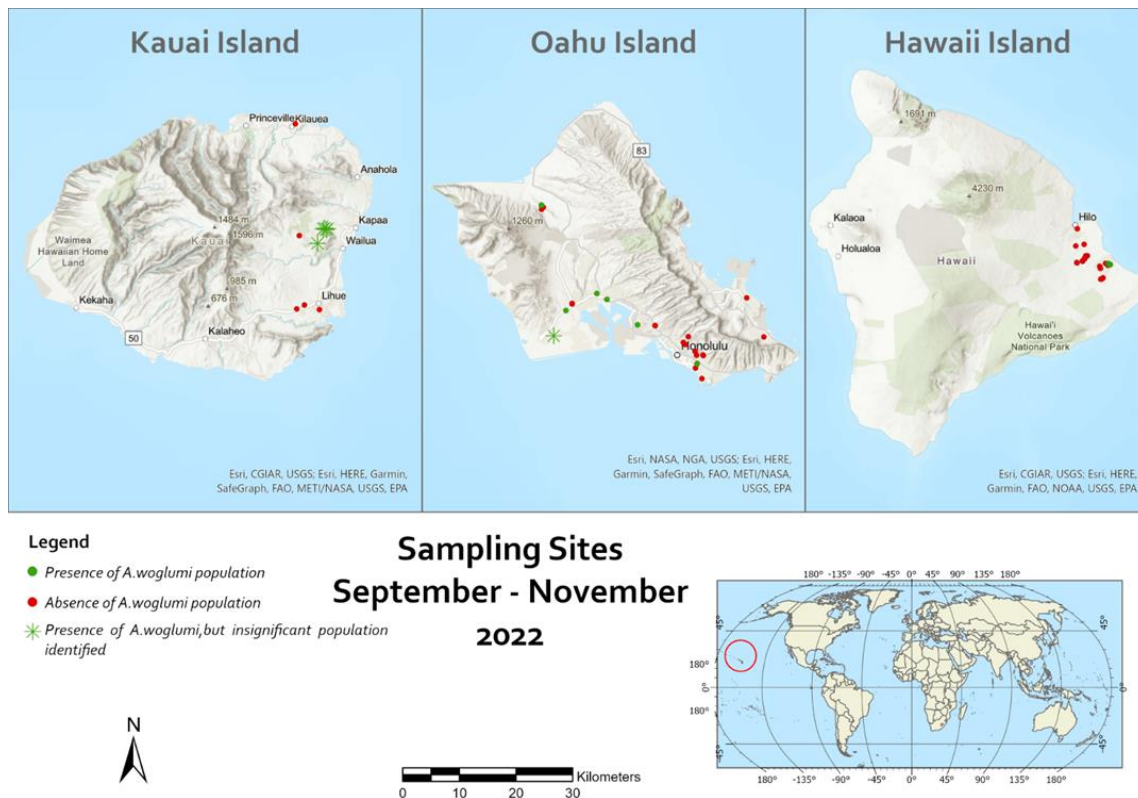


Figure 1. Sampling locations for *Aleurocanthus woglumi* and its parasitoids in the Hawaiian Islands.

2.2. Identification of the parasitoids.

The identification of emerged parasitoids was based on morphological examination and molecular analyses. Morphological identification was performed according to appropriate keys and illustrations [20 – 23]. For distinguishing *Amitus heperidum*: The female is shiny black (0.75 mm long). The female's antenna is ten-segmented, with the last three segments forming a club. The male is like the female, with a filiform ten-segmented antenna and curved scape. A lateral plate-like process on the male fourth antennal segment is characteristic of the species, Figure 2 D, [20, 21, 23]. For identification of *Encarsia perplexa*, the mid lobe of mesoscutum dark, T1 and T2 of gaster largely pale (Figure 2 C). Male head is like that of female. Mesosoma orange yellow except pronotum, anterior half of mid lobe of mesoscutum, to propodeum and petiole are dark brown. Gaster brown to dark (Figure 2 C). Other characters for differentiation of closely related species are explained in [22]. The specimens were prepared for slide mounting as described as in slide preparation of chalcidoids by Noyes [24 – 26].

The insects that were destined for molecular analysis were stored in 1.5 mL microtubes with snap cap RNase & DNase free ClearLine®, filled with ethanol 98% (Analytical grade, Fisher Scientific). The specimens were stored and coded separately. In total, DNA was extracted from 45 parasitoids by using the DNeasy Blood & Tissue Kit (QIAGEN) according to manufacturer's protocol. At the beginning of the procedure, every single insect was left on a filter paper until the ethanol was completely removed and the final DNA volume reached 20µL. Two sets of primers were used for species determination during the Polymerase Chain Reaction, targeting the genes of Cytochrome Oxidase I (COI) and 28S ribosomal RNA, which can investigate further the species' determination [27,28]. For the amplification of the Barcoding gene, the primers LCO-1490 (5'-GGTCAACAAATCATAAAGATATTGG-3') and HCO-2198 (5'-TAAACTTCAGGGTGACCAAAAATCA-3') were used [29], while the set of 28S-D2-F (5'-AGAGAGAGTTCAAGAGTACGTG-3') and 28S-D2-R (5'-TTGGTCCGTGTTTCAAGACGGG-3') was used for the amplification of the 28S gene [30].

Each PCR reaction mixture for both primers set contained 5 μ L of 10 \times PCR buffer, 1.5 μ L of MgCl₂ (50 mM), 0.5 μ L of dNTPs (10 mM), 1 μ L of each primer (10 μ M), 5 μ L of template DNA (20-40ng), 0.5 μ L of the thermostable Taq DNA polymerase (Platinum, Invitrogen) and molecular grade water (up to 50 μ L). The thermocycling program included an initial denaturation step of 3 min at 94°C, followed by 35 cycles of 94°C for 30 sec, 51°C (LCO-HCO) or 58°C (28S) for 45 sec and 72°C for 1 min and a final step of extension at 72°C for 5 min.

The two template's amplification was confirmed separately by using 5 μ L of the PCR products on 1.2% agarose gel electrophoresis, that finally resulted in the observation of an expected length product of 658bp and 550bp, correspondingly. The rest of the volume of 45 μ L was purified according to the supplier's instructions of the NucleoFast 96 PCR Clean-up kit (Macherey-Nagel GmbH & Co. KG) and then forwarded to Macrogen Europe (Netherlands) for automated sequencing analysis. The obtained sequencing results were optimized, generated, and aligned through the software Geneious Prime 2023.0.1 (<https://www.geneious.com/>). The produced sequences were checked for their authenticity at genus or species level according to the BLAST public interface of the National Center for Biotechnology Information (NCBI - <https://blast.ncbi.nlm.nih.gov>).

2.3. Infestation and Parasitism Rate.

The parasitism rate of *Amitus* sp. and *Encarsia* sp. to *A. woglumi* from the collected leaves was estimated from the exit holes on the body of the nymphs. The exit hole of *A. woglumi* adults differs from the exit hole of the parasitoids by the shape of exit holes on the shells. The holes due to the exit of parasitoids are circular and placed at the back of the nymph, while those from the exit hole of *A. woglumi* adults is a T-shaped slit (Figure 2 A, E). To determine parasitism rate, all nymphs on each leaf were counted, under a Nikon SMZ-745 stereomicroscope in the laboratory. The nymphs were listed as "parasitized" (if the shells had parasitoid circular exit holes as in Figure 2 E). All eclosed parasitoids were *Encarsia perplexa* and "not parasitized" (if the shells had the T-shape exit slit of the *A. woglumi* as in Figure 2 A), while broken shells were excluded from the results. Finally, the leaf samples were frozen at -20°C for 72 hours before discarded.

The level of infestation was determined by the population size of the citrus blackfly, which was categorized depending on the total number of nymphs of all developmental stages, per leaf and the total number of leaves collected per location. The infestation was scored as follows: 1 = 1 to 10 nymphs, 2 = 11 to 30 nymphs, 3= 31 to 99 nymphs, 4 = more than 100 nymphs per leaf. An average score was calculated for each location. Since we collected only infested leaves, there was no 0 score. The eggs of the citrus blackfly were excluded from the score.

The maps were made using the ArcGIS Pro, Version 3.0.3 (Redlands, CA: Environmental Systems Research Institute, Inc., <https://www.esri.com>), ESRI and Natural Earth (Free vector and raster map data @ naturalearthdata.com).

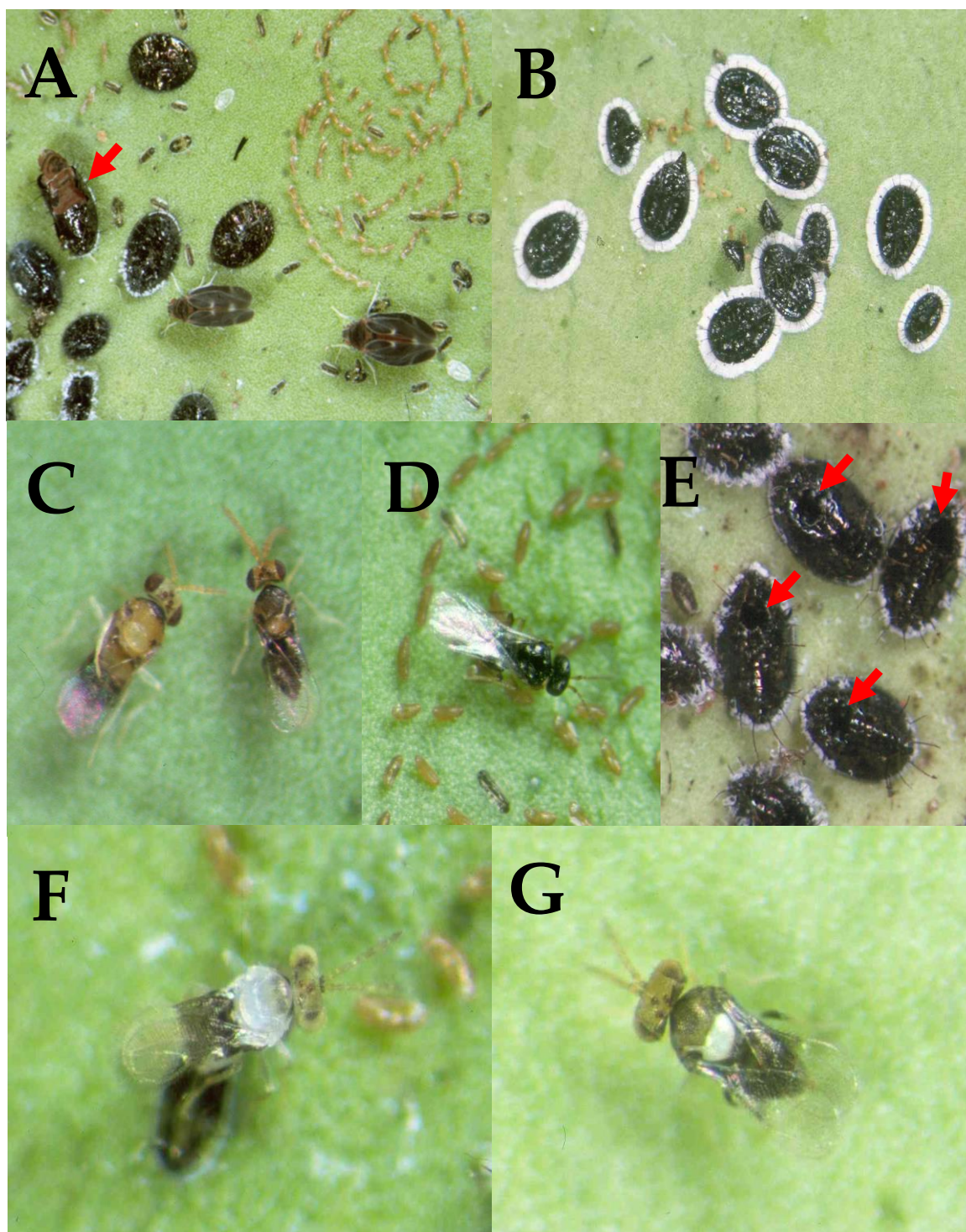


Figure 2. A) Citrus blackflies *Alerocanthus woglumi* (arrow showing unparasitized pupa, and egg spirals); B) orange spiny whitefly, *A. spiniferus* and their parasitoid assembly established in Hawaii. The pupal stage of orange spiny whitefly with white wax fringe that surrounds their margins is twice as large as the orange spiny whitefly. C) *Encarsia perplexa* male and female introduced from Guatemala 1998; D) *Amitus hesperidum* introduced from Guatemala 1998; E) Citrus blackfly parasitized pupae, arrows showing parasitoid's circular exit holes. The oval-shaped pupa is black, convex, with dark dorsal spines. The marginal wax tubes produce a cottony fringe on the pupal margin. F) *Encarsia nipponica* adventive, G) *Encarsia smithi* introduced from Japan 1975 established on Oahu.

3. Results & Discussion

Survey results indicated that *A. woglumi* populations are rare on the Hawaiian Islands. Out of the 62 locations inspected for *A. woglumi* populations, its presence was found in only 11 sites (Figure 1). On Kauai Island no infestation was found and on Hawaii Island *A. woglumi* populations were found in just 3 sites out of the 23 inspected. Moreover, the infestation rate was quite low and only isolated citrus trees either on Oahu or in Hawaii Islands were found with large number of infested leaves (≥ 10 leaves). Throughout the survey, populations of other Aleyrodidae were very low and only a few isolated populations of *Aleurothrixus floccosus* (Maskell), and *Aleurodicus dispersus* Russell, were found.

Parasitism of *A. woglumi* nymphs was much higher on Oahu than Hawaii Island. Parasitism rates ranged 0 - 28 % on Hawaii Island and 11 - 65% on Oahu Island (Tables 2, 3).

Based on the morphological and molecular data, the emerged parasitoids were identified as *E. perplexa*. Only were a few of them identified as *Amitus spiniferus* Brethes, a parasitoid introduced for *A. floccosus*.

In specific, the molecular comparison via the NCBI database resulted in high similarity rates, suggesting that the analyzed parasitoids belong undoubtedly to the genus of *Encarsia*. Most of the produced consensus sequences were similar to *E. perplexa* at a range of 98.6 to 99.5%. The NCBI contained only limited data for the genus *Amitus* for both genes, a fact that limited the determination of some individuals to the genus level. Sequencing data provided from the USDA supported that these parasitoids are highly similar to the species *Amitus spiniferus*, much more than to the *A. hesperidum*.

Our survey results confirm that *A. woglumi* on the Hawaiian Islands is effectively controlled by the introduced natural enemies and that *E. perplexa* is the dominant parasitoid species. We were not able to find *A. hesperidum* either due to competition with *E. perplexa* or because its population is at very low levels not being detectable with our sampling effort during this short survey. In other locations where both *E. perplexa* and *A. hesperidum* have been released to control *A. woglumi*, soon after the reduction of the infestation, *E. perplexa* had become the dominant species. This is mainly due to its longer lifespan compared to *A. hesperidum*. The latter is considered an effective parasitoid at high densities of its host whereas *E. perplexa* is more efficient at low host density [11].

Table 2. Infestation rates and parasitization of *A. woglumi* infesting Citrus species on Oahu Island during September-November 2022. ^a residential house, roadside, highway service area, farmland, research station, community garden, cemetery, park, church.

Survey area and habitat ^a	Citrus Plant	Coordinate and elevation	Date	Total Number of leaves collected	Total Number of nymphs	Level of infestation on	% parasitism
University of Hawaii at Manoa	Sour orange	21° 18' 17.98" N 157° 48' 51.87" W, 40 m	26/9/2022	0	0	0	-
University of Hawaii at Manoa	Sweet lime	21° 18' 15.16" N 157° 48' 48.99" W, 38 m	"	0	0	0	-
Ala Wai Community	lime	21° 17' 02.50" N	"	0	0	0	-

Garden		157° 49' 37.15" W, 1.5 m						
Waimanalo Research Station	Citron,	21° 20' 07.91" N 157° 42' 55.01" W, 23 m	"	0	0	0	-	
Kapaakea Lane, Honolulu	tangerine	21° 17' 27.82" N 157° 49' 25.95" W, 4 m	"	0	0	0	-	
Kapaakea Lane, Honolulu	pummelo	21° 17' 25.55" N 157° 49' 26.61" W, 3.6 m	"	9	118	1.44 ± 0.49	17.8%	
Pearl City Urban Botanical Garden	Sweet orange	21° 23' 38.76" N 157° 58' 38.08" W, 8.5 m	27/9/2022	71	1471	1.76 ± 0.78	56.6%	
Diamond Head Community Garden	tangelo	21° 16'02.09" N 157° 58' 59.55" W, 0.9 m	"	0	0	0	-	
Moanalua Gardens	Grapefruit	21° 20' 52.68" N 157° 53' 28.74" W, 6.4 m	"	0	0	0	-	
North Shore. Poamoho Research Station	Sweet orange	21° 32' 38.00" N 158° 05' 16.28" W, 189 m	28/9/2022	345	11981	2.17 ± 0.95	19.7%	
Salt Lake Blvd	Sweet lime	21° 21' 09.13" N 157° 55' 30.36" W, 29 m	"	75	158	1.37 ± 0.48	53.8%	
North Shore, Hawaii Queen bees, Hinshaw Farms	Sour orange	21° 32' 11.10" N 158° 05' 16.82" W, 226 m	"	0	0	0	-	
North Shore, Hawaii Queen bees,	lemon	21° 32' 17.54" N	"	0	0	0	-	

Hinshaw Farms		158° 05' 14.90" W, 225 m						
Hawaii Agriculture Research Center, Kunia	tangelo	21° 23' 09.02" N 158° 02' 14.67" W, 82.6 m	2/10/2022	0	0	0	-	
Hawaii Agriculture Research Center 2	lemon	21° 23' 07.28" N 158° 02' 17.16" W, 84.4 m	"	0	0	0	-	
Manoa valley community gardens	citron	21° 18' 53.77" N 157° 48' 25.49" W, 57 m	"	0	0	0	-	
Nuuanu Mauna ala Royal mausoleum	pummelo	21° 19' 30.33" N 157° 50' 49.81" W, 64 m	26/10/2022	0	0	0	-	
Nuuanu old Pali drive	lemon	21° 21' 14.24" N 157° 48' 37.68" W, 308 m	"	0	0	0	-	
Tantalus lookout	tangerine	21° 19' 06.92" N 157° 49' 48.23" W, 277 m	"	0	0	0	-	
Kailua	lemon	21° 23' 47.09" N 157° 44' 44.49" W, 0.6 m	"	0	0	0	-	
Mahiole street, Moanaloa	Sour orange	21° 20' 49.79" N 157° 53' 21.81" W, 11 m	31/10/2022	0	0	0	-	
North Shore Poamoho Research Station	sweet orange, sweet lime	21° 32' 38.00" N 158° 05' 16.28" W, 189 m	"	573	23168	2.34 ± 0.81	24.9%	
Waikele	tangerine	21° 24' 03.18" N 158° 00' 13.75" W,	1/11/2022	13	389	2.00 ± 1.03	34.4%	

								60.6 m
								21° 22'
Aloun farm	pummelo	28.47" N 158° 02' 42.94" W,	"	14	212	1.78 ± 0.67	11.5%	56.7 m
								21° 19'
Royal Mausoleum of Hawaii	lime	30.33" N 157° 50' 49.81" W,	"	0	0	0	-	64 m

Table 3. Infestation rates and parasitization of *A. woglumi* infesting Citrus species on Hawaii Island during October 2022. ^a residential house, roadside, highway service area, farmland, research station, community garden, cemetery, park, church.

Survey area and habitat ^a	Citrus Plant	GPS and elevation	Date	Total Number of leaves collected	Total Number of nymphs	Level of infestation	% parasitism
Waiakea	Sweet orange	19° 38' 30.98" N 155° 04' 51.67" W, 194 m	27/10/2022	0	0	0	-
Waiakea Research station	lime	19° 38' 41.46" N 155° 04' 37.82" W, 173 m	"	0	0	0	-
Hawaii Department of Agriculture, Hilo	lemon	19° 42' 23.03" N 155° 04' 26.25" W, 11 m	"	0	0	0	-
Kurtistown 1	Pumme lo	19° 35' 35.98" N 155° 03' 30.41" W, 206 m	"	0	0	0	-
Kurtistown 2	Pumme lo	19° 35' 30.36" N 155° 03' 29.91" W, 199 m	"	0	0	0	-
Kurtistown 3	Sweet orange	19° 35' 00.29" N 155° 03' 36.53" W, 242 m	"	0	0	0	-
Kurtistown 4	Sour orange	19° 34' 38.83" N 155° 03' 56.19" W, 271 m	"	0	0	0	-
Hawaiian Paradise Park 1	Grapefruit	19° 36' 12.88" N 154° 56' 51.46" W, 13 m	28/10/2022	173	17848	3.14 ± 0.76	2.7%
Hawaiian Paradise Park 2	Pumme lo	19° 36' 12.88" N 154° 56' 51.46" W, 13 m	"	7	423	3.00 ± 0.50	0.0%
Hawaiian Paradise Park 3	Pumme lo	19° 34' 17.70" N 154° 57' 21.50" W,	"	6	212	2.50 ± 0.80	28.3%

		50 m					
Hawaiian Paradise Park 4	Sweet orange	19° 34' 35.47" N 154° 57' 18.39" W,	"	0	0	0	-
		9 m					
Hawaiian Paradise Park 5	citron	19° 34' 52.95" N 154° 57' 39.69" W,	29/10/20 22	0	0	0	-
		39 m					
Hawaiian Paradise Park 6	lime	19° 34' 14.46" N 154° 57' 45.16" W,	30/10/20 22	0	0	0	-
		40 m					
Hawaiian Paradise Park 7	lemon	19° 35' 39.96" N 154° 57' 21.77" W,	31/10/20 22	0	0	0	-
		28 m					
Keeau 1	Sour orange	19° 37' 06.79" N 155° 02' 37.40" W,	29/10/20 22	0	0	0	-
		121 m					
Keeau 2	lemon	19° 36' 52.38" N 155° 02' 48.90" W,	"	0	0	0	-
		149 m					
Keeau 3	tangerine	19° 36' 23.02" N 155° 02' 59.69" W,	"	0	0	0	-
		177 m					
Keeau 4	Sweet orange	19° 37' 11.96" N 155° 02' 32.56" W,	"	0	0	0	-
		117 m					
Keeau 5	Pumme lo	19° 37' 42.04" N 155° 02' 19.12" W,	"	0	0	0	-
		123 m					
Keeau 6	tangelo	19° 38' 42.04" N 155° 02' 32.56" W,	"	0	0	0	-
		79 m					
Ainaloa 1	tangerine	19° 31' 40.76" N 154° 59' 35.89" W,	"	0	0	0	-
		217 m					
Ainaloa 2	lime	19° 31' 20.12" N 155° 00' 05.43" W,	"	0	0	0	-
		226 m					
Ainaloa 3	lemon	19° 31' 47.83" N 154° 59' 49.05" W,	"	0	0	0	-
		201 m					

In 1997 the infestation by *A. woglumi* was so severe on Oahu Island that every citrus tree including oranges, lemon, and pummelo had a range of 50 - >600 citrus blackfly pupae/leaf (Figure 2 A). In 1998 all citrus trees on Oahu (urban trees and orchards) had reduced to no fruiting from the high infestation. There were complaints from citrus growers on the Hawaii and Kauai Islands requesting for parasitoid introductions. Recently, no reports of damage incurred by the pest or reports of growers or stakeholders having issues with citrus blackfly.

Non-citrus trees and ornamental shrubs (orange jasmine, *Murraya paniculate* (L.), Rutaceae) were also utilized for oviposition but were not normally affected by this whitefly. Mean number of egg mass/leaflet was 16.4 ± 2.8 (n= 25, during June 1997, Oahu Island) and 22.4 ± 3.1 eggs/mass (n=22). Citrus blackfly eggs hatched with no development beyond first nymph on non-citrus trees.

The infestation in 1997 was the worst on lemon trees (419.4 ± 32.4 pupae/leaf). Pummelo *Citrus maxima* (Burm.) Merr., infestation was even higher with 112.5 ± 14.0 nymphs/cm² leaf, compared with Meyer lemon, *Citrus meyeri* Yu. Tanaka (45.8 ± 15.0 nymphs/cm² leaf), pink tecomia, *Tabebuia rosea* DC., Bignoniaceae (13.8 ± 2.1 nymphs/cm² leaf), and mango (5.5 ± 1.3 nymphs/cm² leaf). These records demonstrated the potential of the citrus blackfly to infest the Hawaiian citrus and mango trees even faster than any other mainland States because of the favorable environmental conditions ([2], and unpublished data).

From the adult parasitoids that emerged either in Hawaii and shipped into Greece or emerged as adults in the quarantine facility of Benaki Phytopathological Institute in Athens >3000 adults were introduced into rearing cages with young *Citrus aurantium* plants infested with *A. spiniferus*. Parasitoids were introduced into the cages as they emerged from *A. woglumi* nymphs for a period of almost 20 days. Only *E. perplexa* adults emerged and they did not parasitize *A. spiniferus* in Greece. Parasitoids remain alive even after 30 days, without parasitizing any *A. spiniferus* nymph. *Encarsia perplexa* is known to parasitize *A. woglumi*, *Aleuroclava kuwani* (Takahashi) and *Aleuroplatus pectiniferus* Quaintance & Baker [22]. *Amitus hesperidum* was not recovered from the shipments. The parasitoid *A. hesperidum* was difficult to be recorded even soon after its initial release on the Hawaiian Islands due to extremely low population densities, which also confirmed from the current surveys. *Encarsia smithi*, a known parasitoid of *A. spiniferus*, has been found in the past on Oahu Island, [16] but was not recovered during the current surveys.

The current study confirms that *A. woglumi* is efficiently controlled by natural enemies on the Hawaiian Islands and that the dominant parasitoid is *E. perplexa*. *Amitus hesperidum* is either extinct or may have been present at extremely low populations due to the very low host density and scattered populations of *A. woglumi*. That parasitoid has a short adult life span, that limits its searching efficiency for new suitable hosts to parasitize. According to the results of the surveys and of the laboratory experiments we can conclude that the parasitoid *E. perplexa* which was recovered on the Hawaiian Islands is able to control *A. woglumi* but is not the appropriate species for *A. spiniferus*. Additional exploratory surveys are ongoing in Southeast Asia aiming to locate *A. hesperidum* or other *Encarsia* species that are reported to parasitize the orange spiny whitefly.

Acknowledgments: The current study has been partially funded by the Greek Ministry of Rural Development and Food. Mrs Iro Georgopoulou is thanked for creating the maps. We also thank Mr. Craig Kaneshige for helping in the transportation of the team members during the Kauai Island survey. Photos are credited to Walter Nagamine (Hawaii Department of Agriculture).

References

1. Kapantaidaki, D., E., Antonatos, S., Kontodimas, D., Milonas, P., Papachristos, D., P. Presence of the invasive whitefly *Aleurocanthus spiniferus* (Hemiptera: Aleyrodidae) in Greece. Bulletin OEPP/EPPO Bulletin. **2019**, 49 (1), 127–131
2. Ramadan, M., M., Kaufman, L., V., Wright, M., G. Insect and weed biological control in Hawaii: Recent case studies and trends. Biol. Control. **2023**, 179, 105170. <https://doi.org/https://doi.org/10.1016/j.biocontrol.2023.105170>
3. EFSA Plant Health Panel (EFSA PLH Panel), Bragard, C., Dehnen-Schmutz, K., Di Serio, F., Gonthier, P., Jacques, M.-A., Jaques Miret, J., A., Justesen, A., F., Magnusson, C., S., Milonas, P., Navas-Cortes, J., A., Parnell, S., Potting, R., Reignault, P., L., Thulke, H.,-H., Van der Werf, W., Vicent Civera, A., Yuen, J., Zappalà, L., Navarro, M., N., Kertesz, V., Czwienczek, E., MacLeod, A. 2018. Scientific Opinion on the pest categorisation of *Aleurocanthus* spp. EFSA Journal. **2018**, 16 (10) :5436, 31 pp. <https://doi.org/10.2903/j.efsa.2018.5436>
4. Akrivou, A., Georgopoulou, I., Papachristos, D., P., Milonas, P., G., Kriticos, D., J. Potential global distribution of *Aleurocanthus woglumi* considering climate change and irrigation. PLoS ONE, **2021**, 16(12): e0261626. <https://doi.org/10.1371/journal.pone.0261626>
5. Porcelli, F. First record of *Aleurocanthus spiniferus* (Homoptera: Aleyrodidae) in Puglia, Southern Italy. EPPO Bulletin, **2008**, 38, 516– 518.
6. Nugnes, F., Laudonia, S., Jesu, G., Jansen, M., G., M., Bernardo, U., Porcelli, F. *Aleurocanthus spiniferus* (Hemiptera: Aleyrodidae) in Some European Countries: Diffusion, Hosts, Molecular Characterization, and Natural Enemies. Insects, **2020**, 11, 42. <https://doi.org/10.3390/insects11010042>

7. Šimala, M., Masten Milek, T. First record of the orange spiny whitefly, *Aleurocanthus spiniferus* Quaintance, 1903 (Hemiptera: Aleyrodidae), in Croatia. Plant Zbornik predavanj in referatov 11. Slovenskega posvetovanja o varstvu rastlin z mednarodno udeležbo Bled, d. (Plant Protection Society of Slovenia). **2013**, 5.–6
8. Radonjic, S., Hrcic, S., Malumphy, C. First Record of *Aleurocanthus spiniferus* (Quaintance) (Hemiptera: Aleyrodidae) in Montenegro. CRA-Research Centre for Agrobiolology and Pedology, **2014**, 97, 141– 154.
9. EFSA (European Food Safety Authority), Schrader G, Camilleri M, Ciubotaru RM, Diakaki M and Vos S, Pest survey card on *Aleurocanthus spiniferus* and *Aleurocanthus woglumi*. EFSA supporting publication, **2019**, EN-1565. 17pp. doi:10.2903/sp.efsa.2019.EN-1565
10. Uesugi, R., Yara, K., Sato, Y. Changes in population density of *Aleurocanthus camelliae* (Hemiptera: Aleyrodidae) and parasitism rate of *Encarsia smithi* (Hymenoptera: Aphelinidae) during the early invasion stages. Appl. Entomol. Zool. **2016**, 51, 581–588, <https://doi.org/10.1007/s13355-016-0434-3>
11. Nguyen, R., Brasil, J., R., Poucher, C. Population density of the citrus blackfly, *Aleurocanthus woglumi* Ashby (Homoptera: Aleyrodidae), and its parasites in urban Florida in 1979-81. Environmental Entomology, **1983**, 12: 878-884.
12. Dowell, R.V. Factors affecting the field effectiveness of *Encarsia opulenta* (Hymenoptera: Aphelinidae), a parasitoid of citrus blackfly, *Aleurocanthus woglumi* (Homoptera: Aleyrodidae). Trop. Agr. **1989**, 66: 110–112.
13. Lopez, V., F., Kairo, M., T., Pollard, G., V., Pierre, C., Commodore, N., Dominique, D., ~~2009~~. Post-release survey to assess impact and potential host range expansion by *Amitus hesperidum* and *Encarsia perplexa*, two parasitoids introduced for the biological control of the citrus blackfly, *Aleurocanthus woglumi* in Dominica. BioControl, **2009**, 54: 497–503 doi 10.1007/s10526-008-9207-4.
14. Yamashita, K., Kasai, A., Suzuki, Y., Yoshiyasu, Y. Population dynamics of the camellia spiny whitefly, *Aleurocanthus camelliae* (Hemiptera: Aleyrodidae), in tea fields during the early phase of invasion into Kyoto, Japan. Applied Entomology and Zoology, **2016**, 51, 117– 124.
15. Anonymous, 1974. New States records orange spiny black fly, *Aleurocanthus spiniferus* (Quaintance). Hawaii Co-operative Economic Insect Report 24, 585 (R.A.E. Services A, **1974**, (1975) 63 (781).
16. Culliney, T., W., Nagamine, W., T., Teramoto, K., K. Introductions for Biological Control in Hawaii 1997-2001. Proc. Hawaii. Entomol. Soc. **2003**, 36, 145-153. https://scholarspace.manoa.hawaii.edu/bitstream/10125/112/1/36_145-153.pdf.
17. Nakao, H., K., Funasaki, G., Y. Introductions for biological control in Hawaii: 1975 and 1976. Proc. Hawaii. Entomol. Soc. **1979**, 23:125–128
18. Heu, R., A., Nagamine, W., T. Citrus Blackfly *Aleurocanthus woglumi* Ashby (Homoptera: Aleyrodidae). New Pest Advisory, **2001**, No. 99-03.
19. Rossato, V. Ocorrência de parasitoides de *Aleurocanthus woglumi* Ashby, 1903 (Hemiptera: Aleyrodidae) e seu parasitismo por *Cales noacki* Howard, 1907 (Hymenoptera: Aphelinidae) nos municípios de Belém, Capitão Poço e Irituia no estado do Pará. Dissertação de Mestrado, Universidade Federal Rural da Amazônia, Belém/PA. **2007**, 40 pp.
20. MacGown, M., W., Nebeker, T., E. Taxonomic review of *Amitus* (Hymenoptera: Proctotrupoidae, Platygasteridae). Can. Ent. **1978**, 110: 275-283.
21. Viggiani, G., Mazzone, P. The *Amitus* Hald. (Hym. Platygasteridae) of Italy, with description of three new species. Bollettino de Laboratorio di entomologia agrarian “Filippo Silvestri” Portici. **1978**, (39):59-69.
22. Huang, J., Polaszek, A. A revision of the Chinese species of *Encarsia* Forster (Hymenoptera: Aphelinidae): parasitoids of whiteflies, scale insects and aphids (Hemiptera: Aleyrodidae, Diaspididae, Aphidoidea). Journal of Natural History, **1998**, 32: 1825-1966.
23. Nguyen, R. *Amitus hesperidum* (Hymenoptera: Platygasteridae), a parasite of the citrus blackfly (*Aleurocanthus woglumi*). Florida Department of Agricultural Consumer Services, Division Plant Industry, Entomolgy Circular.1988, 311:1–2. https://entnemdept.ufl.edu/creatures/beneficial/amitus_hesperidum.htm
24. Noyes, J.S. 2019. Universal Chalcidoidea Database. World Wide Web electronic publication. <http://www.nhm.ac.uk/chalcidoids>
25. Noyes, J., S. Collecting and preserving chalcid wasps (Hymenoptera: Chalcidoidea). Journal of Natural History, **1982**, 16 (3): 315-334
26. Noyes, J., S. Chapter 2.7.2.5. Chalcid parasitoids. (In: Rosen, D. [editor] - The Armored Scale Insects. Their Biology, Naural Enemies and Control.) World Crop Pests, **1990**, 4B:247-262.
27. Hebert, P.D., Cywinska, A., Ball, S.L., deWaard, J.R. Biological identifications through DNA barcodes. Proc. Biol. Sci. **2003**, 270, 313–321. <https://doi.org/10.1098/rspb.2002.2218>
28. Pentinsaari, M., Salmela, H., Mutanen, M., Roslin, T. Molecular evolution of a widely-adopted taxonomic marker (COI) across the animal tree of life. Sci. Rep. **2016**, 6, 35275. <https://doi.org/10.1038/srep35275>

29. Folmer, O.; Black, M.; Hoeh, W.; Lutz, R.; Vrijenhoek, R. DNA primers for amplification of mitochondrial cytochrome c oxidase subunit I from diverse metazoan invertebrates. *Mol Mar Biol Biotechnol*, 3(5), 294-299. PMID: 1994, 7881515
30. Downton, M., Austin, A.D., Simultaneous analysis of 16S, 28S, COI and morphology in the Hymenoptera: Apocrita—evolutionary transitions among parasitic wasps. *Biol. J. Linn. Soc.* **2001**, 74, 87- 111. <https://doi.org/10.1111/j.1095-8312.2001.tb013>.

Disclaimer/Publisher's Note: The statements, opinions and data contained in all publications are solely those of the individual author(s) and contributor(s) and not of MDPI and/or the editor(s). MDPI and/or the editor(s) disclaim responsibility for any injury to people or property resulting from any ideas, methods, instructions or products referred to in the content.