

Figure S1. Box plot showing the intensity at the 1454 cm⁻¹ peak in the average Raman spectra of *engulfed cell visible* (pink), *big* (blue), and *small* (green) vacuoles. The Mann-Whitney U test shows significant differences in the intensity between engulfed cell visible and small ($p < 0.01$) and between big and small ($p < 0.05$).

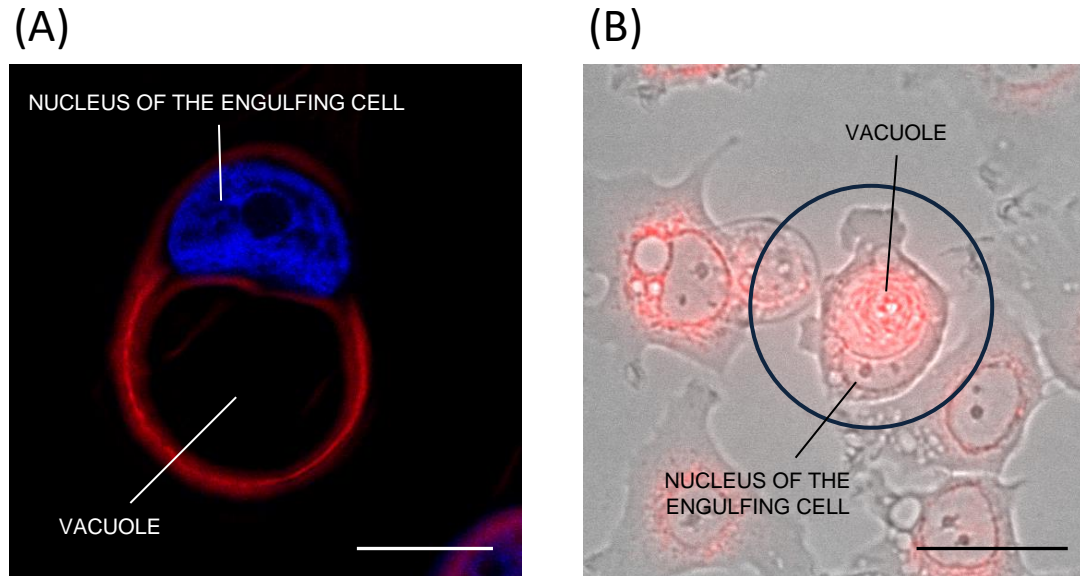


Figure S2. Representative images of senescent MCF7 vacuole-holding cells stained for lysosomes with Lysotracker. The picture (A) was obtained with a confocal microscope in fluorescent mode. In blue (DAPI staining) is the engulfing cell nucleus. Scale bar: 25 μm . The picture (B) was obtained in brightfield mode. The circle indicates the engulfing cell. Scale bar: 50 μm .