

Article

Not peer-reviewed version

# MAGE-A10 protein expression in advanced high grade serous ovarian cancer is associated with resistance to first line platinum-based chemotherapy

[Nataša Lisica Šikić](#), [Branka Petrić Miše](#), [Snježana Tomić](#), [Giulia Spagnol](#), [Luka Matak](#)<sup>\*</sup>, Antonio Juretić, Giulio Spagnoli

Posted Date: 24 August 2023

doi: 10.20944/preprints202308.1681.v1

Keywords: ovarian cancer; MAGE A-10; NY-ESO-1; immunohistochemistry; response to platinum-based chemotherapy; platinum sensitivity; prognosis



Preprints.org is a free multidiscipline platform providing preprint service that is dedicated to making early versions of research outputs permanently available and citable. Preprints posted at Preprints.org appear in Web of Science, Crossref, Google Scholar, Scilit, Europe PMC.

Copyright: This is an open access article distributed under the Creative Commons Attribution License which permits unrestricted use, distribution, and reproduction in any medium, provided the original work is properly cited.

## Article

# MAGE-A10 Protein Expression in Advanced High Grade Serous Ovarian Cancer is Associated with Resistance to First Line Platinum-Based Chemotherapy

Nataša Lisica Šikić<sup>1</sup>, Branka Petrić Miše<sup>2</sup>, Snježana Tomić<sup>3</sup>, Giulia Spagnol<sup>4</sup>, Luka Matak<sup>5,\*</sup>, Antonio Juretić<sup>6</sup> and Giulio Spagnoli<sup>7</sup>

<sup>1</sup> Department of Pathology, Forensic Medicine and Cytology, General Hospital Zadar, Zadar, Croatia; nlisicasikic@gmail.com (N.L.S.)

<sup>2</sup> Department of Oncology, Clinical Hospital Center Split, School of Medicine, University of Split, Split, Croatia; brapemi@gmail.com (B.P.M.)

<sup>3</sup> Department of Pathology, Forensic Medicine and Cytology, Clinical Hospital Center Split, School of Medicine, University of Split, Split, Croatia; snjezana.tomic17@gmail.com (S.T.)

<sup>4</sup> Department of Women and Children's Health, Clinic of Gynecology and Obstetrics, University of Padua, Padua, Italy; giuliaspagnol.ts@gmail.com (G.S.)

<sup>5</sup> Department of Obstetrics and Gynecology, General Hospital Zadar, Zadar, Croatia; lmatak.gin@gmail.com (L.M.)

<sup>6</sup> Department of Oncology, Clinical Hospital Center Zagreb, University of Zagreb, Zagreb, Croatia; ajuretic@kdb.hr (A.J.)

<sup>7</sup> Istituto CNR "Translational Pharmacology", Rome, Italy; gcspagnoli@gmail.com (G.S.)

\* Correspondence: lmatak.gin@gmail.com

**Abstract:** Ovarian cancer has a dismal prognosis. Standard treatment following surgery relies on platinum-based chemotherapy. However, sizeable percentages of patients are unresponsive. Identification of markers predicting response to chemotherapy might help select eligible patients while sparing unresponsive ones treatment-associated toxicity. Cancer/testis antigens (CTA) are expressed by healthy germ cells and malignant cells of diverse histological origin. This expression profile identifies them as attractive targets of cancer immunotherapies. We analyzed correlations between expression of MAGE-A10 and New York esophageal-1 cancer (NY-ESO-1) CTAs at protein level and effectiveness of platinum-based chemotherapy in patients with advanced-stage high-grade serous ovarian carcinoma (HGSOC). MAGE-A10 and NY-ESO-1 protein expression was analyzed by immunohistochemistry (IHC) in formalin-fixed, paraffin-embedded samples from 93 patients with advanced-stage HGSOC treated at our institutions between January 1996 and December 2013. Correlation between expression of these markers and response to platinum-based chemotherapy, evaluated according to RECIST 1.1 criteria, platinum sensitivity, measured as platinum free interval (PFI), progression free (PFS) and overall survival (OS) was explored. MAGE-A10 protein expression predicts unresponsiveness to platinum-based chemotherapy ( $p=0.005$ ), poor platinum sensitivity ( $p<0.001$ ), and poor PFS ( $p<0.001$ ) and OS ( $p<0.001$ ). Multivariate analysis identifies MAGE-A10 protein expression as independent predictor of poor platinum sensitivity ( $p=0.005$ ) and shorter OS ( $p<0.001$ ). Instead, no correlation was observed between NY-ESO-1 protein expression and response to platinum-based chemotherapy ( $p=0.832$ ), platinum sensitivity ( $p=0.168$ ), PFS ( $p=0.126$ ) and OS ( $p=0.335$ ). MAGE-A10 protein expression reliably identifies advanced-stage HGSOC unresponsive to platinum-based chemotherapy. Targeted immunotherapy could represent an important alternative therapeutic option in these cancers.

**Keywords:** ovarian cancer; MAGE A-10; NY-ESO-1; immunohistochemistry; response to platinum-based chemotherapy; platinum sensitivity; prognosis

## 1. Introduction

Ovarian cancer is the most lethal of all gynecologic malignant tumors. It is often diagnosed at a late stage and 5-year overall survival (OS) rate is around 45% [1].

The international standard of care for women with advanced ovarian cancer is represented by surgical resection, which is usually followed by platinum-based chemotherapy. Platinum-based drug combinations are also included in second-line chemotherapy protocols for the treatment of patients with platinum-sensitive, but relapsing ovarian cancers [2].

However, in 20-40% of patients platinum-based chemotherapy is ineffective [2] and salvage chemotherapy administered to these patients is also frequently characterized by low response rates.

A multiplicity of molecular mechanisms have been suggested to underlie resistance to platinum-based treatment. They might include altered expression of platinum transporter proteins, overexpression of detoxifying compounds, and enhanced DNA repair processes (3).

On the other hand, administration of platinum-based treatments has widely been shown to be frequently accompanied by severe side effects, including nephrotoxicity, neurotoxicity, and, most importantly, myelosuppression, resulting in anemia, reduction of platelet counts and impaired immune responses (4).

Identification of markers of potential clinical use predicting resistance to platinum-based chemotherapy is urgently needed, to spare unnecessary toxicity to patients with unresponsive cancers, and to envisage alternative treatments of these malignancies.

In previous studies (5), we have shown that high E-cadherin expression, as detectable by standard immunohistochemistry (IHC) techniques, reliably identifies advanced high grade serous ovarian cancers (HGSOC) responding to platinum-based chemotherapy. These results critically contribute to the selection of patients taking advantage of these treatments, but fail to provide clues favoring the development of alternative therapies of potential interest for unresponsive patients.

Notably, immunotherapies based on immunological checkpoint blockade (ICB) are known to be poorly effective in HGSOC (6), possibly due to a relatively low mutational burden (7), resulting in limited generation of neo-antigens (8).

More recently, adoptive immunotherapies, based on the transfer of gene engineered T cells expressing chimeric antigen receptors (CAR) have been proposed for the treatment of advanced ovarian cancers and associated peritoneal carcinomatosis (9). However, an important obstacle for the development of adequate protocols is represented by the relative paucity of tumor "specific" markers expressed by HGSOC cells, significantly increasing the risk of "on target, off tumor" side effects (9).

Cancer-testis antigens (CTA) are a family of proteins highly expressed in germinal cells and cancers of different histological origin (10-12) including ovarian cancers (13)

Members of the melanoma-associated antigen-A (MAGE-A) CTA subfamily are overexpressed in many cancers and have been suggested to be involved in tumor progression, metastasis, and resistance to treatment, and to be associated with poor prognosis also in ovarian cancers (13-14). Remarkably, MAGE-A10 is one of the most immunogenic CTA, and specific cellular immune responses have been observed in peripheral blood of healthy donors and patients with cancer (15, 16).

New York esophageal squamous cell carcinoma-1 (NY-ESO-1) is another well-characterized CTA, expressed in numerous malignancies including ovarian cancers (17, 18). Notably, specific humoral and cellular immune responses have repeatedly been reported, and anti-NY-ESO-1 vaccination has been proposed for ovarian cancer treatment (18).

We hypothesized that targeted immunotherapies could provide innovative therapeutic options for patients with platinum-resistant HGSOC. To begin to explore this issue, in this study we assessed the expression of highly immunogenic MAGE-A10 and NY-ESO-1 CTAs, at the protein level, in advanced stage HGSOC and we investigated its correlation with responsiveness to first-line platinum-based chemotherapy.

## 2. Materials and Methods

### 2.1. Study Design

This study is based on an updated analysis of a previously investigated cohort of patients (5), focusing on 93 patients with histologically confirmed FIGO III and IV HGSOE (19) treated at the Clinical Hospital Centre Split and General Hospital Zadar, Croatia, between January 1996 and December 2013. All patients had undergone debulking surgery followed by first line platinum-based chemotherapy. Inclusion in the study required availability of primary tumor specimens collected at initial laparotomy and full medical data.

Patients were classified according to FIGO stage (19), tumor grade (20), residual tumor after primary surgery (21), age of patients, chemotherapy regimens and number cycles of chemotherapy, as previously described (5). Response rates, progression free (PFS) and overall survival (OS) data were obtained from histopathological reports and patients' medical records.

### 2.2. Chemotherapy Treatment

A large majority of patients (n=83, 89%) received paclitaxel plus platinum combinations. In particular, 81 (87%) patients received paclitaxel plus cisplatin/carboplatin (TC) every three weeks or as dose-dense (DD) TC and 2 (2%) patients received cisplatin, gemcitabine and paclitaxel (TCG). All other patients (n=10, 11%), received cisplatin-based chemotherapy without paclitaxel. In particular, 7 (8%) patients were administered cisplatin, doxorubicin and cyclophosphamide (CAP), 2 (2%) cisplatin and cyclophosphamide (CC) and 1 (1%) patient received cisplatin only (5).

Among all patients, 60 (65%) were administered 6 cycles of chemotherapy and 33 (35%) received more than 6 cycles of treatment. Response to platinum-based chemotherapy was defined according to RECIST 1.1 criteria (22).

Sensitivity to treatment was defined according to platinum free interval (PFI) as platinum-refractory, platinum-resistant and platinum-sensitive according to standard criteria (2, 5, 23).

The Ethical Committee for Biomedical Research of the Clinical Hospital Split and School of Medicine approved this research to be in compliance with the Helsinki Declaration (reference number 49-1/06).

### 2.3. Immunohistochemical Staining

Immunohistochemistry (IHC) was performed as previously detailed (24) on 4 µm thick sections from paraffin embedded tissues, using primary reagents, monoclonal antibodies (mAb) 3GA11 (anti MAGE-A10) and D8.38 (anti NY-ESO-1) (25, 26) on an automated system Ventana BenchMark Ultra autostainer (Roche, Tucson, AZ, USA). Sections of normal human testes served as positive controls. Cells were considered positive if staining was detectable in either the cytoplasm or the nuclei, or both, regardless of intensity. Percentages of positive tumor cells were evaluated by two pathologists. The cut-off point for positive tumor classification was any convincing cytoplasmic/nuclear expression in 10% tumor cells.

### 2.4. Statistical Analysis

Correlations between clinical- pathological parameters and MAGE-A10 or NY-ESO-1 positivity, as defined above, were analyzed by using Chi-squared tests. Patients survival was evaluated by using Kaplan-Meier survival curves, and differential survival was investigated by using Log-rank tests. Multivariate Cox's proportional hazard's analysis was used to explore the potential ability of MAGE-A10 or NY-ESO-1 protein expression to predict responsiveness to platinum-based chemotherapy. In all cases  $\leq 0.05$  p values were considered statistically significant. All analyses were conducted by using SPSS version 16.0 software package.

### 3. Results

#### 3.1. Demographics and Clinical-Pathological Characteristics

A total of 93 patients with advanced HGSOc were included in the study. In particular, tumors from 72 patients (77%) were of FIGO III stage and tumors from 21 patients (23%) were of FIGO IV stage. Median age of patients was 57 years (IQR: 37-79 years). Median follow-up was of 60 (IQR: 4-175) months. Clinical-pathological characteristics of these patients, including FIGO stage, surgery outcome, chemotherapy regimens and number of treatment cycles, response to treatment, PFS and OS, as obtained from histopathological reports and patient medical records, are reported in Table 1.

**Table 1.** Demographics and clinical-pathological characteristics.

			Disease status at the end of follow-up			
			Total	Dead	Alive	Alive
			(N=93)	(N=67)	with recurrence (N=9)	without recurrence (N=17)
Age (median, IQR)			57(37-79)	59(37-79)	62(49-75)	54(44-76)
PFS (median, IQR)			16(4-175)	14(4-109)	22(8-42)	37(16-175)
OS (median, IQR)			40(7-175)	36(7-144)	44(34-83)	69(37-175)
FIGO stage (N, %)	III		72(77)	50(75)	6	16(94)
	IV		21(23)	17(25)	3	1(6)
Surgery (N, %)	Optimal		14(15)	0	4	10(15)
	Suboptimal		75(81)	9	12	54(80)
	Unknown		4(4)	0	1	3(4)
Chemotherapy cycles (N, %)	<6		60(64)	5	16	39(58)
	>6		33(36)	4	1	28(42)
Response to chemotherapy (N, %)	CR		62(66,7)	40(59,7)	6	16
	PR		1(11,8)	8(11,9)	2	1
	SD		5(5,4)	5(7,5)	0	0
	PD		15(16,1)	14(20,9)	1	0

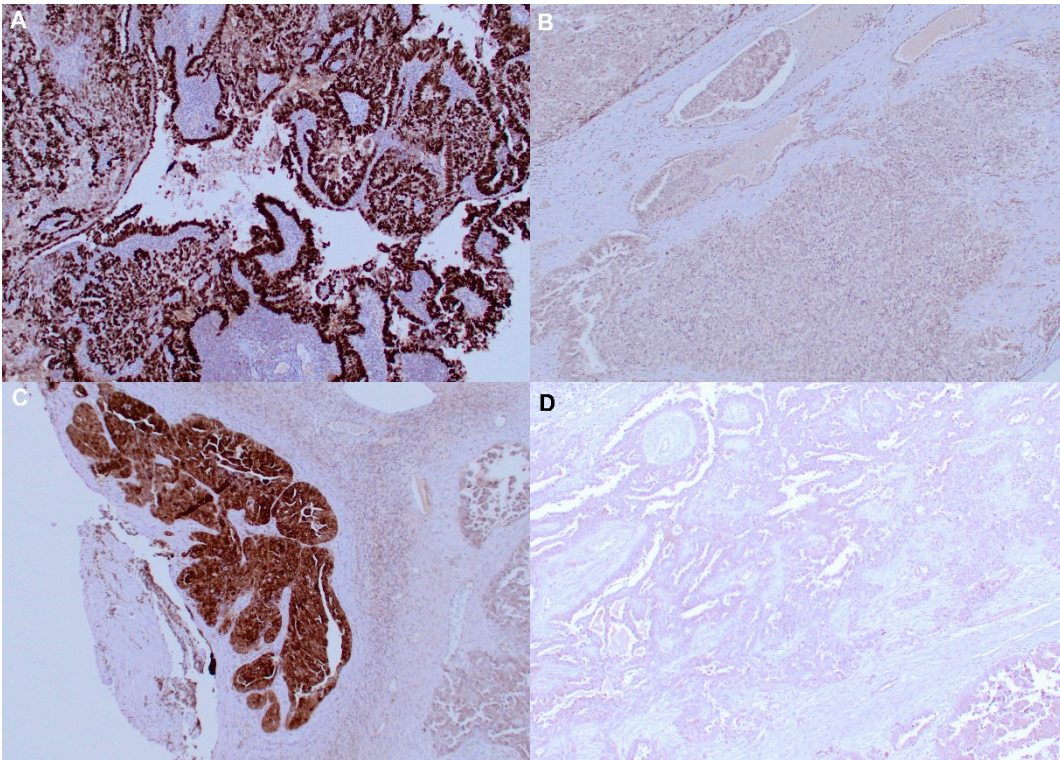
N: number; PFS: progression free survival; OS: overall survival; CR: complete response; PR: partial response; SD: stable disease; PD: progressing disease.

A total of 67 patients (72%) had died and 26 (28%) were alive at the end of the follow-up (2016). Out of alive patients, 9 (35%) had developed recurrence despite ongoing adjuvant treatment, and 17 (65%) remained without disease recurrence.

#### 3.2. Immunohistochemistry

As previously reported (24), MAGE-A10 immunostaining was mainly detectable in nuclei of malignant cells, whereas NY-ESO-1 specific mAb mainly stained cytoplasm (Figure 1). All in all, MAGE-A10 immunostaining was positive in 47 (50%) advanced HGSOc, and NY-ESO-1 in 33 tumors (35%). Co-expression of both CTA was observed in 23 (24.7%) cancers.





**Figure 1.** MAGE-A10 and NY ESO protein detection by IHC staining in ovarian tumor samples. (A) Positive MAGE-A10-specific IHC staining; (B) Negative MAGE-A10-specific IHC staining; (C) Positive NY ESO-specific IHC staining; (D) Negative NY ESO-specific IHC staining. Original magnification ×200.

3.3. Response to Chemotherapy

All patients were administered cis-platinum in combination with additional chemotherapeutics in ≥6 cycles of treatment (see above). A full analysis of responsiveness to treatment has previously been reported (5). Briefly, according to RECIST 1.1 criteria, 62 (66.7%) patients showed a CR, 11 (11.8%) a PR, and in 5 (5.4%) patients SD represented the best response to treatment. In contrast, 15 (16,1%) patients were unresponsive and PD was evident (Table 1).

Regarding sensitivity to first-line platinum-based chemotherapy, defined as PFI, tumors from 58 (62.4%) patients appeared to be sensitive, 23 (24.7%) resistant, and 12 (12.9%) refractory.To facilitate further analyses, patients with resistant and refractory disease were combined into one group of “resistant” subjects.

Median PFS was of 16 months (IQR range 4-175 months) and median OS was of 40 months (IQR range 7-175 months)(5).

3.4. Correlation between CTA Expression and Response to Chemotherapy

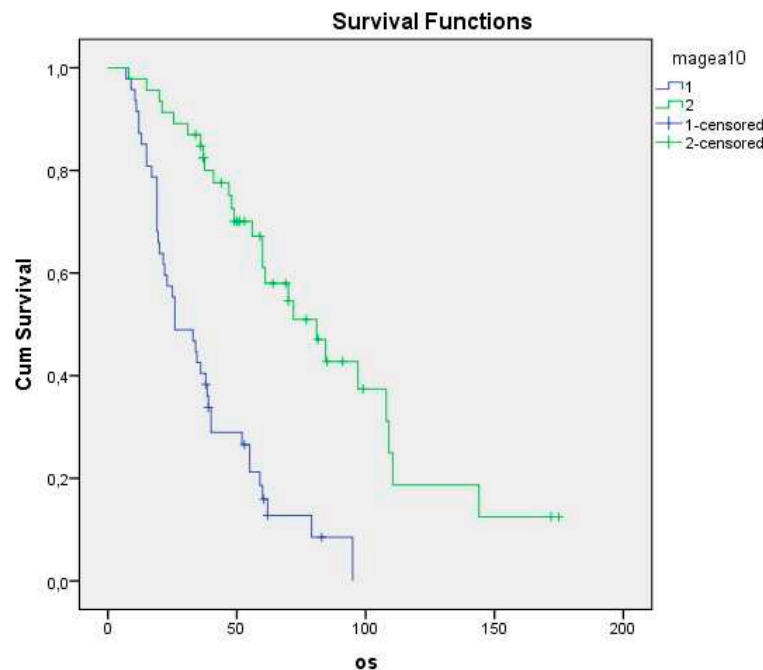
MAGE-A10 expression appeared to significantly predict unresponsiveness to first line platinum-based chemotherapy (p=0.005) and poor sensitivity to platinum treatment (p<0.001) (Table 2). Accordingly, MAGE-A10 expression in tumor cells was associated with significantly poorer PFS (p<0.001) and OS (p<0.001) (Figure 2).

**Table 2.** Correlation between CTA expression and response to chemotherapy.

		N(%)			
		Response to chemotherapy			
		CR+PR=OR	SD+PD	χ <sup>2</sup>	p
MAGE A-10	Positive	30(41)	17(85)	10.4	0.001
	Negative	43(59)	3(15)		

NY-ESO-1	Positive	25(34)	8(40)	0.045	0.832
	Negative	48(66)	12(60)		
Chemotherapy sensitivity	Sensitive	58(80)	0	39	<0.001
	Resistant	15(20)	20(100)		

N: number; PFS: progression free survival; OS: overall survival; CR: complete response; PR: partial response; SD: stable disease; PD: progressing disease.



**Figure 2.** Overall survival and MAGE-A10 expression.

Multivariate analysis showed that, together with patients' age and tumor stage, MAGE-A10 expression by tumor cells is an independent predictor of unresponsiveness to first-line platinum treatment ( $p=0.005$ ) (Table 3).

On the same line, multivariate analysis of sensitivity to platinum, evaluated as PFI, showed that MAGE-A10 expression in tumor cells independently predicted poor sensitivity to treatment (Table 4)

Instead, no correlation was observed between NY-ESO-1 and response to first line platinum-based chemotherapy ( $p=0.832$ ), platinum sensitivity ( $p=0.168$ ) and patients' PFS ( $p=0.126$ ) or OS ( $p=0.335$ ).

**Table 3.** Multivariate analysis of the age of patients, FIGO stage and expression of MAGE A-10 on objective response on first-line chemotherapy in 93 patients with advanced-stage high-grade serous ovarian cancer.

	HR (95%CI)	p
Age	4.2 (1.2-14.6)	0.025
Stage	5.7 (1.6-21)	0.007
MAGE A10	7.4 (1.8-29.8)	0.005

**Table 4.** Multivariate analysis of the impact of FIGO stage, chemotherapy cycles and expression of MAGE A-10 on chemotherapy sensitivity in 93 patients with advanced-stage HGSOc.

	HR (CI 95%)	p
Stage	3.1 (1.0-9.9)	0.050
MAGE A10	6 (2.2-16.4)	<0.001
Chemotherapy cycles	1.8 (0.65-4.8)	0.265

4. Discussion

Advanced ovarian cancers are characterized by poor prognosis. Following surgery, treatment mainly relies on platinum-based chemotherapy. Yet, sizeable percentages of patients do not respond to treatment, and molecular mechanisms underlying unresponsiveness are largely unclear [2–4,27–29].

Markers associated with sensitivity of ovarian cancer cells to treatment have been identified by us and others. In particular, E cadherin downregulation and overexpression of epithelial-to-mesenchymal transition (EMT) genes are known features of unresponsive tumors (5, 29). Accordingly, enhanced tumor cell de-differentiation is known to underlie resistance to different types of chemotherapy in a variety of malignancies (30), thus suggesting that treatments based on administration of conventional anti-cancer compounds might be poorly effective.

On the other hand, notably, immunotherapy based on immunological checkpoint blockade also appears to be largely ineffective in ovarian cancers.

Innovative approaches are urgently needed.

CTA are a large family of tumor associated antigens expressed in healthy germ cells and in a variety of human cancers (11-14). As such, they do represent attractive candidates for cancer immunotherapy. In particular, MAGE-A10 and NY-ESO-1 are highly immunogenic CTA and specific immune responses have repeatedly been observed in patients bearing cancers expressing these antigens (14-17).

Physiological functions of CTA are by and large still unclear. Data on MAGE-A, the best studied CTAs, suggests that they are involved in early oncogenesis, and in the regulation of cell cycle progression and cellular apoptosis [10]. Expression MAGE-A and NY-ESO-1 proteins has previously been shown to be associated with poor prognosis by us and others in a variety of cancers of different histological origin [11–14,31]. Moreover, interestingly, overexpression of CTA genes has also been suggested to correlate with resistance to chemotherapy in head and neck cancers, in medulloblastoma [32–35]. Intriguingly, defined established tumor cell lines expressing MAGE-A CTA have been reported to be platinum resistant [36].

Regarding ovarian cancers, expression of MAGE-A4, MAGE-A9, MAGE-A10 and NY-ESO-1 proteins in tumor cells has previously been reported to be associated with poor prognosis [14,37–39], but no data regarding sensitivity to chemotherapy treatment have been provided.

Here we report that MAGE-A10 protein expression in ovarian cancer surgical specimens reliably predicts unresponsiveness to first line platinum-based chemotherapy and poor sensitivity to platinum treatment. Accordingly, consistent with previous reports (14), MAGE-A10 protein expression is associated to significantly poorer PFS and OS. Most importantly, multivariate analysis of our data indicates that MAGE-A10 protein expression qualifies as predictor of resistance to treatment independently from age et FIGO stage.

In contrast, we did not observe any correlation between NY-ESO-1 protein expression and response to first-line platinum-based chemotherapy, platinum sensitivity or patients’ PFS and OS.

To the best of our knowledge, this is the first study evaluating the impact of MAGE-A10 protein expression on HGSOc chemosensitivity. Therefore, MAGE-A10 could represent a novel biomarker identifying a more aggressive phenotype. Further analysis could be made in patients with secondary cytoreduction and contribute to clinical decisions regarding the implementation of radical surgery procedures [40].



Limitations of our report should be acknowledged. They include a small number of patients and a relatively short follow-up time. Nevertheless, although validation and mechanistic studies are warranted, our results could be of high clinical relevance. First, assessment of MAGE-A10 protein expression might help to identify patients with platinum-resistant tumors, thereby sparing them chemotherapy-associated adverse effects. On the other hand, considering the high immunogenicity of MAGE-A10, it is tempting to speculate that immunotherapy specifically targeting this CTA, based on vaccination or adoptive immunotherapy with engineered T cells expressing a MAGE-A10-specific HLA-restricted T-cell receptor [41] might powerfully complement platinum-based chemotherapy, by eliminating resistant cells. Admittedly, a similar therapeutic approach should be considered cautiously, because, so far, adoptive immunotherapy has shown relatively modest results in the treatment of solid tumors (42). Moreover, most worryingly, anti-MAGE-A3 adoptive immunotherapy has been reported to be associated with neurological toxicity (43). However, intraperitoneal administration of T cells engineered to express a MAGE-A10-specific HLA-restricted T-cell receptor might prove of particular interest in cases of ovarian cancer-associated peritoneal carcinomatosis (44), typically characterized by a paucity of therapeutic options.

**Author Contributions:** “Conceptualization, Nataša Lisica Šikić.; methodology, Branka Petrić Miše, Nataša Lisica Šikić; software, Snježana Tomić, Nataša Lisica Šikić; validation, Antonio Juretić, Giulio Spagnoli, Nataša Lisica Šikić and Luka Matak.; formal analysis, Snježana Tomić, Nataša Lisica Šikić; investigation, Nataša Lisica Šikić.; resources, Giulia Spagnol, Nataša Lisica Šikić; data curation, Antonio Juretić, Nataša Lisica Šikić; writing—original draft preparation, Luka Matak, Nataša Lisica Šikić; writing—review and editing, Giulia Spagnol, Nataša Lisica Šikić; visualization, Branka Petrić Miše, Nataša Lisica Šikić; supervision, Giulio Spagnoli, Nataša Lisica Šikić; project administration, Branka Tomić, Nataša Lisica Šikić; funding acquisition, Giulio Spagnoli, Nataša Lisica Šikić All authors have read and agreed to the published version of the manuscript.”

**Funding:** This research received no external funding.

**Institutional Review Board Statement:** The research was approved by the Ethics Committee of Zadar General Hospital (under number 01-235/11-10/11).

**Informed Consent Statement:** All the patients gave verbal consent for the treatment since they were unable to give their written consent because of isolation precautions and the Ethics Committee waived the requirement. All investigations were conducted according to the principles expressed in the Declaration of Helsinki.

**Data Availability Statement:** Data available upon request from the corresponding author.

**Conflicts of Interest:** The authors declare no conflict of interest.

## References

1. SEER Cancer Statistics Factsheets: Ovary Cancer. National Cancer Institute. Bethesda, MD. Available online: <http://seer.cancer.gov/statfacts/html/ovary.html> (accessed on 10 March 2023)
2. Wilson, M.K.; Pujade-Lauraine, E.; Aoki, D.; Mirza, M.R.; Lorusso, D.; Oza, A.M.; du Bois, A.; Vergote, I.; Reuss, A.; Bacon, M.; et al. Fifth Ovarian Cancer Consensus Conference of the Gynecologic Cancer InterGroup: recurrent disease. *Ann Oncol.* 2017, 28(4), 727–732. doi: 10.1093/annonc/mdw663. PMID: 27993805; PMCID: PMC6246494.
3. Dasari S, Tchounwou PB. Cisplatin in cancer therapy: molecular mechanisms of action. *Eur J Pharmacol.* 2014 Oct 5;740:364–78. doi: 10.1016/j.ejphar.2014.07.025. Epub 2014 Jul 21. PMID: 25058905; PMCID: PMC4146684.
4. Zhou, J.; Kang, Y.; Chen, L.; Wang, H.; Liu, J.; Zeng, S.; Yu, L. The Drug-Resistance Mechanisms of Five Platinum-Based Antitumor Agents. *Front Pharmacol.* 2020, 11, 343. doi: 10.3389/fphar.2020.00343. PMID: 32265714; PMCID: PMC7100275.
5. Miše BP, Telesmanić VD, Tomić S, Šundov D, Čapkun V, Vrdoljak E. Correlation Between E-cadherin Immunoexpression and Efficacy of First Line Platinum-Based Chemotherapy in Advanced High Grade Serous Ovarian Cancer. *Pathol Oncol Res.* 2015 Apr;21(2):347–56. doi: 10.1007/s12253-014-9827-1. Epub 2014 Aug 11. PMID: 25108408.
6. Pawłowska A, Rekowski A, Kuryło W, Pańcyszyn A, Kotarski J, Wertel I. Current Understanding on Why Ovarian Cancer Is Resistant to Immune Checkpoint Inhibitors. *Int J Mol Sci.* 2023 Jun 29;24(13):10859. doi: 10.3390/ijms241310859. PMID: 37446039; PMCID: PMC10341806.
7. Alexandrov LB, Nik-Zainal S, Wedge DC, Aparicio SA, Behjati S, Biankin AV, et al. Signatures of mutational processes in human cancer. *Nature.* 2013 Aug 22;500(7463):415–21. doi: 10.1038/nature12477.

- Epub 2013 Aug 14. Erratum in: *Nature*. 2013 Oct 10;502(7470):258. Imielinski, Marcin [corrected to Imielinski, Marcin]. PMID: 23945592; PMCID: PMC3776390.
8. Juretic A, Jürgens-Göbel J, Schaefer C, Noppen C, Willmann TE, Kocher T, Zuber M, Harder F, Heberer M, Spagnoli GC. Cytotoxic T-lymphocyte responses against mutated p21 ras peptides: an analysis of specific T-cell-receptor gene usage. *Int J Cancer*. 1996 Nov 15;68(4):471-8. doi: 10.1002/(SICI)1097-0215(19961115)68:4<471::AID-IJC12>3.0.CO;2-8. PMID: 8945618.
  9. Domínguez-Prieto V, Qian S, Villarejo-Campos P, Meliga C, González-Soares S, Guijo Castellano I, Jiménez-Galanes S, García-Arranz M, Guadalajara H, García-Olmo D. Understanding CAR T cell therapy and its role in ovarian cancer and peritoneal carcinomatosis from ovarian cancer. *Front Oncol*. 2023 May 18;13:1104547. doi: 10.3389/fonc.2023.1104547. PMID: 37274261; PMCID: PMC10233107.
  10. Simpson AJ, Caballero OL, Jungbluth A, Chen YT, Old LJ. Cancer/testis antigens, gametogenesis and cancer. *Nat Rev Cancer*. 2005 Aug;5(8):615-25. doi: 10.1038/nrc1669. PMID: 16034368.
  11. Juretic A, Spagnoli GC, Schultz-Thater E, Sarcevic B. Cancer/testis tumour-associated antigens: immunohistochemical detection with monoclonal antibodies. *Lancet Oncol*. 2003 Feb;4(2):104-9. doi: 10.1016/s1470-2045(03)00982-3. PMID: 12573352.
  12. Poojary, M.; Jishnu, P.V.; Kabekkodu, S.P. Prognostic Value of Melanoma-Associated Antigen-A (MAGE-A) Gene Expression in Various Human Cancers: A Systematic Review and Meta-analysis of 7428 Patients and 44 Studies. *Mol Diagn Ther*. 2020, 24(5), 537-555. doi: 10.1007/s40291-020-00476-5. PMID: 32548799; PMCID: PMC7497308.
  13. Zhao J, Xu Z, Liu Y, Wang X, Liu X, Gao Y, Jin Y. The expression of cancer-testis antigen in ovarian cancer and the development of immunotherapy. *Am J Cancer Res*. 2022 Feb 15;12(2):681-694. PMID: 35261795; PMCID: PMC8899981.
  14. Daudi S, Eng KH, Mhawech-Fauceglia P, Morrison C, Miliotto A, Beck A, Matsuzaki J, Tsuji T, Groman A, Gnjjatic S, Spagnoli G, Lele S, Odunsi K. Expression and immune responses to MAGE antigens predict survival in epithelial ovarian cancer. *PLoS One*. 2014 Aug 7;9(8):e104099. doi: 10.1371/journal.pone.0104099. PMID: 25101620; PMCID: PMC4125181.
  15. Dutoit V, Rubio-Godoy V, Dietrich PY, Quiqueres AL, Schnuriger V, Rimoldi D, Liénard D, Speiser D, Guillaume P, Batard P, Cerottini JC, Romero P, Valmori D. Heterogeneous T-cell response to MAGE-A10(254-262): high avidity-specific cytolytic T lymphocytes show superior antitumor activity. *Cancer Res*. 2001 Aug 1;61(15):5850-6. PMID: 11479225.
  16. Groeper C, Gambazzi F, Zajac P, Bubendorf L, Adamina M, Rosenthal R, Zerkowski HR, Heberer M, Spagnoli GC. Cancer/testis antigen expression and specific cytotoxic T lymphocyte responses in non small cell lung cancer. *Int J Cancer*. 2007 Jan 15;120(2):337-43. doi: 10.1002/ijc.22309. PMID: 17066423.
  17. Thomas, R.; Al-Khadairi, G.; Roelands, J.; Hendrickx, W.; Dermime, S.; Bedognetti, D.; Decock, J. NY-ESO-1 Based Immunotherapy of Cancer: Current Perspectives. *Front Immunol*. 2018, 9, 947. doi: 10.3389/fimmu.2018.00947. PMID: 29770138; PMCID: PMC5941317.
  18. Odunsi K. Immunotherapy in ovarian cancer. *Ann Oncol*. 2017 Nov 1;28(suppl\_8):viii1-viii7. doi: 10.1093/annonc/mdx444. PMID: 29232467; PMCID: PMC5834124.
  19. Prat, J.; FIGO Committee on Gynecologic Oncology. Staging Classification for Cancer of the Ovary, Fallopian Tube, and Peritoneum: Abridged Republication of Guidelines From the International Federation of Gynecology and Obstetrics (FIGO). *Obstet Gynecol*. 2015, 126(1), 171-4. doi: 10.1097/AOG.0000000000000917. PMID: 26241270.
  20. Malpica, A.; Deavers, M.T.; Lu, K.; Bodurka, D.C.; Atkinson, E.N.; Gershenson, D.M.; Silva, E.G. Grading ovarian serous carcinoma using a two-tier system. *Am J SurgPathol*. 2004, 28(4), 496-504. doi: 10.1097/00000478-200404000-00009. PMID: 15087669.
  21. Wimberger, P.; Wehling, M.; Lehmann, N.; Kimmig, R.; Schmalfeldt, B.; Burges, A.; Harter, P.; Pfisterer, J.; du Bois, A. Influence of residual tumor on outcome in ovarian cancer patients with FIGO stage IV disease: an exploratory analysis of the AGO-OVAR (ArbeitsgemeinschaftGynaekologischeOnkologie Ovarian Cancer Study Group). *Ann Surg Oncol*. 2010, 17(6), 1642-8. doi: 10.1245/s10434-010-0964-9. Epub 2010 Feb 18. PMID: 20165986.
  22. Eisenhauer, E.A.; Therasse, P.; Bogaerts, J.; Schwartz, L.H.; Sargent, D.; Ford, R.; Dancey, J.; Arbuck, S.; Gwyther, S.; Mooney, M.; et al. New response evaluation criteria in solid tumours: revised RECIST guideline (version 1.1). *Eur J Cancer*. 2009, 45(2), 228-47. doi: 10.1016/j.ejca.2008.10.026. PMID: 19097774.
  23. Friedlander, M.; Trimble, E.; Tinker, A.; Alberts, D.; Avall-Lundqvist, E.; Brady, M.; Harter, P.; Pignata, S.; Pujade-Lauraine, E.; Sehouli, J.; et al. Clinical trials in recurrent ovarian cancer. *Int J Gynecol Cancer*. 2011, 21(4), 771-5. doi: 10.1097/IGC.0b013e31821bb8aa. PMID: 21543939.
  24. Mrklič I, Spagnoli GC, Juretić A, Pogorelić Z, Tomić S. Co-expression of cancer testis antigens and topoisomerase 2-alpha in triple negative breast carcinomas. *Acta Histochem*. 2014 Jun;116(5):740-6. doi: 10.1016/j.acthis.2014.01.003. Epub 2014 Feb 18. PMID: 24560456.
  25. Schultz-Thater E, Piscuoglio S, Iezzi G, Le Magnen C, Zajac P, Carafa V, Terracciano L, Tornillo L, Spagnoli GC. MAGE-A10 is a nuclear protein frequently expressed in high percentages of tumor cells in lung, skin

- and urothelial malignancies. *Int J Cancer*. 2011 Sep 1;129(5):1137-48. doi: 10.1002/ijc.25777. Epub 2011 Jan 12. PMID: 21710496.
26. Schultz-Thater E, Noppen C, Gudat F, Dürmüller U, Zajac P, Kocher T, Heberer M, Spagnoli GC. NY-ESO-1 tumour associated antigen is a cytoplasmic protein detectable by specific monoclonal antibodies in cell lines and clinical specimens. *Br J Cancer*. 2000 Jul;83(2):204-8. doi: 10.1054/bjoc.2000.1251. PMID: 10901371; PMCID: PMC2363487.
  27. Agarwal, R.; Kaye S.B. Ovarian cancer: strategies for overcoming resistance to chemotherapy. *Nat Rev Cancer*. 2003, 3(7), 502-16. doi: 10.1038/nrc1123. PMID: 12835670.
  28. Shen, D.W.; Pouliot, L.M.; Hall, M.D.; Gottesman, M.M. Cisplatin resistance: a cellular self-defense mechanism resulting from multiple epigenetic and genetic changes. *Pharmacol Rev*. 2012, 64(3), 706-21. doi: 10.1124/pr.111.005637. Epub 2012 Jun 1. PMID: 22659329; PMCID: PMC3400836.
  29. Leung D, Price ZK, Lokman NA, Wang W, Goonetilleke L, Kadife E, Oehler MK, Ricciardelli C, Kannourakis G, Ahmed N. Platinum-resistance in epithelial ovarian cancer: an interplay of epithelial-mesenchymal transition interlinked with reprogrammed metabolism. *J Transl Med*. 2022 Dec 3;20(1):556. doi: 10.1186/s12967-022-03776-y. PMID: 36463238; PMCID: PMC9719259.
  30. Tiwari N, Gheldof A, Tatari M, Christofori G. EMT as the ultimate survival mechanism of cancer cells. *Semin Cancer Biol*. 2012 Jun;22(3):194-207. doi: 10.1016/j.semcancer.2012.02.013. Epub 2012 Mar 8. PMID: 22406545.
  31. Li, X.F.; Ren, P.; Shen, W.Z.; Jin, X.; Zhang, J. The expression, modulation and use of cancer-testis antigens as potential biomarkers for cancer immunotherapy. *Am J Transl Res*. 2020, 12(11), 7002-7019. PMID: 33312347; PMCID: PMC7724325.
  32. Lengyel, E. Ovarian cancer development and metastasis. *Am J Pathol*. 2010, 177(3), 1053-64. doi: 10.2353/ajpath.2010.100105. Epub 2010 Jul 22. PMID: 20651229; PMCID: PMC2928939.
  33. Kasuga, C.; Nakahara, Y.; Ueda, S.; Hawkins, C.; Taylor, M.D.; Smith, C.A.; Rutka, J.T. Expression of MAGE and GAGE genes in medulloblastoma and modulation of resistance to chemotherapy. Laboratory investigation. *J NeurosurgPediatr*. 2008, 1(4), 305-13. doi: 10.3171/PED/2008/1/4/305. PMID: 18377306.
  34. Hartmann, S.; Kriegebaum, U.; Küchler, N.; Brands, R.C.; Linz, C.; Kübler, A.C.; Müller-Richter, U.D. Correlation of MAGE-A tumor antigens and the efficacy of various chemotherapeutic agents in head and neck carcinoma cells. *Clin Oral Investig*. 2014, 18(1), 189-97. doi: 10.1007/s00784-013-0936-0. Epub 2013 Feb 21. PMID: 23430338.
  35. Hartmann, S.; Zwick, L.; Scheurer, M.J.J.; Fuchs, A.R.; Brands, R.C.; Seher, A.; Böhm, H.; Kübler, A.C.; Müller-Richter, U.D.A. MAGE-A11 expression contributes to cisplatin resistance in head and neck cancer. *Clin Oral Investig*. 2018, 22(3), 1477-1486. doi: 10.1007/s00784-017-2242-8. Epub 2017 Oct 15. PMID: 29034444.
  36. Duan, Z.; Duan, Y.; Lamendola, D.E.; Yusuf, R.Z.; Naem, R.; Penson, R.T.; Seiden, M.V. Overexpression of MAGE/GAGE genes in paclitaxel/doxorubicin-resistant human cancer cell lines. *Clin Cancer Res*. 2003, 9(7), 2778-85. PMID: 12855658.
  37. Yakirevich E, Sabo E, Lavie O, Mazareb S, Spagnoli GC, Resnick MB. Expression of the MAGE-A4 and NY-ESO-1 cancer-testis antigens in serous ovarian neoplasms. *Clin Cancer Res*. 2003 Dec 15;9(17):6453-60. PMID: 14695148.
  38. Xu, Y.; Wang, C.; Zhang, Y.; Jia, L.; Huang, J. Overexpression of MAGE-A9 Is Predictive of Poor Prognosis in Epithelial Ovarian Cancer. *Sci Rep*. 2015, 5, 12104. doi: 10.1038/srep12104. PMID: 26175056; PMCID: PMC4502509.
  39. Szender, J.B.; Papanicolaou-Sengos, A.; Eng, K.H.; Miliotto, A.J.; Lugade, A.A.; Gnjjatic, S.; Matsuzaki, J.; Morrison, C.D.; Odunsi, K. NY-ESO-1 expression predicts an aggressive phenotype of ovarian cancer. *Gynecol Oncol*. 2017, 145(3), 420-425. doi: 10.1016/j.ygyno.2017.03.509. Epub 2017 Apr 6. PMID: 28392127; PMCID: PMC5497581.
  40. Matak L, Mikuš M, Ćorić M, Spagnol G, Matak M, Vujić G. Comparison end-to-end anastomosis with ostomy after secondary surgical cytoreduction for recurrent high-grade serous ovarian cancer: observational single-center study. *Arch Gynecol Obstet*. 2023 Jul;308(1):231-237. doi: 10.1007/s00404-023-06918-9. Epub 2023 Jan 21. PMID: 36680573.
  41. Blumenschein GR, Devarakonda S, Johnson M, Moreno V, Gainor J, Edelman MJ, et al. Phase I clinical trial evaluating the safety and efficacy of ADP-A2M10 SPEAR T cells in patients with MAGE-A10<sup>+</sup> advanced non-small cell lung cancer. *J Immunother Cancer*. 2022 Jan;10(1):e003581. doi: 10.1136/jitc-2021-003581. PMID: 35086946; PMCID: PMC8796260.
  42. Lamers CH, van Steenberghe-Langeveld S, van Brakel M, Groot-van Ruijven CM, van Elzakker PM, van Krimpen B, et al. T cell receptor-engineered T cells to treat solid tumors: T cell processing toward optimal T cell fitness. *Hum Gene Ther Methods*. 2014 Dec;25(6):345-57. doi: 10.1089/hgtb.2014.051. PMID: 25423330; PMCID: PMC4268575.
  43. Morgan RA, Chinnasamy N, Abate-Daga D, Gros A, Robbins PF, Zheng Z, et al. Cancer regression and neurological toxicity following anti-MAGE-A3 TCR gene therapy. *J Immunother*. 2013 Feb;36(2):133-51. doi: 10.1097/CJI.0b013e3182829903. PMID: 23377668; PMCID: PMC3581823.

44. van Baal JOAM, van Noorden CJF, Nieuwland R, Van de Vijver KK, Sturk A, van Driel WJ, Kenter GG, Lok CAR. Development of Peritoneal Carcinomatosis in Epithelial Ovarian Cancer: A Review. *J HistochemCytochem*. 2018 Feb;66(2):67-83. doi: 10.1369/0022155417742897. Epub 2017 Nov 22. PMID: 29164988; PMCID: PMC5794203.

**Disclaimer/Publisher's Note:** The statements, opinions and data contained in all publications are solely those of the individual author(s) and contributor(s) and not of MDPI and/or the editor(s). MDPI and/or the editor(s) disclaim responsibility for any injury to people or property resulting from any ideas, methods, instructions or products referred to in the content.