

Supplementary Materials:

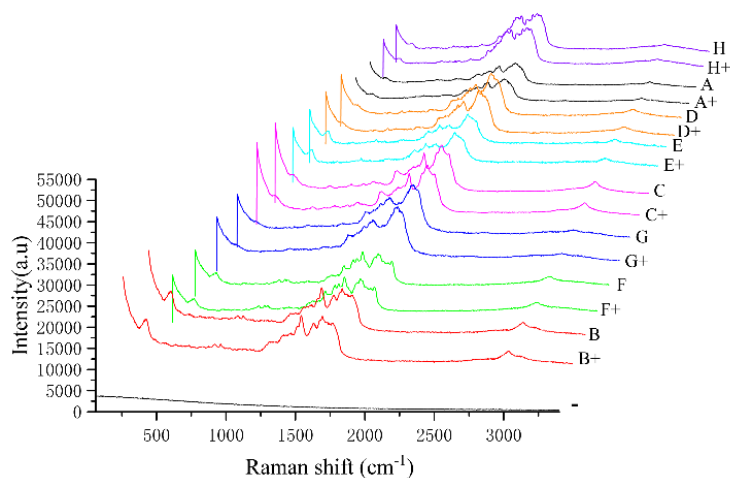
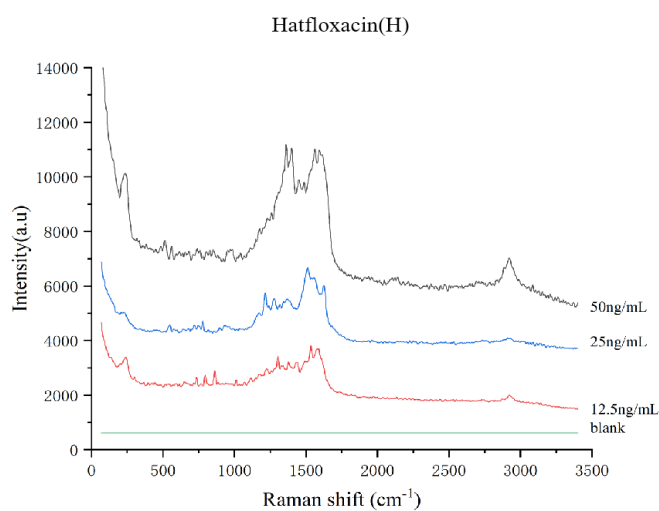
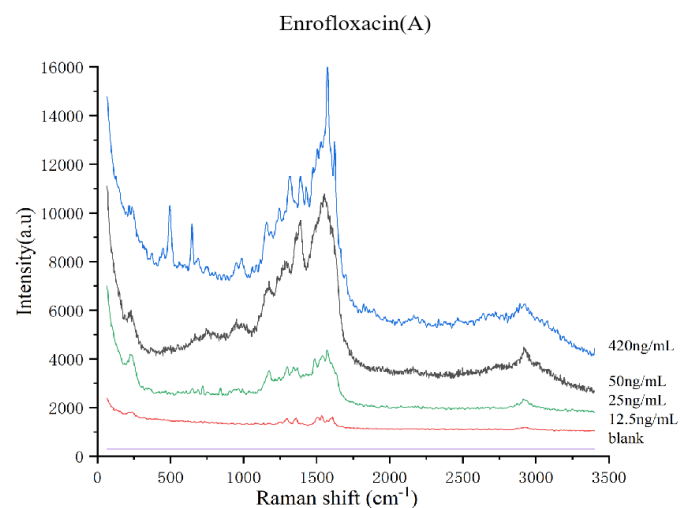


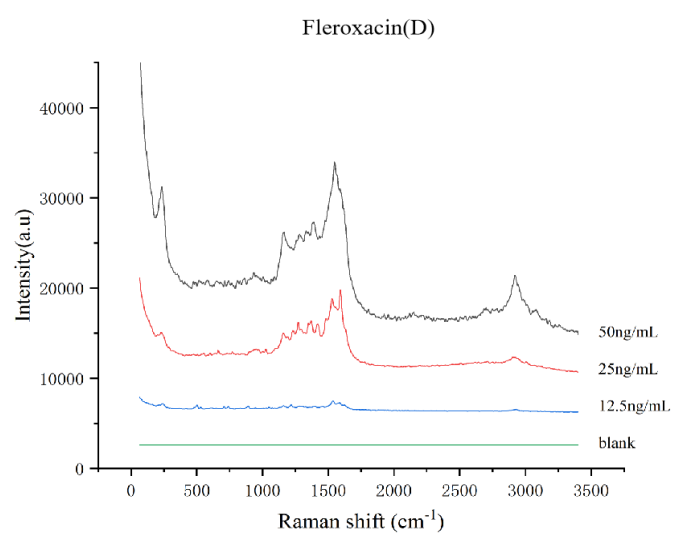
Figure SM₁. SERS of the eight quinolones in the simulated positive sample by the TLC-SERS (H,A,D, E, C, G, F, and B represents Nadifloxacin, Enrofloxacin, Fleroxacin, Sparfloxacin, Ofloxacin, Gatifloxacin, Enoxacin, and Ciprofloxacin, respectively. H⁺, A⁺, E⁺, D⁺, C⁺, G⁺, F⁺, B⁺ represents Simulated positive samples containing H, A, D, E, C, G, F, and B; “—” represents Negative sample.)



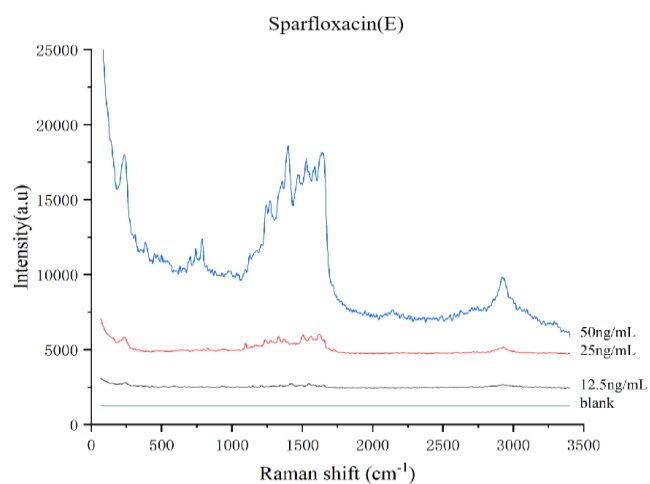
Figures SM₂. SERS of different concentrations of the hatfloxacin (H) by the TLC-SERS



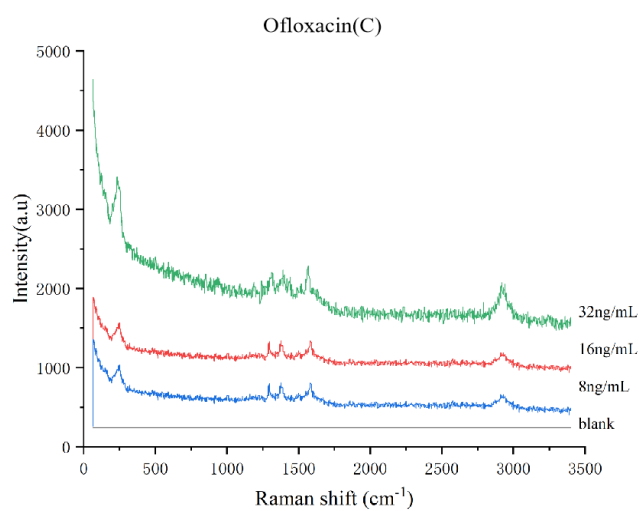
Figures SM₃. SERS of different concentrations of the enrofloxacin (A) by the TLC-SERS



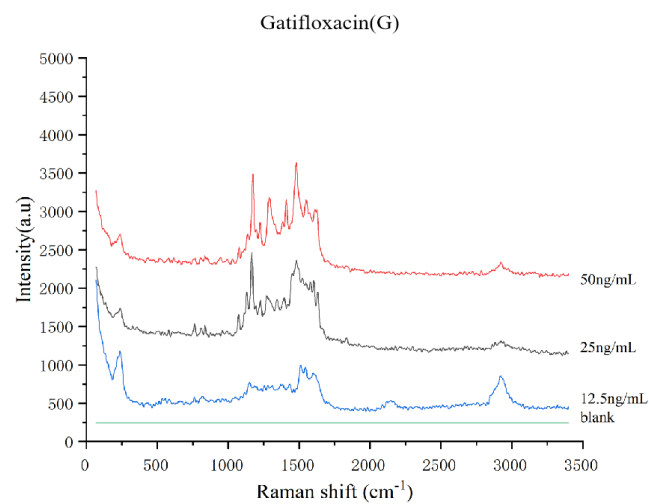
Figures SM₄. SERS of different concentrations of the fleroxacin (D) by the TLC-SERS



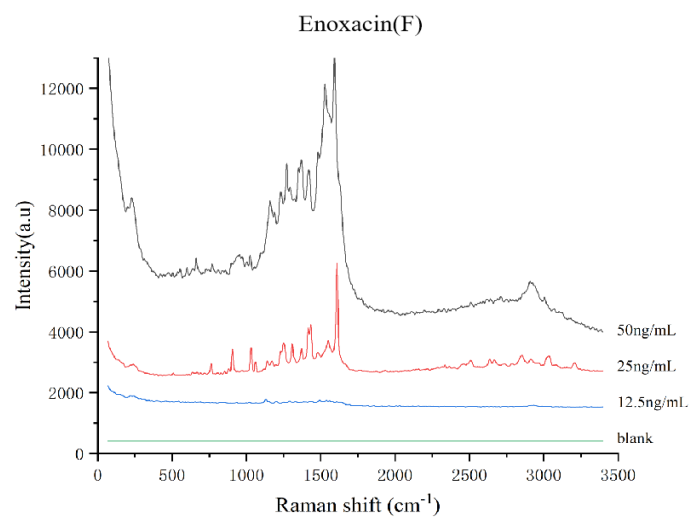
Figures SM₅. SERS of different concentrations of the sparfloxacin (E) by the TLC-SERS



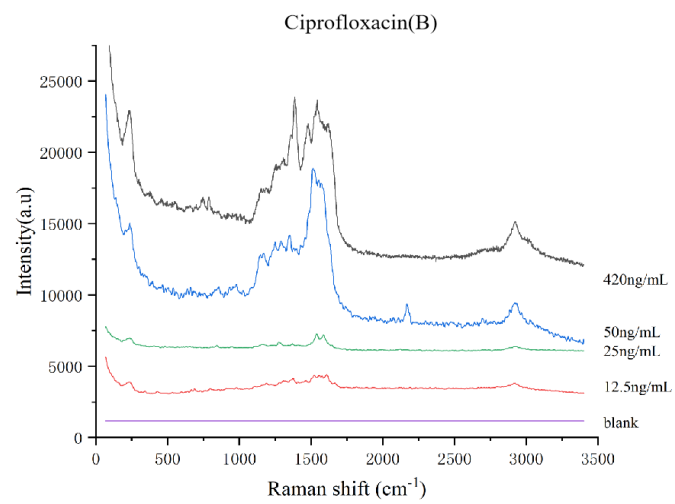
Figures SM₆. SERS of different concentrations of the ofloxacin (C) by the TLC-SERS



Figures SM₇. SERS of different concentrations of the gatifloxacin (G) by the TLC-SERS



Figures SM₈. SERS of different concentrations of the enoxacin (F) by the TLC-SERS



Figures SM₉. SERS of different concentrations of the ciprofloxacin (B) by the TLC-SERS