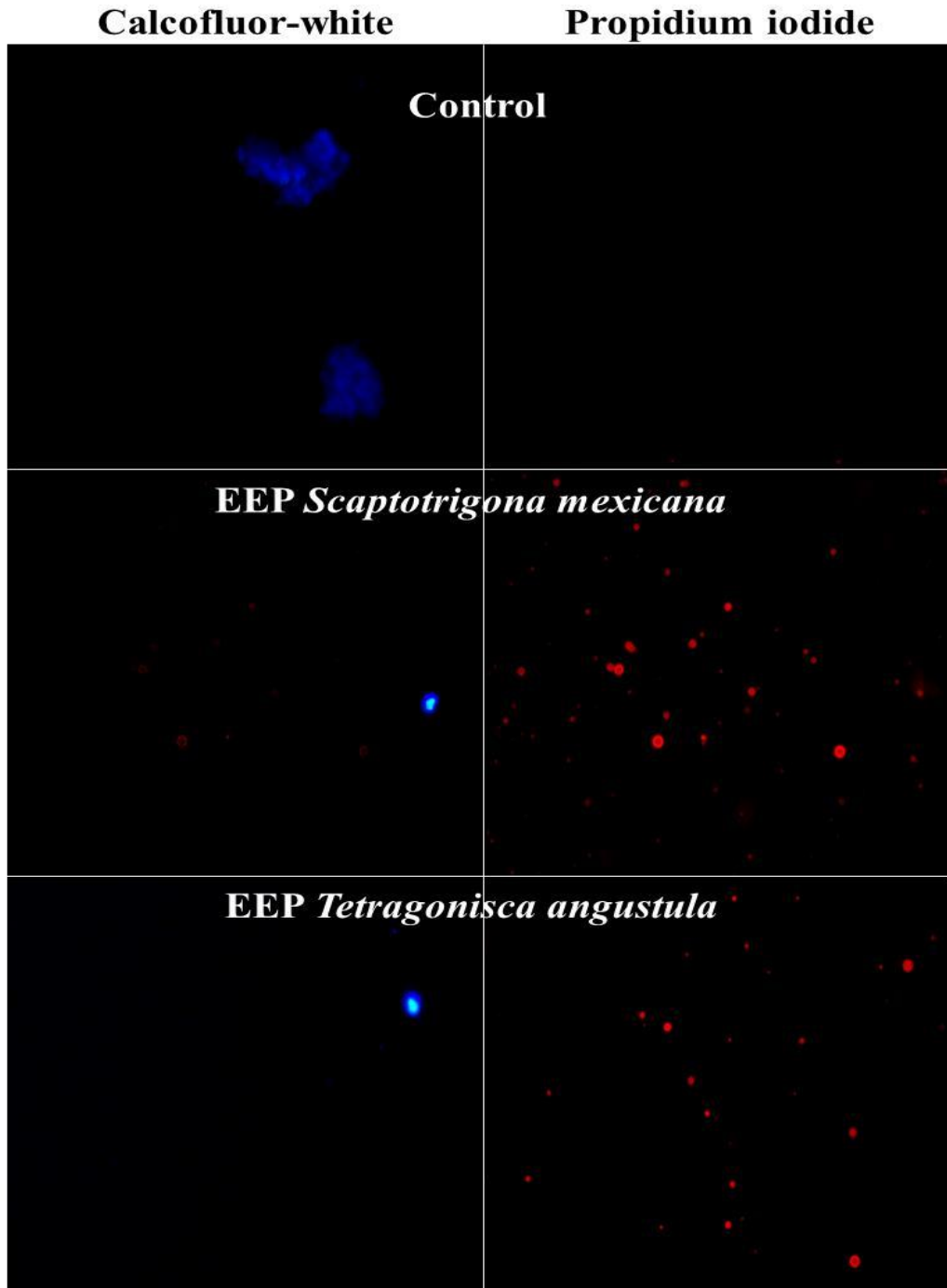


**Figure 3.** Effect of EEP of *Scaptotrigona mexicana* and *Tetragonisca angustula* on reference strain *Malassezia pachydermatis* ATCC 14522 were obtained by fluorescence microscopy and dyed with calcofluor-white and propidium iodide. Cultures were exposed to EEP at a concentration of 64 mg/ml for 48 h at 28 °C. Propidium iodide penetration was observed, indicating damage to the yeast. With calcofluor-white stain, only morphology deformation.



**Figure 4.** Effect of EEP of *Scaptotrigona mexicana* and *Tetragonisca angustula* on the clinical strain of *Malassezia pachydermatis* were obtained by fluorescence microscopy and dyed with calcofluor-white and propidium iodide. Cultures were exposed to EEP at a concentration of 64 mg/ml for 48 hr at 28 °C. Propidium iodide penetration was observed, indicating damage to the yeast. With calcofluor-white stain, alteration of morphology is observed. A greater damage was observed since it was not detected the presence with the calcofluor-white of the yeast and only the red of the propidium iodide was detected with Ethanolic Extract of *Tetragonisca angustula* Propolis.