

The original, uncropped, and unedited gel images are as follows:

duodenum

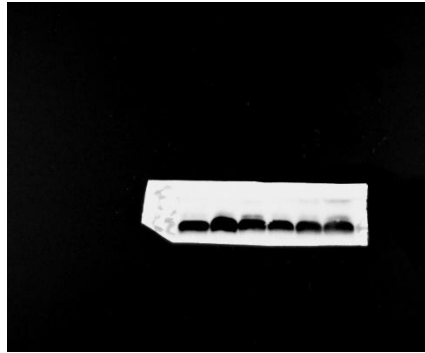


Figure 1. Original, uncropped, and unedited β -actin gel image in duodenum. The lanes from left to right represent: 22 d CC, 22d CS3, 22 d CS6, 36 d CC, 36 d CS3, 36 d CS6.

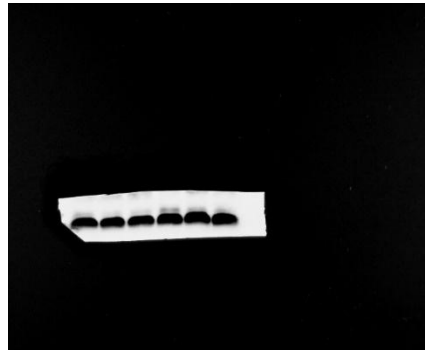


Figure 2. Original, uncropped, and unedited β -actin gel image in duodenum. The lanes from left to right represent: 43 d CC, 43 d CS3, 43 d CS6, Y6 CC, Y6 d CS3, Y6 CS6.



Figure 3. Original, uncropped, and unedited Claudin-1 gel image in duodenum. The lanes from left to right represent: 22 d CC, 22d CS3, 22 d CS6.



Figure 4. Original, uncropped, and unedited Claudin-1 gel image in duodenum. The lanes from left to right represent: 36 d CC, 36 d CS3, 36 d CS6.



Figure 5. Original, uncropped, and unedited Claudin-1 gel image in duodenum. The lanes from left to right represent: 43 d CC, 43 d CS3, 43 d CS6.



Figure 6. Original, uncropped, and unedited Claudin-1 gel image in duodenum. The lanes from left to right represent: Y6 CC, Y6 CS3, Y6 CS6.



Figure 7. Original, uncropped, and unedited E-cadherin gel image in duodenum. The lanes from left to right represent: 22 d CC, 22d CS3, 22 d CS6, 36 d CC, 36 d CS3, 36 d CS6.

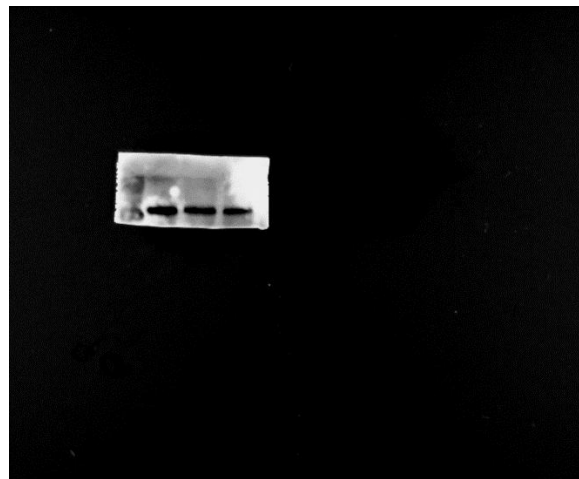


Figure 8. Original, uncropped, and unedited E-cadherin gel image in duodenum. The lanes from left to right represent: 43 d CC, 43 d CS3, 43 d CS6.



Figure 9. Original, uncropped, and unedited E-cadherin gel image in duodenum. The lanes from left to right represent: Y6 CC, Y6 CS3, Y6 CS6.

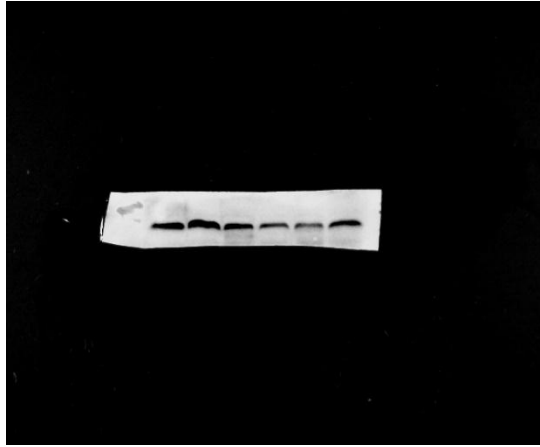


Figure 10. Original, uncropped, and unedited Occludin gel image in duodenum. The lanes from left to right represent: 22 d CC, 22d CS3, 22 d CS6, 36 d CC, 36 d CS3, 36 d CS6.

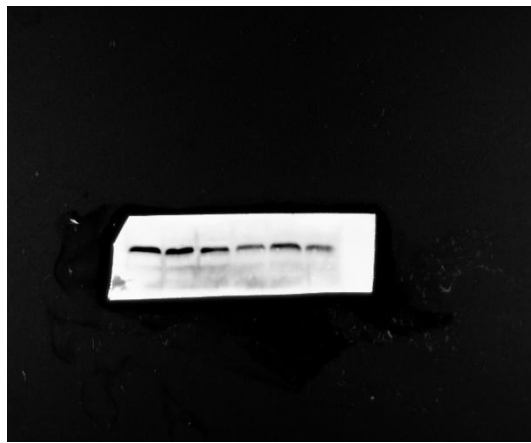


Figure 11. Original, uncropped, and unedited Occludin gel image in duodenum. The lanes from left to right represent: 43 d CC, 43 d CS3, 43 d CS6, Y6 CC, Y6 d CS3, Y6 CS6.

jejunum

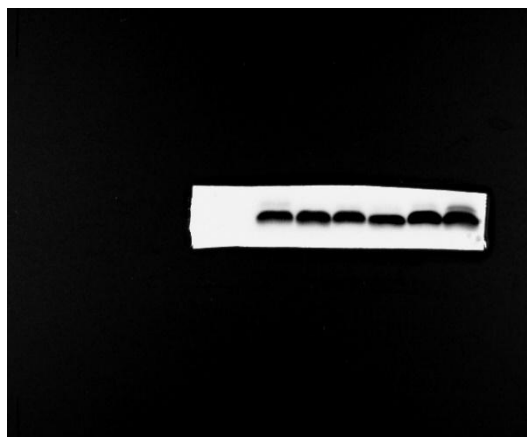


Figure 12. Original, uncropped, and unedited β -actin gel image in jejunum. The lanes from left to right represent: 22 d CC, 22d CS3, 22 d CS6, 36 d CC, 36 d CS3, 36 d CS6.



Figure 13. Original, uncropped, and unedited β -actin gel image in jejunum. The lanes from left to right represent: 43 d CC, 43 d CS3, 43 d CS6, Y6 CC, Y6 d CS3, Y6 CS6.



Figure 14. Original, uncropped, and unedited Claudin-1 gel image in jejunum. The lanes from left to right represent: 22 d CC, 22d CS3, 22 d CS6.



Figure 15. Original, uncropped, and unedited Claudin-1 gel image in jejunum. The lanes from left to right represent: 36 d CC, 36 d CS3, 36 d CS6.



Figure 16. Original, uncropped, and unedited Claudin-1 gel image in jejunum. The lanes from left to right represent: 43 d CC, 43 d CS3, 43 d CS6.



Figure 17. Original, uncropped, and unedited Claudin-1 gel image in jejunum. The lanes from left to right represent: Y6 CC, Y6 CS3, Y6 CS6.



Figure 18. Original, uncropped, and unedited E-cadherin gel image in jejunum. The lanes from left to right represent: 22 d CC, 22d CS3, 22 d CS6.

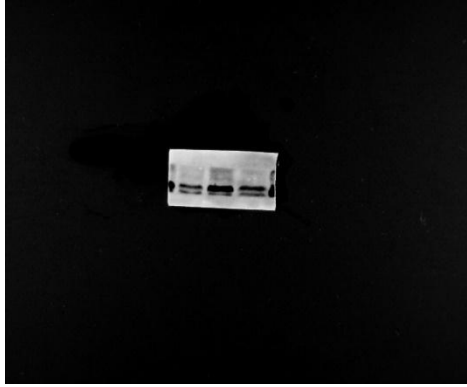


Figure 19. Original, uncropped, and unedited E-cadherin gel image in jejunum. The lanes from left to right represent: 36 d CC, 36 d CS3, 36 d CS6.



Figure 20. Original, uncropped, and unedited E-cadherin gel image in jejunum. The lanes from left to right represent: 43 d CC, 43 d CS3, 43 d CS6, Y6 CC, Y6 d CS3, Y6 CS6.



Figure 21. Original, uncropped, and unedited Occludin gel image in jejunum. The lanes from left to right represent: 22 d CC, 22d CS3, 22 d CS6, 36 d CC, 36 d CS3, 36 d CS6.



Figure 22. Original, uncropped, and unedited Occludin gel image in jejunum. The lanes from left to right represent: 43 d CC, 43 d CS3, 43 d CS6, Y6 CC, Y6 d CS3, Y6 CS6.