



Figure S1: Photographs from in vivo studies in nude mice harboring s.c. tumors. Photographs were taken at different time points from mice harboring established tumors in the flank, and treated either with PBS, AR2011 or AR2011(404). Photographs were taken 15 and 35 days after the first administration either of the OAdVs or PBS. The arrows point to the tumor location.

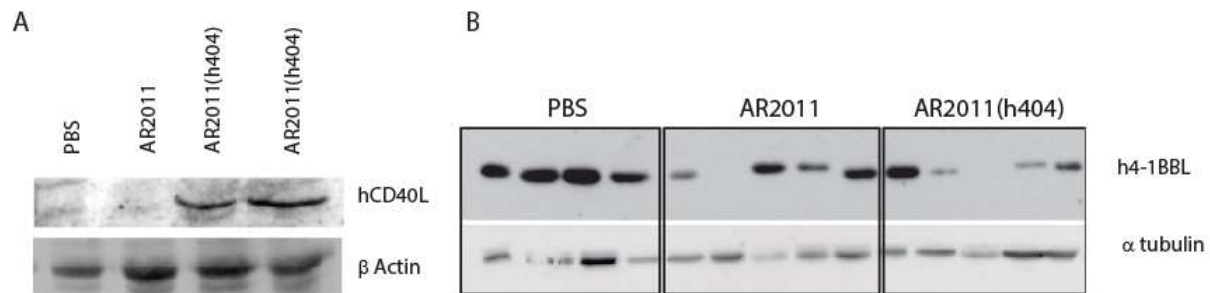


Figure S2. Western Blot of tumor samples obtained from in vivo studies in nude mice. Mice, 6-8 week old, were injected with 4.5×10^6 SKOV-3 cells in the flank. When tumors reached 100 mm^3 in average, mice were administered i.t. with 5×10^{10} v.p. of PBS, AR2011 or AR2011(h404) once. Seventy-two hours later mice were sacrificed, the tumor area was removed and a protein extract was prepared for western blot analyses. The membranes were probed with anti-CD40L (A) and anti-h4-1BBL (B). Anti- β -actin and anti- α -Tubulin were used as a loading control.

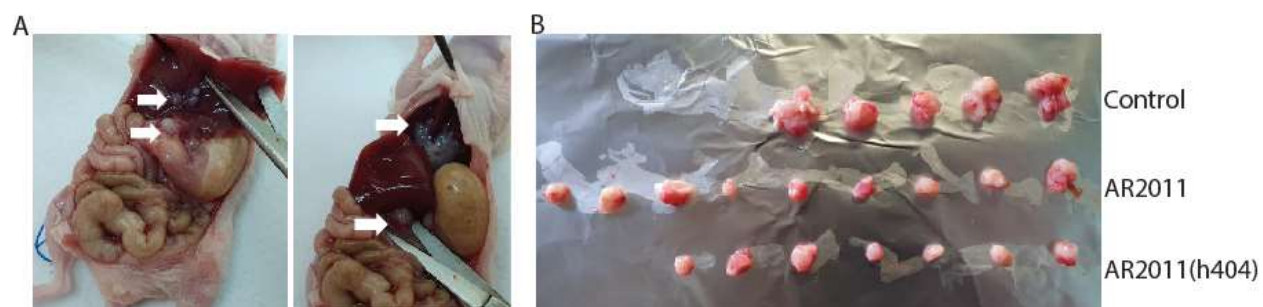


Figure S3. Photographs from in vivo studies in nude mice harboring intraperitoneal tumors. (A) Photographs were taken at autopsy on PBS-treated mice. The arrows show the location of metastatic nodules in the peritoneal cavity. **(B)** All the visible tumors were removed, collected for each single mouse and photographed.