

Fig. S1: UV – VIS Absorbance spectrum of a 10 nm gold film on a glass slide activated with MPTMS.

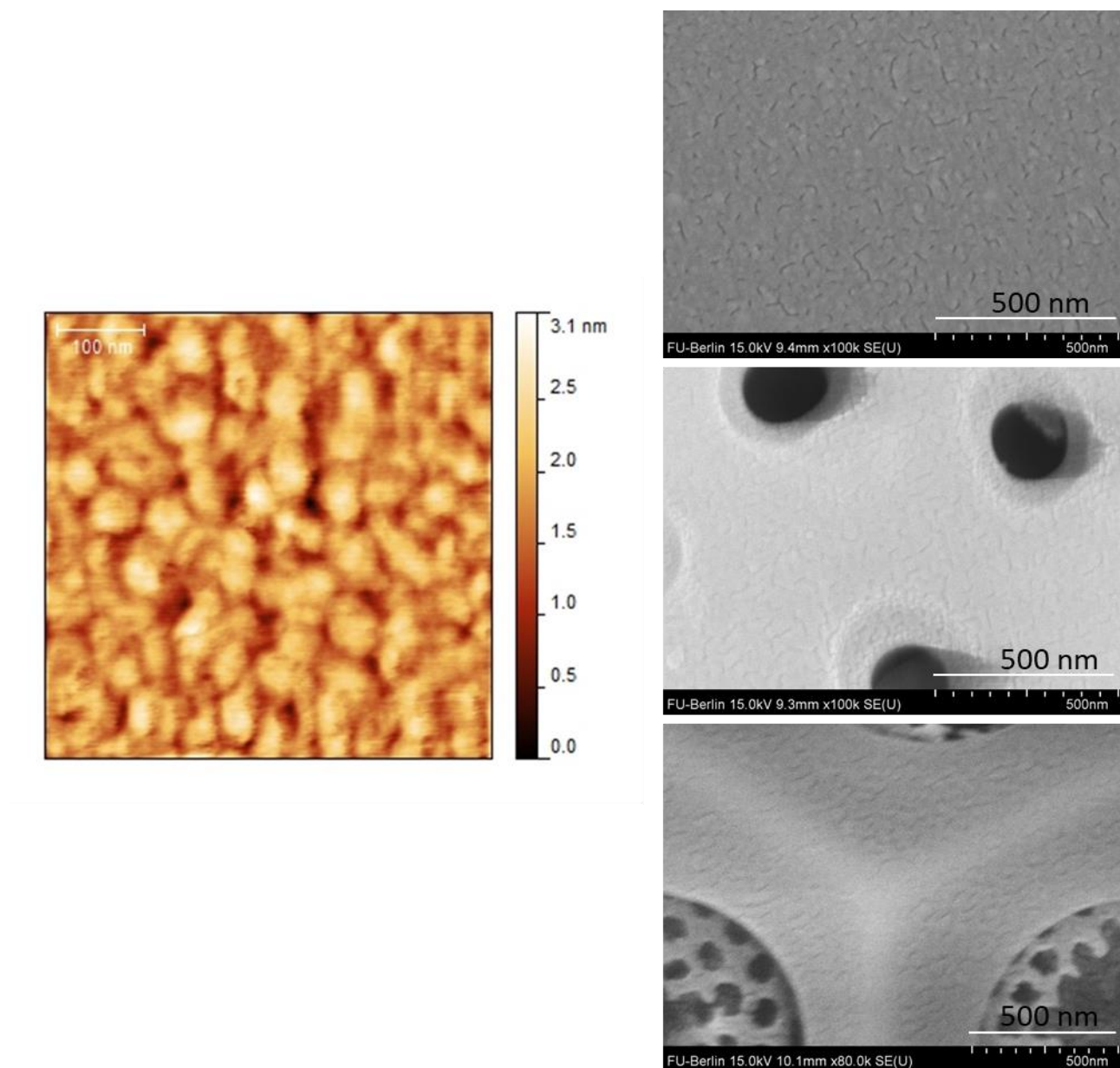


Fig. S2: AFM image of the 10 nm gold film on a glass slide (left); and SEM micrographs of the gold film on a glass slide (top right), Aula valve (middle right) and Cosc valve (bottom right). A glass slide was activated with MPTMS before the gold layer was evaporated.

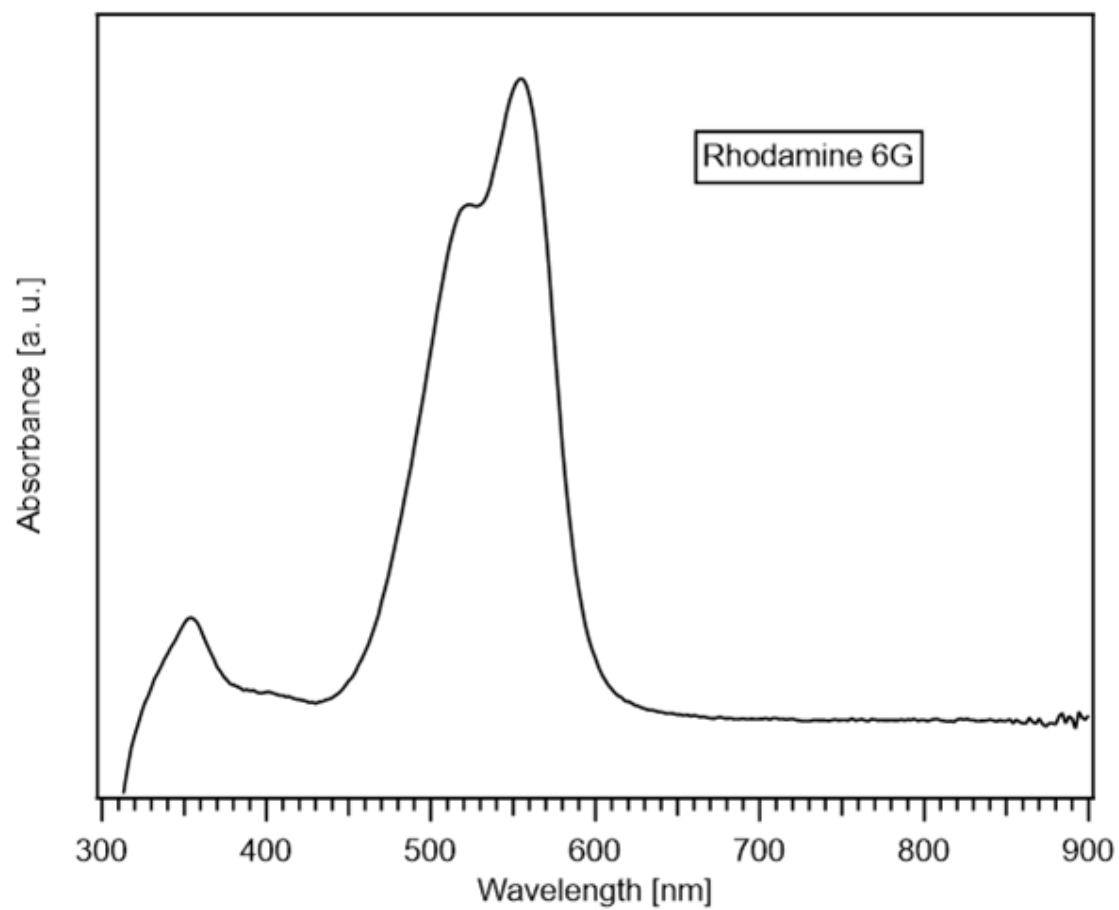


Fig. S3: UV – VIS Absorbance spectrum of 10^{-3} M Rhodamine 6G dissolved in ethanol.

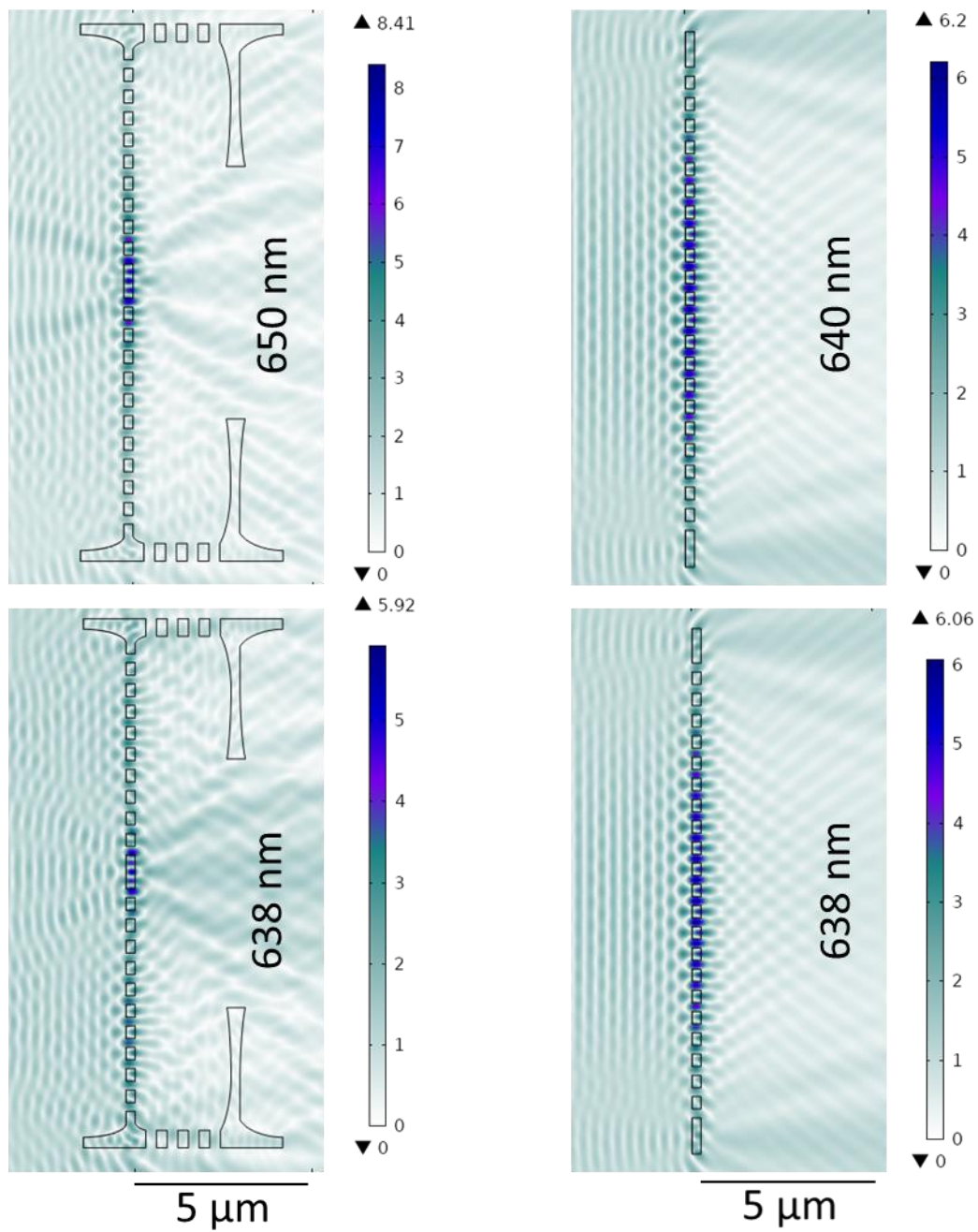


Fig. S4: The influence of defects (left) and the absence of curved edges (right) on GMR in Aulavalue.