

Disclaimer/Publisher's Note: The statements, opinions, and data contained in all publications are solely those of the individual author(s) and contributor(s) and not of MDPI and/or the editor(s). MDPI and/or the editor(s) disclaim responsibility for any injury to people or property resulting from any ideas, methods, instructions, or products referred to in the content.

Article

Super-Resolution Ultrasound Localization Microscopy using High-Frequency Ultrasound to Measure Ocular Perfusion Velocity in the Rat Eye

Hasan Ul Banna¹, Benjamin Mitchell¹, Stephen Chen² and Joel Palko^{1,*}

¹ Ophthalmology and Visual Sciences, West Virginia University, Morgantown 26505, USA
² School of Medicine, West Virginia University, Morgantown 26505, USA
* Correspondence: joel.palko@hsc.wvu.edu (J.P.)

Abstract: Imaging of the ocular vasculature can provide new insights into the pathophysiology of ocular diseases. This study proposes a novel high-frequency super-resolution ultrasound localization microscopy (SRULM) technique and evaluates its ability to measure *in vivo* perfusion changes in the rat eye at elevated intraocular pressure (IOP). A 38.4 MHz center frequency linear array transducer on a VisualSonics Vevo F2 imaging platform was used to collect high frame rate (1 kHz) radiofrequency data of the posterior rat eye following systemic microbubble contrast injection. Following clutter and spatiotemporal non-local means filtering, individual microbubbles were localized and tracked. The microbubble tracks were accumulated over 10,000 frames to generate vascular images quantifying perfusion velocity and direction. Experiments were performed using physiologic relevant controlled flow states for algorithm validation and subsequently performed *in vivo* on the rat eye at 10 mm Hg IOP increments from 10 to 60 mm Hg. The posterior vasculature of the rat eye, including the ophthalmic artery, long posterior ciliary arteries and their branches, central retinal artery and retinal arterioles and venules were successfully visualized, and velocities quantified at each IOP level. Significant reductions in arterial flow were measured as IOP was elevated. High-frequency SRULM can be used to visualize and quantify perfusion velocity of the rat eye in both the retrobulbar and intraocular vasculature simultaneously. The ability to detect ocular perfusion changes throughout the depth of the eye may help elucidate the role ischemia has in the pathophysiology of ocular diseases such as glaucoma.

Keywords: glaucoma; intraocular pressure; ocular hemodynamics; ocular vasculature; super-resolution ultrasound; ultrasound localization microscopy

1. Introduction

Intraocular pressure is the cardinal modifiable risk factor for the development and progression of glaucoma. However, it remains unclear how IOP initiates and propagates the cascade of events leading to retinal ganglion cell death. Converging evidence suggests that IOP-induced alterations to both the connective tissue and vasculature of the optic nerve head (ONH) are detrimental to the health of retinal ganglion cells [1,2]. Reduced perfusion to the ONH has been investigated as a contributor to glaucoma pathophysiology. Several epidemiologic studies have shown that reduced ocular perfusion pressure (OPP), generally defined as the mean arterial blood pressure to the eye minus IOP, to be associated with glaucoma prevalence and progression [3–7]. Understanding the role blood flow and its autoregulation have in glaucoma pathophysiology has been aided by a variety of methodologies with the goal of quantifying perfusion to the ONH.

Current clinically available optical vascular imaging modalities such as optical coherence tomography angiography (OCT-A) and laser speckle contrast imaging (LSCI) have provided insight into perfusion of the retina, peripapillary choroidal and prelaminar regions of the ONH. OCT-A has emerged as a potential clinical tool to estimate perfused vascular

density of the microcirculation around the superficial ONH. Using OCT-A to evaluate the deep peripapillary choroidal vasculature, studies have established microvascular dropout and reduced vessel density as biomarkers for longitudinal glaucoma progression, and that lowering IOP can improve this microcirculation [8–11]. Using LSCI, relative dynamic (i.e., systolic and diastolic) blood flow velocities of the superficial ONH can be measured. Initial clinical cross-sectional studies using LSCI have shown statistically significant differences in blood flow velocities between glaucoma, glaucoma suspect and control eyes [12]. These studies have provided supportive evidence that perfusion to different regions of the ONH may have an important pathologic role in some eyes with glaucoma. However, currently available optical techniques for quantifying ONH perfusion are unable to evaluate blood flow within the retrobulbar and posterior ciliary arteries that anastomose to the laminar region of the ONH, where glaucomatous damage is thought to first occur [13,14]. There is a need for non-invasive ways to measure blood flow to the retina, choroid, ONH and retrobulbar vessels to enable a better understanding of glaucoma pathophysiology in both patients and experimental research. Use of ultrasound has been applied to image the vasculature of the eye to overcome the penetration limitations of optical methods, however, the resolution of ultrasound techniques remains a major barrier for quantifying blood flow outside of larger arteries and veins.

Clinical studies using ultrasound color doppler imaging (CDI) to measure retrobulbar blood flow in relationship to glaucoma found increased resistive indices of the short posterior ciliary arteries to be associated with progression in eyes with primary open angle glaucoma (POAG) [15]. Other cross-sectional clinical studies found reduced flow velocities and higher resistive indices in normal tension glaucoma and POAG eyes compared to controls [16–18]. Silverman *et al.*[19] showed reductions in the arterial velocity and vascular density, with increases in resistive and pulsatility indices using plane wave doppler imaging in rat eyes with acute IOP elevations. Doppler ultrasound imaging of the posterior eye, however, is limited in its resolution and sensitivity to discriminate perfusion changes in small blood vessels.

To overcome the diffraction limit of ultrasound, super-resolution ultrasound localization microscopy (SRULM) has been used to image and quantify perfusion in the microvasculature of various organ systems. Similar in concept to super-resolution optical techniques such as stochastic optical reconstruction microscopy and fluorescence photoactivated localization microscopy, SRULM produces sub-diffraction images by localizing and accumulating the center positions of gas filled microbubbles (MB) standardly used as ultrasound contrast agents [20]. These bubbles can be tracked frame to frame with a variety of tracking methods to quantify perfusion velocity and direction to improve the resolution of the ultrasound system during vascular imaging while maintaining the penetration depth of ultrasound. The increase in frame rate provided by ultrafast ultrasound imaging, using techniques such as plane-wave emissions, provides the ability to track MBs in both high and low velocity flow states.

Successful applications of SRULM have been demonstrated clinically and in animal models. Huang *et al.*[21] demonstrated the feasibility of SRULM to image vasculature down to a resolution of 57.5 μm using a 3.6 MHz transducer in several human organs *in vivo*. Opacic *et al.*[22] has shown the ability of SRULM to characterize the vasculature of breast tumors in cancer patients. A broader use of SRULM has been in animal models of various diseases. Vascular and perfusion metrics with the ability to differentiate tumor types and treatment response has been derived from SRULM imaging in rodent cancer models [23,24]. Chen *et al.*[25] and Andersen *et al.*[26] have investigated changes in kidney blood flow related to ischemia-reperfusion damage in mouse and rat kidneys, respectively.

Qian *et al.*[27] has utilized SRULM to reveal reductions in vascular density and perfusion velocity in a posterior rabbit eye during acute IOP elevations. Morisset *et al.*[28] showed the use of SRULM and functional ultrasound in the rat eye to measure the neurovascular response of the retina. These preliminary animal studies using SRULM show its potential to provide the penetration depth required to image the vasculature of the eye

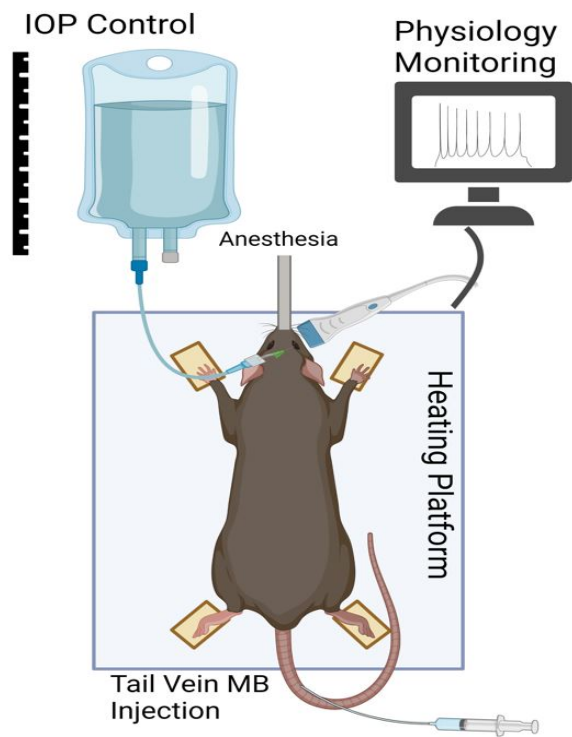


Figure 1. Schematic of experimental setup. Intraocular pressure (IOP) was controlled via cannulation of the anterior chamber of the rat eye with a 32 gauge needle through the superior peripheral cornea. Vitals, including heart rate, electrocardiogram and respiratory rate were monitored via the built-in physiologic monitoring of the Vevo F2 system. The ultrasound probe was oriented horizontally. Figure created with BioRender.com

thought to be most relevant to glaucoma while maintaining resolutions comparable to optical methods. SRULM also provides absolute velocity metrics compared to the relative velocities produced by techniques such as LSCI, and is theoretically less dependent on the imaging angle compared to doppler ultrasound. In this report, we describe the use of SRULM using a high frequency (38.4 MHz) ultrasound transducer to image the vasculature of the posterior segment and retrobulbar regions of *in vivo* rat eyes.

2. Materials and Methods

2.1. Ultrasound Instrumentation

Beamformed ultrasound radiofrequency data sampled at 96 MHz was acquired using a 38.4 MHz (25-57 MHz bandwidth) center frequency linear array ultrasound probe (UHF57x) operated by the Vevo F2 ultrasound imaging system (FUJIFILM VisualSonics, Toronto, Ontario, Canada). The power was determined empirically for our imaging depth by adjusting until MB density decreased secondary to ultrasound-induced disruption. The focused ultrasound system was used to collect data at a frame rate of 1 kHz with an image width of 5 mm. A total of 10,000 continuous frames were collected for each super-resolved image.

2.2. Controlled Flow Experiments

We characterized the performance of our ULM algorithms first using a silicone flow phantom with an inner diameter of 310 μm and outer diameter of 640 μm (Freudenberg Medical, Carpinteria, CA, USA). The tubing was connected to a syringe pump (PHD Ultra, Harvard Apparatus, Holliston, MA, USA) to control perfusion velocity. The perfusate consisted of USphere Prime ultrasound contrast MBs (Trust Bio-sonics, Taiwan, ROC) at a 1/50 times dilution to the original concentration (2.5 × 10¹⁰ MBs/mL) in 0.9% saline

solution. The typical diameter of the USphere perfluoropropane MB is 1.1-1.4 μm . Discrete velocities of 10 mm/s, 15 mm/s, 20 mm/s, 40 mm/s, 60 mm/s, 90 mm/s, 120 mm/s and 150 mm/s were used to evaluate the algorithm along a velocity spectrum containing low-flow and high-flow states. The transducer was oriented parallel to the flow through the tubing during RF data acquisition.

2.3. In Vivo Rat Eye Imaging

The right eye of retired female breeder Brown Norway rats ($n=7$), aged 4 to 6 months, were imaged *in vivo* with adherence to the guideline by the West Virginia University Institutional Animal Care and Use Committee (IACUC) and the ARVO Statement for the Use of Animals in Ophthalmic and Vision Research. The rats were anesthetized by induction with 5% isoflurane, which was then reduced to 2.5% during imaging, using 100% O_2 as the carrier gas. Animals were placed on a heated imaging table with a manual x-y-z linear stage and vitals were continuously monitored. Local anesthetic consisting of 0.5% proparacaine HCl (Alcon Inc., Ft. Worth, TX, USA) was placed in both eyes of the animal followed by application of GenTeal (0.3% hypromellose, Alcon Inc., Geneva, Switzerland) for lubrication. Lateral tail vein access was obtained using a 25 gauge needle with extension tubing (Instech Laboratories, Plymouth Meeting, PA, USA). In all experiments, a 0.05 mL bolus of 1:10 normal saline diluted contrast agent was injected into the tail vein. Repeat injections were performed for each set of 10,000 frames. A 32 gauge needle was used to cannulate the anterior chamber of the eye, which was attached to a balanced salt solution fluid reservoir for control of IOP based on the fluid reservoir height as seen in Fig. 1. The fluid reservoir was in-line with a pressure transducer (P75, Harvard Apparatus, Holliston, MA, USA) to confirm in-line pressure to the anterior chamber of the eye.

Ultrasound gel was then applied to the eye as a coupling agent. Prior to MB contrast injection, real-time conventional color doppler mode on the Vevo F2 system at a pulse repetition rate of 6 kHz was used to locate the central retinal artery (CRA) and long posterior ciliary arteries (LPCA), which are located inferior and adjacent to the optic nerve in the rat eye. The scan plane was oriented horizontally (i.e., lateral to medial) and adjusted along each axis to optimize the color doppler image. To mitigate acoustic absorption by the relatively large lens of the rat eye, imaging was performed with the probe placed inferior to the limbus with a pitch of the transducer directed superior towards the optic nerve. The transducer was then adjusted horizontally to optimize centration of the region of interest (ROI) within the image plane. The IOP of the eye was elevated in incremental steps of 10, 20, 30, 40, 50, 60 and back to 10 mm Hg with a 2-minute wait time between each pressure level prior to contrast agent injection and imaging. At each IOP level, 10,000 frames of beamformed RF data were collected and saved for offline post-processing. All 2D imaging was completed within 45 minutes of anesthesia induction.

2.4. Microbubble Localization and Tracking Algorithm

A schematic of the post-processing steps is shown in Fig. 2, with all steps completed in MATLAB 2019a (The MathWorks, Natick, MA, USA). The frames of RF signal were converted to in-phase quadrature (IQ) data and used to create B-mode images. The ROI was selected to best evaluate perfusion velocity within the LPCAs and CRA.

After selecting the ROI, spatiotemporal singular value decomposition (SVD) was utilized as a clutter filter to separate stationary from moving signals from the ultrasound IQ frames. The IQ data were subdivided into datasets of 1000 frames and reshaped into a 2D Casorati matrix, followed by the SVD calculation. One of the major decision points in SVD filtering is determining the cutoff numbers of the singular values to be retained for the filter. Several techniques have been utilized previously to complete this task, including hard-coding removal of the highest singular values (lowest order values), visually interpreting curvature of the ordered singular values and manually selecting a higher and/or lower cutoff based on the curvature of the ordered values [27,28]. We opted to use an adapted approach from Arnal *et al.*[29], which determines the singular value

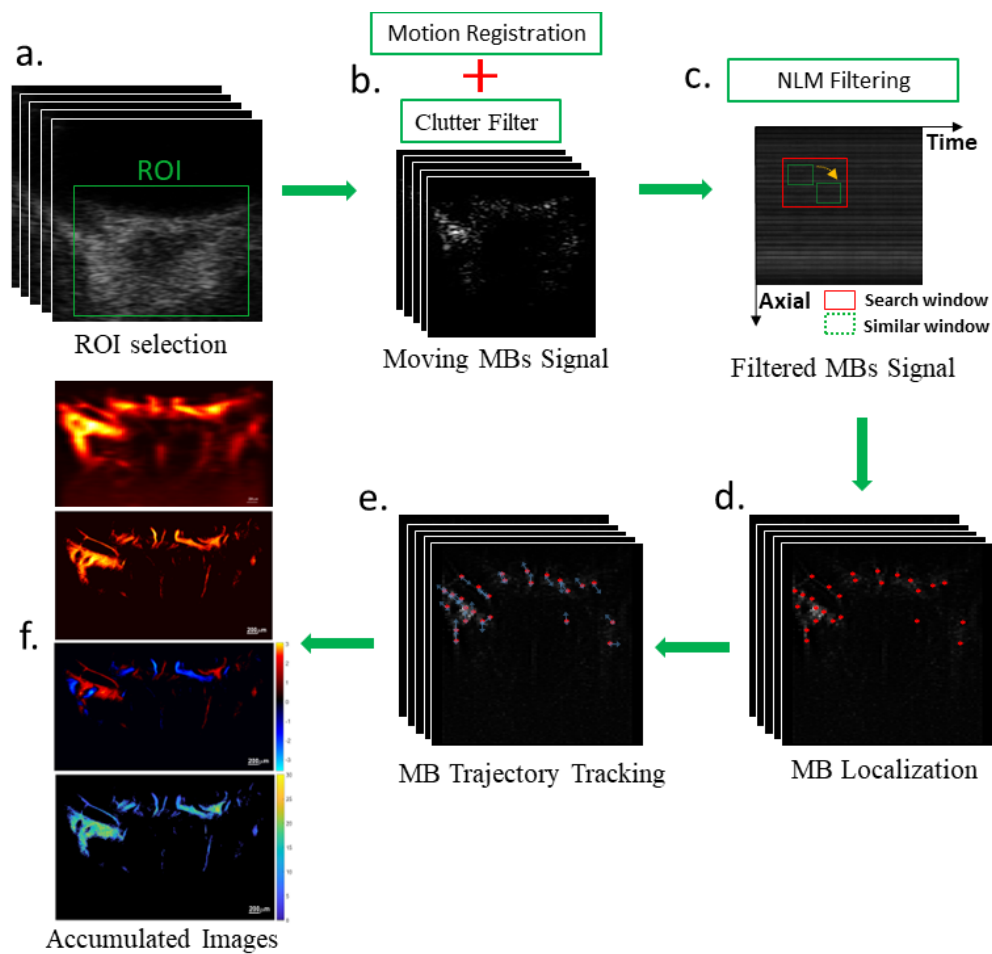


Figure 2. Post-processing steps in the ultrasound localization microscopy algorithm. (a) Radiofrequency data was collected for 10,000 frames, (b) motion registration and clutter filtering to remove stationary signal, (c) spatiotemporal non-local means filter, (d) microbubble (MB) localization followed by (e) tracking to produce accumulated (f) power doppler, density, bi-directional and velocity images.

cutoffs by analyzing the spatial covariance matrix of the envelopes of spatial singular values where the diagonal is set to zero. Previous methods used a normalized cross-correlation between the covariance matrix and a base of squares to define the singular value of the moving signals. We simplified this approach by finding the maximum difference of the moving median of subsequent rows and columns of the covariance matrix. From this calculation, the stationary signals were reconstructed by selecting the low-order singular values with a subsequent inverse SVD calculation.

The stationary signals were used to estimate tissue motion using a subpixel phase-correlation estimation [30]. The 2-D rigid transformation matrix from this calculation was used to correct for motion from frame to frame. Following image registration, power doppler images were created by accumulating the SVD-calculated motion signal along the slow-time dimension. The moving MB signal was then extracted using image subtraction of the registered frames. Given our use of high-frequency ultrasound, we found that the SVD clutter filter produced too high of a density of both moving MB and red blood cell (RBC) signal to track accurately. Image subtraction reduced the moving signal density by better maintaining the contrast difference between the MBs and RBCs, allowing for more accurate tracking of the MB signal. A spatiotemporal non-local means filter was then applied to the IQ data using a window of 9 by 9 pixels and a search window of 17 by 17 pixels with a degree of filtering calculated as two times the standard deviation of a manually selected

region of background noise [31,32]. The images were then interpolated to a lateral pixel resolution of 18.1 μm and an axial resolution of 8.2 μm using cubic interpolation (Matlab function 'interp2'), followed by empirical intensity thresholding. To equalize brightness of the MBs across the interpolated image, a scalar gaussian filter was applied with an x-dimension value of 3 and a y-dimension value of 1 (Matlab function 'imgaussfilt'). A 2-D normalized cross-correlation was performed on each interpolated frame using a manually selected point-spread function (PSF), resulting in a 2D cross-correlation coefficient map. Pixels with a cross-correlation coefficient below 0.6 were removed and the centroids of each remaining MB signal was calculated using a weighted average approach [27,32,33].

Tracking was performed on the localizations using the Kuhn-Munkres algorithm for assignment with a maximum linkage distance of 130 mm/s, no closing gap, and persistence of 5. To remove poor or false tracks, an angle constraint was applied to the tracks to remove pairings with an acute change in direction of over 180 degrees [34]. The tracks were linearly interpolated and smoothed (Matlab function 'smooth'). Track directions were calculated by determining the relative vertical direction (i.e., towards or away from the transducer) and direction was colored as per traditional color doppler with red towards and blue away from the transducer. The MB tracks were accumulated to generate super-resolved microvessel images consisting of track density, direction and velocity. In order to equalize the weight of systolic and diastolic flow velocities (i.e., a greater number of MB tracks are generated during systole compared to diastole), the mean velocity was determined by calculating the mean of the MB velocities within the selected ROI for each individual frame.

To determine the contrast to noise ratio (CNR) of the system with time following MB injection, 3 separate datasets of 10,000 frames were sequentially obtained in one eye and the CNR was calculated over the imaging time for each set of 1,000 frames using

$$CNR = \frac{|I_V - I_N|}{\sigma_N} \quad (1)$$

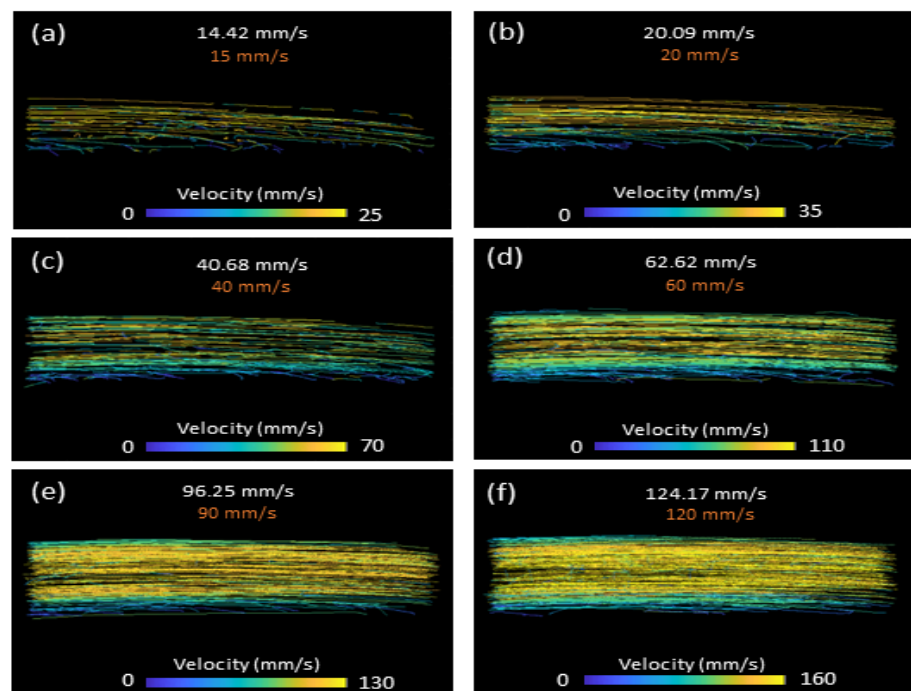


Figure 3. Super-resolution velocity profiles for controlled velocities of (a) 15 mm/s, (b) 20 mm/s, (c) 40 mm/s, (d) 60 mm/s, (e) 90 mm/s, and (f) 120 mm/s. The transducer probe was oriented parallel to the flow through the tube.

where I_V and I_N are the mean intensities of a selected vessel and noise ROI, respectively, and σ_N is the standard deviation of the noise ROI. Approximately 17 seconds elapsed between each batch of 10,000 frames to allow transfer and saving of the RF data.

The mean diameter of one LPCA and 2 retinal arterioles per eye was calculated using 3 cross-section full width at half maximum (FWHM) measurements at 10 mm Hg. A 3D dataset was also collected in a subset of eyes using the built-in linear motor of the Vevo F2 system with a step-size of 90 μm . A collection of 10,000 frames per step was achieved over a 2.0 mm scanning range. Following all experiments, the animals were euthanized, and eyes collected for further histological analysis (data not presented).

2.5. Statistical analysis

A one-way analysis of variance (ANOVA) with post-hoc Dunnett's test was used to calculate the statistical significance of percent perfusion velocity changes with IOP elevation within the LPCA with respect to baseline. Analyses was performed using R version 4.2.2.

3. Results

3.1. Controlled Flow Results

The reconstructed velocity images of the flow phantom for selected flow speeds are shown in Fig. 3. The mean calculated velocity for each selected control velocity of 10, 15, 20, 40, 60, 90, 120 and 150 mm/s were 9.3, 14.4, 20.1, 40.7, 62.6, 96.2, 124.1 and 157.7 mm/s, respectively. All measured velocities fell within 8% of the pre-defined velocities. Laminar

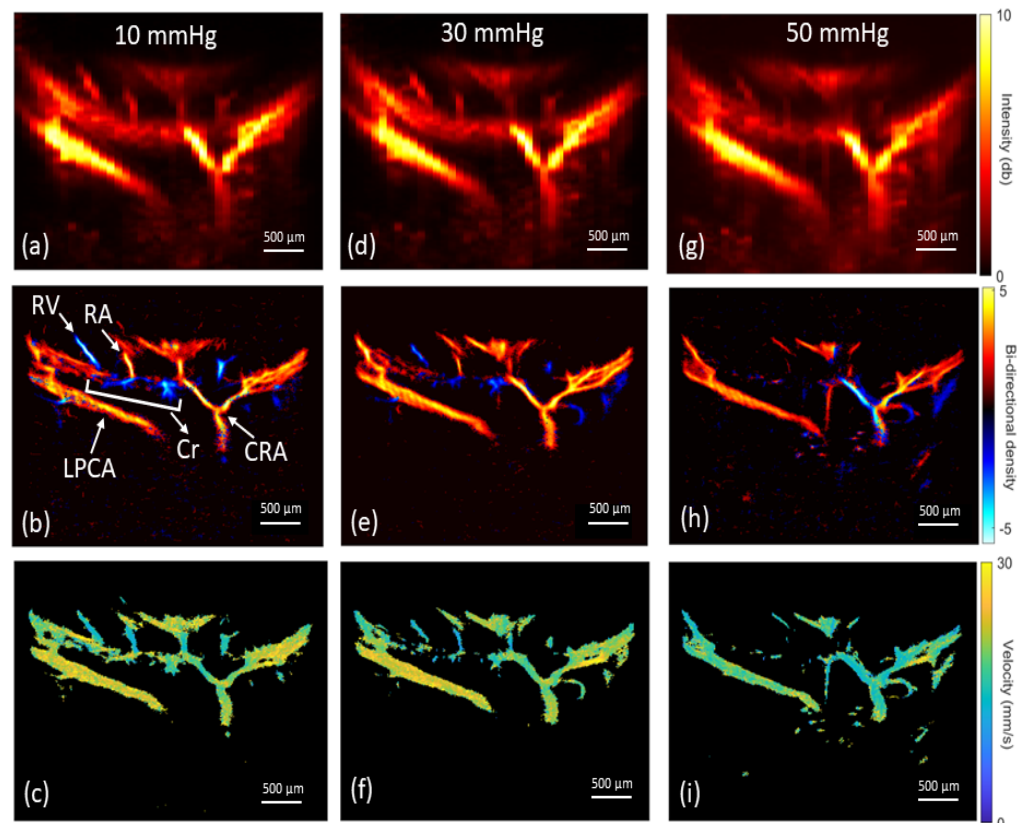


Figure 4. Representative reconstruction of *in vivo* rat eye vasculature from measurements under increasing IOP magnitudes. Row 1: power doppler images; row 2: bi-directional microvascular images; row 3: flow velocity images. Corresponding images for IOP magnitudes of (a-c) 10 mm Hg, (d-f) 30 mm Hg and (g-i) 50 mm Hg. (b) The central retinal artery (CRA) and its branches, long posterior ciliary artery (LPCA), choroid (Cr) and retinal arterioles (RA) and venules (RV) are labeled with arrows.

velocity profiles were also observed, becoming more evident as velocity was increased. Given that the MB concentration and imaging time remained constant during controlled velocity changes, the density of the MB tracks also increased as velocity increased.

3.2. In Vivo Rat Eye Vasculature Imaging

The ROI (i.e., LPCAs and CRA) ultrasound depth ranged from 7 mm to 10 mm, with further post-processing cropping to a total vertical imaging height of approximately 3 mm. Representative reconstructed vasculature images are shown in Fig. 4, including power doppler, bi-directional and velocity vascular images. Specific vessels can be located from these images based on the known angioarchitecture of the rat eye (Fig. 4b), including the LPCA and its branches, CRA, retinal arterioles, choroid, retinal venules, and ophthalmic artery. Venules were clearly differentiated from arterioles based on flow direction and velocity. The SRULM images produced vessel measurements with full width at half maximum (FWHM) as low as 20 μm as seen in Fig. 5. The mean diameters of the LPCA and retinal arterioles were $139.8 \pm 20.6 \mu\text{m}$ and $50.0 \pm 6.4 \mu\text{m}$, respectively. The mean arterial velocities at an IOP of 10 mm Hg within the ophthalmic artery, LPCA, LPCA primary branches, CRA, and retinal arterioles were 22.5 ± 4.2 , 30.1 ± 4.3 , 21.7 ± 3.8 , 21.5 ± 3.8 , and $14.7 \pm 3.3 \text{ mm/s}$, respectively. The mean velocity within the retinal venules was $10.7 \pm 3.1 \text{ mm/s}$ and CRV was $13.7 \pm 4.6 \text{ mm/s}$ at an IOP of 10 mm Hg. A reduction in CNR as seen in Fig. 6 was noted over time as MBs were rapidly cleared from the vasculature.

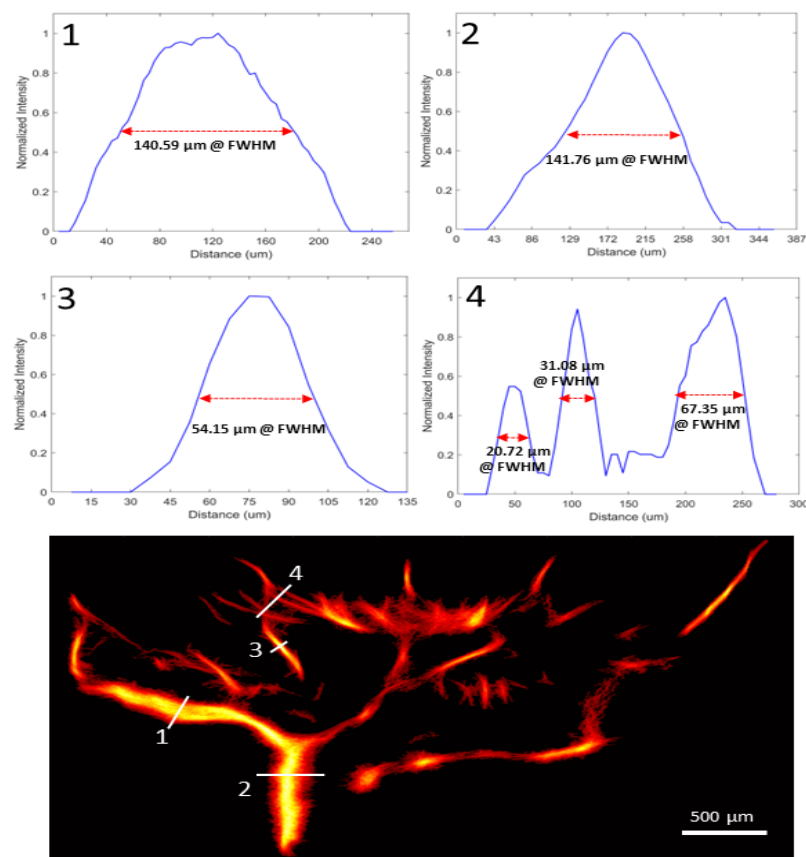


Figure 5. Vasculature density image of representative eye at 10 mm Hg (bottom). The 1D cross-sectional intensity profile of the four line markers (top) with corresponding full width at half maximum measurements (FWHM).

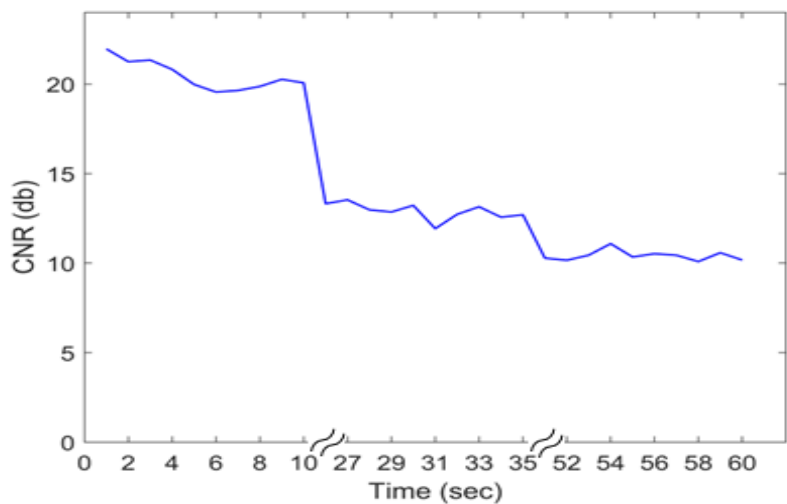


Figure 6. The contrast to noise ratio (CNR) calculate for each set of 1,000 frames following microbubble injection. A significant drop in the CNR was noted after the first 10,000 frames (10 seconds).

3.3. Vascular Perfusion Changes with Elevated IOP

The mean velocity of selected vessels as IOP was incrementally increased are shown in Fig. 7. Vascular density also reduced at IOP levels greater than 30 mm Hg. At IOP magnitudes of 50-60 mm Hg, a reversal of the mean blood flow direction was noted in some arteries, as seen within the CRA in the bi-directional flow map at 50 mm Hg (Fig. 4h). Given the combination of flow reversal and reduced MB signal, particularly in the smaller arteries, the mean velocity at 60 mm Hg could only be calculated for the ophthalmic artery and LPCA. The greatest velocity reductions occurred within the retinal arterioles as IOP was elevated, with a mean reduction of 46.7% in velocity at an IOP of 50 mm Hg compared to 10 mm Hg. Although several retinal arterioles and venules were no longer visible at IOP magnitudes of 50 to 60 mm Hg, major arteries (e.g., CRA, LPCA) remained visible at the maximum IOP of 60 mm Hg. The percent reduction in perfusion velocity from the baseline IOP of 10 mm Hg for the LPCA is shown in Fig. 8. A statistically significant percent

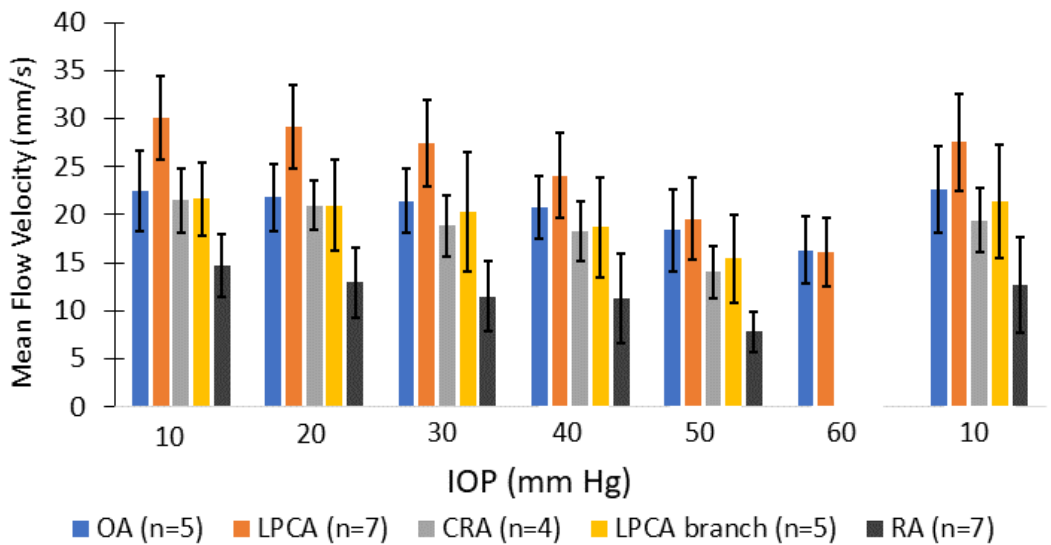


Figure 7. Mean absolute arterial perfusion velocity (error bars represent standard deviation) for selected vessels at each IOP level. OA = ophthalmic artery; LPCA = long posterior ciliary artery; CRA = central retinal artery; RA = retinal arteriole.

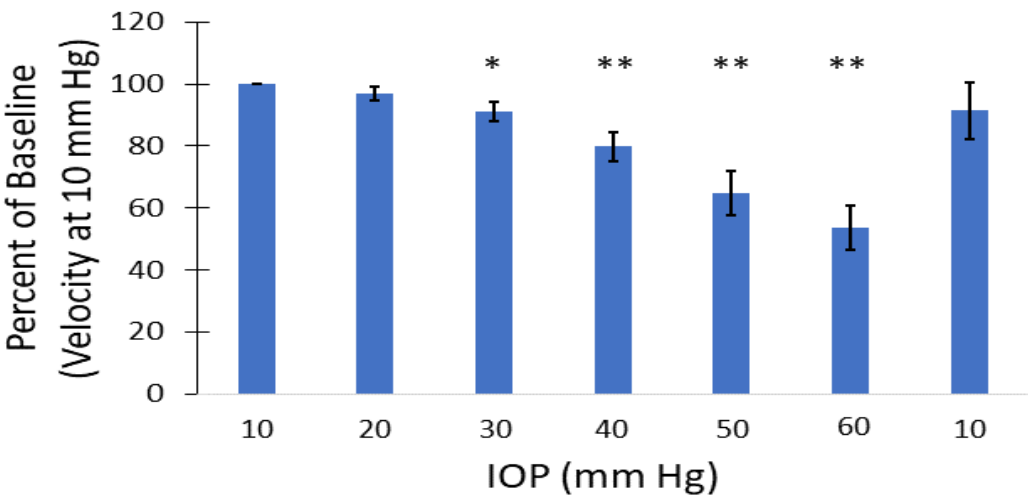


Figure 8. Mean percentile reduction in velocity of the long posterior ciliary artery with respect to baseline velocity at 10 mm Hg. * indicates $p \leq 0.05$; ** indicates $p \leq 0.001$.

reduction in the velocity occurred in the LPCA beginning at 30 mm Hg, with a $47.5 \pm 7.1\%$ reduction from baseline at the maximum IOP magnitude of 60 mm Hg. All perfusion velocities returned to baseline when IOP was lowered back to 10 mm Hg. A reduction in CNR was also noted at elevated IOP, particularly during diastole (see supplemental video S2 taken at 50 mm Hg).

3.4. 3D Volume Imaging

Using the vascular density images from each 2D scan, 3D data was reconstructed in Imaris Viewer (Oxford Instruments, Abingdon, UK) as seen in Fig. 9. The anatomy of the major vessels of the posterior eye are better visualized with the 3D reconstruction, demonstrating the ophthalmic artery, its trifurcation into the nasal and temporal LPCAs and the CRA. Further branches of these vessels can also be visualized.

4. Discussion

Using SRULM we were able to discriminate the morphology and flow velocity of several vessels of interest within and behind the posterior globe of the rat eye. The *in vivo* anatomical features of the vasculature from our study corroborated with prior *ex vivo* vascular casting and histological studies of the rat posterior globe angioarchitecture [35–37]. Immediately behind the posterior sclera and inferior to ONH insertion, the trifurcation of the ophthalmic artery into two LPCAs and CRA was evident during imaging and used as

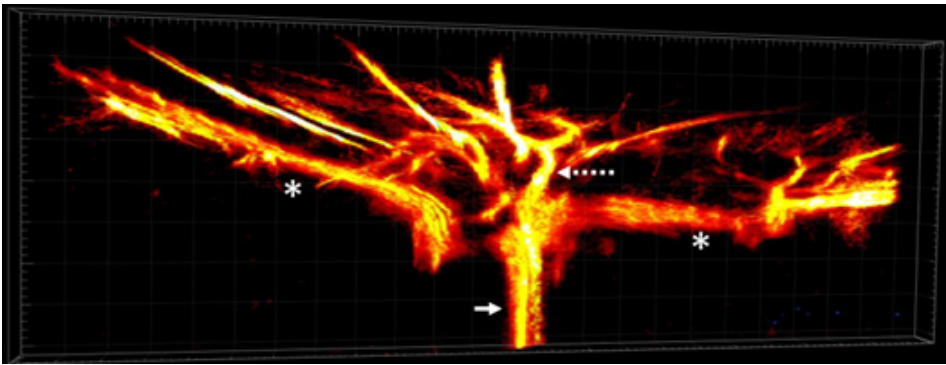


Figure 9. The 3D volume reconstruction of the major rat eye arteries including the long posterior ciliary arteries (*), ophthalmic artery (arrow), and the central retinal artery (dashed arrow).

an anatomical landmark. Using three measurements from each eye, the mean diameter of the LPCA in our study was $139.8 \pm 20.6 \mu\text{m}$. Bhutto *et al.*[36] using electron microscopy of vascular casts of the rat eye measured the LPCA diameters between 110 and 126 μm , with these vessels giving off 5-7 branches at a right angle to the choroid. The diameters of the retinal arteries ($50.0 \pm 6.4 \mu\text{m}$), originating from the ONH in a spoke wheel pattern, also appeared to be consistent with prior optical measurements which range from 30-60 μm [38,40]. It is important to note that in the rat, branches of the LPCA supply blood flow to the majority of the optic nerve transition zone, while in humans several short posterior ciliary arteries branch off the ophthalmic artery to penetrate the sclera and form the circle of Zinn-Haller to supply this region of the ONH.

The mean arterial velocities at 10 mm Hg in this study were comparable to prior studies in the rat using doppler ultrasound, SRULM and optical erythrocyte tracking techniques. Using arterial spectrograms, Silverman *et al.*[19] found a mean arterial velocity of $30.9 \pm 10.8 \text{ mm/s}$ at 10 mm Hg within the LPCA in the rat eye. Morisset *et al.*[28], utilizing SRULM, measured flow velocities of 25 mm/s in the ophthalmic artery, 30-40 mm/s in the LPCAs and 20 mm/s in the CRA. First-order arterioles in their study had velocities up to 23 mm/s. Tracking fluorescently labeled erythrocytes to measure *in vivo* flow velocity in the rat eye, Kornfield *et al.*[38] measured velocities ranging from 14-20 mm/s in retinal arterioles and 8-12 mm/s in venules depending on the location of the erythrocyte across the diameter of the vessel.

Several studies have shown statistically significant perfusion reductions to the retina and retrobulbar vasculature in the rat eye at IOP magnitudes starting around 30-50 mm Hg [19,40,43]. We also found that our SRULM method was sensitive to perfusion velocity changes of the posterior globe of the rat during IOP elevation. Mean arterial velocities within the LPCA were reduced by $47.5 \pm 7.1\%$ at an IOP of 60 mm Hg. Silverman's group showing a reduction of mean arterial velocity of approximately 65% in the LPCA for the same IOP elevation in Sprague-Dawley rats [19]. The smaller reduction in our study may be secondary to methodology or the location in which the velocity measurements of the LPCA were taken. The LPCA gradually penetrates the sclera as it travels along the globe [37]. The portion of the LPCA our measurements were derived from were posterior and external to the sclera. It is possible that measurements taken from the intraocular LPCA could demonstrate greater velocity reductions secondary to direct compression as IOP is elevated. The mean velocity of the retinal arterioles in our study reduced to 53.3% of baseline at an IOP of 50 mm Hg, which was similar to flow reductions of the same vessels in rats using optical measurements in these vessels [40]. We also found that perfusion velocity returned to normal when IOP was reduced back to 10 mm Hg from 60 mm Hg.

One of the more interesting and unexpected findings from this study was a notable reversal of blood flow in major arteries such as the CRA at IOP magnitudes of 50-60 mm Hg. This was not overly apparent in the analysis of the mean bi-directional track images but was clear when evaluating the post-processed videos of MB flow (supplementary video 2 at 50 mm Hg compared to supplementary video 1 at 10 mm Hg). For this reason, we attempted to use the synchronized ECG data available for one eye to extract systolic and diastolic frames to better assess this reversal of flow that appeared during diastole. Frames within the time period beginning at the peak of the T-wave and ending with the peak of the P were classified as systolic frames. Tracking was then performed separately on the systolic and diastolic frames. As seen in Fig. 10, a clear reversal of flow is present during diastole, but not systole, within the CRA at an IOP of 50 mm Hg. Given that the mean diastolic aortic blood pressure in rats anesthetized with 2-3% isoflurane is between 49.4 ± 23.1 (3%) and $62.5 \pm 30.1 \text{ mm Hg}$, as IOP elevated above 50 mm Hg, the diastolic perfusion pressure to the eye approaches zero [41]. This resulted in a reversal of blood flow direction in certain arteries during diastole as seen in Fig. 10. Blood pressure was not measured during our experiments and is planned for future studies. Qualitatively, it appeared that the major arteries with a more perpendicular penetration approach to the sclera (e.g., CRA) underwent flow reversal more often compared to the LPCAs, which enter

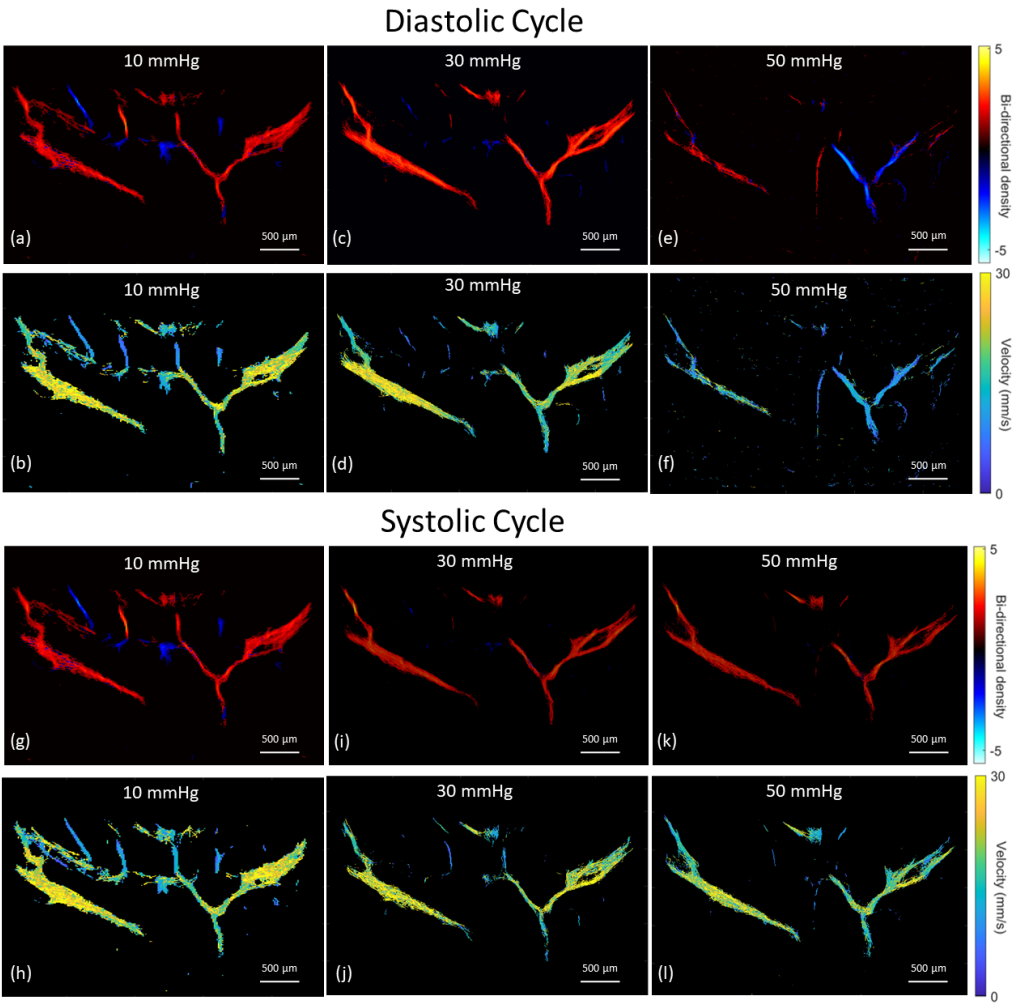


Figure 10. Bi-directional flow and velocity images reconstructed using microbubble tracks extracted from the systolic and diastolic frames defined by cutoffs ranges of the synchronized electrocardiogram readings. Diastolic images are shown in the top two rows for IOP magnitudes of (a & b) 10 mm Hg, (c & d) 30 mm Hg and (e & f) 50 mm Hg. Systolic images are shown in the bottom two rows for IOP magnitudes of (g & h) 10 mm Hg, (i & j) 30 mm Hg and (k & l) 50 mm Hg.

the sclera gradually at an oblique angle [37]. We also found a reduction in the CNR of the MBs at IOP magnitudes of 50-60 mm Hg. This was particularly evident during diastole (Supplementary Video 2), when the MB flow slowed and reversed direction. The reduced contrast may be resultant from a combination of reduced volume of MBs and constraints in MB expansion as vessels are compressed.

Reversal of blood flow with IOP elevation has been seen in human retinal arteries with central retinal vein occlusions and elevated IOP using laser doppler holography [42]. Consistent with our study, using visible light optical coherence tomography, reversal of retinal arterial blood flow was noted in 4 month old Brown Norway rats at IOP magnitudes of 50 to 60 mm Hg [43]. Interestingly, retinal function in rats measured via electroretinograms (ERGs) appears to remain normal during acute IOP elevations up to 50 to 60 mm Hg despite reductions in blood flow [44]. This phenomenon is likely related to increased oxygen exchange at lower flow rates, as the difference between oxygenation of the arterial and venous retinal vessels increases exponentially beginning at IOP magnitudes of 30-40 mm Hg [43]. However, the reversal of arterial blood flow occurring around 50 mm Hg may indicate a tipping point for inducing tissue hypoxia, resulting in the ERG changes seen at

these IOP levels. Future studies incorporating measurements of tissue hypoxia or ischemic damage may provide insight into this phenomena.

One of the major limitations of our SRULM technique is its inability to measure volumetric flow rates. We have demonstrated the ability to obtain 3D volumes, however, this is simply a volumetric reconstruction of 2D data. More recent use of 2D array transducers have been utilized for microvasculature mapping of the brain in 3D, allowing the ability to track MBs in all dimensions [45]. The 2D limitation of this technique also makes evaluating velocity changes with acutely elevated IOP via needle cannulation experimentally difficult, as slight shifts in the location with IOP elevation may reduce the repeatability of the scanning plane. Similarly, repeating measurements at the same ROI during longitudinal studies without the aid of registered 3D volumes would be difficult. For this reason, future experiments will utilize 3D data collection in order to confirm the repeatability of the ROI and investigate volumetric flow. Experimentally, we found that shadowing from the lens of the rat eye sometimes limited imaging the entire vasculature surrounding the ONH. We partially overcame this by imaging at an inferior to superior angle, however, removal of the superior orbital bone may provide the best visualization of the entire ONH region. Injection of the MB contrast agent greatly aided in increasing the CNR during imaging. However, the CNR reduced during image acquisition as the perfluoropropane MBs used in these experiments were cleared relatively quickly from the rat, requiring injection prior to every 10,000 frame collection. Future work will utilize perfluorobutane MBs to reduce the frequency of injections during imaging acquisition.

5. Conclusions

We present a novel approach for ocular vascular imaging in rodent eyes with the ability to quantify vascular perfusion velocities that cannot be measured with current optical techniques. Morphological and functional results were consistent to prior studies that characterized the vasculature of the rat eye. We demonstrated that this technique is capable of measuring the changes in ocular blood flow as IOP is elevated. The relatively short image acquisition time provides the potential for 3D applications that will improve anatomical localization of the angioarchitecture around the rat ONH. The penetration depth compared to optical techniques (e.g., optical coherence tomography and laser doppler flowgraphy) and improved resolution compared to standard doppler ultrasound provides the potential to assess the influence of IOP on ocular blood flow in addition to quantifying potential therapeutics with the goal of increasing perfusion to the eye.

Author Contributions: Conceptualization, J.P., H.U. and B.M.; methodology, H.U., J.P.; software, H.U. and S.C.; validation, S.C., H.U.; formal analysis, J.P.; investigation, J.P. and H.U.; resources, B.M. and J.P.; data curation, J.P. and B.M.; writing—original draft preparation, J.P.; writing—review and editing, J.P., H.U.; visualization, J.P. and H.U.; supervision, J.P.; project administration, J.P., B.M. ; funding acquisition, J.P.. All authors have read and agreed to the published version of the manuscript

Funding: This research was supported in part by the National Institute of Health (NIH) under grant COBRE P20GM144230-01

Institutional Review Board Statement: The animal study protocol was approved by West Virginia University Institutional Animal Care and Use Committee (IACUC), USA (protocol code 2110047755.2, 7 December 2021)

Informed Consent Statement: Not applicable.

Data Availability Statement: : The data presented in this study are available on request from the corresponding author.

Conflicts of Interest: The authors declare no conflict of interest. The funders had no role in the design of the study; in the collection, analyses, or interpretation of data; in the writing of the manuscript; or in the decision to publish the results.

References

1. Burgoyne C. F.; Downs J. C.; Bellezza A. J.; Suh J. K. F.; Hart R. T. The optic nerve head as a biomechanical structure: a new paradigm for understanding the role of IOP-related stress and strain in the pathophysiology of glaucomatous optic nerve head damage. *Prog. Retinal Eye Res.* **2005**, 24, 39-73.

2. Chuangsuwanich T.; Hung P. T.; Wang X.; Liang L. H.; Schmetterer L.; Boote C.; Girard M. J. A. Morphometric, hemodynamic, and biomechanical factors influencing blood flow and oxygen concentration in the human lamina cribrosa. *Invest. Ophthalmol. Vis. Sci.* **2020**, 61, 3.

3. Tielsch J. M.; Katz J.; Sommer A.; Quigley H. A.; Javitt J. C. Hypertension, perfusion pressure, and primary open-angle glaucoma: a population-based assessment. *Arch. Ophthalmol.* **1995**, 113, 216-221.

4. Bonomi L.; Marchini G.; Marraffa M.; Bernardi P.; Morbio R.; Varotto A. Vascular risk factors for primary open angle glaucoma: the Egna-Neumarkt Study. *Ophthalmology* **2000**, 107, 1287-1293.

5. Quigley H. A.; West S. K.; Rodriguez J.; Munoz B.; Klein R.; Snyder R. The prevalence of glaucoma in a population-based study of Hispanic subjects: Proyecto VER. *Arch. Ophthalmol.* **2001**, 119, 1819-1826.

6. Leske M. C.; Wu S. Y.; Hennis A.; Honkanen R.; Nemesure B. Risk factors for incident open-angle glaucoma: the Barbados Eye Studies. *Ophthalmology* **2008**, 115, 85-93.

7. Memarzadeh F.; Ying-Lai M.; Chung J.; Azen S. P.; Varma R. Blood pressure, perfusion pressure, and open-angle glaucoma: the Los Angeles Latino Eye Study. *Invest. Ophthalmol. Vis. Sci.* **2010**, 51, 2872-2877.

8. Lee E. J.; Kim J. A.; Kim T. W. Influence of choroidal microvasculature dropout on the rate of glaucomatous progression: a prospective study. *Ophthalmol. Glauc.* **2020**, 3, 25-31.

9. Shin J. W.; Sung K. R.; Uhm K. B.; Jo J.; Moon Y.; Song M. K.; Song J. Y. Peripapillary microvascular improvement and lamina cribrosa depth reduction after trabeculectomy in primary open-angle glaucoma. *Invest. Ophthalmol. Vis. Sci.* **2017**, 58, 5993-5999.

10. Kim C. Y.; Lee E. J.; Kim J. A.; Kim H.; Kim T. W. Progressive retinal nerve fibre layer thinning and choroidal microvasculature dropout at the location of disc haemorrhage in glaucoma. *Brit. J. Ophthalmol.* **2021**, 105, 674-680.

11. Kim J.-A.; Kim T.-W.; Lee E. J.; Girard M. J.; Mari J. M. Microvascular changes in peripapillary and optic nerve head tissues after trabeculectomy in primary open-angle glaucoma. *Invest. Ophthalmol. Vis. Sci.* **2018**, 59, 4614-4621.

12. Vinnett A.; Kandukuri J.; Le C.; Cho K.-A.; Sinha A.; Asanad S.; Samuel A.; Ginger T.; Victoria C.; Abhishek R.; Saeedi O. J. Dynamic alterations in blood flow in glaucoma measured with laser speckle contrast imaging. *Ophthalmol. Glauc.* **2022**, 5, 250-261.

13. Quigley H. A.; Addicks E. M. Regional differences in the structure of the lamina cribrosa and their relation to glaucomatous optic nerve damage. *Arch. Ophthalmol.* **1981**, 99, 137-143.

14. Quigley H. A. Optic nerve damage in human glaucoma, II: The site of injury and susceptibility of damage. *Arch. Ophthalmol.* **1981**, 99, 635-649.

15. Martínez A.; Sánchez M. Predictive value of colour Doppler imaging in a prospective study of visual field progression in primary open-angle glaucoma *Acta Ophthalmol. Scand.* **2005**, 83, 716-722.

16. Abegão Pinto L.; Willekens K.; Van Keer K.; Shibeshi A.; Molenberghs G.; Vandewalle E.; Stalmans I. Ocular blood flow in glaucoma—the Leuven Eye Study. *Acta Ophthalmol.* **2016**, 94, 592-598.

17. Garhöfer G.; Fuchsjäger-Mayrl G.; Vass C.; Pemp B.; Hommer A.; Schmetterer L. Retrobulbar blood flow velocities in open angle glaucoma and their association with mean arterial blood pressure. *Invest. Ophthalmol. Vis. Sci.* **2010**, 51, 6652-6657.

18. Plange N.; Remky A.; Arend O. Colour Doppler imaging and fluorescein filling defects of the optic disc in normal tension glaucoma. *Brit. J. Ophthalmol.* **2003**, 87, 731-736.

19. Silverman R. H.; Urs R.; Tezel G.; Yang X.; Nelson I.; Ketterling J.A. Retrobulbar blood flow in rat eyes during acute elevation of intraocular pressure. *Exp. Eye Res.* **2021**, 207.

20. Christensen-Jeffries K.; Couture O.; Dayton P. A.; Eldar Y. C.; Hynynen K.; Kiessling F.; O'Reilly M.; Pinton G. F.; Schmitz G.; Tang M. X.; Tanter M.; van Sloun R. J. G. Super-resolution ultrasound imaging. *Ultrasound Med. Biol.* **2020**, 46, 865-891.

21. Huang C.; Zhang W.; Gong P.; Lok U. W.; Tang S.; Yin T.; Zhang X.; Zhu L.; Sang M.; Song P.; Zheng R. Super-resolution ultrasound localization microscopy based on a high frame-rate clinical ultrasound scanner: An in-human feasibility study. *Phys. Med. Biol.* **2021**, 66, 8.

22. Dencks S.; Piepenbrock M.; Opacic T.; Krauspe B.; Stickeler E.; Kiessling F.; Schmitz G. Clinical pilot application of super-resolution US imaging in breast cancer. *IEEE Trans. Ultrason. Ferroelectr. Freq. Control* **2019**, 66, 517-526.

23. Lin F.; Shelton S. E.; Espindola D.; Rojas J. D.; Pinton G.; Dayton P. A. 3-D ultrasound localization microscopy for identifying microvascular morphology features of tumor angiogenesis at a resolution beyond the diffraction limit of conventional ultrasound. *Theranostics* **2017**, 7, 196-204.

24. Ghosh D.; Xiong F.; Sirsi S. R.; Mattrey R.; Brekken R.; Kim J.-W.; Hoyt K. Monitoring early tumor response to vascular targeted therapy using super-resolution ultrasound imaging. in *Proc. IEEE Int. Ultrason. Symp.* **2017**, 1-4.

25. Chen Q.; Yu J.; Rush B. M.; Stocker S. D.; Tan R. J.; Kim K. Ultrasound super-resolution imaging provides a noninvasive assessment of renal microvasculature changes during mouse acute kidney injury. *Kidney Int.* **2020**, 98, 355-365.

26. Andersen S. B.; Hoyos C. A. V.; Taghavi I.; Gran F.; Hansen K. L.; Sørensen C. M.; Nielsen M. B. Super-resolution ultrasound imaging of rat kidneys before and after ischemia-reperfusion. in *Proc. Int. Ultrason. Symp.* **2019**, 1169-1172.

27. Qian X.; Huang C.; Li R.; Song B. J.; Tchelepi H.; Shung K. K.; Shigao C.; Humayun M. S.; Zhou Q. Super-resolution ultrasound localization microscopy for visualization of the ocular blood flow. *IEEE Trans. Biomed. Eng.* **2022**, 69, 1585-1594.

28. Morisset C.; Dizeux A.; Larrat B.; Selingue E.; Boutin H.; Picaud S.; Deffieux T. Retinal functional ultrasound imaging (rfUS) for assessing neurovascular alterations: a pilot study on a rat model of dementia. *Sci. Rep.* **2022**, *12*. 456

29. Arnal B.; Baranger J.; Demene C.; Tanter M.; Pernot M. In vivo real-time cavitation imaging in moving organs. *Phys. Med. Bio.* **2017**, *62*, 843-857. 457

30. Foroosh H.; Zerubia J. B.; Berthod M. Extension of phase correlation to subpixel registration. *IEEE Trans. Imag. Process* **2002**, *11*, 188-200. 458

31. Huang L.; Zhang J.; Hao Y.; Jing L.; He Q.; Wang G.; Luo J. Spatiotemporal nonlocal means based denoising for ultrasound microvascular imaging. in *Proc. IEEE Int. Ultrason. Symp.* **2021**, 1-4. 459

32. Song P.; Trzasko J. D.; Manduca A.; Huang R.; Kadirvel R.; Kallmes D. F.; Chen S. Improved super-resolution ultrasound microvessel imaging with spatiotemporal nonlocal means filtering and bipartite graph-based microbubble tracking. *IEEE Trans. Ultrason. Ferroelectr. Freq. Control* **2017**, *65*, 149-167. 460

33. Heiles B.; Chavignon A.; Hingot V.; Lopez P.; Teston E.; Couture O. Performance benchmarking of microbubble-localization algorithms for ultrasound localization microscopy *Nature Biom. Eng.* **2022**, *6*, 605-616. 461

34. Tang S.; Song P.; Trzasko J. D.; Lowerison M.; Huang C.; Gong P.; Chen S. Kalman filter-based microbubble tracking for robust super-resolution ultrasound microvessel imaging. *IEEE Trans. Ultrason. Ferroelectr. Freq. Control* **2020**, *67*, 1738-1751. 462

35. Morrison J.C.; Johnson E. C.; Cepurna W. O.; Funk R. H. Microvasculature of the rat optic nerve head. *Invest. Ophthalmol. Vis. Sci.* **1999**, *40*, 1702-1709. 463

36. Bhutto I. A.; Amemiya T. Microvascular architecture of the rat choroid: corrosion cast study. *The Anatomical Record: An Official Publication of the American Association of Anatomists* **2001**, *264*, 63-71. 464

37. Pazos M.; Yang H.; Gardiner S. K.; Cepurna W. O.; Johnson E. C.; Morrison J. C.; Burgoyne C. F. Rat optic nerve head anatomy within 3D histomorphometric reconstructions of normal control eyes. *Exp. Eye Res.* **2015**, *139*, 1-12. 465

38. Kornfield T. E.; Newman E. A. Measurement of retinal blood flow using fluorescently labeled red blood cells. *Eneuro* **2015**, *2*. 466

39. Wajer S. D.; Taomoto M.; McLeod D. S.; McCally R. L.; Nishiwaki H.; Fabry M. E.; Luty G. A. Velocity measurements of normal and sickle red blood cells in the rat retinal and choroidal vasculatures. *Microvasc. Res.* **2000**, *60*, 281-293. 467

40. Zhi Z.; Cepurna W.; Johnson E.; Shen T.; Morrison J.; Wang R. K. Volumetric and quantitative imaging of retinal blood flow in rats with optical microangiography. *Biomed. Opt. Express* **2011**, *2*, 579-591. 468

41. Yang C.-F.; Chen M. Y.-C.; Chen T. I.; Cheng C. F. Dose-dependent effects of isoflurane on cardiovascular function in rats. *Tzu Chi Med. J.* **2014**, *26*, 119-122. 469

42. Puyo L.; Paques M.; Atlan M. Retinal blood flow reversal quantitatively monitored in out-of-plane vessels with laser Doppler holography. *Sci. Rep.* **2021**, *11*. 470

43. Pi S.; Hormel T. T.; Wei X.; Cepurna W.; Camino A.; Guo Y.; Jia Y. Monitoring retinal responses to acute intraocular pressure elevation in rats with visible light optical coherence tomography. *Neurophotonics* **2019**, *6*. 471

44. Bui B. V.; He Z.; Vingrys A. J.; Nguyen C. T.; Wong V. H.; Fortune B. Using the electroretinogram to understand how intraocular pressure elevation affects the rat retina. *J. Ophthalmol.* **2013**. 472

45. Demeulenaere O.; Bertolo A.; Pezet S.; Ialy-Radio N.; Osmanski B.; Papadacci C.; Pernot M. In vivo whole brain microvascular imaging in mice using transcranial 3D Ultrasound Localization Microscopy. *EBioMedicine* **2022**, *79*. 473