

Higher penetration depth of 1064 nm compared to 905 nm laser light into biological tissue is only relevant for surface layers and insignificant for 10 mm tissue depth onwards

Leon Kaub and Christoph Schmitz *

Department of Anatomy II, Faculty of Medicine, LMU Munich, 80336 Munich, Germany

* Correspondence: christoph.schmitz@med.uni-muenchen.de; Tel.: +49-89-2180-72620

Abstract: The choice of parameters for laser beams used in the treatment of musculoskeletal diseases is of great importance. First, to reach high penetration depths into biological tissue and, secondly, to achieve the required effects on a molecular level. The penetration depth depends on the wavelength since there are multiple light-absorbing and scattering molecules in tissue with different absorption spectra. The present study is the first comparing the penetration depth of 1064 nm laser light with light of a smaller wavelength (905 nm) using high-fidelity laser measurement technology. Penetration depths in two types of tissue (porcine skin and bovine muscle) were investigated. The transmittance of 1064 nm light through both tissue types was consistently higher than of 905 nm light. The largest differences (up to 5.9%) were seen in the upper 10 mm of tissue, while the difference vanished with increasing tissue thickness. The higher penetration was most likely due to a combination of lower absorption in hemoglobin and less scattering at larger wavelengths, and not due to absorption in melanin. Overall, differences in penetration depth were comparably small and high peak power and short pulse lengths of laser light seem to be more important to efficiently treat deep musculoskeletal diseases.

Keywords: laser therapy; musculoskeletal system; tissue penetration depth

1. Introduction

There is increasing evidence that patients suffering from musculoskeletal diseases can benefit from treatment with near-infrared (NIR) laser light [1,2]. It has been hypothesized that NIR laser light can reduce pain, decrease inflammation and stimulate tissue healing, which is favorable in the treatment of various musculoskeletal diseases [1–5]. NIR light is used in laser therapy because the NIR wavelengths coincide with the so-called therapeutic window, in which light absorption in biological tissue is comparably low and the penetration depth therefore accordingly large [6]. However, there are also differences in the penetration depth within this therapeutic window that depend on the exact absorption and scattering spectra of the tissue [7].

One direct possibility to investigate the penetration depth in biological tissue is to measure the transmission of a laser light source through tissue specimens of varying thickness (e.g., [8–10]). In a previous study [8], the penetration of NIR laser light from two laser therapy devices (LTDs) into several different animal tissues was compared. The two LTDs were operated with the same wavelength (905 nm), but had differences in other beam parameters such as pulse length, peak power and beam profiles. The differences in these parameters had only little effect on the penetration of the average light power [8]. One of the LTDs investigated in this previous study was capable to emit laser beams with two additional, different wavelengths (800 nm and 970 nm). A comparison of the different wavelengths showed that 800 nm and 905 nm light reached similar penetration depths, while 970 nm light came significantly less deep. This was attributed to a peak in the absorption spectrum of water at 976 nm [8].

Other commercially available LTDs offer laser light with a wavelength of 1064 nm. Some authors have argued that light with this wavelength has a higher penetration depth

than light with a lower wavelength [11]. However, there is a lack of information regarding the penetration depth of light with a wavelength greater than 1000 nm into biological tissue [12]. Furthermore, one has to keep in mind that light that is used in the treatment of musculoskeletal diseases needs to transmit through the skin barrier, which consists of the epidermis, the dermis and the subcutaneous layer. Depending on the treatment target, the light needs to additionally transmit through some amount of other tissue such as muscle tissue. The light then needs to reach not only the surface layer of the target structure but also to transmit into the target structure. The main absorbing molecules that need to be overcome in order for the light to reach deep target structures are generally thought to be water, lipids, melanin and hemoglobin [13]. Absorption spectra of these molecules have been investigated in many studies [7]. The absorption of light in lipids is approximately equal for the two wavelengths 905 nm and 1064 nm [7,14]. Since the absorption of light in melanin and hemoglobin decreases with increasing wavelength, it is often concluded that 1064 nm light can penetrate tissue deeper than light with a shorter wavelength [12]. However, the absorption of water needs to be considered, too. The absorption of water at 1064 nm is approximately two times stronger than at 905 nm [15], which partially compensates the lower absorption of melanin and hemoglobin. Since melanin is only found in the epidermis but water is ubiquitously found in most tissues, it cannot directly be concluded that 1064 nm light penetrates all tissues better than lower wavelengths when comparing these two molecules. In addition, there are large differences in the melanin content of skin tissue between different ethnicities and even between different body parts of an individual [16]. In contrast, hemoglobin is also ubiquitous in tissue, and the lower absorption of light in hemoglobin at higher wavelengths could lead to a difference in the total absorption of tissue. Measurements of the absorption spectrum and penetration depths of 1064 nm light into real tissue are missing.

The present study tested the hypothesis that laser light with a wavelength of 1064 nm penetrates skin tissue better than 905 nm laser light, while there is no difference between these two wavelengths in the ability to penetrate into other tissues. This would be of high relevance for treatments of musculoskeletal disorders with laser light, since any light that is supposed to treat pathologies that are deep underneath the skin needs to be able to overcome the skin barrier.

It should be mentioned that many commercially available LTDs emit laser light that differs in a variety of parameters. Besides different wavelengths, LTDs often offer continuous wave (CW) and/or pulsed wave (PW) laser light. Pulsed lasers allow higher peak powers and can reach into deep layers of tissue with less undesired surface heating than CW lasers [2]. In general, pulsed laser light tends to lead to better clinical results than CW laser light [17]. On the other hand, there are also large differences between the different ways LTDs generate pulsed laser light. Some LTDs emit ultra-short pulses combined with large peak powers, while other LTDs emit very long pulses with peak powers that are only slightly larger than the average power [8]. Two LTDs that both offer pulsed laser light might therefore emit highly different laser beams, which could lead to different and/or less effective treatments. The LTDs used for the present study were therefore thoroughly characterized before they were employed for the penetration depth measurements.

2. Materials and Methods

Penetration depths were measured for porcine skin tissue and bovine muscle tissue following the protocol of an earlier study [8]. The porcine tissue consisted of skin, subcutaneous fat and muscle tissue. The proportions of each layer were approximately equal for all porcine tissue specimens (skin, 3 mm; subcutaneous fat, 6 mm; muscular tissue, remaining thickness). All porcine tissue specimens contained the skin layer. The bovine tissue contained mainly muscle tissue. The tissue specimens were freshly purchased in a butcher shop in Munich (Germany); thus, no ethics approval or registration of the present study with authorities was required. From each type of tissue, seven slices with varying thicknesses were cut ranging from 3.3 mm to 21.7 mm (porcine tissue) and from 2.1 mm

to 17.0 mm (bovine tissue). The thickness of each specimen was determined before and after the penetration depth measurements using a medical ultrasound device (HS-3000, Honda Electronics, Toyohashi, Japan). Each measurement resulted from averaging the thicknesses at three positions. The mean of the two thickness measurements (before and after) was used for data analysis.

Two commercially available LTDs were used for the present study: (i) Dolorclast High Power Laser (Electro Medical Systems, Nyon, Switzerland) (hereafter: EMS laser) and (ii) BTL-6000 (BTL, Prague, Czech Republic) (hereafter: BTL laser). Both LTDs can be seen in the experimental setup for penetration depth measurements shown in Figure 1a. Specifications of the LTDs provided by their manufacturer are summarized in Table 1.

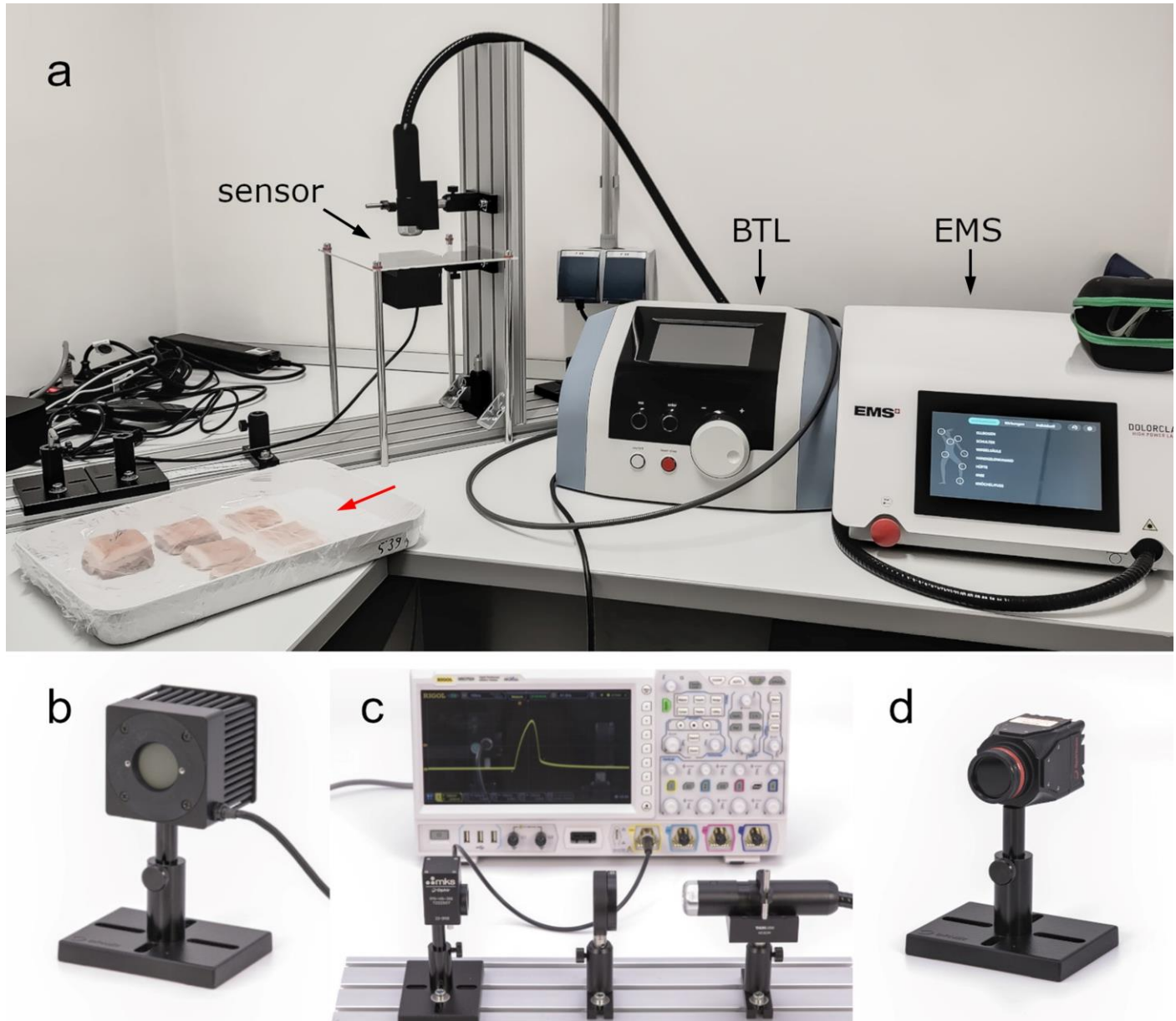


Figure 1: Equipment used in the present study: (a) experimental setup of penetration depth measurements showing both the BTL laser (BTL) and the EMS laser (EMS); the thermal power sensor (sensor) in its location for penetration depth measurements as well as the porcine tissue specimens (red arrow) are also shown; (b) thermal power sensor; (c) photodiode sensor connected to an oscilloscope measuring pulses emitted by the EMS laser; (d) beam profiling camera. Details are in the text. Panels b-d were modified from [8] with permission from the authors.

Table 1: Specifications of the two laser therapy devices investigated in the present study. Average power ($P_{average}$), peak power (P_{peak}), pulse length and repetition rate were provided by the manufacturers.

Laser therapy device	EMS laser	BTL laser
Wavelength [nm]	905	1064
Modes	PW	CW/PW/SP
max. $P_{average}$ [W]	1.2	12
P_{peak} [W]	300	12
Pulse length	100 ns	2.5 ms – 250 ms
Repetition rates [Hz]	5,000 – 40,000	1 – 100

Abbreviations: nm, nanometer; W, Watt; Hz, Hertz; PW, pulsed wave; CW, continuous wave; SP, single pulse.

The EMS laser was thoroughly investigated in two earlier studies [8,18]. For the characterization of the BTL laser, the same measurements as described in these studies [8,18] were performed in the present study. Three different sensors were used in the present study to characterize the BTL laser (c.f. [18]). Light power was measured using a thermal power sensor (Model 50(150)A-BB-26-PPS; Ophir Spiricon Europe GmbH, Darmstadt, Germany; Figure 1b) that was operated with software from the manufacturer (StarLab 3.62 Build 1; Ophir Spiricon Europe GmbH). Temporal profiles were recorded using a fast photodiode sensor (FPD-VIS300, Ophir Spiricon Europe GmbH) connected to an oscilloscope (MSO7024; Rigol Technologies Inc., Suzhou, China). The temporal profiles were recorded with an optical diffusor (DG20-220-MD, Thorlabs GmbH, Bergkirchen, Germany) in the beam line to protect the photodiode from large power densities (Figure 1c). A beam profiling camera (LT665; Ophir Spiricon Europe GmbH; Figure 1d) was used to record spatial intensity distributions. The camera was operated with software from the manufacturer (BeamGage Professional v6.17.1; Ophir Spiricon Europe GmbH). Beam profiles were extracted from the spatial intensity distributions using the same software.

For the penetration depth measurements, the thermal power sensor was placed underneath the specimen holder. The light emitter was pointing from above onto the specimen (see Figure 1a). Both LTDs were set to the maximum repetition rate. The EMS laser was set to 40 kHz, which resulted in 1.2 W measured average power. The BTL laser was set to a repetition rate of 100 Hz, a beam size of 1 cm² and a peak power of 6 W, which also resulted in a measured average power of 1.2 W (Figure 2).

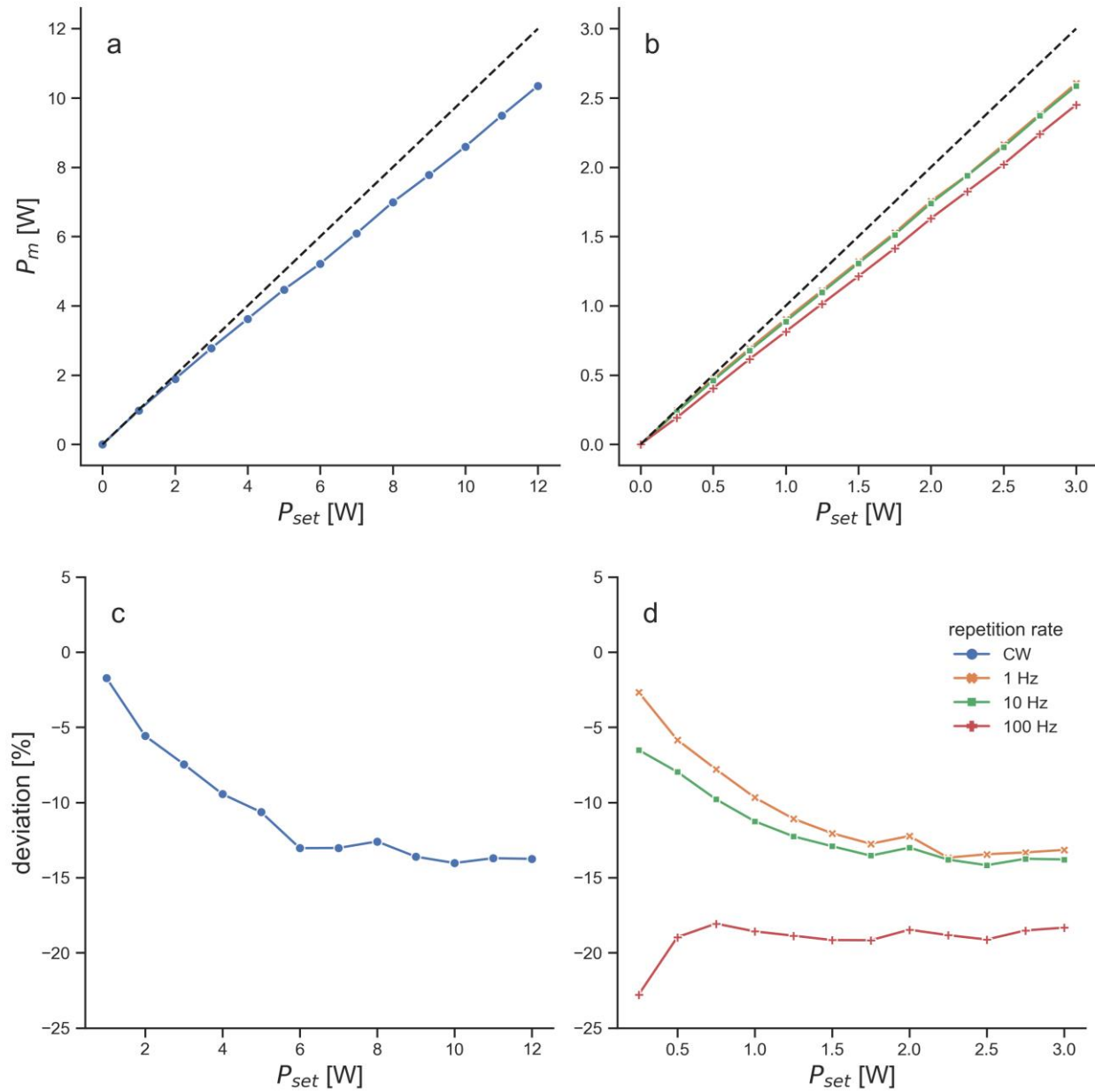


Figure 2: Power measurements of the BTL laser: **(a,b)** measured average power (P_m) for different power values set at the BTL laser (P_{set}). Black dashed lines in **(a,b)** illustrate ideal curves, in which the measured average power would equal the set power; **(c,d)** deviation in percent of P_m compared to P_{set} . Measurements are shown for continuous-wave (CW) mode **(a,c)** and for pulsed-wave (PW) mode at three different repetition rates **(b,d)**.

The BTL laser beam for the penetration depth measurements was slightly too large to be adequately measured with the thermal power sensor. Unfortunately, it was not possible to adapt the beam size of the BTL laser (addressed below). Therefore, a constant beam size of 20 mm had to be assumed for the empty measurements with this LTD. The transmittance measurements were used to compute penetration depths by fitting a curve according to the Beer-Lambert law using the method of least-squares. Since for the present study the sensor was located outside of the tissue, the correction method from [8] was used to correct for power losses that incurred due to reflections at the tissue – air interface. Penetration depths were then computed for the uncorrected and corrected data.

After measurements with the power sensor, the photodiode was used in the same position to record temporal profiles of the laser beams that transmitted through the

specimen. The signals recorded with the photodiode were all smoothed using a moving average with a window length of 100 samples.

All data analysis was done with self-written software using the programming language Python (version 3.9, Python Software Foundation, Delaware, MD, USA).

3. Results

The BTL laser in PW mode was modulated with a rectangular function and emitted light for 25% of the period (duty cycle of 25%), which made the pulse length a function of the repetition rate (Figure 3a). For a repetition rate of 100 Hz, as it was used for the penetration depth measurements, the pulse length was 2.5 ms (Figure 3b). The spatial intensity of the BTL laser followed a Gaussian distribution (Figure 3c). The BTL laser allowed setting the beam size from 1 cm² to 500 cm². However, regardless of the set beam size the spatial intensity distributions stayed constant as it can be seen in the measurements of horizontal beam profiles (Figure 3d). The camera images were also identical for all tested beam size settings. Therefore, the beam size setting of this device was not functional.

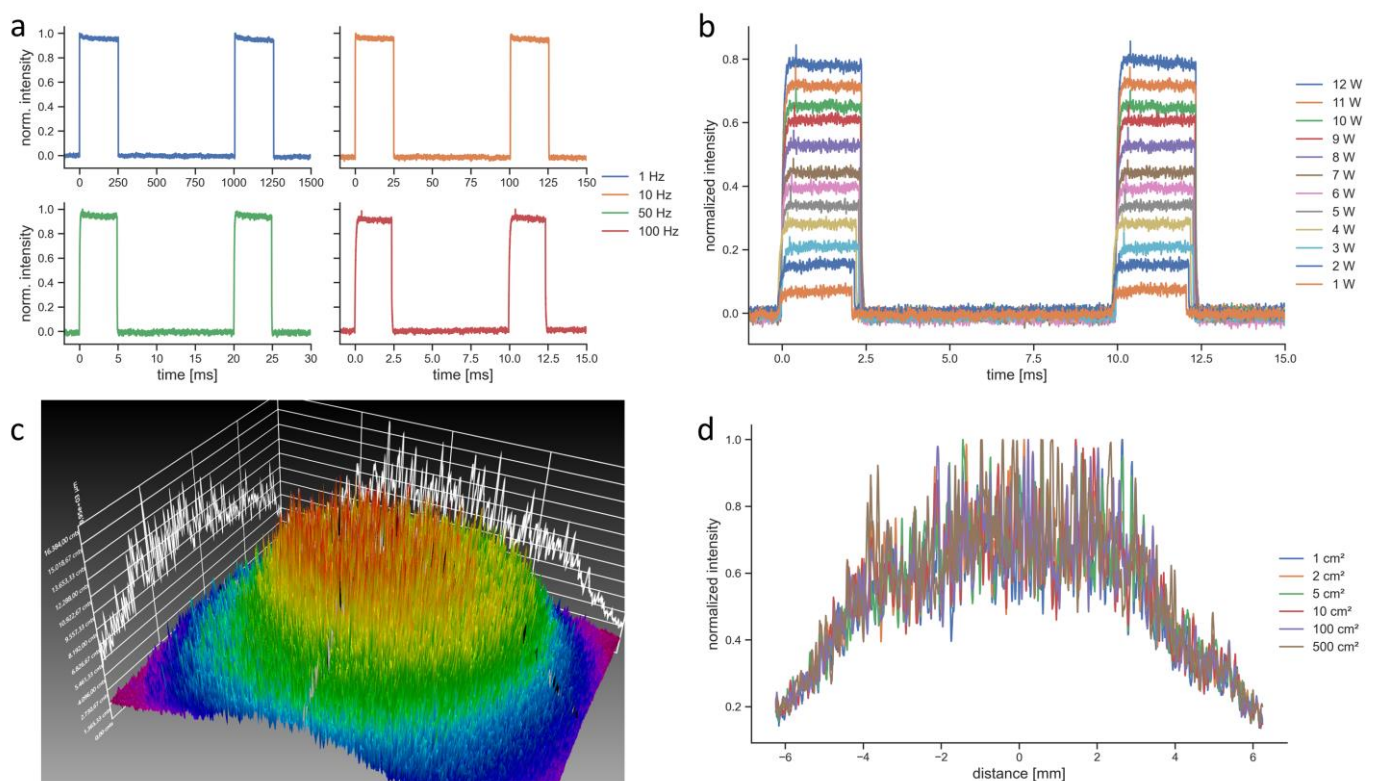


Figure 3: Characterization of the laser beam emitted by the BTL laser: **(a)** temporal profiles at different frequencies and the same peak power (12 W); **(b)** temporal profiles at the same frequency (100 Hz) at different values of peak power; **(c)** spatial intensity distribution; **(d)** beam profiles along the horizontal line for different set beam sizes (zero indicates the center of the spatial intensity profile shown in c).

The measured average power of the BTL laser was consistently below the set average power for all set values (Figure 2). At the repetition rate that was used for the penetration depth measurements, the measured power was approximately 19% below the set power throughout most of the set powers (Figure 2). This led to a setting of 6 W peak power (equals 1.5 W average power), in order to receive 1.2 W measured average power.

The BTL laser showed larger penetration depths than the EMS laser for both tissue types (Figure 4).

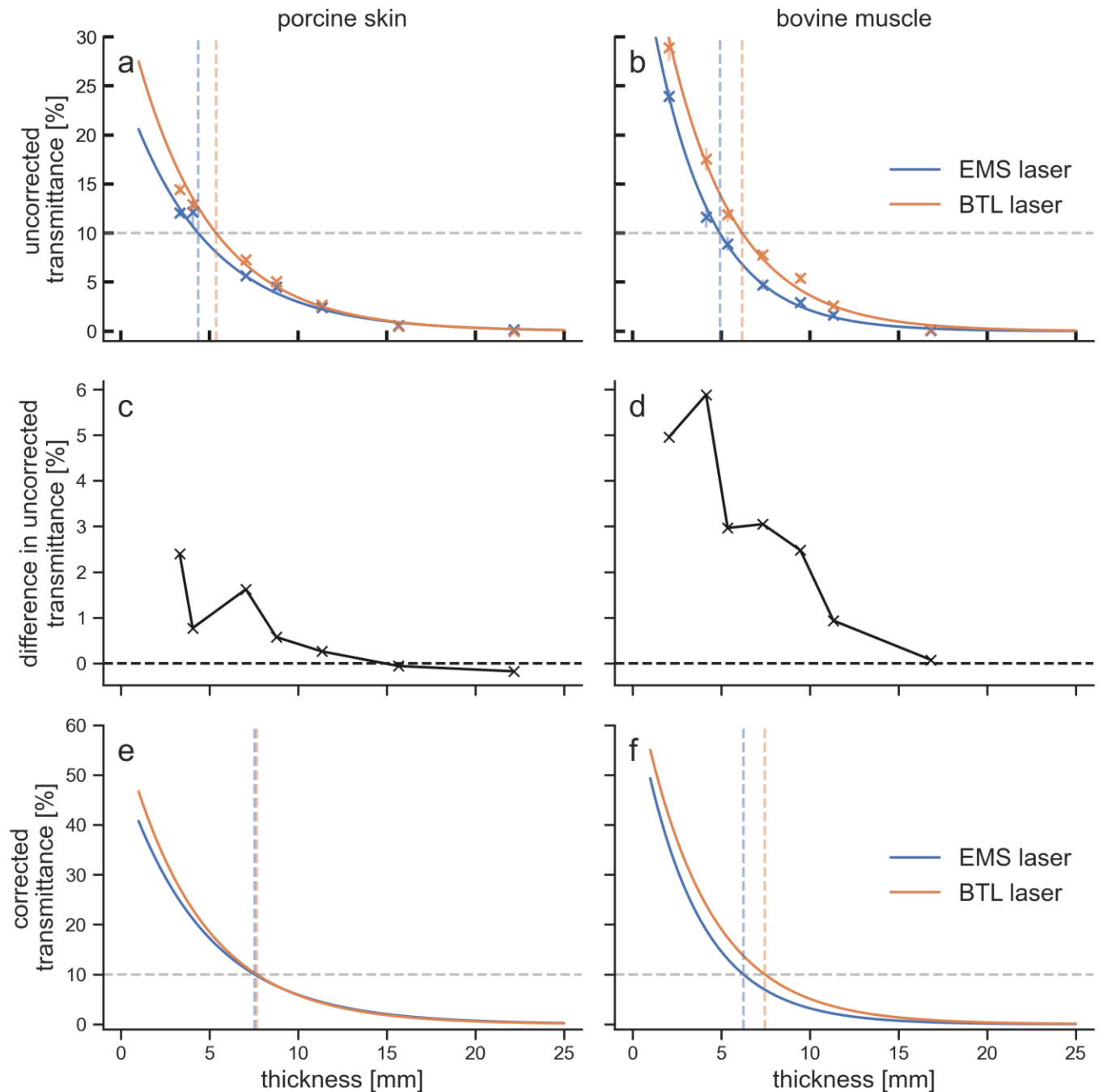


Figure 4: Penetration curves and differences in transmittance of the two LTDs (EMS laser, blue curves; BTL laser, orange curves) for the two tissues investigated: (a,c,e) porcine skin tissue; (b,d,f) bovine muscle tissue. Transmittance was plotted against specimen thickness for the uncorrected data (a,b), the difference between the two LTDs in the uncorrected transmittance (c,d) and the corrected data (e,f). 10% penetration depths are visualized in (a,b,e,f) by dashed vertical lines in the color of the LTD. The standard deviation of the measurements at each data point is given in (a,b) by vertical lines.

Especially for the upper 10 mm of tissue, the BTL laser achieved higher transmittances. The difference in transmittance between the EMS laser and the BTL laser decreased with increasing tissue thickness. The maximum difference in the uncorrected transmittances was 5.9% for bovine muscle tissue at 4.1 mm thickness and 2.4% for porcine skin tissue at 3.3 mm thickness. The differences were below 1% and therefore insignificant after 6.6 mm in porcine tissue and after 9.3 mm in bovine tissue. Each LTD penetrated the upper 5 mm of bovine tissue better than porcine tissue. The transmittance at 10 mm was for the

BTL laser still larger in bovine tissue compared to porcine tissue, while for the EMS laser it was smaller in bovine tissue. For thicknesses of 15 mm and 20 mm, differences in transmittance were within the measurement error.

The sensor had a noise level of 2 mW, which can be translated to 0.2% of transmittance. The mean standard deviation of the measurements for the four penetration curves was between 0.3% and 0.7%. In addition, the error in the thickness measurements was approximately 0.2 mm. The overall measurement error was to some extent compensated through the curve fitting that resulted in the penetration curves; however, an error of 1% can safely be assumed for the transmittance values. Values of the penetration depth for different percentages as well as transmittances at different tissue thicknesses are given in Table 2.

Table 2: Penetration depths and transmittances for the two laser therapy devices and both tissues. Values were computed from both uncorrected and corrected penetration curves.

Laser	Tissue	Penetration Depth [mm] for				Transmittance [%] at			
		15%	10%	5%	1%	5 mm	10 mm	15 mm	20 mm
uncorrected									
BTL laser	porcine skin	3.6	5.4	8.4	15.3	10.9	3.4	1.1	0.3
	bovine muscle	4.7	6.2	8.8	14.9	13.7	3.7	1.0	0.3
EMS laser	porcine skin	2.5	4.4	7.6	15.1	8.7	3.0	1.0	0.3
	bovine muscle	3.6	4.9	7.2	12.5	9.8	2.1	0.5	0.1
corrected									
BTL laser	porcine skin	5.9	7.7	10.7	17.6	18.5	5.8	1.8	0.6
	bovine muscle	5.9	7.5	10.1	16.2	19.1	5.1	1.4	0.4
EMS laser	porcine skin	5.7	7.5	10.8	18.3	17.3	5.9	2.0	0.7
	bovine muscle	4.9	6.3	8.5	13.8	14.6	3.2	0.7	0.2

For each specimen, the pulses of the transmitted laser light were recorded as temporal profiles (Figure 5). Since the photodiode that was used for these measurements could not measure absolute values, the profiles were normalized in two ways (c.f. [8]): first to the maximum of the signal that was recorded with the thinnest specimen of each tissue and, secondly, to the maximum of each individual signal. The pulses of the EMS laser were able to transmit through all specimens, and were still recordable after transmission through the thickest specimen of both tissues. The pulse amplitude decreased with tissue thickness, while the pulse shape and pulse length stayed constant. In contrast, the pulses of the BTL laser were recordable only for the thinnest specimen of each tissue. The maximum thickness for a signal that was measured was similar for both tissues (porcine skin, 6.6 mm; bovine muscle, 5.4 mm). Thicker specimen did not allow recordings of the BTL laser pulses, because they were below the noise level of the photodiode. The signals from the five specimens that were recorded with the BTL laser also showed that the amplitude decreased with tissue thickness and the pulse shape stayed constant.

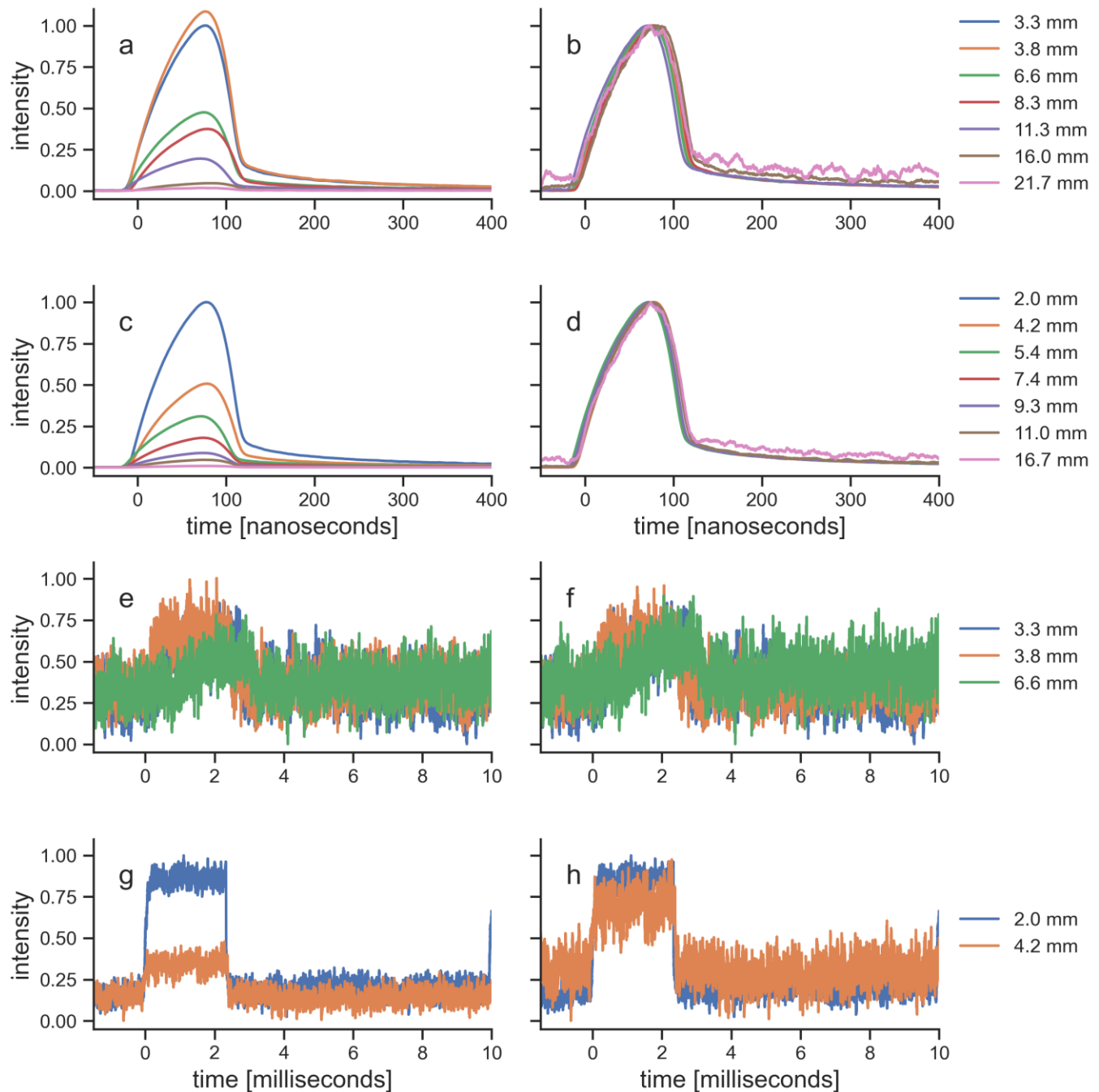


Figure 5: Recordings of laser pulses transmitted through tissue specimen: **(a,b)** EMS laser through porcine tissue; **(c,d)** EMS laser through bovine tissue; **(e,f)** BTL laser through porcine tissue; **(g,h)** BTL laser through bovine tissue. The recordings were normalized in two ways: **(a,c,e,g)** normalized to the overall maximum of each laser therapy device and tissue; **(b,d,f,h)** normalized to the individual maximum of each signal. All signals were smoothed using a moving average with a window length of 100 samples.

4. Discussion

This is the first study demonstrating that 1064 nm laser light penetrated the upper 10 mm of biological tissue better than 905 nm laser light. For deeper tissue layers, differences between the two wavelengths were insignificant. The same results were found for porcine skin and bovine muscle tissue. The hypothesis that 1064 nm light penetrates skin tissue, but not other tissues, better than 905 nm light was not confirmed. In contrast, the difference between the two wavelengths was larger in muscle tissue than in skin tissue.

The measurements described in the present study could only be performed with *ex vivo* tissue. A previous study showed that penetration depths in porcine and bovine tissue were similar; only chicken tissue showed significantly larger penetration depths [8]. Since bovine and especially porcine tissue is more similar to human tissue than chicken tissue [16], these two tissue types were selected for the present study.

In the previous study [8] the uncorrected 10% penetration depths with the EMS laser were 4.2 mm for porcine skin (4.4 mm in the present study), and 5.0 mm and 5.1 mm for bovine muscle (4.9 mm in the present study). This high level of agreement between the two studies underlines the reproducibility of the used method.

Several studies used similar methods to investigate tissue penetration depths of NIR laser light into biological tissue [9,19–23]. The penetration depths found in the present study are comparable to results from other studies (c.f. [8]). However, the only study that performed such measurements with 1064 nm laser light (or, in general, light with a wavelength greater than 1000 nm) used a custom-built sensor array to measure transmitted light [10]. The present study is the first one that measured the transmission of laser light with a wavelength of 1064 nm through different types of tissue and compared the data with results obtained for laser light with a smaller wavelength (905 nm). Furthermore, in studies of the penetration depth in biological tissues, important parameters such as wavelength, beam size, pulse length and average and peak power are often highly variable. In the present study, these parameters were kept the same for both tissues and LTDs whenever possible. Fundamental differences between the two LTDs that were investigated in the present study were the wavelength (BTL laser, 1064 nm; EMS laser, 905 nm), the peak power (BTL laser, 12 W; EMS laser, 300 W) and the pulse length (BTL laser, 2.5 ms; EMS laser, 100 ns). It was tried to keep the beam size the same for both LTDs. However, since the beam size of the EMS laser could not be adapted and the setting of the beam size of the BTL laser did not function, the beam of the BTL laser was slightly larger (BTL laser, 20.0 mm; EMS laser, 18.7 mm). Beam size has an effect on the penetration depth especially for small beams [12]. However, the penetration depth does not increase further for laser beams with a size larger than 10 mm [12,24]. Therefore, the differences in beam size between the EMS laser and the BTL laser could be neglected. The measured penetration curves were analyzed to compute penetration depths using the raw data and using corrected data following the correction method from [8] that helps addressing reflection losses. Such correction methods can be used for small absorber and scatterer concentrations [25], and similar computations were performed in other, similar studies [8,10,22].

The absorption of light in generic tissue strongly depends on the wavelength. The main absorbing molecules within biological tissue are water, lipids, hemoglobin and melanin [7]. While the absorption coefficient of lipids is approximately equal at 905 nm and 1064 nm [7,14], the absorption coefficients of hemoglobin and melanin decrease with increasing wavelength [7]. In contrast, the absorption of water is approximately two times larger at 1064 nm than at 905 nm [15], which at least partly compensates the effect of melanin and hemoglobin. Besides absorption, scattering of light within the tissue is also decreasing the amount of light that can transmit to a target structure. Scattering is difficult to quantify since it depends on the highly variable fibrous character of a tissue [13]. In general, scattering is decreasing with larger wavelengths [7]. Therefore, the higher penetration depth of 1064 nm light compared to 905 nm light seen in the present study may be due to lower absorption of hemoglobin and melanin and/or due to less scattering.

Since melanin has a lower absorption coefficient at larger wavelengths, and since melanin is only found in the epidermis, it has been hypothesized that 1064 nm light penetrates skin tissue better than light with a lower wavelength [11]. It has been shown that the tissue penetration depth varies with skin color and therefore melanin content [16,26]. A more recent study [23] found a dependency of transmission through skin tissue with skin color only for 660 nm light but not for 840 nm. The authors explained the results with the lower absorption of melanin at 840 nm [23]. Therefore, for the present study, skin and muscle tissues were compared using both 1064 nm and 905 nm light. In both tissues, the 1064 nm light penetrated similarly deeper than the 905 nm light. The different penetration

depths of the two wavelengths can therefore not be explained by the absorption in melanin. However, the porcine skin tissue that was used for the present study was of a very light color, i.e., the melanin content in the epidermis was low. The same measurements should be performed using skin tissues with different melanin content in order to better understand this aspect. Nevertheless, with the present data, it can be concluded that 1064 nm light indeed reaches deeper layers of tissue; however, this is most likely not due to the absorption spectrum of melanin, but rather to the absorption and scattering spectra of hemoglobin.

The penetration curves in the present study are based on measurements of the average power. However, the two LTDs emitted PW laser light. The way of pulsing of the LTDs was fundamentally different regarding the pulse shapes, pulse lengths, repetition rates and peak power. While the BTL laser emitted pulses with a length of 2.5 ms, a repetition rate of 100 Hz and a peak power of 12 W, the EMS laser pulses were 100 ns long with a repetition rate of 40 kHz and a peak power of 300 W. Pulse shapes and pulse lengths stayed constant as the light traveled through tissue (Figure 5), confirming previous findings [8]. This implies that where the light from the EMS laser is reduced to 1%, the peak power is still 3 W, while the peak power of light from the BTL laser at 1% is reduced to 0.12 W. Of note, the important parameter at the target structure is the incoming power density, which further depends on the penetration depth since both LTDs had divergent laser beams. In general, using PW laser light is preferred over CW laser light as it reduces tissue heating of the surface layers and therefore allows higher peak power [17]. This effect is enhanced for reduced pulse lengths. Additionally, it has been hypothesized that the pulse length should be in the correct range for a local thermal activation of mitochondria and the rough endoplasmic reticulum, which is thought to be on the order of hundreds of nanoseconds [27]. These effects would therefore not be possible with the pulse length of the BTL laser, which is more than four orders of magnitude larger.

Besides a thermal activation of intracellular structures such as mitochondria, there are several other mechanisms of action of NIR laser light in laser therapy. However, despite many studies that addressed this question [28], the exact molecular and cellular mechanisms of action have remained poorly understood [2,4]. One of the main reasons for this is that many studies investigating these mechanisms focused on experiments in vitro, but there is a lack of corresponding studies in vivo and particularly clinical trials. For the treatment of musculoskeletal diseases with NIR laser light, three key mechanisms have been so far found in studies in vivo (c.f. [5]).

First, treatment with laser light may lead to an analgesic effect. Specifically, it was shown that laser light can influence the firing rate of nociceptors [29]. The authors of the latter study recorded the activity of heat nociceptors in the tongue of anesthetized cats that were heated by a thermostatically controlled thermal probe. A pretreatment with PW laser light (wavelength, 904 nm; peak power, 2 W; pulse length, 200 ns; repetition rate, 3,040 Hz) substantially decreased the nociceptors' firing rates [29]. An analgesic effect was also observed in laser light treatment of rats that had a surgical injury of the articular disc of the temporomandibular joint [30]. In the latter study, treatment with PW laser light (wavelength, 904 nm; peak power, 70 mW; pulse length, 60 ns; repetition rate, 9,500 Hz) caused a total decrease in pain sensitivity together with a significant decrease of substance P, vanilloid transient potential receptor 1 (TRPV-1) and calcitonin gene-related peptide (CGRP) compared to control animals [30]. Similar results were found for rats after a chronic constriction injury that underwent treatment with the same laser parameters [31]. Substance P and CGRP are inflammatory mediators from afferent nerve fibers that play a role in neurogenic inflammation [32–34]. TRPV-1 is known as a nonselective cation channel for radial heat and capsaicin [35]. In another study, mice in which the gene encoding substance P was deleted did not show an analgesic effect of NIR laser treatment (wavelength, 685 nm; laser mode (CW or PW) not mentioned; output 30 mW) compared to wild type mice [36]. In addition, the TRPV-1 antagonist capsazepine inhibited the analgesic effect of the laser treatment. To our knowledge, similar studies using a 1064 nm NIR laser were not reported.

Second, NIR laser treatment has an effect on prostaglandin E2 (PGE2) concentrations in peritendinous tissue [37]. The authors of the latter study investigated the PGE2 concentrations in the peritendinous tissue parallel to the Achilles tendon of human patients suffering from bilateral Achilles tendinitis. One Achilles tendon of each patient received laser pretreatment (wavelength, 904 nm; peak power, 10 W; pulse length, 200 ns; repetition rate, 5,000 Hz), whereas the other Achilles tendon of each patient received sham treatment. Then, the patients had to run on a treadmill, and the PGE2 concentrations in the peritendinous tissue of both Achilles tendons were evaluated using microdialysis. It was found that the laser pretreatment resulted in lower PGE2 concentrations even during exercise that increased the PGE2 concentrations on the sham-treated side [37]. PGE2 plays a central role in inflammation and feeling pain via inflammatory nociception, in which PGE2 sustains inflammation and pain [38,39]. Furthermore, PGE2 can pre-sensitize the TRPV-1 channel and, thus, may aggravate neurogenic inflammation and pain recognized by the unmyelinated C nerve fibers [40]. Again, to our knowledge, similar studies using a 1064 nm NIR laser were not reported.

Third, it was shown that early laser treatment after structural muscle trauma can reduce the formation of scar tissue [41]. In a rat model of structural gastrocnemius muscle injury, the early treatment with a CW laser (wavelength, 904 nm; PW laser mode; pulse length and peak power not mentioned; average power, 45 mW) reduced the inflammatory response [41]. Additionally, the laser treatment was able to block the effects of reactive oxygen species release and the activation of the transcription factor nuclear factor kappa B (NF- κ B) [41]. NF- κ B is found to be active in many inflammatory diseases including atherosclerosis and others [42], and a suppression of NF- κ B activation has been linked to anti-inflammatory activity [43]. Of note, the release of PGE2 may be promoted by an increase of NF- κ B translocation [44]. Therefore, the reduction of PGE2 concentrations after laser treatment (that was shown in [37]) may be related to the effect of laser treatment on NF- κ B [28,44]. Again, to our knowledge, similar studies using a 1064 nm NIR laser were not reported.

The described mechanisms of action were all based on studies that used PW laser light with a wavelength of 904 nm or smaller. There is little information about the cellular and molecular effects of light with a wavelength greater than 1000 nm [12]. Without knowledge whether 1064 nm laser light has the same or similar anti-inflammatory effects or effects on nociceptors than 904/905 nm laser light, the higher transmittance of 1064 nm than 905 nm laser light within the first 10 mm of biological tissue may be clinically irrelevant.

Finally, the performance of the BTL laser in the beam characterization measurements needs to be addressed. Comparing light emission to the settings at the device revealed several issues of the BTL laser. First, the emitted power was consistently below the set power by 5 – 20% (Figure 2). In comparison, the maximum deviation of measured to set power of the EMS laser as determined in a previous study was 3.3% [18]. Large differences between set and emitted power have been observed with a different LTD before [18]. Since the deviations of the BTL laser were relatively consistent for all tested modes, it can be hypothesized that this originated from deteriorations such as damages to the fiber optical cable or an unclear lens (the tested device was new). These deteriorations could also have led to the high noise levels of the spatial intensity distribution of the BTL laser (Figure 3c). The spatial intensity distribution of the EMS laser was a flat top distribution [8,18], in contrast to the Gaussian distribution of the BTL laser. The main issue of the BTL laser, however, was that the setting to change the beam size was fully dysfunctional (Figure 3d). Whether the function to change the beam size of the BTL laser was dysfunctional only in the unit used in the present study or whether this is a general problem of this LTD was not further investigated. Nevertheless, this reaffirms the need for better standardization and verification of LTDs [18,45,46].

5. Conclusions

Although light with 1064 nm wavelength penetrates deeper into tissue than light with 905 nm wavelength, the pulsing mode and peak power of the light seems to be of greater importance than wavelength when it comes to efficiently transport light into deep layers of tissue. The mechanisms of action of NIR light at these tissue layers remain poorly understood. However, the in vivo evidence that exists has been acquired using 904 nm laser light, and whether the same mechanisms apply for 1064 nm light needs to be addressed in future studies. Overall, laser therapy is an emerging modality in the treatment of musculoskeletal diseases. Since laser therapy offers several advantages such as being non-invasive, free of many side effects reported for drugs and treatments using other medical devices, and free of drugs, it should be further investigated, especially in experiments in vivo and particularly clinical trials. Further investigations should be performed with special attention regarding wavelength, peak power and pulse length of the used LTD.

Supplementary Materials: Not applicable.

Author Contributions: Conceptualization, L.K. and C.S.; methodology, L.K. and C.S.; software, L.K.; validation, L.K. and C.S.; formal analysis, L.K.; investigation, L.K.; resources, L.K. and C.S.; data curation, L.K.; writing—original draft preparation, L.K.; writing—review and editing, C.S.; visualization, L.K.; supervision, C.S.; project administration, C.S.; funding acquisition, C.S. All authors have read and agreed to the published version of the manuscript.

Funding: The laser therapy devices investigated in the present study were made available free of charge by colleagues in Germany. Otherwise, this research received no external funding.

Institutional Review Board Statement: Not applicable.

Informed Consent Statement: Not applicable.

Data Availability Statement: The datasets used and analyzed during this study are available from the corresponding author on reasonable request.

Conflicts of Interest: C.S. served as consultant for Electro Medical Systems (Nyon, Switzerland) until December 2017, and has received funding from Electro Medical Systems for conducting basic research into radial extracorporeal shock wave therapy and laser therapy at his lab. With regard to the present study, Electro Medical Systems placed no constraints on publication of the data and had no role in the design of the study; in the collection, analyses, or interpretation of data; in the writing of the manuscript; or in the decision to publish the results.

References

1. Naterstad, I.F.; Joensen, J.; Bjordal, J.M.; Couppé, C.; Lopes-Martins, R.A.B.; Stausholm, M.B. Efficacy of low-level laser therapy in patients with lower extremity tendinopathy or plantar fasciitis: Systematic review and meta-analysis of randomised controlled trials. *BMJ Open* **2022**, *12*, e059479, doi:10.1136/bmjopen-2021-059479.
2. Musstaf, R.A.; Jenkins, D.F.L.; Jha, A.N. Assessing the impact of low level laser therapy (LLLT) on biological systems: A review. *Int. J. Radiat. Biol.* **2019**, *95*, 120–143, doi:10.1080/09553002.2019.1524944.
3. Bjordal, J.M.; Lopes-Martins, R.A.B.; Joensen, J.; Iversen, V.V. The anti-inflammatory mechanism of low level laser therapy and its relevance for clinical use in physiotherapy. *Phys. Ther. Rev.* **2010**, *15*, 286–293, doi:10.1179/1743288X10Y.0000000001.
4. Dompe, C.; Moncrieff, L.; Matys, J.; Grzech-Leśniak, K.; Kocherova, I.; Bryja, A.; Bruska, M.; Dominiak, M.; Mozdziak, P.; Skiba, T.H.I.; et al. Photobiomodulation - underlying mechanism and clinical applications. *J. Clin. Med.* **2020**, *9*, 1724, doi:10.3390/jcm9061724.
5. Schmitz, C. Improving extracorporeal shock wave therapy with 904 or 905 nm pulsed, high power laser pretreatment. *Preprints* **2021**, 2021010138, doi:10.20944/preprints202101.0138.v1.
6. Chung, H.; Dai, T.; Sharma, S.K.; Huang, Y.-Y.; Carroll, J.D.; Hamblin, M.R. The nuts and bolts of low-level laser (light) therapy. *Ann. Biomed. Eng.* **2012**, *40*, 516–533, doi:10.1007/s10439-011-0454-7.
7. Jacques, S.L. Optical properties of biological tissues: A review. *Phys. Med. Biol.* **2013**, *58*, R37–R61, doi:10.1088/0031-9155/58/11/R37.
8. Kaub, L.; Schmitz, C. More than ninety percent of the light energy emitted by near-infrared laser therapy devices used to treat musculoskeletal disorders is absorbed within the first ten millimeters of biological tissue. *Biomedicines* **2022**, *10*, doi:10.3390/biomedicines10123204.

9. Hudson, D.E.; Hudson, D.O.; Wininger, J.M.; Richardson, B.D. Penetration of laser light at 808 and 980 nm in bovine tissue samples. *Photomed. Laser Surg.* **2013**, *31*, 163–168, doi:10.1089/pho.2012.3284.
10. Han, D.; Xu, J.; Wang, Z.; Yang, N.; Li, X.; Qian, Y.; Li, G.; Dai, R.; Xu, S. Penetrating effect of high-intensity infrared laser pulses through body tissue. *RSC Adv.* **2018**, *8*, 32344–32357, doi:10.1039/C8RA05285A.
11. Mineroff, J.; Austin, E.; Jagdeo, J. Cutaneous effects of photobiomodulation with 1072 nm light. *Arch. Dermatol. Res.* **2022**, doi:10.1007/s00403-022-02480-7.
12. Ash, C.; Dubec, M.; Donne, K.; Bashford, T. Effect of wavelength and beam width on penetration in light-tissue interaction using computational methods. *Lasers Med. Sci.* **2017**, *32*, 1909–1918, doi:10.1007/s10103-017-2317-4.
13. Bashkatov, A.N.; Genina, E.A.; Kochubey, V.I.; Tuchin, V.V. Optical properties of human skin, subcutaneous and mucous tissues in the wavelength range from 400 to 2000nm. *J. Phys. D App. Phys.* **2005**, *38*, 2543, doi:10.1088/0022-3727/38/15/004.
14. Van Veen, R.; Sterenborg, H.; Pifferi, A.; Torricelli, A.; Cubeddu, R. Determination of VIS- NIR absorption coefficients of mammalian fat, with time- and spatially resolved diffuse reflectance and transmission spectroscopy. In *Biomedical Topical Meetings, Miami Beach, FL, USA, 14-17 April 2004*; Optica Publishing Group, **2004**, SF4, ISBN 1-55752-769-5.
15. Deng, R.; He, Y.; Qin, Y.; Chen, Q.; Chen, L. Measuring pure water absorption coefficient in the near-infrared spectrum (900–2500 nm). *J. Remote Sens.* **2012**, *16*, 192–206.
16. Liebert, A.; Waddington, G.; Bicknell, B.; Chow, R.; Adams, R. Quantification of the absorption of low-level 904 nm superpulsed laser, light as a function of skin colour. In *Proceedings of the 9th World Association for Laser Therapy Congress, Surfers Paradise, Australia, 28–30 September 2012*; Laakso, E.L., Young, C., Eds.; Medimond: Gold Coast, Australia, **2012**, pp. 11–15.
17. Hashmi, J.T.; Huang, Y.-Y.; Sharma, S.K.; Kurup, D.B.; Taboada, L. de; Carroll, J.D.; Hamblin, M.R. Effect of pulsing in low-level light therapy. *Lasers Surg. Med.* **2010**, *42*, 450–466, doi:10.1002/lsm.20950.
18. Kaub, L.; Schmitz, C. Spread of the optical power emission of three units each of two different laser therapy devices used in sports medicine, which cannot be assessed by the users, shown by means of high-fidelity laser measurement technology. *Biomedicines* **2023**, *11*, 585, doi:10.3390/biomedicines11020585.
19. Stolik, S.; Delgado, J.A.; Perez, A.; Anasagasti, L. Measurement of the penetration depths of red and near infrared light in human “ex vivo” tissues. *J. Photochem. Photobiol. B* **2000**, *57*, 90–93, doi:10.1016/S1011-1344(00)00082-8.
20. Arslan, H.; Doluğan, Y.B. Optical penetration depths and fluence distributions in chicken breast and liver tissues. *Opt. Spectrosc.* **2019**, *127*, 763–768, doi:10.1134/S0030400X19100035.
21. Barbora, A.; Bohar, O.; Sivan, A.A.; Magory, E.; Nause, A.; Minnes, R. Higher pulse frequency of near-infrared laser irradiation increases penetration depth for novel biomedical applications. *PLoS One* **2021**, *16*, e0245350, doi:10.1371/journal.pone.0245350.
22. Barbosa, R.I.; Guirro, E.C.d.O.; Bachmann, L.; Brandino, H.E.; Guirro, R.R.d.J. Analysis of low-level laser transmission at wavelengths 660, 830 and 904 nm in biological tissue samples. *J. Photochem. Photobiol. B* **2020**, *209*, 111914, doi:10.1016/j.jphoto-biol.2020.111914.
23. Nussbaum, E.L.; van Zuylen, J.; Jing, F. Transmission of light through human skin folds during phototherapy: Effects of physical characteristics, irradiation wavelength, and skin-diode coupling. *Physiother. Can.* **2007**, *59*, 194–207.
24. Li, T.; Xue, C.; Wang, P.; Li, Y.; Wu, L. Photon penetration depth in human brain for light stimulation and treatment: A realistic Monte Carlo simulation study. *J. Innov. Opt. Health Sci.* **2017**, *10*, 1743002, doi:10.1142/S1793545817430027.
25. Oshina, I.; Spigulis, J. Beer-Lambert law for optical tissue diagnostics: current state of the art and the main limitations. *J. Biomed. Opt.* **2021**, *26*, 100901, doi:10.1117/1.JBO.26.10.100901.
26. Zhao, Z.; Fairchild, P.W. Dependence of light transmission through human skin on incident beam diameter at different wavelengths. In *Laser-Tissue Interaction IX, Proceedings of the SPIE 3254, BIOS '98 International Biomedical Optics Symposium, San Jose, CA, USA, 13 May 1998*; SPIE: Manchester, UK, **1998**, doi:10.1117/12.308184.
27. Moriyama, Y.; Nguyen, J.; Akens, M.; Moriyama, E.H.; Lilge, L. In vivo effects of low level laser therapy on inducible nitric oxide synthase. *Lasers Surg. Med.* **2009**, *41*, 227–231, doi:10.1002/lsm.20745.
28. De Freitas, L.F.; Hamblin, M.R. Proposed mechanisms of photobiomodulation or low-level light therapy. *IEEE J. Sel. Top. Quantum Electron.* **2016**, *22*, doi:10.1109/JSTQE.2016.2561201.
29. Mezawa, S.; Iwata, K.; Naito, K.; Kamogawa, H. The possible analgesic effect of soft-laser irradiation on heat nociceptors in the cat tongue. *Arch. Oral Biol.* **1988**, *33*, 693–694, doi:10.1016/0003-9969(88)90125-2.
30. De Freitas Rodrigues, A.; De Oliveira Martins, D.; Chacur, M.; Luz, J.G.C. The effectiveness of photobiomodulation in the management of temporomandibular pain sensitivity in rats: Behavioral and neurochemical effects. *Lasers Med. Sci.* **2020**, *35*, 447–453, doi:10.1007/s10103-019-02842-0.
31. De Oliveira, M.E.; Da Silva, J.T.; Brioschi, M.L.; Chacur, M. Effects of photobiomodulation therapy on neuropathic pain in rats: Evaluation of nociceptive mediators and infrared thermography. *Lasers Med. Sci.* **2021**, *36*, 1461–1467, doi:10.1007/s10103-020-03187-9.
32. Snijdelaar, D.G.; Dirksen, R.; Slappendel, R.; Crul, B.J. Substance P. *Eur. J. Pain* **2000**, *4*, 121–135, doi:10.1053/eujp.2000.0171.
33. Sann, H.; Pierau, F.K. Efferent functions of C-fiber nociceptors. *Z. Rheumatol.* **1998**, *57 Suppl 2*, 8–13, doi:10.1007/s003930050226.
34. Foreman, J.C. Peptides and neurogenic inflammation. *Br. Med. Bull.* **1987**, *43*, 386–400, doi:10.1093/oxfordjournals.bmb.a072189.
35. Julius, D. TRP channels and pain. In *Neurobiology of TRP Channels*, 1st ed.; Rosenbaum Emir, T.L., Ed.; CRC Press: Milton, **2017**, pp. 125–148, ISBN 978-1-4987-5524-5.

36. Han, D.-S.; Lee, C.-H.; Shieh, Y.-D.; Chen, C.-C. Involvement of substance P in the analgesic effect of low-level laser therapy in a mouse model of chronic widespread muscle pain. *Pain Med.* **2019**, *20*, 1963–1970, doi:10.1093/pm/pnz056.
37. Bjordal, J.M.; Lopes-Martins, R.Á.B.; Iversen, V.V. A randomised, placebo controlled trial of low level laser therapy for activated Achilles tendinitis with microdialysis measurement of peritendinous prostaglandin E2 concentrations. *Br. J. Sports Med.* **2006**, *40*, 76-80; discussion 76-80, doi:10.1136/bjsm.2005.020842.
38. Bergqvist, F.; Carr, A.J.; Whewey, K.; Watkins, B.; Oppermann, U.; Jakobsson, P.-J.; Dakin, S.G. Divergent roles of prostacyclin and PGE2 in human tendinopathy. *Arthritis Res. Ther.* **2019**, *21*, 74, doi:10.1186/s13075-019-1855-5.
39. Momin, A.; McNaughton, P.A. Regulation of firing frequency in nociceptive neurons by pro-inflammatory mediators. *Exp. Brain Res.* **2009**, *196*, 45–52, doi:10.1007/s00221-009-1744-2.
40. Jang, Y.; Kim, M.; Hwang, S.W. Molecular mechanisms underlying the actions of arachidonic acid-derived prostaglandins on peripheral nociception. *J. Neuroinflammation* **2020**, *17*, 30, doi: 10.1186/s12974-020-1703-1.
41. Rizzi, C.F.; Mauriz, J.L.; Freitas Corrêa, D.S.; Moreira, A.J.; Zettler, C.G.; Filippin, L.I.; Marroni, N.P.; González-Gallego, J. Effects of low-level laser therapy (LLLT) on the nuclear factor (NF)-kappaB signaling pathway in traumatized muscle. *Lasers Surg. Med.* **2006**, *38*, 704–713, doi:10.1002/lsm.20371.
42. Monaco, C.; Andreacos, E.; Kiriakidis, S.; Mauri, C.; Bicknell, C.; Foxwell, B.; Cheshire, N.; Paleolog, E.; Feldmann, M. Canonical pathway of nuclear factor kappa B activation selectively regulates proinflammatory and prothrombotic responses in human atherosclerosis. *Proc. Natl. Acad. Sci. U.S.A.* **2004**, *101*, 5634–5639, doi:10.1073/pnas.0401060101.
43. Barnes, P.J.; Karin, M. Nuclear factor-kappa B: A pivotal transcription factor in chronic inflammatory diseases. *N. Engl. J. Med.* **1997**, *336*, 1066–1071, doi:10.1056/NEJM199704103361506.
44. Lim, W.; Kim, J.; Kim, S.; Karna, S.; Won, J.; Jeon, S.M.; Kim, S.Y.; Choi, Y.; Choi, H.; Kim, O. Modulation of lipopolysaccharide-induced NF-κB signaling pathway by 635 nm irradiation via heat shock protein 27 in human gingival fibroblast cells. *Photochem. Photobiol.* **2013**, *89*, 199–207, doi:10.1111/j.1751-1097.2012.01225.x.
45. Girasol, C.E.; Braz, G.d.A.; Bachmann, L.; Celli, J.; Guirro, R.R.d.J. Laser light sources for photobiomodulation: The role of power and beam characterization in treatment accuracy and reliability. *PLoS One* **2022**, *17*, e0266193, doi:10.1371/journal.pone.0266193.
46. Parker, S.; Cronshaw, M.; Grootveld, M.; George, R.; Anagnostaki, E.; Mylona, V.; Chala, M.; Walsh, L. The influence of delivery power losses and full operating parametry on the effectiveness of diode visible-near infra-red (445-1064 nm) laser therapy in dentistry-a multi-centre investigation. *Lasers Med. Sci.* **2022**, *37*, 2249–2257, doi:10.1007/s10103-021-03491-y.