

Figure S1a. Tandem Mass Spectrometry (MS²) data for glycine (as an isopropyl ester)

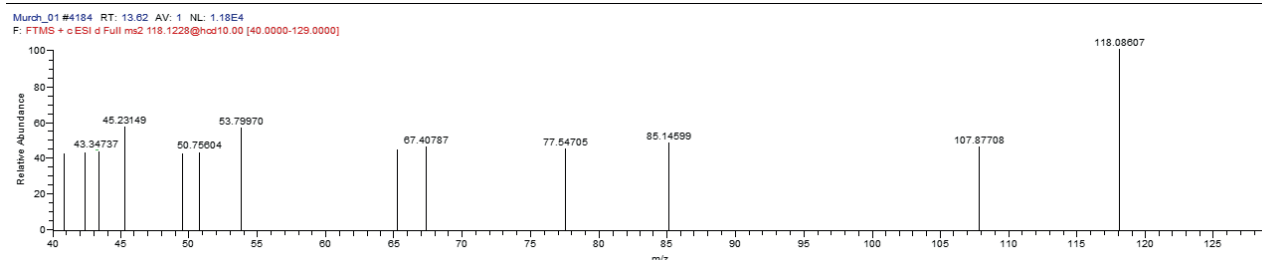
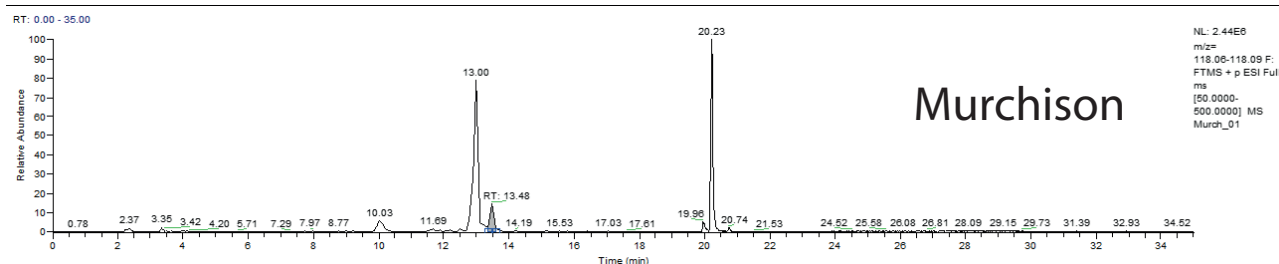
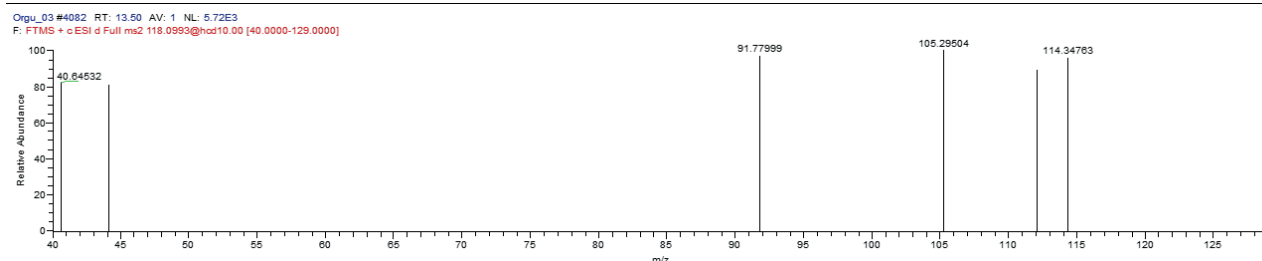
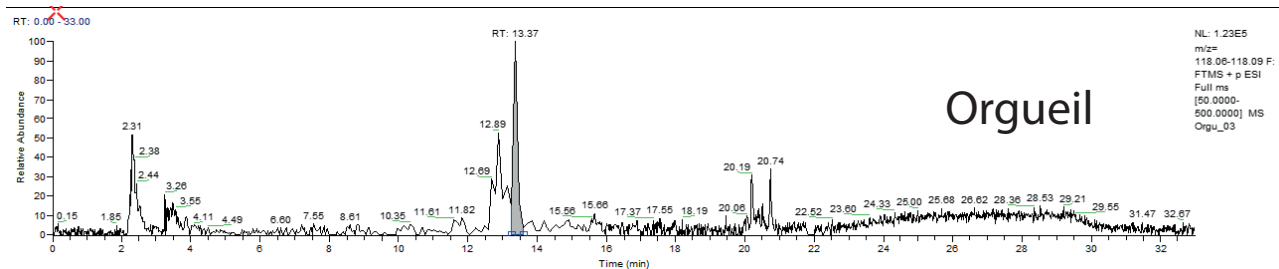
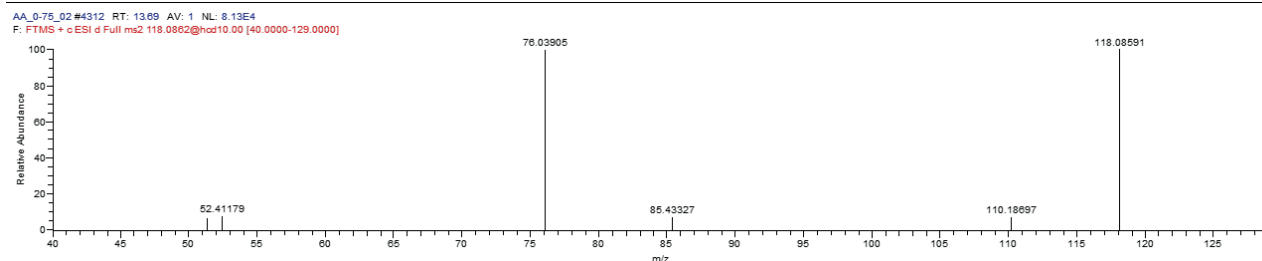
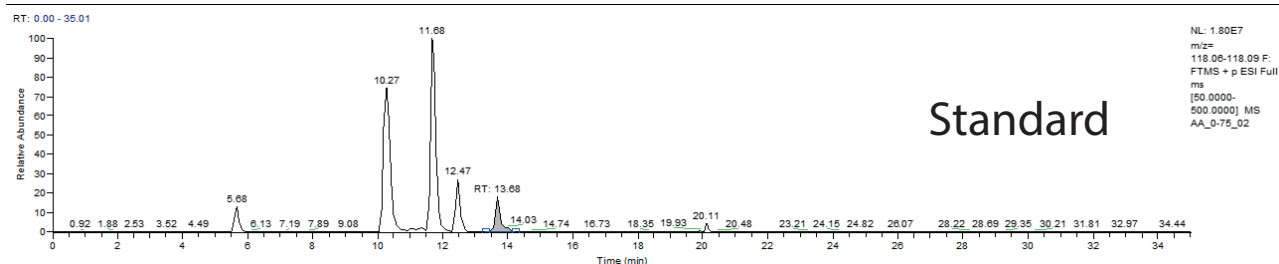


Figure S1b. Tandem Mass Spectrometry (MS²) data for β -alanine (as an isopropyl ester)

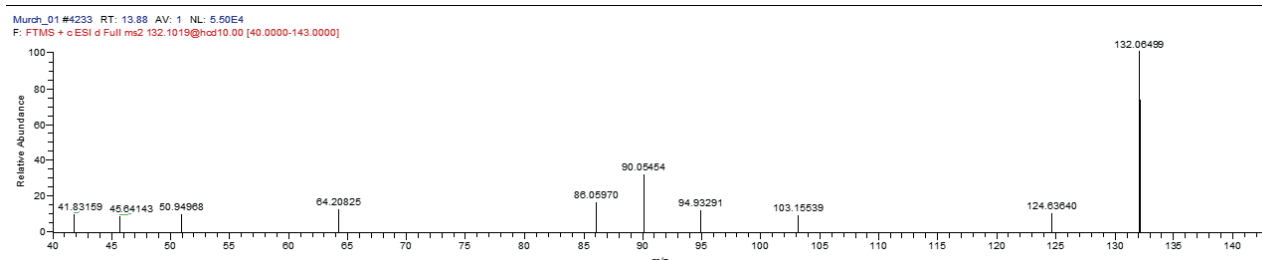
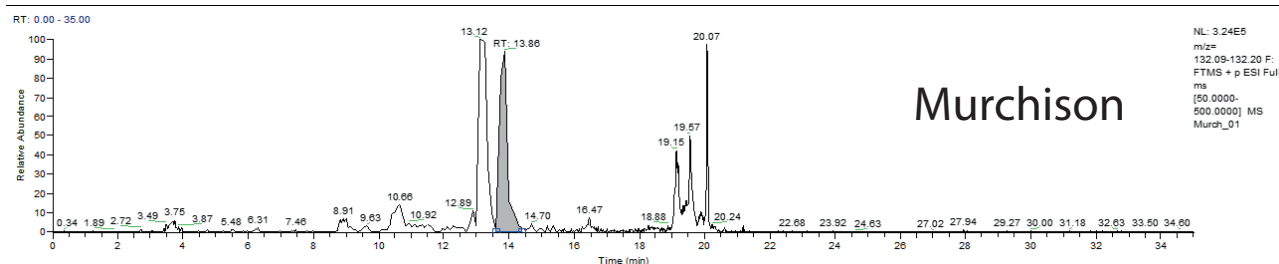
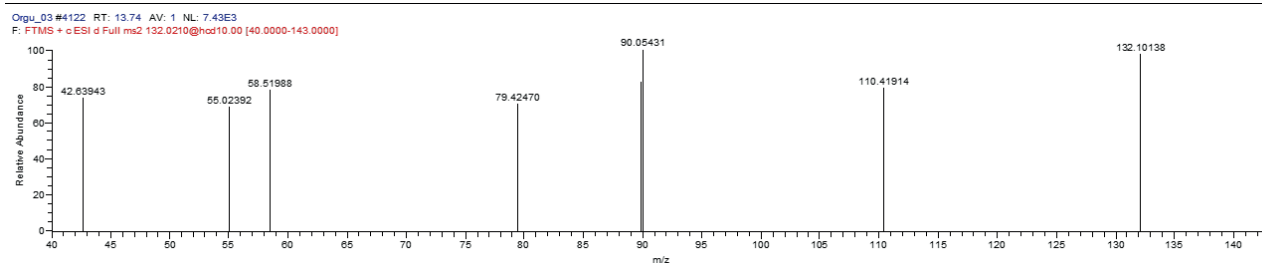
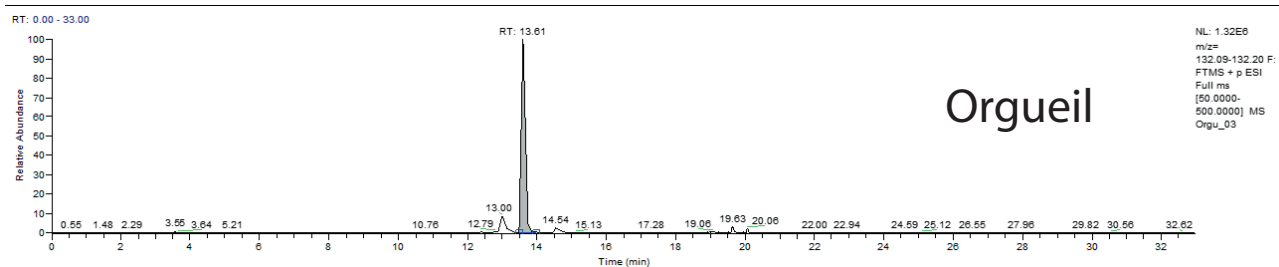
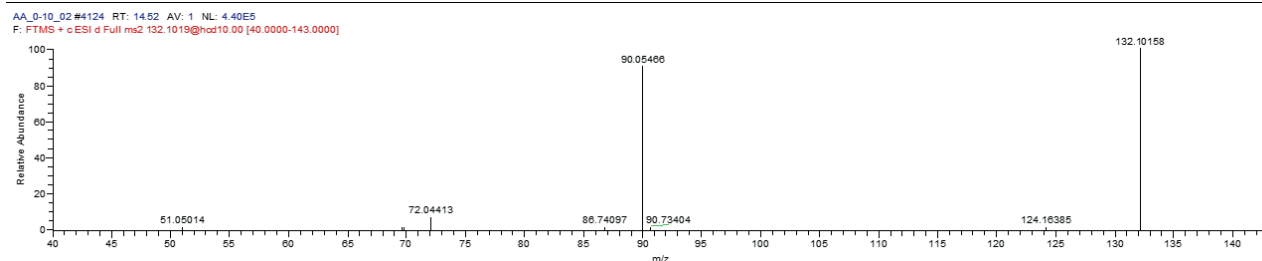
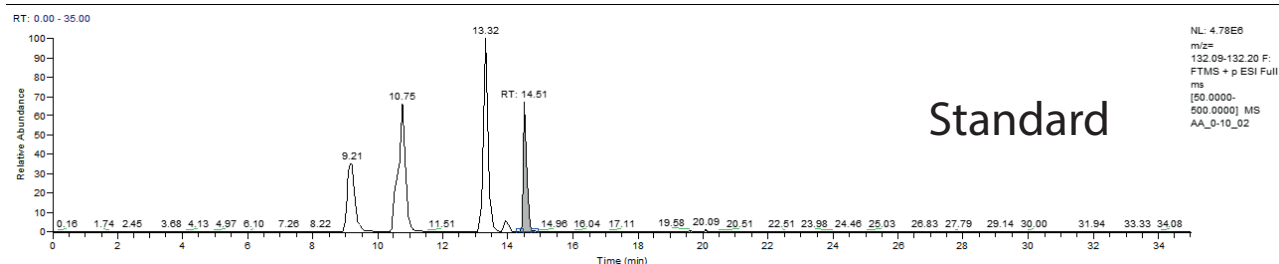
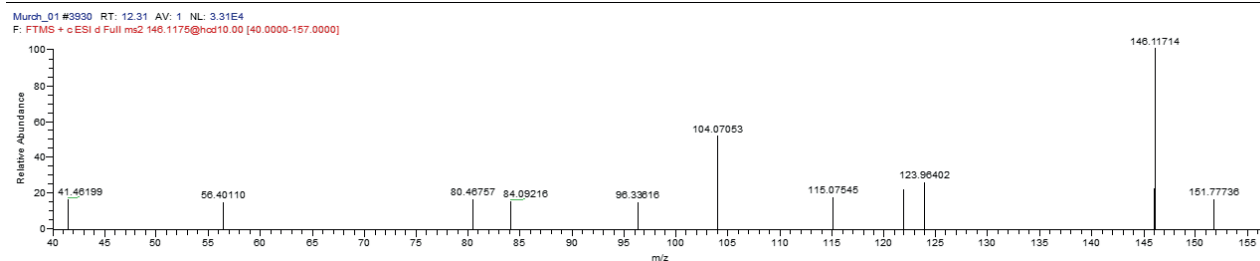
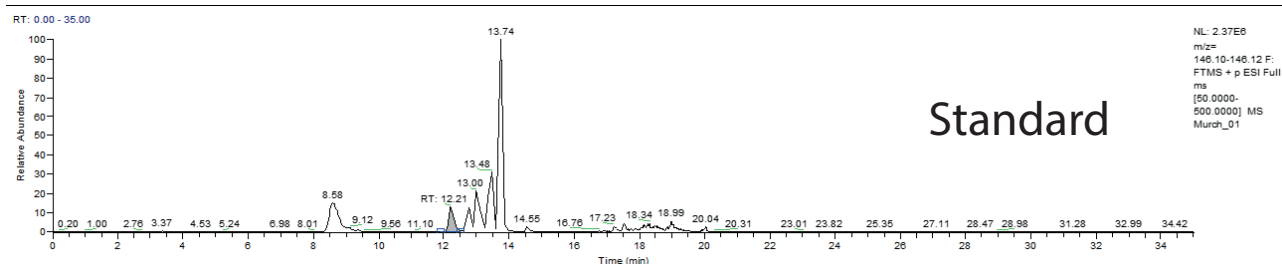


Figure S1c. Tandem Mass Spectrometry (MS²) data for **α -aminobutyric acid** (as an isoproyl ester)



Orgueil

No MS² data available

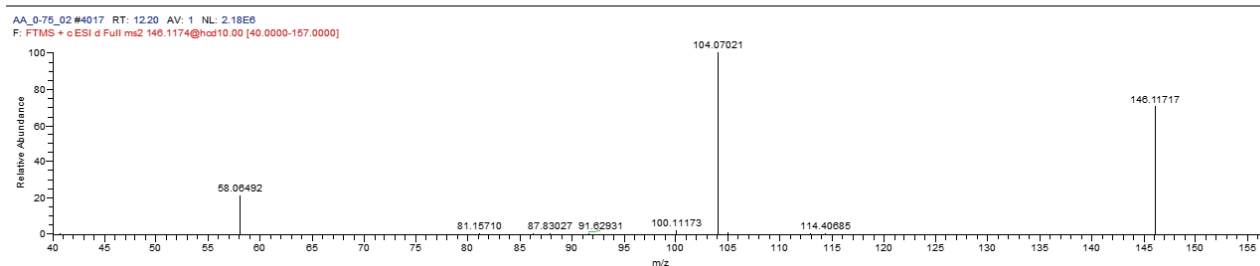
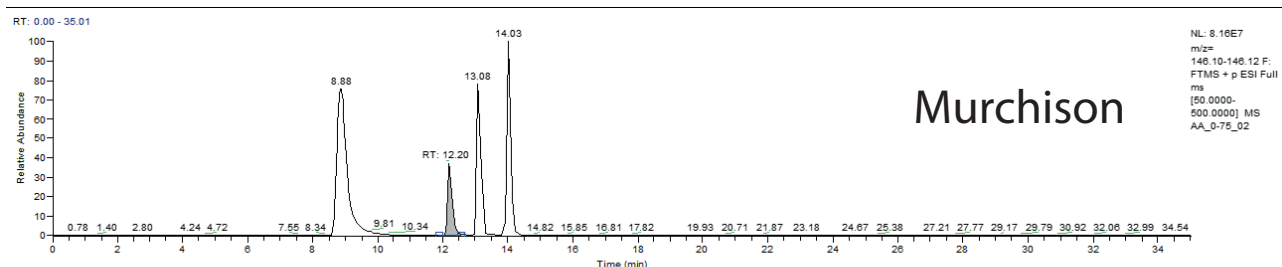


Figure S1d. Tandem Mass Spectrometry (MS²) data for α -aminoisobutyric acid (as an isopropyl ester)

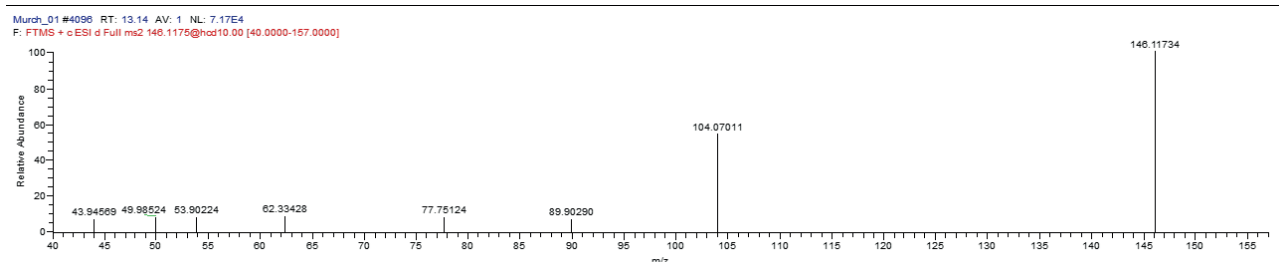
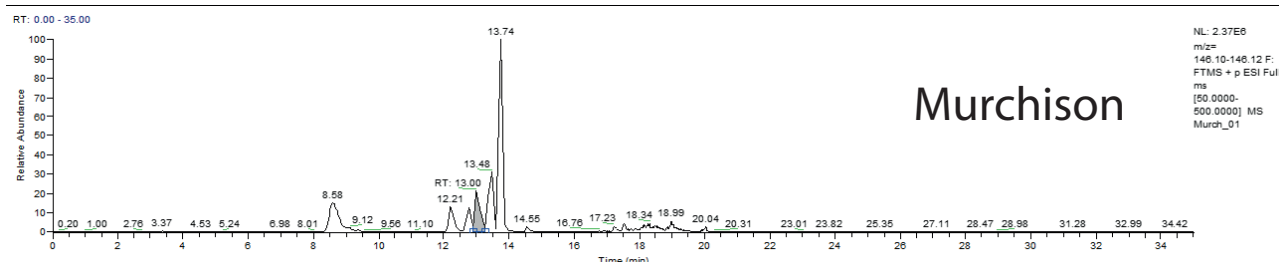
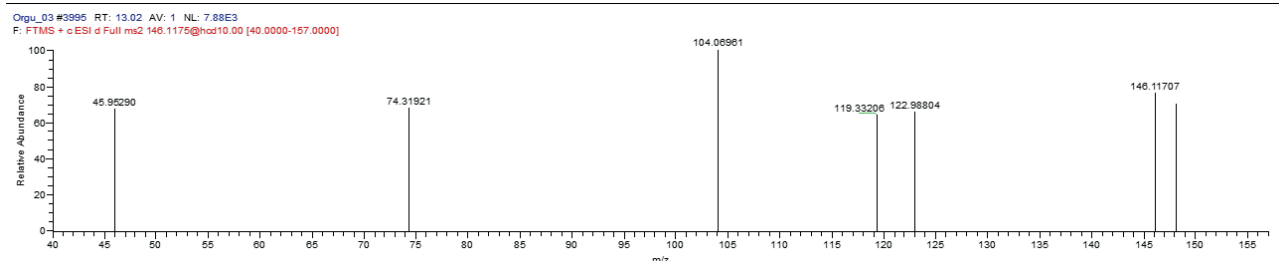
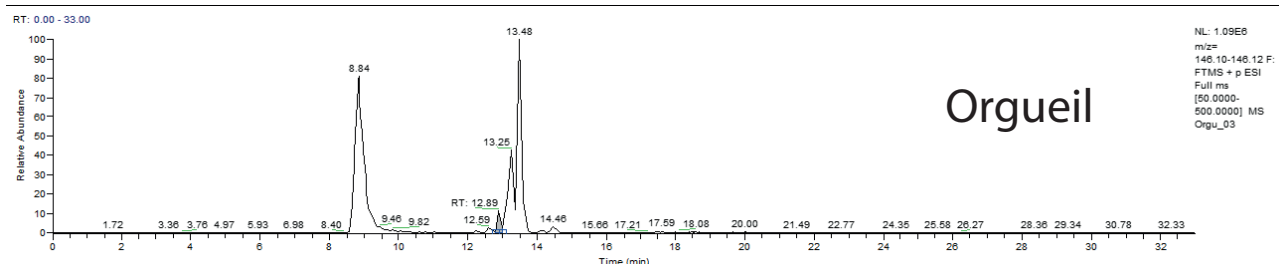
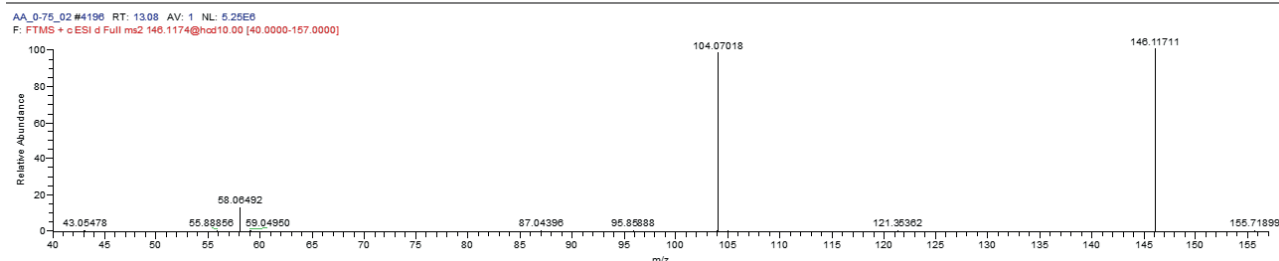
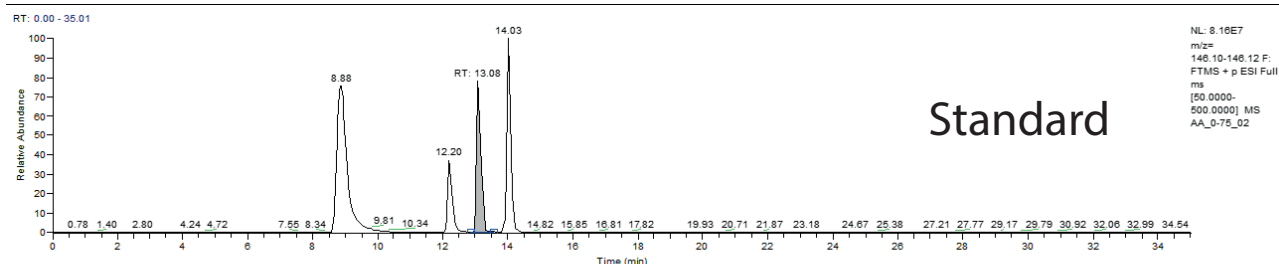


Figure S1e. Tandem Mass Spectrometry (MS²) data for aspartic acid (as an isopropyl ester)

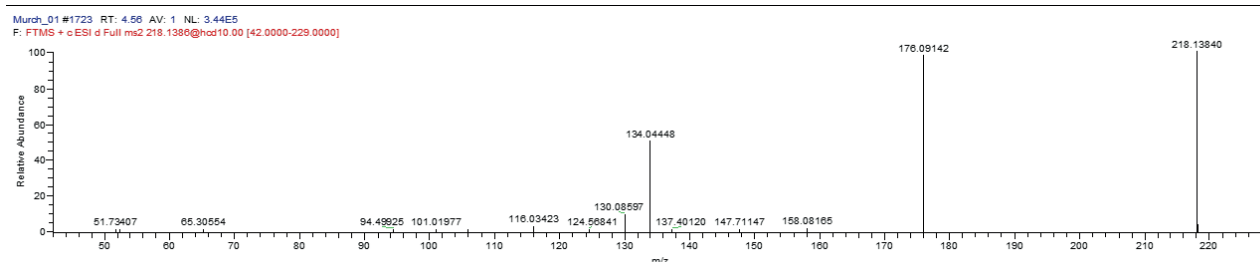
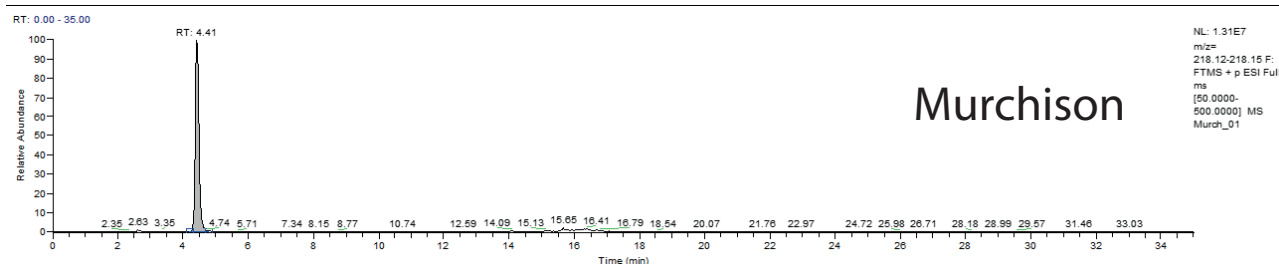
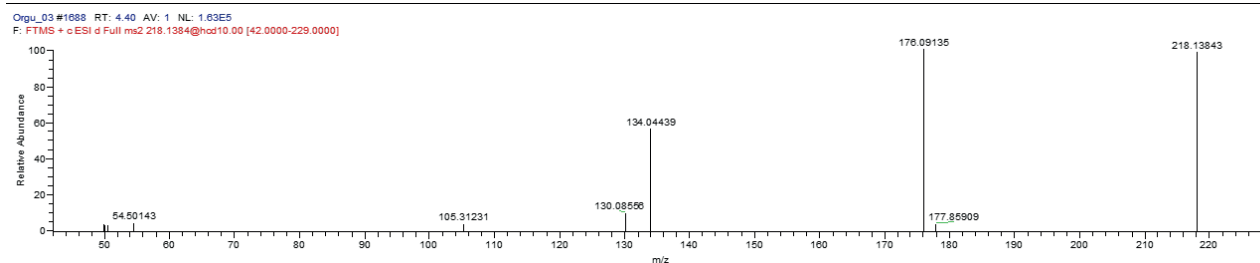
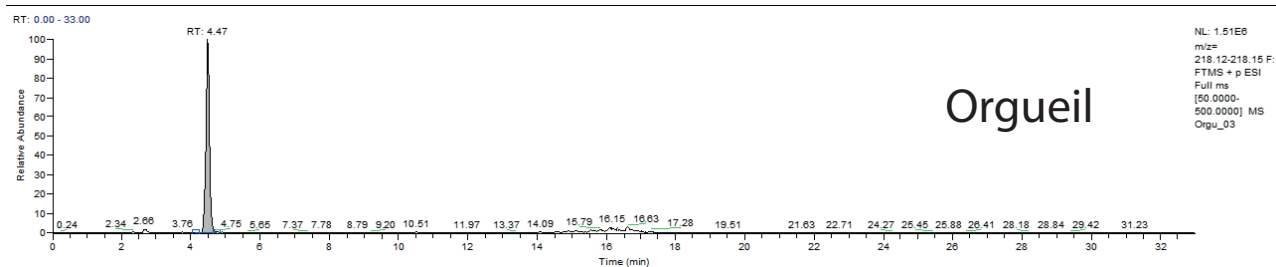
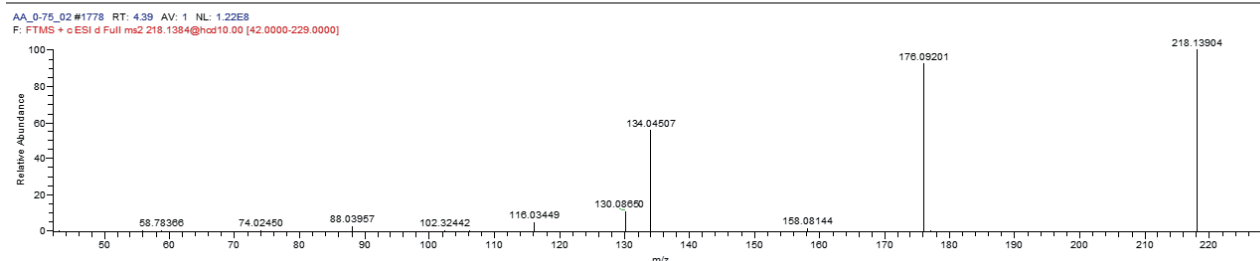
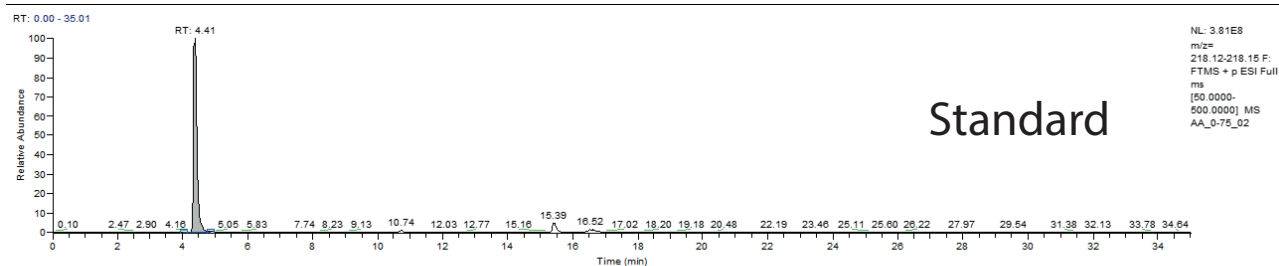
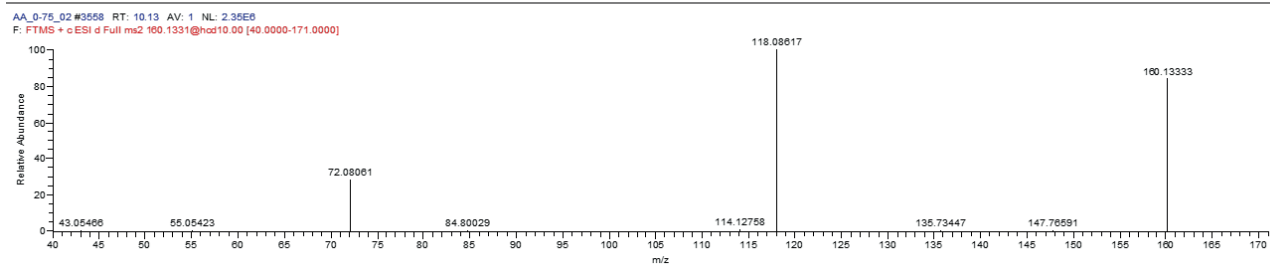
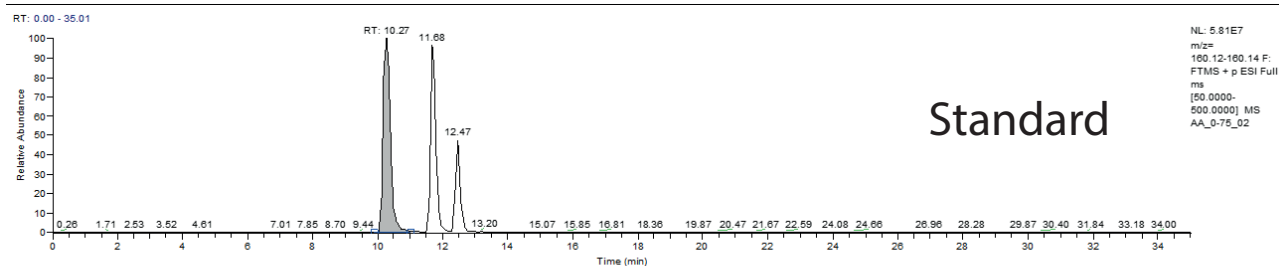


Figure S1f. Tandem Mass Spectrometry (MS²) data for **valine** (as an isopropyl ester)



Orgueil

BDL

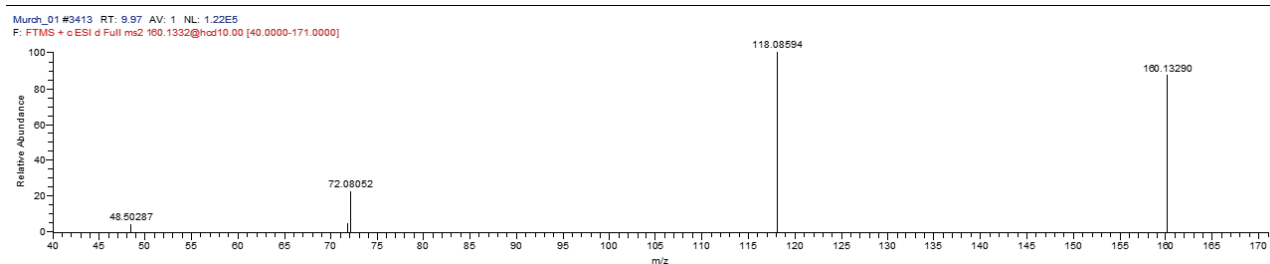
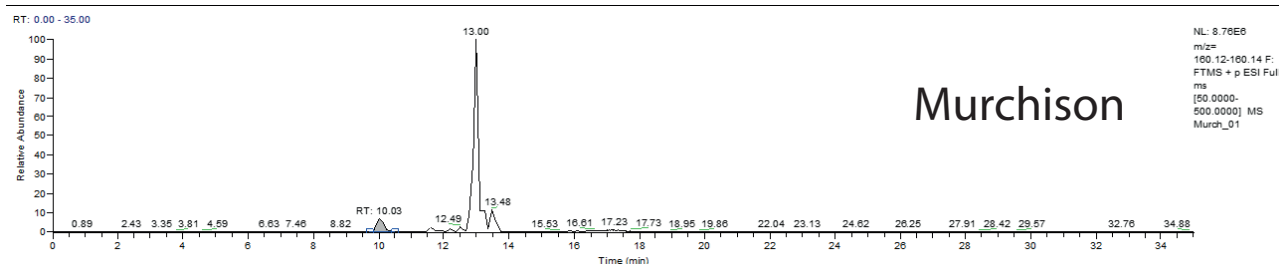
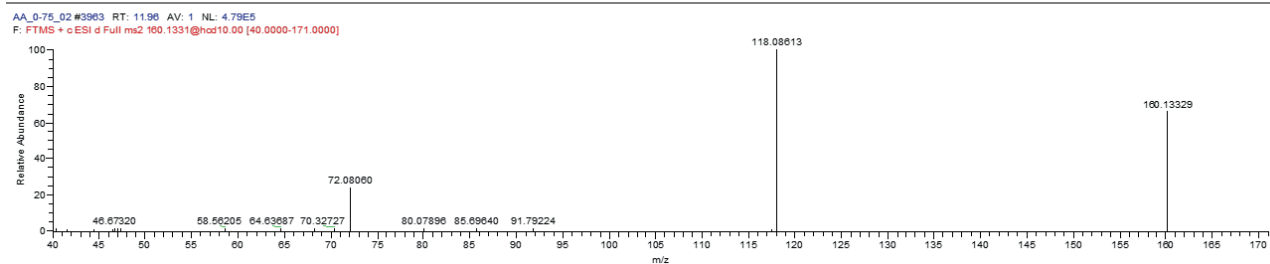
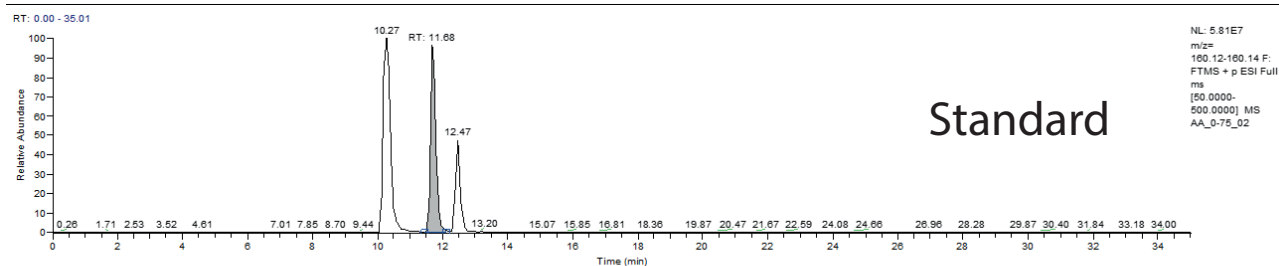


Figure S1g. Tandem Mass Spectrometry (MS²) data for **norvaline** (as an isopropyl ester)



Orgueil

BDL

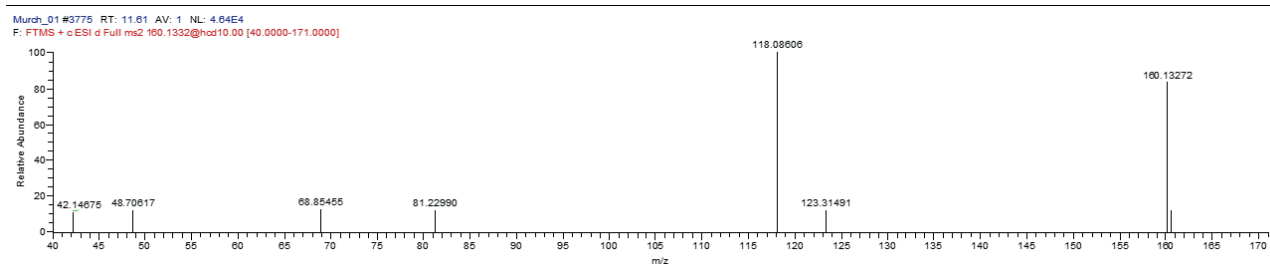
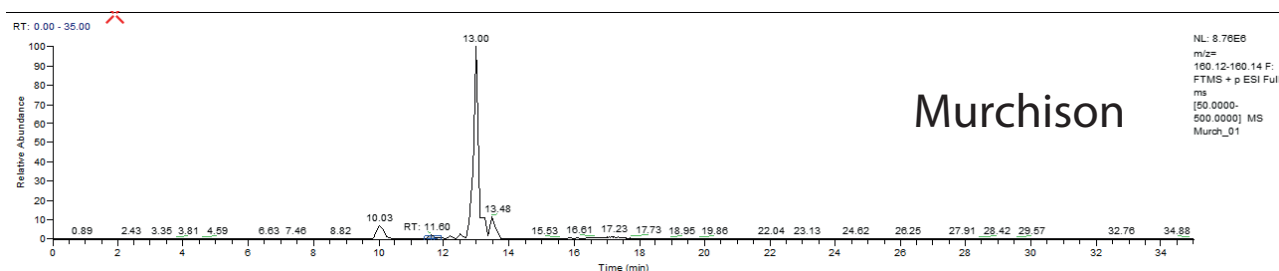


Figure S1h. Tandem Mass Spectrometry (MS²) data for glutamic acid (as an isoproyl ester)

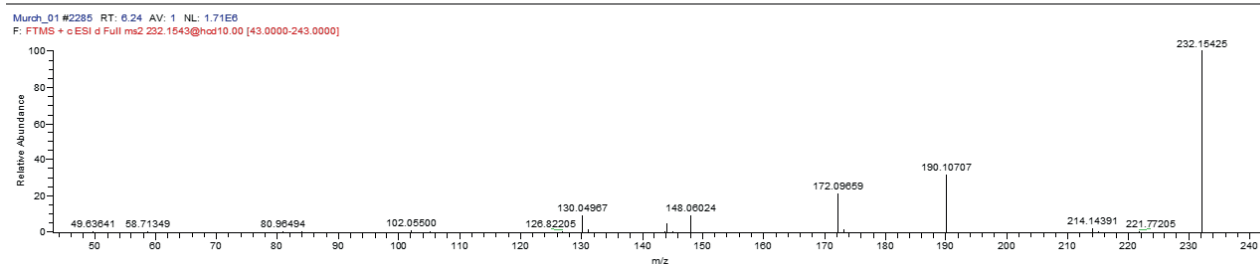
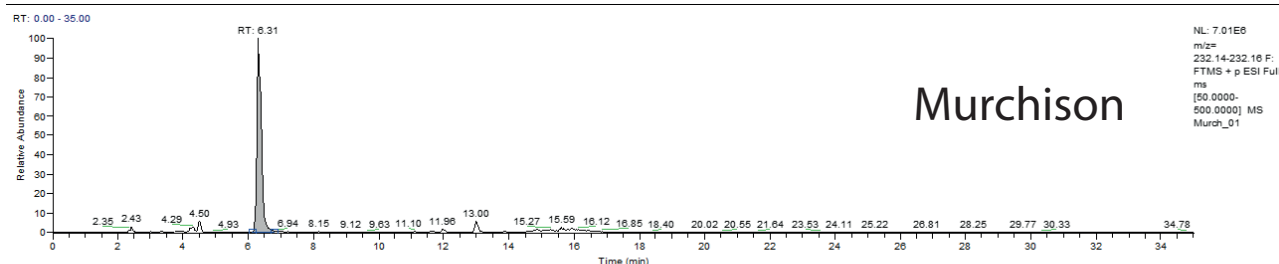
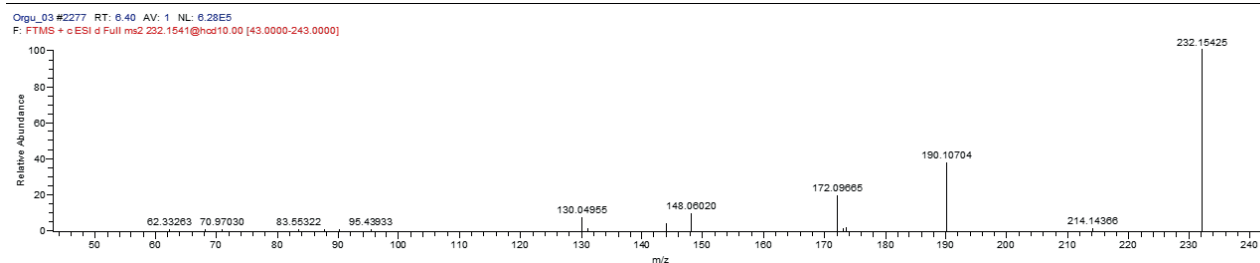
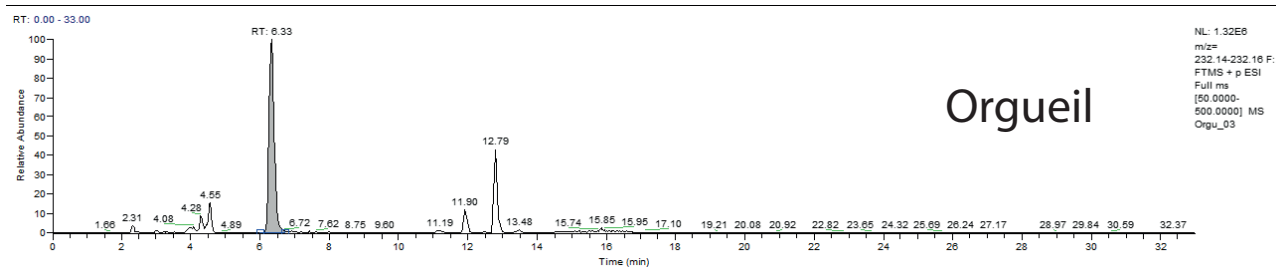
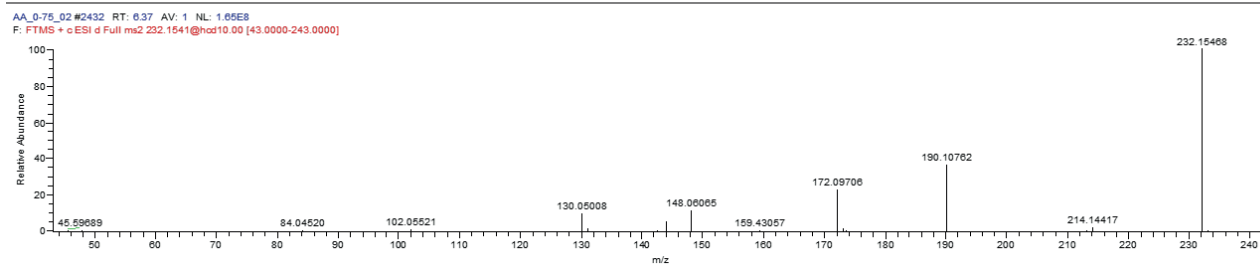
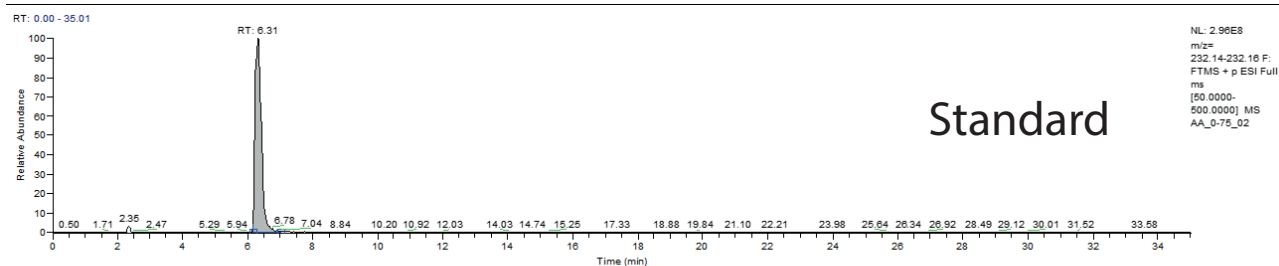
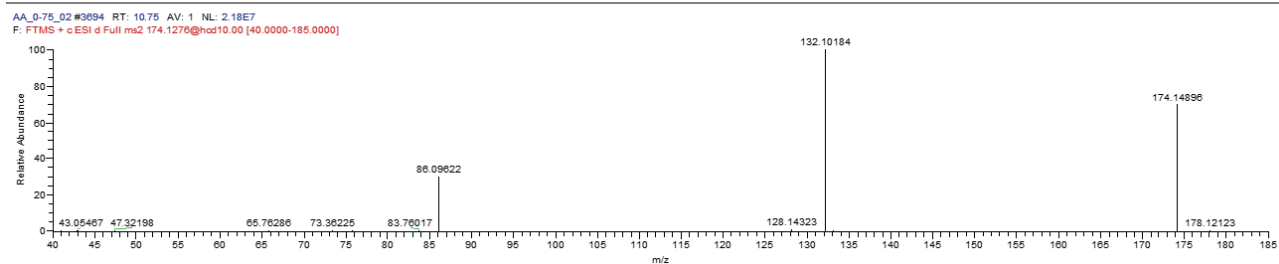
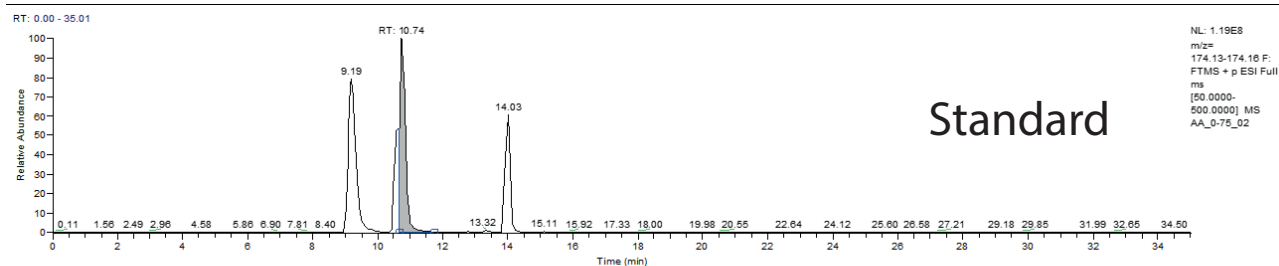


Figure S1i. Tandem Mass Spectrometry (MS²) data for **leucine** (as an isopropyl ester)



Orgueil

BDL

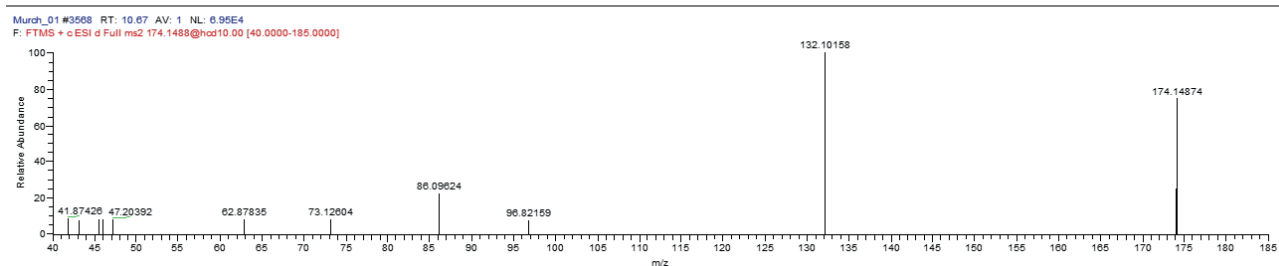
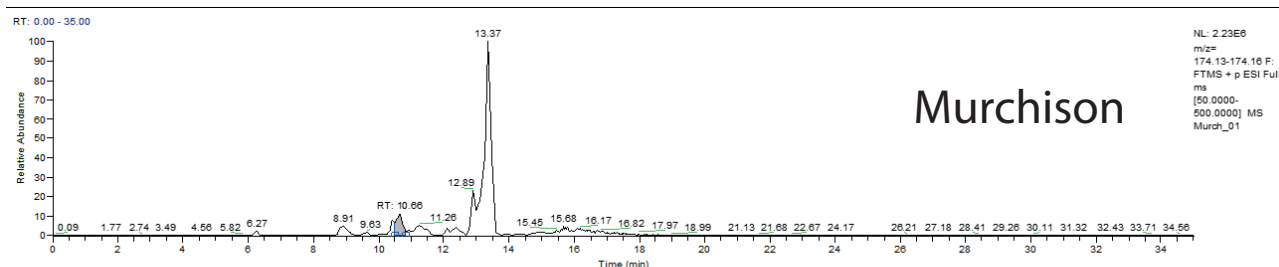
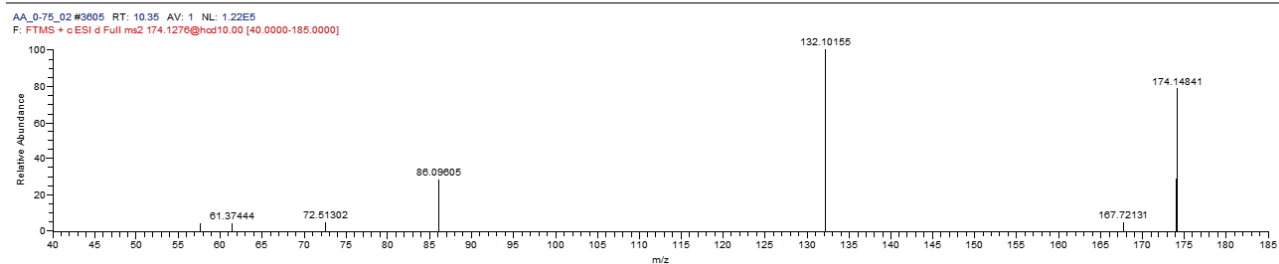
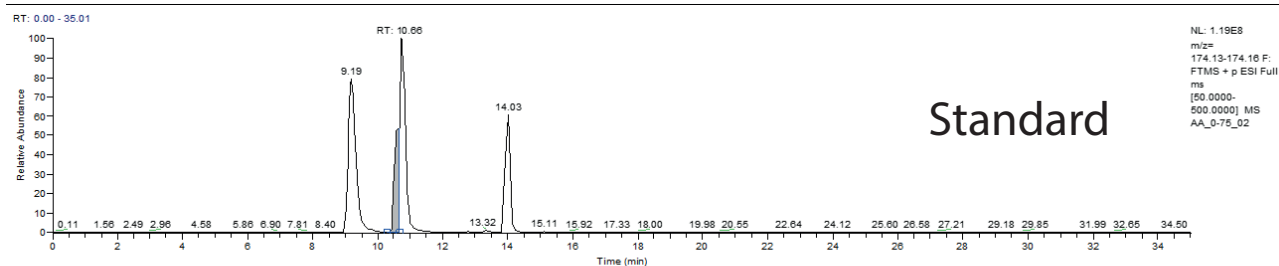


Figure S1j. Tandem Mass Spectrometry (MS²) data for **isoleucine** (as an isoproyl ester)



Orgueil

BDL

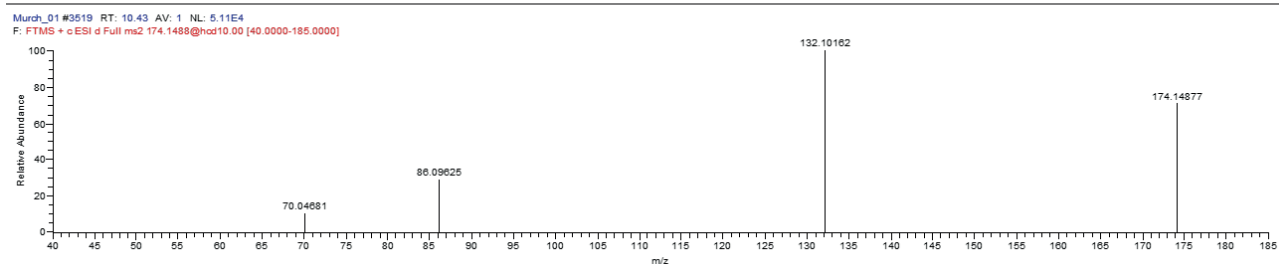
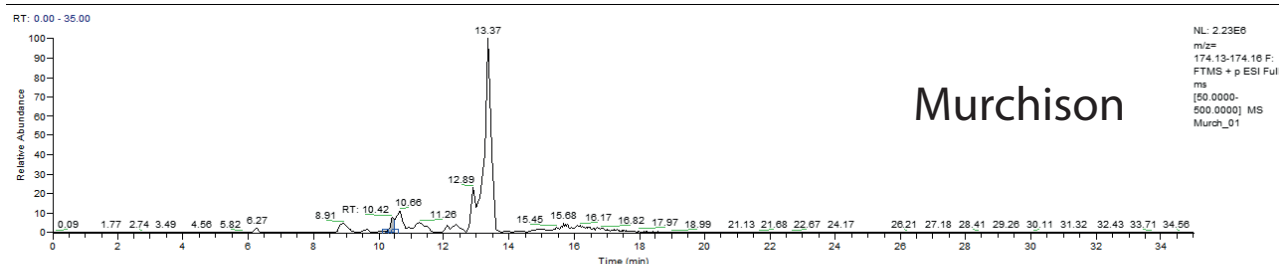
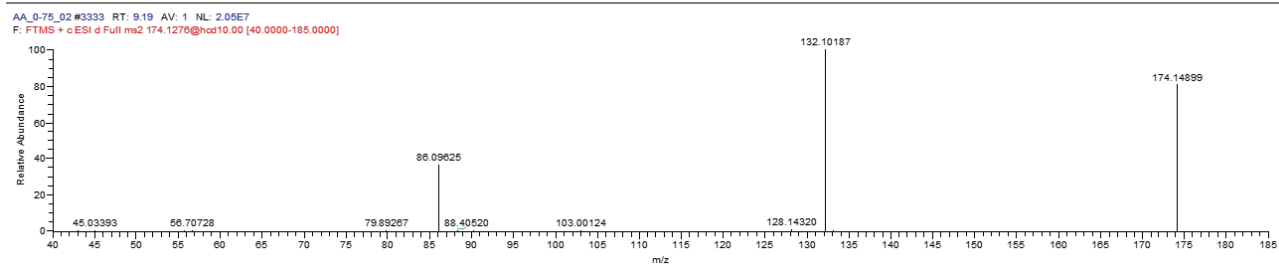
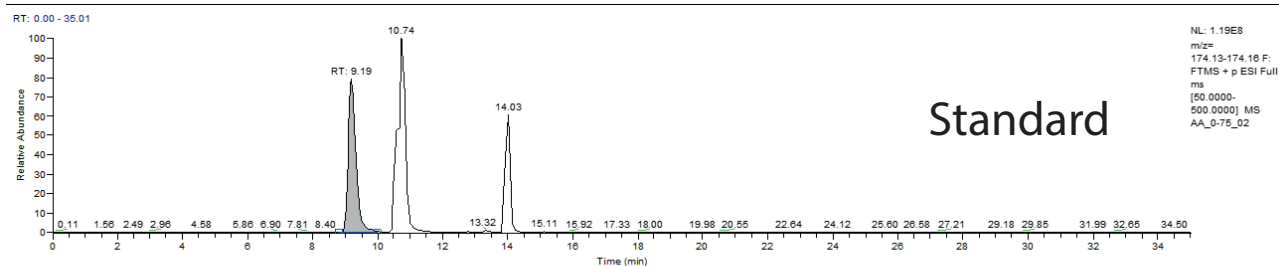


Figure S1k. Tandem Mass Spectrometry (MS²) data for **alloseucine** (as an isopropyl ester)



Orgueil

BDL

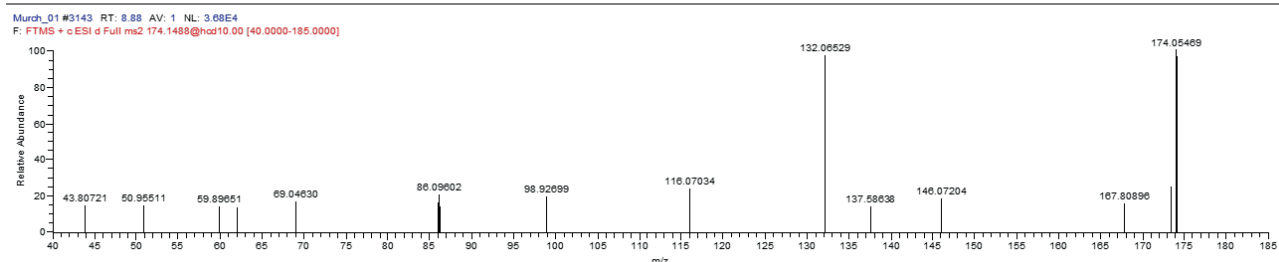
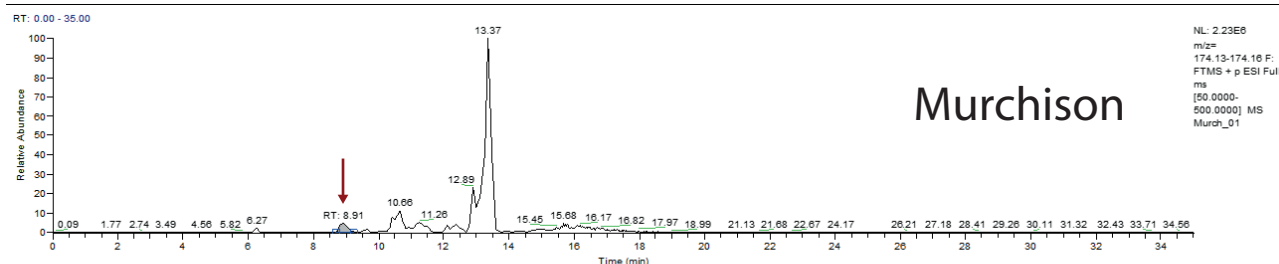
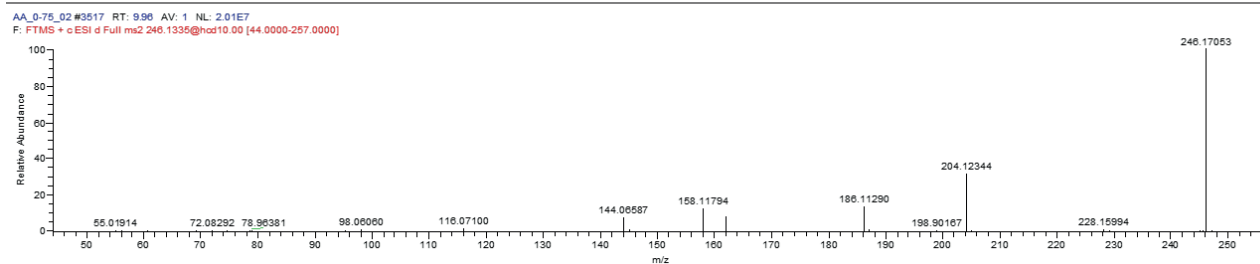
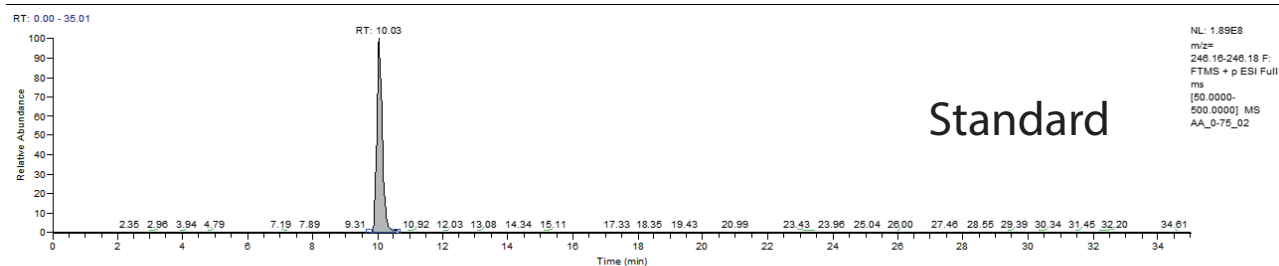


Figure S1I. Tandem Mass Spectrometry (MS²) data for α -aminoadipic acid (as an isopropyl ester)



Orgueil

No MS² data available

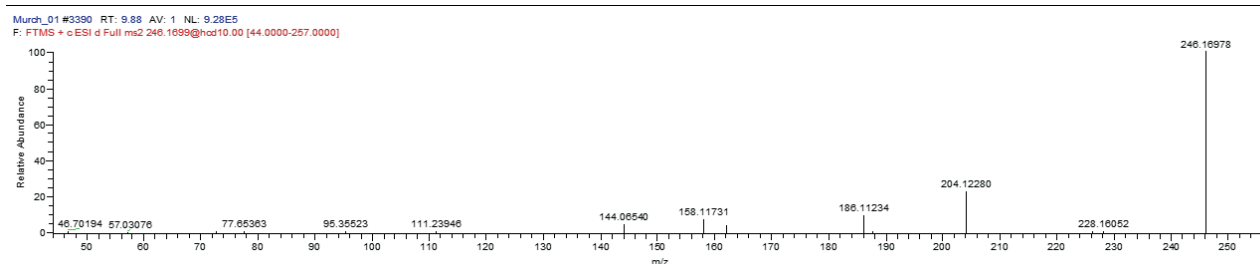
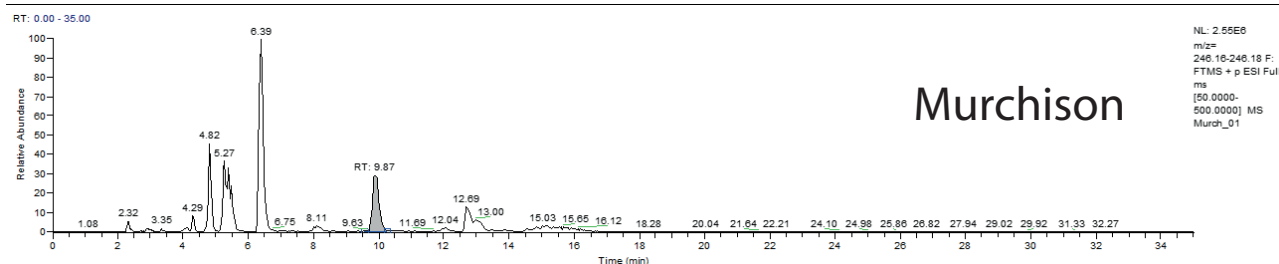
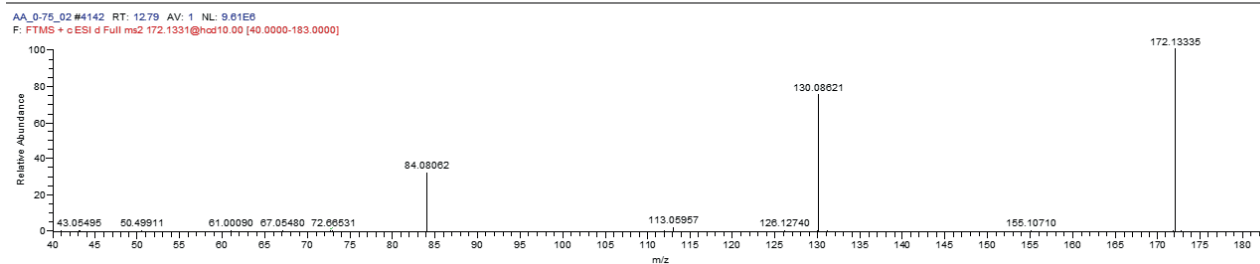
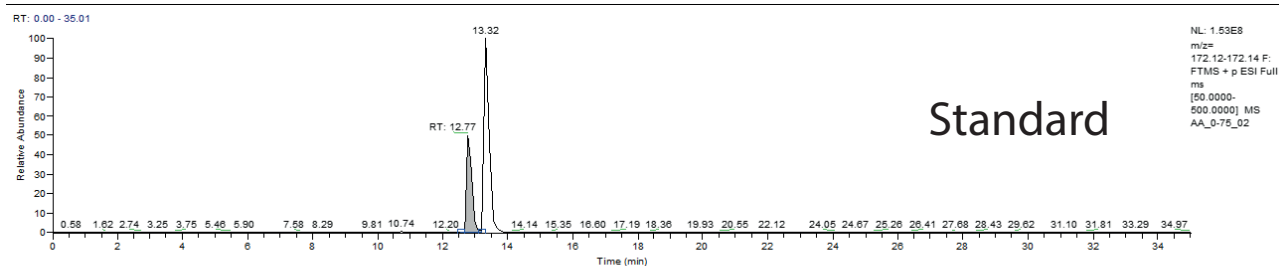


Figure S1m. Tandem Mass Spectrometry (MS²) data for cycloleucine (as an isopropyl ester)



Orgueil

No MS² data available

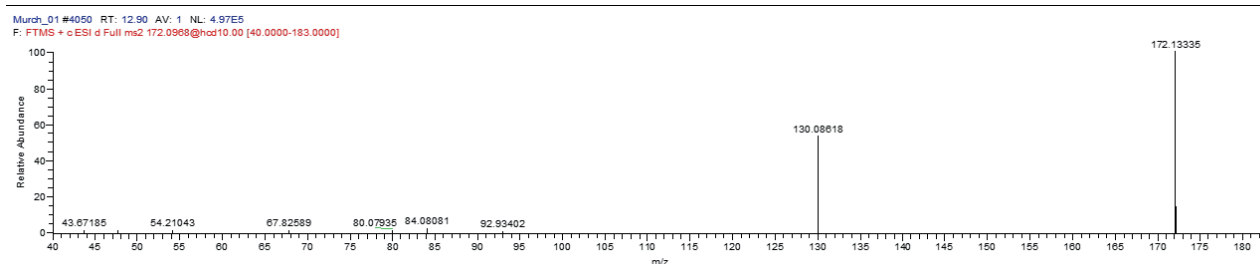
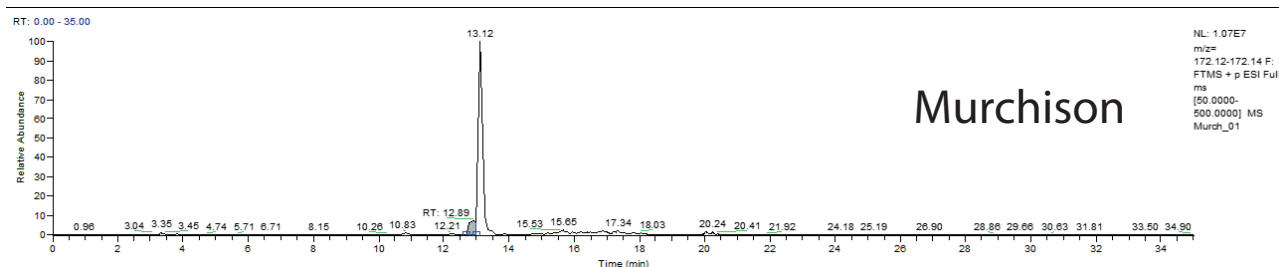
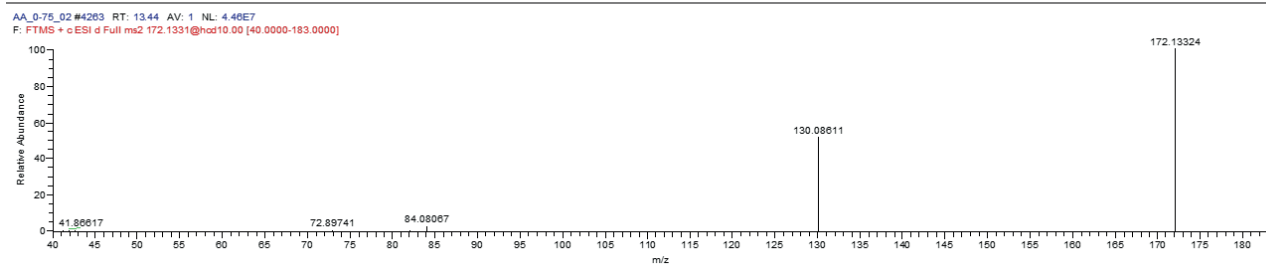
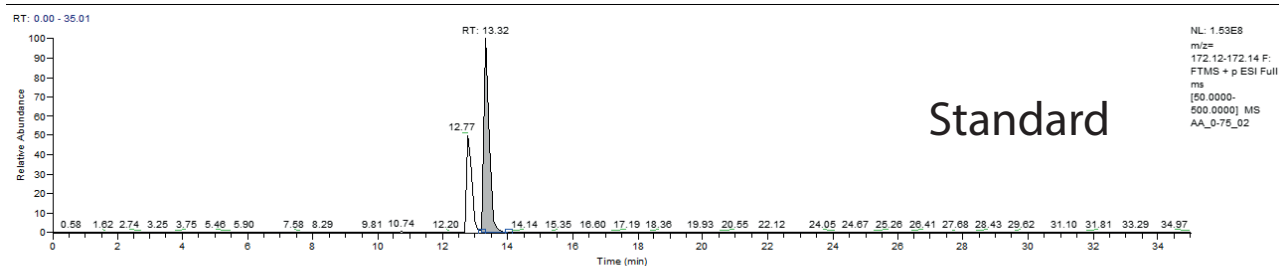


Figure S1n. Tandem Mass Spectrometry (MS²) data for **pipecolic acid** (as an isopropyl ester)



Orgueil

No MS² data available

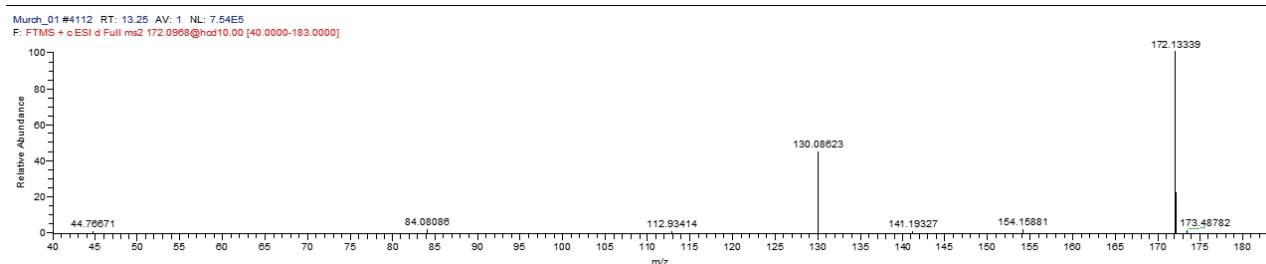
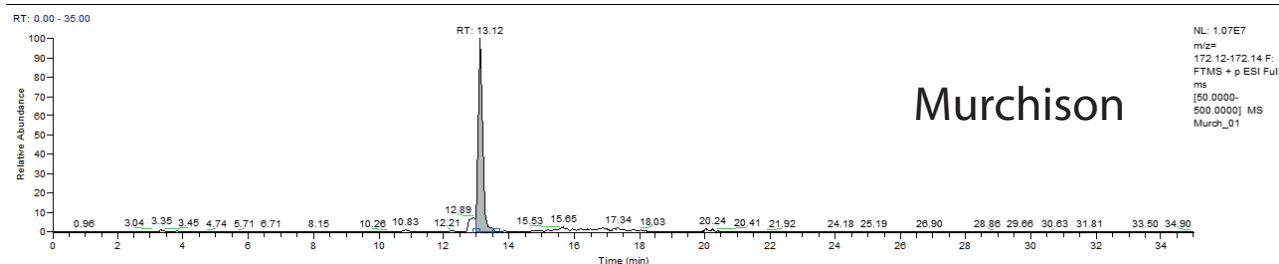


Figure S1o. Tandem Mass Spectrometry (MS²) data for α -aminopimelic acid (as an isoproyl ester)

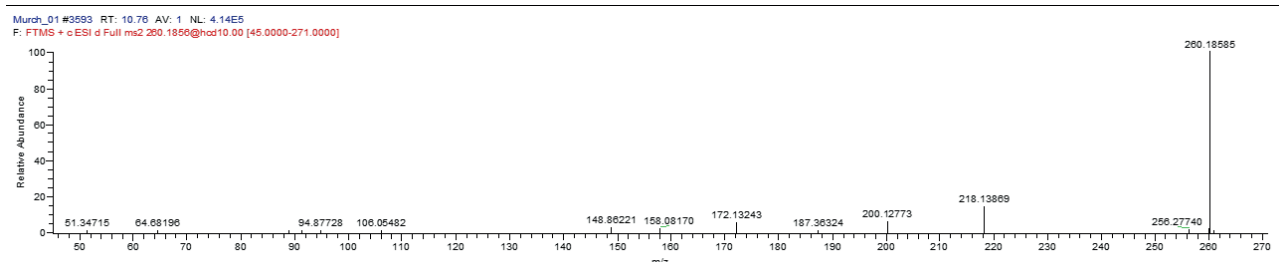
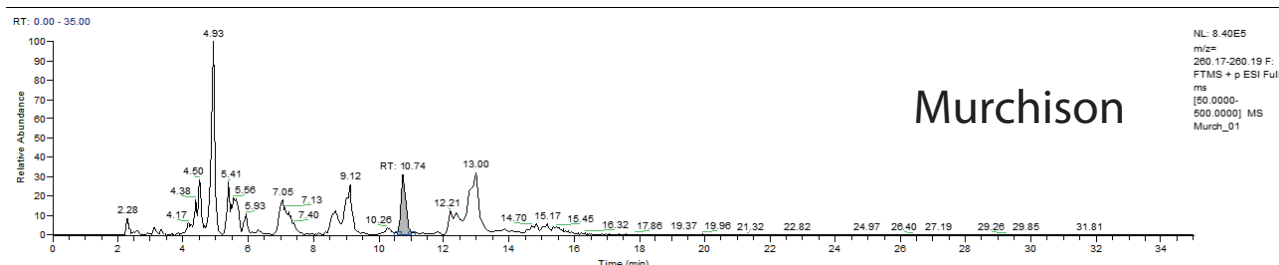
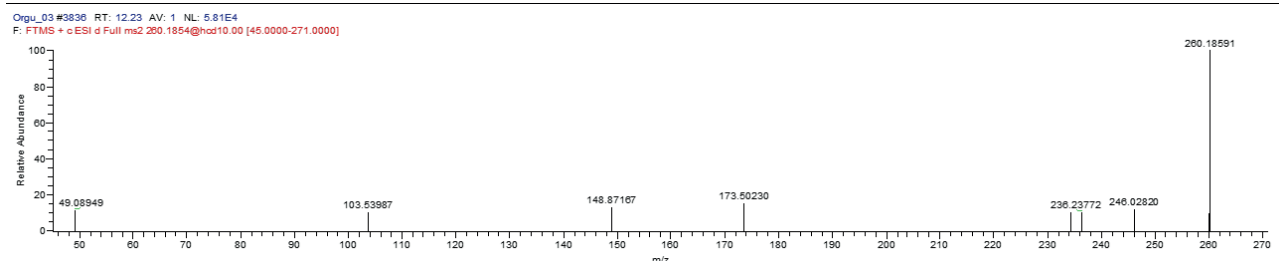
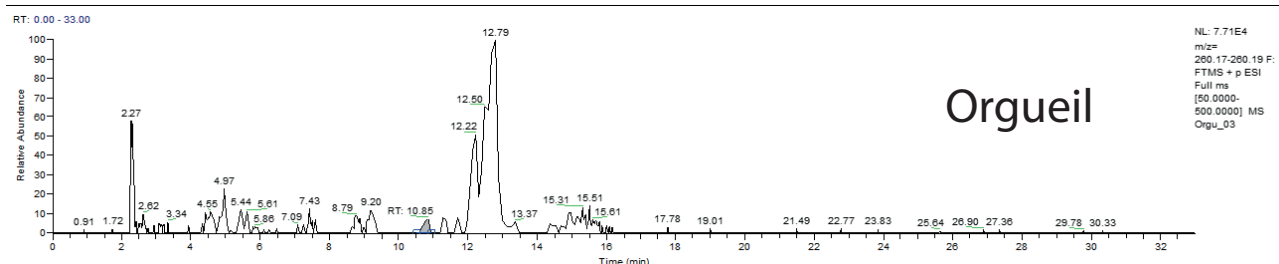
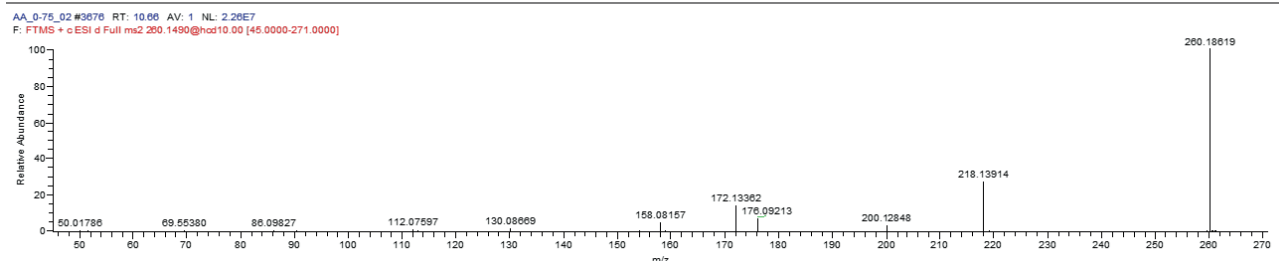
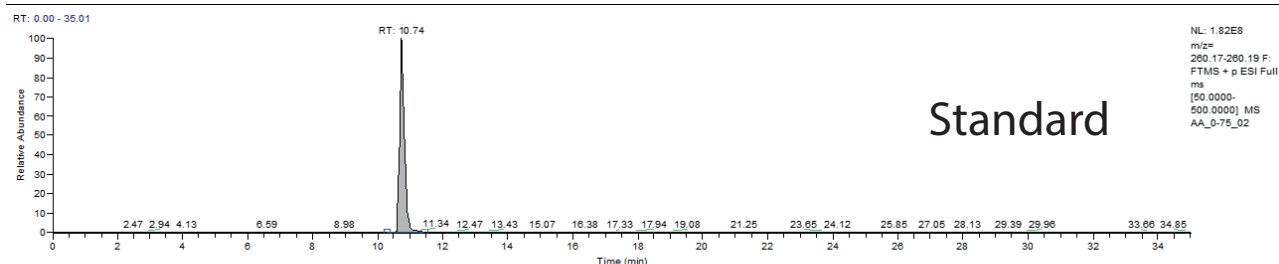
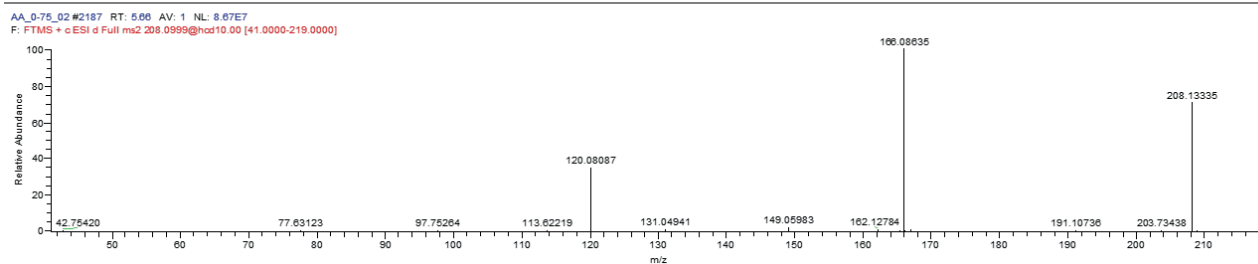
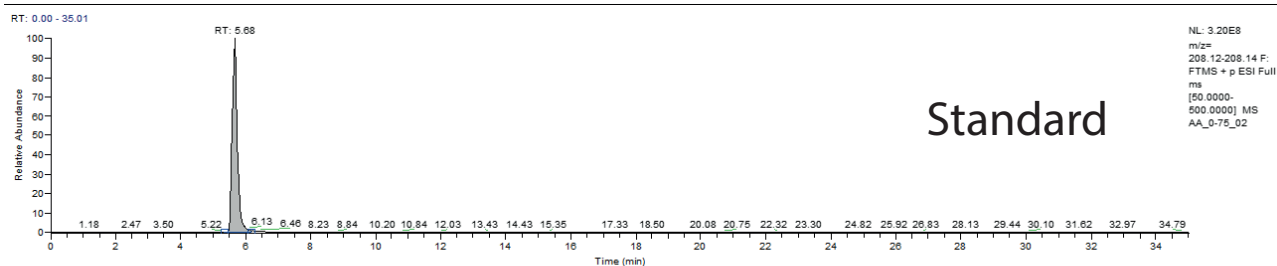


Figure S1p. Tandem Mass Spectrometry (MS²) data for phenylalanine (as an isopropyl ester)



Orgueil

BDL

