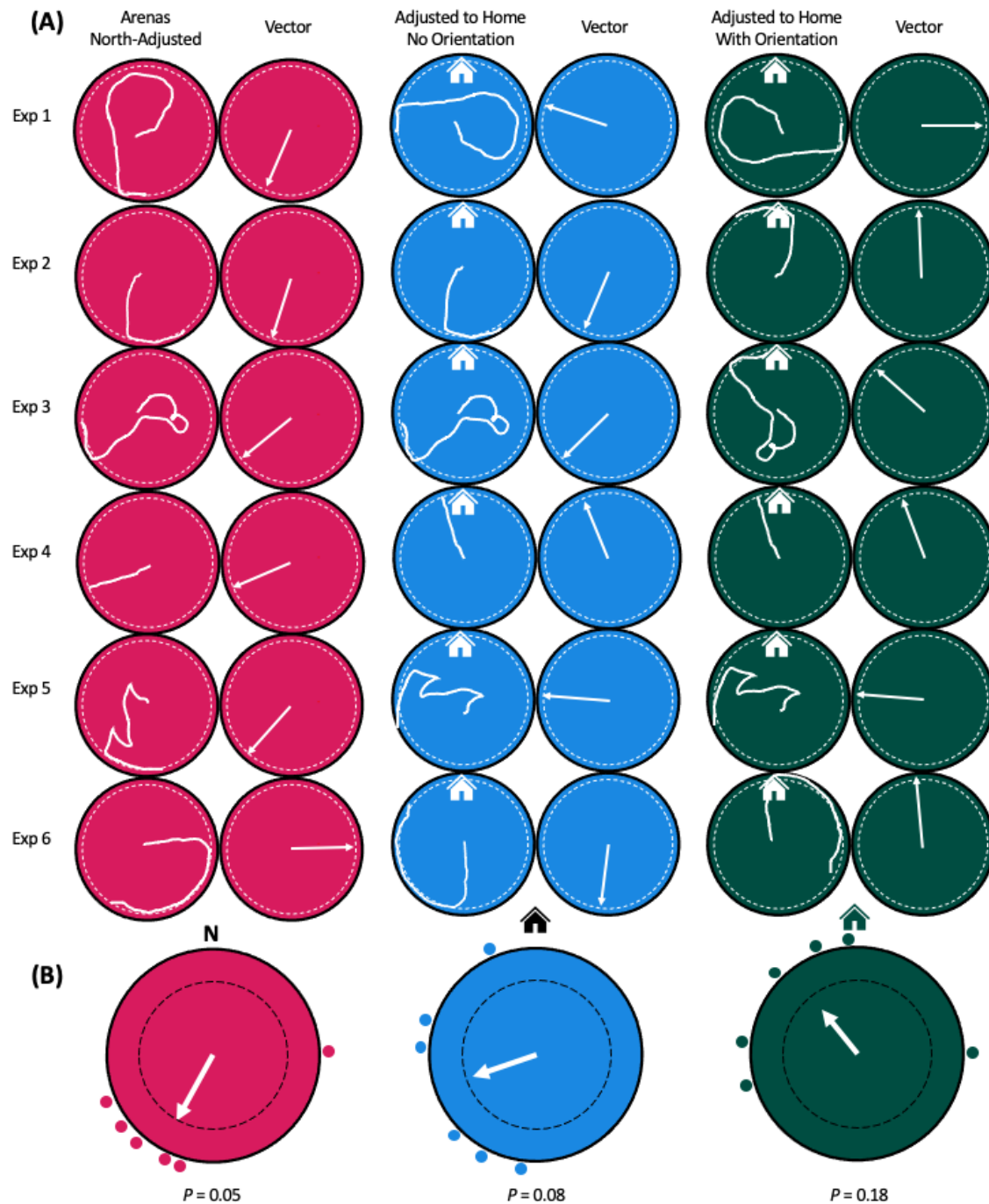
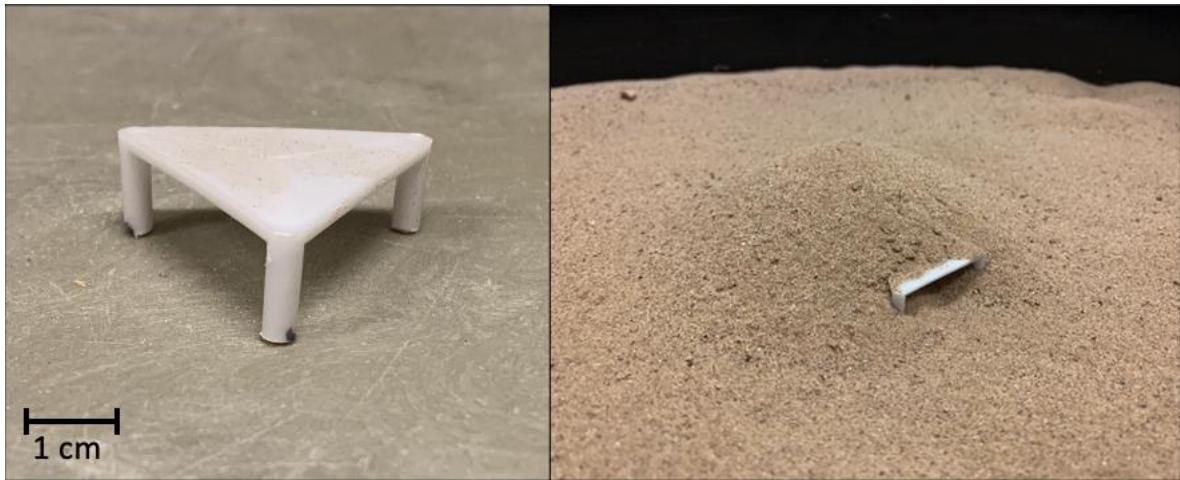


## Supplemental Materials



**Supplemental Figure 1.** Pilot study movements and patterns. **(A)** The movements of all animals in our pilot study are shown based on the adjustments described in the main text. The first column in each group shows the animal's path and the second column the angle where the animal crossed the decision line. **(B)** The mean resultant vectors for each of the groups of adjusted trials are shown along with the individual angles as dots on the periphery. The dashed black lines represent  $P = 0.05$  significance level for the resultant vectors. The  $P$ -values at bottom indicate statistical significance based on the Rayleigh test for uniformity.



**Supplemental Figure 2.** Pizza saver aid in burrowing. A triangular pizza saver was placed in the center of each homing arena and used as a structural support under the 90 ml mound of sand used by scorpions to create a home burrow (Right). The pizza saver on its own (Left) is 1 cm tall and 2.5 cm wide with three legs.