

Supplementary FIGURE LEGENDS

Figure S1. In the presence of ACE2, SKI-1 enhances the cleavage of proS at S2”.

(A) Hela cells were transfected with a cDNA empty vector (EV) alone or with one encoding WT-S glycoprotein or its furin-resistant mutants (μ S1/S2, μ AS1/S2) in the presence of absence or SKI-1. (B) Hela cells transiently expressing ACE2 and WT-S glycoprotein or its Ala-mutants (R765A, R847A). At 24h post transfection the cells were treated or not with a furin-like inhibitor BOS-981 at 3 μ M. At 48h post transfection the cell extracts were analyzed by Western blot using mAb-V5.

Figure S2. ACE2 and less so LDLR act as SARS-CoV-2 receptors. Donor HeLa cells expressing empty vector (EV) and/or the S-glycoprotein were co-cultured for 18h with acceptor TZM-bl cells expressing (A) LDLR or a combination of ACE2 and LDLR. (B) During the co-culture cells were incubated with conditioned media from HEK293 cells expressing an empty vector or WT PCSK9. The extent of fusion is represented as relative luminescence units (RLU). Representative blots of at least three independent experiments are shown. P values (****, $p < 0.0001$) were evaluated by a Student's t-test.

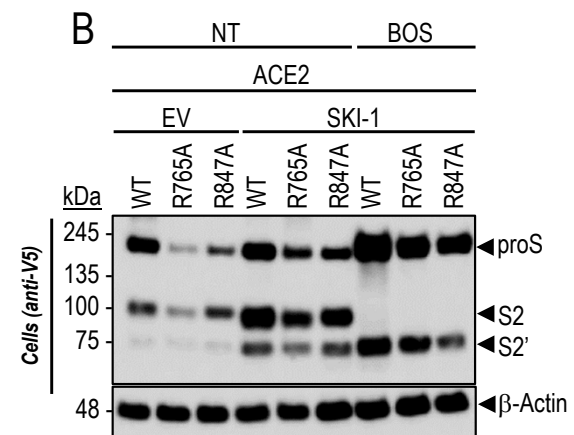
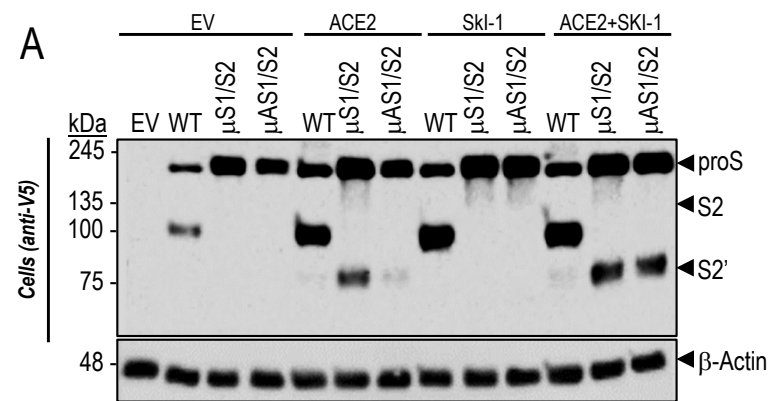
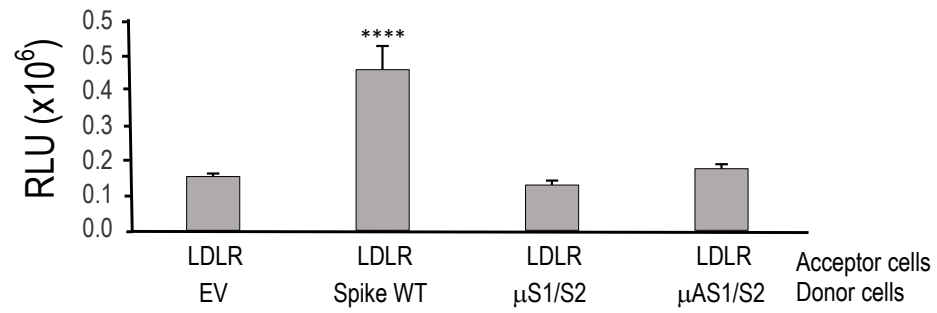


Figure S1

A



B

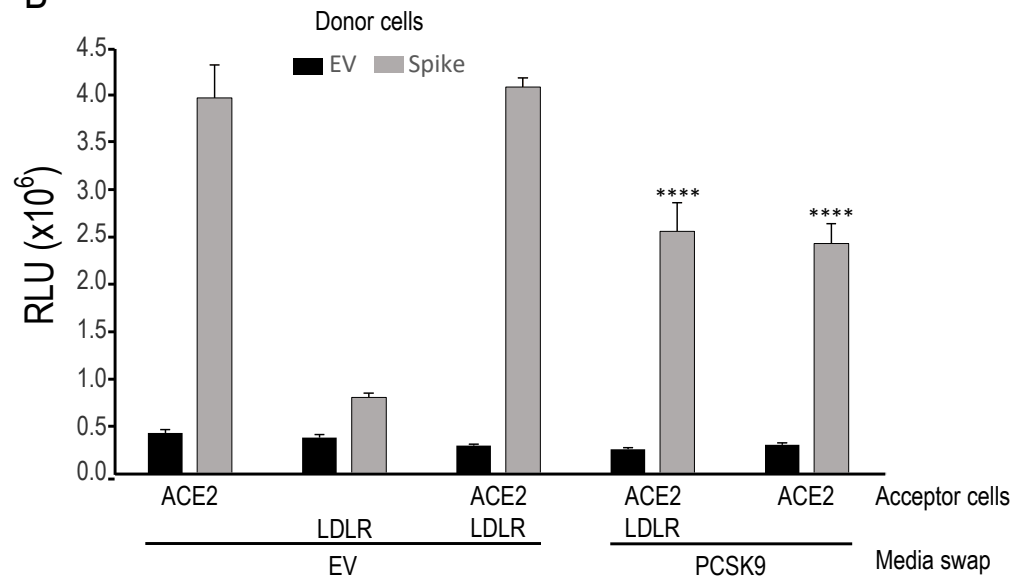


Figure S2