

Review

Lipofuscin as the Main Driving Force of Current Age-Related Disease: Justification and Strategies for Removal

Michael Renteln

University of Würzburg, Germany

* Correspondence: Michael Renteln; E-mail: mrenteln@gmail.com

Abstract: Lipofuscin is indigestible garbage that accumulates in the autophagic vesicles and cytosol of post-mitotic cells with age. Drs. Brunk and Terman postulated that lipofuscin accumulation is the main or at least a major driving factor in aging. They even posited that the evolution of memory is the reason why we get lipofuscin at all, as stable synaptic connections must be maintained over time, meaning that the somas of neurons must also remain in the same locale. In other words, they cannot dilute out their garbage over time through cell division. Mechanistically, their position certainly makes sense given that rendering a large percentage of a post-mitotic cell's lysosomes useless must almost certainly negatively affect that cell and the surrounding microenvironment. Here, I explore the possibility that the accumulation of lipofuscin to some extent underlies all other categories of age-related damage as defined by Dr. Aubrey de Grey. I do not think that lipofuscin removal will reverse/prevent all forms of aging, just the major component facing us currently. In this piece, I will review what is known about lipofuscin accumulation from evolutionary and mechanistic standpoints and discuss ways of removing it from non-dividing (or slowly-dividing) cells.

Keywords: Anti-aging therapy; lipofuscin; SENS; TFEB; intracellular microbe; and synthetic chemotaxis

1. Introduction:

Biological aging is a complex molecular processes that takes place over time in all organisms. However, organisms have evolved mechanisms to repair various forms of age-related damage. For example, DNA repair enzyme exist to fix damage in nuclear DNA. Mitophagy enables the degradation of damaged mitochondria. The immune system, when one is young at least, eliminates at least some proportion of one's senescent cells.

Years ago, Dr. Aubrey de Grey posited that there are seven types of damage that accumulate with age in the human body. These include extracellular aggregates, senescent cells, extracellular matrix stiffening, intracellular aggregates, mitochondrial mutations, cancerous cells, and cell loss/tissue atrophy. He devised a strategy to eliminate each form of damage from the body, called Strategies for Engineered Negligible Senescence (SENS)ⁱ. He is of the belief that all seven categories must be addressed before substantial life extension can be attained.

However, I believe that one of his categories, i.e., intracellular aggregate accumulation, actually underlies many of the other categories of damage - and that the removal of indigestible lysosomal garbage (lipofuscin) could, by itself, substantially extend the human lifespan. It could serve to substantially reverse aging and also prevent it (if the therapy were applied perhaps every decade or so to individuals starting at an age of ~30).

There are two arguments for lipofuscin removal being the most important goal of anti-aging science currently. One is evolutionary and one is mechanistic.

2. Evolutionary argument:

In nature, there are only a handful of organisms that can be said to be essentially biological immortal. *Hydra vulgaris* (i.e., *magnipapillata*) is one of such organisms, and the reason for this might be that its indigestible garbage is essentially released from its body over time. It has three cell lineages - ectodermal epithelial, interstitial, and endodermal epithelial. All the epithelial cells in its body column are stem cells that continuously divide - displacing cells toward its extremities. The cells at the extremities slough off eventually^{ii,iii}. In terms of the interstitial lineage, the differentiated cells that its stem cells produce are closely associated with epithelial cells and so are continuously displaced as well. This is a convenient way to dispose of lipofuscin - i.e., through dilution and cell shedding. However, it is quite plausible that at replicating (or least rapidly-dividing) neurons do not allow for long-term memory at least - as this process would conceivably prevent the stable maintenance of synaptic connections^{iv}. Lobsters continually grow throughout life; their fully differentiated cells express telomerase, allowing them to keep dividing as needed^v. This includes the cells of their central nervous system, which allows for adult neurogenesis^{vi}. They also shed their shells periodically. Thus, the same logic appears to apply to them. However, their growth process does not appear to be fast enough to prevent lipofuscin from accumulating over time^{vii}. Notably, lipofuscin accumulation in eyestalk ganglia^{viii} is used as a gauge of biological age in lobsters (and myocardial lipofuscin accumulation can be used a marker of chronological age in humans^{ix}). Lobsters can retain memories, but only for a short time span^x. Naked mole rats are also very long lived, and it has been shown that they have unusually active autophagic systems^{xi,xii} (in addition to better anti-cancer defenses^{xiii}). Even with better autophagy, naked mole rats still do accumulate lipofuscin in their post-mitotic tissues^{xiv}.

It appears as though all animals that age, e.g., flies^{xv}, worms^{xvi,xvii}, lobsters, naked mole rats, mice^{xviii}, non-human primates^{xix}, and humans^{xx} accumulate lipofuscin in their post-mitotic tissues. None of the aforementioned organisms seem to possess any evolutionarily "built-in" ways of exporting the lipofuscin that accumulates in their post-mitotic cells from their bodies, presumably because that would be an unnecessary expenditure of energy in light of procreation. Export from the post-mitotic cells themselves is possible through exocytosis^{xxi}, exosome/microvesicle secretion, or secretory autophagy. That is not too energetically costly. However, from *in vitro* studies, it does not seem as though lipofuscin is exported from post-mitotic cells very often^{xxii}. It also has never been observed *in vivo*^{xxiii}. More importantly, if exported *en masse*, there would be nowhere for the garbage to go except to be picked up by tissue-resident phagocytes, which themselves become bloated with lipofuscin - probably mostly from damaged molecules deriving from their own metabolic processes^{xxiv, xxv}. (Transfer of lipofuscin to tissue-resident through tunneling nanotubes or partial cell fusion is also theoretically possible.) Finally, I have seen no evidence in the literature that tissue-resident phagocytes - full of lipofuscin or not - are able to efficiently leave the body through migration to the gastrointestinal tract, skin, or lungs.

3. Mechanistic argument:

Lipofuscin can eventually occupy a large portion of the cytoplasm in certain cell types. If it reaches a critical level that negatively affects cellular metabolism in a large enough number of cells in a tissue, it could not only cause pathology, but also cause a downward spiral of functionality due to an exponential increase in the whole-body accumulation of the other six categories of age-related damage as defined by Dr. Aubrey de Grey. For example, damaged mitochondria will not be mitophagized as rapidly and then start to accumulate. Beta-amyloid that is normally degraded may sit around for

longer in the extracellular space and begin to form plaques. Senescent cells may start to accumulate if the tissue-resident immune cells are rendered inert either by phagocytosis of ejected lipofuscin or more likely, the general non-functionality of the parenchymal cells around them leading to dilapidation of the extracellular matrix. Cancer will be more likely to form if many microenvironments throughout the body are corrupted. Similarly, stem cell niche corruption may prevent them from replicating efficiently to replenish tissues. And, it is clear that with the extracellular matrix not being tended to properly by its resident cells, stiffening due to cross-links may occur more frequently than they can be cleaved.

It has been argued that lipofuscin is inert. Recently, more researchers are starting to look into whether it may in fact play a pathological role inside a given cell^{xx,xxvi}. Even if the damaged molecules are mostly sequestered within lysosomes and are not actively harmful to the cell, the fact that many lysosomes become full of garbage and therefore are almost surely unable to perform their normal functions nearly as well just logically seems as though it must be a major problem for the cell. If a critical threshold is reached in enough cells in a tissue, e.g., the brain, it clearly would be problematic.

Along these lines, in the cerebral cortex neurons of lamina Vb in 630-700-day old rats, lipofuscin occupies 23% of the soma volume^{xxvii,xxviii}. For humans, it was shown that multiple neuronal cell subtypes become densely packed with lipofuscin granules with age^{xxix}. Other post-mitotic cell types also accumulate substantial amounts of lipofuscin^{xxx,xxxi}. Sometimes lysosomes containing large quantities of lipofuscin or lipofuscin granules in the cytoplasm can be quite sizeable - exceeding 3 microns in diameter^{xix}. In comparison, the typical size of a lysosome in a fed, unaged cell is ~100 nm-500 nm in diameter^{xxxii}.

Also, it should be noted that many studies of lipofuscin have relied upon autofluorescence measurements^{xxxiii}, but lipofuscin is also very heterogeneous with regard to its structure and composition between different species, tissues, perhaps even cells of the same type, and when found at different concentrations^{xx}. Thus, it seems as though relying on a specific wavelength range to visualize a cell's lipofuscin deposits may not be prudent.

If one could remove the lysosomes from laden macrophages stuck at plaques in artery walls, the plaques may eventually regress, given a healthy diet and sufficient exercise as well^{xxxiv}. Similarly, with regard to extracellular plaques like beta-amyloid plaque, Le Chatelier's principle may apply. If there are fewer of the soluble protein monomers in solution in that area, the solid mass may dissolve back into solution. Parenchymal cells devoid of lipofuscin could endocytose monomers; as they are degraded, the extracellular plaques could start to dissolve and be taken up as monomers as well - for subsequent degradation. Tau tangles would be autophagocytosed and degraded as well. For the elderly, multiple rounds of lysosomal clearance may be necessary to achieve full results - because, for example, defective mitochondria could have accumulated that will be mitophagized after the initial lipofuscin clearance, which may then become lipofuscin inside the lysosomes due to extensive damage of the mitochondrial membranes by free radicals.

4. Removal strategies *in vivo* (on a cellular basis):

The simplest way to prevent lipofuscin accumulation is to prevent the excessive uptake of biomolecules from external sources via caloric restriction^{xxxv}. Caloric restriction triggers upregulated autophagy^{xxxvi}, meaning that reversal and prevention are possible to some degree through this method. Exercise also increases the degradative capacity of our cells^{xxxvii}. But, of course, these two methods alone are not enough to reverse/prevent aging in a truly substantial manner.

Dr. Aubrey de Grey, an anti-aging pioneer, first introduced me to the concept of lipofuscin through his 2005 TED talk and book that he co-authored with Michael Rae, "Ending Aging: The Rejuvenation Breakthroughs That Could Reverse Human Aging in Our Lifetime^{xxxviii}." He proposed a way of eliminating it from the body involving "xenocatabolism". It is based on his realization that lipofuscin, which is typically fluorescent,

must be eliminated from human corpses by microbial enzymes, or else graveyards would glow in the dark. He postulated that we can co-opt enzymes from soil bacteria and fungi and install them in our cells to degrade our lipofuscin^{xxxix}. However, I do not believe this will be feasible in our lifetimes at least, as lipofuscin is quite heterogeneous - it varies widely in composition between cell types and even cells of the same type, potentially^{xl}. It also varies in composition between different individuals, probably in part due to differences in diet.

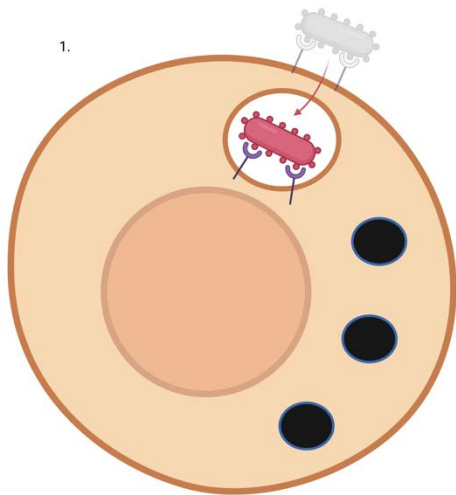
Thus, it would likely require an inordinate number of microbial enzymes to degrade the majority of our lipofuscin, almost all of which would still have to be discovered, evolved, or rationally-designed - and many of them may be toxic to our cells. There are some molecular species that seem to be major contributors to lipofuscin or lipofuscin's toxic effects at least in some cell types, like the fluorophore A2E (retina)^{xli} and the oxysterol 7-ketocholesterol (throughout the body - especially atherosclerotic plaques and the retina)^{xlii}, but we cannot neglect other organs or tissues, or they will fail and we will die anyway. It is worth looking into to see if there are major lipofuscin constituents present across a wide variety of cell types that would be very good targets. But it is unlikely, at least in my mind, that a small number of enzymes will be sufficient to degrade the majority of our lipofuscin deposits.

TFEB is the master regulator of autophagy, and its overexpression can increase lysosomal acidity and boost lysosomal hydrolase levels in lysosomes, which could help to shrink existing lipofuscin deposits in lysosomes. Here, it is important to draw a distinction between "false" and "true" lipofuscin. False lipofuscin would be any intracellular garbage that can be digested by cellular machinery if said machinery is maximally expressed. True lipofuscin is that which is indigestible by cells no matter how they are transcriptionally manipulated. But TFEB (i.e., HLH-30) overexpression only grants a 15-20% increase in lifespan for *C. elegans*^{xliii}. Presumably this is because lipofuscin still accumulates in the intestinal cells over time, even with HLH-30 overexpression. For this truly indigestible garbage, TFEB could still be of use. It also induces the exocytosis of lysosomal contents through fusion of the lysosomal and plasma membranes.

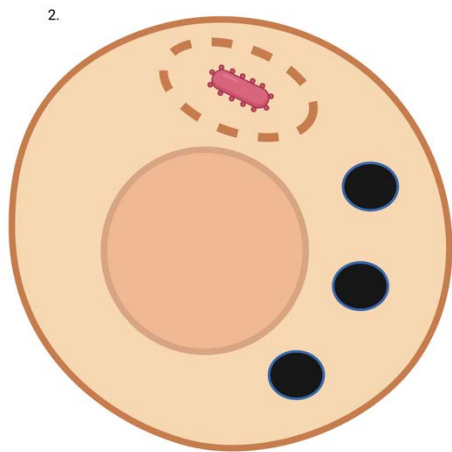
One problem with boosting endogenous exocytosis processes is that they may lose potency with age; oxidatively warped lipids from lipofuscin may insert themselves into the membranes of the lysosomes that contain them and prevent efficient fusion with the plasma membrane. The main problem, however, is that the two most well-known inducers of lysosomal exocytosis, Ca^{2+} and TFEB, do not induce a substantial amount of exocytosis - even in youthful cells^{xliv, xlv}. Perhaps over time, TFEB could work well enough to exocytose all a post-mitotic cell's lipofuscin, but other cellular mechanisms may need to be combined with TFEB for truly effective exocytosis - and there may be cell type differences in what machinery is required. A small molecule was shown to induce some lipofuscin exocytosis in monkey retinal pigment epithelial cells, which are important in macular degeneration^{xliii}. A final issue is that with lysosomal exocytosis, lipofuscin granules may break apart and/or get caught in various parts of the extracellular matrix - causing a problem by being there. The lipofuscin could also at least eventually be taken up by the same cells that ejected it, neighboring cells that need to be cleared of garbage themselves, or tissue-resident macrophages. It's probably better for the lipofuscin to be inside an intact vesicle that can prevent re-uptake - only to be picked up by bioengineered macrophages.

Lipofuscin could also theoretically be exported from post-mitotic cells through microvesicular secretion of lysosomes or by transferring lysosomes through tunneling nanotubes (TNTs) to bioengineered macrophages delivered to their locale. (However, the diameter of some lipofuscin-laden lysosomes may be too great for them to be transferred through TNTs.) Secretory autophagy may also be relevant here^{xlvi, xlvi}. Secretory autophagy utilizes autophagosomes, which are double-membrane vesicles. Perhaps a pathway involving the exocytosis of lysosomes engulfed in single-membrane vesicles could also be possible^{xlviii}.

A.



B.



C.

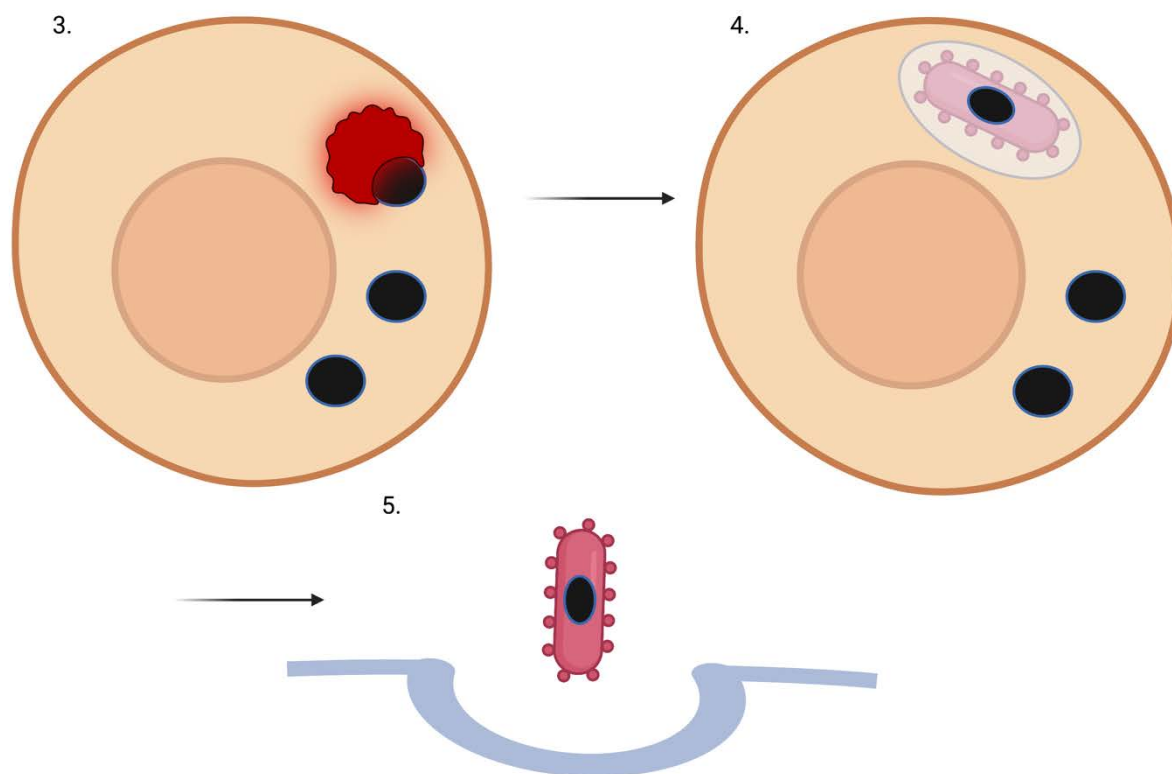


Figure 1. Lipofuscin-laden lysosome removal from a non-dividing or slowly-dividing cell using a “trash-collecting” microbe. A) The intracellular microbe enters the target post-mitotic cell. B) The intracellular microbe escapes the vacuole. C3. The intracellular microbe phagocytoses a lipofuscin-laden lysosome. Of course, not all of a target cell’s lysosomes may be full of lipofuscin. But over time, through random chance, even with new lysosomes being generated naturally or via TFEB induction - many if not most of the garbage-filled lysosomes will be removed. C4. Amoebae that have picked up indigestible lysosomal cargo re-enter a vesicle. C5. Full amoebae are ejected from the cell via exocytosis.

Instead of trying to determine which combination of proteins would promote each post-mitotic cell type to efficiently rid itself of its lipofuscin, an intracellular microbe could be harnessed to enter post-mitotic cells and engulf lipofuscin-laden lysosomes directly, then escape the cell. The smallest white blood cell with phagocytic properties has a diameter of 12-15 microns (neutrophils). Some post-mitotic cells have a diameter of around 10 microns. Thus, instead of trying to bioengineer a leukocyte to be intracellular, it might be best to use a micro-organism with a diameter of ~3 microns so that they can enter the cell and engulf lysosomes that have grown to a relatively large size due to lipofuscin accumulation. If the micro-organism could expand (i.e., if it had a ruffled membrane) to accommodate even larger cargo, that would be ideal. Perhaps phagocytic bacteria (~4-5 microns in diameter)^{xlix} would be easier to work with than amoebae in terms of having them survive inside host cells and not damage said cells. However, one micro-organism of the appropriate size and with phagocytotic properties is an amoeba known as *Massisteria voersi*^l.

Non-replicating intracellular bacteria can be rapidly generated by deleting the *dnaA* gene from the bacterial genome and inducing of a plasmid encoding the *dnaA* gene that has a temperature sensitive origin of replication^{li}. When the temperature is increased, the bacteria will lose the plasmid and become non-replicating; ampicillin can then be added to the culture to lyse the dividing cells while sparing the non-dividing cells. However, those bacteria elongate substantially and may have other metabolic abnormalities.

(Moreover, it is plausible that bacteria that are so elongated could potentially have trouble entering certain target cells.) Alternatively, RelA overexpression induces the large scale production of pppGpp and ppGpp. These two molecules are known together as (p)ppGpp, and they are known to drastically slow bacterial growth^{lii,liiii}. Thus, (perhaps truncated) RelA overexpression could be the baseline state in the trash-collecting intracellular bacteria^{liv}. However, some amount of RelA may be necessary for the vector to survive in host cells^{lv}.

Only two genes are required to change a normally extracellular bacterium to an intracellular bacterium, an invasin gene and the listeriolysin O gene from *Listeria monocytogenes*^{lvi}. Perhaps those two could be utilized here as well for an amoeba. Moreover, ActA could potentially be utilized to promote intracellular movement of the amoebae^{lvii}. The phagocytic receptors on the amoebae would be redirected to LAMP-1, a lysosomal transmembrane protein. The amoebae could also secrete Bcl-2 to prevent stress-induced apoptosis of host cells - in case its presence inside the cell is excessively detrimental to the metabolism of that cell^{lviii}. However, further bioengineering may certainly be necessary to prevent host cell cytotoxicity.

The amoebae could be bioengineered to phagocytose lysosomes only, perhaps via selective recognition of targets heavily decorated with LAMP-1^{lix}. (If LAMP-1 is too non-specific in terms of its localization on other autophagic/endocytic vesicles, an AND-gated receptor system could certainly be developed - similar to SynNotch^{lx}.) After an amoeba binds its target, there could then be a pause using a synthetic gene circuit like a temporal promoter cascade, allowing for the engulfment process to proceed and be completed. Then, the amoebae would escape via extrusion, budding, actin-mediated protrusion^{lxi}, ejection, expulsion, or exocytosis^{lxii}. Notably, *F. tularensis*, an intracellular bacterium, is known to re-enter the endocytotic compartment after cytoplasmic replication - perhaps at least in part due to its ability to then be exocytosed, spreading to neighboring cells^{lxiii}. A microbe with a T3SS might be able to translocate proteins across the vesicle into the cytoplasm to force its exocytosis. There is a *Mycobacterium tuberculosis* surface protein that promotes engulfment of the bacteria into LC3-associated autophagosomes^{lxiv}.

(Of course, prior to an amoeba engulfing a lysosome, autophagosomal engulfment must be prevented. ActA would help - through motility-dependent and motility-independent mechanisms^{lxv}. Also, expression of USP30^{lxvi, lxvii} on the surface of the amoebae could help. Production of at least the former protein should be halted when the amoeba has engulfed its target and needs to be autophagocytosed.)

TFEB expression^{lxviii} by the microbes prior to engulfment - using a time delay synthetic gene circuit, could help to consolidate garbage by promoting autophagosome-lysosome fusion and get most of the lipofuscin in vesicles rather than some of it being free in the cytoplasm. It would also be important to induce TFEB expression after engulfment, but prior to leaving - in order to force the generation of new lysosomes, so the cell is not left at a serious deficit. A small molecule that increases TFEB activity could perhaps alternatively be used instead prior to and periodically throughout treatment - such as the one currently being developed by Genierian. Incorporating TFEB activity would likely increase the overall treatment time, as it would generate new lysosomes that may be targeted by the intracellular microbes, but over time, eventually all the lipofuscin-laden lysosomes would be removed as well - and it seems much safer/like it would lead to a much more thorough "deep clean".

5. Testing the importance of lipofuscin accumulation in aging *in vitro* now:

In order to test the theory that lipofuscin is the main issue with regard to age-related disease perhaps for the next few hundred years at least, it appears that we must either figure out how to induce a particular post-mitotic cell type (e.g., a neuron derived from an iPSC) to export its garbage using a gene vector or remove its lipofuscin-laden lysosomes with host cell-autonomous means. Then we could see how long it lives in culture as opposed to normal cells of the same type. However, while primary cell cultures often

die after a few days-weeks^{lxxix}, the cause of death may not be related to normal aging. It may instead be related to infection or hyperosmolality due to evaporation of the media^{lxxx}. It was shown, however, that at ~day 25, neurons *in vitro* have an aged phenotype, including dysfunctional mitochondria, higher reactive oxygen species production, and at least one feature of senescence^{lxxxi}. It was also shown that defective autophagy was linked to this senescence-like phenotype - and that aged neurons in culture accumulate lipofuscin^{lxxxii}. Thus, if the lipofuscin were removed from the cells and new, functional lysosomes were introduced exogenously or generated through TFEB, their aged phenotype may reverse.

Another approach would be to study aged skeletal muscle cells that contain large quantities of lipofuscin taken from biopsies of elderly humans^{lxxxiii}. Their lipofuscin-laden skeletal muscle cells may also eventually die from other causes than normal aging due to culture conditions. But by removing the lipofuscin from those cells, one could at least see if markers of health are restored in the cells; i.e., defective mitochondria could be mitophagized, any cytoplasmic lipofuscin granules could eventually be autophagocytosed and delivered to lysosomes, and a senescence-like phenotype could eventually be reversed.

To get a cell to export its garbage, perhaps one could force lysosomes out to the periphery via JIP4 inhibition^{lxxxiv}, and then administer Ca^{2+} to the cell to induce fusion of the lysosomes with the plasma membrane^{lxxxv}. TFEB would subsequently be induced from another AAV vector genome in the nucleus via small molecule to induce lysosomal biogenesis^{lxxxv}. This approach would clearly be applicable to many cells in culture.

Another approach that may work and would be applicable to many cells in culture would be to target TRIM16 to LAMP-1 to force the selective encapsulation of lysosomes into an autophagosome destined for secretory autophagy^{lxxxvi}. The efficiency of secretory autophagy for these vesicles specifically could potentially be enhanced by engineering the surface-displayed TRIM16 to specifically bind to a modified Sec22b protein with very high affinity. Other downstream effectors like Stx3/4 and SNAP23/29 could be engineered to specifically interact with the modified Sec22b with very high affinity as well.

Two host cell-autonomous means occur to me. Both involve a FluidFM-based approach^{lxxxvii}. Every few days or so, a single cell could be injected with large iron particles conjugated with antibodies against LAMP-1. Then, a magnetic field could be applied to cluster the lysosomes to one small area at the plasma membrane. They would then be removed by the needle. TFEB would subsequently be induced from an AAV vector genome in the nucleus via small molecule to replenish the intracellular supply of functional lysosomes. The second means would involve the bioengineered amoebae described before. Amoebae containing large quantities of magnetic nanoparticles could infect or be injected into host cells. They could then engulf the target lysosomes. After giving them some time to do so, a magnetic field could be applied near the cell to cluster them in one small area at the plasma membrane. Then, they could be withdrawn via needle. TFEB again would be utilized here.

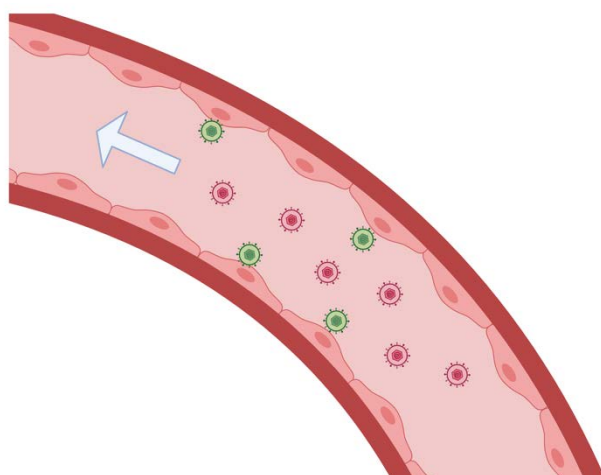
Many large therapeutic payloads cannot extravasate when injected intravenously, leading to subpar biodistribution. If we want to deliver viruses like HSV-1 or microbes to target cells throughout the body to perform therapeutic tasks, a new strategy is needed. I propose that we co-opt the ability of white blood cells to extravasate, which they have evolved to be able to do. We can potentially deliver a gene vector to vascular endothelial cells first which will inducibly allow the transmigration of bioengineered white blood cells.

6. Eventual *in vivo* strategy for delivery and pick-up of the “trash-collecting” microbes:

The trouble with trying to intravenously administer large liposomes or viral vectors, which can contain much more complex payloads, is that they cannot reach many intraparenchymal target cells throughout the body because the vascular endothelium serves

as a stringent barrier. To get the trash-collecting microbes across the vascular endothelium, we may have to employ a somewhat complex delivery system. That is to say, clinicians could infect all or the majority of a patient's vascular endothelial cells^{lxxviii} with a herpes simplex virus type 1 (HSV-1) vector. (Different pseudotypes of HSV-1 or bi-specific antibodies may be necessary to ensure that all vascular endothelial cells throughout the body are transduced; one marker may not be enough - as the gene expression pattern of vascular endothelial cells in different anatomical locales are different^{lxxix}.) They would then inducibly express from the viral genomes (upon small molecule administration) synthetic, luminal adherence proteins and chemokines^{lxxx}. These would allow for the attachment and transmigration of bioengineered macrophages. After transmigration, perhaps chemorepellents could be secreted abluminally to direct them away from the vasculature towards the interstitial matrix/parenchymal post-mitotic cells. The macrophages could then randomly migrate around until binding to a cell type of interest, at which point they could directionally secrete exosomes containing proteins that induce lipofuscin export and stimulate lysosomal biogenesis - or transfer such proteins to their target cells via tunneling nanotubes.

A.



B.

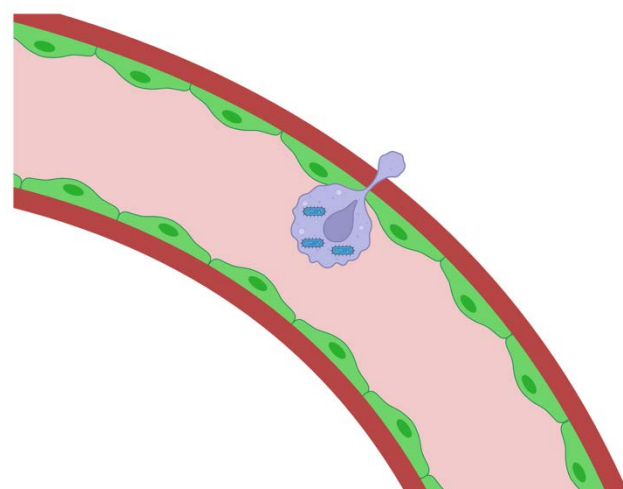


Figure 2. A) Gene vectors are administrated intravenously - and they bind to vascular endothelial cells, are internalized, and transduce them to allow control over synthetic adherence proteins and chemokines that facilitate the extravasation of

bioengineered white blood carrier cells. B) The bioengineered white blood cells carrying intracellular microbes are “smuggled” across the vascular endothelium in many regions throughout the body.

There are two important considerations here. One is that clinicians should perhaps slowly infuse the patient with bioengineered macrophages after inducing the synthetic luminal adherence proteins and chemokines, so as not to create too much stress on the vasculature. The other is that one may need to utilize superinfection exclusion (SIE) in terms of the HSV-1 vector to make sure that all or the majority of vascular endothelial cells are transduced - but without ending up with too high of a vector copy number per given cell. SIE would ideally be on the level of intracellular capsid trafficking. For example, the degradation system cited here^{lxxxix} could ensure the degradation of incoming capsids before they transfer their DNA to the nucleus^{lxxxii}. A synthetic gene circuit imbuing network-dosage compensation could also be of use in this situation potentially^{lxxxiii}. Given that the average EC lifespan is >1 year^{lxxxiv}, there is a clear therapeutic window here if the vasculature can be thoroughly transduced first. The extent of vascular endothelial transduction could be visualized via the HSV-1 thymidine kinase. And a kill switch could be included to destroy the vector genomes (based on CRISPR, for example) after lipofuscin removal treatment.

The trash-collecting microbes could be kept at a tolerable copy number inside the bioengineered macrophages and be donated through microvesicles or shed via secretory autophagy, at which point they could enter host cells. That way, a single macrophage could “infect” many post-mitotic cells. It would potentially allow one to avoid copy number maintenance of the amoebae in post-mitotic cells in the patient’s body, as conditions may vary from cell-to-cell and almost certainly from cell type-to-cell type. One would not want the amoebae replication to become excessive within a large number of the patient’s post-mitotic cells. Instead, they could simply be continuously donated by the bioengineered macrophages; they could enter target cells, engulf their lysosomes, and escape. More bioengineered macrophages or perhaps neutrophils could then pick them up; honing in on a chemoattractant molecule produced by the (full) amoebae.

The bioengineered white blood cells could recognize the membrane surrounding the full amoebae or the amoebae themselves (depending on whether a double-membraned or single-membraned vesicle is used for export) via a T-cell receptor^{lxxxv}-type strategy, and that could trigger migration to an extraction point. Perhaps engulfment of the first microbe would trigger a counting mechanism^{lxxxvi}, and when perhaps ~10 amoebae have been engulfed - the bioengineered white blood cells could be induced to migrate to an extraction point. Amoebae can probably migrate through the extracellular matrix on their own to some extent - but would also potentially cause a lot of damage. To amplify the chemoattraction signal from individual amoebae, one could bioengineer them to express a pro-drug activating enzyme, so that an exogenous small molecule could be converted into a chemoattractant signal.

Withdrawal could be effected by implanting small biodegradable beads that slowly release a chemoattractant molecule^{lxxxvii} inside small devices that serve as a trap for the bioengineered macrophages, perhaps via conjugation of antibodies to the interior of the trap that target a certain surface protein of the bioengineered macrophages. The extraction point could be laparoscopically inserted “traps” for the bioengineered white blood cells as I just mentioned, the bloodstream (where they can be filtered out through dialysis), or the intestinal lumen.

This strategy for *in vivo* treatment will likely require immunosuppression during the duration of the treatment. Perhaps immunologically “stealthed” amoebae can eventually be developed through bioengineering, however^{lxxxviii}.

The vascular endothelial glycocalyx may make the delivery of large gene vectors difficult. AAV vectors are able to reach the vascular endothelial cells beneath the glycocalyx, at least in many regions^{lxxxix,xc}. I suggested HSV, however, because I thought multiple proteins may be required to ensure extravasation of the bioengineered white

blood cells carrying intracellular, trash-collecting microbes - perhaps multiple proteins that vary based on anatomical locale. But perhaps a single, synthetic chemokine will be enough. Multiple AAVs can be employed if necessary. (An adenoviral vector is also a possibility, perhaps^{xcii}.)

If a larger gene vector is required and can only transduce only a small number of vascular endothelial cells throughout the body - that could still be enough. Imaging via HSV1-TK could let us know when the bioengineered white blood cells have reached the tissue parenchyma in various regions - and a small molecule could be intravenously administered to promote the replication of the bioengineered white blood cells in those regions. The intracellular microbes in the bioengineered white blood cells would keep pace with that division - restrained by quorum sensing. Worst case scenario, we could just manually inject every parenchymal region with bioengineered WBCs carrying the trash-collecting microbes, and promote their replicate up to a sufficient number once there via small molecule. That solution isn't pretty, but if lipofuscin is truly the main culprit in age-related disease, we simply have to do whatever is required. (Perhaps a combination of vascular transduction and intraparenchymal injections will be necessary to achieve full coverage.)

Regardless of whether this delivery system is possible in the short-term, we could at least test the importance of lipofuscin removal *in vivo* by using this system in combination with genetically engineered mice to have one or more genes already present in their genomes - driven by vascular endothelial promoters. (Here, we may not even need synthetic chemokines - if the vascular endothelium of the mice secretes human chemokines and the mice have humanized immune systems.)

Together, I call both *in vivo* lipofuscin removal approaches, "Clearance of Undigested Rubbish by Encapsulation" (CURE). That is because regardless of how the lipofuscin is ejected from post-mitotic cells, it ends up in a bioengineered leukocyte that will at some point migrate to an extraction point.

The two-step transmigration delivery system with vascular endothelial transduction and bioengineered leukocytes also applies to treating other human health conditions like genetic disease. The bioengineered leukocytes could also continuously export copies of a viral vector while wandering around within a target tissue. (One of the proteins the virus normally encodes that is essential for the replication of its DNA would be deleted and expressed by the bioengineered leukocyte. Thus, the viral DNA would be able to replicate exclusively in the nucleus of the leukocyte. It would do so up to a particular copy number - restrained by a plasmid copy number control mechanism^{xciii} - thus providing new genomes for packaging in subsequently secreted virion particles while preventing the leukocyte from being overwhelmed.) The viral vector could deliver CRISPR components to target cells. Additionally, the leukocytes could protect our cells against viral infections by secreting a gene vector encoding double-stranded RNA-activated caspase oligomerizer (DRACO)^{xciii} - or they could be used for treatment and simply secrete the DRACOs themselves. SIE and maybe a synthetic gene circuit for network-dosage compensation should be employed when continuous gene vector export is desired.

7. Conclusion:

Through synthetic biology, I believe we can clear lipofuscin from our tissues. There is a research article showing that TFEB overexpression can shrink lipofuscin deposits - but this work was done in the context of a transgenic mouse model with overproduction of an aggregating protein, which I would define as "false" lipofuscin^{xciv}. Namely, if the protein ceased to be produced and the cells weren't already completely overwhelmed, it could be degraded over a reasonable amount of time by endogenous lysosomal hydrolases.

As we have never really had a way to clear true heterogeneous, age-related lipofuscin from our cells - it would be extremely interesting to put the "garbage catastrophe theory of aging" to the test with new techniques. If clearance greatly extends the lifespan of

non-dividing cells in culture, a new delivery system may have to be designed to get these trash-collecting microbes to the target cells *in vivo*; a system of withdrawal would also be necessary. However, it is important to remember that cells in culture don't necessarily always die from the same things that they do *in vivo*.

Acknowledgments: I would like to thank Dr. Aubrey de Grey - as well as Michael Rae - for their work on anti-aging. Through Dr. Aubrey de Grey's 2005 TED talk and his book with Michael Rae, I was introduced to the concept of lipofuscin. Thank you to my family and Sid Verma for very helpful conversations. The figure in this piece was created with BioRender.com.

Competing interests: The author declares no competing interests.

Funding: Funding not received for the study.

References:

- ⁱ Zealley B, de Grey ADNJ. Strategies for Engineered Negligible Senescence. *Gerontology* (2013) 59:183–189. doi:[10.1159/000342197](https://doi.org/10.1159/000342197)
- ⁱⁱ Siebert S, Farrell JA, Cazet JF, et al. Stem Cell Differentiation Trajectories in Hydra Resolved at Single-Cell Resolution. *Science* 2019;365(6451):eaav9314; doi: [10.1126/science.aav9314](https://doi.org/10.1126/science.aav9314).
- ⁱⁱⁱ Murad R, Macias-Muñoz A, Wong A, et al. Coordinated Gene Expression and Chromatin Regulation during Hydra Head Regeneration. *Genome Biology and Evolution* 2021;13(12):evab221; doi: [10.1093/gbe/evab221](https://doi.org/10.1093/gbe/evab221).
- ^{iv} Terman A, Brunk UT. Is aging the price for memory? *Biogerontology* (2005) 6:205–210. doi:[10.1007/s10522-005-7956-3](https://doi.org/10.1007/s10522-005-7956-3)
- ^v Klapper W, Kühne K, Singh KK, Heidorn K, Parwaresch R, Krupp G. Longevity of lobsters is linked to ubiquitous telomerase expression. *FEBS Letters* (1998) **439**:143–146. doi: [10.1016/S0014-5793\(98\)01357-X](https://doi.org/10.1016/S0014-5793(98)01357-X)
- ^{vi} Beltz BS, Sandeman DC. Regulation of life-long neurogenesis in the decapod crustacean brain. *Arthropod Structure & Development* (2003) **32**:39–60. doi: [10.1016/S1467-8039\(03\)00038-0](https://doi.org/10.1016/S1467-8039(03)00038-0)
- ^{vii} Peregrim I. Why we age — a new evolutionary view. *Biologia* (2017) **72**:475–485. doi: [10.1515/biolog-2017-0064](https://doi.org/10.1515/biolog-2017-0064)
- ^{viii} Sheehy M, Shelton P, Wickins J, Belchier M, Gaten E. Ageing the European lobster *Homarus gammarus* by the lipofuscin in its eyestalk ganglia. *Mar Ecol Prog Ser* (1996) **143**:99–111. doi: [10.3354/meps143099](https://doi.org/10.3354/meps143099)
- ^{ix} Kakimoto Y, Okada C, Kawabe N, Sasaki A, Tsukamoto H, Nagao R, Osawa M. Myocardial lipofuscin accumulation in ageing and sudden cardiac death. *Sci Rep* (2019) 9:3304. doi:[10.1038/s41598-019-40250-0](https://doi.org/10.1038/s41598-019-40250-0)
- ^x Karavanich C, Atema J. Individual recognition and memory in lobster dominance. *Animal Behaviour* (1998) 56:1553–1560. doi:[10.1006/anbe.1998.0914](https://doi.org/10.1006/anbe.1998.0914)
- ^{xi} Zhao S, Lin L, Kan G, Xu C, Tang Q, Yu C, Sun W, Cai L, Xu C, Cui S. High autophagy in the naked mole rat may play a significant role in maintaining good health. *Cell Physiol Biochem* (2014) **33**:321–332. doi: [10.1159/000356672](https://doi.org/10.1159/000356672)
- ^{xii} Triplett JC, Tramutola A, Swomley A, Kirk J, Grimes K, Lewis K, Orr M, Rodriguez K, Cai J, Klein JB, et al. Age-related changes in the proteostasis network in the brain of the naked mole-rat: Implications promoting healthy longevity. *Biochimica et Biophysica Acta (BBA) - Molecular Basis of Disease* (2015) **1852**:2213–2224. doi: [10.1016/j.bbadis.2015.08.002](https://doi.org/10.1016/j.bbadis.2015.08.002)
- ^{xiii} Hadi F, Kulaberoglu Y, Lazarus KA, Bach K, Ugur R, Beattie P, Smith ESJ, Khaled WT. Transformation of naked mole-rat cells. *Nature* (2020) **583**:E1–E7. doi: [10.1038/s41586-020-2410-x](https://doi.org/10.1038/s41586-020-2410-x)
- ^{xiv} Edrey YH, Hanes M, Pinto M, Mele J, Buffenstein R. Successful aging and sustained good health in the naked mole rat: a long-lived mammalian model for biogerontology and biomedical research. *ILAR J* (2011) **52**:41–53. doi: [10.1093/ilar.52.1.41](https://doi.org/10.1093/ilar.52.1.41)
- ^{xv} Panno JP, Nair KK. Effects of increased lifespan on chromatin condensation in the adult male housefly. *Mech Ageing Dev* (1986) **35**:31–38. doi: [10.1016/0047-6374\(86\)90063-1](https://doi.org/10.1016/0047-6374(86)90063-1)

- xvi Clokey GV, Jacobson LA. The autofluorescent “lipofuscin granules” in the intestinal cells of *Caenorhabditis elegans* are secondary lysosomes. *Mech Ageing Dev* (1986) **35**:79–94. doi: [10.1016/0047-6374\(86\)90068-0](https://doi.org/10.1016/0047-6374(86)90068-0)
- xvii Houthoofd K, Braeckman BP, Lenaerts I, Brys K, De Vreese A, Van Eygen S, Vanfleteren JR. Ageing is reversed, and metabolism is reset to young levels in recovering dauer larvae of *C. elegans*. *Exp Gerontol* (2002) **37**:1015–1021. doi: [10.1016/s0531-5565\(02\)00063-3](https://doi.org/10.1016/s0531-5565(02)00063-3)
- xviii Goyal VK. Lipofuscin pigment accumulation in the central nervous system of the mouse during aging. *Exp Gerontol* (1982) **17**:89–94. doi: [10.1016/0531-5565\(82\)90041-9](https://doi.org/10.1016/0531-5565(82)90041-9)
- xix Gilissen EP, Staneva-Dobrovski L. Distinct Types of Lipofuscin Pigment in the Hippocampus and Cerebellum of Aged Cheirogaleid Primates. *The Anatomical Record* (2013) **296**:1895–1906. doi: [10.1002/ar.22809](https://doi.org/10.1002/ar.22809)
- xx Moreno-García A, Kun A, Calero O, Medina M, Calero M. An Overview of the Role of Lipofuscin in Age-Related Neurodegeneration. *Frontiers in Neuroscience* (2018) **12**: <https://www.frontiersin.org/article/10.3389/fnins.2018.00464> [Accessed March 31, 2022]
- xxi Gray DA and Woulfe J. Lipofuscin and Aging: A Matter of Toxic Waste. *Science of Aging Knowledge Environment* 2005;2005(5):re1–re1; doi: [10.1126/sageke.2005.5.re1](https://doi.org/10.1126/sageke.2005.5.re1).
- xxii Terman A, Brunk UT. Is Lipofuscin Eliminated from Cells? *Investigative Ophthalmology & Visual Science* (1999) **40**:2463–2464.
- xxiii Julien S, Schraermeyer U. Lipofuscin can be eliminated from the retinal pigment epithelium of monkeys. *Neurobiol Aging* (2012) **33**:2390–2397. doi: [10.1016/j.neurobiolaging.2011.12.009](https://doi.org/10.1016/j.neurobiolaging.2011.12.009)
- xxiv O’Neil SM, Witcher KG, McKim DB, Godbout JP. Forced turnover of aged microglia induces an intermediate phenotype but does not rebalance CNS environmental cues driving priming to immune challenge. *Acta Neuropathologica Communications* (2018) **6**:129. doi: [10.1186/s40478-018-0636-8](https://doi.org/10.1186/s40478-018-0636-8)
- xxv Burns JC, Cotleur B, Walther DM, Bajrami B, Rubino SJ, Wei R, Franchimont N, Cotman SL, Ransohoff RM, Mingueneau M. Differential accumulation of storage bodies with aging defines discrete subsets of microglia in the healthy brain. *eLife* (2020) **9**:e57495. doi: [10.7554/eLife.57495](https://doi.org/10.7554/eLife.57495)
- xxvi Brunk UT, Terman A. Lipofuscin: mechanisms of age-related accumulation and influence on cell function. *Free Radic Biol Med* (2002) **33**:611–619. doi: [10.1016/s0891-5849\(02\)00959-0](https://doi.org/10.1016/s0891-5849(02)00959-0)
- xxvii Samorajski T, Ordy JM, Rady-Reimer P. Lipofuscin pigment accumulation in the nervous system of aging mice. *The Anatomical Record* (1968) **160**:555–573. doi: [10.1002/ar.1091600305](https://doi.org/10.1002/ar.1091600305)
- xxviii Brizzee KR, Johnson FA. Depth distribution of lipofuscin pigment in cerebral cortex of albino rat. *Acta Neuropathol* (1970) **16**:205–219. doi: [10.1007/BF00687360](https://doi.org/10.1007/BF00687360)
- xxix Mann DM, Yates PO, Stamp JE. The relationship between lipofuscin pigment and ageing in the human nervous system. *J Neurol Sci* (1978) **37**:83–93. doi: [10.1016/0022-510x\(78\)90229-0](https://doi.org/10.1016/0022-510x(78)90229-0)
- xxx Dayan D, Abrahami I, Buchner A, Gorsky M, Chimovitz N. Lipid pigment (lipofuscin) in human perioral muscles with aging. *Experimental Gerontology* (1988) **23**:97–102. doi: [10.1016/0531-5565\(88\)90074-5](https://doi.org/10.1016/0531-5565(88)90074-5)
- xxxi Wing GL, Blanchard GC, Weiter JJ. The topography and age relationship of lipofuscin concentration in the retinal pigment epithelium. *Investigative Ophthalmology & Visual Science* (1978) **17**:601–607.
- xxxii Xu H, Ren D. Lysosomal Physiology. *Annu Rev Physiol* (2015) **77**:57–80. doi: [10.1146/annurev-physiol-021014-071649](https://doi.org/10.1146/annurev-physiol-021014-071649)
- xxxiii Kakimoto Y, Okada C, Kawabe N, Sasaki A, Tsukamoto H, Nagao R, Osawa M. Myocardial lipofuscin accumulation in ageing and sudden cardiac death. *Sci Rep* (2019) **9**:3304. doi: [10.1038/s41598-019-40250-0](https://doi.org/10.1038/s41598-019-40250-0)
- xxxiv Jaffer FA, Blankstein R. Getting Down With Diet and Exercise for Coronary Artery Disease Treatment. *JACC: Cardiovascular Imaging* (2021) **14**:1203–1205. doi: [10.1016/j.jcmg.2021.01.003](https://doi.org/10.1016/j.jcmg.2021.01.003)

- xxxv Idrobo F, Nandy K, Mostofsky DI, Blatt L, Nandy L. Dietary restriction: effects on radial maze learning and lipofuscin pigment deposition in the hippocampus and frontal cortex. *Archives of Gerontology and Geriatrics* (1987) **6**:355–362. doi: [10.1016/0167-4943\(87\)90014-8](https://doi.org/10.1016/0167-4943(87)90014-8)
- xxxvi Chung KW, Chung HY. The Effects of Calorie Restriction on Autophagy: Role on Aging Intervention. *Nutrients* (2019) **11**:2923. doi: [10.3390/nu11122923](https://doi.org/10.3390/nu11122923)
- xxxvii Subramanyam MVV. Dietary vitamin E and physical exercise: II. Antioxidant status and lipofuscin-like substances in aging rat heart. https://core.ac.uk/reader/72797312?utm_source=linkout [Accessed April 5, 2022]
- xxxviii de Grey A, Rae M, (eds). ENDING AGING: The Rejuvenation Breakthroughs That Could Reverse Human Aging in Our Lifetime. St. Martin's Press: U.S.; 2007.
- xxxix de Grey AD. Appropriating Microbial Catabolism: A Proposal to Treat and Prevent Neurodegeneration. *Neurobiology of aging* 2006;27(4):589–595.
- xl Boellaard JW and Schlote W. Ultrastructural Heterogeneity of Neuronal Lipofuscin in the Normal Human Cerebral Cortex. *Acta Neuropathol* 1986;71(3–4):285–294; doi: [10.1007/BF00688051](https://doi.org/10.1007/BF00688051).
- xli Sparrow JR, Parish CA, Hashimoto M, et al. A2E, a Lipofuscin Fluorophore, in Human Retinal Pigmented Epithelial Cells in Culture. *Investigative Ophthalmology & Visual Science* 1999;40(12):2988–2995.
- xlii Anderson A, Campo A, Fulton E, et al. 7-Ketocholesterol in Disease and Aging. *Redox Biology* 2020;29:101380; doi: [10.1016/j.redox.2019.101380](https://doi.org/10.1016/j.redox.2019.101380).
- xliiii Lapierre LR, De Magalhaes Filho CD, McQuary PR, Chu C-C, Visvikis O, Chang JT, Gelino S, Ong B, Davis AE, Irazoqui JE, et al. The TFEB orthologue HLH-30 regulates autophagy and modulates longevity in *Caenorhabditis elegans*. *Nat Commun* (2013) **4**:2267. doi: [10.1038/ncomms3267](https://doi.org/10.1038/ncomms3267)
- xliiii Jaiswal JK, Andrews NW, Simon SM. Membrane proximal lysosomes are the major vesicles responsible for calcium-dependent exocytosis in nonsecretory cells. *Journal of Cell Biology* (2002) **159**:625–635. doi: [10.1083/jcb.200208154](https://doi.org/10.1083/jcb.200208154)
- xliv Medina DL, Fraldi A, Bouche V, Annunziata F, Mansueto G, Spanpanato C, Puri C, Pignata A, Martina JA, Sardiello M, et al. Transcriptional Activation of Lysosomal Exocytosis Promotes Cellular Clearance. *Dev Cell* (2011) **21**:421–430. doi: [10.1016/j.devcel.2011.07.016](https://doi.org/10.1016/j.devcel.2011.07.016)
- xlvi Autophagy sequesters damaged lysosomes to control lysosomal biogenesis and kidney injury. *The EMBO Journal* (2013) **32**:2336–2347. doi: [10.1038/emboj.2013.171](https://doi.org/10.1038/emboj.2013.171)
- xlvii Martinelli S, Anderzhanova EA, Bajaj T, Wiechmann S, Dethloff F, Weckmann K, Heinz DE, Ebert T, Hartmann J, Geiger TM, et al. Stress-primed secretory autophagy promotes extracellular BDNF maturation by enhancing MMP9 secretion. *Nat Commun* (2021) **12**:4643. doi: [10.1038/s41467-021-24810-5](https://doi.org/10.1038/s41467-021-24810-5)
- xlviii Florey O, Kim SE, Sandoval CP, Haynes CM, Overholtzer M. Autophagy machinery mediates macroendocytic processing and entotic cell death by targeting single membranes. *Nat Cell Biol* (2011) **13**:1335–1343. doi: [10.1038/ncb2363](https://doi.org/10.1038/ncb2363)
- xlix Shiratori T, Suzuki S, Kakizawa Y, Ishida K. Phagocytosis-like cell engulfment by a planctomycete bacterium. *Nat Commun* (2019) **10**:5529. doi: [10.1038/s41467-019-13499-2](https://doi.org/10.1038/s41467-019-13499-2)
- ¹ Mylnikov AP, Weber F, Jürgens K, Wylezich C. *Massisteria marina* has a sister: *Massisteria voersi* sp. nov., a rare species isolated from coastal waters of the Baltic Sea. *Eur J Protistol* (2015) **51**:299–310. doi:[10.1016/j.ejop.2015.05.002](https://doi.org/10.1016/j.ejop.2015.05.002)
- ⁱⁱ Yoon, Y. G. & Koob, M. D. Nonreplicating Intracellular Bacterial Vector for Conjugative DNA Transfer into Mitochondria. *Pharm Res* **29**, 1040–1045 (2012).
- ⁱⁱⁱ Dutta, N. K. *et al.* Inhibiting the stringent response blocks *Mycobacterium tuberculosis* entry into quiescence and reduces persistence. *Science Advances* **5**, eaav2104 (2019).
- ⁱⁱⁱⁱ Sinha, A. K. & Winther, K. S. The RelA hydrolase domain acts as a molecular switch for (p)ppGpp synthesis. *Commun Biol* **4**, 1–10 (2021).

-
- liv Schreiber, G. *et al.* Overexpression of the relA gene in Escherichia coli. *J Biol Chem* **266**, 3760–3767 (1991).
- lv Taylor, C. M. *et al.* Listeria monocytogenes relA and hpt mutants are impaired in surface-attached growth and virulence. *J Bacteriol* **184**, 621–628 (2002).
- lvi Grillot-Courvalin C, Goussard S, Huetz F, Ojcius DM, Courvalin P. Functional gene transfer from intracellular bacteria to mammalian cells. *Nat Biotechnol* (1998) **16**:862–866. doi:[10.1038/nbt0998-862](https://doi.org/10.1038/nbt0998-862)
- lvii Yi J, Schmidt J, Chien A, Montemagno CD. Engineering an artificial amoeba propelled by nanoparticle-triggered actin polymerization. *Nanotechnology* (2009) **20**:085101. doi: [10.1088/0957-4484/20/8/085101](https://doi.org/10.1088/0957-4484/20/8/085101)
- lviii Bilbao G, Contreras JL, Zhang H-G, Pike MJ, Overturf K, Mikheeva G, Krasnykh V, Curiel DT. Adenovirus-mediated gene expression in vivo is enhanced by the antiapoptotic bcl-2 gene. *Journal of virology* (1999) **73**:6992–7000.
- lix Xu X, Pan M, Jin T. How Phagocytes Acquired the Capability of Hunting and Removing Pathogens From a Human Body: Lessons Learned From Chemotaxis and Phagocytosis of Dictyostelium discoideum (Review). *Frontiers in Cell and Developmental Biology* (2021) **9**: <https://www.frontiersin.org/article/10.3389/fcell.2021.724940> [Accessed April 15, 2022]
- lx Morsut L, Roybal KT, Xiong X, Gordley RM, Coyle SM, Thomson M, Lim WA. Engineering Customized Cell Sensing and Response Behaviors Using Synthetic Notch Receptors. *Cell* (2016) **164**:780–791. doi: [10.1016/j.cell.2016.01.012](https://doi.org/10.1016/j.cell.2016.01.012)
- lxi Ortega FE, Koslover EF, Theriot JA. Listeria monocytogenes cell-to-cell spread in epithelia is heterogeneous and dominated by rare pioneer bacteria. Garrett WS, Orth K, Slauch J, et al. eds. *eLife* 2019;8:e40032; doi: [10.7554/eLife.40032](https://doi.org/10.7554/eLife.40032).
- lxii Flieger A, Frischknecht F, Häcker G, et al. Pathways of host cell exit by intracellular pathogens. *Microbial Cell* 2018;5(12):525–544; doi: [10.15698/mic2018.12.659](https://doi.org/10.15698/mic2018.12.659).
- lxiii Checroun C, Wehrly TD, Fischer ER, et al. Autophagy-mediated reentry of Francisella tularensis into the endocytic compartment after cytoplasmic replication. *Proceedings of the National Academy of Sciences* 2006;103(39):14578–14583; doi: [10.1073/pnas.0601838103](https://doi.org/10.1073/pnas.0601838103).
- lxiv Chai Q, Wang X, Qiang L, et al. A Mycobacterium tuberculosis surface protein recruits ubiquitin to trigger host xenophagy. *Nature Communications* 2019;10(1):1973; doi: [10.1038/s41467-019-09955-8](https://doi.org/10.1038/s41467-019-09955-8).
- lxv Yoshikawa Y, Ogawa M, Hain T, Yoshida M, Fukumatsu M, Kim M, Mimuro H, Nakagawa I, Yanagawa T, Ishii T, et al. Listeria monocytogenes ActA-mediated escape from autophagic recognition. *Nat Cell Biol* (2009) **11**:1233–1240. doi:[10.1038/ncb1967](https://doi.org/10.1038/ncb1967)
- lxvi Manzanillo PS, Ayres JS, Watson RO, Collins AC, Souza G, Rae CS, Schneider DS, Nakamura K, Shiloh MU, Cox JS. The ubiquitin ligase parkin mediates resistance to intracellular pathogens. *Nature* (2013) **501**:512–516. doi:[10.1038/nature12566](https://doi.org/10.1038/nature12566)
- lxvii Bingol B, Tea JS, Phu L, Reichelt M, Bakalarski CE, Song Q, Foreman O, Kirkpatrick DS, Sheng M. The mitochondrial deubiquitinase USP30 opposes parkin-mediated mitophagy. *Nature* (2014) **510**:370–375. doi:[10.1038/nature13418](https://doi.org/10.1038/nature13418)
- lxviii Torra A, Parent A, Cuadros T, Rodríguez-Galván B, Ruiz-Bronchal E, Ballabio A, Bortolozzi A, Vila M, Bové J. Overexpression of TFEB Drives a Pleiotropic Neurotrophic Effect and Prevents Parkinson’s Disease-Related Neurodegeneration. *Mol Ther* (2018) **26**:1552–1567. doi: [10.1016/j.ymthe.2018.02.022](https://doi.org/10.1016/j.ymthe.2018.02.022)
- lxix Li Z. “5.43 - In Vitro Micro-Tissue and -Organ Models for Toxicity Testing.” In: Moo-Young M, editor. *Comprehensive Biotechnology (Second Edition)*. Burlington: Academic Press (2011). p. 551–563 doi: [10.1016/B978-0-08-088504-9.00503-1](https://doi.org/10.1016/B978-0-08-088504-9.00503-1)
- lxx Potter SM, DeMarse TB. A new approach to neural cell culture for long-term studies. *Journal of Neuroscience Methods* (2001) **110**:17–24. doi: [10.1016/S0165-0270\(01\)00412-5](https://doi.org/10.1016/S0165-0270(01)00412-5)
- lxxi Dong W, Cheng S, Huang F, Fan W, Chen Y, Shi H, He H. Mitochondrial dysfunction in long-term neuronal cultures mimics changes with aging. *Med Sci Monit* (2011) **17**:BR91–BR96. doi: [10.12659/MSM.881706](https://doi.org/10.12659/MSM.881706)

- lxxii Moreno-Blas D, Gorostieta-Salas E, Pommer-Alba A, Muciño-Hernández G, Gerónimo-Olvera C, Maciel-Barón LA, Königsberg M, Massieu L, Castro-Obregón S. Cortical neurons develop a senescence-like phenotype promoted by dysfunctional autophagy. *Aging (Albany NY)* (2019) **11**:6175–6198. doi: [10.18632/aging.102181](https://doi.org/10.18632/aging.102181)
- lxxiii Triolo M, Hood DA. Manifestations of Age on Autophagy, Mitophagy and Lysosomes in Skeletal Muscle. *Cells* (2021) **10**:1054. doi: [10.3390/cells10051054](https://doi.org/10.3390/cells10051054)
- lxxiv Willett R, Martina JA, Zewe JP, Wills R, Hammond GRV, Puertollano R. TFEB regulates lysosomal positioning by modulating TMEM55B expression and JIP4 recruitment to lysosomes. *Nat Commun* (2017) **8**:1580. doi: [10.1038/s41467-017-01871-z](https://doi.org/10.1038/s41467-017-01871-z)
- lxxv Wurmthaler LA, Sack M, Gense K, Hartig JS, Gamberdinger M. A tetracycline-dependent ribozyme switch allows conditional induction of gene expression in *Caenorhabditis elegans*. *Nat Commun* (2019) **10**:491. doi: [10.1038/s41467-019-08412-w](https://doi.org/10.1038/s41467-019-08412-w)
- lxxvi Dedicated SNAREs and specialized TRIM cargo receptors mediate secretory autophagy. *The EMBO Journal* (2017) **36**:42–60. doi: [10.15252/embj.201695081](https://doi.org/10.15252/embj.201695081)
- lxxvii Gäbelein CG, Feng Q, Sarajlic E, Zambelli T, Guillaume-Gentil O, Kornmann B, Vorholt JA. Mitochondria transplantation between living cells. *PLOS Biology* (2022) **20**:e3001576. doi: [10.1371/journal.pbio.3001576](https://doi.org/10.1371/journal.pbio.3001576)
- lxxviii Krolak T, Chan KY, Kaplan L, Huang Q, Wu J, Zheng Q, Kozareva V, Beddow T, Tobey IG, Pacouret S, et al. A high-efficiency AAV for endothelial cell transduction throughout the central nervous system. *Nat Cardiovasc Res* (2022) **1**:389–400. doi: [10.1038/s44161-022-00046-4](https://doi.org/10.1038/s44161-022-00046-4)
- lxxix Chi J-T, Chang HY, Haraldsen G, Jahnsen FL, Troyanskaya OG, Chang DS, Wang Z, Rockson SG, van de Rijn M, Botstein D, et al. Endothelial cell diversity revealed by global expression profiling. *Proceedings of the National Academy of Sciences* (2003) **100**:10623–10628. doi: [10.1073/pnas.1434429100](https://doi.org/10.1073/pnas.1434429100)
- lxxx van Buul JD, Hordijk PL. Signaling in Leukocyte Transendothelial Migration. *Arteriosclerosis, Thrombosis, and Vascular Biology* (2004) **24**:824–833. doi: [10.1161/01.ATV.0000122854.76267.5c](https://doi.org/10.1161/01.ATV.0000122854.76267.5c)
- lxxxi Caussinus E, Kanca O, Affolter M. Fluorescent fusion protein knockout mediated by anti-GFP nanobody. *Nature Structural & Molecular Biology* (2012) **19**:117–121. doi: [10.1038/nsmb.2180](https://doi.org/10.1038/nsmb.2180)
- lxxxii Horan KA, Hansen K, Jakobsen MR, Holm CK, Søby S, Unterholzner L, Thompson M, West JA, Iversen MB, Rasmussen SB, et al. Proteasomal degradation of herpes simplex virus capsids in macrophages releases DNA to the cytosol for recognition by DNA sensors. *J Immunol* (2013) **190**:2311–2319. doi: [10.4049/jimmunol.1202749](https://doi.org/10.4049/jimmunol.1202749)
- lxxxiii Acar M, Pando BF, Arnold FH, Elowitz MB, van Oudenaarden A. A general mechanism for network-dosage compensation in gene circuits. *Science* (2010) **329**:1656–1660. doi: [10.1126/science.1190544](https://doi.org/10.1126/science.1190544)
- lxxxiv Montezano, Augusto C., Karla B. Neves, Rheure A. M. Lopes, and Francisco Rios. "Isolation and Culture of Endothelial Cells from Large Vessels." In *Hypertension: Methods and Protocols*, edited by Rhian M. Touyz and Ernesto L. Schiffrin, 345–48. Methods in Molecular Biology. New York, NY: Springer, 2017. https://doi.org/10.1007/978-1-4939-6625-7_26.
- lxxxv Morrissey MA, Williamson AP, Steinbach AM, Roberts EW, Kern N, Headley MB, Vale RD. Chimeric antigen receptors that trigger phagocytosis. *eLife* (2018) **7**:e36688. doi: [10.7554/eLife.36688](https://doi.org/10.7554/eLife.36688)
- lxxxvi Friedland AE, Lu TK, Wang X, Shi D, Church G, Collins JJ. Synthetic Gene Networks that Count. *Science* (2009) **324**:1199–1202. doi: [10.1126/science.1172005](https://doi.org/10.1126/science.1172005)
- lxxxvii Park JS, Rhau B, Hermann A, McNally KA, Zhou C, Gong D, Weiner OD, Conklin BR, Onuffer J, Lim WA. Synthetic control of mammalian-cell motility by engineering chemotaxis to an orthogonal bioinert chemical signal. *Proc Natl Acad Sci USA* (2014) **111**:5896–5901. doi: [10.1073/pnas.1402087111](https://doi.org/10.1073/pnas.1402087111)

-
- ^{lxxxviii} Harimoto T, Hahn J, Chen Y-Y, et al. A programmable encapsulation system improves delivery of therapeutic bacteria in mice. *Nat Biotechnol* 2022;40(8):1259–1269; doi: [10.1038/s41587-022-01244-y](https://doi.org/10.1038/s41587-022-01244-y).
- ^{lxxxix} Lipinski DM, Reid CA, Boye SL, et al. Systemic Vascular Transduction by Capsid Mutant Adeno-Associated Virus After Intravenous Injection. *Hum Gene Ther* 2015;26(11):767–776; doi: [10.1089/hum.2015.097](https://doi.org/10.1089/hum.2015.097).
- ^{xc} Krolak T, Chan KY, Kaplan L, et al. A High-Efficiency AAV for Endothelial Cell Transduction throughout the Central Nervous System. *Nat Cardiovasc Res* 2022;1(4):389–400; doi: [10.1038/s44161-022-00046-4](https://doi.org/10.1038/s44161-022-00046-4).
- ^{xc i} Lu ZH, Kaliberov S, Zhang J, et al. The Myeloid-Binding Peptide Adenoviral Vector Enables Multi-Organ Vascular Endothelial Gene Targeting. *Lab Invest* 2014;94(8):881–892; doi: [10.1038/labinvest.2014.78](https://doi.org/10.1038/labinvest.2014.78).
- ^{xc ii} Okibe N, Suzuki N, Inui M, Yukawa H. Antisense-RNA-mediated plasmid copy number control in pCG1-family plasmids, pCGR2 and pCG1, in *Corynebacterium glutamicum*. *Microbiology* (2010) **156**:3609–3623. doi: [10.1099/mic.0.043745-0](https://doi.org/10.1099/mic.0.043745-0)
- ^{xc iii} Rider TH, Zook CE, Boettcher TL, Wick ST, Pancoast JS, Zusman BD. Broad-Spectrum Antiviral Therapeutics. *PLOS ONE* (2011) **6**:e22572. doi: [10.1371/journal.pone.0022572](https://doi.org/10.1371/journal.pone.0022572)
- ^{xc iv} Wang H, Wang R, Carrera I, et al. TFEB Overexpression in the P301S Model of Tauopathy Mitigates Increased PHF1 Levels and Lipofuscin Puncta and Rescues Memory Deficits. *eNeuro* 2016;3(2); doi: [10.1523/ENEURO.0042-16.2016](https://doi.org/10.1523/ENEURO.0042-16.2016).