

## Supplementary Information

Table S1. Estimated correlation coefficients for fixed effects on log-transformed anti-S1 IgM, BAU/mL.

Fixed effects	AIC = 1341.1 503 observations 88 subjects	
	$\beta$	<i>P</i> -value
BNT162b2 (reference)	(reference)	
mRNA-1273	0.057	0.7132
Week 0 (reference)	(reference)	
Week 1	0.718	0.0015
Week 2	3.263	<.0001
Week 3	3.509	<.0001
Week 4	4.436	<.0001
Week 5	4.237	<.0001
Week 6	3.909	<.0001
Week 7	3.878	<.0001
Week 8	3.670	<.0001
Week 11	2.819	<.0001
Week 15	2.027	<.0001
Week 16	1.985	<.0001
Age (per year old)	-0.011	0.0201
Female sex	-0.281	0.0525
Body height (per cm)	-0.020	0.0137
Smoking status	0.202	0.2574
Ethanol intake (per category)	-0.034	0.6635
Exercise habit (per category)	-0.053	0.1866
Perceived stress (per category)	0.009	0.782
Steroid use	-0.766	0.0126
Allergic disease	0.030	0.7448
Dyslipidemia	-1.511	<.0001
<i>ALDH2</i> (per variant allele)	-0.006	0.9275
$\beta$ , Partial correlation coefficient		

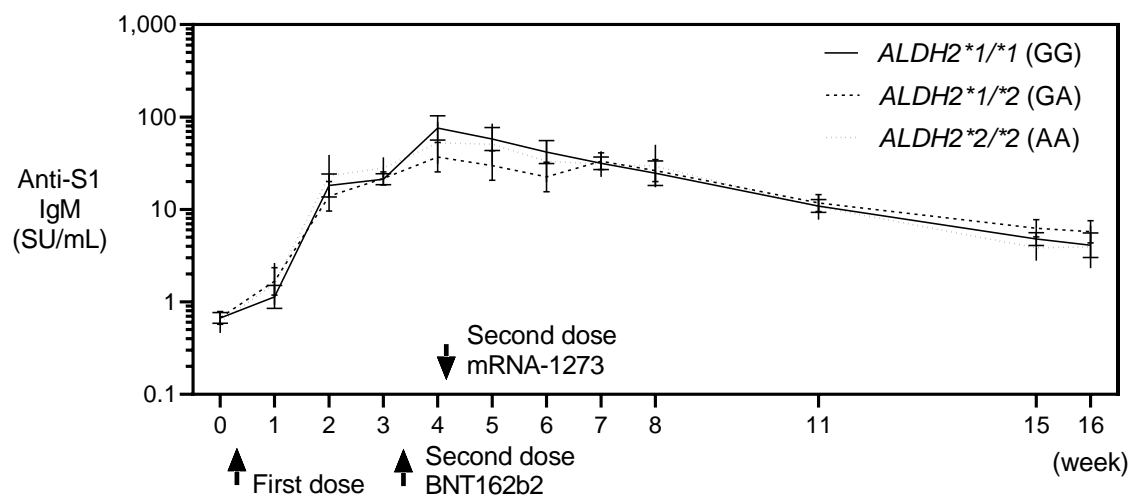


Figure S1. Estimated anti-S1 IgM antibody levels by *ALDH2* rs671 genotype.

Least-squares geometric means and standard errors were computed as shown in Figure 1.