

## Article

# Temporal and Spatial Analysis of Coastal Water Quality to Support Application of Witheleg Shrimp, *Litopenaeus vannamei* Intensive Pond Technology

Akhmad Mustafa <sup>1,\*</sup>, Mudian Paena <sup>1</sup>, Admi Athirah <sup>1</sup>, Erna Ratnawati <sup>1</sup>, Ruzkiah Asaf <sup>1</sup>, Hidayat Suryanto Suwoyo <sup>1</sup>, Sahabuddin <sup>1</sup>, Erfan Andi Hendrajat <sup>1</sup>, Kamaruddin <sup>1</sup>, Early Septiningsih <sup>1</sup>, Andi Sahrijanna <sup>1</sup>, Ismail Marzuki <sup>2</sup>, and Khairun Nisaa <sup>3</sup>

<sup>1</sup> Research Institute for Coastal Aquaculture and Fisheries Extension, Maros 90512, South Sulawesi, Indonesia; [akhmadmustafa@yahoo.com](mailto:akhmadmustafa@yahoo.com) (A.M.); [mudianpaena@yahoo.co.id](mailto:mudianpaena@yahoo.co.id) (M.P.); [m.athirah@gmail.com](mailto:m.athirah@gmail.com) (A.A.); [ernaratnawati60@yahoo.co.id](mailto:ernaratnawati60@yahoo.co.id) (E.R.); [qiaasaf@gmail.com](mailto:qiaasaf@gmail.com) (R.A.); [hidayat7676@gmail.com](mailto:hidayat7676@gmail.com) (H.S.); [s.abud\\_din@yahoo.com](mailto:s.abud_din@yahoo.com) (S.S.); [erfanhendrajat67@gmail.com](mailto:erfanhendrajat67@gmail.com) (E.H.); [dgbilla@yahoo.com](mailto:dgbilla@yahoo.com) (K.K.); [earlyseptiningsih@gmail.com](mailto:earlyseptiningsih@gmail.com) (E.S.); [idsarsompa@gmail.com](mailto:idsarsompa@gmail.com) (A.S.)

<sup>2</sup> Department of Chemical Engineering, Fajar University, Makassar 90231, South Sulawesi, Indonesia; [is-mailmz@unifa.ac.id](mailto:is-mailmz@unifa.ac.id) (I.M.)

<sup>3</sup> Fishery Faculty, Cokroaminoto University of Makassar, Makassar 90245, South Sulawesi, Indonesia; [nisaucha27@gmail.com](mailto:nisaucha27@gmail.com) (K.N.)

\* Correspondence: [akhmadmustafa@yahoo.com](mailto:akhmadmustafa@yahoo.com) (A.M.)

**Abstract:** Bulukumba Regency, South Sulawesi, Indonesia is one of the centres for whiteleg shrimp, *Litopenaeus vannamei* production that applies intensive technology. However, no information has been obtained regarding the characteristics and status of water quality in coastal areas with environmentally friendly concepts and the potential to receive a waste load. The study aimed to determine the performance of whiteleg shrimp culture in relation to temporal and spatial aspects and characteristic and water quality status. Measurement and sampling of water were carried out before stocking/initial of culture whiteleg shrimp (rainy season) and end of culture/after harvesting of whiteleg shrimp (dry season) at two locations in the coastal area of Bulukumba Regency, namely Bonto Bahari Subdistrict (BB) and Gantarang Subdistrict (GT). Variables measured and analyzed included temperature, salinity, pH, dissolved oxygen, nitrate, nitrite, ammonia, phosphate, total suspended solids, and total organic matter. Data analysis with descriptive statistics, multivariate statistics, and non-parametric statistics. The Storet (Storage and Retrieval) method was used to determine the water quality status. The results showed that the culture of whiteleg shrimp was technology-intensive with a stocking density of 110 - 220 ind/m<sup>2</sup> with productivity between 13.9 - 44.4 tons/ha/cycle. The predicted waste load of N is 28.00 tons/cycle and P reaches 6.61 tons/cycle. Another result was that changes in water quality status during the rainy season were classified as moderately polluted at the BB location and complying quality standards at the GT location, while in the dry season, both locations were categorized as heavily polluted. Variables of water quality that caused the decrease in water quality status in both locations (BB and GT) were observed to increase salinity, nitrate concentration, and ammonia concentration. However, there was a decrease in dissolved oxygen concentration in the dry season.

**Keywords:** Characteristics; water quality; coastal areas; intensive technology; *Litopenaeus vannamei*

## 1. Introduction

Coastal areas, seas, and small islands have strategic significance in building the nation and the welfare of the people in Indonesia, which is an archipelagic country. This is due to the enormous wealth of natural resources, both biological and non-biological

resources. The coastal area is dynamic, unique, and vulnerable to environmental changes [1-3]. Various kinds of human activities carried out both on land and at sea encourage environmental changes in coastal areas [4-7].

Commodities that are the mainstay for culture in ponds include shrimp, both tiger shrimp (*Penaeus monodon*) and whiteleg shrimp (*Litopenaeus vannamei*). Whiteleg shrimp is still strategic support for achieving the national shrimp production target. Whiteleg shrimp culture technology in ponds consists of traditional, traditional plus, semi-intensive, intensive, and super-intensive [8-10].

Intensification of whiteleg shrimp culture uses more efficient land and higher productivity [8,9,11-13] and reduces land use costs by more than 90%/kg shrimp [11]. Higher culture technology results in higher production and more efficient energy use, namely energy costs that are 74 - 89% lower than lower culture technology operations [14]. Efforts to produce more shrimp in shrimp culture with intensive technology, pond farmers can increase production to meet the needs of shrimp demand without putting pressure and burden on the contribution of waste to natural resources [12,15]. On the other hand, the intensification of whiteleg shrimp culture ponds can negatively impact polluting waste in the aquatic environment in coastal areas [8,11,16-18]. Waste from whiteleg shrimp ponds can come from shrimp feed and faeces. Less optimal use of feed or excessive feeding will lead to the accumulation of organic matter [13,19-21]. Waste load on whiteleg shrimp culture with a stocking density of 500 ind/m<sup>2</sup> in a 1,000 m<sup>2</sup> pond, each total nitrogen (N) reaches  $\pm 50.12$  g/kg shrimp, the total phosphorus (P) reaches  $\pm 15.73$  g/kg shrimp, and the organic components in the form of carbon (C) =  $\pm 126.85$  g/kg shrimp [10]. Feeds from intensive technology have been reported to be a significant source of waste in aquaculture systems [22,23]. The results of previous studies have revealed that most of the input of N and P into shrimp ponds as feed is not converted into shrimp biomass but is wasted into the environment [9,10,18,24,25]. High concentrations of nutrient waste discharged from shrimp ponds can cause eutrophication in coastal areas receiving waste [9,10,16]. Whiteleg shrimp faeces contain dry matter, crude protein, total amino acids [26], dissolved organic matter, and particulate organic matter [27,28] which can also become waste in coastal areas.

In addition to whiteleg shrimp culture waste, which can affect water quality in coastal areas, seasons can also influence water quality characteristics. Different seasons can impact different water quality characteristics [11,29,30]. Seasonal conditions can affect the amount of pollutant input in water [25,31-38], including coastal areas. It also impacts changes in water quality characteristics and water quality status [35,39]. Water quality is a term that describes the suitability or suitability of water for a particular use or for sustaining various uses or processes [40-42]. One indicator of water quality degradation in coastal areas can be seen from changes in water quality variables. Water quality status is the condition of water quality that shows that it is polluted or unpolluted in a water source within a particular time. This water quality indicator is based on the water quality standard stipulated in the Decree of the State Minister of the Environment Number 115 of 2003 concerning Guidelines for Determining Water Quality Status [5,43].

Water quality characteristics are essential to determine water quality status for various land uses [35,44-46], including aquaculture. Determination of water quality status is one of the first steps in monitoring and preventing water quality degradation in waters [47-49]. This determination will support sustainable development goals (SDGs), mainly target 14.1, which is to prevent and significantly reduce all types of pollution of marine and coastal areas, particularly from land-based activities, including marine debris and nutrient pollution. The target set by the United Nations is expected to be realized in 2025.

Bulukumba Regency, South Sulawesi Province, Indonesia, is one of the centres for whiteleg shrimp. Ponds in Bulukumba Regency cover an area of  $\pm 3,875$  ha consisting of  $\pm 2,903$  ha of traditional technology,  $\pm 697$  ha of semi-intensive technology, and  $\pm 275$  ha of intensive technology. Intensive technology whiteleg shrimp culture ponds in Bulukumba Regency are found in three subdistricts: Bonto Bahari, Ujung Bulu, and Gantarang, but

are dominantly found in Bonto Bahari (BB) and Gantarang (GT) Subdistricts with different land characteristics, including the coastal areas. Bulukumba Regency ranks third in South Sulawesi for whiteleg shrimp production, which is  $\pm 2,241$  tons in 2015 [50].

Two methods commonly used in determining the water quality status in Indonesia are the Storage and Retrieval (Storet) method and the Pollution Index (IP) [43]. These two methods have been widely applied in determining water quality status due to activities that can generate waste but have not been used in intensive technology whiteleg shrimp farming activities. Previous research in the coastal area of Lampung Bay, Lampung Province, Indonesia [51] and other coastal areas, such as in Bangkalan Regency, East Java Province, Indonesia [52], concluded that the Storet method is more accurate, logical, and effective than the IP method in determining water quality status [51,52]. Determining the status of water quality based on water quality characteristics will provide initial information about water quality in coastal areas receiving intensive shrimp culture waste for the sustainability of the functions of the coastal areas of the sea. In the Flores Sea, the Taka Bonerate National Park was designated a UNESCO Biosphere Reserve in 2015 [56-58]. Taka Bonerate National Park, which is located in the Selayar Islands Regency, South Sulawesi Province, has an area of 530,765 ha which has an atoll area of 220,000 ha which is the largest atoll or coral reef in Indonesia and Southeast Asia and the third largest in the world after Kwajalein Atoll (Marshall Islands) and Suvadiva Atoll (Maldivian Islands) [53]. In areas where there are very dense activities around the atoll, negative impacts can be received by pollution, nutrient enrichment, changes in construction in the field (dredging for boat access, filling for housing construction, sand mining and others), and exploitation of enormous resources [56-58]. This condition emphasizes the importance of information on the characteristics and status of water quality both temporally (different seasons) and spatially (different places) so that shrimp production in ponds and the condition of coastal ecosystems can be improved and sustainable [5,59].

The research we conducted aimed to determine the performance of whiteleg shrimp culture concerning water quality characteristics, and the water quality status in the coastal areas of aquaculture ponds at different times and places in the coastal area of Bulukumba Regency, especially in two locations, namely BB and GT [5,43,59,60]. This study pays excellent attention to the development of whiteleg shrimp aquaculture in coastal areas widespread in Indonesia. The model applies intensive technology based on natural regulation and control of water characteristics, quality and spatial, and efforts to reduce the burden of waste on the coastal environment. It is hoped that the quality of the aquatic environment will remain under control to create sustainable shrimp farming with an environmentally friendly concept by relying on natural conditions. The results of this study are expected to contribute important information for environmental protection and management of coastal areas so that the environment remains of sustainable quality.

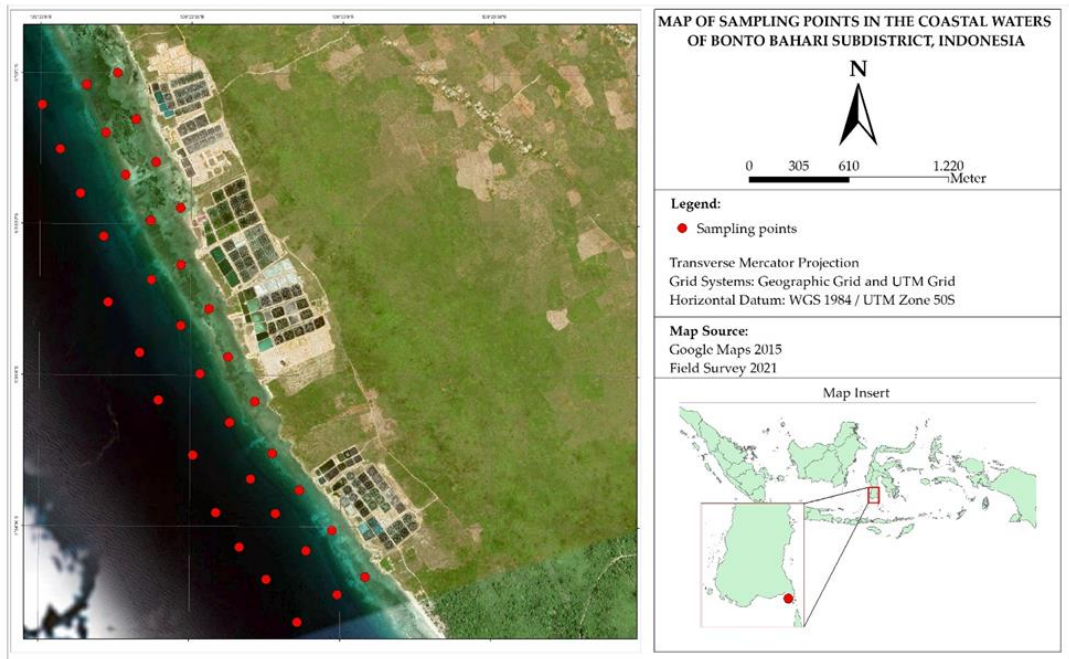
## 2. Materials and Methods

### 2.1. Research Location and Time

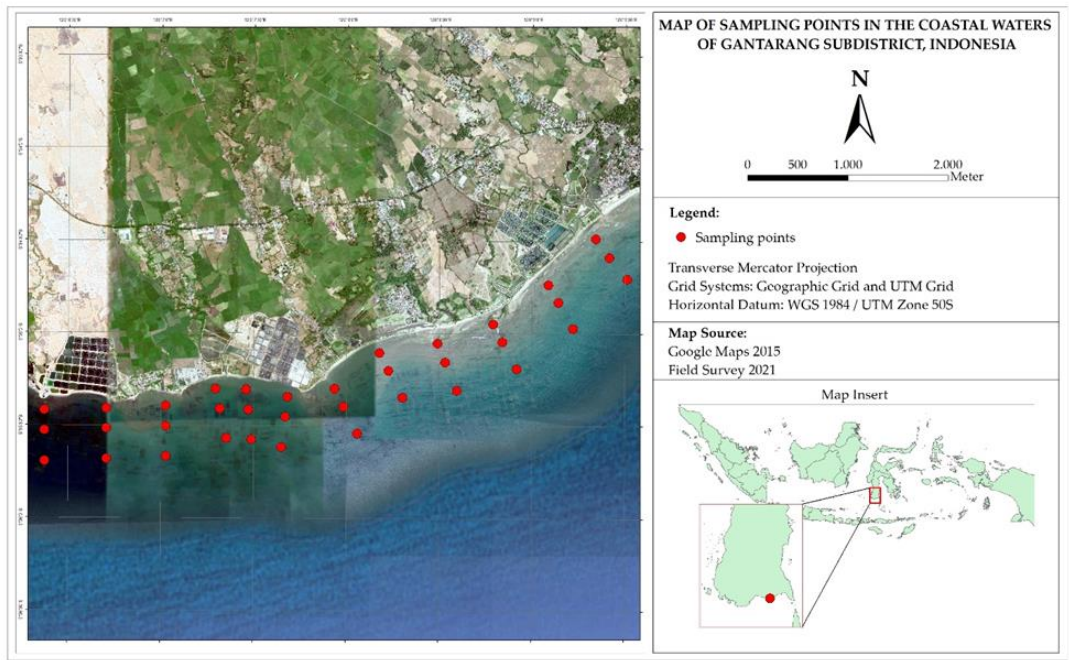
The method used in this research is a survey method. The survey was carried out in May 2021 (before stocking/initial of culture of whiteleg shrimp coincides with the rainy season) until September 2021 (end of culture/after harvesting of whiteleg shrimp coincides with the dry season) which was carried out in the coastal areas of Bonto Bahari (BB) and Gantarang (GT) Subdistricts. Whiteleg shrimp culture by applying intensive technology. A total of 12 transects perpendicular to the shoreline and 3 transects parallel to the shoreline, or 36 points of water sampling stations were determined in the field for BB (Fig. 1) and GT (Fig. 2). The distance between transects parallel to the shoreline is about 125 m, 350 m, and 675 m from the shoreline and the distance between transects perpendicular to the shoreline is about 375 m in the BB and about 600 m at the GT. The transect is located in a coastal area where intensive technology whiteleg shrimp ponds are



located on the mainland. The position of the station points is known by using the Global Positioning System (GPS).



**Figure 1.** Station sampling and measuring water quality in the coastal area of whiteleg shrimp, *Litopenaeus vannamei* culture in Bonto Bahari (BB) Subdistrict, Bulukumba Regency, South Sulawesi Province, Indonesia (Courtesy of La Ode Muhamad Hafizt Akbar, RICAFE)



**Figure 2.** Station sampling and measuring water quality in the coastal area of whiteleg shrimp, *Litopenaeus vannamei* culture in Gantarang (GT) Subdistrict, Bulukumba Regency, South Sulawesi Province, Indonesia (Courtesy of La Ode Muhamad Hafizt Akbar, RICAFE)

## 2.2. Data Collection

The data was collected in the form of primary data and secondary data. Primary data collection during the first survey was carried out in the rainy season and primary data collection during the second survey was carried out in the dry season. Water quality variables that are measured and analyzed are following Ministry of Environment (ME) Guidelines No. 51 of 2004, concerning Seawater Quality Standards for Marine Biota [61] and Minister of Marine Affairs and Fisheries (MMAF) Regulation No. 75/Permen-KP/2016 concerning General Guidelines for Grow-out of Tiger Shrimp (*Penaeus monodon*) and Whiteleg Shrimp (*Litopenaeus vannamei*) [62]. Water quality variables measured directly in the field were temperature, salinity, pH, and dissolved oxygen with YSI Pro Plus, which was carried out between 08:30 and 12:00 Central Indonesia Time. Another variable is taking water samples using the Kemmerer Water Sampler, which is composited based on depth, namely the surface and bottom of the waters. The water samples were preserved following the instructions APHA-AWWA-WEF (2012) [63]. The water sample is then brought to the laboratory for analysis. Other primary data in whiteleg shrimp culture management were obtained through interviews with whiteleg shrimp culture managers and structured observations in ponds using a questionnaire.

Secondary data from monthly rainfall data from the last five years (2016-2020) in BB and GT Subdistricts was obtained from the Maros Class I Climatology Station in Maros Regency, South Sulawesi Province. Rainfall data at the BB location comes from the station located in Bonto Bahari, while the rainfall data at the GT location comes from the station in Bonto Macinna.

## 2.3. Sample Analysis

Analysis of water quality variables consisting of ammonia, nitrate, nitrite, phosphate, total suspended solids, and total organic matter was carried out at the Water Laboratory of the Research Institute for Coastal Aquaculture and Fisheries Extension (RICAFE) in Maros Regency, South Sulawesi Province. Ammonia was analyzed by the phenate method. Nitrate was analyzed by the sodium reduction method. Nitrite was analyzed by the colourimetric method. Phosphate was analyzed by the ascorbic acid method. Total suspended solid were analyzed by the gravimetric method. Total organic matter was analyzed by the titrimetric method following the guidelines of APHA-AWWA-WEF (2012) [63].

## 2.4. Data Analysis

Estimates of the effluent load from intensive technology whiteleg shrimp ponds were determined based on the guidelines of Teichert-Coddington *et al.* (1991) [64]. Rainfall data were analyzed to determine the number of dry months (rainfall < 60 mm/month) according to the instructions of Schmidt & Ferguson (1951) [65]. The same rainfall data was also used to determine the Q value as the basis for determining climate type, following the instructions for determining the climate classification according to Schmidt & Ferguson (1951) [65]. These rainfall data analysis results are also used to determine the time of measurement and sampling of water in the field.

Nonparametric statistics, namely the Mann-Whitney Test were used to determine the difference between each water quality variable at different times and places. Before the nonparametric statistical test, the data normality test was performed using the Shapiro-Wilk Test [66]. The significance level is set at the level of 5% and 10% or  $p < 0.10$ . Pearson correlation was used to measure the strength and direction of the linear relationship of two water quality variables. The data obtained were also analyzed with multivariate statistics, namely Principal Component Analysis (PCA). Water quality variables maintained in the PCA are based on the criteria that each maintained variable

has an Eigenvalue less than 1.0 [67]. The validity of the PCA results was evaluated by the Kaiser–Meyer–Olkin (KMO) Test and the Bartlett Test. High values close to 1.0 in the KMO Test and small values ( $< 0.05$  of the significance level) in the Bartlett Test indicate that PCA can be applied to water quality data [68–70]. The Mann-Whitney Test and the Shapiro-Wilk Test were carried out with the help of the International Business Machines (IBM) Statistical Package for the Social Sciences (SPSS) program, Statistics Version 25 and PCA were carried out with the help of XLSTAT 2021.4 Trial version [70].

Data analysis with descriptive statistics was carried out to determine the minimum, maximum, average, and standard deviation values of the data for each water quality variable. The results of the analysis were evaluated by comparing the quality standards of seawater standards based on the ME Decree concerning Seawater Quality Standards for Marine Biota [61] and the MMAF Regulations concerning General Guidelines for Grow-out Tiger Shrimp (*Penaeus monodon*) and Whiteleg Shrimp (*Litopenaeus vannamei*) [62]. Water quality status was determined using the Storet method developed by The United States Environmental Protection Agency (US-EPA) (2002) [43]. Score determination is based on the number of samples and physical and chemical variables. Water quality status is classified into four classes, namely: (1) class A: very good, score = 0: complying quality standards; (2) class B: good, score = -1 to -10: lightly polluted; (3) class C: moderate, score = -11 to -30: moderately polluted; and (4) class D: poor, score  $< -31$ : heavily polluted [71]. The water quality status is compared between different times and places.

### 3. Results

#### 3.1. Whiteleg Shrimp Culture Performance

Intensive technology whiteleg shrimp culture in ponds of Bulukumba Regency is mostly carried out in two subdistricts, namely: BB and GT. In BB, there are 5 intensive technology whiteleg shrimp farming business, but only 3 of them were operational at the time of the research (Table 1). All ponds are constructed with High-Density Polyethylene (HDPE). The ponds area varies from 1,600 m<sup>2</sup> to 4,000 m<sup>2</sup> with a total of 78 ponds. The stocking density varied from 110 ind/m<sup>2</sup> to 150 ind/m<sup>2</sup> in BB, according to the level of technology applied, namely intensive technology. In GT, there are 3 intensive technology whiteleg shrimp farming businesses. Like the ponds in BB, the intensive technology whiteleg shrimp ponds in GT are also constructed with HDPE. The area of the ponds is relatively the same as in the BB, which is from 1,900 m<sup>2</sup> to 4,500 m<sup>2</sup>. According to the technology applied, namely intensive technology whiteleg shrimp culture, the stocking density applied ranges from 100 ind/m<sup>2</sup> to 220 ind/m<sup>2</sup> in GT. Pond productivity can reach 44.4 tons/ha/cycle in BB and 30.0 tons/ha/cycle in GT. The feed conversion ratio (FCR) ranged between 1.2:1 and 1.7:1.

**Table 1.** Performance of intensive technology whiteleg shrimp aquaculture ponds

Variable	BB Location	GT Location
Pond construction	HDPE	HDPE
Total land area (ha)	20.00-40.00	3.50-45.00
Reservoir area (ha)	0.29-2.00	0.50
WWTP area (ha)	0.15-1.50	0.35-1.00
Number of ponds (unit)	19-34	7-48
Pond area (m <sup>2</sup> )	1,600-4,000	1,900-5,000
Total pond area (ha)	4.39-12.24	2.60-17.28
WWTP pond volume to total pond (%)	3.42-15.82	5.21-13.46
Stocking density (ind/m <sup>2</sup> )	110-150	100-220
Productivity (ton/ha/cycle)	17.5-44.4	13.9-30.0

Feed conversion ratio	1.2:1-1.7:1	1.4:1
-----------------------	-------------	-------

Based on the data obtained from each intensive technology whiteleg shrimp farming business in Bulukumba Regency, the production potential of whiteleg shrimp can be determined in the data (Table 2). Potential production can reach 1,615 tons/year (1 year = 2 cycles) on a total pond area of ± 37.00 ha in BB and ± 1,578 tons/year (1 year = 2 cycles) on a total pond area of ± 32.60 ha in GT. It is estimated that the total N waste load reaches ± 28.33 tons/year and P reaches ± 6.69 tons/year, which is wasted into the coastal area of the culture location in BB and ± 27.68 tons/year N and ± 6.53 tons/year P is wasted into the coastal area of GT.

**Table 2.** Production potential and estimated effluent load from intensive technology whiteleg shrimp aquaculture ponds

Subdistrict	Intensive Pond Area (ha)	Number of Ponds (unit)	Total area of ponds (ha)	Production Potential (ton/year)	Estimated Feed (ton/year)	Estimated Waste Load	
						ton N/ year	ton P/ year
BB	37.00	78	26.11	1,615	2,351	28.33	6.69
GT	32.60	90	34.55	1,578	2,209	27.68	6.53
Total	69.60	168	60.66	3,193	4,560	56.01	13.22

Each whiteleg shrimp pond in Bulukumba Regency has a Wastewater Treatment Plant (WWTP) pond with an area ranging from ± 0.15 ha to ± 1.50 ha. The calculation results show that the WWTP pond area only ranges from 3.42% to 15.84% of the total pond area or also ranges from 3.42% to 15.84% of the total pond volume because, in general, the water level is high in the grow-out pond is relatively the same as the water level in the WWTP pond.

3.2. Water Quality Characteristics

Water quality is a measure of the condition of water in terms of its physical, chemical, and biological characteristics. Water quality for aquaculture also shows a measure of water conditions relative to the needs of biota. Water quality is often a standard measure of the health condition of aquatic ecosystems [46,72,74]. The water quality in the coastal areas of BB and GT locations, both in the rainy and dry seasons, is shown in the data (Tables 3 and 4), respectively. The difference in water quality between the coastal areas of the BB and GT locations in the rainy and rainy seasons is presented in the data (Tables 5 and 6), respectively.

In general, the temperature of sea waters in Indonesia has a fairly wide range. Characteristics of different temperatures can be caused by topography or water depth associated with differences in sunlight penetration. The water temperature for marine biota and intensive technology whiteleg shrimp culture ranges from 28 - 30°C [61,62]. The water temperature in the coastal area of BB is 28,59 ± 0,18°C in the rainy season and 28,14 ± 0,22°C in the dry season. The results of statistical analysis showed that the water temperature was significantly different ( $p < 0.01$ ) between the rainy and dry seasons with lower water temperatures in the dry season in BB (Table 3). The water temperature in the coastal area of GT in the rainy season is on average 28.84°C, and in the dry season, the average is 28.43°C. As a comparison, the results of the statistical analysis also showed that the water temperature was very significantly different ( $p < 0.01$ ) between the rainy and dry seasons, with the water temperature also being lower in the dry season in GT (Table 4). The same result, water temperature in coastal areas, is higher in the rainy season (June-September) than the dry season (December-March) in Bangkok and Samut Prakam, Thailand [29]. Other data, in the west season or rainy season in the waters of Manado Bay, North Sulawesi Province, Indonesia is characterized by a powerful west wind



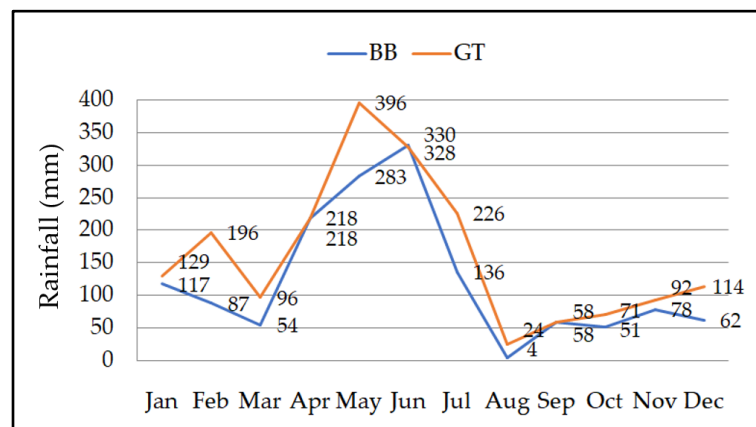
accompanied by waves and currents causing the penetration of sunlight to the sea surface is not effective so that the water temperature is low [74].

**Table 3.** Descriptive statistics and significance of water quality in coastal areas of intensive technology whiteleg shrimp aquaculture ponds in Bonto Bahari (BB) Subdistrict

Variable	Mean±SD		Sig.
	Before stock- ing/initial of culture (Rainy season)	End of cul- ture/after har- vesting (Dry sea- son)	
Temperature (°C)	28.59±0.18	28.14±0.22	0.000**
Salinity (ppt)	33.870±0.068	38.493±0.616	0.000**
pH	8.504±0.116	8.086±0.051	0.000**
Dissolved oxygen (mg/L)	8.209±0.541	5.214±0.696	0.000**
Ammonia (mg/L)	0.08504±0.02068	0.13616±0.02979	0.000**
Nitrate (mg/L)	0.0001±0.0000	0.13966±0.05206	0.000**
Nitrite (mg/L)	0.02006±0.01972	0.00020±0.00029	0.000**
Phosphate (mg/L)	0.06622±0.01945	0.03586±0.04285	0.002**
Total suspended solids (mg/L)	22.6±15.7	9.3±3.0	0.000**
Total organic matter (mg/L)	67.126±9.663	31.257±15.797	0.000**

\*\* : Significantly different

Water salinity describes the total solids in the water after all the carbonates have been converted to oxides. Chlorides have replaced all the bromides and iodides, and all organic matter has been oxidized. The good salinity of source water for intensive technology whiteleg shrimp culture ranges between 26 and 32 ppt [62]. Good water salinity for marine biota ranges between 33 and 34 ppt [61]. The average water salinity in the coastal areas of BB is 33.870 ppt in the rainy season and an average of 38.493 ppt in the dry season. The results of statistical analysis showed that the water salinity was very significantly different ( $p < 0.01$ ) between the rainy and dry seasons with higher water salinity in the dry season in BB (Table 3). Water salinity in the coastal area of GT in the rainy season is around an average of 33.566 ppt and an average of 36.404 ppt in the dry season. The results of the statistical analysis also showed that the water salinity was very significantly different ( $p < 0.01$ ) between the rainy and dry seasons with higher water salinity in the dry season in GT (Table 4). One of the causes of differences in salinity in different seasons is the difference in rainfall. Monthly rainfall in BB and GT is presented in Figure 3.





**Figure 3.** Fluctuations in average monthly rainfall in the coastal areas of Bulukumba Regency in the last five years, 2016 - 2020

The water quality variable used to determine the condition of acidic or alkaline waters is the water pH. The water pH in the coastal areas of the two subdistricts can be used as a source of water for shrimp farming because the pH of good source water for intensive technology whiteleg shrimp culture is 7.5 - 8.5 [62]. Suitable water pH for marine biota ranges between 7.0 and 8.5 [61]. The pH of water in the coastal areas of BB and GT was higher and significantly different ( $p < 0.05$ ) in the rainy season compared to the dry season (Tables 3 and 4). Comparative data in the coastal area of Ujung Loe Subdistrict, one of the subdistricts located between the two locations (BB and GT), Bulukumba Regency, found that the pH of the water ranged from 7.17 - 8.80, measured in January [75].

**Table 4.** Descriptive statistics and significance of water quality in coastal areas of intensive technology whiteleg shrimp aquaculture ponds in Gantarang (GT) Subdistrict

Variable	Mean±SD		Sig.
	Before stock-ing/initial of cul-ture (Rainy season)	End of culture/after harvesting (Dry season)	
Temperature (°C)	28.84±0.31	28.43±0.32	0.009**
Salinity (ppt)	33.566±0.200	36.404±0.571	0.000**
pH	8.393±0.094	8.320±0.033	0.015*
Dissolved oxygen (mg/L)	7.089±0.673	5.827±0.648	0.000**
Ammonia (mg/L)	0.09722±0.02679	0.14769±0.06667	0.052 <sup>ns</sup>
Nitrate (mg/L)	0.00031±0.00063	0.27675±0.12965	0.000**
Nitrite (mg/L)	0.02782±0.01272	0.00348±0.00785	0.000**
Phosphate (mg/L)	0.09993±0.10077	0.09167±0.06966	0.902 <sup>ns</sup>
Total suspended solids (mg/L)	30.6±8.1	20.5±8.0	0.009**
Total organic matter (mg/L)	66.295±7.743	36.751±12.948	0.000**

\* : Significantly different

\*\* : Very significantly different

ns : Not significant

The pH value of water is positively correlated with dissolved oxygen concentration [76,77]. This pH can also be seen in this study which shows that at low pH, water also shows low dissolved oxygen concentrations (Tables 3 and 4) and is confirmed by the results of the Pearson correlation ( $r = 0.475$ ;  $p < 0.01$ ) (Table 7). The close relationship between water pH and dissolved oxygen is also seen in Figures 4 and 5, with the formation of an acute angle ( $< 90^\circ$ ) between the pH and dissolved oxygen lines. Dissolved oxygen is one of the most critical environmental variables directly affecting production and growth through metabolism and environmental conditions. Dissolved oxygen concentration in water can affect the growth, FCR, and carrying capacity of waters. Dissolved oxygen concentration in the rainy season was higher and significantly different ( $p < 0.01$ ) with dissolved oxygen in the dry season in the waters of BB and GT. The low concentration of dissolved oxygen in the dry season in both BB and GT coastal areas is thought to result from waste from intensive technology whiteleg shrimp ponds decomposed by microbes that use a lot of dissolved oxygen. Various processes decrease dissolved oxygen concentration when nutrients are high, including nitrate [16,74,78,79]. The dissolved oxygen concentration was lower in the dry season than in the rainy season in the coastal area of Lampung Bay, Lampung Province [51].

**Table 5.** Descriptive statistics and significance of water quality in coastal areas of intensive technology whiteleg shrimp ponds before stocking/initial of culture (rainy season)

Variable	Mean± SD		Sig.
	BB Location	GT Location	
Temperature (°C)	28.59±0.18	28.84±0.31	0.013*
Salinity (ppt)	33.870±0.068	33.566±0.200	0.000**
pH	8.504±0.116	8.393±0.094	0.020*
Dissolved oxygen (mg/L)	8.209±0.541	7.089±0.673	0.000**
Ammonia (mg/L)	0.08504±0.02068	0.09722±0.02679	0.203 <sup>ns</sup>
Nitrate (mg/L)	0.0001±0.0000	0.00031±0.00063	0.161 <sup>ns</sup>
Nitrite (mg/L)	0.02006±0.01972	0.02782±0.01272	0.295 <sup>ns</sup>
Phosphate (mg/L)	0.06622±0.01945	0.09993±0.10077	0.005**
Total suspended solids (mg/L)	22.6±15.7	30.6±8.1	0.168 <sup>ns</sup>
Total organic matter (mg/L)	67.126±9.663	66.295±7.743	0.825 <sup>ns</sup>

\* : Significantly different  
\*\* : Very significantly different  
ns : Not significant

Nutrients in the context of water quality are molecules in water that can be directly used by biota for cell growth [80,81]. Nutrients widely used by aquatic organisms, including seaweed, are ammonia, nitrate, nitrite, and phosphate [82,83]. In general, nitrate is the essential nutrient that determines the growth of plankton and higher plants in marine waters. The concentration of nitrate in the coastal areas of BB and GT in the dry season increased very drastically. It was very significantly different ( $p < 0.01$ ) with the concentration of nitrate in the rainy season (Tables 3 and 4). The average nitrate concentrations in the coastal areas of BB and GT are 0.00010 mg/L and 0.00031 mg/L respectively in the rainy season and increase to 0.13966 mg/L and 0.27675 mg/L respectively, in the dry season or an increase of more than 800 times.

**Table 6.** Descriptive statistics and significance of water quality in coastal areas of intensive technology whiteleg shrimp ponds at the end of culture/after harvesting (dry season)

Variable	Mean±SD		Sig.
	BB Location	GT Location	
Temperature (°C)	28.14±0.22	28.43±0.32	0.003**
Salinity (ppt)	38.493±0.616	36.404±0.571	0.000**
pH	8.086±0.051	8.320±0.033	0.000**
Disssolved oxygen (mg/L)	5.214±0.696	5.827±0.648	0.009**
Ammonia (mg/L)	0.13616±0.02979	0.14769±0.06667	0.506 <sup>ns</sup>
Nitrate (mg/L)	0.13966±0.05206	0.27675±0.12965	0.000**
Nitrite (mg/L)	0.00020±0.00029	0.00348±0.00785	0.085 <sup>ns</sup>
Phosphate (mg/L)	0.03586±0.04285	0.09167±0.06966	0.006**
Total suspended solids (mg/L)	9.3±3.0	20.5±8.0	0.000**
Total organic matter (mg/L)	31.257±15.797	36.751±12.948	0.254 <sup>ns</sup>

\*\* : Significantly different  
<sup>ns</sup> : Not significant

377  
378  
379

The complexity of water quality variables in intensive technology whiteleg shrimp ponds is known as an N compound other than nitrate. These compounds arise from the N cycle process, with some of the main ingredients being shrimp feed residues and shrimp faeces [84-86]. Tables 5 and 6 show that the ammonia concentration is higher in the dry season when compared to the rainy season in the coastal areas of BB and GT. The primary source of ammonia compounds in shrimp farming systems comes from supplementary feed and direct excretion of cultured aquatic organisms. The ammonia concentration in the pond system will be directly proportional to the amount of feed that enters [87].

**Table 7.** Pearson correlation between each water quality variable

Variable Variable	Temperature (°C)	Salinity (ppt)	pH	Dissolved oxygen (mg/L)	Ammonia (mg/L)	Nitrate (mg/L)	Nitrite (mg/L)	Phosphate (mg/L)	Total sus- pended solids (mg/L)	Total organic matter (mg/L)
Temperature (°C)	1	-0.437**	0.457**	0.165	-0.086	0.483**	0.050	0.170	0.278*	0.028
Salinity (ppt)	-0.437**	1	-0.789**	-0.476**	-0.133	-0.600**	-0.234*	-0.270*	-0.558**	-0.163
pH	0.457**	-0.789**	1	0.475**	0.053	0.525**	0.271*	0.311**	0.668**	0.124
Dissolved oxygen (mg/L)	0.165	-0.476**	0.475**	1	0.168	0.204	0.053	0.097	0.207	0.137
Ammonia (mg/L)	-0.086	-0.133	0.053	0.168	1	0.183	0.109	-0.027	0.026	-0.029
Nitrate mg/L)	0.483**	-0.600**	0.525**	0.204	0.183	1	0.119	0.218	0.512**	-0.052
Nitrite (mg/L)	0.050	-0.234*	0.271*	0.053	0.109	0.119	1	0.213	0.327**	0.041
Phosphate (mg/L)	0.170	-0.270*	0.311**	0.097	-0.027	0.218	0.213	1	0.174	0.132
Total sus- pended solids (mg/L)	0.278*	-0.558**	0.688**	0.207	0.026	0.512**	0.327**	0.174	1	0.136
Total organic matter (mg/L)	0.028	-0.163	0.124	0.137	-0.029	-0.052	0.041	0.132	0.136	1

\*\* : Correlation is significant at the 0.01 level

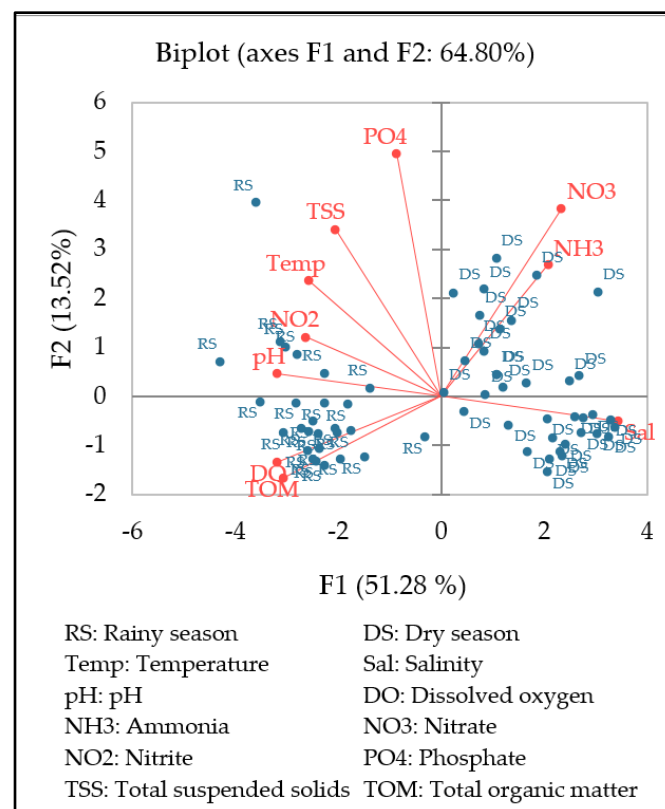
\* : Correlation is significant at the 0.05 level

Unlike the forms of N compounds, namely ammonia and nitrate, which increase in the dry season, another form of N, nitrite, occurs. On the contrary, the concentration decreases during the dry season in the coastal area of the Bulukumba Regency. Nitrite is usually found in tiny amounts because it is unstable in dissolved oxygen. This condition is found in the coastal area of Bulukumba Regency with low nitrite concentrations when nitrate and ammonia concentrations are high. Nitrite is an intermediate form between ammonia and nitrate (nitrification) and between nitrate and N gas (denitrification) [7,86,88]. The low concentration of nitrite in the coastal area of Bulukumba Regency can support it as a source of water for whiteleg shrimp culture. The recommended nitrite concentration for whiteleg shrimp culture is lower than 1 mg/L [62].

Generally, P is not toxic to humans, animals, and fish/shrimp. However, excessive P accompanied by the presence of N can stimulate the explosion of algae populations in the waters. The phosphate concentration found in the coastal area of BB was lower in the dry season and was very significantly different ( $p < 0.01$ ) from the rainy season. The same thing was also found in the coastal area of GT. Namely, the phosphate concentration was lower in the dry season compared to the rainy season, although not significantly different ( $p > 0.01$ ). The same study results were higher phosphate concentrations in the rainy season than in other seasons [51,74]. The low phosphate concentration in the coastal area of GT is thought to be utilized by seaweed cultured in the area. The area of seaweed, *Kappaphycus alvarezii* culture in the coastal area of Bulukumba Regency will reach 3,766 ha

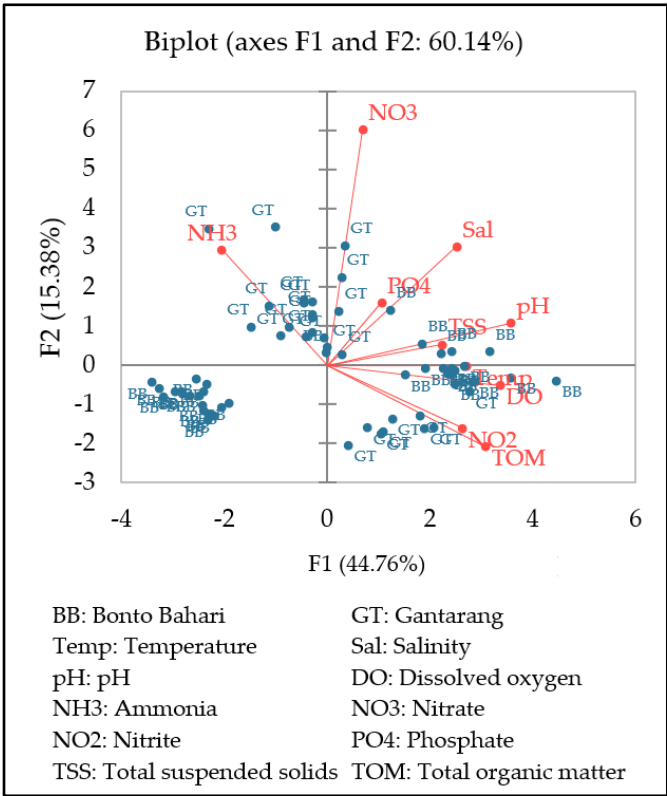
in 2020 [75]. It is known that besides N, other nutrients needed by seaweed are P. Phosphate is the P form that is absorbed by seaweed [89-91]. Elemental P is an essential material for higher plants and aquatic algae, so this element is a limiting factor for aquatic plants and algae and significantly affects aquatic productivity [92,93]. Seaweed requires P for growth because it is the main constituent of Ribonucleic acid (RNA) and consequently is involved in protein synthesis [94,95]. In addition, the term "overconsumption" in aquatic algae is also known, namely when the water contains sufficient P, the aquatic algae accumulate P in the cells exceeding their needs [94]. The excess P absorbed will be utilized when the waters lack P so that seaweed can still grow for some time during periods of P supply shortage. The average phosphate concentration is  $0.06622 \pm 0.01945$  mg/L in coastal areas of BB and  $0.09993 \pm 0.10077$  mg/L in the coastal area of the GT during the rainy season. An average of  $0.03586 \pm 0.04285$  mg/L in the coastal area of the BB and  $0.09167 \pm 0.06966$  mg/L in the coastal area of the GT during the dry season, when compared with the ideal concentration for seaweed growth habitat, which is 1.0 - 3.2 mg/L [96], this situation is still far from optimal. The phosphate concentration in the source and rearing water of good whiteleg shrimp ranged between 0.01 and 5.0 mg/L [62]. According to the data from Table 7, it can be seen that there is a very close and positive relationship between phosphate and water pH ( $r = 0.311$ ;  $p < 0.01$ ). The close relationship between pH and phosphate concentration is also seen in Figures 4 and 5.

Total suspended solids and total organic matter are variables that can be used as references in determining the level of pollution that occurs [16,97]. Total suspended solids and total organic matter decreased and was significantly different ( $p < 0.01$ ) in the dry season compared to the rainy season (Tables 3 and 4). Total suspended solids and total organic matter in the coastal area of BB is low, and the statistical analysis results show a very significant difference ( $p < 0.01$ ) with the concentration of total suspended solids and total organic matter in the coastal area of GT (Tables 5 and 6).



**Figure 4.** Biplots (F1 and F2) of the analysis of the main components of water quality variables that characterize the two seasons in the Bulukumba Regency





**Figure 5.** Biplots (F1 and F2) of the analysis of the main components of water quality variables that characterize two locations in Bulukumba Regency

3.3. Water Quality Status

Analysis of determining the status of water quality was using the Storet method. The result shows that the water quality in the coastal area of BB is categorized as Class C or moderate or moderately polluted in the rainy season with a total score of -16, and the status changes to Class D or poor or heavily polluted. The dry season had a total score of -44 (Table 8 and Fig. 6). The only variable that causes the water quality status to be classified as moderately polluted during the rainy season is the pH of the water, which exceeds 8.5. In the dry season, the water quality status becomes heavily polluted in the coastal areas of BB as a result of salinity exceeding 34 ppt, dissolved oxygen concentration lower than 5.0 mg/L, and nitrate concentration exceeding 0.008 mg/L.

**Table 8.** Status of water quality in the coastal area of Bonto Bahari Subdistrict (BB)

Measurement Time	Score on Level			Total Score	Water Quality Status
	Minimum	Maximum	Average		
Before stocking/ initial of culture (Rainy season)	0	-4	-12	-16	Class C or Moderate or Moderately Polluted
End of culture/ after harvesting (Dry season)	-12	-8	-24	-44	Class D or Poor or Heavily Polluted

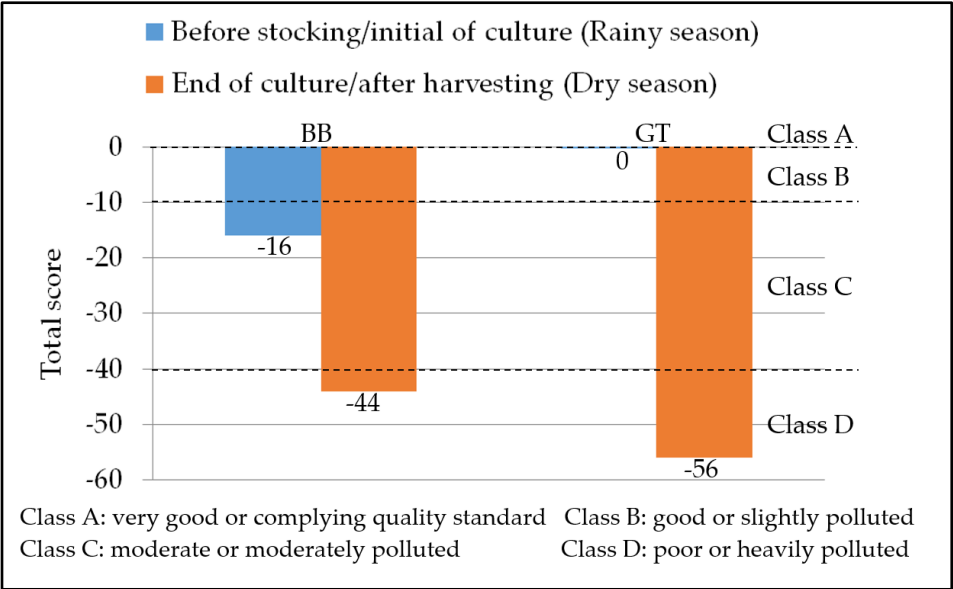
The water quality status in the coastal area of GT is classified as Class A or very good or complying quality standard with a total score of 0 in the rainy season and turns into heavily polluted with a total score of -56 in the dry season (Table 9 and Fig. 6). The variables that cause a decrease in water quality status in the coastal area of GT during the

dry season are salinity that exceeds 34 ppt, dissolved oxygen concentration lower than 5.0 mg/L, ammonia concentration that exceeds 0.3 mg/L, and nitrate concentration which exceeds 0.008 mg/L.

**Table 9.** Status of water quality in the coastal area of Gantarang Subdistrict (GT)

Measurement Time	Score on Level			Total Score	Water Quality Status
	Minimum	Maximum	Average		
Before stocking/ initial of culture (Rainy season)	0	0	0	0	Class A or Very good or Complying quality standard
End of culture/ after harvesting (Dry season)	-8	-12	-36	-56	Class D or Poor or Heavily polluted

The application of the same method, namely the Storet method, obtained a total score of -41, indicating the category of heavily polluted coastal areas between the two locations (BB and GT) precisely in Ujung Loe Subdistrict, Bulukumba Regency [75]. It was also said that the primary water quality variable that caused the waters in the coastal area of Ujung Loe Subdistrict, Bulukumba Regency, to be classified as heavily polluted due to low dissolved oxygen concentration and high nitrate concentration. This condition was also found in this study at BB and GT locations.



**Figure 6.** Status of water quality in the coastal area of Bulukumba Regency

Based on Fig. 7 above, by applying the Storet method and relatively the same water quality variables (temperature, salinity, pH, dissolved oxygen, ammonia, nitrate, nitrite, and phosphate), data were obtained at BB and GT locations. This condition is similar to the coastal area of shrimp farming in Bangkalan Regency, East Java Province. It is reported that water quality status is in the moderately polluted category (total score -23) and heavily polluted (total score -36), which is thought to be one of the causes of whiteleg shrimp pond waste without going through WWTP [52].

## 4. Discussion

### 4.1. *Whiteleg Shrimp Culture Performance*

The productivity of whiteleg shrimp ponds reaches 17.5 - 44.4 tons/ha/cycle at a stocking density of 110 - 150 ind/m<sup>2</sup> in BB and 13.9 - 30.0 tons/ha/cycle at a stocking density of 100 - 220 ind/m<sup>2</sup> in GT. At a stocking density of 133 ind/m<sup>2</sup> which is also classified as intensive technology, a production of 17.1 kg/ha/cycle can be obtained [98]. The high stocking density in intensive technology whiteleg shrimp culture, such as in Bulukumba Regency, has consequences on the waste load that can affect the feasibility of shrimp habitat and the aquatic environment in coastal areas around shrimp farming. Shrimp culture technology should not only focus on increasing productivity and product quality but should also be able to reduce negative social and environmental impacts [18,99]. Waste originating from intensive ponds consists of feed that is wasted during culture and feed that is not digested by shrimp that is wasted through feces and excretion of shrimp during rearing. Aquaculture business is a major contributor to the increase in waste and toxic compounds in the form of ammonia as the main nitrogen waste [18,46]. About 20 - 30% of the total N and P content in the feed will be wasted into the aquatic environment [100]. Nutrient waste load from whiteleg shrimp feed in ponds measuring 2,500 m<sup>2</sup> with a stocking density of 150 ind/m<sup>2</sup>, the total N was 13.84 g/kg shrimp and P reached 8.09 g/kg shrimp [101]. The amount of feed wasted into the environment from intensive/super-intensive whiteleg shrimp ponds was 24.32% of the total feed used [24]. It is estimated that about 572 tons/year of feed is wasted in the coastal environment of BB. About 537 tons/year is wasted in the environment in the coastal area of GT.

The WWTP pond in the BB pond have a different construction from the WWTP pond in GT. The WWTP pond dyke in BB is lined with HDPE or made of concrete, but the base of the pond is not constructed of concrete or is not lined with HDPE or lined with HDPE with holes, allowing pond effluent to infiltration into the ground. BB's intensive technology whiteleg shrimp pond soil is classified as Typic Hapludalfs soil subgroup and classified as Mediterranean or Alfisol soil great group. Mediterranean soils develop from limestone parent material with low organic matter concentrations, moderate to high base saturation, heavy texture with a lumpy soil structure, and soil reactions from slightly acidic to slightly alkaline [102,103]. Mediterranean soils have clay deposits on the horizon known as argillic horizons. Clay buried in the lower horizon comes from above, washed down with percolation water movements [103,104]. Thus, this relatively dense argillic horizon causes the percolation rate to be hampered. The soil is quickly saturated with water and is easily eroded [104-105]. It is suspected that the waste liquid from intensive technology whiteleg shrimp ponds with WWTP pond as applied in BB is eventually discharged into BB's coastal area through the water flow. Waste is wasted on the coast because the wastewater cannot penetrate the argillic horizon. However, a particular study is needed on the construction of the WWTP pond to see its ability as an efficient and effective intensive whiteleg shrimp WWTP pond in more detail.

### 4.2. *Water Quality Characteristics*

Water temperature is influenced by season, latitude, altitude above sea level, time of day, air circulation, cloud cover, and the flow and depth of water bodies [107]. A sudden change in the current pattern can also lower the water temperature [108]. The coastal area between BB and GT is located in the Flores Sea, the water temperature ranges from 28.7 to 32.5°C, measured in January [75]. The average sea surface temperature in Indonesian waters, including in the Flores Sea, is generally higher in the west season (rainy season) than in the east season (dry season) [109]. The research locations in BB and GT are in the Flores Sea, with lower water temperatures found in September measurements, namely in the dry season. The statistical analysis results between the water temperature in BB and

GT showed significantly different results ( $p < 0.05$ ), with the water temperature in BB being lower than in GT in the rainy and dry seasons. The lower water temperature in BB is made possible by the higher water depth in the coastal area of BB compared to GT. The depth of the waters in the coastal area of BB reaches about 20 m, while in the GT, it only reaches about 10 m. Seawater temperature is influenced by sea depth, wind speed, sunlight conditions, and the strength of the vertical temperature [110-112].

One factor influencing salinity distribution in the waters is the amount of freshwater that enters marine waters [72,113]. In shallower waters such as in the GT coastal area, freshwater intrusion can spread to the bottom of the water so that the water salinity becomes lower and is very significantly different ( $p < 0.01$ ) from salinity in the BB coastal area both during the rainy season (Table 5) and during the dry season (Table 6). Another cause is higher salinity in BB's coastal areas than GT due to lower rainfall (1,428 vs 1,936 mm/year) and deeper waters (20 vs 10 m). Based on the results of the climate analysis, it was obtained that the value of  $Q = 0.80$  or classified as climate type D or moderate climate in BB and the value of  $Q = 0.29$  or classified as climate type B or wet climate in GT. From another analysis, based on the number of dry months, it was found that there were four dry months in BB and two dry months in GT. The three analyses carried out on rainfall data show that BB is drier than GT, so it impacts high salinity in the coastal area of BB, as previously described. A significantly negative correlation was found between mean monthly salinity and monthly rainfall [114]. It has been reported that there is an increase in salinity in the waters around the BB and GT coasts, namely the southern region of Sulawesi, including the Flores Sea, during the dry season as a result of water masses from the Banda Sea with high water salinity entering these waters [115]. Seasonal changes can result in changes in temperature and water salinity [74,115,116]. The increase in water salinity in the dry season is thought to be not influenced by intensive technology whiteleg shrimp culture activities in the two subdistricts. However, it is more dominant due to the influence of the season, namely measurements made in the dry season.

In the rainy season, it is known as a mighty west wind accompanied by waves and currents that cause the evaporation rate to be hampered so that it is thought that it can withstand increased salinity [74]. In addition, the low salinity of the water during the rainy season is suspected that there is freshwater runoff from the land, which causes lower water salinity, because the measurement time in the rainy season is the peak of the rainy season in BB and GT (Fig. 5 and 6). The 32 rivers are flowing in the Bulukumba Regency area. The four large rivers have abundant water resources throughout the year, including Bialo, Binjawang, Balantiyeng, and Anyorang Rivers.

A small amount of organic material can cause the high and low pH of the water from the land carried through the river. It is a result of organic matter originating from whiteleg shrimp ponds and other acidic activities on land, which can impact decreasing the pH of the water because the decomposition process of organic matter can produce acidic compounds. In addition, with the increase in the amount of waste, the pH of the water will decrease. This decrease is due to the increase in  $\text{CO}_2$  concentration due to the respiration process carried out by various microorganisms [21,117,118]. Generally, water pH increases in the rainy season and decreases in the dry season, which means that seasonal differences are an essential factor influencing water pH. If not managed, it will harm aquatic organisms in coastal areas.

The low concentration of dissolved oxygen in the dry season measured in September can also be caused by low sea waves at that time. Waves or ocean waves tend to increase dissolved oxygen [119,120], so low waves in September also impact low dissolved oxygen concentrations. September, October, and November are the lowest sea waves in the Flores Sea [121]. Dissolved oxygen good for marine biota is more significant than 5.0 mg/L [61]. Dissolved oxygen in both source and rearing water for intensive whiteleg shrimp culture is greater than 4 mg/L [62].

Beside from supplementary feed and direct excretion of cultured aquatic organisms, another source of ammonia is thought to come from fertilisers used on land for



agricultural activities carried to coastal areas. Sources of ammonia in waters come from fertilisers and feed [122,123]. Surface runoff from settlements generally contains higher nitrate and ammonia concentrations than forests, while fertiliser on agricultural land produces high nitrate and moderate ammonia [124]. It is suspected that the increase in ammonia concentration in the coastal area of Bulukumba Regency comes from intensive technology whiteleg shrimp aquaculture ponds in the form of leftover feed and faeces of whiteleg shrimp as well as other activities that use fertilisers.

Excess or lack of phosphate concentration in aquaculture has an unfavourable impact on the cultured organisms. Excess or lack of a chemical substance in water will cause physiological disturbances in aquatic organisms [125]. Although it is estimated that there is P waste of  $\pm 13.22$  tons/year or 6.61 tons/cycle from intensive technology whiteleg shrimp culture wasted in the coastal area of Bulukumba Regency, the concentration is still relatively low and supports seaweed culture.

The chemical characteristics of the water govern the solubility of inorganic phosphorus in aquatic systems. According to the data from Table 7, it can be seen that there is a very close and positive relationship between phosphate and water pH, which means that the higher the pH, the higher the phosphate concentration. However, it has been reported that the solubility of inorganic phosphorus will decrease at a water pH greater than 9.0 [126]. In this case, the pH of water in the coastal area of Bulukumba Regency is still in the range of water pH, which allows an increase in phosphate with an increase in water pH.

The total suspended solids concentration is less than 80 mg/L and the total organic matter concentration is less than 90 mg/L supporting technology intensive whiteleg shrimp culture [62]. The deeper water depths in the coastal area of the BB impact reduce the agitation of the seabed so that the concentration of total suspended solids will be lower. On the other hand, the relatively shallow water depth in the coastal area of the GT results in greater seafloor agitation resulting in a higher total suspended solids concentration. Another factor that is thought to affect the total suspended solids in the coastal area of Bulukumba Regency is the sea waves, so that when the sea waves are low, namely measurements in the dry season, the concentration of total suspended solids is low. High sea speed and waves cause high total suspended solids [127,128]. Spatially and temporally, the presence and condition of total suspended solids in coastal areas can be influenced by several factors such as ocean currents, tides, river discharge, and land cover [129,130].

The PCA results identified four components or factors with the first two components or factors (F1 and F2) (Fig. 4), showing 68.40% of the total variation of water quality variable data between measurement times (rainy and dry seasons) [67-70]. This data means that although there is a reduction in components, still able to retain most of the water quality information at different times. The position of the rainy season indicates higher temperature, pH, dissolved oxygen, nitrite, total suspended solids, total organic matter as water quality characteristics. Based on location differences, PCA results produced three components with the first two components (F1 and F2) (Fig. 5), explaining 60.14% of the total variation of water quality data between locations (BB and GT) [67-70]. The data indicate that although there was a reduction in components, still able to maintain  $\pm 60\%$  water quality information at different locations. BB position indicates higher temperature, salinity, pH, and dissolved oxygen as water quality characteristics of the site.

PCA also results generally describe that temperature, salinity, pH, and dissolved oxygen are combined in the same component, component 1, and can be referred to as water quality variables measured directly in the field (Fig. 4 and 5). There were ten variables analyzed, and it was also seen that only temperature, salinity, pH, and dissolved oxygen were consistently affected by differences in the place and time of measurement. Temperature, salinity, pH, and dissolved oxygen are the main environmental factors influencing most aquatic species' physiological and ecological

responses in coastal areas. Temperature, salinity, pH, and dissolved oxygen are the main variables that affect shrimp production and the physical and chemical variables of water quality in general [11]. The relevant fraction of these effects can be generalized in the form of a single bioenergy response or an integrated bioenergy model describing the energy flow in individual aquatic organisms [131,132].

#### 4.3. Water Quality Status

One of the causes of the decline in the environmental quality of coastal waters is the discharge of aquaculture waste during operations which contains high concentrations of organic matter and nutrients. This condition is a consequence of the input of pond production facilities in aquaculture, resulting in residual feed and faeces dissolved into the surrounding waters [18,133,134]. In commercial aquaculture, 30% of the total feed given is not consumed by fish/shrimp, and about 25 - 30% of the feed consumed will be excreted [135]. The amount of N and P present in the feed will be retained in fish/shrimp meat between 25 - 30%, and the rest is wasted in the aquatic environment [135]. Estimated nutrient load sourced from feed that is wasted into the coastal waters of Bulukumba Regency in the form of N reaches  $\pm 56.01$  tons/year and P reaches  $\pm 13.22$  tons/year in whiteleg shrimp culture with stocking densities of 100 ind/m<sup>2</sup> up to 220 ind/m<sup>2</sup> in ponds with a total area of  $\pm 69.60$  ha (Table 2). Ten water quality variables are used to determine the status of water quality in coastal areas. Only four water quality variables cause water quality in the coastal area of Bulukumba Regency to be heavily polluted, namely high salinity, low dissolved oxygen, and high nitrate and ammonia concentrations. At high salinity (hyperosmotic) as found in the coastal area of Bulukumba Regency during the dry season, shrimp growth will be disrupted due to the disturbed osmoregulation process. If the energy used for osmoregulation activity increases, the energy for growth decreases, thereby reducing the growth rate of aquatic organisms [131,136]. Meanwhile, dissolved oxygen in water can be reduced due to respiration and decomposition of organic matter on the bottom of the water [137,138], causing a decrease in dissolved oxygen in water, where a decrease in dissolved oxygen concentration to a critical point will cause hypoxia. Hypoxia (dissolved oxygen concentration < 2.0 mg/L or about 30% saturation) is a phenomenon that occurs in the aquatic environment due to a decrease in dissolved oxygen concentration to a limit that can contribute greatly to a decrease in the growth and reproduction ability of aquatic organisms and even death of aquatic organisms in the water [132,139,140]. Nitrate is a form of N that is less toxic than nitrite and ammonia, but it can be toxic to shrimp at high concentrations.

Shrimp exposed to high nitrate concentrations for a long time showed shorter antennae length, gill abnormalities, and hepatopancreas blisters [141,142]. Short antennae and gill abnormalities are often considered early clinical signs of declining shrimp health [141]. Several cases state that excessive ammonia concentrations can cause severe water problems [86]. Such conditions can be caused by the contribution of N originating from the mainland. A significant N contribution comes from fisheries, including from intensive and super-intensive technologies whiteleg shrimp aquaculture ponds [9,10,24]. N penetration also occurs in agriculture, agrochemical, forestry, animal husbandry, and other sectors. Sublethal ammonia to shrimp is the narrowing of the gill surface; as a result, the speed of the gas exchange process in the gills decreases [143,144]. In addition, other effects are a decrease in the number of blood cells, a decrease in the concentration of oxygen in the blood, a decrease in physical resistance and resistance to disease, and structural damage to various types of shrimp organs. Several research results state that the accumulation of ammonia in aquaculture water causes various kinds of damage to aquatic organisms, especially damage to the function and structure of body organs [68,145].

Nutrient enrichment can also reduce the brightness level by stimulating the growth of phytoplankton in water bodies. Increased nutrient concentrations can cause negative coral responses such as decreased reproductive success, calcification rate, and skeleton

density [56,146]. These nutrients can also stimulate macroalgae growth, which can cause coral death due to algal overgrowth [58,147,148]. Understanding the levels and sources of nitrate and ammonia pollution is very important to control nitrogen inputs and promote more sustainable water management in coastal areas.

Changes in the status of water quality from complying quality standards and being polluted in the rainy season to being heavily polluted in the dry season, apart from being suspected of having a load of waste originating from whiteleg shrimp culture, it is also suspected to be due to the influence of the season. Measurements and water sampling carried out in September coincided with the peak of the dry season at the site, which resulted in increased salinity and relatively small dilution of nutrients in coastal areas [149]. The timing of stocking in whiteleg shrimp culture ponds in Bulukumba Regency needs to be carried out appropriately. Information has been obtained that one of the problems with whiteleg shrimp culture in Bulukumba Regency is climatic conditions at certain times that do not support intensive technology whiteleg shrimp culture.

The research results are expected to provide basic information regarding the characteristics and status of water quality in the area. The findings of this study indicate that greater awareness of the environmental impact of intensive whiteleg shrimp ponds and climate is needed if the whiteleg shrimp aquaculture industry is to be developed and fulfils sustainable elements. Suppose the coastal area ecosystem must be protected for the future. It is not easy to present the best option for managing coastal area resources without monitoring water quality temporally and spatially [150,151]. The results of this assessment should be followed by regular monitoring of water quality. So that it is hoped that a healthy aquatic ecosystem will be created that can impact the increase and sustainability of intensive technology whiteleg shrimp aquaculture production and coastal ecosystems where Taka Bonerate National Park is found. Which thus has been designated as a UNESCO Biosphere Reserve, the bioecological balance of the elements that make up the ecosystem in coastal areas, including coral reefs, is an essential key. Therefore, maintaining a balanced level of biodiversity and density between all ecosystem components must be one of the targets and priorities in the coastal area management strategy to achieve a sustainable environment.

## 5. Conclusions

The intensive technology whiteleg shrimp culture in Bulukumba Regency is carried out with a stocking density of 110 ind/m<sup>2</sup> to 220 ind/m<sup>2</sup> with productivity of  $\pm 13.9$  tons/ha/cycle up to  $\pm 44.4$  tons/ha/cycle. The predicted waste load of N is  $\pm 28.00$  tons/cycle and P reaches  $\pm 6.61$  tons/cycle. There was a change in the status of water quality before stocking/initial of culture of whiteleg shrimp (rainy season) in the category of Class C or moderate (moderately polluted) in the BB coastal area and the Class A category or very good (complying quality standard) in the GT coastal area. Both locations were categorized as Class D or poor (heavily polluted) at the end of culture or after harvesting of whiteleg (dry season). Water quality variables that cause a decrease in water quality status in the coastal area of Bulukumba Regency are an increase in salinity, nitrate concentration, and ammonia concentration and a decrease in dissolved oxygen concentration at the end of culture of whiteleg shrimp (dry season). It is necessary to increase the capacity and capability of the WWTP pond for intensive technology whiteleg shrimp ponds in the Bulukumba Regency. This increase is to minimize the burden of waste dumped into coastal areas and a detailed study of the use of WWTP pond with absorption systems in Mediterranean soils and the application of intensive technology. It is necessary to determine a more precise time for whiteleg shrimp stocking by reducing the possibility that whiteleg shrimp culture will still occur at the dry season's peak.

**Author Contributions:** Conceptualization, A.M., M.P., I.M.; methodology, A.M., M.P., I.M.; software, A.M., I.M.; validation, A.M., A.A., E.R., R.A., E.H., K.K., E.S., A.S.; formal analysis, A.M., M.P., E.R., R.A., H.S., S.S.; investigation, A.M., A.A., E.R., E.H., K.K., E.S., A.S.; resources, A.M.; data curation, A.M., A.A., R.A.; writing—original draft preparation, A.M., M.P., E.R., I.M., K.N.;

writing—review and editing, A.M., M.P., H.S., S.S., I.M., K.N.; visualization, A.M., A.A., R.A., K.K.; supervision, A.M. M.P., E.R.; project administration, A.M., M.P., E.R., R.A.; funding acquisition, A.M. All authors have read and agreed to the published version of the manuscript.

**Funding:** This research was financed from the Budget Implementation Entry List (Daftar Isian Pelaksanaan Anggaran, DIPA) of RICAFE in the 2021 Fiscal Year.

**Institutional Review Board Statement:** Not applicable.

**Informed Consent Statement:** Not applicable.

**Data Availability Statement:** Not applicable.

**Acknowledgements:** We would like to thank the Engineering Technicians of the RICAFE. They have assisted in taking water samples in the field and analyzing them in the laboratory. Thanks are also conveyed to the Bulukumba Regency Fisheries Extension for their assistance during the implementation of research in the field. This research was financed from the Budget Implementation Entry List of RICAFE in the 2021 Fiscal Year.

**Conflicts of Interest:** The authors declare no conflict of interest.

## References

1. Barnard, P.L.; Erikson, L.H.; Foxgrover, A.C.; Juliette, A.; Hart, J.A.F.; Limber, P.; O'Neill, A.C.; van-Ormondt, M.; Vitousek, S.; Wood, N.; Hayden, M.K.; Jones, J.M. Dynamic flood modeling essential to assess the coastal impacts of climate change. *Scientific Report*, **2019**; 9(1), 4309. <https://doi.org/10.1038/s41598-019-40742-z>
2. Cortés, A.; Casillas-Hernández; Cambeses-Franco, C.; Bórquez-López, R.; Magallón-Barajas, F.; Quadros-Seiffert, W.; Feijoo, G.; Moreira, M.T. Eco-efficiency assessment of shrimp aquaculture production in Mexico. *Aquaculture*, **2021**; 544, 737145. <https://doi.org/10.1016/j.aquaculture.2021.737145>
3. Lebbe, T.B.; Rey-Valette, H.; Chaumillon, E.; Camus, G.; Almar, R.; Cazenave, A.; Claudet, J.; Rocle, N.; Meur-Férec, C.; Viard, F.; Mercier, D.; Dupuy, C.; Ménard, F.; Rossel, B.A.; Mullineaux, L.; Sicre, M.-A.; Zivian, A.; Gaill, F.; Euzen, A. Designing coastal adaptation strategies to tackle sea level rise. *Frontiers in Marine Science*, **2021**; 03 November. <https://doi.org/10.3389/fmars.2021.740602>
4. Cabral, H.; Fonseca, V.; Sousa, T.; Leal, M.C. Synergistic effects of climate change and marine pollution: An overlooked interaction in coastal and estuarine areas. *International Journal of Environmental Research and Public Health*, **2019**; 16, 2737. <https://doi.org/10.3390/ijerph16152737>
5. Mustafa, A.; Hasnawi, H.; Tarunamulia, T.; Selamat, M.B.; Samawi, M.F. Distribution of heavy metal pollutants in coastal waters used to supply nearby shrimp ponds and their mitigation in Jabon District, East Java Province. *Journal Riset Akuakultur*, **2019**; 14(2), 127–138. [in Indonesian]. <https://doi.org/10.15578/jra.14.2.2019.127-138>
6. Thushari, G.G.N.; Senevirathna, J.D.M. Plastic pollution in the marine environment: Review article. *Heliyon*, **2020**; 6, e04709. <https://doi.org/10.1016/j.heliyon.2020.e04709>
7. De Melo, F.P.; Ferreira, M.G.P.; Braga, Í.F.M.; Correia, E.de S. Toxicity of nitrite on shrimp *Litopenaeus vannamei* reared in clear water and biofloc systems. *Boletim do Instituto de Pesca*, **2018**; 42(4), 855–865. <https://doi.org/10.20950>
8. Marzuki, I.; Alwi, R. S.; Ernati, E.; Kamaruddin, M.; Sinardi, S.; Iryani, A. S. Chitosan performance of shrimp shells in the biosorption Ion metal of cadmium, lead and nickel based on variations pH interaction. *Atlantis Press*, **2019**; 165, 6–11. <https://doi.org/10.2991/icmeme-18.2019.2>
9. Syah, R.; Makmur, M.; Fahrur, M. Vaname shrimp cultivation with high stocking density. *Media Akuakultur*, **2017**; 12(1), 19–26. [in Indonesian] <https://doi.org/10.15578/ma.12.1.2017.19-26>
10. Syah, R.; Makmur, M.; Undu, M.C. Estimation of feed nutrient waste load and carrying capacity of coastal areas for super-intensive vaname shrimp ponds. *Jurnal Riset Akuakultur*, **2014**; 9(3), 439–448. [in Indonesian]. <https://doi.org/10.15578/jra.9.3.2014.439-448>
11. Nguyen, T.A.T.; Nguyen, K.A.T.; Jolly, C. Is super-intensification the solution to shrimp production and export sustainability? *Sustainability*, **2019**; 11, 5277, 1–22. <https://doi.org/10.3390/su11195277>
12. Nguyen, K.A.T.; Nguyen, T.A.T.; Jolly, C.; Nguelifack, B.M. Economic efficiency of extensive and intensive shrimp production under conditions of disease and natural disaster risks in Khánh Hòa and Trà Vinh Provinces, Vietnam. *Sustainability*, **2020**; 12(5), 2140, 19 pp. <https://doi.org/10.3390/su12052140>
13. Marzuki, I.; Kamaruddin, M.; Ahmad, R. Identification of marine sponges-symbiotic bacteria and their application in degrading polycyclic aromatic hydrocarbons. *Biodiversitas*, **2021**; 22(3), 1481–1488. <https://doi.org/10.13057/biodiv/d220352>
14. Engle, C.R.; McNevin, A.; Racine, P.; Boyd, C.E.; Paungkaew, D.; Viriyatum, R.; Tinh, H.Q.; Minh, H.N. Economics of sustainable intensification of aquaculture: Evidence from shrimp farms in Vietnam and Thailand. *Journal of the World Aquaculture Society*, **2017**; 48(2), 227–239. <https://doi.org/10.1111/jwas.12423>
15. Paul, B.G.; Vogl, C.R. Key performance characteristics of organic shrimp aquaculture in Southwest Bangladesh. *Sustainability*, **2012**; 4, 995–1012. <https://doi.org/10.3390/su405099>



16. Bui, T.D.; Luong-Van, J.; Austin, C.M. Impact of shrimp farm effluent on water quality in coastal areas of the World Heritage-Listed Ha Long Bay. *American Journal of Environmental Sciences*, **2012**; 8(2), 104–116. <https://doi.org/10.3844/ajessp.2012.104.116>
17. Chaikaew, P.; Rugkarn, N.; Pongpipatwattana, V.; Kanokkantapong, V. Enhancing ecological-economic efficiency of intensive shrimp farm through in-out nutrient budget and feed conversion ratio. *Sustainable Environment Research*, **2019**; 29(28), 11 pp. <https://doi.org/10.1186/s42834-019-0029-0>
18. Iber, B.T.; Kasan, N.A. Recent advances in shrimp aquaculture wastewater management: Review article. *Heliyon*, **2021**; 7, e08283, 9 pp. <https://doi.org/10.1016/j.heliyon.2021.e08283>
19. Avnimelech, Y.; Ritvo, G. Shrimp and fish pond soils: Processes and management. *Aquaculture*, **2003**; 220, 549–567. [https://doi.org/10.1016/S0044-8486\(02\)00641-5](https://doi.org/10.1016/S0044-8486(02)00641-5)
20. Kallenbach, C.; Frey, S.; Grandy, A. Direct evidence for microbial-derived soil organic matter formation and its ecophysiological controls. *Nature Communications*, **2016**; 7, 13630. <https://doi.org/10.1038/ncomms13630>
21. Ayilara, M.S.; Olanrewaju, O.S.; Babalola, O.O.; Odeyemi, O. Waste management through composting: Challenges and potentials. *Sustainability*, **2020**; 12, 4456, 23 pp. <https://doi.org/10.3390/su12114456>
22. Martins, C.I.B.; Eding, E.H.; Verdegem, M.C.J.; Heinsbroek, L.T.N.; Schneider, O.; Blancheton, J.P.; Roqued'Orbcastel, E.; Verretha, J.A.J. New developments in recirculating aquaculture systems in Europe: A perspective on environmental sustainability. *Aquacultural Engineering*, **2010**; 43(3), 83–93. <https://doi.org/10.1016/j.AQUAENG.2010.09.002>
23. Olusegun, A.A.; Babatunde, D.A.; Abiodun, O.O. Haematological response of *Clarias gariepinus* juveniles reared in treated wastewater after waste solids removal using alum or *Moringa oleifera* seed powder. *International Journal of Aquaculture*, **2016**; 6(11), 1–8. <https://doi.org/10.5376/ija.2016.06.0011>
24. Paena, M.; Syamsuddin, R.; Rani, C.; Tandipayuk, H. Estimation of organic waste loads from shrimp pond superintensive that was disposed in the Labuange Bay waters. *Jurnal Ilmu dan Teknologi Kelautan Tropis*, **2020**; 12(2), 509–518. [in Indonesian]. <https://doi.org/10.29244/jitkt.v12i2.27738>
25. Yang, P.; Zhao, G.; Tong, C.; Tang, K.M.; Lai, D.Y.F.; Li, L.; Tang, C. Assessing nutrient budgets and environmental impacts of coastal land-based aquaculture system in southeastern China. *Agriculture, Ecosystems & Environment*, **2021**; 322, 107662. <https://doi.org/10.1016/j.agee.2021.10766>
26. Cavazos, V.; Alonso, D. Effect of feces leaching on apparent digestibility coefficients of Pacific white shrimp (*Litopenaeus vannamei*). *Hidrobiológica*, **2017**; 27(3), 353–357. <https://doi.org/10.24275/uam/izt/dcbs/hidro/2017v27n3/Villareal>
27. Pomeroy, L.R.; Williams, P.J.L.; Azam, F.; Hobbie, J.E. The microbial loop. *Oceanography*, **2007**; 20, 28–33. <https://doi.org/10.5670/oceanog.2007.45>
28. Beardsley, C.; Moss, S.; Malfatti, F.; Azam, F. Quantitative role of shrimp fecal bacteria in organic matter fluxes in a recirculating shrimp aquaculture system. *FEMS Microbiology Ecology*, **2011**; 77(1), 134–145. <https://doi.org/10.1111/j.1574-6941.2011.01094.x>
29. Vinitnantharat, S.; Patanachan, P.; Pansuk, P. Effect of season on water quality of extensive and intensive seabass culture ponds and associated canals. *Veridian E-Journal, Science and Technology Silpakorn University*, **2019**; 6(6), 1–15. [https://www.researchgate.net/publication/338335533\\_Effect\\_of\\_Season\\_on\\_Water\\_Quality\\_of\\_Extensive\\_and\\_Intensive\\_Seabass\\_Culture\\_Ponds\\_and\\_Associated\\_Canals](https://www.researchgate.net/publication/338335533_Effect_of_Season_on_Water_Quality_of_Extensive_and_Intensive_Seabass_Culture_Ponds_and_Associated_Canals) [Accessed 9 September 2021]
30. Moon, Y.; Kim, H. Inter-annual and seasonal variations of water quality and trophic status of a reservoir with fluctuating monsoon precipitation. *International Journal of Environmental Research Public Health*, **2021**; 18, 8499, 23 pp. <https://doi.org/10.3390/ijerph18168499>
31. Cobo, J.R.; Lock, K.; van Butsel, J.; Pauta, G.; Cisneros, F.; Nopens, I.; Goethals, P.L.M. Biological impact assessment of sewage outfalls in the urbanized area of the Cuenca River basin (Ecuador) in two different seasons. *Limnologia*, **2018**; 71, 8–28. <https://doi.org/10.1016/j.limno.2018.05.003>
32. Lintern, A.; Webb, J.A.; Ryu, D.; Liu, S.; Bende-Michl, U.; Waters, D.; Leahy, P.; Wilson, P.; Western, A.W. Key factors influencing differences in stream water quality across space. *Water*, **2018**; 5(5), e1260, 31 pp. <https://doi.org/10.1002/wat2.1260>
33. Long, D.T.; Pearson, A.L.; Voice, T.C.; Polanco-Rodríguez, A.G.; Sanchez-Rodríguez, E.C.; Xagorarakis, I.; Rzotkiewicz, A.T. Influence of rainy season and land use on drinking water quality in a karst landscape, State of Yucatán, Mexico. *Applied Geochemistry*, **2018**; 98, 265–277. <https://doi.org/10.1016/j.apgeochem.2018.09.020>
34. Mukate, S.; Panaskar, D.; Wagh, V.; Muley, A.; Jangam, C.; Pawar, R. Impact of anthropogenic inputs on water quality in Chincholi industrial area of Solapur, Maharashtra, India. *Groundwater for Sustainable Development*, **2018**; 7, 359–371. <https://doi.org/10.1016/j.gsd.2017.11.001>
35. Wu, Z.; Wang, X.; Chen, Y.; Cai, Y.; Deng, J. Assessing river water quality using water quality index in Lake Taihu basin, China. *Science of the Total Environment*, **2018**; 612, 914–922. <https://doi.org/10.1016/j.scitotenv.2017.08.293>
36. Xu, G.; Li, P.; Lu, K.; Tantai, Z.; Zhang, J.; Ren, Z.; Cheng, Y. Seasonal changes in water quality and its main influencing factors in the Dan River basin. *Catena*, **2018**; 173, 131–140. <https://doi.org/10.1016/j.catena.2018.10.014>
37. Bencs, L.; Horemans, B.; Buczyńska, A.J.; Deutsch, F.; Degraeuwe, B.; van Poppel, M.; van Grieken, R. Seasonality of ship emission related atmospheric pollution over coastal and open waters of the North Sea. *Atmospheric Environment: X*, **2020**; 7, 100077, 1–11. <https://doi.org/10.1016/j.aeaoa.2020.100077>
38. Motovilov, Y.; Fashchevskaya, T. Modeling management and climate change impacts on water pollution by heavy metals in the Nizhnekamskoe Reservoir watershed. *Water*, **2021**; 13, 3214, 21 pp. <https://doi.org/10.3390/w13223214>

39. Mustafa, A.; Asaf, R.; Kamariah, K.; Radiarta, I.N. Concentration and quality status of heavy metals in water and sediment in the coastal area of Sangihe Islands Regency. *Journal Ilmu dan Teknologi Kelautan Tropis*, **2021**; 13(1), 185–200. [in Indonesian] <https://doi.org/10.29244/jitkt.v13i1.35290>
40. Bhateria, R.; Jain, D. Water quality assessment of lake water: A review. *Sustainable Water Resources Management*, **2016**; 2, 161–173. <https://doi.org/10.1007/s40899-015-0014-7>
41. Akhtar, N.; Ishak, M.I.S.; Ahmad, M.I.; Umar, K.; Yusuff, M.S.Md.; Anees, M.T.; Qadir, A.; Almanasir, Y.K.A. Modification of the Water Quality Index (WQI) process for simple calculation using the Multi-Criteria Decision-Making (MCDM) method: A review. *Water*, **2021**; 13, 905, 34 pp. <https://doi.org/10.3390/w13070905>
42. Uddin, Md.G.; Nash, S.; Olbert, A.I. A review of water quality index models and their use for assessing surface water quality. *Ecological Indicators*, **2021**; 122, 107218, 21 pp. <https://doi.org/10.1016/j.ecolind.2020.107218>
43. [SME] State Minister for Environment. Decree of the State Minister of the Environment Number: 115 of 2003 concerning Guidelines for Determining the Status of Water Quality. Jakarta: State Minister for Environment, 15 pp. **2003**. [in Indonesian]. <https://luk.staff.ugm.ac.id/atur/sda/KepmenLH115-2003StatusMutuAir.pdf> [Accessed 12 February 2021]
44. Sun, W.; Xia, C.; Xu, M.; Guo, J.; Sun, G. Application of modified water quality indices as indicators to assess the spatial and temporal trends of water quality in the Dongjiang River. *Ecological Indicators*, **2016**; 66, 306–312. <https://doi.org/10.1016/j.ecolind.2016.01.054>
45. Lima, G.N.; de Lombardo, M.A.; Magaña, V. Urban water supply and the changes in the precipitation patterns in the metropolitan area of São Paulo – Brazil. *Applied Geography*, **2018**; 94, 223–229. <https://doi.org/10.1016/j.apgeog.2018.03.010>
46. Boyd, C.E.; D'Abramo, L.R.; Glencross, B.D.; Huyben, D.C.; Juarez, L.M.; Lockwood, G.S.; McNevin, A.A.; Tacon, A.G.J.; Teletchea, F.; Tomasso, J.R.Jr.; Tucker, C.S.; Valenti, W.C. Achieving sustainable aquaculture: Historical and current perspectives and future needs and challenges. *Journal of World Aquaculture Society*, **2020**; 51, 578–633. <https://doi.org/10.1111/jwas.12714>
47. Effendi, H.; Romanto; Wardiatno, Y. Water quality status of Ciambulawung River, Banten Province, based on pollution index and NSF-WQI. *Proceedings Environmental Sciences*, **2015**; 24, 228–237. <https://doi.org/10.1016/j.proenv.2015.03.030>
48. Dunca, A.-M. Water pollution and water quality assessment of major transboundary rivers from Banat (Romania). *Journal of Chemistry*, **2018**; 9073763, 8 pp. <https://doi.org/10.1155/2018/9073763>
49. Liu, Y.; Zhang, J.; Zhao, Y. The risk assessment of river water pollution based on a Modified Non-Linear Model. *Water*, **2018**; 10, 362, 12 pp. <https://doi.org/10.3390/w10040362>
50. [MMAF] Ministry of Marine Affairs and Fisheries. Aquaculture Center Map. Jakarta: Ministry of Marine Affairs and Fisheries, 57 pp. **2016**. [in Indonesian]. <https://ojk.go.id/sijaring/id/sektor-kelautan-dan-perikanan/usaha-perikanan-budidaya/Dokumen%20Usaha/peta%20sentra%20budidaya%202016.pdf> [Accessed 27 March 2021]
51. Barokah, G.R.; Ariyani, F.; Siregar, T.H. Comparison of Storet and Pollution Index method to assess the environmental pollution status: A case study from Lampung Bay, Indonesia. *Squalen Bulletin of Marine and Fisheries Postharvest and Biotechnology*, **2017**; 12(2), 67–74. <https://doi.org/10.15578/squalen.v12i2.287>
52. Yusnita, E.A.; Triajie, H. Determination of water quality status in estuary waters of Bangkalan District Socah Subdistrict using Storet Method and Pollution Index. *Juvenil – Jurnal Ilmu Kelautan dan Perikanan*, **2021**; 2(2), 157–165. <https://doi.org/10.21107/juvenil.v2i2.10777>
53. Garniati, L.; Iswadi, A.; Praptiwi, R.; Sugardjito, J. Towards sustainable marine and coastal planning for Taka Bonerate Kepulauan Selayar Biosphere Reserve: Indonesian case study to The Global Challenge Research Fund Blue Communities Project. *IOP Conference Series: Earth and Environmental Science*, **2019**; 298, 012008, 8 pp. <https://doi.org/10.1088/1755-1315/298/1/012008>
54. Praptiwi, R.A.; Maharja, C.; Fortnam, M.; Chaigneau, T.; Evans, L.; Garniati, L.; Sugardjito, J. Tourism-based alternative livelihoods for small island communities transitioning towards a blue economy. *Sustainability*, **2021**; 13, 6655, 11 pp. <https://doi.org/10.3390/su13126655>
55. Praptiwi, R.A.; Saab, R.; Setia, T.M.; Wicaksono, G.; Wulandari, P.; Sugardjito, J. Bird diversity in transition zone of Taka Bonerate, Kepulauan Selayar Biosphere Reserve, Indonesia. *Biodiversitas*, **2019**; 20(3), 820–824. <https://doi.org/10.13057/biodiv/d200327>
56. Fabricius, K.E. Effects of terrestrial runoff on the ecology of corals and coral reefs: Review and synthesis. *Marine Pollution Bulletin*, **2005**; 50(2), 125–146. <https://doi.org/10.1016/j.marpolbul.2004.11.028>
57. Riegl, B.M.; Sheppard, C.R.C.; Purkis, S.J. Human impact on atolls leads to coral loss and community homogenisation: A modeling study. *PLoS ONE*, **2012**; 7(6), e36921, 11 pp. <https://doi.org/10.1371/journal.pone.0036921>
58. D'Angelo, C.; Wiedenmann, J. Impacts of nutrient enrichment on coral reefs: New perspectives and implications for coastal management and reef survival. *Current Opinion in Environmental Sustainability*, **2014**; 7, 82–93. <https://doi.org/10.1016/j.cosust.2013.11.029>
59. Ma, Z.; Song, X.; Wan, R. A modified water quality index for intensive shrimp ponds of *Litopenaeus vannamei*. *Ecological Indicators*, **2012**; 24, 287–293. <https://doi.org/10.1016/j.ecolind.2012.06.024>
60. Armus, R.; Selry, C.; Marzuki, I.; Hasan, H.; Syamsia, S.; Sapor, A. Investigation of potential marine bacterial isolates in biodegradation methods on hydrocarbon contamination. *Journal of Physics: Conference Series*, **2021**; 1899, 012006. <https://doi.org/10.1088/1742-6596/1899/1/012006>

61. [ME] Ministry of Environment. Decree of Minister of Environment Number 51 of 2004, date 8 April 2004 about the Standard Quality of Seawater for Marine Biota. Jakarta: Ministry of Environment, 10 pp. **2004**. [in Indonesian]. <https://ppkl.menlhk.go.id/website/filebox/824/191009100640Keputusan%20MENLH%20Nomor%2051%20tahun%202004%20%20tentang%20Baku%20Mutu%20Air%20Laut.pdf> [Accessed 12 February 2021]
62. [MMAF] Ministry of Marine Affairs and Fisheries. Regulation of the Minister of Marine Affairs and Fisheries of the Republic of Indonesia Number 75/Permen-KP/2016 about General Guidelines for Grow-out of Tiger Shrimp (*Penaeus monodon*) and Whiteleg Shrimp (*Litopenaeus vannamei*). Jakarta: Ministry of Marine Affairs and Fisheries, 43 pp. **2016**. [in Indonesian]. <https://bkipm.kkp.go.id/bkipmnew/public/files/regulasi/75-permen-kp-2016-ttg-pedoman-umum-pembesaran-udang-windu...pdf> [Accessed 17 June 2020]
63. [APHA] American Public Health Association-[AWWA] American Water Works Association-[WEF] Water Environment Federation. Standard Methods for the Examination of Water and Wastewater. 22<sup>nd</sup> edition. Edited by E.W. Rice, R.B. Baird, A.D. Eaton, & L.S. Clesceri. Washington, D.C.: American Public Health Association - American Water Works Association - Water Environment Federation, 1496 pp, **2012**. <https://www.amazon.it/Standard-Methods-Examination-Water-Wastewater/dp/0875530133> [Accessed 12 February 2015].
64. Teichert-Coddington, D.R.; Rouse, D.B.; Potts, A.; Boyd, C.E. Treatment of harvest discharge from intensive shrimp ponds by settling. *Aquacultural Engineering*, **1999**; 19, 147-161. [https://doi.org/10.1016/s0144-8609\(98\)00047-8](https://doi.org/10.1016/s0144-8609(98)00047-8)
65. Schmidt, F.H.; Ferguson, J.H.A. Rainfall type based on wet and dry period ratios for Indonesia with Western New Guinea. *Verhandelungen*, **1951**; 42, 77 pp. <https://agris.fao.org/agris-search/search.do?recordID=US201300720509> [Accessed 27 March 2021].
66. Ghasemi, A.; Zahedias, S. Normality tests for statistical analysis: A guide for non-statisticians. *International Journal of Endocrinology and Metabolism*, **2012**; 10(2), 486-489. <https://doi.org/10.5812/ijem.3505>
67. Jolliffe, I.T.; Cadima, J. Principal component analysis: A review and recent developments. *Philosophical Transactions of The Royal Society*, **2016**; 374, 2015.0202. <https://doi.org/10.1098/rsta.2015.0202>
68. Zhao, M.; Yao, D.; Li, S.; Zhang, Y.; Aweya, J.J. Effects of ammonia on shrimp physiology and immunity: A review. *Reviews in Aquaculture*, **2020**; 1-18. <https://doi.org/10.1111/raq.12429>
69. Zhou, F.; Guo, H.; Liu, Y.; Jiang, Y. Chemometrics data analysis of marine water quality and source identification in Southern Hong Kong. *Marine Pollution Bulletin*, **2007**; 54(6), 745-756. <https://doi.org/10.1016/j.marpolbul.2007.01.006>
70. Vidal, N.P.; Manful, C.F.; Phama, T.H.; Stewart, P.; Keough, D.; Thomas, R.H. The use of XLSTAT in conducting principal component analysis (PCA) when evaluating the relationships between sensory and quality attributes in grilled foods. *MethodsX*, **2020**; 7, 100835, 9 pp. <https://doi.org/10.1016/j.mex.2020.100835>
71. Canter, L.W. Environmental impact assessment. *Impact Assessment*, **1982**; 1(2), 6-40. <https://doi.org/10.1080/07349165.1982.9725447>
72. Schnoor, J.L. Water quality and its sustainability introduction. *Comprehensive Water Quality and Purification*, **2014**; 4, 1-40. <https://doi.org/10.1016/B978-0-12-382182-9.00057-8>
73. Chen, J.; Wang, Y.; Li, F.; Liu, Z. Aquatic ecosystem health assessment of a typical sub-basin of the Liao River based on entropy weights and a fuzzy comprehensive evaluation method. *Scientific Reports*, **2019**; 9, 14045. <https://doi.org/10.1038/s41598-019-50499-0>
74. Patty, S.I.; Rizki, M.P.; Rifai, H.; Akbar N. Water quality and sea pollution index in Manado Bay the view physical-chemical paramaters sea. *Jurnal Ilmu Kelautan Kepulauan*, **2019**; 2(2), 1-13. [in Indonesian]. <https://doi.org/10.33387/jikk.v2i2.1387>
75. Lestari, H.A.; Samawi, M.F.; Faizal, A.; Moore, A.M.; Jompa, J. Physical and chemical parameters of estuarine waters around South Sulawesi. *Indonesian Journal of Geography*, **2021**; 53(3), 373-387. <https://doi.org/10.22146/ijg.67831>
76. Zang, C.; Huang, S.; Wu, M.; Du, S.; Scholz, M.; Gao, F.; Lin, C.; Guo, Y.; Dong, Y. Comparison of relationships between pH, dissolved oxygen and chlorophyll a for aquaculture and non-aquaculture waters. *Water Air Soil Pollution*, **2011**; 219, 157-174. <https://doi.org/10.1007/s11270-010-0695-3>
77. Sun, Y.; Zhu, L.; Xu, X.; Meng, Q.; Men, M.; Xu, B.; Deng, L. Correlation between ammonia-oxidizing microorganisms and environmental factors during cattle manure composting. *Revista Argentina de Microbiología*, **2019**; 51(4), 371-380. <https://doi.org/10.1016/j.ram.2018.12.002>
78. Ospina-Alvarez, N.; Prego, R.; Alvarez, I.; deCastro, M.; Alvarez-Ossorio, M.T.; Pazos, Y.; Campos, M.J.; Bernardez, P.; Garcia-Soto, C.; Gomez-Gesteira, M.; Varela, M. Oceanographical patterns during a summer upwelling-downwelling event in the Northern Galician Rias: Comparison with the whole Ria system (NW of Iberian Peninsula). *Continental Shelf Research*, **2010**; 30, 1362-1372. <https://doi.org/10.1016/j.csr.2010.04.018>
79. Pauly, D. The gill-oxygen limitation theory (GOLT) and its critics. *Science Advances*, **2021**; 7(2), eabc6050. <https://doi.org/10.1126/sciadv.abc6050>
80. Yang, X.; Wu, X.; Hao, H.; He, Z. Mechanisms and assessment of water eutrophication. *Journal of Zhejiang University Science B*, **2008**; 9(3), 197-209. <https://doi.org/10.1631/jzus.B0710626>
81. Hlordzi, V.; Kuebutornye, F.K.A.; Afriyie, G. Abarike, E.D.; Lu, Y.; Chia, S.; Anokyewaa, M.A. The use of Bacillus species in maintenance of water quality in aquaculture: A review. *Aquaculture Reports*, **2020**; 18, 100503. <https://doi.org/10.1016/j.aqrep.2020.100503>



82. Oladokun, O.S.; Tee, K.F.; Kader, A.S.A. Water quality test and site selection for suitable species for seaweed farm in East Coast of Malaysia. *Biosciences Biotechnology Research Asia*, **2015**; 12(2), 33–39. <https://doi.org/10.13005/bbra/2169>
83. Seghetta, M.; Tørring, D.; Bruhn, A.; Thomsen, M. Bioextraction potential of seaweed in Denmark – An instrument for circular nutrient management. *Science of the Total Environment*, **2016**; 563–564, 513–529. <https://doi.org/10.1016/j.scitotenv.2016.04.010>
84. Hargreaves, J.A. Nitrogen biogeochemistry of aquaculture ponds. *Aquaculture*, **1998**; 166(3–4), 181–212. [https://doi.org/10.1016/S0044-8486\(98\)00298-1](https://doi.org/10.1016/S0044-8486(98)00298-1)
85. Kamaruddin, M.; Marzuki, I.; Burhan, A.; Ahmad, R. Screening acetylcholinesterase inhibitors from marine-derived actinomycetes by simple chromatography. *IOP Conference Series: Earth and Environmental Science*, **2021**; 679, 012011. <https://doi.org/10.1088/1755-1315/679/1/012011>
86. Boyd, C.E. Guidelines for aquaculture effluent management at the farm-level. *Aquaculture*, **2003**; 226(1–4), 101–112. [https://doi.org/10.1016/S0044-8486\(03\)00471-X](https://doi.org/10.1016/S0044-8486(03)00471-X)
87. Burford, M.A.; Smith, D.M.; Tabrett, S.; Coman, F.E.; Thomson, P.J.; Barclay, M.C.; Toscas, P.J. The effect of dietary protein on the growth and survival of the shrimp, *Penaeus monodon* in outdoor tanks. *Aquaculture Nutrition*, **2004**; 10(1), 15–23. <https://doi.org/10.1046/j.1365-2095.2003.00274.x>
88. Lia, Y.-H.; Menviela, L.; Peng, T.-H. Nitrate deficits by nitrification and denitrification processes in the Indian Ocean. *Deep-Sea Research*, **2016**; 53(1), 94–110. <https://doi.org/10.1016/j.dsr.2005.09.009>
89. Yang, Y.-F.; Fei, X.-G.; Song, J.-M.; Hu, H.-Y.; Wang, G.-C.; Chung, I.K. Growth of *Gracilaria lemaneiformis* under different cultivation conditions and its effects on nutrient removal in Chinese coastal waters. *Aquaculture*, **2006**; 254(1–4), 248–255. <https://doi.org/10.1016/j.aquaculture.2005.08.029>
90. Tsagakamilis, P.; Danielidis, D.; Dring, M.J.; Katsaros, C.I. Removal of phosphate by the green seaweed *Ulva lactuca* in a small-scale sewage treatment plant (Ios Island, Aegean Sea, Greece). *Journal of Applied Phycology*, **2020**; 22(3), 331–339. <https://doi.org/10.1007/s10811-009-9463-4>
91. Roleda, M.Y.; Hurd, C.L. Seaweed nutrient physiology: Application of concepts to aquaculture and bioremediation. *Phycologia*, **2019**; 58(5), 552–562. <https://doi.org/10.1080/00318884.2019.1622920>
92. Guignard, M.S.; Leitch, A.R.; Acquisti, C.; Eizaguirre, C.; Elser, J.J.; Hessen, D.O.; Jeyasingh, P.D.; Neiman, M.; Richardson, A.E.; Soltis, P.S.; Soltis, D.E.; Stevens, C.J.; Trimmer, M.; Weider, L.J.; Woodward, G.; Leitch, I.J. Impacts of nitrogen and phosphorus: From genomes to natural ecosystems and agriculture. *Frontiers in Ecology Evolution*, **2017**; 5, 70. <https://doi.org/10.3389/fevo.2017.00070>
93. Rusli, M.; Chaerul, M.; Marzuki, I. Adaptation of climate change to vulnerability of raw water availability in Bantaeng, South Sulawesi. *Journal of Physics: Conference Series*, **2021**; 1899, 012062. <https://doi.org/10.1088/1742-6596/1899/1/012062>
94. Douglas, E.J.; Haggitt, T.R.; Rees, T.A.V. Supply- and demand-driven phosphate uptake and tissue phosphorus in temperate seaweeds. *Aquatic Biology*, **2014**; 23, 49–60. <https://doi.org/10.3354/ab00601>
95. Douglas, E.J.; Haggitt, T.R.; Rees, T.A.V. Relationship between tissue phosphorus and seawater phosphate in the brown alga *Hormosira banksii*. *New Zealand Journal of Marine and Freshwater Research*, **2015**; 49(1), 64–68. <https://doi.org/10.1080/00288330.2014.935737>
96. Lourenco, S.O.; Barbarino, E.; Nascimento, A.; Freitas, J.N.P.; Diniz, G.S. Tissue nitrogen and phosphorus in seaweeds in a tropical eutrophic environment: What a long-term study tells us. *Journal of Applied Phycology*, **2006**; 18(3–5), 389–398. [https://doi.org/10.1007/978-1-4020-5670-3\\_21](https://doi.org/10.1007/978-1-4020-5670-3_21)
97. Saeed, M.O.; Al-Nomazi, M.A.; Al-Amoudi, A.S. Evaluating suitability of sourcewater for a proposed SWRO plant location. *Heliyon*, **2019**; 5(1), e01119. <https://doi.org/10.1016/j.heliyon.2019.e01119>
98. Kasan, N.A.; Kamaruzzan, A.S.; Rahim, A.I.A.; Ishak, A.N.; Jauhari, I., & Ikhwanuddin, M. Production of Pacific whiteleg shrimp, *Litopenaeus vannamei* through implementation of rapid biofloc technology. *IOP Conference Series: Earth and Environmental Science*, **2019**; 370, 012005, 9 pp. <https://doi.org/10.1088/1755-1315/370/1/012005>
99. Lebel, L.; Mungkung, R.; Gheewala, S.H., & Lebel, P. Innovation cycles, niches and sustainability in the shrimp aquaculture industry in Thailand. *Environmental Science & Policy*, **2010**; 13(4), 291–302. <https://doi.org/10.1016/j.envsci.2010.03.005>
100. Chatvijitkul, S.; Boyd, C.E., & Davis, D.A. Nitrogen, phosphorus, and carbon concentrations in some common aquaculture feeds. *Journal of the World Aquaculture Society*, **2017**; 49(6), 7 pp. <https://doi.org/10.1111/jwas.12443>
101. Muqsith, A.; Harahab, N.; Mahmudi, M.; Fadjar, M. The estimation of loading feed nutrient waste from vannamei shrimp aquaculture pond and carrying capacity of coastal area in Banyuputih Sub-district Situbondo Regency. *International Conference on Biology and Applied Science (ICOBAS)*, **2019**; 2120, 040037-1-040037-5. <https://doi.org/10.1063/1.5115675>
102. Torrent, J. Mediterranean soils. *Encyclopedia of Soils in the Environment*, **2005**; 2005, 418–427. <https://doi.org/10.1016/B0-12-348530-4/00023-0>
103. Lucke, B.; Kemnitz, H.; Bäuml, R.; Schmidt, M. Red Mediterranean Soils in Jordan: New insights in their origin, genesis, and role as environmental archives. *CATENA*, **2014**; 112, 4–24. <https://doi.org/10.1016/j.catena.2013.04.006>
104. Spaargaren, O.C.; Deckers, J.A. Factors of soil formation: Climate. *Encyclopedia of Soils in the Environment*, **2005**; 2005, 512–520. <https://doi.org/10.1016/B0-12-348530-4/00012-6>
105. White, A.F. Natural weathering rates of silicate minerals. *Treatise on Geochemistry*, **2003**; 5, 133–168. <https://doi.org/10.1016/B0-08-043751-6/05076-3>
106. Kretzschmar, R. Colloid-facilitated sorption and transport. *Encyclopedia of Soils in the Environment*, **2005**; 2005, 276–284. <https://doi.org/10.1016/B0-12-348530-4/00201-0>



107. Yamanaka, M.D. Physical climatology of Indonesian maritime continent: An outline to comprehend observational studies. *Atmospheric Research*, **2016**; 178–179, 231–259. <https://doi.org/10.1016/j.atmosres.2016.03.017>
108. Mimura, N. Sea-level rise caused by climate change and its implications for society. *Series B, Physical and Biological Sciences*, **2013**; 89(7), 281–301. <https://doi.org/10.2183/pjab.89.281>
109. Tanto, T.A. Detection of sea surface temperature (SST) using the satellites. *Jurnal Kelautan*, **2020**; 13(2), 126–141. [in Indonesian]. <http://doi.org/10.21107/jk.v13i2.7257>
110. Akbari, E.; Alavipanah, S.K.; Jeyhouni, M.; Hajeb, M.; Haase, D.; Alavipanah, S. A review of ocean/sea subsurface water temperature studies from remote sensing and non-remote sensing methods. *Water*, **2017**; 9, 936. <https://doi.org/10.3390/w9120936>
111. Girjatowicz, J.P.; Świątek, M. Effects of atmospheric circulation on water temperature along the southern Baltic Sea coast. *Oceanologia*, **2019**; 61(1), 38–49. <https://doi.org/10.1016/j.oceano.2018.06.002>
112. Norouzi, N. Climate change impacts on the waterflow to the reservoir of the Dez Dam basin. *Water Cycle*, **2020**; 1, 113–120. <https://doi.org/10.1016/j.watcyc.2020.08.001>
113. Cañedo-Argüelles, M.; Kefford, B.; Schäfer, R. Salt in freshwaters: Causes, effects and prospects - introduction to the theme issue. *Philosophical Transactions B*, **2019**; 374, 20180002, 6 pp. <https://doi.org/10.1098/rstb.2018.0002>
114. Zhou, F.; Lu, X.; Chen, F.; Zhu, Q.; Meng, Y.; Chen, C.; Lao, Q.; Zhang, S. Spatial-monthly variations and influencing factors of dissolved oxygen in surface water of Zhanjiang Bay, China. *Journal of Marine Science and Engineering*, **2020**; 8, 403, 16 pp. <https://doi.org/10.3390/jmse8060403>
115. Bahiyah, A.; Wirasatriya, A.; Marwoto, J.; Handoyo, G.; Anugrah, D.S.P.A. Study of seasonal variation of sea surface salinity in Java Sea and its surrounding seas using SMAP satellite. *IOP Conference Series: Earth and Environmental Science*, **2019**; 246, 012043, 12 pp. <https://doi.org/10.1088/1755-1315/246/1/012043>
116. Skudra, M.; Lips, U. Characteristics and inter-annual changes in temperature, salinity and density distribution in the Gulf of Riga. *Oceanologia*, **2017**; 59(1), 37–48. <https://doi.org/10.1016/j.oceano.2016.07.001>
117. Boyd, C.E. Pond water aeration systems. *Aquacultural Engineering*, **1998**; 18(1), 9–40. [https://doi.org/10.1016/S0144-8609\(98\)00019-3](https://doi.org/10.1016/S0144-8609(98)00019-3)
118. Dijkstra, P.; Thomas, S.C.; Heinrich, P.L.; Koch, G.W.; Schwartz, E.; Hungate, B.A. Effect of temperature on metabolic activity of intact microbial communities: Evidence for altered metabolic pathway activity but not for increased maintenance respiration and reduced carbon use efficiency. *Soil Biology & Biochemistry*, **2011**; 43, 2023–2031. <https://doi.org/10.1016/j.soilbio.2011.05.018>
119. Yin, Z.; Wang, Y.; Liu, Y.; Gao, C.; Zhang, H. Laboratory investigation on hydrodynamic performance of an innovative aeration device with a wave-driven heaving buoy. *Energies*, **2018**; 11, 3262, 15 pp. <https://doi.org/10.3390/en11123262>
120. Comfort, C.M.; Walker, G.O.; McManus, M.A.; Fujimura, A.G.; Ostrander, C.E.; Donaldson, T.J. Physical dynamics of the reef flat, channel, and fore reef areas of a fringing reef embayment: An oceanographic study of Pago Bay, Guam. *Regional Studies in Marine Science*, **2019**, 31, 100740, 15 pp. <https://doi.org/10.1016/j.rsma.2019.100740>
121. Kurniawan, R.; Habibie, M.N.; Suratno. Monthly ocean waves variation over Indonesia. *Jurnal Meteorologi dan Geofisika*, **2011**; 12(3), 221–232. [in Indonesian]. <https://doi.org/10.31172/jmg.v12i3.104>
122. McIsaac, G. Surface water pollution by nitrogen fertilizers. *Encyclopedia of Water Science*, **2003**; 2003, 950–955. <https://doi.org/10.1081/E-EWS 120010336>
123. Velthof, G.L.; van Bruggen, C.; Groenestein, C.M.; de Haan, B.J.; Hoogeveen, M.W.; Huijsmans, J.F.M. A model for inventory of ammonia emissions from agriculture in the Netherlands. *Atmospheric Environment*, **2012**; 46, 248–255. <https://doi.org/10.1016/j.atmosenv.2011.09.075>
124. Wurtsbaugh, W.A.; Paerl, H.W.; Dodds, W.K. Nutrients, eutrophication and harmful algal blooms along the freshwater to marine continuum. *Wiley Interdisciplinary Review: Water*, **2019**; 6(5), 1–27. <https://doi.org/10.1002/wat2.1373>
125. Ali, H.; Ezzat Khan, E., & Ilahi, I. Environmental chemistry and ecotoxicology of hazardous heavy metals: Environmental persistence, toxicity, and bioaccumulation. *Hindawi Journal of Chemistry*, **2019**; 6730305, 14 pp. <https://doi.org/10.1155/2019/6730305>
126. Diaz, O.A.; Reddy, K.R.; Moore, P.A., Jr. Solubility of inorganic phosphorus in stream water as influenced by pH and calcium concentration. *Water Research*, **1994**; 28(8), 1755–1763. [https://doi.org/10.1016/0043-1354\(94\)90248-8](https://doi.org/10.1016/0043-1354(94)90248-8)
127. Nurjaya, I.W.; Surbakati, H.; Natih, N.M.N. Model of total suspended solid (TSS) distribution due to coastal mining in Western Coast of Kundur Island part of Berhala Strait. *IOP Conference Series: Earth and Environmental Science*, **2019**; 278, 012056, 17 pp. <https://doi.org/10.1088/1755-1315/278/1/012056>
128. Raposa, K.B.; Wasson, K.; Smith, E.; Crooks, J.A.; Delgado, P.; Fernald, S.H.; Ferner, M.C.; Helms, A.; Hice, L.A.; Mora, J.W.; Puckett, B.; Sanger, D.; Shull, S.; Spurrier, L.; Stevens, R.; Lerberg, S. Assessing tidal marsh resilience to sea-level rise at broad geographic scales with multi-metric indices. *Biological Conservation*, **2016**; article in press, 13 pp. <https://doi.org/10.1016/j.biocon.2016.10.015>
129. Wang, C.; Li, W.; Chen, S.; Li, D.; Wang, D.; Liu, J. The spatial and temporal variation of total suspended solid concentration in Pearl River Estuary during 1987–2015 based on remote sensing. *Science of The Total Environment*, **2017**; 618(5), 1125–1138. <https://doi.org/10.1016/j.scitotenv.2017.09.196>

130. Hiatt, M.; Snedden, G.; Day, J.W.; Rohli, R.V.; Nyman, J.A.; Lane, R.; Sharp, L.A. Drivers and impacts of water level fluctuations in the Mississippi River delta: Implications for delta restoration. *Estuarine, Coastal and Shelf Science*, **2019**; *224*, 117–137. <https://doi.org/10.1016/j.ecss.2019.04.020>
131. Niklitschek, E.J.; Secor, D.H. Dissolved oxygen, temperature and salinity effects on the ecophysiology and survival of juvenile Atlantic sturgeon in estuarine waters: II. Model development and testing. *Journal of Experimental Marine Biology and Ecology*, **2009**; *381*, S161–S172. <https://doi.org/10.1016/j.jembe.2009.07.019>
132. Seitz, R.D.; Dauer, D.M.; Llansó, R.J.; Long, W.C. Broad-scale effects of hypoxia on benthic community structure in Chesapeake Bay, USA. *Journal of Experimental Marine Biology and Ecology*, **2009**; *381*, S4–S1. <https://doi.org/10.1016/j.jembe.2009.07.004>
133. Saiya, H.G.; Katoppo, K.T. Waste management of shrimp farms as starting point to develop integrated farming systems (Case study: Kuwaru Coast, Bantul, Yogyakarta, Indonesia). *Journal of Degraded and Mining Lands Management*, **2015**; *3*(1), 423–432. <https://doi.org/10.15243/jdmlm.2015.031.423>
134. Naylor, R.L.; Hardy, R.W.; Buschmann, A.H.; Bush, S.R.; Cao, L.; Klinger, D.H.; Little, D.C.; Lubchenco, J.; Shumway, S.E.; Troell, M. A 20-year retrospective review of global aquaculture. *Nature*, **2021**; *591*, 551–563. <https://doi.org/10.1038/s41586-021-03308-6>
135. McDonald, M.E.; Tikkanen, C.A.; Axler, R.P.; Larsen, C.P.; Host, G. Fish simulation culture model (FIS-C): A bioenergetics based model for aquacultural wasteload application. *Aquacultural Engineering*, **1996**; *15*(4), 243–259. [https://doi.org/10.1016/0144-8609\(96\)00260-9](https://doi.org/10.1016/0144-8609(96)00260-9)
136. Stricker, E.M.; Verbalis, J.G. Water and salt intake and body fluid homeostasis. *Fundamental Neuroscience*, **2013**; *2013*, 783–797. <https://doi.org/10.1016/B978-0-12-385870-2.00037-8>
137. van der Lee, G.H.; Kraak, M.H.S.; Verdonshot, R.C.M.; Vonk, J.A.; Verdonshot, P.F.M. Oxygen drives benthic-pelagic decomposition pathways in shallow wetlands. *Scientific Reports*, **2017**; *7*, 1505. <https://doi.org/10.1038/s41598-017-15432-3>
138. Leidonald, R.; Muhtadi, A.; Lesmana, J.; Harahap, Z.A.; Rahmadya, A. Profiles of temperature, salinity, dissolved oxygen, and pH in tidal lakes. *IOP Conference Series: Earth and Environmental Science*, **2019**; *260*, 012075. <https://doi.org/10.1088/1755-1315/260/1/012075>
139. Friedrich, J.; Janssen, F.; Aleynik, D.; Bange, H.W.; Boltacheva, N.; Çagatay, M.N.; Dale, A.W.; Etiope, G.; Erdem, Z.; Geraga, M.; Gilli, A.; Gomoiu, M.T.; Hall, P.O.J.; Hansson, D.; He, Y.; Holtappels, M.; Kirf, M.K.; Kononets, M.; Kononov, S.; Lichtschlag, A.; Livingstone, D.M.; Marinaro, G.; Mazlumyan, S.; Naeher, S.; North, R.P.; Papatheodorou, G.; Pfannkuche, O.; Prien, R.; Rehder, G.; Schubert, C.J.; Soltwedel, T.; Sommer, S.; Stahl, H.; Stanev, E.V.; Teaca, A.; Tengberg, A.; Waldmann, C.; Wehrli, B.; Wenzhöfer, F. Investigating hypoxia in aquatic environments: Diverse approaches to addressing a complex phenomenon. *Biogeosciences*, **2014**; *11*, 1215–1259. <https://doi.org/10.5194/bg-11-1215-2014>
140. Yin, Z.; Wang, Y.; Liu, Y.; Gao, C.; Zhang, H. Laboratory investigation on hydrodynamic performance of an innovative aeration device with a wave-driven heaving buoy. *Energies*, **2018**; *11*, 3262, 15 pp. <https://doi.org/10.3390/en11123262>
141. Walker, P.J.; Winton, J.R. The Emerging viral diseases of fish and shrimp. *Veterinary Research*, **2010**; *41*(6), 51. <https://doi.org/10.1051/vetres/2010022>
142. Furtado, P.S.; Campos, B.R.; Serra, F.P.; Klosterhoff, M.; Romano, L.A.; Wasielesky, W.Jr. Effects of nitrate toxicity in the Pacific white shrimp, *Litopenaeus vannamei*, reared with biofloc technology (BFT). *Aquaculture International*, **2014**; *23*(1), 315–327. <https://doi.org/10.1007/s10499-014-9817-z>
143. Hughes, G.M.; Morgan, M. The structure of fish gills in relation to their respiratory function. *Biological Reviews of the Cambridge Philosophical Society*, **2008**; *48*(3), 419–475. <https://doi.org/10.1111/j.1469-185X.1973.tb01009.x>
144. Henry, R.P.; Lucu, C.; Onken, H.; Weihrauch, D. Multiple functions of the crustacean gill: Osmotic/ionic regulation, acid-base balance, ammonia excretion, and bioaccumulation of toxic metals. *Frontiers in Aquatic Physiology*, **2012**; *3*, 431. <https://doi.org/10.3389/fphys.2012.00431>
145. Abakari, G.; Luo, G.; Kombat, E.O. Dynamics of nitrogenous compounds and their control in biofloc technology (BFT) systems: A review. *Aquaculture and Fisheries*, **2021**; *6*(5), 4414–4447. <https://doi.org/10.1016/j.aaf.2020.05.005>
146. Dunn, J.G.; Sammarco, P.W.; LaFleur, G. Effects of phosphate on growth and skeletal density in the scleractinian coral *Acropora muricata*: A controlled experimental approach. *Journal of Experimental Marine Biology and Ecology*, **2012**; *411*, 34–44. <https://doi.org/10.1016/j.jembe.2011.10.013>
147. Loya, Y.; Lubinevsky, H.; Rosenfeld, M.; Kramarsky-Winter, E. Nutrient enrichment caused by in situ fish farms at Eilat, Red Sea is detrimental to coral reproduction. *Marine Pollution Bulletin*, **2004**; *49*(4), 344–353. <https://doi.org/10.1016/j.marpolbul.2004.06.011>
148. DeGeorges, A.; Goreau, T.J.; Reilly, B. Land-sourced pollution with an emphasis on domestic sewage: Lessons from the Caribbean and implications for coastal development on Indian Ocean and Pacific Coral Reefs. *Sustainability*, **2020**; *2*, 2919–2949. <https://doi.org/10.3390/su2092919>
149. Li, R.H.; Liu, S.M.; Li, Y.W.; Zhang, G.L.; Ren, J.L., & Zhang, J. Nutrient dynamics in tropical rivers, estuarine-lagoons, and coastal ecosystems along the eastern Hainan Island. *Biogeosciences Discussions*, **2013**; *10*, 9091–9147. <https://doi.org/10.5194/bgd-10-9091-2013>
150. Bierman, P.; Lewis, M.; Ostendorf, B.; Tanner, J.E. (2009). A review of methods for analysing spatial and temporal patterns in coastal water quality. *Ecological Indicators*, **2009**; *11*(1), 103–114. <https://doi.org/10.1016/j.ecolind.2009.11.001>

- 
151. Salea, P.F., Agardy, T., Ainsworth, C.H., Feist, B.E., Bell, J.D., Christie, P., Hoegh-Guldberg, O., Mumby, P.J., Feary, D.A., Saunders, M.I., Daw, T.M., Foale, S.J., Levin, P.S., Lindeman, K.C., Lorenzen, K., Pomeroy, R.S., Allison, E.H., Bradbury, R.H., Corrin, J., Edwards, A.J., Obura, D.O., de Mitcheson, Y.J.S., Samoilys, M.A., & Charles R.C. Sheppard, C.R.C. Transforming management of tropical coastal seas to cope with challenges of the 21<sup>st</sup> century. *Marine Pollution Bulletin*, **2014**; 85, 8–23. <https://doi.org/10.1016/j.marpolbul.2014.06.005>