

Article

# Low-content Pre-emulsified Safflower Seed Oil enhances the Quality and Flavor of the *Nemipterus virgatus* Surimi Gel

Chunyong Song<sup>1</sup>, Yufeng Lin<sup>1</sup>, Pengzhi Hong<sup>1,2</sup>, Huanming Liu<sup>1,2</sup> and Chunxia Zhou<sup>1,2,\*</sup>

<sup>1</sup> College of Food Science and Technology, Guangdong Ocean University, Guangdong Provincial Key Laboratory of Aquatic Product Processing and Safety, Guangdong Provincial Engineering Technology Research Center of Marine Food, Guangdong Modern Agricultural Science and Technology Innovation Center, Guangdong Zhanjiang 524088, China

<sup>2</sup> Southern Marine Science and Engineering Guangdong Laboratory (Zhanjiang), Guangdong Zhanjiang 524088

\* Correspondence: chunxia.zhou@163.com; Tel.: 13828262885

**Abstract:** Surimi-based products occupy an important position in the aquatic product processing industry. To enhance the quality and flavor of surimi-based products, the effects of pre-emulsified safflower seed oil on the texture, water-holding capacity (WHC), microstructure, and flavor of *Nemipterus virgatus* surimi gel was evaluated. The texture and whiteness of gel were improved, and the WHC increased ( $P < 0.05$ ) as the content of safflower seed oil increased up to 2 mL per 100 g surimi. Furthermore, the drops of pre-emulsified safflower seed oils with an average diameter of less than 0.10  $\mu\text{m}$  were evenly distributed in gel matrix. Microstructure and infrared spectroscopy analyses indicated that low-content pre-emulsified safflower seed oil acted as filler particles to occupy void spaces, resulting in gel exhibiting a dense network structure. Volatile analysis showed the gel containing pre-emulsified oil enriched volatile compounds, mainly resulting from oxidation and decomposition of oils by the activation of lipoxygenase, which synergistically contributes to unique flavors of gel. Consequently, low-content pre-emulsified safflower seed oil can be used to enhance the quality and flavor of *N. virgatus* surimi-based products. These findings are especially relevant to the current growing interest in low-fat and high-protein diets.

**Keywords:** *Nemipterus virgatus* surimi; pre-emulsified safflower seed oil; gel texture; microstructure; flavor

## 1. Introduction

Surimi, a functional ingredient used for surimi-based products, is produced by collecting fish meat, and subsequent washing, dehydrating, and filtering [1,2]. Surimi-based products have been widely accepted by consumers because of their rich nutrient values, their unique gel properties and inexpensive protein source [3,4]. During the rinsing stage of surimi production, many nutritious and valuable fish lipids are discarded to concentrate myofibrillar proteins and reduce lipid oxidation during storage. However, fish lipids play an indispensable role in maintaining the gel texture and rheological properties, providing the unique flavor of surimi-based products, and generating high-nutritious surimi-based products [5]. Moreover, lipid deficiency leads to surimi gels with an extremely rough taste and unpleasant texture, severely influencing the quality and flavor of surimi-based products [6]. Therefore, the production of high-quality and unique flavors of surimi-based products has recently gained increasing attention.

Exogenous oils/fats are usually added as texture modifiers, color enhancers and processing aids during the production of surimi-based products [7]. In the current study, various animal fats and vegetable oils were added to enhance the gel texture and flavor of surimi-based products, such as camellia oil [1], fish oil [5], lard [8], coconut oil [9], and soybean oil [10]. The emulsified lard restrained the cross-linking of myosin heavy chain and destroyed the three-dimensional gel network, resulting in the poor texture and low

water-holding capacity of the *Nemipterus virgatus* surimi gel [8]. Camellia oil with high oleic acid content has shown to effectively enhance the whiteness, texture, and sensory properties of white croaker surimi gels [1]. However, coconut oil with a high content of lauric acid significantly reduced the texture and water-holding capacity of croaker surimi gels [9]. Mi et al. [11] also found that the grass surimi gels containing 3% perilla seed oil show a three-dimensional gel network structures denser than that of soybean oil and flax-seed oil. However, the water-holding capacity of gels began to decrease as the perilla seed oil content increased to 5%. Overall, the direct addition of oils can have a negative effect on surimi gels with low water-holding capacity and high oil oxidation. These studies suggest that the method of adding oil should be changed to improve the gel quality.

Previous studies have confirmed that pre-emulsified oils have more positive effects on the quality of surimi gels than those containing oils without pre-emulsification [7,12]. Use of pre-emulsified virgin coconut oil with sodium caseinate resulted in oil droplets evenly distributed in the croaker surimi gels, which improved the texture and whiteness of gels, whereas this was not observed when the oil without pre-emulsification was used [13]. Silver carp surimi gels with pre-emulsified camellia seed oil had higher whiteness and water-holding capacity than gels with pre-emulsified lard, and the breaking force and deformation showed the highest values when the lard/oil content increased to 2% [14]. Similarly, the pre-emulsified lard with soybean protein isolate could also improve the whiteness and juiciness of the *N. virgatus* surimi gel, but the network structure of gels became loose and irregular as the lard content increased [8]. Consequently, pre-emulsified oil can affect the gelation properties of surimi gels, and the improvement effects may depend on the type and amount of oil. Oils with a high content of saturated fatty acids (stearic acid, palmitic acid, and lauric acid) are unfavorable to the texture properties, whereas oils with high contents of long-chain unsaturated fatty acids (oleic acid and linoleic acid) can effectively enhance the whiteness and water-holding capacity of surimi gels [11,14,15]. In addition, the high content of unsaturated fatty acids may result in the oil drop covered enough by protein and emulsified with protein to form a stable interfacial protein film, which prevents oil droplets from accumulating and decreases the range of oil distribution [16].

Safflower seed oil, known as “the king of linoleic acid”, is rich in conjugated linoleic acid, which can fully emulsified with protein and promote the even distribution of oil droplets [16,17]. Additionally, safflower seed oil has many excellent properties such as high freezing resistance, stable fragrance, and clear color; thus, it can be used as a food processing aid [18]. Meanwhile, *N. virgatus* is an important material for surimi-based products with high protein content and strong gel properties [8,19]. And China collected approximately 329.19 thousand tons of *N. virgatus* in 2019, showing great potential for resource development [20]. A preliminary study showed that three vegetable oils (soybean oil, corn oil and safflower seed oil) was screened out for their beneficial gel quality and flavor, and that the low content of pre-emulsified soybean oil with milk protein could effectively improve the quality and flavor of the *N. virgatus* surimi gel [21]. Additionally, the demand for low-fat and high-protein foods is rapidly growing, because an increasing number of consumers prefer low-fat healthy food [22]. Although some studies have investigated the effect of using oils on the preparation of surimi gels, there are no relevant publications about the effects of pre-emulsified safflower seed oil on the quality and flavor of surimi gels. In particular, we hypothesized that high-quality and unique flavors of surimi-based products can be produced by adding low pre-emulsified safflower seed oil content. Therefore, the objective of this study was to explore the mechanism of improvement in the quality and flavor of *N. virgatus* surimi gel with low contents of pre-emulsified safflower seed oil. The results of this study may help elucidate the interactions between external oils and proteins of surimi gels and to develop new and functional surimi-based products.

## 2. Materials and Methods

### 2.1. Materials and Reagents

Frozen *N. virgatus* surimi (AAA-grade, moisture content: 73.96±0.26%) was purchased from Fenghua Food Co., Ltd. (Beihai, China) and stored at -20 °C. Safflower seed oil containing more than 67.8% linoleic acid was purchased from COFCO Tayuan Honghua Co., Ltd. (Xinjiang, China). Whey protein isolate (WPI, Food grade) was purchased from Weifeng Biological Technology Co., Ltd. (Zhengzhou, China). Tissue-Tek O.C.T. was purchased from Sakura Finetek Japan Co., Ltd. (Tokyo, Japan). Tween 20 was purchased from Aladdin Biochemical Technology Co., Ltd. (Shanghai, China). Linoleic acid (≥ 95%, GC) and 2-methyl-3-heptanone (≥ 95%, GC) were purchased from Macklin Biochemical Co., Ltd. (Shanghai, China). The N-alkane mix was purchased from Tan-Mo Technology Co., Ltd. (Changzhou, China). Ethylenediaminetetraacetic acid (EDTA) was purchased from the Chemical Factory Co., Ltd. (Changzhou, China). The remaining chemical reagents used in the experiments were of analytical grade and purchased from the Chemical Reagent Factory (Guangzhou, China).

### 2.2. Preparation of Pre-emulsified Safflower Seed Oil

Pre-emulsified safflower seed oil was prepared according to a previously described method [13] with some modifications. WPI solution (2% protein, w/v) was prepared by mixing WPI (1.6 g) with deionized water (80 mL). Then, 16 mL of the WPI solution was mixed with safflower seed oil in different volumes (3, 6, 9, 12, and 15 mL). The mixtures were intermittently homogenized at 11,000 rpm for 5 min during 5 cycles using a homogenizer (T8DS25; IKA Laboratory Equipment, Germany) to obtain different pre-emulsified safflower seed oils. Each cycle was 1 minute for homogenization and 5 minutes for intermission.

### 2.3. Preparation of Surimi Gel

After thawing at 4 °C overnight, surimi was cut into small pieces. Salts (2.5 g/100 g) were added to surimi and chopped at a speed of 2,100 rpm for 2 min in a Stephan vertical vacuum cutter (Model UM 5; Stephan Machinery Co., Hameln, Germany). Subsequently, different pre-emulsified safflower seed oils were added to salted surimi pastes, and the final moisture content was adjusted to 80% with ice water, and chopped at the speed of 2,100 rpm for 3 min. The final content of safflower seed oil in surimi were 1, 2, 3, 4, and 5 mL per 100 g of surimi, respectively. During chopping, water was used as the cooling medium to maintain the sample temperature below 8 °C. After eliminating the air pockets, surimi was poured into a plastic casing (diameter, 2.5 cm) and both ends were sealed. Finally, the samples were incubated at 40 °C for 30 min, and then in a water bath at 90 °C for 20 min [1,13]. Then samples were immediately placed in ice water and stored at 4 °C. Surimi gel without pre-emulsified safflower seed oil was used as the control.

### 2.4. Whiteness Evaluation

After equilibrating at room temperature (25 °C) for 1 h, the whiteness of the samples was evaluated using a colorimeter (Model NS800; 3NH Technology Co., Ltd., Shenzhen, China). The parameters  $L^*$  (lightness),  $a^*$  (red/green), and  $b^*$  (yellow/blue) were measured in five replicates, and the average values were calculated. The whiteness was calculated using the following equation [14] (1):

$$\text{Whiteness} = 100 - \sqrt{(100 - L^*)^2 + a^{*2} + b^{*2}} \quad (1)$$

### 2.5. Texture Properties of Gel

Texture properties analysis (TPA) of gels were analyzed following the method [5] with some modifications. TPA measurement mode and gel strength measurement mode of texture analyzer (Model TA.XT plusC; STab. Micro System, Ltd., Surrey, Britain) were used with P/0.5S spherical plunger probes and P/0.5 flat plunger probes, respectively. After equilibrating at room temperature (25 °C) for 30 min, the plunger probe was pressed perpendicularly into the cross-section of the sample at a speed of 1.00 mm/s. Other test

parameters were as follows: pre-test and return speed, 1.00 mm/s; trigger force, 5 g; and compression strain, 50%. Subsequently, textural parameters (hardness, adhesiveness, springiness, cohesiveness, gumminess, chewiness, and resilience) were calculated using Texture Expert version 1.22. Each sample was measured in five replicates, and the average values were calculated.

#### 2.6. Water-Holding Capacity (WHC)

The WHC was measured following the method [1]. Samples were chopped into bite-sized pieces (5 × 5 × 5 mm) and weighed accurately ( $M_1$ ). Samples were wrapped with two filter papers and centrifuged (J-26sxp; Avanti, Beckman, USA) at 10,000 rpm for 10 min. After centrifugation, the samples were weighed again ( $M_2$ ). The WHC was calculated using the following equation and expressed as a percentage of the sample weight (2):

$$\text{WHC} / \% = \frac{M_2}{M_1} \times 100 \quad (2)$$

#### 2.7. Cooking Loss Rate (CLR)

CLR was measured according to the method [23]. Samples were cut into small cylinders and weighed accurately ( $G_1$ ). Subsequently, the samples were sealed with a cooking bag and water bath at 90 °C for 20 min. After cooking, the liquid on the gel surface was dried with filter paper and weighed again ( $G_2$ ). The CLR was calculated using the following equation and expressed as a percentage of the sample weight (3):

$$\text{CLR} / \% = \frac{G_1 - G_2}{G_1} \times 100 \quad (3)$$

#### 2.8. Moisture Distribution and Composition

Moisture distribution and composition in surimi gels were determined according to the method [5] with some modifications. Briefly, surimi gels were cut into small cylinders (40 × 15 × 15 mm) and placed in an NMR tube with a diameter of 40 mm. The transverse relaxation time ( $T_2$ ) was determined using the Carr-Purcell-Meiboom-Gill (CPMG) sequence of the NMR analyzer (NMI20-060H-I; Niumag Co., Ltd., Suzhou, China). Each peak area in integral spectrum of  $T_2$  was accumulated for calculation water distribution and composition in surimi gels.

#### 2.9. Light Microscopic Images Analysis

The distribution of oil droplets was analyzed according to the method [7] with some modifications. After dehydration with 30% sucrose, surimi gels were embedded and fixed with Tissue-Tek O.C.T. The samples were then cut into 20 μm thick slides using a microtome (Leica CM1950; Leica Microsystems Ins., Germany). Subsequently, the samples were dyed with 1% bromophenol blue solution (protein dye) and 0.1% Sudan IV dye solution (oil dye) for 1 min, and the excess dye was washed with distilled water. The distribution of oil droplets in surimi gels was observed using an Olympus microscope (CKX41; Olympus Optical Co., Ltd., Tokyo, Japan) at a magnification of 400×. ImageJ software was used to measure the droplet diameter and then draw the droplet diameter distribution image.

#### 2.10. Scanning Electron Microscopy (SEM)

The microstructure of the gel samples was analyzed using a SEM (7610F; Japan Electronics Co., Ltd., Tokyo, Japan). Samples were cut into 1 mm thick pieces, fixed with glutaraldehyde solution, washed with phosphate buffer, successively dehydrated with ethanol, replaced by tert-butanol, freeze-dried, and sputter coated with gold [24]. The microstructure of the samples was observed at an acceleration voltage of 8 kV and a magnification of 15,000×.

### 2.11. Fourier Transform Infrared Spectroscopy (FT-IR) of Surimi Gel

Surimi gels were freeze-dried and comminuted. The powder and potassium bromide (KBr) were mixed at a ratio of 1:100 and then compressed into a 1 mm pellet. For safflower seed oil, after compressing into a 1 mm pellet with KBr, a small drop of safflower seed oil was dropped on it for measurement. The transparent pellet was scanned by infrared spectra (SENSOR27; BRUKER Ltd., Ettlingen, Germany) with a scanning wavelength range of 4,000–600  $\text{cm}^{-1}$ , and samples were scanned 16 times at a resolution of 4  $\text{cm}^{-1}$  [25].

### 2.12. Lipid Oxidation of Surimi Gel

Thiobarbituric acid reaction substances (TBARS) were used to evaluate the degree of lipid oxidation in surimi gels. Malondialdehyde (MDA) content in the gels was determined according to the method [26,27] with some modifications. Surimi gels (5.0 g) were mixed with 7.5% trichloroacetic acid (50 mL) containing 0.1% EDTA and heated at 50 °C for 30 min. The mixtures were filtered using two layers of filter paper. The filtrate (2 mL) was mixed with 0.02 M thiobarbituric acid solution (2 mL) and heated at 90 °C for 30 min. After cooling, the absorbance was measured at 532 nm using a UV-Vis spectrophotometer (Cintra 1010; GBC Scientific Equipment Pty Ltd, Sydney, Australia). The MDA standard curve was formulated from 1,1,3,3-tetraethoxypropane, and TBARS content was expressed as the mass of MDA per kilogram of gel (mg/kg).

### 2.13. Lipoxygenase Activity of Surimi Gel

Lipoxygenase activity was determined according to a method [28] with some modifications. Briefly, 50 mM phosphate buffer solution (pH 7.4, 1.0 mM dithiothreitol, and 1.0 mM EDTA) was mixed with gel samples at a ratio of 4:1 (v/w), and then homogenized at 15,000 rpm in an ice bath for 1 min. After filtering through four layers of gauze, the mixtures were centrifuged at 10,000 g for 30 min. The supernatant was regarded as a lipoxygenase crude enzyme solution for further analysis. For the substrate solution, linoleic acid (140  $\mu\text{L}$ ) was mixed with Tween 20 (180  $\mu\text{L}$ ) and emulsified in 10 mL of deoxygenated redistilled water. The pH of the mixtures was adjusted to 9.0, with 2 M NaOH, and diluted with deoxygenated redistilled water to 50 mL. The activity of lipoxygenase was determined by measuring the increase in the absorbance of the substrate solution at a wavelength of 234 nm using a UV-Vis spectrophotometer (Cintra 1010; GBC Scientific Equipment Pty Ltd, Sydney, Australia) at room temperature (25 °C). A total of 0.1 mL of enzyme solution was added to a quartz cell containing 50 mM citric acid solution (2.9 mL, pH 5.5) and 0.2 mL linoleic acid substrate solution quickly, and the increase in absorbance was recorded within 1 min. The unit of lipoxygenase activity was U/g, where U was defined as an increase in absorbance of 0.001 per minute. The control consisted of 0.2 mL of linoleic acid substrate solution and 3.0 mL of citric acid buffer solution. Each sample was measured five times, and the average values were calculated.

### 2.14. Volatile Compounds of Surimi Gel

Volatile compounds in surimi gels were detected using a SH-Rxi-5Sil MS capillary column according to the method of headspace solid-phase microextraction-gas chromatography-mass spectrometry (HS-SPME-GC-MS) [29,30]. Ten grams of each sample was chopped and poured into a 20 mL headspace vial. After the samples were incubated at 60 °C for 10 min, the SPME (50/30  $\mu\text{m}$  DVB/Carbowaxen on PDMS; USA) was exposed for extracting volatile compounds at 60 °C for 30 min. Subsequently, the fiber was inserted into the GC injector port quickly and heated at 250 °C for 3 min. The heating procedure was set as follows: the original temperature was set at 50 °C and kept for 5 min, then increased to 100 °C at a speed of 5 °C /min and maintained for 2 min. Subsequently, the temperature was increased to 140 °C at a speed of 4 °C /min and maintained for 1 min, and then increased to 180 °C at the same speed. The temperature were maintained at 180 °C for 2 min, and then, the temperature was increased to 250 °C at a speed of 5 °C /min and maintained for 5 min. Helium was supplied as a carrier gas at a flow rate of 1.5 mL/min in splitless mode. The mass spectrometer parameters were set as follows: ion

source temperature, 230 °C; ionization energy, 70 eV; acquisition mode, full scanning mode; and data collection over the m/z range of 35–550 amu. Qualitative analysis was performed using a computer to search for each compound and match it with the NIST 14 library database. When the matching degree was more than 80 (maximum value 100), the compounds were regarded as identified. Simultaneously, under the same chromatographic conditions, the n-alkane mix was used to analyze the retention index (RI) of the matched volatile compounds. The specific calculation formula is as follows: (4). In the equation, n is the number of carbon atoms of the tested volatile compound,  $t_x$  is the retention time of the tested volatile compound,  $t_n$  is the retention time of n-alkane with the same number of carbon atoms as the tested volatile compound, and  $t_{n+1}$  is the retention time of n-alkane with one more carbon atom than the volatile compounds. The absolute calibration factor of volatile compounds was set to 1.0.

Based on the results of MS and RI identification and using 2-methyl-3-heptanone as an internal standard and its mass concentration, the peak area of each volatile compound was compared with the peak area of the internal standard to analyze volatile compounds in surimi gels. (Set the absolute calibration factor of volatile compounds was set to be 1.0).

$$RI = 100 \times \left( \frac{t_x}{t_{n+1} - t_n} \right) + 100n \quad (4)$$

### 2.15. Statistical Analysis

All experiments were independently performed in triplicate with numerous different samples. Statistical analysis (ANOVA and Duncan's Multiple Range test) was performed using SPSS software (version 19.0; SPSS Inc., Chicago, IL, USA). All figures are expressed as the mean  $\pm$  standard deviation (SD).

## 3. Results and Discussion

### 3.1. Whiteness and Texture Properties Analysis of Surimi Gel

Whiteness is a significant indicator that reflects the color and quality of surimi gels and directly determines the preference of consumers [7,25]. The changes in whiteness directly reflect the changes in the three-dimensional gel network structure of surimi gels, which result from denaturation, aggregation, and cross-linking of myofibrillar proteins [15,24]. As shown in Table 1, increasing the content of safflower seed oil resulted in an increase of the whiteness of the *N. virgatus* surimi gel ( $P < 0.05$ ), which indicated that pre-emulsified safflower seed oil could affect interactions between protein molecules in surimi gels and change the gel network structure. When safflower seed oil was pre-emulsified with WPI, the surface of oil droplets formed an interfacial protein film for uniform distribution in gel matrix and even suspension on the surface of surimi gels, and thus led to the stronger light scattering effect and more light reflectance in surimi gels [15,26]. Therefore, pre-emulsified safflower seed oil can significantly enhance the whiteness of the *N. virgatus* surimi gel.

In the experiment, the gel strength was the maximum force value as the plunger probe was pressed down to 4 mm, and the rupture strength was the maximum force value as the plunger probe was pressed down to 10 mm. Both gel and rupture strength can reflect the gelling ability of surimi during heating, which mainly depends on the formation and stability of the three-dimensional gel network structure [10]. Compared with the control, the gel strength, rupture strength, hardness, adhesiveness, cohesiveness, and chewiness of surimi gels with pre-emulsified safflower seed oil were improved until the safflower seed oil content increased up to 2 mL per 100 g of surimi ( $P < 0.05$ ). This demonstrated that the low content of pre-emulsified safflower seed oil had positive effects on gel texture, while high contents were adverse for gel texture. These results agreed with those reported by Kang, Chen, and Ma [23], who found that low-fat frankfurter sausage with pre-emulsified soybean oils had stronger texture properties. It is known that there is a

linear relationship between the protein content and texture of surimi gels [10]. Myofibrillar proteins directly participate in the formation of the three-dimensional gel network structure of surimi gels. At the same moisture level, the increase in pre-emulsified safflower seed oil content leads to a corresponding decrease in myofibrillar protein content in surimi gels, which results in a loose network structure with weak gel strength and rupture strength [10]. However, WPI has a stronger emulsifying ability and penetrating ability than myofibrillar proteins. Thus, during the gelation process of surimi paste, myofibrillar protein is less likely to participate in emulsification with safflower seed oil and tends to form a three-dimensional gel network structure, which enhances the texture of surimi gels. Whey protein concentration contains a cathepsin inhibitor to inhibit the deterioration of myosin, and has shown to enhance the texture of goatfish surimi gels [31]. Therefore, appropriate contents of pre-emulsified safflower seed oil can effectively modify the texture of surimi gels. In this study, the gel containing 2 mL safflower seed oil per 100 g of surimi had the strongest texture properties.

**Table 1.** Effect of pre-emulsified safflower seed oil on whiteness and texture properties of the *Nemipterus virgatus* surimi gel.

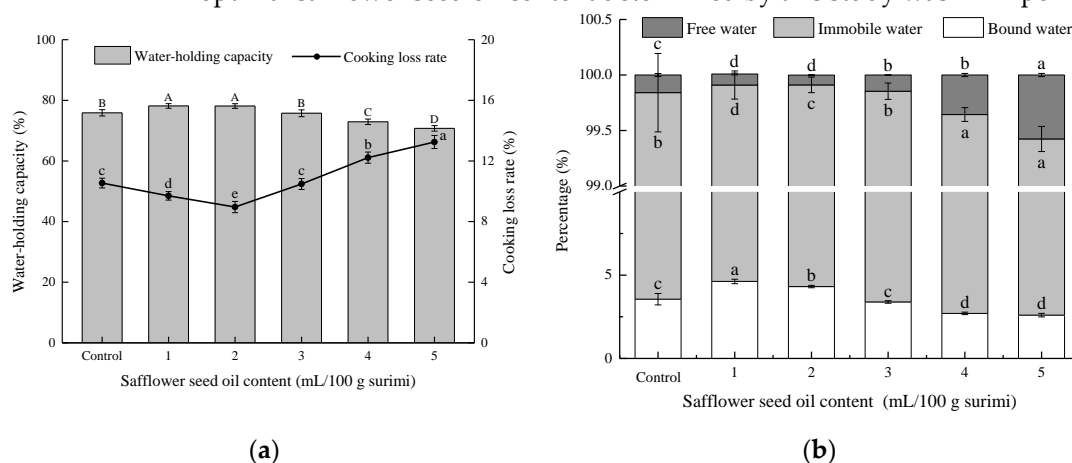
Properties	Control	Safflower seed oil content (mL/100 g surimi)				
		1	2	3	4	5
Whiteness	68.22±0.10 <sup>f</sup>	70.30±0.27 <sup>e</sup>	70.81±0.04 <sup>d</sup>	71.62±0.04 <sup>c</sup>	73.77±0.43 <sup>b</sup>	74.39±0.13 <sup>a</sup>
Gel strength (N)	4.890±0.078 <sup>b</sup>	5.067±0.055 <sup>a</sup>	5.134±0.087 <sup>a</sup>	4.906±0.084 <sup>b</sup>	4.645±0.084 <sup>c</sup>	4.301±0.087 <sup>d</sup>
Rupture strength (N)	13.280±0.098 <sup>c</sup>	13.812±0.056 <sup>b</sup>	14.178±0.134 <sup>a</sup>	13.173±0.116 <sup>c</sup>	12.475±0.281 <sup>d</sup>	11.476±0.276 <sup>e</sup>
Hardness (N)	9.982±0.123 <sup>b</sup>	10.065±0.116 <sup>b</sup>	10.645±0.228 <sup>a</sup>	9.589±0.107 <sup>c</sup>	9.272±0.054 <sup>d</sup>	8.952±0.142 <sup>e</sup>
Adhesiveness (g·s)	2.058±0.040 <sup>c</sup>	2.430±0.070 <sup>b</sup>	3.093±0.103 <sup>a</sup>	2.417±0.069 <sup>b</sup>	2.047±0.048 <sup>c</sup>	1.833±0.056 <sup>d</sup>
Springiness	0.606±0.004 <sup>b</sup>	0.593±0.004 <sup>c</sup>	0.581±0.005 <sup>d</sup>	0.611±0.004 <sup>b</sup>	0.622±0.004 <sup>a</sup>	0.624±0.005 <sup>a</sup>
Cohesiveness	0.589±0.006 <sup>ab</sup>	0.583±0.009 <sup>b</sup>	0.591±0.007 <sup>a</sup>	0.555±0.005 <sup>c</sup>	0.538±0.003 <sup>d</sup>	0.520±0.004 <sup>e</sup>
Gumminess	5.919±0.082 <sup>a</sup>	5.956±0.157 <sup>a</sup>	6.041±0.181 <sup>a</sup>	5.556±0.062 <sup>b</sup>	5.286±0.090 <sup>c</sup>	5.021±0.076 <sup>d</sup>
Chewiness	3.792±0.047 <sup>b</sup>	4.135±0.140 <sup>a</sup>	4.093±0.086 <sup>a</sup>	3.636±0.048 <sup>c</sup>	3.396±0.037 <sup>d</sup>	3.236±0.093 <sup>e</sup>
Resilience	0.221±0.005 <sup>d</sup>	0.224±0.004 <sup>d</sup>	0.222±0.006 <sup>d</sup>	0.238±0.007 <sup>c</sup>	0.258±0.003 <sup>b</sup>	0.268±0.002 <sup>a</sup>

Note: The data are expressed in the form of mean ± standard deviations (n=5). Different letters within the same row indicate significant differences ( $P < 0.05$ ) between mean values.

### 3.2. WHC and CLR Analysis of Surimi Gel

During the gelation process of surimi paste, myofibrillar proteins are heat-induced and form a three-dimensional gel network structure to trap free water in the gel matrix and to make surimi gels possessing WHC [15,19,24]. Similarly, the CLR is the percentage of the quality of water, oil, and other substances that easily leak out during the cooking process, accounting for the quality of surimi gels [32]. The WHC and CLR are important quality parameters for evaluating the stability of surimi gels, which reflects the ability of the three-dimensional gel network structure to retain water. High WHC and low CLR indicate that the gels can trap large quantities of water. The addition of safflower seed oil resulted in a decrease in the WHC and an increase in the CLR of surimi gels ( $P < 0.05$ ) (Fig. A1). However, the WHC of surimi gels with pre-emulsified safflower seed oil initially increased and then decreased with increasing oil content. The WHC values were the highest at 2 mL safflower oil per 100 g of surimi (Fig. 1a). Similarly, the CLR initially decreased and then increased as the content of safflower seed oil increased. In this case, the differences in the WHC and CLR of gels with the pre-emulsified safflower seed oil suggested that pre-emulsification could change the interaction between the oil droplets and proteins, thus affecting the formation of the three-dimensional gel network structure. Similar results were obtained by Zhou et al. [14], who found that silver carp surimi gels with pre-emulsified lard/camellia seed oils had a higher WHC than those with the oils without pre-emulsification. Song et al. [21] also found that *N. virgatus* surimi gel with pre-emulsified soybean oil could trap more water and thus had a higher WHC.

Pre-emulsification can form an interfacial protein film on the surface of the oil droplets. The different contents of pre-emulsified safflower seed oil will produce different emulsifying effects, resulting in different WHC and CLR of gels. These differences may be related to the filling properties, size, and distribution of oil droplets. The low contents of pre-emulsified safflower seed oil shows a stronger interfacial protein film on the oil droplet surface to hydrate with water molecules and fill in the gel matrix. This effect results in more water being wrapped in the gel matrix, which enhances its physical stability and binding ability. In addition, low contents of pre-emulsified oil can also form smaller oil droplets and distribute more evenly in the gel matrix [7]. These combined effects led to an increase in the WHC and a decrease in the CLR of surimi gels ( $P < 0.05$ ). In contrast, the high content of pre-emulsified oil can interfere with the interaction between protein molecules by increasing the distances between protein molecules, leading to gels with a loose and uneven three-dimensional gel network structure [7,33]. In addition, excessive safflower seed oil may occupy the void spaces of water molecules in the gel matrix and prevent water migration from the gel network, leading to a decrease in the WHC of surimi gels [1]. These results indicate that the low-content pre-emulsified safflower seed oil is beneficial for the formation of the three-dimensional network structure of surimi gels. The optimal safflower seed oil content determined by this study was 2 mL per 100 g of surimi.



**Figure 1.** Effect of pre-emulsified safflower seed oil on the WHC, CLR (a) and moisture content (b) of the *N. virgatus* surimi gel.

### 3.3. Moisture Distribution and Composition

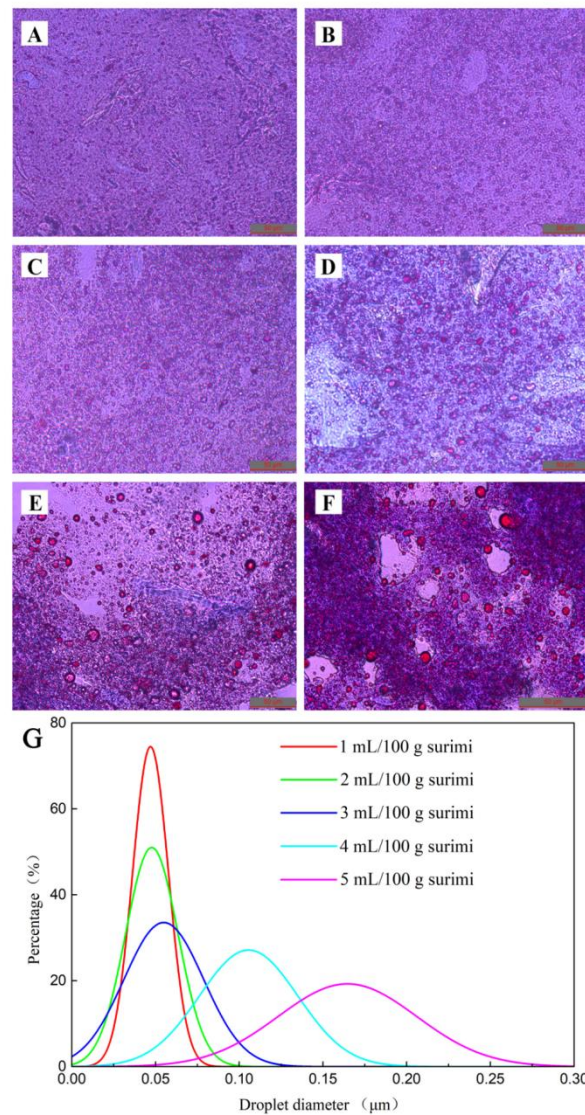
LF-NMR is the most direct and effective method to determine the moisture distribution and composition of surimi gels [32]. The moisture state in gels directly affects the WHC and further determines the quality and stability of surimi gels. Immobilized water of surimi gels is the main form of water and depends on the change in the gel network structure [32]. In addition, immobilized water is an important indicator that reflects the WHC of surimi gels. As shown in the Fig. 1b, with the increase in safflower seed oil content, the free water content increased ( $P < 0.05$ ) and the bound water content decreased ( $P < 0.05$ ). However, compared with the control, the gels containing the low contents of pre-emulsified safflower seed oil exhibited lower contents of free water ( $P < 0.05$ ) and higher contents of bound water ( $P < 0.05$ ). The low content of pre-emulsified oil reduced the damage to the network structure due to small oil droplets and uniform distributions in the gel matrix [7]. Additionally, the polar groups on the surface of WPI contain a hydrophilic effect, permitting that free water and immobilized water are tightly combined with the protein and then transformed into bound water, which increases the WHC of surimi gels. However, high oil content increased the distances between protein molecules, which damages the density and uniformity of the network structure, and occupies the void spaces of water molecules [1]. This increases the mobility of immobilized and bound water, permitting that they detach from the tissue structure and transform into free water, which decreased the WHC of surimi gels. Thus, safflower seed oil influenced the moisture distribution during the gelatinization of surimi paste, while the low content of pre-emulsified



safflower seed oil can reinforce immobilized water in surimi gels. The results confirmed that the low content of pre-emulsified safflower seed oil is beneficial for retaining water in surimi gels. It has also been reported that a large amount of water molecules are restricted in the gel network, and thus, the WHC of gels increases with an increase in the immobilized water content [34-36].

#### 3.4. Oil Droplet Diameter Size Distribution

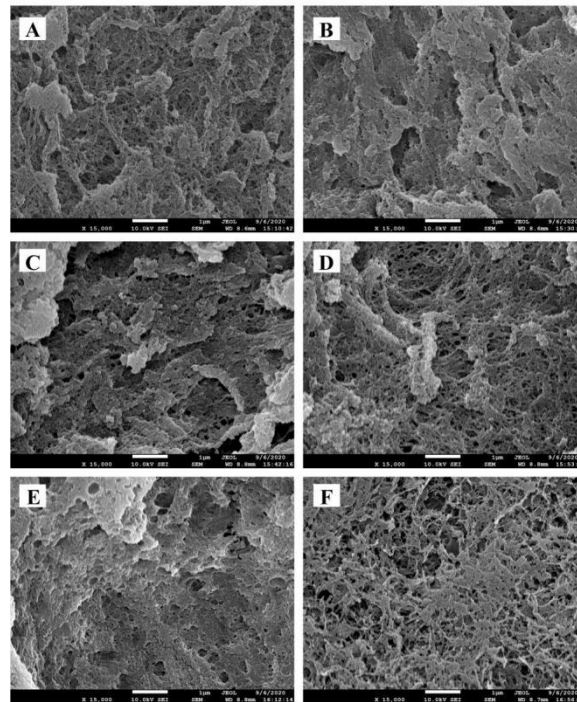
To identify the distribution and aggregation of oil droplets in surimi gels, optical microscope image analysis was performed. The surface of the *N. virgatus* surimi gel was relatively smooth, and oil droplets were rarely observed (Fig. 2A). After adding pre-emulsified safflower seed oil, obvious traces of oil droplets were observed in the surimi gels. When the content of safflower seed oil was not higher than 2 mL per 100 g of surimi, the small oil droplets were evenly distributed in the network structure and embedded in the gel matrix (Fig. 2B and 2C). Furthermore, the diameter of oil droplets was mainly in the range of 0.25–0.75  $\mu\text{m}$  (Fig. 2G). This result further showed that the low-content pre-emulsified safflower seed oil with WPI could be evenly distributed in the network structure of surimi gels in the form of small particles. Similarly, pre-emulsified peanut oil is evenly distributed in the gel matrix [7]. However, with the increase in safflower seed oil content, the distribution of oil droplets became increasingly uneven, and the average diameter of the oil droplets increased. When the content of safflower seed oil increased to 5 mL per 100 g of surimi, oil droplets with a diameter higher than 0.10  $\mu\text{m}$  accumulated in the gel matrix (Fig. 2F). When the number of oil droplets is excessive, they merge into larger oil droplets to decrease the interface energy, which eventually interferes with the formation of a gel network structure during heating [7,37]. And the formed large oil droplets further promotes the accumulation of oil droplets. Gani and Benjakul [13] also proved that large oil droplets could interfere with protein interactions by increasing the distance between protein molecules. Based on these reports, we hypothesized that the low content of pre-emulsified safflower seed oil was evenly distributed in the gel matrix, which reduced the interference of oils on myofibrillar protein, and further enhanced the physical stability of surimi gels.



**Figure 2.** Effects of pre-emulsified safflower seed oil on the oil droplet distribution ( $\times 400$ ) of the *N. virgatus* surimi gel. (A): control; (B-F): the surimi gels containing 1, 2, 3, 4 and 5 mL safflower seed oil per 100 g surimi, respectively; (G): pre-emulsified safflower seed oil droplet diameter distribution image.

### 3.5. Microstructure of Surimi Gel

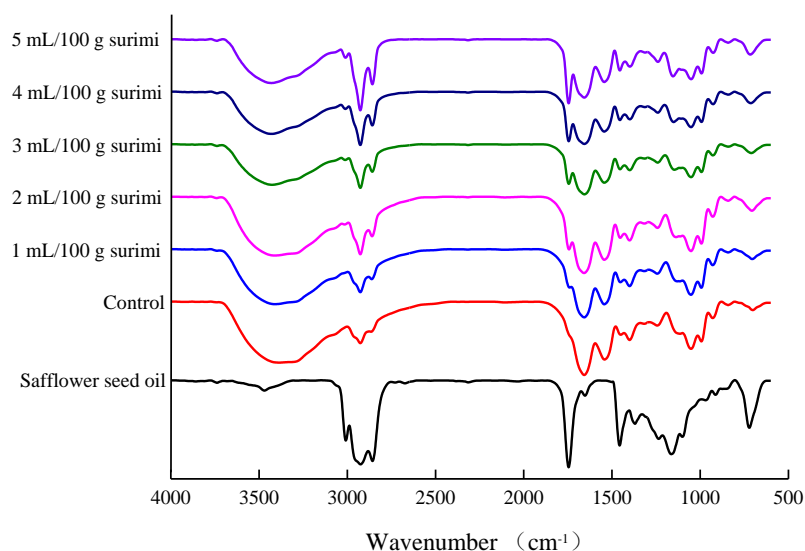
The microstructure of the *N. virgatus* surimi gel was determined using SEM (Fig. 3). Compared with the control (Fig. 3A), the surimi gels with low contents of pre-emulsified safflower seed oil show a network structure with fewer holes and smaller size (Fig. 3B and 3C). This may be associated with the uniform distribution and reduced interference of small oil droplets in the gel matrix. Moreover, the pre-emulsified safflower seed oil may also play a role, as filler particles occupy the void spaces in the three-dimensional gel network structure of surimi gels [9]. This result was consistent with the stronger texture, higher WHC, and lower CLR of surimi gels containing low-content pre-emulsified safflower seed oil (Table 1 and Fig. 1A). However, as the content of safflower seed oil increased from 3 to 5 mL per 100 g of surimi, the microstructure became loose with large holes (Fig. 3D-F). These results were similar to the microstructure of surimi gels with camellia tea oil, as observed by Zhou et al. [1]. Excessive oil droplets accumulate together to form large oil droplets, which negatively impacts protein intermolecular interactions by increasing the distance between protein molecules [1,13]. Surimi gels containing high contents of pre-emulsified safflower seed oil exhibited a loose network structure with a weak texture and low WHC. The results further proved that the low-content pre-emulsified safflower seed oil was beneficial to the formation of the dense gel network structure.



**Figure 3.** Effects of pre-emulsified safflower seed oil on the SEM ( $\times 15,000$ ) of the *N. virgatus* surimi gel. (A): control; (B-F): the surimi gels containing 1, 2, 3, 4 and 5 mL safflower seed oil per 100 g surimi, respectively.

### 3.6. FT-IR Spectral Analysis of Safflower Seed Oil and Surimi Gel

FT-IR spectroscopy is an effective method for determining the conformational changes of proteins. The FT-IR spectra of safflower seed oil and *N. virgatus* surimi gel within the range of  $4,000\text{--}600\text{ cm}^{-1}$  are shown in Fig. 4. The control and surimi gels with different contents of pre-emulsified safflower seed oil had similar characteristic adsorption bands. However, compared with the control, the surimi gels with pre-emulsified safflower seed oil presented distinct strong adsorption peaks at  $3008\text{ cm}^{-1}$  and  $1745\text{ cm}^{-1}$ , attributed to the changes in the stretching vibration of  $=\text{C-H}$  and stretching vibration of  $\text{C=O}$  in safflower seed oil [24,38]. The changes in these new absorption peaks are consistent with the FT-IR spectra of safflower seed oil. The amide I band is a widely used region for analyzing the changes in the secondary structure of proteins. This band includes the wavelength ranges of  $1650\text{--}1660$ ,  $1665\text{--}1680$ ,  $1660\text{--}1695$ , and  $1660\text{--}1665\text{ cm}^{-1}$ , which originate from the structures of  $\alpha$ -helices,  $\beta$ -sheets,  $\beta$ -turns, and random coils, respectively [24]. However, with the increase in safflower seed oil content, there were no changes in the amide A, amide I, amide II, amide III, and other feature absorption peaks of protein structure in surimi gels, which further indicated that there was no significant interaction between the pre-emulsified safflower seed oil and the myofibrillar proteins during the gelatinization process of surimi. The results were consistent with previous research reporting that the oils had no effect on protein, but acted as filler particles to occupy the void spaces in gels [1,14]. However, some studies have reported that oil can change the conformation and local chemical environment of proteins by inducing the exposure of hydrophobic groups in protein molecules [5]. For example, the accumulation of fish oil has been reported to hinder the rearrangement and unfolding of proteins and affect the hydration of proteins [24,37]. This difference may be related to the type and amount of oil added. In this study, the pre-emulsified safflower seed oil acted as filler particles to occupy the void spaces of surimi gels.

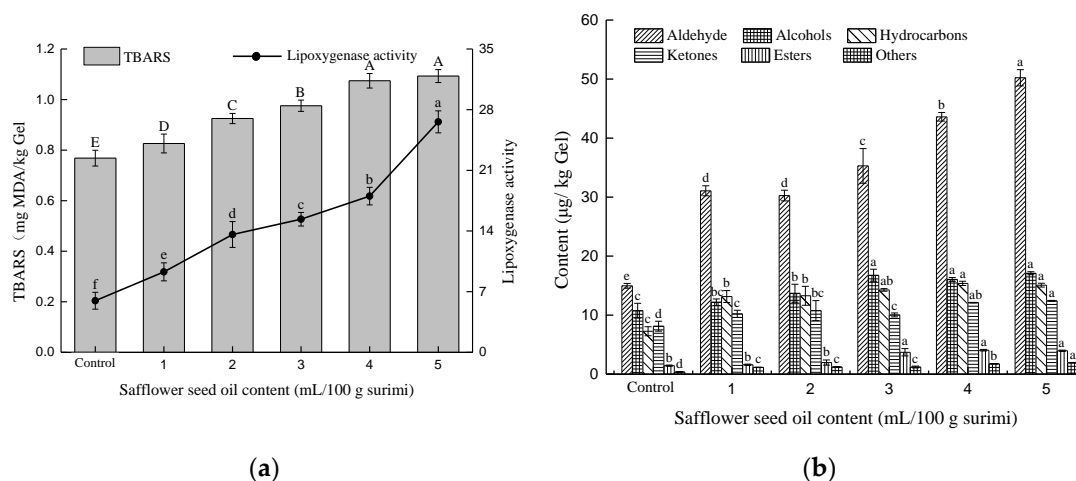


**Figure 4.** FT-IR spectra of safflower seed oil and the *N. virgatus* surimi gel.

### 3.7. Lipid Oxidation and Lipoxygenase Activity of Surimi Gel

Malondialdehyde (MDA) is the main secondary oxidation product of oil and can be used to evaluate the degree of oil oxidation and rancidity [26]. The changes in MDA content are positively correlated with the degree of oil oxidation. The MDA content increases with the increase in oil oxidizability, which leads to an increase in the TBARS content. Although pre-emulsification can form an interfacial protein film on the surface of oil droplets, safflower seed oil is rich in unsaturated fatty acids, and its linoleic acid content is more than 67.8%. Thus, it is easily oxidized to produce MDA during heating. As shown in Fig. 5a, the TBARS content of the *N. virgatus* surimi gel increased ( $P < 0.05$ ) with an increase in safflower seed oil content. Aheto et al. [27] reported that the maximum TBARS content was 4.75 mg MDA/kg in dried pork products. Berruga, Vergar, and Gallego [39] suggested that the acceptable levels of TBARS contents were 4.2–7.5 mg MDA/kg in meat products. In this experiment, the TBARS content in the *N. virgatus* surimi gel containing pre-emulsified safflower seed oil was less than 1.2 mg/kg gel (Fig. 5a), which is far below the acceptable range. Therefore, pre-emulsified safflower seed oil can be used as a processing aid to enhance the gel quality of surimi gels, but necessary antioxidant measures should be considered to improve the storage stability of surimi gels.

Lipoxygenase is a class of non-heme iron-containing enzymes that can specifically catalyze polyunsaturated fatty acids to produce a series of fatty acid hydroperoxides [28]. These hydroperoxides will further decompose to form small molecular compounds, such as alcohols, aldehydes, ketones, and their alcoholic counterparts [40]. Some small-molecule compounds contribute to volatile flavor components in food systems. In addition, the activity of lipoxygenase is positively correlated with a better flavor of the surimi gels. The effects of pre-emulsified safflower seed oil on the lipoxygenase activity of *N. virgatus* surimi gel is shown in Fig. 5a. With the increase in safflower seed oil content, the activity of lipoxygenase becomes stronger, which indicates that pre-emulsified safflower seed oil could change the flavor of surimi gels. The safflower seed oil in the gel matrix may activate certain enzymes, such as lipoxygenase, lipase, and peroxidase, which attack unsaturated fatty acids and produce hydroperoxides and volatiles.



**Figure 5.** Effect of pre-emulsified safflower seed oil on the TBARS content, lipoxygenase activity (a), composition and content in volatile compounds (b) of the *N. virgatus* surimi gel.

### 3.8. Volatile Compounds of Surimi Gel

The volatile components of the gels were analyzed using by HS-SPMEGC-MS. The *N. virgatus* surimi gel contained 48 volatile compounds. The surimi gels with 1, 2, 3, 4, and 5 mL safflower seed oil per 100 g of surimi contained 56, 57, 62, 60, and 61 types of volatile compounds, respectively (Table S1). These changes indicated that the pre-emulsified safflower seed oil significantly increased the number of volatile components in surimi gels. Safflower seed oil is rich in unsaturated linoleic acid, which is easily oxidized and decomposed to form small molecular compounds during heating. Thus, aldehydes, alcohols, ketones, hydrocarbons, and esters were dominant in the volatile compounds of gels, which synergistically gave a unique flavor to surimi-based products.

As shown in the Fig. 5b, the most abundant volatile compounds in the *N. virgatus* surimi gel were aldehydes. The aldehyde content was 14.94 µg/kg, which represented a 34.95% of the total volatiles in the control. After adding pre-emulsified safflower seed oil, the changes in aldehydes were the most obvious ( $P < 0.05$ ), and its content increased as the content of safflower seed oil increased. Among the aldehydes, hexanal, heptanal, benzaldehyde, octanal, nonanal, and decanal were detected at high concentrations. These aldehydes have a low threshold with a strong pungent odor. However, as the number of carbon atoms increases, the pungent odor becomes weak and gradually presents a pleasant odor, originating from a typical unsaturated fatty acid oxidation product that is a key component of the fish flavor [41].

Alcohols, which can present brisk and soft odors, are an important part of the flavor in the *N. virgatus* surimi gel. Eight types of alcohol compounds, including 1-octen-3-ol, 2-ethyl-1-hexanol, 3-cyclohexene-1-ethanol, and phenethyl alcohol, were detected. The abundance of these alcohols was 10.76 µg/kg, which represented a 25.00% of the total volatiles in the control. 1-octen-3-ol was detected at the highest concentrations among the alcohols ( $P < 0.05$ ), and its threshold was low with the smell of mushroom and soil mold. Thus, it is one of the volatile compounds with the highest flavor activity in the *N. virgatus* surimi gel. In addition, it is mainly produced by the action of lipoxygenase on linoleic acid hydroperoxide decomposition [42]. The content of 1-octen-3-ol increased as the content of safflower seed oil increased.

The most common compounds in the *N. virgatus* surimi gel were hydrocarbons formed by the oxidation of fatty acids. A total of 23 distinct types of hydrocarbons were detected. Although the hydrocarbon compounds detected were tasteless with high threshold [29], hydrocarbons, especially unsaturated hydrocarbons can be oxidized to produce flavor compounds such as alcohols, aldehydes ketones and other flavor compounds. Therefore, hydrocarbons also have an indispensable contribution to the flavor of surimi gels.

Ketones are carbon-based compounds with a low flavor threshold value, which can produce a native and rich fragrance smell, and thus have a significant contribution to the flavor of gels [43]. In this study, 2,5-octanedione was the main ketone detected in the control (5.16  $\mu\text{g}/\text{kg}$ ). This compound had a fruity and milky aroma. The content of 2,5-octanedione increased as the content of safflower seed oil increased ( $P < 0.05$ ).

Only a few types of esters were found in low abundance in the *N. virgatus* surimi gel. Most of the detected esters were high molecular weight esters. As the molecular weight of esters increases, the fruity fragrance smell is lower, and the threshold will be higher [43]. Therefore, esters contributed little to the flavor of the *N. virgatus* gel. Other types of compounds detected were mainly nitrogen-containing compounds, which are small molecule compounds resulting from the decomposition of amino acids and proteins. Since only a few types at a low concentrations were found, we state that they barely contributed to the flavor of the gels.

The overall analysis indicated that aldehydes, alcohols, and ketones were the main components of flavor, and that hydrocarbons were important precursor compounds for the formation of these flavor substances. Therefore, after adding pre-emulsified safflower seed oil, the types and contents of volatile components, including aldehydes, alcohols, hydrocarbons, and ketones, increased in surimi gels ( $P < 0.05$ ), which synergistically contributed to the unique flavor of the *N. virgatus* surimi gel, especially when the safflower seed oil content reached 2 mL per 100 g of surimi or more.

## 5. Conclusions

The addition of pre-emulsified safflower seed oil had an obvious effect on the quality and flavor of the *N. virgatus* surimi gel. The low contents of pre-emulsified safflower seed oil were evenly distributed in the gel matrix as small oil droplets, and the gels exhibited a dense three-dimensional gel network structure with high WHC. Moreover, pre-emulsified safflower seed oil in the gel matrix could activate lipoxygenase, resulting in gels with pre-emulsified oils producing a large number of volatile components. Among them, aldehydes and hydrocarbons were the most common compounds, and alcohols and ketones were an important part of the flavor. The results reveal insight into the enhancement mechanism of surimi gels with low contents of pre-emulsified safflower seed oil. There was no significant interaction between the pre-emulsified safflower seed oil and the myofibrillar proteins, but the low-content pre-emulsified safflower seed oil acted as filler particles to occupy the void spaces and gave a unique flavor to gels. The present results confirm our hypothesis that high-quality and unique flavors of surimi-based products can be produced by adding low pre-emulsified safflower seed oil content. These findings are especially relevant to the current growing interest in the development of low-fat and high-protein diets.

**Abbreviations:** water-holding capacity (WHC), cooking loss rate (CLR), whey protein isolate (WPI), ethylenediaminetetraacetic acid (EDTA), low-field nuclear magnetic resonance (LF-NMR), Carr-Purcell-Meiboom-Gill (CPMG), scanning electron microscopy (SEM), Fourier transform infrared spectroscopy (FT-IR), thiobarbituric acid reaction substances (TBARS), malondialdehyde (MDA), headspace solid-phase microextraction-gas chromatography-mass spectrometry (HS-SPMEGC-MS), standard deviation (SD).

**Author Contributions:** Conceptualization, methodology, Software, Formal analysis, Investigation, Resources, Data Curation, Writing, Validation, Supervision: C.S., Y.L., P.H., M.L. and C.Z.; Project administration and Funding acquisition: P.H. All authors have read and agreed to the published version of the manuscript.

**Funding:** This research was funded by the Innovation and Development Project about Marine Economy Demonstration of Zhanjiang City, grant number XM-202008-01B1, the Southern Marine Science and Engineering Guangdong Laboratory (Zhanjiang), grant number ZJW-2019-07 and the the Innovation Team Construction Project of Modern Agricultural Industry Technology System in Guangdong Province, grant number 2021KJ150.

**Acknowledgments:** We gratefully thanked Professor Zhong-ji QIAN for scientific guidance to this paper.

**Institutional Review Board Statement:** Not applicable.

**Informed Consent Statement:** Not applicable.

**Data Availability Statement:** Not applicable.

**Conflicts of Interest:** The authors declare no conflict of interest.

## References

- Zhou, X.; Jiang, S.; Zhao, D.; Zhang, J.; Gu, S.; Pan, Z.; Ding, Y. Changes in physicochemical properties and protein structure of surimi enhanced with camellia tea oil. *LWT Food Sci. Technol.* 2017, 84, 562-571. [CrossRef]
- Wijayanti, I.; Singh, A.; Benjakul, S.; Sookchoo, P. Textural, sensory, and chemical characteristic of Threadfin bream (*Nemipterus sp.*) surimi gel fortified with bio-calcium from bone of asian sea bass (*Lates calcarifer*). *Foods*. 2021 10(5), 976.
- Petcharat, T.; Benjakul, S. Effect of gellan incorporation on gel properties of bigeye snapper surimi. *Food Hydrocoll.* 2018, 77, 746-753.
- Singh, A.; Benjakul, S.; Prodpran T.; Nuthong, P. Effect of psyllium (*Plantago ovata* Forsk.) husk on characteristics, rheological and textural properties of Threadfin bream surimi gel. *Foods*. 2021 10(6), 1181.
- Jiao, X.; Cao, H.; Fan, D.; Huang, J.; Zhao, J.; Yan, B.; Zhou, W.; Zhang, W.; Ye, W.; Zhang, H. Effects of fish oil incorporation on the gelling properties of silver carp surimi gel subjected to microwave heating combined with conduction heating treatment. *Food Hydrocoll.* 2019, 94, 164-173. [CrossRef]
- Choi, Y.; Choi, J.; Han, D.; Kim, H.; Lee, M.; Kim, H.; Lee, J.; Chung, H.; Kim, C. Optimization of replacing pork back fat with grape seed oil and rice bran fiber for reduced-fat meat emulsion systems. *Meat Sci.* 2010, 84(1), 212-218.
- Liu, X.; Ji, L.; Zhang, T.; Xue, Y.; Xue, C. Effects of pre-emulsification by three food-grade emulsifiers on the properties of emulsified surimi sausage. *J. Food Eng.* 2019, 247, 30-37. [CrossRef]
- Fang, Q.; Shi, L.; Ren, Z.; Hao, G.; Chen, J.; Wen, W. Effects of emulsified lard and TGase on gel properties of threadfin bream (*Nemipterus virgatus*) surimi. *LWT Food Sci. Technol.* 2021, 146, 111513. [CrossRef]
- Gani, A.; Benjakul, S.; Nuthong, P. Effect of virgin coconut oil on properties of surimi gel. *J. Food Sci. Tech.* 2018. 55(2): 496-505. [CrossRef]
- Chang, T.; Wang, C.; Wang, X.; Shi, L.; Yang, H.; Cui, M. Effects of soybean oil, moisture and setting on the textural and color properties of surimi gels. *J. Food Quality.* 2015, 38(1), 53-59. [CrossRef]
- Mi, H.; Wang, C.; Zhao, B.; Yi, S.; Li, J.; Huang, J.; Ding, H.; Wang, Q.; Xiong, B. Effects of soybean, flaxseed and perilla seed oils on the quality of grass carp (*Ctenopharyngodon idellus*) surimi gels. *Science and Technology of Food Industry*, 2017, 38(18), 60-64+73. (in Chinese) [CrossRef]
- Gani, A.; Benjakul, S. Effect of antioxidants in combination of VOC nanoemulsion on gel properties and storage stability of refrigerated sardine surimi gel. *Int. J. Food Sci. Tech.* 2020, 55(6), 2451-2461.
- Gani, A.; Benjakul, S. Impact of virgin coconut oil nanoemulsion on properties of croaker surimi gel. *Food Hydrocoll.* 2018, 82, 34-44. [CrossRef]
- Zhou, X.; Chen, H.; Lyu, F.; Lin, H.; Zhang, Q.; Ding, Y. Physicochemical properties and microstructure of fish myofibrillar protein-lipid composite gels: Effects of fat type and concentration. *Food Hydrocoll.* 2019, 90, 433-442. [CrossRef]
- Shi, L.; Wang, X.; Chang, T.; Wang, C.; Yang, H.; Cui, M. (2014). Effects of vegetable oils on gel properties of surimi gels. *LWT Food Sci. Technol.* 2014, 57(2), 586-593. [CrossRef]
- Zheng, J.; Sun, D.; Li, X.; Liu, D.; Li, C.; Zheng, Y.; Yue, X.; Shao, J. The effect of fatty acid chain length and saturation on the emulsification properties of pork myofibrillar proteins. *LWT Food Sci. Technol.* 2021, 139, 110242. [CrossRef]
- Jeong, E.; Yang, H.; Kim, J.; Lee, K. Safflower seed oil and its active compound acacetin inhibit UVB-induced skin photoaging. *J. Micro. Bio.* 2020, 30(10), 1567-1573.
- Lan, X.; Qiang, W.; Yang, Y.; Gao, T.; Guo, J.; Du, L.; Noman, M.; Li, Y.; Li, J.; Li, H.; Li, X.; Yang, J. Physicochemical stability of safflower oil body emulsions during food processing. *LWT Food Sci. Technol.* 2020, 132, 109838.
- Chen, H.; Zou, Y.; Zhou, A.; Xiao, J.; Benjakul, S. Insight into the effect of ice addition on the gel properties of *Nemipterus virgatus* surimi gel combined with water migration. *Foods*. 2021, 10(8), 1815. [CrossRef]
- Ministry of Agriculture. (2020). China fishery statistical yearbook. Beijing, China: Agr. Press. (in Chinese)
- Song, C.; Hong, P.; Zhou, C.; Chen, A.; Feng, R. Effect of soybean oil and pre-emulsified soybean oil on the quality of *Nemipterus virgatus* surimi gel. *Food Sci.* 2021, 42(8), 90-97. (in Chinese) [CrossRef]
- Guan, T.; Liu, B.; Wang, R.; Huang, Y.; Luo, J.; Li, Y. The enhanced fatty acids flavor release for low-fat cheeses by carrier immobilized lipases on O/W Pickering emulsions. *Food Hydrocoll.* 2021 116, 106651.
- Kang, Z.; Chen, F.; Ma, H. Effect of pre-emulsified soy oil with soy protein isolate in frankfurters: A physical-chemical and Raman spectroscopy study. *LWT Food Sci. Technol.* 2016, 74, 465-471. [CrossRef]
- Feng, J.; Cao, A.; Cai, L.; Gong, L.; Wang, J.; Liu, Y.; Zhang, Y.; Li, J. Effects of partial substitution of NaCl on gel properties of fish myofibrillar protein during heating treatment mediated by microbial transglutaminase. *LWT Food Sci. Technol.* 2018 93, 1-8. [CrossRef]
- Alipour, H.; Rezaei, M.; Shabanpour, B.; Tabarsa, M. Effects of sulfated polysaccharides from green alga *Ulva intestinalis* on physicochemical properties and microstructure of silver carp surimi. *Food Hydrocoll.* 2018, 74, 87-96. [CrossRef]
- Pietrowski, B.; Tahergorabi, R.; Matak, K.; Tou, J.; Jaczynski, J. (2011). Chemical properties of surimi seafood nutrified with  $\omega$ -3 rich oils. *Food Chem.* 2011, 129, 912-919. [CrossRef]

27. Aheto, J.; Huang, X.; Tian, X.; Lv, R.; Dai, C.; Bonah, E.; Chang, X. Evaluation of lipid oxidation and volatile compounds of traditional dry-cured pork belly: The hyperspectral imaging and multi-gas-sensory approaches. *J. Food Process Eng.* 2020, 43(1), 1-10. [CrossRef]
28. Gao, Z.; Shen, P.; Lan, Y.; Cui, L.; Ohm, J.; Chen, B.; Rao, J. Effect of alkaline extraction pH on structure properties, solubility, and beany flavor of yellow pea protein isolate. *Food Res. Int.* 2020 131, 109045. [CrossRef]
29. Mohamed, H.; Man, Y.; Mustafa, S.; Manap, Y. (2012). Tentative identification of volatile flavor compounds in commercial Budu, a Malaysian fish sauce, using GC-MS. *Molecules.* 2012, 17(5), 5062-5080. [CrossRef]
30. Wang, Z.; Xu, Z.; Sun, L.; Dong, L.; Wang, Z.; Du, M. Dynamics of microbial communities, texture and flavor in Suan zuo yu during fermentation. *Food Chem.* 2020, 332, 127364.
31. Benjakul, S.; Yarnpakdee, S.; Visessanguan, W.; Phatcharat, S. Combination effects of whey protein concentrate and calcium chloride on the properties of goatfish surimi gel. *J. Texture Stud.* 2010, 41(3), 341-357.
32. Ma, X.; Yi, S.; Yu, Y.; Li, J.; Chen, J. Changes in gel properties and water properties of Nemipterus virgatus surimi gel induced by high-pressure processing. *LWT Food Sci. Technol.* 2015, 61(2), 377-384. [CrossRef]
33. Mourtzinou, I.; Kiosseoglou, V. Protein interactions in comminuted meat gels containing emulsified corn oil. *Food Chem.* 2005, 90(4), 699-704.
34. Diao, X.; Guan, H.; Zhao, X.; Diao, X.; Kong, B. Physicochemical and structural properties of composite gels prepared with myofibrillar protein and lard diacylglycerols. *Meat Sci.* 2016, 121, 333-341.
35. Xiong, G.; Han, M.; Kang, Z.; Zhao, Y.; Xu, X.; Zhu, Y. Evaluation of protein structural changes and water mobility in chicken liver paste batters prepared with plant oil substituting pork back-fat combined with pre-emulsification. *Food Chem.* 2016, 196, 388-395.
36. Zhao, X.; Han, G.; Su, Q.; Liu, H.; Liu, Q.; Kong, B. Influence of lard-based diacylglycerol on the rheological and physicochemical properties of thermally induced pork myofibrillar protein gels at different pH levels. *LWT Food Sci. Technol.* 2020, 117, 108708.
37. Yan, B.; Jiao, X.; Zhu, H.; Wang, Q.; Huang, J.; Zhao, J.; Cao, H.; Zhou, W.; Zhang, W.; Ye, W.; Zhang, H.; Fan, D. Chemical interactions involved in microwave heat-induced surimi gel fortified with fish oil and its formation mechanism. *Food Hydrocoll.* 2020, 105, 105779. [CrossRef]
38. Kobayashi, Y.; Mayer, S.; Park, J. FT-IR and Raman spectroscopies determine structural changes of tilapia fish protein isolate and surimi under different comminution conditions. *Food Chem.* 2017, 226(1), 156-164.
39. Berruga, M.; Vergar, H.; Gallego, L. Influence of packaging conditions on microbial and lipid oxidation in lamb meat. *Small Ruminant Res.* 2005, 57(2), 257-264.
40. Mandal, S.; Dahuja, A.; Kar, A.; Santha, I. In vitro kinetics of soybean lipoxygenase with combinatorial fatty substrates and its functional significance in off flavour development. *Food Chem.* 2014, 146, 394-403.
41. Dajanta, K.; Apichartsrangkoon, A.; Chukeatirote, E. Volatile profiles of thua nao, a Thai fermented soy product. *Food Chem.* 2010, 125(2), 464-470.
42. Giri, A.; Osako, K.; Ohshima, T. Identification and characterisation of headspace volatiles of fish miso, a Japanese fish meat based fermented paste, with special emphasis on effect of fish species and meat washing. *Food Chem.* 2009, 120(2), 621-631.
43. Zhao, Y.; Wang, Y.; Li, C.; Li, L.; Yang, X.; Wu, Y.; Chen, S.; Zhao, Y. Novel insight into physicochemical and flavor formation in naturally fermented tilapia sausage based on microbial metabolic network. *Food Res. Int.* 2021, 141, 110122.