

## Article

# Biodiversity Conservation of National Parks and Nature-protected Areas in West Africa: The Case of Kainji National Park, Nigeria

Xiao-lan Tang <sup>1,2,\*</sup> and John Adekunle Adesina <sup>1</sup>

<sup>1</sup> NFU Academy of Chinese Ecological Progress and Forestry Studies, Nanjing, 210037, P. R. China; xiaolant@njfu.edu.cn

<sup>2</sup> College of Landscape Architecture, Nanjing Forestry University, Nanjing, 210037, P. R. China; adesina-johnlloyd@gmail.com

\* Correspondence: xiaolant@njfu.edu.cn

**Abstract:** Due to rising global warming and climate change, biodiversity protection has become a critical ecological concern. The rich biodiversity zones are under threat and are deteriorating, necessitating national, regional, and provincial efforts to safeguard these natural areas. The effective conservation of National Parks and Nature-protected Areas helps to improve biodiversity conservation, forest, and urban air quality. The continuous encroachment and abuse of these protected areas have degraded the ecosystem over time. While exploring the geophysical ecology and biodiversity conservation of these areas in West Africa, Kainji National Park was selected for this study because of its notable location, naturalness, rich habitat diversity, topographic uniqueness, and landmass. The conservation of national parks and nature-protected areas is a cornerstone of biodiversity conservation globally. This study is aimed at the target of United Nations Sustainable Development Goal 13, 2030- *Climate Action*, targeted at taking urgent action towards combating climate change and its impacts. The study captures both flora and fauna that are dominant in the study area. The 15 identified tree species were selected from over 30 species with 563,500,000 (an average of 3,700,000 in each sample frame) trees for every tree species/type with a total of 63% tree green canopy cover. The study areas divided into three zones were randomly sampled within a stratum of 25x25km frames divided into 150 sample frames for proper analyses using the i-Tree Eco v6.0.23. The following microclimatic data were captured and analyzed; photosynthetically active radiation, rain/precipitation, temperature, transpiration, evaporation, water intercepted by trees, avoided a runoff by trees, potential evaporation by trees, isoprene and monoterpene by trees. This study also further discusses the tree benefits of a green, low carbon, and sustainable environment within the context of biodiversity conservation considering carbon storage, carbon sequestration, hydrology effects, pollution removal, oxygen production, and volatile organic compounds (VOCs). There is a quick need for remotely-sensed information about the protected areas at regular intervals and government policies must be strict against illegal poaching, logging activities and other hazardous human impacts.

**Keywords:** carbon storage & sequestration; climate change; habitat diversity; Kainji national park; protected areas; air quality

## 1. Introduction

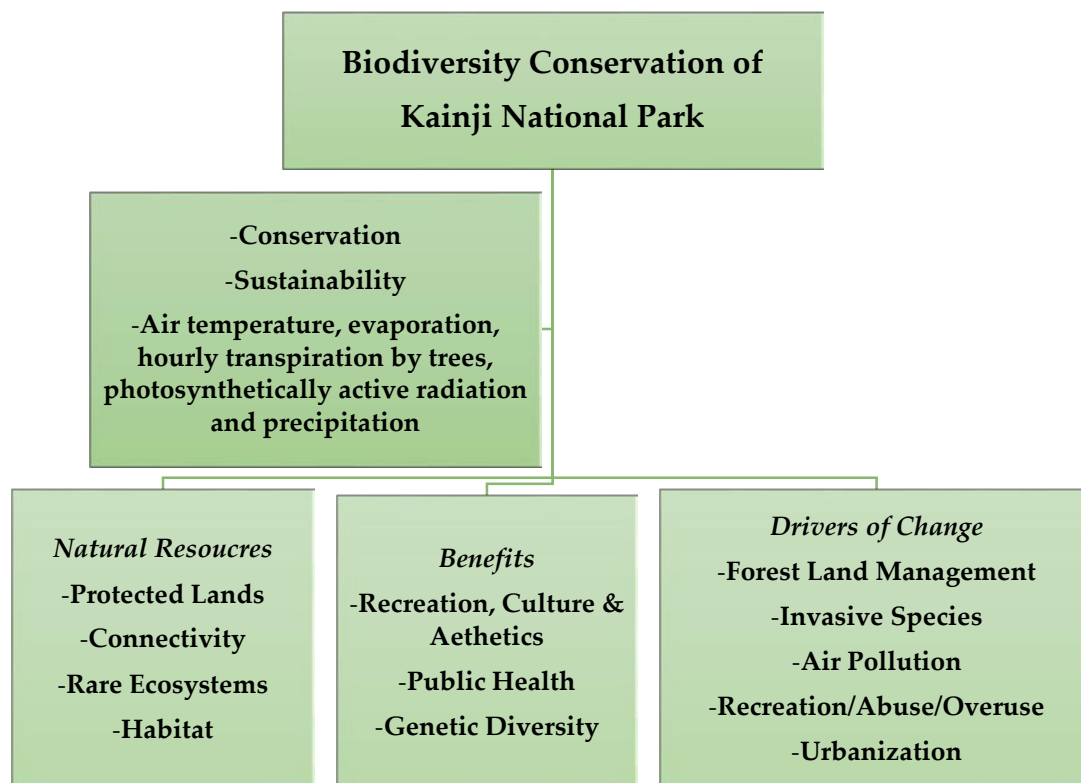
Biological richness is considered as "the variability among living species from all sources, including terrestrial, marine, and other aquatic habitats, as well as the ecological complexes of which they are a part" [1]. The convention's main goals are to conserve biodiversity, ensure the long-term viability of biodiversity components, and ensure equality in the allocation of genetic natural resources. Natural resources, public benefits, and environmental drivers of change are three components of biodiversity protection defined by

the United States Environmental Protection Agency [2], as depicted in Figure 1. In this context, the Federal Ministry of Environment as part of its policy is taking a huge step toward accomplishing wildlife protection in Nigeria's national parks and protected regions, which is in line with the United Nations' Sustainable Development Goals 2030.

Most nature reserves are places set aside and managed for wildlife and natural resource conservation [1, 3, 33]. They are diversely rich in flora and animals in great numbers, and they all assist the ecology in some way [3]. Each West African country's government has institutions responsible for monitoring, patrolling, and controlling illegal poaching operations in these protected areas, as well as enforcing applicable international treaties and conventions to which all West African nations are signatories. Protecting life support systems such as watersheds and water catchment regions is one of the advantages of protected areas and national parks.

Due to the obvious significant potential for research development, most research institutions in agriculture, health, and bioorganic technology are located near or in some of these locations. The link between national security and national parks (protected areas) is one of the government's concerns [4]. National parks and protected regions are vital to every country's national security [5]. Unfortunately, the majority of state-owned forest reserves have now become hotbeds of criminal activity [6].

As a result, the formation of these national parks would offer the much-needed apparatus to fend off criminal elements in the country's present struggle against insurgency, bandit armies and other organized crimes such as poaching, cattle rustling, and illegal logging, amongst others.



**Figure 1.** The objectives and key components of Biodiversity Conservation.

The existing approach to natural resource management by most states and municipal governments has outgrown the magnitude of strain on natural resources. Extension services on forestry and biodiversity-related issues have been ineffective in most West African nations, particularly Nigeria, leaving natural resource governance and biodiversity conservation in shambles.

## 2. Literature Review: Biodiversity, Protected Areas and National Parks

According to Conservation International [1], the value of biodiversity in West Africa is well understood. The West African forest environment is also home to two of Africa's great apes, including a tiny population of western lowland gorillas near the Nigeria-Cameroon border and remnant dispersed groups of endangered western chimpanzees [1]. A population of about 7,500 African elephants lives in West African countries, yet many of them live in northern savannah environments outside of forest ecosystems [7]. The Upper Guinean forest ecosystem in West Africa, on the other hand, is one of the world's most critically fragmented ecosystems [8].

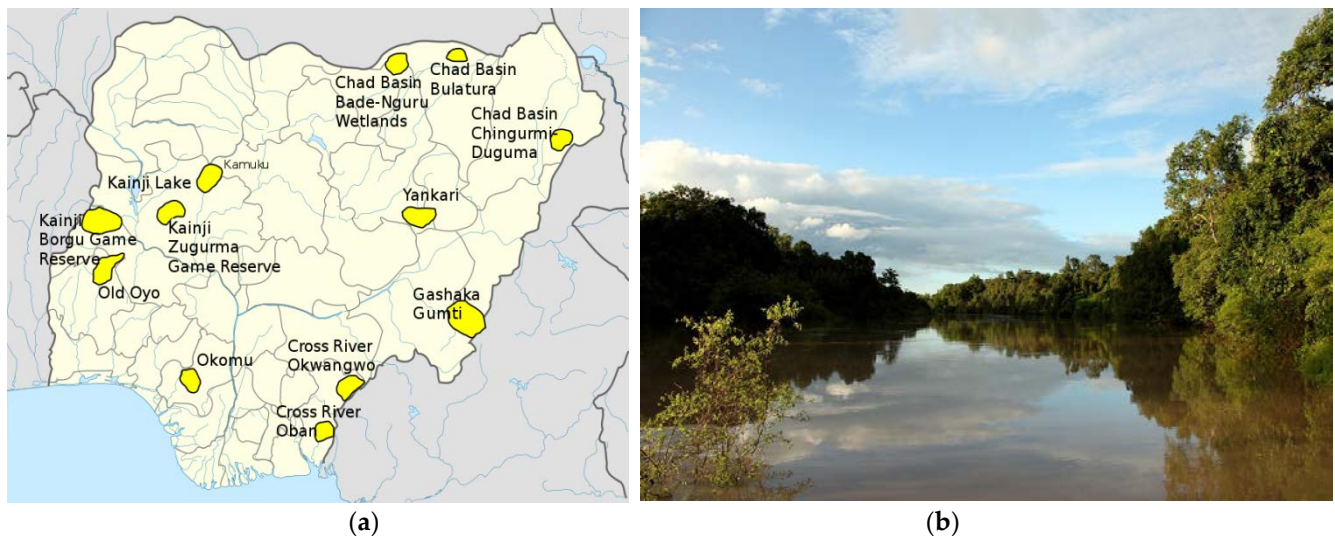
The International Union for Conservation of Nature (IUCN) classified the Kainji National Park as a National Park in the second category II [9-11, 24]. In terms of size and primary goal of safeguarding functioning ecosystems, the National Park is comparable to a wilderness region. National parks, on the other hand, are more tolerant of human visitation and the infrastructure that supports it. National parks are administered in such a way that they may help local economies by fostering educational and recreational tourism at a scale that does not jeopardize conservation efforts [2, 12-13]. The significant sections of a national park may be used for recreational or non-recreational purposes, but they should nevertheless operate as a shield for the protection of the protected area's native(indigenous) species and communities so that they can thrive in the long run. In a system devised by the organization, IUCN protected area management categories are used to classify national parks and nature-protected areas [14]. The Aichi Targets "Living in Harmony with Nature" and the UN Decade of Biodiversity's Strategic Plan for Biodiversity 2011–2020 were examined in this study.

Biological variety, according to [15, 16], underlies ecosystem functioning and the provision of ecosystem services critical to human well-being. It ensures food security, human health, and access to clean air and water; it supports local livelihoods and economic growth, and it is critical to achieving the goals. It's also a big part of a lot of people's belief systems, worldviews, and identities. Biodiversity, despite its critical value, continues to be lost. In 2010, the Parties to the Convention on Biological Diversity approved the Strategic Plan for Biodiversity 2011-2020 in Nagoya, Japan, to encourage broad-based action in support of biodiversity by all governments and stakeholders during the following decade [17-19]. The United Nations General Assembly has also named 2011-2020 as the United Nations Decade on Biodiversity, recognizing the urgent need for action. The Biodiversity Strategic Plan 2011-2020 is a ten-year framework for action by all governments and partners to conserve biodiversity and maximize its benefits to people [20-23]. However, the proposed frameworks were not actualised due to political and economical reasons peculiar to some developing countries around the world, hence the need for a prompt review.

### 2.1. The Study Area: Kainji National Park, Nigeria (West Africa)

Geographically located in both Kwara and Niger States (Provinces) of Nigeria, the Kainji National Park was given recognition in 1978, covering a land area of 5,341 km<sup>2</sup> [21, 22]. There are 18 national parks and nature-protected areas in Nigeria, the first eight are already recognized while the remaining ten are yet to be given national recognition. It is divided into three distinct zones/sectors: the *Kainji Lake*, at the western area of the lake, is the *Borgu Game Reserve*, and not too far from the South-east is the *Zugurma Game Reserve*. The Nigerian government through an agency known as the Federal National Park Service (FNPS) and there is a second agency known as the Nigeria National Park Service (NNPS). These two agencies manage and fund the park while preserving, enhancing, protecting, and managing vegetation and wild animals in the national parks, shortly after the Federal Government gave it special recognition in 2005. It was then considered a Lion Conservation Unit [21-23]. There are laws and policies already in place that are been enforced and actions were taken against poaching and unscrupulous human activities which can be

pursued under national reserves and parks law. In line with the microclimatic location of the study site, there is mostly savanna forest which comprises majorly the Borgu Game Reserve has a land area of 3,929 km<sup>2</sup>, the least in terms of size amongst the game reserves is the Zugurma Game Reserve with a size of 1,370 km<sup>2</sup>. A 136 km long lake separating the two main parts of the park is the Kainji Lake (see Figure 2b) connecting the two reserves with a rich green corridor conspicuously accessible with locally made canoes and boats. The geographical location of this nature-protected area is not yet attractive to the general public for tourism due to its poor location and security challenges. The tourism sector under the Nigerian Tourism Development Corporation in this park is very limited because the location is just evolving into an urban settlement.



**Figure 2.** (a) Map showing the recognized National Parks of Nigeria. (b) Kainji Lake, Kainji National Park (Photo Credit: Jeremy Weate, 2015).

The dominant fauna is over 70 mammal species, over 400 species of birds, and 40 species of reptiles and amphibians have been recorded in the park. These include the following wildlife: Elephant, African Manatee, Antelope, Hippopotamus, African Wild Dog, Honey Badger, Senegal Bushbaby, Monkey, and African Clawless Otter. There are lots of Reptiles like Nile Crocodile, West African Slender-snouted Crocodile, Turtle Species, Nile Monitor, Savannah Monitor, Lizards, Snakes, Baboons, Duikers, Hyenas, Roan Antelopes. Numerous species of Amphibians (15 amphibian species) were spotted, Fish (90 species-numerous species) the reptiles, amphibians, and fish are commonly spotted in the Lake Kainji zone. Assessing the form, function, and value of an urban forest may help guide management decisions that benefit human health and the environment.

### 3. Methods: The Study Area Protocol

The remotely sensed imageries were used for assessment of the perpetual land-use changes that occurred in the past five decades. The Landsat imageries gotten from 1972, 1986, 2015, and 2022 show the dramatic transformation in the area surrounding these protected areas. The three geographical zones are; Borgu zone, Zugurma zone and Kainji Lake/Reservoir zone. The study area covers a total length distance of 196.75 km (122.26 mi), a total breadth distance of 118.57 km (73.67 mi) and a total area of 25,024.51 km<sup>2</sup> (9,662.02 mi<sup>2</sup>). The three zones are found in the following geographical coordinate; Borgu- 10°02'15.7"N 4°02'24.0"E, Zugurma- 9°51'40.3"N 4°55'23.6"E and the third and final zone Kainji Lake/Reservoir- 10°20'15.9"N 4°34'57.0"E.

The transformation witnessed by the study area in the past five decades is enormous. The green area is gradually shifting from the wooded savanna into farmland and into the

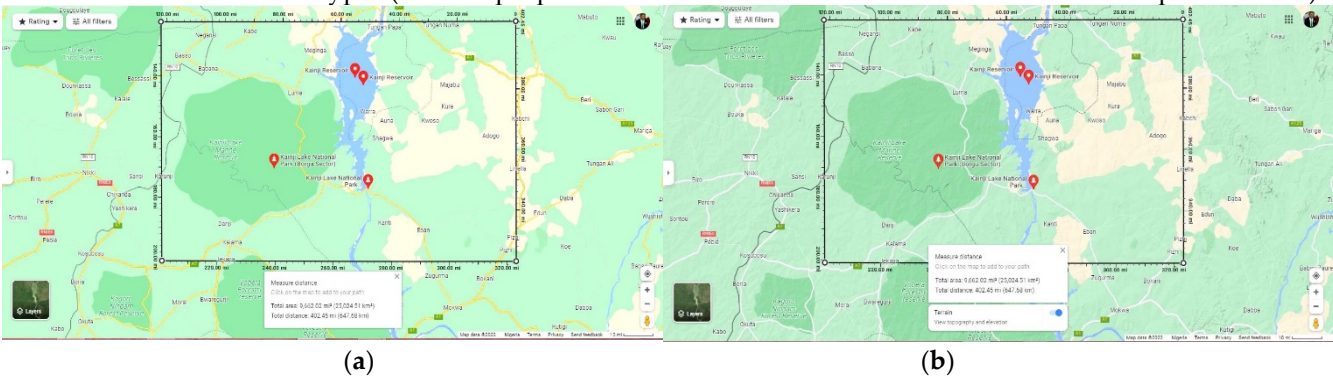


brown patches which are the present human settlements (see Figures 5a, b & c). This study presents novel results and analyses connecting the tree species and their microclimatic effects considering; the photosynthetically active radiation, rain/precipitation, temperature, transpiration, evaporation, water intercepted by trees, avoided a runoff by trees, potential evaporation by trees, isoprene and monoterpene by trees that revolves around the relationship between the flora(tree species) and fauna of the study site and the predominant biodiversity and land use. The rapid expansion of agriculture in this formerly semi-natural area can be understood in the context of changing land use and continuous agricultural purpose which has increased the Nigerian economy by the increase in food production, wood, and non-wood forest products.

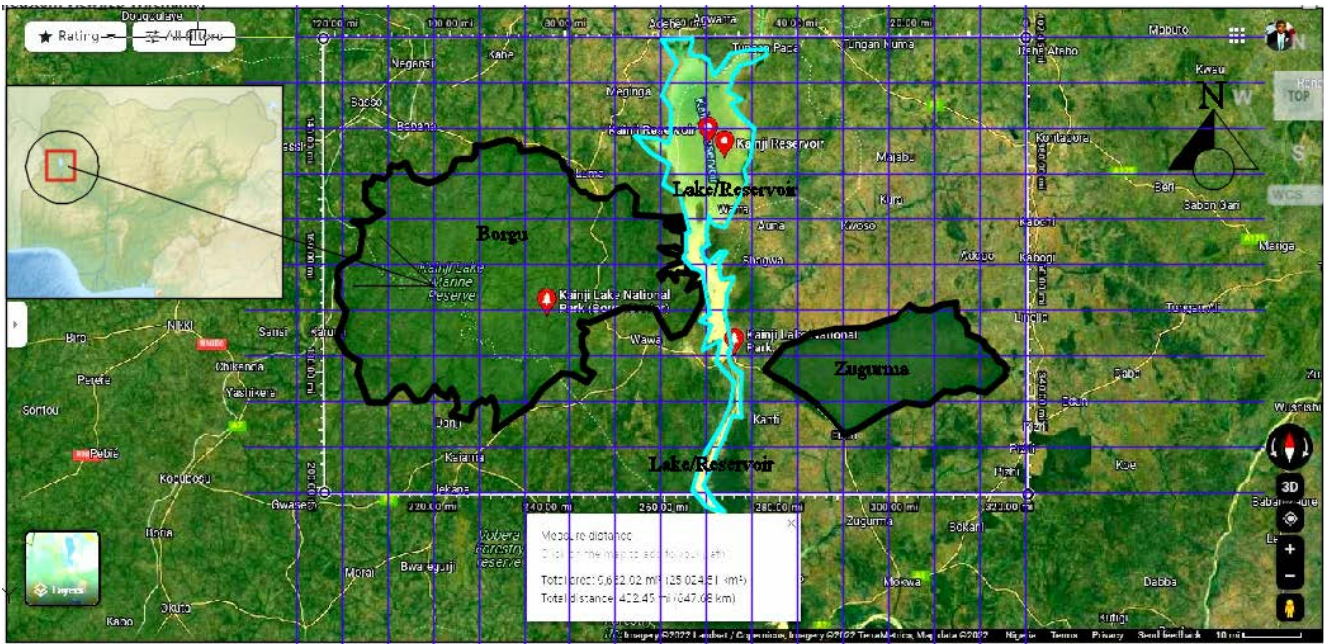
3.1. Data Collection

A random sampling strategy, consisting of random sample frames stratified stratum and all these strati are situated in a common ecoregion. These ecological areas have similar biophysical and environmental situations. This helps to ascertain the framework for effective research, inventory, and management of natural resources capturing both flora and fauna (biota analysis) that are dominant in the study area.

The 15 identified tree species with 563,500,000 (an average of 3,700,000 in each sample frame) trees per tree species/type with a total of 63% tree cover were randomly sampled within a stratum of 25x25km frames divided into 150 sample frames for proper analyses. There are over 30 species but this study only selected 15 to avoid it being too cumbersome for analysis and assessment. The report in this study was captured from January to November of the year 2018 using the i-Tree Eco v6.0.23 model, a software that estimates ecosystem services and structural aspects of the urban or rural forest using tree measurements and other data. It is a versatile software application that quantifies forest structure, environmental effects, and community value using data collected in the field from single trees, complete inventories, or randomly located plots throughout a study area, as well as local hourly air pollution and meteorological data. The available data on; air temperature, evaporation, hourly transpiration by trees, photosynthetically active radiation and precipitation avoided runoff by trees were also considered. The study also captured the potential evapotranspiration by trees, isoprene by trees, and monoterpene by trees. The most recent data for the selected area is 2018 (still relevant as not much has changed in the study area between 2018 and now) and the most recent years of 2019, 2021 and 2022 are yet to be available at the time of this study. The study area (approximately 12km<sup>2</sup> (45% of the total) is a subset of the captured area showing that the area that was fully forested many years ago has lost greenery in at least five decades (Figures 3 & 4). However, the ecoregion is similar and the indigenous tree deforested due to the host community's encroachment and unguided development. These trees are categorised into 15 types (1-15 for proper identifications- see Table 1 for the Tree IDs and Species Name).



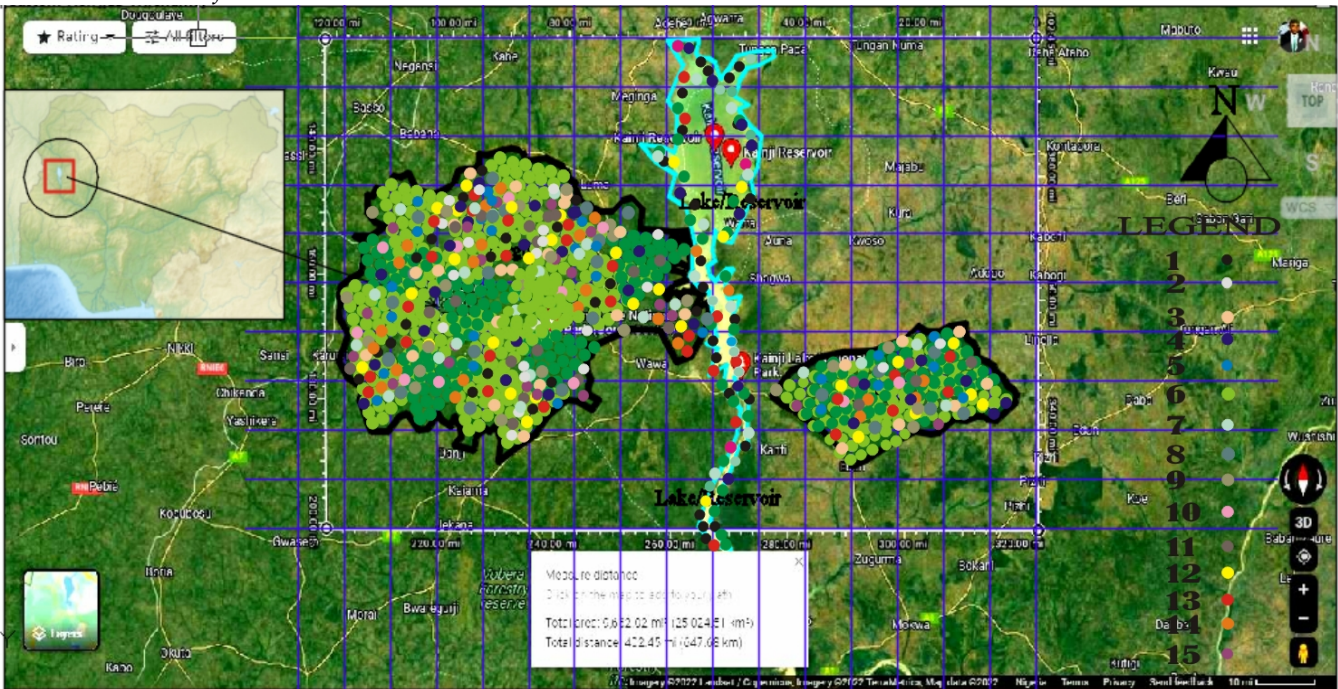




(c)

**Figure 3.** (a) Map of Kainji National Park (showing the three zones- Zugurma, Borgu, and Lake Kainji Zones) in 150 sample frames. (b) Soil Elevation of the study area. (c) Stratification of the study area.

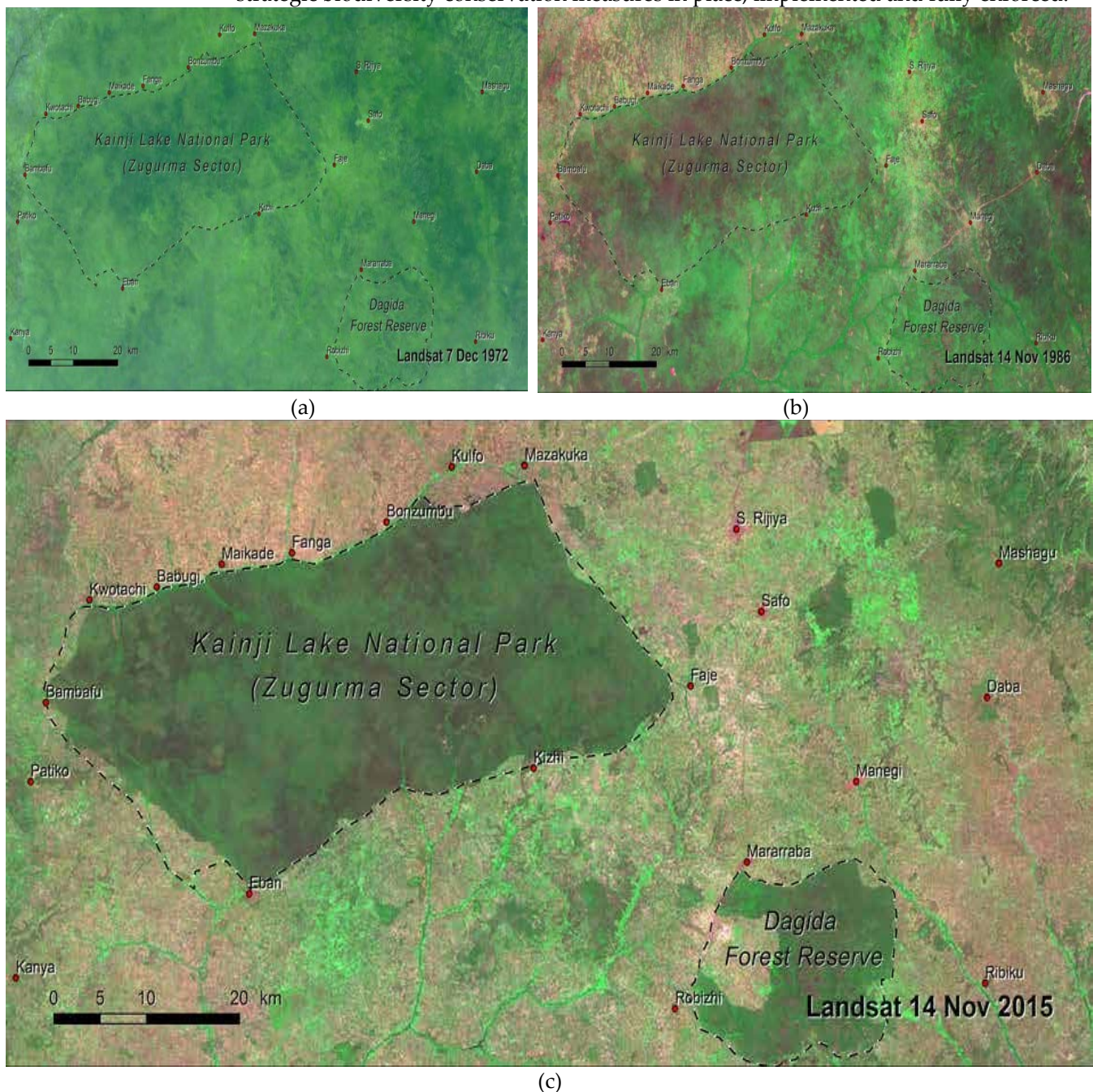
The dominant flora is the savanna woodland of the Borgu sector is dominated by the following indigenous trees: *Burkea Africana*, *Terminalia Avicennioides*, *Detarium Microcarpum*, *Isoblerlinia Tomentosa*, *Diospyros Mespiliformis*, *Polysphaeria Orbuscula*, *Terminalia Macrop-tera*, *Isoblerlinia Doka*, *Afzelia Africana*, *Daniella Oliveri*, *Pterocarpus Erinaceus*, *Parkia Clap-pertoniana*, *Vitellaria Paradoxa*, *Detarium Microcarpum*, *Uapaca Togoensis*, all these indige-nous trees belong to the following species of trees: *Abies*, *Abelia*, *Dovyalis abyssinica*, *Abarema*, *Abies balsamea*, *Acacia adunca*, *Lagarostrobos franklinii*, *Adenostoma*, *Adenaria floribunda*, *Salix fra-gilis*, *Hakea francisiana*, *Acacia argyrophylla*, *Adenaria floribunda*, *Carya x schneckii* and *Adenostoma fasciculatum* as used in the i-Tree Eco v6.0.23.



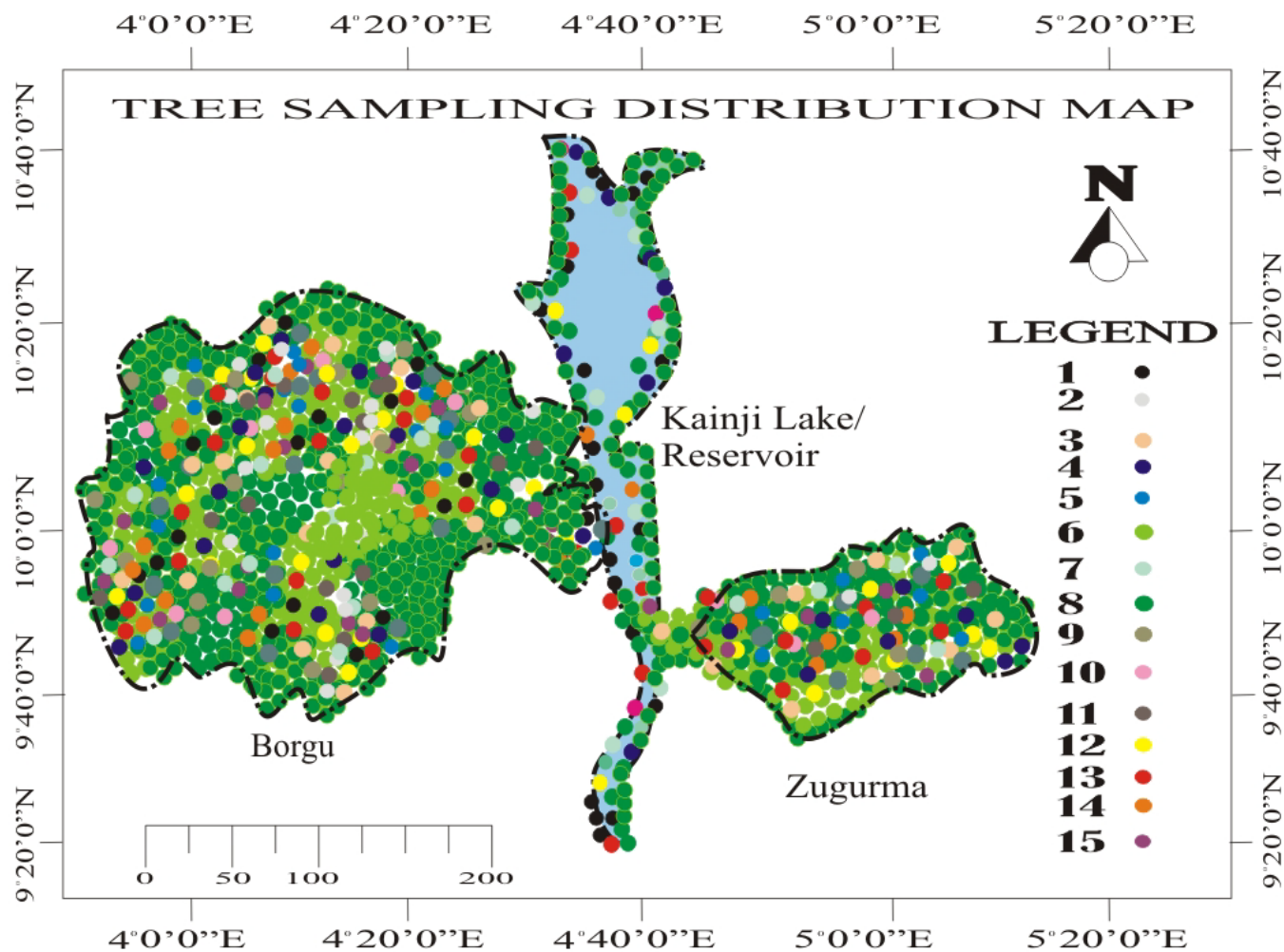
**Figure 4.** Tree species distribution within the study area.



Figure 5a,b&c below elucidated the conditions of the study area with the detailed maps of the Zugurma zone showing the deforestation between 1972 to 1986 is less than 30% as fewer visible development patches could be seen, However, from the year 1986 to 1996 and into 2015 the dramatic change has gone up to 60% and the immediate surrounding of the zone is worst affected dominated by subsistence farm settlement as more encroachment patches could be seen as well. Climate change impact has hence affected the microclimatic situation of Kainji National Park and the trees and wildlife have degenerated far below 80% if landscape regeneration and restoration are not been deployed and a sustainable strategy against the continuous loss of biota(flora&fauna) and the entire values of the primary ecosystem services will fall way below 100% as the intense development has risen to its prime due many aforementioned anthropogenic activities. The socio-economic situation, livelihood, environment, and well-being of the people (host community) will deteriorate to zero in the nearest future if nothing changes regarding strategic biodiversity conservation measures in place, implemented and fully enforced.



**Figure 5.** (a) Landsat Imageries of Kainji Lake National Park, 1972. (b) Landsat Imageries of Kainji Lake National Park, 1986. (c) Landsat Imageries of Kainji Lake National Park, 2015. **Source.** Maps adapted and modified from The U.S. Geological Survey, Cotillon, 2017.



**Figure 6.** Distribution map showing the tree species sampling.

The colour codes used(see map legend) do not necessarily represent the nature of behavioural patterns of the tree species but for annotation and prompt identification within the context of this study (Figure 6). There are so many recognised national parks and forest reserves in the northern part of Nigeria that has also suffered a similar fate but are not discussed in this study like the Dagida Forest Reserve which is 100km away from the Zugurma zone of the Kainji National Park. It is isolated and has the same tree species and similar bioclimatic conditions as the Zugurma and Borgu zones.

4. Results

In the year 2018, a study of the vegetation structure, function, and value of Kainji National Park and the protected forest was carried out. The i-Tree Eco model created by the US Forest Service's Northern Research Station was used to evaluate data through multiple frames of one plot placed throughout the research region with the assistance of the nearest weather station. The Zugurma zone is the most affected of all the three zones of the human impact due to excessing agricultural practice and exploration and withness deforestation and degradation that is visible in the Landsat Imagerieirs below dated back to 1972-2015 and later to the year (2018) that this study captured.



The following tables give the reports of individual-level results composition and structure of trees in the study area according to the weather station close to the location (see Tables 1 & 2 for the weather station data). The existing Flora and Fauna were identified and the i-Tree Eco v6.0.23 was used for onward analysis using the study identified parameters of crown health dieback and conditions below.

Table 1 presents a summary of the data collected in the field as well as additional estimated tree characteristics for each of the trees sampled. This table includes Plot and Tree ID, Species Name, DBH, Height, Street Tree Status, and estimations for Canopy Cover, Tree Condition, Leaf Area, Leaf Biomass, Leaf Area Index – calculated by dividing Leaf Area by Tree Canopy – and Basal Area. The following are the tree condition ratings used in this study:

- a. **Crown Health (dieback):** Excellent = 0% dieback, Good = 1 - 10% dieback, Fair = 10 - 25% dieback, Poor = 25 - 50% dieback, Critical = 50 - 75% dieback, Dying = 75 - 99% dieback, Dead = 100% dieback.
- b. **Crown Health (condition):** Excellent = 100% condition, Good = 90 - 99% condition, Fair = 75 - 90% condition, Poor = 50 - 75% condition, Critical = 25 - 50% condition, Dying = 1 - 25% condition, Dead = 0% condition.

**Table 1.** Composition and Structure of Individual Trees.

Plot ID	Tree ID	Species Name	DBH (cm)	Height (m)	Crown Height (m)	Crown Width (m)	Canopy Cover (m <sup>2</sup> )	Tree Condition	Leaf Area (m <sup>2</sup> )	Leaf Bio-mass (kg)	Leaf Area Index	Basal Area (m <sup>2</sup> )
1	1	Abies	35.0	30.0	10.0	15.0	176.7	Critical	558.1	78.6	3.2	0.1
1	2	Abelia	35.4	20.0	9.0	8.0	50.3	Poor	334.1	17.5	6.6	0.1
1	3	Dovyalis abyssinica	35.0	60.0	10.0	20.0	314.2	Critical	728.9	62.3	2.3	0.1
1	4	Abarema	35.0	35.0	10.0	17.5	240.5	Critical	171.8	14.8	0.7	0.1
1	5	Abies balsamea	50.0	30.0	2.0	15.0	176.7	Critical	209.1	21.8	1.2	0.2
1	6	Acacia adunca	50.0	20.0	3.0	12.5	122.7	Critical	11.6	2.8	0.1	0.2
1	7	Lagarostrobos franklinii	15.0	30.0	6.0	12.5	122.7	Poor	11.5	1.4	0.1	0.0
1	8	Adenostoma	40.0	65.0	10.0	12.5	122.7	Critical	187.5	14.1	1.5	0.1
1	9	Adenaria floribunda	25.0	30.0	11.0	17.5	240.5	Critical	60.2	7.8	0.3	0.0
1	10	Salix fragilis	10.0	25.0	1.0	12.5	122.7	Critical	5.5	0.3	0.0	0.0
1	11	Hakea francisiana	20.0	20.0	2.0	12.5	122.7	Critical	73.6	9.0	0.6	0.0
1	12	Acacia argyrophylla	40.0	35.0	12.0	17.0	227.0	Critical	43.6	10.5	0.2	0.1
1	13	Adenaria floribunda	50.0	40.0	15.0	25.0	490.9	Dying	36.3	4.7	0.1	0.2
1	14	Carya x schneckii	28.0	30.0	10.0	16.5	213.8	Critical	89.4	6.0	0.4	0.1
1	15	Adenostoma fasciculatum	45.0	35.0	5.0	10.0	78.5	Dying	177.2	13.3	2.3	0.2
<b>Total</b>							<b>2,822.7</b>		<b>2,698.6</b>	<b>265.0</b>		<b>1.6</b>

Table 2 provides an overview of the field data as well as additional estimated tree characteristics for each of the trees sampled. The following attributes are estimated in this table: Tree Count, Canopy Cover, Leaf Area, Leaf Biomass, and Basal Area.

Table 2. Composition of Individual Trees by Species.

Species Name	Tree Count		Canopy Cover (m <sup>2</sup> )		Leaf Area (m <sup>2</sup> )		Leaf Biomass (kg)		Basal Area (m <sup>2</sup> )	
	Value	%	Value	%	Value	%	Value	%	Value	%
Abarema	1	6.7	240.5	8.5	171.8	6.4	14.8	5.6	0.1	6.2
Abelia	1	6.7	50.3	1.8	334.1	12.4	17.5	6.6	0.1	6.3
Abies	1	6.7	176.7	6.3	558.1	20.7	78.6	29.7	0.1	6.2
Abies bal- samea	1	6.7	176.7	6.3	209.1	7.7	21.8	8.2	0.2	12.6
Acacia adunca	1	6.7	122.7	4.3	11.6	0.4	2.8	1.1	0.2	12.6
Acacia ar- gyrophylla	1	6.7	227.0	8.0	43.6	1.6	10.5	4.0	0.1	8.1
Adenaria floribunda	2	13.3	731.4	25.9	96.5	3.6	12.5	4.7	0.2	15.8
Adenostoma	1	6.7	122.7	4.3	187.5	6.9	14.1	5.3	0.1	8.1
Adenostoma fasciculatum	1	6.7	78.5	2.8	177.2	6.6	13.3	5.0	0.2	10.2
Carya x schneckii	1	6.7	213.8	7.6	89.4	3.3	6.0	2.3	0.1	4.0
Dovyalis abyssinica	1	6.7	314.2	11.1	728.9	27.0	62.3	23.5	0.1	6.2
Hakea fran- cisiana	1	6.7	122.7	4.3	73.6	2.7	9.0	3.4	<0.1	2.0
Lagarostro- bos franklinii	1	6.7	122.7	4.3	11.5	0.4	1.4	0.5	<0.1	1.1
Salix fragilis	1	6.7	122.7	4.3	5.5	0.2	0.3	0.1	<0.1	0.5
Total	15	100	2,822.7	100	2,698.6	100	265.0	100	1.6	100

Table 3. Summary of the Biodiversity Data and Corresponding Values.

Summary	Ecosystem Service Values (Approx Values)
The number of trees:	563,500,000 (An average of 3,700,000 in each sample frame)
Tree Cover	63.0 %
Most common species of trees:	Adenaria floribunda, Crack willow, Huon Pine connoted species.
Percentage of trees less than 6" (15.2 cm) diameter	13.3 %
Pollution Removal	N/A – data not collected
Carbon Storage	519.4 million metric tons (¥40.1 trillion)
Carbon Sequestration	10.44 million metric tons (¥806 billion/year)
Oxygen Production	12.6 million metric tons/year
Avoided Runoff	52.5 million cubic meters/year (¥50.9 billion/year).

The ecosystem service and values were captured and summarized in Table 3. It was revealed that land degradation, abuse, and misuse in the national park are both a part and consequence of environmental changes leading to the enormous loss of valuable biodiversity and land resources. The following findings were reported from the study metadata and reported using the i-Tree Eco v6.0.23 from January to December 2018 under



the following characteristics: photosynthetically; the active radiation, rain/precipitation, temperature, transpiration, evaporation, water intercepted by trees, avoided runoff by trees, potential evaporation by trees, isoprene and monoterpene by trees.

4.1 Tree Characteristics of Kainji National Park

The protected area of Kainji Park has an estimated 563,500,000 trees with a tree cover of 63.0 %. The three most common species are *Adenaria floribunda* (13.3 %), Crack willow (6.7 %), and Huon Pine (6.7 %). The overall tree density is 150 trees/acre. The protected forests are composed of a mix of native, foreign and exotic tree species.

As a result, tree diversification in protected forests is generally greater than in adjacent native environments. Increased tree diversity can reduce the overall damage or devastation caused by a species-specific insect or disease, but it can also put native plants in danger if any of the introduced species are invasive and can replace native species.

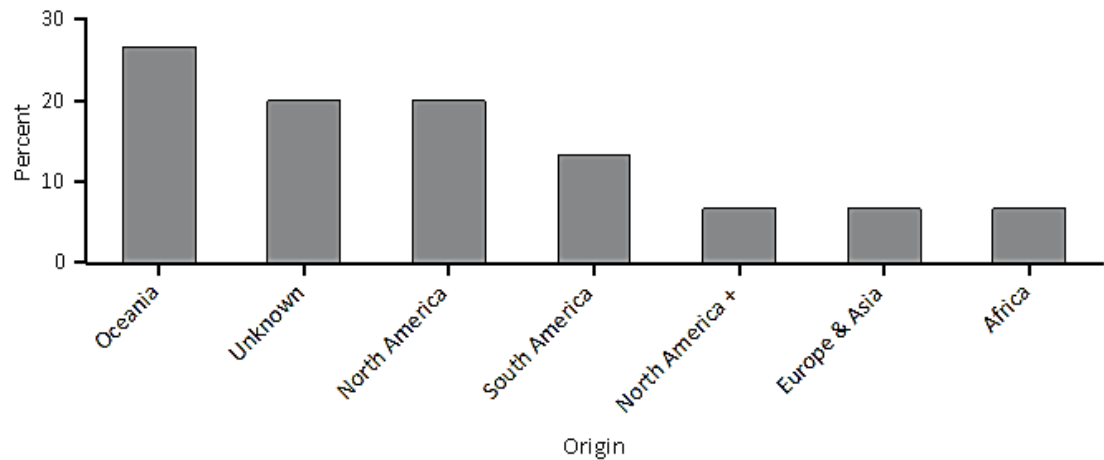


Figure 7. Chart showing the percentage of live trees population by area of native origin.

Table 4. Table showing the percentage of live trees population by area of native origin.

Stratum	Africa	Europe & Asia	North America	North America +	Oceania	South America	Unknown
Urban	6.7	6.7	20.0	6.7	26.7	13.3	20.0

The '+' symbol denotes that the species is native to a continent other than those specified in the grouping. Europe & Asia +, for example, denotes that the species is native to Europe, Asia, and at least one additional continent.

Only around 7% of the trees are native to Africa, while the majority of the trees originate from Oceania (27 % of the trees) where they are categorised as indigenous trees. The vitality, ability to adapt, reproductive capacity, and overall absence of natural adversaries are all characteristics of invasive plant species. They can use these characteristics to eliminate native trees, posing a hazard to the ecological regions. The most effective course of action in this troubled situation in Kainji National Park is eradicating by killing all of the invasives. However, increasing data suggest that removing invasive species from fragile ecosystems is not only effective but also crucial for restoring endangered habitats and species. Figure 8 (Table 1), shows the estimates of the proportion of each species of tree identified in each Diameter at Breast Height (DBH) size class in the study. The proportion of the tree species population by DBH class for each of the ten-fifteen most frequent tree species in the research region is presented in the chart (Figure 8).

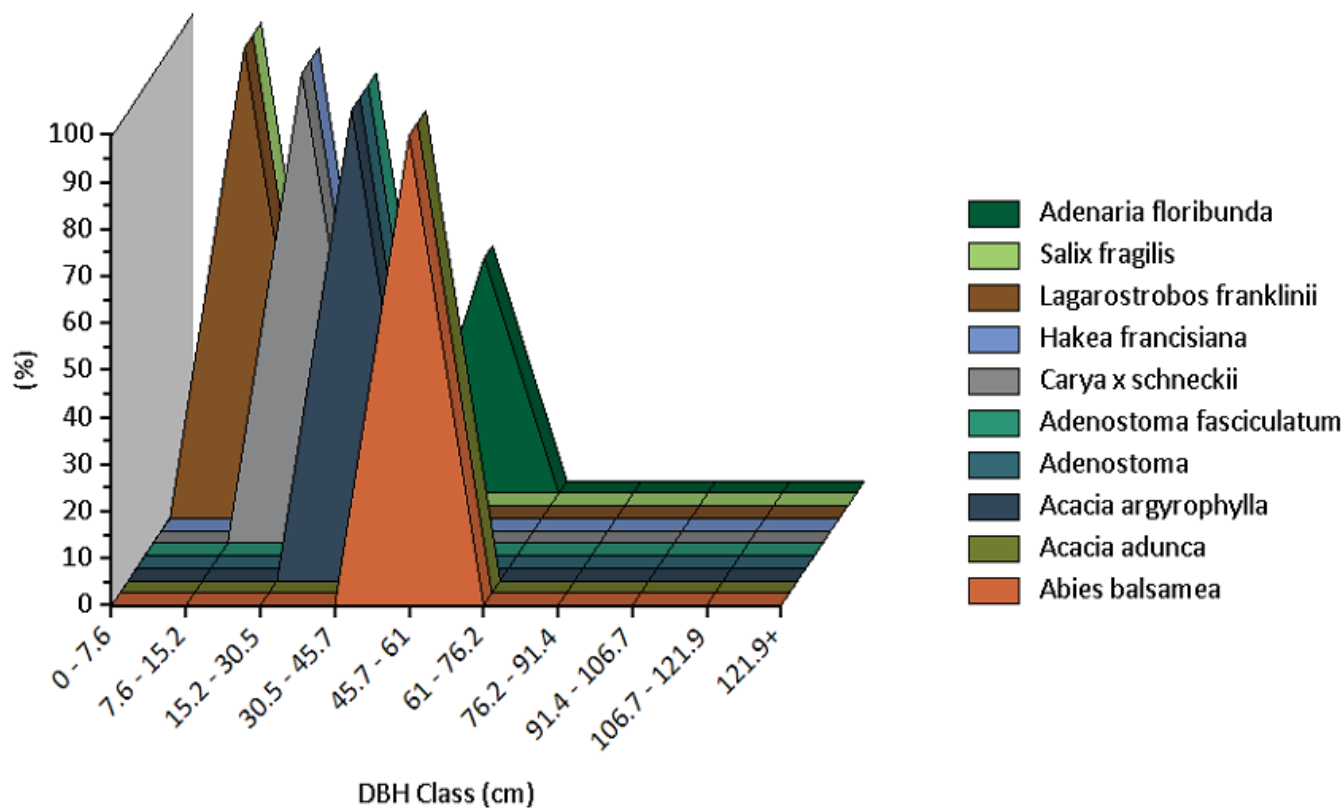


Figure 8. Percentage of Species Distribution by DBH Class.

The analysis provides total estimates and percentage contributions of the number of trees for each species in the study area. This report displays results in pie charts and table formats below (Table 5 & Figure 9 below).

Table 5. Tables showing the Population Summary by Species.

Species	Number of Trees	Percentage of Population
Adenaria floribunda	75,128,717	13.3 %
Salix fragilis	37,564,359	6.7 %
Lagarostrobos franklinii	37,564,359	6.7 %
Hakea francisiana	37,564,359	6.7 %
Carya x schneckii	37,564,359	6.7 %
Adenostoma fasciculatum	37,564,359	6.7 %
Adenostoma	37,564,359	6.7 %
Acacia argyrophylla	37,564,359	6.7 %
Acacia adunca	37,564,359	6.7 %
Abies balsamea	37,564,359	6.7 %
Dovyalis abyssinica	37,564,359	6.7 %
Abarema	37,564,359	6.7 %
Abelia	37,564,359	6.7 %
Abies	37,564,359	6.7 %
Total	563,465,378	100%



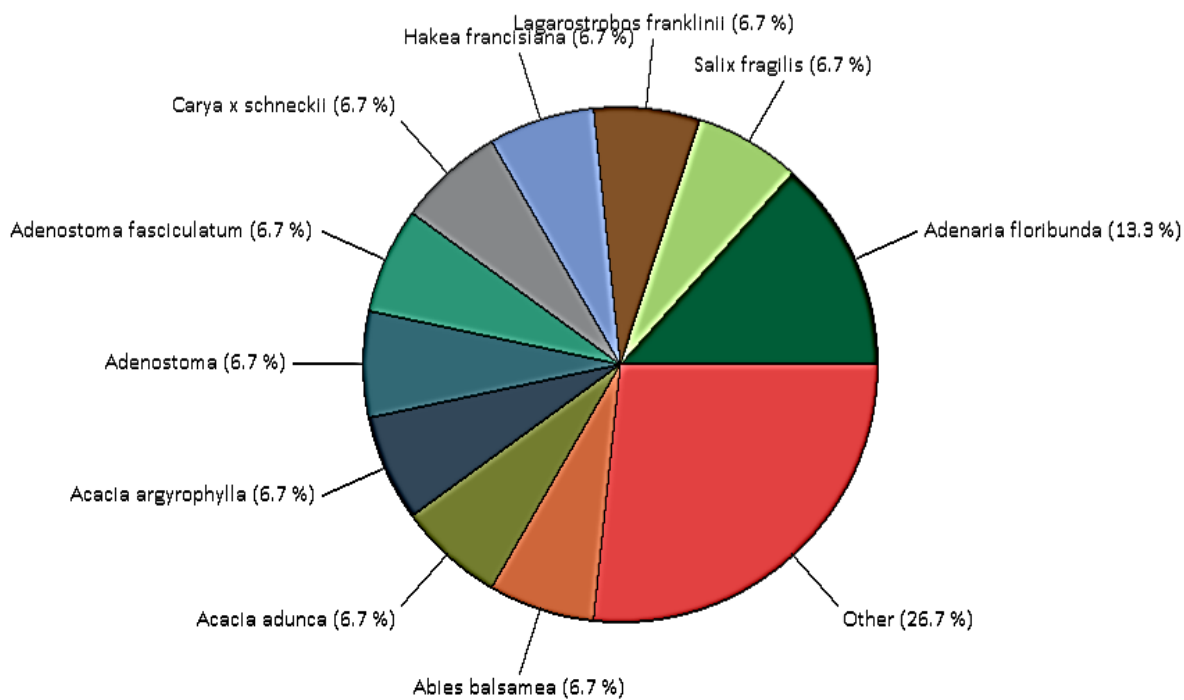


Figure 9. Pie Charts showing the Population Summary by Species

This study reveals that the tree characteristics of the urban forest and biodiversity conservation of Kainji Park have an estimated 563,500,000 trees with a tree cover of 63.0%. The three most common species are Adenaria floribunda (13.3%), Crack willow (6.7%), and Huon Pine (6.7 %). The data analysed for the evaluation of the urban forest cover leaf area and importance values shows that several plant advantages are proportional to the plant's robust leaf pore volume. Trees cover about 63% of Kainji National Park protected area and provide 39.14 thousand sqm of leaf area. the most dominant species in terms of leaf area are Abyssinian Gooseberry, fir spp, and abelia spp. Importance values (IV) are calculated as the sum of percentage population and percentage leaf area. High importance values do not mean that these trees should necessarily be encouraged in the future; rather these species currently dominate the Kainji National Park forest structure.

Table 6. The table shows the VOC Emissions by Individual Trees.

Plot ID	Tree ID	Species Name	Isoprene (g/yr)	Monoterpene (g/yr)	VOCs (g/yr)
1	1	Abies	118.1	1,875.7	1,993.9
1	2	Abelia	0.0	0.0	0.0
1	3	Dovyalis abyssinica	4.1	49.6	53.6
1	4	Abarema	90.4	38.6	128.9
1	5	Abies balsamea	32.7	519.7	552.4
1	6	Acacia adunca	0.1	54.6	54.6
1	7	Lagarostrobos franklinii	0.0	0.0	0.0
1	8	Adenostoma	0.0	40.4	40.4
1	9	Adenaria floribunda	25.8	27.9	53.7
1	10	Salix fragilis	13.2	0.9	14.1
1	11	Hakea francisiana	0.6	14.2	14.8
1	12	Acacia argyrophylla	0.2	204.7	205.0
1	13	Adenaria floribunda	15.6	16.8	32.4
1	14	Carya x schneckii	0.0	33.3	33.3

1	15	Adenostoma fasciculatum	0.0	38.2	38.2
<b>Total</b>			<b>300.7</b>	<b>2,914.7</b>	<b>3,215.4</b>

**Table 7.** The table shows the Carbon Storage of Individual Trees.

Plot ID	Tree ID	Species Name	Carbon Storage (kg)	% of Total
1	1	Abies	851.1	6.2
1	2	Abelia	598.0	4.3
1	3	Dovyalis abyssinica	1,605.9	11.6
1	4	Abarema	980.1	7.1
1	5	Abies balsamea	592.5	4.3
1	6	Acacia adunca	1,128.4	8.2
1	7	Lagarostrobos franklinii	88.5	0.6
1	8	Adenostoma	2,206.9	16.0
1	9	Adenaria floribunda	459.5	3.3
1	10	Salix fragilis	28.5	0.2
1	11	Hakea francisiana	147.9	1.1
1	12	Acacia argyrophylla	1,251.8	9.1
1	13	Adenaria floribunda	2,129.1	15.4
1	14	Carya x schneckii	565.5	4.1
1	15	Adenostoma fasciculatum	1,193.4	8.6
<b>Total</b>			<b>13,827.0</b>	<b>100%</b>

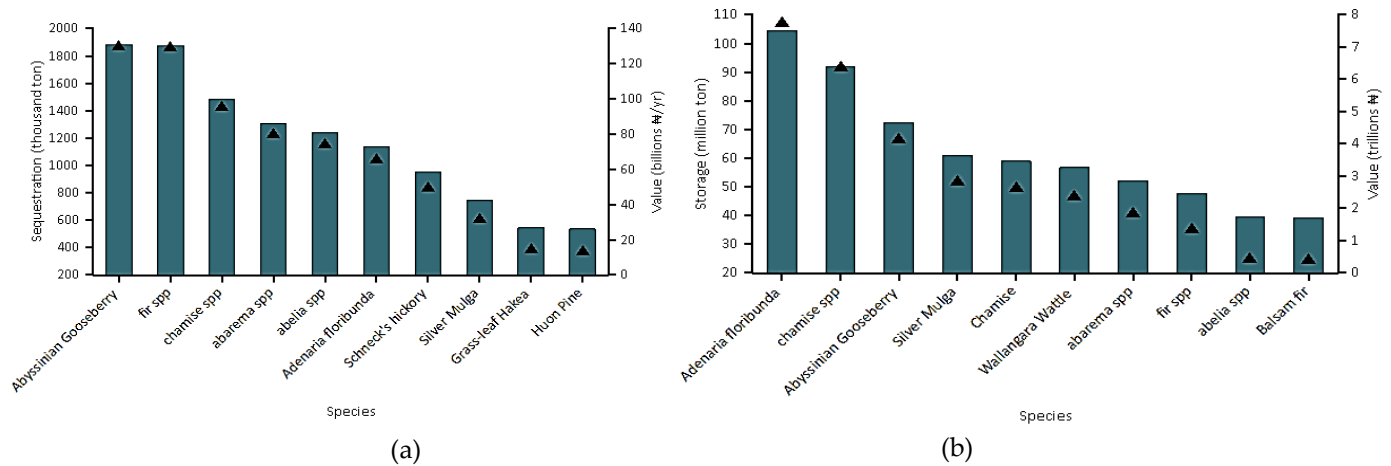
This study used the tropical carbon equations of i-Tree Eco will limit carbon storage to a maximum of 7,500 kg (16,534.7 lbs) in these estimates.

**Table 8.** The table shows the Carbon Sequestration of Individual Trees.

Plot ID	Tree ID	Species Name	Carbon Sequestration (kg/yr)	% of Total
1	1	Abies	44.9	16.2
1	2	Abelia	27.9	10.0
1	3	Dovyalis abyssinica	45.1	16.2
1	4	Abarema	29.6	10.6
1	5	Abies balsamea	8.9	3.2
1	6	Acacia adunca	0.9	0.3
1	7	Lagarostrobos franklinii	9.0	3.2
1	8	Adenostoma	34.4	12.4
1	9	Adenaria floribunda	25.0	9.0
1	10	Salix fragilis	5.3	1.9
1	11	Hakea francisiana	9.2	3.3
1	12	Acacia argyrophylla	14.6	5.3
1	13	Adenaria floribunda	0.1	0.0
1	14	Carya x schneckii	20.2	7.3
1	15	Adenostoma fascicula- tum	2.7	1.0
<b>Total</b>			<b>277.8</b>	<b>100%</b>



The table (Table 7 & 8, Figure 10 a & b) provides the estimates of carbon storage for each of the trees sampled in Kainji National Park. The percentage contribution to the total carbon storage and gross carbon sequestration of all sampled trees is also reported.

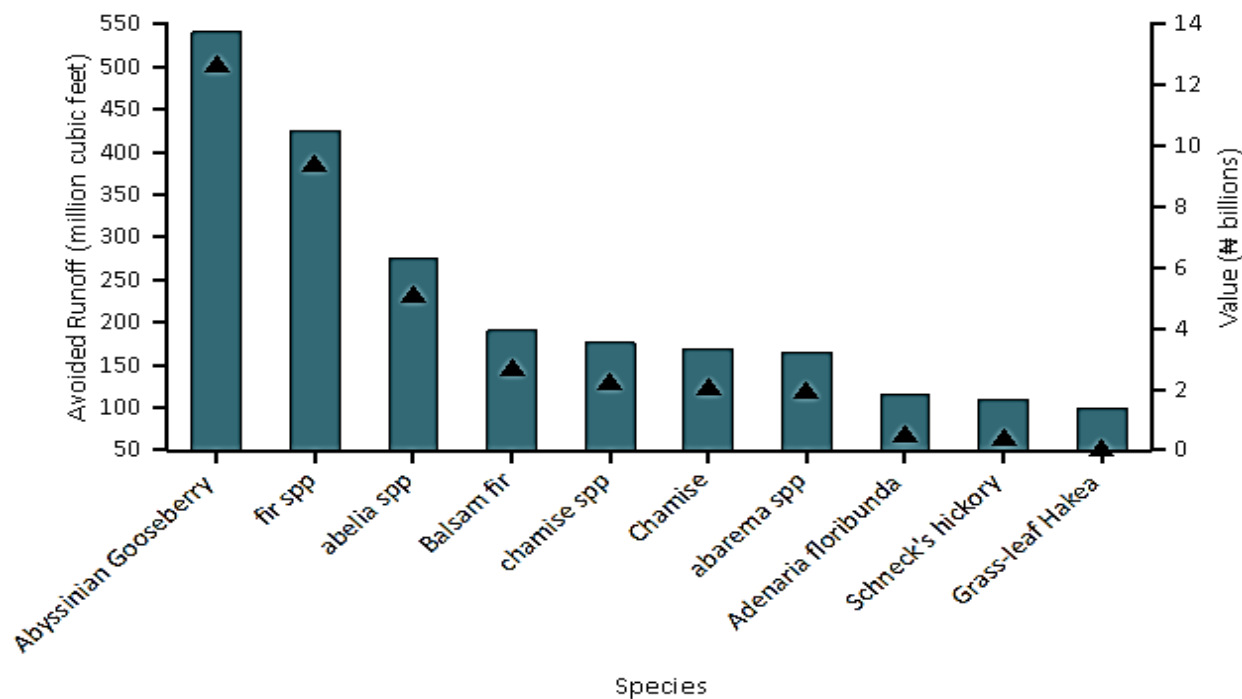


**Figure 10.** (a) Estimated annual gross Carbon Sequestration and value for park tree species with the greatest sequestration. (b) Estimated annual gross Carbon Storage and value for park tree species with the greatest storage.

**Table 9.** The table shows Oxygen Production by Trees.

Plot ID	Tree ID	Species Name	Oxygen Production (kg/yr)
1	1	Abies	119.8
1	2	Abelia	74.3
1	3	Dovyalis abyssinica	120.3
1	4	Abarema	78.9
1	5	Abies balsamea	23.7
1	6	Acacia adunca	2.3
1	7	Lagarostrobos franklinii	24.0
1	8	Adenostoma	91.8
1	9	Adenaria floribunda	66.7
1	10	Salix fragilis	14.3
1	11	Hakea francisiana	24.7
1	12	Acacia argyrophylla	38.9
1	13	Adenaria floribunda	0.3
1	14	Carya x schneckii	53.7
1	15	Adenostoma fasciculatum	7.2
<b>Total</b>			<b>740.9</b>

Dovyalis abyssinica and Abies species appear to have the highest oxygen production while Acacia adunca has the least and a total of 741kg of oxygen is been produced per year in the study area.



**Figure 11.** The chart shows the avoided runoff and the value for the species with the greatest overall impact of runoff.

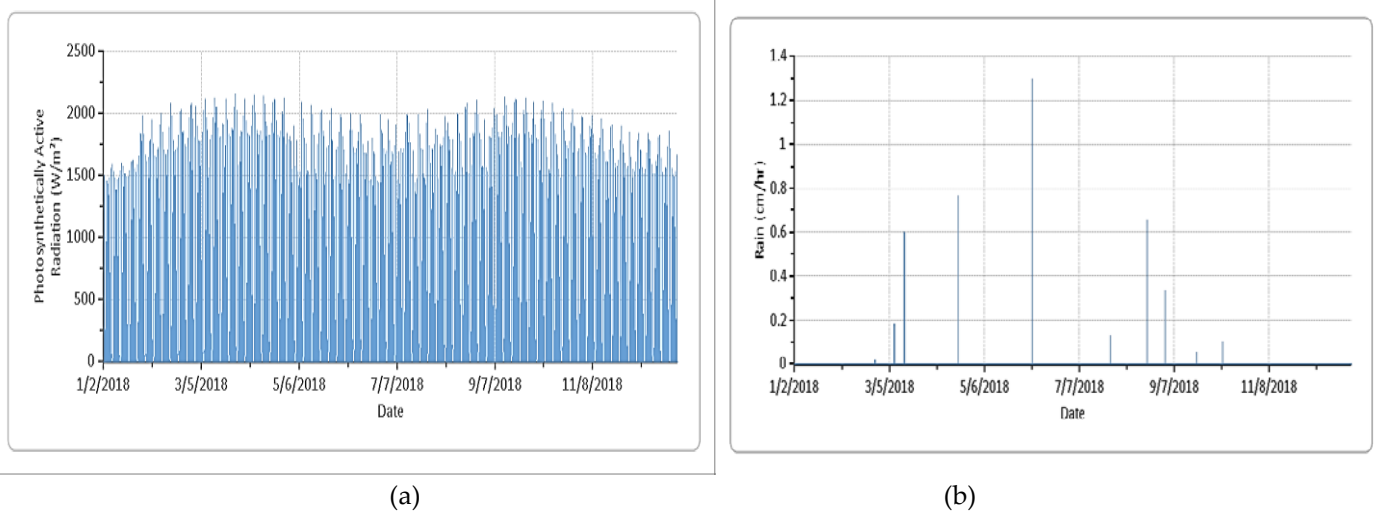
5. Discussion

5.1. Trees’ Benefits for Biodiversity Conservation

This section further discusses the tree benefits of green, low carbon, and sustainable environment within the context of biodiversity conservation considering; Carbon Storage, Carbon Sequestration, Hydrology Effects, Pollution Removal, Oxygen production, and Volatile Organic Compounds (VOCs). The models for achieving these themes vary from zone to zone across the entire Kaniji Park but it is not peculiar to the study area only as trees all over the world have similar characteristics and growth patterns. In line with the target of United Nations Sustainable Development Goal 13, 2030- *Climate Action*, the microclimatic data captured were analysed. However, the pollution removal data were not available at the time of this study.

5.1.1. Photosynthetically Active Radiation and Precipitation

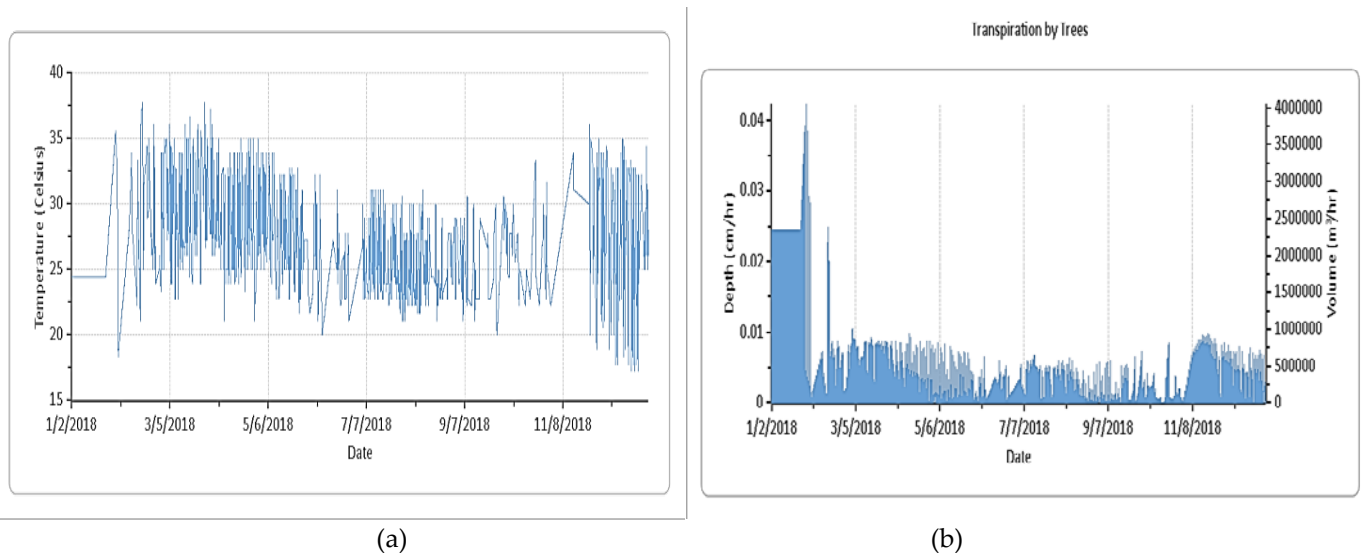
The data report (Figure 12a) displays the hourly photosynthetically active radiation based on weather data that is available. The precipitation report (Figure 12b) displays the hourly precipitation based on weather data. This report displays results in a line chart for the user-designated weather year 2018. The months of May and August witness the highest photosynthetically active radiation while June has the highest amount of hourly precipitation and December records barely a limited or no precipitation at all.



**Figure 12. (a) Photosynthetically Active Radiation. (b) Precipitation.**

### 5.1.2. Temperature and Transpiration

The report (Figure 13a) displays hourly air temperature based on the weather data. The report (Figure 13b) also displays the hourly transpiration by trees. Transpiration is the amount of water moved through plants and released into the atmosphere. March and November recorded the highest amount of air temperature with hourly temperature (36-38 degrees) varying unevenly throughout the year and Transpiration invariably occurring mostly in January and February having as high as 0.04cm/hr (4000000 m<sup>3</sup>/hr) and below 0.01cm/hr in August.



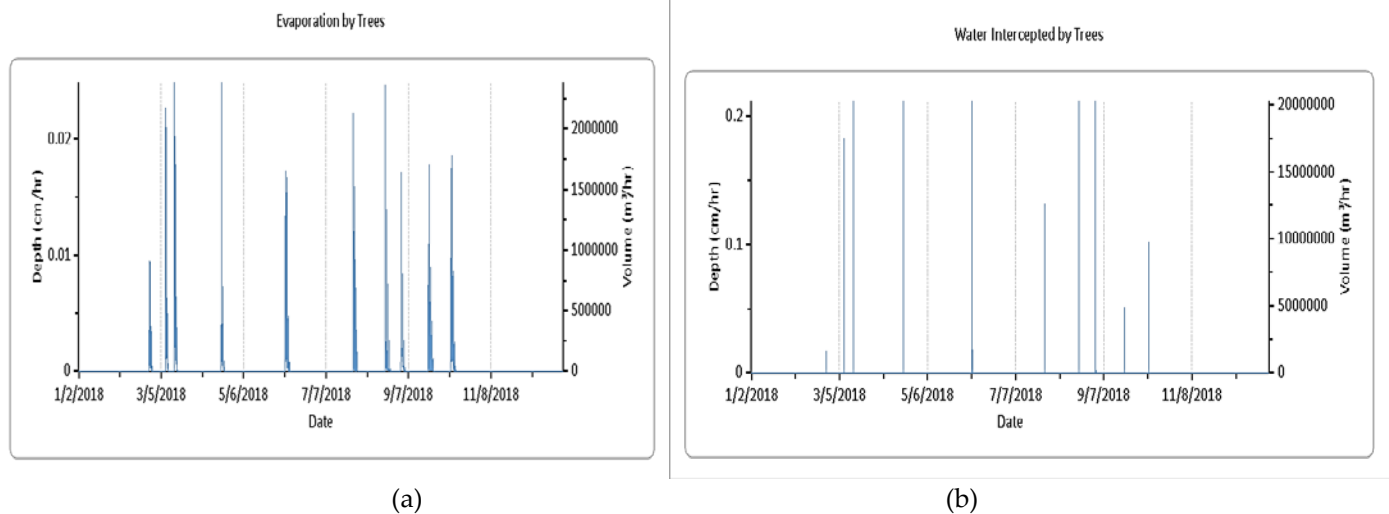
**Figure 13. (a) Air Temperature. (b) Hourly Transpiration by trees.**

### 5.1.3. Evaporation and Water Intercepted by trees

The hourly evaporation by trees is shown in the data report (Figure 14a). The amount of water released into the atmosphere from a plant's surface is referred to as evaporation. The hourly water interception by trees is shown in the data report (Figure 14b). The amount of rainwater that fell on plants and was intercepted by the leaves and stems is referred to as rainwater captured that evaporates into the atmosphere eventually. This varies throughout the year and appears more in May and July respectively above 2,000,000m<sup>3</sup>/hr. This data is also similar to the previous but the volume of water intercep-



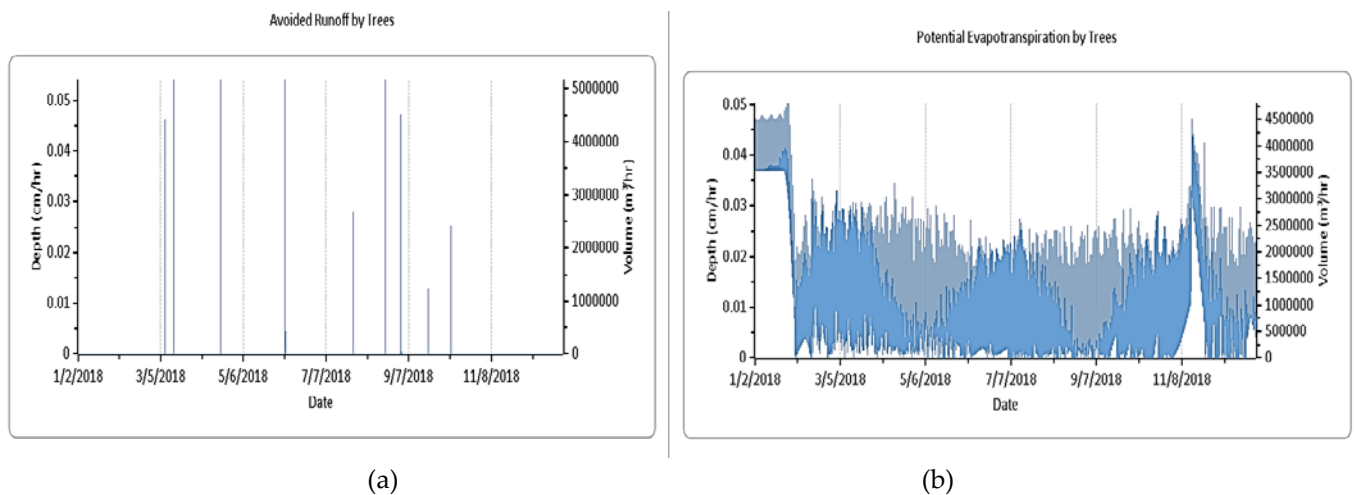
tion differs running to over 10,000,000m<sup>3</sup>/hr according to the metadata recorded in the study area.



**Figure 14.** (a) Evaporation. (b) Water Intercepted by trees.

#### 5.1.4. Avoided Runoff by trees and Potential Evaporation by trees

The hourly prevented runoff by trees is shown in the report (Figure 15a). The quantity of water that would otherwise become surface runoff into streams but does not is known as avoided runoff. Water interception by plants, ground depression storage, infiltration on pervious ground covers, and overland flow on impermeable ground covers are all factored into the calculations.



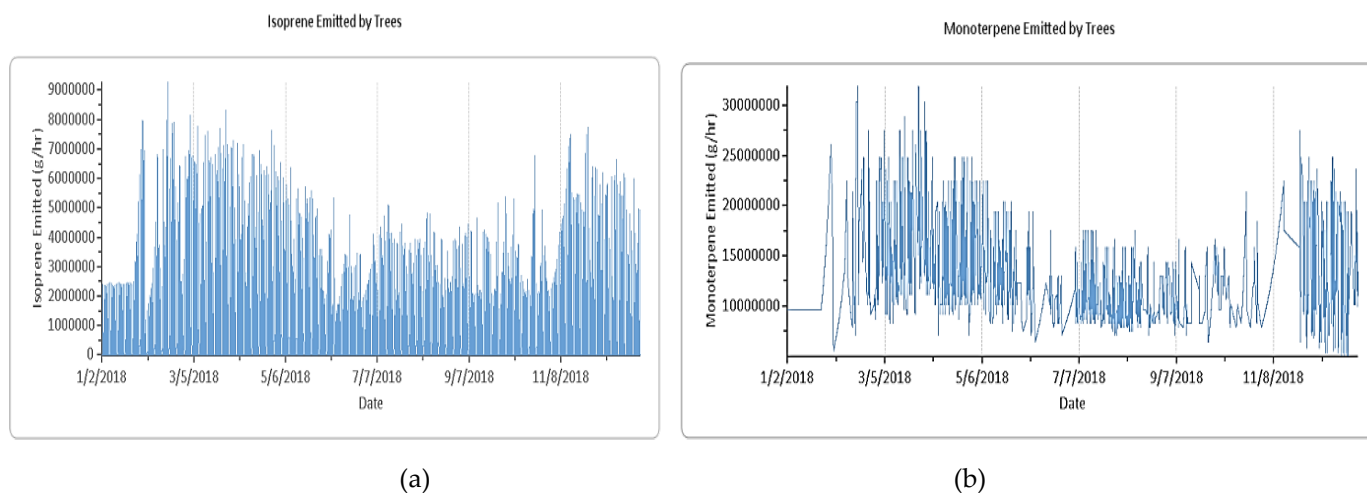
**Figure 15.** (a) Avoided Runoff by trees. (b) Potential Evaporation by trees.

The report (Figure 15b) displays the hourly potential evapotranspiration by trees. Potential evapotranspiration is the sum of the evaporation from the soil and the transpiration from plants that would occur if an unlimited amount of water were available.

#### 5.1.5 Isoprene and Monoterpene by trees

The report (Figure 16a) displays hourly estimates of the isoprene emissions of all trees. The report (Figure 16b) also displays hourly estimates of the monoterpene emissions of all trees. Isoprene is generated and exhaled by a wide range of tree species present in this study area. Isoprene emissions by vegetation are estimated to be over 600 million metric tons per year, with half coming from subtropical deciduous forests as well as the rest predominantly through vegetation. This amounts to around one out of all compounds emitted into the atmosphere, roughly similar to methane production. Iso-

prene accounts for around 80% of hydrocarbon emissions in deciduous woods. Algae, both microscopic and macroscopic, create isoprene, albeit in minor amounts compared to trees. Plant-emitted monoterpenes play an essential role in atmospheric composition by modifying the oxygen consumption of the atmosphere and producing new nanoparticles and pollutants aerosols. Climate change may have an impact on monoterpene emission rates and patterns (Figure 16b).



**Figure 16.** (a) Isoprene by trees. (b) Monoterpene by trees.

### 5.2. Air Pollution Removal by Urban Trees

Poor air quality is a problem in many urban areas. It has the potential to negatively impact human health, landscape materials, and ecological processes, as well as reduce visibility. The urban forest can help to improve air quality by decreasing air temperatures, removing pollutants from the air directly, and lowering energy usage in buildings, which reduces power plant air pollution emissions. Dwyer and Nowak [25] earlier stated that trees emit volatile organic compounds that contribute to ozone generation. To estimate pollution clearance by trees in Kainji Park, it is expedient to analyze field data, present pollution, and meteorological data. The most pollutant eliminated was carbon monoxide. Trees are predicted to remove at least 10,000 tons of ozone (O<sub>3</sub>), carbon monoxide (CO), nitrogen dioxide (NO<sub>2</sub>), microscopic particles less than 2.5 microns (PM<sub>2.5</sub>), including sulfur dioxide (SO<sub>2</sub>) from the atmosphere per year, with an associated value.

The research area's trees released an estimated 133.1 thousand tons of volatile organic compounds (VOCs) in 2021. (12.45 thousand tons of isoprene and 120.7 thousand tons of monoterpenes). Emissions vary per species, depending on species features (for example, some genera, like oaks, produce a lot of isoprenes) and leaf biomass. Fir spp. and Balsam fir accounted for approximately 80% of the VOC emissions in the urban forest (Table 6). The VOC (volatile organic compound) emissions of each tree in Kainji National Park. Emissions are displayed for monoterpene, isoprene, and the sum of both. These compounds with a high vapour pressure but low water solubility are known as volatile organic compounds. Many VOCs are man-made substances that are utilized and created in the production of paints, cosmetics, and refrigerants, among other things. Chemical solvents, such as trichloroethylene; fuel oxygenates, such as methyl tert-butyl ether (MTBE); or chlorination by-products, such as chloroform, are examples of VOCs. Biofuels, mechanical fluids, spray paint, and dry cleaning solvents all contain VOCs. VOCs are typical pollutants found in the environment.

### 5.3. Carbon Storage and Sequestration

Anthropogenic global warming and its ramifications on the environment are important worldwide concerns. Every year, trees trap carbon in new growth, reducing the

quantity of carbon in the atmosphere. The size and health of the trees affect the quantity of carbon stored each year. The gross sequestration of Kainji National Park trees is about 11.5 million tons of carbon per year. Net carbon sequestration captured in the forest is about 5.207 million tons (Table 7&8). Another method that which trees might impact global climate change is through carbon storage [26-29]. A tree stores more carbon as it develops by storing it in its accumulated tissue. When a tree dies and decays, much of the carbon it has stored is released back into the atmosphere. As a result, carbon storage is a measure of how much carbon may also be released if trees are left to die and degrade. When a tree dies, the wood may be used to make long-lasting wood products, heat buildings, or generate electricity, reducing carbon emissions from decomposition or fossil-fuel or wood-based power plants. Kainji National Park's trees are believed to contain 573,000,000 tons of carbon (40.1 trillion) in their trunks. *Adenaria floribunda* stores the most carbon (about 18.7% of the total carbon stored) and Abyssinian Gooseberry sequesters the most among the species studied (approximately 16.2 % of all sequestered carbon).

#### 5.4. Oxygen Production

One of the most widely touted benefits of trees is the creation of oxygen (Table 9). The quantity of carbon stored by a tree, which is linked to the buildup of tree biomass, is directly proportional to its net yearly oxygen output. The amount of oxygen produced by trees in the research region is estimated to be 13.89 million tons per year. However, because of the vast and relatively consistent amount of oxygen in the atmosphere and massive generation by aquatic systems, this tree's benefit is very minor compared to the trees in the Southern region of the country. Most national parks and nature-protected places have a large reservoir of oxygen in their atmosphere. Table 9 shows the number of trees, the net oxygen production, the net carbon sequestration by individual trees and the leaf area annually(kg/yr) which varies depending on the bioclimatic features and the season of the year.

#### 5.5. Avoided Runoff

Surface water runoff from most protected areas may be a source of pollution in streams, marshes, rivers, lakes, and seas, which is a source of worry in many metropolitan areas [30-32]. During precipitation events, vegetation (trees and bushes) intercepts some of the precipitation, while the rest reaches the ground (Figure 16 shows the tree species in the study area and the avoided runoff of each). The enormous number of impermeable surfaces in metropolitan areas increases the level of stormwater while the reverse is the case for rural areas where permeable surfaces are enormous. These variations are common in most emerging urban-rural areas of West Africa [33].

Measuring the land use and land covers (LULC) change is essential for the sustainable conservation of natural resources, biodiversity protection, food security monitoring, global warming and environmental research [33-40]. The fast-changing LULC not only reduces biodiversity but further depletes the ecosystem service and its values [41]. A better assessment of land-use changes in a protected area is more important than ever, given the growing fast changes in LULC in response to human population expansion in the emerging city mainly due to human factors and impacts [41, 42]. Although there are numerous LULC assessment methods available, none of them provides a complete picture of changes and their underlying causes [43-45]. Precipitation, underground water, and other drainage basin components in Africa's floodplain are largely altered by natural pursuits and processes. In both the mountains and the valleys, these operations impact river runs and the availability of sustainable freshwater resources [46]. The findings of the study have extensively highlighted and assessed the microclimatic data that were captured and analyzed the following; the photosynthetically active radiation, rain/precipitation, temperature, transpiration, evaporation, water intercepted by trees, avoided a runoff by trees, potential evaporation by trees, isoprene and monoterpene by



trees. The tree benefits of a green, low carbon and sustainable environment within the context of biodiversity conservation can not be downplayed considering carbon storage, carbon sequestration, hydrology effects, pollution removal, oxygen production, and volatile organic compounds (VOCs).

## 6. Conclusions

Urban trees and bushes, on the other hand, help to reduce surface runoff by doing so, it enhances the ecosystem sustainability and purifies the air quality. Trees and bushes collect rainwater, while their root systems aid in absorption and soil retention. The research site's trees and bushes assist to minimize runoff by 1.85 billion cubic meters per year. Local weather from the user-designated weather station is used to estimate avoided runoff. The total yearly precipitation in 2018 was 248.92 mm, and the gross oxygen produced was also 740.9 kg/yr according to the data gathered for the year 2018 which has slightly increased or decreased as the case may be for the recent years. However, this is relative compared to the remaining regions of the country most especially the south-eastern and south-western regions where the volume of rainfall is higher and the amount of sunshine is low. The study also reveals that the volume of oxygen production reduces according to the individual trees and the leaf area annually(kg/yr) and that declines year after year since the recognition of Kainji national park and the immediate forest reserves(nature-protected areas) around the host communities.

This study concludes by stating the need to develop national parks and nature-protected departments and/or forest management committees to help improve biodiversity conservation, forest, and urban air quality. The conservation strategies can come in the form of strict legislation or an increase in the number of healthy flora and fauna. The need to sustain large, healthy trees can not be overemphasized. The usage of fossil fuels to maintain vegetation is being reduced. Experts in conservation must plant trees in energy-saving sites, as well as trees to shade wooded regions. The provision of sufficient water so that the park does not suffer from a long drought or water deficit might result in the extinction of trees and species. The elimination of air pollution by urban trees is equally critical in the maintenance of protected forests. According to this study, the areas around national parks should have a high population density and urbanization encroachment since multiple human activities harm the parks. Deforestation, uncontrolled burning, and illegal grazing are among the human effects that are particularly prominent in the Kainji National Park's Zugurma zone. Illegal hunting has resulted in relatively low concentrations of wild animals. Due to the sheer large amount of illicit fishing that takes place in and around Kainji Lake, the lake's fish farming industry has experienced a significant and incremental loss in the past years.

Remotely-sensed information usually provided a good presentation of national parks and protected areas changing LULCs. The aerial photographs are necessary research tools for both mapping and threat identifications. This can also help to achieve biodiversity evaluation and environmental impact assessment. It is also an indication that future strategies of conserving biodiversity in national parks should focus as much on both the community-based participatory approach and the socio-economic dimension of biodiversity conservation while also exploring deeply the scientific study of species(biota) and habitats(ecosystems). At the national level, there have to be strict government policies against illegal logging of forest wood and non-wood and timber products and illegal poaching activities causing deforestation in all the reserved forest areas and national parks in the country, West Africa and entire Sub-Saharan Africa.

**Author Contributions:** Conceptualization, Xiao-lan Tang; Data curation, John Adesina; Formal analysis, Xiao-lan Tang and John Adesina; Funding acquisition, Xiao-lan Tang; Methodology, John Adesina; Project administration, Xiao-lan Tang; Resources, Xiao-lan Tang; Software, John Adesina; Supervision, Xiao-lan Tang; Validation, Xiao-lan Tang and John Adesina; Visualization, Xiao-lan

Tang and John Adesina; Writing – original draft, John Adesina; Writing – review & editing, Xiao-lan Tang and John Adesina. X. T. and J. A. have both read and agreed to the submitted version of the manuscript.

**Funding:** This research received no external funding.

**Acknowledgements:** The authors express sincere appreciation to the editorial team and reviewers for reviewing this manuscript.

**Conflicts of Interest:** The authors declare no conflict of interest.

## References

1. Conservation International. Retrieved from <https://www.yumpu.com/en/document/view/37491711/annual-report-2008-library-conservation-international> (2007). (accessed on 1 December 2021).
2. United Nations Environment Programme, World Conservation Monitoring Centre. Kainji Lake National Park". Archived from the original on 30 September 2007. DOI: 10.9734/arrb/2021/v36i830417.
3. Kapos, Valerie, Werner A. Kurz, Toby Gardner, Joice Ferreira, Manuel Guariguata, Lian Pin Koh, Stephanie Mansourian. "Impacts of forest and land management on biodiversity and carbon." IUFRO World Series Volume 31, p. 53-80. 31 (2012): 53-80. <https://www.fs.usda.gov/treearch/pubs/47890>. (accessed on 1 December 2021).
4. Eagles, Paul FJ, and Stephen F. McCool. Tourism in national parks and protected areas: Planning and management. Cabi, 2002. Retrieved from <https://books.google.com/books>, 2021. (accessed on 1 December 2021).
5. Brown, Jessica, and Brent Mitchell. "Extending the reach of national parks and protected areas: Local stewardship initiatives." In National parks and protected areas, pp. 103-116. Springer, Berlin, Heidelberg, 1997. DOI: 10.1007/978-3-642-60907-7\_9.
6. Clerici, Nicola, Camilo Salazar, Carolina Pardo-Díaz, Chris D. Jiggins, James E. Richardson, and Mauricio Linares. "Peace in Colombia is a critical moment for Neotropical connectivity and conservation: Save the northern Andes–Amazon Biodiversity Bridge." Conservation Letters 12, no. 1 (2019): e12594. <https://doi.org/10.1111/conl.12594>.
7. Mittermeier, Russell A. "Conservation International and biodiversity conservation." Nature 405, no. 6783 (2000): 254-254. DOI: <https://doi.org/10.1038/35012266>.
8. Mallon, Cyrus A., Franck Poly, Xavier Le Roux, Irene Marring, Jan Dirk van Elsas, and Joana Falcão Salles. "Resource pulses can alleviate the biodiversity–invasion relationship in soil microbial communities." Ecology 96, no. 4 (2015): 915-926. <https://doi.org/10.1890/14-1001.1>.
9. International Union for Conservation of Nature, International Union for Conservation of Nature, Natural Resources. Species Survival Commission and IUCN Species Survival Commission. IUCN Red List categories and criteria. IUCN, 2001. Retrieved from <https://books.google.com/books>. (accessed on 1 December 2021).
10. Imarhiagbe, Odoligie, Wisdom Oghenevwogaga Egboduku, and Beluchukwu Joseph Nwankwo. "A review of the biodiversity conservation status of Nigeria." Journal of Wildlife and Biodiversity 4, no. 1 (2020): 73-83. 10.22120/JWB.2019.115501.1096. (accessed on 1 December 2021).
11. Akindele, Emmanuel O., Michael C. Ekwemuka, Paul Apeverga, Tajudeen O. Amusa, Samuel Olajuyigbe, Oluwakayode M. Coker, Fatsuma Olaleru et al. "Assessing awareness on biodiversity conservation among Nigerians: the Aichi Biodiversity Target 1." Biodiversity and Conservation 30, no. 7 (2021): 1947-1970. DOI: <https://doi.org/10.1007/s10531-021-02175-x>.
12. Radić, Boris, and Suzana Gavrilovic. "Natural Habitat Loss: Causes and Implications of Structural and Functional Changes." Life on Land (2021): 699-712. DOI: [https://doi.org/10.1007/978-3-319-95981-8\\_6](https://doi.org/10.1007/978-3-319-95981-8_6).
13. Mukherjee, Sudeshna. "Globalisation and the political economy of protected areas." Globalisation, Environment and Social Justice. Routledge India, 2018. 109-129. <https://www.taylorfrancis.com/chapters/edit/10.4324/9780429455766-5/globalisation-political-economy-protected-areas-sudeshna-Mukherjee>. (accessed on 1 December 2021).
14. Day, Jon, Nigel Dudley, Marc Hockings, Glen Holmes, Dan d'A. Laffoley, Sue Stolton, and Susan M. Wells. Guidelines for applying the IUCN protected area management categories to marine protected areas. IUCN, 2012. <http://dx.doi.org/10.25607/OBP-694>.
15. Ortiz, María José. "Aichi biodiversity targets direct and indirect drivers of biodiversity loss." Environmental Law Review 13, no. 2 (2011): 100-106. <https://doi.org/10.1350/enlr.2011.13.2.121>.
16. Newbold, Tim, Georgina L. Adams, Gonzalo Albaladejo Robles, Elizabeth H. Boakes, Guilherme Braga Ferreira, Abbie SA Chapman, Adrienne Etard et al. "Climate and land-use change homogenise terrestrial biodiversity, with consequences for ecosystem functioning and human well-being." Emerging Topics in Life Sciences 3, no. 2 (2019): 207-219. <https://doi.org/10.1042/ETLS20180135>.
17. Essl, Franz, Guillaume Latombe, Bernd Lenzner, Shyama Pagad, Hanno Seebens, Kevin Smith, John RU Wilson, and Piero Genovesi. "The Convention on Biological Diversity (CBD)'s Post-2020 target on invasive alien species—what should it include and how should it be monitored?." NeoBiota 62 (2020): 99. <https://neobiota.pensoft.net/article/53972/download/pdf/>. (accessed on 1 December 2021).

18. Morgera, Elisa. "Dawn of a New Day: The Evolving Relationship between the Convention on Biological Diversity and International Human Rights Law." *Wake Forest L. Rev.* 53 (2018): 691. [https://heinonline.org/hol-cgi-bin/get\\_pdf.cgi?handle=hein.journals/wflr53&section=30](https://heinonline.org/hol-cgi-bin/get_pdf.cgi?handle=hein.journals/wflr53&section=30). (accessed on 1 December 2021).
19. Prip, Christian. "The Convention on Biological Diversity as a legal framework for safeguarding ecosystem services." *Ecosystem Services* 29 (2018): 199-204. <https://doi.org/10.1016/j.ecoser.2017.02.015>.
20. Opoku, Alex. "Biodiversity and the built environment: Implications for the Sustainable Development Goals (SDGs)." *Resources, conservation and recycling* 141 (2019): 1-7. <https://doi.org/10.1016/j.resconrec.2018.10.011>.
21. Osunsina, I. O. O., J. Osunsina, O. O. Oduntan, Y. Oladiran, and O. T. Moyaki. "Awareness and perception of climate change and variability among indigenous people living around Nigerian national parks." *African Journal of Agriculture Technology and Environment* Vol 8, no. 1 (2019): 47-61. <https://www.researchgate.net/profile/Israel-Osunsina/publication/.pdf>. (accessed on 1 December 2021).
22. Elijah, Elizabeth, Vincent N. Ojeh, Anita H. Philip, M. Maaku Joshua, and Gabriel Bonchak. "Land Transformation of Tropical Forest Conservation of Gashaka-Gumti National Park, Nigeria from 1987-2014." *Asian Journal of Environment & Ecology* (2019): 1-17. [https://www.researchgate.net/publication/332975202\\_Land\\_Transformation\\_of\\_Tropical\\_Forest\\_Conservation\\_of\\_Gashaka-Gumti\\_National\\_Park\\_Nigeria\\_from\\_1987-2014](https://www.researchgate.net/publication/332975202_Land_Transformation_of_Tropical_Forest_Conservation_of_Gashaka-Gumti_National_Park_Nigeria_from_1987-2014). (accessed on 1 December 2021).
23. Brankov, Jovana, Tamara Jojić Glavonjić, Ana Milanović Pešić, Marko D. Petrović, and Tatiana N. Tretiakova. "Residents' perceptions of tourism impact on the community in national parks in Serbia." *European countryside* 11, no. 1 (2019): 124-142. [https://www.researchgate.net/publication/332456114\\_Residents'\\_Perceptions\\_of\\_Tourism\\_Impact\\_on\\_Community\\_in\\_National\\_Parks\\_in\\_Serbia](https://www.researchgate.net/publication/332456114_Residents'_Perceptions_of_Tourism_Impact_on_Community_in_National_Parks_in_Serbia). (accessed on 1 December 2021).
24. Convention on Biological Diversity Secretariat of the Convention on Biological Diversity (2007). *Year in Review 2006*. Montreal. Retrieved from <https://www.cbd.int/doc/reports/cbd-report-2006-en.pdf>. (accessed on 1 December 2021).
25. Dwyer, John F., and David J. Nowak. "A national assessment of the urban forest: An overview." In *Society of American Foresters 1999 National Convention* Portland, Oregon. p. 157-162. (2000). 2000. [https://www.researchgate.net/publication/279562620\\_Sustaining\\_urban\\_forests](https://www.researchgate.net/publication/279562620_Sustaining_urban_forests). (accessed on 1 December 2021).
26. Rana, Krishna, Munesh Kumar, and Amit Kumar. "Assessment of annual shoot biomass and carbon storage potential of *Grewia optiva*: An approach to combat climate change in Garhwal Himalaya." *Water, Air, & Soil Pollution* 231, no. 9 (2020): 1-13. <https://doi.org/10.1007/s11270-020-04825-2>.
27. Nunes, Leonel JR, Catarina IR Meireles, Carlos J. Pinto Gomes, and Nuno Almeida Ribeiro. "Forest contribution to climate change mitigation: Management oriented to carbon capture and storage." *Climate* 8, no. 2 (2020): 21. <https://doi.org/10.3390/cli8020021>.
28. Tschora, Héloïse, and Francesco Cherubini. "Co-benefits and trade-offs of agroforestry for climate change mitigation and other sustainability goals in West Africa." *Global Ecology and Conservation* 22 (2020): e00919. <https://doi.org/10.1016/j.gecco.2020.e00919>.
29. Goodwin, Marissa J., Malcolm P. North, Harold SJ Zald, and Matthew D. Hurteau. "Changing climate reallocates the carbon debt of frequent-fire forests." *Global Change Biology* 26, no. 11 (2020): 6180-6189. <https://doi.org/10.1111/gcb.15318>.
30. Jovanelly, T. J., L. Rodríguez-Montero, R. Sánchez-Gutiérrez, L. Mena-Rivera, and D. Thomas. "Evaluating watershed health in Costa Rican national parks and protected areas." *Sustainable Water Resources Management* 6, no. 5 (2020): 1-14. <https://doi.org/10.1007/s40899-020-00431-6>.
31. Abd-Elaty, Ismail, Alban Kuriqi, and Abeer El Shahawy. "Environmental rethinking of wastewater drains to manage environmental pollution and alleviate water scarcity." *Natural Hazards* (2021): 1-28. <https://doi.org/10.1007/s11069-021-05040-w>.
32. Sikdar, Pradip K. "Environmental Management: Issues and Concerns." *Environmental Management: Issues and Concerns in Developing Countries* (2021): 1-21. DOI: 10.1007/978-3-030-62529-0\_1.
33. Thakholi, Lerato. "Conservation labour geographies: Subsuming regional labour into private conservation spaces in South Africa." *Geoforum* 123 (2021): 1-11. <https://doi.org/10.1016/j.geoforum.2021.04.019>.
34. Cotillon, Suzanne E. *West Africa land use and land cover time series*. No. 2017-3004. US Geological Survey, 2017. <https://doi.org/10.3133/fs20173004>.
35. Akodéwou, Amah, Johan Oszwald, Slim Saïdi, Laurent Gazull, Sêmihinva Akpavi, Koffi Akpagana, and Valéry Gond. "Land use and land cover dynamics analysis of the Togodo Protected Area and its surroundings in Southeastern Togo, West Africa." *Sustainability* 12, no. 13 (2020): 5439. <https://doi.org/10.3390/su12135439>.
36. Bah, Omar Ali, Tidiani Kone, Sidat Yaffa, and Mamadou Lamine Ndiaye. "Land use and land cover dynamics in central river region of The Gambia, West Africa from 1984 to 2017." *American Journal of Modern Energy* 5, no. 2 (2019): 5-18. DOI: 10.11648/j.ajme.20190502.11.
37. Reid, Robin S., Russell L. Kruska, Nyawira Muthui, Andualet Taye, Sara Wotton, Cathleen J. Wilson, and Woudyalew Mulatu. "Land-use and land-cover dynamics in response to changes in climatic, biological and socio-political forces: the case of southwestern Ethiopia." *Landscape Ecology* 15, no. 4 (2000): 339-355. <https://doi.org/10.1023/A:1008177712995>.



38. Ouedraogo, Issa, M. Tigabu, P. Savadogo, H. Compaoré, P. C. Odén, and J. M. Ouadba. "Land cover change and its relation with population dynamics in Burkina Faso, West Africa." *Land Degradation & Development* 21, no. 5 (2010): 453-462. <https://doi.org/10.1002/ldr.981>.
39. Houessou, Laurent Gbenato, Oscar Teka, Ismaïla Toko Imorou, Anne Mette Lykke, and Brice Sinsin. "Land use and land-cover change at " W" Biosphere Reserve and its surrounding areas in the Benin Republic (West Africa)." *Environment and Natural Resources Research* 3, no. 2 (2013): 87. DOI:10.5539/enrr.v3n2p87.
40. Kumi, Samuel, Patrick Addo-Fordjour, Bernard Fei-Baffoe, Ebenezer JD Belford, and Yaw Ameyaw. "Land use land cover dynamics and fragmentation-induced changes in woody plant community structure in a mining landscape, Ghana." *Trees, Forests and People* 4 (2021): 100070. <https://doi.org/10.1016/j.tfp.2021.100070>.
41. Makwinja, Rodgers, Emmanuel Kaunda, Seyoum Mengistou, and Tena Alamirew. "Impact of land use/land cover dynamics on ecosystem service value—a case from Lake Malombe, Southern Malawi." *Environmental Monitoring and Assessment* 193, no. 8 (2021): 1-23. <https://doi.org/10.1007/s10661-021-09241-5>.
42. Tiando, Damien Sinonmatohou, Shougeng Hu, Xin Fan, and Muhammad Rashid Ali. "Tropical coastal land-use and land cover changes impact on ecosystem service value during rapid urbanization of Benin, West Africa." *International Journal of Environmental Research and Public Health* 18, no. 14 (2021): 7416. <https://doi.org/10.3390/ijerph18147416>.
43. Gbedzi, Divine Dodzi, Eric Antwi Ofosu, Eric Mensah Mortey, Abena Obiri-Yeboah, Emmanuel Kwesi Nyantakyi, Ebenezer Kwadwo Siabi, Faisal Abdallah, Martin Kyereh Domfeh, and Anna Amankwah-Minkah. "Impact of mining on land use land cover change and water quality in the Asutifi North District of Ghana, West Africa." *Environmental Challenges* (2022): 100441. <https://doi.org/10.1016/j.envc.2022.100441>.
44. Kindu, Mengistie, Degefie Tibebe, Demeke Nigussie, Thomas Schneider, Martin Döllerer, Demel Teketay, and Thomas Knoke. "Understanding Land Use/Land Cover Dynamics in and Surrounding the Ethiopian Church Forests." *State of the Art in Ethiopian Church Forests and Restoration Options* (2022): 11-30. [https://doi.org/10.1007/978-3-030-86626-6\\_2](https://doi.org/10.1007/978-3-030-86626-6_2).
45. Achugbu, Ifeanyi Chukwudi, Ayorinde A. Olufayo, Ifeoluwa A. Balogun, Elijah A. Adefisan, Jimmy Dudhia, and Edward Naabil. "Modeling the spatiotemporal response of dew point temperature, air temperature and rainfall to land use land cover change over West Africa." *Modeling Earth Systems and Environment* 8, no. 1 (2022): 173-198. <https://doi.org/10.1007/s40808-021-01094-8>.
46. Tang, X.; Adesina, J.A. Integrated Watershed Management Framework and Groundwater Resources in Africa—A Review of West Africa Sub-region. *Water* 2022, 14, 288. <https://doi.org/10.3390/w14030288>.