

Article

Effects of irrigation and fertilization on the morpho-physiological traits of *Populus sibirica* Hort. Ex Tausch and *Ulmus pumila* L. in the semi-arid steppe region of Mongolia

Ser-Oddamba Byambadorj^{1,2}, Byung Bae Park^{2,*}, Jonathan O. Hernandez³, Enkhchimeg Tsedensodnom^{1,4}, Otgonsaikhan Byambasuren¹, Antonio Montagnoli⁵, Donato Chiatante⁵, and Batkhuu Nyam-Osor^{1,*}

¹ Laboratory of Forest Genetics and Ecophysiology, School of Engineering and Applied Sciences, National University of Mongolia, Ulaanbaatar 14201, Mongolia; seroddamba@num.edu.mn (S.-O.B.); enkhchimeg1120@gmail.com (E.T.); saikhnaa80@gmail.com (O.B.)

² Department of Environment and Forest Resources, College of Agriculture and Life Science, Chungnam National University, Daejeon 34134, Korea;

³ Department of Forest Biological Sciences, College of Forestry and Natural Resources, University of the Philippines, Los Baños 4031, Philippines; johernandez2@up.edu.ph (J.O.H.)

⁴ Institute of Geography and Geocology, Mongolian Academy of Sciences, Ulaanbaatar 15170, Mongolia;

⁵ Department of Biotechnology and Life Science, University of Insubria, Via Dunant, 3 – 21100 Varese, Italy; antonio.montagnoli@uninsubria.it (A.M); donato.chiatante@uninsubria.it (D.C.)

* Correspondence: batkhuu@num.edu.mn (B.N.-O.); bbpark@cnu.ac.kr (B.B.P.)

Abstract: Desertification is impeding the implementation of reforestation efforts in Mongolia. Many of these efforts have been unsuccessful due to lack of technical knowledge on water and nutrient management strategies, limited financial support, and short-lived rainfall events. We investigated the effects of irrigation and fertilization on the morpho-physiological traits of *Populus sibirica* Hort. Ex Tausch and *Ulmus pumila* L. and to suggest irrigation and fertilization strategies for reforestation. Different irrigation and fertilizer treatments were applied: no irrigation, 2 L h⁻¹, 4 L h⁻¹ and 8 L h⁻¹ of water; no fertilizer, 2 L h⁻¹ + NPK, 4 L h⁻¹ + NPK, and 8 L h⁻¹ + NPK; and no compost, 2 L h⁻¹ + compost, 4 L h⁻¹ + compost, and 8 L h⁻¹ + compost. The leaf area (LA) and specific leaf area (SLA) of both species responded positively to 4 L h⁻¹ and/or 8 L h⁻¹. Results also showed that the addition of either NPK or compost to 4 L h⁻¹ and/or 8 L h⁻¹ irrigation resulted in a higher LA, SLA, and leaf biomass (LB). Total chlorophyll content decreased with irrigation in both species. The same pattern was detected when a higher amount of irrigation was combined with fertilizers. Lastly, we found that both diurnal and seasonal leaf water potential of plants grown in 4 L h⁻¹ and/or 8 L h⁻¹ were significantly higher than in control plots. Therefore, 4 L h⁻¹ and/or 8 L h⁻¹ with either NPK or compost has shown to be the optimal irrigation and fertilization strategy for the species in an arid and semi-arid region of Mongolia. Results should provide us with a better understanding of tree responses to varying amounts of irrigation with or without fertilizer in pursuit of sustainable forest management in arid and semi-arid ecosystems.

Keywords: arid and semi-arid; afforestation; desertification; drought effects; compost fertilizer

1. Introduction

Mongolia is a forest-poor arid and semi-arid country, with annual precipitation of only 246.10 mm [1]. Desertification in Mongolia has proceeded rapidly and is becoming the major environmental problem impeding the success of reforestation efforts in the country [2–4]. Studies have proven that afforestation and reforestation are the most practical approaches for combatting desertification [5–7]. Thus, the Mongolian government has initiated the planting of more than 20 million of seedlings since the 1980s; however, the reforestation area remains to be lower than that of the deforested area [8,9] and many afforestation efforts have been unsuccessful [10]. The major reasons attributed to failed

afforestation efforts include lack of technical knowledge on water and nutrient management strategies, limited financial support, and short-lived rainfall events or water limitation [9,11]. Therefore, information on appropriate irrigation and fertilizer management strategies could significantly contribute to effective and sustainable afforestation and reforestation initiatives in arid and semi-arid areas like Mongolia.

The most important environmental factors affecting plant growth are moisture and nutrient availability and their interactions in soil. Drought alters the photosynthetic machinery of plants, chlorophyll synthesis, biomass allocation, and other major physiological activities of plants [12–14]. The interacting effects of water shortage and nutrient deficiency limit plant growth and forest plantation productivity, particularly in desertified areas [15,16]. An experiment has shown that both fertilizer and irrigation amount explained the increase in chlorophyll content of plants under limited irrigation conditions in China, such that the no fertilizer and irrigation treatments resulted in the lowest chlorophyll content [12]. A study has also found that the medium amount of both fertilizer and water resulted in higher growth performance, the number of new shoots, chlorophyll content, and leaf soluble sugar concentration compared with high and low amounts of fertilizer and irrigation treatments [17]. Further, in a study by Basal and Szabo [18], the morpho-physiological traits were significantly altered by both the rates of fertilization and irrigation regimes. Some plants have adaptive mechanisms to counteract or respond to fluctuating amounts of nutrients and soil moisture, such as plasticity development, osmoregulation, and cell turgidity even at more negative water potentials [19,20]. However, these adaptive mechanisms are still unknown to many forest tree species, particularly in arid and semi-arid areas.

In Mongolia, two of the major challenges in implementing reforestation programs include the high tree-seedling mortality during the planting stage and deterioration of soil fertility or soil nutrient management. The introduction of irrigation and fertilization to reforestation efforts in the region inevitably leads to unwanted ecological consequences, such as water table variations, salinization, and pollution, making the effort unsustainable. Thus, the objective of the study was to investigate the effects of irrigation and fertilization on the growth and morpho-physiological traits of *Populus sibirica* Hort. Ex Tausch and *Ulmus pumila* L. and to suggest optimal irrigation and fertilization strategies for using the two species in reforestation. The present study should provide us with accurate irrigation and fertilization recommendations for *P. sibirica* and *U. pumila* in pursuit of sustainable forest management in arid and semi-arid regions.

2. Results

The leaf area (LA) varied significantly by watering and fertilizer treatments in both species (Figure 1). The 4 L h⁻¹ and/or 8 L h⁻¹ irrigation treatments resulted in the highest LA compared with the CONT in 2018 and 2019 for *P. sibirica*. In both experimental periods, effects of 2 L h⁻¹, 4 L h⁻¹, and 8 L h⁻¹ on LA were similarly higher than that of CONT for *U. pumila*. The NPK with 4 L h⁻¹ and/or 8 L h⁻¹ also resulted in a significantly higher LA compared with NPK alone and 2 L h⁻¹ treatments in both species and experimental periods. A similar pattern was detected when the compost fertilizer was applied with 4 L h⁻¹ and/or 8 L h⁻¹.

The specific leaf area (SLA) was similarly higher in all watering treatments compared with CONT in *P. sibirica* in 2018 and 2019 (Figure 2). Also, the 8 L h⁻¹ added with NPK and/or compost resulted in the highest SLA of the species across treatments in both experimental periods. In the case of *U. pumila*, 8 L h⁻¹ alone and 8 L h⁻¹ + NPK or compost had the highest SLA across treatments in both 2018 and 2019 periods, except that in 8 L h⁻¹ + compost in 2019, with significantly lower SLA than the other irrigation + compost treatment.

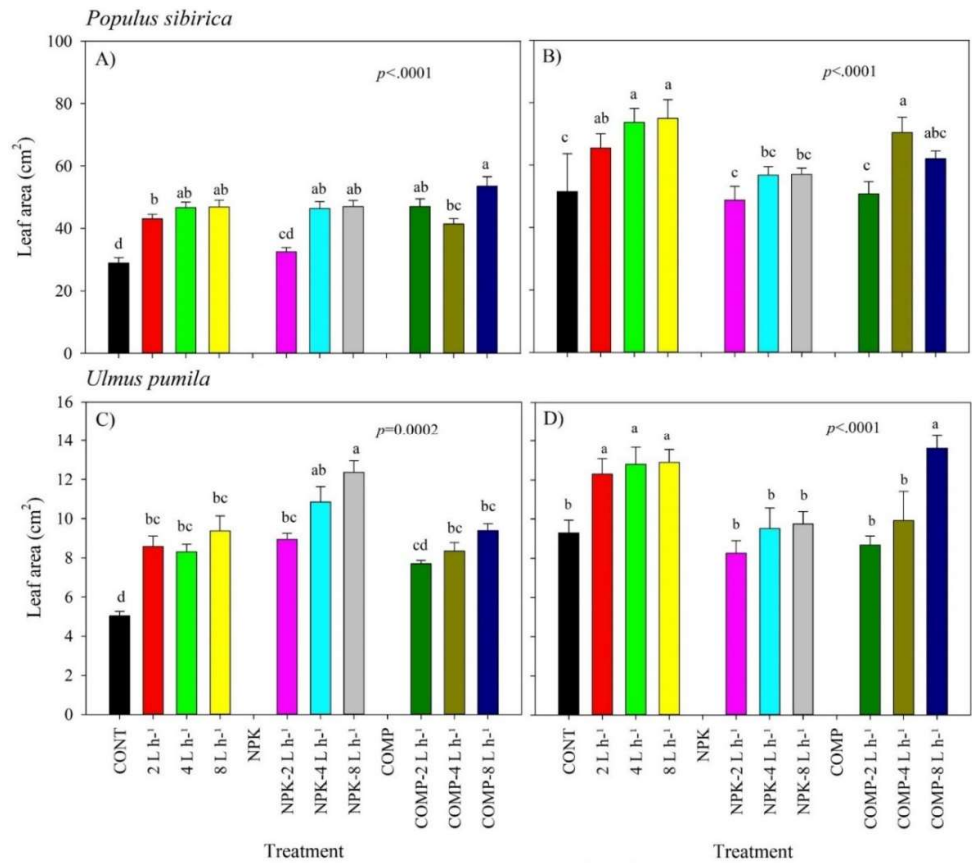


Figure 1. Leaf area (LA) of *Populus sibirica* and *Ulmus pumila* across different irrigation and irrigation + fertilizer treatments (0, 2, 4, 8 L h⁻¹, NPK, NPK+2, 4, 8 L h⁻¹, COMP, COMP+2, 4, 8 L h⁻¹) measured in July 2018 (A and C) and 2019 (B and D). Different lowercase letters within each species indicate significant differences across the treatments at $\alpha = 0.05$. Vertical bars represent standard errors.

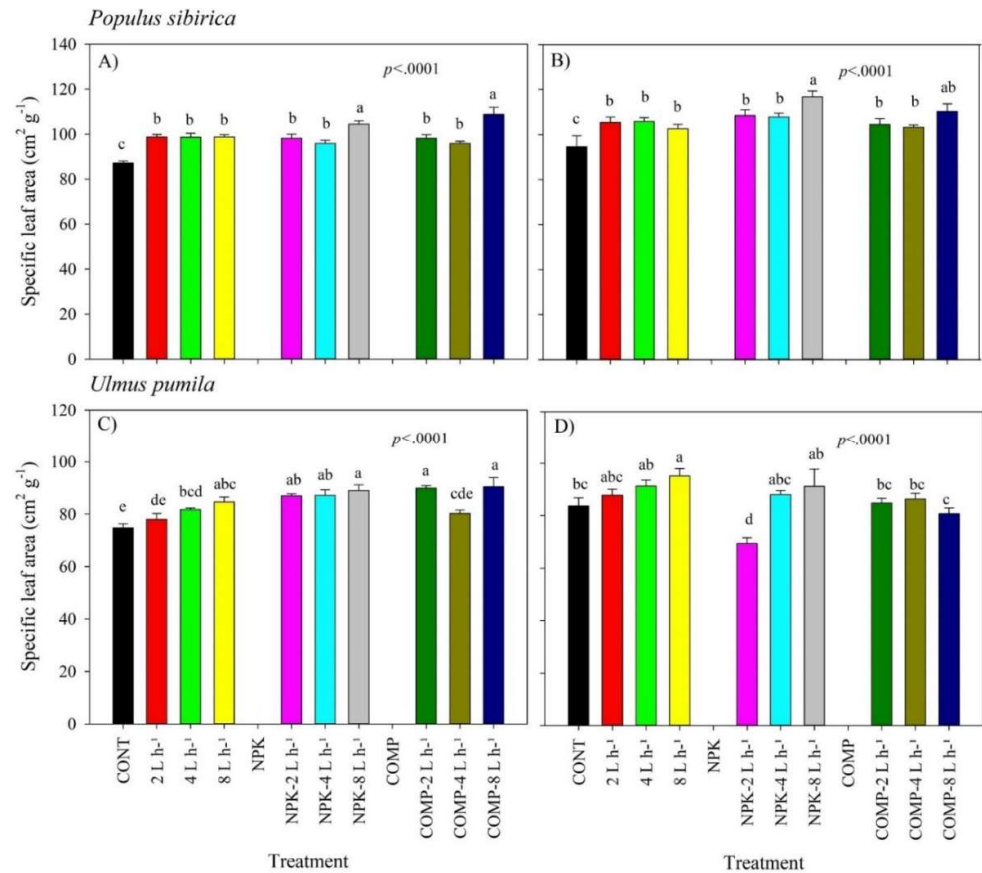


Figure 2. Specific Leaf Area (SLA) of *Populus sibirica* and *Ulmus pumila* across different irrigation and irrigation + fertilizer treatments (0, 2, 4, 8 L h⁻¹, NPK, NPK+2, 4, 8 L h⁻¹, COMP, COMP+2, 4, 8 L h⁻¹) measured in July 2018 (A and C) and 2019 (B and D). Different lowercase letters within each species indicate significant differences across the treatments at $\alpha = 0.05$. Vertical bars represent standard errors.

The leaf biomass (LB) significantly increased in all irrigation treatments, especially in 8 L h⁻¹ in 2019 for *P. sibirica* (Figure 3). NPK or compost with 4 L h⁻¹ or 8 L h⁻¹ generally yielded higher LB compared with a lower amount of irrigation and CONT treatments. In *U. pumila*, irrigation treatments generally resulted in higher LB compared with CONT (Figure 3). Here the higher amount of irrigation combined with NPK or compost yielded higher leaf biomass of *U. pumila*, except the irrigation + NPK treatments in 2019.

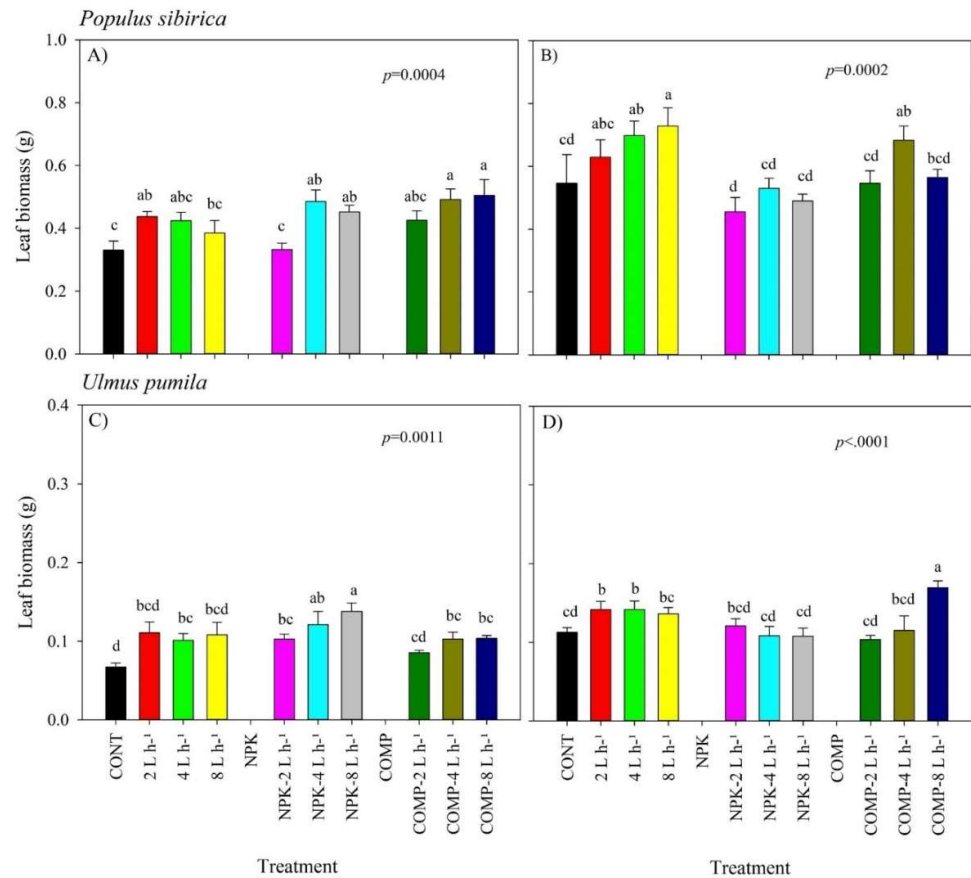


Figure 3. Leaf biomass (LB) of *Populus sibirica* and *Ulmus pumila* across different irrigation and irrigation+fertilizer treatments (0, 2, 4, 8 L h⁻¹, NPK, NPK+2, 4, 8 L h⁻¹, COMP, COMP+2, 4, 8 L h⁻¹) measured in July 2018 (A and C) and 2019 (B and D). Different lowercase letters within each species indicate significant differences among the treatments at $\alpha = 0.05$. Vertical bars represent standard errors.

The total chlorophyll content decreased as the amount of irrigation increased in both species and experimental periods (Figure 4). Similarly, higher amount of irrigation with NPK or compost generally resulted in a significantly lower total chlorophyll content in *P. sibirica*. In the case of *U. pumila*, the addition of NPK or compost also tended to decrease the total chlorophyll content, particularly in 2019. In 2018, the chlorophyll a/b ratio of *P. sibirica* was the highest in CONT across irrigation treatments but a reverse result was observed in the next experimental period (Figure 5). Effects of NPK + irrigation were similarly higher than that in CONT, especially in 2018. The 8 L h⁻¹ + compost and 4 L h⁻¹ + compost had the highest chlorophyll a/b ratio in 2018 and 2019, respectively. In the case of *U. pumila*, we did not detect a consistent pattern between two experimental periods and across irrigation and fertilizer treatments. However, the irrigation and fertilizer treatments tended to have similar effects on chlorophyll a/b ratio with that of CONT in the first year of the experiment.

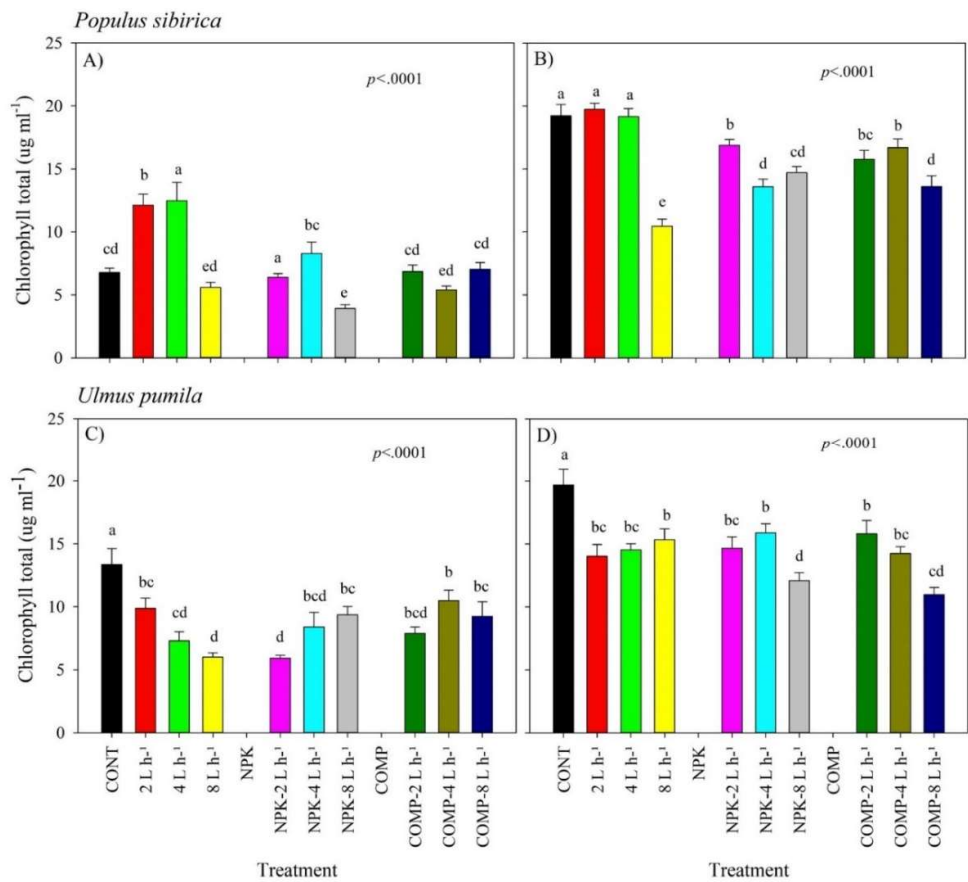


Figure 4. Total chlorophyll content of *Populus sibirica* and *Ulmus pumila* across different irrigation and irrigation + fertilizer treatments (0, 2, 4, 8 L h⁻¹, NPK, NPK+2, 4, 8 L h⁻¹, COMP, COMP+2, 4, 8 L h⁻¹) measured in July 2018 (A and C) and 2019 (B and D). Different lowercase letters within each species indicate significant differences across the treatments at $\alpha = 0.05$. Vertical bars represent standard errors.

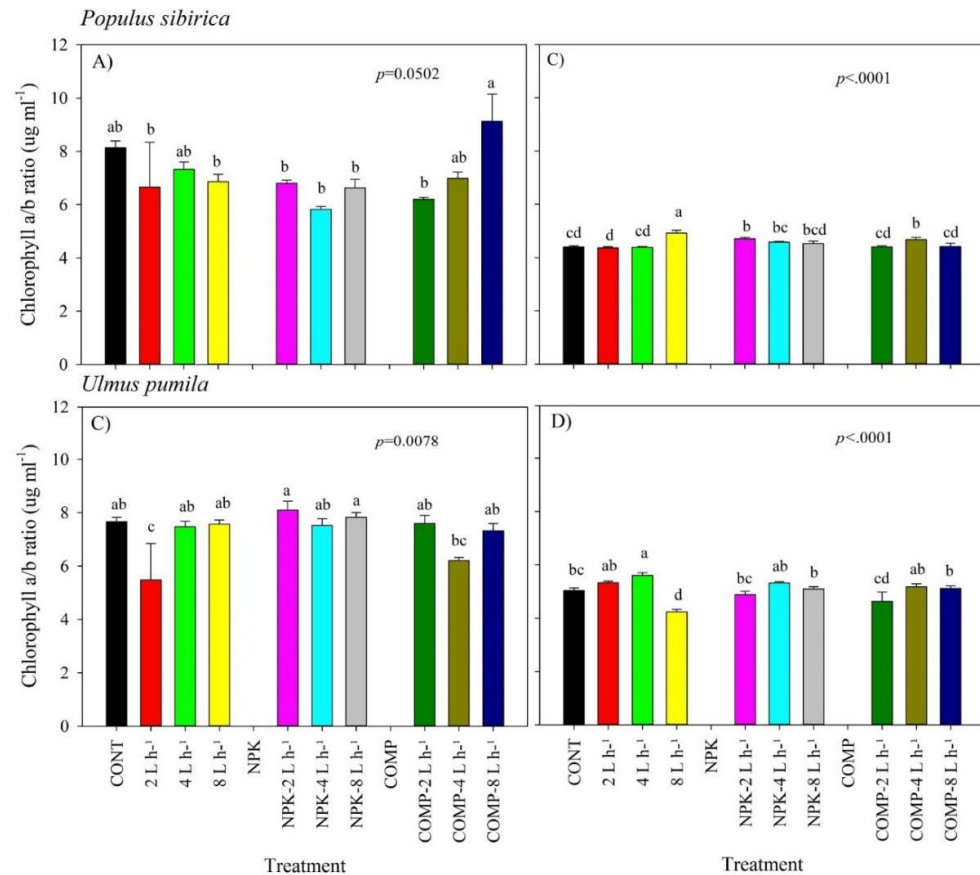


Figure 5. Chlorophyll a/b ratio of *Populus sibirica* and *Ulmus pumila* across different irrigation and irrigation + fertilizer treatments (0, 2, 4, 8 L h⁻¹, NPK, NPK+2, 4, 8 L h⁻¹, COMP, COMP+2, 4, 8 L h⁻¹) measured in July 2018 (A and C) and 2019 (B and D). Different lowercase letters within each species indicate significant differences across the treatments at $\alpha = 0.05$. Vertical bars represent standard errors.

Diurnal water potential declined to as low as -1.2 to -1.9 (Mpa) in all plots without irrigation, and this was significantly lower (more negative) than those in the irrigation treatments, particularly in 8 L h⁻¹ in both experimental periods (Figure 6). In all species, the lowest decline detected in all treatments were at 13:00 and 15:00 in 2018 and 2019, respectively. The seasonal midday (ψ_m) leaf water potential was consistently the highest at 8 L h⁻¹ followed by 4 L h⁻¹ from June to August in 2018 for *P. sibirica*. In *U. pumila*, seasonal midday (ψ_m) leaf water potentials varied significantly by treatments in August, i.e., 4 L h⁻¹ had the highest ψ_m , followed by 8 L h⁻¹ and 2 L h⁻¹, and the lowest in CONT (Table 1). In July 2019, the highest predawn (ψ_p) and midday (ψ_m) leaf water potentials of *U. pumila* were observed in 8 L h⁻¹ and/or 4 L h⁻¹ (Table 2).

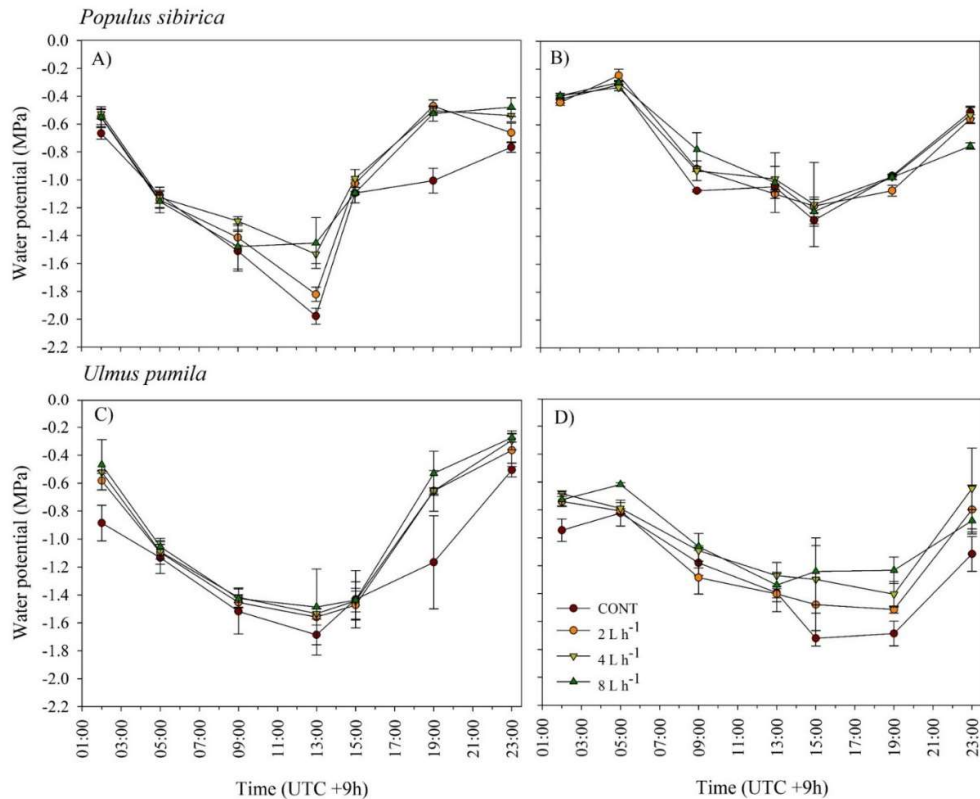


Figure 6. Diurnal variation in leaf water potential (Ψ) of *Populus sibirica* and *Ulmus pumila* across different irrigation treatments (0, 2, 4, 8 L h⁻¹) measured in July 2018 (A and C) and 2019 (B and D). Vertical bars represent standard errors.

Table 1. Seasonal variation of the predawn (ψ_p) and midday (ψ_m) leaf water potentials in *Populus sibirica* and *Ulmus pumila* across different irrigation treatments (0, 2, 4, 8 L h⁻¹) measured in 2018. Different lowercase letters indicate significant differences across the treatments at $\alpha = 0.05$.

Species	Treatment	June	July	August
<i>U. pumila</i>	ψ_p	0 L h ⁻¹	-1.366 ^a	-1.133 ^a
		2 L h ⁻¹	-1.096 ^a	-1.096 ^a
		4 L h ⁻¹	-1.091 ^a	-1.091 ^a
		8 L h ⁻¹	-1.055 ^a	-1.055 ^a
	Ψ_m	0 L h ⁻¹	-1.486 ^a	-1.686 ^a
		2 L h ⁻¹	-1.334 ^a	-1.559 ^a
		4 L h ⁻¹	-1.286 ^a	-1.534 ^a
		8 L h ⁻¹	-1.286 ^a	-1.478 ^a
<i>P. sibirica</i>	ψ_p	0 L h ⁻¹	-1.243 ^a	-1.110 ^a
		2 L h ⁻¹	-1.143 ^a	-1.144 ^a
		4 L h ⁻¹	-1.126 ^a	-1.126 ^a
		8 L h ⁻¹	-1.155 ^a	-1.155 ^a
	Ψ_m	0 L h ⁻¹	-1.977 ^c	-1.977 ^b
		2 L h ⁻¹	-1.821 ^{bc}	-1.821 ^b
		4 L h ⁻¹	-1.533 ^{ab}	-1.533 ^{ab}
		8 L h ⁻¹	-1.453 ^a	-1.453 ^a

Table 2. Seasonal variation of the predawn (ψ_p) and midday (ψ_m) leaf water potentials in *Populus sibirica* and *Ulmus pumila* across different irrigation treatments (0, 2, 4, 8 L h⁻¹) measured in 2019. Different lowercase letters indicate significant differences across the treatments at $\alpha = 0.05$.

Species	Treatment	June	July	August	
<i>U. pumila</i>	ψ_p	0 L h ⁻¹	-0.548 ^a	-0.823 ^b	-0.677 ^a
		2 L h ⁻¹	-0.520 ^a	-0.808 ^b	-0.534 ^a
		4 L h ⁻¹	-0.513 ^a	-0.789 ^b	-0.516 ^a
		8 L h ⁻¹	-0.518 ^a	-0.619 ^a	-0.582 ^a
	Ψ_m	0 L h ⁻¹	-1.071 ^a	-1.394 ^{ab}	-1.601 ^a
		2 L h ⁻¹	-1.026 ^a	-1.403 ^b	-1.570 ^a
		4 L h ⁻¹	-1.197 ^a	-1.272 ^a	-1.572 ^a
		8 L h ⁻¹	-1.145 ^a	-1.339 ^a	-1.524 ^a
<i>P. sibirica</i>	ψ_p	0 L h ⁻¹	-0.291 ^a	-0.312 ^a	-0.503 ^a
		2 L h ⁻¹	-0.270 ^a	-0.245 ^a	-0.457 ^a
		4 L h ⁻¹	-0.192 ^a	-0.331 ^a	-0.436 ^a
		8 L h ⁻¹	-0.172 ^b	-0.297 ^a	-0.575 ^a
	Ψ_m	0 L h ⁻¹	-1.457 ^b	-1.045 ^{ab}	-1.750 ^b
		2 L h ⁻¹	-1.369 ^b	-1.095 ^b	-1.620 ^{ab}
		4 L h ⁻¹	-1.398 ^b	-0.988 ^a	-1.506 ^a
		8 L h ⁻¹	-1.022 ^a	-1.014 ^{ab}	-1.550 ^{ab}

3. Discussion

3.1. Effects of irrigation and fertilizer treatments on morphological traits and growth of *P. sibirica* and *U. pumila*

In this study, LA and SLA of both species responded positively to the 4 L h⁻¹ and/or 8 L h⁻¹ irrigation treatments. Similar studies also reported positive responses of morphological traits to high soil moisture content [21,22]. Here the LA and SLA in the control plots remained to have the lowest values across treatments and years, and this confirms the results of many studies about the effects of drought on leaf traits. Specifically, water stress resulted in the lowest increase in leaf area development [11,23,24] and leaf size tended to decrease with limiting water supply [25]. A study found that leaf area was strongly negatively correlated with leaf water loss [26], suggesting that bigger leaves of *P. sibirica* and *U. pumila* in 4 L h⁻¹ and/or 8 L h⁻¹ irrigation levels may be less prone to water loss via evapotranspiration.

The efficient use of irrigation and fertilizer has recently gained much attention in reforestation efforts in arid regions because of the highly variable or limited rainfall events [11]. In this study, we revealed that 4 L h⁻¹ and/or 8 L h⁻¹ with NPK and compost positively increased LA, SLA, and LB. This can be attributed to enhanced cell division and physiological activities under water-sufficient or high turgor pressure conditions [27,28]. Our result is consistent with that of some water and fertilizer experiments conducted in drylands [27,29,30]. Similarly, Zhang and Xi [31] observed that the aboveground plant biomass increased when precipitation increased and decreased when precipitation fluctuated significantly. A significant increase in aboveground biomass and leaf area was also detected when the plants have been supplied with nitrate, and such a result was associated with the effects of nitrate on cell turgor pressure [32]. Thus, the current result suggests that sustainable reforestation in arid and semi-arid regions in Mongolia can be achieved with the use of a combination of the appropriate amount of water and fertilizer. This is because excess water and application of both organic and inorganic fertilizers can exacerbate land degradation and environmental damage in arid and semi-arid regions.

3.2. Effects of irrigation and fertilizer treatments on physiological traits of *P. sibirica* and *U. pumila*

Contrary to our expectation, we showed that the total chlorophyll content decreased as the amount of irrigation increased in both experimental periods, and the addition of NPK or compost to a higher amount of irrigation also generally resulted in a significantly lower total chlorophyll content in all species. CONT and/or lower amount of irrigation has generally shown to have a higher total chlorophyll content. The result of the present study agrees with the findings of Hassanzadeh et al. [33], who reported that irrigating the plots at flooding condition led to a decrease in chlorophyll content and senescence, whereas drought stress increased chlorophyll content. Our result is attributable to the effects of moisture on photochemical activity and chlorophyll synthesis in leaves [34,35]. Conditions such as excess water and nutrient availability may have hindered the chlorophyll synthesis of irrigated plants, particularly those grown in 4 L h⁻¹ and/or 8 L h⁻¹ with NPK and compost. Several studies explained that low levels of chlorophyll in leaves might be poorly related to water conditions in the field because of interacting effects of the other environmental factors, such as soil characteristics, light, and air temperature [36,37]. A change in the amount of far-red radiation and light reflectance of leaves was also cited as one of the reasons for the increase in chlorophyll content with increasing soil moisture [38]. A study by Hamblin et al. [39] also mentioned that the reduction in leaf chlorophyll content can reduce the heat load, thereby reducing water requirement to cool leaves.

Nitrogen is an essential part of the chlorophyll molecule, hence, the lack of it in the mineral nutrient supply may significantly affect chlorophyll synthesis in plants. Here we revealed that adding NPK or compost to a higher amount of irrigation significantly decreased the chlorophyll content compared with CONT in all species, implying that some factors such as mineralization, leaching, and volatilization may have come into the picture. Because of the high amount of irrigation, the applied fertilizer may have been leached out, leading to N deficiency in plants. Another possible reason is that the high amount of irrigation may have facilitated the mineralization of the applied fertilizer in the soil, leading to a luxury consumption of N by plants. Such a luxury consumption produced excess N which may have not metabolized into functional or structural compounds necessary for chlorophyll synthesis. One study, however, reported that the stress-induced loss of chlorophyll was not linked to a lack of nitrogen [40]. This is probably because of the effect of water stress on nitrogen mineralization and uptake. Further, the significant reduction in leaf chlorophyll content may be a consequence of increasing the LA, SLA, and LB of the plants grown in a higher amount of irrigation with NPK or compost. A study has shown that reduced leaf chlorophyll content per unit leaf area was associated with high growth performance [39,41].

Lastly, we found that the diurnal leaf water potential of plants grown in 4 L h⁻¹ and/or 8 L h⁻¹ were significantly higher than those in CONT plots. Seasonal leaf water potentials were also generally higher in 4 L h⁻¹ and/or 8 L h⁻¹ during summer or growing season in 2018 and 2019. Noticeably, the decline in Ψ in 4 L h⁻¹ and/or 8 L h⁻¹ plots particularly from 13:00 to 15:00 time periods was able to increase up to the normal condition, suggesting effective recovery of Ψ from diurnal water stress. Our findings were consistent with the results reported in many studies (e.g., [42,43]). Results further imply that both species responded positively to irrigation treatments and negatively to water shortage, indicating strong plasticity to water availability fluctuations. The species has shown an ability to cope with stressful events in arid and semi-arid ecosystems that is likely to occur annually, particularly during growing season. Such an ability can be used to optimize irrigation applications depending on the actual plant's needs and status.

4. Materials and Methods

4.1. Site description

The study was conducted in Lun soum, Tuv province, Mongolia ($47^{\circ}52'15.43''\text{N}$, $105^{\circ}10'46.4''\text{E}$), which is 135 km west of Ulaanbaatar, with elevation of 1130 m a.s.l (Figure 7). The study area is characterized by Middle Khalkha dry steppe, which is a region that has been greatly degraded by intense livestock grazing [44]. The site is dominated by xerophytic and mesoxerophytic graminoids, such as *Stipa sareptana subsp. krylovii* Roshev., *Cleistogenes squarrosa* Trin., and *Leymus chinensis* Trin. [45]. Kastanozems type (Loamic), characterized by a lack of profile differentiation in different horizons [46], is the soil type in the study site. The topsoil and subsoil hardness are 4.5 kg cm^{-2} and 1.7 kg cm^{-2} , respectively [47].

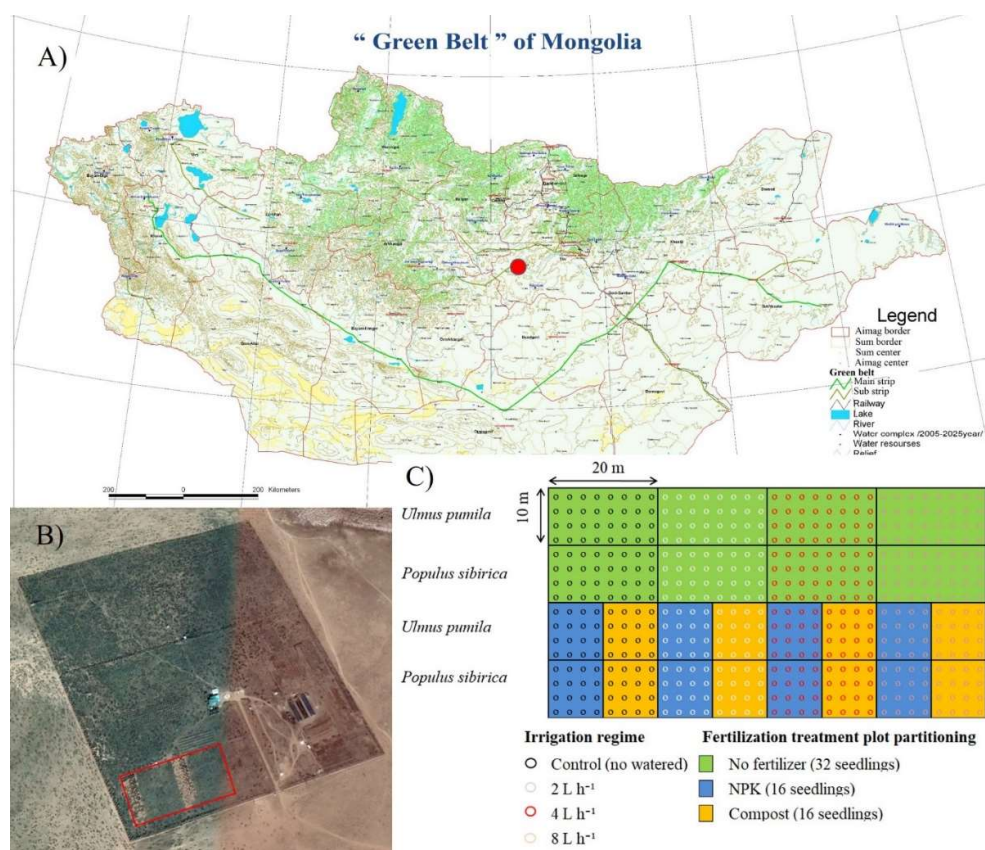


Figure 7. a) Location map of the study site in Mongolia showing b) close-up aerial photo of the study area; and c) experimental setup.

Generally, May or June is the growing season in Mongolia, and it ceases when the first frost event occurs in September [48]. During the conduct of the experiment, the mean temperature and the mean precipitation were 16.78°C and 183–222 mm, respectively. Environmental data was obtained using the HOBO climate data logger installed in the study site (Figure 8). The highest mean temperature (i.e., 21.4°C) and precipitation (i.e., 93.8 mm) were detected in July and June. The lowest mean temperature (i.e., 9.9°C) and precipitation (i.e., 0 mm) were detected in May and September, respectively (Figure 8).

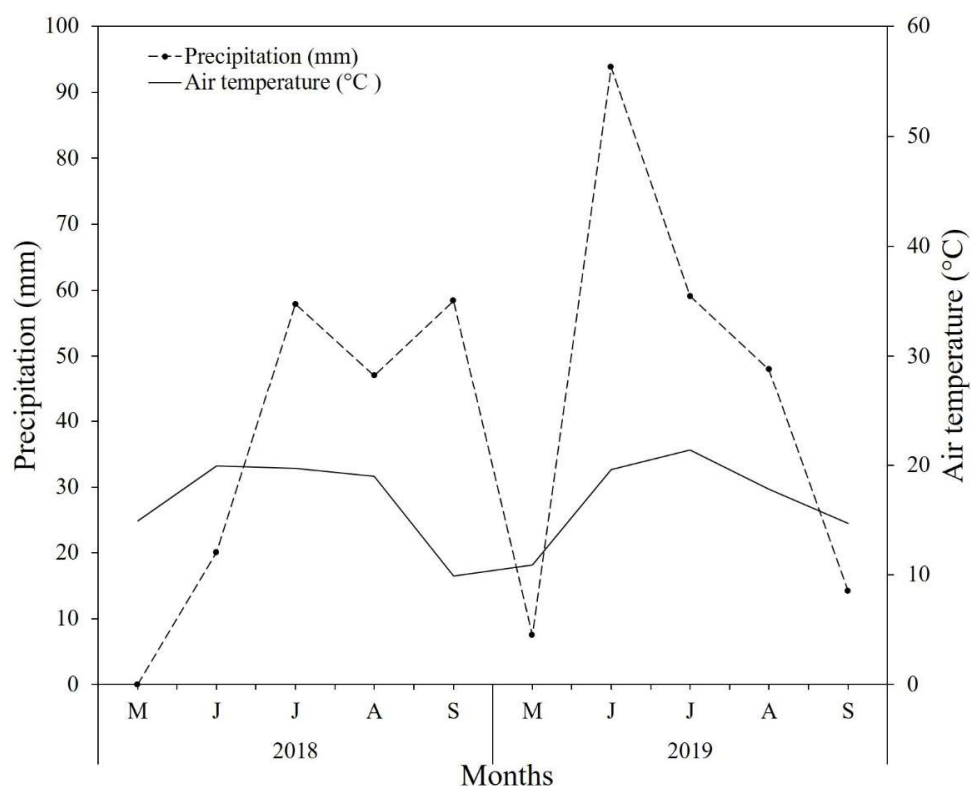


Figure 8. Mean monthly air temperature (solid line) and precipitation (broken, dotted line) in the experimental site during the conduct of the experiment (i.e., May–September 2018–2019).

4.2. Experimental materials and design

We used a total of 512 two-year-old nursery-growth seedlings of *Populus sibirica* and *Ulmus pumila* with initial root collar diameter (RCD) and the height of 0.51 ± 0.02 mm and 68 ± 2.94 cm and 0.33 ± 0.01 mm and 51 ± 1.14 cm, respectively. The species have an initial root length of 21.50 to 25.9 cm [49]. Thereafter, seedlings were planted into round holes which are 60–70 cm deep and 50–60 cm wide, and were irrigated using the same amount of water across treatments during the acclimatization period. After one month, four different irrigation regimes were applied: no irrigation (control, 0 L h^{-1}), $2 \text{ L h}^{-1} = 0.25 \text{ mm m}^{-2}$, $4 \text{ L h}^{-1} = 0.5 \text{ mm m}^{-2}$, $8 \text{ L h}^{-1} = 1.0 \text{ mm m}^{-2}$. A 5-hour duration of watering was done twice a week throughout the course of the experiment, using an irrigation hose system connected to a water tank with a capacity of 25 tons. We also used two different types of fertilizers (i.e., 120 and 500 g tree⁻¹ of NPK and compost), which were mixed with natural soil to fill the holes before transplanting. NPK consisted of solid granules of the mixture of nitrogen, phosphorus and potassium following the ratio of 12:16:4. The compost consisted of well-decomposed sheep manure with the following chemical characteristics: 7.4 pH; 18.0–25.0% organic matter content, 5.0–7.0 g kg⁻¹ nitrogen content, and 9.29, 7.02, 9.18 and 0.05 g kg⁻¹ of total Ca, Mg, K, Na contents, respectively). A total of twelve plots (20 m × 10 m in area) were established for each species in the study site, i.e., 4 plots for irrigation alone treatments, 4 plots for irrigation + NPK fertilizer treatments, and 4 plots for irrigation + compost treatments. These plots were positioned following a 2.5-m distance between trees and a 2.5-m distance between rows (Figure 7c). We used 32 seedlings for irrigation alone treatments and 16 trees for irrigation + fertilizer/compost treatments [50].

4.3. Measurements of morpho-physiological traits

We collected 1200 healthy and fully expanded leaves (i.e., 20 leaves \times 3 replicates \times 10 treatments \times 2 species) for the determination of leaf area (LA), specific leaf area (SLA), and leaf biomass (LB). We did not collect leaves from controlled plots because all seedlings, if not already dead, were not in good condition at the end of the experiment. Collected samples were first sealed in zip lock bags and stored in a cold container during transport until further analysis in the laboratory. The leaves were photo-scanned using an HP LaserJet scanner (M1132 MFP, Idaho, USA) with a 600 dpi resolution. ImageJ processing software was used to analyze the LA of the samples collected following the procedures in Schneider et al. [51] and the modified procedure in Hernandez et al. [52].

In terms of LB and SLA, leaves were first oven-dried at 65 °C for three days and then weighed using the high precision electronic scale ($d = 0.001$ g, Discovery Semi-Micro and Analytical Balance, Ohaus Corp., Switzerland). The SLA was calculated using the procedure and equation (i.e., $SLA = LA \text{ (cm}^2\text{)}/LDM \text{ (mg)}$) in Li et al. [53].

Across treatments, we randomly selected 18 seedlings (i.e., 3 seedlings \times 3 replicates \times 2 species), from which 1-5 healthy, fully expanded and sun-exposed leaves were collected for chlorophyll content determination. The samples were first put in an ice-cooled box until actual extraction in the laboratory using the spectrophotometry method. A known amount of leaf tissue (i.e., 0.10 g) was ground and then suspended in 10 mL of 80% acetone, mixed well and kept at 4 °C overnight in the dark, centrifuged (5000 rpm, 2 minutes), and obtained the supernatant [54]. Thereafter, the absorbance was read at 663 and 646 nm in Spectrophotometer (Genesys 10S UV-Vis Thermo Science, USA). The total chlorophyll and chlorophyll *a* and *b* concentrations were determined following the equation below, that is [11,55]:

$$\text{Chlorophyll } a \text{ (C}_a\text{, } \mu\text{g/ml)} = 12.21 A_{663} - 2.81 A_{646}$$

$$\text{Chlorophyll } b \text{ (C}_b\text{, } \mu\text{g/ml)} = 20.13 A_{646} - 5.03 A_{663}$$

$$\text{Total chlorophyll (C}_{a+b}\text{, } \mu\text{g/ml)} = C_a + C_b$$

$$\text{Chlorophyll } a/b \text{ ratio} = C_a/C_b$$

Following the procedures in Scholander et al. [56], the predawn (ψ_p) and midday (ψ_m) leaf water potentials (MPa) were determined in healthy, fully expanded and sun-exposed apical leaves using a pressure chamber (Model 1505D EXP, PMS Instrument Company, Albany, Oregon, USA) (c.a., 1.5 m above the ground).

4.4. Statistical analysis

One-way analysis of variance (ANOVA) was employed to determine the effects of irrigation and fertilization treatments on the morpho-physiological traits measured for each species. To assess multiple comparisons among the treatments, Duncan's multiple range test (DMRT) was used. All the statistical analyses were run using the Statistical Analysis Software (SAS) package [57].

5. Conclusions

In this study, the LA, SLA, and LB were higher in 4 L h⁻¹ and/or 8 L h⁻¹ with or without NPK and compost compared with control treatments in all species. However, the total chlorophyll content significantly declined in a higher amount of irrigation with either NPK or compost. Because the survival rate was still high during the course of the experiment, such a decline was seen as a positive response of the species to cope with the changing soil moisture and nutrient conditions. Further, the recovery of leaf water potential of plants grown under 4 L h⁻¹ and/or 8 L h⁻¹ after a significant decline at 13:00 to 15:00 time periods indicated a certain degree of plasticity of the species to fluctuating soil moisture conditions. Therefore, we suggest the 4 L h⁻¹ and/or 8 L h⁻¹ with NPK or compost to be the optimal irrigation and fertilization strategy for *P. sibirica* and *U. pumila* in

reforestation sites in the arid and semi-arid region of Mongolia. The present study should provide us with a better understanding of tree responses to varying amounts of irrigation with or without fertilizer, particularly in pursuit of sustainable forest management in arid and semi-arid ecosystems.

Supplementary Materials: The following data is available online at www.mdpi.com/xxx/s1, Table S1: P-values of One-way ANOVA for treatment effects on growth and morpho-physiological traits of *Populus sibirica* and *Ulmus pumila*.

Author Contributions: Conceptualization, B.N.-O., S.-O.B.; methodology, B.N.-O., S.-O.B.; software and data analysis, S.-O.B.; data collection, S.-O.B., E.T., O.B.; writing—original draft preparation, S.-O.B., J.O.H.; writing—review and editing, B.N.-O., B.B.P., J.O.H., A.M., D.C.; supervision, B.N.-O., B.B.P.; funding acquisition, B.N.-O., B.B.P. All authors have read and agreed to the published version of the manuscript.

Funding: This work was financially supported by the Fellowship Grant (P2019-3635) by National University of Mongolia and R&D Program for Forest Science Technology (Project No. 2021317B10-2122-AA03) provided by the Korea Forest Service (Korea Forestry Promotion Institute).

Data Availability Statement: The data used is primarily reflected in the article. Other relevant data is available from the authors upon request.

Acknowledgments: The authors gratefully thank the staff of the Korea-Mongolia Joint *Green Belt* Plantation Project (Korea Forest Service) and the members of the Laboratory of Forest Genetics and Ecophysiology, the National University of Mongolia for their assistance in the laboratory and field works.

Conflicts of Interest: The authors declare no conflict of interest

References

1. Liu, Z.; Yao, Z.; Huang, H.; Batjav, B.; Wang, R. Evaluation of extreme cold and drought over the Mongolian Plateau. *Water* **2019**, *11*, 74, doi:10.3390/w11010074.
2. Lee, T.Y.; Je, S.M.; Kwak, M.J.; Akhmadi, K.; Tumurbaatar, E.; Khaine, I.; Lee, H.K.; Jang, J.H.; Kim, H.N.; Ahn, H.J.; et al. Physiological responses of *Populus sibirica* to different irrigation regimes for reforestation in arid area. *South African J. Bot.* **2017**, *112*, 329–335, doi:10.1016/j.sajb.2017.06.017.
3. Nyam-Osor, B.; Byambadorj, S.; Park, B.B.; Terzaghi, M.; Gabriella, S.S.; A.Stanturf, J.; Chiatante, D.; Montagnoli, A. Root Biomass Distribution of *Populus sibirica* and *Ulmus pumila* Afforestation Stands Is Affected by Watering Regimes and Fertilization in the Mongolian Semi-arid Steppe. *Front. Plant Sci.* **2021**, *12*, 638828, doi:10.3389/fpls.2021.638828.
4. Byambadorj, S.-O.; Nyam-Osor, B.; Park, B.B.; Avirmed, T.; Scippa, G.S.; Chiatante, D.; Montagnoli, A.; Dimitrova, A. Afforestation of Mongolian steppe: patterns of biomass partitioning in *Populus sibirica* and *Ulmus pumila* trees in response to management supporting measures. *Plant Biosyst. - An Int. J. Deal. with all Asp. Plant Biol.* **2021**, *155*, 1–13, doi:10.1080/11263504.2021.1985002.
5. Cho, S.; Ser-Oddamba, B.; Batkhuu, N.-O.; Seok Kim, H. Comparison of water use efficiency and biomass production in 10-year-old *Populus sibirica* and *Ulmus pumila* plantations in Lun soum, Mongolia. *Forest Sci. Technol.* **2019**, *15*, 147–158, doi:10.1080/21580103.2019.1634646.
6. Fan, B.; Zhang, A.; Yang, Y.; Ma, Q.; Li, X.; Zhao, C. Long-Term Effects of Xerophytic Shrub *Haloxylon ammodendron* Plantations on Soil Properties and Vegetation Dynamics in Northwest China. *J. Plos One* **2016**, *11*, e0168000, doi:10.1371/journal.pone.0168000.
7. Yan, Q.; Zhu, J.; Zheng, X.; Jin, C. Causal effects of shelter forests and water factors on desertification control during 2000–2010 at the Horqin Sandy Land region, China. *J. For. Res.* **2015**, *26*, 33–45, doi:10.1007/s11676-014-0012-x.
8. Miyasaka, T.; Okuro, T.; Miyamori, E.; Zhao, X.; Takeuchi, K. Effects of different restoration measures and sand dune topography on short- and long-term vegetation restoration in northeast China. *J. Arid Environ.* **2014**, *111*, 1–6, doi:10.1016/j.jaridenv.2014.07.003.

9. Tsogtbaatar, J. Deforestation and reforestation needs in Mongolia. *For. Ecol. Manage.* **2004**, *201*, 57–63, doi:10.1016/j.foreco.2004.06.011.
10. Wang, X.M.; Zhang, C.X.; Hasi, E.; Dong, Z.B. Has the Three Norths Forest Shelterbelt Program solved the desertification and dust storm problems in arid and semiarid China? *J. Arid Environ.* **2010**, *74*, 13–22, doi:10.1016/j.jaridenv.2009.08.001.
11. Byambadorj, S.; Park, B.B.; Hernandez, J.O.; Dulamsuren, N.; Sainbuyan, Z.; Altantugs, O.; Sharavdorj, K.; Seong, I.K. Optimal Irrigation Regime for Woody Species Potentially Suitable for Effective and Sustainable Afforestation in the Desert Region of Mongolia. *Land* **2021**, *10*, 212.
12. Wang, N.; Fu, F.; Wang, H.; Wang, P.; He, S.; Shao, H.; Ni, Z.; Zhang, X. Effects of irrigation and nitrogen on chlorophyll content, dry matter and nitrogen accumulation in sugar beet (*Beta vulgaris* L.). *Sci. Rep.* **2021**, *11*, 16651, doi:10.1038/s41598-021-95792-z.
13. Hernandez, J.O.; Quimado, M.O.; Fernando, E.S.; Province, B. Xerophytic characteristics of *Tectona philippinensis* Benth. & Hook.f. *Philipp. J. Sci.* **2016**, *145*, 259–269.
14. Hasibeder, R.; Fuchslueger, L.; Richter, A.; Bahn, M. Summer drought alters carbon allocation to roots and root respiration in mountain grassland. *New Phytol.* **2015**, *205*, 1117–1127, doi:10.1111/nph.13146.
15. Xu, Z.; Zhou, G.; Shimizu, H. Plant responses to drought and rewatering. *Plant Signal. Behav.* **2010**, *5*, 649–654, doi:10.4161/psb.5.6.11398.
16. Yin, C.; Wang, X.; Duan, B.; Luo, J.; Li, C. Early growth, dry matter allocation and water use efficiency of two sympatric *Populus* species as affected by water stress. *Environ. Exp. Bot.* **2005**, *53*, 315–322, doi:10.1016/j.envexpbot.2004.04.007.
17. Guo, X.; Li, S.; Wang, D.; Huang, Z.; Sarwar, N.; Mubeen, K.; Shakeel, M.; Hussain, M. Effects of water and fertilizer coupling on the physiological characteristics and growth of rabbiteye blueberry. *PLoS One* **2021**, *16*, e0254013, doi:10.1371/journal.pone.0254013.
18. Basal, O.; Szabó, A. Physiomorphology of Soybean as Affected by Drought Stress and Nitrogen Application. *Scientifica (Cairo)*. **2020**, 6093836, doi:10.1155/2020/6093836.
19. Guyot, G.; Scoffoni, C.; Sack, L. Combined impacts of irradiance and dehydration on leaf hydraulic conductance: Insights into vulnerability and stomatal control. *Plant, Cell Environ.* **2012**, *35*, 857–871, doi:10.1111/j.1365-3040.2011.02458.x.
20. Maréchaux, I.; Bartlett, M.K.; Sack, L.; Baraloto, C.; Engel, J.; Joetzier, E.; Chave, J. Drought tolerance as predicted by leaf water potential at turgor loss point varies strongly across species within an Amazonian forest. *Funct. Ecol.* **2015**, *29*, 1268–1277, doi:10.1111/1365-2435.12452.
21. Kołodziejek, J.; Michlewska, S. Effect of soil moisture on morpho-anatomical leaf traits of *Ranunculus acris* (Ranunculaceae). *Polish J. Ecol.* **2015**, *63*, 400–413, doi:10.3161/15052249PJE2015.63.3.010.
22. Rad, M.H.; Assare, M.H.; Banakar, M.H.; Soltani, M. Effects of different soil moisture regimes on Leaf Area Index, Specific Leaf Area and Water Use Efficiency in *Eucalyptus camaldulensis* Dehnh) under dry climatic conditions. *Asian J. Plant Sci.* **2011**, *10*, 294–300.
23. Hernandez, J.O.; Quimado, M.O.; Fernando, E.S.; Pulan, D.E.; Malabrigo, P.L.; Maldia, L.S.J. Functional traits of stem and leaf of *Wrightia candollei* S. Vidal. *Philipp. J. Sci.* **2019**, *148*, 307–314.
24. Gómez-del-Campo, M.; Ruiz, C.; Lissarrague, J.R. Effect of water stress on leaf area development, photosynthesis, and productivity in Chardonnay and Airén grapevines. *Am. J. Enol. Vitic.* **2002**, *53*, 138–143.
25. Cramer, M.D.; Hawkins, H.J.; Verboom, G.A. The importance of nutritional regulation of plant water flux. *Oecologia* **2009**, *161*, 15–24, doi:10.1007/s00442-009-1364-3.
26. Wang, D.M.; Yu, Z.W.; Zhang, Y.L.; Xu, Z.Z. Changes in nitrogen accumulation, distribution, translocation and nitrogen use efficiency in different wheat cultivars under different irrigation conditions. *Plant Nutr. Fertil. Sci.* **2010**, *16*, 1041–1048.
27. Chadha, A.; Florentine, S.K.; Chauhan, B.S.; Long, B.; Jayasundera, M. Influence of soil moisture regimes on growth, photosynthetic capacity, leaf biochemistry and reproductive capabilities of the invasive agronomic weed; *Lactuca serriola*.

- PLoS One* **2018**, *14*, e0218191, doi:10.1371/journal.pone.0218191.
28. Jaleel, C.A.; Manivannan, P.; Wahid, A.; Farooq, M.; Al-Juburi, H.J.; Somasundaram, R.; Panneerselvam, R. Drought stress in plants: A review on morphological characteristics and pigments composition. *Int. J. Agric. Biol.* **2009**, *11*, 100–105.
 29. Rathore, V.S.; Nathawat, N.S.; Bhardwaj, S.; Yadav, B.M.; Kumar, M.; Santra, P.; Praveen Kumar; Reager, M.L.; Yadava, N.D.; Yadav, O.P. Optimization of deficit irrigation and nitrogen fertilizer management for peanut production in an arid region. *Sci. Rep.* **2021**, *11*, 5456, doi:10.1038/s41598-021-82968-w.
 30. Piha, M.I. Optimizing fertilizer use and practical rainfall capture in a semi-arid environment with variable rainfall. *Exp. Agric.* **1993**, *29*, 405–415, doi:10.1017/S0014479700021128.
 31. Zhang, C.; Xi, N. Precipitation Changes Regulate Plant and Soil Microbial Biomass Via Plasticity in Plant Biomass Allocation in Grasslands: A Meta-Analysis. *Front. Plant Sci.* **2021**, *12*, doi:10.3389/fpls.2021.614968.
 32. Li, S.X.; Wang, Z.H.; Stewart, B.A. Responses of Crop Plants to Ammonium and Nitrate N. *Adv. Agron.* **2013**, *118*, 205–397, doi:10.1016/B978-0-12-405942-9.00005-0.
 33. Hassanzadeh, M.; Ebadi, A.; Panahyan-e-Kivi, M.; Eshghi, A.G.; Jamaati-e-Somarin, S.; Saeidi, M.; Zabihi-e-Mahmoodabad, R. Evaluation of Drought Stress on Relative Water Content and Chlorophyll Content of Sesame (*Sesamum indicum* L.) Genotypes at Early Flowering Stage. *Res. J. Environ. Sci.* **2009**, *3*, 345–350, doi:10.3923/rjes.2009.345.350.
 34. Li, Y.; He, N.; Hou, J.; Xu, L.; Liu, C.; Zhang, J.; Wang, Q.; Zhang, X.; Wu, X. Factors influencing leaf chlorophyll content in natural forests at the biome scale. *Front. Ecol. Evol.* **2018**, *6*, 64, doi:10.3389/fevo.2018.00064.
 35. Zhou, G.S. Effect of water stress on photochemical activity of chloroplast from wheat. *J. Beijing Agric. Coll.* **2003**, *18*, 188–190, doi:10.3969/j.issn.1002-3186.2003.03.008.
 36. Hailemichael, G.; Catalina, A.; González, M.R.; Martin, P. Relationships between water status, leaf chlorophyll content and photosynthetic performance in Tempranillo vineyards. *South African J. Enol. Vitic.* **2016**, *37*, 149–156, doi:10.21548/37-2-1004.
 37. Gholamin, R.; Khayatnezhad, M. The effect of end season drought stress on the chlorophyll content, chlorophyll fluorescence parameters and yield in maize cultivars. *Sci. Res. Essays* **2011**, *6*, 5351–5357, doi:10.5897/SRE11.914.
 38. Schlemmer, M.R.; Francis, D.D.; Shanahan, J.F.; Schepers, J.S. Remotely measuring chlorophyll content in corn leaves with differing nitrogen levels and relative water content. *Agron. J.* **2005**, *97*, 106–112, doi:10.2134/agronj2005.0106.
 39. Hamblin, J.; Stefanova, K.; Angessa, T.T. Variation in chlorophyll content per unit leaf area in spring wheat and implications for selection in segregating material. *PLoS One* **2014**, *9*, e92529, doi:10.1371/journal.pone.0092529.
 40. Sanchez, R.A.; Hall, A.J.; Trapani, N. Effects of water stress on the chlorophyll content, nitrogen level and photosynthesis of leaves of two maize genotypes. *Water* **1983**, *7*, 35–47.
 41. Brougham, R.W. The Relationship between the Critical Leaf Area, Total Chlorophyll Content, and Maximum Growth-rate of some Pasture and Crop Plants. *Ann. Bot.* **1960**, *24*, 463–474.
 42. Khajeddin, S.J.; Matinkhah, S.H.; Jafari, Z. A drought resistance index to select drought resistant plant species based on leaf water potential measurements. *J. Arid Land* **2019**, *11*, 623–635, doi:10.1007/s40333-019-0024-7.
 43. Schneider, E.; Sanders, Jö.; Willert, D. Von Devil's claw (*Harpagophytum procumbens*) from southern Africa: sustainable use by cultivation combined with controlled harvesting in semi-wild populations. *Frontis* **2006**, *17*, 181–202, doi:10.1007/1-4020-5449-1_13.
 44. Ulziykhutag, N. *Overview of the Flora of Mongolia*; State Publishing: Ulaanbaatar, Mongolia, 1989;
 45. Lavrenko, E.M.; Karamysheva, Z.V.; Nikulina, R.I. *Steppes of Eurasia*; Nauka: Leningrad, Russia, 1991;
 46. IUSS Working Group WRB *World reference base for soil resources 2014, update 2015. International soil classification system for naming soils and creating legends for soil maps*; FAO, Rome, 2015; ISBN 9789251083697.
 47. Batkhishig, O. Soil classification of Mongolia. *J. Mong. Soil Sci.* **2016**, *1*, 18–31.
 48. NAMEM The National Agency for Meteorology and Environmental Monitoring of Mongolia. Weather data Available online: <http://namem.gov.mn/eng/?p=56> (accessed on Oct 2, 2019).

49. Byambadorj, S.O.; Chiatante, D.; Akhmadi, K.; Lunten, J.; Ochirbat, B.; Park, B.B.; Scippa, G.S.; Montagnoli, A.; Nyam-Osor, B. The effect of different watering regimes and fertilizer addition on the growth of tree species used to afforest the semi-arid steppe of Mongolia. *Plant Biosyst. - An Int. J. Deal. with all Asp. Plant Biol.* **2020**, *155*, 747–758, doi:10.1080/11263504.2020.1779845.
50. Johnson, H.; Brandle, J. Shelterbelt design Available online: <http://agriculture.vic.gov.au/agriculture/farm-management/soil-and-water/erosion/shelterbelt-design> (accessed on Sep 15, 2019).
51. Schneider, C.A.; Rasband, W.S.; Eliceiri, K.W. NIH Image to ImageJ: 25 years of image analysis. *Nat. Methods* **2012**, *9*, 671–675, doi:10.1038/nmeth.2089.
52. Hernandez, J.O.; Maldia, L.S.; Pulan, D.E.; Buot, I.E.; Park, B.B. Leaf architecture and petiole anatomy of Philippine Dipterocarpus species (Dipterocarpaceae). *Bangladesh J. Plant Taxon.* **2020**, *27*, 1–14, doi:10.3329/bjpt.v27i1.47564.
53. Li, Y.; Johnson, D.A.; Su, Y.; Cui, J.; Zhang, T. Specific leaf area and leaf dry matter content of plants growing in sand dunes. *Bot. Bull. Acad. Sin.* **2005**, *46*, 127–134.
54. Kousar, M.; Suresh, G.B.; Lavanya, G.R.; Grard, A. Studies of chlorophyll content by different methods in Black Gram. *Int. J. Agric. Res.* **2007**, *2*, 651–654, doi:10.1016/j.coldregions.2012.02.003.
55. Wellburn, A.R. The Spectral Determination of Chlorophylls a and b, as well as Total Carotenoids, Using Various Solvents with Spectrophotometers of Different Resolution. *J. Plant Physiol.* **1994**, *144*, 307–313, doi:10.1016/S0176-1617(11)81192-2.
56. Scholander, P.F.; Hammel, H.T.; Hemmingsen, E. a.; Bradstreet, E.D. Hydrostatic Pressure and Osmotic Potential in Leaves of Mangroves and Some Other Plants. *Proc. Natl. Acad. Sci. U. S. A.* **1964**, *52*, 119–125, doi:10.1073/pnas.52.1.119.
57. SAS Institute Inc SAS software 9.4. *SAS Inst. Inc. Cary, NC, USA* 2014, 1–25.