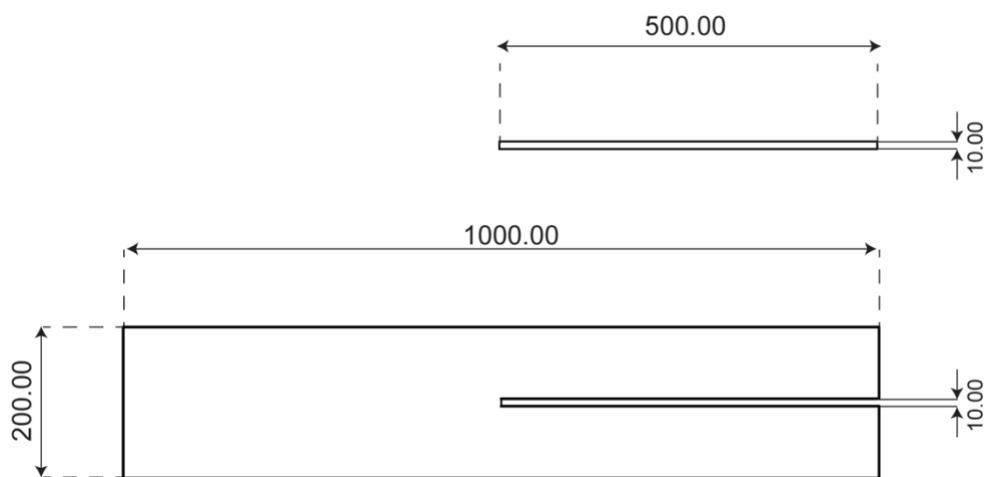
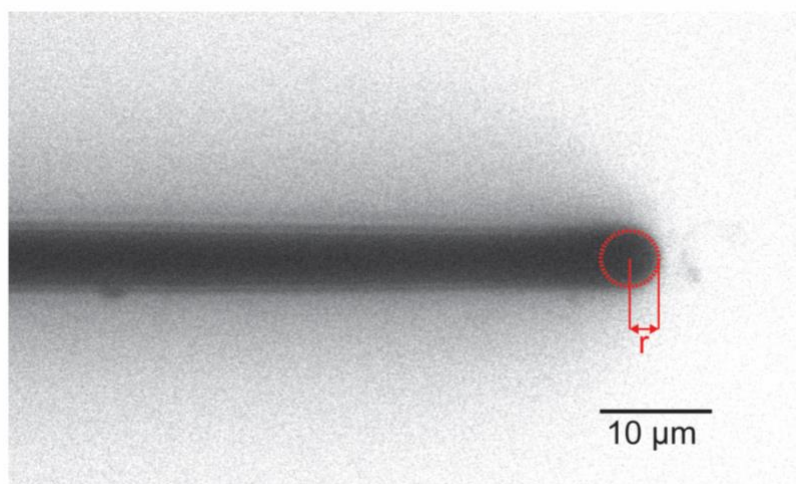


## Supplementary Materials: Fabrication of 3D micro-blades for the cutting of biological structures in a microfluidic guillotine

Saisneha Koppaka, Kevin S. Zhang, Myra Kurosu Jalil, Lucas R. Blauch and Cindy K. Y. Tang



**Figure S1.** Schematic diagrams of the rectangular features for IP-S photoresist adhesion tests. Top view of rectangular features and the inverse of these features for the adhesion test in Table 1 (main text). Both features are 100  $\mu\text{m}$  tall. All dimensions are in units of microns.



**Figure S2.** Radius of curvature of the tip of the 90° blade. Confocal microscope image of the 90° blade in PDMS used for measuring blade tip radius. See section 2.4 in the text for details.

**Table S1.** Table of Bonferroni corrected p-values of Sytox fluorescence data. Significance is denoted with \* indicating  $p \leq 0.05$ , \*\* indicating  $p \leq 0.01$ , and \*\*\* indicating  $p \leq 0.001$ .

	90°	11°	Catenary	Sashimi	Dull to Sharp
90°		0.041*	0.007**	1.000	0.340
11°			1.000	0.797	0.008**
Catenary				0.669	0.0005***
Sashimi					0.038*
Dull to Sharp					