

## Review article

### Exposure to Environmental Factor Arsenic and Emerging Risk of Alzheimer's Disease: Perspective Mechanisms, Management Strategy, And Future Directions

Md. Ataur Rahman<sup>1,2,3,4\*</sup>, Md. Abdul Hannan<sup>4,5</sup>, Md Jamal Uddin<sup>4,6</sup>, Md Saidur Rahman<sup>7</sup>, Md Mamunur Rashid<sup>8</sup>, Bonglee Kim<sup>1,2\*</sup>

<sup>1</sup>Department of Pathology, College of Korean Medicine, Kyung Hee University, Hoegidong Dongdaemungu, Seoul 02447, South Korea.

<sup>2</sup>Korean Medicine-Based Drug Repositioning Cancer Research Center, College of Korean Medicine, Kyung Hee University, Seoul 02447, Korea.

<sup>3</sup>Global Biotechnology & Biomedical Research Network (GBBRN), Department of Biotechnology and Genetic Engineering, Faculty of Biological Sciences, Islamic University, Kushtia 7003, Bangladesh.

<sup>4</sup>ABEx Bio-Research Center, East Azampur, Dhaka-1230, Bangladesh.

<sup>5</sup>Department of Biochemistry and Molecular Biology, Bangladesh Agricultural University, Mymensingh-2202, Bangladesh.

<sup>6</sup>Graduate School of Pharmaceutical Sciences, College of Pharmacy, Ewha Womans University, Seoul, 03760, Korea.

<sup>7</sup>Department of Animal Science & Technology and BET Research Institute, Chung-Ang University, Anseong 17546, Korea.

<sup>8</sup>Department of Clinical Pharmacology and Therapeutics, Seoul National University College of Medicine and Hospital, Seoul 03080, Korea.

\*Correspondence:

Md. Ataur Rahman, E-mail: [ataur1981rahman@hotmail.com](mailto:ataur1981rahman@hotmail.com)

Bonglee Kim, E-mail: [bongleekim@khu.ac.kr](mailto:bongleekim@khu.ac.kr)

## Abstract

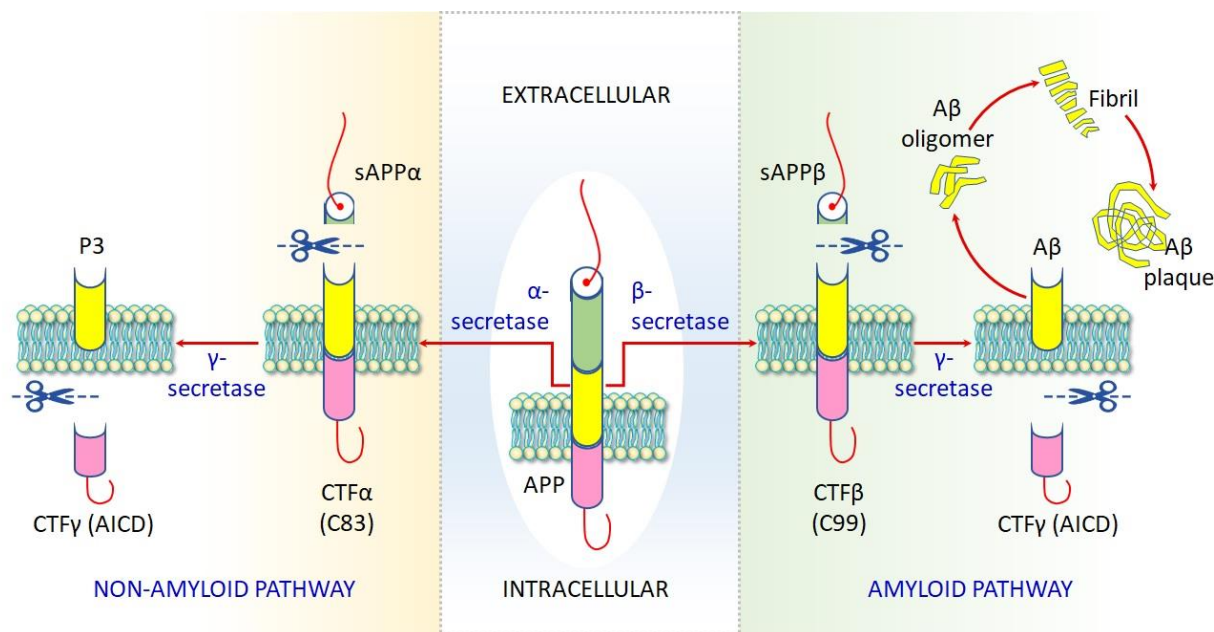
Alzheimer's disease (AD) is one of the most prevailing neurodegenerative diseases, characterized by memory dysfunction and the presence of hyperphosphorylated tau and amyloid  $\beta$  ( $A\beta$ ) aggregate in multiple brain regions, including the hippocampus and cortex. The exact etiology of AD has not yet been confirmed. However, epidemiological reports suggest that populations who were exposed to environmental hazards are more likely to develop AD than those who were not. Arsenic (As) is a naturally occurring environmental risk factor abundant in the Earth's crust and human exposure to As predominantly occurs through drinking water. Convincing evidence suggests that As causes neurotoxicity and impairs memory and cognition although the hypothesis and molecular mechanism of As-associated pathobiology in AD are not clear yet. However, exposure to As and its metabolites leads to various pathogenic events such as oxidative stress, inflammation, mitochondrial dysfunctions, ER stress, apoptosis, impaired protein homeostasis, and abnormal calcium signaling. Evidence has indicated that As exposure induces alterations that coincide with most of the biochemical, pathological, and clinical developments of AD. Here, we overview existing literature to gain insights into the plausible mechanisms that underlie As-induced neurotoxicity and the subsequent neurological deficits in AD. Prospective strategies for the prevention and management of arsenic exposure and neurotoxicity have also been discussed.

**Keywords:** Toxic heavy metal; neurological conditions; mitochondrial dysfunction; proteostasis; environmental chemicals; phytochemicals.

## 1. Introduction

Alzheimer's disease (AD) is the most prevalent neurodegenerative disease and the prime cause of dementia among the elderly. The main pathological features represent the intracellular aggregate comprised of phosphorylated tau protein that forms neurofibrillary tangles (NFTs) as well as extracellular deposition of amyloid- $\beta$  ( $A\beta$ ) leading to the formation of senile plaques (Figure 1) [1-4]. About 70% of AD risk has been considered to be inherited as well as several genes are commonly involved, while the actual causes along with molecular mechanisms have not yet been well understood [4, 5]. It has been found that brains affected via AD are mostly considered through activated microglia, reactive astrocytes, oxidative damage, and altered proteostasis [6]. Recent observations suggest that exposure to several environmental factors may enhance the prospective risk of AD [3] although the authentic etiology of AD is not yet clear. Several investigations have emphasized that environmental risk factors may play a significant role in accelerating or decelerating the progression of AD. Such environmental risk factors include particulate air, pesticides, metal-containing nanoparticles, and numerous heavy metals such as arsenic, aluminum, lead, cadmium, and mercury [3, 7, 8]. Arsenic has been found to be the most toxic metal responsible for the neurotoxicity associated with AD development in the brain, impairing cognitive function [9], although the role of As exposure in AD development has been poorly elucidated.

According to epidemiological investigations, As-exposed population around the world is increasingly recognizing that childhood is the most vulnerable stage during which a low level of As exposure has a detrimental effect on AD development [10]. As exposure has been found to be connected to learning deficiency, variations of neurotransmitter release, and behavioral deficits [11]. Inorganic arsenic (iAs) exposure through drinking water leads to the bioenergetic impairment in AD model of 3xTgAD compared to counterparts suggesting that As exposure exacerbates AD pathophysiological progression [12]. Also, inorganic and organic As exposures increase APP and sAPP $\beta$  expression in cholinergic SN56.B5.G4 cells [11]. Moreover, prolonged arsenic exposure causes an increase in tau phosphorylation and insoluble tau aggregates [13]. These observations suggest that As might have the capacity to enhance  $A\beta$  accumulation and tau phosphorylation to initiate senile plaque formation, leading to increased susceptibility to AD. Therefore, an exhaustive literature review has been conducted to better understand the relationship between As toxicity and AD development along with the pathomechanism in redefining the health risks of As.



**Figure 1:** Mechanism of AD pathogenesis. The amyloid pathway is important to accumulate neurotoxic A $\beta$  plaque via releases of  $\beta$ -secretase which produces extracellular sAPP $\beta$  and C99. Cleavage of C99 fragment by  $\gamma$ -secretase releases A $\beta$  oligomer which subsequently produces A $\beta$  peptide. By the action of  $\alpha$ -secretase, two fragments of sAPP $\alpha$  and C83 produce by non-amyloid pathway. The non-amyloid pathway cleavages APP via  $\alpha$ -secretase to produce two fragments C83, an 83 amino acid intracellular C-terminal fragment, and extracellular sAPP $\alpha$ , soluble amyloid precursor protein  $\alpha$ . Cleavage of C83 fragment by  $\gamma$ -secretase to yield a P3 peptide and CTF $\gamma$ .

## 2. Environmental sources of arsenic exposure

The most abundant inorganic arsenic found in the air, arsenic trioxide (As<sub>2</sub>O<sub>3</sub>), however, it may also be found in water, soil or food with the most prevalent inorganic arsenic (AsO<sub>3</sub>) or arsenites (AsO<sub>2</sub>) [14]. Gallium arsenide (GaAs) is an inorganic arsenic compound with a serious human health effect because of its widespread use in microelectronics [15]. Arsenic and other metals generally come as the major source, with seafood, grains, mushrooms, and poultry as the predominant dietary type. Although seafood contains more arsenic than other meals, it is mainly called arsenobetaine in an organic form, far less dangerous than other types. The most common causes of arsenic poisoning include occupational exposure, contaminated wine or moonshine or malicious delivery [16]. Recently, traditional Chinese herbal arsenic-enhanced remedies have been found to represent a considerable risk to health [17]. In cosmetic color, pigments used to make eye shadows, toxic substances like arsenic are often discovered. Eyelashes' skin is particularly sensitive, and eczema can be caused by applying eye-shadows [18]. Arsenic particles that are water

soluble can be absorbed by wet skin. When arsenic enters the circulatory system at high amounts through percutaneous absorption, there is a risk of carcinogenesis [19]. It was advised that the cosmetic products comprise fewer than 5 ppm of metal contaminants based on recognized toxicity research. Arsenic, which is common in water, soil, and food, can enter the human body fast when swallowed. The majority of the dust parts are placed on the lining when the air containing arsenic dust is inhaled [20]. The material that goes through the skin into the body is very small internal exposure to arsenic and therefore there is little likelihood that it will lead to the poisoning of arsenic [21]. A simple diffusion mechanism enables the majority of arsenic to enter a body in the trivalent inorganic form As(III) [22]. Only a limited amount of pentavalent inorganic arsenic can move through cell membranes via an energy-dependent transport process prior to being converted into trivalent arsenic. As arsenic is excreted through urine both organic and inorganic, most inorganic arsenic could be removed by a few days, although some will linger longer or longer for months. Organic arsenic is normally removed faster than inorganic arsenic within a few days [23]. Arsenic and other metals in soil have a seriously detrimental effect on people's health in various places of the world. In Bangladesh and West Bengal, India, some of the worst occurrences of arsenic poisoning were observed where close to 43 million people drank arsenic-laden water [24]. WHO suggested arsenic limit for water in order to put things in perspective is 0.01 ppm, although a level up to 0.05–3.20 ppm has been found [25].

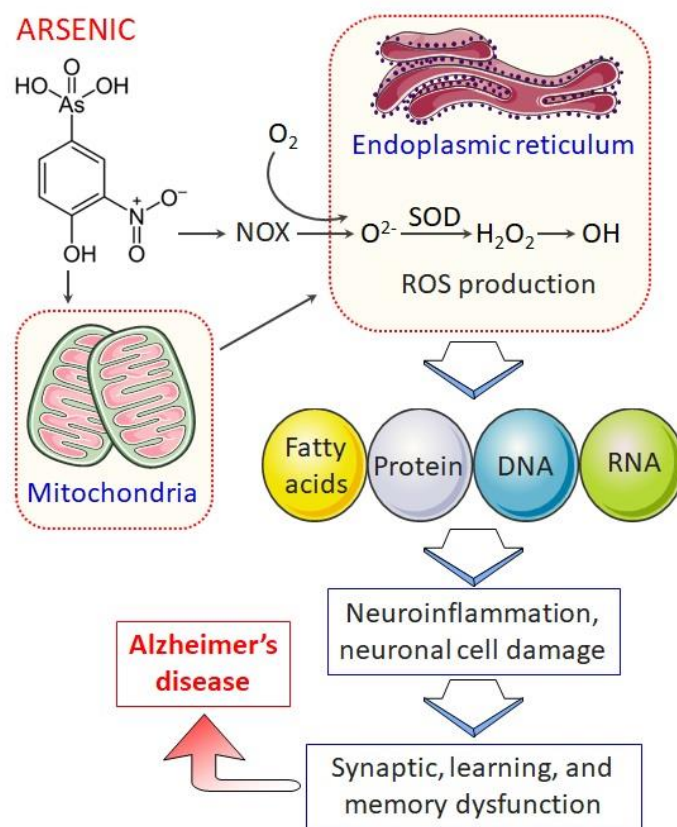
### **3. Prevalence of arsenic exposure and potential risk of AD development**

While inorganic arsenic (As) is a well-known neurotoxic metalloid with adverse neurological and cognitive impacts, the consequences on the elderly have received less attention. Only a few investigations have looked at As exposure as a risk factor for developing Alzheimer's disease [10]. According to a study conducted on rural and elderly people in Texas (Project Frontier), a poor cognitive ability and memory (after being adapted to confounders such as ApoEε4) revealed early indicators of Alzheimer's disease, which are associated with long-term exposure to low arsenic levels (3–15 g/L As in water) [26]. Occupational arsenic exposure was associated with memory loss and cognition function in humans [27]. In Thailand, India, Bangladesh, Mexico, Taiwan, and mainland China, chronic arsenic exposure in the air or drinking water has consistently been found to be related to memory reduction as well as intellectual capabilities in adolescents or children [9]. It has been examined that there was a potential connection between arsenic exposure in drinking

water and cognitive dysfunction among adults living in a rural area of Cochran County, Texas [28]. Furthermore, arsenic exposure in childhood might be linked between lower education levels and AD. Therefore, arsenic exposure appears to be a more potent effect on cognitive function in AD throughout the lifetime consistent with the lifelong-exposure hypothesis for AD.

#### **4. Molecular basis of arsenic toxicity and its implication in AD pathobiology**

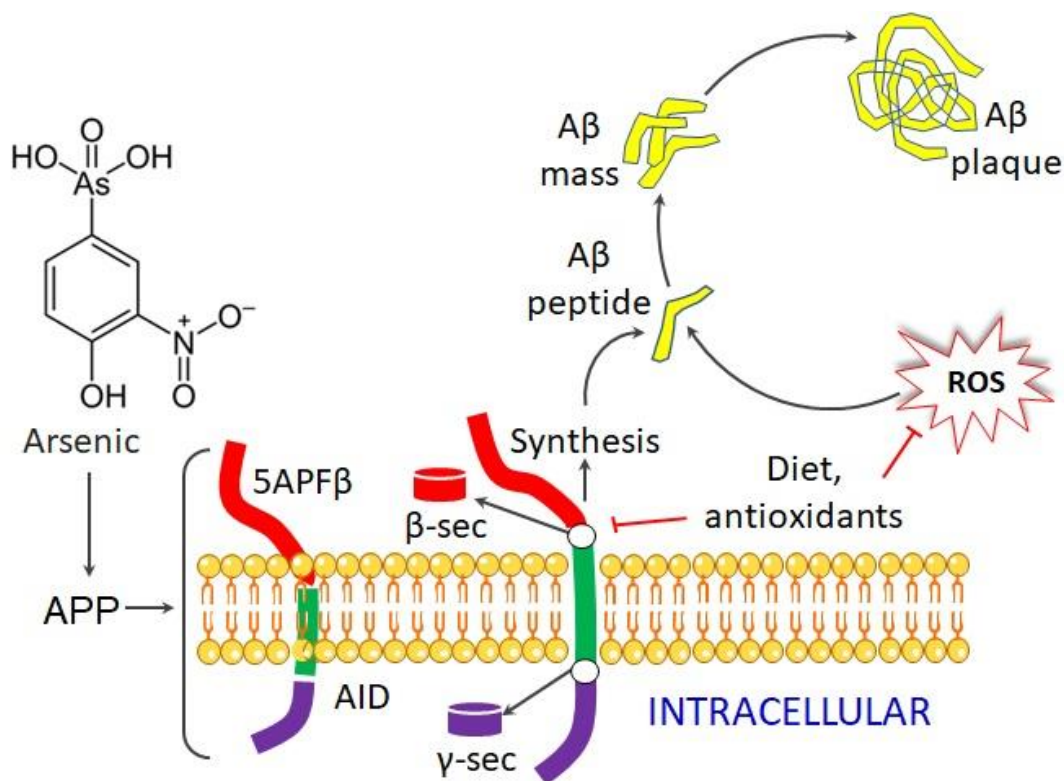
Toxic mechanisms associated with As exposure are very complex which did not yet fully understand. Exposure to As and its metabolites results in the generation of reactive free radicals which oxidize cellular components such as lipids, proteins, and DNA, ultimately causing oxidative stress and subsequent damage to cells (Figure 2) [29]. Arsenic-induced oxidation of DNA leads to a reduction in the antioxidant capability of rodents' brains and protein thiols in hippocampus, striatum, and cortex resulting in downregulating ATP-synthase and encourages peroxidation of lipid in rat brains [30]. In drinking water of 0.005 to 0.02 ppm as well as 0.01 to 0.05 ppm of environmental arsenic exposure in humans and mice respectively, enhances oxidation of DNA and proteins, and oxidative damage with inflammatory responses [31]. All these evidences have suggested that arsenic is a possible etiologic factor for oxidative stress hypothesis in AD pathogenesis which could be anticipated based on a huge literature viewing that oxidized metabolites of RNA, DNA, fatty acids, and proteins are raised in AD brains [9, 32, 33].



**Figure 2:** Arsenic-induced mitochondrial dysfunction and ROS generation in AD. As induces ROS production by mitochondrial dysfunction. NADPH oxidase (NOX) contributes to generate superoxide anion which leads to the release of ROS in cells. ROS generation impairs fatty acids, proteins, and DNA, inducing neuroinflammation and subsequently causing cognitive dysfunction in AD.

Arsenic exposure has been found to reduce memory as well as learning ability in animal models where offspring of mice treated with 0.75 mg/kg of arsenic during pregnancy displayed neurobehavioral retardation in fetal origin [34]. Inorganic As (20 mg/L) induced severe spatial memory losses in mice during pregnancy and early postnatal life [9]. The modification of the amyloid pathway is a plausible explanation of cognitive and memory problems due to As exposure [3, 7]. It has been reported that incubation of cholinergic SN56.B5.G4 cells with organic dimethylarsinic acid (DMA) (5-10  $\mu$ M/12-24 h) increased A $\beta$  levels [11]. However, Tg2576 mouse neurons have been shown to have similar effects (a murine model that overexpresses a mutant form of APP most used in AD) [35]. The effects of the DMA are presumed to be attributable to higher A $\beta$  anabolism (greater APP explication), although the A $\beta$  degradation process has not changed. The method by which As produces an excess A $\beta$  is not known, but the

inflammatory response in the brain and the oxidative stress are associated which is compatible with the hypothesis of Alzheimer's pathobiology (Figure 3) [36, 37].



**Figure 3:** Arsenic induces Aβ accumulation during AD pathogenesis. APP cleaves through the enzymatic action of β- and γ-secretase which subsequently produces Aβ plaque. Dietary antioxidants may hinder the formation of Aβ plaque and ROS, and thereby may prevent AD progression.

#### 4.1 Mechanism of Arsenic-induced neurotoxicity

Human exposure to As is related to extensive neurological problems, including poor concentration, impaired memory, Guillain-Barre like neuropathy, encephalopathy, verbal comprehension, Parkinson's disease, and peripheral neuropathy [38]. The exact mechanisms that underlie arsenic neurotoxicity are largely unrevealed. However, experimental evidence suggests that pathological factors including oxidative stress, inflammation, mitochondrial dysfunctions, ER stress, apoptosis, and impaired protein homeostasis are supposed to be implicated in AD pathobiology [39].



#### **4.1.1 Oxidative stress**

Oxidative stress plays a critical role in the pathobiology of various neurological disorders, including AD [40]. Oxidative stress is accompanied by an increase in reactive oxygen species (ROS) and lipid peroxidation, and reduced levels of superoxide dismutase and glutathione (GSH) levels [41] and constitute the most important mechanism hypothesized for arsenic-mediated neurotoxicity. Wu and colleagues also proposed that intracellular ROS production appears to be the key mechanism of arsenic-induced neurotoxicity [29]. Arsenic-methyltransferase, possibly a protein-binding substrate in the brain, is involved in the processing of inorganic arsenic (iAs) in the presence of GSH, monomethylarsonic acid (MMA) and DMA [42]. Depletion of GSH, therefore, hampers the metabolic processing of IAs. Furthermore, oxidative damage has been associated with the rise in BACE1 activity and consequently with A $\beta$  levels in animal brains exposed to iAs over time [3]. Oxidative stress thus seems to play an essential role in arsenic-mediated neurotoxicity.

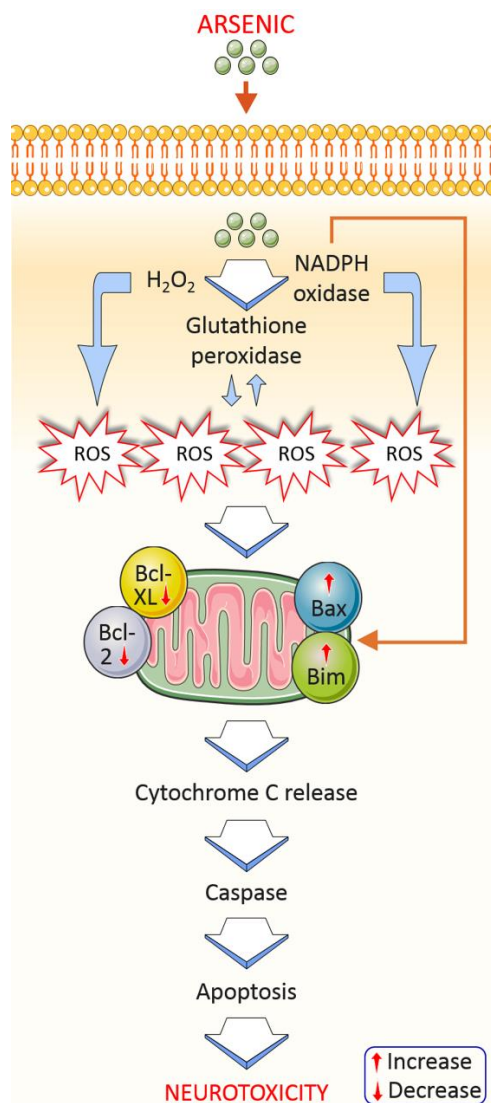
#### **4.1.2 Neuroinflammation**

Neuroinflammation is another crucial event that largely contributes to AD pathobiology [43]. Evidence suggests that arsenic plays a vital role in neuroinflammation via activation of microglia through secretion of pro-inflammatory cytokines which could damage cognitive function, intellectual ability, learning and memory functions [13, 44]. Arsenic administration augmented ROS-mediated expression of pro-inflammatory cytokines in rats via activation of MAP kinase and protein kinase C through increased mRNA levels of pro-inflammatory markers such as TNF $\alpha$ , IL-1 $\beta$ , and IFN $\gamma$  with protein expression of TNF $\alpha$  and IFN $\gamma$  [45]. Intake of excess arsenic implicated MBP-activated autoimmunity and neuroinflammation in athymic nude mice depleted T cell populations in peripheral lymphoid organs [46].

#### **4.1.3 Mitochondrial dysfunction**

Mitochondria occupies a central position in cellular bioenergetics. Mitochondrial dysfunction and oxidative stress are closely linked and together with inflammation constitute a pathological triad [47]. Understanding molecular mechanisms that underlie mitochondrial dysfunction might be useful to progress therapeutic approaches to be effective against arsenic-mediated neurotoxicity. Several reports have described impairment of brain mitochondria during arsenic-mediated toxicity

[48, 49]. Mitochondrial ROS accumulation has been found after arsenic treatment in rat brains [49]. It has been indicated that A $\beta$  lowered the activity of mitochondrial complex I in As-induced 3xTgAD mouse. This study indicates that amyloid aggregates can hinder mitochondrial function. In this hypothesis, reductions in ATP generation are responsible for the endoplasmic reticulum (ER) stress leading to the accumulation of the malfunctioning proteins in its lumen [50]. Arsenic has shown its mutagenic response via disruption to mitochondrial function. As-induced perturbation to mitochondrial oxidation caused production of excess superoxide anions which when react with nitric oxide generate highly reactive peroxynitrites [44]. Arsenic toxicity affects mitochondrial membrane potential via generating ROS and DNA fragmentation, and ROS overproduction is associated with apoptosis induction by the release of cytochrome c which activates caspase pathway (Figure 4) [51]. Thus, mitochondria are the major target in arsenic-mediated neurotoxicity and the subsequent neurological deficits in AD.



**Figure 4:** Arsenic exposure induces apoptotic factors from mitochondria to cause neurotoxicity. Mitochondria are the main target in arsenic-mediated neurotoxicity. Arsenic-mediated oxidative stress by hydrogen peroxide and NADPH oxidase generates ROS production which can disrupt membrane potential resulting in cytochrome c release. Mitochondrial apoptotic markers for example Bax/Bim and Bcl-XL/Bcl-2, and numerous inflammatory markers (NF- $\kappa$ ) alters and activates caspase activation which causes cell damage and cell death via apoptosis pathway.

#### 4.1.4 Endoplasmic reticulum (ER) stress

Current evidence suggests a relationship between ER stress and arsenic-induced neurodegenerative diseases [3, 52]. Arsenic has been found to induce endoplasmic reticulum (ER) stress via accumulation of misfolded proteins which results in neurotoxicity and cell death [53], although the underlying molecular mechanisms are not well understood. Recently, it has been

described that arsenic-mediated ER stress and neurotoxicity are associated with early neurodevelopment which can be alleviated by microRNA-124 [52]. Additionally, in MIN6 cells, arsenic impaired mitochondrial function through diminishing mitochondrial membrane potential and decreased cytochrome c release which cause mitochondrial ROS generation [54].

#### **4.1.5 Apoptosis**

Arsenic toxicity involves apoptosis as a common phenomenon of cell death. Arsenic-induced neurotoxicity has been involved in apoptosis induction in the cerebral neurons via activation of JNK3 and p38 mitogen-activated protein kinase (p38MAPK) pathways [55]. Recently it has been found that arsenic prompts neuronal apoptosis through upregulating Bax levels as well as decreasing Bcl-2 protein [56]. Additionally, arsenic-induced keratinocyte apoptosis in extrinsic apoptotic pathway has involved in Fas/FasL-mediated which is correlated with modifications of AP-1 and NF- $\kappa$ B pathway [57]. Arsenic-induced neuronal cell death involved activation of autophagy-dependent apoptosis through inactivation of Akt pathway and activation of AMPK pathway [58].

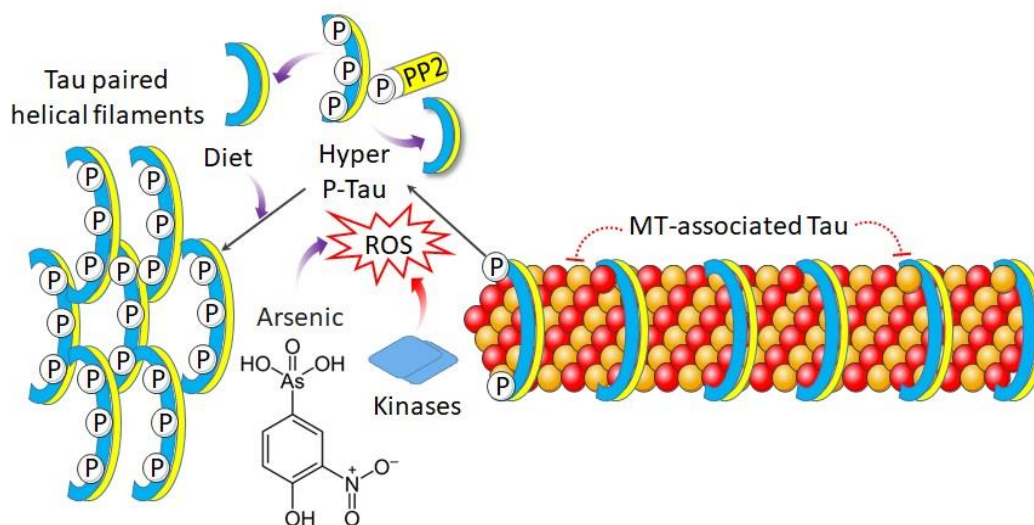
#### **4.1.6 Impaired proteostasis**

Protein quality control systems, also known as protein homeostasis or simply proteostasis, play a significant role in cellular physiological functions. Impairment in proteostasis leads to aberrant deposition of protein aggregates which are characteristics of many neurodegenerative disorders like A $\beta$  aggregate in AD [59, 60]. Compelling evidence from recent studies suggests that chronic exposure to inorganic arsenic can disrupt protein quality control and clearance systems which contribute to the pathobiology of proteinopathic brain disorders such as AD. Arsenic-mediated post-translational modifications of proteins and disruptions of ubiquitination may culminate into impairment in proteostasis [61]. Genome-wide imaging screen analysis uncovers the molecular causes of arsenite-mediated protein aggregation and toxicity studied on *Saccharomyces cerevisiae* deletion mutants [62]. Recently, it has been found that three ER stress sensors viz. ATF6 $\alpha$ , IRE1 $\alpha$ , and PERK have an important role in ER stress-related autophagy, mitochondrial dysfunction, and unfolded protein response (UPR) in arsenic-induced malignancies to identify vital targets for therapeutics of neurodegenerative and cancer prevention [63]. Furthermore, arsenic prevents

SNARE complex formation via increasing SNAP29 O-GlcNAcylation which perturb proteostasis and transfection of O-GlcNAcylation-defective CRISPR-mediated SNAP29 knockout cells eliminates arsenic-induced autophagy inhibition [64]. Additionally, arsenic has been found to induce autophagy inhibition and ER stress induction which suggestively low arsenic-mediated recover of oxidative stress, and restoring proteostasis by the autophagy pathway [65]. Particularly, arsenic-mediated UPR activation has related with accumulation of p62 and LC3 protein aggregates in the sequestration of autophagic protein clearance [66], and activation of UPR as well as formation of aggregated protein might be targeted to the lysosomal degradation of proteostasis.

#### 4.1.7 Impaired calcium signaling

Arsenic-induced mitochondrial dysfunction causes a decline in ATP generation which is responsible for ER stress leading to calcium build-up in intracellular compartments and impairment in calcium signaling, most likely due to a lack of recovery systems [50]. Altered calcium signaling can cause cognitive impairment or the development of tau hyperphosphorylation by activating protein kinases like GSK-3. Hyperphosphorylated tau and amyloid aggregates interact with mitochondria, generating complex I shortages and leading to an establishment of a vicious cycle of energy deprivation and proteostasis (Figure 5) [67].



**Figure 5:** Arsenic influences tau hyperphosphorylation in AD. Hyperphosphorylated tau aggregates and acts on mitochondria, triggering energy deficit.

## 5. Management and control of arsenic-induced neurological deficits

Although the epidemiological reports and experimental evidence clearly demonstrate that exposure to arsenic results in abnormalities in the developing brain and cognitive deficits in adults, the specific management strategy that can effectively address arsenic-induced neurological deficits is yet to be developed. However, the approaches such as administration of biological trace elements (zinc and selenium), antioxidants and arsenic chelators, high protein diets, and exposure to an enriched environment could be the possible strategies that can ameliorate arsenic-induced systemic deficits.

The forefront strategy that has been shown to be effective in alleviating arsenic-induced toxic effects is the dietary inclusion of trace elements such as zinc and selenium. Zinc can prevent arsenic-induced neurotoxicity in fish models by preserving the blood-brain barrier and attenuating apoptosis and autophagy dysfunction [68]. In several other studies with common carp, zinc supplementation also has been shown to be effective in protecting against arsenic-induced toxicity in heart [69], kidney [70, 71], liver [72], spleen [73] and pancreas [74]. In a rat model of chronic arsenic toxicity, zinc supplementation can protect against damages to liver and kidney [75]. In neuronal cell line, zinc was shown to alleviate arsenic-induced apoptosis [76]. The early-stage zinc supplementation to pregnant women can prevent preterm birth induced by arsenic toxicity as observed in a rural Bangladesh birth cohort [77]. Another vital trace element with antioxidant potential is selenium that has been reported to be protective against arsenic toxicity. Selenium co-administration can protect against arsenic-induced behavioral deficits in rats through a mechanism involving anti-inflammation, antioxidation and anti-apoptosis [78]. In another study by Samad and colleagues, selenium supplementation through drinking water can ameliorate arsenic-induced anxiety/depression and memory deficits in rats [79]. In chickens exposed to arsenic at a subacute dose, selenium (up to 10 mg/kg) can prevent oxidative damage, neurotransmitter disorders, and apoptosis in the brain [80]. Also, selenium was reported to be effective in ameliorating arsenic-induced damage to other tissues including liver [81], reproductive [82] and other organs [83].

In addition to biological trace elements, food-derived bioactive compounds that can attenuate oxidative stress and inflammation have protective potential against arsenic-induced tissue damage [84]. The most notable of the natural compounds are curcumin, quercetin, gallic acid, genistein, resveratrol, and thymoquinone whose protective effects against arsenic toxicity have been

supported by multiple studies in animals [85, 86]. However, the extrapolation of the beneficial effects of these compounds from preclinical evidence to clinical patients requires further validation. However, a limited number of studies of phytochemical effects on arsenic-induced toxicity in brain disorders have been reported. Green tea and vitamin C attenuated arsenic-induced lipid peroxidation in rat brain [87]. In addition, the leaf extracts of *Annona muricata* reduced arsenic-mediated neurotoxicity [88, 89]. Besides, the treatment of arsenic intoxication is carried out mainly by chelation therapy using dimercaprol and aqueous garlic extract in A375 cells [90]. The garlic extract has a potential antidote to the toxic effects of sodium arsenite in mice [91]. Allicin, a bioactive compound of garlic decreases arsenic-induced oxidative stress and toxicity in mice [92]. The aqueous extracts of garlic and its derivative, allicin take part in chelation of arsenic [93]. Also, combined effect of various plant extracts has been recorded against arsenic-induced hematological, renal, and hepatic alteration in experimental animals [94-96]. A nanocapsulated quercetin prevented arsenic-induced damage in various organs, including brain of rats and mice [97, 98].

Access to a high protein diet also can help mitigate arsenic toxicity. Even, evidence suggests that ensuring an enriched environment can be a prospective strategy against arsenic-induced neurological problems, probably by alleviating depression and stress [9]. Moreover, the conventional therapy that uses various chelating agents such as dimercaprol (BAL, British antilewisite), dimercaptosuccinic acid (DMSA), and penicillamine still may benefit arsenic-induced neurological deficits [99]. Beyond the management strategies outlined above, preventive measures such as access to arsenic-free drinking water, avoiding occupational exposure to arsenic, avoiding risk factors to neurological disorders, and provision of nutritious foods need to be considered for the ultimate prevention of As-induced health consequences, including neurological deficits [100].

## 6. Conclusion and future directions

Health consequences of As exposure represent one of the devastating setbacks of environmental pollution in human history. As reported in various epidemiological and experimental studies, arsenic extends its toxic effects to a number of vital organs, including the brain, where it causes neurodevelopmental abnormalities in childhood and cognitive deficits in adults. Although the underlying precise mechanisms of As-induced neurotoxicity have not yet been determined, the

information from this review shows that the changes caused by arsenic exposure coincide with the pathological progression, clinical symptoms, and biochemical features of AD. While acute As toxicity can be managed by clinical use of specific antidotes, existing strategies to manage chronic As exposure are limited to supportive only. Extensive research involving animal models and appropriate human subjects is crucial to explore the detailed molecular mechanisms in order to design an effective therapeutic strategy against this menace.



**Author Contributions:** M.A.R.: conceptualization, data curation, writing-original draft preparation, writing-review and editing. M.A.H.: original draft preparation, writing-review and editing. M.J.U.: visualization, writing-original draft preparation, M.S.R.: data curation and prepared the figures, M.M.R.: writing-original draft preparation. B.K.: supervision, review & editing, funding. All authors have read and agreed to the published version of the manuscript.

**Institutional Review Board Statement:** Not applicable.

**Informed Consent Statement:** Not applicable.

**Data Availability Statement:** Not applicable.

**Funding:** This research was supported by Basic Science Research Program through the National Research Foundation of Korea (NRF) funded by the Ministry of Education (NRF-2020R1I1A2066868), the National Research Foundation of Korea (NRF) grant funded by the Korea government (MSIT) (No. 2020R1A5A2019413). M.J.U. is supported by National Research Foundation (No. 2020R1I1A1A01072879) and the Brain Pool program funded by the Ministry of Science and ICT through the National Research Foundation (No. 2020H1D3A2A02110924), Republic of Korea.

**Conflicts of Interest:** The authors declare no conflict of interest.

## References

1. Rahman, M.A. and H. Rhim, *Therapeutic implication of autophagy in neurodegenerative diseases*. BMB Rep, 2017. **50**(7): p. 345-354.
2. Moya-Alvarado, G., et al., *Neurodegeneration and Alzheimer's disease (AD). What Can Proteomics Tell Us About the Alzheimer's Brain?* Molecular & Cellular Proteomics, 2016. **15**(2): p. 409-425.
3. Rahman, M.A., et al., *Emerging risk of environmental factors: insight mechanisms of Alzheimer's diseases*. Environmental Science and Pollution Research, 2020. **27**(36): p. 44659-44672.
4. Rahman, M.A., et al., *Modulatory Effects of Autophagy on APP Processing as a Potential Treatment Target for Alzheimer's Disease*. Biomedicines, 2021. **9**(1).
5. Ghai, R., et al., *Current Strategies and Novel Drug Approaches for Alzheimer Disease*. Cns & Neurological Disorders-Drug Targets, 2020. **19**(9): p. 676-690.
6. Clayton, K.A., A.A. Van Enoo, and T. Ikezu, *Alzheimer's Disease: The Role of Microglia in Brain Homeostasis and Proteopathy*. Frontiers in Neuroscience, 2017. **11**.
7. Chin-Chan, M., J. Navarro-Yepes, and B. Quintanilla-Vega, *Environmental pollutants as risk factors for neurodegenerative disorders: Alzheimer and Parkinson diseases*. Frontiers in Cellular Neuroscience, 2015. **9**.
8. Liu, J.X., et al., *The treatment of asthma using the Chinese Materia Medica*. Journal of Ethnopharmacology, 2021. **269**.
9. Tyler, C.R. and A.M. Allan, *The Effects of Arsenic Exposure on Neurological and Cognitive Dysfunction in Human and Rodent Studies: A Review*. Curr Environ Health Rep, 2014. **1**: p. 132-147.
10. Ramos-Chavez, L.A., et al., *Neurological effects of inorganic arsenic exposure: altered cysteine/glutamate transport, NMDA expression and spatial memory impairment*. Front Cell Neurosci, 2015. **9**: p. 21.
11. Zarazua, S., et al., *Arsenic affects expression and processing of amyloid precursor protein (APP) in primary neuronal cells overexpressing the Swedish mutation of human APP*. Int J Dev Neurosci, 2011. **29**(4): p. 389-96.
12. Nino, S.A., et al., *Arsenic Exposure Contributes to the Bioenergetic Damage in an Alzheimer's Disease Model*. ACS Chem Neurosci, 2019. **10**(1): p. 323-336.
13. Wisessaowapak, C., et al., *Prolonged arsenic exposure increases tau phosphorylation in differentiated SH-SY5Y cells: The contribution of GSK3 and ERK1/2*. Environ Toxicol Pharmacol, 2021. **84**: p. 103626.
14. Chung, J.Y., S.D. Yu, and Y.S. Hong, *Environmental source of arsenic exposure*. J Prev Med Public Health, 2014. **47**(5): p. 253-7.
15. Humans, I.W.G.o.t.E.o.C.R.t., *Cobalt in hard metals and cobalt sulfate, gallium arsenide, indium phosphide and vanadium pentoxide*. IARC Monogr Eval Carcinog Risks Hum, 2006. **86**: p. 1-294.
16. Emadi, A. and S.D. Gore, *Arsenic trioxide - An old drug rediscovered*. Blood Reviews, 2010. **24**(4-5): p. 191-199.
17. Luo, L., et al., *Heavy Metal Contaminations in Herbal Medicines: Determination, Comprehensive Risk Assessments, and Solutions*. Frontiers in Pharmacology, 2021. **11**.
18. Borowska, S. and M.M. Brzoska, *Metals in cosmetics: implications for human health*. Journal of Applied Toxicology, 2015. **35**(6): p. 551-572.
19. Briffa, J., E. Sinagra, and R. Blundell, *Heavy metal pollution in the environment and their toxicological effects on humans*. Heliyon, 2020. **6**(9).
20. Wu, X.Y., et al., *A review of toxicity and mechanisms of individual and mixtures of heavy metals in the environment*. Environmental Science and Pollution Research, 2016. **23**(9): p. 8244-8259.

21. Liang, J. and J.J. Schoenau, *Development of Resin Membranes as a Sensitive Indicator of Heavy-Metal Toxicity in the Soil Environment*. International Journal of Environmental Analytical Chemistry, 1995. **59**(2-4): p. 265-275.
22. Liu, Q.Q., E.M. Leslie, and X.C. Le, *Accumulation and Transport of Roxarsone, Arsenobetaine, and Inorganic Arsenic Using the Human Immortalized Caco-2 Cell Line*. Journal of Agricultural and Food Chemistry, 2016. **64**(46): p. 8902-8908.
23. Middleton, D.R.S., et al., *Urinary arsenic profiles reveal exposures to inorganic arsenic from private drinking water supplies in Cornwall, UK*. Scientific Reports, 2016. **6**.
24. Ahmad, S.A., M.H. Khan, and M. Haque, *Arsenic contamination in groundwater in Bangladesh: implications and challenges for healthcare policy*. Risk Management and Healthcare Policy, 2018. **11**: p. 251-261.
25. Mukherjee, A., et al., *Arsenic contamination in groundwater: A global perspective with emphasis on the Asian scenario*. Journal of Health Population and Nutrition, 2006. **24**(2): p. 142-163.
26. Bakulski, K.M., et al., *Heavy Metals Exposure and Alzheimer's Disease and Related Dementias*. J Alzheimers Dis, 2020. **76**(4): p. 1215-1242.
27. Sharma, A. and S. Kumar, *Arsenic exposure with reference to neurological impairment: an overview*. Rev Environ Health, 2019. **34**(4): p. 403-414.
28. O'Bryant, S.E., et al., *Long-Term Low-Level Arsenic Exposure Is Associated with Poorer Neuropsychological Functioning: A Project FRONTIER Study*. International Journal of Environmental Research and Public Health, 2011. **8**(3): p. 861-874.
29. Wu, Z., et al., *Retraction: Naturally occurring sesquiterpene lactone-santonin, exerts anticancer effects in multi-drug resistant breast cancer cells by inducing mitochondrial mediated apoptosis, caspase activation, cell cycle arrest, and by targeting Ras/Raf/MEK/ERK Signaling pathway (Medical Science Monitor (2019) 25 (3676–3682) DOI: 10.12659/MSM.915246)*. Medical Science Monitor, 2020. **27**.
30. Alboghobeish, S., et al., *High fat diet deteriorates the memory impairment induced by arsenic in mice: a sub chronic in vivo study*. Metabolic Brain Disease, 2019. **34**(6): p. 1595-1606.
31. Harper, K.N., et al., *A Dose-Response Study of Arsenic Exposure and Markers of Oxidative Damage in Bangladesh*. Journal of Occupational and Environmental Medicine, 2014. **56**(6): p. 652-658.
32. Padurariu, M., et al., *The Oxidative Stress Hypothesis in Alzheimer's Disease*. Psychiatria Danubina, 2013. **25**(4): p. 401-409.
33. Pratico, D., *Oxidative stress hypothesis in Alzheimer's disease: a reappraisal*. Trends in Pharmacological Sciences, 2008. **29**(12): p. 609-615.
34. Ma, L., C. Zhang, and W.J. Liu, *[Effects of arsenic on the offspring development in mice]*. Zhonghua Yu Fang Yi Xue Za Zhi, 1994. **28**(1): p. 20-3.
35. Sasaguri, H., et al., *APP mouse models for Alzheimer's disease preclinical studies*. EMBO J, 2017. **36**(17): p. 2473-2487.
36. Cheignon, C., et al., *Oxidative stress and the amyloid beta peptide in Alzheimer's disease*. Redox Biol, 2018. **14**: p. 450-464.
37. Butterfield, D.A. and D. Boyd-Kimball, *Oxidative Stress, Amyloid-beta Peptide, and Altered Key Molecular Pathways in the Pathogenesis and Progression of Alzheimer's Disease*. J Alzheimers Dis, 2018. **62**(3): p. 1345-1367.
38. Singh, A.P., R.K. Goel, and T. Kaur, *Mechanisms pertaining to arsenic toxicity*. Toxicol Int, 2011. **18**(2): p. 87-93.
39. Chandravanshi, L.P., R. Gupta, and R.K. Shukla, *Developmental Neurotoxicity of Arsenic: Involvement of Oxidative Stress and Mitochondrial Functions*. Biological Trace Element Research, 2018. **186**(1): p. 185-198.

40. Hannan, M.A., et al., *Neuroprotection Against Oxidative Stress: Phytochemicals Targeting TrkB Signaling and the Nrf2-ARE Antioxidant System*. *Frontiers in Molecular Neuroscience*, 2020. **13**.
41. Dwivedi, N. and S.J. Flora, *Concomitant exposure to arsenic and organophosphates on tissue oxidative stress in rats*. *Food Chem Toxicol*, 2011. **49**(5): p. 1152-9.
42. Roy, N.K., A. Murphy, and M. Costa, *Arsenic Methyltransferase and Methylation of Inorganic Arsenic*. *Biomolecules*, 2020. **10**(9).
43. Dash, R., et al., *Phytosterols: Targeting neuroinflammation in neurodegeneration*. *Current Pharmaceutical Design*, 2021. **27**(3): p. 383-401.
44. Medda, N., et al., *Neurotoxic Mechanism of Arsenic: Synergistic Effect of Mitochondrial Instability, Oxidative Stress, and Hormonal-Neurotransmitter Impairment*. *Biol Trace Elem Res*, 2020. **198**(1): p. 8-15.
45. Firdaus, F., et al., *Ellagic acid attenuates arsenic induced neuro-inflammation and mitochondrial dysfunction associated apoptosis*. *Toxicol Rep*, 2018. **5**: p. 411-417.
46. He, Q., et al., *MBP-activated autoimmunity plays a role in arsenic-induced peripheral neuropathy and the potential protective effect of mecobalamin*. *Environ Toxicol*, 2021. **36**(6): p. 1243-1253.
47. Rahman, M.A., et al., *Potential therapeutic role of phytochemicals to mitigate mitochondrial dysfunctions in Alzheimer's disease*. *Antioxidants*, 2021. **10**(1): p. 1-18.
48. Prakash, C., M. Soni, and V. Kumar, *Mitochondrial oxidative stress and dysfunction in arsenic neurotoxicity: A review*. *J Appl Toxicol*, 2016. **36**(2): p. 179-88.
49. Prakash, C., M. Soni, and V. Kumar, *Biochemical and Molecular Alterations Following Arsenic-Induced Oxidative Stress and Mitochondrial Dysfunction in Rat Brain*. *Biol Trace Elem Res*, 2015. **167**(1): p. 121-9.
50. King, A.P. and J.J. Wilson, *Endoplasmic reticulum stress: an arising target for metal-based anticancer agents*. *Chem Soc Rev*, 2020. **49**(22): p. 8113-8136.
51. Liu, X., et al., *Neuroglobin alleviates arsenic-induced neuronal damage*. *Environ Toxicol Pharmacol*, 2021. **84**: p. 103604.
52. Delaney, P., et al., *Arsenic induced redox imbalance triggers the unfolded protein response in the liver of zebrafish*. *Toxicol Appl Pharmacol*, 2020. **409**: p. 115307.
53. Rana, S.V.S., *Endoplasmic Reticulum Stress Induced by Toxic Elements-a Review of Recent Developments*. *Biol Trace Elem Res*, 2020. **196**(1): p. 10-19.
54. Wei, S., et al., *Arsenic induces pancreatic dysfunction and ferroptosis via mitochondrial ROS-autophagy-lysosomal pathway*. *J Hazard Mater*, 2020. **384**: p. 121390.
55. Namgung, U. and Z. Xia, *Arsenic induces apoptosis in rat cerebellar neurons via activation of JNK3 and p38 MAP kinases*. *Toxicol Appl Pharmacol*, 2001. **174**(2): p. 130-8.
56. Zhang, W., et al., *Role of pigment epithelium-derived factor (PEDF) on arsenic-induced neuronal apoptosis*. *Chemosphere*, 2019. **215**: p. 925-931.
57. Sinha, K., et al., *Oxidative stress: the mitochondria-dependent and mitochondria-independent pathways of apoptosis*. *Arch Toxicol*, 2013. **87**(7): p. 1157-80.
58. Fu, S.C., et al., *Arsenic induces autophagy-dependent apoptosis via Akt inactivation and AMPK activation signaling pathways leading to neuronal cell death*. *Neurotoxicology*, 2021. **85**: p. 133-144.
59. Dash, R., et al., *Potential roles of natural products in the targeting of proteinopathic neurodegenerative diseases*. *Neurochemistry International*, 2021. **145**.
60. Dash, R., et al., *Emerging potential of cannabidiol in reversing proteinopathies*. *Ageing Research Reviews*, 2021. **65**.
61. Tam, L.M. and Y. Wang, *Arsenic Exposure and Compromised Protein Quality Control*. *Chem Res Toxicol*, 2020. **33**(7): p. 1594-1604.

62. Andersson, S., et al., *Genome-wide imaging screen uncovers molecular determinants of arsenite-induced protein aggregation and toxicity*. J Cell Sci, 2021. **134**(11).
63. Priya Wadgaonkar , F.C., *Connections between endoplasmic reticulum stress-associated unfolded protein response, mitochondria, and autophagy in arsenic-induced carcinogenesis*. Semin Cancer Biol, 2021. **In press**.
64. Dodson, M., et al., *Increased O-GlcNAcylation of SNAP29 Drives Arsenic-Induced Autophagic Dysfunction*. Mol Cell Biol, 2018. **38**(11).
65. Matthew Dodson, M.R.I.V., Bryan Harder, Raul Castro-Portuguez, Silvia D Rodrigues, Pak Kin Wong, Eli Chapman, Donna D. Zhang, *Low-level arsenic causes proteotoxic stress and not oxidative stress*. Toxicology and Applied Pharmacology, 2018. **143**: p. 106-113.
66. Bolt, A.M., et al., *Arsenite-induced autophagy is associated with proteotoxicity in human lymphoblastoid cells*. Toxicology and Applied Pharmacology, 2012. **264**(2): p. 255-261.
67. Weidling, I. and R.H. Swerdlow, *Mitochondrial Dysfunction and Stress Responses in Alzheimer's Disease*. Biology (Basel), 2019. **8**(2).
68. Wang, Y., et al., *Arsenite induce neurotoxicity of common carp: Involvement of blood brain barrier, apoptosis and autophagy, and subsequently relieved by zinc (II) supplementation*. Aquat Toxicol, 2021. **232**: p. 105765.
69. Zhao, H., et al., *The cardiotoxicity of the common carp (Cyprinus carpio) exposed to environmentally relevant concentrations of arsenic and subsequently relieved by zinc supplementation*. Environ Pollut, 2019. **253**: p. 741-748.
70. Wang, Y., et al., *Zinc exerts its renal protection effect on arsenic-exposed common carp: A signaling network comprising Nrf2, NF-κB and MAPK pathways*. Fish Shellfish Immunol, 2020. **104**: p. 383-390.
71. Wang, Y., et al., *Zinc application alleviates the adverse renal effects of arsenic stress in a protein quality control way in common carp*. Environ Res, 2020. **191**: p. 110063.
72. Zhao, H., et al., *Hepatoprotective effects of zinc (II) via cytochrome P-450/reactive oxygen species and canonical apoptosis pathways after arsenite waterborne exposure in common carp*. Chemosphere, 2019. **236**: p. 124869.
73. Wang, Y., et al., *Zinc offers splenic protection through suppressing PERK/IRE1-driven apoptosis pathway in common carp (Cyprinus carpio) under arsenic stress*. Ecotoxicol Environ Saf, 2021. **208**: p. 111473.
74. Cao, A.L., et al., *Zinc deficiency alters the susceptibility of pancreatic beta cells (INS-1) to arsenic exposure*. Biometals, 2019. **32**(6): p. 845-859.
75. Garla, R., et al., *Effect of Zinc on Hepatic and Renal Tissues of Chronically Arsenic Exposed Rats: A Biochemical and Histopathological Study*. Biol Trace Elem Res, 2021.
76. Milton, A.G., P.D. Zalewski, and R.N. Ratnaik, *Zinc protects against arsenic-induced apoptosis in a neuronal cell line, measured by DEVD-caspase activity*. Biometals, 2004. **17**(6): p. 707-13.
77. Wei, Y.Y., et al., *Antagonistic effect of early stage zinc on arsenic toxicity induced preterm birth during pregnancy: evidence from a rural Bangladesh birth cohort*. Chin Med J (Engl), 2021. **134**(5): p. 619-621.
78. Adedara, I.A., et al., *Neuroprotective mechanisms of selenium against arsenic-induced behavioral impairments in rats*. Neurotoxicology, 2020. **76**: p. 99-110.
79. Samad, N., et al., *Inhibitory Effects of Selenium on Arsenic-Induced Anxiety-/Depression-Like Behavior and Memory Impairment*. Biol Trace Elem Res, 2021.
80. Ren, Z., et al., *Effect of Selenium on Brain Injury in Chickens with Subacute Arsenic Poisoning*. Biol Trace Elem Res, 2021.

81. Ren, Z., et al., *Effects of Selenium on Arsenic-Induced Liver Lesions in Broilers*. Biol Trace Elem Res, 2021. **199**(3): p. 1080-1089.
82. Adedara, I.A., et al., *Selenium abates reproductive dysfunction via attenuation of biometal accumulation, oxido-inflammatory stress and caspase-3 activation in male rats exposed to arsenic*. Environ Pollut, 2019. **254**(Pt B): p. 113079.
83. Zwolak, I., *The Role of Selenium in Arsenic and Cadmium Toxicity: an Updated Review of Scientific Literature*. Biol Trace Elem Res, 2020. **193**(1): p. 44-63.
84. Sarkar, N., et al., *Arsenal of Phytochemicals to Combat Against Arsenic-Induced Mitochondrial Stress and Cancer*. Antioxid Redox Signal, 2020. **33**(17): p. 1230-1256.
85. Zhang, Q.Y., et al., *Natural Product Interventions for Chemotherapy and Radiotherapy-Induced Side Effects*. Front Pharmacol, 2018. **9**: p. 1253.
86. Salehi, B., et al., *Therapeutic Potential of Quercetin: New Insights and Perspectives for Human Health*. Acs Omega, 2020. **5**(20): p. 11849-11872.
87. Sarkozi, K., et al., *Green tea and vitamin C ameliorate some neuro-functional and biochemical signs of arsenic toxicity in rats*. Nutritional Neuroscience, 2016. **19**(3): p. 102-109.
88. George, V.C., et al., *In Vitro Protective Potentials of Annona muricata Leaf Extracts Against Sodium Arsenite-induced Toxicity*. Curr Drug Discov Technol, 2015. **12**(1): p. 59-63.
89. Jomova, K., et al., *Arsenic: toxicity, oxidative stress and human disease*. J Appl Toxicol, 2011. **31**(2): p. 95-107.
90. Das, B., S. Mandal, and K. Chaudhuri, *Role of arginine, a component of aqueous garlic extract, in remediation of sodium arsenite induced toxicity in A375 cells*. Toxicology Research, 2014. **3**(3): p. 191-196.
91. Das, T., et al., *Modification of clastogenicity of three known clastogens by garlic extract in mice in vivo*. Environ Mol Mutagen, 1993. **21**(4): p. 383-8.
92. Aslani, M.R., V. Najarnezhad, and M. Mohri, *Individual and combined effect of meso-2,3-dimercaptosuccinic acid and allicin on blood and tissue lead content in mice*. Planta Med, 2010. **76**(3): p. 241-4.
93. Amagase, H., et al., *Intake of garlic and its bioactive components*. J Nutr, 2001. **131**(3s): p. 955S-62S.
94. Gupta, R. and S.J. Flora, *Therapeutic value of Hippophae rhamnoides L. against subchronic arsenic toxicity in mice*. J Med Food, 2005. **8**(3): p. 353-61.
95. Gupta, R. and S.J. Flora, *Effect of Centella asiatica on arsenic induced oxidative stress and metal distribution in rats*. J Appl Toxicol, 2006. **26**(3): p. 213-22.
96. Tiwari, H. and M.V. Rao, *Curcumin supplementation protects from genotoxic effects of arsenic and fluoride*. Food Chem Toxicol, 2010. **48**(5): p. 1234-8.
97. Mishra, D. and S.J. Flora, *Quercetin administration during chelation therapy protects arsenic-induced oxidative stress in mice*. Biol Trace Elem Res, 2008. **122**(2): p. 137-47.
98. Ghosh, A., et al., *Nanoencapsulation of quercetin enhances its dietary efficacy in combating arsenic-induced oxidative damage in liver and brain of rats*. Life Sci, 2009. **84**(3-4): p. 75-80.
99. Bjorklund, G., et al., *Arsenic intoxication: general aspects and chelating agents*. Archives of Toxicology, 2020. **94**(6): p. 1879-1897.
100. Aziz, S.N., K.J. Boyle, and M. Rahman, *Knowledge of arsenic in drinking-water: Risks and avoidance in Matlab, Bangladesh*. Journal of Health Population and Nutrition, 2006. **24**(3): p. 327-335.