

---

Review

# Recent Progress of SERS Nanoprobe for pH Detecting and its Application in Biological Imaging

Lei Zhang<sup>1,\*</sup>, Qianqian Zhao<sup>1</sup>, Zhitao Jiang<sup>1</sup>, Jingjing Shen<sup>1</sup>, Weibing Wu<sup>2</sup>, Xingfen Liu<sup>1</sup>, Quli Fan<sup>1</sup> and Wei Huang<sup>1,3</sup>

<sup>1</sup> Institute of Advanced Materials (IAM), Nanjing University of Posts and Telecommunications (NUPT) 9 Wenyuan Road, Nanjing 210023, China; iamlzhang@njupt.edu.cn

<sup>2</sup> Jiangsu Provincial Key Lab of Pulp & Paper Science & Technology, Nanjing Forestry University, 159 Longpan Road, Nanjing 210023, China; wbwu@njfu.edu.cn

<sup>3</sup> Frontiers Science Center for Flexible Electronics (FSCFE), Shaanxi Institute of Flexible Electronics (SIFE), Shaanxi Institute of Biomedical Materials and Engineering (SIBME), Northwestern Polytechnical University (NPU), 127 West Youyi Road, Xi'an 710072, China; iamwhuang@njupt.edu.cn

\* Correspondence: iamlzhang@njupt.edu.cn

**Abstract:** pH value almost affects the function of cells and organisms in all aspects, so in biology, biochemical and many other research fields, it is necessary to apply simple, intuitive, sensitive, stable detection of pH and base characteristics inside and outside the cell. Therefore, many research groups have explored the design and application of pH probes based on surface enhanced Raman scattering (SERS). In this review article, we discussed the basic theoretical background of explaining the working mechanism of pH SERS sensors, and also briefly described the significance of cell pH measurement, and simply classified and summarized the factors that affected the performance of pH SERS probes. Some applications of pH probes based on surface enhanced Raman scattering (SERS) in intracellular and extracellular pH imaging and the combination of other analytical detection techniques are described. And finally, the development prospect of this field is prospected.

**Keywords:** pH; SERS; probe; detection; imaging

---

## 1. Introduction

It is well known that many life activities in cells are accompanied by changes in pH, so local detection of pH in cells is important to understand the mechanism of their activities. Because mitochondrial respiration and fermentation metabolism produce large amounts of CO<sub>2</sub> and lactic acid, respectively. All tissues produce acid, including tumors. Compared with other ions, the detection and quantification of hydrogen ions in living cells are of more concern in the field of biosensors at present, because they play a crucial role in the physiological and pathological processes of single cells and organisms, and the change of their concentrations directly affects the physiological functions of normal living organisms [1]. This information is essential for a better understanding of a wide range of physiological and metabolic processes as well as some biotechnological applications. Surface enhanced Raman scattering (SERS) has been widely used in many fields due to its

unique advantages such as high sensitivity, strong specificity, good reuse ability and optical stability, especially in biological detection and biological imaging in recent years [2-4]. Compared with other pH detection imaging technologies, the pH probe based on SERS mainly has the following advantages: (1) There is no damage to the detected biological samples; (2) The fluorescence of biological system and the Raman signal of water can be ignored; (3) There will be no quenching or photobleaching. Therefore, the construction of pH SERS probe with good performance is of great significance for the study of physiological activities and related biochemical reactions in cells, which also provides a powerful platform for the pathological study of many diseases.

In this article, the latest progress in the design, development and application of cell pH probes based on surface enhanced Raman scattering (SERS) spectroscopy in detecting various biological systems is reviewed from the aspects of pH Raman signal molecules and sensor substrates. The motivation of measuring cell pH and the mechanism of SERS pH detection was also briefly introduced. In principle, the pH measurement based on SERS mainly relies on the measurement of the corresponding spectral changes of the pH sensor, such as the change of peak height and peak position, etc. Unlike to the direct determination of many other compounds in cells, the determination of pH in cells is usually based on the measurement and analysis of the relationship between the various types of spectral characteristic peaks of the signal molecules. The most important aspect is to select appropriate pH Raman signal molecules, which will respond to the pH and base conditions of the environment and provide the relevant SERS spectrum. Therefore, it is necessary to make a systematic summary and classification of Raman signal molecules required to construct pH SERS probes. Secondly, the structure and assembly design of pH SERS probes is also an important factor affecting the sensitivity and reliability of the sensor, so it is necessary to review its design strategy. Finally, some recent hot research reports on SERS probes for pH imaging in and out of living cells were also summarized. We hope that this review will encourage more researchers to join the research field and provide guidance for new research teams to conduct research in this field.

## 2. The significance of pH SERS probe in the study of physiological activities of cells

### 2.1. Surface enhanced Raman scattering (SERS)

Raman scattering is a very weak phenomenon, but it has been found that the surface enhancement Raman scattering (SERS) effect of organic molecules adsorbed on the surface of plasma nanoparticles (gold, silver, etc.) can increase the original very weak Raman signal by up to 14 orders of magnitude [5], which makes it possible to construct chemical sensors based on the inherent chemical specificity and very low detection limit of Raman spectroscopy. It was first discovered in the mid-1970s by Fleischmann [6] and his colleagues when they measured the Raman scattering of pyridine on a coarse silver electrode, and they attributed this enhancement to the surface area effect with an enhancement factor of  $10^5$ - $10^6$  [7]. Subsequently, Moskovits [8] proposed that the SERS strength was related to the enhanced field excited by local surface plasma in the nanostructured metal. Surface enhanced Raman scattering spectroscopy is a nondestructive and non-destructive photon scattering technique that provides molecular specific information about the vibrational energy levels of molecules. It is a unique vibrational mode based on the target analyte to provide specific chemical information, and has been widely used in a variety of biomedical detection and imaging [9]. Electromagnetic enhancement mechanism and chemical enhancement mechanism are the two main mechanisms of SERS enhancement. The former is mainly related to the resonance excitation of the surface body of metal nanoparticles, while the latter involves the photoinduced charge transfer (CT) transition between substrate Fermi level and molecular energy level [10]. Among them, the improvement of Raman signal in SERS effect mainly comes from the electric field intensity when the plasma nanostructure is irradiated by laser, that is, physical enhancement [11].

## 2.2 Significance of cell pH value in the study of cell physiological activities

Cell pH differences mainly comes from the H<sup>+</sup> and biological chemical water ionization. The concentration of H<sup>+</sup> can affect most aspects of cell function [12], such as cell metabolism [13] (the change of the enzyme active site shape, even make its degeneration inactivation), cytoskeleton elements[14], (actin and tubulin, etc.) crosslinking, aggregation, proliferation and migration, the ability of muscle cells to generate tension [15] and the working efficiency of ion selective channels [16]. The pH value of body fluids, organs, different cells and tissues in the organism is usually strictly regulated by acid-base homeostasis, such as lysosome, endoplasmic reticulum (ER), Golgi apparatus, lipid droplets and other organelles. The regulation and stability of intracellular pH value has a significant impact on a series of physiological activities of cells. In addition, the change of pH value can also change the charge properties of the substrate, so that the substrate can neither bind to the active site nor catalyze [17]. Talley and colleagues were the first to achieve in-situ pH values in cells using a 4-mercaptobenzoic acid functionalized silver nanospheres pH probe [5], recognizing that acid-base reaction molecules within cells are highly dependent on external stimuli [18]. Changes in pH value can also be caused by some cellular or tissue lesions, such as epilepsy, Parkinson's disease, and Alzheimer's disease [19]. Similarly, the pH of cells is not uniform, and different organelles within the same cell have different pH values. For example, the pH value of mitochondria is about 8.0. The pH value of cytoplasm is basically maintained at about 7.2, and the acidity of lysosome is relatively high, about 4.5-5.0. The cell needs to stabilize these values through a series of biochemical reactions and physiological activities. Therefore, it is of great significance to realize the real-time monitoring of the pH of cell tissue for understanding the physiological activities of organisms, and even to study the working mechanism of some diseased cells and tissues.

## 3. PH SERS probe molecules

In recent years, surface enhanced Raman scattering (SERS) has shown a very high application prospect in pH detection of microenvironment, and it is also of great significance to understand various biological processes and multiphase chemical reactions. We know that the reason why pH SERS probes could have a certain response to the acidity and alkalescence of the environment was mainly because the pH probe molecules had a certain pH response. To put it simply, pH probe molecules are mainly a class of substances that are very sensitive to changes in the pH of the surrounding environment [20]. They are functional groups with a series of protonation and deprotonation reactions. When the pH of the external environment changes, their Raman scattering spectra will change accordingly with it. At present, the sensitive molecules mainly used to construct pH SERS probes are some carboxyl, amino and pyridine rings containing three kinds of functional groups with pH response. Among them, the three most representative signal molecules are 4-mercaptobenzoic acid (4-MBA) [21-23], 4-mercaptopyridine (4-Mpy)[24-26], 4-aminobenzene mercaptan (4-ATP)[27, 28], etc. pH sensitive molecules are usually bound together by the formation of sulfhydryl groups and amino groups with precious metals. For these mainstream pH-sensitive molecules, Huang et al. [29] systematically evaluated the pH response range, anti-co-existing ions, accuracy and stability of the pH SERS probes constructed by them. Among them, they demonstrated that 4-MBA exhibited good sensing performance in neutral and alkaline regions, while the pH response range of 4-Mpy and 4-ATP tended to be acidic and neutral. It is worth mentioning that the pH probe constructed using 2-mercaptobenzoic acid (2-ABT) [30] had poor performance. Therefore, this paper mainly discusses the action mechanism and application research of the above three common pH-sensitive molecules with good performance in detail, and will not repeat too much about 2-ABT.

### 3.1. 4-mercaptobenzoic acid (4-MBA)

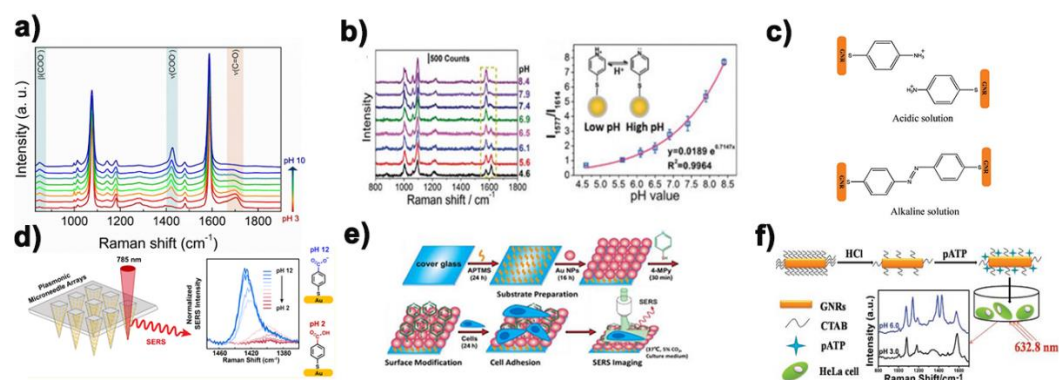
Among the three kinds of mainstream pH probe molecules, 4-mercaptobenzoic acid was often widely used as pH Raman report molecules by various research groups to construct pH SERS probes [35, 36]. The main reasons why it can be used as a Raman report molecule for the construction of pH Raman probe are its simple structure, wide pH response range, high photochemical stability, mercaptan mediated metal surface affinity and its ability to form a single molecular layer on the metal surface through molecular self-assembly. As shown in Figure 1a, the reason why 4-MBA could be used for the construction of pH SERS probe was mainly because its -COO- tensile vibration peak located around  $1420\text{ cm}^{-1}$  increased with the increase of pH value. When pH was greater than  $\sim 6.5$ , the increase of de-proton carboxyl group led to a larger increase, and sometimes the peak value would also be redshifted with the increase of pH value. This suggests that  $\text{-COO}^-$  may be involved in the formation of hydrogen bonds. On the contrary, the strength of the symmetric tensile vibration peak at  $\text{-C=O}$  at  $1690\text{ cm}^{-1}$  will decrease with the decrease of pH [37]. This opposite trend also makes 4-MBA widely used in the field of PH SERS probes. Park et al [33] coated 4-mercurybenzoic acid (4-MBA) functionalized gold nanorods on microneedle nanorods made from a commercial polymer binder and found that the pH probe had a good linear relationship between Raman signal and pH value in the pH range of 5-9. It can also be used for in situ pH detection of human skin (Figure. 1d). These experiments show that 4-mercaptobenzoic acid is indeed a very potential pH-sensitive molecule, and the research on its application in the construction of pH SERS probes has been very mature and extensive.

### 3.2 4-mercaptopyridine (4-Mpy)

In addition to the 4-mercaptobenzoic acid (4-MBA) mentioned above, 4-mercaptopyridine (4-Mpy) is also one of the pH reporter molecules often used by research groups in this field to construct pH SERS probes. The main mechanism of its pH response is that the N in the pyridine ring contains a lone pair of electrons, which can bind to  $\text{H}^+$  in the environment under acidic conditions (Figure. 1b), so it can respond to the pH value in the environment to a certain extent. Bai et al. [32] combined SERS and etching technology to develop a SERS PH nanosensor with 4-mercaptopyridine as probe molecule, and coated its surface with bovine serum protein (BSA) to improve the stability and biocompatibility of nanoparticles. Shen et al. [38] developed and designed a gold nanorod (AuNRs) functionalized by a pH-responsive molecule (4-mercaptopyridine, Mpy) and a peptide that can specifically deliver AuNRs to a target subcellular organelle to determine the pH value of a specific organelle.

### 3.3 4-aminobenzene mercaptan (4-ATP)

The pH-dependent surface enhanced Raman scattering (SERS) of 4-aminobenzene mercaptan (4-ATP) on metal nanoparticles has been proved by a large number of studies, but its mechanism is still not very clear. We believe that with the decrease of pH value, the amino group in 4-aminobenzene mercaptan tends to be protonated, and conversely, it tends to form a pair double bond (Figure 1c). This will make the corresponding Raman scattering spectrum will change accordingly so as to achieve the purpose of pH detection. Ji et al. [10] analyzed the pH-dependent behavior of 4-ATP in a static buffer solution with pH from 3.0 to 2.0, and studied the change sequence of different vibration intensity by using two-dimensional correlation SERS spectrum. They suggest that the amino protonation of 4-ATP in an acidic medium leads to the rearrangement of the electron clouds in the benzene ring, thereby altering the vibration of the ring skeleton. Zong et al. [17] reported a pH SERS probe treated with 4-ATP functionalized hydrochloric acid (HCl) (Figure. 1f), which realized the detection of intracellular pH value. Yang et al. [39] also used 4-ATP to modify a new type of composite nanofiber for the construction of pH SERS probe. Chen's research group [40] reported a 4-ATP functionalized multi-walled nanotubes coated with Au@Ag nanospheres as pH SERS probes, which had a wider pH response range (3.0-14.0), good stability and biocompatibility.



**Figure 1.** (a) Representative SERS spectrum of 4-MBA-AuNPs exposed to solutions at different pH values [31] (b) Normalized SERS spectrum and pH standard curve of 4-Mpy functionalized pH nanosensors and changes of 4-Mpy molecular structure [32] (c) Schematic diagram of 4-ATP-GNRs structure in acidic and alkaline solutions [17] (d) 4-MBA modified plasma microneedle array pH response mechanism diagram [33] (e) Schematic diagram of 4-MPY modified nanospheres array cell pH probe [34] (f) Flow-chart of 4-ATP-GNR nano-pH sensor preparation [17]

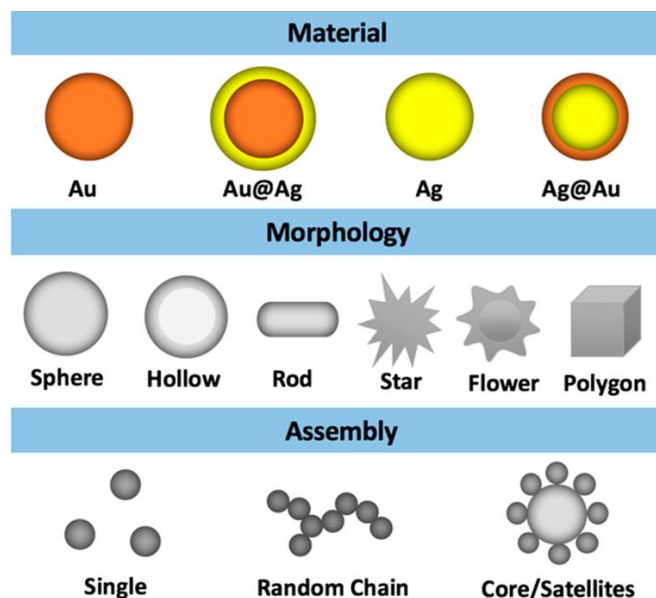
### 3.4 Other novel pH probe molecules

In addition to the above several commonly used pH probe molecules, many interesting new pH probe molecules have been studied and discussed by many research groups in recent years. For example, Lawson [41] reported a novel pH-sensitive disulfide reporter molecule. The difference between 2, 5-dimercapto benzoic acid and 4-mercapto benzoic acid is that the benzene ring of this molecule contains two sulfhydryl groups, which makes it easy to join two metal nanoparticles together to form a dimer. The probe molecule acts as a pH-sensitive molecule and also acts as a dimer bridging molecule. In recent years, Paulo et al. [42] calculated the characterized vibrational assignment of the spectrum of thionicotinamide (TNA), thioisonicotinamide (iTNA) and 5-(4-pyridyl)-1,3,4-oxadiazole-2-thiol (Hpyt) on gold surface and characterize the self-assembled monolayers (SAMs). Although structurally similar, they exhibit different chemical behaviors in the same acid-base environment. At pH=6, the self-assembled monolayer of Hpyt on gold surface is not protonated, while TNA and iTNA are partially protonated and completely protonated, respectively. In the process of developing other excellent pH reporting molecules, Kong et al. [43] designed and utilized a new type of pH composite reporting molecule to develop a pH sensing technology based on SERS. Interestingly, they used arene chromium tricarbonyl linked aminothiophenol ( $\text{Cr}(\text{CO})_3\text{-ATP}$ ) to design novel pH-sensitive molecules. The mechanism of pH-sensing is mainly the protonation and deprotonation of the pH-responsive amino group in ATP, which causes the internal electronic changes at the coupling point between the aromatic ring and  $\text{Cr}(\text{CO})_3$ . This is reflected in the Raman peak movement of the  $-\text{CO}$  tensile vibration  $\sim 1820\text{cm}^{-1}$ , which breaks the traditional method of constructing the probe by analyzing the signal strength of the traditional pH Raman probe.

## 4. pH SERS probe

Surface enhanced Raman scattering (SERS) shows a very high prospect in biomedical detection and biological imaging. The unique optical properties and chemical stability of noble metal nanoparticles make them ideal probes for studying biological systems. For example, silver nanoparticles are used as substrates due to their strong local surface plasmonic resonance (LSPR) properties. Compared with the former, gold nanoparticles have better chemical stability and lower biological toxicity [45]. However, the SERS performance of metal nanoparticles depended on the size, shape and structure of the nanoparticles besides the influence of the material type. In this study, Zhang et al. [44] studied 18

Au and Ag nanoparticles with different morphologies and assemblies, such as ball, rod [46], flower [47], star [48], core/shell [49], hollow [50], octahedron [51], core/satellite [52], and chain-like aggregate (Figure 2). And quantitatively compared their SERS performance in pH detection.



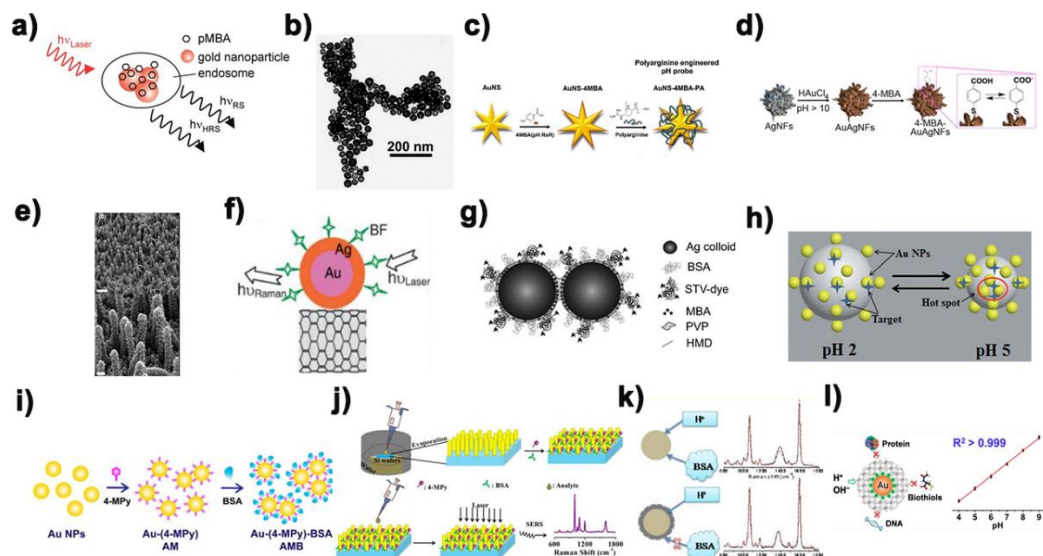
**Figure 2.** Types of Au and Ag nanoparticles with different morphologies and assembly states [44]

Among many designs of pH Raman probes, the traditional pH SERS probes combine pH sensitive molecules with single particles through chemical or physical action, which is a relatively simple design. It has the advantages of small volume and low difficulty in preparation. In earlier study, Kneipp et al. [53] demonstrated a mobile SERS nanosensors made of gold nanospheres' aggregates and 4-mercaptobenzoic acid (pMBA) for monitoring local pH changes in living NIH/3T3 cells. As more and more research groups put into using precious metal nanoparticles functionalized by acid ligands to carry out surface enhanced Raman scattering (SERS) to realize the highly sensitive monitoring of intracellular pH value, researchers gradually turned their attention to the dependence of SERS pH sensitivity on the morphology of nanoparticles (Figure 3a). Schwartzberg et al. [54] realized the SERS measuring scale for hollow nanostructures for the first time and demonstrated it as a pH sensor model system. Compared with the previous pH SERS probes, its resolution was nearly doubled and its accuracy was improved by 10 times (Figure. 3b). This new detection platform is an important step forward in potential biosensor applications. It is well known that the apparent dissociation constant ( $pK_a$ ) of acid ligands (pH Raman reporter molecules) is sensitive to nanoparticle curvature, and that flower-shaped or star-shaped nanoparticles have higher curvature than near-spherical nanoparticles. In addition, the phenomenon that flower-like and stellate-like nanoparticles have single-particle Raman signals has been widely reported. In this connection, Zhang [55] successfully obtained the visualized intracellular pH value ( $pH_i$ ) and the  $i$ -pH curve of living cells through the functionalized nanosar, thus visualizing the dynamic distribution of  $i$ -pH in a single cell (Figure. 3c). Similarly, Zhang's research group [56] compared the  $pK_a$  information behavior and SERS pH sensitivity of near-spherical isotropic and flower-like anisotropic gold-coated silver nanoparticles (Ag@Au NPs and Ag@Au NFs) (Figure 3d). The experimental results show that the flower-like nanoparticles with higher curvature exhibit a narrower pH sensitivity range and a higher sensitivity to pH range than the near-spherical nanoparticles. As we know, the sensitivity of SERS signal of pH probe was not only affected by the nanoparticles, but also the composition of nanoparticles.

Traditional single particle pH sensors based on surface enhanced Raman scattering (SERS) often rely on the physical enhancement effect generated by the aggregation of nanoparticles, but the aggregation degree of nanoparticles is difficult to be accurately controlled, which leads to poor repeatability of SERS signals of this kind of pH sensors. Therefore, many research groups designed a series of array platforms for the construction of pH SERS probes with good repeatability and stability on this basis. Dziegielewski et al. [57] based on chemical etching of GaN crystals developed a substrate similar to "nanowhiskers" array for the construction of pH SERS probe (Figure. 3e). However, the array structure has an obvious disadvantage. Compared with the single particle pH SERS probe, its size is often much larger, which makes it an obstacle to enter the cell to detect pH. Similarly, Zhao's group [58] successfully developed a pH sensor using carbon nanotubes modified with bimetallic nanoparticles (Figure. 3f). A carbon nanotube can continuously measure pH values in its vicinity over a range of 5.6 to 8.2 pH units. As we all know, the size of the dimer is often much smaller than that of the array structure, so on this basis, Pallaoro et al. [59] used hexanediamine (HMD) to connect two silver nanospheres functionalized by pH-sensitive molecule 4-mercaptobenzoic acid together. The addition of the protective agent polyvinylpyrrolidone (PVP) could well prevent the further polymerization of nanoparticles, which made the SERS probe of dimer pH successfully prepared (Figure 3i). Chen et al. [60] systematically studied the formation and evolution of dynamic surface enhanced Raman scattering (SERS) hot spot, and on this basis, they prepared nano gold supported pH responsive poly (2-vinylpyridine) (AuNPs/P2VP) composite microgel through in situ chemical reduction method (Figure. 3g). What is interesting about the pH response mechanism of such particles is that when the pH value of the external environment was from 2.0 to 5.0, the nanometer gap between AuNPs could be easily adjusted, creating a huge SERS hot spot for electromagnetic enhancement.

Traditional pH SERS probes tend to generate different degrees of aggregation in high ionic strength medium and complex biological system, and the probe molecules on it may also interact with biological molecules. As a result, SERS detection results were not reliable enough and biocompatibility was low, which made it difficult for traditional pH SERS probes to be used for intracellular pH detection. In order to overcome this interference, the strategy often used by researchers is to modify a layer of bovine serum protein (BSA) or other substances on the surface of the designed pH SERS probes to increase the biocompatibility and stability of the pH probes, so that the pH SERS probes can be used for cell pH monitoring accurately and sensitively. Based on this, Zheng's research group [61] also prepared a 4-mercaptopyridine functionalized gold nanospheres modified with bovine serum protein (BSA) as pH SERS probe (Figure. 3i), which was used to monitor the pH distribution of living cells. It was found that the nanoparticles modified with bovine serum protein (BSA) had high sensitivity to pH value, good biocompatibility and stability. Bi et al. [62] prepared a gold nanoarray platform with good SERS sensitivity by adopting the efficient evaporation self-assembly method, and on this basis developed a pH sensor based on SERS with high sensitivity bovine serum protein (BSA) coated 4-mercaptopyridine (4-Mpy) connected gold nanorod array (Figure. 3j). It was successfully used to detect pH in the blood of C57BL/6 mice, providing a favorable platform for the development of a sensitive bioon chip platform designed for the point of care device. In a different way, Wang [63] encapsulated the constructed silver nano pH SERS probe in the silicon layer (Figure. 3k), whose small hole could block the large biomolecules outside the sensor without preventing H<sup>+</sup> from entering into it and interacting with 4-mercaptobenzoic acid on the silver surface. The stability, pH sensitivity and reliability of the probe are maintained. Bi et al. [64] developed a simple, sensitive and stable Prussian blue (PB) cage pH response SERS probe (Figure. 3l), which was used to quantify the dynamic change of pH (pHi) in the live fine. Compared with other pH SERS probes, the subnanometer porous PB shells in the structure could allow the free diffusion reaction of H<sup>+</sup> or OH<sup>-</sup> while blocking the contact between proteins, DNA and other biological sulfhydryl compounds in the cell. In addition, the C-N triple bond group of nitrile in PB shell can be used as an internal

standard without background interference to accurately analyze the distribution of probes in the whole cell.



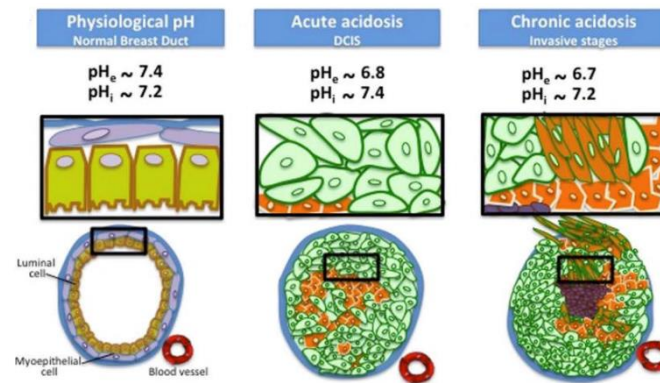
**Figure 3.** Some examples of traditional single particles pH SERS probes (top panel), assembled pH SERS probe (middle panel) and encapsulated pH SERS probe (bottom panel). (a) Schematic diagram of pMBA modified gold nanospheres pH SERS probe [53]. (b) TEM of hollow gold nanospheres [54]. (c) Schematic diagram of preparing gold nanostar pH SERS probe [55]. (d) Schematic diagram of preparing Ag@Au nanoflowers pH SERS probe [56]. (e) TEM of Au-sputtered GaN nanowhiskers array [57]. (f) Schematic diagram of Ag@Au bimetallic nanoparticles modified carbon nanotubes [58]. (g) Schematic diagram of silver nanospheres dimer [59]. (h) Schematic diagram of gold nanospheres supported poly (2-vinylpyridine) composite microgel [60]. (i) Schematic diagram of bovine serum protein (BSA) modified 4-Mpy functionalized gold nanorods [61]. (j) Schematic diagram of serum protein (BSA) coated 4-MPY connected gold nanorod array [62]. (k) Schematic diagram of silicon encapsulated silver nanoparticles with stable pH response [63]. (l) Schematic diagram of Prussian blue (PB) cage gold-coated nanorods with stable pH response [64].

## 5. pH SERS probe was used for cell pH value monitoring and to pH imaging

The pH near the cell surface is called extracellular pH (pHe). Extracellular pH (pHe) and intracellular pH (pHi) are not only the important regulatory factors affecting a variety of physiological activities of cells (such as cell proliferation, differentiation and apoptosis, ion transport, endocytosis, muscle contraction, nucleic acid formation and metabolite release). It is also one of the important parameters for the study of related pathological processes, so the acids and bases inside and outside the cell play an important role in chemical reactions and biological processes [66, 67]. Abnormal pHe values are associated with various pathological states, such as tumor, iron-deficiency stroke, infection, and inflammation [68]. Similarly, small changes in pHi can lead to major changes in metabolism that can lead to disease. It is worth noting that extracellular pH (pHe) is often used as an important marker of cancer. This is mainly due to the Warburg effect and the action of carbonic anhydrase on the cell surface, tumor cells will produce a large amount of extracellular acid, which leads to a slightly lower pHe (6.2-6.9) of tumor cells than pHi (7.2-7.4) [65, 69] (Figure 4). In addition to cancer, there are other diseases that are closely related to pHe and pHi abnormalities in cells, such as quite a number of neurological diseases [70]. Due to the abnormal cell pH (pHe and pHi) in these diseases, the phenomenon of abnormal cell pH has attracted extensive attention in clinical medicine and researchers. Therefore, accurate and sensitive in monitoring and intuitive imaging characterization of pHe

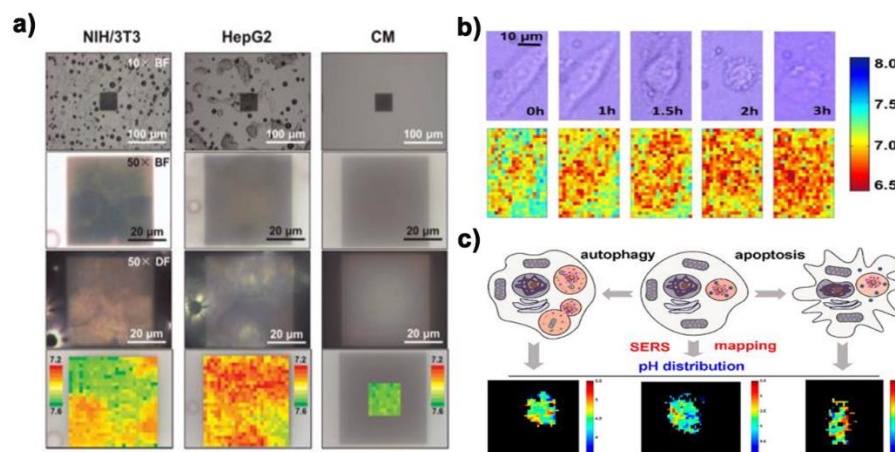


and pHi are very worthy of expectation for the pathological research and the development of new treatment methods of these diseases.



**Figure 4.** Schematic of reversal changes in extracellular and intracellular pH values of cancer cells compared with normal cells [65]

The perception of pH value of living cells is of great significance for understanding various physiological and pathological processes [72, 73]. As an ultrasensitive and nondestructive spectroscopic technology, surface enhanced Raman spectroscopy (SERS) has been widely used in the monitoring and imaging studies of cell pH value [74, 75]. However, there are still three major problems to be overcome when applying pH SERS probe to cell pH value detection and imaging: (1) In the cellular system, the selected peak used to detect the pH response of the overall buffer solution is still reliable; (2) Because the aggregation trend of nanoparticles after being absorbed by cells would increase [76], which would affect the reliability of pH SERS probe monitoring results; (3) Whether a variety of biomolecules existing in the living cell system can replace or interact with Raman probes or probe molecules, and whether pH SERS probe can remain intact, will lead to changes in the stability and reliability of probes [61]. Sun et al. [37] immobilized 4-MBA on Au Quasi-3D Plasma Nanostructure Array (Q3D-PNA) through the chemical action of Au-S bond, and constructed a pH probe based on surface enhanced Raman spectroscopy (SERS), which has high sensitivity and repeatability. It was successfully applied to draw pHe map of living cells (Figure. 5a). Xu et al. [34] used 4-mercolbenzoic acid (4-MBA) functionalized gold nanoparticle array as substrate for pH imaging of three different types of cells (Figure. 5b). Guo et al. [77] developed a nano-microtube with size less than 200nm and SERS activity for detecting intracellular pH value (pHi) of a single eukaryotic cell. Li et al. [71] prepared a simple plasma Raman probe (SMB) using nano stars as a Raman enhanced substrate, 4-Mpy as a Raman reporter molecule, and bovine serum albumin (BSA) as a protective molecule. Subsequently, SERS imaging technology was used to monitor the changes of lysosomal pH in the process of autophagy and apoptosis. According to SERS imaging, the pH value of each pixel was given, so that the pHi distribution map could be drawn (Figure. 5c).



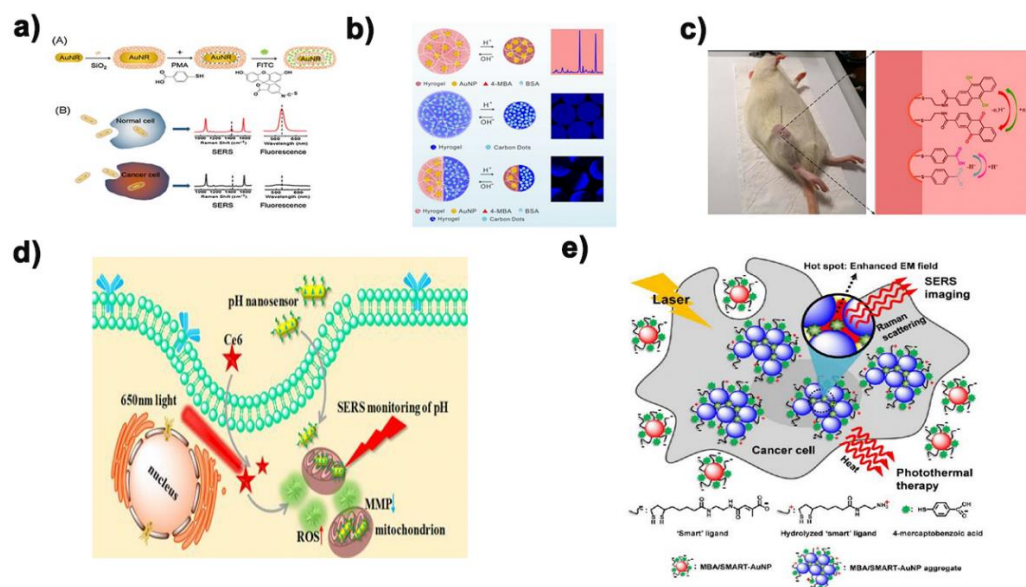
**Figure 5.** (a) Optical images and pH SERS map of NIH/3T3 and HepG2 cells after culture on 4-MBA modified Q3D-PNA SERS substrates [37] (b) Bright field microscope image(upper panel) and real-time in situ pH images of a living cell (lower panel) [34] (c) In situ SERS imaging and schematic of pH during autophagy and apoptosis of lysosomes [71]

## 6. pH SERS probe combined with other technologies

In numerous pH imaging fluorescence, because its cost is relatively low and good security in vitro research, it is widely used in cell pH monitoring imaging[78, 79]. However, in cell pH detection and imaging, fluorescence spectrum technology has defects such as easy quenching, photobleaching, large background interference and slow imaging, while SERS spectrum technology did not have these problems. Based on this, Yang et al. [80] constructed a nano-probe with dual signals of fluorescence and surface enhanced Raman scattering (SERS) in recent years to sense the pH value in cells (Figure. 6a). In this study, they designed a double-signal core-shell nanoprobe with fluorescence and SERS by co-functionalization of SiO<sub>2</sub>-coated gold nanorods by using fluorescein isothiocyanate (FITC) and p-mercaptobenzoic acid (pMBA). Then through the study and analysis of the fluorescence and SERS spectra of the nano-probes at different pH values, the double-signal response to the intracellular pH value could be realized. Different from the former, Yue et al. [81] prepared a new generation of fluorescence-SERS dual-mode pH sensors by embed functionalized nanoparticles into stimulus-responding hydrogels. Such sensors were equipped with synergistic enhancement of the properties of each component: improving the mechanical strength of hydrogels and reducing nanoparticle aggregation (Figure. 6b). The complementary advantages of fluorescence and SERS in response to pH made it successfully applied to study the changes of pH value in microenvironment caused by external stimulation of different cells. Yue's research group [82] also successfully developed a nanosensor based on fluorescence imaging and SERS spectrum in recent two years to monitor the dynamic changes of pH in mitochondrial microenvironment of two kinds of cancer cells (HepG2 and MCF-7 cells) and one kind of normal cells (LO2 cells) during the process of PDT (Figure. 6d). This study also provides a reference for evaluating the side effects of PDT.

In addition to enhancing the reliability of pH sensors by combining with fluorescence spectroscopy technology, simple, convenient, fast and sensitive electrochemistry [85] has also gradually entered the field of view of researchers. Pan's research group [83] designed a surface enhanced Raman scattering (SERS) active microneedle to detect redox potential and pH value at rat joints. The design of composite SERS probe was based on the microneedles used in traditional Chinese medicine acupuncture and moxibustion. The grooves formed by chemical etching on the microneedles contain two kinds of molecules, namely redox sensitive and pH sensitive, respectively, and then enter the muscle at the minimum cost of damage, making the muscle undergo a redox state and pH dynamic

evolution for 5 minutes (Figure. 6c). This has advanced the pathological study of diseases such as arthritis, and will also be a multifunctional analytical tool to advance biomedical research. Many research groups have made many attempts and efforts to combine pH detection with biological diagnosis and treatment. Jung et al. [84] designed a nano-probe with both pH response and photothermal therapy (Figure. 6e). Multi-function pH probe in the golden ball surface is designed to develop a positive charge and negative charge. Under the action of weak acid, they are induced to gather together rapidly by electrostatic interaction, while the emergence of coupled plasma model causes their absorption to transfer to the near-infrared region, where a direct selective absorption transfer to depth is carried out, through tissue and heat treatment (Figure. 6d).



**Figure 6.** Some examples of PH SERS probe combined with other technologies. (a) AuNRs@SiO<sub>2</sub>@PMA-FITC nanoprobe preparation and its mechanism in cells [80]. (b) Schematic diagram of pH-induced swell and shrink of single-phase hydrogel microparticles encapsulating AuNPs-(4MBA)-BSA (upper), single-phase hydrogel microparticles encapsulating carbon dots (middle), and Janus hydrogel microparticles encapsulating AuNPs-(4MBA)-BSA and carbon dots respectively in dual semispheres (lower) [81]. (c) Schematic diagram of multiplexing SERS active microneedles for simultaneous measurement of redox potential and pH value [83]. (d) Procedure of the selective determinations of microenvironmental changes in mitochondria during PDT progress [83]. (e) Schematic diagram of the working mechanism of 4-MBA-functionalized smart nanoparticles in cancer cells [84].

## 7. Conclusion

High sensitivity of SERS, excellent multiplexing ability of a single excitation source, low background and minimal photobleaching of SERS nanotags lead to its application in cell pH detection imaging technology becoming more and more widely. At present, the main problems of developing pH SERS probes that can be used for cell pH detection and imaging focus on ensuring that they can maintain good detection ability and avoid the interference of microenvironment, which requires researchers to design and construct well-defined, uniform and stable metallic nanostructures and assemblies. In addition, the synthesis and discovery of pH-sensitive Raman reporter molecules with highly stable and repeatable signals could be an important step forward in this field. In recent years, the pH SERS probes reported tended to have a wide pH response range, so the subsequent pH SERS probes should develop towards a narrower response range and higher sensitivity, so that they could be better applied in biological systems. In addition, it is also very important to further develop highly selective and non-toxic probe structures. We believe that

the additional complementary information obtained by combining with other different independent methods can improve the reliability of probe signals, or become a multi-functional intelligent probe so that pH SERS probes can be better applied in the biomedical field.

By summarizing and classifying the latest and most representative research reports on pH SERS probes, this paper mainly reviewed the design and assembly strategies of several major types of pH probes and their structures in this field, as well as the latest progress in pH imaging in and out of cells. At present, the purpose of the research groups to study pH SERS probe is mainly to make the signal stable and reliable, and to make the imaging fast and large. In addition, in the construction of probes for cell pH monitoring and SERS imaging, the design of protective matrix and the enhancement of biocompatibility of nanometer tags also need the efforts of future researchers.

## References

1. Pezzulo, A.A.; Tang, X.; Hoegger, M.J.; Abou Alaiwa, M.H.; Ramachandran, S.; Moninger, T.O.; Karp, P.H.; Wohlford-Lenane, C.L.; Haagsman, H.P.; Martin van Eijk; et al. Reduced airway surface pH impairs bacterial killing in the porcine cystic fibrosis lung. *Nature* **2012**, *487*, 109-113.
2. Malek, K.; Jaworska, A.; Krala, P.; Kachamakova-Trojanowska, N.; Baranska, M. Imaging of macrophages by surface enhanced Raman spectroscopy (SERS). *Bio. Spectrosc. Imaging* **2013**, *2*, 349-357.
3. Zhang, W.; Jiang, L.; Piper, J.A.; Y., Wang. SERS nanotags and their applications in biosensing and bioimaging. *J. Anal. Test.* **2018**, *2*, 26-44.
4. Ma, D.; Zheng, J.; Tang, P.; Xu, W.; Qing, Z.; Yang, S.; Li, J.; Yang R. Quantitative monitoring of hypoxia-induced intracellular acidification in lung tumor cells and tissues using activatable surface-enhanced Raman scattering nanoprobe. *Anal. Chem.* **2016**, *88*, 11852-11859.
5. Talley, C.E.; Jusinski, L.; Hollars, C.W.; Lane, S.M.; Huser, T. Intracellular pH sensors based on surface-enhanced Raman scattering. *Anal. Chem.* **2004**, 7064-7068.
6. Fleischmann, M.; Hendra, P.J.; McQuillan, A.J. Raman spectra of pyridine adsorbed at a silver electrode. *Chem. Phys. Lett.* **1974**, *26*, 163-166.
7. Kwart, H.; George, T.J. Anomalously intense Raman spectra of pyridine at a silver electrode. *J. Am. Chem. Soc.* **1977**, *99*, 5215-5217.
8. Moskovits, M. Surface roughness and the enhanced intensity of Raman scattering by molecules adsorbed on metals. *J. Chem. Phys.* **1978**, *69*, 4159-4161.
9. Qiu, C.; Cheng, Z.; Lv, C.; Wang, R.; Yu, F. Development of bioorthogonal SERS imaging probe in biological and biomedical applications. *Chin. Chem. Lett.* **2021**.(accepted)
10. Ji, W.; Spegazzini, N.; Kitahama, Y.; Chen, Y.; Zhao, B.; Ozaki, Y. pH-response mechanism of p-aminobenzenethiol on Ag nanoparticles revealed by two-dimensional correlation surface enhanced Raman scattering spectroscopy. *J. Phys. Chem. Lett.* **2012**, *3*, 3204-3209.
11. Langer, J.; Jimenez de Aberasturi, D.; Aizpurua, J.; Alvarez-Puebla, R.A.; Auguie, B.; Baumberg, J.J.; Bazan, G.C.; Bell, S. E.J.; Boisen, A.; Brolo, A.G.; et al. Present and future of surface-enhanced Raman scattering. *ACS nano* **2020**, *14*, 28-117.
12. Swietach, P. What is pH regulation, and why do cancer cells need it? *Cancer Metastasis Rev.* **2019**, *38*, 5-15.
13. Tatapudy, S.; Aloisio, F.; Barber, D.; Nystul, T. Cell fate decisions: emerging roles for metabolic signals and cell morphology. *EMBO Rep.* **2017**, *18*, 2105-2118.
14. Schotthofer, S.K.; Bohrmann, J. Bioelectrical and cytoskeletal patterns correlate with altered axial polarity in the follicular epithelium of the drosophila mutant gurken. *BMC Dev. Biol.* **2020**, *20*, 5.
15. Miller, S.; Ptok, M.; Jungheim, M. Influence of acid swallows on the dynamics of the upper esophageal sphincter.

- Dysphagia* **2021**, 36, 443-455.
16. Park, J.; Tabet, A.; Moon, J.; Chiang, P.H.; Koehler, F.; Sahasrabudhe, A.; Anikeeva, P. Remotely controlled proton generation for neuromodulation. *Nano Lett.* **2020**, 20, 6535-6541.
  17. Zong, S.; Wang, Z.; Yang, J.; Cui, Y. Intracellular pH sensing using p-aminothiophenol functionalized gold nanorods with low cytotoxicity. *Anal. Chem.* **2011**, 83, 4178-4183.
  18. Piotrowski, Piotr; Bukowska, Jolanta. Ion permeation through silica coating of silver nanoparticles functionalized with 2-mercaptoethanesulfonate anions: SiO<sub>2</sub>-encapsulated SERS probes for metal cations. *J. Phys. Chem. C* **2016**, 120, 12092-12099.
  19. Fang, B.; Wang, D.; Huang, M.; Yu, G.; Li, H. Hypothesis on the relationship between the change in intracellular pH and incidence of sporadic Alzheimer's disease or vascular dementia. *Int. J. Neurosci.* **2010**, 120, 591-595.
  20. Wang, Y.; Yan, B.; Chen, L. SERS tags: novel optical nanoprobe for bioanalysis. *Chem. Rev.* **2012**, 113, 1391-1428.
  21. Xie, M.; Li, F.; Gu, P.; Wang, F.; Qu, Z.; Li, J.; Wang, L.; Zuo, X.; Zhang, X.; Shen, J. Gold nanoflower-based surface-enhanced Raman probes for pH mapping of tumor cell microenvironment. *Cell Proliferation* **2019**, 52, e12618.
  22. Potara, M.; Nagy-Simon, T.; Craciun, A.M.; Suarasan, S.; Licarete, E.; Imre-Lucaci, F.; Astilean, S. Carboplatin-loaded, Raman-encoded, chitosan-coated Silver nanotriangles as multimodal traceable nanotherapeutic delivery systems and pH reporters inside human ovarian cancer cells. *ACS Appl. Mater. Interfaces* **2017**, 9, 32565-32576.
  23. Johnson, R.P.; Richardson, J.A.; Brown, T.; Bartlett, P.N. Real-time surface-enhanced Raman spectroscopy monitoring of surface pH during electrochemical melting of double-stranded DNA. *Langmuir* **2012**, 28, 5464-5470.
  24. Scott, B.L.; Carron, K.T. Dynamic Raman scattering studies of coated gold nanoparticles: 4-mercaptopyridine, 4-mercaptophenol, and benzenethiol. *J. Phys. Chem. C* **2016**, 120, 20905-20913.
  25. Chao, Y.; Zhou, Q.; Li, Y.; Yan, Y.; Wu, Y.; Zheng, J. Potential dependent surface-enhanced Raman scattering of 4-mercaptopyridine on electrochemically roughened silver electrodes. *J. Phys. Chem. C* **2007**, 111, 16990-16995.
  26. Zhang, H.; He, H.X.; Wang, J.; Liu, Z.F. Atomic force microscopy evidence of citrate displacement by 4-mercaptopyridine on gold in aqueous solution. *Langmuir* **2000**, 16, 4554-4557.
  27. Pienpinijtham, P.; Vantasin, S.; Kitahama, Y.; Ekgasit, S.; Ozaki, Y. Nanoscale pH profile at a solution/solid interface by chemically modified tip-enhanced Raman scattering. *J. Phys. Chem. C* **2016**, 120, 14663-14668.
  28. Kim, K.; Kim, K.L.; Shin, D.; Choi, J.Y.; Shin, K.S. Surface-enhanced Raman scattering of 4-aminobenzenethiol on Ag and Au: pH dependence of b<sub>2</sub>-type bands. *J. Phys. Chem. C* **2012**, 116, 4774-4779.
  29. Huang, Y.; Liu, W.; Wang, D.; Gong, Z.; Fan, M. Evaluation of the intrinsic pH sensing performance of surface-enhanced Raman scattering pH probes. *Microchem. J.* **2020**, 154,
  30. Ma, C.; Harris, J.M. Surface-enhanced Raman spectroscopy investigation of the potential-dependent acid-base chemistry of silver-immobilized 2-mercaptobenzoic acid. *Langmuir* **2011**, 27, 3527-3533.
  31. Capoccealo, A.; Mammucari, D.; Brasili, F.; Fasolato, C.; Bordini, F.; Postorino, P.; Domenici, F. Exploring the potentiality of a SERS-active pH nano-biosensor. *Front Chem.* **2019**, 7, 413.
  32. Bai, L.; Wang, X.; Zhang, K.; Tan, X.; Zhang, Y.; Xie, W. Etchable SERS nanosensor for accurate pH and hydrogen peroxide sensing in living cells. *Chem. Commun.* **2019**, 55, 12996-12999.
  33. Park, J.E.; Yonet-Tanyeri, N.; Ende, E.V.; Henry, A.I.; Perez White, B.E.; Mrksich, M.; Van Duyne, R. P. Plasmonic microneedle arrays for in situ sensing with surface enhanced Raman spectroscopy (SERS). *Nano Lett.* **2019**, 19, 6862-6868.
  34. Xu, M.; Ma, X.; Wei, T.; Lu, Z.X.; Ren, B. In situ imaging of live-cell extracellular pH during cell apoptosis with

- surface-enhanced Raman spectroscopy. *Anal. Chem.* **2018**, *90*, 13922-13928.
35. Zhao, X.; Campbell, S.; Wallace, G.Q.; Claing, A.; Bazuin, G.; Masson, J. Branched Au nanoparticles on nanofibers for surface-enhanced Raman scattering sensing of intracellular pH and extracellular pH gradients. *ACS Sens.* **2020**, *5*, 2155-2167.
36. Scarpitti, B.T.; Morrison, A.M.; Buyanova, M.; Schultz, Z.D. Comparison of 4-mercaptobenzoic acid surface-enhanced Raman spectroscopy-based methods for pH determination in cells. *Appl. Spectrosc.* **2020**, *74*, 1423-1432
37. Sun, F.; Zhang, P.; Bai, T.; Galvan, D.D.; Hung, H.C.; Zhou, N.; Jiang, S.; Yu, Q. . Functionalized plasmonic nanostructure arrays for direct and accurate mapping extracellular pH of living cells in complex media using SERS. *Biosens. Bioelectron.* **2015**, *73*, 202-207.
38. Shen, Y.; Liang, L.; Zhang, S.; Huang, D.; Zhang, J.; Xu, S.; Liang, C.; Xu, W. Organelle-targeting surface-enhanced Raman scattering (SERS) nanosensors for subcellular pH sensing. *Nanoscale* **2018**, *10*, 1622-1630.
39. Yang, T.; Ma, J.; Zhen, S.J.; Huang, C.Z. Electrostatic assemblies of well-dispersed AgNPs on the surface of electrospun nanofibers as highly active SERS substrates for wide-range pH sensing. *ACS Appl. Mater. Interfaces* **2016**, *8*, 14802-14811.
40. Chen, P.; Wang, Z.; Zong, S.; Chen, H.; Zhu, D.; Zhong, Y.; Cui, Y. A wide range optical pH sensor for living cells using Au@Ag nanoparticles functionalized carbon nanotubes based on SERS signals. *Anal. Bioanal. Chem.* **2014**, *406*, 6337-6346.
41. Lawson, L.; Huser, T. Synthesis and characterization of a disulfide reporter molecule for enhancing pH measurements based on surface-enhanced Raman scattering. *Anal. Chem.* **2012**, 3574-3580.
42. Tércio de F. Paulo, † Rômulo A. Ando, † Izaura C. N. Diógenes, and Marcia L. A. Temperini. Understanding the equilibria of thio compounds adsorbed on gold by surface-enhanced Raman scattering and density functional theory calculations. *J. Phys. Chem. C* **2013**, *117*, 6275-6283.
43. Kong, K.V.; Dinish, U.S.; On Lau, W.K.; Olivo, M. Sensitive SERS-pH sensing in biological media using metal carbonyl functionalized planar substrates. *Biosens. Bioelectron.* **2014**, *54*, 135-140.
44. Zhang, Z.; Bando, K.; Mochizuki, K.; Taguchi, A.; Fujita, K.; Kawata, S. Quantitative evaluation of surface-enhanced Raman scattering nanoparticles for intracellular pH sensing at a single particle level. *Anal. Chem.* **2019**, *91*, 3254-3262.
45. Gao, C.; Hu, Y.; Wang, M.; Chi, M.; Yin, Y. Fully alloyed Ag/Au nanospheres: combining the plasmonic property of Ag with the stability of Au. *J. Am. Chem. Soc.* **2014**, *136*, 7474-7479.
46. Khlebtsov, B.N.; Khanadeev, V.A.; Burov, A.M.; Le Ru, E.C.; Khlebtsov, N.G. Reexamination of surface-enhanced Raman scattering from gold nanorods as a function of aspect ratio and shape. *J. Phys. Chem. C* **2020**, *124*, 10647-10658.
47. Xie, J.; Zhang, Q.; Lee, J.Y.; Wang, D.L.C. The synthesis of SERS-active gold nanoflower tags for in vivo applications. *ACS nano* **2008**, *2*, 2473-2480.
48. Jimenez de Aberasturi, D.; Serrano-Montes, A.B.; Langer, J.; Henriksen-Lacey, M.; Parak, W.J.; Liz-Marzán, L.M. Surface enhanced Raman scattering encoded gold nanostars for multiplexed cell discrimination. *Chem. Mater.* **2016**, *28*, 6779-6790.
49. Zhao, J.; Zhang, K.; Li, Y.; Ji, J.; Liu, B. High-resolution and universal visualization of latent fingerprints based on aptamer-functionalized core-shell nanoparticles with embedded SERS reporters. *ACS Appl. Mater. Interfaces* **2016**, *8*, 14389-14395.
50. Sanles-Sobrido, M.; Exner, W.; Rodríguez-Lorenzo, L.R.; Rodríguez-González, B.; Correa-Duarte, M.A.; Álvarez-Puebla, R.A.; Liz-Marzán, L.M. Design of SERS-encoded, submicron, hollow particles through confined growth of encapsulated metal nanoparticles. *J. Am. Chem. Soc.* **2009**, *131*, 2699-2705.

51. Chang, C.C.; Wu, H.L.; Kuo, C.H.; Huang, M.H. Hydrothermal synthesis of monodispersed octahedral gold nanocrystals with five different size ranges and their self-assembled structures. *Chem. Mater.* **2008**, *20*, 7570-7574.
52. Rong, Z.; Xiao, R.; Wang, C.; Wang, D.; Wang, S. Plasmonic Ag core-satellite nanostructures with a tunable silica-spaced nanogap for surface-enhanced Raman scattering. *Langmuir* **2015**, *31*, 8129-8137.
53. Kneipp, J.; Kneipp, H.; Wittig, B.; Kneipp, K. Following the dynamics of pH in endosomes of live cells with SERS nanosensors. *J. Phys. Chem. C* **2010**, *114*, 7421-7426.
54. Schwartzberg, A.M.; Oshiro, T.Y.; Zhang, J.Z.; Huser, T.; Talley, C.E. Improving nanoprobe using surface-enhanced Raman scattering from 30-nm hollow gold particles. *Anal. Chem.* **2006**, 4732-4736.
55. Zhang, Y.; Aberasturi, D.J.; Henriksen-Lacey, M.; Langer, J.; Liz-Marzán, L.M. Live-cell surface-enhanced Raman spectroscopy imaging of intracellular pH: from two dimensions to three dimensions. *ACS Sens.* **2020**, *5*, 3194-3206.
56. Zhang, Q.; Wen, H.; Watanabe, K.; Kotani, I.; Ricci, M.; Fortuni, B.; Dao, A.T.N.; Masuhara, A.; Hirai, K.; Kasai, H. Low-cytotoxic gold-coated silver nanoflowers for intracellular pH sensing. *ACS Appl. Nano Mater.* **2020**, *3*, 7643-7650.
57. Dziegielewska, I.; Krajczewski, J.; Dzwolak, W. pH-responsive mixed-thiol-modified surface of roughened GaN: A wettability and SERS study. *Appl. Surf. Sci.* **2020**, 502,
58. Zhao, L.; Shingaya, Y.; Tomimoto, H.; Huang, Q.; Nakayama, T. Functionalized carbon nanotubes for pH sensors based on SERS. *J. Mater. Chem. C* **2008**, *18*, 4759-4761.
59. Pallaoro, A.; Braun, G.B.; Reich, N.O.; Moskovits, M. Mapping local pH in live cells using encapsulated fluorescent SERS nanotags. *Small* **2010**, *5*, 618-622.
60. Chen, H.; You, T.; Jiang, L.; Gao, L.; Yin, P. Creating dynamic SERS hotspots on the surface of pH-responsive microgels for direct detection of crystal violet in solution. *RSC Adv.* **2017**, *7*, 32743-32748.
61. Zheng, X.S.; Hu, P.; Cui, Y.; Zong, C.; Feng, J.M.; Wang, X.; Ren, B. BSA-coated nanoparticles for improved SERS-based intracellular pH sensing. *Anal. Chem.* **2014**, *86*, 12250-12257.
62. Bi, L.; Wang, Y.; Yang, Y.; Li, Y.; Mo, S.; Zheng, Q.; Chen, L. Highly sensitive and reproducible SERS sensor for biological pH detection based on a uniform gold nanorod array platform. *ACS Appl. Mater. Interfaces* **2018**, *10*, 15381-15387.
63. Wang, F.; Widejko, R.G.; Yang, Z.; Nguyen, K.T.; Chen, H.; Fernando, L.P.; Christensen, K.A.; Anker, J.N. Surface-enhanced Raman scattering detection of pH with silica-encapsulated 4-mercaptobenzoic acid-functionalized silver nanoparticles. *Anal. Chem.* **2012**, *84*, 8013-8019.
64. Bi, Y.; Di, H.; Zeng, E.; Li, Q.; Li, W.; Yang, J.; Liu, D. Reliable quantification of pH variation in live cells using prussian blue-caged surface-enhanced Raman scattering probes. *Anal. Chem.* **2020**, *92*, 9574-9582.
65. Damaghi, M.; Wojtkowiak, J. W.; Gillies, R. J. pH sensing and regulation in cancer. *Front Physiol.* **2013**, *4*, 1-10.
66. Lardner, A. The effects of extracellular pH on immune function. *J. Leukocyte Biol.* **2001**, *69*, 522-530.
67. Jaworska, A.; Malek, K.; Kudelski, A. Intracellular pH-Advantages and pitfalls of surface-enhanced Raman scattering and fluorescence microscopy -A review. *Spectrochim. Acta Part A* **2021**, 251, 119410.
68. Liu, L.; Dou, C.X.; Liu, J.W.; Wang, X.N.; Ying, Z.M.; Jiang, J.H. Cell surface-anchored DNA nanomachine for dynamically tunable sensing and imaging of extracellular pH. *Anal. Chem.* **2018**, *90*, 11198-11202.
69. Hashim, A.I.; Zhang, X.; Wojtkowiak, J.W.; Martinez, G.V.; Gillies, R.J. Imaging pH and metastasis. *NMR Biomed.* **2011**, *24*, 582-591.
70. Munteanu, R.E.; Stanica, L.; Gheorghiu, M.; Gaspar, S. Measurement of the extracellular pH of adherently growing mammalian cells with high spatial resolution using a voltammetric pH microsensor. *Anal. Chem.* **2018**, *90*, 6899-6905.

71. Li, S.S.; Zhang, M.; Wang, J.H.; Yang, F.; Kang, B.; Xu, J.J.; Chen, H.Y. Monitoring the changes of pH in lysosomes during autophagy and apoptosis by plasmon enhanced Raman imaging. *Anal. Chem.* **2019**, *91*, 8398-8405.
72. Lee, Y.J.; Kang, H.C.; Hu, J.; Nichols, J.W.; Jeon, Y.S.; Bae, Y.H. pH-sensitive polymeric micelle-based pH probe for detecting and imaging acidic biological environments. *Biomacromolecules* **2012**, *13*, 2945-2951.
73. Lin, M.T.; Beal, M.F. Mitochondrial dysfunction and oxidative stress in neurodegenerative diseases. *Nature* **2006**, *443*, 787-795.
74. Dey, S.; Trau, M.; Koo, K. M. Surface-enhanced Raman spectroscopy for cancer immunotherapy applications: opportunities, challenges, and current progress in nanomaterial strategies. *Nanomaterials* **2020**, *10*, 1145-1160.
75. Zhang, Y.; Mi, X.; Tan, X.; Xiang, R. Recent progress on liquid biopsy analysis using surface-enhanced Raman spectroscopy. *Theranostics* **2019**, *9*, 491-525.
76. Kneipp, J.; Kneipp, H.; McLaughlin, M.; Brown, D.; Kneipp, K. In vivo molecular probing of cellular compartments with gold nanoparticles and nanoaggregates. *Nano Lett.* **2006**, *6*, 2225-2231.
77. Guo, J.; Sesena Rubfiaro, A.; Lai, Y.; Moscoso, J.; Chen, F.; Liu, Y.; Wang, X.; He, J. Dynamic single-cell intracellular pH sensing using a SERS-active nanopipette. *Analyst* **2020**, *145*, 4852-4859.
78. Dong, B.; Song, X.; Wang, C.; Kong, X.; Tang, Y.; Lin, W. Dual site-controlled and lysosome-targeted intramolecular charge transfer-photoinduced electron transfer-fluorescence resonance energy transfer fluorescent probe for monitoring pH changes in living cells. *Anal. Chem.* **2016**, *88*, 4085-4091.
79. Yu, F.; Jing, X.; Lin, W. Single-/dual-responsive pH fluorescent probes based on the hybridization of unconventional fluorescence and fluorophore for imaging lysosomal pH changes in HeLa cells. *Anal. Chem.* **2019**, *91*, 15213-15219.
80. Yanga, G.; Zhanga, Q.; Lianga, Y.; Liub, H.; Qua, L.; Li, H. Fluorescence-SERS dual-signal probes for pH sensing in live cells. *Colloids Surf. A* **2019**, *562*, 289-295.
81. Yue, S.; Sun, X.; Wang, N.; Wang, Y.; Wang, Y.; Xu, Z.; Chen, M.; Wang, J. SERS-fluorescence dual-mode pH-sensing method based on Janus microparticles. *ACS Appl. Mater. Interfaces* **2017**, *9*, 39699-39707.
82. Yue, J.; Shen, Y.; Liang, L.; Cong, L.; Xu, W.; Shi, W.; Chongyang Liang, C.; Xu, S. Revealing mitochondrial microenvironmental evolution triggered by photodynamic therapy. *Anal. Chem.* **2020**, *92*, 6081-6087.
83. Pan, C.; Li, X.; Sun, J.; Li, Z.; Zhang, L.; Qian, W.; Wang, P.; Dong, J. A multiplexed SERS-active microneedle for simultaneous redox potential and pH measurements in rat joints. *ACS Appl. Bio Mater.* **2019**, *2*, 2102-2108.
84. Jung, S.; Nam, J.; Hwang, S.; Park, J.; Hur, J.; Im, K.; Park, N.; Kim, S. Theragnostic pH-sensitive gold nanoparticles for the selective surface enhanced Raman scattering and photothermal cancer therapy. *Anal. Chem.* **2013**, *85*, 7674-7681.
85. Wang, H.; Zhang, X.; Wang, S.; Ma, H.; Shen, Y.; Wang, X. A multifunctional electrochemical sensor for the simultaneous detection of ascorbic acid, dopamine, uric acid, and nitrite. *J. AOAC. Int.* **2021**, *104*, 860-866.