
Article

Japanese honeybees (*Apis cerana japonica* Radoszkowski, 1877) may be resilient to land use change

Philip Donkersley^{1*}, Lucy Covell¹ and Takahiro Ota²

¹ Lancaster Environment Centre, Lancaster University, Lancaster, LA1 4YQ, United Kingdom

² Nagasaki University, Nagasaki, 852-8521, Japan

* Correspondence: donkersleyp@gmail.com

Simple Summary: Pollinators are threatened globally by growing urban sprawl and agriculture. The Western Honeybee (*Apis mellifera*) readily adapts to whatever food is available, so people have made it the most widely distributed pollinator across the world. Previous research has suggested that the Western Honeybee may be less resilient to land use change outside of its natural range. This study examines a different honeybee species – the Japanese Honeybee (*Apis cerana japonica*). Unlike the Western Honeybee, this species is found almost exclusively in its natural range in Japan. Consequently, it may be better adapted to its local food sources and therefore more resilient. Working in southern Japan, in the Nagasaki and Saga prefectures, we looked at the nectar and pollen that the Japanese Honeybee feeds on. Their food intake was then examined in relation to local land use composition. We found minimal impact of increasing urban sprawl on the forage of the Japanese Honeybee. This goes against previous studies on the Western Honeybee elsewhere in the world. Though in need of a direct comparison with Western Honeybee, these preliminary results could be due to differences in urban green infrastructure in Japan, or due to an adaptation by the Japanese honeybee to its surroundings.

Abstract: Pollinators are being threatened globally by urbanisation and agricultural intensification, driven by a growing human population. Understanding these impacts on landscapes and pollinators is critical to ensuring a robust pollination system. Remote sensing data on land use attributes have previously linked honeybee nutrition to land use in the Western Honeybee (*Apis mellifera* L.). Here, we instead focus on the less commonly studied *Apis cerana japonica* – the Japanese Honeybee. Our study presents preliminary data comparing forage (honey and pollen) with land use across a rural-urban gradient from 22 sites in Kyushu, southern Japan. Honey samples were collected from hives between June 2018 and August 2019. Pollen were collected and biotyped from hives in urban and rural locations (n = 4). Previous studies of honey show substantial variation in monosaccharide content. Our analysis of *A. cerana japonica* honey found very little variation in glucose and fructose (which accounted for 97% of monosaccharides), despite substantial differences in surrounding forage composition. As expected, we observed temporal variation in pollen foraged by *A. cerana japonica*, likely dependent on flowering phenology. These preliminary results suggest that the forage and nutrition of *A. cerana japonica* may not be negatively affected by urban land use. This highlights the need for further comparative studies between *A. cerana japonica* and *A. mellifera* as it could suggest a resilience in pollinators foraging in their native range.

Keywords: Pollinator, landscape, land use, urban rural gradient, Japanese honeybee, honey, pollen, nutrition.

1. Introduction

Globally, land use change is driving biodiversity loss. Primarily driven by anthropogenic uses, such as agricultural intensification and urban development, these losses threaten ecosystem services, and impact the growing human population [1,2]. One such

ecosystem service is provided by insect pollinators. Pollinator declines are linked to a reduction in both nesting sites (for wild bees) and available forage (for all pollinators) [3]. Land use change has damaged the availability and variety of pollen [4,5]. This is particularly evident in specialist pollinators, which can only utilise certain suitable flora [6,7]. Consequently, this is particularly important for specialist pollinator species that are under selection pressure to make a transition to newly available sources of food [5,8].

In a landscape context, pollinator activity shifts depending on the pollinator species' forage preferences, and the nutritional value of the pollen [9–13]. Pollinator fitness may effectively be determined by land use change, in combination with other significant factors [14–16]. These effects have only recently begun to be incorporated into the conservation literature, where papers highlight the importance of landscape heterogeneity, trees, matrix effects, habitat loss and fragmentation on pollinator diversity and success [17–19].

Amongst all animal pollinators, bees in particular have been affected on a global scale by land use change [19–22]. Western Honeybees (WHB) (*Apis mellifera* L.) remain an important model species for studying insect pollinator dynamics globally [23,24]. In Japan, both *A. mellifera* (the western honeybee) and *Apis cerana japonica* (the Japanese honeybee; JHB) are managed for their pollination, honey production and cultural/heritage values. Tatsuno and Osawa [25] found that the native JHB pollinate more native species and more species overall, making them potentially one of the more important pollinators in the country. Despite this, WHB are dominant in the Japanese beekeeping industry [26].

WHBs were originally introduced to Japan as they have a higher honey production and lower escape rate than JHBs, but it has recently been identified that they are more susceptible to predation from various native hornets (*Vespa* species) [25,26]. This is particularly important, as a number of *Vespa* species have recently become invasive in a variety of countries in Europe and Asia (e.g. Italy, Korea), meaning they pose a threat to native bee species, including JHB [27–30].

Japanese beekeeping

There was a significant decline in the prevalence of native beekeeping in Japan until 2005, determined by an increasing reliance on imported honey (more than ten times greater than domestic supplies) [26]. This was not only due to a decline in beekeeping as a profession, but also a decline in nectar sources, especially orange trees [26]. This reduction in pollinators has reduced the pollination services provided to cultivated crops, thus negatively affecting yield and quality of produce [26].

This decline has now stabilised, due to increases in urban and small-scale beekeeping [31]. The Japanese Government amended the [Apiculture Promotion Act](#) in 2012, which required hobbyist beekeepers to report their number of hives. The most recent statistics available estimates 10,000 active beekeepers in Japan, growing from approximately 2,000 when the Apiculture Promotion Act was introduced in 1995 [32]. For context, the National Bee Unit in England estimates the number of beekeepers at 44,000, a number that has remained relatively stable over the past 5 years [33].

Local expert knowledge from beekeepers is key to understanding the behaviour and adaptations of their bees. Beekeepers in the Nagasaki prefecture have said that the WHB has adapted to forage more on “mass-flowering plants” than the JHB. Beekeepers and academics have observed that the JHB instead forages on more diverse flower sources, collecting nectar and pollen from anything available, rather than through the “flower constancy” behaviour observed in WHB [34,35]. The beekeepers believe that “if nectar is very scarce (like in urban area), *cerana* can more successfully find small patches on which to survive (maybe in a small garden)” [36]. Observations by this group comparing WHB and JHB when kept in the same apiary have led the beekeepers to believe that “*mellifera* is not good at collecting nectar in summer compared with *cerana*”, especially in urban environments with less spatially extensive flower patches [36].

Beekeeping is growing in Japan, as more people take it up as a hobby or a business interest. Investigating the threats to pollinators and their ecosystem services are equally

increasing in importance. Identifying land uses and plant species that support *A. cerana japonica* may be key in maintaining the success of both urban and rural commercial and hobbyist beekeepers, as their numbers continue to grow.

Aims and Scope

This study aims to investigate pollen and nectar foraging by *A. cerana japonica*, studying urban and rural populations maintained by hobbyists in Nagasaki and Saga prefectures, on Japan's southern island of Kyushu. Here, beekeeping is practiced by a small beekeeping community, largely producing honey part-time for personal use and sale, with a few full-time commercial producers. *A. cerana japonica* are almost exclusively chosen by hobbyist beekeepers in Nagasaki (though *A. mellifera* continue to be favoured by commercial beekeepers). The factors affecting pollinator health and honey production in Japan are not well studied, so this study focuses on answering the two following key questions:

1. How does land use in Japan affect the honey produced by *A. cerana japonica*?
2. How does the time of year and location affect the pollen collected and honey produced by *A. cerana japonica*?

2. Materials and Methods

Honey sampling

Honey was collected from 22 hives across Nagasaki and Saga (Figure 1) between June 2018 and August 2019. A questionnaire was given to the owner of each hive to determine information such as the species of bee, the location of their hive and the environment surrounding the hive ([Supplementary Materials 1: Questionnaire](#)).

Honey samples were analysed using high-performance liquid chromatography (HPLC) to determine sugar composition (fructose, glucose and maltose), following methods for honey analysis used in Ouchemoukh *et al.* [37]. These sugars were selected due to previously observed geographic variation in composition [38].

Crystallised honey samples were heated in a 90°C water bath until clear and left to cool to room temperature. All samples were then diluted using High Performance Liquid Chromatography (HPLC)-grade water to a ratio of 1µl honey per 100ml water. Two repeats of 10µl solution were run through the HPLC, testing for fructose, glucose and maltose levels. Three repeats per sample were conducted and the means taken.

Aliquots were analysed on an Agilent Analytical 1200LC HPLC machine (Agilent Systems, UK) using a Thermo Dionex CarboPac PA20 Analytical column, 3x150mm (ThermoFisher, UK). A Pulsed Amperometric Detection (PAD) detector was used, and samples were transported in HPLC grade water/200nM NaOH. Detection peaks were quantified against a dilution series of standards for fructose, glucose and maltose.

Pollen sampling

Pollen samples were collected at least once every three weeks for nine weeks from 13.6.2019 to 8.8.2019 at two urban (Hives 15, 16) and two rural hives (Hives 11, 19) in Nagasaki-ken. Pollen was sampled via pollen trapping, direct pollen basket collection and brood chamber sampling, as these methods have previously been used to sample pollen successfully [39,40]. Samples at all hives were collected from the brood chamber, as this was found to be the quickest and most effective method, as well as arguably the least disruptive. Typhoons during weeks four and seven limited sampling during these periods; one hive was abandoned by the colony in week eight (detailed information available in Table S1).

Biotyping of pollen grains was used to provide a descriptive measure of the diversity of foraged pollen in samples [41]. Pollen samples were purified via acetolysis using methods based on Jones [42]; each sample was imaged five times with a digital microscope. Pollen grains were then counted and identified into biotypes based on physical properties ([Supplementary materials 2: Pollen](#)), due to low sample site replication, no further analysis was performed on the pollen data.

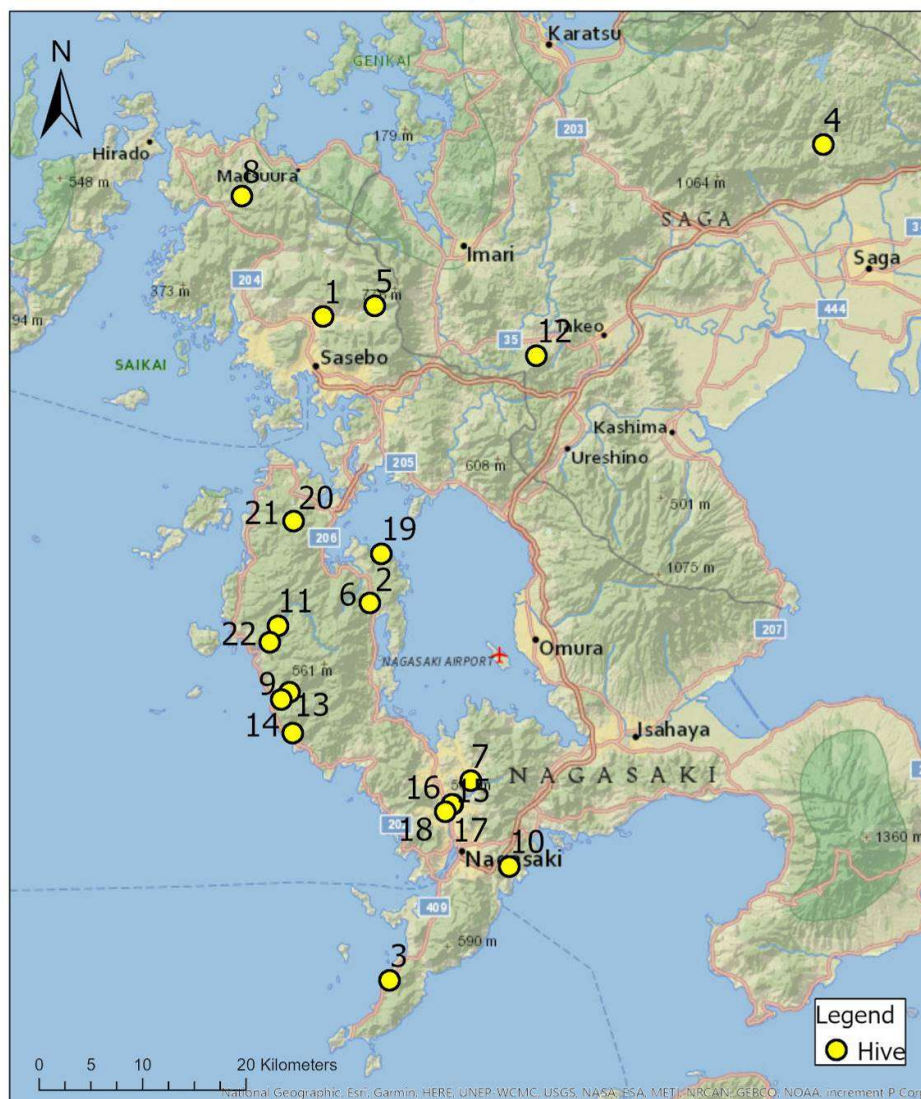


Figure 1. Locations of 22 hives from which honey samples were collected, clustered hive locations are also available in [Supplementary materials 2: Pollen](#).

Land use composition

To analyse the correlation between land cover and Japanese honeybee nutrition, data were sourced from the Japanese Ministry of the Environment's Biodiversity Centre (Table S2). The composition and configuration of different land uses in the surrounding 1, 3 and 5 km radii of each hive were measured using the *radius* tool in ArcGIS 10.8.1 (ESRI, US).

Radii of 1, 3 and 5 km were chosen as these cover the range of foraging distances travelled by bees from their hive [40]. Land cover classes that accounted for <0.5% of total cover within a buffer zone were excluded from analysis. The dominant land use (the land use contributing the greatest percentage of land cover) and the ratio of urban-to-rural land uses were then calculated using these data. The distance from each hive to the nearest urban area was also calculated based on methods established in Clermont et al. [43].

Statistical analysis

Honey composition data were analysed to determine inter-hive variance in sugar content. Monosaccharide composition of the honey samples was analysed by Pearson's correlation with three land use factors: distance to urban areas, dominant surrounding

land use and ratio of rural-to-urban land use. Critical P-scaling was performed to control false discovery rate (FDR) on these multiple land use analyses [44], for these analyses critical P was set at $\alpha = 0.0115$.

Pollen count data were not analysed due to low hive level replication. The number of observed biotypes (as a rough approximation of pollen species richness), and sample date and hive are presented in supplementary materials. All other analyses were all carried out in R statistical software version 4.0.5 [45].

3. Results

Honey sugar composition

Honey samples from 22 different hives across Japan, were analysed for fructose, glucose and maltose content. Glucose accounted for the majority of mono-saccharides within the honey samples, accounting for $59.3 \pm 0.4\%$ (mean \pm S.E.); followed by fructose at $38.1 \pm 0.5\%$, and maltose sugars being present in trace amounts at $2.5 \pm 0.2\%$. The sugar ratios of honey samples did not change significantly between hives and apiary location ($H = 21$, $p = 0.459$; Figure 2).

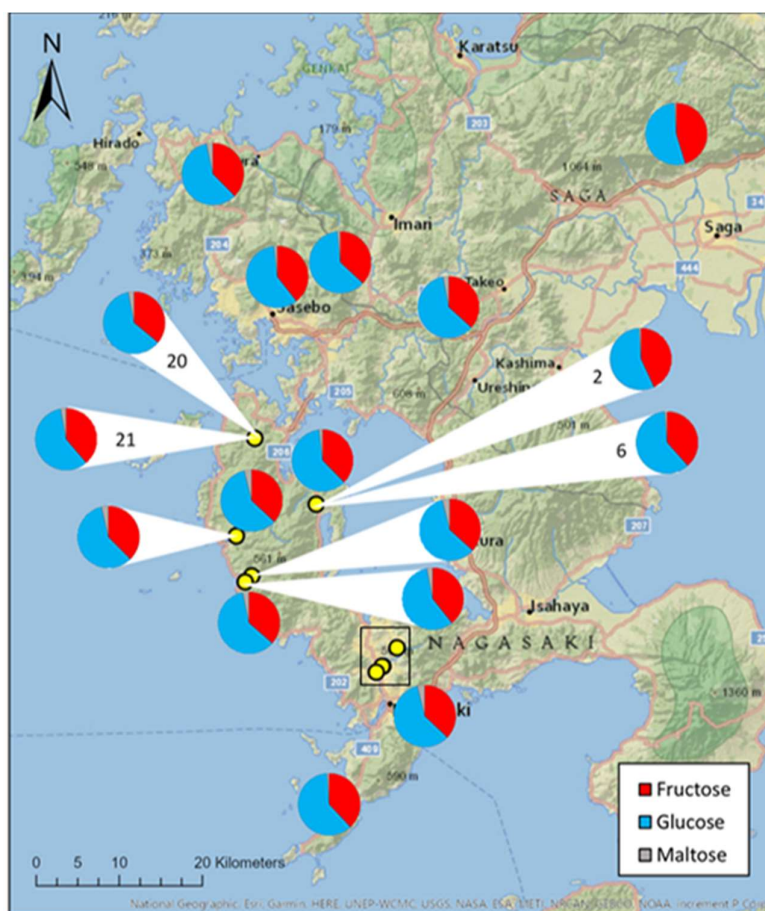


Figure 2. Proportion of fructose, maltose and glucose in honey samples collected from 22 *Apis* species hives across Kyushu, Japan. Yellow dots represent hives where pie chart could not be placed directly in the correct location. Where multiple hives had the same location, pie charts are labelled with hive number. Sugar proportions were calculated using HPLC. Clustered hives located in Nagasaki, within the black rectangle, can be found in Figure S1.

Although fructose and glucose content remained consistent between hives, significant inter-hive variance was observed in maltose content ($F = 0.465$, $df = 21$, $p = 0.029$). The distance to the nearest urban area had no effect on the proportions of sugars in honey

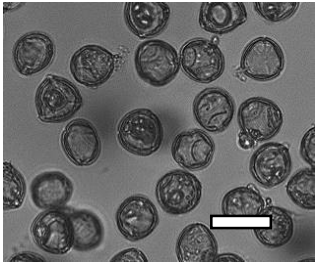
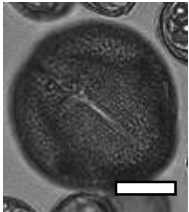
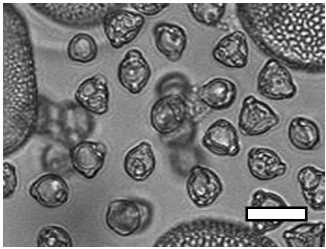
samples (*fructose*: $r_s = -0.099$, $n = 22$, $p = 0.660$; *glucose*: $r_s = -0.284$, $n = 22$, $p = 0.200$; *maltose*: $r_s = -0.055$, $n = 22$, $p = 0.807$).

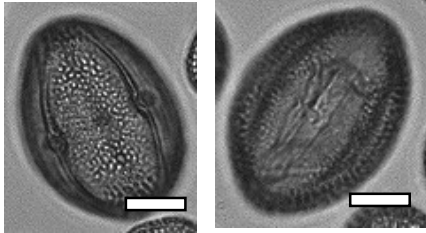
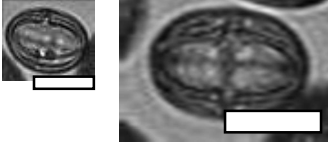
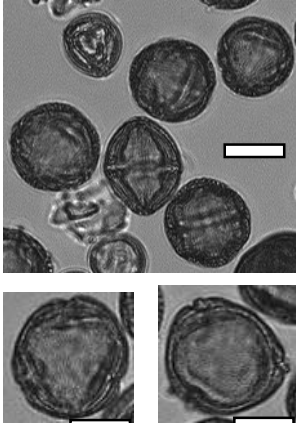
The proportions of sugars found in the honey samples did not change depending on the date the sample was collected (*fructose*: $H = 19.791$, $n = 22$, $p = 0.285$; *glucose*: $H = 20.146$, $n = 22$, $p = 0.267$; *maltose*: $H = 19.708$, $n = 22$, $p = 0.289$).

Pollen biotype composition

In the process of biotyping, 262 microscope images were counted across 131 samples from four *A. cerana japonica* hives collected between June and September 2019. Across these samples, 50 biotypes were identified (Supplementary materials: Appendix 1). Biotypes 1, 3, 10, 14, 17 and 20 had a total abundance greater than 1000 grains across all sample images, and thus were deemed 'dominant' biotypes. A description of these biotypes can be found in Table 1. Statistical analyses of pollen biotypes use these groups throughout, as well as 'others' (combined totals from biotypes 2, 4-9, 11-13, 15, 16, 18, 19 and 20-52).

Table 1. Dominant biotype classifications and descriptions used to identify pollen grains found in samples collected from five *Apis cerana japonica* hives in Japan, between June and September 2019. Potential family and species names are also given where possible, based on pollen samples collected directly from flowering plants and a palynomorph guide of Japanese flora by Shimakura [46]. Reference images are approximately relatively sized, as indicated by scale bar (50 μ m).

Biotype	Possible species and family name(s)	Description	Reference Image
1	<i>Aralia elata</i> (Araliaceae)	Small, circular/semi-circular	
3	<i>Firmiana simplex</i> (Malvaceae)	Medium, dark, 3-way symmetry, rounded	
10		Very small, light, circular/semi-circular.	

14		Medium, oblong, slightly pointed at ends, arcing lines through	
17	<i>Lithocarpus edulis</i> (Fagaceae)	Small, oval, lines arcing through.	
20	<i>Mallotus japonicus</i> (Euphorbiaceae) <i>Citrus/Fortunella crassifolia</i> (Rutaceae) <i>Dendropanax trifidus</i> (Araliaceae) <i>Euonymus japonicus</i> (Celastraceae)	Similar to 16, but more indents, elongated. From end on: small-medium, three rounded sides, triangle inside, with points between indents.	

Based on acetolysis, the most common species of pollen found within the study area were provisionally identified as Japanese angelica tree (*Aralia elata*), wutong (*Firmiana simplex*), Japanese Oak (*Lithocarpus edulis*), East Asian mallotus (*Mallotus japonicus*), kumquat (*Citrus/Fortunella crassifolia*), Tree Ivy (*Dendropanax trifidus*) and Japanese spindle (*Euonymus japonicus*).

Land use composition

Within a 1 km radius of the 22 hives, eight land types were dominant (Table S3). Within a 3 km radius, this was six land types, and in a 5 km radius, this was five land types. On average, within a 1 km radius around each hive, rural land use was dominant, covering an average of $80.0 \pm 6.7\%$ of all land. This land cover varied between hives (Figure 3, S2), but this variation was not reflected in fructose or glucose content of honey. The maltose content of honey increased as rural land cover within 1km radius of the hive increased, but not significantly under P-scaling to control FDR (Table 2).

Table 2. Statistical analysis of the effect of rural-to-urban ratio of land use on composition of sugars found in honey collected by 22 colonies of JHB in various locations within Kyushu, Japan, between June 2018 and August 2019. Statistical values for rural-to-urban ratios within radii of 1, 3 and 5 km were calculated. N for all statistics was 22. All maltose values were calculated using Pearson's product-moment correlation (r) and all fructose and glucose values were calculated using Spearman's rank correlation (r_s).

Sugar	1 km		3 km		5 km	
	<i>r</i> / <i>s</i> / <i>r</i> value	<i>P</i> -value	<i>r</i> / <i>s</i> / <i>r</i> value	<i>P</i> -value	<i>r</i> / <i>s</i> / <i>r</i> value	<i>P</i> -value
Fructose	-0.230	0.303	0.079	0.726	0.174	0.439
Glucose	-0.095	0.675	-0.051	0.822	-0.297	0.179
Maltose	0.465	0.029	0.189	0.399	0.043	0.848

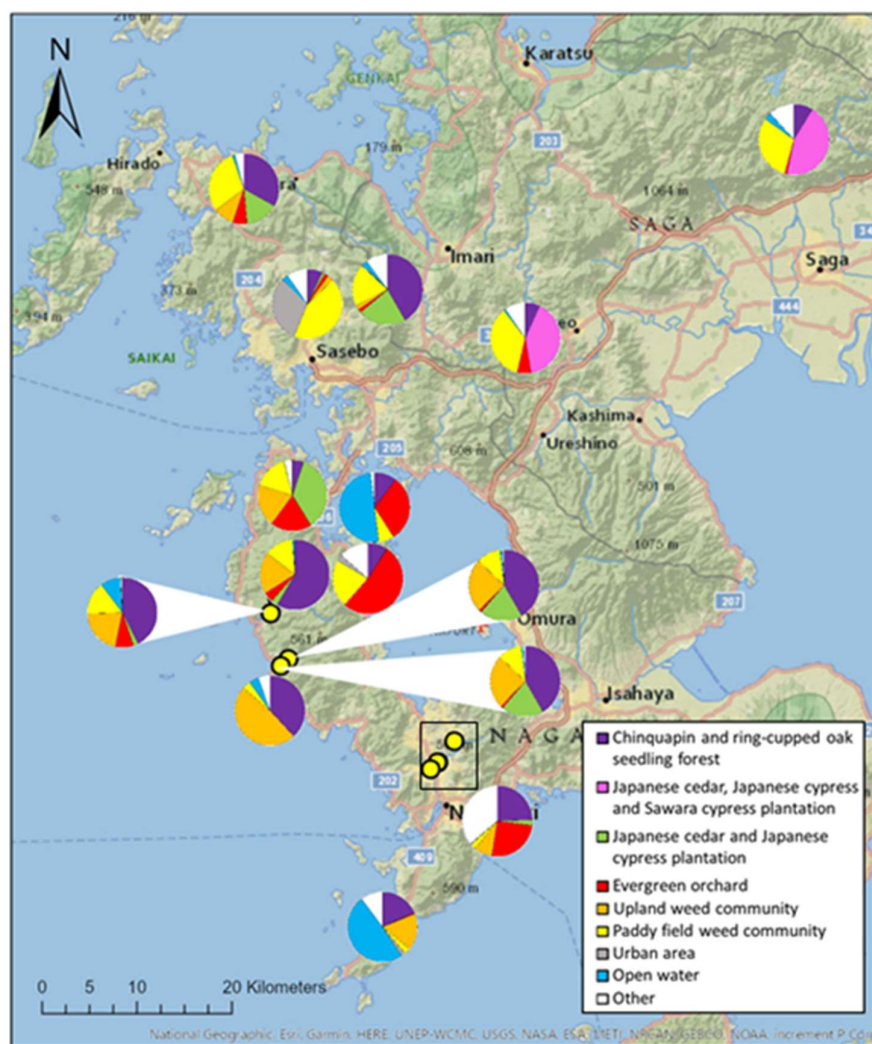


Figure 3. Proportion of land uses in a 1 km radius surrounding 17 hives across Kyushu, Japan. Land uses which were dominant for at least one hive are shown, along with all other land types, grouped into 'other'. Yellow dots represent hives where pie chart could not be placed directly in the correct location. Hives 2 and 6 as well as 20 and 21 were located in the same apiaries, so are shown using one pie chart per location. Clustered hives in Nagasaki, within the black rectangle,

can be found in Figure 15. Land use was calculated using vegetation maps freely available from the Japanese Ministry of the Environment's [Biodiversity Centre](#).

4. Discussion

In this study, fructose and glucose sugars made up the majority (an average of $97.5 \pm 0.9\%$) of the three monosaccharide sugars analysed from the honey of the JHB. Our study was based on sugar analysis from a diverse number of sites ($n = 22$) and pollen collections from a small number of sites ($n = 4$), but with a high level of depth ($n = 13$ per hive). Our results show minimal variance in the sugar composition across a wide geographical area, and a broad diversity of pollen types associated with these bees.

Despite the small replication size of pollen trapping, the sampling regime we attempted was able to show temporal variation in pollen forage composition. Flowering date is a significant factor impacting pollinator foraging [9,47,48], and our study was no exception. As a result, it is important to focus on ensuring a consistent provision of pollen sources throughout the year, by maintaining heterogeneity of flowering times within vegetation cover [12,41].

The importance of honey sugar composition

The sugar composition of honey is directly linked to the flowers that have been foraged by bees to make it. Phytochemicals derived from the flowers convey unique biochemical properties to honey, which has led to marketization of particular honeys for their medicinal properties (such as "Manuka") [49–51]. The glucose/fructose ratio of honey can impact its palatability for humans [52,53], and higher glucose levels contribute to the production of hydrogen peroxide, an important antimicrobial compound found in honey [54,55].

The biochemical properties (i.e. antibacterial activity) of honey varies according to its sources, as do its physical and chemical properties [50,51,56]. These properties are as important to humans for their medical properties as they are to the honeybees for their potential to act as a "bee pharmacy" [57,58]. The idea of an environmental pharmacy that bees can exploit is being examined by researchers at [Cardiff University](#).

Consequently, variance in honey sugar composition and botanical origin has the potential to substantially impact bee health. Yet, in our study, we observe both minimal variance in sugar content, and no significant correlation with surrounding land use composition. Measures of land use composition, for example rural-to-urban ratio or distance to urban landscapes, did not significantly impact sugar composition. Previous research in the WHB from western urban-rural gradient landscapes has shown that increasing urban land use has a negative impact on the nutrition of these eusocial bees [9–13]. Our study site compared areas across a rural-urban gradient, and found no link between nutrition of the JHB and the composition of their environment, this suggests that JHBs in Japan may not be perturbed by the negative effects of urbanisation observed in other studies of honeybees. The question remains, as to why: is it land use being less detrimental, or are JHB being more resilient to land use change?

We must also note that, in contrast to the other sugars, maltose levels appeared to vary substantially more between hives. Maltose is often added to man-made products, as it is not commonly naturally occurring [59]. However, studies have shown that the sugar composition of honey changes over time, due to various chemical processes enabled by the heat of hives [52,60]. This can lead to the production of maltose from glucose and fructose, meaning that the maltose may have formed during storage [60].

Could urban land use be less detrimental?

As observed by beekeepers involved in our study, when comparing WHB with JHB, the latter may prefer to forage on a wider array of available forage [36]. The low variance in monosaccharide composition in our study of JHB, compared with the significant inter-

hive variance in sugar composition from studies of WHB [38], suggests JHB may be better at regulating the balance of sugars in their nectar forage intake.

Immediately, one could suggest this is due to differences in the landscape composition impacting the bees. Within the context of our study (Nagasaki and Saga), the rural-urban matrix of landscapes was significantly variable between sites (Figure 4). Our findings may show that JHB may be successfully exploiting the diverse nectar sources available to them in these environments. This may suggest that Japanese urban landscapes are not as detrimental to JHB as western urban environments are to WHB, as found in existing studies that have explored the impact of urban environments on pollen forage and pollinator health [43,61,62]. Few studies have explicitly studied the link between landscape “quality” and nectar foraging as has been attempted in our study. Homogenous landscapes (i.e. agricultural monocultures) have previously been shown to negatively impact the nectar foraging of WHBs [63]. The effect of urban environments on nectar foraging remains largely unexplored for WHBs however. Furthermore, there is a growing literature on urban green infrastructure that suggests cultural and demographic factors influence the distribution and composition of urban green spaces [64,65].

Elsewhere in the world, where urban land uses dominate, the managed floral composition and overall lack of availability of nectar has been shown to have detrimental effects on honeybee nutrition [43,62]. Previous studies directly comparing the effects of land use composition on honeybee nutrition found significant effects with similar sampling effort [9,40,66–68]. The lack of impact from landscape composition on nutrition of the JHB here suggests urban flora may not be perturbing foraging by JHB. Cultural, historic and heritage factors that impact the composition of natural elements in urban settings may explain these differences. If urban green spaces are providing a stable and sufficient nectar source for JHB [64,69], prefectures like Nagasaki and Saga may become important case studies in urban landscapes that support local bee populations.

The social construct of what constitutes “urban” in Japan is observably distinct to other sites in which pollinator ecology has been researched, in terms of extent and age of urban green spaces, the social expectation for preserving and cultivating these spaces, as well as social engagement with natural history. [64,70–72]. In previous studies, urban environments are often dominated by invasive or alien species, supplanting native flora [73,74]. Cultural factors leading to an emphasis on native flora [64,71], as well as strict plant quarantine and biosecurity measures [75], may have contributed to urban environments in Japan being more “native” than western urbanised landscapes. Emergent analyses of urban green infrastructure suggest remote sensing data may bear out this comparison [64,65,76], but a direct comparative analysis with sufficiently controlled parameters is currently lacking in the literature.

Could Japanese Honeybees be more resilient?

The other driver of our observed minimal disturbance of JHB within urban environments and agricultural rural environments is that JHB itself may be better adapted to these environments. Due to the lack of significant correlation with land use composition on honeybee nutrition, we suggest that in Nagasaki and Saga, JHB may in fact be “coping” with the presence and expansion of urbanisation. Previous studies by Garbuzov *et al.* [69] and Lowenstein *et al.* [8] suggest that pollinators can adapt successfully to urban living. However, notably, due to a lack of direct comparison with WHB or experiments relocating JHB to a non-localised environment, determining this link remains speculative.

When comparing the biology of WHB with JHB, studies of the “waggle dance” properties suggest that the flight capacity of WHB may be up to two times larger than JHB [35,77]. The suggestion, that different species of honeybee might possess distinct ‘dialects’ of the waggle dance, remains controversial. Direct comparisons of waggle dance properties between these two species suggest that their “dialects” (i.e. the forage distance-to-

dance duration) scale differently [25,78]. Foraging over larger distances is typically advantageous to generalist foragers like the WHB, though it suggests that JHB may be better adapted to smaller areas with forage sources that are more difficult to locate [78].

Denser, more homogeneous and/or larger urban areas may have a significant effect on JHB [47]. The area studied in this paper did not have many high population density (Nagasaki: 335 people/km², Saga: 342 people/km²) or large urban areas, so this may be a relevant factor to incorporate in future studies. However, based on the results of this study alone, we found that the proximity of hives to urban areas is not an issue for regulation of honey composition, which means that the JHB may be resilient in increasingly urbanised areas. This contradicts research on WHB, which has highlighted the threats of urban and agricultural expansion. Here we may be observing a difference between WHB and JHB, a resilience to land use variance in JHB not found in other honeybee species [12,62]. One key factor when considering local environmental impacts on pollinators is activity outside of their native range. Whereas WHB has a cosmopolitan distribution, well outside of its native range [79], JHB is almost exclusively present within its native range in Japan. Any apparent resilience of this latter species may be linked with this, highlighting it as an important factor in future studies of pollinator resilience relative to its range/distribution.

4. Conclusions

Our study found that the sugar composition of honeys collected by JHB does not vary significantly between hives across a wide geographical area. Furthermore, no significant correlation was found with land use composition surrounding each hive. Our understanding of the importance of sugar composition for hive health, the impact of botanical origins on sugar composition, and local knowledge on the foraging behaviour of JHB leads us to conclude that this particular bee species may be sufficiently able to adapt to local land use conditions. By this, we mean the JHB honey forage is not negatively affected by land use, as has been seen in studies of the WHB [63].

Comparing JHB to WHB would potentially identify factors allowing the JHB to successfully exploit both urban and rural environments in Japan, when the WHB tends to be less successful across the planet. It would also be beneficial to identify local plant species abundances relative to the pollen spectrum foraged by the JHB, to maximise benefits of any vegetation conservation efforts.

To discover more of the effects of various external factors on honey composition, more complex compositional analyses, including other sugars such as melezitose and sucrose, as well as other components such as pollen grains could be relevant [37,80,81].

Author Contributions: All authors contributed to conceiving and writing the manuscript.

Funding: PD is supported by a joint ESRC-EPSRC Impact Acceleration Account grant. Fieldwork by LC was supported by the Japan Student Services Organisation (JASSO) exchange programme between Lancaster University and Nagasaki University. TO acknowledges departmental support from Nagasaki University.

Institutional Review Board Statement: Not applicable.

Data Availability Statement: All data generated or analysed during this study are included in this published article and its supplementary information files.

Acknowledgments: Confidential until after peer review.

Conflicts of Interest: The authors declare no conflict of interest.

References

1. Sponsler, D.B.; Grozinger, C.M.; Hitaj, C.; Rundlöf, M.; Botías, C.; Code, A.; Lonsdorf, E. V.; Melathopoulos, A.P.; Smith, D.J.; Suryanarayanan, S.; et al. Pesticides and pollinators: A socioecological synthesis. *Sci. Total Environ.* 2019.
2. Aznar-Sánchez, J.A.; Piquer-Rodríguez, M.; Velasco-Muñoz, J.F.; Manzano-Agugliaro, F. Worldwide research trends on

- sustainable land use in agriculture. *Land use policy* **2019**, doi:10.1016/j.landusepol.2019.104069.
3. Vanbergen, A.J.; Garratt, M.P.; Vanbergen, A.J.; Baude, M.; Biesmeijer, J.C.; Britton, N.F.; Brown, M.J.F.; Brown, M.; Bryden, J.; Budge, G.E.; et al. Threats to an ecosystem service: Pressures on pollinators. *Front. Ecol. Environ.* **2013**.
 4. Hadley, A.S.; Betts, M.G. The effects of landscape fragmentation on pollination dynamics: Absence of evidence not evidence of absence. *Biol. Rev.* **2012**.
 5. Betts, M.G.; Hadley, A.S.; Kormann, U. The landscape ecology of pollination. *Landsc. Ecol.* **2019**.
 6. Menz, M.H.M.; Phillips, R.D.; Winfree, R.; Kremen, C.; Aizen, M.A.; Johnson, S.D.; Dixon, K.W. Reconnecting plants and pollinators: Challenges in the restoration of pollination mutualisms. *Trends Plant Sci.* **2011**.
 7. Hopwood, J.; Black, S.H.; Lee-Mäder, E.; Charlap, A.; Preston, R.; Mozumder, K.; Fleury, S. Literature Review: Pollinator Habitat Enhancement and Best Management Practices in Highway Rights-of-way. *Fed. Highw. Adm.* **2015**.
 8. Lowenstein, D.M.; Matteson, K.C.; Minor, E.S. Diversity of wild bees supports pollination services in an urbanized landscape. *Oecologia* **2015**, doi:10.1007/s00442-015-3389-0.
 9. Donkersley, P.; Rhodes, G.; Pickup, R.W.; Jones, K.C.; Power, E.F.; Wright, G.A.; Wilson, K. Nutritional composition of honey bee food stores vary with floral composition. *Oecologia* **2017**, 1–13.
 10. Sponsler, D.B.; Matcham, E.G.; Lin, C.H.; Lanterman, J.L.; Johnson, R.M. Spatial and taxonomic patterns of honey bee foraging: A choice test between urban and agricultural landscapes. *J. Urban Ecol.* **2017**, doi:10.1093/jue/juw008.
 11. Ruedenauer, F.A.; Raubenheimer, D.; Kessner-Beierlein, D.; Grund-Mueller, N.; Noack, L.; Spaethe, J.; Leonhardt, S.D. Best be(e) on low fat: linking nutrient perception, regulation and fitness. *Ecol. Lett.* **2020**.
 12. Danner, N.; Molitor, A.M.; Schiele, S.; Härtel, S.; Steffan-Dewenter, I. Season and landscape composition affect pollen foraging distances and habitat use of Honey bees. *Ecol. Appl.* **2016**, doi:10.1890/15-1840.1.
 13. Osborne, J.L.; Smith, A.; Clark, S.J.; Reynolds, D.R.; Barron, M.C.; Lim, K.S.; Reynolds, A.M. The Ontogeny of Bumblebee Flight Trajectories: From Naïve Explorers to Experienced Foragers. *PLoS One* **2013**, *8*, e78681, doi:10.1371/journal.pone.0078681.
 14. Donkersley, P.; Elsner-Adams, E.; Maderson, S. A one-health model for reversing honeybee (*Apis mellifera* L.) decline. *Vet. Sci.* **2020**, *7*, doi:10.3390/vetsci7030119.
 15. Rader, R.; Bartomeus, I.; Garibaldi, L.A.; Garratt, M.P.D.; Howlett, B.G.; Winfree, R.; Cunningham, S.A.; Mayfield, M.M.; Arthur, A.D.; Andersson, G.K.S.; et al. Non-bee insects are important contributors to global crop pollination. *Proc. Natl. Acad. Sci. U. S. A.* **2016**, doi:10.1073/pnas.1517092112.
 16. Becher, M.A.; Osborne, J.L.; Thorbek, P.; Kennedy, P.J.; Grimm, V. Towards a systems approach for understanding honeybee decline: A stocktaking and synthesis of existing models. *J. Appl. Ecol.* **2013**, *50*, 868–880.
 17. Donkersley, P. Trees for bees. *Agric. Ecosyst. Environ.* **2019**, doi:10.1016/j.agee.2018.10.024.
 18. Senapathi, D.; Goddard, M.A.; Kunin, W.E.; Baldock, K.C.R. Landscape impacts on pollinator communities in temperate systems: evidence and knowledge gaps. *Funct. Ecol.* **2017**.
 19. Powney, G.D.; Carvell, C.; Edwards, M.; Morris, R.K.A.; Roy, H.E.; Woodcock, B.A.; Isaac, N.J.B. Widespread losses of pollinating insects in Britain. *Nat. Commun.* **2019**, doi:10.1038/s41467-019-08974-9.
 20. Ollerton, J. Pollinator Diversity: Distribution, Ecological Function, and Conservation. *Annu. Rev. Ecol. Evol. Syst.* **2017**, doi:10.1146/annurev-ecolsys-110316-022919.
 21. Eggleton, P. The State of the World's Insects. *Annu. Rev. Environ. Resour.* **2020**, doi:10.1146/annurev-environ-012420-050035.
 22. Hanley, N.; Breeze, T.D.; Ellis, C.; Goulson, D. Measuring the economic value of pollination services: Principles, evidence and knowledge gaps. *Ecosyst. Serv.* **2015**, doi:10.1016/j.ecoser.2014.09.013.
 23. Wood, T.J.; Michez, D.; Paxton, R.J.; Drossart, M.; Neumann, P.; Gérard, M.; Vanderplanck, M.; Barraud, A.; Martinet, B.; Leclercq, N.; et al. Managed honey bees as a radar for wild bee decline? *Apidologie* **2020**.
 24. López-Urbe, M.M.; Ricigliano, V.A.; Simone-Finstrom, M. Defining Pollinator Health: Assessing Bee Ecological, Genetic,

- and Physiological Factors at the Individual, Colony, and Population Levels. *Annu. Rev. Anim. Biosci.* **2020**.
25. Tatsuno, M.; Osawa, N. Flower visitation patterns of the coexisting honey bees *Apis cerana japonica* and *Apis mellifera* (Hymenoptera: Apidae). *Entomol. Sci.* **2016**, doi:10.1111/ens.12206.
 26. Kohsaka, R.; Park, M.S.; Uchiyama, Y. Beekeeping and honey production in Japan and South Korea: past and present. *J. Ethn. Foods* **2017**, doi:10.1016/j.jef.2017.05.002.
 27. Choi, M.B.; Martin, S.J.; Lee, J.W. Distribution, spread, and impact of the invasive hornet *Vespa velutina* in South Korea. *J. Asia. Pac. Entomol.* **2012**, doi:10.1016/j.aspen.2011.11.004.
 28. Monceau, K.; Bonnard, O.; Thiéry, D. *Vespa velutina*: A new invasive predator of honeybees in Europe. *J. Pest Sci.* (2004). 2014.
 29. Bertolino, S.; Liroy, S.; Laurino, D.; Manino, A.; Porporato, M. Spread of the invasive yellow-legged hornet *Vespa velutina* (Hymenoptera: Vespidae) in Italy. *Appl. Entomol. Zool.* **2016**, doi:10.1007/s13355-016-0435-2.
 30. Leza, M.; Miranda, M.Á.; Colomar, V. First detection of *Vespa velutina nigrithorax* (Hymenoptera: Vespidae) in the balearic islands (Western Mediterranean): A challenging study case. *Biol. Invasions* **2018**, doi:10.1007/s10530-017-1658-z.
 31. Mitsumori, Y. An Analysis of Impact of Urban Beekeeping Projects on Community: Ginza Bee Projects brought not only bees, but also a more sophisticated image to Ginza. In Proceedings of the IEEE Region 10 Humanitarian Technology Conference, R10-HTC; 2020.
 32. Ministry of Agriculture Forestry Fisheries *Situation of beekeeping*; 2020;
 33. National Bee Unit *The Hive Count*; York, 2021;
 34. Wells, H.; Wells, P.H. Optimal Diet, Minimal Uncertainty and Individual Constancy in the Foraging of Honey Bees, *Apis mellifera*. *J. Anim. Ecol.* **1986**, doi:10.2307/4422.
 35. Yoshida, T. *Nihonmitsubachi no shiikuho to seitai (Keeping method and ecology of Japanese honey bee)*; Tamagawa University Press: Tokyo, 2000;
 36. Nagasaki University Community Beekeepers Pers. Comm. 2021.
 37. Ouchemoukh, S.; Schweitzer, P.; Bachir Bey, M.; Djoudad-Kadji, H.; Louaileche, H. HPLC sugar profiles of Algerian honeys. *Food Chem.* **2010**, doi:10.1016/j.foodchem.2009.12.047.
 38. Wang, J.; Kliks, M.M.; Jun, S.; Jackson, M.; Li, Q.X. Rapid Analysis of Glucose, Fructose, Sucrose, and Maltose in Honeys from Different Geographic Regions using Fourier Transform Infrared Spectroscopy and Multivariate Analysis. *J. Food Sci.* **2010**, doi:10.1111/j.1750-3841.2009.01504.x.
 39. Giesecke, T.; Fontana, S.L.; van der Knaap, W.O.; Pardoe, H.S.; Pidek, I.A. From early pollen trapping experiments to the Pollen Monitoring Programme. *Veg. Hist. Archaeobot.* **2010**, doi:10.1007/s00334-010-0261-3.
 40. Donkersley, P.; Rhodes, G.; Pickup, R.W.; Jones, K.C.; Wilson, K. Honeybee nutrition is linked to landscape composition. *Ecol. Evol.* **2014**, *4*, 4195–4206, doi:10.1002/ece3.1293.
 41. Lau, P.; Bryant, V.; Ellis, J.D.; Huang, Z.Y.; Sullivan, J.; Schmehl, D.R.; Cabrera, A.R.; Rangel, J. Seasonal variation of pollen collected by honey bees (*Apis mellifera*) in developed areas across four regions in the United States. *PLoS One* **2019**, doi:10.1371/journal.pone.0217294.
 42. Jones, G.D. Ollen analyses for pollination research , acetolysis. *J. Pollinat. Ecol.* **2014**.
 43. Clermont, A.; Eickermann, M.; Kraus, F.; Hoffmann, L.; Beyer, M. Correlations between land covers and honey bee colony losses in a country with industrialized and rural regions. *Sci. Total Environ.* **2015**, doi:10.1016/j.scitotenv.2015.05.128.
 44. Benjamini, Y.; Yekutieli, D. The control of the false discovery rate in multiple testing under dependency. *Ann. Stat.* **2001**, doi:10.1214/aos/1013699998.
 45. R Development Core Team R: A Language and Environment for Statistical Computing. *R Found. Stat. Comput.* **2020**, 4.0.5.
 46. Shimakura, M. *Palynomorphs of Japanese plants*; Spec Publ Osaka Mus Nat Hist, 1973;
 47. Steffan-Dewenter, I.; Kuhn, A. Honeybee foraging in differentially structured landscapes. *Proc. R. Soc. B Biol. Sci.* **2003**, *270*,

- 569–575, doi:10.1098/rspb.2002.2292.
48. Nottebrock, H.; Schmid, B.; Mayer, K.; Devaux, C.; Esler, K.J.; Böhning-Gaese, K.; Schleuning, M.; Pagel, J.; Schurr, F.M. Sugar landscapes and pollinator-mediated interactions in plant communities. *Ecography (Cop.)*. **2017**, *40*, 1129–1138, doi:10.1111/ecog.02441.
 49. Adams, C.J.; Boulton, C.H.; Deadman, B.J.; Farr, J.M.; Grainger, M.N.C.; Manley-Harris, M.; Snow, M.J. Isolation by HPLC and characterisation of the bioactive fraction of New Zealand manuka (*Leptospermum scoparium*) honey. *Carbohydr. Res.* **2008**, doi:10.1016/j.carres.2007.12.011.
 50. Combarros-Fuertes, P.; Estevinho, L.M.; Teixeira-Santos, R.; Rodrigues, A.G.; Pina-Vaz, C.; Fresno, J.M.; Eugenia Tornadijo, M. Antibacterial action mechanisms of honey: Physiological Effects of Avocado, Chestnut, and Polyfloral Honey upon *Staphylococcus aureus* and *Escherichia coli*. *Molecules* **2020**, doi:10.3390/molecules25051252.
 51. Bucekova, M.; Jardekova, L.; Juricova, V.; Bugarova, V.; Di Marco, G.; Gismondi, A.; Leonardi, D.; Farkasovska, J.; Godocikova, J.; Laho, M.; et al. Antibacterial activity of different blossom honeys: New findings. *Molecules* **2019**, doi:10.3390/molecules24081573.
 52. Escuredo, O.; Carmen Seijo, M. Honey: Chemical composition, stability and authenticity. *Foods* **2019**.
 53. Anupama, D.; Bhat, K.K.; Sapna, V.K. Sensory and physico-chemical properties of commercial samples of honey. *Food Res. Int.* **2003**, doi:10.1016/S0963-9969(02)00135-7.
 54. White, J.W.; Subers, M.H.; Schepartz, A.I. The identification of inhibine, the antibacterial factor in honey, as hydrogen peroxide and its origin in a honey glucose-oxidase system. *BBA - Biochim. Biophys. Acta* **1963**, doi:10.1016/0006-3002(63)90359-7.
 55. Brudzynski, K. A current perspective on hydrogen peroxide production in honey. A review. *Food Chem.* **2020**.
 56. Nzeako, B.C.; Hamdi, J. Antimicrobial potential of honey on some microbial isolates. *Sultan Qaboos Univ. Med. J.* **2000**.
 57. Erler, S. Pharmacy bee hive — use of natural drugs to increase pollinator health.; **2016**.
 58. Tauber, J.P.; Collins, W.R.; Schwarz, R.S.; Chen, Y.; Grubbs, K.; Huang, Q.; Lopez, D.; Peterson, R.; Evans, J.D. Natural product medicines for honey bees: Perspective and protocols. *Insects* **2019**.
 59. Fujita, I. Determination of Maltose in Honey. *Int. J. Food Sci. Nutr. Diet.* **2012**, doi:10.19070/2326-3350-120001.
 60. Ball, D.W. The chemical composition of honey. *J. Chem. Educ.* **2007**, doi:10.1021/ed084p1643.
 61. Pornpimon, T.; Natapot, W.; A., G.G. Effects of landscape cover and local habitat characteristics on visiting bees in tropical orchards. *Agric. For. Entomol.* **2017**, *20*, 28–40, doi:10.1111/afe.12226.
 62. Harrison, T.; Gibbs, J.; Winfree, R. Anthropogenic landscapes support fewer rare bee species. *Landsc. Ecol.* **2019**, doi:10.1007/s10980-017-0592-x.
 63. Nürnberger, F.; Steffan-Dewenter, I.; Härtel, S. Combined effects of waggle dance communication and landscape heterogeneity on nectar and pollen uptake in honey bee colonies. *PeerJ* **2017**, doi:10.7717/peerj.3441.
 64. Rupprecht, C.D.D. Informal urban green space: Residents' perception, use, and management preferences across four major Japanese shrinking cities. *Land* **2017**, doi:10.3390/land6030059.
 65. O'Neil, J.A.; Gallagher, C.E. Determining What is Important in Terms of the Quality of an Urban Green Network: A Study of Urban Planning in England and Scotland. *Plan. Pract. Res.* **2014**, doi:10.1080/02697459.2014.896154.
 66. Sutter, L.; Jeanneret, P.; Bartual, A.M.; Bocci, G.; Albrecht, M. Enhancing plant diversity in agricultural landscapes promotes both rare bees and dominant crop-pollinating bees through complementary increase in key floral resources. *J. Appl. Ecol.* **2017**, doi:10.1111/1365-2664.12907.
 67. Hall, M.A.; Nimmo, D.G.; Cunningham, S.A.; Walker, K.; Bennett, A.F. The response of wild bees to tree cover and rural land use is mediated by species' traits. *Biol. Conserv.* **2019**, doi:10.1016/j.biocon.2018.12.032.
 68. Balfour, N.J.; Ollerton, J.; Castellanos, M.C.; Ratnieks, F.L.W. British phenological records indicate high diversity and extinction rates among late-summer-flying pollinators. *Biol. Conserv.* **2018**, doi:10.1016/j.biocon.2018.04.028.

69. Garbuzov, M.; Schürch, R.; Ratnieks, F.L.W. Eating locally: dance decoding demonstrates that urban honey bees in Brighton, UK, forage mainly in the surrounding urban area. *Urban Ecosyst.* **2015**, doi:10.1007/s11252-014-0403-y.
70. Rupperecht, C.D.D.; Byrne, J.A.; Ueda, H.; Lo, A.Y. "It's real, not fake like a park": Residents' perception and use of informal urban green-space in Brisbane, Australia and Sapporo, Japan. *Landsc. Urban Plan.* **2015**, doi:10.1016/j.landurbplan.2015.07.003.
71. Todorova, A.; Asakawa, S.; Aikoh, T. Preferences for and attitudes towards street flowers and trees in Sapporo, Japan. *Landsc. Urban Plan.* **2004**, doi:10.1016/j.landurbplan.2003.11.001.
72. Petrova, E.G.; Mironov, Y. V.; Aoki, Y.; Matsushima, H.; Ebine, S.; Furuya, K.; Petrova, A.; Takayama, N.; Ueda, H. Comparing the visual perception and aesthetic evaluation of natural landscapes in Russia and Japan: cultural and environmental factors. *Prog. Earth Planet. Sci.* **2015**, doi:10.1186/s40645-015-0033-x.
73. Penick, C.A.; Crofton, C.A.; Appler, R.H.; Frank, S.D.; Dunn, R.R.; Tarpy, D.R. The contribution of human foods to honey bee diets in a mid-sized metropolis. *J. Urban Ecol.* **2016**, doi:10.1093/jue/juw001.
74. Piroux, M.; Lambert, O.; Puyo, S.; Farrera, I.; Thorin, C.; L'Hostis, M.; Vignes, B.; Bastian, S. Correlating the pollens gathered by APIS Mellifera with the landscape features in Western France. *Appl. Ecol. Environ. Res.* **2014**, doi:10.15666/aeer/1202_423439.
75. Jiao, Y.; Ding, Y.; Zha, Z.; Okuro, T. Crises of biodiversity and ecosystem services in Satoyama landscape of Japan: A review on the role of management. *Sustain.* **2019**.
76. Haaland, C.; van den Bosch, C.K. Challenges and strategies for urban green-space planning in cities undergoing densification: A review. *Urban For. Urban Green.* **2015**.
77. Yoshida, T.; Saito, J.; Kajigaya, N. The mating flight times of native *Apis cerana japonica* Radoszkowski and introduced *Apis mellifera* L. in sympatric conditions. *Apidologie* **1994**, doi:10.1051/apido:19940401.
78. Su, S.; Cai, F.; Si, A.; Zhang, S.; Tautz, J.; Chen, S. East learns from west: Asiatic honeybees can understand dance language of European honeybees. *PLoS One* **2008**, doi:10.1371/journal.pone.0002365.
79. Wallberg, A.; Han, F.; Wellhagen, G.; Dahle, B.; Kawata, M.; Haddad, N.; Simões, Z.L.P.; Allsopp, M.H.; Kandemir, I.; De La Rúa, P.; et al. A worldwide survey of genome sequence variation provides insight into the evolutionary history of the honeybee *Apis mellifera*. *Nat. Genet.* **2014**, doi:10.1038/ng.3077.
80. Sniderman, K.J.M.; Matley, K.A.; Haberle, S.G.; Cantrill, D.J. Pollen analysis of Australian honey. *PLoS One* **2018**, doi:10.1371/journal.pone.0197545.
81. Ponnuchamy, R.; Bonhomme, V.; Prasad, S.; Das, L.; Patel, P.; Gaucherel, C.; Pragasam, A.; Anupama, K. Honey pollen: Using melissopalynology to understand foraging preferences of bees in tropical south India. *PLoS One* **2014**, doi:10.1371/journal.pone.0101618.
82. Mayhew, E.; Schmidt, S.; Lee, S.Y. Napping-Ultra Flash Profile as a Tool for Category Identification and Subsequent Model System Formulation of Caramel Corn Products. *J. Food Sci.* **2016**, doi:10.1111/1750-3841.13338.
83. Burns, D.T.; Dillon, A.; Warren, J.; Walker, M.J. A Critical Review of the Factors Available for the Identification and Determination of Mānuka Honey. *Food Anal. Methods* **2018**, doi:10.1007/s12161-018-1154-9.
84. Trifković, J.; Andrić, F.; Ristivojević, P.; Guzelmeric, E.; Yesilada, E. Analytical methods in tracing honey authenticity. *J. AOAC Int.* **2017**, doi:10.5740/jaoacint.17-0142.