

## **The catecholaldehyde hypothesis for the pathogenesis of catecholaminergic neurodegeneration: What we know and what we don't know**

David S. Goldstein, MD PhD

*Autonomic Medicine Section, Clinical Neurosciences Program, Division of Intramural Research, National Institute of Neurological Disorders and Stroke, National Institutes of Health, Bethesda, MD 20892 USA*

Address for correspondence: 9000 Rockville Pike MSC-1620, Building 10 Room 8N260, Bethesda, MD 20892-1620 USA. Phone: 301-496-2103. Fax: 301-402-0180. Email: [goldsteind@ninds.nih.gov](mailto:goldsteind@ninds.nih.gov). iPhone: 301-675-1110

Short title: MAO and Catecholamines

Counts: Abstract words: 250. Manuscript words: 5,218. References: 169. Figures: 6

Key words: catecholaldehyde; DOPAL; autotoxicity; monoamine oxidase; dopamine; alpha-synuclein

This draft April 28, 2021

**ABBREVIATIONS**

ALDH = aldehyde dehydrogenase

AR = aldehyde/aldose reductase

$\alpha$ S = alpha-synuclein

BDNF = brain-derived neurotrophic factor

COMT = catechol-O-methyltransferase

Cys-DA = 5-S-cysteinyl dopamine

DA = dopamine

DAT = cell membrane dopamine transporter

DLB = dementia with Lewy bodies

DOPAC = 3,4-dihydroxyphenylacetic acid

DOPAL = 3,4-dihydroxyphenylacetaldehyde

DOPAL-Q = DOPAL-quinone

DOPEGAL = 3,4-dihydroxyphenylglycolaldehyde

EPI = epinephrine

GGT = gammaglutamyl transferase

LAAAD = L-aromatic-amino-acid decarboxylase

MAO = monoamine oxidase

MSA = multiple system atrophy

NAC = N-acetylcysteine

NE = norepinephrine

NET = cell membrane norepinephrine transporter

nIRF = near-infrared fluoroscopy

PD = Parkinson disease

TH = tyrosine hydroxylase

THP = tetrahydropapaveroline

TrkB = tyrosine kinase B

VMAT = vesicular monoamine transporter

## ABSTRACT

3,4-dihydroxyphenylacetaldehyde (DOPAL) is the focus of the catecholaldehyde hypothesis for the pathogenesis of Parkinson disease and other Lewy body diseases. The catecholaldehyde is produced via oxidative deamination catalyzed by monoamine oxidase (MAO) acting on cytoplasmic dopamine. DOPAL is autotoxic, in that it can harm the same cells in which it is produced. Normally DOPAL is detoxified by aldehyde dehydrogenase (ALDH)-mediated conversion to 3,4-dihydroxyphenylacetic acid (DOPAC), which rapidly exits the neurons. Genetic, environmental, or drug-induced manipulations of ALDH that build up DOPAL promote catecholaminergic neurodegeneration. A concept derived from the catecholaldehyde hypothesis imputes deleterious interactions between DOPAL and the protein alpha-synuclein ( $\alpha$ S), a major component of Lewy bodies. DOPAL potently oligomerizes  $\alpha$ S, and  $\alpha$ S oligomers impede vesicular and mitochondrial functions, shifting the fate of cytoplasmic dopamine toward MAO-catalyzed formation of DOPAL—destabilizing vicious cycles. Direct and indirect effects of DOPAL and of DOPAL-induced misfolded proteins could “freeze” intra-neuronal reactions, plasticity of which is required for neuronal homeostasis. The extent to which DOPAL toxicity is mediated by interactions with  $\alpha$ S, and vice versa, are poorly understood. Because of numerous secondary effects such as augmented spontaneous oxidation of dopamine by MAO inhibition, there has been insufficient testing of the catecholaldehyde hypothesis in animal models. The clinical pathophysiological significance of genetics, emotional stress, environmental agents, and interactions with numerous proteins relevant to the catecholaldehyde hypothesis are matters for future research. The imposing complexity of intra-neuronal catecholamine metabolism seems to require a computational modeling approach to elucidate clinical pathogenetic mechanisms and devise pathophysiology-based, individualized treatments.

## Introduction

The “catecholaldehyde hypothesis” offers a unitary answer to four key questions about the pathogenesis of Parkinson disease (PD) and related Lewy body diseases: (1) Only a very small percent of neurons are catecholaminergic. What makes them so susceptible, such that they are relatively selectively lost? (2) How do generalized abnormalities such as mutations and exposure to environmental toxins lead to specific loss of catecholaminergic neurons? (3) Why does the protein alpha-synuclein ( $\alpha$ S) tend to precipitate in catecholaminergic neurons in Lewy body diseases? and (4) Why are Lewy body diseases aging-related?

3,4-Dihydroxyphenylacetaldehyde (DOPAL) is the focus of the catecholaldehyde hypothesis. DOPAL is formed from dopamine in the neuronal cytoplasm via enzymatic deamination catalyzed monoamine oxidase (MAO) (Figure 1). Despite the central position of DOPAL in the disposition of endogenous dopamine, the world’s literature on DOPAL (based on listings in PubMed) consists of only about 130 articles, in contrast with about 170,000 for dopamine. The starting point in presenting the catecholaldehyde hypothesis is the role of MAO in DOPAL production (Goldstein 2020a).

### MAO and intra-neuronal metabolism of catecholamines

In 1928 Mary L.C. Hare described an enzyme in the liver that oxidized and deaminated the dietary amine tyramine and resulted in the formation of ammonia (Hare 1928). She noted that the amount of ammonia generated by this amine oxidase was one-half that of the oxygen consumed. Subsequently, Kohn explained this in terms of formation of hydrogen peroxide (which is then metabolized by catalase) and an aldehyde, 4-hydroxyphenylacetaldehyde (Kohn 1937). Demonstration that the catecholamine adrenaline and tyramine competed for the same enzyme led to abandonment of the notion of a separate “adrenaline oxidase.”

After Julius Axelrod showed that the major route of exogenously administered catecholamine is O-methylation catalyzed by catechol-O-methyltransferase (COMT) (Axelrod 1966), routes of inactivation of endogenous catecholamines were unclear. Eventually it was recognized that in contrast with exogenously administered catecholamines, catecholamines

produced within neurons (norepinephrine and dopamine) are metabolized mainly by MAO (Kopin 1964; Kopin 1994).

Within cells MAO is localized to the outer mitochondrial membrane (Cotzias & Dole 1951). This localization is potentially important, because recent evidence suggests that in contrast with inferences from test tube experiments, in catecholaminergic cells an effect of enzymatic oxidative deamination of dopamine is not to generate hydrogen peroxide in the cytoplasm but to stimulate the mitochondrial electron transport system (Graves *et al.* 2020).

Youdim, Sandler, and colleagues obtained evidence for multiple isoforms of MAO (Collins *et al.* 1970; Youdim *et al.* 1969), which came to be called MAO-A and MAO-B. In 1968 Johnston noted that MAO-A is efficiently antagonized by clorgyline (Johnston 1968). The drug deprenyl (the levo-rotatory stereoisomer of selegiline) was found to antagonize MAO-B (Knoll & Magyar 1972). The genes encoding MAO-A and MAO-B occur adjacent to each other on the X-chromosome (Pintar *et al.* 1981; Kochersperger *et al.* 1986).

MAO-A has been thought to be characterized by high affinity for norepinephrine and serotonin and sensitivity to inhibition by clorgyline and MAO-B by high affinity for phenylethylamine and benzylamine and sensitivity to inhibition by deprenyl (Shih *et al.* 1999). It has also been thought that dopamine is equally susceptible to metabolism by MAO-A and MAO-B (Finberg 2020). Although it has long been recognized that dopamine is more readily metabolized by MAO than is norepinephrine or epinephrine, the relative susceptibilities of catecholamines to MAO-A and MAO-B were not assessed formally until recently, based on assays of the aldehyde products DOPAL from MAO acting on dopamine and 3,4-dihydroxyphenylglycolaldehyde (DOPEGAL) from MAO acting on norepinephrine or epinephrine (Goldstein *et al.*, unpublished observations). All three of the body's endogenous catecholamines are more efficiently metabolized by MAO-A than by MAO-B; and dopamine is more efficiently metabolized to DOPAL than norepinephrine or epinephrine is to DOPEGAL by both MAO isoforms. Norepinephrine and epinephrine are equivalent in terms of digestion by MAO-A and MAO-B.

Although most of MAO activity in the brain is of the B type, MAO-A figures prominently in the oxidative deamination of striatal dopamine (Demarest & Moore 1981; Wachtel & Abercrombie 1994; Dyck *et al.* 1993; Kumagae *et al.* 1991; Colzi *et al.* 1990). Based on mRNA contents, MAO-A is expressed in noradrenergic and dopaminergic cell groups, with relatively little MAO-B expression (Jahng *et al.* 1997). Substantia nigra dopaminergic neurons of mice express both MAO-A and MAO-B, with a predominance of MAO-A (Graves *et al.* 2020). Sympathetic nerves contain mainly MAO-A (Gershon *et al.* 1990).

Administration of drugs that are selective MAO-B inhibitors *in vitro* can inhibit MAO-A *in vivo* (Eisenhofer *et al.* 1986; Fowler *et al.* 2015; Naoi *et al.* 2016). Bases for this phenomenon are unclear but seem to be related to the chronicity of dosing (Bartl *et al.* 2014). In humans, treatment with the MAO-B inhibitors deprenyl or rasagiline decreases plasma levels of 3,4-dihydroxyphenylacetic acid (DOPAC) and 3,4-dihydroxyphenylglycol (DHPG), the respective main intra-neuronal metabolites of dopamine and norepinephrine (Eisenhofer *et al.* 1986; Goldstein *et al.* 2016a) (Figures 1-3).

### **DOPAL toxicity**

After Blaschko's expression of concern in 1952 that aldehydes produced from MAO-catalyzed oxidative deamination of catecholamines might be toxic (Blaschko 1952), about 40 years elapsed before the first evidence of catecholaldehyde toxicity was reported by Mattammal *et al.* Applying a gas chromatography-mass spectrometry method they noted the presence of DOPAL in post-mortem substantia nigra tissue from patients with PD but not in control subjects (Mattammal *et al.* 1993). In the same study they reported that incubation of dopamine with MAO-B resulted in 4-5-fold increases in covalent binding to DNA, bovine serum albumin, and microtubular protein. This finding presaged the relatively recent discovery of DOPAL-mediated oligomerization and quinone adduct formation ("quinonization") of numerous proteins in catecholaminergic cells (Jinsmaa *et al.* 2018).

Mattammal *et al.* also reported that (1) DOPAL is taken up into striatal synaptosomes via the cell membrane dopamine transporter (DAT); (2) DOPAL concentration- and time-

independently releases DA from synaptosomes, due to damaging the synaptosomal membranes; (3) in rat pheochromocytoma PC12 cells differentiated with nerve growth factor, DOPAL concentration-dependently depletes cell contents of dopamine, DOPAC, and homovanillic acid (HVA, the end-product of dopamine metabolism) and kills cells based on both cell counts and release of lactate dehydrogenase into the medium; (4) in primary cultures of ventral midbrain from rat embryos, at DOPAL concentrations of 7.5-20  $\mu\text{M}$  there are reductions in dopamine uptake without a reduction in the number of tyrosine hydroxylase (TH)-positive cells, and at higher concentrations there is cellular loss; and (5) surviving TH-positive cells show rounded cell bodies and fragmented fiber networks. Mattammal et al. concluded that DOPAL may be an endogenous toxin in catecholaminergic cells—an autotoxin, referring to an endogenous substance that can harm the same cells in which it is produced (Goldstein *et al.* 2014a).

Studies soon afterward by Burke and colleagues focused on DOPAL as a pathogenetic factor in PD. Kristal et al. reported that DOPAL targets mitochondria. In energetically compromised mitochondria DOPAL induces mitochondrial permeability transition, a trigger for cell death by necrosis or apoptosis (Kim *et al.* 2003). Mitochondrial pore opening permits numerous solutes to diffuse from the cytoplasm across the mitochondrial inner membrane, depolarizing the mitochondria, uncoupling oxidative phosphorylation, and impeding generation of ATP that required for vital cellular processes. In this regard DOPAL is far more potent than dopamine (Kristal *et al.* 2001).

Li et al. reported that DOPAL reacts with hydrogen peroxide to generate extremely toxic hydroxyl radicals (Li *et al.* 2001). The relevance of this finding to pathophysiology is unclear, because hydrogen peroxide is broken down by catalase and because within cells MAO acting on dopamine may not actually increase cytoplasmic hydrogen peroxide levels (Graves *et al.* 2020).

Burke et al. examined the *in vivo* toxicity of exogenously administered DOPAL in rat substantia nigra and ventral tegmental area. At 5 days post-surgery, DOPAL at concentrations as low as 100 ng was found to be toxic selectively to nigral dopaminergic neurons (Burke *et al.* 2003). Several years later, another *in vivo* animal study of exogenously administered DOPAL in

rats reported that DOPAL evokes neuronal loss in the substantia nigra pars compacta and loss of striatal dopaminergic terminals and produces rotational asymmetry as is seen in other PD animal models (Panneton *et al.* 2010).

### **Toxicity from spontaneous oxidation of cytoplasmic dopamine**

Fornstedt and Carlsson discovered that MAO inhibition increases the formation of 5-S-cysteinyldopamine (Cys-DA) in guinea pig brain (Fornstedt & Carlsson 1991). This spurred a line of research implicating dopamine itself as an autotoxin, based on oxidation of dopamine to dopamine-quinone and then a variety of distal oxidation products (Carlsson & Fornstedt 1991; Weingarten & Zhou 2001; Dukes *et al.* 2005; Khan *et al.* 2005; Hasegawa *et al.* 2006; Bisaglia *et al.* 2007; Chen *et al.* 2008; Paris *et al.* 2009; Leong *et al.* 2009; Mosharov *et al.* 2009; Hastings 2009; Bisaglia *et al.* 2010; Surmeier *et al.* 2011; Wu & Johnson 2011; Jana *et al.* 2011; Surh & Kim 2010; Lee *et al.* 2011a; Gautam & Zeevalk 2011; Munoz *et al.* 2012; Bisaglia *et al.* 2013; Su *et al.* 2013; Banerjee *et al.* 2014; Cai *et al.* 2014; Herrera *et al.* 2017; Burbulla *et al.* 2017; Mor *et al.* 2017; Badillo-Ramirez *et al.* 2019) (Figures 1-2). Some of these are known to be neurotoxic, such as aminochrome (Linsenhardt *et al.* 2009; Paris *et al.* 2009; Segura-Aguilar 2019), Cys-DA (Montine *et al.* 1997; Badillo-Ramirez *et al.* 2019), and isoquinolines (Storch *et al.* 2002; Nagatsu 1997). These products of spontaneous dopamine oxidation have in common that they are toxic to mitochondria (Jana *et al.* 2011).

### **DOPAL detoxification by aldehyde dehydrogenase (ALDH)**

Blaschko theorized that enzymatic metabolism via mitochondria detoxifies the aldehydes produced by amine oxidases acting on monoamines. He wrote, "...the amine oxidase reaction results in the formation of two toxic metabolites, both of which are removed by reactions which take place in the mitochondria. One of these metabolites is ammonia which is removed in the mitochondria by urea synthesis, the other is an aldehyde which is further metabolised in reactions known to be linked with the cytochrome-cytochrome oxidase system. The location of amine oxidase in the mitochondria thus ensures that these two end products of the enzymatic reaction are rendered harmless not far from the site where they are formed" (Blaschko 1952). In



1957 he wrote, “Oxidative deamination by amine oxidases leads to the formation of an aldehyde, but the aldehyde is usually further oxidized to the corresponding carboxylic acid.” (Blaschko 1957).

DOPAL is converted to the acid DOPAC via aldehyde dehydrogenase (ALDH), and the DOPAC produced rapidly exits the cells. Thus, in PC12 cells DOPAC is extruded actively via a sulfonyleurea-sensitive transporter (Lamensdorf *et al.* 2000b). One may conceptualize that MAO keeps cytoplasmic dopamine levels low, and ALDH in series keeps DOPAL levels low.

In the 1960s Youdim and Sandler published that reserpine inhibits ALDH (Youdim & Sandler 1968). To explain this phenomenon they wrote, “A facilitated metabolism of catecholamine, giving rise in its turn to an increased production of aldehyde, may cause substrate inhibition of aldehyde dehydrogenase.” Subsequent experimental evidence has supported the concept that DOPAL can inhibit its own metabolism by ALDH (Figure 4). There is a linear negative relationship between the percent of control ALDH activity and DOPAL concentrations in the range of 0-60  $\mu$ M (MacKerell & Pietruszko 1987).

ALDH is an important determinant of intracellular DOPAL levels. Mice with double knockout of the genes encoding the mitochondrial and cytosolic forms of ALDH have DOPAL buildup (Wey *et al.* 2012). The fungicide benomyl inhibits ALDH and also results in DOPAL accumulation (Casida *et al.* 2014). Farm chemicals inhibiting ALDH may contribute to the incidence of PD (Fitzmaurice *et al.* 2013; Fitzmaurice *et al.* 2014; Ritz *et al.* 2016). In humans it has been reported that decreased ALDH1A gene expression in blood is part of a “molecular signature” that can identify early PD (Molochnikov *et al.* 2012). ALDH1A1 gene expression and protein are decreased in substantia nigra specimens in patients with PD (Grunblatt *et al.* 2018; Mandel *et al.* 2005).

The mitochondrial complex 1 inhibitor rotenone indirectly decreases ALDH activity (Goldstein *et al.* 2015) by interfering with its co-factor  $\text{NAD}^+$ , and rotenone therefore increases endogenous DOPAL production in PC12 cells (Lamensdorf *et al.* 2000a). Predictably, ALDH2

activation is protective in cellular and animal models of rotenone-induced neurotoxicity (Chiu *et al.* 2015).

Graves *et al.* (Graves *et al.* 2020) recently advanced the concept that rather than MAO resulting in hydrogen peroxide production in the cytoplasm, because of the positioning of MAO in the outer mitochondrial membrane electrons are shuttled through the intermembrane space to increase activity of the electron transport cascade leading to ATP production. The model does not mention the consequences of DOPAL production or that generation of  $\text{NAD}^+$  is required for ALDH to detoxify DOPAL.

### **Vesicular uptake as a detoxification mechanism**

Active uptake of cytoplasmic dopamine into vesicles via the vesicular monoamine transporter (VMAT) is not only required for dopaminergic neurotransmission but also serves as a detoxification mechanism (Gainetdinov *et al.* 1998; Fumagalli *et al.* 1999; Staal & Sonsalla 2000; Guillot & Miller 2009) (Figure 2). This includes autotoxicity exerted by dopamine itself (Weingarten & Zhou 2001). Animals with reduced activity of the type 2 VMAT have evidence of progressive nigrostriatal and locus ceruleus neurodegeneration (Caudle *et al.* 2007; Taylor *et al.* 2014), while increased VMAT activity is neuroprotective (Lohr *et al.* 2014; Munoz *et al.* 2012). Unexpectedly, mice with genetically determined very low VMAT2 activity do not have evidence of DOPAL buildup (Goldstein *et al.* 2014b). These animals have elevated tissue DOPAC/DOPAL ratios, suggesting differential survival based on increased DOPAL detoxification by ALDH.

### **The double hit concept**

For a given rate of cytoplasmic dopamine synthesis, DOPAL levels are determined by dopamine uptake into vesicles and DOPAL metabolism (Figure 2). Although a small amount of DOPAL is metabolized to 3,4-dihydroxyphenylethanol (DOPET) by aldehyde/aldose reductase (AR), the main enzymatic fate of cytoplasmic DOPAL is metabolism to DOPAC via ALDH. Accordingly, blockade by reserpine of vesicular uptake increases endogenous DOPAL levels in PC12 cells, and concurrent inhibition of ALDH increases DOPAL levels further (Goldstein *et al.*

2012). Post-mortem neurochemical evidence for a “double hit” of a vesicular storage defect with decreased ALDH activity has been reported in putamen tissue from patients with PD (Goldstein *et al.* 2013).

### **DOPAL-protein interactions, with emphasis on alpha-synuclein**

DOPAL interacts with numerous intra-cellular proteins related to catecholamine production, storage, recycling, and metabolism (Figure 4). As noted above, DOPAL interferes with synaptosomal uptake and retention of tracer-labelled dopamine (Mattammal *et al.* 1995). DOPAL covalently binds to and inhibits the activity of TH (Mexas *et al.* 2011), the rate-limiting enzyme in catecholamine biosynthesis (Nagatsu *et al.* 1964). The ability of DOPAL to do so depends on both the catechol and aldehyde moieties (Vermeer *et al.* 2012). DOPAL also forms quinoprotein adducts with and inhibits the activity of LAAAD (Jinsmaa *et al.* 2018) and may decrease its own metabolism by ALDH (MacKerell & Pietruszko 1987).

In 1997, first genotypic abnormality producing familial PD was identified—A53T mutation of the gene encoding the protein alpha-synuclein ( $\alpha$ S) (Polymeropoulos *et al.* 1997). In the same year, Lewy bodies, a histopathologic hallmark of idiopathic PD, were found to contain abundant  $\alpha$ S (Spillantini *et al.* 1997). Since then the view has evolved that PD as typically encountered clinically is a form of synucleinopathy. Other synucleinopathies include multiple system atrophy (MSA), in which  $\alpha$ -syn is deposited in glial cytoplasmic inclusions in the brain (Wakabayashi *et al.* 1998); dementia with Lewy bodies (Baba *et al.* 1998); and pure autonomic failure (PAF) (Arai *et al.* 2000; Kaufmann *et al.* 2001).

Since then it has been suggested that dopamine oxidation products contribute to the pathogenesis of PD by interactions with  $\alpha$ S (Mor *et al.* 2017; Mazzulli *et al.* 2007; Goldstein *et al.* 2014a; Mor *et al.* 2019). There are two general routes by which this could happen. First, dopamine can promote the formation of  $\alpha$ -syn oligomers (Lee *et al.* 2011b; Saha *et al.* 2018; Leong *et al.* 2009). Non-enzymatic oxidation of dopamine results in formation of dopamine-quinone (DA-Q), and oxidized dopamine interacts with  $\alpha$ S (Hasegawa *et al.* 2006). Moreover, aminochrome and 5,6-dihydroxyindole, which are products of dopamine oxidation, can

oligomerize  $\alpha$ -syn (Huenchuguala *et al.* 2019; Munoz *et al.* 2015; Pham *et al.* 2009).

Second, DOPAL can oxidize spontaneously to DOPAL-quinone (DOPAL-Q) (Follmer *et al.* 2015; Jinsmaa *et al.* 2018; Anderson *et al.* 2011) (Figures 5-6). DOPAL oligomerizes  $\alpha$ S (Burke *et al.* 2008), and oligomerized  $\alpha$ S seems to be pathogenic (Winner *et al.* 2011; Gustafsson *et al.* 2017; Deas *et al.* 2016). Divalent metal cations—especially Cu(II)—augment DOPAL-induced  $\alpha$ S oligomerization (Jinsmaa *et al.* 2014). DOPAL also forms covalent quinone adducts with (“quinonizes”) many other PD-related proteins (Jinsmaa *et al.* 2018). Quinonization may interfere with the functions of these proteins and thereby with numerous intra-cellular processes.

DOPAL-induced  $\alpha$ S oligomers impede vesicular functions (Plotegher *et al.* 2017), which could set the stage for a vicious cycle. DOPAL-induced  $\alpha$ S oligomers also have been reported to inhibit mitochondrial oxygen consumption and decrease the mitochondrial membrane potential (Sarafian *et al.* 2019). Divalent metal cations—especially Cu(II)—augment DOPAL-induced oligomerization of  $\alpha$ S (Jinsmaa *et al.* 2014), while anti-oxidation with reduced glutathione, ascorbic acid, or N-acetylcysteine (NAC) attenuates the oligomerization (Follmer *et al.* 2015; Jinsmaa *et al.* 2018; Anderson *et al.* 2016).

DOPAL-induced oligomerization of AS has been proposed to reflect condensation of two DOPAL molecules in a catechol pyrrole lysine adduct, followed by formation of isoindole linkages (Werner-Allen *et al.* 2016; Werner-Allen *et al.* 2018). Superoxide radical drives this process (Werner-Allen *et al.* 2017). Since superoxide is also generated when DOPAL oxidizes, this is another potential vicious cycle. A recent report supported the catecholaldehyde hypothesis, in that Schiff base adducts between DOPAL and the amines rasagiline or aminoindan were found to inhibit DOPAL-induced  $\alpha$ -syn aggregation and toxicity (Kumar *et al.* 2019).

DOPAL also evokes the formation of quinone adducts with many proteins (“quinonization”) relevant to catecholaminergic functions, including TH, L-aromatic-amino-acid-decarboxylase (LAAAD), and the type 2 VMAT (Jinsmaa *et al.* 2018). DOPAL also

oligomerizes and quinonizes ubiquitin (Jinsmaa *et al.* 2018), suggesting that DOPAL may interfere with the proteasomal disposition of other misfolded proteins.

The literature on DA oxidation and synucleinopathy has generally overlooked DOPAL (Asanuma *et al.* 2003; Segura-Aguilar 2017; Mazzulli *et al.* 2006; Mor *et al.* 2017; Burbulla *et al.* 2017; Leong *et al.* 2009; Mor *et al.* 2019), and the literature on DOPAL and synucleinopathy has generally overlooked DA-Q (Burke *et al.* 2008; Follmer *et al.* 2015; Jinsmaa *et al.* 2018; Cagle *et al.* 2019). In the few studies where DOPAL and dopamine have been compared directly in terms of oligomerizing  $\alpha$ -syn, DOPAL has been found to be far more potent (Burke *et al.* 2008; Jinsmaa *et al.* 2014; Jinsmaa *et al.* 2018; Jinsmaa *et al.* 2020). A recent study found that DOPAL is not only more potent than dopamine in oligomerizing  $\alpha$ S but also that DOPAL quinonizes  $\alpha$ S (Jinsmaa *et al.* 2020). Even in the setting of dopamine oxidation evoked by Cu(II) or tyrosinase, dopamine does not quinonize  $\alpha$ S (Figure 5).

The differences in potencies of DOPAL and dopamine in oligomerizing and quinonizing  $\alpha$ S may be explained by their different chemical structures (Rees *et al.* 2009). Dopamine has a terminal amine group, while DOPAL has a reactive aldehyde group that can bind covalently to lysine residues (Anderson *et al.* 2016), which are abundant in the  $\alpha$ S molecule (Rees *et al.* 2009; Follmer *et al.* 2015; Plotegher *et al.* 2017). Thus, occupation of lysine residues completely prevents both the oligomerization and quinonization of  $\alpha$ S by DOPAL (Jinsmaa *et al.* 2018).

The discovery that DOPAL induces quinonization of numerous intracellular proteins is relatively new, and there is scant literature about how this happens. N-acetylcysteine (NAC) inhibits DOPAL-induced quinonization of  $\alpha$ S (Jinsmaa *et al.* 2018; Jinsmaa *et al.* 2020), consistent with dependence of the quinonization on oxidation of DOPAL to DOPAL-Q. Whether quinonization is a step in the oligomerization of  $\alpha$ S remains unknown.

The extent of quinonization of  $\alpha$ S by Cu(II)+DOPAL is about twice as great with the A53T mutant form of  $\alpha$ S than with human wild-type  $\alpha$ S (Jinsmaa *et al.* 2020). This finding suggests that, at least in the setting of Cu(II), neurons expressing mutant forms of  $\alpha$ S may be more vulnerable to DOPAL-induced quinonization than neurons expressing WT  $\alpha$ S (Jinsmaa *et al.*

2020). So far there has been no demonstration that DOPAL-induced cytotoxicity is mediated by protein quinonization.

Braak's "gut first" concept states that "a putative environmental pathogen capable of passing the gastric epithelial lining might induce  $\alpha$ S misfolding and aggregation in specific cell types of the submucosal plexus and reach the brain via a consecutive series of projection neurons" (Braak *et al.* 2006). Almost half of the synthesis and metabolism of dopamine in the body takes place in non-neuronal cells of the gut (Eisenhofer *et al.* 1997). One may speculate that DOPAL produced locally from abundant non-neuronal dopamine reacts with  $\alpha$ S to induce a pathogenic cascade.

A recent study involved DOPAL injection into the vagus nerve, to help understand the frequent association of autonomic failure with PD (Sun *et al.* 2021). DOPAL-treated rats had evidence of baroreflex dysfunction, orthostatic hypotension, and time-dependent associated changes in  $\alpha$ S monomers/trimers. The data suggest the plausibility of "body-first" subtype of PD that features autonomic abnormalities (Berg *et al.* 2021).

$\alpha$ S may also interact with DOPAL by increasing activities of MAO-A or MAO-B, which would be expected to build up DOPAL for given rates of production of dopamine in the cytoplasm. Kang *et al.* recently reported that  $\alpha$ S binds to and directly increases activity of MAO-B (Kang *et al.* 2018). This in turn triggers asparagine endopeptidase and cleavage of  $\alpha$ S at N103. The cleavage is then thought to lead to dopaminergic neurodegeneration. The authors found that DOPAL strongly activates asparagine endopeptidase, and the N103 fragment of  $\alpha$ S binds and activates MAO-B, which could result in a lethal positive feedback loop. Jia *et al.* recently reported that  $\alpha$ S up-regulates MAO-A (Jia *et al.* 2021).

Brain-derived neurotrophic factor (BDNF)/tyrosine kinase B (TrkB) signaling is required for the survival of dopaminergic neurons. Kang *et al.* reported that  $\alpha$ S interacts with TrkB receptors and inhibits BDNF/TrkB signaling, leading to dopaminergic neuronal death. DOPAL stimulates this harmful interaction, and rasagiline prevents the  $\alpha$ S-induced dopaminergic neuronal death and restores motor functions (Kang *et al.* 2017).

As scanty as the literature is about DOPAL-related neurotoxicity, there is even less literature about DOPEGAL, which is the catecholaldehyde produced by the action of MAO on norepinephrine (Figure 3). An early neuropathological feature of Alzheimer's disease is deposition of the protein Tau in neurons of the pontine locus ceruleus, which is the main source of norepinephrine in the brain. Kang et al. recently reported that DOPEGAL activates asparagine endopeptidase, which cleaves Tau and results in aggregation- and propagation-prone forms of the protein, leading to both locus ceruleus degeneration and spread of Tau pathology (Kang *et al.* 2020). The same groups has reported that DOPAL induces activation of asparagine endopeptidase (Kang *et al.* 2018). Intra-dermal DOPEGAL injection has also been reported to produce mechanical hyperalgesia in an animal model of alcoholic peripheral neuropathy (Dina *et al.* 2008).

### **Stress and the catecholaldehyde hypothesis**

Catecholaminergic systems operate differently from other neurotransmitter systems in that the neurotransmission is relatively slow (Greengard 2001), and the sites of neurotransmitter release are not necessarily synaptic and can occur at varicosities along widely arborizing axons (Vizi 1982; van der Velden *et al.* 2017). Catecholamine neurons behave as if continuously in "idle," analogous to a bank robber's getaway car (Goldstein 2013). When needed, on top of this idling, there is augmented release in response to and even in anticipation of emergencies and activities of daily life.

One may ask what the value is of "leaky" vesicles that cause a high rate of turnover of catecholamines even without exocytotic release. Extending on the automotive analogy, an explanation offered by Eisenhofer is based on "gearing down" (Eisenhofer *et al.* 2004). In the human heart about 3/4 of norepinephrine turnover is due to intraneuronal metabolism of norepinephrine leaking from storage vesicles. Norepinephrine stores are in a highly dynamic equilibrium with the cytoplasm, and passive leakage is balanced by active uptake via the VMAT. Having leaky stores may gear down the requirement for increases in catecholamine synthesis to



match increases in catecholamine release and neurons with a capacity for more extended range of sustainable release rates in response to stress than would otherwise be possible.

Activation of the “central stress system,” conceptualized to be embedded in the central autonomic network (Benarroch 1993; Goldstein 2020b), increases exocytotic release of catecholamines in the brain and periphery (Valentino *et al.* 2017; Carlson *et al.* 1968; Shanks *et al.* 1994). Most of neurotransmitter catecholamines are recycled by neuronal reuptake (Axelrod and Kopin 1969; Hertting and Axelrod 1961) mediated by the DAT and NET. In essence, stress therefore results in a shift from vesicular stores to the cytoplasm, where the catecholamines can be oxidized by MAO. Repeated episodes of distress might then promote neuronal injury via autotoxicity.

Although direct evidence is lacking, the results of several studies fit with this notion. In rats, repeated immobilization, which activates catecholaminergic neurons inside and outside the brain (Pacak *et al.* 1992, 1993b; Kvetnansky *et al.* 1992a, b), reduces the numbers of substantia nigra dopaminergic and locus ceruleus noradrenergic neurons (Sugama *et al.* 2016), as in PD (Zarow *et al.* 2003). Exposure to multiple, random unpredictable stressors exacerbates the loss of TH-positive neurons in the substantia nigra that is evoked by the neurotoxin 6-hydroxydopamine (Hemmerle *et al.* 2014). In mice, chronic exposure to a mild stress paradigm augments neurotoxin-related neurodegeneration (Janakiraman *et al.* 2017). Chronic restraint (a severe stressor) promotes rotenone-induced neurotoxic effects in the brain, including loss of substantia nigra TH-positive cells and reduced striatal concentrations of dopamine (Dodiya *et al.* 2020). Rotenone alone did not cause overt nigral neuronal loss in this study.

### **MAO inhibitor trials and the catecholaldehyde hypothesis**

Since MAO is required for DOPAL formation, a seemingly straightforward test of the catecholaldehyde hypothesis would be to assess whether MAO inhibitors slow the progression of PD; however, results of large multi-center trials of the MAO-B inhibitors deprenyl and rasagiline failed to demonstrate efficacy convincingly (Group 1996; Ward 1994; Fabbrini *et al.* 2012; Olanow *et al.* 2009; de la Fuente-Fernandez *et al.* 2010).



There are two potential explanations for this failure. One is that the subjects in these clinical trials already had symptomatic PD, and the neurodegenerative process might already have been advanced by the time their symptoms manifested clinically. There seems to be a long preclinical period during which catecholaminergic neurons are dysfunctional—we call this the “sick-before-dead” phenomenon (Lamotte *et al.* 2019). In at-risk individuals, cerebrospinal fluid indices of central dopamine deficiency predict the later development of PD (Goldstein *et al.* 2018b).

Second, as inspection of the steps in Figure 1 would predict, MAO inhibitors increase the spontaneous oxidation of cytoplasmic dopamine, as indicated by increased levels of Cys-DA (Fornstedt & Carlsson 1991; Goldstein *et al.* 2016a). We call this the “MAOI tradeoff.” The catecholaldehyde hypothesis has not yet been put to a correct test in humans.

The dietary supplements NAC and hydroxytyrosol (synonymous with DOPET) do not interfere with the ability of MAO-B inhibitors to decrease endogenous DOPAL production, yet they attenuate the MAO inhibitor-induced increase in Cys-DA (Goldstein *et al.* 2017; Goldstein *et al.* 2016b). A reasonable strategy would be to combine NAC or hydroxytyrosol with an MAO inhibitor. A trial of oral and intravenous NAC reported retardation in the progression of symptoms of PD and of the striatal dopaminergic lesion (Monti *et al.* 2016; Monti *et al.* 2019). NAC also mitigates DOPAL-induced  $\alpha$ S oligomerization, probably via decreasing the spontaneous oxidation of DOPAL to form DOPAL-Q (Jinsmaa *et al.* 2018).

Ideally, such a trial would involve patients with early disease or even people at risk for PD who have biomarkers of catecholaminergic neurodegeneration but without motor signs. Cardiac sympathetic neuroimaging evidence of myocardial noradrenergic deficiency and low cerebrospinal fluid levels of DOPA and DOPAC predict PD in at-risk individuals (Goldstein *et al.* 2018a). In patients with PD, the severity of the cardiac noradrenergic lesion progresses over time (Lamotte *et al.* 2019), and PAF can evolve into PD, DLB, or both (Kaufmann *et al.* 2017). By combining biomarkers of catecholaminergic dysfunction in extant neurons—the sick-but-not-dead phenomenon (Goldstein *et al.* 2019; Goldstein 2020c)—with biomarkers of deposition of

$\alpha$ S in sympathetic noradrenergic nerves (Isonaka *et al.* 2019), an enriched enough population might be identified for efficient testing of the catecholaldehyde hypothesis.

### **Gaps in knowledge and goals for the future**

Even cursory inspection of the concept diagrams in Figures 2-4 and 6 bring to mind gaps in knowledge and challenges that future research can address. This section frames the issues in terms of as yet unanswered—but answerable—questions.

- (1) Regarding the metabolic fate of cytoplasmic dopamine, what proportions of cytoplasmic dopamine undergo spontaneous vs. enzymatic oxidation? Why do MAO-B-selective drugs decrease levels of catecholamine metabolites thought to be produced within neurons that express MAO-A?
- (2) Regarding DOPAL-induced quinonization of intracellular proteins, what are the functional consequences for the proteins involved with reactions in catecholaminergic neurons? Does DOPAL quinonize intracellular proteins including  $\alpha$ S in vivo in sympathetic noradrenergic neurons, such as in skin biopsies? Do Lewy bodies contain DOPAL-quinonized proteins?
- (3) Regarding DOPAL- $\alpha$ S interactions and disease pathogenesis, what are the relative contributions of DOPAL and alpha-synucleinopathy to catecholaminergic neurodegeneration? In the absence of synucleinopathy is DOPAL accumulation pathogenic or a non-pathogenic biomarker? Do DOPAL and  $\alpha$ S ascend together in the periphery in “body-first” PD or PAF?

Because of the daunting complexity of intra-neuronal catecholamine metabolism and the numerous potential sites of DOPAL-related abnormalities in Lewy body diseases, a computational modeling approach seems necessary to identify patterns of altered reactions, predict the course of disease, and incite individualized treatment or preventive measures. Although such modeling has identified specific sites of abnormal catecholamine synthesis, storage, and metabolism in Lewy body diseases (Goldstein *et al.* 2019), efforts to apply computational modeling so far have not incorporated homeostasis, allostatic load, genetics, aging, stress, and autotoxicity.

### **Conclusions**

According to the catecholaldehyde hypothesis, the answers to the four questions that began this review are as follows. Catecholaminergic are especially susceptible, because DOPAL formed within catecholaminergic neurons acts as an autotoxin. (2) Mutations and exposure to environmental toxins can lead to specific loss of catecholaminergic neurons because these abnormalities promote the formation or spontaneous oxidation of DOPAL, interfere with its detoxification, or enhance DOPAL-induced protein misfolding or mitochondrial dysfunction.  $\alpha$ S tends to precipitate in catecholaminergic neurons in Lewy body diseases, because DOPAL potently oligomerizes, quinonizes, and aggregates  $\alpha$ S. Lewy body diseases are aging-related, because the harmful effects of DOPAL or DOPAL- $\alpha$ S interactions are cumulative. During a long preclinical period compensatory adjustments can maintain vesicular stores of catecholamine neurotransmitters, but eventually there is a failure of neuronal homeostasis and induction of multiple lethal positive feedback loops.

Catecholamine autotoxicity has long been considered a possible pathogenetic mechanism of catecholaminergic neurodegeneration in PD, based on the well known tendency of dopamine to oxidize spontaneously, resulting in the formation of several potentially toxic oxidation products. The catecholaldehyde hypothesis, which is based on enzymatic rather than spontaneous oxidation of cytoplasmic dopamine, is relatively new. It is hoped that this review will spur interest in further research on DOPAL-induced catecholamine autotoxicity for understanding mechanisms, identifying biomarkers, and devising novel treatment and prevention strategies for diseases that are posing an increasing public health burden as populations age.

## REFERENCES

- Anderson, D. G., Florang, V. R., Schamp, J. H., Buettner, G. R. and Doorn, J. A. (2016) Antioxidant-mediated modulation of protein reactivity for 3,4-dihydroxyphenylacetaldehyde, a toxic dopamine metabolite. *Chem. Res. Toxicol.* **29**, 1098-1107.
- Anderson, D. G., Mariappan, S. V., Buettner, G. R. and Doorn, J. A. (2011) Oxidation of 3,4-dihydroxyphenylacetaldehyde, a toxic dopaminergic metabolite, to a semiquinone radical and an ortho-quinone. *J. Biol. Chem.* **286**, 26978-26986.
- Arai, K., Kato, N., Kashiwado, K. and Hattori, T. (2000) Pure autonomic failure in association with human alpha-synucleinopathy. *Neurosci. Lett.* **296**, 171-173.
- Asanuma, M., Miyazaki, I. and Ogawa, N. (2003) Dopamine- or L-DOPA-induced neurotoxicity: the role of dopamine quinone formation and tyrosinase in a model of Parkinson's disease. *Neurotox Res* **5**, 165-176.
- Axelrod, J. (1966) Methylation reactions in the formation and metabolism of catecholamines and other biogenic amines. *Pharmacol.Rev.* **18**, 95-113.
- Baba, M., Nakajo, S., Tu, P. H., Tomita, T., Nakaya, K., Lee, V. M., Trojanowski, J. Q. and Iwatsubo, T. (1998) Aggregation of alpha-synuclein in Lewy bodies of sporadic Parkinson's disease and dementia with Lewy bodies. *Am. J. Pathol.* **152**, 879-884.
- Badillo-Ramirez, I., Saniger, J. M. and Rivas-Arancibia, S. (2019) 5-S-cysteinyl-dopamine, a neurotoxic endogenous metabolite of dopamine: Implications for Parkinson's disease. *Neurochem. Int.* **129**, 104514.
- Banerjee, K., Munshi, S., Sen, O., Pramanik, V., Roy Mukherjee, T. and Chakrabarti, S. (2014) Dopamine cytotoxicity involves both oxidative and nonoxidative pathways in SH-SY5Y cells: Potential role of alpha-synuclein overexpression and proteasomal inhibition in the etiopathogenesis of Parkinson's disease. *Parkinsons Dis.* **2014**, 878935.
- Bartl, J., Muller, T., Grunblatt, E., Gerlach, M. and Riederer, P. (2014) Chronic monoamine oxidase-B inhibitor treatment blocks monoamine oxidase-A enzyme activity. *J. Neural*

*Transm.* **121**, 379-383.

- Benarroch, E. E. (1993) The central autonomic network: functional organization, dysfunction, and perspective. *Mayo Clin. Proc.* **68**, 988-1001.
- Berg, D., Borghammer, P., Fereshtehnejad, S. M., Heinzl, S., Horsager, J., Schaeffer, E. and Postuma, R. B. (2021) Prodromal Parkinson disease subtypes - key to understanding heterogeneity. *Nat Rev Neurol.*
- Bisaglia, M., Greggio, E., Beltramini, M. and Bubacco, L. (2013) Dysfunction of dopamine homeostasis: clues in the hunt for novel Parkinson's disease therapies. *FASEB J.* **27**, 2101-2110.
- Bisaglia, M., Greggio, E., Maric, D., Miller, D. W., Cookson, M. R. and Bubacco, L. (2010) Alpha-synuclein overexpression increases dopamine toxicity in BE2-M17 cells. *BMC Neurosci* **11**, 41.
- Bisaglia, M., Mammi, S. and Bubacco, L. (2007) Kinetic and structural analysis of the early oxidation products of dopamine: analysis of the interactions with alpha-synuclein. *J. Biol. Chem.* **282**, 15597-15605.
- Blaschko, H. (1952) Amine oxidase and amine metabolism. *Pharmacol. Rev.* **4**, 415-458.
- Blaschko, H. (1957) Metabolism and storage of biogenic amines. *Experientia* **13**, 9-13.
- Braak, H., de Vos, R. A., Bohl, J. and Del Tredici, K. (2006) Gastric alpha-synuclein immunoreactive inclusions in Meissner's and Auerbach's plexuses in cases staged for Parkinson's disease-related brain pathology. *Neurosci. Lett.* **396**, 67-72.
- Burbulla, L. F., Song, P., Mazzulli, J. R. et al. (2017) Dopamine oxidation mediates mitochondrial and lysosomal dysfunction in Parkinson's disease. *Science* **357**, 1255-1261.
- Burke, W. J., Kumar, V. B., Pandey, N. et al. (2008) Aggregation of alpha-synuclein by DOPAL, the monoamine oxidase metabolite of dopamine. *Acta Neuropathol.* **115**, 193-203.
- Burke, W. J., Li, S. W., Williams, E. A., Nonneman, R. and Zahm, D. S. (2003) 3,4-Dihydroxyphenylacetaldehyde is the toxic dopamine metabolite in vivo: implications for Parkinson's disease pathogenesis. *Brain Res.* **989**, 205-213.

- Cagle, B. S., Crawford, R. A. and Doorn, J. A. (2019) Biogenic aldehyde-mediated mechanisms of toxicity in neurodegenerative disease. *Curr Opin Toxicol* **13**, 16-21.
- Cai, H., Liu, G., Sun, L. and Ding, J. (2014) Aldehyde Dehydrogenase 1 making molecular inroads into the differential vulnerability of nigrostriatal dopaminergic neuron subtypes in Parkinson's disease. *Transl Neurodegener* **3**, 27.
- Carlson, L. A., Levi, L. and Oro, L. (1968) Plasma lipids and urinary excretion of catecholamines in man during experimentally induced emotional stress, and their modification by nicotinic acid. *J Clin Invest* **47**, 1795-1805.
- Carlsson, A. and Fornstedt, B. (1991) Possible mechanisms underlying the special vulnerability of dopaminergic neurons. *Acta Neurol. Scand. Suppl.* **136**, 16-18.
- Casida, J. E., Ford, B., Jinsmaa, Y., Sullivan, P., Cooney, A. and Goldstein, D. S. (2014) Benomyl, aldehyde dehydrogenase, DOPAL, and the catecholaldehyde hypothesis for the pathogenesis of Parkinson's disease. *Chem. Res. Toxicol.* **27**, 1359-1361.
- Caudle, W. M., Richardson, J. R., Wang, M. Z. et al. (2007) Reduced vesicular storage of dopamine causes progressive nigrostriatal neurodegeneration. *J. Neurosci.* **27**, 8138-8148.
- Chen, L., Ding, Y., Cagniard, B., Van Laar, A. D., Mortimer, A., Chi, W., Hastings, T. G., Kang, U. J. and Zhuang, X. (2008) Unregulated cytosolic dopamine causes neurodegeneration associated with oxidative stress in mice. *J. Neurosci.* **28**, 425-433.
- Chiu, C. C., Yeh, T. H., Lai, S. C. et al. (2015) Neuroprotective effects of aldehyde dehydrogenase 2 activation in rotenone-induced cellular and animal models of parkinsonism. *Exp. Neurol.* **263**, 244-253.
- Collins, G. G., Sandler, M., Williams, E. D. and Youdim, M. B. (1970) Multiple forms of human brain mitochondrial monoamine oxidase. *Nature* **225**, 817-820.
- Colzi, A., d'Agostini, F., Kettler, R., Borroni, E. and Da Prada, M. (1990) Effect of selective and reversible MAO inhibitors on dopamine outflow in rat striatum: a microdialysis study. *J Neural Transm Suppl* **32**, 79-84.
- Cotzias, G. C. and Dole, V. P. (1951) Metabolism of amines. II. Mitochondrial localization of

- monoamine oxidase. *Proc Soc Exp Biol Med* **78**, 157-160.
- de la Fuente-Fernandez, R., Schulzer, M., Mak, E. and Sossi, V. (2010) Trials of neuroprotective therapies for Parkinson's disease: problems and limitations. *Parkinsonism Relat. Disord.* **16**, 365-369.
- Deas, E., Cremades, N., Angelova, P. R. et al. (2016) Alpha-Synuclein Oligomers Interact with Metal Ions to Induce Oxidative Stress and Neuronal Death in Parkinson's Disease. *Antioxid. Redox Signal.* **24**, 376-391.
- Demarest, K. T. and Moore, K. E. (1981) Type A monoamine oxidase catalyzes the intraneuronal deamination of dopamine within nigrostriatal, mesolimbic, tuberoinfundibular and tuberohypophyseal neurons in the rat. *J Neural Transm* **52**, 175-187.
- Dina, O. A., Khasar, S. G., Alessandri-Haber, N., Bogen, O., Chen, X., Green, P. G., Reichling, D. B., Messing, R. O. and Levine, J. D. (2008) Neurotoxic catecholamine metabolite in nociceptors contributes to painful peripheral neuropathy. *Eur. J. Neurosci.* **28**, 1180-1190.
- Dodiya, H. B., Forsyth, C. B., Voigt, R. M. et al. (2020) Chronic stress-induced gut dysfunction exacerbates Parkinson's disease phenotype and pathology in a rotenone-induced mouse model of Parkinson's disease. *Neurobiol Dis* **135**, 104352.
- Dukes, A. A., Korwek, K. M. and Hastings, T. G. (2005) The effect of endogenous dopamine in rotenone-induced toxicity in PC12 cells. *Antioxid. Redox. Signal.* **7**, 630-638.
- Dyck, L. E., Durden, D. A. and Boulton, A. A. (1993) Effects of monoamine oxidase inhibitors on the acid metabolites of some trace amines and of dopamine in the rat striatum. *Biochem Pharmacol* **45**, 1317-1322.
- Eisenhofer, G., Aneman, A., Friberg, P., Hooper, D., Fandriks, L., Lonroth, H., Hunyady, B. and Mezey, E. (1997) Substantial production of dopamine in the human gastrointestinal tract. *J. Clin. Endocrinol. Metab.* **82**, 3864-3871.
- Eisenhofer, G., Goldstein, D. S., Stull, R., Keiser, H. R., Sunderland, T., Murphy, D. L. and Kopin, I. J. (1986) Simultaneous liquid-chromatographic determination of 3,4-

- dihydroxyphenylglycol, catecholamines, and 3,4-dihydroxyphenylalanine in plasma, and their responses to inhibition of monoamine oxidase. *Clin. Chem.* **32**, 2030-2033.
- Eisenhofer, G., Kopin, I. J. and Goldstein, D. S. (2004) Leaky catecholamine stores: undue waste or a stress response coping mechanism? *Ann. N. Y. Acad. Sci.* **1018**, 224-230.
- Fabbrini, G., Abbruzzese, G., Marconi, S. and Zappia, M. (2012) Selegiline: a reappraisal of its role in Parkinson disease. *Clin. Neuropharmacol.* **35**, 134-140.
- Finberg, J. P. M. (2020) The discovery and development of rasagiline as a new anti-Parkinson medication. *J Neural Transm (Vienna)* **127**, 125-130.
- Fitzmaurice, A. G., Rhodes, S. L., Cockburn, M., Ritz, B. and Bronstein, J. M. (2014) Aldehyde dehydrogenase variation enhances effect of pesticides associated with Parkinson disease. *Neurology* **82**, 419-426.
- Fitzmaurice, A. G., Rhodes, S. L., Lulla, A. et al. (2013) Aldehyde dehydrogenase inhibition as a pathogenic mechanism in Parkinson disease. *Proc. Natl. Acad. Sci. U. S. A.* **110**, 636-641.
- Follmer, C., Coelho-Cerqueira, E., Yatabe-Franco, D. Y., Araujo, G. D., Pinheiro, A. S., Domont, G. B. and Eliezer, D. (2015) Oligomerization and membrane-binding properties of covalent adducts formed by the interaction of alpha-synuclein with the toxic dopamine metabolite 3,4-dihydroxyphenylacetaldehyde (DOPAL). *J. Biol. Chem.* **290**, 27660-27679.
- Fornstedt, B. and Carlsson, A. (1991) Effects of inhibition of monoamine oxidase on the levels of 5-S-cysteinyl adducts of catechols in dopaminergic regions of the brain of the guinea pig. *Neuropharmacology* **30**, 463-468.
- Fowler, J. S., Logan, J., Volkow, N. D. et al. (2015) Evidence that formulations of the selective MAO-B inhibitor, selegiline, which bypass first-pass metabolism, also inhibit MAO-A in the human brain. *Neuropsychopharmacology* **40**, 650-657.
- Fumagalli, F., Gainetdinov, R. R., Wang, Y. M., Valenzano, K. J., Miller, G. W. and Caron, M. G. (1999) Increased methamphetamine neurotoxicity in heterozygous vesicular monoamine transporter 2 knock-out mice. *J. Neurosci.* **19**, 2424-2431.
- Gainetdinov, R. R., Fumagalli, F., Wang, Y. M., Jones, S. R., Levey, A. I., Miller, G. W. and



- Caron, M. G. (1998) Increased MPTP neurotoxicity in vesicular monoamine transporter 2 heterozygote knockout mice. *J. Neurochem.* **70**, 1973-1978.
- Gautam, A. H. and Zeevalk, G. D. (2011) Characterization of reduced and oxidized dopamine and 3,4-dihydrophenylacetic acid, on brain mitochondrial electron transport chain activities. *Biochimica Biophys. Acta* **1807**, 819-828.
- Gershon, M. D., Sherman, D. L. and Pintar, J. E. (1990) Type-specific localization of monoamine oxidase in the enteric nervous system: relationship to 5-hydroxytryptamine, neuropeptides, and sympathetic nerves. *J Comp Neurol* **301**, 191-213.
- Goldstein, D. S. (2013) Biomarkers, mechanisms, and potential prevention of catecholamine neuron loss in Parkinson disease. *Adv. Pharmacol.* **68**, 235-272.
- Goldstein, D. S. (2020a) The catecholaldehyde hypothesis: where MAO fits in. *J. Neural Transm.* **127**, 169-177.
- Goldstein, D. S. (2020b) The extended autonomic system, dyshomeostasis, and COVID-19. *Clin. Auton. Res.* **30**, 299-315.
- Goldstein, D. S. (2020c) "Sick-but-not-dead": Multiple paths to catecholamine deficiency in Lewy Body diseases. *Stress*, 1-16.
- Goldstein, D. S., Holmes, C., Lopez, G. J., Wu, T. and Sharabi, Y. (2018a) Cardiac sympathetic denervation predicts PD in at-risk individuals. *Parkinsonism Relat. Disord.* **52**, 90-93.
- Goldstein, D. S., Holmes, C., Lopez, G. J., Wu, T. and Sharabi, Y. (2018b) Cerebrospinal fluid biomarkers of central dopamine deficiency predict Parkinson's disease. *Parkinsonism Relat. Disord.* **50**, 108-112.
- Goldstein, D. S., Jinsmaa, Y., Sullivan, P., Holmes, C., Kopin, I. J. and Sharabi, Y. (2016a) Comparison of monoamine oxidase inhibitors in decreasing production of the autotoxic dopamine metabolite 3,4-dihydroxyphenylacetaldehyde in PC12 cells. *J. Pharmacol. Exp. Ther.* **356**, 484-493.
- Goldstein, D. S., Jinsmaa, Y., Sullivan, P., Kopin, I. J. and Sharabi, Y. (2016b) 3,4-Dihydroxyphenylethanol (hydroxytyrosol) mitigates the increase in spontaneous oxidation

- of dopamine during monoamine oxidase inhibition in PC12 cells. *Neurochem. Res.* **41**, 2173-2178.
- Goldstein, D. S., Jinsmaa, Y., Sullivan, P. and Sharabi, Y. (2017) N-Acetylcysteine prevents the increase in spontaneous oxidation of dopamine during monoamine oxidase inhibition in PC12 cells. *Neurochem. Res.* **42**, 3289-3295.
- Goldstein, D. S., Kopin, I. J. and Sharabi, Y. (2014a) Catecholamine autotoxicity. Implications for pharmacology and therapeutics of Parkinson disease and related disorders. *Pharmacol Ther* **144**, 268-282.
- Goldstein, D. S., Pekker, M. J., Eisenhofer, G. and Sharabi, Y. (2019) Computational modeling reveals multiple abnormalities of myocardial noradrenergic function in Lewy body diseases. *JCI Insight* **5**.
- Goldstein, D. S., Sullivan, P., Cooney, A., Jinsmaa, Y., Kopin, I. J. and Sharabi, Y. (2015) Rotenone decreases intracellular aldehyde dehydrogenase activity: implications for the pathogenesis of Parkinson's disease. *J. Neurochem.* **133**, 14-25.
- Goldstein, D. S., Sullivan, P., Cooney, A., Jinsmaa, Y., Sullivan, R., Gross, D. J., Holmes, C., Kopin, I. J. and Sharabi, Y. (2012) Vesicular uptake blockade generates the toxic dopamine metabolite 3,4-dihydroxyphenylacetaldehyde in PC12 cells: relevance to the pathogenesis of Parkinson's disease. *J. Neurochem.* **123**, 932-943.
- Goldstein, D. S., Sullivan, P., Holmes, C., Miller, G. W., Alter, S., Strong, R., Mash, D. C., Kopin, I. J. and Sharabi, Y. (2013) Determinants of buildup of the toxic dopamine metabolite DOPAL in Parkinson's disease. *J. Neurochem.* **126**, 591-603.
- Goldstein, D. S., Sullivan, P., Holmes, C., Miller, G. W., Sharabi, Y. and Kopin, I. J. (2014b) A vesicular sequestration to oxidative deamination shift in myocardial sympathetic nerves in Parkinson disease. *J. Neurochem.* **131**, 219-228.
- Graves, S. M., Xie, Z., Stout, K. A. et al. (2020) Dopamine metabolism by a monoamine oxidase mitochondrial shuttle activates the electron transport chain. *Nat. Neurosci.* **23**, 15-20.
- Greengard, P. (2001) The neurobiology of slow synaptic transmission. *Science* **294**, 1024-1030.

- Group, P. S. (1996) Impact of deprenyl and tocopherol treatment on Parkinson's disease in DATATOP subjects not requiring levodopa. Parkinson Study Group. *Ann. Neurol.* **39**, 29-36.
- Grunblatt, E., Ruder, J., Monoranu, C. M., Riederer, P., Youdim, M. B. and Mandel, S. A. (2018) Differential Alterations in Metabolism and Proteolysis-Related Proteins in Human Parkinson's Disease Substantia Nigra. *Neurotox Res* **33**, 560-568.
- Guillot, T. S. and Miller, G. W. (2009) Protective actions of the vesicular monoamine transporter 2 (VMAT2) in monoaminergic neurons. *Mol. Neurobiol.* **39**, 149-170.
- Gustafsson, G., Lindstrom, V., Rostami, J., Nordstrom, E., Lannfelt, L., Bergstrom, J., Ingelsson, M. and Erlandsson, A. (2017) Alpha-synuclein oligomer-selective antibodies reduce intracellular accumulation and mitochondrial impairment in alpha-synuclein exposed astrocytes. *J. Neuroinflammation* **14**, 241.
- Hare, M. L. (1928) Tyramine oxidase: A new enzyme system in liver. *Biochem J* **22**, 968-979.
- Hasegawa, T., Matsuzaki-Kobayashi, M., Takeda, A., Sugeno, N., Kikuchi, A., Furukawa, K., Perry, G., Smith, M. A. and Itoyama, Y. (2006) Alpha-synuclein facilitates the toxicity of oxidized catechol metabolites: implications for selective neurodegeneration in Parkinson's disease. *FEBS Lett* **580**, 2147-2152.
- Hastings, T. G. (2009) The role of dopamine oxidation in mitochondrial dysfunction: implications for Parkinson's disease. *J. Bioenerg. Biomembr.* **41**, 469-472.
- Hemmerle, A. M., Dickerson, J. W., Herman, J. P. and Seroogy, K. B. (2014) Stress exacerbates experimental Parkinson's disease. *Mol Psychiatry* **19**, 638-640.
- Herrera, A., Munoz, P., Steinbusch, H. W. M. and Segura-Aguilar, J. (2017) Are Dopamine Oxidation Metabolites Involved in the Loss of Dopaminergic Neurons in the Nigrostriatal System in Parkinson's Disease? *ACS Chem. Neurosci.* **8**, 702-711.
- Huenchuguala, S., Sjodin, B., Mannervik, B. and Segura-Aguilar, J. (2019) Novel Alpha-Synuclein Oligomers Formed with the Aminochrome-Glutathione Conjugate Are Not Neurotoxic. *Neurotox. Res.* **35**, 432-440.

- Isonaka, R., Rosenberg, A. Z., Sullivan, P., Corrales, A., Holmes, C., Sharabi, Y. and Goldstein, D. S. (2019) Alpha-Synuclein deposition within sympathetic noradrenergic neurons Is associated with myocardial noradrenergic deficiency in neurogenic orthostatic hypotension. *Hypertension* **73**, 910-918.
- Jana, S., Sinha, M., Chanda, D., Roy, T., Banerjee, K., Munshi, S., Patro, B. S. and Chakrabarti, S. (2011) Mitochondrial dysfunction mediated by quinone oxidation products of dopamine: Implications in dopamine cytotoxicity and pathogenesis of Parkinson's disease. *Biochim. Biophys. Acta* **1812**, 663-673.
- Jia, C., Cheng, C., Li, T., Chen, X., Yang, Y., Liu, X., Li, S. and Le, W. (2021) alpha-Synuclein Up-regulates Monoamine Oxidase A Expression and Activity via Trans-Acting Transcription Factor 1. *Front Aging Neurosci* **13**, 653379.
- Jinsmaa, Y., Isonaka, R., Sharabi, Y. and Goldstein, D. S. (2020) 3,4-Dihydroxyphenylacetaldehyde Is More Efficient than Dopamine in Oligomerizing and Quinonizing alpha-Synuclein. *J. Pharmacol. Exp. Ther.* **372**, 157-165.
- Jinsmaa, Y., Sharabi, Y., Sullivan, P., Isonaka, R. and Goldstein, D. S. (2018) 3,4-Dihydroxyphenylacetaldehyde-induced protein modifications and their mitigation by N-acetylcysteine. *J. Pharmacol. Exp. Ther.* **366**, 113-124.
- Jinsmaa, Y., Sullivan, P., Gross, D., Cooney, A., Sharabi, Y. and Goldstein, D. S. (2014) Divalent metal ions enhance DOPAL-induced oligomerization of alpha-synuclein. *Neurosci. Lett.* **569**, 27-32.
- Johnston, J. P. (1968) Some observations upon a new inhibitor of monoamine oxidase in brain tissue. *Biochem Pharmacol* **17**, 1285-1297.
- Kang, S. S., Ahn, E. H., Zhang, Z. et al. (2018) alpha-Synuclein stimulation of monoamine oxidase-B and legumain protease mediates the pathology of Parkinson's disease. *EMBO J* **37**.
- Kang, S. S., Liu, X., Ahn, E. H. et al. (2020) Norepinephrine metabolite DOPEGAL activates AEP and pathological Tau aggregation in locus coeruleus. *J Clin Invest* **130**, 422-437.

- Kang, S. S., Zhang, Z., Liu, X., Manfredsson, F. P., Benskey, M. J., Cao, X., Xu, J., Sun, Y. E. and Ye, K. (2017) TrkB neurotrophic activities are blocked by alpha-synuclein, triggering dopaminergic cell death in Parkinson's disease. *Proc Natl Acad Sci U S A*.
- Kaufmann, H., Hague, K. and Perl, D. (2001) Accumulation of alpha-synuclein in autonomic nerves in pure autonomic failure. *Neurology* **56**, 980-981.
- Kaufmann, H., Norcliffe-Kaufmann, L., Palma, J. A. et al. (2017) Natural history of pure autonomic failure: A United States prospective cohort. *Ann. Neurol.* **81**, 287-297.
- Khan, F. H., Sen, T., Maiti, A. K., Jana, S., Chatterjee, U. and Chakrabarti, S. (2005) Inhibition of rat brain mitochondrial electron transport chain activity by dopamine oxidation products during extended in vitro incubation: implications for Parkinson's disease. *Biochim Biophys Acta* **1741**, 65-74.
- Kim, J. S., He, L. and Lemasters, J. J. (2003) Mitochondrial permeability transition: a common pathway to necrosis and apoptosis. *Biochem Biophys Res Commun* **304**, 463-470.
- Knoll, J. and Magyar, K. (1972) Some puzzling pharmacological effects of monoamine oxidase inhibitors. *Adv Biochem Psychopharmacol* **5**, 393-408.
- Kochersperger, L. M., Parker, E. L., Siciliano, M., Darlington, G. J. and Denney, R. M. (1986) Assignment of genes for human monoamine oxidases A and B to the X chromosome. *J Neurosci Res* **16**, 601-616.
- Kohn, H. I. (1937) Tyramine oxidase. *Biochem J* **31**, 1693-1704.
- Kopin, I. J. (1964) Storage and Metabolism of Catecholamines: The Role of Monoamine Oxidase. *Pharmacol Rev* **16**, 179-191.
- Kopin, I. J. (1994) Monoamine oxidase and catecholamine metabolism. *J Neural Transm Suppl* **41**, 57-67.
- Kristal, B. S., Conway, A. D., Brown, A. M., Jain, J. C., Ulluci, P. A., Li, S. W. and Burke, W. J. (2001) Selective dopaminergic vulnerability: 3,4-dihydroxyphenylacetaldehyde targets mitochondria. *Free. Radic. Biol. Med.* **30**, 924-931.
- Kumagae, Y., Matsui, Y. and Iwata, N. (1991) Deamination of norepinephrine, dopamine, and

- serotonin by type A monoamine oxidase in discrete regions of the rat brain and inhibition by RS-8359. *Jpn J Pharmacol* **55**, 121-128.
- Kumar, V. B., Hsu, F. F., Lakshmi, V. M., Gillespie, K. N. and Burke, W. J. (2019) Aldehyde adducts inhibit 3,4-dihydroxyphenylacetaldehyde-induced alpha-synuclein aggregation and toxicity: Implication for Parkinson neuroprotective therapy. *Eur J Pharmacol* **845**, 65-73.
- Lamensdorf, I., Eisenhofer, G., Harvey-White, J., Hayakawa, Y., Kirk, K. and Kopin, I. J. (2000a) Metabolic stress in PC12 cells induces the formation of the endogenous dopaminergic neurotoxin, 3,4-dihydroxyphenylacetaldehyde. *J. Neurosci. Res.* **60**, 552-558.
- Lamensdorf, I., Hrycyna, C., He, L. P., Nechushtan, A., Tjurmina, O., Harvey-White, J., Eisenhofer, G., Rojas, E. and Kopin, I. J. (2000b) Acidic dopamine metabolites are actively extruded from PC12 cells by a novel sulfonyleurea-sensitive transporter. *Naunyn Schmiedebergs Arch. Pharmacol.* **361**, 654-664.
- Lamotte, G., Holmes, C., Wu, T. and Goldstein, D. S. (2019) Long-term trends in myocardial sympathetic innervation and function in synucleinopathies. *Parkinsonism Relat. Disord.* **67**, 27-33.
- Lee, H. J., Baek, S. M., Ho, D. H., Suk, J. E., Cho, E. D. and Lee, S. J. (2011a) Dopamine promotes formation and secretion of non-fibrillar alpha-synuclein oligomers. *Exp. Mol. Med.* **43**, 216-222.
- Lee, H. J., Baek, S. M., Ho, D. H., Suk, J. E., Cho, E. D. and Lee, S. J. (2011b) Dopamine promotes formation and secretion of non-fibrillar alpha-synuclein oligomers. *Exp Mol Med* **43**, 216-222.
- Leong, S. L., Cappai, R., Barnham, K. J. and Pham, C. L. (2009) Modulation of alpha-synuclein aggregation by dopamine: a review. *Neurochem. Res.* **34**, 1838-1846.
- Li, S. W., Lin, T. S., Minter, S. and Burke, W. J. (2001) 3,4-Dihydroxyphenylacetaldehyde and hydrogen peroxide generate a hydroxyl radical: possible role in Parkinson's disease pathogenesis. *Brain Res. Mol. Brain Res.* **93**, 1-7.

- Linsenbardt, A. J., Wilken, G. H., Westfall, T. C. and Macarthur, H. (2009) Cytotoxicity of dopaminochrome in the mesencephalic cell line, MN9D, is dependent upon oxidative stress. *Neurotoxicology* **30**, 1030-1035.
- Lohr, K. M., Bernstein, A. I., Stout, K. A. et al. (2014) Increased vesicular monoamine transporter enhances dopamine release and opposes Parkinson disease-related neurodegeneration in vivo. *Proc. Natl. Acad. Sci. U.S.A.* **111**, 9977-9982.
- MacKerell, A. D., Jr. and Pietruszko, R. (1987) Chemical modification of human aldehyde dehydrogenase by physiological substrate. *Biochim Biophys Acta* **911**, 306-317.
- Mandel, S., Grunblatt, E., Riederer, P., Amariglio, N., Jacob-Hirsch, J., Rechavi, G. and Youdim, M. B. (2005) Gene expression profiling of sporadic Parkinson's disease substantia nigra pars compacta reveals impairment of ubiquitin-proteasome subunits, SKP1A, aldehyde dehydrogenase, and chaperone HSC-70. *Ann. N. Y. Acad. Sci.* **1053**, 356-375.
- Mattammal, M. B., Chung, H. D., Strong, R. and Hsu, F. F. (1993) Confirmation of a dopamine metabolite in parkinsonian brain tissue by gas chromatography-mass spectrometry. *J Chromatogr* **614**, 205-212.
- Mattammal, M. B., Haring, J. H., Chung, H. D., Raghu, G. and Strong, R. (1995) An endogenous dopaminergic neurotoxin: implication for Parkinson's disease. *Neurodegeneration* **4**, 271-281.
- Mazzulli, J. R., Armarkola, M., Dumoulin, M., Parastatidis, I. and Ischiropoulos, H. (2007) Cellular oligomerization of alpha-synuclein is determined by the interaction of oxidized catechols with a C-terminal sequence. *J. Biol. Chem.* **282**, 31621-31630.
- Mazzulli, J. R., Mishizen, A. J., Giasson, B. I., Lynch, D. R., Thomas, S. A., Nakashima, A., Nagatsu, T., Ota, A. and Ischiropoulos, H. (2006) Cytosolic catechols inhibit alpha-synuclein aggregation and facilitate the formation of intracellular soluble oligomeric intermediates. *J. Neurosci.* **26**, 10068-10078.
- Mexas, L. M., Florang, V. R. and Doorn, J. A. (2011) Inhibition and covalent modification of tyrosine hydroxylase by 3,4-dihydroxyphenylacetaldehyde, a toxic dopamine metabolite.

*Neurotoxicology* **32**, 471-477.

Molochnikov, L., Rabey, J. M., Dobronevsky, E. et al. (2012) A molecular signature in blood identifies early Parkinson's disease. *Molec. Neurodegen.* **7**, 26.

Monti, D. A., Zabrecky, G., Kremens, D. et al. (2019) N-Acetyl Cysteine Is Associated With Dopaminergic Improvement in Parkinson's Disease. *Clin. Pharmacol. Ther.*

Monti, D. A., Zabrecky, G., Kremens, D. et al. (2016) N-Acetyl cysteine may support dopamine neurons in Parkinson's disease: Preliminary clinical and cell line data. *PLoS One* **11**, e0157602.

Montine, T. J., Picklo, M. J., Amarnath, V., Whetsell, W. O., Jr. and Graham, D. G. (1997) Neurotoxicity of endogenous cysteinylcatechols. *Exp. Neurol.* **148**, 26-33.

Mor, D. E., Daniels, M. J. and Ischiropoulos, H. (2019) The usual suspects, dopamine and alpha-synuclein, conspire to cause neurodegeneration. *Mov. Disord.* **34**, 167-179.

Mor, D. E., Tsika, E., Mazzulli, J. R. et al. (2017) Dopamine induces soluble alpha-synuclein oligomers and nigrostriatal degeneration. *Nat. Neurosci.* **20**, 1560-1568.

Mosharov, E. V., Larsen, K. E., Kanter, E. et al. (2009) Interplay between cytosolic dopamine, calcium, and alpha-synuclein causes selective death of substantia nigra neurons. *Neuron* **62**, 218-229.

Munoz, P., Cardenas, S., Huenchuguala, S., Briceno, A., Couve, E., Paris, I. and Segura-Aguilar, J. (2015) DT-Diaphorase Prevents Aminochrome-Induced Alpha-Synuclein Oligomer Formation and Neurotoxicity. *Toxicol. Sci.* **145**, 37-47.

Munoz, P., Paris, I., Sanders, L. H., Greenamyre, J. T. and Segura-Aguilar, J. (2012) Overexpression of VMAT-2 and DT-diaphorase protects substantia nigra-derived cells against aminochrome neurotoxicity. *Biochim. Biophys. Acta* **1822**, 1125-1136.

Nagatsu, T. (1997) Isoquinoline neurotoxins in the brain and Parkinson's disease. *Neurosci. Res.* **29**, 99-111.

Nagatsu, T., Levitt, M. and Udenfriend, S. (1964) Tyrosine Hydroxylase. The Initial Step in Norepinephrine Biosynthesis. *J. Biol. Chem.* **239**, 2910-2917.



- Naoi, M., Riederer, P. and Maruyama, W. (2016) Modulation of monoamine oxidase (MAO) expression in neuropsychiatric disorders: genetic and environmental factors involved in type A MAO expression. *J Neural Transm (Vienna)* **123**, 91-106.
- Olanow, C. W., Rascol, O., Hauser, R. et al. (2009) A double-blind, delayed-start trial of rasagiline in Parkinson's disease. *N. Engl. J. Med.* **361**, 1268-1278.
- Panneton, W. M., Kumar, V. B., Gan, Q., Burke, W. J. and Galvin, J. E. (2010) The neurotoxicity of DOPAL: behavioral and stereological evidence for its role in Parkinson disease pathogenesis. *PLoS One* **5**, e15251.
- Paris, I., Lozano, J., Perez-Pastene, C., Munoz, P. and Segura-Aguilar, J. (2009) Molecular and neurochemical mechanisms in PD pathogenesis. *Neurotox. Res.* **16**, 271-279.
- Pham, C. L., Leong, S. L., Ali, F. E., Kenche, V. B., Hill, A. F., Gras, S. L., Barnham, K. J. and Cappai, R. (2009) Dopamine and the dopamine oxidation product 5,6-dihydroxyindole promote distinct on-pathway and off-pathway aggregation of alpha-synuclein in a pH-dependent manner. *J. Mol. Biol.* **387**, 771-785.
- Pintar, J. E., Barbosa, J., Francke, U., Castiglione, C. M., Hawkins, M., Jr. and Breakefield, X. O. (1981) Gene for monoamine oxidase type A assigned to the human X chromosome. *J Neurosci* **1**, 166-175.
- Plotegher, N., Berti, G., Ferrari, E. et al. (2017) DOPAL derived alpha-synuclein oligomers impair synaptic vesicles physiological function. *Sci. Rep.* **7**, 40699.
- Polymeropoulos, M. H., Lavedan, C., Leroy, E. et al. (1997) Mutation in the alpha-synuclein gene identified in families with Parkinson's disease. *Science* **276**, 2045-2047.
- Rees, J. N., Florang, V. R., Eckert, L. L. and Doorn, J. A. (2009) Protein reactivity of 3,4-dihydroxyphenylacetaldehyde, a toxic dopamine metabolite, is dependent on both the aldehyde and the catechol. *Chem. Res. Toxicol.* **22**, 1256-1263.
- Ritz, B. R., Paul, K. C. and Bronstein, J. M. (2016) Of pesticides and men: a California story of genes and environment in Parkinson's disease. *Curr. Environ. Health Rep.* **3**, 40-52.
- Saha, S., Khan, M. A. I., Mudhara, D. and Deep, S. (2018) Tuning the Balance between

Fibrillation and Oligomerization of alpha-Synuclein in the Presence of Dopamine. *ACS Omega* **3**, 14213-14224.

Sarafian, T. A., Yacoub, A., Kunz, A., Aranki, B., Serobyian, G., Cohn, W., Whitelegge, J. P. and Watson, J. B. (2019) Enhanced mitochondrial inhibition by 3,4-dihydroxyphenyl-acetaldehyde (DOPAL)-oligomerized alpha-synuclein. *J. Neurosci. Res.*

Segura-Aguilar, J. (2017) On the role of endogenous neurotoxins and neuroprotection in Parkinson's disease. *Neural Regen. Res.* **12**, 897-901.

Segura-Aguilar, J. (2019) On the role of aminochrome in mitochondrial dysfunction and endoplasmic reticulum stress in Parkinson's disease. *Front. Neurosci.* **13**, 271.

Shanks, N., Griffiths, J. and Anisman, H. (1994) Central catecholamine alterations induced by stressor exposure: analyses in recombinant inbred strains of mice. *Behav Brain Res* **63**, 25-33.

Shih, J. C., Chen, K. and Ridd, M. J. (1999) Monoamine oxidase: from genes to behavior. *Annu Rev Neurosci* **22**, 197-217.

Spillantini, M. G., Schmidt, M. L., Lee, V. M., Trojanowski, J. Q., Jakes, R. and Goedert, M. (1997) Alpha-synuclein in Lewy bodies. *Nature* **388**, 839-840.

Staal, R. G. and Sonsalla, P. K. (2000) Inhibition of brain vesicular monoamine transporter (VMAT2) enhances 1-methyl-4-phenylpyridinium neurotoxicity in vivo in rat striata. *J. Pharmacol. Exp. Ther.* **293**, 336-342.

Storch, A., Ott, S., Hwang, Y. I. et al. (2002) Selective dopaminergic neurotoxicity of isoquinoline derivatives related to Parkinson's disease: studies using heterologous expression systems of the dopamine transporter. *Biochem. Pharmacol.* **63**, 909-920.

Su, Y., Duan, J., Ying, Z., Hou, Y., Zhang, Y., Wang, R. and Deng, Y. (2013) Increased vulnerability of parkin knock down PC12 cells to hydrogen peroxide toxicity: the role of salsolinol and NM-salsolinol. *Neuroscience* **233**, 72-85.

Sugama, S., Sekiyama, K., Kodama, T., Takamatsu, Y., Takenouchi, T., Hashimoto, M., Bruno, C. and Kakinuma, Y. (2016) Chronic restraint stress triggers dopaminergic and

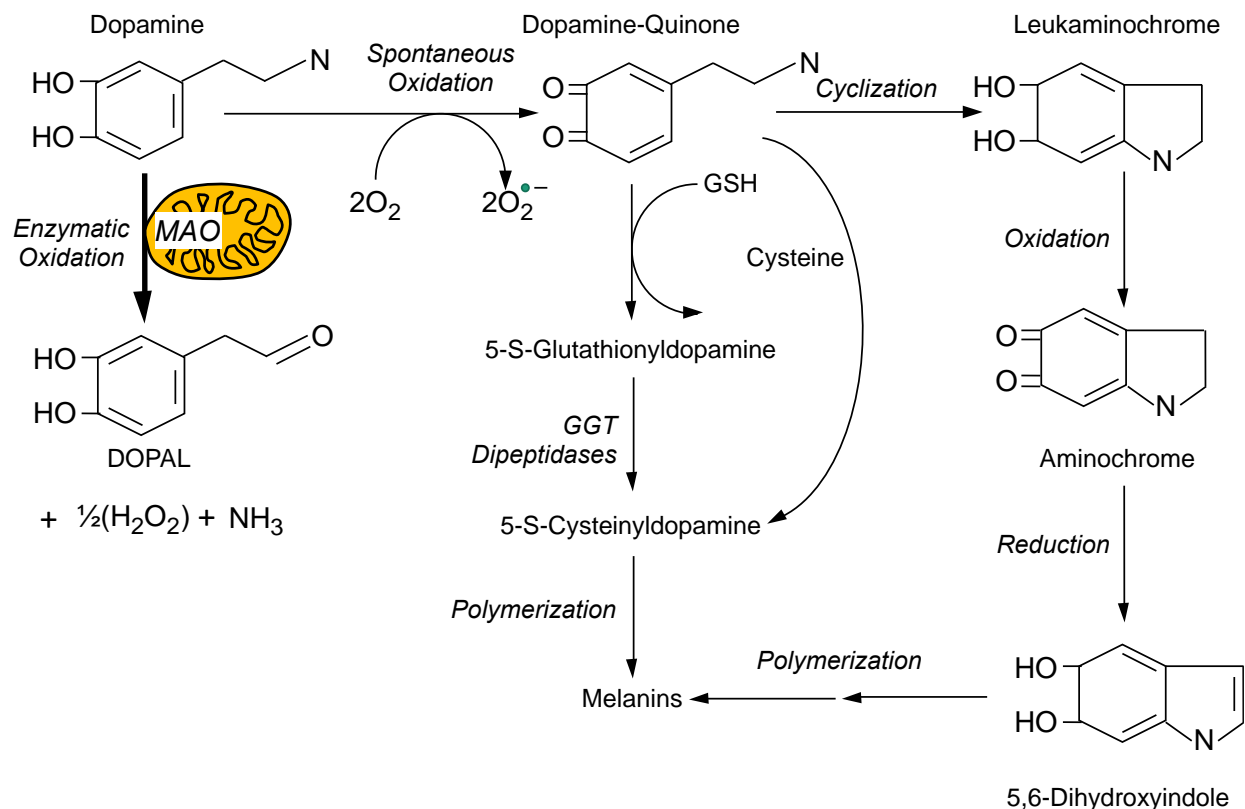
- noradrenergic neurodegeneration: Possible role of chronic stress in the onset of Parkinson's disease. *Brain Behav. Immun.* **51**, 39-46.
- Sun, J., He, C., Yan, Q. X. et al. (2021) Parkinson-like early autonomic dysfunction induced by vagal application of DOPAL in rats. *CNS Neurosci Ther* **27**, 540-551.
- Surh, Y. J. and Kim, H. J. (2010) Neurotoxic effects of tetrahydroisoquinolines and underlying mechanisms. *Exp Neurobiol* **19**, 63-70.
- Surmeier, D. J., Guzman, J. N., Sanchez-Padilla, J. and Goldberg, J. A. (2011) The origins of oxidant stress in Parkinson's disease and therapeutic strategies. *Antioxid. Redox Signal.* **14**, 1289-1301.
- Taylor, T. N., Alter, S. P., Wang, M., Goldstein, D. S. and Miller, G. W. (2014) Reduced vesicular storage of catecholamines causes progressive degeneration in the locus ceruleus. *Neuropharmacology* **76 Pt A**, 97-105.
- Valentino, R. J., Guyenet, P., Hou, X. H. and Herman, M. (2017) Central Network Dynamics Regulating Visceral and Humoral Functions. *J. Neurosci.* **37**, 10848-10854.
- van der Velden, L., Vinck, M., Werkman, T. R. and Wadman, W. J. (2017) Tuning of Neuronal Interactions in the Lateral Ventral Tegmental Area by Dopamine Sensitivity. *Neuroscience* **366**, 62-69.
- Vermeer, L. M., Florang, V. R. and Doorn, J. A. (2012) Catechol and aldehyde moieties of 3,4-dihydroxyphenylacetaldehyde contribute to tyrosine hydroxylase inhibition and neurotoxicity. *Brain Res.* **1474**, 100-109.
- Vizi, E. S. (1982) Non-synaptic intercellular communication: presynaptic inhibition. *Acta Biol Acad Sci Hung* **33**, 331-351.
- Wachtel, S. R. and Abercrombie, E. D. (1994) L-3,4-dihydroxyphenylalanine-induced dopamine release in the striatum of intact and 6-hydroxydopamine-treated rats: differential effects of monoamine oxidase A and B inhibitors. *J Neurochem* **63**, 108-117.
- Wakabayashi, K., Yoshimoto, M., Tsuji, S. and Takahashi, H. (1998) Alpha-synuclein immunoreactivity in glial cytoplasmic inclusions in multiple system atrophy. *Neurosci.*

*Lett.* **249**, 180-182.

- Ward, C. D. (1994) Does selegiline delay progression of Parkinson's disease? A critical re-evaluation of the DATATOP study. *J. Neurol. Neurosurg. Psychiatry* **57**, 217-220.
- Weingarten, P. and Zhou, Q. Y. (2001) Protection of intracellular dopamine cytotoxicity by dopamine disposition and metabolism factors. *J. Neurochem.* **77**, 776-785.
- Werner-Allen, J. W., DuMond, J. F., Levine, R. L. and Bax, A. (2016) Toxic dopamine metabolite DOPAL forms an unexpected dicatechol pyrrole adduct with lysines of alpha-synuclein. *Angew. Chem. Int. Ed. Engl.* **55**, 7374-7378.
- Werner-Allen, J. W., Levine, R. L. and Bax, A. (2017) Superoxide is the critical driver of DOPAL autoxidation, lysyl adduct formation, and crosslinking of alpha-synuclein. *Biochem. Biophys. Res. Commun.* **487**, 281-286.
- Werner-Allen, J. W., Monti, S., DuMond, J. F., Levine, R. L. and Bax, A. (2018) Isoindole linkages provide a pathway for DOPAL-mediated cross-linking of alpha-synuclein. *Biochemistry* **57**, 1462-1474.
- Wey, M., Fernandez, E., Martinez, P. A., Sullivan, P., Goldstein, D. S. and Strong, R. (2012) Neurodegeneration and motor dysfunction in mice lacking cytosolic and mitochondrial aldehyde dehydrogenases: Implications for Parkinson's disease. *PLoS ONE* **7**, e31522.
- Winner, B., Jappelli, R., Maji, S. K. et al. (2011) In vivo demonstration that alpha-synuclein oligomers are toxic. *Proc. Natl. Acad. Sci. U.S.A.* **108**, 4194-4199.
- Wu, Y. N. and Johnson, S. W. (2011) Dopamine oxidation facilitates rotenone-dependent potentiation of N-methyl-D-aspartate currents in rat substantia nigra dopamine neurons. *Neuroscience* **195**, 138-144.
- Youdim, M. B., Collins, G. G. and Sandler, M. (1969) Multiple forms of rat brain monoamine oxidase. *Nature* **223**, 626-628.
- Youdim, M. B. and Sandler, M. (1968) Activation of monoamine oxidase and inhibition of aldehyde dehydrogenase by reserpine. *Eur. J. Pharmacol.* **4**, 105-107.

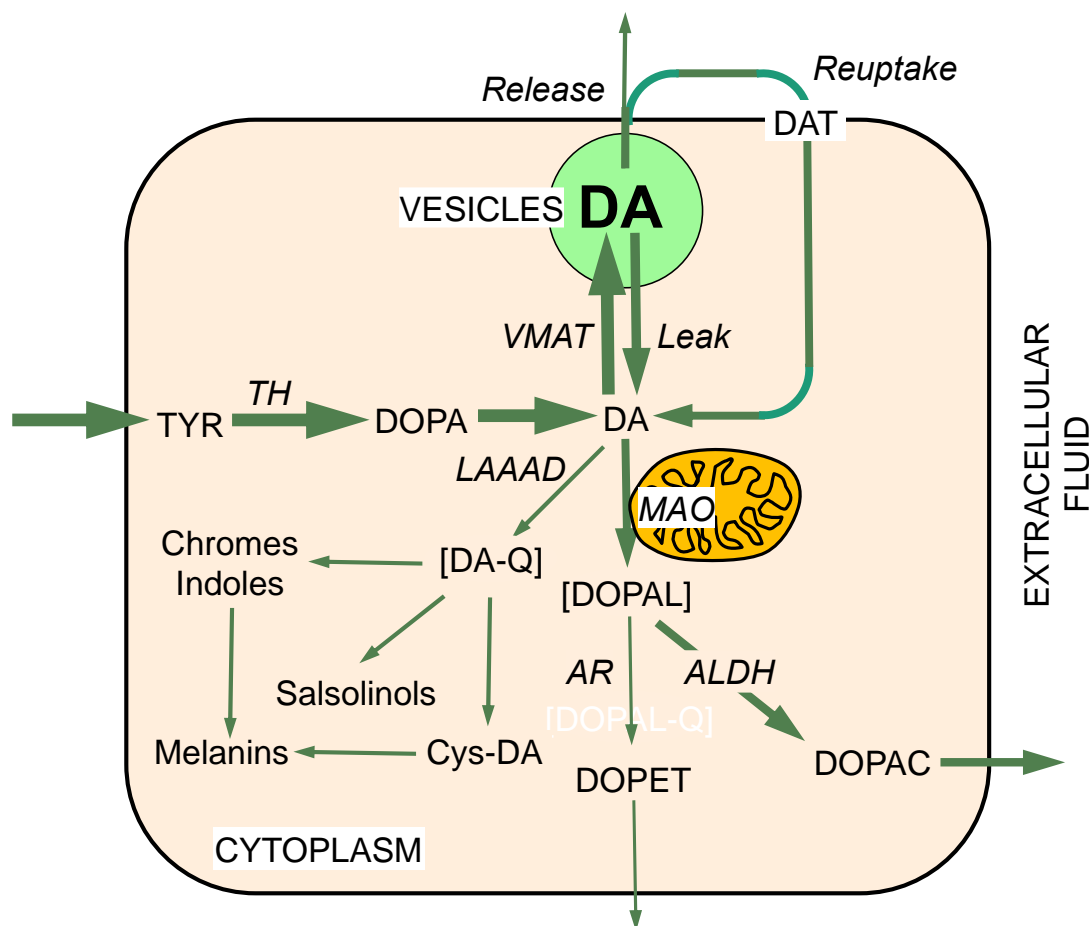
## FIGURES AND FIGURE LEGENDS

**Figure 1: Enzymatic and spontaneous oxidation of dopamine.**



Monoamine oxidase (MAO) in the outer mitochondrial membrane converts dopamine to 3,4-dihydroxyphenylacetaldehyde (DOPAL), ammonia, and hydrogen peroxide. Dopamine oxidizes spontaneously to dopamine-quinone, generating superoxide radical. Dopamine-quinone can react with GSH to form glutathionyl dopamine, which in the presence of gamma-glutamyl transferase (GGT) and dipeptidases results in formation of 5-S-cysteinyl dopamine (Cys-DA). Cys-DA can also be produced by dopamine quinone reacting with cysteine. Cyclization of dopamine-quinone produces leukaminochrome, which can be oxidized to form aminochrome. Reduction of aminochrome yields the indole 5,6-dihydroxyindole. Melanins are formed from polymerization of Cys-DA or 5,6-dihydroxyindole. The relatively thick arrow corresponding to MAO is used to denote that given the alternative spontaneous vs. enzyme-catalyzed oxidation of cytoplasmic dopamine, the enzymatic route would predominate; however, MAO inhibition could increase the

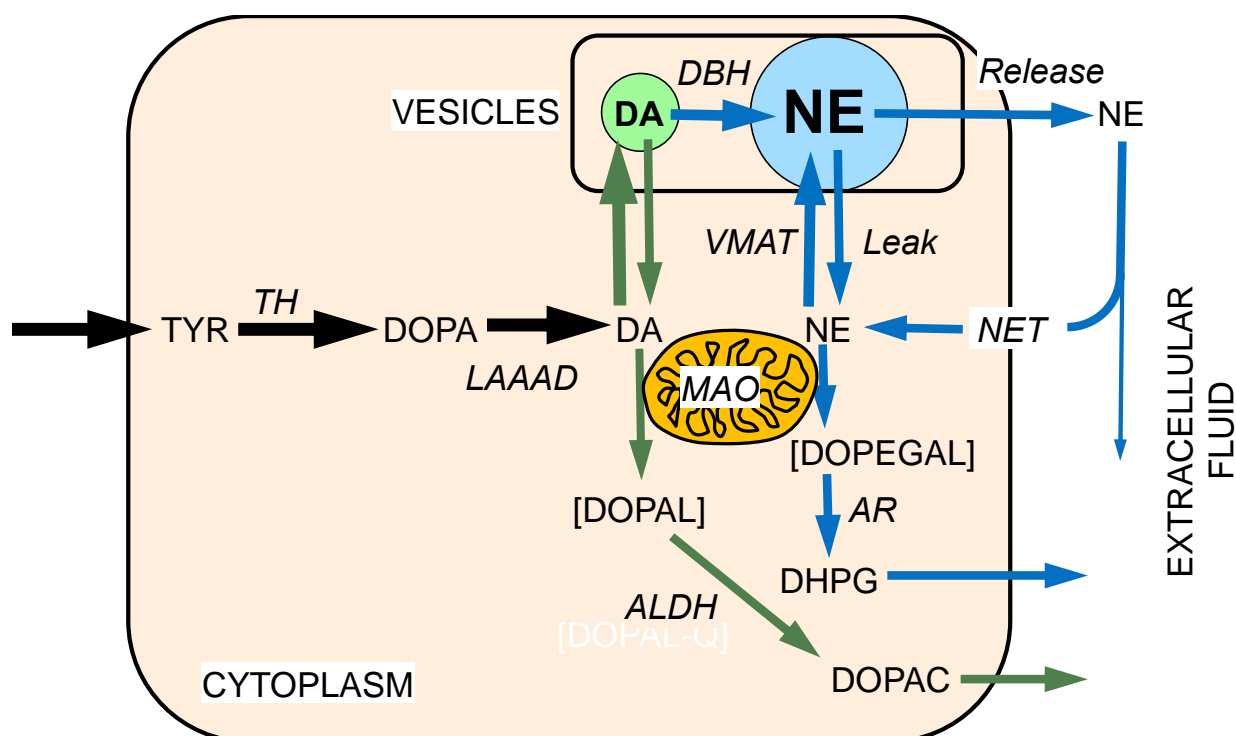
formation of spontaneous oxidation products.

**Figure 2: Dopamine synthesis, storage, reuptake, and metabolism**

Dopamine (DA) is produced in the neuronal cytoplasm via tyrosine hydroxylase (TH) acting on tyrosine to form 3,4-dihydroxyphenylalanine (DOPA) and then L-aromatic-amino-acid decarboxylase (LAAAD) acting on DOPA to form dopamine. Most of cytoplasmic DA is taken up into vesicles by way of the vesicular monoamine transporter (VMAT). This is balanced by passive leakage from the vesicles into the cytoplasm. Cytoplasmic DA is subject to oxidative deamination catalyzed by monoamine oxidase-A (MAO-A) in the outer mitochondrial membrane to form 3,4-dihydroxyphenylacetaldehyde (DOPAL). DOPAL is converted to 3,4-dihydroxyphenylacetic acid (DOPAC) via aldehyde dehydrogenase (ALDH). A minor pathway is via aldehyde/aldose reductase (AR) to form 3,4-dihydroxyphenylethanol (DOPET). Most of vesicular DA released by exocytosis is taken back up into the cytoplasm via the cell membrane dopamine transporter (DAT). DA can undergo spontaneous oxidation to DA-quinone (DA-Q),

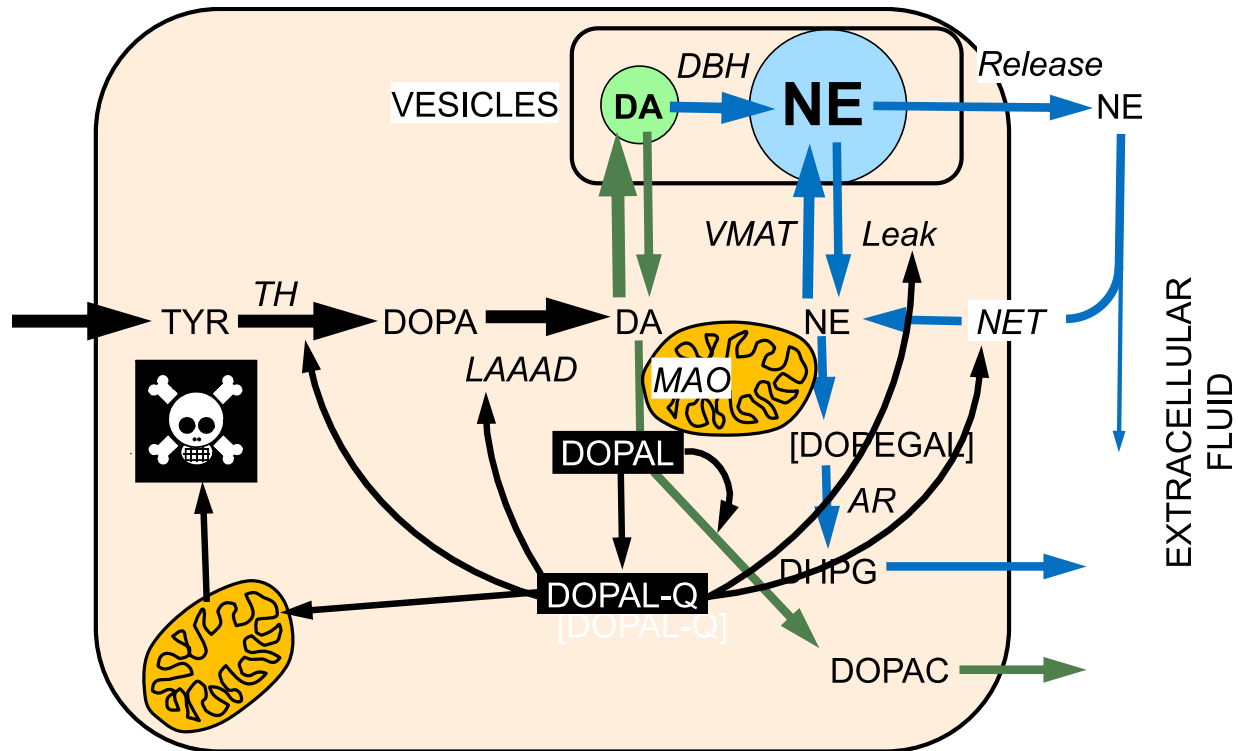
resulting in formation of a variety of oxidation products including 5-S-cysteinyl dopamine (Cys-DA).



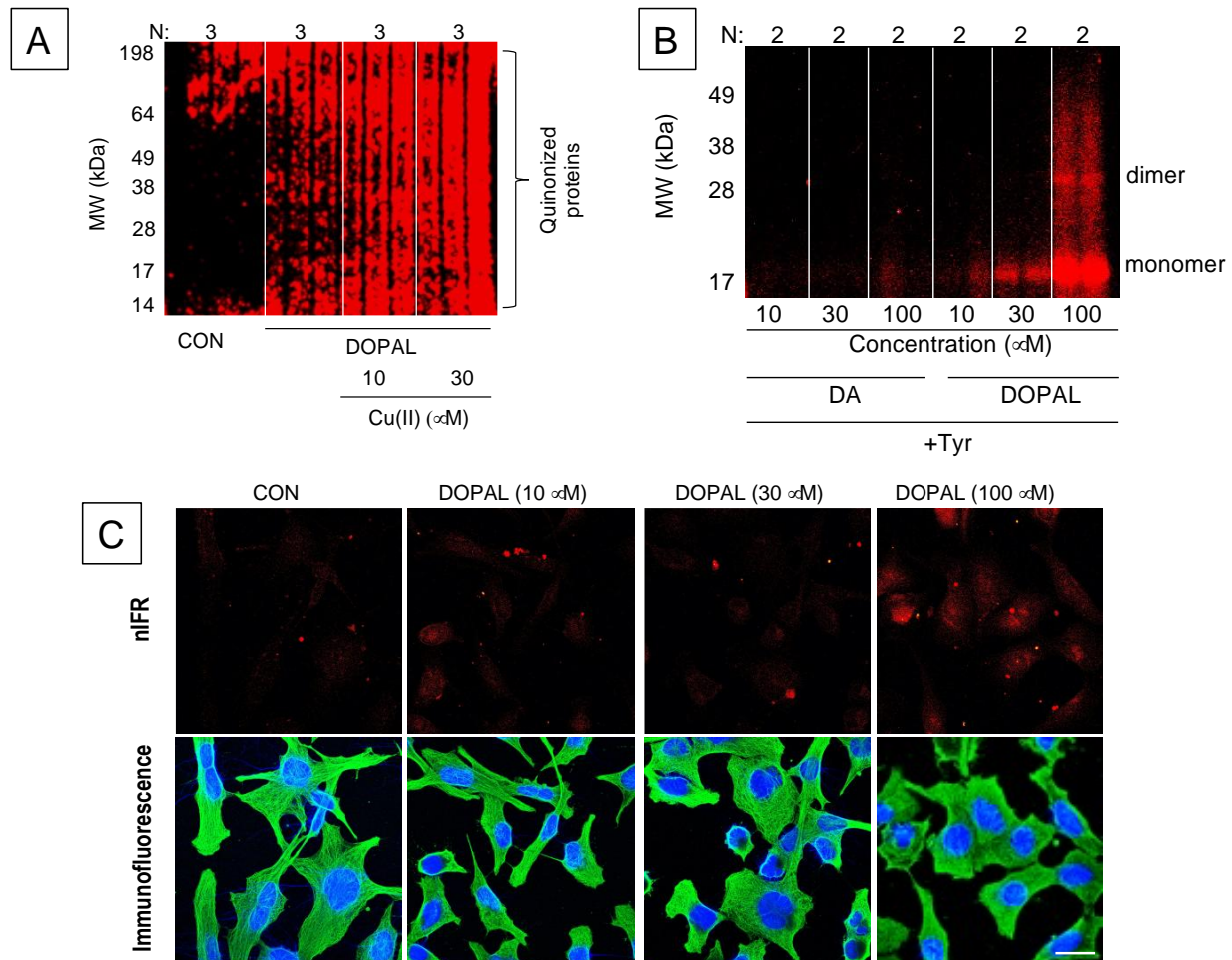
**Figure 3: Norepinephrine synthesis, storage, reuptake, and metabolism**

In noradrenergic neurons dopamine (DA) is produced in the cytoplasm as in dopaminergic neurons. Dopamine-beta-hydroxylase (DBH) in the vesicles catalyzes the production of norepinephrine (NE) from DA. As for DA, cytoplasmic NE is subject to oxidative deamination catalyzed by monoamine oxidase-A (MAO-A) in the outer mitochondrial membrane, to form 3,4-dihydroxyphenylglycolaldehyde (DOPEGAL). It should be noted that NE is a poorer substrate than DA for MAO of either isoform. DOPEGAL is converted to 3,4-dihydroxyphenylglycol (DHPG) via aldehyde/aldose reductase (AR). A minor pathway (not shown) involves conversion of DOPEGAL to dihydroxymandelic acid via aldehyde dehydrogenase. As for DA, most of vesicular NE released by exocytosis is taken back up into the cytoplasm via a cell membrane transporter—the cell membrane norepinephrine transporter (NET) for NE (although DA is a better substrate than NE for uptake via the NET). Theoretically, NE can be oxidized spontaneously to NE-quinone and downstream oxidation products.

**Figure 4: Intra-neuronal effects of DOPAL buildup.**



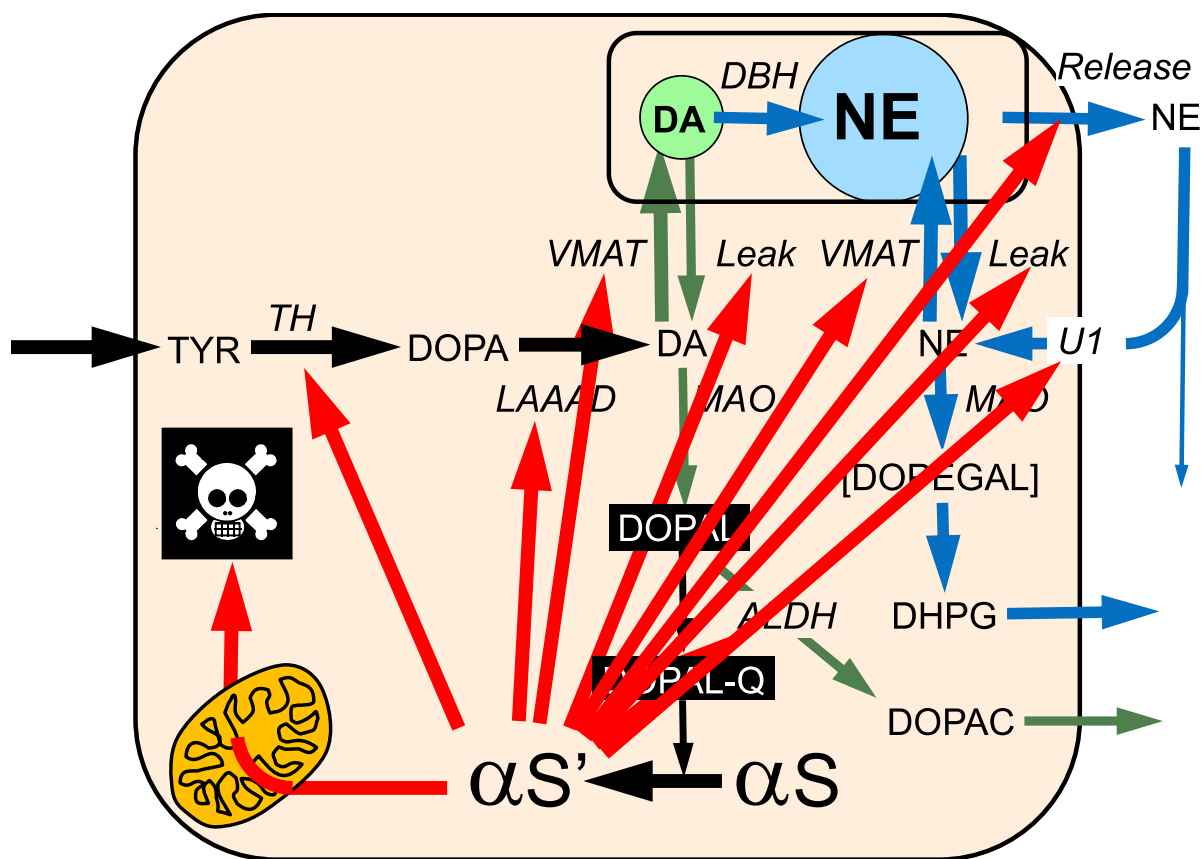
DOPAL buildup in the neuronal cytoplasm may exert numerous harmful effects. These can be classified in terms of cytotoxicity via adverse effects on mitochondria and abnormalities from protein modifications, probably mediated by DOPAL-quinone (DOPAL-Q). For instance, DOPAL inhibits tyrosine hydroxylase (TH) and L-aromatic-amino-acid decarboxylase (LAAAD). DOPAL can interfere its own detoxification by inhibiting aldehyde dehydrogenase (ALDH). DOPAL also decreases the storage of catecholamines in vesicles, by inhibiting the cell membrane norepinephrine transporter (NET) or the vesicular monoamine transporter (VMAT) or permeabilizing vesicles.

**Figure 5: Intra-cellular quinoproteins produced by DOPAL.**

A: DOPAL-induced quinonization of intracellular proteins in MO3.13 human cultured oligodendrocytes. MO3.13 cells ( $1.5 \times 10^5$  cells/well) were exposed to (A) DOPAL (100 μM) with or without Cu(II) (10 and 30 μM) for 24 hours. DOPAL-quinonized proteins were detected and quantified by infrared fluorescence (nIRF) spectroscopy (red). N=number of replicates. DOPAL quinonized myriad intracellular proteins. Cu(II) augmented this effect. B: Comparisons of DA- vs. DOPAL-induced alpha-synuclein ( $\alpha$ S) quinonization. Quinonized  $\alpha$ S was detected by near infrared fluorescence (nIRF) spectroscopy (red). Even in the presence of tyrosinase (Tyr) to oxidize DA, DA did not quinonize  $\alpha$ S. C: Visualization of intracellular DOPAL-induced

quinoproteins. MO3.13 cells were cultured in slide chambers ( $8 \times 10^4$  cells/slides) for 24 hours and treated with Cu(II) (30  $\mu$ M) and 0-100  $\mu$ M DOPAL for 5 hours. Cells were then stained with DAPI (1:2000) (blue) and human tubulin antibody (1:1500) (green). Immunofluorescence and near infrared fluorescence (nIRF) were visualized microscopically. Scale bar in images is 20  $\mu$ m. Treatment with DOPAL produced nIRF signals, indicating the presence of quinoproteins. Images are from (Jinsmaa *et al.* 2020).

**Figure 6: Effects of DOPAL-induced modification of alpha-synuclein ( $\alpha$ S).**



Among myriad protein modifications exerted by DOPAL one of the most prominent is oligomerization of, formation of quinone-protein adducts with (“quinonization”), and aggregation of  $\alpha$ S. DOPAL-induced  $\alpha$ S oligomers interfere with vesicular functions and are toxic to mitochondria. Note shown,  $\alpha$ S may increase DOPAL formation via stimulation of MAO activity. The relative roles of DOPAL alone,  $\alpha$ S alone, and their interactions in catecholaminergic neurodegeneration is poorly understood. It is also possible that  $\alpha$ S and DOPAL emanating from catecholaminergic neurons can be taken up into non-neuronal glial cells and harm the neurons indirectly via altered glial functions.

## **ACKNOWLEDGEMENT**

Research reported in this review was supported (in part) by the Intramural Research Program of the NIH, NINDS