

## Supplementary Figures

# Macrophage-Derived Small Exosomes: Efficient Transmission and Cytotoxicity to Cancer Cells

Yanyin Lu <sup>1,2</sup>, Takanori Eguchi <sup>1,3,\*</sup>, Chiharu Sogawa <sup>1,4</sup>, Eman A. Taha <sup>1,5,6</sup>, Toshiki Nara <sup>7</sup>,  
Manh Tien Tran <sup>1</sup>, Penggong Wei <sup>1,8</sup>, Shiro Fukuoka <sup>1,9</sup>, Takuya Miyawaki <sup>2</sup>, Kuniaki  
Okamoto <sup>1</sup>

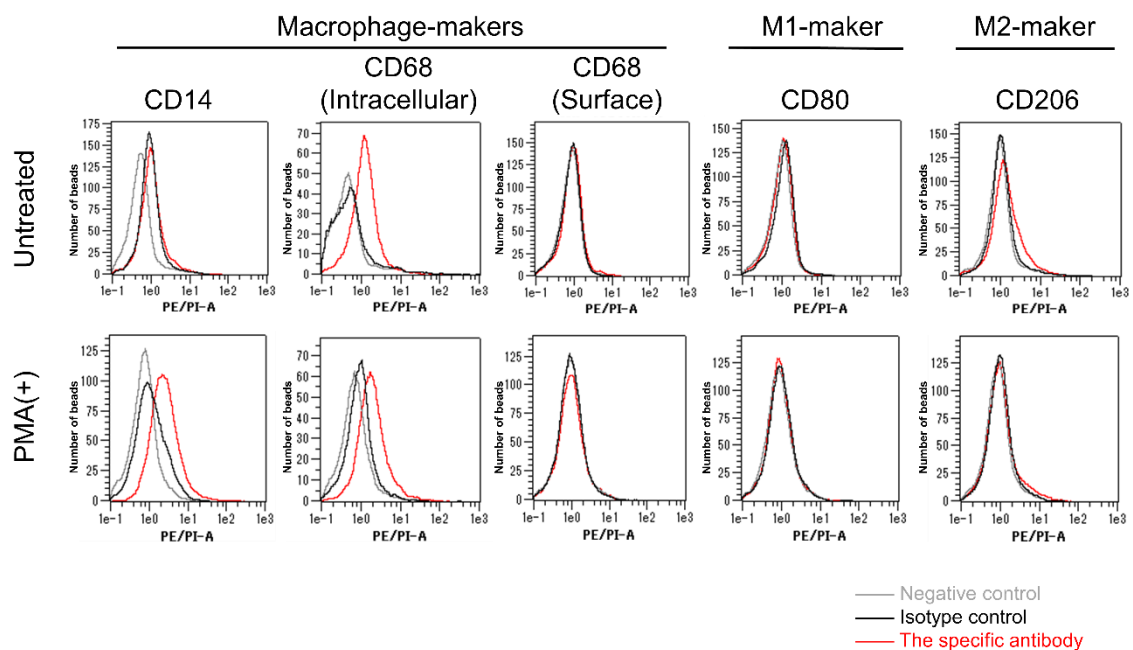


Figure S1: flow cytometry of CD14, CD68, CD80, and CD206 in PMA-treated and untreated THP-1 cells.

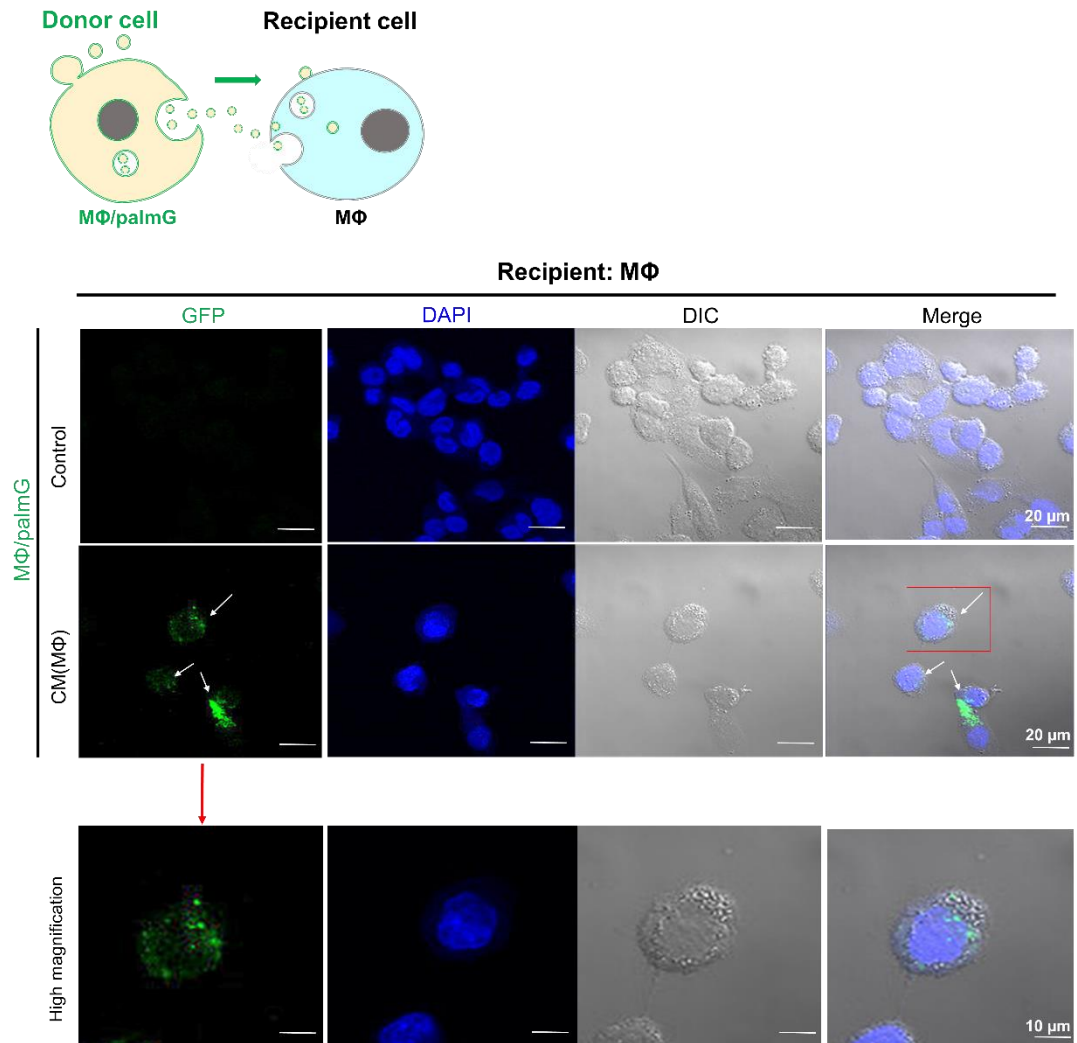
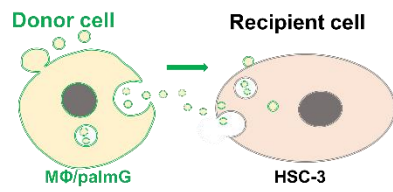
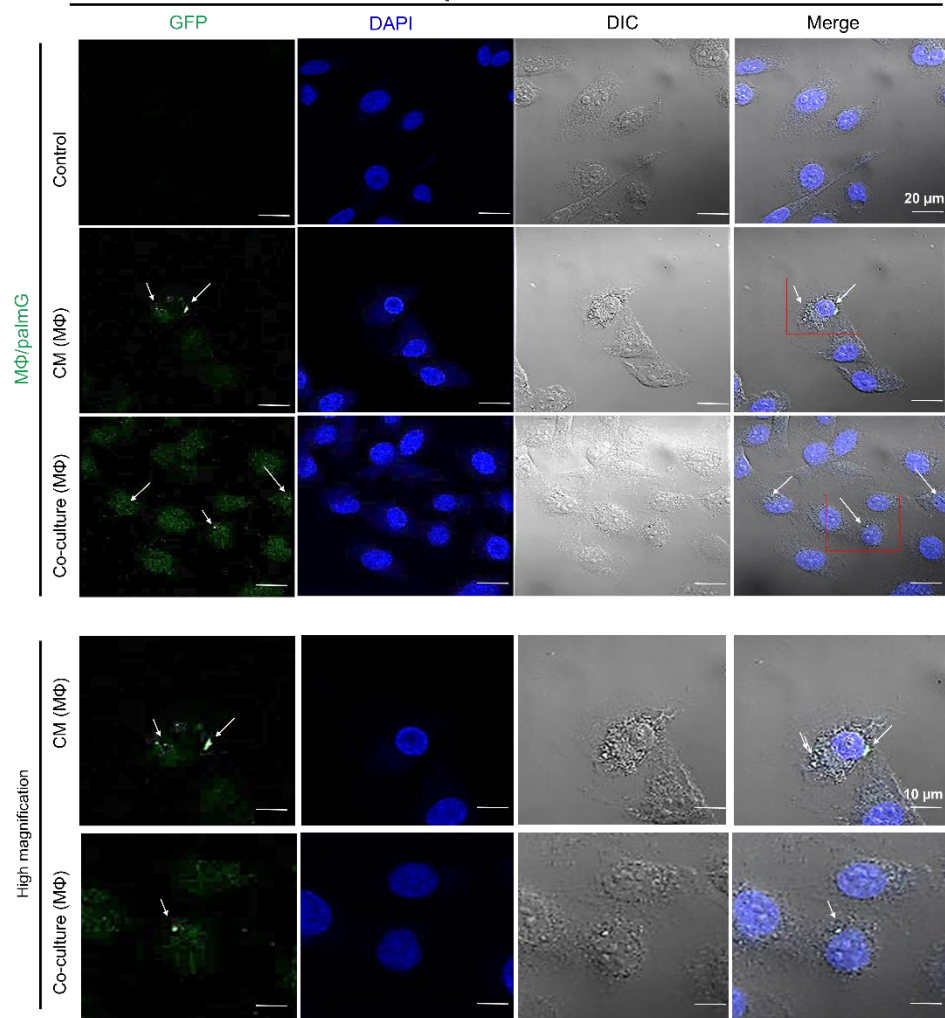
**A**

Figure S2: confocal microscopy of the transmission of macrophage-derived fluorescent EVs. (A) EV recipient cells were macrophages. (B) EV recipient cells were HSC-3 oral cancer cells.

**B****Recipient: HSC-3**

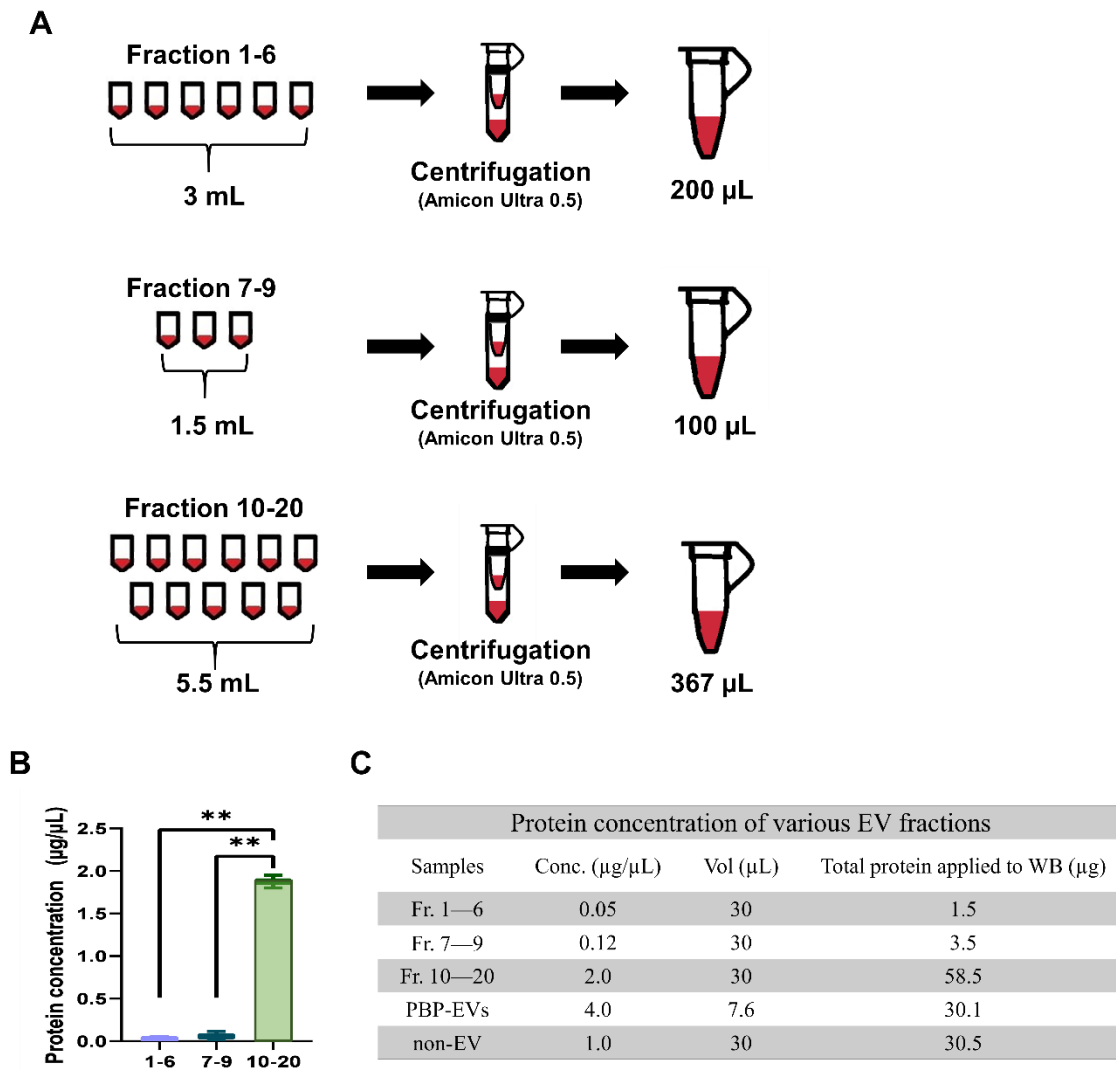
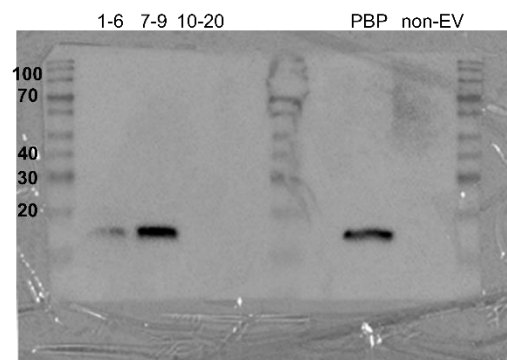
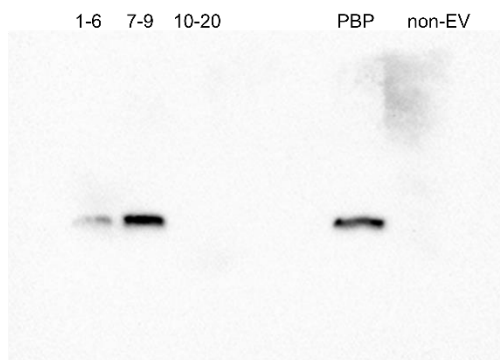
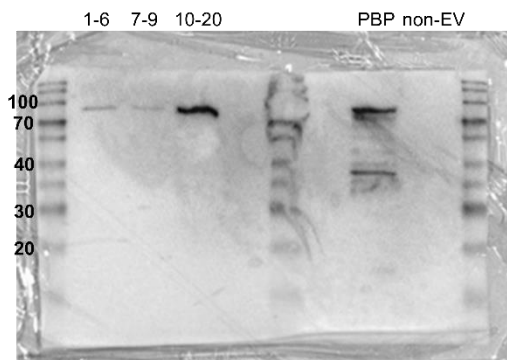
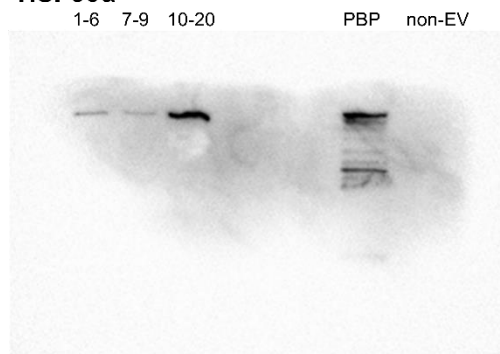


Figure S3: preparation of Fr. 1-6, Fr. 7-9, and Fr. 10-20 from the SEC method. (A) Fr. 1-6 were gathered into a single tube and then concentrated using ultrafiltration. Fr. 7-9 and Fr.10-20 were also concentrated by the same method. (B) Protein concentrations in the the fraction 1-6, 7-9, and 10-20. N=2. \*\*P<0.01. (C) A table showing the protein concentrations of the fractions and protein amount applied in western blotting.

### CD 9



### HSP90α



### β-actin

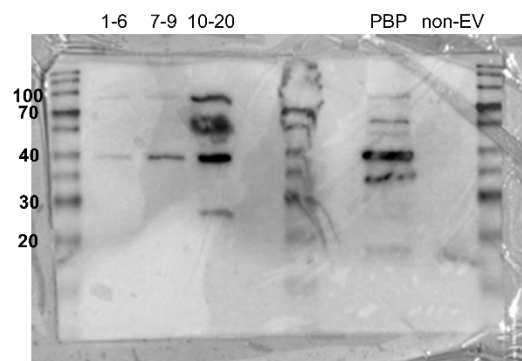
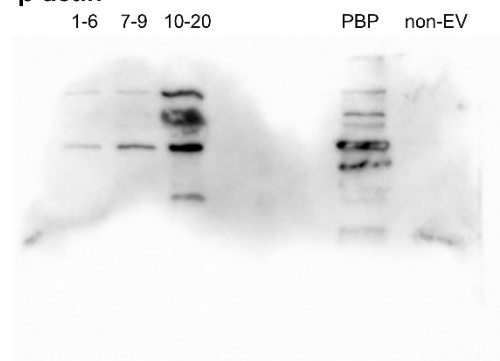
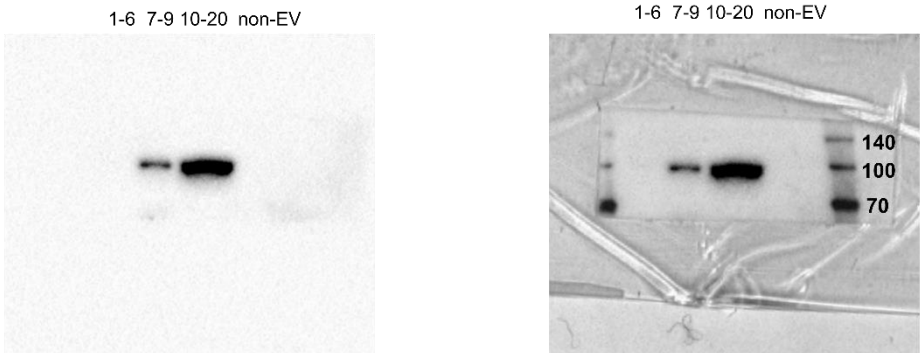
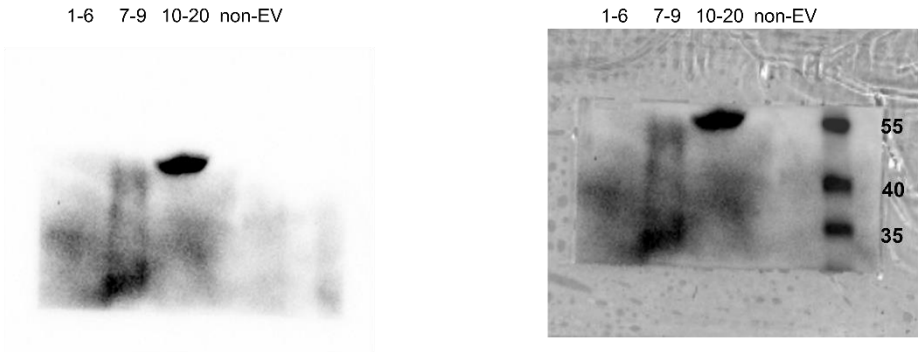


Figure S4: full images of western blot analysis shown in Figure 5H

**HSP90β**



**CD63**



**CD9**



Figure S5: full images of western blot analysis shown in Figure 5I.