

SUPPLEMENTARY FIGURES and LEGENDS

Conditional loss of the exocyst component Exoc5 in retinal pigment epithelium (RPE) results in RPE dysfunction, photoreceptor cell degeneration, and decreased visual function.

Bärbel Rohrer^{1,2#}, Elisabeth Obert¹, Yujing Dang³, Yanhui Su³, Xiaofeng Zuo³, Ben Fogelgren⁴, Manas R. Biswal⁵, Altaf A. Kondkar⁶, Glenn P. Lobo^{1,3,7*#} and Joshua H. Lipschutz^{1,8#}

¹Department of Ophthalmology, Medical University of South Carolina, Charleston, SC, 29425, USA.

²Ralph H. Johnson VA Medical Center, Division of Research, Charleston, SC 29401. ³Department of Medicine, Medical University of South Carolina, Charleston, SC, 29425, USA. ⁴

Department of Anatomy, Biochemistry, and Physiology, University of Hawaii at Manoa, Honolulu, HI 96813, USA.

⁵Department of Pharmaceutical Sciences, Taneja College of Pharmacy, University of South Florida, Tampa, FL 33612, USA.

⁶Department of Ophthalmology, College of Medicine, King Saud University, Riyadh 11411, Saudi Arabia.

⁷Department of Ophthalmology and Visual Neurosciences. Lions Research Building, 2001 6th Street SE., Room 225, University of Minnesota, Minneapolis, MN 55455, USA.

⁸Department of Medicine, Ralph H. Johnson Veterans Affairs Medical Center, Charleston SC, 29425, USA.

***Corresponding Author:** Glenn P. Lobo, Ph.D., Associate Professor, Department of Ophthalmology and Visual Neurosciences, Lions Research Building, 2001 6th Street SE., Room LRB 225 University of Minnesota Minneapolis, MN 55455, USA. E-mail: lobo0023@umn.edu.

equally supervised this work

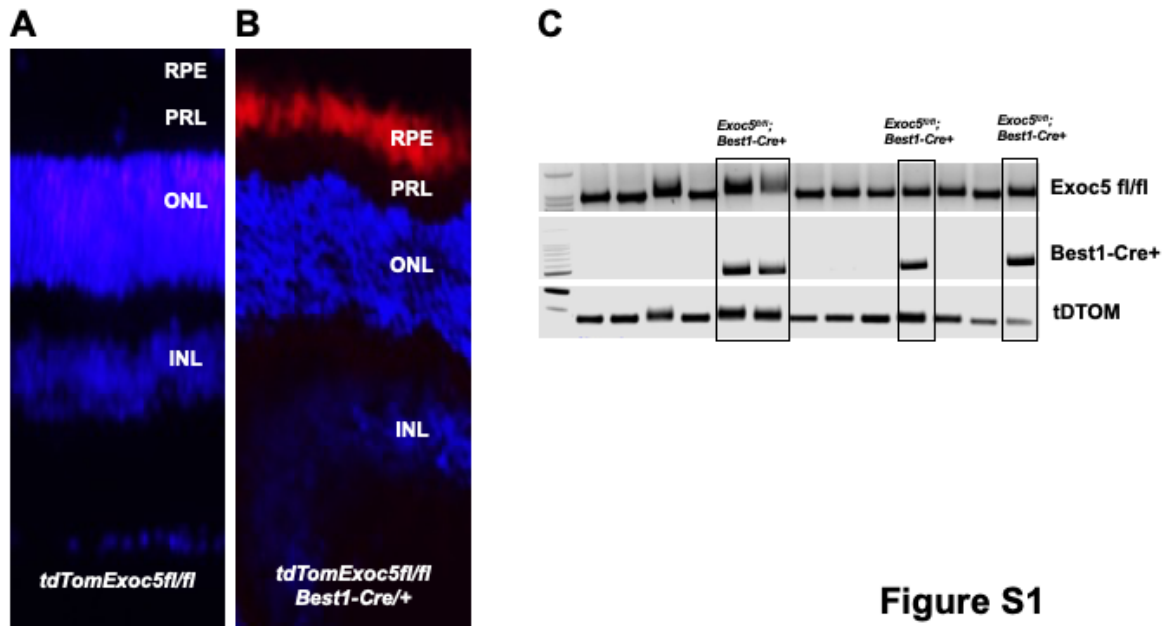


Figure S1

Supplementary Fig. S1: Generation of *tdTomatoExoc5fl/fl* mice and genotyping for conditional *tdTomatoExoc5fl/fl;Best1-Cre⁺* mice. (A) No tdTomato expression (red) was seen in *tdTomatoExoc5fl/fl* mice, (B) while tdTomato expression (red color in RPE) occurred in *tdTomato Exoc5fl/fl;Best1-Cre/+* mice, confirming conditional loss of EXOC5 in RPE cells. (C) PCR based genotyping for identification of control *tdTomatoExoc5fl/fl* and experimental *tdTomatoExoc5fl/fl;Best1-Cre/+* mice.

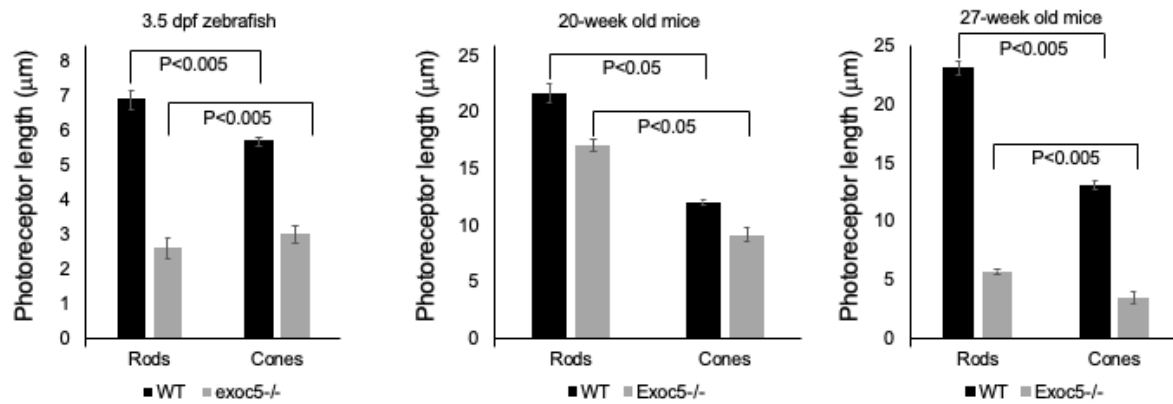


Figure S2

Supplementary Fig. S2: Quantification of photoreceptor lengths. (A) 3.5 days post fertilization (dpf) zebrafish, (B) 20-week old *Exoc5*^{-/-} and WT mice, and (C) 27-week old *Exoc5*^{-/-} and WT mice.

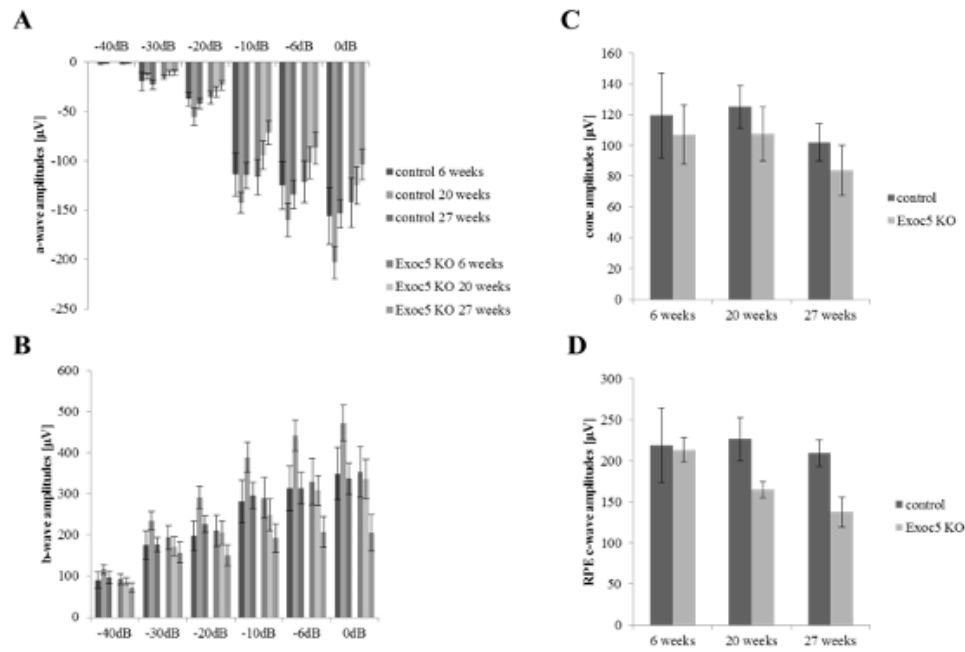


Figure S3

Supplementary Fig. S3: Measurement of visual function in *Exoc5*^{fl/fl};*Best1*-*Cre*⁺ mice by full-field Electroretinography (ERG) and c-wave function. Data are expressed as mean ± SEM (*Exoc5*^{fl/fl};*Best1*-*Cre*⁻: n=10; and *Exoc5*^{fl/fl};*Best1*-*Cre*⁺ mice: n=10).