

Review

# Lignins Isolated via Catalyst-free Organosolv Pulping from *Miscanthus x giganteus*, *M. sinensis*, *M. robustus* and *M. nagara*: A Comparative Study

Michel Bergs<sup>1,2</sup>, Yulia Monakhova<sup>2,3</sup>, Bernd W. Diehl<sup>2</sup>, Christopher Konow<sup>4</sup>, Georg Völkerling<sup>5</sup>, Ralf Pude<sup>5,6</sup>, and Margit Schulze<sup>1,\*</sup>

<sup>1</sup> Department of Natural Sciences, Bonn-Rhein-Sieg University of Applied Sciences, von-Liebig-Strasse 20, D-53359 Rheinbach, Germany [margit.schulze@h-brs.de](mailto:margit.schulze@h-brs.de) (M.S.)

<sup>2</sup> Spectral Service AG, Emil-Hoffmann-Strasse 33, D-50996 Köln, Germany; [michel.bergs@spectral-service.de](mailto:michel.bergs@spectral-service.de) (M.B.); [yulia.monakhova@spectral-service.de](mailto:yulia.monakhova@spectral-service.de) (Y.M.); [bernd.diehl@spectral-service.de](mailto:bernd.diehl@spectral-service.de) (B.D.)

<sup>3</sup> Institute of Chemistry, Saratov State University, Astrakhanskaya Street 83, 410012 Saratov, Russia

<sup>4</sup> Department of Chemistry, MS 015, Brandeis University, 415 South Street, Waltham, Massachusetts, U.S.; [ckonow@brandeis.edu](mailto:ckonow@brandeis.edu) (C.K.)

<sup>5</sup> Institute of Crop Science and Resource Conservation (INRES), Faculty of Agriculture, University of Bonn, Klein-Altendorf 2, D-53359 Rheinbach, Germany; [g.voelkerling@uni-bonn.de](mailto:g.voelkerling@uni-bonn.de) (G.V.)

<sup>6</sup> Field Lab Campus Klein-Altendorf, Faculty of Agriculture, University of Bonn, Campus Klein-Altendorf 1, D-53359 Rheinbach, Germany; [r.pude@uni-bonn.de](mailto:r.pude@uni-bonn.de) (R.P.)

\* Correspondence: [margit.schulze@h-brs.de](mailto:margit.schulze@h-brs.de) (M.S.); Tel.: +49-2241-865566

**Abstract:** As a low-input crop, *Miscanthus* offers numerous advantages that, in addition to agricultural applications, permits its exploitation for energy, fuel, and material production. Depending on the *Miscanthus* genotype, season, and harvest time as well as plant component (leaf *versus* stem), correlations between structure and properties of the corresponding isolated lignins differ. Here, a comparative study is presented between lignins isolated from *M. x giganteus*, *M. sinensis*, *M. robustus* and *M. nagara* using a catalyst-free organosolv pulping process. The lignins from different plant constituents are also compared regarding their similarities and differences regarding monolignol ratio and important linkages. Results showed that the plant genotype has the weakest influence on monolignol content and interunit linkages. In contrast, structural differences are more significant among lignins of different harvest time and/or season. Analyses were performed using fast and simple methods such as nuclear magnetic resonance (NMR) spectroscopy. Data was assigned to four different linkages (A:  $\beta$ -O-4 linkage, B: phenylcoumaran, C: resinol, D:  $\beta$ -unsaturated ester). In conclusion, A content is particularly high in leaf-derived lignins at just under 70 % and significantly lower in stem and mixture lignins at around 60 % and almost 65 %. The second most common linkage pattern is D in all isolated lignins, the proportion of which is also strongly dependent on the crop portion. Both stem and mixture lignins, have a relatively high share of approximately 20 % or more (maximum is *M. sinensis* Sin2 with over 30 %). In the leaf-derived lignins, the proportions are significantly lower on average. Stem samples should be chosen if the highest possible lignin content is desired, specifically from the *M. x giganteus* genotype, which revealed lignin contents up to 27 %. Due to the better frost resistance and higher stem stability, *M. nagara* offers some advantages compared to *M. x giganteus*. *Miscanthus* crops are shown to be very attractive lignocellulose feedstock (LCF) for second generation biorefineries and lignin generation in Europe.

**Keywords:** *Miscanthus x giganteus*; *Miscanthus sinensis*; *Miscanthus robustus*; *Miscanthus nagara*; lignin; monolignol ratio; low-input crops

## 1. Introduction

Very recently, the first thirty tons of miscanthus grass were enzymatically processed into lignocellulosic sugar and ethanol in a pre-commercial lignocellulose biorefinery [1-3]. The test run

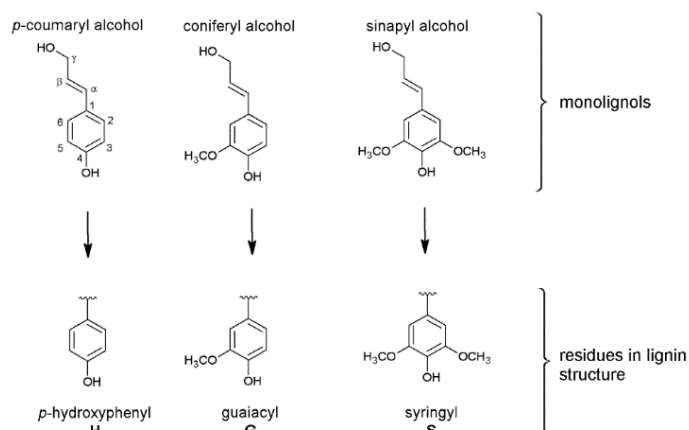
was part of the EU-funded project "GRACE" (GRowing Advanced industrial Crops on marginal lands for bioRefineries), a milestone for the development of second-generation biorefineries [4,5]. The results of the GRACE project emphasize the industrial suitability of the underlying technology for lignocellulose sugar production. Besides sugar production, *Miscanthus*-derived lignins are of potential interest as a building block for chemicals production [6,7]. Recent efforts provide an impetus for the further development of a bio-based value chain and a European bioeconomic circular economy under commercial conditions [8].

*Miscanthus* is a perennial rhizome-forming grass species from the sweet grass family (*Poaceae*). It is native to subtropical and tropical regions and comes originally from Asia. The rhizome represents the horizontally growing underground storage and wintering organ. From this, tightly clumped shoots are formed as is typical for sweet grasses [9,10]. To expand the genetic base and maximize the productivity and adaptive range of the cultures, the triploid hybrid genotype *Miscanthus x giganteus* (a cross between a diploid form of *M. sinensis* and a tetraploid form of *M. sacchariflorus*) has received increased attention both in Asia and Europe [11,12]. As a result of its hybrid genotype, *M. x giganteus* shows characteristics of both types of origin. *M. x giganteus* reaches heights of up to four meters each year and can be harvested for at least 15-20 years. Combined with a high density of shoots, this leads to very high annual production yields (approximately 25 t/ha) depending on the bioclimatic situation [13,14]. It is a sterile genotype, which makes uncontrolled spreading impossible [15]. Moreover, *Miscanthus* crops grow even on contaminated and abandoned soils. It is also ecologically and economically advantageous that the plants do not require fertilizers annually or to be treated with pesticides [16]. The typical harvest time of *Miscanthus* starts with the senescence of the plant in later winter. This advantageously coincides with a low moisture content (15-20%) in the plant [17]. In 2017, the European Commission decided to list *Miscanthus* as a potential crop for greening measures that will have an impact on the cultivation of this crop in many European countries [18,19].

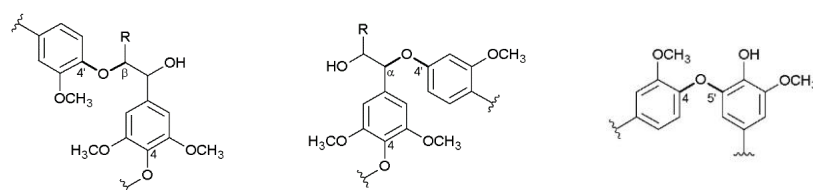
In contrast to most plants, which use the C3 photosynthetic pathway, *Miscanthus* shows the C4 photosynthetic pathway. C4 plants have a high rate of CO<sub>2</sub> fixation, which enables increased photosynthesis [20]. Although C4 plants only make up approx. 5% of the world's biomass, they provide approx. 23% of the fixation of CO<sub>2</sub> [21]. C4 plants generate oxaloacetate (in contrast to D-3 phosphoglycerate from C3 plants) by fixing four carbon atoms. As a result, C4 plants grow very quickly. They have a very low compensation point, so they continue photosynthesis at high light intensity when only low CO<sub>2</sub> concentrations are available. In addition, the rate of photorespiration in C4 plants is significantly lower than in C3 plants, since the concentration of O<sub>2</sub> in relation to CO<sub>2</sub> in the cells of the C4 plants that are responsible for photosynthesis (mesophyll cells) is vanishingly small. This almost completely suppresses the respiration caused by O<sub>2</sub> [22].

Significant research has previously been performed to elucidate both the composition and optimal decomposition conditions of various *Miscanthus* genotypes. Van der Weijde *et al.* examined eight genotypes of *M. sinensis* with different cell wall composition profiles [23]. A study including 25 *Miscanthus* genotypes was reported by da Costa *et al.*, which also included the cell wall composition of *M. x giganteus*, *M. sacchariflorus*, *M. sinensis*, and various hybrids [24]. Other studies focused the crop yield: Iqbal *et al.* examined 15 *Miscanthus* genotypes (*M. sinensis*, *M. sacchariflorus*, *M. x giganteus* and hybrids) harvested at different times of the year (November and between January and April) over a period of five years. The harvested biomasses differ significantly depending on the harvest time. External effects such as weather or aging, on the other hand, have little effect on the constituent proportions [1,13]. There is also an effort to break down lignin enzymatically or with the help of fungi. For example, Baker *et al.* investigated the effects of wood rot on the biomass degradation of various *Miscanthus* genotypes [25]. Sonnenberg *et al.* examined shiitake mushrooms as a means of biomass degradation. They found that a significant breakdown of lignin (and hemicellulose) in *M. x giganteus* can also be achieved with these mushrooms [26]. However, these studies [23-26] only report lignin quantity with no isolated lignin structural data.

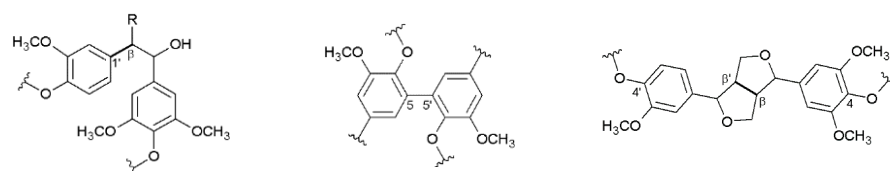
Besides crop and cell wall composition, focus of current research is also directed toward *Miscanthus*-derived lignins and their detailed 3D structure, including the monolignol ratio (G, H, S, **Figure 1**) and corresponding interunit linkages (**Figures 2 to 4**) [27-31].



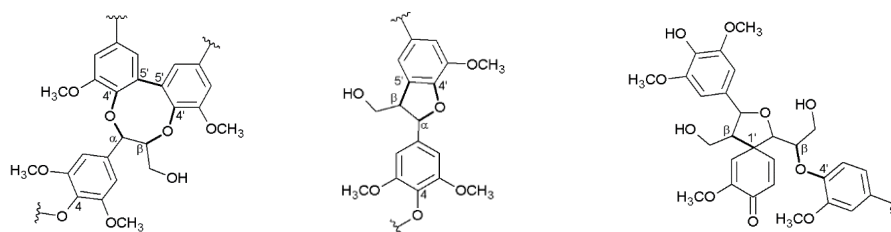
**Figure 1.** Monolignol structures: *p*-coumaryl alcohol, coniferyl alcohol and sinapyl alcohol forming the specific residues *p*-hydroxyphenyl (H), guaiacyl (G) and syringyl (S). Reprinted from [30] under open access license.



**Figure 2.** Ether linkages (from left to right:  $\beta$ -aryl-ether ( $\beta$ -O-4'),  $\alpha$ -aryl-ether ( $\alpha$ -O-4'), biphenyl ether (4-O-5')); R = CH<sub>2</sub>OH, lignin. Reprinted from [31] under open access license.



**Figure 3.** Carbon-carbon linkages (from left to right: 1,2-diarylpropane ( $\beta$ -1'), biphenyl (5-5'), resinol ( $\beta$ - $\beta'$ )); R = CH<sub>2</sub>OH, lignin. Reprinted from [31] under open access license.



**Figure 4.** More complex linkages (from left to right: dibenzodioxocin ( $\alpha$ -O-4'/ $\beta$ -O-4'/5-5'), phenylcoumaran ( $\alpha$ -O-4'/ $\beta$ -5'), spirodienone ( $\beta$ -1'/ $\beta$ -O-4')). Reprinted from [31] under open access license.

Both the G/H/S ratio and the linkages strongly depend on the biomass origin (crop genotype) and biomass treatment (pulping) method for lignin isolation. Industrially, the most common pulping methods are Kraft pulping and various steam explosion techniques. However, these produce significant amounts of unusable waste [32]. On the laboratory scale, organosolv processes for *Miscanthus* pulping have become common to avoid these environmentally harmful waste products. El Hage *et al.* reported the structure determination and correlating effects during the pretreatment of the biomass in the ethanol organosolv digestion [33-35]. Chan *et al.* were able to isolate and partially depolymerize lignin obtained from *M. x giganteus* using a vanadium catalyzed organosolv process. Variation of the process parameter significantly influence the biomass digestion resulting in structural differences of the isolated lignins [36]. Luo *et al.* used a nickel-activated carbon catalyst to degrade *Miscanthus* lignin into soluble components through a methanol organosolv process under H<sub>2</sub> pressure [37]. Overall, they showed that all three main components of biomass (lignin, cellulose, and hemicellulose) could be used efficiently to generate valuable chemicals.

Vanderghem *et al.* compared lignins from *M. x giganteus* that they obtained from different pulping methods. The characterization was carried out by means of FTIR spectroscopy, TGA, GPC and NMR spectroscopy [38]. Lignin from *M. x giganteus* and other biomasses were studied by Timilsena *et al.*: the authors exposed the biomass to various pretreatment methods (e.g. autohydrolysis, treatment with 2-naphthol, enzymatic hydrolysis) and the obtained lignins have been analyzed [39]. Direct analysis of the untreated dried biomass was used by Groenewold *et al.* to specify the composition of *M. x giganteus*. Pyrolysis GC/MS and NMR techniques were used for structure analysis and to determine the monolignol ratio [40]. However, the native lignin structure of lignocellulose biomass is still under investigation [41,42].

The molecular weight (MW) and polydispersity (PD) are fundamental characteristics to be considered for future applications of lignin [43]. Compared to technical wood-based kraft lignin (with PD of 2.6 to 6.5 depending on biomass origin and pre-treatment conditions), the *Miscanthus*-derived lignins presented here exhibit lower PD (below 1.7) [43]. In two previously published studies [44,45], we showed the influence of crop genotype and harvesting season on MW and PD. An increase of MW was observed for stem-derived lignins of *M. x giganteus* and *M. nagara* from September to April [30,45]. Furthermore, the influence of biomass particle size on MW and PD has been investigated for different low-input crops including *M. x giganteus* [31]. Currently, diffusion ordered spectroscopy (DOSY) NMR is used and combined with size exclusion chromatography (SEC) to obtain further information on MW and PD as shown for lignin [46] and polysaccharides [47].

In this mini-review, we present a comparative study on lignins isolated from six different *Miscanthus* genotypes including *M. x giganteus* (Gig17, Gig34, Gig35), *M. sinensis* (Sin2), *M. robustus* (Rob4), and the winterhard hybrid *M. nagara* (NagG10). Leaves and stems were harvested separately from three harvests (December 2014, April 2015, and September 2015). The lignin samples were extracted from all biomasses using a catalyst-free organosolv pulping process and analyzed regarding the lignin content, monolignol composition (G, H, S) and corresponding monolignol linkages. Parts of the original data set have recently been published in previous works [30,31,44,45]. In addition, original data obtained for *M. sinensis* and *M. robustus* are presented and discussed in comparison to results found for *M. x giganteus* and *M. nagara*. Based on this information, the potential for different genotypes to serve as industrial crops for lignin isolation and utilization is discussed.

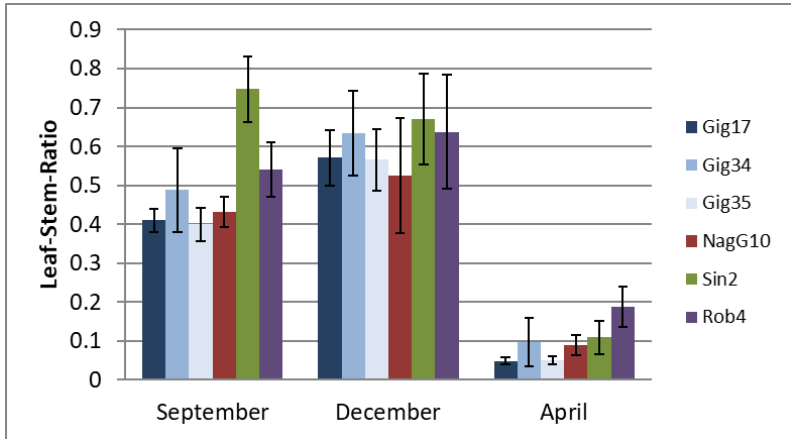
## 2. Biomass Leaf-to-Stem Ratio, Chemical Composition, Lignin and Ash Content

### 2.1. Leaf-to-Stem Ratio and Chemical Composition of the *Miscanthus* Biomass

First, the seasonal influence on plant constitution was examined. Stem and leaf samples for lignin analysis were harvested in December 2014 and in April and September 2015 to compare across

different years and harvest times. Plant constitution analysis showed significant differences regarding the biomass amount with respect to the year and harvest date (Figure 5).

The data in Figure 5 was arranged to follow the seasonal order from autumn to spring: In early autumn (September), the leaf content did not reach the maximum (except for *M. sinensis*) when compared to the December harvest. During winter, the plants lose their leaves, which results in an extremely low leaf versus stem ratio in the April harvest. The highest values were found for *M. robustus* (Rob4) [45].



**Figure 5.** Leaf versus stem content (weight ratio of dry matter) of different *Miscanthus* genotypes: *M. x giganteus* (Gig17, Gig34, Gig35), *M. nagara* (NagG10), *M. sinensis* (Sin2), and *M. robustus* (Rob4) harvested in September (09/15), December (12/14), and April (04/15), respectively, arranged to follow the seasonal order from autumn to spring. Reprinted from [45] under open access license. Error bars are standard deviation of triplicates.

In Table 1 and Table 2, chemical composition (according to NREL procedures) is shown for the six leaf (Table 1) and stem (Table 2) samples from the April 2015 harvest. Structural carbohydrates in plants in general include glucan, xylan, galactane, arabinan and mannan. The total lignin content is derived from acid-soluble lignin (ASL) and acid-insoluble lignin (AIL). If one compares the dry matter, which is determined when the sample is heated at just over 100 °C, to the mass consistency of both the leaf and stem samples there are no significant differences between the two measures. An average dry matter content of 91.16 % shows that the samples have already been deprived of a great deal of moisture by the previous treatment (storage, drying). The ash content shows the proportion of inorganic (mineral) components. This is determined gravimetrically from the residues during the targeted combustion of the biomass. Here, there are clear differences between leaf and stem samples. While the ash content in the stem is comparatively low at an average of 2.6 %, the leaf samples have more than twice as much ash content at 5.7 %. This indicates that more minerals are stored in the leaves than in the rest of the plant.

**Table 1.** Chemical composition according to NREL protocols for leaf-derived Miscanthus (AIL: acid-insoluble lignin, ASL: acid-soluble lignin, AIR: acid-insoluble residue).

Genotyp	Gig17	Gig34	Gig35	NagG10	Sin2	Rob4
AIL (%)	20.6 ± 0.5	21.1 ± 0.3	19.4 ± 0.9	17.6 ± 0.4	18.6 ± 0.0	18.8 ± 0.1
ASL (%)	5.1 ± 0.3	4.1 ± 0.0	5.1 ± 0.0	4.9 ± 0.0	6.0 ± 0.2	5.7 ± 0.0
AIR (%)	21.8 ± 0.5	22.1 ± 0.4	20.2 ± 1.2	19.2 ± 0.2	19.5 ± 0.0	19.8 ± 0.1
Total lignin (%)	25.5 ± 0.5	25.3 ± 0.5	24.6 ± 0.8	22.5 ± 0.4	24.6 ± 0.2	24.5 ± 0.1
Ash (%)	1.2 ± 0.1	1.1 ± 0.2	0.8 ± 0.2	1.6 ± 0.2	0.9 ± 0.0	1.0 ± 0.1
Glucan (%)	44.8 ± 1.5	45.0 ± 2.3	48.5 ± 1.1	46.3 ± 2.5	43.6 ± 0.3	41.54 ± 0.2
Xylan (%)	28.4 ± 1.8	29.5 ± 0.6	29.4 ± 0.6	29.6 ± 1.1	28.2 ± 0.4	26.5 ± 0.5
Galactan (%)	0.0 ± 0.0	0.0 ± 0.0	0.0 ± 0.0	0.0 ± 0.0	0.4 ± 0.6	1.1 ± 0.0
Arabinan (%)	3.1 ± 0.0	4.1 ± 1.6	3.6 ± 0.3	4.7 ± 0.1	4.4 ± 0.0	3.6 ± 0,0
Mannan (%)	0.0 ± 0.0	0.0 ± 0.0	0.0 ± 0.0	0.0 ± 0.0	2.3 ± 0.0	2.3 ± 0,0
Dry matter (%)	92.5	91.2	91.2	91.4	91.9	92.6
Total ash (%)	4.5	6.8	5.2	6.4	5.4	5.8

**Table 2.** Chemical composition according to NREL protocols for stem-derived Miscanthus (AIL: acid-insoluble lignin, ASL: acid-soluble lignin, AIR: acid-insoluble residue).

Genotype	Gig17	Gig34	Gig35	NagG10	Sin2	Rob4
AIL (%)	21.2 ± 0.0	21.0 ± 0.4	22.0 ± 0.1	21.3 ± 0.1	19.2 ± 0.1	19.2 ± 0.1
ASL (%)	4.7 ± 0.3	4.3 ± 0.0	5.0 ± 0.1	4.5 ± 0.1	5.7 ± 0.0	5.3 ± 0.2
AIR (%)	22.4 ± 0.2	22.3 ± 0.6	22.5 ± 0.1	21.8 ± 0.1	19.8 ± 0.2	19.8 ± 0.1
Total lignin (%)	26.0 ± 0.4	25.2 ± 0.4	27.0 ± 0.2	25.8 ± 0.1	24.9 ± 0.1	24.5 ± 0.1
Ash (%)	1.3 ± 0.1	1.0 ± 0.0	0.6 ± 0.0	0.5 ± 0.1	0.7 ± 0.1	0.6 ± 0.1
Glucan (%)	50 ± 0.6	50.5 ± 0.9	49.6 ± 0.4	47.1 ± 1.4	48.2 ± 3.0	45.7 ± 0.3
Xylan (%)	27.4 ± 2.8	26.2 ± 0.5	23.6 ± 0.0	23.9 ± 0.5	28.7 ± 1.7	25.6 ± 0.3
Galactan (%)	0.0 ± 0.0	0.0 ± 0.0	0.2 ± 0.4	0.0 ± 0.0	0.0 ± 0.0	0.0 ± 0.0
Arabinan (%)	1.9 ± 0.5	2.0 ± 0.3	1.8 ± 0.4	1.8 ± 1.6	2.9 ± 0.2	2.1 ± 0.2
Mannan (%)	0.0 ± 0.0	0.0 ± 0.0	1.1 ± 1.6	0.0 ± 0.0	2.3 ± 0.1	2.3 ± 0.0
Dry matter (%)	92.2	92.2	92.1	93.0	92.8	92.7
Total ash (%)	2.5	3.1	2.4	1.8	3.4	2.2

The results obtained are in good accordance with those determined for the biomass ash content and correspond to other literature data. Wahid *et al.* reported ash contents from 2.6 to 4.0 % for *M. x giganteus* stem samples and 1.5 to 3.4 % for *M. sinensis* stems. For leaf samples, ash contents vary between 3.9 - 7.2 for *M. x giganteus* and 3.3 - 5.0 % for *M. sinensis* [48]. For the plant as a whole, ash contents of 1.9 to 2.3 % were determined [49,50]. The average ash content of acid-insoluble residues (AIR) is 0.9 % and shows that there are hardly any mineral impurities in it.

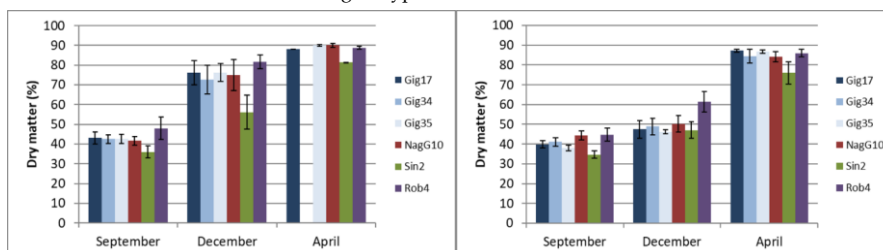
Comparing the results of the leaf samples (**Table 1**), it is noticeable that all genotypes except NagG10 have a lignin content of around 25 % (mean: 24.5%). NagG10 drops slightly at about 22.5 %. For the sugars, Gig35 and NagG10 are particularly high in glucose, which would be of interest for their further processing. The hemicellulose (shown here in parts xylan, galactan, arabinan and mannan) of the hybrid genotypes Gig17, Gig34, Gig35 and NagG10 consists mostly of xylan with small proportions of arabinan. For the pure genotypes Sin2 and Rob4, small amounts of galactan and mannan were detected, which makes the hemicellulose of these genotypes less homogeneous.

For the stem samples (**Table 2**), the following picture emerges: All genotypes show an average lignin content of 25.6 % (i.e. slightly higher than for leaf samples), with Gig35 having the highest lignin content at 27.1 %, followed by the hybrid genotypes Gig17, Gig34 and NagG10; the lowest lignin content shows Sin2 and Rob4. The sugar distribution in the stem samples shows a significantly higher glucan content compared to the leaves, caused by the higher content of cellulose in the stems. There is no special classification for hemicellulose: in all samples, xylan dominates with a small proportion of arabinan; however, mannan is another hemicellulose component in Sin2, Rob4 and Gig35. The traces of galactan found in Gig35 are 0.2 %, below the deviation of  $\pm 0.4$  %.

The lignin content slightly differs depending on the crop genotype with lowest values (22.5 %) for *M. nagara* up to 27 % for *M. x giganteus*, which agrees with results reported by other groups [49-52]. For the most common Miscanthus genotype *M. x giganteus*, cellulose content varies usually between 40 - 50 %. Hemicellulose is also largely composed of xylan with low shares of arabinan. In addition, mannan and galactan are only found at lower weight percent ratios (max 2.1%) [49,50].

## 2.2. Dry Matter

A comparison of the dry matter in the leaf samples (**Figure 6a**) shows that in total they have apparently not fully matured in the September harvest, as all samples have a dry matter of less than 50 %. This changes significantly for the December harvest, as significantly drier samples are obtained here (except for Sin2). These even increase to almost 90% towards the April harvest (no values were available for genotype Gig34). Sin2 shows a significantly lower dry matter content in the context of the individual harvests than all other genotypes.



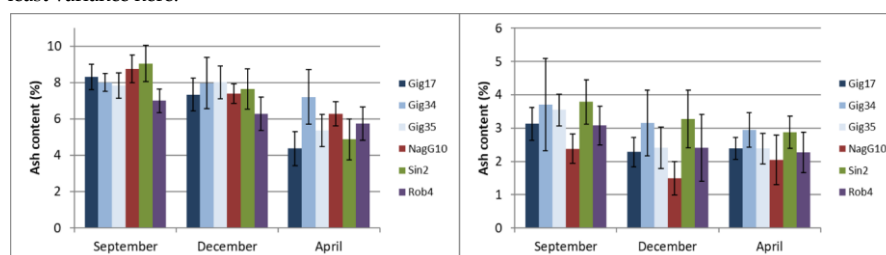
**Figure 6. a and b.** Dry matter of the leaves (**a**, left) and stems (**b**, right) of all six genotypes harvested in September (09/15), December (12/14) and April (04/15), respectively.

A comparison with the stem samples, the overall picture is somewhat different (**Figure 6b**). In the September harvest, these are also relatively rich in moisture, but show only a minimal increase in dry matter in the December harvest. In April, almost 90 % of the dry matter could be assigned to the stalks for all genotypes. For all three harvests, Sin2 shows the lowest dry matter in the stalk.



### 2.3. Ash Content

For the three harvests in which the plant components were separated from each other during harvest, the ash content of the leaf and stem samples are compared below (Figures 7a and 7b). Similar to the the NREL analysis, the leaf samples contain significantly more ash than the stem samples. When looking at the leaf samples alone, five out of six genotypes have the highest ash content in the September harvest. This decreases for all genotypes except for Gig35 (this initially seems to remain constant until December) over the December to April harvest, since parts of the mineral inorganic compounds are more heavily washed out after the senescence of the plant. In proportion, the Gig17 and Sin2 lose the most ash from September through December through April. The Gig34 shows the least variance here.



**Figure 7. a and b.** Ash content of the leaves (a, left) and stems (b, right) of the six *M.* genotypes harvested in September (09/15), December (12/14) and April (04/15), respectively.

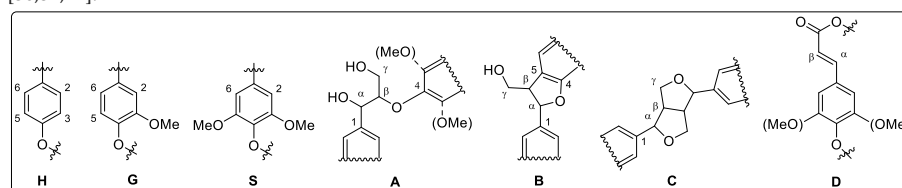
Overall, the stem samples show significantly lower ash contents, which also fluctuate less than in the leaf samples. Here, too, the highest values were found in the September harvest and the lowest in the April harvest with the exception of Gig17 and NagG10, which show a minimum in the December harvest and then rise again slightly towards April.

Similar results are also described in the literature: Iqbal *et al.* reported the harvests of *Miscanthus* crops at different times and in different locations, but comparisons can still be made. Here too, the ash content for the miscanthus samples used drops towards spring [12].

## 3. Structure of the Isolated Miscanthus-derived Lignins

### 3.1. Monolignol Ratio According to NMR Spectroscopy

Nuclear magnetic resonance (NMR), particularly heteronuclear single quantum coherence (HSQC) NMR is used to study the detailed 3D structure of isolated lignins [53]. Spectra of the aromatic region are used to specify the lignin monomer building blocks (H, G, S), whereas the signals of the non-aromatic mainly indicate the linkage patterns (A, B, C, D) within the lignin (Figure 8) [30,31,44].

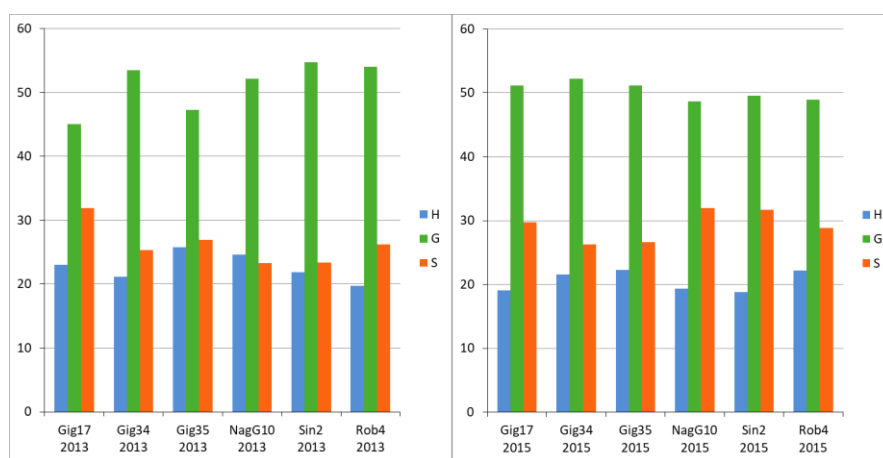


**Figure 8.** Monolignol units (H, G, S) and corresponding linkages (A: β-O-4 linkage, B: phenylcoumaran, C: resinol, D: β-unsaturated ester) of lignins according to HSQC NMR. Reprinted from [44] under open access license.

Two dimensional (2D) NMR, such as HSQC technique, provides powerful tool for qualitative and quantitative analysis due to much better discrimination of resonances than in 1D NMR.

However, 2D NMR peak volumes depend on a number of parameters like relaxation time, pulse sequence delays, pulse angles, off-resonance effects [54]. Therefore, standard 2D HSQC pulse sequence used in this study is only suitable for semiquantitative analysis of linkages pattern in lignin molecules. Precision of HSQC integration is about 5%. This value should be used for assessing data in **Figures 9 to 13**. In future studies, we plan to develop HSQC pulse sequence for accurate quantitative measurements.

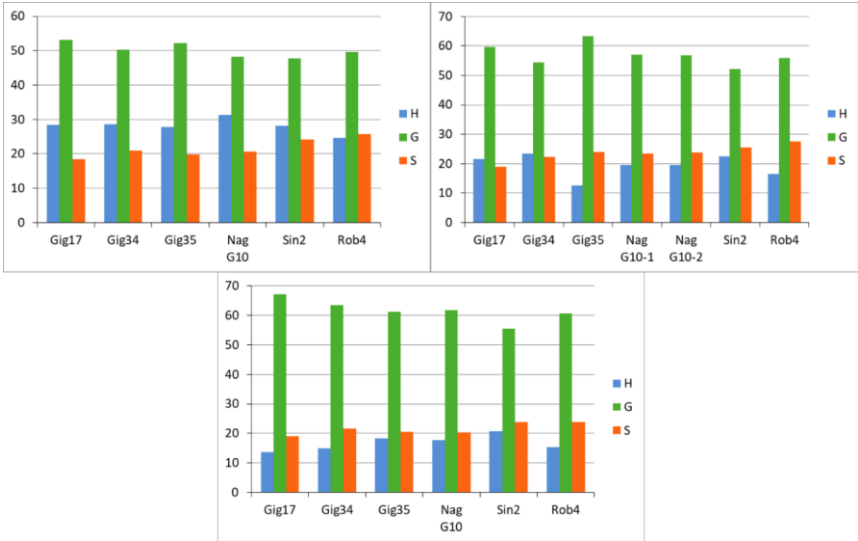
The monolignol ratio (H/G/S) has been investigated for lignins isolated from the biomass stem-leaf-mixtures (**Figures 9a and 9b**), leaf-derived (**Figures 10a, 10b, 10c**) and stem-derived lignins (**Figures 11a, 11b, 11c**).



**Figure 9. a.** Monolignol ratios (H, G, S in %) of the crop mixtures (stem and leaves) harvested in 2013 according to HSQC NMR. Precision of HSQC integration is about 5%.

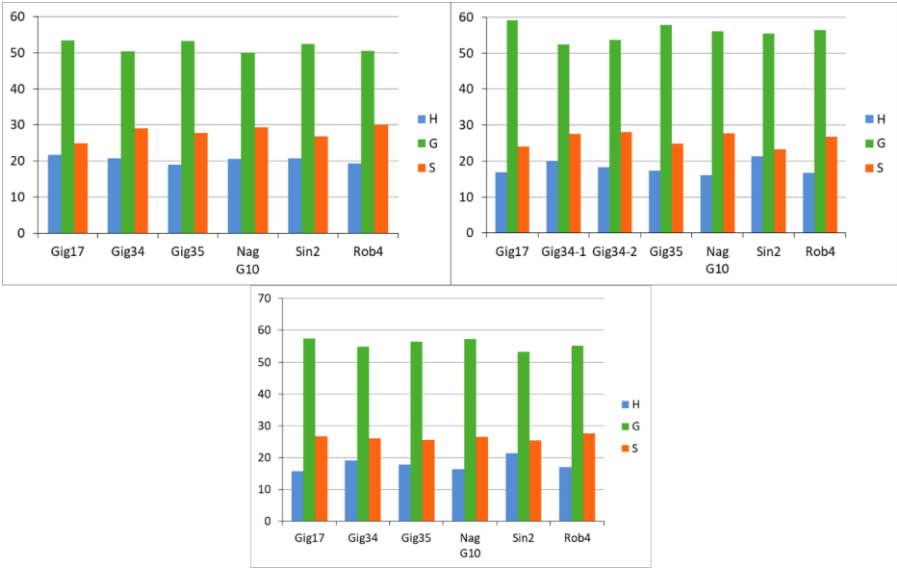
**Figure 9. b.** Monolignol ratios (H, G, S in %) of the crop mixtures (stem and leaves) harvested in 2015 according to HSQC NMR. Precision of HSQC integration is about 5%.

For the stem/leaf mixtures harvested in 2013 (**Figure 9a**) and 2015 (**Figure 9b**), there is no systematic correlation between genotype and monomer ratio. The ratio varies between the genotypes, but also between the different harvests of the same genotype. For example, *M. nagara* (NagG10), which has more H than S in the 2013 harvest, shows a clearly opposite picture in 2015. In general, G units are the most common ones with around 50 %, followed by S units varying between 20 to 30 %. The H unit makes up the smallest share with approximately 20 %. Duplicates NagG10-12/14-1 and NagG10-12/14-2 show a first indication regarding the reliability of the data. Very recently, statistical studies were performed and published confirming the robustness of this catalyst-free organosolv process to obtain lignins of high purity [31].



**Figure 10. a-c.** Monolignol ratios (H, G, S in %) of the leaf-derived lignins, harvested in September (09/15) (a, above/left), in December (12/14) (b, above/right) and in April (04/15) (c, below), due to HSQC NMR. NagG10-1 and NagG10-2 (Fig. 10, above/right) are duplicates. Precision of HSQC integration is about 5%.

For the leaf-derived lignins of all genotypes (**Figures 11 a-c**) an interesting development could be observed: the amount of G units increases significantly from harvest to harvest (ca. 50 % in September, ca. 55 % in December and ca. 60 % in April) for all studied genotypes (except for Gig35).



**Figure 11. a-c.** Monolignol ratio (H, G, S in %) of stem-derived lignins harvested in September (09/15) (a, above/left), in December (12/14) (b, above/right) and in April (04/15) (c, below), analyzed via HSQC NMR. Precision of HSQC integration is about 5%.

In contrast, the H portion drops significantly in the same order from approx. 30 % in September to approx. 15 % in April. There is no remarkable development for the S building block, the share remains almost the same for all genotypes at approx. 20 %. For the stem-derived lignins (Figures 11 a-c) the share of the G block increases significantly from September to December and remains approximately the same until April. In contrast to the leaf-derived lignins, the composition of the lignin in the stem obviously no longer changes over the winter. For the H and S building blocks, too, there are only deviations between September and December: Both the H and S components decrease somewhat. The duplicates (Gig34-12/14-1 and Gig34-12/14-2) show slight, negligible differences in the compositions, indicating the reproducibility of the applied organosolv procedure.

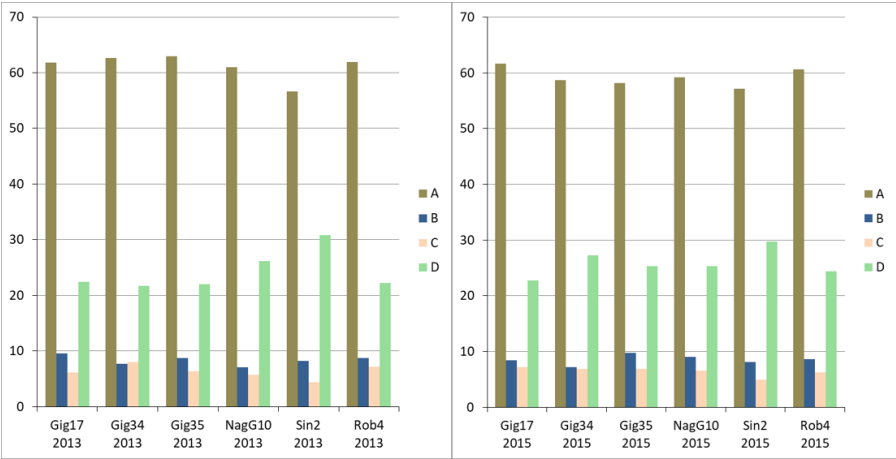
In summary, comparing mixtures, leaf- and stem-derived lignins, the leaf-based samples show a high G content of more than 60%, especially in the late harvest in April, which is sometimes well below this value for both stem and mixture samples due to the higher content of stems in mixture samples. In addition, the early harvests in September show a comparatively high proportion of the H building block of around 30 % in the leaf samples. Only about 20 % were achieved for stem and mixture samples.

Deleted: ,

3.2. Interunit Linkages According to NMR-Spectroscopy

In contrast to many previously published NMR spectra, it is striking that there are no signals that indicate sugar residuals, confirming the high purity of the isolated lignins [30,31,44,45,55]. El Hage *et al.* detected minor amounts of carbohydrates in ethanol organosolv lignin from *Miscanthus* determined by <sup>13</sup>C-NMR [34]. In contrast, Vanderghem *et al.* found up to 14 % residual carbohydrates in lignin isolated from *Miscanthus* via ammonia pretreatment [38].

Considering the linkages A, B, C, D (Figures 12a and 12b), there is no distinct pattern for the lignins isolated from stem/leaf mixtures. Comparing three *M. x giganteus* samples (Gig17, Gig34 and Gig35), harvested in 2013 and 2015, respectively, β-aryl ethers (A) are the most common linkages with approximately 70 %, followed by β-unsaturated ester linkages (D) with almost 20 %.

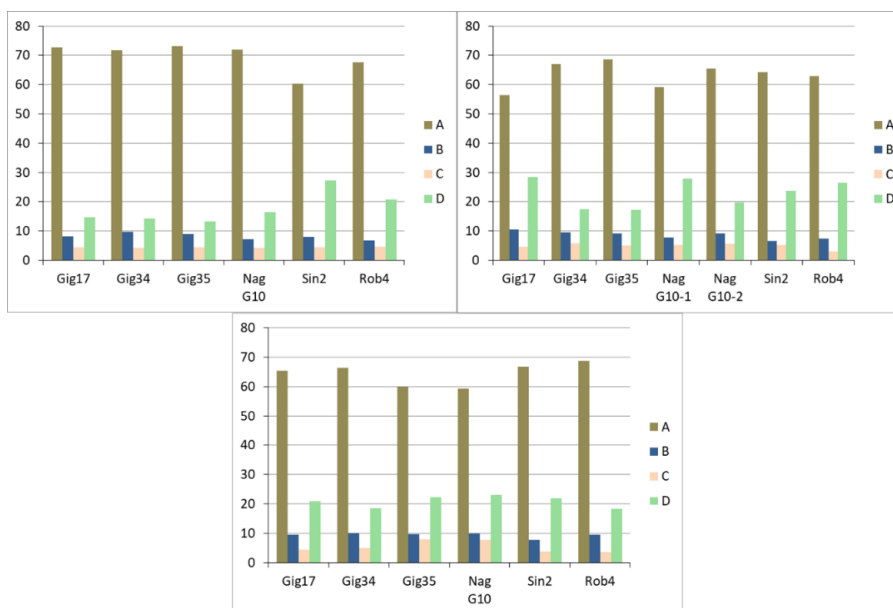


**Figure 12. a.** Monolignol linkages (A, B, C, D in %) of the stem/leaf mixture harvested in 2013 analyzed via HSQC NMR. Precision of HSQC integration is about 5%.

**Figure 12. b.** Monolignol linkages (A, B, C, D in %) of the stem/leaf mixture harvested in 2015 analyzed via HSQC NMR. Precision of HSQC integration is about 5%.

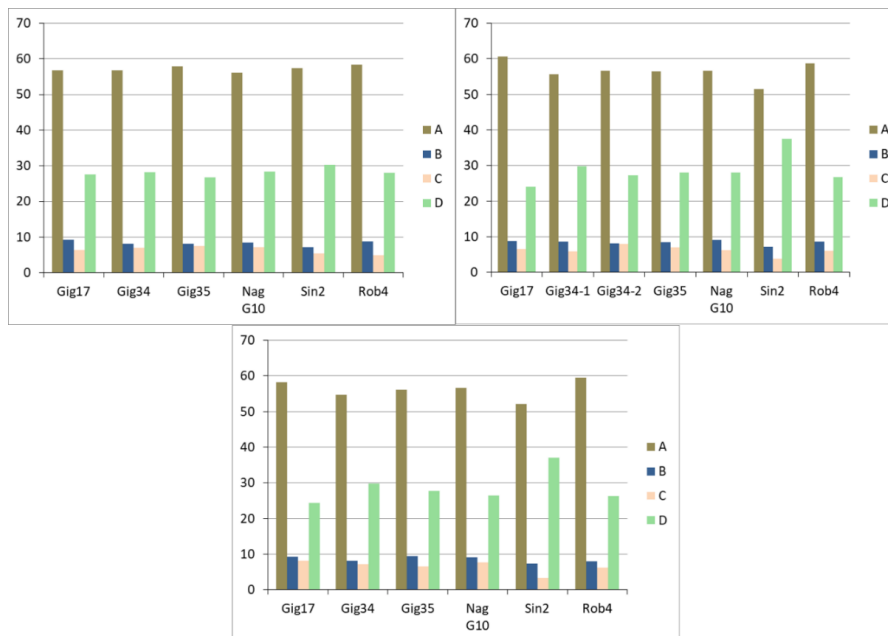
The two linking patterns, phenylcoumaran (B) and resinol (C), were the smallest proportion of the lignin structure, sometimes well below 10 %. There are fluctuations for all genotypes and for both harvests, with NagG10, Sin2, and Rob4 showing the smallest deviations.

The linkage patterns in the leaf-derived lignins (**Figures 13 a-c**) vary considerably, e.g. the  $\beta$ -aryl ethers (A) percentage differs by up to 10 %. For all lignins, very high proportion of aryl ether linkages were found. No systematic changes can be determined for the genotypes *M. x giganteus*, *M. nagara* and *M. robustus* (Gig17, NagG10, Rob4), respectively). For the two *M. x giganteus* samples (Gig34, Gig35), A linkages decrease from September to April harvest whereas D bonds increase. Phenylcoumaran linkages (B) remain relatively constant and resinol bonds (C) increase at least for Gig35. The only exception is the *M. sinensis* (Sin2) where  $\beta$ -aryl ethers (A) rises from September to April whereas resinol (C) and  $\beta$ -unsaturated ester linkages (D) decrease.



**Figure 13. a-c.** Monolignol ratio (H, G, S in %) of leaf-derived lignins harvested in September (09/15) (a, above, left), in December (12/14) (b, above, right) and in April (04/15) (c, below), analyzed via HSQC NMR. NagG10-1 and NagG10-2 are duplicates. Precision of HSQC integration is about 5%.

The stem-derived lignins show a similarly heterogeneous picture (**Figures 14 a-c**): here the analysis is also different for all genotypes. *M. x giganteus* (Gig34, Gig35) and *M. nagara* (NagG10) show almost no changes between the different harvests. For *M. sinensis* (Sin2), linkages A decrease from September to April, but D increase significantly. For *M. robustus* (Rob4), B bonds decrease whereas C increase. In contrast, there is no systematic development for the genotype Gig17.



**Figure 14. a-c.** Monolignol linkages (A, B, C, D in %) of stem-derived lignins harvested in September (09/15) (a, above left side), in December (12/14) (b, above right side) and in April (04/15) (c, below), due to HSQC NMR. Precision of HSQC integration is about 5%.

It can be summarized that the A content is particularly high in leaf-derived lignins at just under 70 % and significantly lower in stem and mixture lignins at around 60 % and almost 65 % respectively. The second most common linkage pattern is D in all isolated lignins, the proportion of which is also strongly dependent on the part of the plant from which the lignin originates. The stem and mixture lignins, for example, have a relatively high share of approximately 20 % or more (peak value for *M. sinensis* Sin2 with over 30 %). In the leaf-derived lignins, the proportions are significantly lower on average.

Results presented here for stem versus leaf-based lignins are in good agreement with previously published studies including further data such as crop yields, chemical composition of the biomasses, ash contents [30,31,44,45] and calorific values [44]. If the highest possible lignin content is desired, stem samples should be chosen, specifically from the *M. x giganteus* genotype, which revealed lignin contents up to 27 %.

From a European agricultural perspective, the genotype *M. nagara* (NagG10) might be the most suitable for further uses due to its high crop yield and winter hardiness. Studies on *M. nagara* focused the winter cold-tolerance thresholds, cultivation conditions and corresponding yields [56]. Compared to other genotypes, *M. nagara* exhibits a high stability due to very strong stems. Moreover, studies confirmed late mature, fast rhizome formation, a good frost tolerance and a lower leaf loss during winter [57-62]. The results regarding the monolignol ratio are in good accordance with HSQC NMR data reported for lignins isolated from *Miscanthus* crops [31,54,63-67] with the exception of the polysaccharide-lignin-linkages not found here in this study. This is most likely due to the mild catalyst-free organosolv pulping method used.

#### 4. Materials and Methods

In the following, the organosolv process, the determination of the chemical composition according to the NREL procedure as well as the HSQC NMR analyses are described. Further details could be found in the corresponding studies reported by our group [30,31,44,45].

#### 4.1. Lignin Isolation using a Catalyst-free Organosolv Process

The *Miscanthus* samples were ground to a particle size of less than 0.5 mm using a ball mill (Fritsch model Pulverisette 6) and a sieving machine (Retsch model AS 200 basic). The digestion method used was previously published in detail [30]. For this purpose, 50 g of the biomass samples were mixed with 500 mL of 80% ethanol solution in a Parr pressure reactor. The ethanolic Organosolv digestion began with heating to 170 °C and holding this temperature for 90 min. After the apparatus had cooled down, the reactor with the liquid-solid mixture was removed and all residue was collected. The biomass was filtered off on a water jet pump and the filtrate was washed with 5 × 50 mL 80% ethanol solution. The mother and washing solutions were collected and then three volumes of deionized water was added and acidified to a pH of 2 with approx. 10 mL 37% hydrochloric acid. The precipitated lignin was centrifuged in, washed five times with deionized water and then freeze-dried. Lignin yields of approx. 20% were achieved.

Deleted: ,

#### 4.2. Chemical Composition of the Biomasses

The determination of the chemical composition of the *Miscanthus* biomasses was carried out in the laboratories of the Research Institute Bioactive Polymer Systems eV (Biopos) in Teltow. Analyses were performed according to the NREL (National Renewable Energy Laboratory) procedures [68].

#### 4.3. HSQC NMR Analyses

Approx. 100 mg of the lignin samples were dissolved in 1 mL of deuterated DMSO and transferred to NMR tubes. These were measured on a Bruker NMR Spectrometer Avance III 600 with 4 scans and 16 previous dummy scans. The data from 4000 points were recorded with a spectral width of 7211 Hz and a total acquisition time of 0.28 s. Precision of HSQC integration is about 5%.

### 5. Conclusion

In this review, we show that both, the specific *Miscanthus* genotype factor as well as harvest time have a comparatively small influence on the lignin that is produced. In contrast, the plant component (leaf *versus* stem) play a more important role to distinguish the lignin structure and interunit linkages. In a previous study, we used principal component analysis (PCA) of various *Miscanthus*-derived lignin samples to specify the differences between stem and leaf-derived lignins. The projections of infrared data on the first three principal components (PCs) expressed 82% of variance [45].

The organosolv process as a digestion method has proven itself in every case: it delivers pure lignins, free of sugar residues. The reproducibility of the catalyst-free process has recently been confirmed in another study [31]. If the differences in the lignins are not sufficient as a criterion for the preference for a particular genotype, one can judge based on the harvest yield or other criteria specifically relating to the plant itself, e.g. the most robust crops regarding weather and climate conditions.

From an agricultural perspective, the *M. nagara* (NagG10) genotype is the most suitable crop for further material production due to its high harvest yield. When looking at the other agricultural parameters (leaf-to-stem ratio, dry matter, ash content), all genotypes show comparable results. On the other hand, there are clear differences between leaf and stem samples (including dry matter, ash content, etc.). For example, the leaves could be preferred because they ripen more quickly or, on the other hand, the stalks could be used due to their higher calorific values and lower ash contents.

More precise statements can be made with the help of the NMR data. The H/G/S ratio and linkage pattern within the lignin is obtained. From a chemical perspective, this information can be used, for example, to split specific bonds in a targeted manner, provided the structural units obtained

are of interest for further applications. For all *Miscanthus* genotypes, the G building block is represented most dominantly and H and S fragments vary, especially between harvests. If one considers the linkage pattern as another investigated variable, one finds that  $\beta$ -aryl ethers are in majorities in all lignin types, which is also the case for wood-derived lignins. This is followed by the unsaturated ester and, in significantly lower proportions, phenylcoumaran and resinol. Due to the higher quantity of stems in mixture samples, the variance in the links is significantly greater in mixed and stem lignins than in leaf lignins, where  $\beta$ -aryl ethers also make up a higher proportion.

The knowledge gained from this work helps with the choice of certain lignin qualities for other chemical applications. Further processing of the already relatively low molecular weight lignin fragments into more defined structures also makes lignin extraction from *Miscanthus* significantly more attractive, for example for applications as bioactive additive in active packaging and medicine. For example, the whole crop application includes direct power generation, fuel production, as well as components for fiber-based hybrid materials such as lightweight concrete [10,69-71]. Moreover, cascading use of *Miscanthus* is reported using the biomass successively in integrated processes. As a result, this biomass can be used more effectively, which leads to an increase in added value [72].

Within the last decade, wood and grass-derived lignins gained increasing interest [73-76]. A comprehensive market studies confirmed the urgent demand on sustainable aromatic compounds such as lignin (and its derivatives) to substitute fossil-based aromatic substances in a wide range of applications [77,78]. Due to the aromatic character with inherent number of aliphatic and aromatic hydroxyl groups, lignins are studied as substitutes for diols and polyols for polyurethane synthesis [79-82] and preparation of phenol-based resins [83].

In addition to applications as components in polymer synthesis, lignins are investigated and tested as bioactive additives, in particular as antioxidative [84] and antimicrobial [85] substances. Drug encapsulation gels and hydrogels have been developed using lignins and lignosulfonates [86,87] for applications in tissue engineering and regenerative medicine [88-90].

## 6. Future Perspectives

Although the structural analysis of lignins has been a focus of worldwide research activity for years, the rather complex biosynthesis results in numerous interunit linkages that vary from plant to plant resulting in a wide variety of published structures. Even today, hitherto unknown linkages are published, such as tricin structures reported by Lan and colleagues [91]. Thus, it is still a challenge to provide a "specification" for lignin as an industrial raw material. However, studies showed that the *Miscanthus* genotype does not greatly influence the linkage. Thus, fast and reliable analytical methods are important for lignin quality control and assurance. The NMR spectroscopy in principle allows fast characterization. However, as for other spectroscopic methods such as infrared spectroscopy, signal overlap restricts quantitative data interpretation.

Due to the influx of studies reported within the last decade, chemometric data processing will be critical to solving this problem [31,45,91-99]. In particular, methods such as partial component analysis (PCA), linear discriminant analysis (LDA), factorial discriminant analysis (FDA) and partial least squares-discriminant analysis (PLS) were shown to provide data for biomass origin specification of complex structures such as lignin. A problem to be solved in future will be the quantification using 2D NMR. So far, methods such as HSQC are generally limited since pulse sequences are usually optimized for resolution and signal strength, but signal relaxation might not be complete particularly for some slowly relaxing end groups. Here, further efforts are required regarding the underlying mathematical approach.

**Acknowledgement:** Thanks to the Research Institute Bioactive Polymer Systems e.V. (Biopos e.V.) in Teltow for the analyses of the chemical composition of the biomasses conducted according to the NREL standard procedures.

**Funding:** This project was funded by the BMBF program "IngenieurNachwuchs" project "LignoBau" (03FH013IX4) and BioSC project "*Miscanthus* Cascade Utilization" (NRW state ministry for research). A PhD scholar ship was given to M.B. by the Graduate Institute of Bonn-Rhein-Sieg University of Applied Sciences. Y.M. acknowledges support from the Russian Science Foundation (project 18-73-10009).



**Author Contributions:** Conceptualization, M.B. and M.S.; methodology, M.B.; formal analysis and investigation, M.W., C.K.; Y.M.; resources, M.S.; R.P.; B.D.; writing—original draft preparation, M.B. and M.S.; review and editing, C.K.; Y.M.; M.S.; project administration, M.S.; funding acquisition, M.S. and R.P. All authors have read and agreed to the published version of the manuscript.

**Conflicts of Interest:** The authors declare no conflict of interest.

## References

- Winkler, B.; Mangold, A.; von Cossel, M.; Clifton-Brown, J.; Pogrzeba, M.; Lewandowski, I.; Iqbal, Y.; Kiesel, A. Implementing miscanthus into farming systems: A review of agronomic practices, capital and labour demand. *Renew. Sust. Energy Rev.* **2020**, *132*, 110053, doi:10.1016/j.rser.2020.110053.
- GRACE. GRowing Advanced Industrial Crops on Marginal Lands for Biorefineries. Available online: <https://www.grace-bbi.eu/project/> (accessed on October 25, 2020).
- von Cossel, M.; Lewandowski, I.; Elbersen, B. *et al.* Marginal Agricultural Land Low-Input Systems for Biomass Production. *Energies* **2019**, *12*, 3123–48, doi:10.3390/en12163123.
- Ben Fradj, N.; Rozakis, S.; Borzęcka, M.; Matyka, M. Miscanthus in the European bio-economy: A network analysis. *Ind. Crops Prod.* **2020**, *148*, 112281, doi:10.1016/j.indcrop.2020.112281.
- von Cossel, M.; Mangold, A.; Iqbal, Y.; Hartung, J.; Lewandowski, I.; Kiesel, A. How to Generate Yield in the First Year—A Three-Year Experiment on Miscanthus (*Miscanthus x giganteus*) Establishment under Maize (*Zea mays* L.). *Agronomy* **2019**, *9*, 237, doi:10.3390/agronomy9050237.
- Hassan, S.S.; Williams, G.A.; Jaiswal, A.K. Lignocellulosic Biorefineries in Europe: Current State and Prospects. *Trend Biotechnol.* **2018**, doi:10.1016/j.tibtech.2018.07.002.
- Vanhamaki, S.; Medkova, K.; Malamakis, A.; Kontogianni, S.; Marisova, E.; Huisman-Dellago, D.; Moussiopoulos, N. Bio-based Circular Economy in European National and Regional Strategies. *Int. J. Sustain. Dev. Plan.* **2019**, *14*, 31–43, doi:10.2495/SDP-V14-N1-31-43.
- Communication from the Commission to the European Parliament, the Council, the European Economic and Social Committee and the Committee of the Regions. A Sustainable Bioeconomy for Europe: Strengthening the Connection between Economy, Society and the Environment; Reference No. 11.10.2018 COM; The European Commission: Brussels, Belgium, 2018.
- Pude, R.; Treseler, C.H.; Noga, G. Morphological, chemical and technical parameters of Miscanthus genotypes. *J. Appl. Botany* **2004**, *78*, 58–63.
- Moll, L.; Wever, C.; Völker, G.; Pude, R. Increase of Miscanthus Cultivation with New Roles in Materials Production—A Review. *Agronomy* **2020**, *10*, 308, doi:10.3390/agronomy10020308.
- Lewandowski, I.; Clifton-Brown, J.; Trindade, L.M. *et al.* Progress on optimizing miscanthus biomass production for the European bioeconomy: results of the EU FP7 project OPTIMISC. *Front. Plant Sci.* **2016**, *7*, Article 1620, doi:10.3389/fpls.2016.01620.
- Iqbal, Y.; Kiesel, A.; Wagner, M.; Nunn, C.; Kalinina, O.; Hastings, A. F. S. J.; Clifton-Brown, J. C.; Lewandowski, I. Harvest Time Optimization for Combustion Quality of Different Miscanthus Genotypes across Europe. *Front. Plant Sci.* **2017**, *8*, 727, doi: 10.3389/fpls.2017.00727.
- Iqbal, Y.; Lewandowski, I. Inter-annual variation in biomass combustion quality traits over five years in fifteen Miscanthus genotypes in south Germany. *Fuel Process. Technol.* **2014**, *121*, 47–55, doi:10.1016/j.fuproc.2014.01.003.
- Felten, D.; Froba, N.; Fries, J.; Emmerling, C. Energy balances and CO<sub>2</sub>-mitigation potentials of bioenergy crops (Miscanthus, rapeseed, maize) based on farming conditions in Western Germany. *Renew. En.* **2013**, *55*, 160–174, doi:10.1016/j.renene.2012.12.004.
- Greef, J. M.; Deuter, M.; Jung, C.; Schöndelmaier, J. Genetic diversity of European Miscanthus species revealed by AFLP fingerprinting. *Genet. Resour. Crop Evol.* **1997**, *44*, 185–195.
- Monti, A.; Zegada-Lizarazu, W.; Zanetti, F.; Casler, M. Chapter Two—Nitrogen Fertilization Management of Switchgrass, Miscanthus and Giant Reed: A Review. In *Advances in Agronomy*; Sparks, D.L., Ed.; Academic Press: Cambridge, MA, USA, 2019; Volume 153, pp. 87–119.
- Villaverde, J. J.; Liger, P.; Vega, A. d. Miscanthus x giganteus as a Source Of Biobased Products Through Organosolv Fractionation: A Mini Review. *TOASJ* **2010**, *4*, 102–110.
- Emmerling, C.; Pude, R. Introducing Miscanthus to the greening measures of the EU Common Agricultural Policy. *GCB Bioenergy* **2017**, *9*, 274–279, doi:10.1111/gcbb.12409.

19. Verordnung (EU) 2017/2393 des Europäischen Parlaments und des Rates vom 13. Dezember 2017 zur Änderung der Verordnungen (EU) Nr. 1305/2013 über die Förderung der ländlichen Entwicklung durch den Europäischen Landwirtschaftsfonds die Entwicklung des ländlichen Raums (ELER), (EU) Nr. 1306/2013 über die Finanzierung, die Verwaltung und das Kontrollsystem der Gemeinsamen Agrarpolitik, (EU) Nr. 1307/2013 mit Vorschriften über Direktzahlungen an Inhaber landwirtschaftlicher Betriebe im Rahmen von Stützungsregelungen der Gemeinsamen Agrarpolitik, (EU) Nr. 1308/2013 über eine gemeinsame Marktorganisation für landwirtschaftliche Erzeugnisse und (EU) Nr. 652/2014 mit Bestimmungen für die Verwaltung der Ausgaben in den Bereichen Lebensmittelkette, Tiergesundheit und Tierschutz sowie Pflanzengesundheit und Pflanzenvermehrungsmaterial“ Amtsblatt der Europäischen Union vom 29.12.2017, L350, 15-49.
20. Muthusamy, S. K.; Lenka, S. K.; Katiyar, A.; Chinnusamy, V.; Singh, A. K.; Bansal, K. C. Genome-Wide Identification and Analysis of Biotic and Abiotic Stress Regulation of C<sub>4</sub> Photosynthetic Pathway Genes in Rice. *Appl. Biochem. Biotechnol.* **2018**, doi:10.1007/s12010-018-2809-0.
21. Kellogg, E. A. C<sub>4</sub> photosynthesis. *Curr. Biol.* **2013**, 23, R594-599.
22. Teese, P. Intraspecific variation for CO<sub>2</sub> compensation point and differential growth among variants in a C<sub>3</sub>-C<sub>4</sub> intermediate plant. *Oecologia* **1995**, 102, 371-376.
23. Van der Weijde, T.; Kiesel, A.; Iqbal, Y.; Muylle, H.; Dolstra, O.; Visser, R. G. F.; Lewandowski, I.; Trindade, L. M. Evaluation of *Miscanthus sinensis* biomass quality as feedstock for conversion into different bioenergy products. *GCB Bioenergy* **2016**, 9, 176-190, doi:10.1111/gcbb.12355.
24. da Costa, R. M. F.; Lee, S. J.; Allison, G. G.; Hazen, S. P.; Winters, A.; Bosch, M. Genotype, development and tissue-derived variation of cell-wall properties in the lignocellulosic energy crop *Miscanthus*. *Ann. Bot.* **2014**, 114, 1265-1277, doi:10.1093/aob/mcu054.
25. Baker, P. W.; Winters, A.; Hale, M. D. C. Biodegradation of Different Genotypes of *Miscanthus* by Wood Rot Fungi. *BioResources* **2016**, 11, 4379-4391, doi:10.15376/biores.11.2.4379-4391
26. Sonnenberg, A. M.; Baars, J. J. P.; Visser, M. H.M.; Lavrijssen, B.; Hendrickx, P. M. Evaluation of shiitake strains (*Lentinula edodes*) on selective lignin degradation in *Miscanthus x giganteus*, TKI T&U: KV 1310-032, PPO/PRI report 2016-3, 2016, doi:10.18174/401882.
27. Li, Z.; Zhao, C.; Zha, Y. *et al.* The minor wall-networks between monolignols and interlinked-phenolics predominantly affect biomass enzymatic digestibility in *Miscanthus*. *PLoS one* **2014**, 9, e105115, doi:10.1371/journal.pone.0105115.
28. Hirayama, H.; Akiyama, T.; Tamai, A.; Nawawi, D.S.; Syafii, W.; Yokoyama, T.; Matsumoto, Y. Variation of the contents of biphenyl structures in lignins among wood species. *Holzforschung* **2019**, doi:10.1515/hf-2018-0196.
29. Schäfer, J.; Sattler, M.; Iqbal, Y.; Lewandowski, I.; Bunzel, M. Characterization of *Miscanthus* cell wall polymers. *GCB Bioenergy* **2019**, 11, 191-205, doi:10.1111/gcbb.12538.
30. Bergs, M.; Do, X.T.; Rumpf, J.; Völkerling, G.; Pude, R.; Monakhova, Y.; Konow, C.; Schulze, M. Harvesting Season Influence on Monolignol Ratio and Linkage in six different *Miscanthus* genotypes. *RSC Adv.* **2020**, 10, 10740-10751, doi:10.1039/c9ra10576j.
31. Rumpf, J.; Do, X.T.; Burger, R.; Monakhova, Y.; Schulze, M. *Biomacromolecules* **2020**, 21, 1929-1942, doi:10.1021/acs.biomac.0c00123.
32. Mazar, A.; Jemaa, N.; Wafa Al Dajani, W.; Marinova, M.; Perrier, M. Optimization of Lignin Recovery from the Pre-Hydrolysate of Kraft-Based Dissolving Pulp Production Processes. *Appl. Sci.* **2021**, 11, 454, doi:10.3390/app11010454.
33. El Hage, R.; Brosse, N.; Chruciel, L.; Sanchez, C.; Sannigrahi, P.; Ragauskas, A. Characterization of milled wood lignin and ethanol organosolv lignin from *Miscanthus*. *Polym. Degrad. Stab.* **2009**, 94, 1632-1638, doi:10.1016/j.polymdegradstab.2009.07.007.
34. El Hage, R.; Perrin, D.; Brosse, N. Effect of the pre-treatment severity on the antioxidant properties of ethanol organosolv *Miscanthus x giganteus* lignin. *Nat. Resour.* **2012**, 3, 29-34, doi:10.4236/nr.2012.32005.
35. El Hage, R.; Brosse, N.; Sannigrahi, P.; Ragauskas, A. Effects of process severity on the chemical structure of *Miscanthus* ethanol organosolv lignin. *Polym. Degrad. Stab.* **2010**, 95, 997-1003, doi:10.1016/j.polymdegradstab.2010.03.012.
36. Chan, J. M. W.; Bauer, S.; Sorek, H.; Sreekumar, S.; Wang, K.; Toste, F. D. Studies on the vanadium-catalyzed nonoxidative depolymerization of *Miscanthus giganteus*-derived lignin. *ACS Catal.* **2013**, 3, 1369-1377, doi:10.1021/cs400333q.

37. Luo, H.; Klein, I. M.; Jiang, Y.; Zhu, H.; Liu, B.; Kenttämä, H. I.; Abu-Omar, M. M. Total Utilization of Miscanthus Biomass, Lignin and Carbohydrates, Using Earth Abundant Nickel Catalyst. *ACS Sustainable Chem. Eng.* **2016**, *4*, 2316–2322, doi:10.1021/acssuschemeng.5b01776.
38. Vanderghem, C.; Richel, A.; Jacquet, N.; Blecker, C.; Paquot, M. Impact of formic/acetic acid and ammonia pre-treatments on chemical structure and physico-chemical properties of Miscanthus x giganteus lignins. *Polym. Degrad. Stab.* **2011**, *96*, 1761–1770, doi:10.1016/j.polymdegradstab.2011.07.022
39. Timilsena, Y. P.; Abeywickrama, C. J.; Rakshit, S. K.; Brosse, N. Effect of different pretreatments on delignification pattern and enzymatic hydrolysability of miscanthus, oil palm biomass and typha grass. *Bioresour. Technol.* **2013**, *135*, 82–88, doi: 10.1016/j.biortech.2012.09.010.
40. Groenewold, G. S.; Johnson, K. M.; Fox, S. C.; Rae, C.; Zarzana, C. A.; Kersten, B. R.; Rowe, S. M.; Westover, T. L.; Gresham, G. L.; Emerson, R. M. Pyrolysis Two-Dimensional GC-MS of Miscanthus Biomass: Quantitative Measurement using an Internal Standard Method. *Energy Fuels* **2017**, *31*, 1620–1630, doi:10.1021/acs.energyfuels.6b02645
41. del Río, J.C.; Rencoret, J.; Gutiérrez, A.; Elder, T.; Kim, H.; Ralph, J. Lignin Monomers from beyond the Canonical Monolignol Biosynthetic Pathway: Another Brick in the Wall. *ACS Sust. Chem. Eng.* **2020**, *8*, 4997–5012, doi:10.1021/acssuschemeng.0c01109.
42. Vanholme, R.; Demedts, B.; Morreel, K.; Ralph, J.; Boerjan, W. Lignin biosynthesis and structure. *Plant Physiol.* **2010**, *153*, 895–905, doi:10.1104/pp.110.155119.
43. Tolbert, A.; Akinoshio, H.; Khunsupat, R.; Naskar, A. K.; Ragauskas, A. J. Characterization and analysis of the molecular weight of lignin for biorefining studies. *Biofuels, Bioprod. Bioref.* **2014**, *8*, 836–856.
44. Bergs, M.; Einfluss von Miscanthus-Genotyp und Erntezeit auf Gehalt und Struktur von Lignin aus Organosolv-Verfahren. PhD Thesis, Rheinische Friedrich Wilhelms University Bonn, 2018-12-20. <https://nbn-resolving.org/urn:nbn:de:hbz:5n-53211>.
45. Bergs, M.; Völkerling, G.; Kraska, T.; Do, X.; Monakhova, Y.; Konow, C.; Pude, R.; Schulze, M. Miscanthus x giganteus Stem versus Leave-derived Lignins Differing in Monolignol Ratio and Linkage. *Int. J. Mol. Sci.* **2019**, *20*, 1200–1243; doi:10.3390/ijms20051200.
46. Montgomery, J.R.D.; Lancefield, C.S.; Miles-Barrett, D.M.; Ackermann, K.; Bode, B.E.; Westwood, N.J.; Lebl, T. Fractionation and DOSY NMR as Analytical Tools: From Model Polymers to a Technical Lignin. *ACS Omega* **2017**, *2*, 8466.
47. Monakhova, Y.; Diehl, B.W.K.; Do, X.T.; Witzleben, S.; Schulze, M. Novel method for the determination of average molecular weight of natural polymers based on 2D DOSY NMR and chemometrics: Example of heparin. *J. Pharm. Biomed. Anal.* **2018**, *149*, 128–132, doi:10.1016/j.jpba.2017.11.016.
48. Wahid, R.; Nielsen, S. F.; Hernandez, V. M.; Ward, A. J.; Gislum, R.; Jørgensen, U.; Møller, H. B. Methane production potential from Miscanthus sp: Effect of harvesting time, genotypes and plant fractions. *Biosyst. Eng.* **2015**, *133*, 71–80, doi:10.1016/j.biosystemseng.2015.03.005.
49. Scagline-Mellor, S.; Griggs, T.; Skousen, J.; Wolfrum, E.; Holásková, I. Switchgrass and Giant Miscanthus Biomass and Theoretical Ethanol Production from Reclaimed Mine Lands. *Bioenerg. Res.* **2018**, *11*, 562–573, doi:10.1007/s12155-018-9915-2.
50. Hafez, I.; Hassan, E. B. Rapid liquefaction of giant miscanthus feedstock in ethanol–water system for production of biofuels. *Energy Conv. Manag.* **2015**, *91*, 219–224, doi:10.1016/j.enconman.2014.12.01610.xxyy.
51. Sørensen, A.; Teller, P. J.; Hilstrom, T.; Ahring, B. K. Hydrolysis of Miscanthus for bioethanol production using dilute acid presoaking combined with wet explosion pre-treatment and enzymatic treatment. *Bioresour. Technol.* **2008**, *99*, 6602–6607, doi:10.1016/j.biortech.2007.09.091.
52. Cha, Y.-L.; An, G. H.; Yang, J.; Moon, Y.-H.; Yu, G.-D.; Ahn, J.-W. Bioethanol production from Miscanthus using thermotolerant *Saccharomyces cerevisiae* mbc 2 isolated from the respiration-deficient mutants. *Renew. Energ.* **2015**, *80*, 259–265, doi:10.1016/j.renene.2015.02.016.
53. Lupoi, J.S.; Singh, S.; Parthasarathi, R.; Simmons, B.A.; Henry, R.J. Recent innovations in analytical methods for the qualitative and quantitative assessment of lignin. *Renew. Sustain. Energy. Rev.* **2015**, *49*, 871–906, doi:10.1016/j.rser.2015.04.091.
54. Giraudeau, P. Quantitative 2D liquid-state NMR. *Magn. Res.Chem.* **2014**, *52*, 259–272.
55. Du, X.; Pérez-Boada, M.; Fernández, C.; Rencoret, J.; del Río, J. C.; Jiménez-Barbero, J.; Li, J.; Gutiérrez, A.; Martínez, A. T. Analysis of lignin-carbohydrate and lignin-lignin linkages after hydrolase treatment of xylan-lignin, glucomannan-lignin and glucan-lignin complexes from spruce wood. *Planta* **2014**, *239*, 1079–1090, doi:10.1007/s00425-014-2037-y.
56. Miscanthus nagara, Available online: [www.tinplant-gmbh.de](http://www.tinplant-gmbh.de) accessed on October 18, 2019.

57. Deuter, M. Miscanthus Plant Named “MBS 7001”, US Plant Patent PP22,033 P2, July 19, 2011.
58. Heaton, E. A.; Dohleman, F. G.; Miguez, A. F.; Juvik, J. A.; Lozovaya, V.; Widholm, J.; Long, S. P. Miscanthus: A Promising Biomass Crop. *Adv. Bot. Res.* **2010**, *56*, 75-135, doi:10.1016/S0065-2296(10)56003-8.
59. Friesen, P. C.; Peixoto, M. M.; Busch, F. A.; Johnson, D. C.; Sage, R. F. Chilling and frost tolerance in Miscanthus and Saccharum genotypes bred for cool temperate climates. *J. Exp. Bot.* **2014**, *65*, 3749-3758, doi:10.1093/jxb/eru105.
60. de Melo Peixoto, M.; Friesen, P. C.; Sage, R. F. Winter cold-tolerance thresholds in field-grown Miscanthus hybrid rhizomes. *J. Exp. Bot.* **2015**, *66*, 4415-4425, doi:10.1093/jxb/erv093.
61. Smith, L. L.; Allen, D. J.; Barney, J. N. Yield potential and stand establishment for 20 candidate bioenergy feedstocks. *Biomass Bioenergy* **2015**, *73*, 145-154, doi:10.1016/j.biombioe.2014.12.015.
62. Dong, H.; Green, S. V.; Nishiwaki, A.; Yamada, T.; Stewart, J.R.; Deuter, M.; Sacks, E. J. Winter hardiness of Miscanthus (I): Overwintering ability and yield of new Miscanthus x giganteus genotypes in Illinois and Arkansas. *GCB Bioenergy* **2019**, *11*, 691-705, doi:10.1111/gcbb.12588.
63. Bauer, S.; Sorek, H.; Mitchell, V.D.; Ibáñez, A.B.; Wemmer, D.E. Characterization of Miscanthus giganteus lignin isolated by ethanol organosolv process under reflux condition. *J. Agric. Food Chem.* **2012**, *60*, 8203-8212, doi:10.1021/jf302409d.
64. Gschwend, F. J. V.; Malaret, F.; Shinde, S.; Brandt-Talbot, A.; Hallett, J. P. Rapid pretreatment of Miscanthus using the low-cost ionic liquid triethylammonium hydrogen sulfate at elevated temperatures. *Green Chem.* **2018**, *20*, 3486-3498, doi:10.1039/C8GC00837J.
65. Brandt, L.; Chen, B. E.; van Dongen, T.; Welton, J. P. Structural changes in lignins isolated using an acidic ionic liquid water mixture. *Green Chem.* **2015**, *17*, 5019-5034, doi:10.1039/C5GC01314C.
66. Meng, X.; Parikh, A.; Seemala, B.; Kumar, R.; Pu, Y.; Christopher, P.; Wyman, C. E.; Cai, C. M.; Ragauskas, A. J. Fractionation of Organosolv Lignin Using Acetone:Water and Properties of the Obtained Fractions. *ACS Sustainable Chem. Eng.* **2017**, *5*, 1, 580-587, doi:10.1021/acssuschemeng.6b01955.
67. Cheng, K.; Sorek, H.; Zimmermann, H.; Wemmer, D. E.; Pauly, M. Solution-State 2D NMR Spectroscopy of Plant Cell Walls Enabled by a Dimethylsulfoxide-d<sub>6</sub>/1-Ethyl-3-methylimidazolium Acetate Solvent. *Anal. Chem.* **2013**, *85*, 3213-3221, doi:10.1021/ac303529v.
68. Sluiter, A.; Hames, B.; Hyman, D.; Payne, C.; Ruiz, R.; Scarlata, C.; Sluiter, J.; Templeton, D.; Wolfe, J. *Determination of Total Solids in Biomass and Total Dissolved Solids in Liquid Process Samples*; NREL Technical Report No. NREL/TP-510-42621; National Renewable Energy Laboratory: Golden, CO, USA, 2008; pp. 1-6.
69. Pude, R.; Treseler, C.H.; Trettin, R.; Noga, G. Suitability of Miscanthus genotypes for lightweight concrete. *Die Bodenkultur* **2005**, *56*, 61-69.
70. Kim, G.-H.; Um, B.-H. Fractionation and characterization of lignins from Miscanthus via organosolv and soda pulping for biorefinery applications. *Int. J. Biol. Macromol.* **2020**, *158*, 443-451, doi:10.1016/j.ijbiomac.2020.04.229.
71. Walbrück, K.; Maeting, F.; Witzleben, S.; Stephan, D. Natural Fiber-Stabilized Geopolymer Foams—A Review. *Materials* **2020**, *13*, 3198; doi:10.3390/ma13143198.
72. Kraska, T.; Kleinschmidt, B.; Weinand, J.; Pude, R. Cascading use of as growing substrate in soilless Miscanthus cultivation of vegetables (tomatoes, cucumbers) and subsequent direct combustion. *Scientia Hort.* **2018**, *235*, 205-213, doi: 10.1016/j.scienta.2017.11.032.
73. Rinaldi, R.; Jastrzebski, R.; Clough, M.T.; Ralph, J.; Kennema, M.; Bruijninx, P.C.; Weckhuysen, B.M. Paving the Way for Lignin Valorisation: Recent Advances in Bioengineering, Biorefining and Catalysis. *Angew. Chem. Int. Ed.* **2016**, *55*, 8164-8215, doi:10.1002/anie.201510351.
74. Schutyser, W.; Renders, T.; Van den Bosch, S.; Koelewijn, S.F.; Beckham, G.T.; Sels, B.F. Chemicals from lignin: An interplay of lignocellulose fractionation, depolymerisation, and upgrading. *Chem. Soc. Rev.* **2018**, *47*, 852-908, doi:10.1039/C7CS00566K.
75. Alzagameem, A.; El Khaldi-Hansen, B.; Kamm, B.; Schulze, M. Lignocellulosic biomass for energy, biofuels, biomaterials, and chemicals. In *Biomass and Green Chemistry*, 1st ed.; Vaz, S., Jr., Ed.; Springer International Publishing: Basel, Switzerland, 2018; pp. 95-132, ISBN 978-3-319-66736-2, doi:10.1007/978-3-319-66736-2.
76. Sun, Z.; Fridrich, B.; de Santi, A.; Elangovan, S.; Barta, K. Bright Side of Lignin Depolymerization: Toward New Platform Chemicals. *Chem. Rev.* **2018**, *118*, 614-678, doi: 10.1021/acs.chemrev.7b00588.
77. Collins, M.N.; Nechifor, M.; Tanasă, F.; Zănoagă, M.; McLoughlin, A.; Stróżyk, M.A.; Culebras, M.; Teacă, C.-A. Valorization of lignin in polymer and composite systems for advanced engineering applications – A review. *Int. J. Biol. Macromol.* **2019**, *131*, 828-849, doi:10.1016/j.ijbiomac.2019.03.069

78. Lignin Market—Forecasts from 2018 to 2023; Knowledge Sourcing Intelligence LLP: Noida, India, 2018; 104 p.; Lignin Market Analysis by Product (Lignosulphonates, Kraft Lignin, Organosolv Lignin) by Application (Macromolecules, Aromatics), by Region (North America, Europe, APAC, Central & South America, MEA), and Segment Forecasts, 2014–2025; ID: 4240413 Report; Grand View Research: San Francisco, CA, USA, 2017; 110p.
79. Ziegłowski, M.; Trosien, S.; Rohrer, J. et al., Reactivity of Isocyanate-Functionalized Lignins: A Key Factor for the Preparation of Lignin-Based Polyurethanes. *Front. Chem.* **2019**, *7*, 562, doi:10.3389/fchem.2019.00562.
80. Klein, S.E.; Rumpf, J.; Kusch, P.; Albach, R.; Rehahn, M.; Witzleben, S.; Schulze, M. Utilization of Unmodified Kraft Lignin for the Preparation of Highly Flexible and Transparent Polyurethane Coatings. *RSC Adv.* **2018**, *8*, 40765–40777, doi:10.1039/c8ra08579j.
81. Klein, S.E.; Rumpf, J.; Rehahn, M.; Witzleben, S.; Schulze, M. Biobased Flexible Polyurethane Coatings Prepared from Kraft Lignin: One-Pot Synthesis and Antioxidant Activity. *J. Coat. Technol. Res.* **2019**, *16*(6), 1543–1552, doi:10.1007/s11998-019-00201-w.
82. Klein, S.E.; Alzagameem, A.; Rumpf, J.; Korte, I.; Kreyenschmidt, J.; Schulze, M. Antimicrobial Activity of Lignin-Derived Polyurethane Coatings Prepared from Unmodified and Demethylated Lignins. *Coatings* **2019**, *9*, 494–510, doi:10.3390/coatings9080494.
83. Kalami, S.; Arefmanesh, M.; Master, E.; Nejad, M. Replacing 100 % of phenol in phenolic adhesive formulations with lignin. *J. Appl. Polym. Sci.* **2017**, 45124, doi:10.1002/APP.45124.
84. Alzagameem, A.; El Khaldi-Hansen, B.; Büchner, D.; Larkins, M.; Kamm, B.; Witzleben, S.; Schulze, M. Environmentally Benign Lignin-based Antioxidants isolated from Lignocellulose Feedstock. *Molecules* **2018**, *23*, 2664–8269, doi:10.3390/molecules23102664.
85. Alzagameem, A.; Klein, S.E.; Bergs, M.; Do, X.T.; Korte, I.; Dohlen, S.; Kreyenschmidt, J.; Kamm, B.; Larkins, M.; Schulze, M. Antimicrobial Activity of Lignin and Lignin-Derived Cellulose and Chitosan Composites Against Selected Pathogenic and Spoilage Microorganisms. *Polymers* **2019**, *11*, 670–688, doi:10.3390/polym11040670.
86. Morales, A.; Labidi, J.; Gullón, P. Assessment of Green Approaches for the Synthesis of Physically Crosslinked Lignin Hydrogels. *J. Ind. Eng. Chem.* **2020**, *81*, 475–487, doi:10.1016/j.jiec.2019.09.037.
87. Witzler, M.; Vermeeren, S.; Kolevator, R.; Haddad, R.; Gericke, M.; Heinze, T.; Schulze, M. Evaluation of the Release Kinetics from Alginate Beads Coated with Polyelectrolyte Layers for Sustained Drug Delivery (submitted to ACS Biomacromolecules, manuscript ID bm-2020-01540r).
88. Liu, R.; Dai, L.; Xu, C.; Wang, K.; Zheng, C.; Chuanling, S. Lignin-Based Micro- and Nanomaterials and their Composites in Biomedical Applications. *ChemSusChem* **2020**, *13*, 4266–4283, doi:10.1002/cssc.202000783.
89. Rumpf, J.; Do, X.T.; Burger, R.; Monakhova, Y.; Schulze, M. Lignin Types and Properties. In: *Lignin-Based Materials for Biomedical Applications: Preparation, Characterization and Implementation*, Hélder Almeida Santos Sr., Patrícia Isabel Tavares Figueiredo (Eds.), Elsevier (in print).
90. Witzler, M.; Alzagameem, A.; Bergs, M.; El Khaldi-Hansen, B.; Klein, S.E.; Hielscher, D.; Kamm, B.; Kreyenschmidt, J.; Tobiasch, E.; Schulze, M. Lignin-Derived Biomaterials for Drug Release and Tissue Engineering. *Molecules* **2018**, *23*, 1885–1907, doi:10.3390/molecules23081885.
91. Lan, W.; Yue, F.; Rencoret, J.; Del Río, J.C.; Boerjan, W.; Lu, F.; Ralph, J. Elucidating Tricin-Lignin Structures: Assigning Correlations in HSQC Spectra of Monocot Lignins. *Polymers* **2018**, *10*, 916–922, doi:10.3390/polym10080916.
92. Boeriu, C.G.; Fitigau, F.I.; Gosselink, R.J.A.; Frissen, A.E.; Stoutjesdijk, J.; Peter, F. Fractionation of five technical lignins by selective extraction in green solvents and characterization of isolated fractions. *Ind. Crops Prod.* **2014**, *62*, 481–490, doi:10.1016/j.indcrop.2014.09.019.
93. Lancefield, C.S.; Constant, S.; de Peinder, P.; Bruijninx, P.C.A. Linkage Abundance and Molecular Weight Characteristics of Technical Lignins by Attenuated Total Reflection-FTIR Spectroscopy Combined with Multivariate Analysis. *ChemSusChem* **2019**, *12*, 1139–1146, doi:10.1002/cssc.201802809.
94. Li, X.; Wei, Y.; Xu, J.; Xu, N.; He, Y. Quantitative visualization of lignocellulose components in transverse sections of moso bamboo based on FTIR macro- and micro-spectroscopy coupled with chemometrics. *Biotechnol. Biofuels* **2018**, *11*, 263–279, doi:10.1186/s13068-018-1251-4.
95. Uddin, M.N.; Nayeem, J.; Islam, M.S.; Jahan, M.S. Rapid determination method of dissolving pulp properties by spectroscopic data and chemometrics. *Biomass Convers. Biorefin.* **2019**, *9*, 585–592, doi:10.1007/s13399-019-00383-8.

96. Colares, C.J.G.; Pastore, T.C.M.; Coradin, V.T.R.; Camargos, J.A.A.; Moreira, A.C.O.; Rubimb, J.C.; Braga, J.W.B. Exploratory Analysis of the Distribution of Lignin and Cellulose in Woods by Raman Imaging and Chemometrics. *J. Braz. Chem. Soc.* **2015**, 1-10, doi:10.5935/0103-5053.20150096.
97. Aguilera-Saeza, L.M.; Arrabal-Campos, F.M.; Callejon-Ferre, A.J.; Suarez Medina, M.D.; Fernandez, I. Use of multivariate NMR analysis in the content prediction of hemicellulose, cellulose and lignin in greenhouse crop residues. *Phytochemistry* **2019**, 158, 110–119, doi:10.1016/j.phytochem.2018.11.013.
98. Mancini, M.; Duca, D.; Toscano, G. Laboratory customized online measurements for the prediction of the key-parameters of biomass quality control. *J. Near Infrared Spectr.* **2019**, 1–11, doi:10.1177/0967033518825341journals.sagepub.com/home/jns.
99. Christou, C.; Agapiou, A.; Kokkinofa, R. Use of FTIR spectroscopy and chemometrics for the classification of carobs origin. *J. Adv. Res.* **2018**, 10, 1–8, doi:10.1016/j.jare.2017.12.001.