

Article

MULTIVARIATE ANALYSIS OF STRUCTURAL AND FUNCTIONAL NEUROIMAGING CAN INFORM PSYCHIATRIC DIFFERENTIAL DIAGNOSIS

Drozdstoy Stoyanov, Sevdalina Kandilarova*, Katrin Aryutova*, Rositsa Paunova*, Anna Todeva-Radneva*, Adeliya Latypova** and Ferath Kherif***

*Department of Psychiatry and Medical Psychology, and Research Institute, Medical University - Plovdiv

**Centre for Research in Neuroscience - Department of Clinical Neurosciences, CHUV - UNIL

* Correspondence: drozdstoy.stoyanov@mu-plovdiv.bg

Abstract: Traditional psychiatric diagnosis has been over-reliant on either self-reported measures (introspection) or clinical rating scales (interviews). This produced the so-called explanatory gap with the bio-medical disciplines, such as neuroscience, which are supposed to deliver biological explanations of disease. In that context the neuro-biological and clinical assessment in psychiatry remained discrepant and incommensurable under conventional statistical frameworks. The emerging field of translational neuroimaging attempted to bridge the explanatory gap by means of simultaneous application of clinical assessment tools and functional magnetic resonance imaging, which also turned out to be problematic when analyzed with standard statistical methods such as the two-sample t-test.

In order to overcome this problem our group designed a novel machine learning technique, multivariate linear method (MLM) which can capture convergent data from voxel-based morphometry, functional resting state and task-related neuroimaging and the relevant clinical measures. In this paper we report results from convergent cross-validation of biological signatures of disease in a sample of patients with schizophrenia as compared to depression. Our model provides evidence that the combination of the neuroimaging and clinical data in MLM analysis can inform the differential diagnosis in terms of incremental validity to reach 90 % accuracy of the prediction.

Keywords: multivariate linear method, validation, diagnosis, discriminative, signatures of disease, schizophrenia, depression

1. Introduction

A major endeavor in contemporary psychiatric research, which includes a number of individual studies and meta-analyses, is to determine conceivable structural and functional abnormalities in mental disorders in order to define their etiopathophysiology, yet the results remain inconsistent. However, a methodological synthesis integrating several modalities such as structural, resting state and task-related functional Magnetic Resonance Imaging (fMRI) data sets may contribute to a better understanding of the neurobiological mechanisms underlying specific disorders and inform the diagnostic process in clinical work.

Multimodal neuroimaging approaches play an essential role in elucidating the structural and functional properties of a healthy or abnormal brain. Such computational methods are also valuable for clinical research on the dynamics of disease development (1).

An illustration is multimodal fusion, where the objective is to focus on the strength of each imaging modality and its interrelationships as a compound entity instead of an independent analysis. Thus, each imaging approach represents an aspect of the function and/or structure of the brain and the data fusion translates it into a collaborative space, providing an important tool to help uncover the underlying pathobiological mechanisms of mental disorders. In addition, the method allows for a composite analysis including augmentation of the neuroimaging sequences with modalities such as genetic data (2), aiming at the possibility for computational classification of psychiatric disorders (3,4). Although the existing methodological gaps are a significant confounding factor for the clinical application of such approaches (5), scientific research has provided substantial evidence for the potential future implications in the study, diagnosis and treatment of disorders of the central nervous system (CNS). Latest advancements in data fusion transcend the usage of conventional general linear model-based approaches attempting a convergence of several (task) fMRI data sets from the same individual in order to specify common versus specific sources of activity (4). Furthermore, an evidence-based determination of the functional significance of certain brain regions and activation changes in brain disorders enhances the confidence and reliability of the methods. The reciprocal interpolation of functional and structural modalities may also provide more informative insight into existing alterations of brain architecture and/or connectivity patterns (6).

Investigating several data sets (e.g., combining functional Magnetic-Resonance Imaging, Diffusion Tensor Imaging and structural Magnetic-Resonance Imaging (fMRI-DTI-sMRI)) in a comparison between patient and control groups is an innovative attempt, which may be used in the study of various neuropsychiatric disorders or subsets of a particular disorder (such as psychotic or non-psychotic bipolar disorder) (7). In addition, the utilization of machine learning algorithms as an analytical entity of fMRI data offers the opportunity not only to expand the interdisciplinary exploration of the etiopathogenesis of psychiatric disorders but also accelerate the process of translation between science and clinical practice. (8).

One of the critical caveats in the interpretation of MRI data in psychiatry is multiple realizability (9). Alterations in different regions are reported to be implicated in the pathogenesis of one and the same phenomenon in psychopathology (symptom or sign) and different clinical phenomena are often explained by changes in one and the same brain region. This may well be due to confound originating from the research design such as sample structure, criteria for exclusion and inclusion, gender, and age co-variables. However, it may also be due to the biased application of one or another MRI modality (structural, functional resting state and task related). Therefore, we aimed at exploring the contribution of each MRI modality in the explanation of the underlying variance of brain structure and function in two main diagnostic groups: schizophrenia and depression.

Our research team headed by prof. Drozdostoy Stoyanov, MD, PhD, DMSc has implemented a novel paradigm design directed towards the cross-validation between one of the existing diagnostic tools in psychiatry (self-assessment scales) and fMRI. We procured three separate data modalities for each subject, namely structural, resting state and task related fMRI. This endeavor intended to elucidate the relationship between the dimensions of phenomenology and neurophysiology, thus abridging the gap between subjective clinical assessment and the necessity for reliable and valid biomarkers for mental disorders. Moreover, our study incorporated machine learning in the statistical analysis to further investigate transdiagnostic features on an individual and group level (10–12). We used Multivariate Linear Model (MLM) as a method, which not only permits the processing of vastly dimensional data (13), but has also been established as reliable in the application to different neuroimaging techniques (14,15).

In this context, the aim of the present study is to attempt the definition of the fundamental biological signatures of paranoia and depression via the differentiation of the fMRI signal in the aforementioned modalities. On the other hand, we pose the question whether and to what extent the prediction of clinical diagnostic classes may be enhanced by overlaying different methodological dimensions in comparison to a single modality validation. Our lead hypothesis is woven into the

prospect of measuring differential activation, down- or up-regulation of the respective pathways/brain networks implicated in schizophrenia and depression by means of machine learning models as a step towards unveiling the neural correlates of these debilitating psychiatric conditions.

2. Materials and Methods

2.1 Participants

The current study recruited a total of 44 patients of whom 19 with schizophrenia (mean age 39.3 ± 14.8 y, 9 males), and 25 with depression ($n=25$, mean age 44.2 ± 12.1 y, 9 males): unipolar ($n=10$, mean age 43.7 ± 13.2 y, 5 males) and bipolar ($n=15$, mean age 44.5 ± 11.8 y, 4 males). Each patient was assessed by an experienced psychiatrist (D.S, S.K., K. A.) by means of a general clinical interview and the structured Mini International Neuropsychiatric Interview (M.I.N.I 6.0) (16). The Montgomery–Åsberg Depression Rating Scale (MADRS) (17) and the Positive and Negative Syndrome Scale (PANSS) (18) were used in addition to assess the severity of the symptoms. The cut-off for inclusion of depressed patients was set to a minimal total MADRS score of 20, while for schizophrenia and individual score on PANSS P1 (delusions) or P6 (suspiciousness) of 3 was required. All patients had a steady pharmacotherapeutic regime within 14 days before inclusion.

Subjects were excluded in the following cases: age under 18 or over 65, presence of metal implants in the body that are not compatible with MRI, comorbid mental disorders, any severe somatic or neurological disease, and history of traumatic brain injury with loss of consciousness. Before enrollment written informed consent complying with the Declaration of Helsinki was obtained from each participant. The University's Ethics Committee has approved the protocol of the study (ID: P-369/29.05.2015).

2.2 Image acquisition

All participants underwent a scanning procedure performed on a 3T MRI system (GE Discovery 750w). The protocol included three different MRI sequences: first a high resolution structural scan (Sag 3D T1 FSPGR), slice thickness 1 mm, matrix 256×256 , TR (time of relaxation) 7.2 msec, TE (echo time) 2.3 msec, and flip angle 12° , followed by a resting state functional scan with eyes closed (2D EPI sequence), slice thickness 3 mm, 36 slices, matrix 64×64 , TR 2000 msec, TE – 30 msec, flip angle 90° , 192 volumes and concluding with a task sequence (see following paragraph), slice thickness 3 mm, matrix 64×64 , TR 2000 msec, TE 30 msec, and flip angle 90° , 256 volumes. Each of the two functional scans started with 5 dummy time series which were automatically excluded from the image processing.

2.3 fMRI task

E-prime software (Psychology Software Tools, Inc) was used to construct the paradigm which consisted of 32 s blocks with three different active conditions and one 20 s block with the rest condition. As it has been extensively described in our previous work (11), a brief summary will be given in the following lines.

The stimuli were written statements from the von Zerssen's paranoia-depression scale and from a questionnaire of general interests. There were Depression Specific (DS) blocks with the statements from the depression subscale ("I cry easily", "I feel melancholic and depressed"), and Paranoid Specific (PS) blocks from the paranoia subscale ("Somebody wants to kill me"). The Diagnostically Neutral (DN) blocks included statements from a questionnaire about general interests and likes (such as "I like to repair household appliances" etc.). The participants were instructed to read the statements carefully and to respond with a button press according to their level of agreement. There were four possible answers ("completely true", "mostly true", "somewhat true", "not true") and respectively four

response buttons (upper left, lower left, lower right, upper right) presented on the screen under each statement. The paradigm consisted of four active blocks of each type, alternating between the three conditions but always followed by the rest condition - fixation cross (DS_rest_DN_rest_PS_rest...).

2.4 MRI data analysis

2.4.1 Voxel-based morphometry

SPM 12 (Statistical Parametric Mapping, <http://www.fil.ion.ucl.ac.uk/spm/>) software running on MATLAB R2020 for Windows was used for the analysis of the structural MRI images. Spatial preprocessing included first individual segmentation followed by normalization to the Montreal Neurological Institute (INM) template created with a diffeomorphic anatomical recording using exponentiated lie algebra (DARTEL; Ashburner, 2007). Finally, the resulting modulated grey matter volume estimate was smoothed with a 3D Gaussian kernel (8 mm full width at half height, FWHM) to account for the individual anatomical differences. Total intracranial volume (TIV) was derived for each participant and included as a covariate in the analyses to account for global individual differences in head size.

2.4.2 Task-related functional data processing

The functional images acquired during the task were realigned, co-registered with the anatomical image, normalized to MNI space, and spatially smoothed with an 8 mm FWHM Gaussian kernel. General Linear Model (GLM) was then applied to the time series, convolved with a canonical hemodynamic response function (HRF). The design matrix included the six rigid body motion correction parameters as covariates of no interest. Individual F-contrasts were defined for all active conditions orthogonal to the motion effect to be further used for the MLM analysis.

2.4.3 Resting state data processing – whole brain residual partial activations

The images acquired during resting state were processed in the same way as the task-related fMRI images – realignment, co-registration, normalization and smoothing. These processing steps were followed by the application of a GLM with a canonical HRF convolution to the time series. The individual residual mean square images were used for the consequent first level MLM analysis.

2.4.4 MLM analysis

To identify the brain signatures that explain most of the differences between diagnoses and between different mapping modalities, we used a multivariate method, namely the Multivariate Linear Model (MLM). MLM is a data driven approach which has shown great potential for summarizing and capturing the components of individual differences across multiple areas. The method has wide applicability for statistical reference, predictive approach, and statistical mapping. (<https://github.com/LREN-CHUV/MLM>)

We extended the MLM root method to a multilevel approach in order to capture multi-scale latent variables in hierarchically organized data.

To adapt to our data sets and the corresponding assumptions, we have implemented a two-step procedure. In the first step, we performed an MLM analysis of each of the modalities with the constraints operationalized in an F-test for the differences between the two diagnostic groups. The procedure identified the optimal brain mapping signature (or eigen-image) that discriminates between the two groups of diseases. The method also produced a subsystem load displaying the discriminative information but at a subject level.

At the second step, we also performed an MLM analysis using the results (clean image and eigen-components) from the first step. Thus, we attempted to find the optimal combination from the previous mapping which best explained the difference between the diagnostic groups, so that theoretically we could identify up to 3 of these components.

2.5 Statistical analysis

SPSS 22.0 for Windows was used for the statistical analysis of the demographic and clinical characteristics of the participants. Continuous variables were tested with Student's t-test while categorical ones - with Chi-square test. The threshold for the level of significance was set to $p < 0.05$ for all tests.

3. Results

3.1 Demographic and clinical characteristics

The two patient groups were not significantly different in their demographic and clinical characteristics such as age, education level, age at onset, illness duration, etc. Table 1 shows the characteristics we have controlled for in the sample.

Table 1. Demographic and clinical characteristics of the participants

	Schizophrenia patients (n=19)	Depressed patients (n=25)	Statistical significance
Age (mean \pm SD)	39.3 \pm 14.8	44.2 \pm 12.1	0.231 ^a
Sex (M/F)	9/10	9/16	0.542 ^b
Education (years)	13.5 \pm 2.8	14.1 \pm 3.5	0.548 ^a
Age at onset (years)	27.1 \pm 9.1	33.8 \pm 12.4	0.139 ^a
Illness duration (months)	142.8 \pm 121.6	121.8 \pm 84.5	0.505 ^a
Episode duration (weeks)	15.4 \pm 14.1	11.9 \pm 10.4	0.403 ^a

SD – Standard Deviation, ^aIndependent samples t-test, ^b χ^2 - test, * $p < 0.05$.

3.2 MLM analysis

Modality specific MLM.

MLM was applied separately to the data from all three modalities combined with a similar model that included a covariate for patient groups and adjustment covariates (age, sex, IVR).

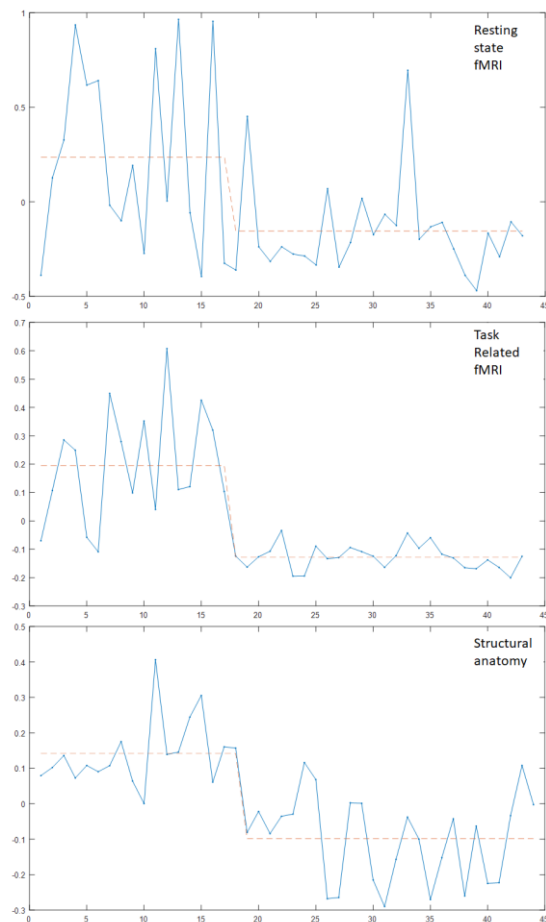


Figure1. MLM components and subjects loading for each of the modality. The blue curve corresponds to the calculated components and the red one to its projections in the space defined by the condition of interest, i.e., the differences between the two diagnostics groups.

Figure 1.a shows the specific components identified using the resting state fMRI data.

Figure 1.b shows the eigen-components which best summarize the fMRI task-related data.

Figure 1.c shows the specific components for the anatomical differences between the two patient groups

MLM analyses across the modalities:

For this analysis, we used the electronic images from the first stage as input. Note that the subject loads can be used instead, and the results will remain the same (the reason is that subject spaces and picture space are doubled, i.e., one space can be derived from another by a simple matrix transformation). Presently, we report the results found in the image spaces.

We found that all eigenvalues were not null for the 3 components, which means they are all informative. The variance explained was respectively (35%, 33% and 32%). Figure 2. shows the optimal contribution to each of these components.

The first component shows an equal contribution of the 3 modalities. FIG. 2b) shows the contribution (positive or negative) of the voxels to the mapping which corresponds to the first component.

The second component shows a difference between the idle state and the functional data related to the task. The contribution of the structural anatomy is low. Figure 2c shows the mapping corresponding to the third component, which is characterized by a larger contribution of the structural modality.

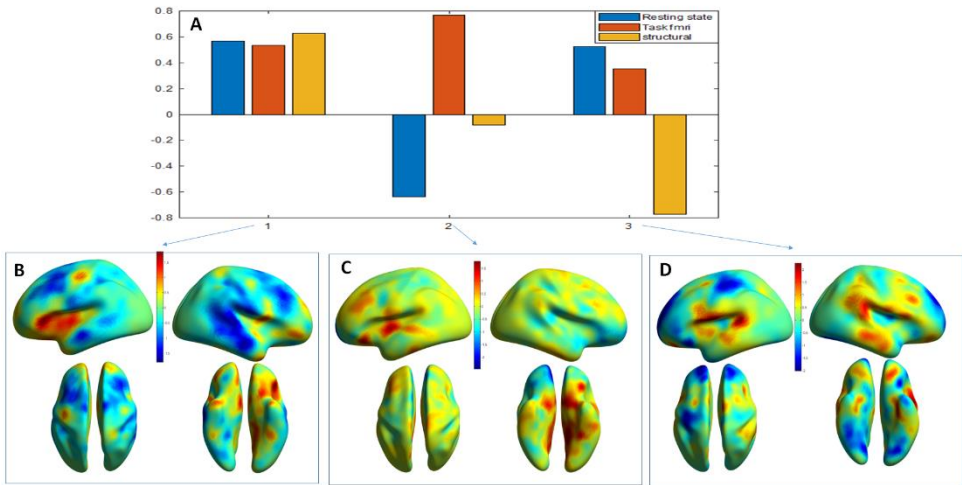


Figure 2: MLM analysis across modalities: A. Bar plot with the contribution of each modality to the 3 components. B, C and D. Principal components

Figures 3, 4 and 5 show the mapping for all 3 components, we have summarized the same information at the regional level (based on the subdivision of the Neuromorphometric atlas).

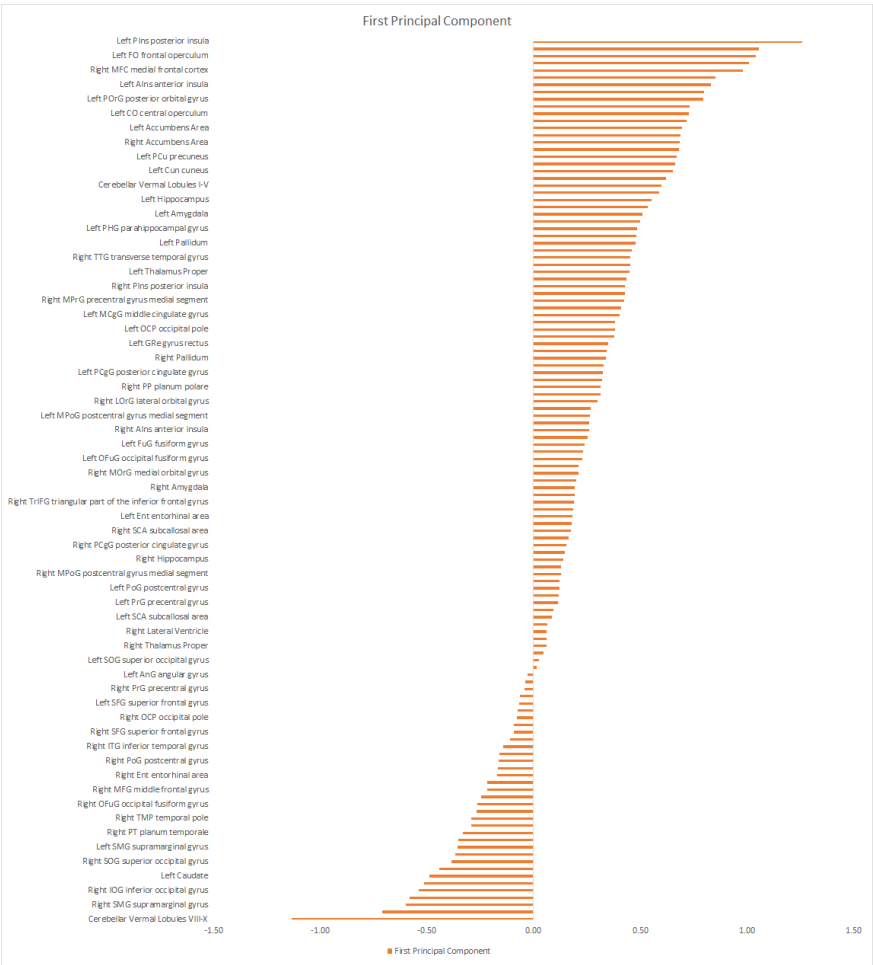


Figure 3. Brain contribution at the regional level for the first component.

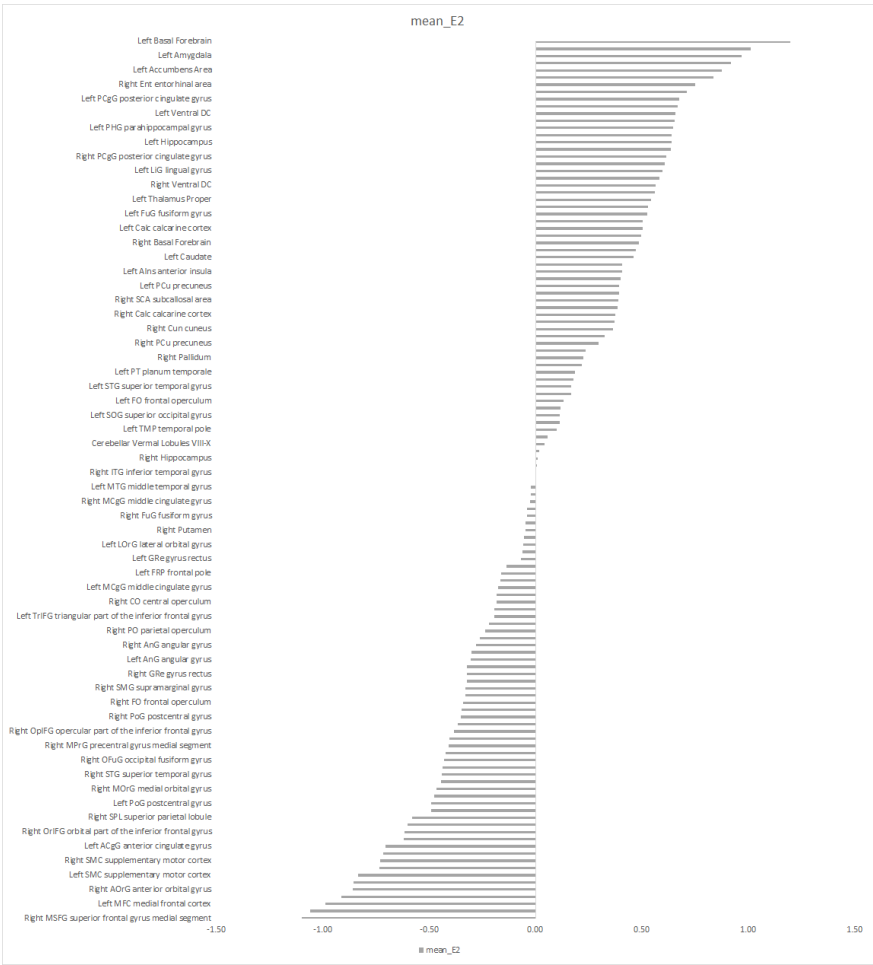


Figure 4. Brain contribution at the regional level for the second component.

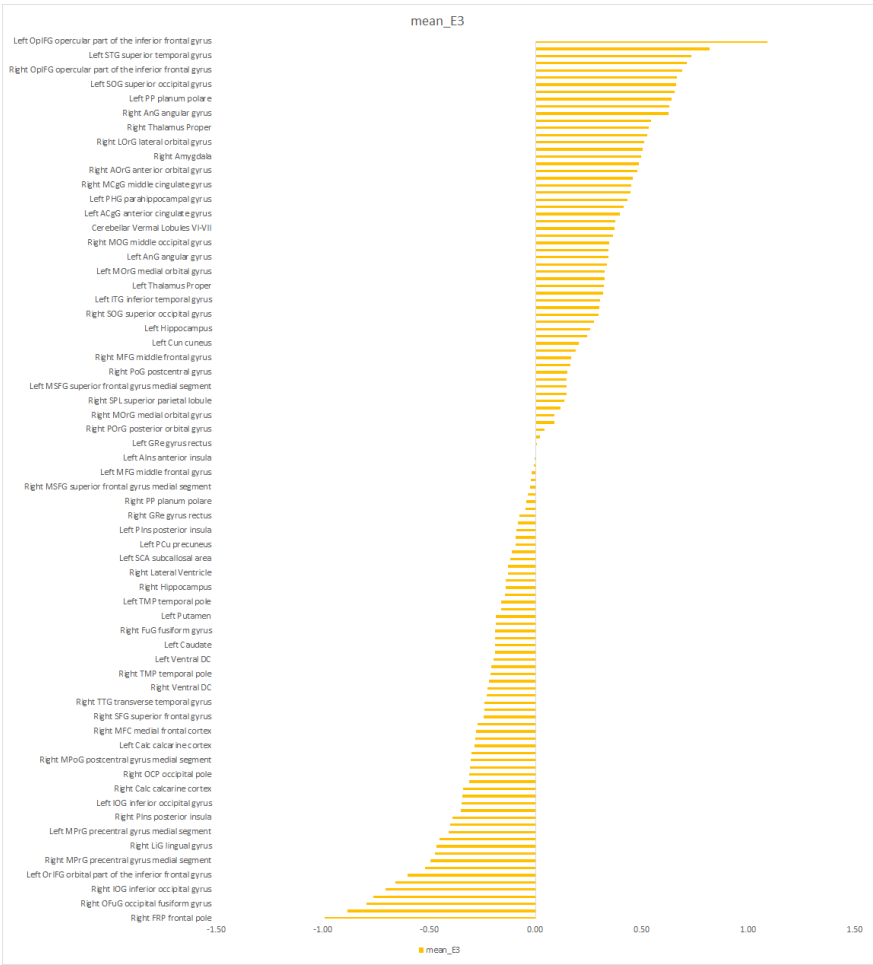


Figure 5. Brain contribution at the regional level for the first component. This section may be divided by subheadings. It should provide a concise and precise description of the experimental results, their interpretation as well as the experimental conclusions that can be drawn.

4. Discussion

The main highlight of our study demonstrates the differential contribution of the various MRI modalities as combined in principal components (PC) to brain signatures with high capacity for discrimination of the two diagnostic entities studied (schizophrenia and depression). In PC1 the three modalities have convergent cross-validation, i.e., explanatory power of structural, resting state and functional MRI which remain in one and the same direction and encompass mainly dopamine and noradrenergic (DA and NA-ergic) pathways with nodes in the Default Mode Network (DMN). PC 2 is composed of divergent cross-validation of resting state and task-related functional MRI, which means that the direction of the explanatory power of the structural and functional measures is exactly the opposite. This PC includes the effort-mode network and subcortical areas with mainly Glu/GABAergic mediation/modulation. The PC3 is driven by MRI signal in the structural MRI and covers temporal and occipital areas.

In the brain signature corresponding to PC1 the regions with the highest discriminative power were localized in left sided Planum Polare (PP), transverse temporal gyrus, opercular and orbital part of the Inferior Frontal Gyrus (IFG), insular cortex (both anterior and posterior), medial frontal cortex, basal forebrain and accumbens area (both left and right). The relevance of these regions to the two diagnostic entities studied will be discussed in the following lines.

The left Planum Polare (PP) was the most prominent structure in our study that was correlated with the most discriminative value in all three brain signatures. PP is part of the Superior Temporal Gyrus (STG), which is involved in auditory processing, including language, but also has been implicated as a critical structure in social cognition. The STG has been found to be active during processing of emotional facial expressions (19). It was also shown to be an essential structure in the

pathway of the amygdala and prefrontal cortex, both of which are involved in processes of social cognition (20). Neuroimaging studies have found that people with schizophrenia have structural abnormalities in their STG (21). Dysfunction in the primary auditory cortex in the anterior and middle STG and the auditory association cortex in the posterior STG is assumed to play a role in causing auditory perceptual disturbances and impaired organization of thought, respectively (22). There is convergent data that auditory hallucinations are related to a functional network of brain areas, namely auditory and language regions of the STG and Inferior Parietal Gyrus (IPG), and speech motor regions in the IFG (23–25).

The portion of the frontal lobe that overlies the insular cortex is the opercular part of the inferior frontal gyrus (26). The inferior frontal gyrus/anterior insula (IFG/AI) region is involved in complex attention and working memory processing. Ventrolateral corticolimbic control pathways, including IFG/AI, and mediodorsal corticolimbic control pathways, along with dorsal Anterior Cingulate Cortex (ACC) regions, perform partially separable but interconnected roles in adaptive behavior under environmental circumstances that vary in the degree of predictability (27). The IFG/AI is one of the regions that activate when exhibiting anxiety and stress induced behavior (28). In addition, antidepressant effects and sleep deprivation were associated with an activity change from IFG/AI to dorsolateral prefrontal cortex (29).

Nucleus accumbens (NAcc) is a central output for dopaminergic projections and is engaged in the control of emotions and affects integration. This region also receives glutamatergic input from the hippocampus and the prefrontal cortex (30). The ventral tegmental area, which is also a dopaminergic nucleus sends projections to the NAcc and the medial prefrontal cortex. The ventromedial prefrontal cortex (VMPFC) and midbrain are among the structures with the strongest partial correlations with the basal forebrain. The DMN is suggested to have a potential role in the integration of cholinergic and DA-ergic networks related to memory and emotions (30).

DA-ergic and NA-ergic terminals are also widely distributed in cortical areas. Stimulants of the Central Nervous System (CNS) like amphetamines are known to significantly increase the extracellular level of DA and NA in functional connectivity networks (31). Administration of dextro-amphetamine (dAMPH) increases both DA and NA in the prefrontal cortex, but only DA in the striatum. As such, the regulation of connectivity networks in the striatum can be determined primarily by the release of DA, whereas the cortical functional connectivity is both affected by changes of DA and NA. The inverted U-hypothesis of DA-ergic modulation, suggesting that there is an optimal level of DA-ergic stimulation, with both too little and too much DA negatively impacting behavior, supports this finding (32). DA strengthens the connection between the Frontoparietal Control Network (FPCN) and the DMN in the resting state where internal cognition dominates, thus reducing the relation between the FPCN and the Dorsal Focus Network (30). These connections reveal the important role of network interaction in the modulation of attention (33).

The regions of the second brain signature that demonstrated the highest contribution to the discriminative power of PC2 were localized in the left PP, bilateral Supplementary Motor Cortex (SMC), bilateral MFC, left anterior and left posterior lingulate gyrus and right Frontal Pole (FP) along with subcortical structures such as bilateral amygdalae, left hippocampus and left parahippocampal gyrus. The modalities that contributed to PC2 were the task-related and the resting state functional MRI. The regions of its brain signature are nodes implicated in the effort-mode network and subcortical areas with mainly Glutamate/GABA-aminobutyric-acid-ergic (Glu/GABA-ergic) mediation/modulation. Glu, GABA and other metabolites (Lactate, Aspartate, Glucose, etc.) play an important role in mediating the activity of the brain during both stimulus-induced and "intrinsic activity" (34).

Preclinical studies have found that chronic stress tends to increase dendrite length and complexity of Glu neurons in the basolateral nucleus (BLA) of the amygdala. BLA is implicated in the regulation of both positive and negative emotional valence processing and is associated with emotional disturbances such as anxiety and depressed mood. There is also a suggestion that persistent stress leads to hyperdopaminergic activity in the mesolimbic system which presents as social decline and suicidal behavior. All of this presents the dynamic, region- and circuit-specific

stress effects that could be significant for the disturbed connectivity recorded in depressed patients (35). In studies with ketamine administration to healthy controls GABA inhibition is observed, reporting that ketamine decreases DMN connectivity and reduces reactivity of amygdala-hippocampal circuitry in response to emotional stimuli (36). These results have measurable neuronal correlates, with fMRI experiments that reliably show anomalies within the corticolimbic network, including the prefrontal cortex and anterior cingulate cortex (ACC), insula, amygdala, hippocampus and striatum (37).

Amygdala hyper-responsiveness has been shown to inhibit GABAergic inter-neuron function in the hippocampus by direct projections, leading to the disinhibition of pyramidal cells and, ultimately, to increased hippocampal activity (38). In exchange, increased transmission from the hippocampus to the striatum was found to facilitate the dysregulation of striatal dopamine which is typical in schizophrenia (39). In several studies it is demonstrated that hyper-responsiveness of the amygdala and related emotional regions of the brain is observed in people with schizophrenia (40) and individuals at ultra-high risk (UHR) for psychosis (41), as well as in healthy people with subclinical psychotic experiences. Other studies found increased Glu concentrations across several corticolimbic areas in schizophrenic individuals (42).

Effort-mode network/extrinsic mode network (EMN) is complementary to the DMN in such a way that the EMN is down-regulated during task absence times, while the DMN is up-regulated (43). The EMN has basically a fronto-temporo-parietal spatial distribution, including the inferior and middle frontal gyri, the inferior parietal lobule, the supplementary motor area, the inferior temporal gyrus. Network up- and down-regulation dynamics dysfunction has been proposed to have neuronal implications for cognitive disability found in many psychiatric disorders such as schizophrenia (43). Since the DMN has been defined as a mode of intrinsic neuronal activity (44), the EMN is a central network for extrinsic neuronal activity (43).

The DMN exhibits activations in the medial and posterior regions, while EMN shows activations in the lateral and anterior regions, but also in the frontal and parietal areas (45–47). It is hypothesized that aberrant DMN activation could be a characteristic feature for hallucinatory experiences (48). Auditory hallucinations can be linked to abnormally elevated resting state activity in the auditory cortex itself, irregular modulation of the auditory cortex by anterior cortical midline structures as part of the DMN, and neural miscommunication between auditory cortical resting state shifts and stimulus triggered activity (49). Cognitive dysfunction and hypo-activation observed in patients with schizophrenia, for example, when introduced to complicated cognitive tasks may be due to inadequate interactive regulation of the DMN and EMN networks, rather than a deficit with respect to a particular brain region (43).

The third component identified in our study (PC3) had opposite loads of the structural and functional (both rest and task-related) modalities and was reflected in a brain signature that involved regions localized in the left and right opercular part of the IFG, right supramarginal gyrus, left superior temporal gyrus, left anterior orbital gyrus, supplementary motor cortex, and several occipital regions. Diffusion MRI and probabilistic tractography have recently been used to demonstrate that there is greater tempo-parietal-insula connectivity in the right as opposed to the left hemisphere (50). Another tractography research recorded that subcomponent III of the Superior Longitudinal Fasciculus, an association fiber pathway that potentially interconnects the frontal with the parietal regions of the Ventral Attention Network, is greater in the right compared to the left hemisphere (51). These results provide an anatomical framework for the right-lateralized ventral attention network involved in the salience detection. However, the implications for the functional brain network remain unclear.

In summary resting state residual activations are detected mostly in the frontal segments of the DMN, which are predominantly dopaminergic (32), task related activations yield mainly Glutamate/GABAergic subcortical network of hippocampus and amygdala, which is consistent with other studies in the field (52), and structural alterations affect the temporoparietal network (53).

5. Conclusions

The present study was able to demonstrate that by means of MLM applied to multimodal data sets including structural, task-related and resting state functional MRI of patients with schizophrenia and depression meaningful brain signatures with high discriminative value can be identified. The first signature reflected equal loadings of the three imaging modalities which means that the regions included (PP, IFG, Insula, NAcc etc.) have both structural and functional characteristics that can discriminate between the two groups. The second signature encompassed regions that have high discriminative power in the functional modalities i.e., task-related vs resting state fMRI and those regions are part of the EMN and DMN, respectively. The third brain signature reflected opposite loadings of the structural and functional imaging modalities and it is comprised mainly of temporo-occipital and motor regions.

The limitations of our research are related to the heterogeneity of the study population and the novel design of our paradigm, which contributed to difficulties in attempting to compare the results with correlated research. Such shortcomings may be overcome by expanding translational neuroimaging studies through separate centers using a similar approach to detecting the functional MRI substrate corresponding to the clinical self-assessment instruments in replicative protocols.

Author Contributions: “Conceptualization, D.S; methodology, FK and DS.; software, FK and AL.; validation, SK; formal analysis, FK, SK and RP; investigation, KA and DS.; resources, DS and KA; data curation, FK; writing—original draft preparation, KA, SK and DS; writing—review and editing, AT, visualization, FK and AL.; supervision, DS project administration, DS; funding acquisition, DS. All authors have read and agreed to the published version of the manuscript.”

Funding: This research received no external funding

Conflicts of Interest: The authors declare no conflict of interest

References

1. Specht K. Current Challenges in Translational and Clinical fMRI and Future Directions. *Front Psychiatry* [Internet]. 2020 [cited 2020 Nov 30];10. Available from: <https://www.frontiersin.org/articles/10.3389/fpsy.2019.00924/full>
2. Yang H, Liu J, Sui J, Pearlson G, Calhoun VD. A Hybrid Machine Learning Method for Fusing fMRI and Genetic Data: Combining both Improves Classification of Schizophrenia. *Front Hum Neurosci* [Internet]. 2010 [cited 2020 Nov 30];4. Available from: <https://www.frontiersin.org/articles/10.3389/fnhum.2010.00192/full>
3. Hahn T, Marquand AF, Ehlis A-C, Dresler T, Kittel-Schneider S, Jarczok TA, et al. Integrating Neurobiological Markers of Depression. *Arch Gen Psychiatry*. 2010 Dec 6;68(4):361.
4. Castro E, Martínez-Ramón M, Pearlson G, Sui J, Calhoun VD. Characterization of groups using composite kernels and multi-source fMRI analysis data: application to schizophrenia. *Neuroimage*. 2011 Sep 15;58(2):526–36.
5. Sundermann B, Herr D, Schwindt W, Pfeleiderer B. Multivariate Classification of Blood Oxygen Level–Dependent fMRI Data with Diagnostic Intention: A Clinical Perspective. *American Journal of Neuroradiology* [Internet]. 2013 Sep 12 [cited 2020 Nov 30]; Available from: <http://www.ajnr.org/content/early/2013/09/12/ajnr.A3713>

6. Sui J, He H, Yu Q, Chen J, Rogers J, Pearlson G, et al. Combination of Resting State fMRI, DTI, and sMRI Data to Discriminate Schizophrenia by N-way MCCA + jICA. *Front Hum Neurosci* [Internet]. 2013 [cited 2020 Nov 27];7. Available from: <https://www.frontiersin.org/articles/10.3389/fnhum.2013.00235/full>
7. Kalcher K, Boubela RN, Huf W, Biswal BB, Baldinger P, Sailer U, et al. RESCALE: Voxel-specific task-fMRI scaling using resting state fluctuation amplitude. *NeuroImage*. 2013 Apr 15;70:80–8.
8. Gao S, Calhoun VD, Sui J. Machine learning in major depression: From classification to treatment outcome prediction. *CNS Neuroscience & Therapeutics*. 2018;24(11):1037–52.
9. Stoyanov DS. An Essay on the Mind-Brain Problem and Legal Proof. *Balkan Journal of Philosophy*. 2018;X(1):27–36.
10. Stoyanov D, Kandilarova S, Borgwardt S, Stieglitz R-D, Hugdahl K, Kostianev S. Psychopathology Assessment Methods Revisited: On Translational Cross-Validation of Clinical Self-Evaluation Scale and fMRI. *Front Psychiatry* [Internet]. 2018 [cited 2020 Nov 3];9. Available from: <https://www.frontiersin.org/articles/10.3389/fpsy.2018.00021/full>
11. Stoyanov D, Kandilarova S, Arabadzhiev Z, Paunova R, Schmidt A, Borgwardt S. Cross-Validation of Paranoid-Depressive Scale and Functional MRI: New Paradigm for Neuroscience Informed Clinical Psychopathology. *Front Psychiatry* [Internet]. 2019 [cited 2020 Nov 3];10. Available from: <https://www.frontiersin.org/articles/10.3389/fpsy.2019.00711/full>
12. Stoyanov D, Kandilarova S, Paunova R, Barranco Garcia J, Latypova A, Kherif F. Cross-Validation of Functional MRI and Paranoid-Depressive Scale: Results From Multivariate Analysis. *Front Psychiatry* [Internet]. 2019 [cited 2020 Nov 3];10. Available from: <https://www.frontiersin.org/articles/10.3389/fpsy.2019.00869/full>
13. Worsley KJ, Poline J-B, Friston KJ, Evans AC. Characterizing the Response of PET and fMRI Data Using Multivariate Linear Models. *NeuroImage*. 1997 Nov 1;6(4):305–19.
14. Kawasaki Y, Suzuki M, Kherif F, Takahashi T, Zhou S-Y, Nakamura K, et al. Multivariate voxel-based morphometry successfully differentiates schizophrenia patients from healthy controls. *NeuroImage*. 2007 Jan 1;34(1):235–42.
15. Kherif F, Poline J-B, Flandin G, Benali H, Simon O, Dehaene S, et al. Multivariate Model Specification for fMRI Data. *NeuroImage*. 2002 Aug 1;16(4):1068–83.
16. Sheehan DV, Lecrubier Y, Sheehan KH, Amorim P, Janavs J, Weiller E, et al. The Mini-International Neuropsychiatric Interview (M.I.N.I.): the development and

- validation of a structured diagnostic psychiatric interview for DSM-IV and ICD-10. *J Clin Psychiatry*. 1998;59 Suppl 20:22-33;quiz 34-57.
17. Montgomery SA, Asberg M. A new depression scale designed to be sensitive to change. *British Journal of Psychiatry*. 1979;134(4):382–389.
 18. Kay SR, Fiszbein A, Opler LA. The positive and negative syndrome scale (PANSS) for schizophrenia. *Schizophrenia Bulletin*. 1987;13(2):261–276.
 19. Radua J, Phillips ML, Russell T, Lawrence N, Marshall N, Kalidindi S, et al. Neural response to specific components of fearful faces in healthy and schizophrenic adults. *Neuroimage*. 2010 Jan 1;49(1):939–46.
 20. Adolphs R. Is the human amygdala specialized for processing social information? *Ann N Y Acad Sci*. 2003 Apr;985:326–40.
 21. Kasai K, Shenton ME, Salisbury DF, Hirayasu Y, Lee C-U, Ciszewski AA, et al. Progressive decrease of left superior temporal gyrus gray matter volume in patients with first-episode schizophrenia. *Am J Psychiatry*. 2003 Jan;160(1):156–64.
 22. Rajarethinam RP, DeQuardo JR, Nalepa R, Tandon R. Superior temporal gyrus in schizophrenia: a volumetric magnetic resonance imaging study. *Schizophr Res*. 2000 Jan 21;41(2):303–12.
 23. Kühn S, Gallinat J. Quantitative Meta-Analysis on State and Trait Aspects of Auditory Verbal Hallucinations in Schizophrenia. *Schizophr Bull*. 2012 Jun 18;38(4):779–86.
 24. Modinos G, Costafreda SG, van Tol M-J, McGuire PK, Aleman A, Allen P. Neuroanatomy of auditory verbal hallucinations in schizophrenia: A quantitative meta-analysis of voxel-based morphometry studies. *Cortex*. 2013 Apr 1;49(4):1046–55.
 25. Allen P, Larøi F, McGuire PK, Aleman A. The hallucinating brain: A review of structural and functional neuroimaging studies of hallucinations. *Neuroscience & Biobehavioral Reviews*. 2008 Jan 1;32(1):175–91.
 26. Schremm A, Novén M, Horne M, Söderström P, van Westen D, Roll M. Cortical thickness of planum temporale and pars opercularis in native language tone processing. *Brain and Language*. 2018 Jan 1;176:42–7.
 27. Tops M, Boksem MAS. A Potential Role of the Inferior Frontal Gyrus and Anterior Insula in Cognitive Control, Brain Rhythms, and Event-Related Potentials. *Front Psychol* [Internet]. 2011 [cited 2020 Nov 29];2. Available from: <https://www.frontiersin.org/articles/10.3389/fpsyg.2011.00330/full>
 28. Tops M, Boksem MAS. Cortisol involvement in mechanisms of behavioral inhibition. *Psychophysiology*. 2011;48(5):723–32.

29. Wu JC, Gillin JC, Buchsbaum MS, Schachar C, Darnall LA, Keator DB, et al. Sleep deprivation PET correlations of Hamilton symptom improvement ratings with changes in relative glucose metabolism in patients with depression. *Journal of Affective Disorders*. 2008 Apr 1;107(1):181–6.
30. Britt JP, Benaliouad F, McDevitt RA, Stuber GD, Wise RA, Bonci A. Synaptic and Behavioral Profile of Multiple Glutamatergic Inputs to the Nucleus Accumbens. *Neuron*. 2012 Nov 21;76(4):790–803.
31. Rowley HL, Kulkarni RS, Gosden J, Brammer RJ, Hackett D, Heal DJ. Differences in the neurochemical and behavioural profiles of lisdexamfetamine methylphenidate and modafinil revealed by simultaneous dual-probe microdialysis and locomotor activity measurements in freely-moving rats: *Journal of Psychopharmacology* [Internet]. 2013 Dec 10 [cited 2020 Nov 27]; Available from: https://journals.sagepub.com/doi/10.1177/0269881113513850?url_ver=Z39.88-2003&rfr_id=ori%3Arid%3Acrossref.org&rfr_dat=cr_pub++0pubmed
32. Schranter A, Ferguson B, Stoffers D, Booij J, Rombouts S, Reneman L. Effects of dexamphetamine-induced dopamine release on resting-state network connectivity in recreational amphetamine users and healthy controls. *Brain Imaging and Behavior*. 2016 Jun 1;10(2):548–58.
33. Dang LC, O'Neil JP, Jagust WJ. Dopamine Supports Coupling of Attention-Related Networks. *Journal of Neuroscience*. 2012 Jul 11;32(28):9582–7.
34. Duncan NW, Wiebking C, Northoff G. Associations of regional GABA and glutamate with intrinsic and extrinsic neural activity in humans—A review of multimodal imaging studies. *Neuroscience & Biobehavioral Reviews*. 2014 Nov 1;47:36–52.
35. Duman RS, Sanacora G, Krystal JH. Altered Connectivity in Depression: GABA and Glutamate Neurotransmitter Deficits and Reversal by Novel Treatments. *Neuron*. 2019 Apr 3;102(1):75–90.
36. Evans JW, Szczepanik J, Brutsche N, Park LT, Nugent AC, Zarate CA. Default Mode Connectivity in Major Depressive Disorder Measured Up to 10 Days After Ketamine Administration. *Biological Psychiatry*. 2018 Oct 15;84(8):582–90.
37. Phillips LK, Seidman LJ. Emotion Processing in Persons at Risk for Schizophrenia. *Schizophr Bull*. 2008 Sep 1;34(5):888–903.
38. Zimmerman EC, Bellaire M, Ewing SG, Grace AA. Abnormal Stress Responsivity in a Rodent Developmental Disruption Model of Schizophrenia. *Neuropsychopharmacology*. 2013 Oct;38(11):2131–9.

39. Lodge DJ, Grace AA. Hippocampal dysregulation of dopamine system function and the pathophysiology of schizophrenia. *Trends in Pharmacological Sciences*. 2011 Sep 1;32(9):507–13.
40. Donaldson7.pdf [Internet]. [cited 2020 Nov 27]. Available from: <https://dspace.stir.ac.uk/bitstream/1893/2389/1/Donaldson7.pdf>
41. Modinos G, Tseng H-H, Falkenberg I, Samson C, McGuire P, Allen P. Neural correlates of aberrant emotional salience predict psychotic symptoms and global functioning in high-risk and first-episode psychosis. *Soc Cogn Affect Neurosci*. 2015 Oct 1;10(10):1429–36.
42. Marsman A, van den Heuvel MP, Klomp DWJ, Kahn RS, Luijten PR, Hulshoff Pol HE. Glutamate in Schizophrenia: A Focused Review and Meta-Analysis of 1H-MRS Studies. *Schizophr Bull*. 2013 Jan 1;39(1):120–9.
43. Hugdahl K, Raichle ME, Mitra A, Specht K. On the existence of a generalized non-specific task-dependent network. *Front Hum Neurosci* [Internet]. 2015 [cited 2020 Nov 29];9. Available from: <https://www.frontiersin.org/articles/10.3389/fnhum.2015.00430/full>
44. Raichle ME. The restless brain: how intrinsic activity organizes brain function. *Philosophical Transactions of the Royal Society B: Biological Sciences*. 2015 May 19;370(1668):20140172.
45. Eichele T, Debener S, Calhoun VD, Specht K, Engel AK, Hugdahl K, et al. Prediction of human errors by maladaptive changes in event-related brain networks. *PNAS*. 2008 Apr 22;105(16):6173–8.
46. Løberg E-M, Nygård M, Helle S, Berle JØ, Johnsen E, Kroken R, et al. An fMRI Study of Neuronal Activation in Schizophrenia Patients with and without Previous Cannabis Use. *Front Psychiatry* [Internet]. 2012 [cited 2020 Nov 29];3. Available from: <https://www.frontiersin.org/articles/10.3389/fpsyt.2012.00094/full>
47. Nygård M, Eichele T, Løberg E-M, Jørgensen HA, Johnsen E, Kroken RA, et al. Patients with Schizophrenia Fail to Up-Regulate Task-Positive and Down-Regulate Task-Negative Brain Networks: An fMRI Study Using an ICA Analysis Approach. *Front Hum Neurosci* [Internet]. 2012 [cited 2020 Nov 29];6. Available from: <https://www.frontiersin.org/articles/10.3389/fnhum.2012.00149/full>
48. Lutterveld R van, Diederens KJM, Otte WM, Sommer IE. Network analysis of auditory hallucinations in nonpsychotic individuals. *Human Brain Mapping*. 2014;35(4):1436–45.
49. Hugdahl K, Løberg E-M, Nygård M. Left temporal lobe structural and functional abnormality underlying auditory hallucinations. *Front Neurosci* [Internet]. 2009 [cited

2020 Nov 29];3. Available from:
<https://www.frontiersin.org/articles/10.3389/neuro.01.001.2009/full>

50. Kucyi A, Moayed M, Weissman-Fogel I, Hodaie M, Davis KD. Hemispheric asymmetry in white matter connectivity of the temporoparietal junction with the insula and prefrontal cortex. *PLoS One*. 2012;7(4):e35589.
51. Thiebaut de Schotten M, Dell'Acqua F, Forkel SJ, Simmons A, Vergani F, Murphy DGM, et al. A lateralized brain network for visuospatial attention. *Nat Neurosci*. 2011 Sep 18;14(10):1245–6.
52. Lener MS, Niciu MJ, Ballard ED, Park M, Park LT, Nugent A, et al. Glutamate and GABA Systems in the Pathophysiology of Major Depression and Antidepressant Response to Ketamine. *Biol Psychiatry*. 2017 May 15;81(10):886–97.
53. Graziano MSA. The temporoparietal junction and awareness. *Neurosci Conscious* [Internet]. 2018 Jan 1 [cited 2020 Nov 27];2018(1). Available from: <https://academic.oup.com/nc/article/2018/1/niy005/4955859>