

**Supplementary Materials:**

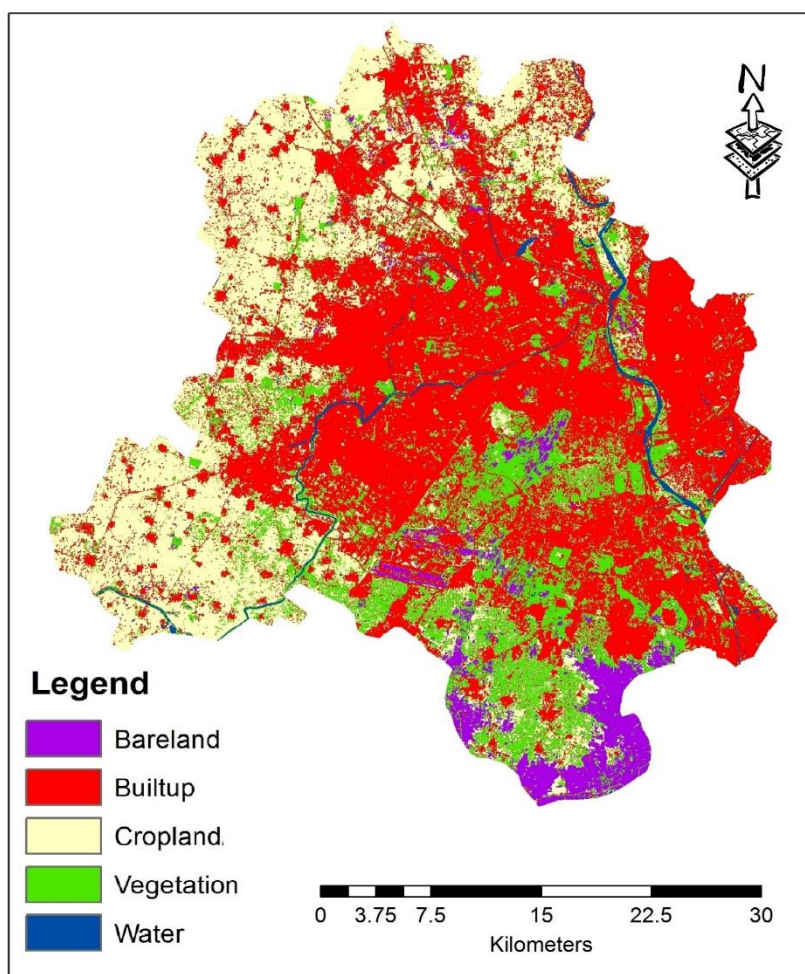


Fig.– S1: LULC classification map of Delhi.

Table. – S2: Accuracy assessment table of LULC.

Class Name	Reference Total	Classified Totals	Number Correct	Producers Accuracy	Users Accuracy
Built-up	119	126	114	95.80%	90.48%
Vegetation	44	36	29	65.91%	80.56%
Water	3	3	3	100.00%	100.00%
Bare land	24	15	13	54.17%	86.67%
Cropland	110	120	104	94.55%	86.67%
Totals	300	300	263		
Overall Classification Accuracy =				87.67%	

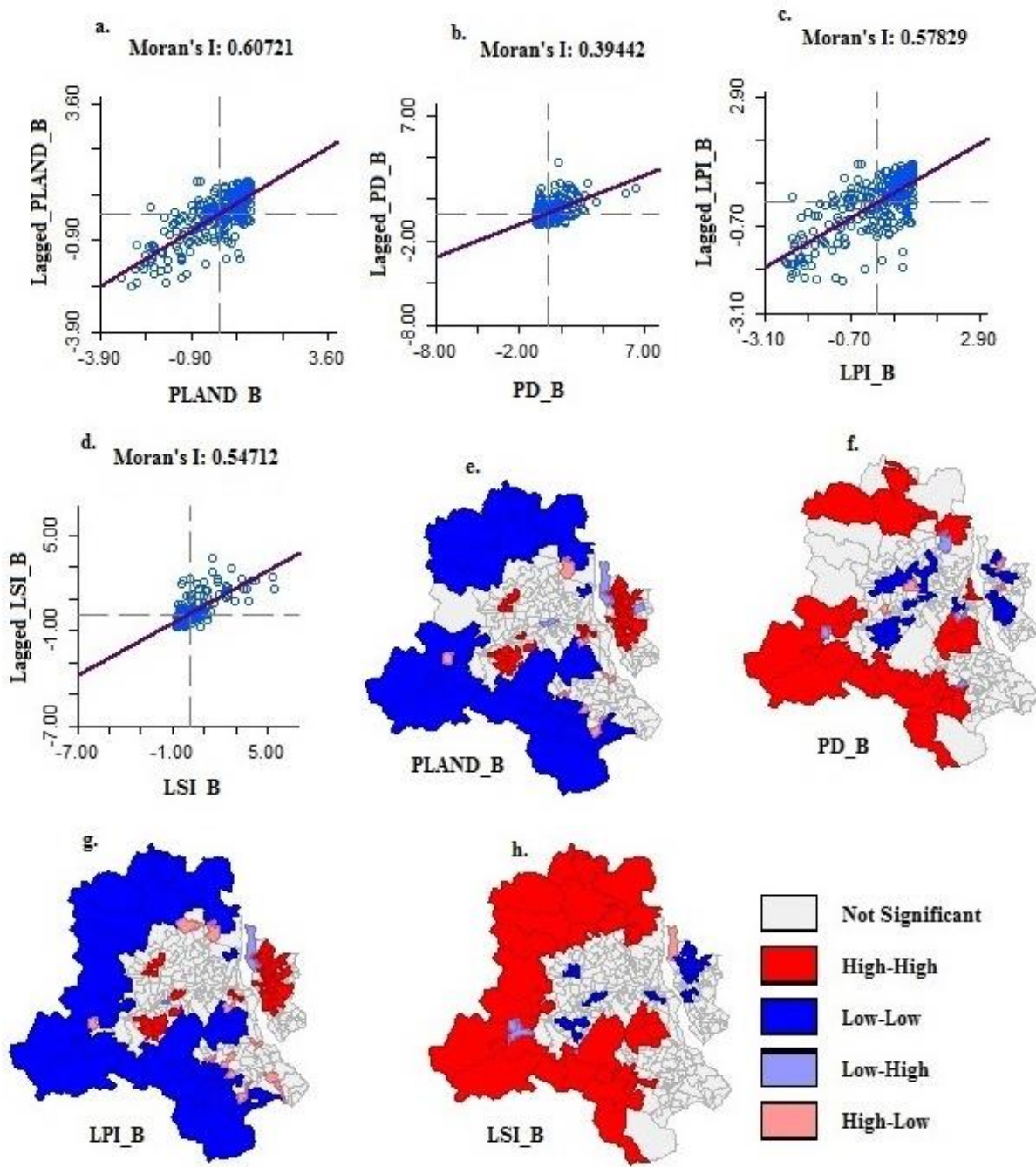


Fig. – S3: Univariate Moran's I ULM of built-up with its own lagged variable (weight as 1<sup>st</sup> order Queen Contiguity)

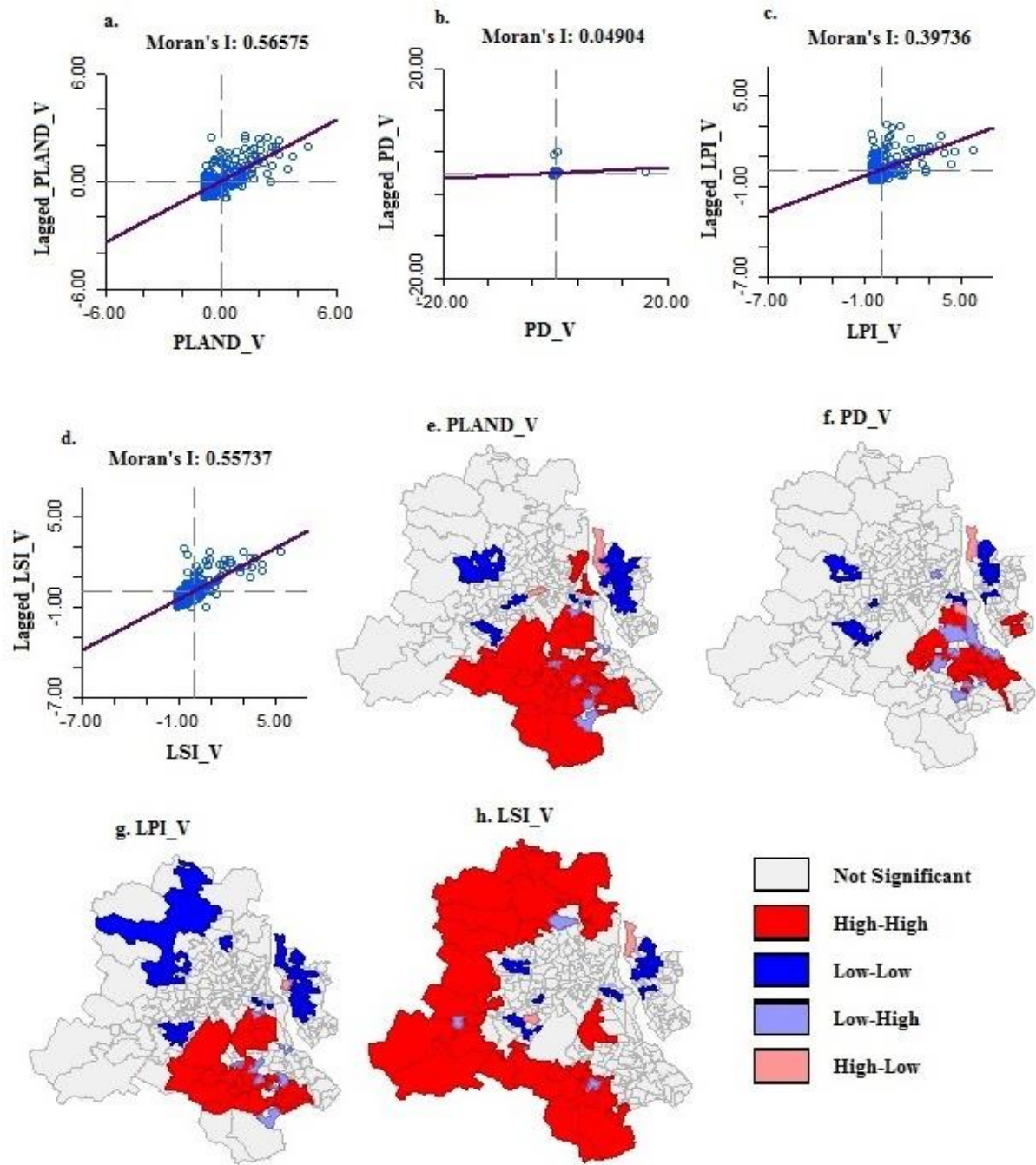
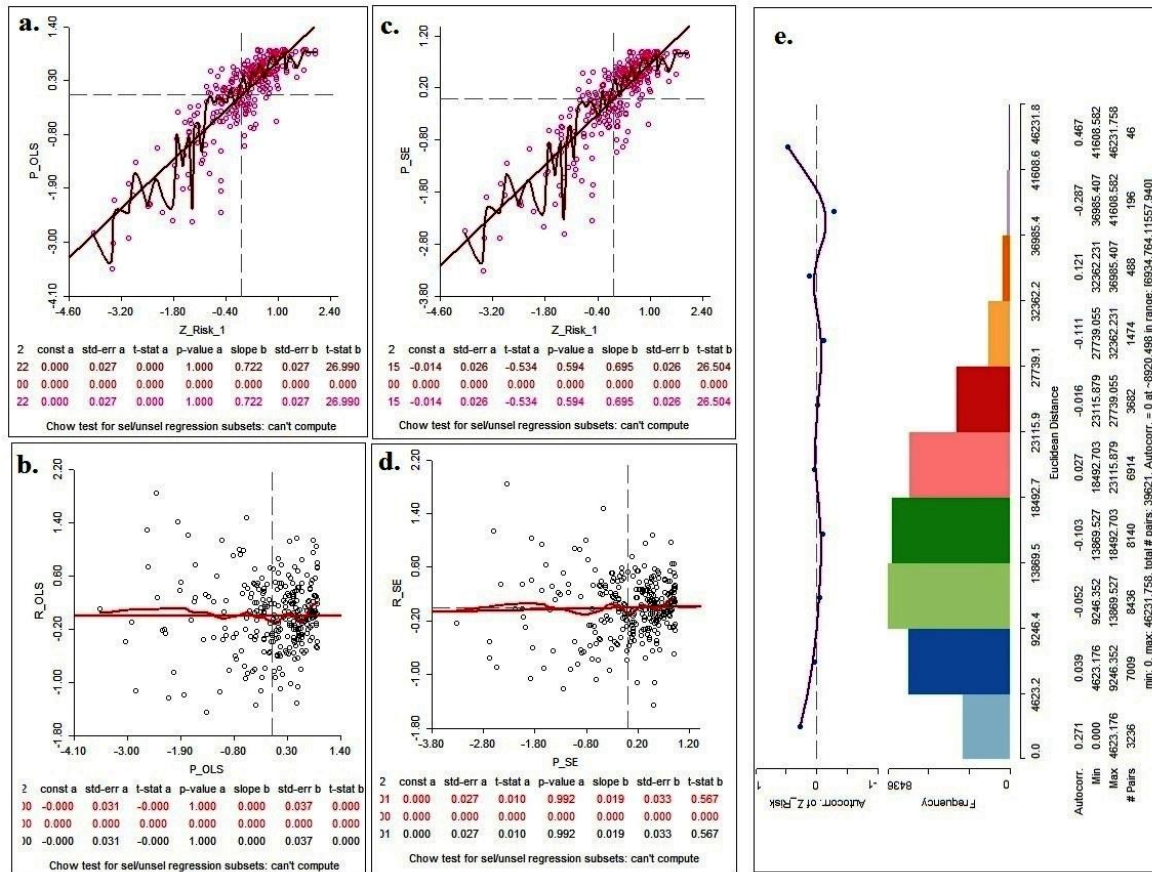


Fig. – S4: Univariate Moran's I ULM of green space with its own lagged variable (weight as 1<sup>st</sup> order Queen Contiguity)

Table – S5: Multicollinearity statistics for dependents variable (i.e., BULM of built-up and green

Model		Unstandardized Coefficients		Standardized Coefficients		Sig.	Collinearity Statistics	
		B	Std. Error	Beta			Tolerance	VIF
Initial Model Input	(Constant)	0.00	0.03		0.00	1.00		
	Z_PLAND_B	0.58	0.15	0.58	3.79	0.00	0.04	23.20
	Z_PD_B	-0.08	0.06	-0.08	-1.44	0.15	0.30	3.37
	Z_LPI_B	0.03	0.16	0.03	0.18	0.86	0.04	24.81
	Z_LSI_B	-0.17	0.12	-0.17	-1.37	0.17	0.07	14.53
	Z_AREA_Mn_B	-0.01	0.04	-0.01	-0.27	0.79	0.57	1.76
	Z_PLAND_V	-0.07	0.12	-0.07	-0.61	0.54	0.07	14.19
	Z_PD_V	-0.12	0.04	-0.12	-3.01	0.00	0.59	1.69
	Z_LPI_V	0.35	0.13	0.35	2.70	0.01	0.06	16.39
	Z_LSI_V	-0.13	0.14	-0.13	-0.95	0.34	0.06	18.11
	Z_AREA_Mn_V	-0.08	0.09	-0.08	-0.87	0.39	0.14	7.36
After removing 'Z_B_LPI, Z_B_AreaMn, Z_V_PLAND, Z_V_AreaMn	(Constant)	0.00	0.03		0.00	1.00		
	Z_PLAND_B	0.60	0.08	0.60	7.62	0.00	0.16	6.22
	Z_PD_B	-0.10	0.05	-0.10	-1.94	0.05	0.39	2.58
	Z_PD_V	-0.11	0.03	-0.11	-3.21	0.00	0.88	1.13
	Z_LPI_V	0.22	0.05	0.22	3.96	0.00	0.34	2.97
	Z_LSI_V	-0.30	0.06	-0.30	-4.79	0.00	0.25	4.01

space) when the regressed variable is HRHR.



**Figure. -S6: Regression output validation. a) actual vs predicted risk in OLS model; b) predicted risk vs residual in OLS model; c) actual vs predicted risk in SE model; d) predicted risk vs residual in SE model; and e) correlograms of normalized risk score showing spatial correlation.**