

Article

An investigation on the use by academic researchers of knowledge from scientific social networking sites

Vincenzo Corvello^{1,*}, Maria Cristina Chimenti¹, Carlo Giglio¹ and Saverino Verteramo¹

¹ Department of Mechanical, Energy and Management Engineering, University of Calabria; vincenzo.corvello@unical.it; mariacristina.chimenti@gmail.com; saverino.verteramo@unical.it;

² Department of Civil, Energy, Environmental and Material Engineering, Mediterranean University of Reggio Calabria; carlo.giglio@unirc.it

* Correspondence: vincenzo.corvello@unical.it.

Abstract: Scientific social networking sites like Researchgate or Academia.edu have become part of the work practice of academic researchers. These digital platforms have been designed precisely to encourage the exchange of knowledge between scholars and to help the expansion of collaborative networks among them. Even if studies on this topic have multiplied in recent years, there is a dearth of research on the actual impact of these platforms on scientific production. The goal of this study is to investigate the relation between the attitude of researchers towards scientific social networks and the use of knowledge in their scientific work. Data from users of the scientific social networking site Researchgate were collected. A total of 143 valid responses were received and structural equation modeling was applied for data analysis. Findings of this study confirmed that researchers use knowledge obtained from scientific social networking sites both incorporating it within their research products and to acquire new competences. In particular approaching the platform as a scientific community with a shared language and a shared vision was found to have a positive impact on knowledge use. To the best knowledge of the authors this is the first study investigating the actual use of knowledge from scientific social networking sites by academic researchers. Results help to understand the impact of these platforms on the work practice of a strategic sector like scientific research.

Keywords: Scientific social network; knowledge network; academic research; knowledge transfer; collaboration

1. Introduction

Scientific research plays a key role in economic and social growth. Economic progress largely depends on innovation, the vast majority of which requires some degree of scientific research [1]. Scientific research projects generally involve knowledge-intensive teams that necessitate participants to share knowledge while working together. Knowledge sharing among researchers is supported by higher institutions because it promotes critical thinking [2] and learning [3]. Traditionally, researchers find new opportunities to collaborate among colleagues in their institutions, through academic conferences, exchanging academic visits [4]. As a result of the diffusion of information and communication digital technologies, academic collaboration is undergoing an impressive transformation from physical to web interaction [5]. ICT facilitates learning, and provides faster and more efficient channels for knowledge sharing [6].

With the growth of Web 2.0, social networking websites emerged and soon turned out to be the web users' favorite places to generate and share information, and to communicate with each other [7, 8]. Social networking influence is increasingly pervasive and spreads in contexts that were initially unthinkable as a support tool for educational activities [9].

In this context it is important to study which factors influence the user willingness toward knowledge sharing in social networks. Zhao et al. [10] underline the role of perceived value (depending on social value, entertainment value, emotion value, and information value) and trust.

For this reason, researchers engage with social networking platforms for collaboration and knowledge sharing [11; 6]. Scientific Social Network Sites (SSNS) are web platforms specifically created for researchers and aimed at the communication, dissemination, and exchange of science-related information between the interested members [12]. These platforms allow academics to follow how the documents they share are used by the online community, obtaining rapid feedback on the impact of their results in the web environment [8]. Several SSNS are available for researchers, including Academia.edu, Mendeley and ResearchGate. ResearchGate has more than 15 million members [13], while over 114 million academics have signed up to Academia.edu [14]. Mendeley, as a primary reference manager which included social networking features, also exceeds 6 million users [15].

Literature on SSNS has grown in recent years. Research has focused on a wide range of topics like the demographics of SSNS [16; 17; 18], intention to adopt SSNS [17; 19], motivations for using SSNS [20; 21], impact on social capital [6]. Academic social networks have been found useful in expanding a researcher's network [17] as well as enhancing a researcher's knowledge sharing behavior [6].

In spite of the fact that in the last few years research contributions regarding SSNS have increased, their impact on researchers' output has not been investigated [22]. Collaboration is essential for scientific quality and productivity, because it guarantees access to novel and reliable knowledge [23; 24]. The characteristics of an individual and the work environment are endogenously related to both collaboration and scientific productivity [23; 25; 26]. SSNS can quickly connect and support researchers [6]. Therefore, it is expected that members of SSNS experience improvements in their work and scientific results. It is necessary to investigate the relation between the use of SSNS and the output of researchers. It is important, in particular, to understand under what conditions SSNS have a positive impact on the acquisition of new knowledge, that is expected to lead to an improved scientific output. If we consider SSNS as a knowledge sharing platform, perceived usefulness and satisfaction degree have a significant influence on continued use intention [27].

The existing literature on productivity in scientific research underlines that scientific knowledge sharing in academia is influenced by a researcher's perception of the characteristics of the scientific community [28; 29] and of the possible personal advantages collaboration offers [30; 31]. Some researchers participate in SSNS and become members of the community, others adopt an utilitarian approach, accessing the website to find solution to specific problems [32; 33; 34].

This study investigates the circumstances under which the use of SSNS impacts on a researcher's output in terms of knowledge acquisition and use. In particular, use of knowledge from SSNS in a researcher's scientific output and scientific competence acquisition are the dependent variables. Based on the review of the literature the impact of personal beliefs on these two variables has been investigated. Four personal beliefs have been considered: shared vision, shared language, competence and reciprocity. The first two reflect a collaborative approach of the researcher with the community while the other two are associated with an utilitarian approach.

The results of this study are useful for SSNS providers in order to improve their platforms features as well as for researchers, in order to better understand knowledge acquisition and utilization processes in a SSNS context. Finally, the results may be relevant for academics and policymakers interested in the evaluation of scientific research and in the improvement of its results from both a quantitative and qualitative point of view.

2. Literature review

2.1. Scientific Social Networking Sites, knowledge sharing and knowledge use

In recent years, SSNSs use in academia is becoming more commonplace [35]. Several studies have focused on the motivations for using SSNSs [19].

Gaining visibility and reputation is one of the most frequently cited reason [36]. Researchers use SSNSs to gain personal reputation [37], visibility of their work and publications [38; 39] or, less often, of their institution [19; 35]. According to this vision, researchers use SSNSs in an active way (they do not prevalently use the system passively to consult documents) and with the purpose of obtaining an advantage for themselves or for their institution.

Another, equally widespread point of view, underlines the use of SSNSs as sources of scientific knowledge [21; 40; 41; 42]. Researchers passively consult documents uploaded by their colleagues [19] or actively seek the knowledge they need through the use of features like “question and answers” [40]. This attitude is often found in junior researchers or graduate students, but it is also common among more experienced users [43]. Scholars consider SSNSs as a means to retrieve knowledge they are not able to find in their proximal network of contacts [18].

Several studies concerned with knowledge sharing and acquisition on SSNSs, focus on specific features of the platforms, like question and answers [40], document sharing [39] or networking [44].

Two approaches can be identified in the analyzed literature on knowledge sharing on SSNSs both in studies considering the platforms as a whole and in those focusing on specific features. According to the first approach, researchers see SSNSs as readily available repositories or sources of knowledge. According to the second approach SSNSs are seen as scientific communities. While for most researchers one of the two attitudes towards SSNSs prevails, many other adopt both the points of view in approaching these platforms [18; 19; 35].

The first approach considers the SSNSs as a tool or a service: the researcher uses the platform to solve specific problems. For example, focusing on knowledge acquisition and sharing, Waheed and colleagues underline that knowledge perceived quality is a critical variable in determining a researcher’s satisfaction with the platform, perceived learning and loyalty [42]. Their study on the use of Researchgate is based on the assumption that researchers are interested in SSNSs as a source of knowledge and finds that satisfaction and continuance intention to use the platform are linked to the perception of the obtained knowledge being adequate to their needs. Williams [45] has found that accessing knowledge is the main reason for using Academia.edu. Deng and colleagues analyzed the characteristics of popular question and answers on Researchgate [40]. They found that researchers prefer short answers with positive action-oriented statements, revealing a pragmatic approach oriented at finding solutions to specific problems. Lee and colleagues conducted a survey among Researchgate users on the motivations for using the platform [46]. They found that accessibility of knowledge was the main reason for using the system.

The second approach considers SSNSs as communities. Researchers value membership in these communities. According to this point of view, researchers habitually access the website and interact with its users [47; 48; 49; 50; 51]. Nández and Borrego [38] suggest that getting in touch with other researchers, disseminating their research results and following other researchers’ activities is the main reason for participating in SSNS, without need for an immediate objective. Similarly, the study conducted by Corvello et al. [11] suggests that academics mostly use SSNS as a means to communicate and share their results and their knowledge. Yan and colleagues analyzed the use of the “follow” function in Researchgate, finding that, while some researchers “follow” other users in order to obtain specific pieces of information, over fifty percent of users become followers of colleagues without an immediate goal, but aware that a network on the SSNS can be a valuable source of knowledge in the medium-long term [50].

While the above cited studies address the topic of knowledge sharing and acquisition on SSNSs, there is a dearth of research on the actual impact of SSNSs on the scientific production of researchers [49]. Researchers use SSNSs to seek for scientific knowledge using the platforms as a repository or

interacting with the underlying community, but it is not clear when and how much they use the knowledge they obtain in their work.

2.2. Research model

To fill the research gap highlighted above, this study aims to investigate the relationship between the attitude of a researcher towards SSNSs on the one hand and the actual use of the knowledge obtained, on the other. In particular, as discussed in the previous section, the attitude of the researcher can be twofold: 1) he considers the SSNS as a repository to be used to find specific pieces of information and knowledge; 2) he considers SSNSs as communities in which to build new knowledge through more or less intense interaction practices. In the first case we define the attitude of the researcher “transactional attitude”. In the second case we use the expression “membership attitude”. As discussed above the two “attitudes” intertwine and the same researcher can identify with both views at the same time.

The research model shown in Figure 1 represents the hypothesized and investigated relationships in this research. The individual variables and assumptions are discussed in detail below in this paragraph.

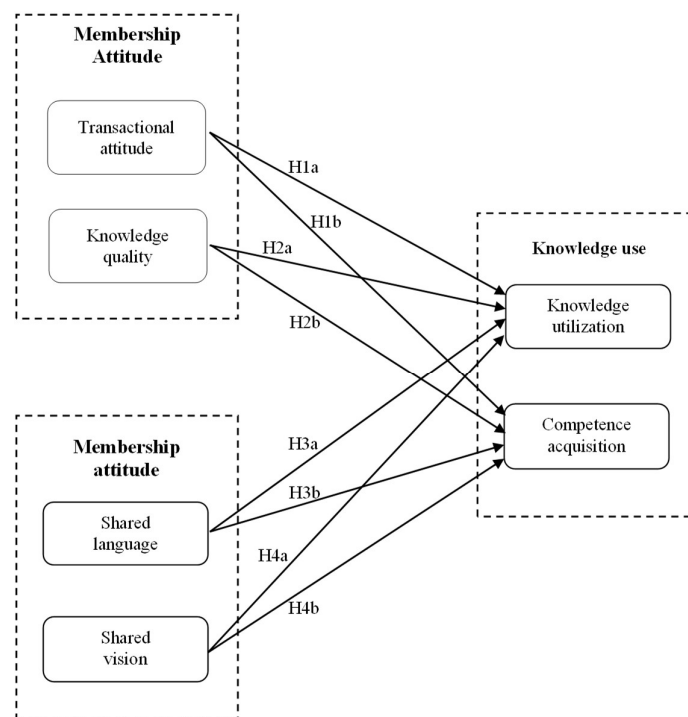


Figure 1. Research model.

Knowledge use. The goal of this paper is to get a better understanding of the conditions under which researchers actually benefit from participation in SSNS. While the topic has been neglected by the literature on SSNSs, it has been addressed by scholars in other, related fields like virtual communities [39; 52], online social question and answers communities [53], online review systems [54]. Knowledge retrieved online can be used to solve specific problems or as a basis to develop new competences [55]. When considering scientific research, the first situation coincides with the incorporation by a researcher of the knowledge obtained online in his scientific products. For this specific case we use the expression “knowledge utilization” [52]. The second situation consists in the acquisition of new competences in conducting scientific research [44; 51]. The attitude of researchers

towards SSNSs is expected to influence knowledge use, both considered as knowledge utilization and competence acquisition (see paragraph 2.1).

Transactional attitude. SSNSs provide researchers with powerful means to find solutions to specific difficulties met during their work [40; 42; 45]. As a repository a SSNS provide easy access to publications and other documents [46]. Through the questions and answers function they offer the possibility to ask for advice to solve specific problems [40].

Researchers will use SSNSs as far as they expect that their questions (explicit or implicit) will be answered. If researchers perceive that they frequently find solutions to their problems, they will systematically use knowledge obtained from SSNSs in their work and will perceive that SSNSs contributed to developing their scientific competences. We define “knowledge availability” the perception of the researcher that he can easily find on SSNSs a solution to difficulties met during his work. The following hypotheses can be formulated:

H1a. The level of knowledge availability on SSNSs has a positive impact on knowledge utilization.

H1b. The level of knowledge availability on SSNSs has a positive impact on competence acquisition.

As for other online resources, it is expected that the use of knowledge obtained from SSNSs, both considered as knowledge utilization and as competence acquisition, is influenced by the researcher’s perception of its quality level [52]. We define “knowledge quality” the perception of the researcher of the degree to which the source of knowledge on the SSNSs (i.e. the researcher who shared the document or answered a question) can be relied upon. The following hypotheses can be formulated:

H2a. The level of perceived quality of knowledge obtained on SSNSs has a positive impact on knowledge utilization.

H2b. The level of perceived quality of knowledge obtained on SSNSs has a positive impact on competence acquisition.

Membership attitude. SSNSs are designed to support continued interaction among their members. Functions like “follow” a member on Researchgate [50] or different forms of feedback and alerts, allow the formation of virtual links [44], increase visibility of researchers and institutions [56] and generate loyalty towards the community [42]. Researchers participate without an immediate, specific objective: they participate because they value membership in the community. Members of virtual communities share a common language (i.e. codes, vocabulary, references) which enhances a common understanding of the topics they discuss. In turn, a common understanding has been found to result in an increase in knowledge sharing [57]. Similarly, shared language is expected to increase knowledge use by SSNSs users. Thus:

H3a. Shared language has a positive impact on knowledge utilization.

H3b. Shared language has a positive impact on competence acquisition.

Members of a community often share values and goals. Shared vision is the extent to which individuals share goals, concerns, and purpose [58] and it has been found to facilitate knowledge sharing in virtual communities [59]. Thus, the following hypotheses can be formulated:

H4a. Shared vision has a positive impact on knowledge utilization.

H4b. Shared vision has a positive impact on competence acquisition.

3. Research Methodology

3.1. Questionnaire Design

This research study has been conducted by using a questionnaire composed of two sections: the first one includes items associated with the constructs in the theoretical model; the second one consists of items relates to data on socio-demographic aspects, academic career and scientific social networks. Before such sections, the questionnaire provides a description of SSNSs, study purpose and impacts.

The process followed to define the measurement items includes a review of literature followed by an elicitation study [60] and an item validation process, since there is no standard questionnaire for the proposed model. This way, scholars may exploit a questionnaire geared to the analysis of a specific behavior and population of interest.

The elicitation phase was conducted by engaging twenty people in a focus group, representative of the study population in terms of ages, academic roles, and others variables in Table 1. Such a formative research process was realized by phone. Interviewees were asked to respond a set of questions aimed at making explicit new measurement items for belief constructs.

The output of this elicitation process was reviewed by other sixteen people, proving to be reliable and clear. The final questionnaire utilizes a 5-point Likert-type scale (1=*strongly disagree/bad*, 5=*strongly agree/good*) [61].

This work readapted existing validated items in the extant literature to assess the predictor constructs utilized in our model [40; 42; 44; 45; 46; 50; 52; 56; 57]. Constructs were measured by means of multi-item scales [62; 63], while the “response set” was handled by reverse-scaling three measurement items and deleting incoherently completed questionnaires.

3.2. Data Collection

The formative research process was realized in November 2019 by involving a quota sample of twenty academicians. The data were collected during the period from November 2019 to January 2020 through a paper-based questionnaire administered to academicians at the University of Calabria (Italy). Since both the questionnaire design and data collection phases, a mixed approach of procedural and statistical measures has been implemented in order to avoid the common method bias (CMB) [64]. As for procedures, all measures have been clearly separated according to spatial, temporal and psychological criteria, whilst the overall design process took into account also the structure and features of the survey as well as the study context [64]. Finally, statistical analyses - i.e. Harman’s single-factor test - have been utilized [64].

As a result, 143 valid responses were obtained out of 159 complete responses (valid response rate of 89,94%). 59.26% of valid responses are male and 40.74% are female. The respondents’ age groups and academic positions are shown in Table 1.

About 66.67% of the respondents are professors (at either the assistant, associate or full level), while 33.32% are research fellows, adjunct professors, doctoral students et similia. About 75.31% work in medical-scientific areas, 11.11% in the socio-economic one, and 2.47% in the human sciences (11.11% did not specify). 19.75% of respondents are 25-34 years old, 32.10% are 35-44%, 39.51% - the relative majority - are 45-55, and 8.64% are 55+.

Table 1. Characteristics of the sample.

Sample (N = 143) (%)		
Gender	Male	55.49%
	Female	44.51%
Age	25-34	19.75%
	35-44	32.10%
	45-55	39.51%
	55+	8.64%
	Academic level	Full professor
	Associate professor	23.46%
	Assistant professor	37.04%
	Adjunct professor	2.47%
	Research fellow	1.23%
	Post-doc	14.81%
	Ph.D. student	4.94%
	Technician	1.23%

Sample (N = 143) (%)	
Blank	8.64%

3.2. Data Analysis

The first methodological step consisted in the exploratory factor analysis (EFA) with Promax/oblique rotation, Bartlett's and Kaiser-Meyer-Olkin's (KMO) tests - through which the proper design of survey items per each factor was verified.

In the second step, the SEM analysis was applied by including both the confirmatory factor analysis (CFA) and path analysis (PA). The latter is utilized to test complicated models with a number of endogenous/concatenate variables [65], whilst CFA analyzes grouped items against constructs in order to assess whether collected data fit the model. SEM tests multiple relationships between latent constructs at the same time, together with mediating/moderating effects [66] [67] [68].

4. Results

4.1. Data screening and the Measurement Model

First, data were checked in order to verify the general linear assumption. Then, EFA was performed by using Maximum Likelihood (ML), Horn's procedure and Promax rotation [69; 70; 71]. Construct unidimensionality, correlations significance, and suitability for factor analysis were verified. The reliability of constructs was tested through Cronbach's alpha and item-to-total correlation [72], while CFA was used to test also construct validity [73] and the model hypotheses were checked by means of PA and SEM with robust ML/Satorra-Bentler scaled chi-squared, since the multivariate normality assumption was rejected [74; 75].

4.1.1. Reliability Analysis and Exploratory Factor Analysis (EFA)

The internal reliability of items was verified through Cronbach's alpha values, Alpha-if-Item-Deleted (AID) and Item-to-Total Correlation (ITC) showed in Table 2 [63]. Alpha values are far above 0.7, proving strong reliability of data [76]. The scale was not modified after the reliability check, indeed.

Bartlett's sphericity test (2,071.471, sign.=0.000, df=153) proves that variables correlation is significant, whilst KMO (0.875) ensures the feasibility of factor analysis [77].

Harman's single-factor test suggests that the total variance explained is 43.663%: CMB has been avoided.

During the EFA, the Horn's extraction method was run by choosing 6 extracted factors [78; 79; 80], since other extraction procedures (e.g. Principal Component Analysis [PCA]) proved to cause a higher information loss. Both convergent and discriminant validity are satisfied each factor has a biunivocal association with high-load items.

Oblique rotation further suggested that measured variables for each construct have no high loadings on other latent variables: items were grouped with corresponding loadings close to the 0.5 threshold. Also, running different rotations did not improve the results. Moreover, Kaiser's Rule and Scree Plot were satisfied.

Table 2. Measurement Scales.

Factor/Item	Corrected Item-to-Total Correlation	Cronbach's Alpha-if-Item-Deleted
KA ($\alpha=0.712$)		
KA 1 - I expect the other researchers will share their knowledge	.480	.686
KA 2 - Others members reply my questions	.652	.487

KA 3 - I know other members would help me, if needed	.478	.693
SV ($\alpha=0.882$)		
SV 1 - Members I interact with share the vision to help others to solve their professional problems	.720	.877
SV 2 - Members I interact with share the same objective to learn from each other	.800	.806
SV 3 - Members I interact with share the same value that helping others to is pleasant	.794	.812
KQ ($\alpha=0.940$)		
KQ 1 - Members I interact with do a good job in their areas	.843	.937
KQ 2 - Members I interact with are experts in their areas	.891	.900
KQ 3 - Members I interact with are qualified in their areas	.893	.899
SL ($\alpha=0.891$)		
SL 1 - Sharing my competences through RG is compatible with my personal values	.829	.807
SL 2 - Sharing my competences through RG complies with my current needs	.823	.816
SL 3 - Sharing my competences through RG complies with my working style	.714	.906
CA ($\alpha=0.925$)		
CA 1 - Sharing my competences through RG will improve my problem solving skills	.824	.909
CA 2 - Sharing my competences through RG will help me to respond to the changes affecting my area	.842	.895
CA 3 - Sharing my competences through RG will make me more effective and performing at work	.874	.868
KU ($\alpha=0.919$)		
KU 1 - I often use knowledge from RG to solve my professional problems	.825	.893
KU 2 - I frequently use knowledge from RG to improve my competences	.881	.846
KU 3 - I regularly use knowledge from RG to manage changes in my work	.803	.910

α = Cronbach's alpha; KA = Knowledge availability; SV = Shared Values; KQ = Knowledge Quality; SL = Shared Language; CA = Competence Acquisition; KU = Knowledge Utilization

4.1.2. Confirmatory Factor Analysis (CFA)

CFA detects those measured variables grouped and associated with underlying constructs, and checks whether data fit the model.

Unlike EFA, CFA has the potential to detect the factor structure of constructs and purify the model from non-valid items, depending on unidimensionality, reliability, and validity criteria [81].

The fit indices satisfy the main goodness-of-fit thresholds ($\chi^2=206.590$; $df=120$; $p\text{-value}=0.000$; $\chi^2/df=1.722$; Root Mean Squared Error of Approximation (RMSEA)=0.0670; $p\text{-value}$ Test of Close Fit=0.0538; Standardized Root Mean Square Residual (StdRMR)=0.0616; Normed Fit Index (NFI)=0.954; Confirmatory Fit Index (CFI)=0.980; Tucker-Lewis Index (TLI) $\hat{=}$ Non-Normed Fit Index (NNFI)=0.974) [70]. First, as for absolute fit indices, the χ^2/df degrees of freedom is excellent. The RMSEA - which, as is common knowledge, typically performs bad when the sample size (N) is low - in this case provides excellent fit statistics, despite its $p\text{-value}$ is not good. However, Std RMR - which is the best index to detect wrong models - is around the threshold of excellence. Incremental fit indices such as NFI, CFI, NNFI are excellent, too. Finally, CFA results show an overall excellent fit.

The goodness-of-fit is further confirmed by the residuals: they do not form any blocks and $|Std\ Residuals| < 3$. Moreover, the Q-plot of Std residuals I signed on the the bisector.

Table 3 reports CFA results for each item and construct: factor loadings are higher than the 0.40 threshold, $|t\text{-values}| > 3.096$ ($p\text{-value} < 0.001$), thus, confirming convergent validity [69] and unidimensionality.

CR is never lower than 0.70 for all the scales, whilst AVE is below threshold (0.50) only for KA, but very close to it – i.e. 0.482 -: the latter result may be generated by the small sample size [82]. Such a scale may require a minor revision in further studies.

Table 3. Confirmatory Factor Analysis Measurement Scales.

Factor/Item	Completely Std loading value	t-value
KA ($\alpha=0.712$; CR= 0.733; AVE= 0.482)		
KA 1 ^a	.572	-
KA 2	.814	5.685
KA 3	.676	5.559
SV ($\alpha=0.882$; CR= 0.885; AVE= 0.719)		
SV 1 ^a	.785	-
SV 2	.889	11.238
SV 3	.867	11.027
KQ ($\alpha=0.940$; CR= 0.941; AVE= 0.842)		
KQ 1 ^a	.876	-
KQ 2	.934	16.819
KQ 3	.941	17.027
SL ($\alpha=0.891$; CR= 0.898; AVE= 0.746)		
SL 1 ^a	.907	-
SL 2	.899	15.175
SL 3	.780	11.869
CA ($\alpha=0.925$; CR= 0.925; AVE= 0.804)		
CA 1 ^a	.890	-
CA 2	.871	14.834
CA 3	.929	17.008
KU ($\alpha=0.919$; CR= 0.922; AVE= 0.797)		
KU 1 ^a	.883	-
KU 2	.935	16.388
KU 3	.862	14.140

α = Cronbach's alpha; CR=composite reliability; AVE=average variance extracted

^a Item with corresponding lambda imposed equal to 1

KA = Knowledge availability; SV = Shared Values; KQ = Knowledge Quality; SL = Shared Language; CA = Competence Acquisition; KU = Knowledge Utilization.

The discriminant check is run by making a comparison of the AVEs of two latent factors, on the one hand, and the coefficient of determination - i.e. square of their correlation coefficient -, on the other hand. If the former is greater than the latter, the discriminant validity between the factors is proven [81; 83]. The results of this research work satisfy this condition for all couples of factors [84], as reported in Table 4.

Table 4. Construct Summary Statistics: Measure Correlations, Reliability Coefficients, and Square Root of AVE.

	KA	SV	KQ	SL	CA	KU	CR	AVE
KA	1						0.733	0.482
SV	0.517	1					0.885	0.719
KQ	0.346	0.458	1				0.941	0.842
SL	0.347	0.443	0.539	1			0.898	0.746
CA	0.411	0.521	0.502	0.738	1		0.925	0.804
KU	0.343	0.442	0.425	0.579	0.805	1	0.922	0.797
Mea	3.636	3.268	3.604	3.483	3.075	2.671		
n								
SD	0.994	0.783	0.931	0.893	0.964	1.064		

KA = Knowledge availability; SV = Shared Values; KQ = Knowledge Quality; SL = Shared Language; CA = Competence Acquisition; KU = Knowledge Utilization; SD = standard deviation; CR = composite reliability; and AVE = average variance extracted.

4.1. Structural Model, Path Analysis, Hypotheses Testing and Full SEM Analysis

PA led to realize the structural model in Figure 1 that was tested through the full SEM analysis. Fit indices were excellent ($\chi^2=254.159$; $df=121$; $p\text{-value}=0.00$; $\chi^2/df=2.101$; $RMSEA=0.0774$; $p\text{-value}$ Test of Close Fit= 0.00346 ; $StdRMR=0.0807$; $NFI=0.943$; $CFI=0.969$; $TLI \triangleq NNFI=0.961$) [70]. The χ^2/df is excellent. As for RMSEA, despite a low-size (N) sample generally making it a bad-performing index - providing generally conservative results -, this index proves the goodness of the model with acceptable fit statistics. Also, Std RMR (the best to detect wrong models) is around the threshold of acceptability. Coherently, also incremental fit indices can be accepted (e.g. NFI) or are sometimes excellent (e.g. NNFI) and the most reliable and commonly used one that is CFI. Hence, the proposed model proves to have an overall excellent goodness-of-fit.

No blocks of residuals are detected, almost all $|Std\ Residuals| < 3$, their $|t\text{-values}| > 3.096$ ($p\text{-value} < 0.001$), and the Q-plot matches the bisector.

The test of the hypothesized relationships is reported in Table 5: results support some hypotheses. In detail, some exogenous constructs impact on the two endogenous variables, namely CA and KU, as shown by the estimates of standardized coefficients.

Table 5. Hypotheses Testing.

Hypothesized Paths	Coefficients
KA → CA	0.077
SV → CA	0.170**
KQ → CA	0.099
SL → CA	0.545*
KA → KU	0.020
SV → KU	0.188**
KQ → KU	0.107
SL → KU	0.142*

* = $p < 0.001$; ** = $p < 0.05$; KA = Knowledge availability; SV = Shared Values; KQ = Knowledge Quality; SL = Shared Language; CA = Competence Acquisition; KU = Knowledge Utilization

5. Discussion and conclusions

5.1. Main findings

SSNS are by now widespread in the academic world and have become part of the work of researchers [35]. They have been studied as means for gaining visibility and reputation [36], but also as milieus for knowledge sharing [40; 41; 42; 85].

To our knowledge, however, this is the first study focusing on the actual use of knowledge obtained from SSNSs by researchers. Investigating if knowledge from SSNSs is useful for researchers in their work is important to understand the actual impact of these platforms on scientific research.

Taking Researchgate as a case study, our work investigated, in particular, the impact of the researcher's attitude towards SSNSs on knowledge use [18; 19; 35]. Two possible attitudes have been considered: 1) researchers see SSNSs as tools giving access to readily available knowledge [2; 40; 41; 42] researchers see SSNSs as scientific communities [38; 50].

Our findings show that researchers actually use the knowledge retrieved or generated on SSNSs in their work, thus supporting the idea that these platforms have an impact on scientific practices and productivity [49]. Respondents in our study confirmed that they incorporate pieces of knowledge obtained from Researchgate into their scientific products (i.e. knowledge utilization) and that they improved their scientific competences through interaction with the members of the social network (i.e. competence acquisition).

The most relevant results of this study, however, relate to the impact of the researcher's attitude on the use of knowledge. While our hypotheses on the positive impact of a "membership attitude" on knowledge use were supported, the relations between "transactional attitude" and "knowledge utilization" or "competence acquisition" were not found to be statistically relevant.

In our hypotheses researchers were assumed to access SSNSs in search for solutions to specific problems. What would induce a researcher to use the knowledge obtained from a SSNS was the availability of knowledge answering his questions on the one hand and the perceived quality of this knowledge on the other. These hypotheses were not supported, proving that in the analyzed case the availability of knowledge and the perception of this knowledge as generated by a reliable source, are not sufficient to determine either its incorporation in scientific products or learning of new competences. This is in contrast with the findings of other studies in related fields, like virtual communities of professionals [52] or entrepreneurs [86]. This might be due to the specific nature of the community considered: scientific researchers. The level of complexity and specificity of the knowledge involved in scientific research make it difficult for researchers to fully rely on unknown sources. This concept deserves further investigation.

On the contrary, our results show a positive link between the two variables associated with the "membership attitude", shared language and shared vision, and the use of knowledge, both in terms of inclusion in scientific products, and as competence learning. Researchers use knowledge obtained from (or generated with) colleagues with a similar language because it is easily understood and easily integrated with their own knowledge [56]. Even stronger is the impact of a "shared vision": feeling part of the same community, in terms of values and objectives, is particularly important for scientists in order to consider the acquired knowledge reliable and compatible with their way of seeing the topics covered [58; 59; 87]. Consequently, considering the SSNS as a community and perceiving a commonality of objectives and values is a necessary prerequisite for the knowledge created on the platforms to have an impact on the products and scientific practices of researchers.

5.2. Implications for practice

Our findings confirm the role that SSNSs play in the contemporary practices of researchers and their impact on scientific production. Several implications for practice arise from this study for different categories of stakeholders. Our investigation suggests that SSNSs have a greater impact when the researcher perceives to be part of the community. People interested in developing and sustaining knowledge sharing through SSNSs may develop mechanisms to motivate members to

participate in the community. For example, research managers can design reward systems to incentive participation.

The same researchers should consider that continuative participation in SSNSs is expected to have a greater impact than occasional use. Developing regular work practices involving the use of SSNSs might improve their productivity.

Developers of SSNSs, on the other hand, should continue to invest in networking functions, thus making stronger the aspect of the system with the greater impact on scientific output. While functionalities offering researchers visibility have short term results on the popularity of SSNSs [36], systems improving their productivity might prove more attractive on the long run.

5.3. Limitations and future research directions

There were several limitations to our study. First it considers only one specific SSNS, Researchgate, and only researcher belonging to one institution, University of Calabria. Even if Researchgate is currently the most popular SSNS and University of Calabria includes researchers with diverse scientific interests and background, these characteristics of the sample limit the generalizability of results. Future research should test the investigated hypotheses in a wider context.

Secondly, two of the hypothesized relations were found to be not statistically significant. Even if this is still a result, highlighting how causal links verified in other contexts [52; 59] do not necessarily apply to SSNSs, the reasons for this difference need further investigation.

The study only considered self-reported evaluations of the impact of SSNSs on scientific practices and productivity. This aspect could be further elaborated through quantitative studies considering objective measure of productivity on the one hand and through qualitative studies investigating the modifications in work practices of researchers on the other.

Finally, the study investigated only two dimensions of the “membership attitude”. Further dimensions are expected to have an impact on knowledge use and should be considered in future studies.

Author Contributions: Conceptualization, Vincenzo Corvello; methodology, Carlo Giglio; formal analysis, Carlo Giglio; writing—original draft preparation, Mariacristina Chimenti; writing—review and editing, Saverino Verteramo; supervision, Vincenzo Corvello and Saverino Verteramo. All authors have read and agreed to the published version of the manuscript”.

Conflicts of Interest: The authors declare no conflict of interest.

References

1. Ensign, P.C. *Knowledge sharing among scientists: Why reputation matters for R&D in multinational firms*; Palgrave Macmillan, 2008.
2. Gokhale, A. A. Collaborative learning enhances critical thinking. *Journal of Technology Education* **1995**, *7*, 22-30.
3. Alonso, F.; Manrique, D.; Martinez, L.; Vines, J. M. Study of the influence of social relationships among students on knowledge building using a moderately constructivist learning model. *Journal of Educational Computing Research* **2015**, *51*, 417–439, available at <https://doi.org/10.2190/EC.51.4.c>
4. Levy, M.; Hadar, I.; Te'eni, D.; Unkelos-Shpigel, N.; Sherman, S.; Harel, N. Social networking in an academic conference context: insights from a case study. *Information Technology & People* **2016**, *29*, 51-68.
5. Yan, W.; Zhang, Y. Research universities on the ResearchGate social networking site: an examination of institutional differences, research activity level, and social networks formed. *Journal of Informetrics* **2018**, *12*, 385–400.
6. Koranteng, F.N.; Wiafe, I. Factors that Promote Knowledge Sharing on Academic Social Networking Sites: An Empirical Study. *Education and Information Technologies* **2019**, *24*, 1211–1236, available at: <https://doi.org/10.1007/s10639-018-9825-0>
7. Tsovaltzi, D.; Greenhow, C.; Asterhan, C. When friends argue: Learning from and through social network site discussions. *Computers in Human Behavior* **2015**, *53*, 567-569.
8. Ortega, J. L. *Social network sites for scientists: A quantitative survey*, Chandos Publishing, Oxford, 2016.

9. Lytras, M.D.; Visvizi, A.; Daniela, L.; Sarirete, A.; Ordonez De Pablos, P. Social Networks Research for Sustainable Smart Education. *Sustainability* **2018**, *10*, 2974.
10. Zhao, J.; Zhu, C.; Peng, Z.; Xu, X.; Liu, Y. User Willingness toward Knowledge Sharing in Social Networks. *Sustainability* **2018**, *10*, 4680.
11. Corvello, V.; Genovese, A.; Verteramo, S. Knowledge sharing among users of scientific social networking platforms", in G. Phillips-Wren, S. Carlsson, A. Respício, & P. Brézillon (Ed.s), DSS 2.0 – Supporting decision making with new technologies, pp. 369–380, Retrieved November 10, 2016 from. <http://ebooks.iospress.nl/volumearticle/36223>
12. Elsayed, A. M. The use of academic social networks among Arab researchers: A Survey. *Social Science Computer Review* **2016**, *34*, 378–391, available at: <https://doi.org/10.1177/0894439315589146>
13. ResearchGate. Available online: <https://www.researchgate.net/about> (accessed on 23 March 2020).
14. Academia.edu. Available online: <https://www.academia.edu/> (accessed on 23 March 2020).
15. Mendeley. Available online: https://www.mendeley.com/?interaction_required=true ((accessed on 23 March 2020)
16. Jordan, K. Academics' awareness, perceptions and uses of social networking sites: analysis of a social networking sites survey dataset. **2014** available at SSRN: <http://dx.doi.org/10.2139/ssrn.2507318>
17. Dermentzi, E.; Papagiannidis, S.; Osorio Toro, C.; Yannopoulou, N. Academic engagement: differences between intention to adopt Social Networking Sites and other online technologies. *Computers in Human Behavior* **2016**, *61*, 321-332.
18. Ortega, J. L. Toward a homogenization of academic social sites: a longitudinal study of profiles in Academia.edu, Google Scholar Citations and ResearchGate. *Online Information Review* **2017**, *41*, 812–825.
19. Mason, S. Adoption and usage of Academic Social Networks: a Japan case study. *Scientometrics* **2020**, *122*, 1751–1767.
20. Manca, S.; Ranieri, M. "Yes for sharing, no for teaching!": social Media in academic practices. *The Internet and Higher Education* **2016**, *29*, 63-74.
21. Sababi, M.; Marashi, S.-A.; Pourmajidian, M.; Tabatabaei, S.; Darki, F.; Sadrzadeh, M. R. et al. How accessibility influences citation counts: the case of citations to the full text articles available from ResearchGate. *A Journal on Research Policy and Evaluation* **2017**, *5*, 1–12.
22. Jeng, W.; He, D.; Jiang, J. User participation in an academic social networking service: a survey of open group users on Mendeley. *Journal of the Association for Information Science and Technology* **2015**, *66*, 890–904.
23. Lee, S.; Bozeman, B. The Impact of Research Collaboration on Scientific Productivity. *Social Studies of Science* **2005**, *35*, 673–702.
24. Defazio, D.; Lockett, A.; Wright, M. Funding incentives, collaborative dynamics and scientific productivity: Evidence from the EU framework program. *Research Policy* **2009**, *38*, 293-305.
25. Duque, R. B.; Ynalvez, M.; Sooryamoorthy, R.; Mbatia, P.; Dzorgbo, D.-B. S.; Shrum, W. Collaboration Paradox: Scientific Productivity, the Internet, and Problems of Research in Developing Areas. *Social Studies of Science* **2005**, *35*, 755–785.
26. Corley, E.A.; Bozeman, B.; Zhang, X.; Tsai, C. C. The expanded scientific and technical human capital model: the addition of a cultural dimension. *Journal of Technology Transfer* **2019**, *44*, 681–699.
27. Pang, S.; Bao, P.; Hao, W.; Kim, J.; Gu, W. Knowledge Sharing Platforms: An Empirical Study of the Factors Affecting Continued Use Intention. *Sustainability* **2020**, *12*, 2341.
28. Kpolovie, P. J. Multiple Prediction Of Research Productivity: H-Index. *Advances Social Sciences Research Journal* **2018**, *5*, 110-135.
29. Gómez-Solórzano, M.; Tortoriello, M.; Soda, G. Instrumental and affective ties within the laboratory: The impact of informal cliques on innovative productivity. *Strategic Management Journal* **2019**, *40*, 1593–1609.
30. Auranen, O.; Nieminen, M. University research funding and publication performance—An international comparison. *Research Policy* **2010**, *39*, 822-834.
31. Fullwood, R.; Rowley, J. An investigation of factors affecting knowledge sharing amongst UK academics. *Journal of Knowledge Management* **2017**, *21*, 1254-1271.
32. Rahman, M.; Osmangani, A.; Daud, N.; Abdelfattah, F. Knowledge sharing behaviors among non academic staff of higher learning institutions: Attitude, subjective norms and behavioral intention embedded model. *Library Review* **2016**, *65*, 65-83.
33. Killingsworth, B.; Xue, Y.; Liu, Y. Factors influencing knowledge sharing among global virtual teams. *Team Performance Management* **2016**, *22*, 284-300.

34. Hao, Q.; Yang, W.; Shi, Y. Characterizing the relationship between conscientiousness and knowledge sharing behavior in virtual teams: An interactionist approach. *Computers in Human Behavior* **2019**, *91*, 42-51.
35. Yan, W.; Zhang, Y. User behaviors and network characteristics of US research universities on an academic social networking site. *Higher Education* **2019**, *78*, 221-240.
36. D'Alessandro, S.; Miles, M.; Martínez-López, F.J.; Anaya-Sánchez, R.; Esteban-Millat, I.; Torrez-Meruvia, H. Promote or Perish? A brief note on academic social networking sites and academic reputation. *Journal of Marketing Management* **2020**, *36*, 405-411.
37. Ostermaier-Grabow, A.; Linek, S.B. Communication and Self-Presentation Behavior on Academic Social Networking Sites: An Exploratory Case Study on Profiles and Discussion Threads on ResearchGate. *Journal of the Association for Information Science and Technology* **2019**, *70*, 1153-1164.
38. Nández, G.; Borrego A. Use of social networks for academic purposes: a case study. *The Electronic Library* **2013**, *31*, 781-791.
39. Lee, Y.-H.; Hsiao, C.; Weng, J.; Chen, Y.-H. The impacts of relational capital on self-disclosure in virtual communities: A cross-level analysis of key moderators. *Information Technology & People* **2020** (in press).
40. Deng, Y.; Xie, Y.; Li, Y.; Yang, M.; Du, N.; Fan, W.; Lei, K.; Shen, Y. Multitask learning with multi-view attention for answer selection and knowledge base question answering. Proceedings of The Thirty-Third AAAI Conference on Artificial Intelligence, AAAI 2019, The Thirty-First Innovative Applications of Artificial Intelligence Conference, IAAI 2019, The Ninth AAAI Symposium on Educational Advances in Artificial Intelligence, EAAI 2019, Honolulu, Hawaii, USA, January 27 - February 1, **2019**, 6318-6325.
41. Li, L.; Zhang, C.; He, D.; Du, J.T. Researchers' judgment criteria of high-quality answers on academic social Q&A platforms. *Online Information Review* **2020**, *44*, 603-623.
42. Waheed, M.; Klobas, J.E.; Ain, N. Unveiling knowledge quality, researcher satisfaction, learning, and loyalty: A model of academic social media success", *Information Technology & People* **2020** (in press).
43. Almousa, O.S. Users' distribution and behavior in academic social networking sites. *International Journal of e-Collaboration* **2018**, *14*, 49-65.
44. Jordan, K. From Social Networks to Publishing Platforms: A Review of the History and Scholarship of Academic Social Network Sites. *Frontiers in Digital Humanities* **2019**, *6*.
45. Williams, A.E. Exploring the utility of Academia.edu: a SWOT analysis. *Information and Learning Science* **2018**, *119*, 662-666.
46. Lee, J.; Oh, S.; Dong, H.; Wang, F.; Burnett, G. Motivations for self-archiving on an academic social networking site: A study on researchgate. *Journal of the Association for Information Science and Technology* **2019**, *70*, 563-574.
47. Oh, J. S.; Jeng, W. Groups in academic social networking services: an exploration of their potential as a platform for multi-disciplinary collaboration. In IEEE Third International Conference on Privacy, Security, Risk and Trust and 2011 IEEE Third International Conference on Social Computing, Boston, MA, **2011**, 545-548.
48. Alheyasat, O. Examination expertise sharing in academic social networks using graphs: the case of ResearchGate. *Contemporary engineering sciences* **2015**, *8*, 137-151, available at: <http://dx.doi.org/10.12988/ces.2015.515>
49. Manca, S. Researchgate and academia.edu as networked socio-technical systems for scholarly communication: A literature review. *Research in Learning Technology* **2018**, *26*, 1-16.
50. Yan, W.; Zhang, Y.; Bromfield, W. Analyzing the follower-follower ratio to determine user characteristics and institutional participation differences among research universities on ResearchGate, *Scientometrics* **2018**, *115*, 299-316.
51. Djonov, E. and Van Leeuwen, T. Social media as semiotic technology and social practice: the case of ResearchGate's design and its potential to transform social practice, *Social Semiotics* **2018**, *28*, 641-664.
52. Chen, C.-J.; Hung S. W. To give or to receive? Factors influencing members' knowledge sharing and community promotion in professional virtual communities, *Information and Management* **2010**, *47*, 226-236.
53. Jin, J.; Li, Y.; Zhong, X. and Zhai, L. Why users contribute knowledge to online communities: An empirical study of an online social Q&A community. *Information & Management* **2015**, *52*, 840-849.
54. Jiang, G.; Shang, J.; Liu, W.; Feng, X.; Lei, J. Modeling the dynamics of online review life cycle: Role of social and economic moderations. *European Journal of Operational Research* **2020**, *285*, 360-379.
55. Hara, N.; Foon Hew, K. Knowledge-sharing in an online community of health-care professionals. *Information Technology & People* **2007**, *20*, 235-261.

56. Lepori, B.; Thelwall, M.; Hoorani, B.H. Which US and European Higher Education Institutions are visible in ResearchGate and what affects their RG score?. *Journal of Informetrics* **2018**, *12*, 806-818.
57. Chang, H. H.; Chuang, S. S. Social capital and individual motivations on knowledge sharing: Participant involvement as a moderator, *Information and Management* **2011**, *48*, 9-18.
58. Levin, D.Z.; Whitener, E.M.; Cross, R. Perceived trustworthiness of knowledge sources: The moderating impact of relationship length. *Journal of Applied Psychology* **2006**, *91*, 1163-1171.
59. Chiu, C. M.; Hsu, M. H.; Wang, E. T. G. Understanding knowledge sharing in virtual communities: An integration of social capital and social cognitive theories. *Decision Support Systems* **2006**, *42*, 1872-1888.
60. Han, H.; Hsu, L.; Sheu, C. Application of the theory of planned behavior to green hotel choice: Testing the effect of environmental friendly activities. *Tourism Management* **2010**, *31*, 325-334.
61. Cohen, J. B.; Fishbein, M.; Ahtolam, O. T. The Nature and Uses of Expectancy-Value Models in Consumer Attitude Research. *Journal of Marketing Research* **1972**, *9*, 456-460.
62. Churchill, G. A. A paradigm for developing better measures of marketing constructs. *Journal of Marketing Research* **1979**, *16*, 64-73.
63. Nunnally, J. C. *Psychometric theory*, McGraw-Hill, New York, NY, 1978.
64. Podsakoff, P. M.; MacKenzie, S. B.; Lee, J.-Y.; Podsakoff, N. P. Common method biases in behavioral research: A critical review of the literature and recommended remedies. *Journal of Applied Psychology* **2003**, *88*, 879-903.
65. Streiner, D. L. Finding our way: An introduction to path analysis. *The Canadian Journal of Psychiatry* **2005**, *50*, 115-122.
66. Streiner, D. L. Building a better model: An introduction to structural equation modelling. *The Canadian Journal of Psychiatry* **2006**, *51*, 317-324.
67. Kline, R. B. *Principles and practice of structural equation modeling*, Guilford Press, New York NY, 1998.
68. Hair, J. F.; Tatham, R. L.; Anderson, R. E.; Black, W. *Multivariate Data Analysis with Readings*, Prentice-Hall, 1998.
69. Anderson, J. C. and Gerbing, D. W. Structural equation modeling in practice: a review and recommended two-step approach. *Psychological Bulletin* **1988**, *103*, 411-423.
70. Hair, Jr.; J. F.; Black.; W. C.; Babin.; B. J.; Anderson.; R. E.; & L.Tatham.; R. *Multivariate Data Analysis*. New Jersey: Pearson International Edition, 2006.
71. Ford, J. K.; MacCallum, R. C.; Tait, M. The applications of exploratory factor analysis in applied psychology: a critical review and analysis. *Personnel Psychology*. **1986**, *39*, 291-314.
72. Cronbach, L. J. Coefficient alpha and the internal structure of tests, *Psychometrika* **1951**, *16*, 297-334.
73. Jöreskog, K. G.; Sörbom, D. *LISREL 8: Structural equation modeling with the SIMPLIS command language*, Scientific Software International, 1993.
74. Kim, K. S. *Structural Equation Modeling Analysis*, Hannarae, Seoul, 2008.
75. Reisinger, Y.; Turner, L. Structural equation modeling with lisrel: Application in tourism. *Tourism Management* **1999**, *20*, 71-88.
76. De Vellis, R. F. *Scale development: theory and applications*, SAGE Publications, 1991.
77. Huh, M. H. *Statistics Analysis*, Bobmunsa, Seoul, 2001.
78. Horn, J. L. A rationale and test for the number of factors in factor analysis, *Psychometrika* **1965**, *30*, 179-185.
79. Keeling, K. B. A regression equation for determining the dimensionality of data. *Multivariate Behavioral Research* **2000**, *35*, 457-468.
80. Lautenschlager, G. J.; Lance, C. E.; Flaherty, V. L. Parallel analysis criteria: Revised equations for estimating the latent roots of random data correlation matrices, *Educational and Psychological Measurement* **1989**, *49*, 339-345.
81. Kim, D. U. *AMOS A to Z: Structural Equation Modeling for Writing Papers*, Hakhyunsa, Paju, 2008.
82. Bagozzi, R. P.; Yi, Y. On the evaluation of structural equation models. *Journal of the Academy of Marketing Science* **1988**, *16*, 74-94.
83. Kim, K. Analysis of structural equation model for the student pleasure travel market: Motivation, involvement, satisfaction, and destination loyalty. *Journal of Travel and Tourism Marketing* **2008**, *24*, 297-313.
84. Fornell, C.; Larcker, D. F. Evaluating structural equation models with unobservable variables and measurement error. *Journal of Marketing Research* **1981**, *18*, 39-50.
85. Corvello, V.; Felicetti, A.M. Factors affecting the utilization of knowledge acquired by researchers from scientific social networks: An empirical analysis, *Knowledge Management* **2014**, *13*, 26.

86. Hafeez, K.; Alghatas, F.M.; Foroudi, P.; Nguyen, B.; Gupta, S. Knowledge sharing by entrepreneurs in a virtual community of practice VCoP. *Information Technology & People* **2019**, *32*, 405-429.
87. Evans M.; Wensley A.; Frissen I. The mediating effects of trustworthiness on social-cognitive factors and knowledge sharing in a large professional service firm. *Electronic Journal of Knowledge Management* **2015**, *13*, 240– 254.