

Influence of non-puddled transplanting and residues of previous mustard on rice (*Oryza sativa* L.)

Mohammad Mobarak Hossain^{*1}, Mahfuza Begum², Md. Moshir Rahman², Abul Hashem³, Richard W. Bell⁴, Enamul Haque⁴

Abstract

On-farm research was conducted at Gouripur sub-district under Mymensingh district of Bangladesh during the *boro* (mid November-June) season in 2013-14 and 2014-15 to evaluate the performance of non-puddled rice cultivation with and without crop residue retention. The rice var. *BRRi dhan28* was transplanted by two tillage practices *viz.*, puddled conventional tillage (CT) and non-puddled strip tillage (ST) and at two levels of mustard residues, *i.e.*, no residue (R₀) and 50% residue (R₅₀). The experiment was designed in a randomized complete block design with four replications. There were no significant yield differences between tillage practices and residue levels in 2013-14. But in the following year, ST yielded 9% more grain compared to CT leading to 22% higher BCR. Retention of 50% residue increased yield by 3% compared to no-residue, which contributed to 10% higher benefit-cost ratio (BCR). The ST combined with 50% residue retention yielded the highest grain yield (5.81 t ha⁻¹) which contributed to produce the highest BCR (1.06).

Keywords: crop residues, non-puddled, strip tillage, yield

* Corresponding Author: mm.hossain@irri.org, Tel: +880 1714 782704

¹Rice Breeding Platform (Breeding for Favorable Environment), International Rice Research Institute, Dhaka 1213, Bangladesh; mm.hossain@irri.org

²Department of Agronomy, Bangladesh Agricultural University, Mymensingh 2202, Bangladesh; mzap_27@yahoo.co.uk (MB); rahmanag63@gmail.com (MMR)

³Department of Primary Industries and Regional Development, Industry and Economic Development, 75 York Road, Northam 6401 WA; hashemau71@gmail.com

⁴Agricultural Sciences, Murdoch University, South St, Murdoch WA 6150, Australia; r.bell@murdoch.edu.au (RB); e.haque@murdoch.edu.au (EH)

Introduction

Most of the rice (*Oryza sativa* L.) farmers in the Asian continent establish seedlings by transplanting in puddled soil. Land is prepared by one or two passes in dry condition followed by exposure to the sun for a couple of days. Then after inundation, the final field is prepared by ploughing, cross ploughing and laddering in standing water. However, this traditional puddling method is labour, fuel, time and capital consuming (Islam *et al.*, 2014). Nowadays most of the tillage operations for puddling soil in Bangladesh are done by power tiller which is detrimental to physical soil conditions through destroying soil aggregates, breaking capillary pores, and dispersing the soils (Miah *et al.*, 2002). Moreover, puddling produces a hard setting soil when dry which makes land preparation difficult for the following crops (Islam *et al.* 2012). Not only that, puddled rice transplanting consumes about 20-40 % of the total water required for raising a crop, and it also promotes the formation of hardpan (Singh *et al.*, 2014). Furthermore, it reduces soil organic carbon which apart from decreasing soil fertility accelerates the losses of irrigation water and damage to the environment (Sayre and Hobbs, 2004). Adoption of minimum tillage and non-puddled transplanting might be an alternative to puddled transplanting to overcome these destructive impacts (Singh *et al.*, 2014). This technology has potential to allow saving in labour, energy, water and time during rice establishment as well as improving soil fertility (Islam *et al.*, 2012). Concerning the soil health, another agronomic option is the retaining the residues of previously cultivated crops for their effects on soil physical, chemical and biological functions as well as water and soil quality and on crop yield (Kumar and Goh, 2000). Residue retention maintains soil micro-organisms and microbial activity which can also lead to weed suppression by the biological agents leading to increase crop yield (Shrivastav *et al.*, 2015). Considerable research work was done on puddled transplanting, but there is limited information on non-puddled rice transplanting with crop residue retention under Bangladesh conditions (Haque *et al.* 2016; Haque and Bell, 2019). Therefore, the present study was conducted to examine the performance of rice using non-puddled transplanting system with the retention of mustard residues.

Materials and Methods

The experiment had conducted on a farmer's field of Durbachara, Gouripur, Mymensingh, Bangladesh (the latitude of 24.75° N and the longitude of 90.50° E) (Fig. 1) during the *boro* (mid November-June) season in 2013-14 and 2014-15. This experimental area belongs to the Old Brahmaputra Floodplain, which is characterized by dark grey non-calcareous

alluvium soils belong to the *Sonatala* series. Soil characteristics are presented in Table 1. Climatic (rainfall and thermal condition) data were collected from the nearest weather station and illustrated in Fig. 2. The treatments were: (i) puddled soil condition following conventional tillage (CT) and (ii) non-puddled soil condition using strip tillage (ST) and; two levels of mustard residues viz., no-residue (R_0) and 50% residue (R_{50}). The treatments was laid out in randomized complete block design with four replications using unit plots of $9\text{ m} \times 5\text{ m}$. In tillage practice, CT consisted of two passes of primary rotary tillage by two-wheeler tractor (2 WT) and exposure to the sun for two days followed by inundation of the whole plot and puddling by 2WT with two passes to complete land preparation. The ST was done by a Versatile Multi-crop Planter (Haque *et al.*, 2016) in a single pass operation before flooding the field. Three days before ST, pre-plant glyphosate herbicide was applied @ $75\text{ ml } 10\text{ L}^{-1}$ water. After ST, the land had inundated with 3-5 cm standing water for one day before transplanting to allow the disturbed strip to soft enough to transplant seedlings (Islam *et al.*, 2014). Thirty-five day-old seedlings of rice var. *BRRI dhan28* were transplanted. Fertilizers have applied according to the recommendation of BRRI (2014). A spacing of $25\text{ cm} \times 15\text{ cm}$ was maintained for both CT and ST with 2 or 3 seedlings hill $^{-1}$. The crops were harvested at maturity from $3\text{ m} \times 3\text{ m}$ in each plot, and then data were recorded. Grain yield was adjusted to 14% moisture content. Data were subjected to two-way ANOVA using *STAR* software and means were separated by Duncan's Multiple Range Test (Gomez and Gomez, 1984).

Table 1: The morphological, physical and chemical properties of soil (0-15 cm) of the experimental field

A. Morphological characteristics	
i. Soil Tract	: Old Brahmaputra Alluvium
ii. Soil Series	: Sonatola Series
iii. Parent materials	: Old Brahmaputra River Borne Deposit
B. Physical characteristics of soil	
i. Sand (2.00-0.50 mm)	: 25.2%
ii. Silt (0.5-0.002 mm)	: 72.0%
iii. Clay (< 0.002 mm)	: 2.8%
iv. Textural class	: Silty loam
C. Chemical characteristics of soil	
i. pH	: 6.71
ii. Organic matter (%)	: 0.93
iii. Total nitrogen (%)	: 0.13
iv. Available sulphur (mg kg^{-1})	: 13.9
v. Available phosphorus (mg kg^{-1})	: 16.3
vi. Exchangeable potassium (mg kg^{-1})	: 0.28

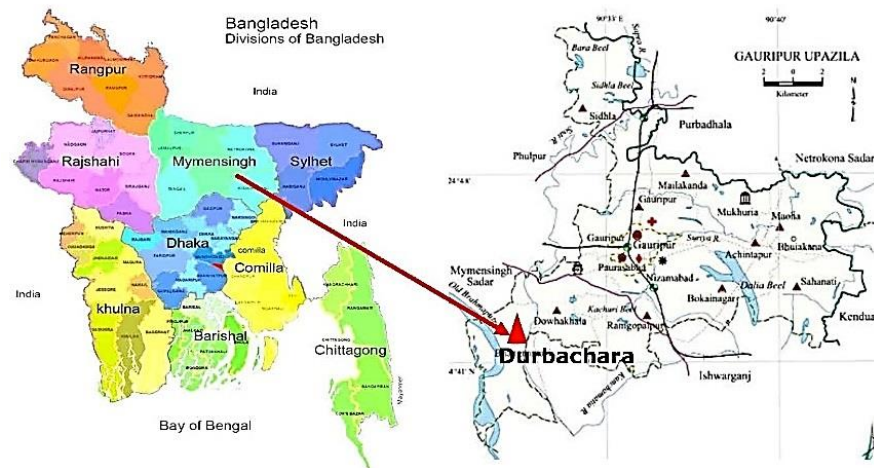


Figure 1. Map of Bangladesh showing the site of on-farm experiment

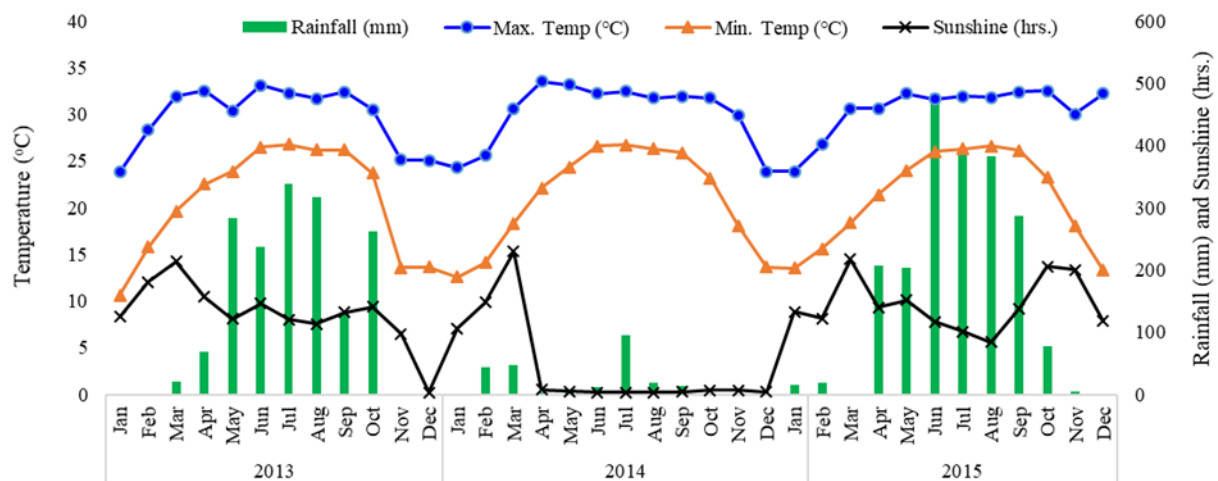


Figure 2. Monthly average temperature, total rainfall, relative humidity and sunshine hours of the experimental site in 2013-2015

Results

Combined effect of tillage practice and residue levels on yield attributes, yield and the benefit-cost ratio (BCR) of rice

Combination of tillage practice and residue levels exerted significant ($p \leq 0.05$) effect only on BCR while the rest of the parameters did not vary significantly ($p > 0.05$) during 2013-14. Whereas in 2014-15, a combination of treatments had a significant impact on all the parameters except plant height, panicle length, number of sterile spikelets panicle⁻¹ and weight of thousand grain (Table 2). Strip tillage plus 50% residue retained produced the highest BCR which largely resulted from the highest grain yield. The highest grain yield might be attributed to the highest number of effective tillers m⁻² and grains panicle⁻¹, and the lowest numbers of non-effective

tillers m^{-2} . CT or ST with 50% residue yielded the higher values of these parameters compared to no-residues. CT without residue produced the lowest grain yield and BCR. Compared to CT and no-residue, ST and 50% residue increased the grain yield and BCR by 9% and 22%, and 3% and 10%, respectively.

Table 2. Combined effect of tillage practice and residue levels on yield contributing characters and yield of rice

Tillage practice	Residue levels	Plant height (cm)	No. of effective tillers m^{-2}	No. of non-effective tillers m^{-2}	Panicle length (cm)	No. of grains panicle ⁻¹	No. of sterile spikelets panicle ⁻¹	1000 grain weight (gm)	Grain yield (t ha^{-1})	Benefit-Cost Ratio
2013-14										
CT	R ₀	109.3	207	45	24.2	162	53	29.5	5.21	0.73b
	R ₅₀	111.5	211	43	24.6	158	54	29.2	5.19	0.71b
ST	R ₀	110.8	209	43	24.6	158	53	29.8	5.20	0.80a
	R ₅₀	109.1	207	44	24.5	160	55	30.3	5.20	0.88a
LSD _(0.05)		NS	NS	NS	NS	NS	NS	NS	NS	0.18
CV (%)		2.74	12.67	11.71	2.40	3.47	2.27	1.32	0.34	4.72
2014-15										
CT	R ₀	108.3	359c	84a	24.3	100c	41	21.6	5.17d	0.78bc
	R ₅₀	106.3	363c	70b	24.5	121b	39	22.2	5.29c	0.83c
ST	R ₀	104.2	376b	53c	24.4	129ab	41	22.9	5.60b	0.92b
	R ₅₀	106.3	388a	41d	24.2	139a	40	23.0	5.81a	1.06a
LSD _(0.05)		NS	6.50	4.25	NS	11.72	NS	NS	0.13	0.045
CV (%)		4.60	1.20	5.68	3.84	5.14	8.88	6.83	2.10	1.24

In a column, the means with similar letters do not differ significantly at $P < 0.05$

CT= Conventional tillage, ST= Strip tillage, R₀=No-residue, R₅₀= 50% residue, LSD= Least significant difference, CV= Co-efficient of variance

Discussion

Effect on the yield of rice

The higher yield in ST might have attributed to the changes in soil properties *viz.* the higher porosity and better soil moisture conservation in ST favoured the more robust root growth and nutrient uptake resulted in increasing grain yield. These benefits however were evident in the second year but not in first year suggesting that they require at least a year to develop. These results agree Huang *et al.* (2012) who stated that minimum tillage (MT) non-puddled condition provides more favourable soil physical environment for better crop growth than CT. Pittelkow *et al.* (2015) and Qi *et al.* (2011) also reported that higher and more stable crop yields in MT than CT. In CT, heavy smearing of the sub-surface soil by rotary tillage forms a hardpan. Loss of structure, soil degradation and disruption of the soil pores are likely to hamper root growth especially in *Rabi* season (winter) crop.

On the other hand, crop yield increase in MT might have occurred from the improved soil structure and stability. They may facilitate better water holding capacity and drainage that reduces the extremes of water logging and drought (Holland, 2004), ultimately improving soil

fertility by sequestering organic carbon in farmland soils (Alam *et al.*, 2019). This finding supports the research result of Liu *et al.* (2010) who found 20% higher maize yield in MT than CT due to increase of soil organic carbon, soil total nitrogen and soil total phosphorus by 25, 18 and 7%, respectively. These results have implications for understanding how conservation tillage practices increase crop yield by improving soil quality and sustainability in non-puddled strip tillage practices as also reported by Hossain *et al.* (2016) and Mvumi *et al.* (2017). Some research findings also concluded no yield differences between ST and CT. Haque *et al.* (2016) found the similar grain yield of rice in non-puddled ST transplanting and CT, which confirms the earlier findings of Hossain *et al.* (2015) who also found no yield penalty of wheat and rice between ST and CT. In another study, Sharma *et al.* (2011) also reported similar rice yield in non-puddled transplanting to the CT. Wiatrak *et al.* (2005) found identical cotton yield in ST and CT while Al-Kaisi and Licht (2004) found the similar corn and soybean yield in ST, NT and CT. The finding of these studies confirms the result of the present study where no significant yield loss was found in the first year of the experiment.

In this study, retention of 50 % of mustard residues increased the grain yield of rice by about 120-210 kg ha⁻¹ over no-residue. Research finding of Shrivastav *et al.* (2015) confirm that standing residue converts to mineralized nutrients which causes sufficient crop growth and facilitates higher yield over no-residue. Kaschuk *et al.* (2010) and Qin *et al.* (2010) concluded straw residue retention directly increases the input of organic matter and nutrients into the soil, in turn improving soil nutrient availability for crop growth and better yield over no-residue. The earlier study of Thomas *et al.* (2007) and Govaerts *et al.* (2007) also found the benefits of residue retention on crop yield. Improved soil fertility and water availability might occur from the supplies of organic matter from straw residue for heterotrophic N fixing micro-organisms, which could increase nitrogen supply to the crops. Straw residues for controlling weeds in different crops have suggested by Devasinghe *et al.* (2011), and Hossain *et al.* (2016) concluded residues restrict weed growth and thus retards crop-weed competition.

Effect on the benefit-cost ratio (BCR) of rice

Partial economic analysis disclosed that among the treatments ST with 50% residue earned the highest profit. Variation in BCR might have attributed to the variation in grain yield and cost required for rice cultivation. One hectare of land preparation in CT required US\$ 190.80 while ST required US\$ 35.80. Thus, ST saved around 68% of the cost for land preparation. This estimation is in line with Haque *et al.* (2016) estimating 70% savings in land preparation in ST over CT since the lowest land preparation cost was recorded in ST (US\$ 32.54 ha⁻¹) while the

higher land preparation cost was incurred in CT (US\$110.29 ha⁻¹). Islam *et al.* (2014) estimated 49% savings from land preparation in ST over CT. Savings in ST might attributed to the fewer tillage passes and lower fuel consumption for land preparation than in CT. In addition to that, ST reduced fuel and labour requirements during land preparation. About 10% higher profit after retaining 50% residue might have occurred solely from 3% higher grain yield than no-residue. Therefore, the two year study confirmed that rice cultivation through practising non-puddled strip tillage with the retention of 50% crop residue could achieve a higher profit compared to existing conventional tillage of rice cultivation in both years and higher yield in the second year of the experiment.

Conclusion

Based on this two-year study, we can conclude that non-puddled rice transplanting with the retention of crop residues was a profitable alternative to existing conventional tillage operation and farmers are likely to be benefited by increased profit through adopting this practice.

Acknowledgements

This study was a part of PhD research work which was funded by the Australian Centre for International Agricultural Research (ACIAR).

References

- Al-Kaisi M, Licht A. 2004. Effect of strip tillage on corn nitrogen uptake and residual soil nitrate accumulation compared with no-tillage and chisel plow. *Agronomy Journal* 96, 1164-1171. DOI: [org/10.2134/agronj2004.1164](https://doi.org/10.2134/agronj2004.1164)
- Alam MK, Bell RW and Biswas WK 2019. Increases in soil sequestered carbon under conservation agriculture cropping decrease the estimated greenhouse gas emissions of wetland rice using life cycle assessment. *Journal of Cleaner Production* 224, 72-87. 2019. DOI: [org/10.1016/j.jclepro.2019.03.21](https://doi.org/10.1016/j.jclepro.2019.03.21).
- BRRI (Bangladesh Rice Research Institute). 2014. *Modern Rice Cultivation*. The 16th edition. BRRI, Joydebpur, Gazipur-1701, Bangladesh. p. 5-28.
- Devasinghe D, Premarathne KP, Sangakkara UR. 2011. Weed management by rice straw mulching in direct seeded lowland rice (*Oryza sativa* L.). *Tropical Agricultural Research* 22(3), 263 - 272. DOI: [org/10.4038/tar.v22i3.3699](https://doi.org/10.4038/tar.v22i3.3699)

- Gomez KA, Gomez AA. 1984. Statistical Procedure for Agricultural Research. The 2nd edition. John Wiley & Sons. Inc., New York. p. 680.
- Govaerts B, Fuentes M, Mezzalama M, Nicol JM, Deckers J, Etchevers JD, Figueroa SB, Sayre KD. 2007. Infiltration, soil moisture, root rot and nematode populations after 12 years of different tillage, residue and crop rotation managements. *Soil and Tillage Research* 94, 209-219. DOI: [org/10.1016/j.still.2006.07.013](https://doi.org/10.1016/j.still.2006.07.013)
- Haque ME, Bell RW. 2019. Non-puddled rice performance in on-farm demonstrations. *Plant Production Science* 22, 23-45. DOI: [10.1080/1343943X.2018.1564335](https://doi.org/10.1080/1343943X.2018.1564335)
- Haque ME, Bell RW, Islam MA, Rahman MA. 2016. Minimum tillage non-puddled transplanting: an alternative crop establishment strategy for rice in conservation agriculture cropping systems. *Field Crops Research* 185, 31-39. DOI: [org/10.1016/j.fcr.2015.10.018](https://doi.org/10.1016/j.fcr.2015.10.018)
- Holland JM. 2004. The environmental consequences of adopting conservation tillage in Europe: reviewing the evidence. *Agriculture, Ecosystems and Environment* 103(1), 1-25. DOI: [org/10.1016/j.agee.2003.12.018](https://doi.org/10.1016/j.agee.2003.12.018)
- Hossain MI, Sarker MJU, Haque MA. 2015. Status of conservation agriculture-based tillage technology for crop production in Bangladesh. *Bangladesh Journal of Agricultural Research* 40(2), 235-248. DOI: [org/10.3329/bjar.v40i2.24561](https://doi.org/10.3329/bjar.v40i2.24561)
- Hossain MM, Begum M, Rahman MM, Hashem A. 2016. Response of T. *Aman* and *Boro* rice to residue retention under strip tillage. *Bangladesh Agronomy Journal* 18(2), 39-44. DOI: [org/10.3329/baj.v18i2.28902](https://doi.org/10.3329/baj.v18i2.28902)
- Huang G, Chai Q, Feng F, Yu A. 2012. Effects of different tillage systems on soil properties, root growth, grain yield and water use efficiency of winter wheat (*Triticum aestivum* L.) in Arid Northwest China. *Journal of Integrative Agriculture* 11(8), 1286-1296. DOI: [org/10.1016/S2095-3119\(12\)60125-7](https://doi.org/10.1016/S2095-3119(12)60125-7)
- Islam AKMS, Hossain MM, Saleque MA, Rahman MA, Karmakar B, Haque ME. 2012. Effect of minimum tillage on soil properties, crop growth and yield of aman rice in drought prone northwest Bangladesh. *Bangladesh Agronomy Journal* 15(1), 43-51.
- Islam AKMS, Hossain MM, Saleque MA. 2014. Effect of non-puddled transplanting on the growth and yield of dry season rice (*Oryza sativa* L.) in High Barind Tract. *The Agriculturists* 12(2), 91-97. DOI: [org/10.3329/agric.v12i2.21736](https://doi.org/10.3329/agric.v12i2.21736)
- Kaschuk G, Alberton O, Hungria M. 2010. Three decades of soil microbial biomass studies in Brazilian ecosystems: lessons learned about soil quality and indications for improving

- sustainability. *Soil Biology and Biochemistry* 42, 1-13. DOI: [org/10.1016/j.soilbio.2009.08.020](https://doi.org/10.1016/j.soilbio.2009.08.020)
- Kumar K, Goh KM. 2000. Crop residues and management practices: effects on soil quality, soil nitrogen dynamics, crop yield and nitrogen recovery. *Advances in Agronomy* 68, 198-279. DOI: [org/10.1016/S0065-2113\(08\)60846-9](https://doi.org/10.1016/S0065-2113(08)60846-9)
- Liu EK, Zhao BQ, Mei XR, So HB, Li J, Li XY. 2010. Effects of no-tillage management on soil biochemical characteristics in northern China. *The Journal of Agricultural Science* 148(2), 217-223. DOI: [org/10.1017/S0021859609990463](https://doi.org/10.1017/S0021859609990463)
- Miah MAM, Islam MS, Miah MTH. 2002. Socio-economic impacts of farm mechanization on the livelihoods of rural labourers in Bangladesh. *Journal of Farm Economics* 12, 147-162.
- Mvumi C, Ndoro O, Manyiwo SA. 2017. Conservation agriculture, conservation farming and conventional tillage adoption, efficiency and economic benefits in semi-arid Zimbabwe. *African Journal of Agricultural Research* 12(19), 1629-1638. DOI: [org/10.5897/AJAR2017.12153](https://doi.org/10.5897/AJAR2017.12153)
- Pittelkow CM, Liang X, Linquist BA, Van Groenigen KJ, Lee J, Lundy ME, van Gestel N, Six J, Venterea RT, van Kessel C. 2015. Productivity limits and potentials of the principles of conservation agriculture. *Nature* 517, 365-368. DOI: [org/10.1038/nature13809](https://doi.org/10.1038/nature13809)
- Qi YB, Huang B, Darilek JL. 2011. Impacts of agricultural land management on soil quality after 24 years: a case study in Zhangjiagang County, China. *New Zealand Journal of Agricultural Research* 54(4), 261-273. DOI: [org/10.1080/00288233.2011.604678](https://doi.org/10.1080/00288233.2011.604678)
- Qin SP, He XH, Hu CS, Zhang YM, Dong WX. 2010: Responses of soil chemical and microbial indicators to conservational tillage versus traditional tillage in the North China Plain. *European Journal of Soil Biology* 46, 243-247. DOI: [org/10.1016/j.ejsobi.2010.04.006](https://doi.org/10.1016/j.ejsobi.2010.04.006)
- Sayre KD, Hobbs P. 2004. The raised-bed system of cultivation for irrigated production conditions. In: Lal R, Hobbs PR, Norman U, Hansen DO Eds. *Sustainable agriculture and the intonational rice-wheat system*, CRC Press, p. 337-355. DOI: [org/10.1201/9780203026472.ch20](https://doi.org/10.1201/9780203026472.ch20)
- Sharma P, Abrol V, Sharma RK. 2011. Impact of tillage and mulch management on economics, energy requirement and crop performance in maize–wheat rotation in rainfed sub humid Inceptisols, India. *European Journal of Agronomy* 34, 46-51. DOI: [org/10.1016/j.eja.2010.10.003](https://doi.org/10.1016/j.eja.2010.10.003)

- Shrivastav N, Basnet KB, Amgain LP, Karki TB, Khatri N. 2015. Weed dynamics and productivity of spring maize under different tillage and weed management methods. *Azarian Journal of Agriculture* 2(5), 118-122.
- Singh A, Kumar R, Kang JS. 2014. Tillage system, crop residues and nitrogen to improve the productivity of direct seeded rice and transplanted rice. *Current Agriculture Research Journal* 2(1), 14-29. DOI: [org/10.12944/CARJ.2.1.03](https://doi.org/10.12944/CARJ.2.1.03)
- Thomas GA, Titmarsh GW, Freebairn DM, Radford BJ. 2007. No-tillage and conservation farming practices in grain growing areas of Queensland-a review of 40 years of development. *Australian Journal of Experimental Agriculture*, 47 887-898. DOI: [org/10.1071/EA06204](https://doi.org/10.1071/EA06204)
- Wiatrak PJ, Wright DL, Marois JJ. 2005. Evaluation of strip tillage on weed control, plant morphology, and yield of glyphosate-resistant cotton. *The Journal of Cotton Science* 9, 10-14.
- Zheng C, Jiang Y, Chen C, Sun Y, Feng J, Deng A, Song Z, Zhang W. 2014. The impacts of conservation agriculture on crop yield in China depend on specific practices, crops and cropping regions. *The Crop Journal* 2(5), 289-296. DOI: [org/10.1016/j.cj.2014.06.006](https://doi.org/10.1016/j.cj.2014.06.006)