

Supplementary Material

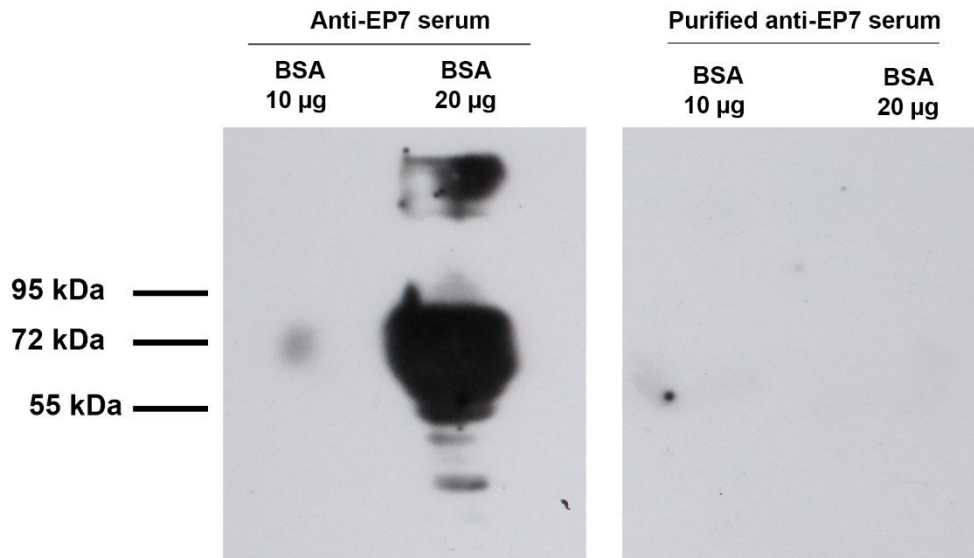


Figure S1: Western blot analysis of rabbit anti-EP7 depleted of antibodies anti-BSA in a Sepharose-BSA column. SDS-PAGE (10%) of BSA (10 and 20 µg) under reducing conditions, revealed by chemiluminescence using anti-EP7 peptide polyclonal rabbit sera before and after purification in Sepharose-BSA column.

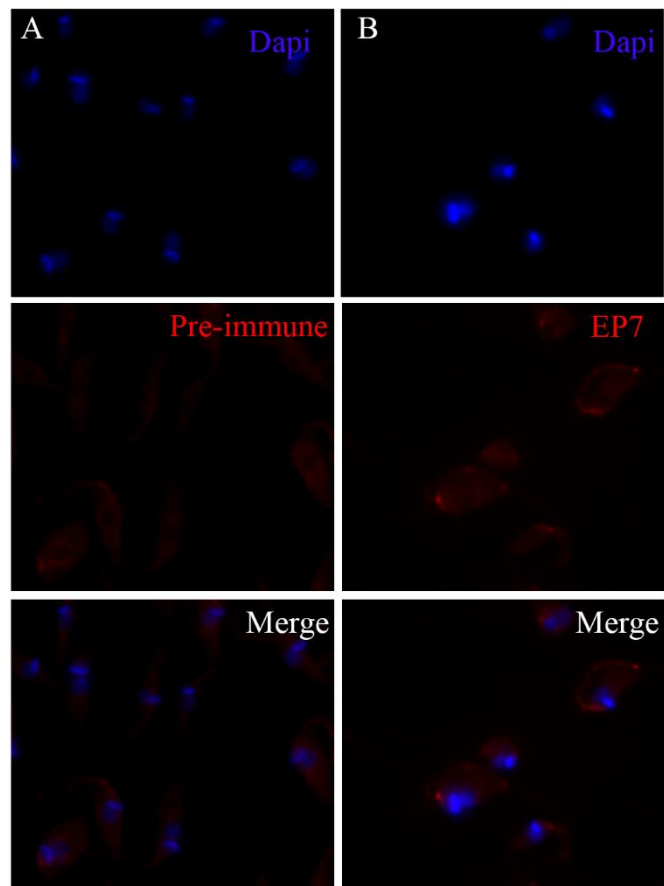


Figure S2: Immunofluorescence of *T. cruzi* epimastigotes, cultivated in BHI medium supplemented with 10% FBS, using rabbit anti-EP7 sera and pre-immune sera (A) Parasites were incubated overnight with pre-immune sera (red, Panel A), anti-EP7 (red, Panel B).

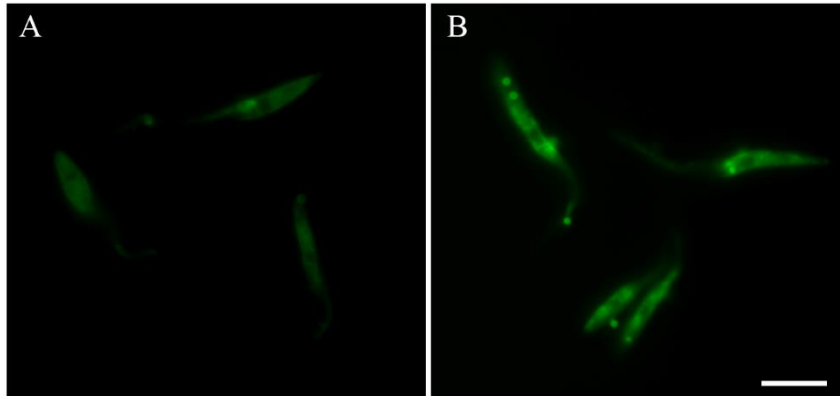


Figure S3: Autophagic vacuoles labeled with monodansylcadaverine (MDC) increase during epimastigotes serum deprivation. (A) Labeling of autophagic vacuoles in epimastigotes cultivated in BHI medium supplemented with 10% FBS under standard conditions. (B) Epimastigotes incubated in BHI medium without FBS for 24 hours, showing numerous of MDC-labeled vesicles. Bars=10 μ m.