

Article

Clays, Limestone and Biochar Affect the Bioavailability and Geochemical Fractions of Cadmium and Zinc from Zn-Smelter Polluted Soils

Altaf Hussain Lahori ^{1,2}, Monika Mierzwa-Hersztek ^{3,4}, Erdona Demiraj ⁵, Rachida Idir ⁶, Thi Tuyet Xuan Bui ⁷, Dinh Duy Vu ⁸, Amanullah Channa ⁹, Naeem Akhtar Samoon ² and Zengqiang Zhang ^{1,*}

¹ College of Natural Resources and Environment, Northwest A&F University, Yangling, Shannxi 712100, China; ahlahori@yahoo.com (A.H.L.); zhangzq58@126.com (Z.Q.Z)

² Department of Environmental Sciences, Sindh Madressatul Islam University, Karachi, 74000 Pakistan; naeemsamo@smiu.edu.pk (N.A.S)

³ Department of Agricultural and Environmental Chemistry, University of Agriculture in Krakow, al. Mickiewicza 21, 31-120, Krakow, Poland; monika6_mierzwa@wp.pl (M.M.H)

⁴ AGH University of Science and Technology, Faculty of Geology, Geophysics and Environmental Protection, Department of Mineralogy, Petrography and Geochemistry, al. Mickiewicza 30, 30-059, Krakow, Poland.

⁵ Department of Agro-Environment and Ecology, Faculty of Agriculture and Environment, Agriculture University of Tirana, 1029 Albania; edemiraj@ubt.edu.al (E.D)

⁶ Cerema, Project-team DIM 120, Rue de Paris - BP 216 - Sourdun - 77487 Provins CEDEX; rachida.idir@cerema.fr (R.I)

⁷ Institute of Ecology and Biological Resource, Vietnam Academy of Science and Technology (VAST), No. 18 Hoang Quoc Viet, Cau Giay, Hanoi, 100000 Vietnam; tuyetxuansttv@gmail.com (T.T.B.B)

⁸ Vietnam - Russia Tropical Centre, 63 Nguyen Van Huyen, Nghia Do, Cau Giay, Hanoi, 100000 Vietnam; duy dinhvu87@gmail.com (D.D.V)

⁹ Department of Economics Federal Urdu University (Abdul Haq Campus) 75300, Karachi; channampa@gmail.com (A.C)

* Correspondence: zhangzq58@126.com (Z. Q. Zhang); Tel.: +86 13609254113

Abstract: Ca-bentonite (CB) alone and in a mixture with limestone (L), tobacco biochar (TB) and zeolite (Z) on the fixation, geochemical fractions and absorption of Cd and Zn by Chinese cabbage in smelter heavily polluted (S-HP) and smelter low polluted (S-LP) soils were investigated. The results showed that the CB+TB and CB+L+TB treatments significantly immobilized Cd up to 22.03% and 29.68%, respectively, and reduced uptake by Chinese cabbage shoot to 35.98% with CB+Z+L and 61.35% with CB+L in S-HP and S-LP soils compared with the control. The CB+ Z+ L+TB treatment mobilized Cd up to 4.45% and increased absorption in the shoot by 9.85% in S-HP soil. The greatest immobilization of Zn was 53.18% and 58.20% with the CB+Z+L+TB treatment, which reduced Zn uptake in the plant shoot by 9.94% with CB + L and 58.04 with CB+Z+L+TB in S-HP and S-LP soils. The CB+Z+TB and CB+TB treatments mobilized Zn up to 35.40% and 4.80%, respectively, in both soils. Furthermore, the uptake of Zn in plant shoot was observed by 58.96% and 7.82% with application of CB+Z and CB+TB treatments, respectively, in S-HP and S-LP soils. Overall, our results suggest that Ca-bentonite alone and in mixtures with different amendments can be used to reduce the phyto-extraction of Cd and Zn in Zn-smelter polluted soils.

Keywords: clay minerals; limestone; biochar; trace elements; bio-availability; alkaline degraded soils

1. Introduction

Global industrialization and anthropogenic activities, such as smelting, mining ores, modern agriculture practices and waste disposal methods, have rapidly contaminated soils with trace elements TE(s) [1]. TE(s) are important inorganic pollutants in soils because they are toxic for non-contaminated food [2]). Cadmium (Cd) is recognized one of the extremely movable and possibly bio-available soil toxic substances, and its prospective role in plant metabolism and physiology has not been reported. Therefore, plant root can easily absorb TE(s) and then translocate TE(s) to the plant biomass; however, this mechanism depends on Cd soil accessibility and plant genotypes [3]. In addition, zinc (Zn) is considered a pivotal micronutrient for plant growth and development especially in paddy Zn-deficient soils, but its toxicity may have a negative impact on living organisms [4]. The poisonous nature of TE(s) is contingent on numerous soil physicochemical conditions, viz., pH, temperature, ion solubility, TE forms and concentration [5].

Although the cleanup of TE(s) soils is very necessary, the implementation of most conventional reclamation approaches, viz., encapsulation, land filling, electrokinetics, surface capping, vitrification, and soil washing/flushing, are economically nonfeasible on a large scale since these methods are environmentally disturbing and too expensive [6]. Amongst these technologies, in-door fixation of TE(s) is thought to be the best opportunity and a robust technology for restoration of in-organic polluted sites [7]. The principal mechanism of TE(s) fixation in soil depends on (ad)sorption, pH, CEC, electrostatic attraction, temperature, redox-potential and precipitation [8]. It is vitally important to bring TE(s) infertile polluted soils under cultivation using feasible and cheap amendments. Nonetheless, effective poor-cost practices are greatly needed to resolve this global problem [9]. The in-situ fixation of TE(s) by organic or synthetic additives, e.g., clay additives [10, [11], phosphate compounds [12], bio-solids [13], and alkaline material [14], is a promising option for cleanup of inorganic pollutants in contaminated sites because this method is cheap, feasible and environmentally friendly [15]. Subsequently, Chaves and Tito [16] stated that reactions of TE(s) with clay additives are very imperative for influential metal compounds in the surroundings. Moreover, Yi [17] reviewed that clay additives have great potential to enhance soil pH, which may account for reduced chemical-extractable fractions and the bioavailability of metal-polluted soil and restrict their accumulation in plants.

In recent years, a significant number of studies have been applied using single agents or mixed/combined agents for reclamation of TE(s) from artificial or historical contaminated soils. Indeed, several researchers concluded that alkaline amendment could be successfully used for restoration of acidic soils by increasing the soil pH [18, 19]. Limited research work has been done to investigate the additive efficiency of mixtures of agents on the phytoextraction of TE(s) in soils with elevated pH rather than acidic contaminated soil. To date, limited information is available on the efficacy of CB alone and mixed with limestone (L), zeolite (Z) and tobacco biochar (TB) on immobilization, geo-genic fractionation and uptake of Cd and Zn in alkaline Zn-smelter polluted soils. Therefore, it is hypothesized that the mixture of different amendments might be highly effective for the restoration of degraded alkaline soils. In our recent published work, we focused on Ca-bentonite alone and combined with zeolite, Ca-hydroxide, and tobacco biochar on the phytoavailability of Cu and Pb in gold mine-contaminated soil [20]. Hence, the aims of current study were as follows: 1) to explore the efficacy of CB alone and in mixture with (L, TB and Z) for bio-availability, speciation, plant growth and absorption of Cd and Zn by Chinese cabbage, 2) to elucidate their potential to remediate heavily and low polluted top soils for agricultural purposes, and 3) to probe the response of studied additives on soil health.

2. Materials and Methods

2.1. Contaminated soils

Smelter heavily polluted (S-HP) and smelter low polluted (S-LP) soils were sourced from Feng county of Shaanxi Province, China. In fact, this area was extremely polluted with Cd and Zn because

of the Zn-smelting plant. Therefore, to address this problem, S-HP soil was taken from (33° 56' 45"N, 106° 31' 45" E) nearby the Zn smelter, and S-LP soil was collected (33° 57' 42" N, 106° 31' 46" E) approximately 1.6 km far from Zn-smelter. The surface soil samples 0- to 20-cm deep were taken by using a shovel and then placed into polyethylene bags for pot experiments and basic soil property analyses followed by Shen [21]. The collected soils were manually crushed and sieved using a 2-mm mesh, and their initial physical and chemical parameters were assessed following standard Chinese methods [22]. According to Environmental Quality Standards for Soils, China (GB15618-1995, Grade II), the highest acceptable levels for Cd and Zn were 0.6 and 300 mg kg⁻¹, respectively, in soils with pH \geq 7.5. The key soil parameters were as follows: texture, sandy loam USDA [23]; pH, 8.50; EC, 220 μ S/cm; OM, 1.2 mg kg⁻¹; CEC, 34.73 cmol kg⁻¹; DOC, 20.8 mg kg⁻¹; and total Cd and Zn, 19.16 and 519.2 mg kg⁻¹ for S-HP, respectively. S-LP soil was also sandy loam in texture with the following features: pH, 8.70; EC, 210 μ S/cm; OM 5.1 mg kg⁻¹; CEC 36.78 cmol kg⁻¹; DOC 26.1 mg kg⁻¹; and total Cd and Zn, 10.36 and 234.3 mg kg⁻¹, respectively. Furthermore, the detailed of physicochemical parameters of the soils are indicated in our earlier study Lahori [11].

2.1.1. Immobilizing agents

Four common immobilizing additives were selected in this investigation: (a) Ca-bentonite (CB), (b) limestone (L), (c) tobacco biochar (TB) 500 °C, and (d) zeolite (Z). All studied amendments were purchased from different local traders of Yangling City, Shaanxi Province, China. The EC and pH were detected in a 1:10 H₂O ratio (w/v) for tobacco biochar and 1:5 H₂O ratio (w/v) for inorganic amendments using the USEPA9045D [24] Method and ASTM D1125 [25], respectively. The total TE(s) content in amendments were examined using the 3050B method USEPA [26]) and assessed by AAS (Z-2000, Japan). The basic chemical properties of the additives are presented in our earlier published study Lahori [11].

2.2. Experimental design

A pot study was performed at Northwest A&F University (NWAUFU), Yangling (34°15'60" N, 108°3'46" E), Shaanxi province of China. Thus, all immobilizing agents were sieved <2 mm prior to application at (1% weight/weight). In this trial, Ca-bentonite (CB) alone and mixed with limestone (L), tobacco biochar (TB) and zeolite (Z) were used in 9 treatments: (T1) Soil (Control); T2 Ca-Bentonite (CB 1%); T3 Ca-Bentonite + Limestone (CB 1% + L 1%); T4 Ca-Bentonite + Tobacco biochar (CB 1% + TB 1%); T5 Ca-Bentonite + Zeolite (CB 1% + Z 1%); T6 Ca-Bentonite + Limestone + Tobacco biochar (CB 1% + L 1% + TB 1%); T7 Ca-Bentonite + Zeolite + Tobacco biochar (CB 1% + Z 1% + TB 1%); T8 Ca-Bentonite + Zeolite + Limestone (CB 1% + Z 1% + L 1%); and T9 Ca-Bentonite + Zeolite + Limestone + Tobacco biochar (CB 1% + Z 1% + L 1% + TB 1%). The selected treatments and their doses were planned on the basis of earlier studies [27, 28, 18]. All additives were incorporated to 3.0 kg of soil in each plastic pot with a height of 16 cm and width of 23 cm; each treatment was replicated thrice in a complete randomized block with the exception of control pots. This design represented 54 pots in total (2 soils \times 9 treatments \times 3 replications \times 1 crop). The soil and each immobilizing agent were assorted systematically and used in plastic pots. Approximately, 1 L distilled water was added in experimental pots to maintain a field capacity of ~65%. Experimental pots were incubated 40 days for chemical reaction under normal greenhouse conditions. After completion, the cultivation Chinese cabbage (*Brassica campestris* L.) hybrid F1 was chosen as a test plant in this investigation. Furthermore, pure seed was purchased from a local market of Yangling, Shaanxi China. Seed was soaked in de-ionized water for 6 hours. Then, 10.0 vigorous seeds after soaking were grown in each pot, and five plants were selected after two weeks. At the time of seed germination, 80% soil moisture was maintained, and the lost water was regularly adjusted every week for Chinese cabbage. The entire Chinese cabbage plants from both soils were carefully removed from all pots after six weeks of planting.

2.3. Sample analyses

2.3.1. Soil sample analysis

The electrical conductivity of soil (EC) and pH levels were assessed at a ratio of (1:5 H₂O) using a mechanical pH and EC meter. Thus, OM was measured using the Walkley-Black titration method ISO 14235 [29]. Soil texture was assessed with a Master sizer 2000E (Malvern, UK) laser diffractometer [30]. The DOC was detected in ultrapure water in a 1:10 soil-water ratio using a dry combustion protocol in an automated TOC analyzer (Shimadzu TOC-L). The CEC was detected following the USEPA Method 9080 [31]. The TE fractionations, such as F1=exchangeable, F2=Fe, Mg oxide bounded, F3=organic matter bonded, and F4=residual from contaminated soils, were detected using the BCR-sequential extraction method as previously described [32]. Total (pseudo) TE(s) concentration in soils were detected followed by AAS (Z-2000, Japan) using ICP-OES.

2.3.2. Extraction of TE(s) using DTPA/TEA

The solubility of TE(s) in soils was assessed in DTPA (diethylenetriaminepentaacetic acid extraction) using a modified method ISO 14870 [33]. The solution was analyzed for cadmium and zinc using a Polarized Zeeman Atomic Adsorption spectrometer (Z-5000).

2.3.3. Plant analysis

Chinese cabbage crop was up rooted after six weeks of being sown, and shoot and root biomass was separated from both soils, washed thoroughly with distilled water to avoid any contamination. Then, plant biomasses were carefully oven dried at 65 °C to a constant weight. The dried samples were ground with a stainless-steel grinder chamber and stored in polyethylene bags for analyses. Approximately, 0.20 g of shoots and roots were weighted and digested using nitric acid (HNO₃-) and perchloric acid (HClO₄-). Total Cd and Zn contents in plant samples were tested using an Inductively Coupled Plasma mass spectrometer (ICP-MS) (ELAN DRC-e, Perkin Elmer SCIEX).

2.3.4. Chlorophyll assessment

The chlorophyll content in plant leaves was detected before Chinese cabbage harvesting using SPAD-502, Osaka 590- 8551, Japan (Soil Plant Analysis Development) [34]. Furthermore, aerial surface biomass of five plants chosen from each pot was assessed, and the total average is reported in this investigation.

2.4. Quality control and statistical analysis

All examinations were performed in triplicates. Reagent blanks were used for accurate assessment of the analytical values. Soil GBW07457 (GSS-28) and plant GBW07603 (GSV-2 Chinese cabbage) certified reference materials from Chinese Academy of Geological Sciences) were used for quality control. The recovery ratios of cadmium and zinc in soil ranged from 93-103% and 92-102%, respectively, and those in plants ranged from 94-104% and 96-106%, respectively. One-way analysis of variance (ANNOVA) and least significant difference (LSD) test were employed to identify significant differences between individual treatments (p<0.05) using SPSS version 22.0. All graphs were completed using Origin 17.0 software. Redundancy analysis (RDA) between DTPA-extractable Cd and Zn, uptake in root and shoot biomass, plant dry biomass, chlorophyll content, and soil chemical index were also performed using CANACO 5.

3. Results and Discussion

3.1. Plant growth

The maximum shoot and root biomass of Chinese cabbage from (S-HP) soil was significantly increased by 19.84 and 5.86% with CB + TB (T4), whereas the CB+L+TB (T6) and CB+L (T3) treatments reduced the shoot and root biomass of Chinese cabbage by 70.01 and 58.06% compared with control (Fig. 1a). Regarding (S-LP) soil, the greatest shoot and root biomass of Chinese cabbage was observed at 27.27 and 23.08%, respectively, with CB+TB (T4), while the CB + L (T3) treatment significantly reduced these levels by 60.55% and 60.0%, respectively, compared to control (Fig. 1b). Our findings clearly showed that changes in plant dry weight might result from variations in soil pH and low mobility of nitrogen (N) due to the introduction of alkaline additives. An earlier study Cheng and Hseu [35] reported that zeolite and bentonite as soil additives did not support cabbage growth due to the elevated soil pH. In addition, Yi [36] observed an increase in *Brassica juncea* dry biomass with increasing dosages of bentonite and zeolite compared with control.

3.1.1. Chlorophyll content

The chlorophyll amount in the Chinese cabbage shoot from S-HP soil was significantly increased from 35.0 to 39.5 (approximately 11.39%) with CB+Z (T5), but the CB+Z+L (T8) treatment significantly reduced the amount of chlorophyll from 35.0 to 33.3 (4.85%) compared with control (Fig. 1c). The chlorophyll content in the Chinese cabbage shoot from S-LP soil was significantly increased from 37.7 to 42.47 (11.22%) with CB (T2), while the greatest reduction of chlorophyll content in plant shoot was observed from 37.7 to 32.9 (12.73%) with CB+Z+TB (T7) compared with control (Fig. 1c). It is assumed that the changes in chlorophyll content might be due to variations in the soil chemical index after the addition of alkaline amendments. Our findings agreed with previous studies [37,34,38].

3.1.2. Soil organic matter

The organic matter (OM) concentration in S-HP increased from 0.14 to 0.26% with CB+Z+ TB (T7), whereas CB+Z (T5) reduced it from 0.14 to 0.07% compared with the unamended treatment (Fig. 1d). Compared with the control, the CB+L+TB (T6) treatment was highly effective for increasing OM from 0.58 to 0.84%, but CB (T2) significantly reduced the OM percentage from 0.58 to 0.13% in S-LP soil (Fig. 1d). Our results clearly indicated that original smelter contaminated soils were poor in OM, while the CB+Z+TB and CB+L+TB treatments were highly effective in increasing the OM concentration with the addition of TB in mixed treatments. Abdelhafez [39] revealed an increase in OM in smelter polluted soil after the introduction of sugar cane bagasse and orange peel-derived BCs. Zhang [40] used rice straw-derived BC as an amendment that evidently increased OM from metal-contaminated soil. Additionally, Shuman [41] stated that the soil organic matter (SOM) demonstrated the potential to improve TE(s) toxicity to plants by re-distributing elements to less toxic conditions. Upon the normal application of OM into the soil, most nutrients were fixed [42,43]. Conversely, as the OM decays, the adsorbed TE(s) are solubilized [44].

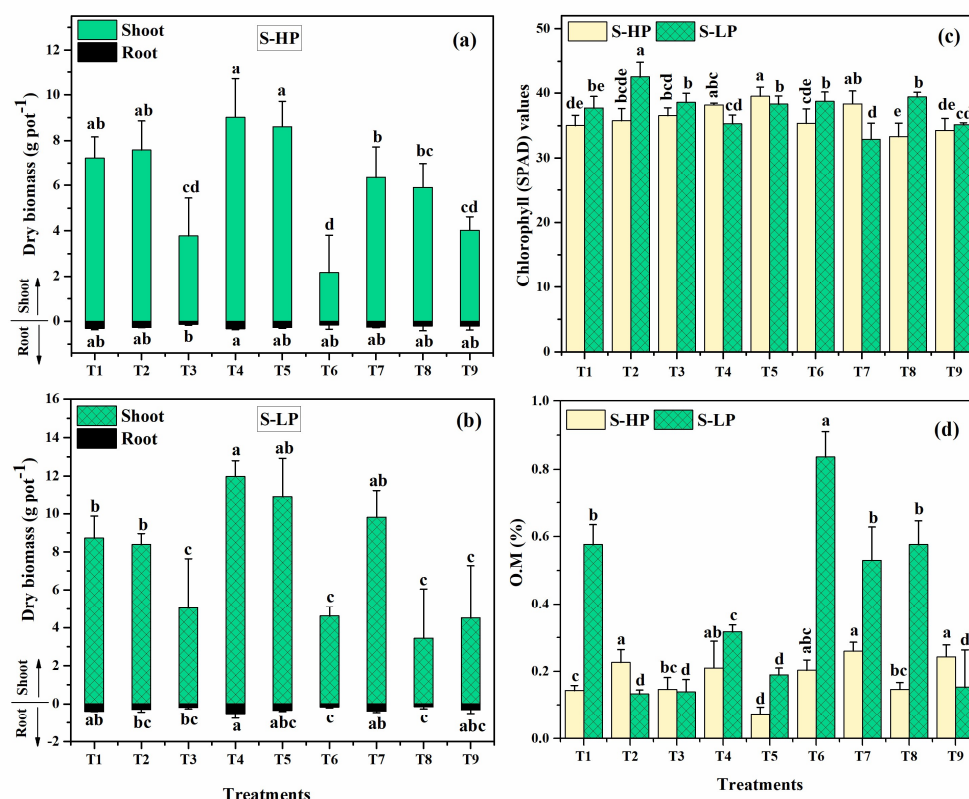


Figure 1. Impact of soil additives on (shoot and root) dry biomass yield of Chinese cabbage grown in Fengxian heavily contaminated (S-HP) soil (a), Fengxian low contaminated (S-LP) soil (b). Chlorophyll SPAD values (c), and organic matter (d). Values in a given column followed by the same letter are not significantly different ($p < 0.05$) using TukeyLSD test.

3.1.3. Soil electrical conductivity

Compared with control, the EC level in S-HP soil was nonsignificantly increased from 0.30 to 0.40 dSm⁻¹ in CB+Z+TB (T7), while CB+Z+L (T8) reduced the EC level from 0.30 to 0.17 dSm⁻¹ (Fig. 2a). The EC level in S-LP soil significantly increased from 0.38 to 0.40 dSm⁻¹ with CB+TB (T4), while the maximum reduction of EC was observed from 0.38 to 0.17 dSm⁻¹ in CB+L (T3) compared with control (Fig. 2a). Mohamed [18] demonstrate that bamboo BC as an amendment can increase soil EC levels compared with control soil. Consequently, Meng [45] revealed that the co-pyrolysis of rice straw with swine manure-derived BCs at 400 °C evidently increased the EC level in Pb-Zn mining polluted soil.

3.1.4. Soil pH

The pH values in S-HP soil significantly increased from 8.47 to 9.10 with CB+Z+L (T8), whereas CB (T2) reduced the pH values from 8.47 to 8.43 compared with unamended soil (Fig. 2b). The potential role of amendments to S-LP soil significantly increased the pH level from 8.54 to 8.94 with CB+Z+L+TB (T9) compared with nonamended soil (Fig. 2b). Overall, it is confirmed that the increasing soil pH might be due co-application of alkaline amendments. Li [46] reported an increase in soil pH with the addition of zeolite. Likewise, Wu [47] reported that increased soil pH and OH⁻ levels might possibly increase the precipitation of carbonates or hydroxides. Moreover, Boostani [48] reported that the addition natural zeolite and biochars in contaminated soil strongly enhanced soil pH.

3.1.5. Soil cation exchange capacity

The maximum CEC concentration in S-HP soil was significantly increased to 81.61% with CB+Z+ L+TB (T9) rather than the control treatment (Fig. 2c). The maximum CEC content in S-LP soil was observed at 64.72% with CB+Z+L with (T8) compared with control (Fig. 2c). In a previous study, Li[46] reported that natural zeolite as an amendment drastically increased the soil CEC. Mohamed [18] stated that an increase in soil CEC was observed with the addition of bamboo biochar.

3.1.6. Soil dissolved organic carbon

The DOC proportion in S-HP soil was significantly increased 50.34% with CB+Z (T5), but CB+TB (T4) reduced the DOC proportion up to 22.68% compared to the nonamended treatment (Fig. 2d). The highest increasing amount of DOC in S-LP soil was 61.01% with CB+L (T3), while DOC was reduced by 38.52% with CB (T2) compared with control (Fig. 2d). In an earlier study, Liu [49] revealed enhanced DOC in soil upon the application of mixed crop straw-derived BC. Gao [50] found changes in DOC content in artificial loess, and red Cd-contaminated soils were identified after the addition of wheat straw as an amendment.

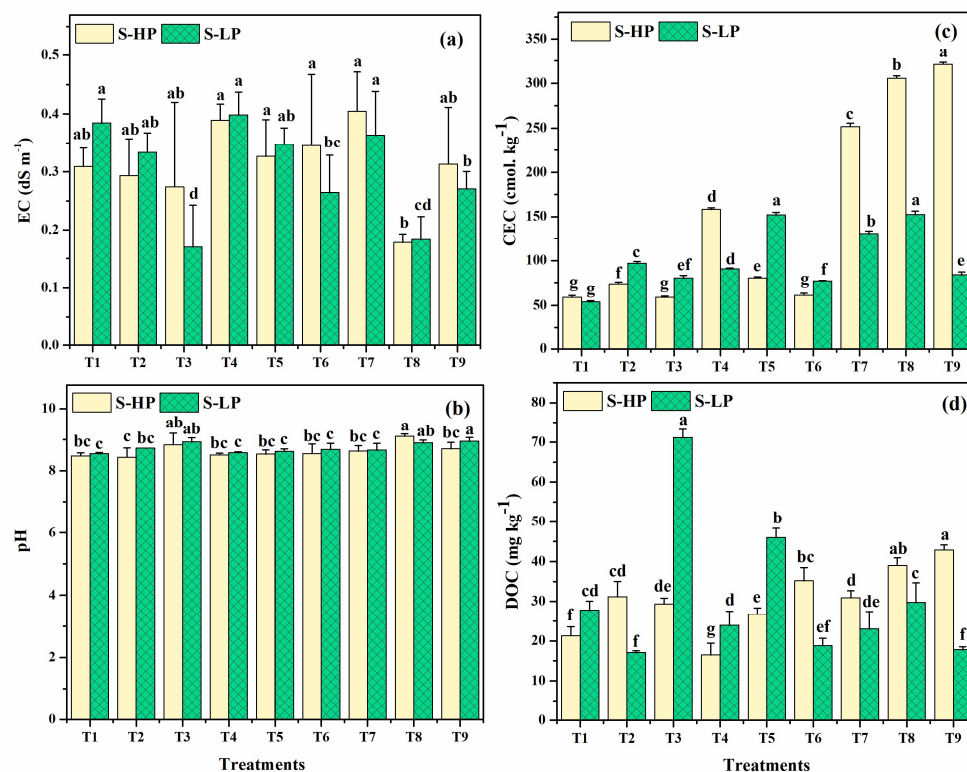


Figure 2. Impact of additives on soil EC after Chinese cabbage into (S-HP), and (S-LP) soils (a), pH (b), cation exchange capacity (CEC) (c), and dissolved organic carbon (DOC), (d). Values in a given column followed by the same letter are not significantly different ($p < 0.05$) using TukeyLSD test.

3.1.7. Soil DTPA-extracted Cd and Zn

The maximum Cd concentration in S-HP soil was significantly reduced by 22.03% with CB+ TB (T4), while CB+L+TB (T6) increased the Cd content up to 4.45% compared with nonamended soil (Fig. 3a). Cd mobility in S-LP soil was nonsignificantly reduced by 29.68% with CB+L+TB (T6) than control soil (Fig. 3a). Usman [51] found a stronger reduction of Cd in soil with the use of

Na-bentonite and Ca-bentonite. Recently, Hamid [1] stated the Cd concentration in contaminated soil was potentially reduced with application of biochar and manure integrated with inorganic amendments. Thus, Zhou [52] revealed reduced bioavailability of Cd and Zn in the shoots of rice with the use of limestone co-amended with zeolite as well as hydroxyhistidine with zeolite due to rising soil pH and CEC. Guo [19] reported that hydrated lime considerably immobilized the Cd in contaminated soil.

Compared to the nonamended treatment, the greatest Zn mobility in S-HP soil was significantly reduced 53.18% with CB+Z+L+TB (T9), whereas CB+Z+TB (T8) enhanced Zn mobility up to 35.40% (Fig. 3b). The maximum reduction of Zn in S-LP soil obtained with CB+Z+L+TB (T9) was 58.20%, but CB+TB (T4) increased Zn mobility up to 4.80% compared with control (Fig. 3b). Our findings clearly highlighted that (im)mobilization of Cd and Zn in soils might be due to variation in soil pH, OM and DOC. Similarly, Li [53] confirmed that the phytoavailability of TE(s) is affected by soil chemical properties, such as EC, pH, OM and CEC. Furthermore, Cui [54] reported that apatite, lime, and charcoal as soil additives significantly immobilized Zn due to increased soil pH under long-term field conditions. Similarly, Khan and Jones [55] observed immobilization of Zn in mine-tailing sites with the addition of lime. Additionally, Zhang and Pu [56] stated that Zn and Cd were drastically fixed in urban contaminated soil with the addition of minerals. However, Abbaspour and Golchin [12] concluded that zeolite as an amendment had minimal impact on the availability and transformation of Cd and Zn in soil after a 6-month incubation period. Additionally, Almas[57] revealed that OM enhanced the mobility of Zn due to the development of organometallic groups.

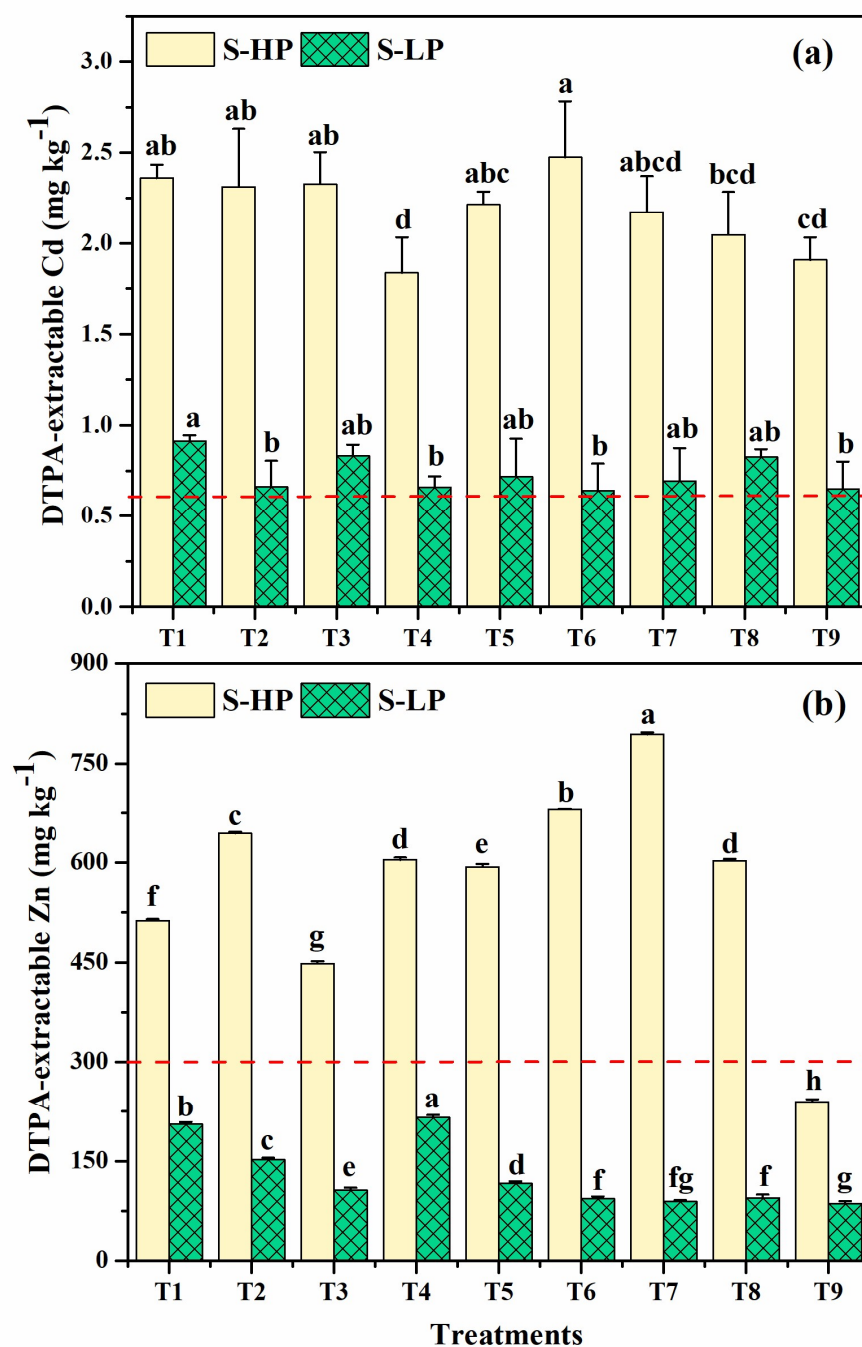


Figure 3. Impact of soil additives on the immobilization of DTPA-extractable Cd (a) and Zn (b) into (S-HP), and (S-LP), soils in treated samples. Values in a given column followed by the same letter are not significantly different ($p < 0.05$) using TukeyLSD test.

3.1.8. Geochemical forms of Cd and Zn

Studied amendments potentially reduced the distribution of exchangeable (F1) and Fe, Mn-oxide bonded (F2), rather than organic matter bonded (F3) and residual (F4) fractions of Cd in S-HP soil compared with control. The maximum decrease in the F1 fraction of Cd observed was

27.86% with CB+Z+L+TB (T9), while CB (T2) increased the F2 fraction of Cd up to 27.98% compared with control. Furthermore, CB (T2) reduced the F3 speciation of Cd by 25.19%, but CB+Z+L+TB (T9) potentially enhanced the Cd up to 16.67% over control. Similarly, an extreme reduction of Cd in F4 speciation (36.06%) was noted for CB+L (T3), whereas CB+L+TB (T6) maximally increased Cd by 9.34% compared to control (Fig. 4a). The addition of amendments appeared to alter to the distribution of Cd in S-LP soil. Nonetheless, the greatest reductions of Cd in F1 and F2 fractions were 26.66 and 25.51% for CB + TB (T4) and CB+Z (T5), respectively, but CB+Z+TB (T7) and CB (T2) increased Cd levels to 10.85 and 14.29% compared with control. The greatest reduction in the F3 form of Cd was 8.58% with CB+Z+L+TB (T9), whereas CB+L+TB (T6) increased the Cd proportion by 11.90% compared with control. Similarly, the response of CB+TB (T4) evidently reduced the F4 fraction of Cd to a greater extent of approximately 33.33%, while CB (T2) enhanced the Cd proportion to 3.15% compared to control (Fig. 4b). Regarding alkali soils, Zhao [58] found a decline in the Cd exchangeable form with the incorporation of BC at 5, 10 and 15% application rates. Moreover, Bashir [59] applied biochar and zeolite as soil amendments and found that the exchangeable form of Cd in soil was considerably reduced by 28-29.4 and 9-13%, respectively, due to increased soil pH.

The F1 form of Zn in S-HP soil was reduced by 3.58% with CB+Z+L+TB (T9), but CB (T2) increased it by 0.08% compared with nonamended soil. Compared with control, all study additives significantly enhanced the F2 form of Zn, but the maximum increase in the F2 form of Zn observed was 28.55% with CB+L+TB (T6). The maximum reduction of the F3 form of Zn was 41.81% with CB+L (T3), whereas CB (T2) increased the Zn up to 49.07% compared with control. Similarly, the greatest reduction in the F4 fraction of Zn was 42.54% with CB+L (T3), but the maximum increasing concentration of Zn observed was 29.0% with CB + TB (T4) compared with nonamended soil (Fig. 4c). In S-LP soil, CB+TB (T4) was highly effective at reducing the F1 form of Zn by 38.02%, whereas CB + Z + TB (T7) potentially enhanced this form by 3.15% compared with the control treatment. The maximum reduction of the F2 form of Zn was 58.24% with CB+TB (T4), but CB+Z+L (T8) increased the Zn concentration up to 12.81% compared with control. The greatest reduction in the F3 form of Zn detected was 48.40% with CB+Z+L+TB (T9), but the highest increase in Zn concentration noted was 10.34% with CB + Z(T5) compared with control. Indeed, the F4 fraction of Zn was reduced by 10.79% with CB (T2), whereas CB + Z (T5) enhanced the Zn content up to 12.94% compared with control (Fig. 4d). Castaldi [60] revealed that zeolite as an amendment significantly improved the residual form of Zn compared with control. Ahmad [61] reported that TE(s) in exchangeable and reducible speciation were changed to extra steady forms using date palm leaf waste-derived BC and P-loaded BC as soil amendments. Moreover, Bogusz and Oleszczuk [62] applied sewage sludge and its generated BC as soil additives and observed that BC stimulates the alteration of accessible forms of Zn into their residual fractions over time, which may further have reduced the ecological risk associated with their existence in the atmosphere.

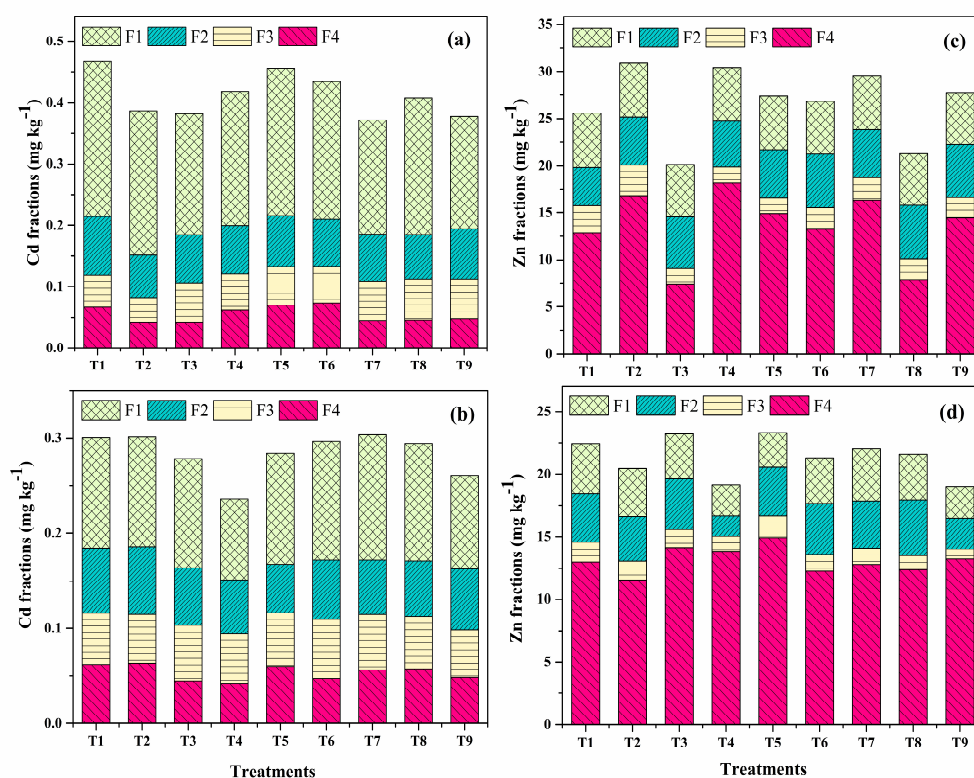


Figure 4. Impact of additives on distribution of TE(s) fractions such as F1=exchangeable, F2=Fe, Mg oxide bounded, F3=organic matter bonded and F4=residual of Cd in S-HP (a) and S-LP soils (b); Zn in S-HP (c) and S-LP soils (d).

3.1.9. Cd uptake in shoots and roots

The maximum Cd uptake in the shoot of Chinese cabbage was significantly reduced by 35.98% with CB + Z + L (T8), but CB+L+TB (T6) increased the Cd uptake in shoots by 9.85% from S-HP soil compared with the control treatment (Fig. 5a). Indeed, all the studied treatments drastically reduced Cd accumulation by Chinese cabbage shoot from S-LP soil compared with control. The maximum reduction of Cd in the shoot of Chinese cabbage observed was 61.35% with CB+L (T3) compared with control (Fig. 5a). The Cd buildup in the root of Chinese cabbage from S-HP soil was significantly reduced by 41.75% with CB+Z+L+TB (T9), whereas CB+L+TB (T6) increased Cd accumulation in the root of Chinese cabbage up to 1.26% compared with the control treatment (Fig. 5b). In case of S-LP soil, the maximum Cd reduction in the root of Chinese cabbage observed was 54.84% with CB + Z + L (T8) compared with control (Fig. 5b). Consequently, Sun [63] reported that bentonite as soil an additive reduced the amount of Cd in roots and shoots of (*Oryza sativa* L.). Zhang [40] revealed that rice straw-derived BC drastically reduced Cd concentration in shoots by lettuce, which was grown in lightly HMs polluted soils. However, this treatment was not effective for immobilization and reduced the absorption by plants in heavily metal-polluted soil. More recently, Bashir [64] amended rice straw-derived BC and zeolite in acidic Cd-contaminated soil and found that Cd uptake by water spinach was significantly reduced after incorporation of amendments. However, Wen [65] assessed Cd absorption in the sorghum aerial surface with the addition of zeolite, CaCO_3 , and MnO_2 as amendments.

3.1.10. Zn uptake in shoot and root

Zn uptake in the shoot of Chinese cabbage from S-HP soil was significantly reduced by 9.24% with CB+L (T3), while the maximum uptake in the shoot of Chinese cabbage observed was 58.96% with CB+Z (T5) compared with control (Fig. 5c). The highest reducing Zn uptake in Chinese cabbage shoots from S-LP soil observed was 58.04% with CB+Z+L+TB (T9), whereas CB+TB (T4) resulted in increased Zn uptake in Chinese cabbage shoots by 7.82% compared with control (Fig. 5c). The Zn absorption in the root of Chinese cabbage from S-HP soil was potentially reduced to 29.85% with CB+Z+L+TB (T9), but CB+L+TB (T6) resulted in increased Zn absorption in Chinese cabbage roots by 52.75% compared with the control treatment (Fig. 5d). The highest reduction of Zn in Chinese cabbage roots observed was 50.01% with CB+ Z+L+TB (T9) from S-LP soil, while CB+TB (T4) resulted in 23.021% increased Zn absorption in Chinese cabbage roots compared with control (Fig. 5d). Kumararaja [66] reported that bentonite as a soil additive reduced Zn stress in soil and uptake by amaranth. However, Wang [38] observed Zn solubility in soil and accumulation by pakchoi and Chinese cabbage after use of Ca-bentonite-pig manure co-compost.

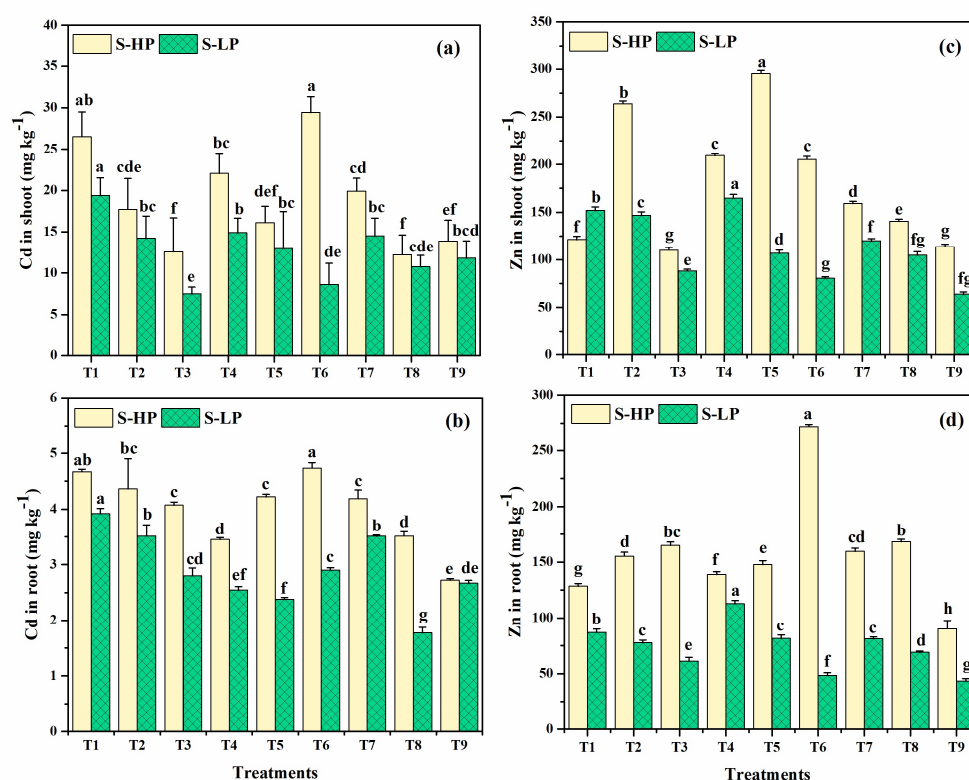


Figure 5. Impact of additives on the total concentration of Cd in Chinese cabbage plant shoot (a) and root (b) and Zn in Chinese cabbage plant shoot (c), and root (d) which was grown (S-HP), and (S-LP) soils. Values in a given column followed by the same letter are not significantly different ($p < 0.05$) using Tukey LSD test.

3.2. Redundancy analysis

Redundancy analysis was performed to explore the association between DTPA-Cd and Zn in soil, plant absorption, dry biomass, chlorophyll content, EC, pH, CEC, DOC and OM in smelter heavily polluted (S-HP) and smelter low polluted (S-LP) soils (Fig. 6a). Soil EC, pH, CEC, DOC and OM were plotted on the first axis (explained 22.24% variation). However, DTPA-Cd and Zn, uptake

by plants, dry biomass and chlorophyll content were plotted on the second axis (explained 29.29% of the total difference). DTPA-extractable Cd stress was significantly correlated with Cd content in root and significantly negatively correlated with CEC. Thus, Cd content in root was negatively significantly correlated with CEC. Furthermore, shoot biomass was negatively significantly correlated with DOC in S-HP soil. Furthermore, Fig. 6b showed that soil EC, pH, CEC, DOC and OM appeared on the first axis (explained 11.10% variation). However, DTPA-Cd and Zn, uptake by plants, dry biomass and chlorophyll content appeared on the second axis (explained 47.64% of the total variation). DTPA-extractable Zn was positively associated with Cd in shoots and Zn in shoots and root biomass. Cd in was positively associated with Zn in shoots and EC but negatively associated with soil pH. Zn in plant shoots was positive correlated with Zn in root and soil EC, but negatively correlated with soil pH. Zn in roots was significantly associated with EC but negatively significantly associated with soil pH. Plant shoot biomass was highly significantly correlated with EC and negatively significantly correlated with pH in S-LP soil. The analysis above demonstrates that the alteration of soil chemical parameters had significant impacts on mobilization/immobilization of TE(s) in soil systems after integration of alkaline additives.

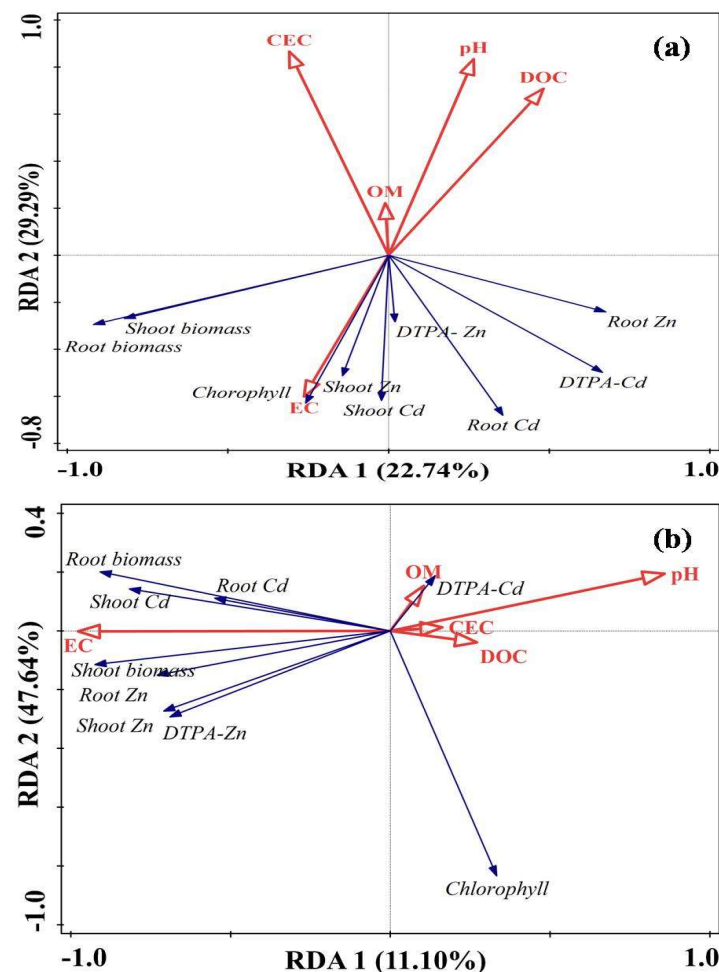


Figure 6. Redundancy analysis (RDA) between the DTPA-extractable Cd and Zn, uptake in plant shoot and root, dry biomass, chlorophyll content, soil EC, pH, CEC, DOC and OM from S-HP soil (a) and S-LP soil (b).

5. Conclusions

Overall, this study indicated that the studied amendments were highly effective for immobilization of DTPA-extractable Cd compared with Zn in S-HP and S-LP soils. Furthermore, similar behaviors of Cd and Zn were observed in Chinese cabbage shoot and root biomass given the mobility of these TM(s) from soil systems after the addition of amendments. Interestingly, the CB+TB treatment was highly effective in promoting plant dry weight. The co-application of immobilizing agents decreased the residual fraction of Cd and increased the exchangeable fraction. In contrast, the organic matter-bonded fraction of Zn was reduced and the residual fraction increased in S-HP and S-LP soil. In general, the alteration in soil chemical characteristics could be main reason to illustrate the (im)mobilization of TE(s) in treated soil samples. The collected results and findings are based on short-term pot experiments; therefore, further studies are required to verify the obtained results under field experiments with realistic and applicable rates and conditions.

Author Contributions: Conceptualization, A.H.L and Z.Q.Z.; methodology, A.H.L.; software, A.H.L and A.C.; validation, M.M.H. and R.I.; formal analysis, N.A.S; investigation, Z.Q.Z., resources, Z.Q.Z., data curation, A.H.L, T.T.B.B. and D.D.V.; writing—original draft preparation, A.H.L. and Z.Q.Z.; writing—review and editing, A.H.L. and E.D.; supervision, Z.Q.Z.; project administration, Z.Q.Z.; funding acquisition, Z.Q.Z. All authors have carefully read and agree to the published version of the manuscript.

Funding This research was financially supported by China fundamental Research Funds for the Central Universities (No. Z109021565), and Science and Technology Overall Innovation Project of Shaanxi Province in China (No. 2016KTCQ03-20) for special fund is gratefully acknowledged.

Conflicts of Interest: The authors declare no any conflict of interest exists in the submission of this manuscript, and manuscript is approved by all authors for publication.

References

1. Hamid, Y.; Tang, L.; Hussain, B.; Usman, M.; Hashmi, M.L.R.; Khan, M.B.; Yang, X.; He, Z.L. Immobilization and sorption of Cd and Pb in contaminated stagnic anthrosols as amended with biochar and manure combined with inorganic additives. *J. Environ. Manage.* **2020**, *257*, 109999.
2. de Souza, E.S.; Dias, Y.N.; da Costa, H.S.C.; Pinto, D.A.; de Oliveira, D.M.; de Souza Falcão, N.P.; Teixeira, R.A.; Fernandes, A.R. Organic residues and biochar to immobilize potentially toxic elements in soil from a gold mine in the Amazon. *Ecotox. Environ. Safe.* **2019**, *169*, 425-434.
3. Roberts, T.L. Cadmium and phosphorous fertilizers: the issues and the science. *Procedia. Eng.* **2014**, *83*, 52-59.
4. Lahori, A.H.; Gue, Z.Y.; Zhang, Z.Q.; Li, R.H.; Mahar, A.; Awasthi, M.K.; Shen, F.; Sial, T.A.; Kumbhar, F.; Wang, P.; Jiang, S.C. Use of biochar as amendment for soil heavy metals immobilization: Prospects and Challenges. *Pedosphere.* **2017b**, *27*, 991-1014.
5. Chipasa, K.B. Accumulation and fate of selected heavy metals in a biological wastewater treatment system. *Waste Manage.* **2003**, *23*, 135-143.
6. Kulikowska, D.; Gusiatin, Z.M.; Bulkowska, K.; Kierklo, K. Humic substances from sewage sludge compost as washing agent effectively remove Cu and Cd from soil. *Chemosphere.* **2015**, *136*, 42-49.
7. Guo, G.L.; Zhou, Q.X.; Ma, L.Q. Availability and assessment of fixing additives for the in situ remediation of heavy metal contaminated soils: a review. *Environ. Monit. Assess.* **2006**, *116*, 513-528.
8. Ahmad, M.; Rajapaksha, A.U.; Lim, J.E.; Zhang, M.; Bolan, N.; Mohan, D.; Vithanage, M.; Lee, S.; Ok, Y.S. Biochar as a sorbent for contaminant management in soil and water: A review. *Chemosphere.* **2014**, *99*, 19-33.
9. Chen, Y.S.; Xu, J.H.; Lv, Z.Y.; Xie, R.J.; Huang, L.M.; Jiang, J.P. Impacts of biochar and oyster shells waste on the immobilization of arsenic in highly contaminated soils. *J. Environ. Manage.* **2018**, *217*, 646-653.
10. Sun, Y.B.; Sun, G.H.; Xu, Y.M.; Wang, L.; Liang, X.F.; Lin, D.S.; Hu, F.Z. Assessment of natural sepiolite on cadmium stabilization, microbial communities and enzyme activities in an acidic soil. *Environ. Sci. Pollut. Res.* **2013**, *20*, 3290-3299.

11. Lahori, A.H.; Zhang, Z.Q.; Guo, Z.Y.; Mahar, A.; Li, R.H.; Awasthi, M.K.; Sial, T.A.; Kumbhar, F.; Wang, P.; Shen, F.; Zhao, J.C.; Huang, H. Potential use of lime combined with additives on (im)mobilization and phytoavailability of heavy metals from Pb/Zn smelter contaminated soils. *Ecotox. Environ. Safe.* **2017a**, *145*, 313- 323.
12. Abbaspour, A.; Golchin, A. Immobilization of heavy metals in a contaminated soil in Iran using di-ammonium phosphate, vermicompost and zeolite. *Environ. Earth Sci.* **2011**, *63*, 935- 943.
13. Tandy, S.; Healey, J.R.; Nason, M.A.; Williamson, J.C.; Jones, D.L. Heavy metal fractionation during the co-composting of biosolids, deinking paper fibre and green waste. *Bioresour. Technol.* **2009**, *100*, 4220-4226.
14. Bolan, N.S.; Adriano, D.C.; Mani, P.A.; Duraisamy, A. Immobilization and phytoavailability of cadmium in variable charge soils. II. Effect of lime addition. *Plant and Soil.* **2003**, *251*, 187-198.
15. Garau, G.; Castaldi, C.; Santona, L.; Deiana, P.; Melis, P. Influence of red mud, zeolite and lime on heavy metal immobilization, culturable heterotrophic microbial populations and enzyme activities in a contaminated soil. *Geoderma.* **2007**, *142*: 47-57.
16. Chaves, L.H.G.; Tito, G.A. Cadmium and copper adsorption on bentonite: Effects of pH and particle size. *Rev. Cienc. Agron.* **2011**, *42*, 278-284.
17. Yi, X.; Liang, X.F.; Xu, Y.M.; Qin, X.; Huang, Q.Q.; Wang, L.; Sun, Y.B. Remediation of Heavy Metal-Polluted Agricultural Soils Using Clay Minerals: A review. *Pedosphere.* **2017**, *27*, 193-204.
18. Mohamed, I.; Zhang, G.; Li, Z.G.; Liu, Y.; Chen, F.; Dai, K. Ecological restoration of an acidic Cd contaminated soil using bamboo biochar application. *Ecol. Eng.* **2015**, *84*, 67-76.
19. Guo, F.Y.; Ding, C.F.; Zhou, Z.G.; Huang, G.X.; Wang, X.X. Effects of combined amendments on crop yield and cadmium uptake in two cadmium contaminated soils under rice-wheat rotation. *Ecotox. Environ. Safe.* **2018**, *148*, 303-310
20. Lahori, A.H.; Zhang, Z.Q.; Shaheen, S.M.; Rinklebe, J.; Guo, Z.Y.; Li, R.H.; Mahar, A.; Wang, Z.; Ren, C.Y.; Mi, S.S.; Liu, T.; Jing, R. Mono-and co-applications of Ca-bentonite with zeolite, Ca-hydroxide, and tobacco biochar affect phytoavailability and uptake of copper and lead in a gold mine-polluted soil. *J Hazard Mater.* **2019**, *374*, 401-411.
21. Shen, F.; Liao, R.M.; Ali, A.; Mahar, A.; Guo, D.; Li, R.H.; Sun, X.; Awasthi, M.K.; Wang, Q.; Zhang, Z.Q. Spatial distribution and risk assessment of heavy metals in soil near a Pb/Zn smelter in Feng County, China. *Ecotox. Environ. Safe.* **2017**, *139*, 254- 262.
22. Ding, Z.H.; Wang, Q.Y.; Hu, X. Extraction of heavy metals from water-stable soil aggregates using EDTA. *Procedia. Environ. Sci.* **2013**, *18*, 679-685.
23. USDA. Keys to Soil Taxonomy. 12th Edition. Natural Resources Conservation Service, United States Department of Agriculture. Washington, D.C., USA. **2014**.
24. USEPA Method 9045D. Soil and Waste pH. **2004**.
25. ASTM 1125 Standard Test Methods for Electrical Conductivity and Resistivity of Water. **2014**.
26. USEPA. Test Methods for Evaluating Solid Waste. Laboratory Manual Physical/Chemical Methods, vol. 1A. US Govt. Print. Office, Washington, DC (SW-846). **1986**.
27. Park, J.H.; Choppala, G.K.; Bolan, N.S.; Chung, J.W.; Chudasavathi, T. Biochar reduces the bioavailability and phytotoxicity of heavy metals. *Plant Soil.* **2011**, *348*, 439-451.
28. Abdel-Kader, N.H.; Shahin, R.R.; Khater, H.A. Assessment of heavy metals immobilization in artificially contaminated soils using some local amendments. *O. J. Metal.* **2013**, *3*, 68-76.
29. ISO, 14235. Soil Quality- Determination of Organic Carbon by Sulfochromic Oxidation. International Organization for Standardization, Genève, Switzerland. **1998**.
30. Sochan, A.; Bieganski, A.; Ryzak, M.; Dobrowolski, R.; Bartmiński, P. Comparison of soil texture determined by two dispersion units of mastersizer 2000. *Int. Agrophys.* **2012**, *26*, 99-102.
31. USEPA. Method 9080. Cation-Exchange Capacity of Soils (Ammonium Acetate). **1986**.
32. Waterlot, C.; Bidar, G.; Pruvot, C.; Douay, F. Effects of grinding and shaking on Cd, Pb and Zn distribution in anthropogenically impacted soils. *Talanta.* **2012**, *98*, 185-196.
33. ISO, 14870. "Soil Quality- Extraction of Trace Elements by Buffered DTPA Solution," International Organization for Standardization. **2001**.
34. Mahar, A.; Wang, P.; Ali, A.; Guo, Z.Y.; Awasthi, M.K.; Lahori, A.H.; Wang, Q.; Shen, F.; Li, R.H.; Zhang, Z.Q. Impact of CaO, fly ash, sulfur and Na₂S on the (im)mobilization and phytoavailability of Cd, Cu and Pb in contaminated soil. *Ecotox. Environ. Safe.* **2016**, *134*, 116-123.

35. Cheng, S.F.; Hseu, Z.Y. In-situ immobilization of cadmium and lead by different amendments in two contaminated soils. *Water Air Soil Pollut.* **2001**, *140*, 73-84.
36. Yi, N.; Wu, Y.G.; Fan, L.; Hu, S.H. 2019. Remediating Cd-Contaminated Soils Using Natural and Chitosan-Introduced Zeolite, Bentonite, and Activated Carbon. *Pol. J. Environ. Stud.* **28**, 1461-1468.
37. Wang, B.L.; Wang, C.P.; Li, J.; Sun, H.W.; Xu, Z. Remediation of alkaline soil with heavy metal contamination using tourmaline as a novel amendment. *J. Environ. Chem. Eng.* **2014**, *2*, 1281-1286.
38. Wang, Q.; Awasthi, M.K.; Ren, X.N.; Zhao, J.Z.; Li, R.H.; Shen, F.; Zhang, Z.Q. Effect of calcium bentonite on Zn and Cu mobility and their accumulation in vegetable growth in soil amended with compost during consecutive planting. *Environ. Sci. Pollut. Res.* **2017**, *24*, 15645-15654.
39. Abdelhafez, A.A.; Li, J.H.; Abbas, M.H.H. Feasibility of biochar manufactured from organic wastes on the stabilization of heavy metals in a metal smelter contaminated soil. *Chemosphere.* **2014**, *117*, 66-71.
40. Zhang, R.H.; Li, Z.G.; Liu, X.D.; Wang, B.C.; Zhou, G.L.; Huang, X.X.; Lin, C.F.; Wang, A.H.; Brooks, M.; Immobilization and bioavailability of heavy metals in greenhouse soils amended with rice straw-derived biochar. *Ecol. Eng.* **2017**, *98*, 183-188.
41. Shuman, L. Organic waste amendments effect on zinc fractions of two soils. *J. Environ. Qual.* **1999**, *28*, 1442-1447.
42. Gadepalle, V.; Ouki, S.; Van Herwijnen, R.; Hutchings, T. Immobilization of heavy metals in soil using natural and waste materials for vegetation establishment on contaminated sites. *Soil Sediment. Cont.* **2007**, *16*: 233-251.
43. van Herwijnen, R.; Lavery, T.; Poole, J.; Hodson, M.; Hutchings, T. The effect of organic materials on the mobility and toxicity of metals in contaminated soils. *Appl. Geochem.* **2007b**, *22*, 2422-2434.
44. van Herwijnen, R.; Hutchings, T.; Al-Tabbaa, A.; Moffat, A.; Johns, O.; Ouki, S. Remediation of metal contaminated soil with mineral-amended composts. *Environ. Pollut.* **2007a**, *150*, 347-354.
45. Meng, J.; Tao, M.M.; Wang, L.L.; Liu, X.M.; Xu, J.M. Changes in heavy metal bioavailability and speciation from a Pb-Zn mining soil amended with biochars from co-pyrolysis of rice straw and swine manure. *Sci. Total Environ.* **2018**, *633*, 300-307.
46. Li, H.; Shi, W.Y.; Shao, H.B.; Sha, M.A. The remediation of the lead-polluted garden soil by natural zeolite. *J. Hazard. Mater.* **2009**, *169*, 1106-1111.
47. Wu, Y.J.; Zhou, H.; Zou, Z.J.; Zhu, W.; Yang, W.T.; Peng, P.Q.; Zeng, M.; Liao, B.H. A three-year in-situ study on the persistence of a combined amendment (limestone+sepiolite) for remedying paddy soil polluted with heavy metals. *Ecotox. Environ. Safe.* **2016**, *130*, 163-170.
48. Boostani, H.R.; Hardie, A.G.; Najafi-Ghiri, M.; Khalili, D. Investigation of cadmium immobilization in a contaminated calcareous soil as influenced by biochars and natural zeolite application. *Int. J. Environ. Sci. Technol.* **2018**, *15*, 2433-2446.
49. Liu, C.; Wang, H.; Tang, X.; Guan, Z.; Reid, B.J.; Rajapaksha, A.U.; Ok, Y.S.; Sun, H. Biochar increased water holding capacity but accelerated organic carbon leaching from a sloping farmland soil in China. *Environ. Sci. Pollut. Res.* **2016**, *23*, 995-1006.
50. Gao, J.K.; Lv, J.L.; Wu, H.M.; Dai, Y.C.; Nasir, M. Impacts of wheat straw addition on dissolved organic matter characteristics in cadmium-contaminated soils: Insights from fluorescence spectroscopy and environmental implications. *Chemosphere.* **2018**, *193*, 1027-1035.
51. Usman, A.R.A.; Kuzyakov, Y.K.; Stahr, E. Effect of clay minerals on extractability of heavy metals and sewage sludge mineralization in soil. *Chem. Ecol.* **20** (1): 1-13.
52. Zhou, H.; Zhou, X.; Zeng, M.; Liao, B.H.; Liu, L.; Yang, W.T.; Wu, Y.M.; Qiu, Q.Y.; Wang, Y.J. Effects of combined amendments on heavy metal accumulation in rice (*Oryza sativa* L.) planted on contaminated paddy soil. *Ecotox. Environ. Safe.* **2014**, *101*, 226- 232.
53. Li, Q.; Cai, S.; Mo, C.; Chu, B.; Peng, L.; Yang, F. Toxic effects of heavy metals and their accumulation in vegetables grown in a saline soil. *Ecotox. Environ. Safe.* **2010**, *73*: 84-88.
54. Cui, H.B.; Zhou, J.; Si, Y.B.; Mao, J.D.; Zhao, Q.G.; Fang, G.D.; Liang, J.N. Immobilization of Cu and Cd in a contaminated soil: one- and four-year field effects. *J. Soil Sediment.* **2014**, *14*, 1397-1406.
55. Khan, M.J.; Jones, D.L. Chemical and organic immobilizing treatments for reducing phytoavailability of heavy metals in copper mine tailings. *J. Plant Nutr. Soil Sci.* **2008**, *171*, 908-916.
56. Zhang, M.; Pu, J. Mineral materials as feasible amendments to stabilize heavy metals in polluted urban soils. *J. Environ. Sci.* **2011**, *23* (4), 607-615.

57. Almas, A.R.; McBride, M.B.; Singh, B.R. Solubility and lability of cadmium and zinc in two soils treated with organic matter. *Soil Sci.* **2000**, *165*, 250-259.
58. Zhao, .; Xu, R.; Ma, F.; Li, Y.; Wang, L. Effects of biochars derived from chicken manure and rape straw on speciation and phytoavailability of cd to maize in artificially contaminated loess soil. *J. Environ. Manage.* **2016**, *184*, 569-574.
59. Bashir, S.; Rizwan, M.S.; Salam, A.; Fu, Q.L.; Zhu, J.; Shaaban, M.; Hu, H.Q. Cadmium Immobilization Potential of Rice Straw-Derived Biochar, Zeolite and Rock Phosphate: Extraction Techniques and Adsorption Mechanism. *B. Environ. Contam. Tox.* **2018b**, *3*: 1-6.
60. Castaldi, P.; Santona, L.; Melis, P. 2005. Heavy metal immobilization by chemical amendments in a polluted soil and influence on white lupin growth. *Chemosphere.* **60**, 365-371.
61. Ahmad, M.; Usman, A.R.A.; Al-Faraj, A.S.; Ahmad, M.; Sallam, A.; Al-Wabe, M.I. Phosphorus-loaded biochar changes soil heavy metals availability and uptake potential of maize (*Zea mays*, L.) plants. *Chemosphere.* **2018**, *194*, 327-339.
62. Bogusz, A.; Oleszczuk, P. Sequential extraction of nickel and zinc in sewage sludge- or biochar/sewage sludge-amended soil. *Sci. Total Environ.* **2018**, *636*, 927-935.
63. Sun, Y.B.; Li, Y.; Xu, Y.M.; Liang, X.F.; Wang, L. In situ stabilization remediation of cadmium (Cd) and lead (Pb) co-contaminated paddy soil using bentonite. *Appl. Clay Sci.* **2015**. 105-106, 200-206.
64. Bashir, S.; Zhu, J.; Fu, Q.L.; Hu, H.Q. Cadmium mobility, uptake and anti oxidative response of water spinach (*Ipomoea aquatic*) under rice straw biochar, zeolite and rock phosphate as amendments. *Chemosphere.* **2018a**. *194*, 579-587.
65. Wen, J.; Peng, Z.L.; Liu, Y.G.; Fang, Y.; Zeng, G.M.; Zhang, S.Y. A case study of evaluating zeolite, CaCO₃, and MnO₂ for Cd-contaminated sediment reuse in soil. *J. Soils Sediment.* **2018**. *18*, 323-332.
66. Kumararaja, P.; Manjaiah, K.M.; Datta, S.C.; Sarkar, B. Remediation of metal contaminated soil by aluminium pillared bentonite: Synthesis, characterisation, equilibrium study and plant growth experiment. *Appl. Clay Sci.* **2017**. *137*, 115-122.