

Article

Mental Health Assessment Method Based on Emotion Level Derived from Voice

Shuji Shinohara^{1,*}, Mitsuteru Nakamura², Yasuhiro Omiya³, Masakazu Higuchi¹, Naoki Hagiwara⁴, Shunji Mitsuyoshi¹, Hiroyuki Toda⁵, Taku Saito⁵, Masaaki Tanichi⁵, Aihide Yoshino⁵, and Shinich Tokuno¹

¹ Department of Bioengineering, Graduate School of Engineering, The University of Tokyo, 7-3-1 Hongo, Bunkyo-ku 113-8656, Japan; : shinohara@bioeng.t.u-tokyo.ac.jp (SS); higuchi@bioeng.t.u-tokyo.ac.jp (MH); mitsuyoshi@bioeng.t.u-tokyo.ac.jp (SM); tokuno@bioeng.t.u-tokyo.ac.jp (ST)

² Health Science Center at San Antonio, The University of Texas, San Antonio, TX, USA; nakamuram@uthscsa.edu (MN)

³ PST Inc., Yamashita-cho 2, Naka-ku, Yokohama, Japan; omiya@medical-pst.com (YO)

⁴ AGI Inc., 1-9-1-8F, Higashi-shimbashi, Minato-ku, Tokyo, Japan; hagiwara@agi-web.co.jp (NH)

⁵ Department of Psychiatry, National Defense Medical College, Namiki 3-2, Tokorozawa, Japan; toda1973@gmail.com (HT); t.saito3025@gmail.com, (TS); mtanichi@gmail.com (MT); aihide@ndmc.ac.jp (AY)

* Correspondence: shinohara@bioeng.t.u-tokyo.ac.jp; Tel.: +81-3-5841-0439; Fax: +81-3-5841-7798

Abstract: In many developed countries, mental health disorders have become problematic, and the economic loss due to treatment costs and interference with work is immeasurable. Therefore, we developed a method to assess individuals' mental health using emotional components contained in their voice. We propose two indices of mental health: vitality, a short-term index, and mental activity, a long-term index capturing the trends in vitality. To evaluate our method, we used the voices of healthy individuals ($n = 14$) and patients with major depression ($n = 30$). The patients were also assessed by specialists using the Hamilton Rating Scale for Depression (HAM-D). A significant negative correlation existed between the vitality extracted from the voices and HAM-D scores ($r = -0.33$, $p < .05$). We could discriminate the voice data of healthy individuals and patients having depression with a high accuracy using the vitality ($p = .0085$, area under the curve = 0.76). Further, we developed a method to estimate stress through emotion instead of analyzing stress directly from voice data. By daily monitoring of vitality using smartphones, we can encourage hospital visits for people before they become depressed or during the early stages of depression, to prevent adverse consequences of depression.

Keywords: mental health assessment; vitality; mental activity; voice index; emotion analysis; noninvasiveness

1. Introduction

Mental health disorders have become a major issue in several developed countries [1], and the economic loss due to treatment costs and interference with work is enormous [2]. Therefore, a simple technique to determine individuals' depressive state and stress level is desired.

Self-administered psychological tests, such as the General Health Questionnaire (GHQ) [3,4] and Beck Depression Inventory (BDI) [5,6], can be used as screening methods for patients with mental health disorders. In addition, a stress-check method that uses biomarkers in saliva [7] and blood has been proposed [8]. Although self-administered psychological tests are useful for early detection and as diagnostic aids, there is a problem with reporting bias in which specific information such as smoking history and medical history are selectively suppressed or expressed by participants

[9]. Stress-check methods that use biomarkers also have problems such as the cost of the test and the burden on the participants during specimen collection; i.e., they are not convenient.

On the other hand, with the recent widespread use of smartphones, pathological analysis using voice data has become popular [10–12]. Voice analysis using smartphones is not only noninvasive, it does not require a dedicated device; thus, it can be performed conveniently and remotely.

The relationship between mental illness and voice has been observed in previous studies; e.g., studies regarding the speaking rate of patients with depression [13–15] and studies on switching pause and percent pause of patients with depression [15,16]. Studies have also been conducted in which Lyapunov exponents and Kolmogorov entropy for the voice of patients with depression were measured using chaos analysis [17]. Vicsi et al. used frequency analysis and showed that the shimmer and jitter in vowels as voiced by patients with depression were higher than those of healthy people, and the first and second formant frequencies were low [18]. Zhou et al. proposed a new feature derived from the Teager energy operator for the classification of voices under stress [19]. Further, Shinohara et al. proposed a method that assesses mental health from envelope information for pitch and speech waveforms [20].

Meanwhile, stress is known to have an impact on emotions [21], and a method is being developed to estimate stress through emotion instead of analyzing stress directly from voice data [22–24]. Mitsuyoshi et al. [22] proposed an algorithm that estimates the expression of emotion from emotion components of the voice—the vocal affect display. In addition, they experimentally analyzed the relationship between this index and stress and estimated individuals' stress level from their voice. In the present study, sensibility technology (ST) that analyzes emotion in speakers' voices was used [25–27]. More specifically, this study proposes a method to assess the mental health of a speaker from the emotional components in their voice using ST with a focus on the relationship between mental health and emotions.

A significant negative correlation was found to exist between the proposed voice index and the Hamilton Rating Scale for Depression scores ($r = -0.33$, $p < .05$). Furthermore, we could discriminate the voice data of healthy individuals and patients with depression with high accuracy using the voice index ($p = .0085$, area under the curve (AUC) = 0.76).

2. Materials and Methods

2.1. Acquisition of Voices

In this study, we collected voice data in two categories—healthy individuals and outpatients with depression. All participants provided written consent. Voice acquisition of the patient group was performed intermittently from August 2013 to October 2014 with outpatients at Kitahara rehabilitation hospital in Japan. Voices were recorded during patients' conversations with physicians during examination. All data were then confirmed audibly; overlaps with other speakers and background noises were removed manually.

Voices of healthy people were acquired from February to mid-May 2015. During the acquisition period, participants worked normally at their jobs without visiting medical facilities for a mental illness. Voice acquisition was continuously performed once every several days; at each time, 14 types of fixed phrases were read aloud twice. Voices were recorded in a quiet environment with little background noise.

Voices were recorded by a gun microphone (AT9944: audio-technica, Tokyo, Japan) placed approximately 100 cm from the participant or by a pin microphone (ME52W: OLYMPUS, Tokyo, Japan) attached to the chest at approximately 15 cm from the participant's mouth. The recording device was MS-PST1 (NORITSU KOKI, Wakayama, Japan; not commercially available).

Table 1 shows participants' information per group. It should be noted that the number of participants and the number of data differed because data may have been collected multiple times from the same participant on different days. The average number of data collected per healthy person was 24.4 ± 33.3 for men and 6.3 ± 6.1 for women. For patients with depression, it was 6.0 ± 2.9

for men and 6.8 ± 3.2 for women. These collected data were used to create algorithms to calculate vitality and mental activity.

Table 1. Experimental participant information for algorithm preparation.

Group	Sex	Number of participants	Mean age	Number of data
Healthy	Male	9	42.9 ± 5.6	220
	Female	4	33.3 ± 15.4	25
Major depression	Male	4	54.0 ± 12.0	24
	Female	5	49.4 ± 15.4	34

Regarding the above-described recorded voice, a healthy person’s voice was recorded uttering a fixed phrase. On the other hand, a patient’s voice was recorded during free speech in the form of a dialogue with a doctor, and the type of speech differed between a healthy person and a patient. Further, the recording location differed. To unify both speech types and recording environments, data for algorithm verification were collected at the National Defense Medical College Hospital in Japan with participants’ consent. Participants were informed that the anonymity and confidentiality of their data were guaranteed and that they were free to withdraw at any time. Participants were not rewarded for their participation.

First, from December 2015 to June 2016, fixed-phrase reading voices were collected from outpatients with major depression. Table 2 shows 17 types of Japanese fixed phrases that were used for recording. At the time of voice collection, specialists evaluated patients’ depression severity using the Hamilton Rating Scale for Depression (HAM-D) [28]. The HAM-D is not a self-assessment-type psychological test; rather, experts, such as doctors, evaluate the characteristic items of depression symptoms. The purpose of the HAM-D is for a professional to objectively quantify an individual’s depressive state. On the other hand, for voices of healthy individuals, in mid-December 2016, the same fixed-phrase reading voices as the patients were recorded in the same examination room as the patients. However, for healthy people, severity assessment using the HAM-D was not conducted.

Patients were included if they had been diagnosed with a major depressive disorder according to the Diagnostic and Statistical Manual of Mental Disorders [29] and were aged over 20 years. They were excluded if they had been diagnosed with a serious physical disorder or organic brain disease. They were diagnosed by a psychiatrist using the Mini-International Neuropsychiatric Interview [30].

The protocol of this study was designed in accordance with the Declaration of Helsinki and relevant domestic guidelines issued by the concerned authority in Japan. The protocol was approved by the ethics committee of the National Defense Medical College (no. 2248) and the Kitahara Rehabilitation Hospital Ethics Committee (no. 3). According to Japanese law, the sensitivity of audio files is similar to that of any other personal information and cannot be published without consent. In this research protocol, we did not obtain consent from the subjects to publish the raw audio files as a corpus. Hence, we only published the analysis data and the source code of the analysis program.

Table 2. Seventeen phrases used for recording.

No.	Phrase in Japanese	Purpose (meaning)
1	I-ro-ha-ni-ho-he-to	Non-emotional (no meaning, like “a-b-c”)
2	Honjitsu ha seiten nari	Non-emotional (It is fine today)
3	Tsurezurenaru mama ni	Non-emotional (Having nothing to do)
4	Wagahai ha neko dearu	Non-emotional (I am a cat)
5	Mukashi aru tokoro ni	Non-emotional (Once upon a time, there lived)
6	a-i-u-e-o	Check pronunciation of vowel sounds (no meaning like “a-b-c”)
7	Ga-gi-gu-ge-go	Check sonant pronunciation (no meaning, like “a-b-c”)
8	Ra-ri-ru-re-ro	Check liquid sound pronunciation (no meaning,

		like “a-b-c”)
9	Pa-pi-pu-pe-po	Check p-sound pronunciation (no meaning, like “a-b-c”)
10	Omoeba tooku he kita monda	Non-emotional (While thinking, I have come far)
11	Garapagosu shotou	Check pronunciation (Galápagos Islands)
12	Tsukarete guttari shiteimasu.	Emotional (I am tired/dead tired)
13	Totemo genki desu	Emotional (I am very cheerful)
14	Kinou ha yoku nemuremashita	Emotional (I was able to sleep well yesterday)
15	Shokuyoku ga arimasu	Emotional (I have an appetite)
16	Okorippoi desu	Emotional (I am irritable)
17	Kokoroga odayaka desu	Emotional (My heart is calm)

These voices were recorded by a pin microphone, ME52W (OLYMPUS, Tokyo, Japan), attached to the chest approximately 15 cm from each participants’ mouth. The recording device used was Portable Recorder R-26 (Roland, Shizuoka, Japan). Table 3 shows participants’ information for algorithm verification. The number of healthy individuals for verification and the number of their voice data were the same because they were collected only once from each healthy participant. Regarding patients, some participants performed multiple data acquisitions. Seven, three, and one performed data acquisition twice, thrice, and four times, respectively. Data were acquired only once from the remaining 19 people. The recording format of the voices was linear PCM, the sampling frequency was 11025 Hz, and the number of quantization bits was 16 bits.

Table 3. Experimental participant information for algorithm verification.

Group	Sex	Number of participants	Mean age	Number of data
Healthy	Male	10	42.7 ± 6.0	10
	Female	4	35.0 ± 14.4	4
Major depression	Male	19	43.7 ± 11.0	34
	Female	11	53.9 ± 8.2	12

2.2. Voice Emotion Analysis System

We used the software ST Ver. 3.0 (AGI Inc., Tokyo, Japan) [25–27] to extract emotions from participants’ voices. The categories of emotional elements detected by ST software are “anger,” “joy,” “sorrow,” “calmness,” and “excitement.” The strength of each emotion is represented as an integer value from “0” to 10. A value of “0” means that the input speech does not contain the emotion at all. A value of 10 means that the input speech contains the emotion most strongly. The unit of speech emotion analysis by ST software is “utterance.” This is a part of continuous voice divided by breath. When a silent state changes to a speech state, it is considered that an utterance has started. When the speech state continues for a certain period and changes to silence, it is considered that the utterance has ended. The presence of the silent state or speech state is determined from the volume using a threshold. The threshold was adjusted manually for each recording, as the volume of the audio is affected by the participant and the condition of the recording.

2.3. Algorithm

2.3.1. Vitality and Mental Activity

We proposed two scales—vitality and mental activity—as indices for the degree of mental health obtained through voice analysis. Generally, “vitality” can be defined in diverse ways; however, here, vitality refers to a scale that measures low for patients with illnesses such as depression and high for healthy people. The main difference between vitality and mental activity is the duration of the measurement. Vitality is calculated from the emotional components of voice (calmness, anger, joy,

sorrow, and excitement) based on short-term voice data, such as a single phone conversation or a hospital visit.

On the other hand, mental activity is calculated based on vitality data accumulated over a certain period. Vitality changes based on the conditions at the time of measurement in the same manner that blood pressure changes between post-workout and rest. Similar to accurate identification of high blood pressure through long-term monitoring, in this study, we aimed to accurately assess mental health by introducing mental activity.

2.3.2. Vivacity and Relaxation

To calculate vitality, we introduced two new indices: “relaxation” and “vivacity.” To define these indices, we used four out of five indices output by ST: calmness, joy, sorrow, and excitement.

The fifth edition of the Diagnostic and Statistical Manual of Mental Disorders describes the characteristics of a major depressive episode as a continuing depressive state with the loss of interests and happiness and feelings of sorrow and emptiness [29]. In contrast, if there is a component of joy more prevalent, relative to sorrow in emotion, it is considered a good mental state. Consequently, vivacity for an utterance was defined as follows:

$$Vivacity = \frac{Joy}{Joy+Sorrow} . \quad (1)$$

Stress and tension are major factors in mental health disorders. On the other hand, the relaxed state is mentally positive; thus, relaxation for an utterance was defined as follows:

$$Relaxation = \frac{Calm}{Calm+Excitement} . \quad (2)$$

In other words, relaxation increases with the increasing calmness component of emotion and decreasing excitement. Each emotional value output by ST is expressed with integers in the range of 0–10. Therefore, vivacity and relaxation become real numbers in the range of 0.0–1.0. Vivacity and relaxation, as defined above, were calculated for each utterance. Further, we define vivacity and relaxation for an acquired voice as the mean value for each utterance contained in the acquired voice.

2.3.3. Vitality Calculation Algorithm

Vitality was calculated as the weighted mean of vivacity and relaxation defined in the previous section. Figure 1 shows a scatter plot of relaxation and vivacity as calculated from the data for the algorithm preparation. Based on the straight line in the figure, vitality for each acquired voice was defined as follows:

$$Vitality = 0.60 \times Vivacity + 0.40 \times Relaxation \quad (3)$$

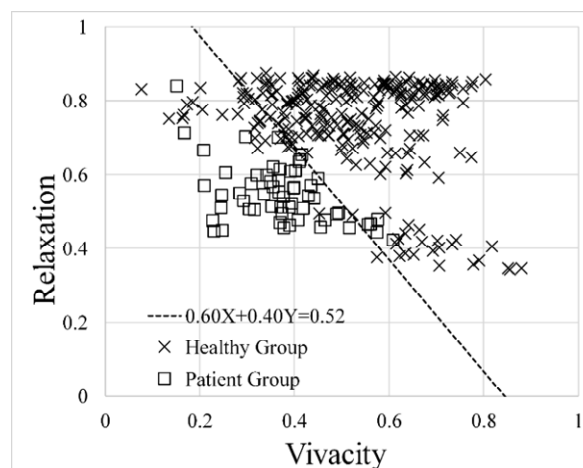


Figure 1. Scatter plot of relaxation and vivacity. Data are plotted for each voice acquisition. There are 245 data for the 13 people in the healthy group and 58 for the 9 people in the patient group. The straight line separates the healthy group from the patient group ($0.60X + 0.40Y = 0.52$).

2.3.4. Mental Activity Calculation Algorithm

Vitality was calculated from short-term voice data such as a single examination or consultation. Therefore, depending on participants' current mood, even healthy people might score low in vitality, while patients may score high. To compensate for such a weakness, mental activity was calculated from long-term trends in vitality. Specifically, to express long-term trend in vitality, we calculated the mean of accumulated vitality ($\overline{Vitality}$).

Furthermore, when vitality has little fluctuation and is stagnant at low values, the patient was determined to have low mental activity. To actualize such a determination, we introduce a new index: standard deviation ($\overline{VitalitySD}$) that expresses variations in vitalities for utterances contained in acquired voice. Then, the mean of vitality standard deviation of the accumulated acquired voice ($\overline{VitalitySD}$) was calculated.

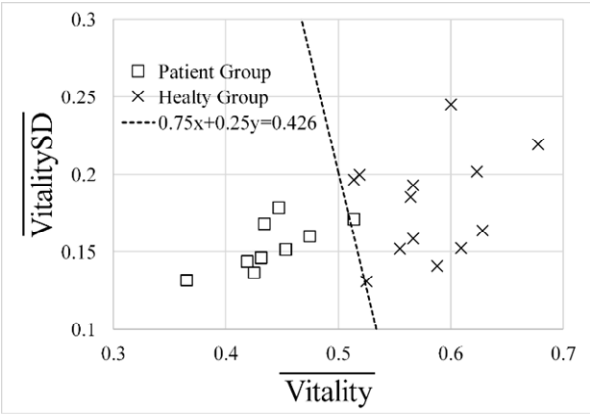


Figure 2. Scatter plot of mean vitality and the mean standard deviation of vitality for each participant (N = 22).

Figure 2 is a scatter plot of the mean vitality and mean standard deviation of vitality for each participant calculated from the data for the algorithm preparation. The number of data plotted were 13 people for the healthy group and 9 people for the patient group (N = 22). When calculating the mean, we used all acquired voice data. In the figure, we added a straight line that separates the healthy group and the patient group ($0.75X + 0.25Y = 0.426$). Based on this line and using the mean and standard deviation of vitality, we define mental activity as follows:

$$MindActivity = 0.75 \times \overline{Vitality} + 0.25 \times \overline{VitalitySD} \tag{4}$$

2.4. Analysis Method

According to the definition of Zimmerman et al. [31], the data of the patient group were divided into three groups by HAM-D score: no depression (≤ 7), mild (8–16), and moderate or severe (≥ 17).

The vitality of the four groups (i.e., these three and the healthy group) were compared with each other. P-values from Tukey–Kramer tests, the AUC of the receiver operating characteristic (ROC) curve, sensitivity, and specificity were used to evaluate the classification accuracy of vitality.

3. Results

3.1. HAM-D Score

The mean values of HAM-D score in each group are shown in Table 4. In addition, the mild group and the moderate or severe group are collectively referred to as the depression group

(HAM-D score ≥ 8). The mean HAM-D score for the depression group was 16.1 ± 7.4 ($N = 22$). The number of participants in each group was 11 men and 8 women in the no depression group, and 5 men and 3 women in the mild group. All three participants in the moderate or severe group were men.

Table 4. Average value of Hamilton Rating Scale for Depression (HAM-D) score for each group.

Group	Number of participants	Number of data	Mean HAM-D score \pm SD
No depression (HAM-D ≤ 7)	19	24	3.1 ± 2.3
Mild (HAM-D = 8–16)	8	13	11.5 ± 3.2
Moderate or severe (HAM-D ≥ 17)	3	9	22.8 ± 6.6

3.2. Performance Evaluation of Vitality

We evaluated the performance of vitality using the data for algorithm verification shown in Table 3. Figure 3 shows the relationship between HAM-D score and vitality for 46 data obtained from the patient group. There was a significant negative correlation between the two ($r = -0.33$, $n = 46$, $p < .05$).

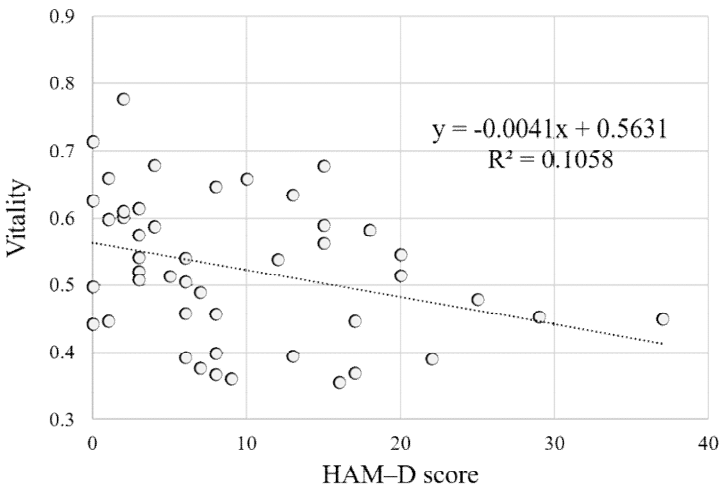


Figure 3. Relationship between Hamilton Rating Scale for Depression (HAM-D) score and vitality in the data of patient group for algorithm verification.

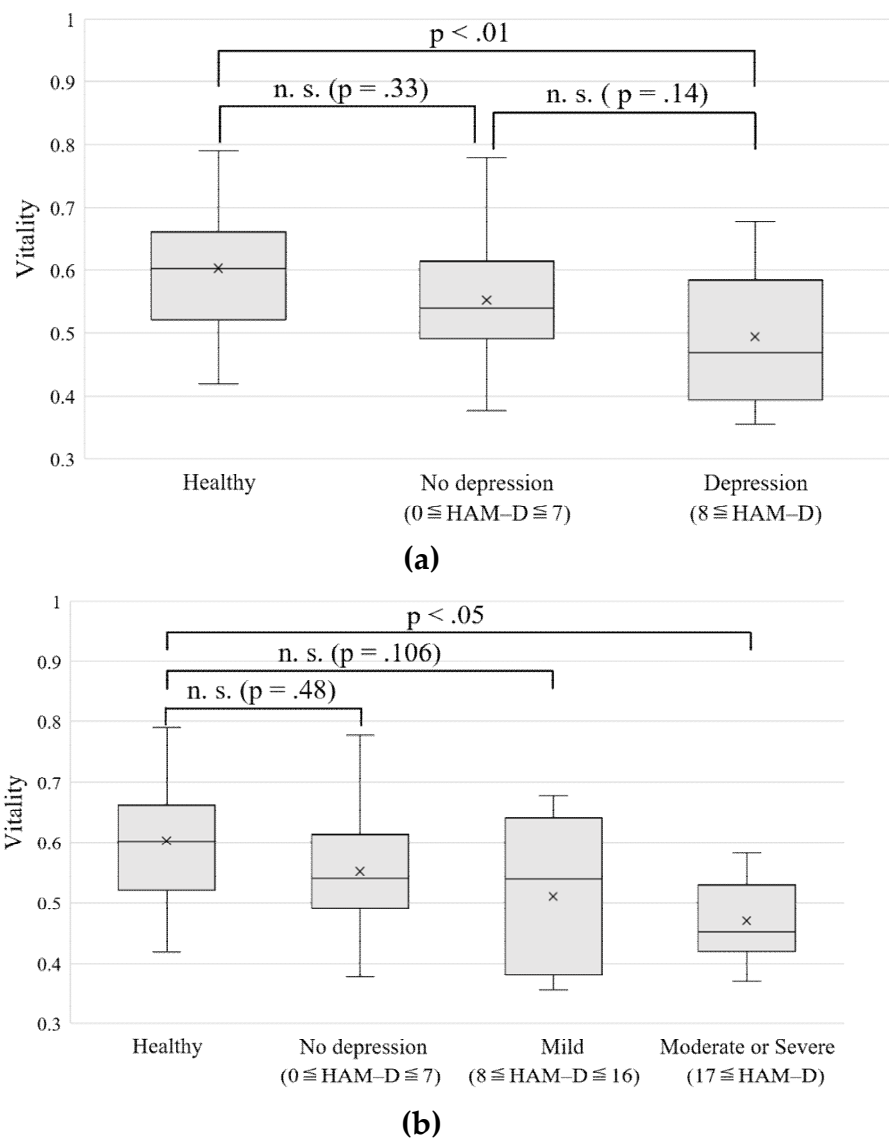


Figure 4. Comparison of vitality for each group: (a) Data distribution of a healthy group, the no depression group, and the depression group. (b) Data distribution when the depression group is divided into the mild group and the moderate or severe group. HAM-D: Hamilton Rating Scale for Depression

Figure 4 shows the distribution of vitality scores of the healthy group, no depression group, mild group, moderate or severe group, and depression group. The mean vitality in each group was 0.60 ± 0.10 ($n = 14$), 0.55 ± 0.10 ($n = 24$), 0.51 ± 0.13 ($n = 13$), 0.47 ± 0.07 ($n = 9$), and 0.49 ± 0.11 ($n = 22$), respectively.

The Tukey–Kramer test revealed significant differences between the healthy group and the depression group, and between the healthy group and the moderate or severe group ($p = .0085$ and $.020$, respectively). We used the statistical analysis software R [32].

Next, to evaluate the discrimination performance of vitality, the AUC of the ROC curve, sensitivity, and specificity were used. Figure 5 shows the ROC curves when vitality was used to identify whether the data for verification are for the healthy group or for each patient group. Here, the horizontal axis represents 1-specificity (false positive rate), and the vertical axis represents sensitivity (positive rate).

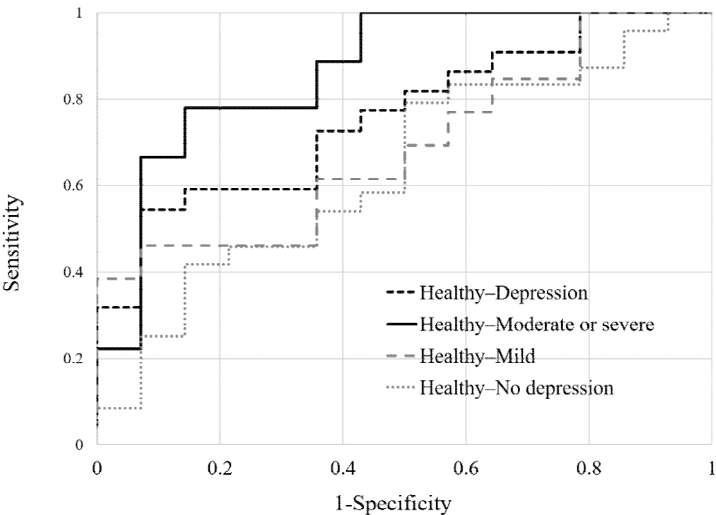


Figure 5. Receiver operating characteristic curves when using vitality to identify groups.

Table 5 shows the performance when the data of the healthy group and each group were distinguished using vitality. The AUC was 0.87, and the sensitivity and specificity were 0.78 and 0.86, respectively, regarding the discrimination performance between the healthy group and the moderate or severe group. On the other hand, both AUCs were less than 0.7 regarding discrimination performance between the healthy group and the no depression group or mild group.

Table 5. Discrimination ability of vitality.

Group	AUC ¹	Sensitivity	Specificity
Healthy-Depression	0.76	0.55	0.93
Healthy-Moderate or severe	0.87	0.78	0.86
Healthy-Mild	0.69	0.46	0.93
Healthy-No depression	0.64	0.80	0.50

¹ AUC: area under the curve of the receiver operating characteristic curve.

4. Discussion

In this study, we developed a method to measure mental health using emotional components contained in voice. Two indicators were proposed: vitality based on short-term voice data and mental activity calculated from long-term voice data. As shown in Figure 3, there was a significant negative correlation between vitality and HAM-D score (i.e., depression severity assessed by a physician). In addition, as shown in Figure 4, the group with a higher severity of depression tended to have a lower mean vitality.

There was a significant difference between the healthy group and the depression group, and between the healthy group and the moderate or severe group in vitality. On the other hand, there was no significant difference between the healthy group and the no depression group with almost no depressive symptoms, even if they were outpatients with depression. This suggests the possibility of measuring treatment effects by vitality (i.e., voice). Moreover, as shown in Figure 5 and Table 5, the voice data of the healthy group and the voice data of the moderate or severe group could be identified with high accuracy using vitality. This suggests the possibility of screening for severe depression in individuals by using voice.

In our previous study, we verified vitality with Romanian and Russian native speakers [33]. In this verification, BDI tests were conducted simultaneously with voice recordings. There was a significant difference between the mean vitality of the depression high-risk group (BDI scores ≥ 17) and the mean vitality of the depression low-risk group (BDI scores < 17 ; $p < .05$). Specifically, the scores for question 9—concerning suicidal ideation—took a value that ranged 0–3. There was a significant difference between the mean vitality of the suicide low-risk group (0 or 1 points) and the mean vitality of the suicide high-risk group (2 or 3 points; $p < .01$). In the future, we will examine the vitality of native speakers of other languages, such as English.

As a limitation of this research, only the fixed-phrase read-out speech was used for verification. To apply vitality to free speech such as a call, further verification is required. Furthermore, in the verification data, the number of voices collected for each participant, sex ratio, and age were not unified between the groups. These differences may be reflected in the features of voice. For example, all participants in the moderate or severe group were men, and the number of participants was as small as three. In the future, it is necessary to acquire many voices of female patients, especially those with severe depression, and to evaluate the performance level of vitality.

Further, mental activity was not validated because continuous data could not be collected sufficiently for the same participants in both the healthy group and the patient group. However, comparing Figures 1 and 2, showing data for algorithm preparation, there is a possibility that mental activity can more accurately identify the data as compared to vitality, which will be addressed in the future.

Vitality and mental activity can be measured only by voice, and their advantages are that they are non-invasive and less expensive than self-administered tests such as the GHQ-30 and BDI and stress-check methods using saliva and blood. Moreover, it is also possible to record day-to-day state changes easily by implementing them on smartphones or other similar devices.

We developed a smartphone application that implements the algorithm for vitality and mental activity—called the Mind Monitoring System (MIMOSYS). We are currently conducting worldwide demonstration experiments using the MIMOSYS [34]. In the future, we plan to verify the effectiveness of vitality and mental activity with such large-scale data.

5. Conclusions

In this study, we developed a method to measure mental health from voice. The algorithm to estimate stress through emotion instead of analyzing stress directly from voice data is novel. The MIMOSYS implemented the algorithm for vitality and mental activity, which is a cost-effective and convenient measurement device. If the correlation between HAM-D score and vitality can be further enhanced, it may be used to aid doctors' diagnoses in the future. By daily monitoring of vitality and mental activity using the MIMOSYS, we can encourage hospital visits for people before they become depressed or during the early stages of depression. This may lead to reduced economic loss due to treatment costs and interference with work.

Author Contributions: Conceptualization, S.T., S.M., and S.S.; validation, S.S.; formal analysis, S.S.; data curation, A.Y., H.T., T.S., and M.T.; writing—original draft preparation, S.S.; writing—review and editing, S.T.; supervision, S.T.; project administration, S.T.; funding acquisition, S.S. All authors have read and agreed to the published version of the manuscript.

Funding: This research was supported by the Center of Innovation Program from the Japan Science and Technology Agency and by JSPS KAKENHI, grant number JP16K01408.

Acknowledgments: We thank Dr. Shinsuke Kondo for assistance with data collection and all participants for participating. We also thank Editage [<http://www.editage.com>] for English-language editing.

Conflicts of Interest: MH, MN, and ST received financial support from PST Inc until 2019 and currently report no financial support from the company. All other authors declare no conflicts of interest.

Ethical Statements: All subjects gave their informed consent for inclusion before they participated in the study. The study was conducted in accordance with the Declaration of Helsinki, and the protocol was approved by the

326

Ethics Committee of the National Defense Medical College (no. 2248) and the Kitahara Rehabilitation Hospital

327

Ethics Committee (no. 3).

References

1. World Health Organization. *The global burden of disease: 2004 update*. WHO Press: Geneva, Switzerland, 2008; pp. 46–49.
2. Kessler, R.C.; Akiskal, H.S.; Ames, M.; Birnbaum, H.; Greenberg, P.; Hirschfeld, R.M.A.; Jin, R.; Merikangas, K.R.; Simon, G.E.; Wang, P.S. Prevalence and effects of mood disorders on work performance in a nationally representative sample of U.S. Workers. *Am J Psychiatry* **2006**, *163*(9), 1561–1568. <https://doi.org/10.1176/ajp.2006.163.9.1561>
3. Goldberg, D.P.; Blackwell B. Psychiatric illness in general practice: a detailed study using a new method of case identification. *Br Med J* **1970**, *2*(5707), 439–443. <https://doi.org/10.1136/bmj.2.5707.439>
4. Goldberg, D. *Manual of the general health questionnaire*. NFER Nelson: Windsor, UK, 1978.
5. Beck, A.T. A systematic investigation of depression. *Compr Psychiatry* **1961**, *2*(3), 163–170. [https://doi.org/10.1016/S0010-440X\(61\)80020-5](https://doi.org/10.1016/S0010-440X(61)80020-5)
6. Beck, A.T.; Ward, C.H.; Mendelson, M.; Mock, J.; Erbaugh, J. An inventory for measuring depression. *Arch Gen Psychiatry* **1961**, *4*(6), 561–71. <https://doi.org/10.1001/archpsyc.1961.01710120031004>
7. Takai, N.; Yamaguchi, M.; Aragaki, T.; Eto, K.; Uchihashi, K.; Nishikawa, Y. Effect of psychological stress on the salivary cortisol and amylase levels in healthy young adults. *Arch Oral Biol* **2004**, *49*(12) 963–968. <https://doi.org/10.1016/j.archoralbio.2004.06.007>
8. Suzuki, G.; Tokuno, S.; Nibuya, M.; Ishida, T.; Yamamoto, T.; Mukai, Y.; Mitani, K.; Tsumatori, G.; Scott, D.; Shimizu, K. Decreased plasma brain-derived neurotrophic factor and vascular endothelial growth factor concentrations during military training. *PLoS One* **2014**, *9*(2) e89455:1–e89455:8. <https://doi.org/10.1371/journal.pone.0089455>
9. Porta, M. *A dictionary of epidemiology*, 6th ed; Oxford University Press: New York, NY, USA, 2014.
10. Arora, S.; Venkataraman, V.; Zhan, A.; Donohue, S.; Biglan, K.M.; Dorsey, E.R.; Little, M.A. Detecting and monitoring the symptoms of Parkinson's disease using smartphones: a pilot study. *Parkinsonism Relat Disord* **2015**, *21*(6), 650–653. <https://doi.org/10.1016/j.parkreldis.2015.02.026>
11. Rachuri, K.K.; Musolesi, M.; Mascolo, C.; Rentfrow, P.J.; Longworth, C.; Aucinas, A. EmotionSense: a mobile phones based adaptive platform for experimental social psychology research. In Proceedings of the 12th ACM international conference on Ubiquitous computing, 2010 Sep 26; ACM, 2010; 281–290. <https://doi.org/10.1145/1864349.1864393>
12. Lu, Hm; Frauendorfer, Dm; Rabbi, M.; Mast, M.S.; Chittaranjan, G.T.; Campbell, A.T.; Gatica-Perez, D.; Choudhury, T. Stresssense: Detecting stress in unconstrained acoustic environments using smartphones. In Proceedings of the 2012 ACM Conference on Ubiquitous Computing 2012 Sep 5; ACM, 2012; 351–360. <https://doi.org/10.1145/2370216.2370270>
13. Cannizzaro, M.; Harel, B.; Reilly, N.; Chappell, P.; Snyder, P.J. Voice acoustical measurement of the severity of major depression. *Brain Cognition* **2004**, *56*(1), 30–35. <https://doi.org/10.1016/j.bandc.2004.05.003>
14. Moore, E.; Clements, M.; Peifer, J.; Weisser, L. Analysis of prosodic variation in speech for clinical depression. In Proceedings of the 25th Annual International Conference of the IEEE Engineering in Medicine and Biology Society, Cancun, Mexico 2003 Sep 17; IEEE; IEEE Cat. No. 03CH37439, Vol. 3, 2925–2928. <https://doi.org/10.1109/IEMBS.2003.1280531>
15. Mundt, J.C.; Snyder, P.J.; Cannizzaro, M.S.; Chappie, K.; Geralt, D.S. Voice acoustic measures of depression severity and treatment response collected via interactive voice response (IVR) technology. *J Neurolinguistics* **2007**, *20*(1), 50–64. <https://doi.org/10.1016/j.jneuroling.2006.04.001>
16. Yang, Y.; Fairbairn, C.; Cohn, J.F. Detecting depression severity from vocal prosody. *IEEE Transactions on Affective Computing* **2012**, *4*(2), 142–150. <https://doi.org/10.1109/T-AFFC.2012.38>
17. Shimizu, T.; Furuse, N.; Yamazaki, T.; Ueta, Y.; Sato, T.; Nagata, S. Chaos of vowel/a/in Japanese patients with depression: a preliminary study. *J Occupat Health* **2005**, *47*(3), 267–269. <https://doi.org/10.1539/joh.47.267>
18. Vicsi, K.; Sztahó, D.; Kiss, G. Examination of the sensitivity of acoustic-phonetic parameters of speech to depression. In 2012 IEEE 3rd International Conference on Cognitive Info Communications (CogInfoCom), Kosice, Slovakia, 2012 Dec 2; IEEE; 511–515. <https://doi.org/10.1109/CogInfoCom.2012.6422035>
19. Zhou, G.; Hansen, J.H.; Kaiser, J.F. Nonlinear feature based classification of speech under stress. *IEEE Trans Speech Audio Process* **2001**, *9*(3), 201–216. <https://doi.org/10.1109/89.905995>
20. Shinohara, S.; Mitsuyoshi, S.; Nakamura, M.; Omiya, Y.; Tsumatori, G.; Tokuno, S. Validity of a voice-based evaluation method for effectiveness of behavioural therapy. In International Symposium on Pervasive Computing Paradigms for Mental Health 2015 Sep 24; Serino, S., Matic, A., Giakoumis, D.,

- Lopez, G., Cipresso, P, Eds.; Springer: Cham, Switzerland; 43–51.
https://doi.org/10.1007/978-3-319-32270-4_5
21. Lazarus, R.S. From psychological stress to the emotions: a history of changing outlooks. *Ann Rev Psychol* **1993**, *44*(1), 1–22. <https://doi.org/10.1146/annurev.ps.44.020193.000245>
 22. Mitsuyoshi, S.; Nakamura, M.; Omiya, Y.; Shinohara, S.; Hagiwara, N.; Tokuno, S. Mental status assessment of disaster relief personnel by vocal affect display based on voice emotion recognition. *Disaster Mil Med* **2017**, *3*(1), 4:1–4:9. <https://doi.org/10.1186/s40696-017-0032-0>
 23. Tokuno, S.; Mitsuyoshi, S.; Suzuki, G.; Tsumatori G. Stress evaluation using voice emotion recognition technology: a novel stress evaluation technology for disaster responders. In Proceedings of the XVI World Congress of Psychiatry 2014 Sep; Vol. 2, 301.
 24. Tokuno, S.; Tsumatori, G.; Shono, S.; Takei, E.; Yamamoto, T.; Suzuki, G.; Mitsuyoshi, S.; Shimura, M. Usage of emotion recognition in military health care. 2011 Defense Science Research Conference and Expo. IEEE: 2011; 1–5. <https://doi.org/10.1109/DSR.2011.6026823>
 25. Mitsuyoshi, S.; Ren, F.; Tanaka, Y.; Kuroiwa, S. Non-verbal voice emotion analysis system. *Int J ICIC* **2006**, *2*(4), 819–830.
 26. Mitsuyoshi, S.; Shibasaki, K.; Tanaka, Y.; Kato, M.; Murata, T.; Minami, T.; Yagura, H.; Ren, F. Emotion voice analysis system connected to the human brain. 2007 International Conference on Natural Language Processing and Knowledge Engineering, Beijing, China, 2007; IEEE: 2007; 476–484. <https://doi.org/10.1109/NLPKE.2007.4368074>
 27. Mitsuyoshi, S.; inventor; Advanced Generation Interface Inc, assignee. Emotion recognizing method, sensibility creating method, device, and software. United States patent US 7,340,393. 2008 Mar 4.
 28. Hamilton, M.A. Development of a rating scale for primary depressive illness. *Br J Soc Clin Psychol* **1967**, *6*(4), 278–296. <https://doi.org/10.1111/j.2044-8260.1967.tb00530.x>
 29. American Psychiatric Association. *Diagnostic and Statistical Manual of Mental Disorders*, 5th ed.; American Psychiatric Association: Arlington, VA, USA, 2013. <https://doi.org/10.1176/appi.books.9780890425596>
 30. Otsubo, T.; Tanaka, K.; Koda, R.; Shinoda, J.; Sano, N.; Tanaka, S.; Aoyama, H.; Mimura, M.; Kamijima, K. Reliability and validity of Japanese version of the Mini-International Neuropsychiatric Interview. *Psychiatry Clin. Neurosci* **2005**, *59*, 517–526. <https://doi.org/10.1111/j.1440-1819.2005.01408.x>
 31. Zimmerman, M.; Martinez, J.H.; Young, D.; Chelminski, I.; Dalrymple, K. Severity classification on the Hamilton depression rating scale. *J Affect Disord* **2013**, *150*(2), 384–8. <https://doi.org/10.1016/j.jad.2013.04.028>
 32. The Comprehensive R Archive Network. Available online: cran.r-project.org/ (accessed on 15 July 2020)
 33. Uraguchi, T.; Shinohara, S.; Denis, N.A.; Țaicu, M.; Săvoiu, G.; Omiya, Y.; Nakamura, M.; Higuchi, M.; Takano, T.; Hagiwara, N.; Mitsuyoshi, S.; Tokuno, S. Evaluation of Mind Monitoring System (MIMOSYS) by subjects with Romanian and Russian as their native language. 40th International Conference of the IEEE Engineering in Medicine and Biology Society; 2018 July.
 34. Shinohara, S.; Omiya, Y.; Hagiwara, N.; Nakamura, M.; Higuchi, M.; Kirita, T.; Takano, T.; Mitsuyoshi, S.; Tokuno, S. Case studies of utilization of the mind monitoring system (MIMOSYS) using voice and its future prospects. *ESMSJ* **2017**, *7*(1), 7–12.