

## Article

# Displacements Monitoring over Czechia by IT4S1 System for Automatised Interferometric Measurements Using Sentinel-1 Data

Milan Lazecky <sup>1,2\*</sup>, Emma Hatton <sup>3</sup>, Pablo J. Gonzalez <sup>4,5</sup>, Ivana Hlavacova <sup>6,7</sup>, Eva Jirankova <sup>8</sup>, Frantisek Dvorak <sup>9</sup>, Zdenek Sustr <sup>9</sup>, and Jan Martinovic <sup>1</sup>

<sup>1</sup> IT4Innovations, VSB-TU Ostrava, 17. listopadu 15, 708 33 Ostrava-Poruba, Czechia; milan.lazecky@vsb.cz (M.L.), jan.martinovic@vsb.cz (J.M.)

<sup>2</sup> COMET, School of Earth and Environment, University of Leeds, Leeds LS2 9JT, United Kingdom

<sup>3</sup> Independent Researcher, Leeds LS2 9JT, United Kingdom; emma.hatton@protonmail.com (E.H.)

<sup>4</sup> COMET, Department of Earth, Ocean and Ecological Sciences, University of Liverpool, Liverpool L69 3BX, UK; pablo.jose.gonzalez-mendez@liverpool.ac.uk (P.G.)

<sup>5</sup> Volcanology Research Group, Department of Life and Earth Sciences, IPNA-CSIC, 38206 Tenerife, Spain

<sup>6</sup> Gisat Corp., Milady Horákové 57, 170 00 Praha 7, Czechia; ivana.hlavacova@gisat.cz (I.H.)

<sup>7</sup> Department of Geoinformatics, VSB-TU Ostrava, 17. listopadu 15, 708 33 Ostrava-Poruba, Czechia

<sup>8</sup> Institute of Geonics of the Czech Academy of Sciences, Studentska 1768, 708 33 Ostrava-Poruba, Czechia; eva.jirankova@ugn.cas.cz (E.J.)

<sup>9</sup> CESNET, z. s. p. o., Zikova 1903/4, 160 00 Prague, Czechia; valtri@civ.zcu.cz (F.D.), sustr4@cesnet.cz (Z.S.)

\* Correspondence: milan.lazecky@vsb.cz (M.L.)

**Abstract:** Sentinel-1 satellite system continuously observes European countries in a relatively high revisit frequency of 6 days per orbital track. Given the Sentinel-1 configuration, most areas in Czechia are observed every 1–2 days by different tracks in a moderate resolution. This is attractive for various types of analyses by various research groups. The starting point for processing is an original data provided by ESA, for interferometry (InSAR) this level is a Single Look Complex (SLC) data. This work represents advantages of storing data augmented to a specifically corrected level of data, SLC-C. The presented database contains Czech nation-wide Sentinel-1 data stored in burst units that have been preprocessed to the state of a consistent well-coregistered dataset of SLC-C. These are resampled SLC data with their phase values reduced by a topographic phase signature, ready for fast interferometric analyses (an interferogram is generated by a complex conjugate between two stored SLC-C files). The data can be used directly into multitemporal interferometry techniques, *e.g.* Persistent Scatterers (PS) or Small Baseline (SB) techniques applied here. A further development of the nation-wide system utilising SLC-C data would lead into a dynamic state where every new pre-processed burst triggers a processing update to detect unexpected changes from InSAR time series and therefore provide a signal for early warning against a potential dangerous displacement, *e.g.* a landslide, instability of an engineering structure or a formation of a sinkhole. An update of the processing chain would also allow use of cross-polarised Sentinel-1 data, needed for polarimetric analyses. The current system is running at a national supercomputing centre IT4Innovations in interconnection to the Czech Copernicus Collaborative Ground Segment (CESNET), providing fast on-demand InSAR results over Czech territories. A full nation-wide PS processing using data over Czechia has been performed in 2017, discovering several areas of land deformation. Its downsampled version and basic findings are demonstrated within the article.

**Keywords:** Displacement measurement; High performance computing; Radar interferometry; Synthetic aperture radar

## 1. Introduction

Copernicus Sentinel-1 Synthetic Aperture Radar (SAR) satellite constellation offers radar imagery of the European continent every 12 days since October 2014 and every 6 days since autumn 2016. Its technical characteristics are very satisfying for applying SAR interferometry (InSAR) techniques. Several methods of multi-temporal InSAR (MT-InSAR) developed since the publication about Permanent/Persistent Scatterers (PS) technique in 2000 [1]. Current PS implementations applied on Sentinel-1 data allow identification of near-vertical displacements in the rate of up to few decimeters per year with the standard deviation often around 1 mm/year. However the technique is applicable only on “clean” points, *i.e.* at least with a minimal presence of vegetation in the observed location. For monitoring of natural areas, specific techniques were developed such as Small Baseline InSAR (SB) [2] or partially coherent PS InSAR [3].

All of these techniques basically start with interferograms generated from focused Single Look Complex (SLC) SAR data (a format containing the radar phase component). Situation with Sentinel-1 images is more complex due to usage of so-called Terrain Observation by Progressive Scans (TOPS) mode [4]. A significant constraint of TOPS mode is the necessity of Enhanced Spectral Diversity (ESD) correction [5] achievable by assessing overlaps of sub-images taken from slightly varying observing angles, called bursts. A size of one burst is in average ~90x20 km. In practice, this means ESD correction must be applied on larger portions of the Sentinel-1 data and therefore complicates processing approaches focusing on local areas, typically to monitor displacements in areas close to or covering an edge of a burst.

We present a specific system that approaches the large-scale InSAR processing on the level of separate Sentinel-1 burst units after their coregistration, ESD correction and other phase corrections as implemented in ISCE/ISCE2 [6], including *e.g.* Elevation Antenna Patterns (EAP), or basic radiometric corrections. We introduce a specific type of data produced after ISCE corrections are modelled and removed from other than reference data - we name the data corrected/calibrated SLC (SLC-C or *SLCc*). They differ from typical coregistered data by not containing phase induced by topography (see Section 2.1).

The *SLCc* data are produced for all Sentinel-1 SLC data over Czechia and are stored in a database offering fast and effective post-processing, especially InSAR analyses using some of implemented MT-InSAR techniques. The whole system is based on several open-source software packages and tools, described within the article. It brings its own set of solutions and demonstrates the advantage of *SLCc* becoming a preferred option for SAR analysis ready data (ARD) that allows direct formation of interferograms. The currently produced nation-wide dataset of such ARD data can be further explored by other, non-InSAR methods where cross-polarised signal is not a prerequisite, such as flood detection or evaluation of urban growth *etc.* For the complete Sentinel-1 ARD, the approach should be updated to cover cross-polarisation data as well.

Own past works have proven the efficiency of Sentinel-1 InSAR analysis for identification of mainly vertical displacements, ranging from few millimetres per year such as displacements of bridges in Ostrava and Prague [7] or Plover Cove dam in Hong-Kong [8] to the range of centimetres per year in subsiding Konya city in Turkey [9] or decimetres per month in case of areal subsidence troughs in Karvina region [10, 11]. In proper conditions, a motion of a slope can be also identified making the techniques and the satellite itself useful for distinguishing between active and non-active landslides [12]. These works and findings were used as a proof of a unique and practical applicability of Sentinel-1 InSAR analyses and were the base for establishing this nation-wide Sentinel-1 InSAR monitoring system first as Sentinelloshka [13], with an improved version as IT4S1 [14] at the Czech national supercomputing center, IT4Innovations.

The source codes of the IT4S1 system solution have been published and are available online: <https://code.it4i.cz/laz048/it4s1>. It contains a modified metadata database structures from a previous version of the LiCSAR system [15]. This article provides an overview on the processing approaches and experience from monitoring over Czechia.

### 1.1. Goals and Expected Benefits for Society

An established system able of fast on-demand or automatic InSAR processing of Sentinel-1 data would allow generating several types of moderate resolution products that may prove valuable for a direct use by national or local structures:

- static annual maps of active slope failures (especially creeps or slow landslides). Risk management is often not aware of a landslide threat in inundated areas where floods may activate an existing slope failure. InSAR-based maps of slow active landslides/unstable slopes can give an additional (though experimental) information raising the caution of landslide activity in affected areas,

- static maps of (vertical) displacements of structures, with a millimetric sensitivity – remotely acquired information about current displacements can play an important role for identification of potential structure issues. As typical structures, one may mention transportation objects (motor roads, railroads, bridges), dam constructions, inhabited buildings, electricity towers *etc.* To achieve the most complete information, data from opposing satellite passes can be combined into an analysis known as a decomposition of line-of-sight (LOS) vectors into horizontal and vertical directions,

- static (semi-)annual maps of terrain development in urban or non-urban areas, such as development of *e.g.* mine-induced subsidence, terrain deformation related to hydrogeological changes (*e.g.* droughts) or pressure changes due to underground gas storage fluctuations *etc.* Provided information about identified terrain changes or a stabilisation of movements in affected areas can be important information for *e.g.* municipal urban planning facilities.

Furthermore, based on the burst *SLC<sub>c</sub>* database, a dynamic early warning system can be arranged in a relatively straightforward way that would continuously update displacement values over critical infrastructure or sparsely vegetated slopes and raise attention to end-users for a verification, in a rapid manner.

### 1.2 Computational and Storage Resources

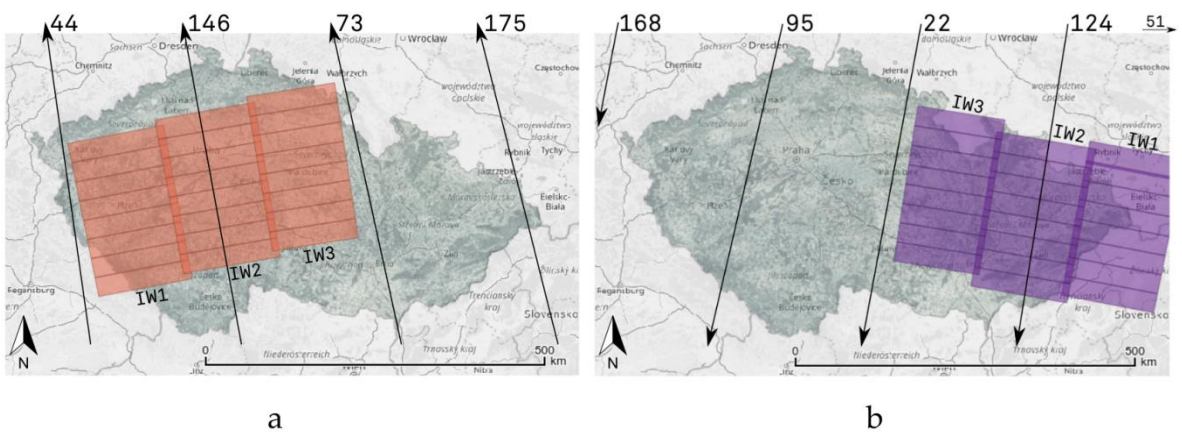
Czech national supercomputing centre, IT4Innovations (<http://www.it4i.cz>), offers High Performance Computing (HPC) facilities continuously upgraded to keep in the first hundred of world supercomputers listed by TOP500 (<https://www.top500.org>) - the current cluster “Barbora” has not been listed at the time of preparing this article. We have used the “Salomon” cluster for the IT4S1 processing. Salomon cluster consists of 1,008 computational nodes of which 576 are regular computing nodes and 432 accelerated nodes. Each node is a powerful x86-64 computer, equipped with 24 cores (two twelve-core Intel Xeon processors) and 128 GB RAM. The nodes are interlinked by high speed InfiniBand and Ethernet networks. A Lustre-based shared storage system offers a capacity of 1.7 PB.

Storage of all Copernicus data including images from Sentinel-1 constellation is maintained within a Czech Copernicus Collaborative Segment (CollGS) by CESNET organisation (<https://collgs.czechspaceportal.cz>). CESNET is an association of czech universities and the Czech Academy of Sciences that operates and develops the national e-infrastructure for science, research and education. CollGS is an open portal to distribute Copernicus data over Czechia. This facility ensures constant availability of storage for past and future Sentinel-1 acquisitions. An established connection with ESA through a Sentinel Data Relay Hub service allows fast ingestion of Sentinel-1 data to the system - every new *SLC* image should arrive to the Czech CollGS in less than 30 hours after image acquisition.

LiCSAR-based metadata database runs on a dedicated MySQL server, the generated *SLC<sub>c</sub>* data are permanently stored on a dedicated shared disk, both within the CESNET infrastructure. CESNET’s MetaCentrum computing infrastructure is used for an initial preparation of *SLC* data prior to their main processing towards *SLC<sub>c</sub>* (at IT4Innovations HPC).

1.3 Data coverage

Czechia is fully covered by 5 descending and 4 ascending relative orbit tracks of Sentinel-1. Sentinel-1 SLC data are distributed as zip files containing 8 bursts per each of 3 swaths of Sentinel-1 Interferometric Wide (IW) observation mode. Figure 1 shows examples of burst coverage by one zip file and provides an overview of centre lines related to satellite tracks within both ascending and descending passes. Table 1 shows a more detailed overview of Sentinel-1 data that cover Czechia and are processed within the system. In total, 177 ascending track bursts and 175 descending track bursts are included.



**Figure 1.** Projected Sentinel-1 centre lines for IW2 swaths of **a** ascending pass and **b** descending pass relative orbital tracks covering Czechia. Arrows depict direction of the satellite during each pass. Rectangles are projected burst units distributed within one SLC data file from relative orbit 146 (a) and 124 (b).

**Table 1.** Coverage of Sentinel-1 data over Czechia

relative orbit	swath	no. of bursts	incidence angle
descending tracks			
22	2	18	39.0°
22	3	17	43.6°
51	3	17	43.7°
95	1	18	33.6°
95	2	18	39.0°
95	3	18	43.7°
124	1	18	33.5°
124	2	18	39.0°
124	3	17	43.7°
168	1	18	33.7°
ascending tracks			
44	2	15	39.2°
44	3	18	43.8°
73	1	18	33.7°
73	2	18	39.1°
73	3	18	43.7°
146	1	18	33.7°
146	2	18	39.0°
146	3	17	43.7°
175	1	18	33.6°
175	2	17	39.1°



## 2. InSAR Functionality implemented within IT4S1

The IT4S1 system architecture consists of three levels, an SLC data pre-processor (see Section 2.1) that generates *SLC<sub>c</sub>* data, an MT-InSAR processor (see Section 2.2) and a post-processing that includes a basic visualisation part described in Section 2.3, for the purposes of this article.

### 2.1 Generation of *SLC-C* data

The generation of the *SLC<sub>c</sub>* ARD is the core part of the IT4S1 system architecture. It connects storage centres of Sentinel-1 SLC data (at CollGS) and of final processed *SLC<sub>c</sub>* data. A metadata database system (a metadata base) and SLC preprocessor are two separate servers. An HPC facility is used for the main *SLC<sub>c</sub>* processing, see Fig. 2.

**Figure 2.** Architecture of IT4S1 system Sentinel-1 burst *SLC-C* generation

After an ingestion of a new Sentinel-1 SLC acquisition to CollGS, a metadata database system solution transferred from LiCSAR [15] ensures a proper identification of its bursts including information about their geographic coverage. When activated, the SLC preprocessor loads the SLC data with the latest available ephemeris data and splits it into bursts. The SLC preprocessor is using current calibration auxiliary data for Sentinel-1 satellites and the latest ephemeris data for further usage. The high quality Precise Orbit Determination (POD) ephemeris are available 21 days after the Sentinel-1 data acquisition, however ISCE processing routines allow a lower quality on-board ephemeris with no significant loss of performance in further steps. Routines of ISCE [6] open-source InSAR processing package are run at the SLC preprocessor server and the preprocessed burst SLC images are uploaded to the *SLC<sub>c</sub>* processor (an IT4Innovations HPC facility).

At the *SLC<sub>c</sub>* processor HPC facility, a custom solution prepares coherent burst combinations in order to perform ESD computation and correction. At this stage, a chronologically preceding set of compatible *SLC<sub>c</sub>* burst images (already existing in the framework of the same relative orbit track, see Subsection 2.1.1) are linked to the processing chain as “primary” burst images. The newly arrived SLC image is recognised as a “secondary” image. The interferometric combinations between both primary and secondary bursts are extremely coherent due to the short temporal revisit time of Sentinel-1, therefore well applicable for ESD computation. Algorithms of ISCE are applied, performing the preprocessing of secondary bursts until the stage of generating range fine offset fields for every secondary burst. The fine offset field grids contain phase estimation of several non-displacement phase signature sources, including phase induced due to a stereoscopic effect of topography observed from two slightly different satellite positions at both primary and secondary bursts. In order to simulate this topographic phase, we apply an SRTM 1 arc-second digital elevation model (DEM) [16] to form a height-per-pixel image fitting the primary bursts during the initial step (Subsection 2.1.1). The range offset fields are removed from the secondary bursts and these are saved into an *SLC<sub>c</sub>* storage for further use. Such produced *SLC<sub>c</sub>* data are ready for a direct generation of a topography-free interferogram [17] by a simple operation of complex conjugate.



### 2.1.1 Establishing base dataset

As the first step, a systematic data storage environment is established, aiming for the data storage structure: RELOBR / SWATH / BURST\_TANX / YEAR, where RELOBR is a relative orbital track number of Sentinel-1 satellites, SWATH is a number from 1–3 identifying one of the three Sentinel-1 swaths, BURST\_TANX is a burst identifier based on a naming convention established by LiCSInfo approach of the LiCSAR system [15]. In order to avoid large number of files in BURST\_TANX folder, we sort them in subfolder YEAR (year of acquisition date). Names of the *SLC<sub>c</sub>* files are in the form of YYYYMMDD.slc (e.g. 20200201.slc for an *SLC<sub>c</sub>* image from 1st February 2020).

We establish a base dataset for each RELOBR/SWATH. Here, we manually select the primary SLC image, with the main condition to have a full burst coverage across the whole region of interest (across Czechia, in this case). The initial processing is performed by the original ISCE approach. Based on the acquisition metadata and automatically downloaded SRTM DEM, ISCE would generate files containing latitude, longitude, height and line of sight (LOS) angle values for every pixel in the reference SLC image. These files are modified and stored per burst, *i.e.* under the BURST\_TANX subfolder, in a *geom* folder.

### 2.1.2 Coregistration process

The coregistration process of a new acquisition A follows the original procedure as implemented by ISCE *topsApp.py* script [18], until the *fineresamp* step.

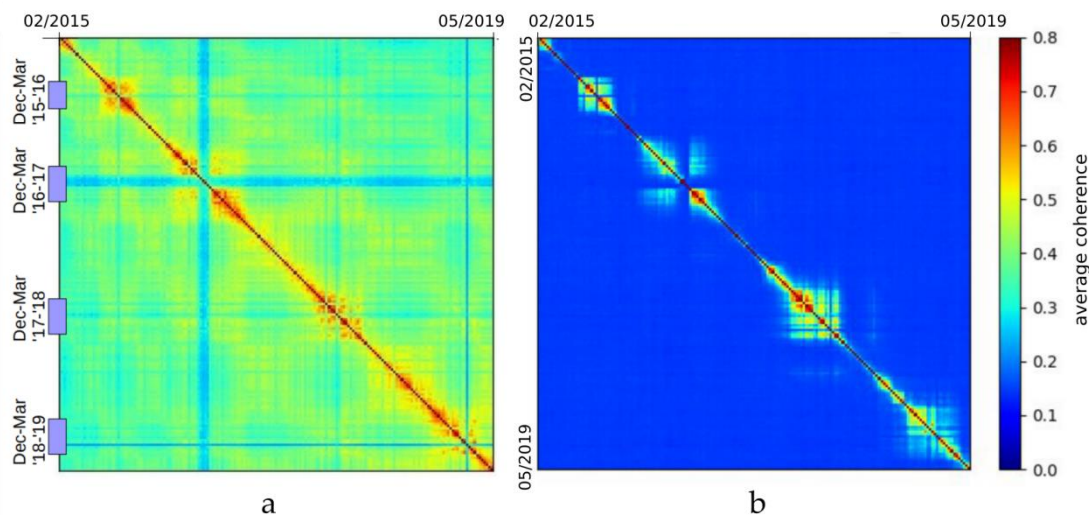
The existing *geom* data (containing lookup tables of 3-D geographic coordinates towards primary SLC data) are linked, rather than regenerated. In the case of other existing *SLC<sub>c</sub>* files in the database, a check is performed and the burst *SLC<sub>c</sub>* images of an acquisition B closest in time to the acquisition A data are linked as secondary reference data. The primary reference SLC data would be used to support the coregistration step by an amplitude cross-correlation, while the ESD estimation is performed towards the secondary reference data, not directly to the SLC data of the primary acquisition. As tested in [17] and shown in the results further on, we did not identify biases in any full resolution interferometric combination caused by this cascade approach, as the coregistration accuracy is anyway kept to the level of 0.001 pixel [19].

The key outputs of the ISCE *topsApp.py* coregistration approach, used as the basis for *SLC<sub>c</sub>* generation, are range and azimuth fine-offset files, correcting for a subpixel misregistration in the range and azimuth directions. These include both DEM-based height correction and the ESD-based correction and other refinements [18]. After the *fineresamp* step of *topsApp.py*, leading into a set of bursts resampled to the reference SLC, the resampled burst images *I* are deramped by a range fine offset file *R*. The azimuth fine offset file is neglected as (not considered significant). The deramping as the last step leading to burst *SLC<sub>c</sub>* files is performed according to Equation 1:

$$SLC_c = I \times \exp\left(-j \frac{4\pi r}{\lambda} R\right) \quad (1)$$

where *r* is a pixel resolution in the range direction and  $\lambda$  the SAR carrier wavelength.

Afterwards, a topography-free interferogram can be formed simply by a complex conjugate between any two *SLC<sub>c</sub>* files. We have formed coherence matrices from 15,932 interferometric combinations of a selected burst ID 95\_1\_21244 from a period between February 2015 to May 2019, and plotted in Fig. 3. The coherence matrices show a median coherence over small areas (~1,000 pixels) representing different types of scattering classes - urban and agricultural land types. The matrices can be used as a quality measure, demonstrating the interferometric signal is coherent also in combinations of *SLC<sub>c</sub>* files in very distant temporal baselines, as in case of urban areas (Fig. 3a). The effect of a signal decorrelation related probably to the presence of snow in winter months can be observed as drops of coherence. Selected agricultural area decorrelates especially in summer months (Fig. 3b), as expected.



**Figure 3.** Interferometric coherence matrices of burst ID 95\_1\_21244 (02/2015 - 05/2019) over: **a** urban area and **b** agricultural area.

## 2.2. Multitemporal InSAR Processing

The IT4S1 system is primarily designed for an on-demand InSAR analysis to identify ground or structure displacements in a given area of interest (AOI). The system performs a burst-wise multitemporal InSAR (MT-InSAR) processing. If the area of interest is larger than the burst, the separate MT-InSAR results per burst can be merged afterwards, *e.g.* using points in their overlap area as a reference. Cropping a burst towards AOI before the MT-InSAR processing is allowed - in such case, the system performs a small area processing using optimised parameters, more tolerant to the pixel phase stability. The parameters are optimised in relation to the scale of a selected area to process, but without taking temporal sampling into account. Currently different types of MT-InSAR implementations of PS and SB are available in the system (see further subsections), the primary processing is based on STAMPS MT-InSAR algorithms [20].

Depending on the number of points to process and the size of the dataset, a typical burst is processed by the STAMPS PS InSAR approach within 24–48 core-hours (in case of 100 interferograms dataset, formed in connection to a common primary *SLC*<sub>c</sub>), while it can take 72–96 core-hours for STAMPS SB InSAR approach (in the case of the same *SLC*<sub>c</sub> dataset, this would consist of 400 interferograms formed by default SB approach, combining data in 4 shortest temporal connections).

The IT4S1 architecture allows an advantageous use of an on-demand processing of a selected AOI. A script `it4s1_process_all.sh` would take latitude, longitude as coordinates for the centre point and radius of interest in kilometres, as basic parameters. Connected to burst metadata database, the script would identify bursts covering the AOI and would select overlapping bursts and generate their interferograms, in combinations set up based on requested processing method. These interferograms are generated in radar coordinates, either within the full burst, or cropped to the selected extents.

As outputs of requested processing methods (STAMPS PS only by default), the system generates comma-separated text (CSV) files per burst ID, containing computed measures such as a mean velocity rate, temporal coherence, estimated deformation value per image date and other parameters (*e.g.* standard deviation of the estimated velocity). Optional processing parameters include start and end dates, other processing techniques to be applied and a reference area. Processing parameters for STAMPS algorithms are scaled automatically regarding the size of the selected area. An overview of selected parameters and their use is shown in Table 2, the explanation of the parameters can be found in [21].



The processing chain starts by selecting pixel candidates based on amplitude dispersion index (ADI) computed from interferogram magnitude images. Afterwards, it runs STAMPS steps 1,2 and 4 in parallel (one patch per processing core), the step 3 (refinement of PS points selection) is skipped. Steps 6 and 7 iterate (6 iterations are performed in total), refining the error terms to improve the estimation of unwrapped phases. Almost every iteration includes specific optimisation to select the input set of interferograms (based on their standard deviation *ifg\_std* computed by *ps\_calc\_ifg\_std*), perform atmospheric phase correction, (optionally) 2-D deramping of the overall spatial phase ramp, *etc.* Finally, a custom approach is used to compute standard deviation and temporal coherence of the output estimates [17, 22].

**Table 2.** Selected STAMPS MT-InSAR parameters used within IT4S1 automatised processing chain

parameter	burst-wise PS	small area PS	small area SB
ADI threshold	0.4	0.4	0.52
gamma_max_iterations	3	5	5
gamma_change_convergence	0.01	0.01	0.04
clap_win	32	8-64 (size dependent)	8-64 (size dependent)
clap_low_pass_wavelength	800 m	800 m	600 m
max_topo_err	25 m	30 m	15 m
weed_standard_dev	1.4	1.5	1.0
merge_resample_size	50 m	-	50 m
unwrap_time_win	90 days	30 days	730 days
unwrap_gold_alpha	0.75	0.4	0.8
unwrap_gold_n_win	16	8	8-32 (size dependent)
unwrap_grid_size	320	200	200
ifg_std threshold (first iteration)	55	45	45
scla_deramp	yes	only areas > 10 km	only areas > 7 km

### 2.2.1 Primary processing by PS InSAR

The STAMPS PS approach starts from a dataset of wrapped differential interferogram images. Since the phase offsets due to topography were already removed in *SLC<sub>c</sub>* images, the generation of a burst-wise differential interferogram without spatial filtering is performed rapidly within 8 seconds per one computing core. Afterwards, the ADI is calculated using magnitude of formed interferograms, rather than of the backscatter intensity values extracted from original SLC images as used by original STAMPS PS routine [20]. The process of interferogram generation is parallelised using Parallel tool [23], in order to split processing of interferograms to available computing cores. STAMPS MT-InSAR algorithms have been parallelised in a similar manner - the processing splits the whole area into patches that are processed in parallel. The processed data are merged for the last STAMPS steps - the unwrapping and estimation of so-called spatially correlated look angle error (SCLA). These last steps are performed fast. They form an iterative process using different settings per each iterative run - these settings regulate the number (and quality) of interferograms used to estimate SCLA, optionally remove atmospheric phase correlated with DEM and remove an overall 2-D phase ramp if it appears within the whole area.

After processing using STAMPS PS method, the same formed dataset can be assessed by SALSIT PS InSAR tool [17]. SALSIT is an Octave-based open-source PS processor targeting infrastructure monitoring tasks [7, 24], and providing evaluation of a geodetic quality of measurements. Both implementations show similar outputs [24], but SALSIT parameters are set to

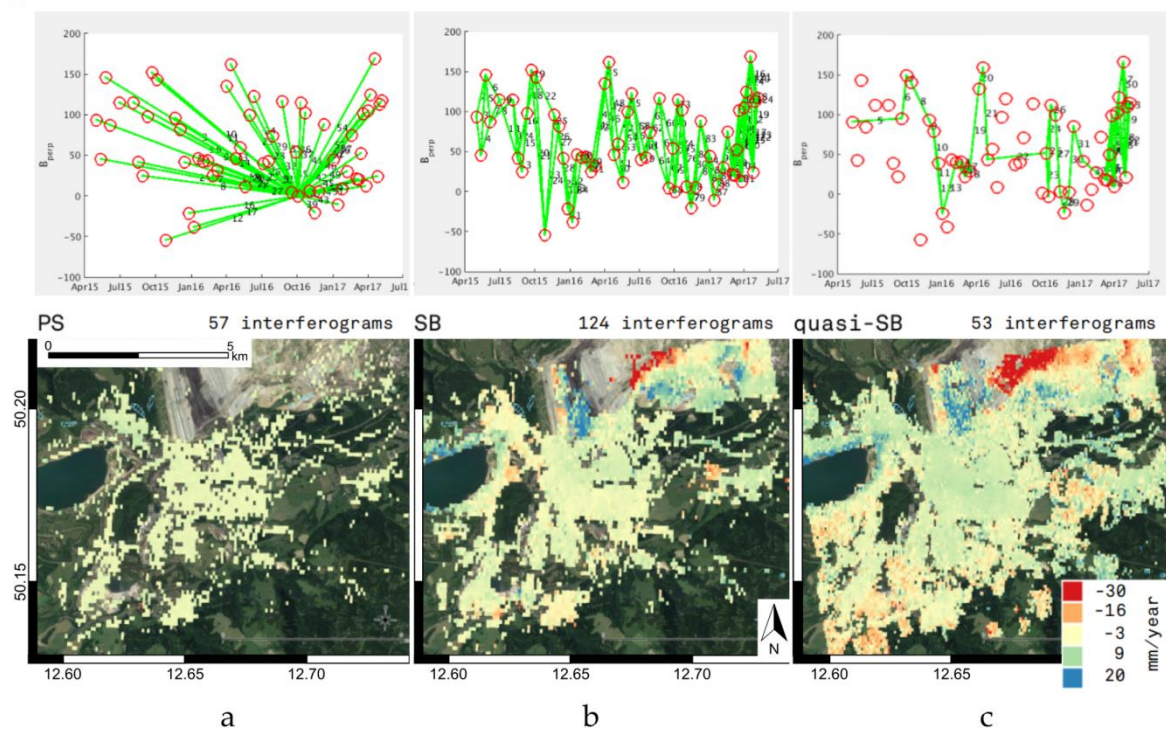
include as many PS points as possible, while a reduction of the point density is used within the STAMPS PS approach.

### 2.2.2 STAMPS SB and quasi-SB Processing

The full STAMPS processing chain merges results of both PS and SB techniques [20]. For STAMPS SB MT-InSAR, we form the network of SB interferograms in the fashion of combining each *SLC* image with four following dates, as in [15]. The following example uses a previous approach generating interferograms for only two following dates, with a spatial filtering of interferograms by a Goldstein technique implemented in Doris [25], applied prior to inclusion of SB connections to the STAMPS SB processing chain. Doris is used also to compute coherence images.

As seasonal snow is common in Czechia, it is often not possible to use winter acquisitions to form interferograms for the MT-InSAR time series inversion. Similarly, dense vegetation tends to decorrelate SAR signals fast during warm seasons. In order to improve the SB results and allow for identification of more points in the InSAR time series, the IT4S1 includes a custom workaround, named quasi-SB. Here, the formed SB interferograms are analysed for their overall (a median) spatial coherence values. A threshold for the median coherence is used to select interferograms that should be processed further. In case of losing the consistency of such subset (the dataset should be interconnected), new interferometric connections are generated to provide the necessary link to the STAMPS SB algorithm. The ADI is recalculated from the new subset of quasi-SB interferograms, leading to an increased number of SB candidate pixels for a reprocessing by STAMPS SB routine.

The effect is demonstrated in the area of Sokolov open pit mine [26], in Figure 4. Here, the average coherence threshold of 0.4 has been applied for a quasi-SB approach, leading to an increased number of evaluated SB points. The increased density of points within a subset of interferograms having a reasonable coherence also improves the 3-D phase unwrapping. On the other hand, a signal related to a deformation during the masked temporal periods is not monitored.



**Figure 4.** Sokolov open pit mine area processed by IT4S1 approaches (burst ID 44\_2\_8161): **a** STAMPS PS, **b** standard STAMPS SB and **c** optimised STAMPS quasi-SB using coherence threshold of 0.4. Top subfigures show plot of applied interferometric combinations, the bottom subfigures show estimated mean LOS displacement velocity.

### 2.2.3 LiCSBAS NSBAS Processing

We have lately implemented LiCSBAS software [27] to IT4S1. This tool is using unwrapped interferograms into an NSBAS time series inversion [28]. We use the same interferograms generated in the SB network, multilook them in 10/2 pixels ratio (range/azimuth SAR direction, the final resolution of pixel is ~26.5 m) and perform coherence-weighted unwrapping using snaphu [29]. We use this technique only as complementary, as the phase unwrapping of full InSAR scenes are often biased by decorrelating factors, especially due to dense vegetation cover in Czechia.

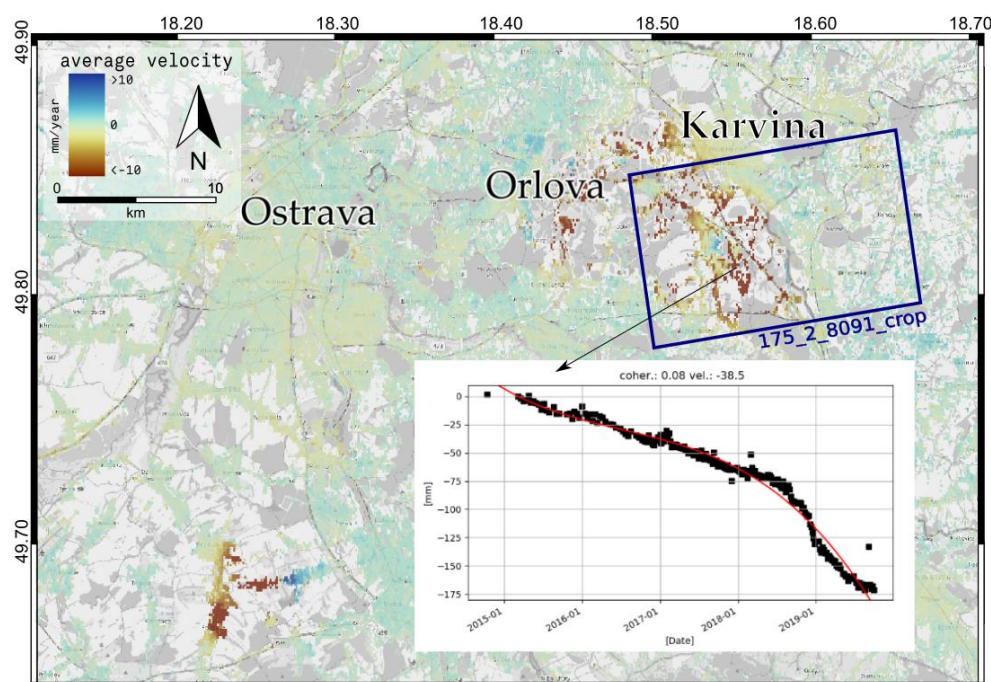
### 2.3. Visualization of Results

Results from MT-InSAR are exported into a comma-delimited text file (CSV) in order to import to a GIS interface. The CSV includes estimated LOS displacement values per each date, linear velocity estimate, estimate of a residual height of the pixel, geographic coordinates in WGS-84 system, temporal coherence and a standard deviation of the velocity estimate based on [17].

For the purposes of visualising and demonstrating mean velocity maps, we have used GDAL [30] to rasterise all processed outputs per burst into  $0.001^\circ$  resolution images, recompute their mean velocity values (in mm/year) to vertical direction w.r.t. their average incidence angle (see sssssssssssss and rounded to the nearest integer, merge and spatially smooth using cubic spline function and export to a simple web map: [https://espritoczech.github.io/espigis/mapa\\_insarcz.htm](https://espritoczech.github.io/espigis/mapa_insarcz.htm).

For plotting of time series figures for a selected point we currently use a custom giSAR toolbox [31] developed for Quantum GIS (currently for version 2.x only). An example of a PS processing result over Ostrava-Karvina undermined region in Fig. 5 displays time series of a selected point on top of the downsampled velocity raster, from the Quantum GIS+giSAR toolbox environment.

The time series plot also demonstrates the ability of the system to capture relatively fast non-linear displacements. This was achieved mainly by specifically optimised parameters for STAMPS PS processing, with the key parameter being *unwrap\_time* that can be established shorter in case of Sentinel-1 data, thanks to its high revisit frequency. In this case, manually selected *unwrap\_time* = 8 resulted in the least number of temporal phase unwrapping errors that would be otherwise present due to fast and non-linear terrain deformation causing phase jumps.



**Figure 5.** Example of a time series of a selected PS point, visualised using giSAR Quantum GIS toolbox. The area marked as 175\_2\_8091\_crop defines a reprocessed crop, plotted in Fig. 6.



### 3. Processing over Czech bursts

The IT4S1 system stores Sentinel-1 *SLC* data burst-wise. It is a dataset ready for direct application of time series processing techniques on a burst-wise level, or on burst subsets. This section provides examples of burst subset on-demand processing tasks (Subsection 3.1) and the full coverage PS product generated by a simple merge of estimated LOS velocities generated per each burst (Subsection 3.2).

Examples of application of the on-demand processing outputs of IT4S1 over Czech areas were documented in previous works. In the case of an underground gas storage facility in the Tvrdonice area, seasonal deformations were identified and their correlation to the gas reservoir processes was studied in [32] - there we identify a change of the seasonal deformations behaviour behind a tectonic fault. We have attempted to identify slope instabilities around Ostravice [26], concluding about unreliability of both PS and SB outputs in the area of dense vegetation for detection of slow slope instabilities.

As the PS technique is limited for monitoring areas with a lack of objects with a stable radar backscatter over time, we apply also the SB technique in order to increase the number and density of measurement points. The use of *SLC* data allows a fast generation of interferograms according to any custom defined graph of interferometric connections. In our current standard SB approach, we form four connections per an *SLC* epoch into the SB graph. The additional filtering and phase unwrapping operations are performed within STAMPS SB algorithms only on an interconnected selection of points having  $ADI > 0.52$  (see Table 2). This approach avoids biasing by decorrelated pixels, such as of densely vegetated areas, but may lead to phase unwrapping errors in moderately vegetated areas affected by a strong deformation signal. We experience this problem in the case of subsidence monitoring in non-urban areas due to an active underground mining, e.g. in Karvina region, demonstrated on a preliminary study of an active CSM Mine as follows.

#### 3.1. Small Area On-Demand Processing - CSM Mine Example

We have selected an 8x8 km area in the Karvina region undermined by an active black coal CSM Mine as an example demonstrating the on-demand processing routine. We have run an automated processing using both PS and SB techniques with optimised small area parameters (Table 2) and focus on a crop from a single burst 175\_2\_8091. Both techniques finished the burst crop processing within 2 reserved node-hours (48 core-hours), starting from *SLC* data.

Differences in deformation estimated by the automatic PS and SB can be observed in Fig. 6ab. The time series inversion by PS is accurate for stably reflecting objects, already for a small number of temporal samples [1, 22]. The increased density of points selected from coherent areas of short interferograms in STAMPS SB approach allows estimating deformations of a larger magnitude [2, 20]. The possibility of significant differences in relation to the selected processing technique demands a careful interpretation of the results. Further investigation (outside the scope of this article) should include combination of other bursts overlapping the AOI from different tracks [33].

In this example, we compare PS and SB outputs to levelling measurements available in the area. The precise levelling of points over the subsiding area was connected to a reference point outside the area. The measurement instrument DNA 03 Leica has mean kilometre error of 0.3 mm. Mean kilometre errors of measured and corrected height from the precise levelling ranged between 0.6–1.6 mm. The accuracy of differences of the measurements was evaluated in the principle of the law of accumulation of errors. The mean error of the height differences within each measurement epoch ranges between 0.8–2.3 mm, after referencing to the selected levelling reference point. For the double-difference towards the levelling point of interest (POI), the mean kilometric errors were calculated as 1.9–2.8 mm.

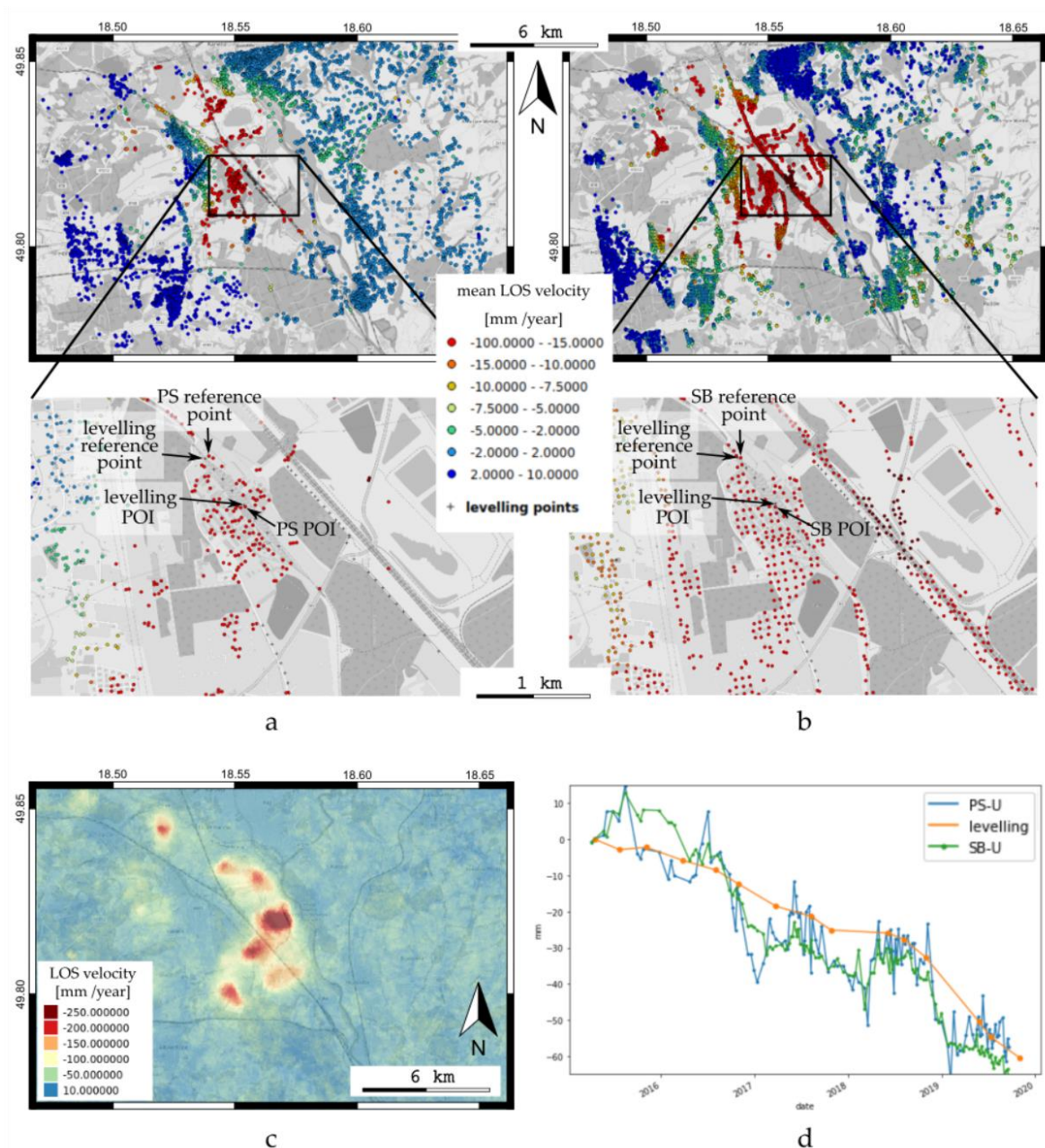
Both PS and SB results were referenced to a pixel closest to a selected levelling point and to a similar starting date (beginning of April 2015). Both output LOS estimates  $d_{LOS}$  were recomputed to

the vertical direction  $du$  in a simplified manner (see Equation 2), and plotted in Fig. 6d as PS-U and SB-U, together with corresponding differences of levelling measurements.

$$d_U = \frac{d_{LOS}}{\cos \theta_{inc}} \quad (2)$$

where  $\theta_{inc}$  is the mean LOS incidence angle of the SAR measurement.

The general deformation trends estimated by MT-InSAR are corresponding to the levelling, yet we observe significant differences within each temporal epoch, of up to a centimetre (see Fig. 6d). This can be related to continuous local changes (rectification of rails and an embankment between rails) that affect objects in the close neighbourhood of the stabilised reference levelling point. We should note that the MT-InSAR reference points differ from the exact levelling point. Instead they would represent an object having a dominant and stable radar response (in case of PS), or a cluster of scatterers contributing to the merged phase signal within a spatially filtered SB pixel (downsampled to 50x50 m, see Table 2).





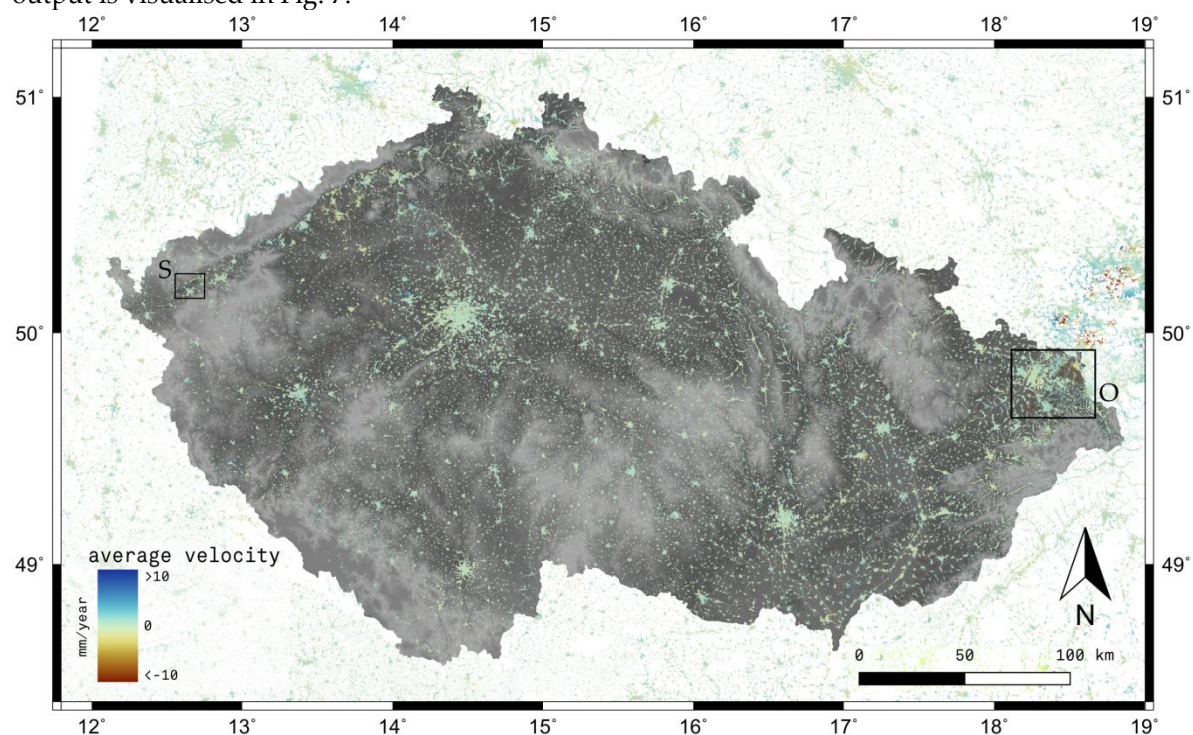
**Figure 6.** Mean LOS velocity estimated from burst ID 175\_2\_8091 using **a** STAMPS PS, **b** STAMPS SB, **c** LiCSBAS NSBAS (experimental); **d** comparison of LOS values of point of interest (POI) from **a,b** recomputed to vertical direction (U) and levelling measurements

Additionally, we include also a preview of the LiCSBAS algorithm [27] applied to the same graph of SB connections, in Fig. 6c. Here, we estimate LOS velocity rates over all unwrapped pixels in the area, including densely vegetated areas (covering most of the scene). While the subsiding areas were identified correctly with the estimated velocity rates corresponding to the STAMPS outputs, the vegetated zones (skipped by the STAMPS selective approach) are evaluated as strongly subsiding in less likely rates. The LiCSBAS output is a preliminary result that will be investigated further, preferably after solving for vegetation-related phase bias issues [34].

### 3.2. Nation-Wide Processing Output of Czechia

The nation-wide processing of the whole Czechia has been performed in the end of 2017. All 352 bursts were processed using STAMPS PS, having each between 90–120 *SLC* images per burst (total data of ~10 TB). In total, 8,856 core-hours were reserved for the processing, while the real processing time was 3,559 core-hours. The processing resulted in around 15 million PS points.

Most of Czech areas are covered by two descending and two ascending tracks. This would allow for an advanced analysis, computing horizontal and vertical motion vectors from the varying LOS observations [33]. However, in this test, only a simple merge was performed - mean velocity estimates were recomputed to the vertical direction averaged into burst-wise GeoTIFF raster files, resampled into ~100x100 m resolution (0.001° in WGS-84), and merged to form a global map of (mainly vertical) mean displacement velocity over Czechia, valid for the covered period between 10/2014-09/2017. As the displacements in Czechia are of a local scale, it was not necessary to incorporate correction on varying reference areas - we have used the default STAMPS referencing based on the average overall estimated values (we used a median rather than mean value). The output is visualised in Fig. 7.

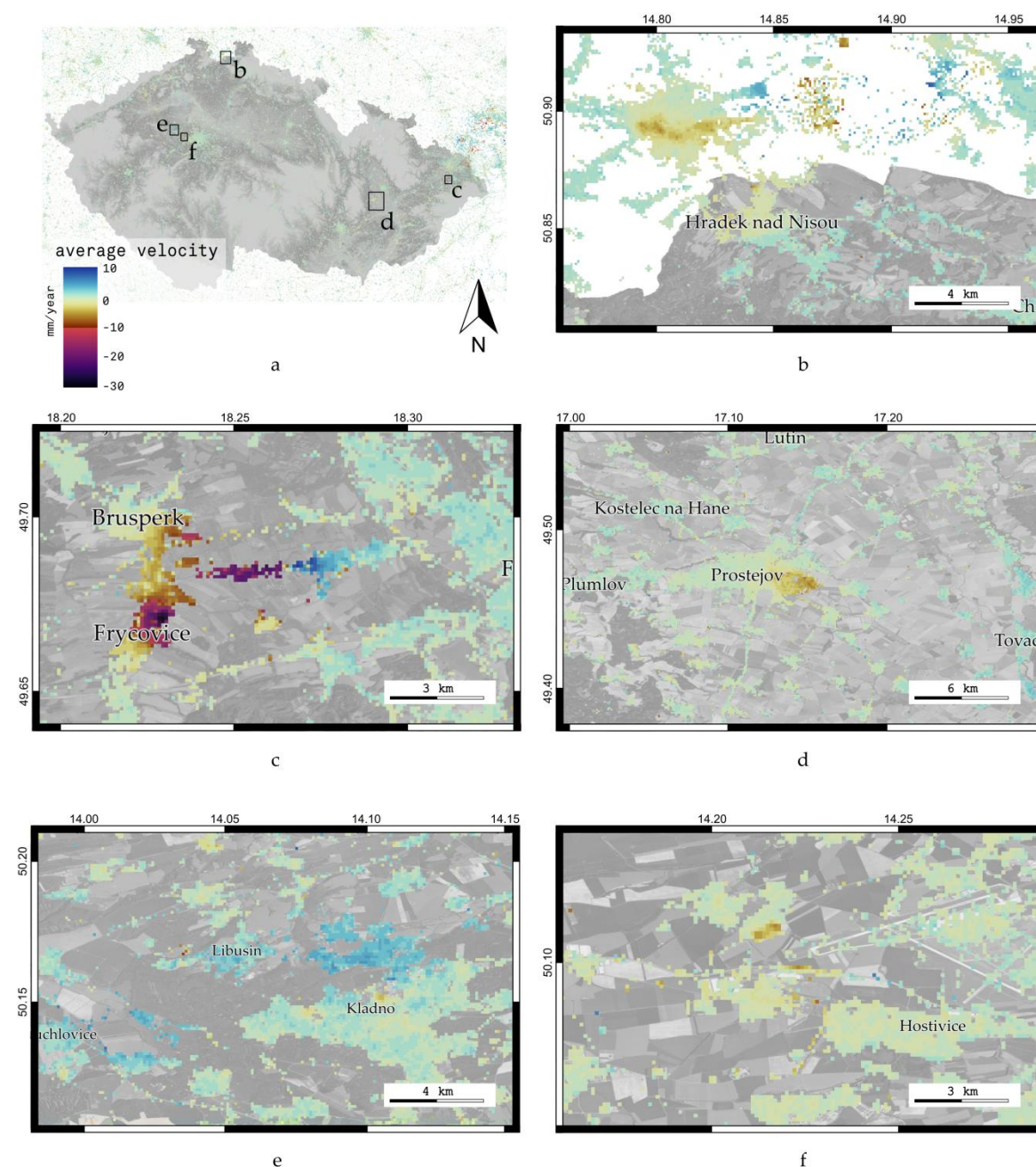


**Figure 7.** Nation-wide STAMPS PS processing output over Czechia, using IT4S1 system. Letters S, O indicate areas of Sokolov (Fig. 4) and Ostrava (Fig. 5).

As it can be observed from Fig. 7, there are only few (urban) areas in Czechia demonstrating a linear trend of displacements. These are or should be subject to a separate investigation. The areas denoted S, O identify terrain deformation over previously presented locations - the open pit mine area in Sokolov surroundings (Fig. 4) and a subsidence related to black coal mining in the Ostrava-Karvina region, covered by examples in Fig. 5 and Fig. 6.

We provide several other examples in Fig. 8, by zooming into the map. These are capturing following deformations:

- deformations in the surroundings of an open pit mine near Polish Turów (Fig. 8b); subsidence of a German Zittau and the border area between Czechia and Germany is observed as well,
- subsidence and uplift detected over a black coal mine in Brusperk vicinity (Fig. 8c),
- settlement of an industrial area in Prostějov city (Fig. 8d),
- uplift in the surroundings of Kladno city (Fig. 8e),
- local subsidence or a building settlement in the surroundings of Hostivice (Fig. 8f).





**Figure 8.** Examples of detected terrain deformations within the full-scale nation-wide PS processing (Sentinel-1 data from 10/2014–09/2017, processed by STAMPS PS through IT4S1 system): **a** map overview localising zoomed-in areas in this figure, **b** subsidence in the surroundings of Turów, **c** subsidence and uplift due to mining activities in Brusperk area, **d** settlement in industrial zone of Prostějov, **e** uplift in the surroundings of Kladno, **f** local subsidence near to Hostivice.

#### 4. Discussion

Using the framework of continuously updating *SLC<sub>c</sub>* images ready for advanced processing, the system leads not only to generate (semi-)annual maps of terrain and urban displacements over the whole Czech country but also towards an innovative system for an early identification of risks due to identified displacements, *e.g.* in cases of critical infrastructure. Data from newly arrived images can be extracted directly for the selected PS or SB points where the system would perform an additional update analysis. Innovative static or dynamic InSAR-based outputs can be included to risk management systems but can be used also by local authorities, or scientific communities (*e.g.* in the field of geology or geodesy). Further development of the system would allow for a more reliable detection of a slope motion under a vegetation cover, once long-wavelength SAR data become available, as expected from upcoming NISAR mission [35].

The modified ISCE-based coregistration into the form of *SLC<sub>c</sub>* images may be still affected by various biases, including variation in atmospheric delays on pixel level per image. We were notified that a slight misalignment especially in slant range direction may cause a shift in a sub-pixel level, that may result in a decreased accuracy of full-resolution PS InSAR estimations performed afterwards (e-mail communication with Dr. P. Agram, May 2018). We did not, however, experience significant noise in the dataset. Comparison of IT4S1 system with other existing solution, SARPROZ [3], proved its comparable accuracy in case of a Spanish Costa del Sol area [36]. Similarly, we demonstrate quality of the processing outputs in the search of topographic residuals in a mountainous area in Spain, and within a coherence analysis of SARPROZ and IT4S1 (STAMPS and SALSIT) in [17]. With the confidence on the phase signal quality in *SLC<sub>c</sub>* data, we have demonstrated the applicability of the system on infrastructure monitoring outside of Czechia, in cases of La Vinuela dam in Spain [24] or deforming terrain in El Salvador [37].

The IT4S1 system currently works only with a co-polarised Sentinel-1 data. Once the coregistering equations are solved, they can be applied to coregister also cross-polarised SLC data. The cross-polarised signal would be used for intensity/amplitude-based applications, as a detection of deforestation [38] or other forest/vegetation changes [39], *etc.* The amplitude exploitation would allow for other change detection applications of SAR data, such as monitoring soil moisture changes, identification of flooded areas, studying urban growth and other topics [40]. The system should include cross-polarisation data structures in its future version, aiming towards preparation for ingesting data from future satellite SAR missions, *e.g.* aforementioned NISAR.

##### 4.1 Computational Load

In order to perform the ESD correction in the *SLC<sub>c</sub>* generation phase, the system extracts all available bursts in a related swath overlapping Czechia within a current date, and registers them to already preprocessed reference bursts. The generation of one *SLC<sub>c</sub>* epoch is performed for approx. 18–20 bursts (per swath) at once. We use a 24-core computing node for this generation of *SLC<sub>c</sub>* data and we report an average rate of 2.2 minutes per burst (this includes some non-parallelised parts of the processing chain).

The whole Czechia is segmented by 352 burst units. The computational load for generation of *SLC<sub>c</sub>* burst images from all SLC data over Czechia is:

- until October 2017: 62,900 burst images; approx. 53,000 core-hours,
- October 2017 to December 2020: approx. 136,000 burst images; approx. 61,000 core-hours.

The IT4S1 approach expects monthly allocation of 1,700 core-hours for keeping the *SLC<sub>c</sub>* database over Czechia up-to-date.

Thanks to the pre-processed data, the MT-InSAR processing itself is a lower computational burden. We currently reach a PS output of a full burst within 24–48 core-hours using the adapted STAMPS PS MT-InSAR. Generation of SB results can take a larger amount of time, *e.g.* 48–72 core-hours per burst, or more. In theory, time series approaches that consider only temporal signature of the data stack would compute the solution in a couple of minutes from such dataset, *e.g.* a phase linking technique implemented in SARPROZ, or other tools.

A spatially unfiltered interferogram of one burst (combination of two *SLC<sub>c</sub>* images) is generated within 8 seconds. A monthly update of the MT-InSAR results (using up to 5 new images for 6-days revisit time of Sentinel-1) is expected to take around 5 minutes per burst, meaning up to approx. 1,400 core-hours monthly for the update of Czechia displacements in case of a potential nation-wide monitoring system.

#### 4.2 Current and Future Storage Needs for Czechia

Sentinel-1 data cover the whole Czechia from 9 tracks, yielding approx. 180 new images per month. One image contains 24 bursts (8 bursts per 3 swath units) covering approx. 90x20 km area each with its LOS direction pixel spacing of approx. 3x14 m [41] and is distributed in files of a size around 4.5 GB in its compressed form, *i.e.* approx. 200 MB/burst in the compressed form and around 550 MB uncompressed (including both co-polarised and cross-polarised image). For InSAR, only co-polarised images are needed. We store our generated *SLC<sub>c</sub>* burst images compressed to approx. 200 MB/burst.

In October 2017, 3,580 unique Sentinel-1 SLC zip files covering Czechia were stored in CollGS (~15.7 TB), while the expected number of images in December 2020 is 7,740 SLC files (~34 TB). The full dataset of *SLC<sub>c</sub>* images consisted of ~8 TB in October 2017, the expected amount in December 2020 is less than 21 TB. The current monthly data size increment for Czech bursts is ~360 GB/month.

### 5. Conclusions

The IT4S1 system is an HPC-deployable solution based on open-source technologies. While common HPC approaches of utilising Sentinel-1 images for InSAR start their processing chain from either original SLC data or raw non-coregistered data [42], the IT4S1 system allows a faster and more flexible multitemporal processing thanks to availability of specifically pre-processed *SLC<sub>c</sub>* ARD images, based on ISCE/ISCE2 [6]. As these ARD already do not contain most of the phase induced by topography, Earth curvature *etc.*, there is no need to simulate and remove the topography and orbital ramp components per each generated interferogram, as typically being done in other InSAR-oriented systems, *e.g.* LiCSAR [15]. The *SLC<sub>c</sub>* ARD proved its quality and effectivity to be used for a typical InSAR processing towards deformation monitoring.

The presented IT4S1 solution, available at <https://code.it4i.cz/laz048/it4s1>, allows an easy and effective inclusion of various MT-InSAR algorithms. The system is already capable of PS, SB through STAMPS [20] and SALSIT [17], as well as (experimentally) NSBAS time series through LiCSBAS [27]. The *SLC<sub>c</sub>* approach is suitable for inclusion of other advanced techniques, such as a phase linking (*e.g.* SARPROZ [3, 43]), or more experimental SqueeSAR [44] or a phase triangulation stacking [45].

The *SLC<sub>c</sub>* ARD data can be generated using SAR processing tools that allow computation of range pixel offsets. A further investigation may confirm whether the complex ESD operation can be substituted by a simple burst-based removal of an overall 2-D polynomial interferometric ramp. The ESD correction may be also fully skipped for the burst-wise processing, as the high accuracy of Sentinel-1 precise orbital data should satisfy needs of a purely geometric registration by simulating antenna steering to model the azimuthal ramp [46, 47].

We have presented the processing outputs of our customised STAMPS PS approach on all preprocessed bursts covering Czechia until the autumn 2017. The large spatial coverage of Sentinel-1 InSAR brings advantages over in-situ technologies, such as GNSS or other geodetic instruments, yet the character of MT-InSAR processing demands a careful interpretation of its output estimations. The system and its results can find application for national geologic, urban planning, forestry or a risk management applications, as *e.g.* Floreon+ developed by IT4Innovations to support local risk

management [48]. The IT4S1 can be further developed in this framework, in a direction towards an automatic InSAR-based system that would allow providing an early warning by detecting displacements around critical AOIs, based on change analyses in interferometric time series. Although Floreon+ system offers a web GIS environment, we keep the current outputs available only in its simplified web map: [https://espritoccz.github.io/espigis/mapa\\_insarcz.htm](https://espritoccz.github.io/espigis/mapa_insarcz.htm).

**Author Contributions:** Writing—original draft preparation, conceptualization, methodology and software M.L.; software M.L., I.H., P.G., E.H., F.D.; funding acquisition and resources, J.M., Z.S.

**Funding:** This work was supported by The Ministry of Education, Youth and Sports from the National Programme of Sustainability (NPU II) project „IT4Innovations excellence in science - LQ1602“ and from the Large Infrastructures for Research, Experimental Development and Innovations project “IT4Innovations National Supercomputing Center – LM2015070”.

**Acknowledgments:** Access to computing and storage facilities owned by parties and projects contributing to the National Grid Infrastructure MetaCentrum, provided under the programme "Projects of Large Infrastructure for Research, Development, and Innovations" (LM2010005), is greatly appreciated. The author wishes to thank supportive colleagues from IT4Innovations and CESNET. The work is based on open-source technologies, the main processors being ISCE/ISCE2 by NASA/JPL and STAMPS-MTI. The LiCSInfo metadata database of Sentinel-1 images has been kindly offered by University of Leeds team in 2016.

**Conflicts of Interest:** The authors declare no conflict of interest.

## References

1. Ferretti, A.; Prati, C.; Rocca, F. Nonlinear subsidence rate estimation using Permanent Scatterers in differential SAR interferometry, *IEEE Trans. Geos. Rem. Sens.* **2000**, *38* (5), 2202–2212, doi: 10.1109/36.868878.
2. Berardino, P.; Fornaro, G.; Lanari, R.; Sansosti, E. A new algorithm for surface deformation monitoring based on small baseline differential SAR interferograms, *IEEE Trans. Geosci. Remote Sens.* **2002**, *40*, 2375–2383.
3. Perissin, D.; Wang, T. Repeat-pass SAR Interferometry with Partially Coherent Targets, *IEEE Transactions on Geoscience and Remote Sensing* **2012**, *50* (1), 271–280.
4. De Zan, F.; Guarnieri, A.M. TOPSAR: Terrain observation by progressive scans, *IEEE Trans. Geosci. Remote Sensing* **2006**, *44*, 2352–2360.
5. Yague-Martinez, N.; Prats-Iraola, P.; Gonzalez, F.; Bricic, R.; Shau, R.; Geudtner, D.; Eineder, M.; Bamler, R. Interferometric Processing of Sentinel-1 TOPS Data, *IEEE Trans. on Geos. and Rem. Sens.* **2016**, *54*, 1–15, doi: 10.1109/TGRS.2015.2497902.
6. Zebker, H.A.; Hensley, S.; Shanker, P.; Wortham, C. Geodetically Accurate InSAR Data Processor. *IEEE Trans. Geosci. Remote. Sens.* **2010**, *48*, 4309–4321.
7. Lazecky, M.; Bakon, M.; Hlavacova, I.; Sousa, J.J.; Real, N.; Perissin, D.; Patricio, G. Bridge Displacements Monitoring using Space-Borne SAR Interferometry, *IEEE Jour. of Sel. Top. in App. Earth Obs. and Rem. Sens. (J-STARS)* **2017**, *PP* (99), 1, doi: 10.1109/JSTARS.2016.2587778.
8. Lazecky, M.; Bakon, M.; Perissin, D.; Papco, J.; Gamse, S. Analysis of dam displacements by spaceborne SAR interferometry, In Proceedings of ICOLD 2017, Prague, 3–7 July 2017.
9. Comut, F.C.; Ustun, A.; Lazecky, M.; Perissin, D. Capability of detecting rapid subsidence with Cosmo SkyMed and Sentinel-1 dataset over Konya city, In Proceedings of ESA Living Planet Symposium, ESA SP740, Prague, 9–13 May 2016.
10. Jiráňková E.; Lazecký M. Specifics in the formation of substituent through in the Karvina part of the Ostrava-Karvina coalfield with the use radar interferometry, *Acta Geodyn. Geomater.* **2016**, *13* (3), 263–269, doi:10.13168/AGG.2016.0008.
11. Lazecky, M.; Jirankova, E.; Kadlecik, P. Multitemporal monitoring of Karvina subsidence trough using Sentinel-1 and TerraSAR-X interferometry, *Acta Geodyn. Geomater.* **2017**, *14*, 53–59, doi: 10.13168/AGG.2016.0027.
12. Lazecky, M.; Comut, F.C.; Nikolaeva, E.; Bakon, M.; Papco, J.; Ruiz-Armenteros, A.M.; Qin, Y.; Sousa, J.J.; Ondrejka, P. Potential of Sentinel-1A for nation-wide routine updates of active landslide maps, *Int. Arch. Photogramm. Remote Sens. Spatial Inf. Sci.* **2016**, *XLI* (B7), 775–781.



13. Lazecky, M.; Hlavacova, I.; Kocich, D., Czech System for exploitation of land dynamics using Copernicus Sentinel-1 data. In Proceedings of GIS Ostrava 2017, Ostrava, 22–24 Mar 2017, doi:10.1007/978-3-319-61297-3\_20.
14. Lazecky, M. System for Automatized Sentinel-1 Interferometric Monitoring. In Proceedings of the 2017 conference on Big Data from Space, Toulouse, France, 28–30 November 2017, 161–165.
15. Lazecký, M.; Spaans, K.; González, P.J.; Maghsoudi, Y.; Morishita, Y.; Albino, F.; Elliott, J.; Greenall, N.; Hatton, E.; Hooper, A.; Juncu, D.; McDougall, A.; Walters, R.J.; Watson, C.S.; Weiss, J.R.; Wright, T.J. LiCSAR: An Automatic InSAR Tool for Measuring and Monitoring Tectonic and Volcanic Activity. *Remote Sens.* **2020**, *12*, 2430, doi:10.3390/rs12152430.
16. Farr, T.G.; Rosen, P.A.; Caro, E.; Crippen, R.; Duren, R.; Hensley, S.; Kobrick, M.; Paller, M.; Rodriguez, E.; Roth, L.; et al. The shuttle radar topography mission. *Rev. Geophys.* **2007**, *45*, 1–33, doi:10.1029/2005RG000183.
17. Lazecky M.; Hlavacova, I.; Martinovic J., Ruiz-Armenteros A.M. Accuracy of Sentinel-1 interferometry monitoring system based on topography-free phase images, *Procedia Computer Science* **2018**, *138*, 310–317, doi:10.1016/j.procs.2018.10.044.
18. ISCE Team, Overview of S1A TOPS processing with ISCE–topsApp.py. Available online: [http://etdedata.gein.noaa.gov/ISCE\\_UNAVCO/topsApp\\_ISCE\\_20160418.pdf](http://etdedata.gein.noaa.gov/ISCE_UNAVCO/topsApp_ISCE_20160418.pdf) (accessed on 31st July 2020).
19. Qin, Y.; Perissin, D.; Bai, J. Investigations on the coregistration of Sentinel-1 TOPS with the conventional cross-correlation technique. *Remote Sens.* **2018**, *10*, 2072–2492, doi:10.3390/rs10091405.
20. Hooper, A.; A multi-temporal InSAR method incorporating both persistent scatterer and small baseline approaches, *Geophysical Research Letters* **2008**, *35*, 1–5, doi:10.1029/2008GL034654.
21. Hooper, A.; Bekaert, D.; Hussain, E.; Spaans, K.; Arikaan, M., StaMPS/MTI Manual. Available online: [https://github.com/dbekaert/StaMPS/blob/master/Manual/StaMPS\\_Manual.pdf](https://github.com/dbekaert/StaMPS/blob/master/Manual/StaMPS_Manual.pdf) (accessed on 20 February 2020).
22. Colesanti, C.; Ferretti, A.; Novali, F.; Prati, C.; Rocca, F. SAR Monitoring of Progressive And Seasonal Ground Deformation Using the Permanent Scatterers Technique. *IEEE Trans. on Geoscience and Remote Sensing* **2003**, *41* (7), 1685–1701.
23. Tange, O. GNU Parallel - The Command-Line Power Tool. ;login: *The USENIX Magazine* **2011**, February 2011, 42–47.
24. Ruiz-Armenteros, A.M.; Lazecky, M.; Hlavacova, I.; Bakon, M.; Delgado, J.M.; Sousa, J.J.; Lamas-Fernández, F.; Marchamalo, M.; Caro-Cuenca, M.; Papco, J.; Perissin, D. Deformation monitoring of dam infrastructures via spaceborne MT-InSAR: The case of La Viñuela (Málaga, southern Spain). *Procedia Computer Science* **2018**, *138*, 346–353, doi:10.1016/j.procs.2018.10.049.
25. Kampes, B.; Hanssen, R.F.; Perski, Z. Radar Interferometry with Public Domain Tools. In Proceedings of the Fringe 2003, Frascati, Italy, 1–5 December 2003.
26. Lazecky, M. Identification of active slope motion in Czech environment using Sentinel-1 interferometry, *Springer Lecture Notes in Geoinformation and Cartography* **2018**, *1*, 1–7.
27. Morishita, Y.; Lazecky, M.; Wright, T.J.; Weiss, J.R.; Elliott, J.R.; Hooper, A. LiCSBAS: An Open-Source InSAR Time Series Analysis Package Integrated with the LiCSAR Automated Sentinel-1 InSAR Processor. *Remote Sensing* **2020**, *12*, 424, doi: 10.3390/rs12030424.
28. Chen, C.W.; Zebker, H.A. Phase unwrapping for large SAR interferograms: statistical segmentation and generalized network models. *IEEE Transactions on Geoscience and Remote Sensing* **2002**, *40*, 1709–1719, doi:10.1109/TGRS.2002.802453.
29. Schmidt, D.A.; Bürgmann, R. Time-dependent land uplift and subsidence in the Santa Clara valley, California, from a large interferometric synthetic aperture radar data set. *J. Geophys. Res. Solid Earth* **2003**, *108*, 1–13, doi:10.1029/2002JB002267.
30. GDAL/OGR Geospatial Data Abstraction software Library. Available online: <https://gdal.org> (accessed on 31 July 2020).
31. giSAR (Quantum GIS toolbox). Available online: <https://github.com/espiritocz/giSAR> (accessed on 20 February 2020).
32. Rapant, P.; Struhar, J.; Lazecky, M. Radar Interferometry as a Comprehensive Tool for Monitoring the Fault Activity in the Vicinity of Underground Gas Storage Facilities, *Remote Sens.* **2020**, *12* (271), 18, doi:10.3390/rs120200271.

33. Wright, T.J.; Parsons, B.E.; Lu, Z. Toward mapping surface deformation in three dimensions using InSAR. *Geophys. Res. Lett.* **2004**, *31*, 1–5, doi:10.1029/2003gl018827.
34. Ansari, H.; De Zan, F.; Parizzi, A. Study of Systematic Bias in Measuring Surface Deformation With SAR Interferometry, *IEEE Transactions on Geoscience and Remote Sensing* **2020**, *000*, 1–17, doi:10.1109/TGRS.2020.3003421.
35. Overview of NISAR Mission and Airborne L & S SAR. Available online: [https://vedas.sac.gov.in/vedas/downloads/ertd/SAR/L\\_1.pdf](https://vedas.sac.gov.in/vedas/downloads/ertd/SAR/L_1.pdf) (accessed on 25 May 2020).
36. Ruiz-Armenteros, A. M.; Lazecky, M.; Ruiz-Constán, A.; Bakon, M.; Delgado, J. M.; Sousa, J. J.; Galindo-Zaldívar, J.; de Galdeano, C. S.; Caro-Cuenca, M.; Martos-Rosillo, S.; Jiménez-Gavilán, P.; Perissin, D. Monitoring continuous subsidence in the Costa del Sol (Málaga province, southern Spanish coast) using ERS-1/2, Envisat, and Sentinel-1A/B SAR interferometry, *Procedia Computer Science* **2018**, *138*, 354–361, doi:10.1016/j.procs.2018.10.050.
37. Chavez Hernandez, J. A.; Lazecky, M.; Sebesta, J.; Bakon, M. Relation between surface dynamics and remote sensor InSAR results over the Metropolitan Area of San Salvador. *Natural Hazards* **2020**, *0*, 1–22, doi:10.1007/s11069-020-04150-1.
38. Lazecky, M.; Lhota, S.; Wenglarzyova, P.; Joshi, N., Evaluation of forest loss in Balikpapan Bay in the end of 2015 based on Sentinel-1A polarimetric analysis. In Proceedings of IGRSM 2018, Kuala Lumpur, Malaysia, 24–25 Apr 2018, doi:10.1088/1755-1315/169/1/012026.
39. Lazecky, M.; Wadhwa, S.; Mlcousek, M. Simple method for identification of forest windthrows from Sentinel-1 SAR data incorporating PCA. In Proceedings of CENTERIS SARWatch 2020, Vilamoura, Portugal, 21–23 October 2020, accepted for publication.
40. Nielsen, A. A.; Canty, M. J.; Skriver, H.; Conradsen, K. Change detection in multi-temporal dual polarization Sentinel-1 data. In Proceedings of 2017 IEEE International Geoscience and Remote Sensing Symposium (IGARSS), Fort Worth, Texas, 23–28 July 2017, doi: 10.1109/IGARSS.2017.8127854.
41. Bourbigot, M.; Johnsen, H.; Piantanida, R.; Hajduch, G.; Poullaouec, J. Sentinel-1 Product Definition, Technical Report Ref. S1-RS-MDA-52-7440. Available online: <https://sentinel.esa.int/documents/247904/1877131/Sentinel-1-Product-Definition> (accessed 20 Feb 2020)
42. De Luca, C.; Zinno, I.; Manunta, M.; Lanari, R.; Casu, F. Large areas surface deformation analysis through a cloud computing P-SBAS approach for massive processing of DInSAR time series, *Remote Sensing of Environment* **2017**, *202*, 3–17, doi: 10.1016/j.rse.2017.05.022.
43. Bakon, M.; Czikhhardt, R.; Papco, J.; Barlak, J.; Rovnak, M.; Adamisin, P.; Perissin, D. remotIO: A Sentinel-1 Multi-Temporal InSAR Infrastructure Monitoring Service with Automatic Updates and Data Mining Capabilities. *Remote Sens.* **2020**, *12*, 1892, doi:10.3390/rs12111892.
44. Ferretti, A.; Fumagalli, A.; Novali, F.; Prati, C.; Rocca, F.; Rucci, A. A New Algorithm for Processing Interferometric Data-Stacks: SqueeSAR. *IEEE Trans. Geosci. Remote. Sens.* **2011**, *49*, 3460–3470, doi:10.1109/TGRS.2011.2124465.
45. Samiei-Esfahany, S.; Hanssen, R. F. New algorithm for InSAR stack phase triangulation using integer least squares estimation," 2013 IEEE International Geoscience and Remote Sensing Symposium - IGARSS, Melbourne, VIC, 2013, pp. 884–887, doi: 10.1109/IGARSS.2013.6721301.
46. Podhoranyi, M.; P. Veteska, P.; Szturcova, D.; Vojacek, L.; Portero, A. A web-based modelling and monitoring system based on coupling environmental models and hydrological-related data. *Journal of Communications* **2017**, *12* (6), 340–346, doi: 10.12720/jcm.12.6.340-346.
47. Sandwell, D.; Mellors, R.; Tong, X.; Xu, X.; Wei, M.; Wessel, P. GMTSAR An InSAR Processing System Based on Generic Mapping Tools. Available online: [https://topex.ucsd.edu/gmtsar/tar/GMTSAR\\_2ND\\_TEX.pdf](https://topex.ucsd.edu/gmtsar/tar/GMTSAR_2ND_TEX.pdf) (accessed on 31 July 2020).
48. Miranda, N. Definition of the TOPS SLC deramping function for products generated by the S-1 IPF, Tech. rep. Available online: [https://earth.esa.int/documents/247904/1653442/Sentinel-1-TOPS-SLC\\_Deramping](https://earth.esa.int/documents/247904/1653442/Sentinel-1-TOPS-SLC_Deramping) (accessed on 31th July 2020).