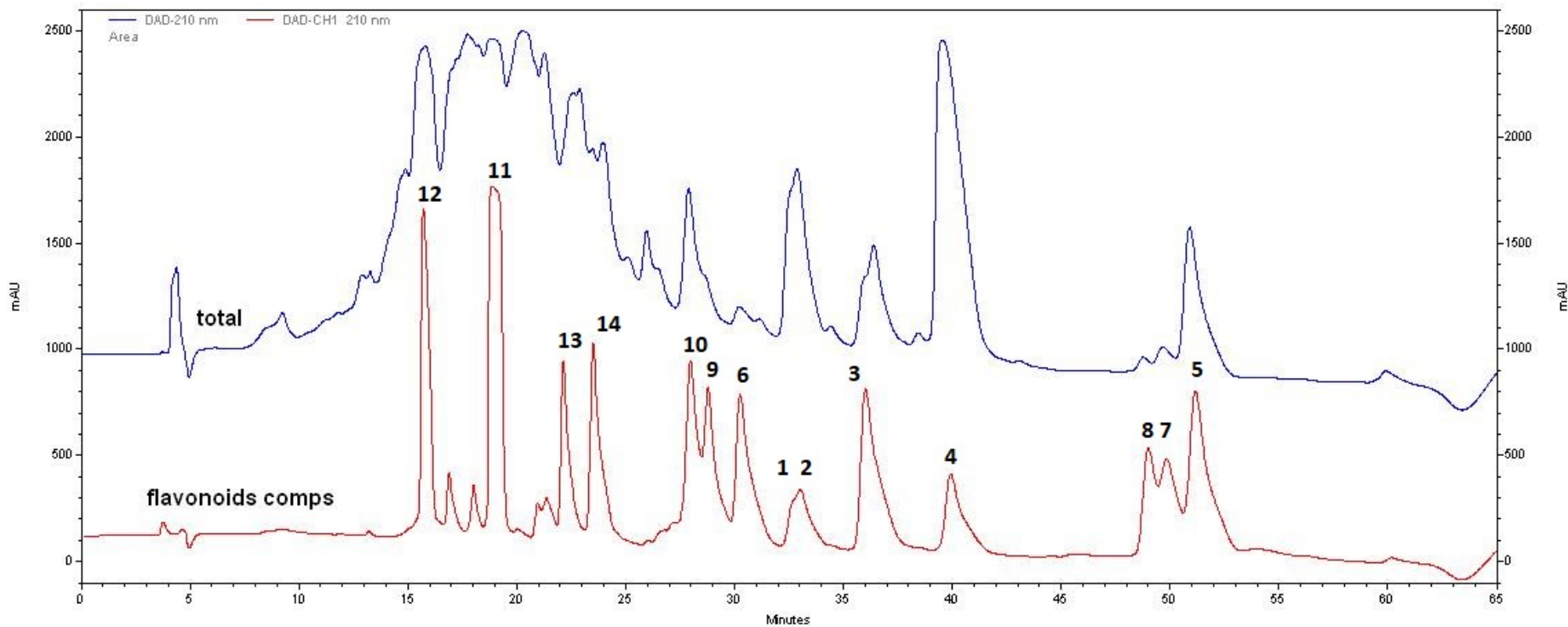


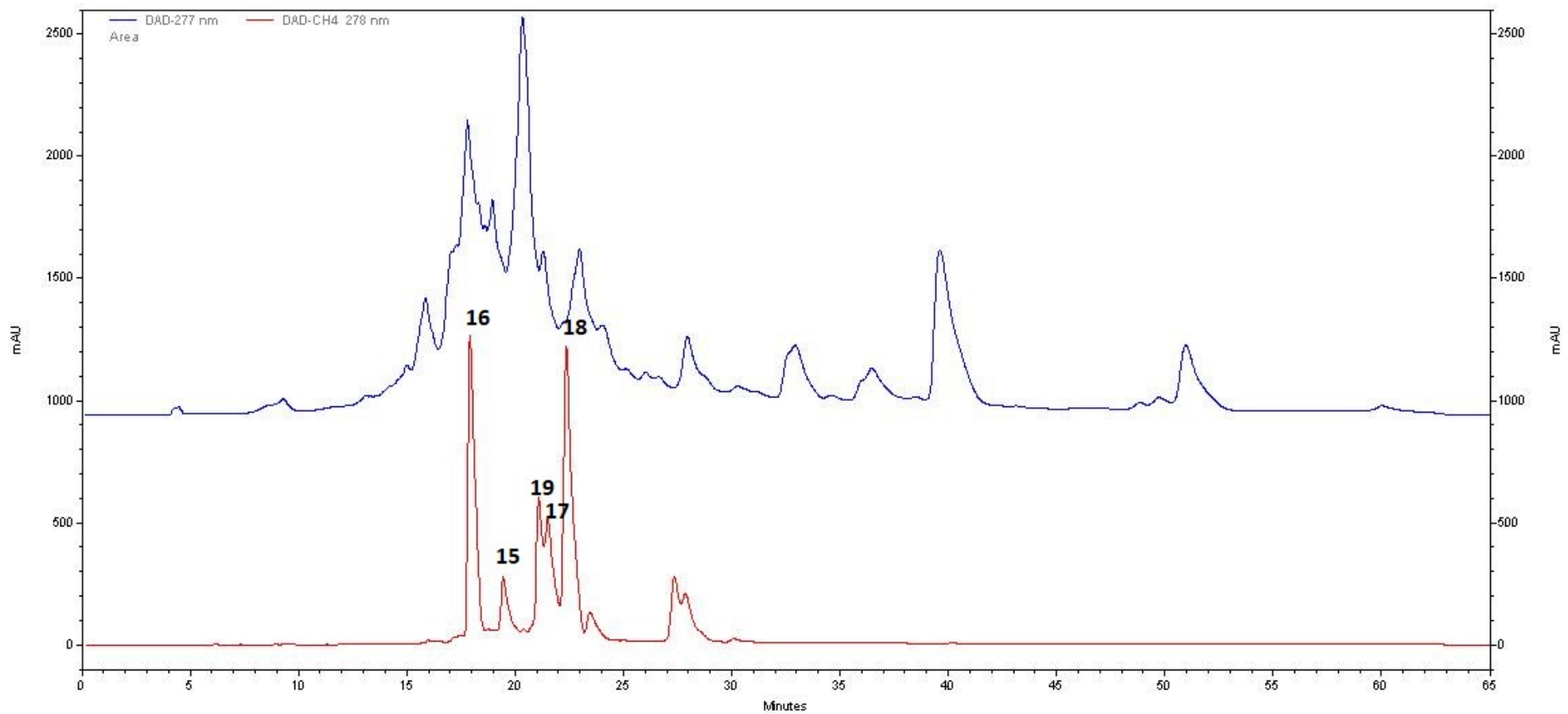
**Figure S1: An HPLC-DAD profile of the ethyl acetate extract of sugar maple leaves and the isolates compounds**

HPLC Conditions

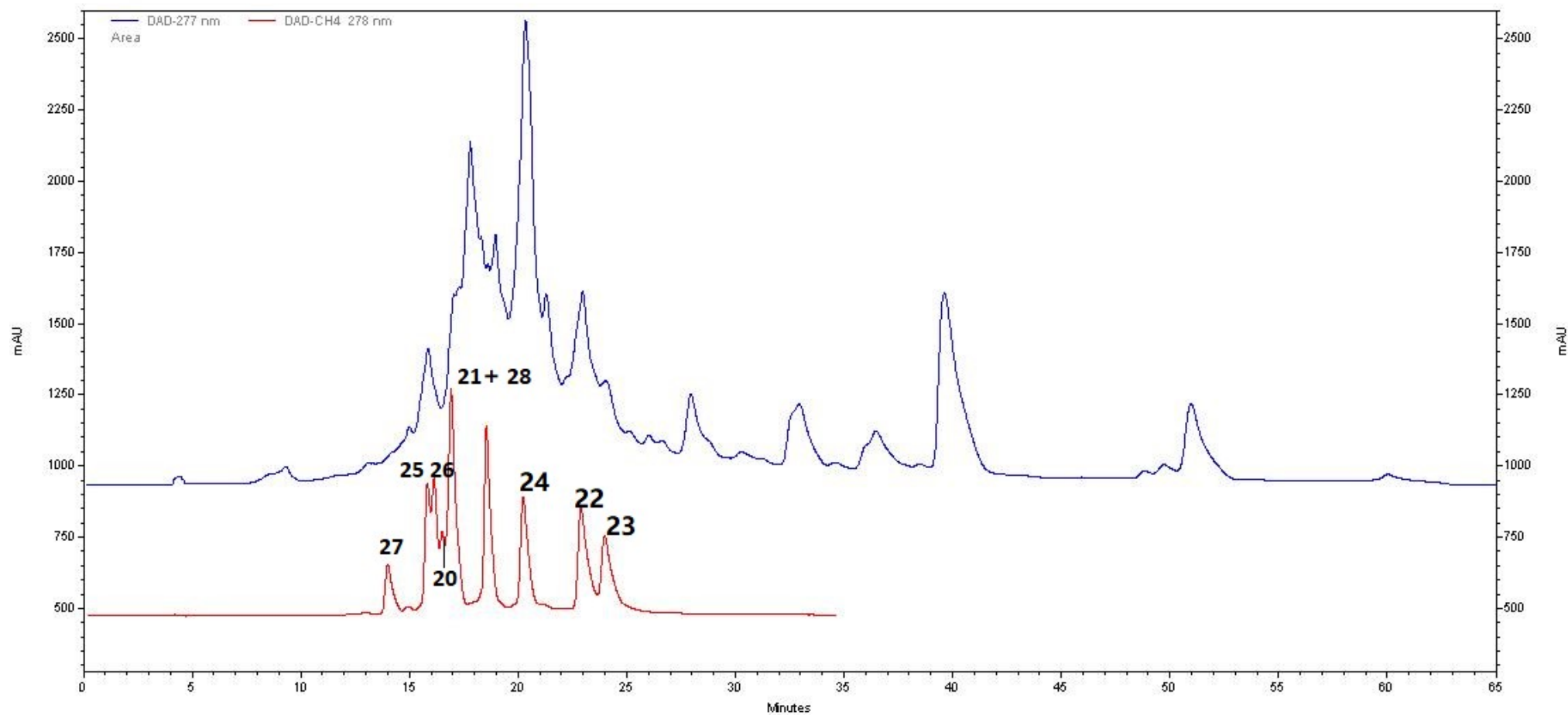
Time (min)	A (0.1%TFA in Water)	B(Methanol)	Flow rate (mL/min)
0	85	15	0.75
12	60	40	0.75
30	55	45	0.75
45	50	50	0.75
55	44	56	0.75
56	85	15	0.75
65	85	15	0.75



**Flavonoids Profile (1-14)**



Quinic acid derivatives profile (15-19)



Galloyl tannins and other phenolic acids profile (20-28)

**Figure S2: Extraction and isolation flow chart of compounds 1–28 from sugar maple leaves.**

