

*Article*

# On-Farm Evaluation of Prescription Map-Based Variable Rate Application of Pesticides in Vineyards

Javier Campos, Montserrat Gallart, Jordi Llop, Paula Ortega, Ramon Salcedo, and Emilio Gil\*

Universitat Politècnica de Catalunya, Department of Agro Food Engineering and Biotechnology, Esteve Terradas, 8, 08860 Castelldefels, Spain; javier.campos@upc.edu (J.C.); montserrat.gallart@upc.edu (M.G.); jordi.llop-casamada@upc.edu (J.L.); paula.ortega@upc.edu (P.O.); ramon.salcedo@upc.edu (R.S.)

\*Correspondence: emilio.gil@upc.edu; Tel.: +34 93 5521099 (E.G.)

**Abstract:** Canopy characteristics are crucial for accurately and safely determining the pesticide quantity and volume of water used for spray applications in vineyards. The inevitably high degree of intra-plot variability makes it difficult to develop a global solution for the optimal volume application rate. Here, the design procedure of, and the results obtained from, a variable rate application (VRA) sprayer are presented. Prescription maps were generated after detailed canopy characterization, using a multispectral camera embedded on an unmanned aerial vehicle, throughout the entire growing season in Torrelavit (Barcelona) in four vineyard plots of Chardonnay (2.35 ha), Merlot (2.97 ha), and Cabernet Sauvignon (4.67 ha). The maps were obtained by merging multispectral images with information provided by DOSAVIÑA®, a decision support system, to determine the optimal volume rate. They were then uploaded to the VRA prototype, obtaining actual variable application maps after the application processes were complete. The prototype had an adequate spray distribution quality and exhibited similar results in terms of biological efficacy on powdery mildew compared to conventional (and constant) application volumes. The VRA results demonstrated an accurate and reasonable pesticide distribution, with potential for reduced disease damage even in cases with reduced amounts of plant protection products and water.

**Keywords:** vineyard, pesticide application, variable rate application, unmanned aerial vehicle

## 1. Introduction

Pesticide spray application is one of the most important factors that influences all economic, environmental, and quality-related aspects of worldwide vineyard operations. Vineyards, with their grape-bearing vines and their relationship with wine production, are one of the crop-types of focus among the recently named “specialty crops”. Several challenges exist when considering improvements in the application process. The Mediterranean zone in particular requires further training and education, taking into account its specific characteristics.

The application of pesticides requires accuracy, as imprecise or excessive use can lead to serious problems such as environmental pollution, traces of pesticides in food, and health issues in humans; both workers and bystanders [1]. During the application process, risk, as a function of pesticide dose and harm to sensitive non-target areas, is related to (a) the spraying efficiency and (b) the amount of plant protection products (PPPs) used during the distribution process across the entire canopy. For orchard and vineyard applications, however, the various methods used to determine the most suitable amount of PPP and the corresponding application volume rate are often difficult to understand [2].

It is suggested that accurately determining the spray rate based on the canopy structure can improve the quality of pesticide application, resulting in better pest/disease control and reduced risk of contamination. This could also lead to reduced amounts of pesticide used, which brings consequential economic, environmental, and social benefits. However, not all 3D crops have the same structure and uniformity, and in some cases, it is difficult to characterize the geometric parameters of the intended target. Moreover, canopy characterization could vary from very simple measurements of the main structural parameters (e.g., canopy height, canopy width) down to the most sophisticated, detailed aspects (e.g., leaf area density, porosity, leaf area index). A significant amount of previous research has demonstrated the clear influence of the canopy structure and dimensions on the success of the spray application process [3-9]. These studies have established a clear necessity to determine the optimal amount of pesticide to be used based on the canopy characteristics, as opposed to determining the amount by simply quantifying the ground surface area.

Accurate canopy characterization is often linked with the promising concept of variable rate pesticide application. Assuming that the objective is to maintain a constant application rate per unit of canopy, developments regarding canopy measurement methods have been linked with research into modified sprayers. Using these, various spray parameters (working pressure, nozzle flow rate, number of nozzles, etc.) can be modified according to the canopy characteristics, while maintaining a constant application rate per unit of canopy [10-12].

Canopy characterization then becomes a crucial aspect within site-specific management strategies. In particular, when georeferenced information regarding the canopy structure and variability at the field scale is required [13], the use of non-destructive remote sensing technologies becomes a promising option. These technologies make rapid assessment of large areas possible [14,15]. Unmanned Aerial Vehicles (UAVs) have been widely utilized to carry remote sensing devices due their versatility, flexibility regarding flight scheduling and affordable management. Using this technology, spatial information linked, both directly and indirectly, with canopy characteristics or information about designed areas can be recorded in a practical and efficient way. Examples of this information include water status [16], disease detection [17] and canopy characterization [18-21]. De Castro et al. developed a fully automatic process for vineyard canopy characterization [13], which self-adapts to varying crop conditions. This represents an important improvement in the canopy characterization process, generating a time efficient, reliable, and accurate method, in addition to avoiding potential errors inherent to the manual process.

Recent research has demonstrated interest in the use of UAVs for canopy characterization and the potential improvements to the application process considering the intra-parcel variability [13,22]. This inherent variability, especially in large parcel situations, has led to increased interest in the development of advanced sprayers that could modify the spray application parameters in order to adapt the amount of PPP to the canopy structure. The European Directive on Sustainable Use of Pesticides highlighted this as an important step in reducing the risk of pesticide use [23], through facilitating a reduction in the applied dose per hectare, improving the deposition quality and controlling the environmental contamination risk.

Benefits of the implementation of variable application rate based on the intra-parcel variability have been demonstrated, not only by the potential reduction of applied PPP, but also for the more rational and logical distribution of the required dose, considering the pest/disease pressure and its negative effects on the crop development [14].

Vogel et al. evaluated a modified conventional boom sprayer for variable application of herbicide based on prescription maps [24]. The system was capable of combating weeds of corn and soybean crops. Furthermore, Michaud and coworkers developed a variable application prototype based on maps [25], obtained from aerial spectral images, to combat weeds in a cranberry crop. While variable rate application technology based on prescription maps is widely used in field crops, it is not used in

3D crops. For this reason, this research aims to develop a variable rate application (VRA) system, for vineyard sprayers, based on canopy vigor maps obtained with remote sensors.

Applying the latest technologies in crop protection process improvements to vineyards, arguably one of the most specialty crops in the Mediterranean zone, could massively benefit from this important and specific agriculture. Vineyards have been identified as agricultures with one of the lowest rates of adoption or implementation of precision farming, with a primary reason being the low educational level of their farmers. Research progress in this topic, and increased use of new technologies, will lead to a more uniform educational level across all EU zones. A similar trend has been witnessed in recent years in field crop spraying [26].

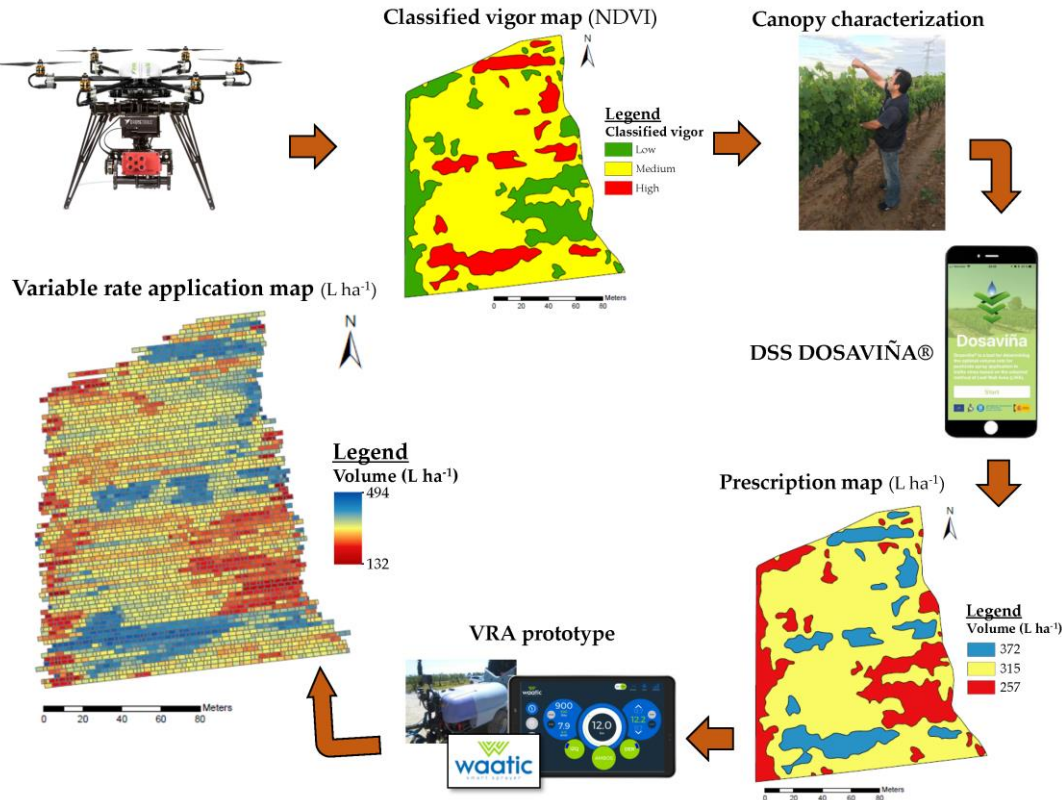
The main objective of this research was to develop, and evaluate, a holistic and automatic process for large-scale variable rate application in commercial parcels of vineyard, considering the intra-parcel variability. The specific objectives of this work were as follows:

- Development of canopy variable maps using information acquired by specific remote sensing.
- Establishment of a protocol to transform canopy maps into PPP prescription maps.
- Implementation of the corresponding hardware and software on a commercial sprayer to enable georeferenced variable spray application according the developed prescription maps.
- Quantification of the benefits of the developed prototype in the global context of spray application.

## 2. Materials and Methods

This section presents the entire process carried out to implement the variable application rate in real conditions. This process follows the method of Campos et al. [22] and is summarized in Figure 1. The following steps can be distinguished: 1) generation of canopy vigor map from UAV data; 2) generation of prescription maps for variable spray application based on canopy maps; 3) development of software and hardware to adapt a conventional sprayer into a Variable Rate Application (VRA) sprayer; and 4) generation of actual application rate map and monitoring of the results.

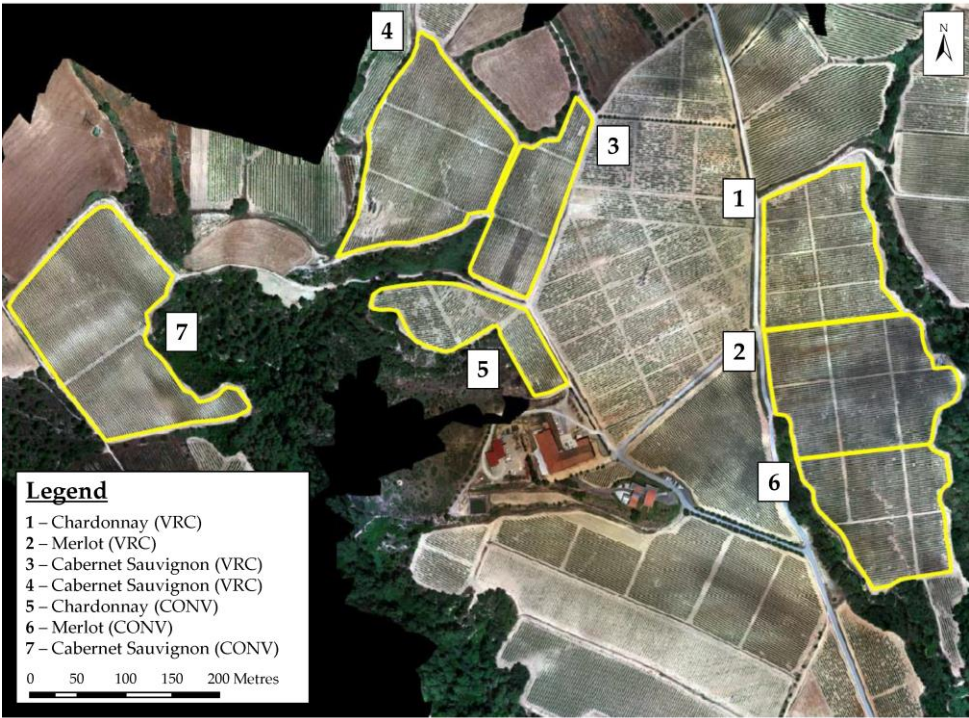
In order to assess the suitability of the developed VRA, parcels with conventional - and therefore constant - rate application were also included in this research and used as a reference.



**Figure 1:** Overview of the entire process used to implement the variable application rate in the field tests.

2.1. Experimental site

The trials were carried out on the Alt Penedès region (Torrelavid, Barcelona); an important wine production zone in the northeast of Spain. Seven different vineyards were selected, containing three representative varieties: Chardonnay, Merlot and Cabernet Sauvignon (Figure 2).



**Figure 2:** Orthophotomap of the experimental vineyard parcels.



All of the selected vineyards were trained in a trellis system; Double Royat with 1.2 m on the row and 2.2 m between rows. Four of the selected parcels were sprayed with VRA system and the remaining three were sprayed using a conventional sprayer (CONV). The main characteristics of the selected vineyards are shown in Table 1.

**Table 1.** Main characteristics of the vineyard parcels.

Parcel	Variety	Treatment	Area (ha)	X coord. (m)	Y coord. (m)	Reference system
1	Chardonnay	VRA	2.35	392,194	4,587,999	ETRS 89 UTM31
2	Merlot	VRA	2.97	392,234	4,587,843	
3	C. Sauvignon	VRA	1.53	391,856	4,588,055	
4	C. Sauvignon	VRA	3.14	391,744	4,588,107	
5	Chardonnay	CONV	1.33	391,794	4,587,929	
6	Merlot	CONV	2.49	392,269	4,587,700	
7	C. Sauvignon	CONV	3.84	391,361	4,587,908	

## 2.2. Generation of canopy vigor maps

In order to obtain a complete range of data across the entire season, the vineyards were overflown with an unmanned aerial vehicle (UAV) at three different canopy stages. The first flight was scheduled on May 9<sup>th</sup> 2018, at BBCH around 57–60 [27]; the second flight was executed on June 11<sup>st</sup> (BBCH 69–75); and the third flight was performed on July 2<sup>nd</sup> (BBCH 77–79). A DroneHEXA (Dronetools SL, Sevilla, Spain) was used for the data acquisition. The UAV was equipped with two batteries of 6000 mAh (88.8 Wh), with a maximum autonomy of 25 minutes. The drone was loaded with a multispectral camera (RedEDGE, Micasense, Seattle, USA) equipped with five spectral bands: 668 nm for Red with a bandwidth of 10 nm; 560 nm for Green with a bandwidth of 20 nm; 475 nm for Blue with a bandwidth of 20 nm; 717 nm for RedEdge with a bandwidth of 10 nm; and 840 nm for NIR with a bandwidth of 40 nm. Flights were conducted 95 m above ground level (AGL) at a cruise flight speed of 6 m s<sup>-1</sup>. Overlapping zones were adjusted at 80% in the sense of flight and 60% in the transverse sense.

In order to build the vigor map at each canopy stage, an orthophotomap with a ground sample distance (GSD) of 6.33 cm pixel<sup>-1</sup> was obtained from spectral images acquired with the camera. The orthophotomap was radiometrically calibrated using four grayscale standards (22, 32, 44 and 51% grayscale reflectance), placed in the field during the flight, to transform grayscale 12-bit digital numbers to reflectance values. This new data was used to calculate the normalized differential vegetation index (NDVI) [28] (Equation 1).

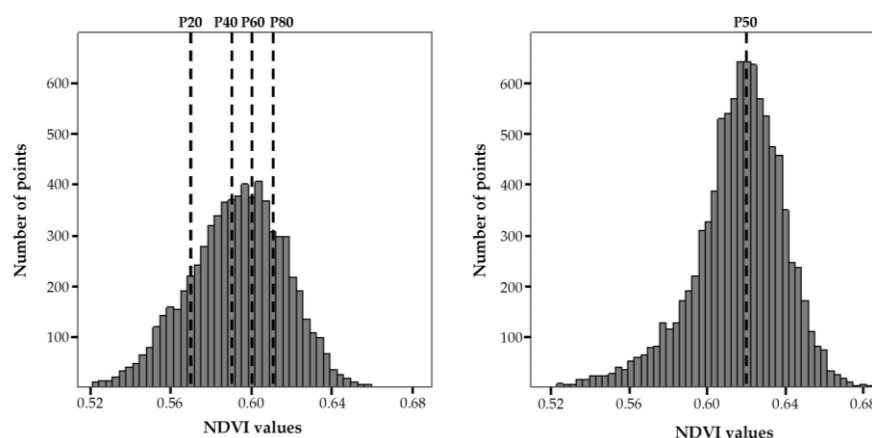
$$NDVI = \frac{NIR-RED}{NIR+RED} \quad (1)$$

where NDVI is normalized difference vegetation index; NIR is reflection in the near-infrared spectrum; and RED is reflection in the red range of the spectrum.

As the vineyards were planted out in rows, the image was segmented by an NDVI threshold in order to eliminate weeds, shadows and soil occurring between rows. Once the NDVI threshold was applied, an inverse distance weighting interpolation (IDW) was performed to generate a continuous NDVI map. Final processing consisted of value clustering in three NDVI levels, except in one case, where the clustering process only differentiated two NDVI levels due to the low intra-plot variability (Figure 3). In the case of three NDVI levels, NDVI values lower than P20 were categorized as low vigor, values between P20 and P80 correspond to medium vigor and values higher than P80 were clustered into high vigor. When only two NDVI levels were distinguished, NDVI values lower or

equal than P50 corresponded to low vigor and those values higher than P50 were categorized as high vigor.

Finally, the latter data was smoothed by performing neighbor median filtering to produce the classified vigor map. The process was executed using QGIS software [29].



**Figure 3:** Examples of histogram of the NDVI values for clustering in 3 (left) and 2 (right) vigor zones.

### 2.3. Generation of prescription maps for variable spray application

Once the vigor map was created, taking into account the different zones identified, it was located in the field using a GNSS receiver. In each determined vigor zone, 15 manual measurements of canopy height and width were randomly taken, using the decision support system (DSS) DOSAVIÑA® [2], to obtain a recommended volume rate. The values obtained using DOSAVIÑA® were introduced into the classified vigor map using QGIS software [29], in order to obtain the prescription map. This procedure was carried out for each pesticide application. Throughout the season, a total of seven pesticide applications were performed. This followed the experience and advice of the farmers' experience, who recommended the adequate time taking into account the risk of pest/damage.

### 2.4. Adapted sprayer for variable rate application

A conventional trailed cross-flow air sprayer (Saher Maquinaria Agrícola S.L., Barcelona, Spain), with a 1000 L tank and an axial fan of 800 mm diameter, commonly used in vineyard regions, was adapted for variable pesticide application based on the prescription maps (VRA). To achieve this, the sprayer was equipped with: a) one pressure sensor - GEMS 1200 series (Gems Sensors & Controls, Plainville, USA) - to allow working pressure to be monitored during the work; and b) an electronic controller - WAATIC (Estel Grup S.L., Barcelona, Spain) - including a GNSS receiver with a frequency of 1 Hz, a touchscreen and an automatic section controller. The purpose of the system was, firstly, to determine the position of the sprayer in the field as detected by the GNSS receiver. The system would then read the desired volume rate, based on the previously uploaded prescription map, and modify the working pressure using the electronic valve available in the conventional sprayer. This will then obtain the adjusted nozzle flow rate that is required to obtain the desired volume rate.

Prior to each spray application, the prescription map, in GeoJSON format, was loaded via USB to the touch screen that was installed in the sprayer. Working parameters, such as the number and type of nozzles, as well as the working width, were also introduced into the system.

### 2.5. Generation of actual variable rate application maps

Once spraying had commenced, the system recorded information concerning the sprayer position in the field, the applied volume rate and the adjusted working pressure, each second throughout operation. When spraying had finished, the system generated the actual variable rate application map, which was downloaded from the touch screen via USB. This methodology was repeated for every selected parcel and for every pesticide application process throughout the entire season.

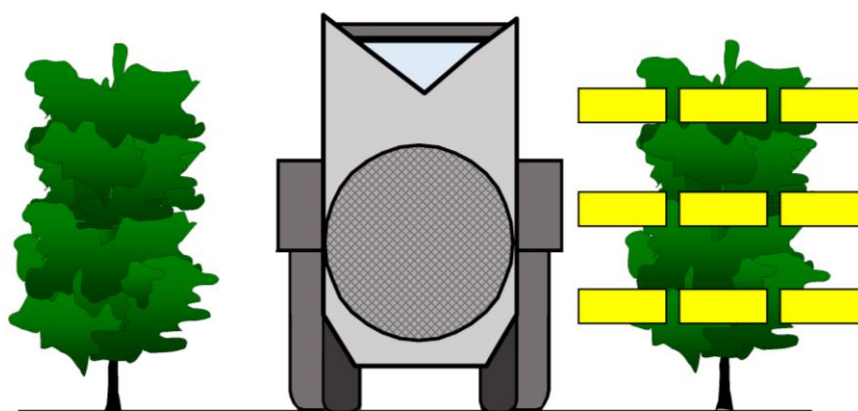
## 2.6. Evaluation of the system accuracy

In order to evaluate the accuracy of the system, the prescription maps and the actual variable rate application maps were compared following the methodology developed by Campos et al. [22], using QGIS software [29]. Within these comparison processes, a random net of 2 points  $m^{-2}$  was created, and each georeferenced random point was assigned with a prescript value “r” and an actual value “p”. For each prescript value “r”, 11 intervals of tolerance were assigned (from 0% to 50% deviation, increasing in steps of 5%). It was then determined if the actual value “p” was within the calculated range  $[r-i, r+i]$ . Once all the points were compared, the percentage of coincidence between the assigned and actual values was calculated. Finally, to visualize the level of accuracy of the actual spray application map, a specific interpolation process, based on the inverse distance weighted (IDW) method, was applied [30].

## 2.7. Evaluation of spray distribution quality

In order to evaluate the spray distribution quality - in all the three different identified vigor zones and in every selected parcel - a detailed quantification of coverage analysis was carried out using Water Sensitive Papers (WSP) (Syngenta, Bassel, Switzerland). Three replicates were arranged in each vigor zone for each pesticide application and parcel. Each sampling point consisted of nine WSP. These were located in the canopy, covering both the internal and external layouts of the canopy, and at three varying heights (Figure 4). This process followed the methodology of both Gil et al. and Miranda-Fuentes et al. [31,32]. In the first two pesticide applications, however, only six WSP were located throughout the canopy, due to its low canopy height.

After each spray application, the WSP were collected, digitized using a scanner at a resolution of 600 dpi, 24 bits (color images), and processed with ImageJ® software, as established by Llop [33], in order to obtain the percentage of coverage.



**Figure 4:** Scheme of the water sensitive papers located in each vine for assessing the spraying coverage.

## 2.8. Evaluation of the biological efficacy

Evaluation of the biological efficacy was carried out by comparing the presence of powdery mildew (*Uncinula necator*) in both the parcels treated with variable rate application (VRA), and in the parcels sprayed with conventional application (CONV). To achieve this process comparison, systematic sampling of 20 points ha<sup>-1</sup> was implemented. Each sampling point (composed of three successive vines) was marked with a flag to maintain its location throughout the season. Two leaves were picked at random from each vine, and the percentage of infection was determined following the EPPO guideline [34].

In order to evaluate the efficacy, two different indexes were calculated for each studied parcel: a) incidence of powdery mildew (Equation 2); and b) degree of powdery mildew infestation (Equation 3). The incidence refers to the number of leaves affected by powdery mildew independently of the severity of their infection.

$$\text{Incidence of mildew (\%)} = \frac{\text{n}^{\circ} \text{ infested leaves}}{\text{n}^{\circ} \text{ total leaves}} \times 100 \quad (2)$$

$$\text{Degree of mildew infestation (\%)} = \frac{\sum \text{category} \times \text{n}^{\circ} \text{ leaves}}{\text{maximum category} \times \text{n}^{\circ} \text{ total leaves}} \times 100 \quad (3)$$

The degree of infestation relates to the quantity of infested leaves, and was classified based on the categories defined in Table 2.

**Table 2.** Affection categories based on the percentage of leaves affected, according to the EPPO guideline [34]

Leaf affection (%)	Category
0	1
<5	2
5-10	3
10-25	4
25-50	5
50-75	6
>75	7

Two sampling processes were used throughout. The first sampling was arranged on July 5<sup>th</sup> (BBCH: Chardonnay 79; Merlot and Cabernet Sauvignon 77) and the second on July 31<sup>st</sup> (BBCH: Chardonnay 85; Merlot and Cabernet Sauvignon 83).

## 2.9. Statistical analyses

For the evaluation of the water sensitive papers' (WSP) coverage, one-way analysis of variance (ANOVA) was performed in order to evaluate the differences between vigor zones.

To evaluate the biological efficacy, the impact of the pesticide application type (conventional and variable rate application) was evaluated using one-way ANOVA for both incidence and infestation, considering vine variety as a covariate.

In all cases, previous to the analysis, the data was transforming using the *arcsin* function to obtain a normal distribution of residues. Statistical analyses were performed using SPSS 25.0 software [35].

## 3. Results and discussion



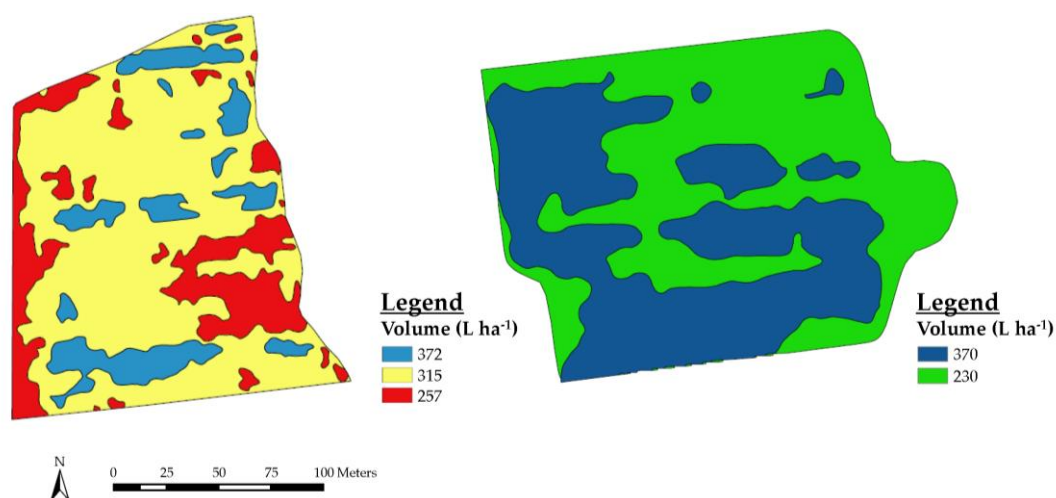
### 3.1. Canopy vigor maps, prescription maps and actual variable rate application maps

Three raw vigor maps were obtained throughout the duration of the season. These were obtained for each of the selected parcels from the spectral images taken from the multispectral camera that was mounted on the UAV. The raw vigor maps have a resolution of approximately 6 cm pxl<sup>-1</sup>, and allow for evaluation of the vegetation condition along the plot. This is the first step in determining the intra-plot variability. From this raw data, three classified canopy vigor maps were obtained for each plot during the growing season. Figure 5 indicates the 12 canopy vigor maps that were generated across the duration of the season. It was noted that these maps changed throughout the vineyard season. Table 3 presents the percentage of area corresponding to each vigor category for each generated canopy vigor map. It can be seen that the majority of the area corresponds to the medium vigor category, since this category includes quintiles 2, 3 and 4.

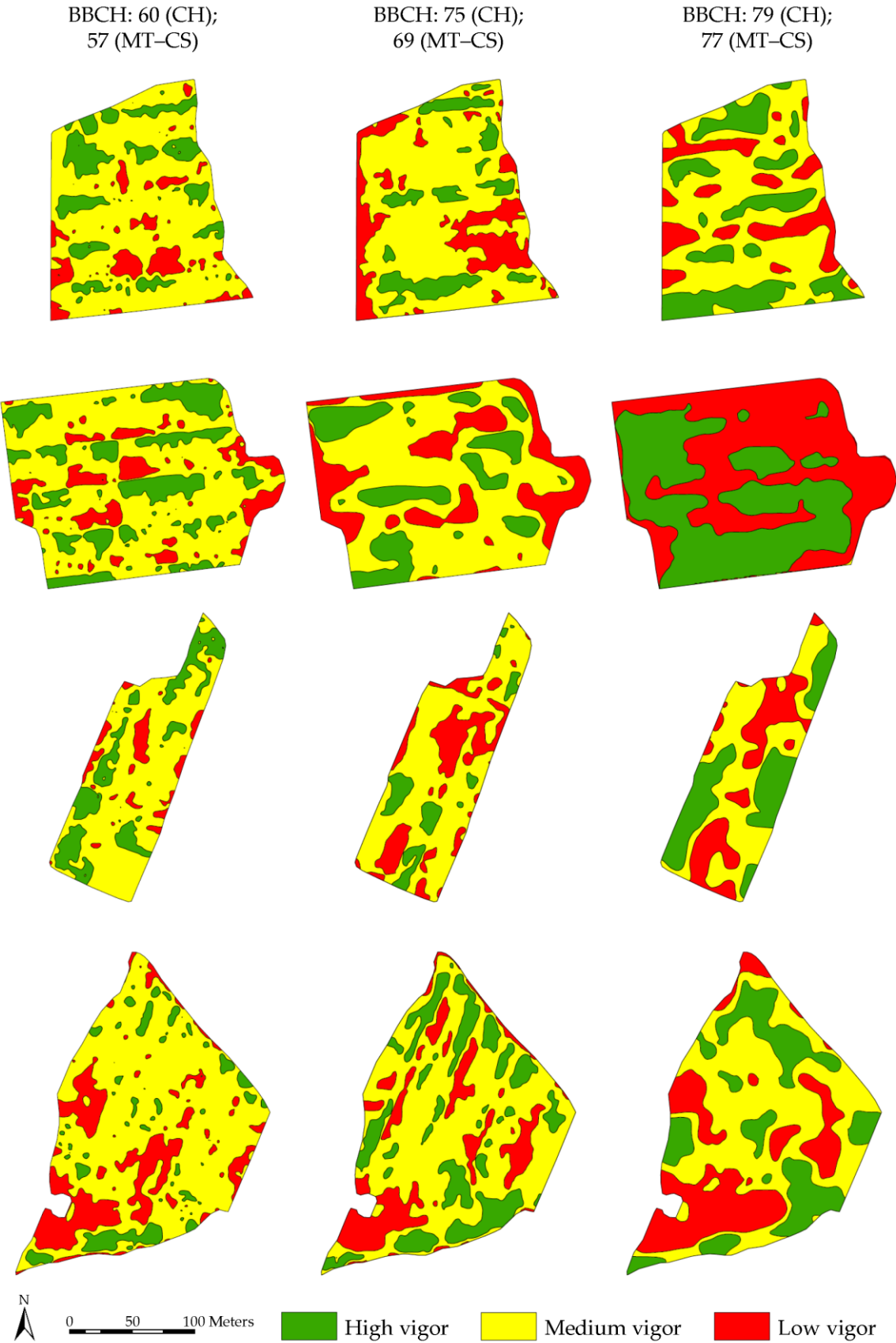
**Table 3.** Percentage of area in each distinguished vigor map category (low - L, medium - M, high - H) in each parcel.

Flight date	1 (Chardonnay)			2 (Merlot)			3 (C.Sauvignon)			4 (C.Sauvignon)		
	L	M	H	L	M	H	L	M	H	L	M	H
May 9th	11.8	71.0	17.2	13.9	63.9	22.2	8.7	68.1	23.2	20.7	71.1	8.2
June 11st	20.4	66.0	13.6	24.2	56.2	19.6	24.6	65.2	10.2	18.5	59.8	21.7
July 2nd	18.1	55.2	26.7	50.9	-	49.1	24.6	45.7	29.7	27.4	48.0	24.6

During the spraying season, a total of 28 spray applications were carried out (7 applications per plot studied). In each of these cases, the vegetation in each area of vigor was measured in order to determine the optimum volume of application using DOSAVIÑA® (Tables 4a and 4b) and thus create the prescription map. Two of these maps are shown as examples in Figure 6. Figure 6 left presents the prescription map built on June 20<sup>th</sup>, which corresponds to the 4<sup>th</sup> spray application of the season on parcel one. In this application, three different volumes of vegetation were determined. In red areas (low vigor), an optimum volume of 257 L ha<sup>-1</sup> was determined. In the yellow areas (medium vigor) an optimum volume of 315 L ha<sup>-1</sup> was determined, and in the blue areas (high vigor) an application volume of 372 L ha<sup>-1</sup>. Figure 6 right shows the prescription map built on July 12<sup>th</sup>, which corresponds to the 6<sup>th</sup> spray application of the season on parcel two. In this case, only two different vigor categories were differentiated. In green areas (low vigor), the volume rate was 230 L ha<sup>-1</sup> and in the blue areas (high vigor), the volume rate was 370 L ha<sup>-1</sup>.



**Figure 6:** Examples of prescription maps used in the field tests. Left: June 20<sup>th</sup> of parcel 1 (Chardonnay). Right: July 12<sup>th</sup> parcel 2 (Merlot).



**Figure 5:** Vigor maps for each parcel in the evaluated BBCH stages.

**Table 4a.** Canopy characterization. Volume rate (L ha<sup>-1</sup>) calculated with Dosaviña® for each variety and canopy vigor (low, medium and high). Selected working conditions (color, number of nozzles and working pressure) for each pesticide application process (1 to 4).

Application date	Parameters	1 (Chardonnay)			2 (Merlot)			3 (C. Sauvignon)			3 (C. Sauvignon)		
		Low	Medium	High	Low	Medium	High	Low	Medium	High	Low	Medium	High
May 24 <sup>th</sup>	High (m)	0.65	0.76	1.01	0.50	0.63	0.74	0.45	0.68	0.85	0.71	0.73	0.79
	Width (m)	0.37	0.44	0.51	0.31	0.38	0.43	0.28	0.39	0.38	0.55	0.55	0.65
	Volume (L ha <sup>-1</sup> )	185*	250*	310*	137	160	190	154*	185*	220*	216*	254*	291*
BBCH 61 (CH)	Nozzles	Brown (6)			Brown (6)			Brown (6)			Brown (6)		
60 (CS-MT)	(Color & n°)												
	Pressure (bar)	5.7	10.3	15.9	6.7	9.1	12.8	7.0	10.1	14.2	7.7	10.7	14.0
June 1 <sup>st</sup>	High (m)	0.94	0.99	1.22	0.73	0.82	0.83	0.82	0.98	1.09	0.96	0.99	1.11
	Width (m)	0.45	0.45	0.47	0.38	0.38	0.42	0.35	0.43	0.43	0.48	0.49	0.51
	Volume (L ha <sup>-1</sup> )	278	309	371	216	247	278	247	309	340	278	309	340
BBCH 69 (CH)	Nozzles	Yellow (6)			Yellow (6)			Brown (4) Orange (4)			Yellow (8)		
61 (CS-MT)	(Color & n°)												
	Pressure (bar)	7.1	8.8	12.8	7.6	10.0	12.7	8.3	13.1	15.9	7.1	8.8	10.7
June 6 <sup>th</sup>	High (m)	0.92	1.08	1.10	0.79	0.73	0.87	0.85	1.13	1.14	1.06	1.04	1.29
	Width (m)	0.50	0.45	0.57	0.47	0.50	0.87	0.41	0.48	0.51	0.52	0.49	0.53
	Volume (L ha <sup>-1</sup> )	309	377	444	206	247	278	206	283	315	286	336	437
BBCH 75 (CH)	Nozzles	Yellow (6) Orange (2)			Yellow (6)			Brown (4) Yellow (4)			Yellow (6) Orange (2)		
69 (CS-MT)	(Color & n°)												
	Pressure (bar)	7.4	11.2	15.6	6.9	10.0	12.7	5.7	10.9	13.6	6.3	8.8	15.1
June 20 <sup>th</sup>	High (m)	0.92	1.11	1.27	0.76	0.88	1.07	0.88	1.03	1.35	0.92	1.08	1.26
	Width (m)	0.37	0.44	0.48	0.35	0.35	0.42	0.34	0.4	0.54	0.37	0.38	0.45
	Volume (L ha <sup>-1</sup> )	257	315	372	229	257	315	257	315	372	257	286	437
BBCH 77 (CH)	Nozzles	Yellow (8)			Brown (4) Yellow (4)			Yellow (8)			Yellow (6) Orange (2)		
75 (CS-MT)	(Color & n°)												
	Pressure (bar)	6.0	9.2	12.8	7.1	9.0	13.6	6.0	9.2	12.8	5.1	6.3	15.1

All nozzles used were hollow cone Albuz ATR models (Albuz Saint-Gobain Desmarquest, Evraux, France). Forward speed during all the treatments was 6.8 km h<sup>-1</sup> except for those marked (\*) where forward speed was 6.0 km h<sup>-1</sup>. CH: Chardonnay; MT: Merlot; CS: Cabernet Sauvignon.

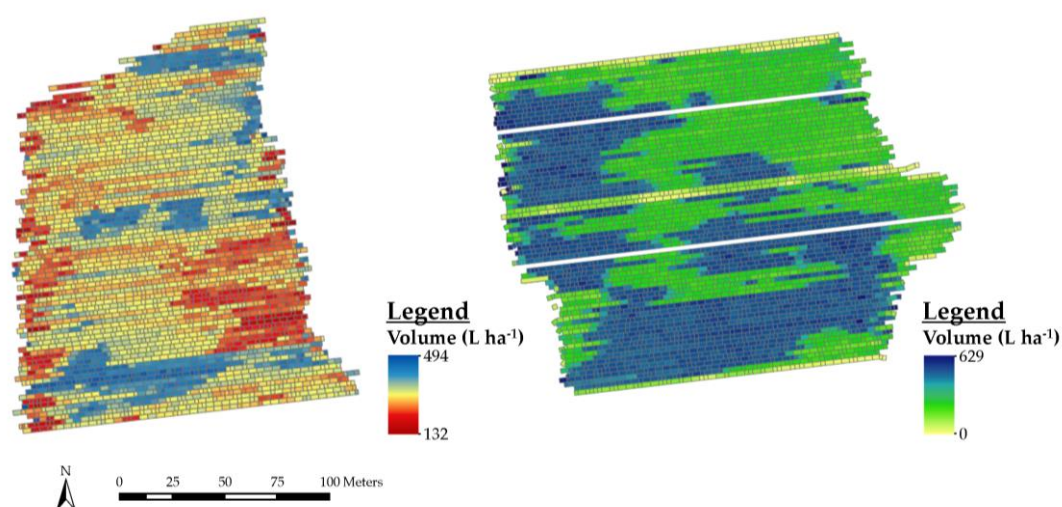
**Table 4b.** Canopy characterization. Volume rate (L ha<sup>-1</sup>) calculated with Dosaviña® for each variety and canopy vigor (low, medium and high). Selected working conditions (color, number of nozzles and working pressure) for each pesticide application process (5 to 7).

Application date	Parameters	1 (Chardonnay)			2 (Merlot)			3 (C. Sauvignon)			3 (C. Sauvignon)		
		Low	Medium	High	Low	Medium	High	Low	Medium	High	Low	Medium	High
July 2 <sup>nd</sup>	High (m)	0.94	1.01	1.16	0.86	0.98	1.07	0.94	1.11	1.31	1.06	1.20	1.31
	Width (m)	0.36	0.41	0.45	0.40	0.42	0.48	0.38	0.39	0.42	0.33	0.34	0.38
BBCH 79 (CH) 77 (CS-MT)	Volume (L ha <sup>-1</sup> )	257	286	343	257	286	315	257	315	372	315	343	372
	Nozzles		Brown (2)			Brown (2)			Yellow (8)			Yellow (8)	
	(Color & n°)		Yellow (6)			Yellow (6)							
	Pressure (bar)	7.4	9.2	13.3	7.4	9.2	11.2	6.0	9.2	12.8	9.2	10.9	12.8
July 12 <sup>th</sup>	High (m)	0.89	1.01	1.10	0.79	-	1.06	0.88	1.09	1.29	0.92	1.11	1.25
	Width (m)	0.38	0.43	0.52	0.43	-	0.53	0.36	0.39	0.47	0.34	0.36	0.42
BBCH 81 (CH) 79 (CS-MT)	Volume (L ha <sup>-1</sup> )	257	286	372	230	-	370	257	286	372	257	315	343
	Nozzles		Yellow (8)			Brown (2)			Yellow (8)			Yellow (8)	
	(Color & n°)					Yellow (6)							
	Pressure (bar)	6.0	7.5	12.8	5.8	-	15.6	6.0	7.5	12.8	6.0	9.2	10.9
July 20 <sup>th</sup>	High (m)	0.83	0.99	1.06	0.79	-	1.03	0.87	1.03	1.26	0.89	1.09	1.20
	Width (m)	0.37	0.44	0.46	0.40	-	0.52	0.37	0.41	0.53	0.33	0.36	0.43
BBCH 83 (CH) 81 (CS-MT)	Volume (L ha <sup>-1</sup> )	229	286	315	229	-	336	257	286	400	257	315	343
	Nozzles		Brown (4)			Brown (2)			Yellow (8)			Yellow (8)	
	(Color & n°)		Yellow (4)			Yellow (6)							
	Pressure (bar)	7.1	11.2	13.6	5.8	-	12.8	6.0	7.5	14.9	6.0	9.2	10.9

All nozzles used were hollow cone Albuz ATR models (Albuz Saint-Gobain Desmarquest, Evraux, France). Forward speed during all the treatments was 6.8 km h<sup>-1</sup>. CH: Chardonnay; MT: Merlot; CS: Cabernet Sauvignon.



In total, 28 actual application maps were downloaded from the touch screen of the prototype after the spray application processes. The actual application maps corresponding to the two examples previously referenced are presented in Figure 7. These maps present the real information about the application volume in these cases.

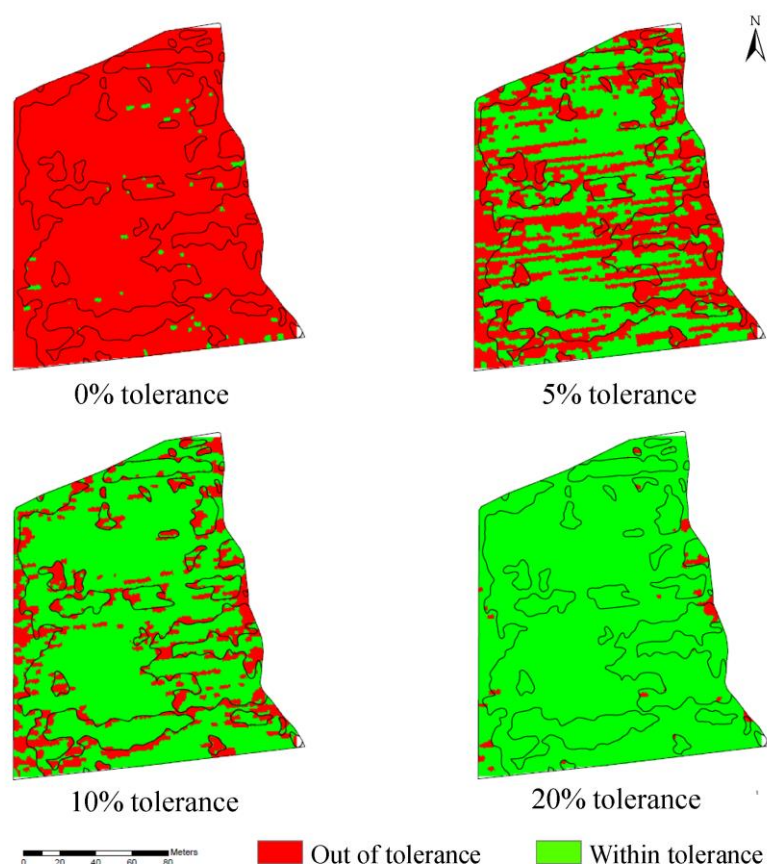


**Figure 7:** Examples of actual application maps obtained in the field's tests. Left: June 20<sup>th</sup> of parcel 1 (Chardonnay). Right: July 12<sup>th</sup> parcel 2 (Merlot).

### 3.2. Accuracy of the system

In order to quantify the correspondence between the prescription maps and the actual variable rate application maps, a range of eleven different thresholds were established, from 0% to 50% tolerance. The most restrictive threshold (0%) measured the percentage of points in which there was no difference between the intended and actual application rate. Conversely, the highest tolerance (50%) quantified the percentage of points where variations of  $\pm 50\%$  of applied volume were detected.

In the case of the spray application on June 20<sup>th</sup>, previously presented as an example, only 1.3% of points were classified as successful points at the 0% threshold, while 99.8% of points were classified at the 50% threshold. Assuming a theoretical tolerance of  $\pm 10\%$ , the system was able to classify 77.4% of the points as successful points. Figure 8 presents the distributed accuracy, classified according to the established threshold level. The red zones marked on the maps indicate the areas where the accuracy of the system exceeded the established thresholds. The majority of these red zones correspond to transition zones, these being zones where the sprayer was ordered to modify the working pressure. As can be seen by the results, the variable rate application method was capable of generate actual application maps with a good degree of accuracy when compared with prescription maps. Table 5 presents the percentage of points that were classified as successful points, assuming a  $\pm 10\%$  tolerance across all parcels and spraying applications. Taking the average value of the data obtained, 77.0% of the points were classified as successful points.



**Figure 8:** Example of accuracy distribution classified according to 0, 5, 10 and 20% threshold.

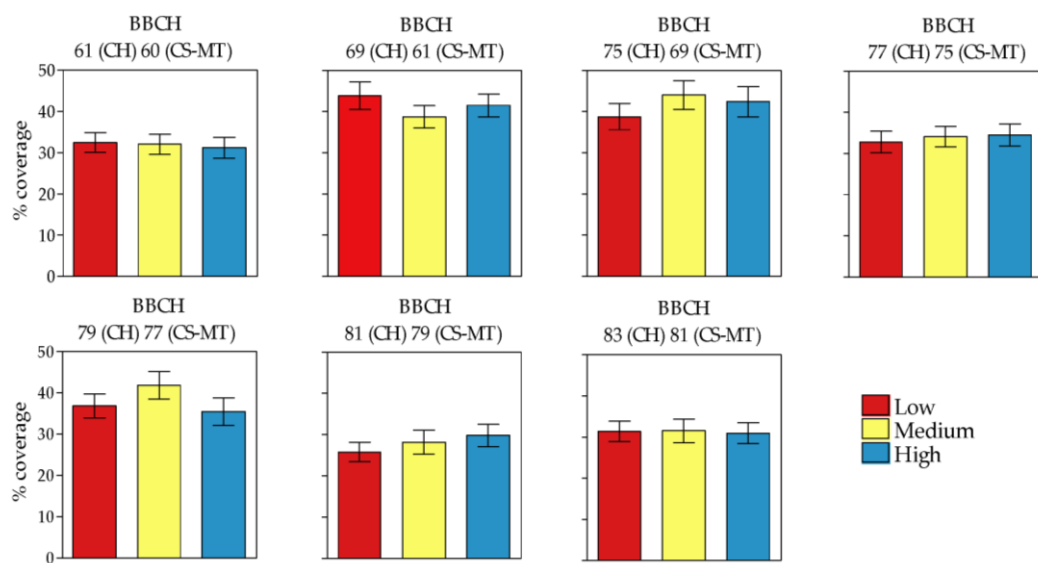
**Table 5.** Percentage of points classified as successful points, assuming a  $\pm 10\%$  tolerance.

Application date	1 (Chardonnay)	2 (Merlot)	3 (C. Sauvignon)	4 (C. Sauvignon)
May 24 <sup>th</sup>	53.8	69.3	70.7	78.8
June 1 <sup>st</sup>	75.2	81.8	78.7	82.2
June 6 <sup>th</sup>	87.4	82.0	84.6	71.7
June 20 <sup>th</sup>	77.4	81.5	74.4	68.2
July 2 <sup>nd</sup>	75.0	84.3	56.6	75.2
July 12 <sup>th</sup>	79.0	78.9	80.4	84.8
July 20 <sup>th</sup>	83.5	78.0	79.3	81.9

### 3.3. Evaluation of spray distribution quality

Coverage analysis, as displayed in Figure 9, indicates that promising results were obtained in all of the studied cases. Taking into account the average data, a coverage value of  $35.1 \pm 0.6\%$  was observed. Despite changing the volume rate, no significant differences ( $P > 0.05$ ) occurred in the coverage percentage across the vigor zones. In general, the coverage values seen during the spray applications ranged from 20 to 40%; it has been reported that this coverage is adequate to ensure pest/disease control in any spray application process [36]. These results support the case for adaptation of these applied volume rates to canopy characteristics, allowing for adjustment of the optimal amount of water while maintaining the coverage and spray distribution quality. Table 6 shows the detailed results obtained, both in terms of coverage (%) and of uniformity of distribution over the whole canopy, measured through the standard error of the mean (SEM). In general, the data

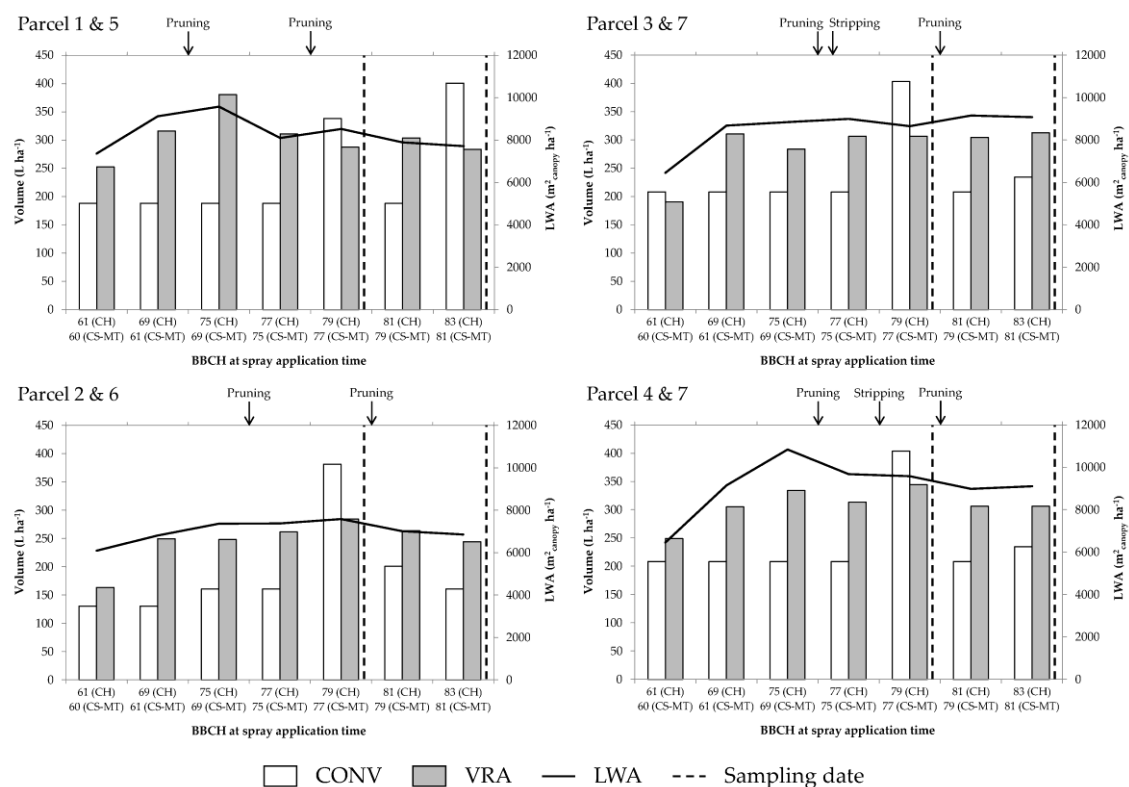
did not indicate differences between the conventional and VRA systems, even if, in some cases, the volume rate was reduced according the canopy structure and dimensions.



**Figure 9:** Percentage of water sensitive papers coverage obtained each vigor. Mean of the parcels  $\pm$  SEM.

### 3.4. Evaluation of the biological efficacy

Table 7 presents the results obtained for powdery mildew incidence and infestation in both types of pesticide application (conventional and variable rate application) within the two sampling periods. Generally, the incidences after the variable rate pesticide application parcels on July 5<sup>th</sup> were significantly lower than those obtained for the conventional spray process (8.4% vs. 23.1%, respectively). No significant differences were obtained, however, in the July 31<sup>st</sup> sampling (12.7% vs. 15.4%, respectively). In both cases, the statistical analysis shows that the covariate vine variety was not significant ( $P > 0.05$ ). Regarding the degree of powdery mildew infestation, no significant differences were witnessed between the conventional and variable rate treatments (15.8% vs 19.3% on July 5<sup>th</sup>, and 16.5% vs. 17.2% on July 31<sup>st</sup>).



**Figure 10:** Volume rate applied in conventional and variable rate parcels in each spray application. Time of the evaluation of the biological efficacy (sampling time) as well as pruning and stripping task are marked.

Figure 10 presents the applied volume rates for the conventional and variable rate application systems throughout the whole growing season. In the case of variable rate application, the volume rate was always related to the canopy characteristics. It followed the canopy development and other changes throughout the period, also accounting for vineyard management (pruning and stripping). In contrast, in conventional applications, the volume rate was largely invariable for all spray applications, with the exception being when the farmer detected any disease symptom. In these cases, the applied volume (and consequently the PPP dose) was doubled. This consequently risked losses to the soil, drift and led to difficulties with residue management. A specific example of this was with the Cabernet Sauvignon variety at BBCH 77, where the volume rate was upgraded from 200 to 400 L ha<sup>-1</sup>.

The biological efficacy results indicate that the incidence of powdery mildew at the first sampling date was significantly higher in the conventional parcels than in the variable rate application parcels. By using a volume rate that was not well adapted to the characteristics of the canopy, incidence of the disease increased, which, as described previously, forced the farmer to increase the volume rate application. This irrational increase in volume rate in turn significantly increased the diffuse contamination risk.



**Table 6.** Percentage of coverage (mean  $\pm$  SE of the mean) for each vigor zone in each studied parcel.

Application date	1 (Chardonnay)			2 (Merlot)			3 (C. Sauvignon)			4 (C. Sauvignon)		
	Low	Medium	High	Low	Medium	High	Low	Medium	High	Low	Medium	High
May 24 <sup>th</sup>	23 $\pm$ 2.2	14 $\pm$ 1.3	12 $\pm$ 2.4	32 $\pm$ 3.9	26 $\pm$ 5.8	20 $\pm$ 4.4	35 $\pm$ 2.0	38 $\pm$ 6.4	48 $\pm$ 5.6	38 $\pm$ 3.9	43 $\pm$ 5.8	42 $\pm$ 3.1
June 1 <sup>st</sup>	29 $\pm$ 2.1	42 $\pm$ 2.7	39 $\pm$ 4.7	-	29 $\pm$ 6.6	37 $\pm$ 6.9	61 $\pm$ 6.6	42 $\pm$ 8.2	41 $\pm$ 4.5	41 $\pm$ 4.7	43 $\pm$ 4.7	47 $\pm$ 3.3
June 6 <sup>th</sup>	64 $\pm$ 5.5	95 $\pm$ 1.8	71 $\pm$ 5.4	30 $\pm$ 1.2	30 $\pm$ 3.7	25 $\pm$ 4.1	33 $\pm$ 2.0	37 $\pm$ 3.2	28 $\pm$ 2.7	30 $\pm$ 5.3	31 $\pm$ 6.3	50 $\pm$ 1.8
June 20 <sup>th</sup>	42 $\pm$ 7.1	37 $\pm$ 6.6	40 $\pm$ 3.9	30 $\pm$ 2.5	30 $\pm$ 8.6	33 $\pm$ 4.9	31 $\pm$ 2.3	34 $\pm$ 4.2	25 $\pm$ 2.4	28 $\pm$ 5.0	35 $\pm$ 2.3	40 $\pm$ 4.0
July 2 <sup>nd</sup>	52 $\pm$ 4.5	80 $\pm$ 7.3	67 $\pm$ 2.7	29 $\pm$ 3.4	31 $\pm$ 6.0	27 $\pm$ 4.0	36 $\pm$ 9.8	29 $\pm$ 2.3	19 $\pm$ 4.0	30 $\pm$ 7.7	27 $\pm$ 2.8	32 $\pm$ 4.6
July 12 <sup>th</sup>	29 $\pm$ 4.5	31 $\pm$ 1.5	38 $\pm$ 5.2	23 $\pm$ 1.1	-	31 $\pm$ 1.3	27 $\pm$ 5.5	25 $\pm$ 5.1	24 $\pm$ 9.0	25 $\pm$ 2.0	29 $\pm$ 1.1	26 $\pm$ 3.4
July 20 <sup>th</sup>	28 $\pm$ 1.9	32 $\pm$ 1.4	35 $\pm$ 4.9	23 $\pm$ 3.7	-	27 $\pm$ 3.3	39 $\pm$ 3.3	33 $\pm$ 6.1	35 $\pm$ 4.8	35 $\pm$ 2.8	29 $\pm$ 1.7	27 $\pm$ 4.9

**Table 7.** Percentage of incidence and degree infestation of powdery mildew at two sampling dates for conventional (CONV) and variable rate application (VRA) parcels.

Sampling date	Indexes	1 (CH)	5 (CH)	2 (MT)	6 (MT)	3 (CS)	4 (CS)	7 (CS)
		VRA	CONV	VRA	CONV	VRA	VRA	CONV
July 5 <sup>th</sup>	Incidence	11.6	30.8	10.0	12.5	7.6	4.5	26.1
BBCH: 79 (CH); 77 (CS-MT)	Degree infestation	17.3	20.3	15.7	16.1	15.4	14.9	18.5
July 31 <sup>st</sup>	Incidence	11.3	17.3	23.0	13.6	12.1	4.5	15.2
BBCH: 85 (CH-CS-MT)	Degree infestation	16.4	17.0	18.7	17.2	16.0	14.9	17.4

CH: Chardonnay; MT: Merlot; CS: Cabernet Sauvignon.

#### 4. Conclusions

In this study, a prototype variable rate application system, based on prescription maps, was tested throughout the duration of an entire vineyard growth season. The major findings were found to be:

- The classified vigor maps were simply transformed into prescription maps by taking into account the structural canopy characteristics.
- The system was able to read a prescription map and appropriately modify the working parameters (working pressure) depending on the position of the sprayer in the field.
- A system accuracy of approximately 80% was obtained, assuming a tolerance of 10% deviation.
- Despite changing the working pressure and volume rate between the vigor zones, the coverage values that were obtained during the spray applications can be considered similar in all cases. The coverage was also deemed adequate in minimum terms to ensure pest/disease control in all cases.
- The variable rate application process, based on the combination of vigor maps with the DSS Dosaviña® to determine the optimal volume rate, can obtain equivalent results regarding biological efficacy as a conventional pest application process.
- The variable rate application process allows an improved and more reasonable use of PPP, by taking into considering the specific characteristics of the intended target (canopy), when compared with a conventional spraying process. This results in a safer, and more sustainable, use of pesticides throughout the entire growing season.

**Author Contributions:** methodology, J.C., M.G., J.L., R.S. and E.G.; investigation, all of the members; data curation, J.C. and M.G.; writing—original draft preparation, J.C., M.G. and E.G.; writing, J.C., M.G. and E.G.—review and editing, E.G.; project administration, E.G. and J.C.

**Funding:** This research was developed with partial funding from the FI-AGAUR grant from the Generalitat de Catalunya (2017 FI\_B 00893).

**Acknowledgments:** The authors would like to thank to Miguel Torres S.A. for their support in the field trials and Estel Grup S.L. for providing the electronic controller WAATIC and for the technical monitoring of the system during the whole season.

**Conflicts of Interest:** The authors declare no conflict of interest.

#### References

1. Miranda-Fuentes, A.; Llorens, J.; Rodriguez-Lizana, A.; Cuenca, A.; Gil, E.; Blanco-Roldán, G.L.; Gil-Ribes, J. Assessing the optimal liquid volume to be sprayed on isolated olive trees according to their canopy volumes. *Science of the Total Environment*, **2016**, *568*, 269–305. <https://doi.org/10.1016/j.scitotenv.2016.06.013>.
2. Gil, E.; Campos, J.; Ortega, P.; Llop, J.; Gras, A.; Armengol, E.; Salcedo, R.; Gallart, M. DOSAVIÑA: Tool to calculate the optimal volume rate and pesticide amount in vineyard spray applications based on a modified leaf wall area method. *Computers and Electronics in Agriculture*, **2019**, *160*, 117–130.
3. Siegfried, W.; Viret, O.; Huber, B.; Wohlhauser, R. Dosage of plant protection products adapted to leaf area index in viticulture. *Crop Prot.*, **2007**, *26* (2), 73–82.
4. Furness, G.O.; Thompson, A.J. Using point of first run-off and spray volume in litres per 100 metres per metre of canopy height for setting pesticide dose. *Agricultural Engineering International: the GIGR Ejournal*, **2008**, X.
5. Walklate, P.J.; Cross, J.V.; Pergher, G. Support system for efficient dosage of orchard and vineyard spraying products. *Comput. Electron. Agric.*, **2011**, *75* (2), 355–362.
6. Chen, Y.; Zhu, H.; Ozkan, H.E. Development of a variable-rate-sprayer with laser scanning sensor to synchronize sprayer outputs to tree structures. *Transactions of the ASABE*, **2012**, *55*(3), 773–781. <https://doi.org/10.13031/2013.41509>.

7. Codis, S.; Douzals, J.P. Comparaison des systèmes d'expression des doses de produits de protection de la vigne dans 5 pays européens et les besoins d'une harmonisation. In: AFPP – CIETAP – Conference sur les techniques d'application de produits de protection des plantes, Lyon, France, 15-16 March 2012, pp. 10.
8. Gil, E.; Gallart, M.; Llorens, J.; Llop, J.; Bayer, T.; Carvalho, C. Spray adjustments based on LWA concept in vineyard. Relationship between canopy and coverage for different application settings. *Aspects of Applied Biology* 122, International Advances in Pesticide Application, Oxford, UK, 08-10 January 2014, pp. 25–32.
9. Garcerá, C.; Fonte, A.; Moltó, E.; Chueca, P. Sustainable use of pesticide applications in citrus: a support tool for volume rate adjustment. *Int. J. Environ. Res. Public Health*, **2017**, *14* (7). <https://doi.org/10.3390/ijerph14070715>.
10. Du, Q.; Chang, N. B.; Yang, C.; Srilakshmi, K. R. Combination of multispectral remote sensing, variable rate technology and environmental modeling for citrus pest management. *Journal of Environmental Management*, **2008**, *86*(1), 14–26.
11. Escolà, A.; Rosell-Polo, J. R.; Planas, S.; Gil, E.; Pomar, J.; Camp, F., et al. Variable rate sprayer Part 1—Orchard prototype: design, implementation and validation. *Computers and Electronics in Agriculture*, **2013**, *95*, 122–135. <https://doi.org/10.1016/j.compag.2013.02.004>.
12. Gil, E.; Llorens, J.; Llop, J.; Escolà, A.; Rosell-Polo, J. R. Variable rate sprayer. Part 2—Vineyard 1 prototype: Design, implementation and validation. *Computers and Electronics in Agriculture*, **2013**, *95*, 136–150. <https://doi.org/10.1016/j.compag.2013.02.010>.
13. de Castro, A. I.; Jiménez-Brenes, F. M.; Torres-Sánchez, J.; Peña, J. M.; Borra-Serrano, I.; López-Granados, F. 3-D characterization of vineyards using a novel UAV imagery-based OBIA procedure for precision viticulture applications. *Remote Sensing*, **2018**, *10*, 584. <https://doi.org/10.3390/rs10040584>.
14. Hall, A.; Lamb, D.W.; Holzapfel, B.; Louis, J. Optical remote sensing applications in viticulture – A review. *Australian Journal of Grape and Wine Research*, **2002**, *8*(1), 36–47. <https://doi.org/10.1111/j.1755-0238.2002.tb00209.x>
15. Johnson, L. F.; Roczen, D. E.; Youkhana, S. K.; Nemani, R. R.; Bosch, D. F. Mapping Vineyard leaf area with multispectral satellite imagery. *Computers and Electronics in Agriculture*, **2003**, *38*, 37–48.
16. Baluja, J.; Diago, M. P.; Balda, P.; Zorer, R.; Meggio, F.; Morales, F. et al. Assessment of vineyard water status variability by thermal and multispectral imagery using an Unmanned Aerial Vehicle (UAV). *Irrigation Science*, **2012**, *30*, 511–522.
17. Albetis, J.; Duthoit, S.; Guttler, F.; Jacquin, A.; Goulard, M.; Poilvé, H. et al. Detection of Flavescence dorée grapevine disease using Unmanned Aerial Vehicle (UAV) multispectral imagery. *Remote Sensing*, **2017**, *9*, 308.
18. Mathews, A. J.; Jensen, J. L. R. Visualizing and quantifying vineyard canopy LAI using an Unmanned Aerial Vehicle (UAV) collected high density structure from motion point cloud. *Remote Sensing*, **2013**, *5*, 2164–2183.
19. Ballesteros, R.; Ortega, J. F.; Hernández, D.; Moreno, M. Á. Characterization of *Vitis vinifera* L. canopy using unmanned aerial vehicle-based remote sensing and photogrammetry techniques. *American Journal of Enology and Viticulture*, **2015**, *66*(2), 120–129.
20. Poblete-Echeverría, C.; Olmedo, G. F.; Ingram, B.; Bardeen, M. Detection and segmentation of vine canopy in ultra-high spatial resolution rgb imagery obtained from Unmanned Aerial Vehicle (UAV): A case study in a commercial vineyard. *Remote Sensing*, **2017**, *9*, 268.
21. Weiss, M.; Baret, F. Using 3D point clouds derived from UAV RGB imagery to describe vineyard 3D macro-structure. *Remote Sensing*, **2017**, *9*, 111.
22. Campos, J.; Llop, J.; Gallart, M.; García-Ruiz, F.; Gras, A.; Salcedo, R.; Gil, E. Development of canopy vigor maps using UAV for site-specific management during vineyard spraying process. *Precision Agric.*, **2019**, *20*, 1136–1156. <https://doi.org/10.1007/s11119-019-09643-z>
23. EU. (2009). Directive 2009/128/EC of the European Parliament and of the Council of 21 October 2009 Establishing a Framework for Community Action to Achieve the Sustainable Use of Pesticides; 2009/128/EC (p. 2009). Bruxelles, Belgium: European Parliament.
24. Vogel, J.W.; Wolf, R.E.; Dille, A. Evaluation of a Variable Rate Application System for Site-Specific Weed Management. Paper No. 051120, St Joseph, MI, USA: ASAE, 2005.
25. Michaud, M.; Watts, K.C.; Percival, D.C.; Wilkie, K.I. Precision pesticide delivery based on aerial spectral imaging. *Canadian Journal of Biosystems Engineering*. **2008**, *50*, 2.9–2.15

26. EC. (2013). Structure and Dynamics of EU Farms: Changes, Trends and Policy Relevance. EU Agricultural Economics Briefs, 9. European Commission Agriculture and Rural Development, Brussels (2013).
27. Meier, U. BBCH-Monograph. Growth stages of plants - Entwicklungsstadien von Pflanzen – Estadios de las plantas - Développement des Plantes. Blackwell Wissenschaftsverlag, Berlin und Wien, 1977, 622.
28. Rouse, J. W.; Haas, R. H.; Schell, J. A.; Deering, D. W. Monitoring vegetation systems in the Great Plains with ERTS, Third ERTS Symposium, NASA SP-351, 1973, I, 309-317.
29. QGIS Development Team, 2016. QGIS Geographic Information System. Open Source Geospatial Foundation. URL <http://qgis.osgeo.org>
30. Bartier, P.M.; Keller, C.P. Multivariate interpolation to incorporate thematic surface data using inverse distance weighting (IDW). *Computers & Geosciences*, **1996**, 22 (7), 795–799.
31. Gil, E.; Escolà, A. Design of a decision support method to determine volume rate for vineyard spraying. *Applied Engineering in Agriculture*, **2009**, 25(2), 145–151.
32. Miranda-Fuentes, A.; Rodríguez-Lizana, A.; Gil, E.; Agüera-Vega, J.; Gil-Ribes, J. Influence of liquid-volume and air flow rates on spray application quality and homogeneity in super-intensive olive tree canopies. *Sci. Total Environ.* **2015**, 537, 250–259.
33. Llop, J.; Gil, E.; Gallart, M.; Contador, F.; Ercilla, M. Spray distribution evaluation of different setting of a hand-held trolley sprayer used in green house tomato crops. *Pest Manage.* **2015**, 72 (3), 505–516. <https://doi.org/10.1002/ps.4014>
34. OEPP/EPPO 2002. EPPO standards. Guidelines for the biological evaluation of fungicides. Bulletin OEPP/EPPO, 32 (2002), pp. 315–318
35. IBM Corp. Released 2017. IBM SPSS Statistics for Windows, Version 25.0. Armonk, NY: IBM Corp.
36. Chen, Y.; Ozkan, H.E.; Zhu, H.; Derksen, R.C.; Krause, C.R. Spray de position in side tree canopies from a newly developed variable-rate air-assisted sprayer. *Trans. ASABE*, **2013**, 56 (6), 1263–1272.