

Greener nanocomposite polyurethane foam based on sustainable polyol and natural fillers: investigation of chemico-physical and mechanical properties

Ferdinando De Luca Bossa¹, Chiara Santillo¹, Letizia Verdolotti^{1}, Pietro Campaner²,
Andrea Minigher², Laura Boggioni³, Simona Losio³, Francesca Coccia³, Salvatore Iannace^{1,3},
Giuseppe C. Lama¹*

¹ Institute for Polymers, Composites and Biomaterials-CNR, P.le E. Fermi 1, Portici (NA), Italy

² AEP Polymers Srl, 34149 Basovizza, Trieste (Italy)

³ Institute for Chemical Science and Technologies -CNR, v. Corti 12- 20133 Milano, Italy

Abstract

Nowadays, the chemical industry is looking for sustainable chemicals to synthesize nanocomposite bio-based polyurethane foams, PUs, with the aim to replace the conventional petrochemical precursors. Some possibilities to increase the environmental sustainability in the synthesis of nanocomposite PUs include the use of chemicals and additives derived from renewable sources (such as vegetable oils or biomass wastes) which comprise an increasing wider base raw materials. Generally, sustainable PUs exhibit chemico-physical, mechanical and functional properties which are not comparable with those of PUs produced from petrochemical precursors. In order to enhance the performances as well as the bio-based aspect, the addition in the polyurethane formulation of renewable or natural fillers can be considered. Among these, walnut shells and cellulose are very popular wood-based waste and due to their chemical composition, carbohydrate, protein and/or fatty acid, can be used as reactive fillers in the synthesis of PUs, diatomite as natural inorganic nanoporous filler can be also evaluated to improve mechanical and thermal insulation properties of rigid PUs.

In this respect, sustainable nanocomposite rigid PU foams are synthesized by using a cardanol-based Mannich polyol, MDI as isocyanate source, catalysts and surfactant to regulate the polymerization and blowing reactions, H₂O as sustainable blowing agent and suitable amount (5wt%) of ultramilled walnut shell, cellulose and diatomite as filler. The effect of these fillers on the chemico-physical, morphological, mechanical and functional performances on PU foams has been analyzed.

Keywords: *Nanocomposite foams, milled walnut shell, milled cellulose, diatomite, sustainable polyurethane.*

***Corresponding author:** Letizia Verdolotti. email: letizia.verdolotti@cnr.it

Phone: +39 081 775 88 39; Fax +39 081 775 88 50

P.le E. Fermi, 1, 80055 Portici (Naples), Italy

1. Introduction

Since the publication of the principles of “green chemistry” at the end of ‘90s by Anastas and Werner [1], a great effort related to improving the treatment, synthesis and disposal of chemical substances was made by scientific community. Attention has principally paid to those issues aimed to protect the environment and preserve its resources for future generations. For these reasons, given that the crude oil is a limited resource, research has to develop other processes to produce materials starting from eco-friendly and sustainable source [2-5]. In this contest, biomass, waste and by-product from different industrial sectors have gained interest as sustainable source to obtain chemicals that can be used (or re-used) in industries [6]. Vegetable oil [2] and carbohydrates are interesting type of biomass as starting compounds in many industrial sectors such as bio-refinery and polymer industry, [7] and, more specifically, they are interesting starting materials for the synthesis of polyurethanes [8]. Polyurethanes (PUs) are one of the most versatile classes of polymers. Their morphology, as well as their chemical structure, can be tailored to fit specific requirements by a correct selection of the precursors. Thanks to their versatility, PUs are one of the most requested materials, used in several sectors of the industry, such as thermo-insulator for aerospace, building, automotive, shoe soles, and wood substitutes and more [9,10]. For their preparation, a polyaddition reaction between an oligomeric polyol and a diisocyanate (or polyisocyanate) mainly derived from treatment of crude oil is required [11].

Furthermore, the PU can be used as a matrix to prepare high performance composite or nanocomposite foam materials to be applied as advanced materials in specific fields. The introduction of micro or nano-particles [12-14] within a polyurethane foam matrix permit to overcome some limitation of conventional PU. For instance, PU foam composites highlight properties such as abrasion resistance, fire resistance, high flexibility, high durability, anti-aging, high impact strength, good thermal stability at high and low temperature which permit them to be also applied in sensible sectors such as aerospace.

Many studies have demonstrated that several directions can be taken to make an eco-friendlier production process of PUs. One of the most investigated routes use “bio-based polyols” [11, 15] derived from such as agricultural (biomass) and industrial waste stream [3-5] to produce PUs.

In this respect, among several renewable resources, Suresh et al. used cashew nut shell liquid (CNSL), derived by a cashew processing. Thanks to its peculiar chemical structure (alkyl phenolic moiety with an un-saturated C15 side chain) [11]) this compound resulted to be an optimal candidate to synthesize polyurethane foams with enhanced mechanical and functional properties [11, 15].

In this work, sustainable polyurethane composite foams, starting from a Mannich-based polyol and three different fillers, such as walnut shell, cellulose and diatomite, were synthesized. These fillers were selected for their availability (wide natural availability), their chemical composition (-OH functional groups) and structure, which interact with the polyurethane matrix inducing an improving of mechanical or functional performances. [9, 16, 17] The effect of those fillers on the thermal, mechanical and chemico-physical properties of the produced composite foams were investigated and compared to the pristine polyurethane foam.

2. Materials and methods

2.1. Chemicals

Methylene diphenylisocyanate-MDI (SUPRASEC 2085 with NCO content equal to 30.5 wt%) and sustainable Mannich polyol (code GX9104 with OH index equal to 245 mgKOH/g) were kindly provided by Huntsman srl (Italy) and Cardolite Corporation (USA), respectively. CH₃COOK and Niax PM40 additives were used to control both polymerization and blowing reactions, and L6164, as surfactant to stabilize the cells in the PU foam, were kindly provided by Momentive (Italy). Distilled H₂O was used as blowing agent. Cellulose powder (Sigma Aldrich, Code C8002) and walnut shell (food waste) were milled (for 120 minutes) by using a pestle mill equipment until to obtain a granulometry around 8 and 8.5 μm , respectively. Diatomite (Celite 545C) flux calcined diatomaceous earth filter aid, was supplied by Celite France.

All the materials were used as received.

2.2. Foams nanocomposite preparations, PUs

PUs were synthesized by setting the NCO/OH ratio equal to 1.4. Different foams samples were obtained by adding suitable amount of catalysts, surfactant, H₂O and dried powder (walnut shell, cellulose or diatomite) in the polyol. After mixing, through a magnetic stirring plate, a definite amount of MDI was added to the aforementioned mixture and mixed. The resulting composite mixture was left to rise in a closed rectangular mould (10x20x5cm³) and, the produced foams were subsequently cured at 40°C for 2 hours before any characterization. A reference PU formulation was also prepared for properly comparison. In Table 1 the formulations along with their sample codes are reported. In order to minimize boundary effects and assure that the cellular structure is homogenous, chemical-physical and mechanical characterizations have been performed on samples cut from the center of the plates.

Table 1. PU and Composite foams formulations (*wt% with respect to 100 parts of total polyol.)

<i>Sample</i>	<i>Polyol (wt%)</i>	<i>MDI (wt%)</i>	<i>CH₃COOK (wt%)</i>	<i>Niax L6164 (wt%)*</i>	<i>NiaxPM40 (wt%)*</i>	<i>H₂O (wt%)*</i>	<i>Powder (wt%)*</i>
<i>PUG</i>	50	48	0.25	0.50	0.25	0.50	/
<i>PUG-C</i>	48	45	0.24	0.48	0.24	0.48	5
<i>PUG-WS</i>	48	45	0.24	0.48	0.24	0.48	5
<i>PUG-D</i>	48	45	0.24	0.48	0.24	0.48	5

3. Characterizations

3.1. Wide and Small Angle X-ray Scattering (WAXS/SAXS)

Wide (WAXS) and Small Angle X-ray Scattering (SAXS) were performed using an Anton Paar SAXSess camera equipped with a 2D imaging plate detector. 1.5418 Å wavelengths CuK α X-Rays were generated by a Philips PW3830 sealed tube generator source (40kV, 50mA) and slit collimated. Spectra of pristine PUR, PUG-C, PUG-WS, PUG-D, were collected for 60 minutes. All scattering data were dark current and background subtracted, and normalized for the primary beam intensity. [17]

3.2. Infrared Spectroscopy (FTIR)

FTIR spectra were recorded at room temperature by using a FT-IR spectrometer (model Frontier Dual Ranger, PerkinElmer, USA) in attenuated total reflectance (ATR) mode from 400-4000 cm⁻¹. ATR spectra were collected on the surface of the cubic foam sample before and after UV treatment. Spectra were recorded at 4 cm⁻¹ resolution, and the reported results are the average of 64 scans. [9, 17]

The spectral region analyzed ranging from 1400 to 1800 cm⁻¹, all the spectra were background-corrected [17] and subsequently were deconvoluted with OriginPro 8.0 software by using Gauss function.

3.3. Polarized optical microscopy (POM)

Optical microphotographs of the samples were recorded at room temperature in polarized light using an Olympus BX51 microscope. The pristine PUG and the composite foams PUG-C, PUG-WS and PUG-D were mildly grinded before POM analysis.

3.4. Scanning electron microscopy (SEM)

Foam morphology was analysed with a scanning electron microscope (model S8000, Tescan, Czech Republic). Small specimens were cut ($0.5 \times 0.5 \times 0.5 \text{ cm}^3$) from the middle of the foam in the direction of growth. The pieces were coated with gold with a sputter coater (Emscope SC500, UK) before observation.

3.5. Thermal properties (TGA, DSC and thermal conductivity)

Thermal degradation behavior was evaluated by thermo-gravimetric analysis (TGA) that was carried out in nitrogen flow (flow rate=40 ml/min) using a TGAQ500-TA Instruments, at heating rate equal to $10^\circ\text{C}/\text{min}$ in the Temperature range from 30°C to 1000°C . Samples mass was approximately 10 mg.

The differential scanning calorimetric (DSC) analyses were conducted on a Q 1000, TA Instruments, USA. Samples were first heated from -80°C to 200°C , and then subjected to cool up to -80°C , and finally reheated to 200°C . The rates of heating and cooling were $10^\circ\text{C}/\text{min}$.

Thermal conductivity, λ , was evaluated by C-Therm Technologies (TCi) Analyzer.

3.6. Mechanical properties

Mechanical compressive strength of composite foams was assessed according to ASTM D1621 by applying a compression load to specimens having a square section ($4 \times 4 \times 4 \text{ cm}^3$). The compression tests were carried out at room temperature and humidity, by using a universal testing machine (model CMT4304 from Shenzhen SANS Testing Machine Co. -China, now MTS-USA) equipped with a 30 kN load cell and the cross-head speed was equal to 4 mm/min.

Foam density was calculated as the ratio between the weight and geometric volume of composite foams. The weight was measured by an analytical balance (model AB265-S from Mettler Toledo, USA) and sample dimensions were evaluated by a high-resolution caliper (model 500-181-30 from Mitutoyo, Japan).

Five samples for each composition were analyzed and the average values and standard deviations were evaluated.

4. Results and discussion

4.1. Wide and Small Angle X-ray Scattering (WAXS/SAXS) and Optical polarized microscopy (POM)

WAXS spectra of the milled cellulose (C), the milled walnut shell (WS) and of the diatomite (D), used as fillers in the preparation of polyurethane composite foams, are shown in Figure 1a.

The WAXS profile of the C shows the presence of two very broad halos (which are almost collapsed in only one broad halo) at 2θ values of $\sim 19.57^\circ$ and 15.28° , suggesting that the used C is characterized by a high degree of amorphous phase and only few and small crystals are present in a mixture of the Form I and Form II [12]. Two better-resolved diffraction peaks at 2θ values of 20.45° and 15.05° are observed in the WAXS spectrum of powders of the WS (Figure 1a), revealing the existence of crystals in the Form I and II of the cellulose and a higher crystallinity than the C.

For the diatomite (D), all diffraction peaks detected in the corresponding WAXS profile can be assigned by the attendance of different polymorphic forms of silica. [17,18]

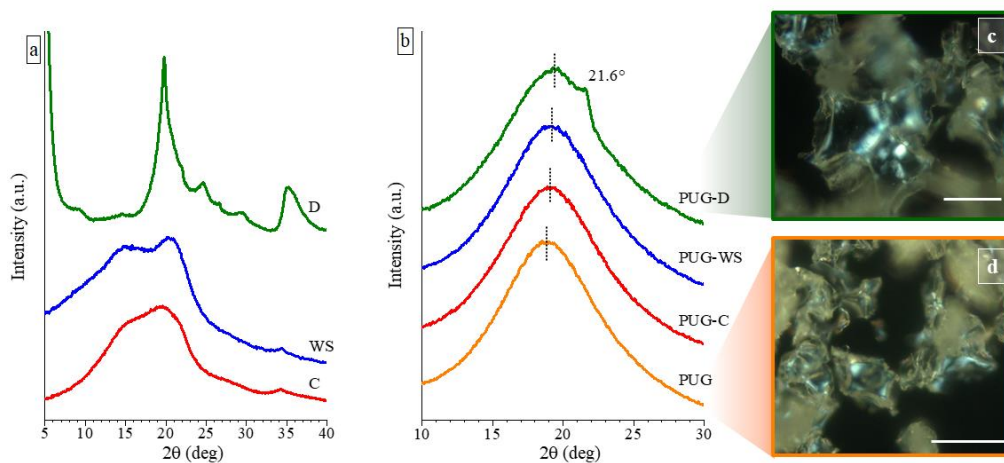


Figure 1 WAXS profiles of the milled cellulose (C), milled walnut shell (WS), and diatomite (D) fillers (a) and of the polyurethane composite foams PUG, PUG-C, PUG-WS and PUG-D (b). POM images of the PUG-D (c) and of the pristine PUG (d). The scale bar in the POM images is 50 μm .

In order to study the influence of the different natural fillers on the crystallization process of the polyurethane foam, WAXS measurement were carried out on pristine PUG and on composite systems PUG-C, PUG-WS and PUG-D (Figure 1b).

The diffraction profiles of the pristine PUG and of the composite foams PUG-C and PUG-WS are characterized only by a broad halo centered at $2\theta \approx 19^\circ$ indicating that the systems are amorphous. Instead, in the WAXS profile of the sample PUG-D it is evident a shoulder at $2\theta = 21.6^\circ$ related to the appearance of a low crystallinity of the polyurethane (PU). [19] In fact, since the maximum diffraction peak of the diatomite is located at $2\theta = 19.8^\circ$ (Fig 1b), the shoulder in the WAXS profile of the PUG-D can be attributed only to the crystallinity of the polymer. This result is also in agreement with the presence of spherulites, with size of about 20-30 μm , in the POM image of the sample PUG-D (Figure 1c). Similar spherulitic structures were not found in the POM images of the pristine PUG (Fig 1d) and of the composite foams PUG-C and PUG-WS (data not shown). Probably, PUG, PUG-C, and PUG-WS systems that appear amorphous from WAXS analysis, are characterized by very small crystalline entities, which are difficult to detect by POM observations. Therefore, WAXS and POM data of the foams suggest that the different fillers participate in different manners on the crystallization process of the polyurethane and in particular, the diatomite induces an increase of the crystallinity acting as a nucleating agent on the crystallization of the polymer.

Furthermore, in the WAXS profiles of the PUG-C, PUG-WS and PUG-D is observed a shift at slightly higher 2θ values of the amorphous halo compared to the 2θ value of the pristine PUG (from $2\theta = 18.76^\circ$ for the PUG to 19.02° , 19.09° and 19.35° for the PUG-C, PUG-WS and PUG-D, respectively). This effect is ascribed to a modification of the local microstructure of the polyurethane network, which likely arises from the ability of cellulose, walnut shell and diatomite to become involved in the building up of the organic network through crosslinking reactions among $-\text{OH}$ groups of the fillers and $-\text{NCO}$ groups of the isocyanate. [20]

The polyurethane composite foams were further investigated by SAXS experiments in order to understand how the interaction of the different fillers with the PU network intervenes on the PU morphology and finally to correlate the PU morphology to the final properties (such as thermal and mechanical properties) of the systems.

SAXS analysis has been widely used for studying PU morphology [21-25] because these materials are usually random segmented copolymers of alternating flexible soft-segments (SS) and more rigid hard-segments (HS) containing urethane and/or urea domains. Hence, PUs typically show a microphases-separated morphology where the different electronic densities among SS and HS is responsible of the broad knee scattering feature present in their SAXS patterns. Thus, the interdomain distance between HS (L) can be estimated by using the Bragg's law:

$$L = 2\pi/q_{\max}$$

where, q_{\max} is the maximum of the intensity of the scattering vector (q), determined from the Lorentz corrected plot ($I(q) \cdot q^2 - q$). Moreover, the electron densities difference can be quantitatively evaluated by the invariant of scattering Q as follow:

$$Q = \int_0^{\infty} q^2 I(q) dq$$

The value of Q describes the electron density fluctuation of polymer and is a good approximation to estimate the overall degree of phase separation (DPS) in PU. [19,24]

SAXS profiles of the polyurethane composite foams and the corresponding Lorentz corrected plots are reported in Figure 2, while the values of q_{\max} , L and Q are listed in Table 2.

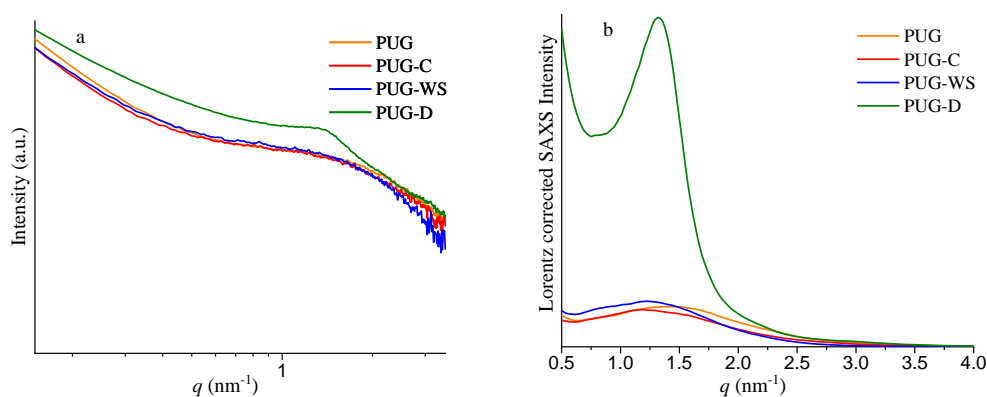


Figure 2 SAXS profiles (a) and corresponding Lorentz corrected plots (b) of the polyurethane composite foams PUG, PUG-C, PUG-WS and PUG-D.

Table 2. Values of the q_{\max} (nm^{-1}), L (nm), and Q for the polyurethane composite foams PUG, PUG-C, PUG-WS and PUG-D.

Sample	q_{\max} (nm^{-1})	L (nm)	Q
PUG	1.42	4.42	0.022
PUG-C	1.18	5.32	0.018
PUG-WS	1.22	5.15	0.020
PUG-D	1.32	4.76	0.102

The samples PUG-C and PUG-WS show values of L of 5.32 nm and 5.15 nm respectively, which are higher than the L value of 4.42 nm of the pristine PUG. Usually, an increase of the interdomain distance between HS is also related to an increase of the size of the domains and to an increase of the Q value. As reported in Table 2 the Q values for the PUG-C and PUG-WS are slightly lower than the Q value found for the PUG. These results can be reasonable with the formation of some urea and/or urethane hard domains in the PUG-C and PUG-WS, which are not incorporated with the polymer network [22] causing a disruption of the long range connectivity between the hard segments. These unattached urea/urethane-HS do not contribute to the phase separation degree in the polyurethane, because they are isolated domains and are more mobile than those within the PU microdomains, justifying the slightly decrease of the Q values and the increment of the L values of polyurethane composite foams containing C and WS as fillers.

SAXS analysis of the PUG-D system (Figure 2 and Table 2) demonstrates that the diatomite plays a completely different role from those observed for cellulose and walnut shell in the morphology of the PU. In fact, the presence of the D induces an increase of the interdomain distance (from 4.42 nm for the PUG to 4.76 nm for the PUG-D) and also an appreciable increment of the invariant of scattering Q (from 0.022 for the PUG to 0.102 for the PUG-D5) of the polymer. Therefore, the addition of the D as filler in the polyurethane foam induces a growth of the HS that participate to the polymer network resulting in an improvement in the degree of the microphase separation of the PU.

4.2. Infrared Spectroscopy (FTIR)

The effect of filler addition on chemical structure of polyurethane foams was also evaluated by FTIR-ATR investigation. The main absorption vibration peaks of polyurethane composite

foams (PUG-C, PUG-W and PUG-D) and pristine PUG are listed in Table 3. All the spectra highlight the disappearance of the characteristic NCO vibration peak (around 2270 cm^{-1}) associated to the isocyanate consumption inherent to the urethane linkage formation [9, 17, 25]. The characteristic band features of the mainly functional groups (urethanes and urea linkages), absorbed in the spectral region $1400\text{-}1800\text{ cm}^{-1}$, are analyzed and discussed and the main deconvoluted peaks are shown in Figure 3. For instance, as widely investigated [9, 19, 25, 26] in the $1600\text{-}1800\text{ cm}^{-1}$ wavenumber region, the carbonyl vibration bands are correlated to the urethane and urea linkages, *H*-bonded ($H\text{-C=O}$) or free $C=O$ ($f\text{-C=O}$) as summarized in the Table 3. Typically, $H\text{-C=O}$ linkages are due to the Hard domains (HS) present in the polyurethane structure formed between NH groups proton accepting (urethane or urea carbonyl), while the $f\text{-C=O}$ linkages can exist dispersed in Soft segment (SS) or in interphase domains (urea phase).

In this region, the pristine PUG highlighted a stretching vibration peak related to $H\text{-C=O}$ urethane linkages at 1716 cm^{-1} , for the composite foams (PUG-C, PUG-W and PUG-D) the carbonyl region is splitted into two peaks. The $H\text{-C=O}$ band of urethane disappears and the $f\text{-C=O}$ correlated to urethane (around $1724\text{-}1722\text{ cm}^{-1}$) and urea (around $1677\text{-}1673\text{ cm}^{-1}$) linkages display (see the deconvoluted spectra in Figure 2) [26]. We hypothesized that, the addition of fillers resulted in the decrease of the isocyanate (NCO) available to react with the polyol (to form HS) due to the reactions that can be occurred between the OH groups of fillers with NCO creating covalent-like bonds to the PU molecular chains. This leads to a decreasing of urethane density (reduction of $H\text{-C=O}$ in urethane linkages) and to the formation of new urethane chains ($f\text{-C=O}$) and urea domains ($f\text{-C=O}$) more flexible. [25-26]

Furthermore, the urethane domains for rigid polyurethane foams were also identified through the vibrational modes, ν_{as} C-N and δ N-H, around 1511 cm^{-1} for PUG samples, at lower wavenumber, 1509 cm^{-1} , for the PUG-C and PUG-W conversely an increasing in wavenumber was observed for the PUG-D (1516 cm^{-1}). This means that the addition of filler C and W induces a decreasing of networking in polyurethane structure, while the addition of D acts as cross-linking agent increasing the hardness of polyurethane chemical structure.

Apart from this, the spectra of PUG-C and PUG-W exhibit additional stretching vibration bands, around $1528\text{-}1539\text{ cm}^{-1}$ related to the NH of isolated urea domains (interphase) located in the polyurethane matrix that induce a reduction of the continuity of urethane structure.

Table 3. Assignments of the main IR bands of produced foams.

Assignment	Groups assignment	Wavenumber (cm ⁻¹)			
		PUG	PUG-C	PUG-W	PUG-D
ν_{as} C-N and δ N-H	Urethane linkages	1511	1509	1508	1516
ν_{as} C-N and δ N-H	Urea linkages	-	1539	1528	-
<i>Aromatic ring vibration</i>	Urethane structure	1594	1594	1595	1593
ν_s C=O	Urea bidentate	1611	1611	1611	1602
ν_s C=O	<i>f</i> -C=O urea	-	1677	1673	1677
ν_s C=O	<i>H</i> -C=O urethane	1716	-	-	-
ν_s C=O	<i>f</i> -C=O urethane	-	1722	1724	1724

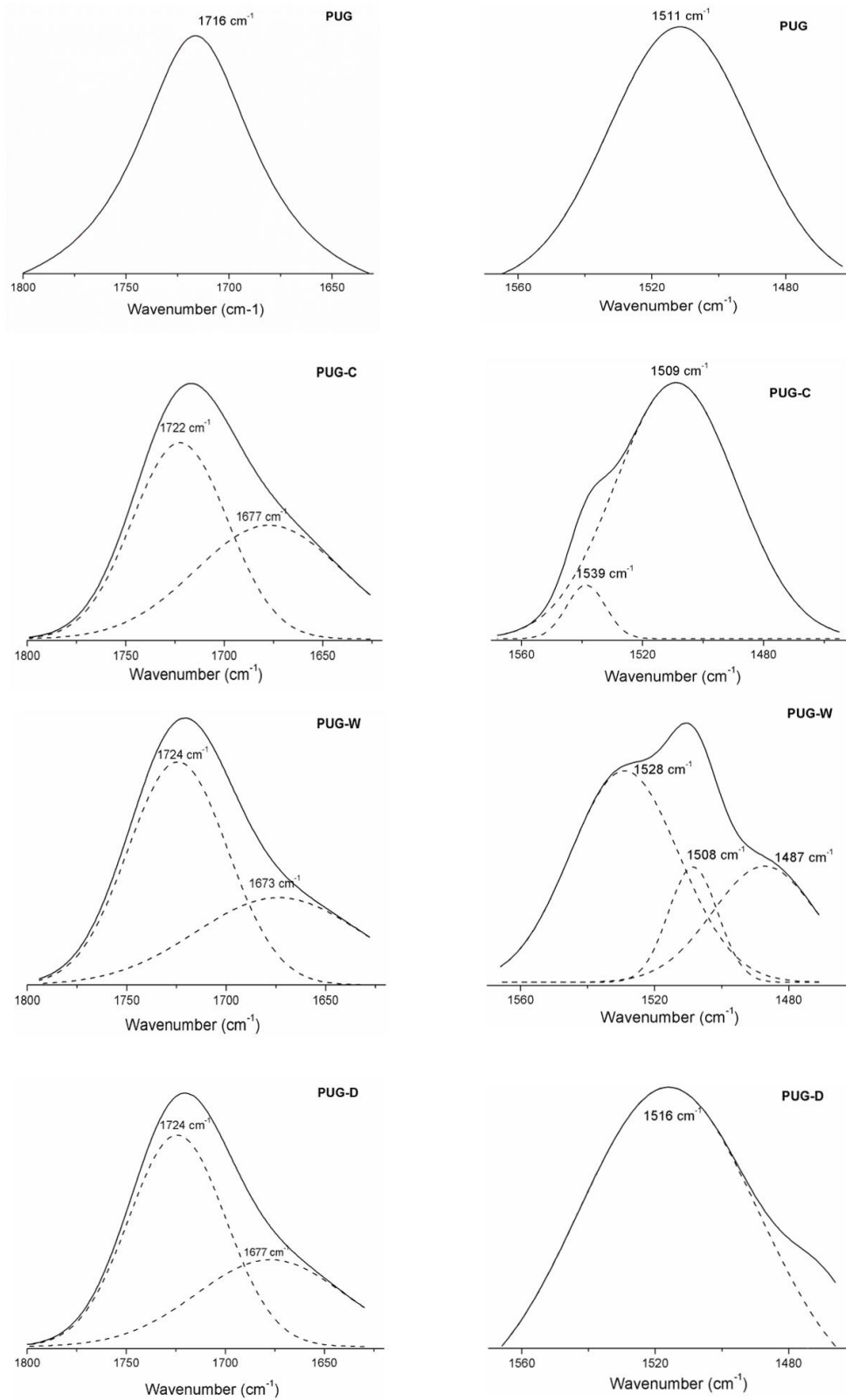


Figure 3: Deconvoluted spectra of produced foams

4.3. Scanning electron microscopy (SEM)

The microstructure of the produced polyurethane foams (PUG, PUG-C, PUG-WS and PUG-D) was analyzed by SEM in order to determine the effect of several fillers on Polyurethane morphology. The SEM micrographs, showed in the Figure 4a and 4b, highlighted a homogeneous microstructure with a closed-cell porosity well distributed within the polyurethane matrix.

The cell diameters of PUG cross-section surface range from 160μ to 250μ , an increase of mean cell size was observed for the PUG-C and PUG-WS, for instance $200\text{-}350\mu$ values were recorded.

Conversely, for PUG-D (Figure 4b) a decrease in cell size ($70\text{-}200\mu$) was observed, indeed for this composite material the diatomite was able to induce a nucleation effect reducing the cell dimension of foam. It is also possible to identify within the cell-struts of the PUG-D foam matrix the presence of diatomite filler able to give a 3D network entrapped in the cellular walls. The SEM micrographs of diatomite powder are shown in Figure 4a at high magnification. As can be observed, diatomite showed a very porous structure at nanometric scale ranging from $5\text{-}50\text{ nm}$ [28], typical sizes observed for aerogel structures. This typology of structure can considerably affect the thermal conductivity of the final composite foams. [17].

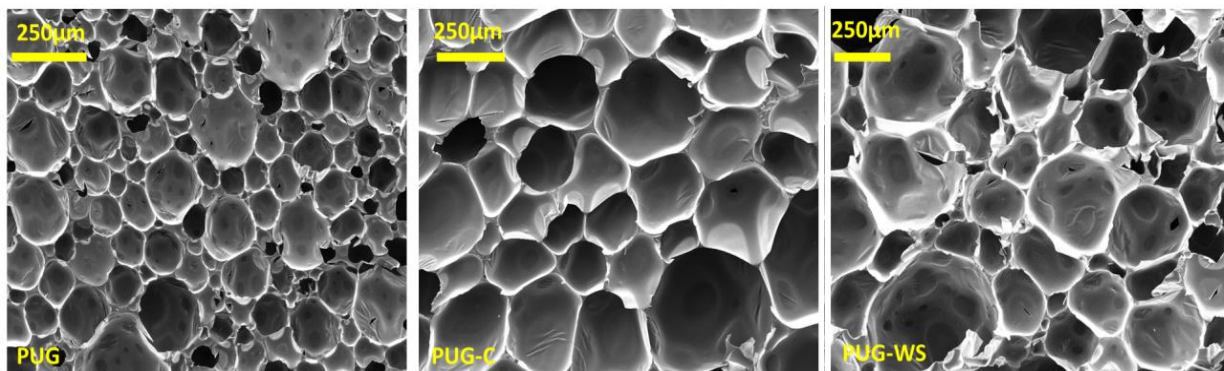


Figure 4a. SEM micrographs of pristine polyurethane (PUG) and of composite polyurethane (PUG-C and PUG-WS)

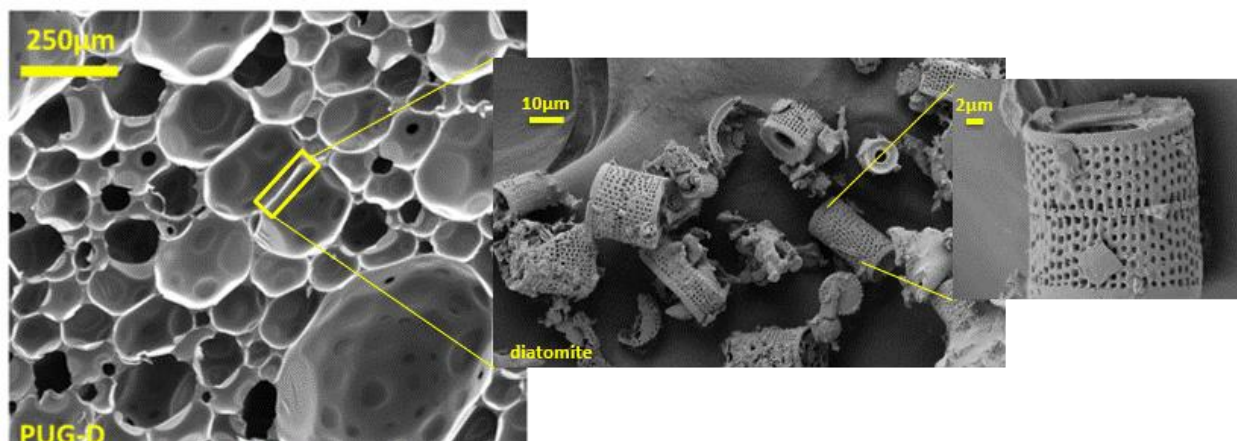


Figure 4b. SEM micrographs of PUG-D and the diatomite filler located within the cell-struts of polyurethane foam matrix

4.4. Thermal properties (TGA and thermal conductivity)

TGA analysis has been used as a tool to characterize the thermal degradation properties of polyurethane foams [29], it is important to point out that all the produced foams were manufactured without the addition of flame retardants. TGA results of produced samples are listed in Table 4. The thermograms of PUG and PUG composite foams show several degradation steps. The first degradation step occurs in the range 150–220 °C (maximum of the derivative weight loss, T_{m1} around 220 °C) with a weight loss equal to 6wt% attributed to the elimination of bound water molecules. The second step which occurs in the temperature range of 250–350 °C (with T_{m2} equal to 311) is ascribed to the breaking of urethane links: the isocyanate dimerises to form carbodiimide with evolution of volatiles compounds as CO₂, alcohols, amines, etc. The carbodiimide is stable up to higher temperature when it degrades giving rise to the subsequently degradation steps (T_{m3}).

As observed in Table 4, the maximum decomposition temperatures (T_m) of the foams increased with the addition of filler. The enhancement of thermal stability for PUG-C and PUG-W can be ascribed to the high thermal stability of all fillers [29-30].

Furthermore, it is important to point out that for the PUG-WS and PUG-D a marked increase of the char (around 21 and 22.4 wt% respectively) at high temperature (800°C) with respect to the pristine PUG was detected. For the PUG-WS, this result could be ascribed to the presence of lignin in the walnut shell composition. For the PUG-D the further enhancement can be attributed to the presence of diatomite (inorganic) domains, which are able to reduce

the amount of more-combustible organic molecules and to produce a siliceous layer that inhibits any mass transfer [17, 29, 30, 31] producing more char component.

Finally, the higher amount of char, produced during the pyrolysis of composite foam, can potentially inhibit flame propagation through the substrate of polyurethane.

The thermal conductivity values for the produced foams range around 31 mW/mk, while for the sample PUG-D (diatomite) a reduction of the thermal conductivity, 27 mW/mK, with respect to the other foams, was recorded. This result is consistent with the ones reported in the literature for foam composites filled with preformed aerogel particles; in this case the addition of diatomite reduces the thermal conductivity of the foams thanks to the intrinsic nanoporosity in its morphological structure. This behavior can be explained considering that the diatomite (located within the cell strut of the foam, see the micrographs in Figure 4b) due to its nanometric porosity (Figure 4b) includes voids into the solid phase of the cell-walls thus inducing a reduction of the radiative contribution λ_r of thermal conductivity. Generally, the thermal conductivity of a porous material can be described as a combination of different specific terms:

$$\lambda = \lambda_s + \lambda_g + \lambda_r + \lambda_c \text{ [W/(m}\cdot\text{K)]}$$

where:

- λ is the apparent thermal conductivity of the insulation material,
- λ_s is the thermal conduction through the solid structure of the pore walls,
- λ_g is the conduction through the gas-filled inside the pores,
- λ_r is the heat radiation through the cell walls
- λ_c is the convection within the cells, that is negligible.

The diatomite is able to reduce λ_r parameter.

DSC thermograms are reported in Figure 5 and the resulting data are summarized in Table 5. As observed in Figure 5, all the foams exhibit a glass transition temperature (T_g) around 26 °C for the pristine PUG and a cold crystallization temperature (T_{cc}) at 1.34 °C ascribed to the organized microphase (urea “nuclei”) present within the polyurethane foams.

By analyzing the DSC data of the composite foams a slight decreasing in T_g and an increase of T_{cc} were recorded. Furthermore, an increase of the enthalpy values correlated to the cold crystallization phenomenon was mainly found for the PUG-C and PUG-W. These outcomes could be explained considering that cellulose, walnut shell (in particular) and diatomite act

both as reactive fillers, subtracting isocyanate groups from the polyurethane reaction (because of the reaction of their OH groups with NCO) and thus causing a decrease in the cross-linking and consequently of T_g , and as nucleating agents leading to the increasing of T_{cc} and urea formation (ΔH). These confirm the SAXS/WAXS and FTIR analysis.

Table 4. Thermal properties from TGA and thermal conductivity of produced polyurethane foams.

Sample	DEGRADATION TEMPERATURE (°C)				WEIGHT RESIDUES @ T (wt%)				λ (W/mK)
	T_{max1}	T_{max2}	T_{max3}	T_{char}	T_{max1}	T_{max2}	T_{max3}	T_{char}	
PUG	222	311	406	800	5.38	24.75	15.89	18.8	0.031
PUG-C	222	317	451	800	5.6	37.8	43.5	17.1	0.033
PUG-W	222	316	451	800	7	30	42	21	0.032
PU-D	270	310	440	800	13	24.6	40	22.4	0.027

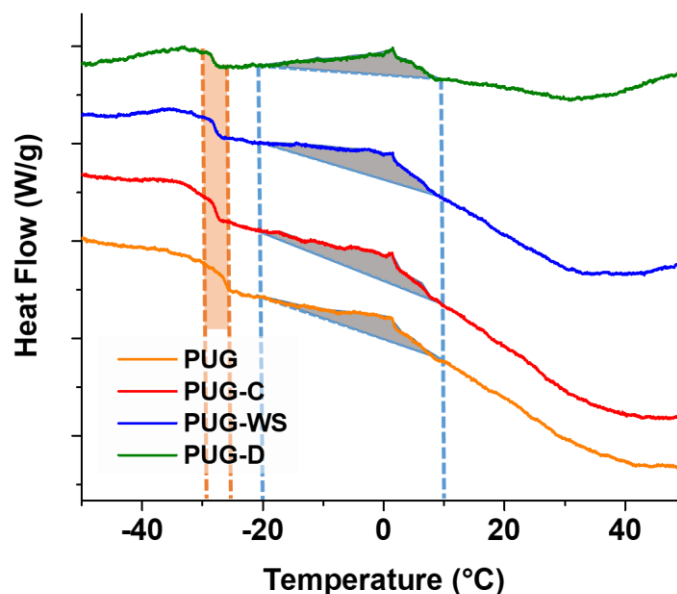


Figure 5. DSC thermograms of produced polyurethane foams.

Table 5: Glass Transition Temperatures and Enthalpy values at 0°C of produced polyurethane foams.

Sample	T _g (°C)	T _{cc} (°C)	ΔH(J/g)
PUG	-26.25	1.34	1.364
PUG-C	-27.78	1.39	1.821
PUG-WS	-27.54	1.48	1.934
PUG-D	-28.35	1.53	1.614

4.5. Mechanical properties

In order to evaluate the mechanical properties of PUG, PUG-C, PUG-WS and PUG-D polyurethane foams, compression tests were performed as well. The characteristic stress-strain curves of the analyzed materials are reported in Figure 6a. Each foam presents an elastomeric behavior, in which is possible to appreciate three different regimes: linear elasticity (LE), elastic buckling (plateau, EB) and densification (DE) [32-344]. Depending on the adopted filler, those ranges present different limits. In the cyan area, the empty symbols on the curve represent the LE-EB transition point experienced by each material. On the other hand, in the red area the empty symbols are representative of the EB-DE transition points. The mechanical properties and the mechanical behavior of the polyurethane foam matrices are affected by the presence of cellulose, walnut shell and diatomite fillers, each in different ways, as detailed hereafter.

The LE part of the curve is mostly correlated to the intrinsic bending properties of the bulk material that constitutes the cell walls, which is initially deformed when a compression force is applied. [32-34] In the inset of the Figure 6a it is possible to better appreciate the difference between the slopes of the initial linear part of each curve.

In the case of cellulose and walnut shell, the presence of the filler has a detrimental effect, in terms of elastic modulus and extent of the LE regime with respect to the pristine PUG foams. This can be ascribed to the chemical interaction of the aforementioned fillers with the PUG matrix, whose network results re-constructed, as also stated by SAXS-WAXS analysis. This kind of interaction has also induced the presence of cross-linked network with different crystalline domains, due to the presence of un-linked urea moieties (the urea is not bonded to the urethane polymer structure). Instead, when diatomite is added, the LE regime has the

lowest length, while the elastic modulus results the highest. This is strictly related to this kind of filler, which is ceramic and rigid. Thanks to the presence of some interactive OH groups, could interact with polyurethane structure (through isocyanate group) and alter the structure of the material (see the chemical characterization section), D filler enhances the stiffness of the material constituting the cell walls, being then well dispersed within the polymer matrix. This effect endows the bulk material with a completely new crystalline structure, involving the traditional polyurethanes cross-linking network and the different silica allotropic crystals of the diatomite, as stated by SAXS analysis.

The second part of the curve (EB) is characterized by the presence of a plateau. This behavior appears when the cell walls and edges of the foam, after being bent, start to distort, the foam cells appear to be twisted and the material loses its stiffness. [32-34] With respect to the PUG material, the others exhibit a transition point from LE regime to the EB one at lower stress and deformation values. From the EB portion of the stress-strain curve of the polyurethanes is possible to evaluate the so-called Plateau Modulus, which gives information on the chemical structure of the material constituting the cell walls, and not on the foam density. [32-34]

From the curves it is possible to notice that the presence of the two strongly chemically interacting fillers (cellulose and walnut shells) produces materials with lower Plateau Modulus with respect to PUG (Table 6), with PUG-C having a lower slope than PUG-WS. In case of PUG-D, the extent of EB regime is quite similar to the neat material, further proving that the diatomite filler does not alter the chemical structure of the PUG, since it is not seizing much reactive sites of the isocyanate, as cellulose and walnut shells do instead. In this area, the stress at 10% def. (σ_{10}) is evaluated. As expected, PUG-C and PUG-WS has lower values, while PUG and PUG-D has practically the same value. These results are also in agreement with X-ray analyses, where different cross-linked networks were detected.

After the EB regime, the transition to DE occurs. In this last area, the slope of the curve starts to increase, and the stress escalates. Here, the opposing foam cells walls touch, being almost completely collapsed. If further strain compresses the material, the elastic modulus of the solid itself could be approached. [32] In this study, the strain stops at 50% of deformation, so that the DE regime is just at its beginning.

Even though the foam cell structure can be appreciated from SEM analysis, the direct correlation between the cell walls or edges structure and mechanical properties is better

elucidated by the use of Gibson-Ashby model [32-33]. For this model Relative Young's Modulus and Relative Density must be considered. The first is given by the ratio between the elastic modulus of the foamed material (E) and the elastic modulus of the material constituting the cell walls (E_s), while the second is the ratio between the foam density (ρ) and the density of the cell wall material (ρ_s). Their relationship follows an exponential trend, as for the equation in Figure 6b, where the exponential n is a factor depending on the cell structure. [32]

In Figure the Relative Young's Modulus and Relative Density of the selected materials (empty symbols) are plotted. From these values, it is possible to obtain the n value at which the Gibson-Ashby model can be applied, and thus acquire information about the cell walls structure. For $n=2$ this model is representative of the ideal behavior of the so-called open-cell polymer foam, in which only cell edges, and no cell walls, are present in the foam arrangement. Despite most polyurethanes foams exhibit closed cells, their behavior follows the open-cell foams one, like in the cases studied here. This is related to the fact that, during manufacturing, the surface tension, which drives the formation of the cells foam, tends to let the material gather in the cell edges, leaving the cell walls thinned. Then, depending on the used filler, the behavior of each set of samples can be described by the Gibson-Ashby model, using different values of the exponent.

Therefore, in case of PUG, the exponent n results to be the highest, having less chemical discontinuities on the cell walls materials. In case of PUG-C and PUG-WS, the exponent n is lower than that observed for PUG, but it has almost the same value than that used in case of open-cell model. This can be attributed to the presence of the urea domains in the material, which are mostly condensed in the edges of the cells, leaving the cell walls so weak to be considered empty. Instead, in case of PUG-D, where the exponential has the lowest value, the diatomite acts as a filler, whose high stiffness is exploited in the inclusion in the polymer matrix constituting the cell edges, which will then result as the real supporting column of the foam structure.

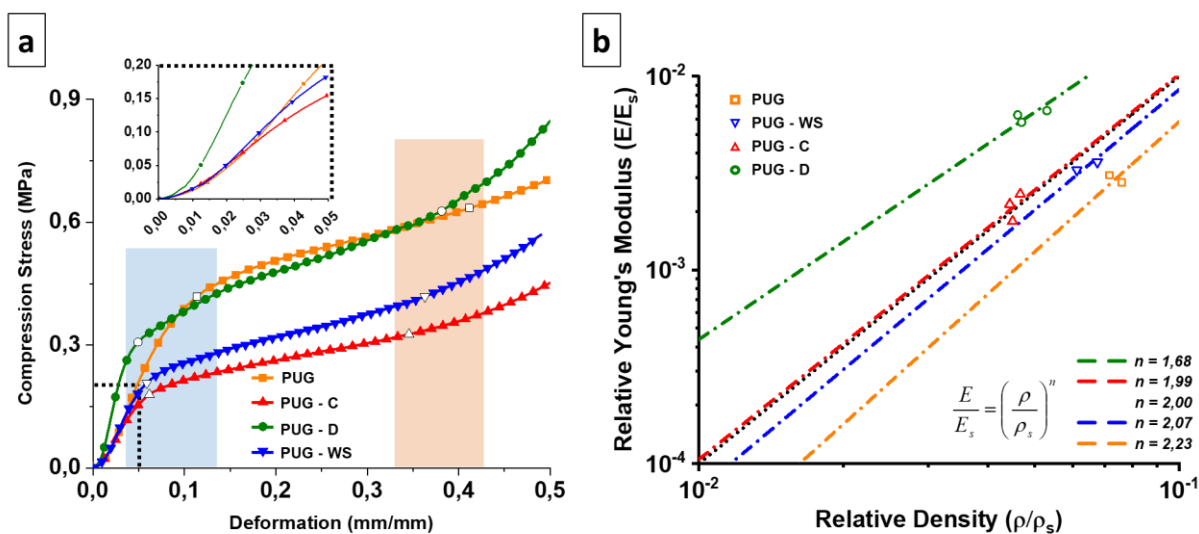


Figure 6. (a) Stress-strain curves and (b) graphical representation of Gibson-Ashby model of the foamed materials

Table 6: Mechanical and structural properties of the foams.

Sample	Young's Modulus (E) [MPa]	Density (ρ) [kg/m ³]	Cell wall density (ρ_s) [kg/m ³]	Stress at 10% def. (σ_{10}) [MPa]	Plateau Modulus (E_{pl}) [MPa]
PUG	4.730 ± 0.29	88.75 ± 2.66	1740	0.39 ± 0.02	0.621 ± 0.028
PUG-C	3.431 ± 0.547	86.17 ± 2.08	1890	0.22 ± 0.04	0.446 ± 0.036
PUG-D	9.996 ± 0.690	111.53 ± 8.66	2290	0.38 ± 0.02	0.753 ± 0.004
PUG-WS	5.501 ± 0.360	94.48 ± 4.69	1460	0.26 ± 0.04	0.587 ± 0.059

5. Conclusions

Sustainable Nanocomposite Polyurethane foams, were successfully produced starting from polyol Cardanol-based. Walnut shell, cellulose and diatomite were used as natural nano-filler to tune chemico-physical, morphological and mechanical characteristics. The results show that with respect pristine polyurethane foams, walnut shell and cellulose, through their OH groups, react with isocyanate precursor producing a “polyurethane-like” chemical structure which affect thermal properties, an increase in thermal stability was detected, and mechanical properties with an increase in stiffness as a flexible-like foams.

Diatomite powder acts as reinforcing filler because inducing an increase in stiffness thanks to the inclusion of filler in the polymer matrix constituting the cell edges, which will then result as the real supporting column of the foam structure. Furthermore, an improve in thermal stability with a prominent charring effect of the inorganic filler, and a reduction of thermal conductivity (around 13%) due to the decrease of cell-size microstructure and to presence of aerogel-like structure (diatomite) within the cell-struts of the foam, were also detected.

Acknowledgement: *The work was supported by the European project H2020-BBI-JTI-2017(BIO BASED INDUSTRIES PP); REINVENT, Grant Agreement Number: 792049. The authors are grateful to A. Aldi, F. Docimo and M. Marcedula for technical support.*

References

1. Anastas, P.T.; Warner, J.C. *Green Chemistry, Theory and Practice*, Oxford University Press, New York, 1998
2. Benessere, V.; Cucciolo, M.E.; De Santis, A.; Di Serio, M.; Esposito, R.; Melchiorre, M.; Nugnes, F.; Paduano, L.; Ruffo, F. A Sustainable Process for the Production of Varnishes Based on Pelargonic Acid Esters. *J. Am. Oil Chem. Soc.* **2019**, *96*, 443–451.
3. Zheng, J.-L.; Zhu, Y.-H.; Zhu, M.-Q., Sun, G.-T.; Sun, R.-C. Life-cycle assessment and techno-economic analysis of the utilization of bio-oil components for the production of three chemicals. *Green Chem.*, **2018**, *20*, 3287-3301.
4. Cherubini, F.; Stromman, A.H. Chemicals from lignocellulosic biomass: opportunities, perspectives, and potential of biorefinery systems. *Biofuel, Bioprod. Biorefin.* **2011**, *5*, 548-561.
5. *Green Polymer Chemistry: New Products, Processes, and Applications*. ACS Symposium Series, Ed. Cheng, H. N.; Gross, R.A.; Smith, P B. **2018**, *1310*
6. *Renew. Sust. Energ. Rev.* **2012**, *16*, 2070-2093.
7. Akindoyo, J.O.; Beg, M.D.H.; Ghazali, S.; Islam, M.R.; Jeyaratnam, N.; Yuvaraj, A.R. Polyurethane types, synthesis and applications – a review. *RSC Adv.* **2016**, *6*, 114453-114482.
8. Džunuzović, J. V.; Stefanović, I.S.; Džunuzović, E.S.; Dapčević, A.; Šešlija, S.I.; Balanč, B.D.; Lama G.C. Polyurethane networks based on polycaprolactone and hyperbranched polyester: Structural, thermal and mechanical investigation. *Progr. Org. Coat.* **2019**, *137*, 105305-105316.
9. Stanzione, M.; Russo, V.; Oliviero, M.; Verdolotti, L.; Sorrentino, A.; Di Serio, M.; Tesser, R.; Iannace, S.; Lavorgna, M. Synthesis and characterization of sustainable polyurethane foams based on polyhydroxyls with different terminal groups. *Polymer* **2018**, *149*, 134-145.
10. Verdolotti, L.; Di Maio, E.; Lavorgna, M.; Iannace, S. Hydration-induced reinforcement of rigid polyurethane-cement foams: Mechanical and functional properties. *J. Mater. Sci.* **2012**, *47*, 6948-6957.
11. Suresh, K.I. Rigid Polyurethane Foams from Cardanol: Synthesis, Structural Characterization, and Evaluation of Polyol and Foam Properties, *ACS Sust. Chem. Eng.* **2013**, *1*, 232-242
12. Klemm, D.; Heublein, B.; Fink, H-P.; Bohn, A. Cellulose: Fascinating Biopolymer and Sustainable Raw Material. *Angew. Chem. Int. Ed.* **2005**, *44*, 3358 – 3393.
13. Ibrahim, S. S.; Selim, A. Q. Heat treatment of natural diatomite. *Physicochem. Probl. Miner. Process.* **2012**, *48*, 413–424
14. Lirer, S.; Flora, A.; Evangelista, A.; Verdolotti, L.; Lavorgna, M.; Iannace, S. Permeation grouting of a fine-grained pyroclastic soil. *Ground Improvement*. **2006** *10(4)*, 135-145.
15. Surech, K.I.; Kishanprasad, A.S. Synthesis, Structure, and Properties of Novel Polyols from Cardanol and Developed Polyurethanes. *Ind. Eng. Chem. Res.* **2005**, *44*, 4504-4512.
16. Zhang, Y.; Ma, J.; Bai, Y.; Wen, Y.; Zhao, N.; Zhang, X.; Zhang, Y.; Li, Q.; Wei, L. The Preparation and Properties of Nanocomposite from Bio-Based Polyurethane and Graphene Oxide for Gas Separation. *Nanomaterials* **2019**, *9*, 2-11.

17. Verdolotti, L.; Lavorgna, M.; Lamanna, R.; Di Maio, E.; Iannace, S. Polyurethane-silica hybrid foam by sol-gel approach: Chemical and functional properties. *Polymer* **2015**, *56*, 20-28.
18. Laity, P.R.; Taylor, J.E.; Wong, S.S.; Khunkamchoo, P.; Norris, K.; Cable, M.; Andrews, G.T.; Johnson, A.F.; Cameron, R.E. A 2-dimensional small-angle X-ray scattering study of the microphase-separated morphology exhibited by thermoplastic polyurethanes and its response to deformation. *Polymer* **2004**, *45*, 5215–5232.
19. Neff, R.; Adedeji, A.; Macosko, C W.; Ryan, A. J. Urea hard segment morphology in flexible polyurethane foam. *J. Polym. Sci. Polym. Phys.* **1998**, *36*, 573-581.
20. Koberstein J. T.; Stein, R. S. Small-angle X-ray scattering studies of microdomain structure in segmented polyurethane elastomers. *J. Polym. Sci. Polym. Phys.* **1983**, *21*, 1439-1472.
21. Elwell, M. J.; Mortimer, S.; Ryan, A. J. A Synchrotron SAXS Study of Structure Development Kinetics during the Reactive Processing of Flexible Polyurethane Foam. *Macromolecules* **1994**, *27*, 5428-5439.
22. Ping, P.; Wang, W.; Chen, X.; Jing, X. The Influence of Hard-Segments on Two-Phase Structure and Shape Memory Properties of PCL-Based Segmented Polyurethanes. *J. Polym. Sci. Polym. Phys.* **2007**, *45*, 557–570.
23. Russo, P.; Lavorgna, M.; Piscitelli, F.; Acierno, D.; Di Maio, L. Thermoplastic polyurethane films reinforced with carbon nanotubes: The effect of processing on the structure and mechanical properties. *Eur. Polym. J.* **2013**, *49*, 379–388.
24. Zhan, Y. H.; Patel, R.; Lavorgna, M.; Piscitelli, F.; Khan, A.; Xia, H. S.; Benkreira, H.; Coates, P. Processing of polyurethane/carbon nanotubes composites using novel minimixer. *Plast., Rubber Compos.* **2010**, *39*, 400-410.
25. Manjula Dhevi, D.; Anand Prabu, A.; Kim, K.J. *Polym. Bull.* **2016**, *73*, 2867–2888
26. Das, S.; Yilgor, I.; Yilgor, E.; Wilkes, G.L. Probing the urea hard domain connectivity in segmented, non-chain extended polyureas using hydrogen-bond screening agents. *Polymer* **2008**, *49*, 174-179.
27. Huang, X.; De Hoop, C.F.; Xie, J.; Wu, Q.; Boldor, D.; Qi, J. High bio-content polyurethane (PU) foam made from bio-polyol and cellulose nanocrystals (CNCs) via microwave liquefaction, *Mater. Des.* **2018**, *138*, 11-20.
28. Capasso, I.; Liguori, B.; Verdolotti, L.; Caputo, D.; Lavorgna, M.; Tervoort, E.; Studart, A.R. Process strategy to fabricate a hierarchical porosity gradient in diatomite-based foams by 3D printing. **2020**, *Scientific Report*, accepted.
29. Verdolotti, L.; Oliviero, M.; Lavorgna, M.; Iannace, S.; Camino, G.; Vollaro, P.; Frache A. On revealing the effect of alkaline lignin and ammonium polyphosphate additives on fire retardant properties of sustainable zein-based composites. *Polym. Degrad. Stab.* **2016**, *134*, 115-125.
30. Oliviero, M.; Rizvi, R.; Verdolotti, L.; S. Iannace, H.E. Naguib, E. Di Maio, H.C. Neitzert, G. Landi (2017). Dielectric Properties of Sustainable Nanocomposites based on Zein Protein and Lignin as biodegradable insulators. *Adv. Funct. Mater.* **2017**, *27*, 1-9.
31. Piscitelli, F.; Buonocore, GG.; Lavorgna, M.; Verdolotti, L.; Pricl, S.; Gentile, G., Mascia, L. Peculiarities in the structure–Properties relationship of epoxy-silica hybrids with highly organic siloxane domains. *Polymer*, **2015**, *63*, 222-229.

32. Gibson, L.J.; Ashby, M. F. Cellular solids - Structure and properties (second edition). Cambridge University Press, 2001; ISBN 0-521-49911-9.
33. Ashby, M. F.; Mehl Medalist, R.F. The mechanical properties of cellular solids. *Metall. Trans. A* **1983**, *14*, 1755-1769.
34. Gibson, L. J., Ashby, M. F., Schajer, G. S., Robertson, C. I. The mechanics of two-dimensional cellular materials. Proceedings of the Royal Society of London. A. Mathematical and Physical Sciences. **1982**, *382*, 25-42.