

Supplementary Table 1. The number of suicide deaths (X60-X84 and Y87.0) from the National Death Records.

Year	M-P		O-S-T		A-F-F		SKL		USL	
	Male	Female	Male	Female	Male	Female	Male	Female	Male	Female
2003	83 (1.2%)	19 (1.1%)	1084 (5.7%)	239 (3.9%)	632 (10.9%)	133 (12.6%)	637 (7.9%)	48 (10.6%)	351 (5.4%)	25 (4.0%)
2004	94 (1.4%)	31 (1.8%)	1125 (5.9%)	228 (3.7%)	617 (10.6%)	127 (12.0%)	626 (7.7%)	27 (6.0%)	371 (5.7%)	29 (4.6%)
2005	127 (1.9%)	34 (2.0%)	1087 (5.7%)	337 (5.5%)	550 (9.5%)	114 (10.8%)	588 (7.3%)	33 (7.3%)	313 (4.8%)	29 (4.6%)
2006	101 (1.5%)	27 (1.6%)	1011 (5.3%)	238 (3.9%)	445 (7.6%)	92 (8.7%)	487 (6.0%)	28 (6.2%)	261 (4.0%)	14 (2.2%)
2007	117 (1.7%)	62 (3.7%)	1029 (5.4%)	413 (6.7%)	438 (7.5%)	83 (7.9%)	491 (6.1%)	70 (15.5%)	230 (3.5%)	38 (6.0%)
2008	322 (4.7%)	121 (7.1%)	1075 (5.7%)	484 (7.9%)	377 (6.5%)	82 (7.8%)	410 (5.1%)	28 (6.2%)	301 (4.6%)	37 (5.9%)
2009	526 (7.7%)	189 (11.1%)	1465 (7.7%)	586 (9.5%)	385 (6.6%)	74 (7.0%)	479 (5.9%)	25 (5.5%)	394 (6.0%)	36 (5.7%)
2010	585 (8.6%)	168 (9.9%)	1530 (8.1%)	518 (8.4%)	399 (6.9%)	69 (6.5%)	447 (5.5%)	18 (4.0%)	354 (5.4%)	33 (5.2%)
2011	529 (7.8%)	161 (9.5%)	1613 (8.5%)	478 (7.8%)	397 (6.8%)	66 (6.2%)	523 (6.5%)	16 (3.5%)	387 (5.9%)	30 (4.8%)
2012	598 (8.8%)	129 (7.6%)	1387 (7.3%)	445 (7.2%)	330 (5.7%)	57 (5.4%)	518 (6.4%)	26 (5.8%)	487 (7.4%)	62 (9.9%)
2013	768 (11.3%)	164 (9.7%)	1432 (7.6%)	444 (7.2%)	333 (5.7%)	46 (4.4%)	616 (7.6%)	22 (4.9%)	599 (9.2%)	69 (11.0%)
2014	757 (11.1%)	172 (10.1%)	1443 (7.6%)	440 (7.2%)	251 (4.3%)	34 (3.2%)	580 (7.2%)	36 (8.0%)	674 (10.3%)	66 (10.5%)
2015	728 (10.7%)	137 (8.1%)	1276 (6.7%)	425 (6.9%)	242 (4.2%)	33 (3.1%)	608 (7.5%)	29 (6.4%)	631 (9.6%)	50 (7.9%)
2016	762 (11.2%)	149 (8.8%)	1197 (6.3%)	452 (7.4%)	218 (3.7%)	22 (2.1%)	555 (6.9%)	29 (6.4%)	634 (9.7%)	56 (8.9%)
2017	727 (10.7%)	134 (7.9%)	1159 (6.1%)	414 (6.7%)	205 (3.5%)	24 (2.3%)	513 (6.4%)	17 (3.8%)	555 (8.5%)	55 (8.7%)

¹The ratio of the mortality of workers age 15-64 to the general population age 15-64, including workers and non-workers. The 95% confidence intervals are calculated by the Vandembroucke method. ²The number of deaths where the population is assumed to be 1,000,000. ³**M-P:** Manager-Professional, **O-S-T:** Officer-Service-Trade, **A-F-F:** Agriculture-Forestry-Fishery, **SKL:** Skilled manual labor, **USL:** Unskilled manual labor.

Supplementary Table 2. The number of suicide by pesticide deaths (X68) from the National Death Records.

Year	M-P		O-S-T		A-F-F		SKL		USL	
	Male	Female	Male	Female	Male	Female	Male	Female	Male	Female
2003	14 (3.9%)	5 (9.8%)	260 (14.8%)	102 (19.2%)	373 (12.4%)	83 (12.3%)	159 (15.9%)	16 (29.6%)	116 (12.3%)	10 (10.0%)
2004	11 (3.1%)	4 (7.8%)	262 (14.9%)	70 (13.2%)	395 (13.1%)	95 (14.1%)	160 (16.0%)	9 (16.7%)	113 (12.0%)	12 (12.0%)
2005	17 (4.8%)	2 (3.9%)	183 (10.4%)	47 (8.8%)	334 (11.1%)	81 (12.0%)	127 (12.7%)	6 (11.1%)	70 (7.4%)	7 (7.0%)
2006	13 (3.7%)	2 (3.9%)	152 (8.7%)	38 (7.1%)	267 (8.9%)	65 (9.6%)	88 (8.8%)	2 (3.7%)	75 (8.0%)	3 (3.0%)
2007	15 (4.2%)	0 (0.0%)	151 (8.6%)	34 (6.4%)	286 (9.5%)	56 (8.3%)	92 (9.2%)	5 (9.3%)	50 (5.3%)	10 (10.0%)
2008	33 (9.3%)	6 (11.8%)	139 (7.9%)	52 (9.8%)	220 (7.3%)	58 (8.6%)	65 (6.5%)	5 (9.3%)	67 (7.1%)	11 (11.0%)
2009	55 (15.5%)	8 (15.7%)	138 (7.9%)	43 (8.1%)	226 (7.5%)	51 (7.6%)	61 (6.1%)	2 (3.7%)	73 (7.8%)	13 (13.0%)
2010	38 (10.7%)	6 (11.8%)	122 (6.9%)	35 (6.6%)	214 (7.1%)	42 (6.2%)	52 (5.2%)	2 (3.7%)	77 (8.2%)	1 (1.0%)
2011	47 (13.2%)	7 (13.7%)	122 (6.9%)	38 (7.1%)	206 (6.9%)	47 (7.0%)	51 (5.1%)	4 (7.4%)	68 (7.2%)	6 (6.0%)
2012	30 (8.5%)	3 (5.9%)	86 (4.9%)	20 (3.8%)	156 (5.2%)	38 (5.6%)	38 (3.8%)	1 (1.9%)	55 (5.9%)	14 (14.0%)
2013	27 (7.6%)	3 (5.9%)	43 (2.4%)	10 (1.9%)	119 (4.0%)	22 (3.3%)	30 (3.0%)	1 (1.9%)	45 (4.8%)	4 (4.0%)
2014	16 (4.5%)	2 (3.9%)	33 (1.9%)	7 (1.3%)	75 (2.5%)	15 (2.2%)	25 (2.5%)	0 (0.0%)	41 (4.4%)	3 (3.0%)
2015	14 (3.9%)	0 (0.0%)	23 (1.3%)	12 (2.3%)	53 (1.8%)	8 (1.2%)	25 (2.5%)	1 (1.9%)	27 (2.9%)	1 (1.0%)
2016	14 (3.9%)	0 (0.0%)	21 (1.2%)	13 (2.4%)	49 (1.6%)	6 (0.9%)	14 (1.4%)	0 (0.0%)	40 (4.3%)	2 (2.0%)
2017	11 (3.1%)	3 (5.9%)	21 (1.2%)	11 (2.1%)	32 (1.1%)	8 (1.2%)	14 (1.4%)	0 (0.0%)	23 (2.4%)	3 (3.0%)

¹The ratio of the mortality of workers age 15-64 to the general population age 15-64, including workers and non-workers. The 95% confidence intervals are calculated by the Vandenbroucke method. ²The number of deaths where the population is assumed to be 1,000,000. ³**M-P**: Manager-Professional, **O-S-T**: Officer-Service-Trade, **A-F-F**: Agriculture-Forestry-Fishery, **SKL**: Skilled manual labor, **USL**: Unskilled manual labor.

Supplementary Table 3. The population of occupational groups by year from the Economically Active Population Survey over the 15-year period.

Year	M-P		O-S-T		A-F-F		SKL		USL	
	Male	Female	Male	Female	Male	Female	Male	Female	Male	Female
2003	29596 (5.1%)	16816 (3.7%)	82119 (7.7%)	109485 (7.7%)	18957 (9.9%)	16672 (11.7%)	118521 (8.8%)	30737 (11.3%)	25211 (7.2%)	23082 (6.0%)
2004	28120 (4.8%)	16450 (3.6%)	75907 (7.1%)	108357 (7.7%)	17164 (9.0%)	14893 (10.4%)	119101 (8.8%)	30303 (11.1%)	25266 (7.2%)	23089 (6.0%)
2005	28274 (4.8%)	17578 (3.9%)	73559 (6.9%)	108368 (7.7%)	15880 (8.3%)	13671 (9.6%)	117421 (8.7%)	29496 (10.8%)	24463 (6.9%)	22801 (5.9%)
2006	28747 (4.9%)	18153 (4.0%)	71931 (6.7%)	106954 (7.6%)	14500 (7.6%)	12809 (9.0%)	117232 (8.7%)	30297 (11.1%)	24221 (6.9%)	23279 (6.1%)
2007	27944 (4.8%)	17580 (3.9%)	68447 (6.4%)	101711 (7.2%)	13433 (7.0%)	12034 (8.4%)	114126 (8.4%)	29497 (10.8%)	24594 (7.0%)	22994 (6.0%)
2008	49854 (8.5%)	34266 (7.6%)	73695 (6.9%)	96317 (6.8%)	13564 (7.1%)	11202 (7.9%)	80805 (6.0%)	13893 (5.1%)	25184 (7.2%)	28284 (7.4%)
2009	49020 (8.4%)	36120 (8.0%)	74809 (7.0%)	96170 (6.8%)	13531 (7.1%)	10586 (7.4%)	80053 (5.9%)	12753 (4.7%)	26095 (7.4%)	30491 (7.9%)
2010	48150 (8.2%)	36669 (8.1%)	71725 (6.7%)	93885 (6.6%)	13168 (6.9%)	9444 (6.6%)	80738 (6.0%)	13100 (4.8%)	25027 (7.1%)	30051 (7.8%)
2011	46174 (7.9%)	36431 (8.1%)	71362 (6.7%)	90959 (6.4%)	12364 (6.5%)	9079 (6.4%)	79101 (5.9%)	12825 (4.7%)	24327 (6.9%)	29687 (7.7%)
2012	44534 (7.6%)	36082 (8.0%)	70560 (6.6%)	89999 (6.4%)	11683 (6.1%)	8409 (5.9%)	77674 (5.7%)	12867 (4.7%)	22486 (6.4%)	27777 (7.2%)
2013	43439 (7.4%)	36797 (8.1%)	70628 (6.6%)	87646 (6.2%)	11016 (5.8%)	8331 (5.8%)	76429 (5.7%)	12596 (4.6%)	21384 (6.1%)	26610 (6.9%)
2014	42580 (7.3%)	37083 (8.2%)	69706 (6.5%)	87671 (6.2%)	10140 (5.3%)	7462 (5.2%)	74747 (5.5%)	12122 (4.4%)	21355 (6.1%)	24944 (6.5%)
2015	40015 (6.8%)	36914 (8.2%)	66883 (6.2%)	80319 (5.7%)	8932 (4.7%)	3327 (2.3%)	73949 (5.5%)	11171 (4.1%)	21304 (6.0%)	24359 (6.3%)
2016	38835 (6.6%)	36858 (8.2%)	64659 (6.0%)	78693 (5.6%)	8196 (4.3%)	2564 (1.8%)	71475 (5.3%)	10759 (3.9%)	20285 (5.8%)	23342 (6.1%)
2017	39589	38025	66037	79319	8444 (4.4%)	2129 (1.5%)	70542	10719	20942	23034

(6.8%) (8.4%) (6.2%) (5.6%) (5.2%) (3.9%) (5.9%) (6.0%)

¹The ratio of the mortality of workers age 15-64 to the general population age 15-64, including workers and non-workers. The 95% confidence intervals are calculated by the Vandenbroucke method. ²The number of deaths where the population is assumed to be 1,000,000. ²**M-P:** Manager-Professional, **O-S-T:** Officer-Service-Trade, **A-F-F:** Agriculture-Forestry-Fishery, **SKL:** Skilled manual labor, **USLUSL:** Unskilled manual labor.

Supplementary Table 4. The crude suicide and suicide by pesticide rates of the population age 15-64 by sex, including workers and non-workers, per 1,000,000.

Year ¹	Suicide Rate		Suicide by Pesticide Rate	
	Male	Female	Male	Female
2003	303.1	103.1	90.2	41.5
2004	309.2	103.6	93.5	38.7
2005	310.8	128.7	76.5	31.0
2006	276.4	100.5	61.4	25.9
2007	286.9	150.3	62.0	23.6
2008	300.5	155.2	56.5	23.0
2009	374.7	183.3	52.7	21.3
2010	380.3	171.7	50.7	17.1
2011	402.9	159.2	46.5	19.5
2012	354.3	134.1	35.1	14.7
2013	350.8	129.2	21.1	7.9
2014	346.3	126.1	15.7	5.0
2015	321.9	111.4	12.9	4.0
2016	312.7	117.0	12.1	4.5
2017	301.7	108.8	9.5	4.5

¹The reference populations of 2005, 2010, and 2015 were used for each five-year period (2003-2007, 2008-2012, and 2013-2017).

Supplementary Table 5. The crude suicide and suicide by pesticide rates of the population age 15-64 by age, including workers and non-workers, per 1,000,000.

Year ¹	Suicide Rate										Suicide by Pesticide Rate									
	15-19	20-24	25-29	30-34	35-39	40-44	45-49	50-54	55-59	60-64	15-19	20-24	25-29	30-34	35-39	40-44	45-49	50-54	55-59	60-64
2003	47.7	104.6	147.3	186.8	214.5	249.8	232.5	263.0	308.1	407.1	9.4	21.8	39.8	53.0	68.3	79.6	80.5	91.1	118.1	160.4
2004	33.5	91.5	126.1	155.3	214.7	256.4	267.6	296.6	346.3	440.5	5.8	19.1	26.4	37.6	58.6	79.1	90.5	108.9	142.2	181.6
2005	46.1	130.3	171.8	189.2	211.0	235.7	283.5	307.1	319.5	454.8	4.5	10.1	19.3	32.2	48.1	58.7	73.8	89.0	100.5	186.9
2006	34.2	84.4	136.2	131.1	175.6	202.0	257.1	307.5	326.1	396.0	2.6	5.5	11.2	19.3	33.6	45.8	66.1	84.1	104.5	140.3
2007	46.4	131.9	213.8	198.2	201.1	222.2	272.5	305.4	325.2	394.9	1.6	4.9	11.7	16.6	31.4	45.4	63.3	81.3	102.7	151.4
2008	41.0	158.7	245.8	205.7	258.6	237.0	286.3	255.7	288.4	331.8	2.6	6.9	11.6	17.9	34.6	45.3	59.7	56.9	84.9	104.9
2009	56.1	164.0	284.0	286.8	300.1	287.6	332.4	361.8	340.1	411.5	2.0	7.2	7.6	14.1	26.3	32.2	56.5	68.7	78.1	109.1
2010	40.1	145.6	266.2	273.6	278.8	299.2	347.1	357.8	379.2	415.6	0.9	2.0	7.3	16.8	22.2	31.5	53.0	57.1	73.7	105.9
2011	45.1	137.5	257.7	275.2	278.6	310.3	319.6	391.0	414.2	442.7	1.2	4.6	7.1	11.1	19.0	29.8	40.8	66.3	79.2	105.9
2012	38.1	107.0	187.1	256.5	227.6	286.6	290.4	340.2	373.0	389.1	2.0	1.6	2.3	8.1	12.2	21.8	32.4	50.3	60.0	87.5
2013	39.4	94.9	172.4	257.4	258.0	296.6	287.8	345.7	300.7	309.4	0.3	0.8	0.3	3.1	6.4	9.9	19.1	27.2	32.6	48.2
2014	42.6	94.3	180.1	243.2	247.3	294.8	291.2	344.8	291.1	294.5	0.3	0.8	0.6	3.1	3.6	7.1	12.5	21.1	22.5	34.0
2015	29.7	94.0	147.0	201.8	219.0	255.4	277.3	300.0	304.3	312.3	0.3	0.6	0.6	1.8	2.0	3.5	9.6	16.2	22.2	31.2
2016	40.4	93.7	154.4	205.4	212.1	254.2	263.9	277.9	309.3	319.0	0.3	0.3	1.2	1.0	2.3	4.6	8.7	11.7	24.0	33.0
2017	33.2	95.2	149.8	174.5	225.4	220.3	271.9	265.5	294.9	305.5	0.3	0.3	0.3	0.8	0.8	3.2	6.8	10.8	18.4	32.6

¹The reference populations of 2005, 2010, and 2015 were used for each five-year period (2003-2007, 2008-2012, and 2013-2017).

Supplementary Table 6. The suicide overall and suicide by pesticide rates of the population age 15-64 by occupational groups per 1,000,000.

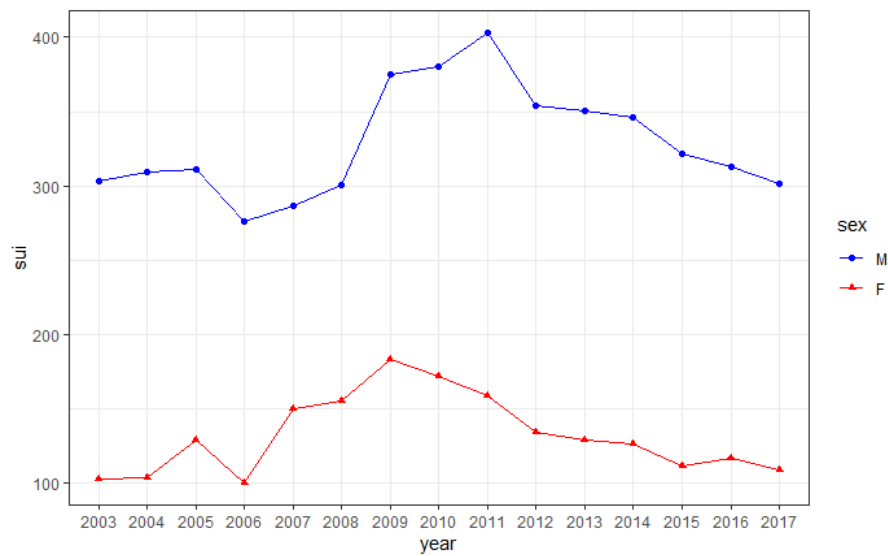
Year	Suicide Overall					Suicide by Pesticide				
	M-P	O-S-T	A-F-F	SKL	USLUSL	M-P	O-S-T	A-F-F	SKL	USLUSL
2003	46 (37.8-56)	158 (150.1-167.2)	631 (586.6-676.1)	102 (95-110.4)	187 (168.3-206.2)	8 (4.8-12.7)	43 (38.9-47.9)	376 (341.8-410.9)	26 (22.4-30.1)	62 (51.8-73.7)
2004	57 (47.6-67.8)	162 (153.4-170.7)	680 (631.2-728.9)	93 (86.5-100.9)	193 (174.3-212.1)	6 (3.4-10.4)	39 (35.5-44)	447 (408.2-487.5)	24 (20.6-27.9)	60 (49.8-71)
2005	71 (60.1-82.1)	169 (160.9-178.6)	653 (603.5-702.9)	88 (81.7-95.7)	165 (147.8-182.8)	8 (4.6-12.2)	27 (23.9-31)	408 (369-447.5)	19 (15.8-22.2)	37 (28.9-45.5)
2006	53 (44.5-63.1)	149 (140.8-157.3)	558 (511-605.4)	71 (65.5-77.8)	129 (114.3-144.9)	6 (3.1-9.5)	22 (19.4-25.9)	345 (308-382.2)	12 (9.9-15.1)	36 (28.6-44.9)
2007	73 (62.5-83.9)	173 (164.3-182.2)	571 (522.1-620.2)	77 (70.6-83.4)	120 (106.3-135.3)	6 (3-9.2)	22 (19-25.4)	374 (335.2-414.7)	13 (10.7-16)	27 (20.2-33.9)
2008	92 (84.2-101.5)	175 (166.9-184.4)	513 (466.8-560.8)	91 (83.1-100.3)	131 (117.3-145.3)	8 (5.6-10.7)	21 (18.5-24.6)	311 (274.6-347.7)	14 (11.2-18.1)	30 (23.6-37)
2009	148 (137.8-159.6)	231 (221.8-241.8)	529 (480.7-577.5)	109 (100-119.1)	162 (147.5-178.3)	13 (9.9-16.3)	20 (17.5-23.4)	319 (281.7-356.9)	13 (10.3-17.1)	32 (25.7-39.5)
2010	151 (140.8-162.5)	231 (221.7-241.8)	568 (516.9-619.9)	97 (88.3-106)	143 (129.6-158.2)	8 (6.2-11.5)	17 (15-20.5)	310 (272.8-349)	11 (8.3-14.3)	29 (22.6-35.4)
2011	137 (126.8-147.3)	230 (220.7-240.4)	577 (525.1-630.4)	110 (101.5-120.2)	152 (138-167.3)	10 (7.9-13.6)	17 (14.9-20.4)	315 (276.8-354.6)	11 (8.3-14.3)	27 (20.9-33.3)
2012	142 (132.4-153.1)	196 (187.1-205.1)	492 (443.5-541.6)	109 (100.2-118.6)	209 (191.6-226.5)	6 (4.3-8.7)	11 (9.2-13.5)	246 (212.2-281.6)	7 (5.4-10.3)	26 (20.1-32.5)
2013	179 (167.6-190.6)	198 (189.5-207.4)	490 (440.7-539.4)	127 (117.2-136.9)	257 (237.7-276.7)	5 (3.7-7.8)	5 (4.1-7.1)	182 (152.2-212.4)	6 (4-8.3)	18 (13.6-24.1)
2014	173 (162.2-184.5)	193 (184.7-202.2)	392 (347.1-438.3)	120 (111.2-130.3)	282 (261.9-302.6)	3 (1.8-4.9)	4 (2.8-5.4)	124 (98.4-149.6)	4 (3-6.8)	16 (11.8-21.7)
2015	161 (150.8-172.3)	179 (171.2-188.3)	534 (470.9-597.1)	122 (113-132)	256 (237-275.5)	2 (1.2-4)	3 (2.5-4.9)	118 (88.7-148.2)	5 (3.1-6.9)	10 (6.6-14.4)
2016	167 (156.9-178.7)	172 (164-180.6)	514 (449.1-579.2)	112 (103-121.2)	264 (244.6-284.1)	2 (1.2-3.9)	3 (2.4-4.7)	117 (86.7-149)	2 (1.3-4.1)	16 (11.2-21)
2017	155 (145.3-	162 (154.2-	488 (425.6-	102 (93.7-	230 (211.8-	2 (1.2-3.9)	3 (2.2-4.4)	85 (58.9-	2 (1.3-4.1)	9 (6-13.6)

166.1)	170.2)	552.2)	111.1)	248.3)	111.9)
--------	--------	--------	--------	--------	--------

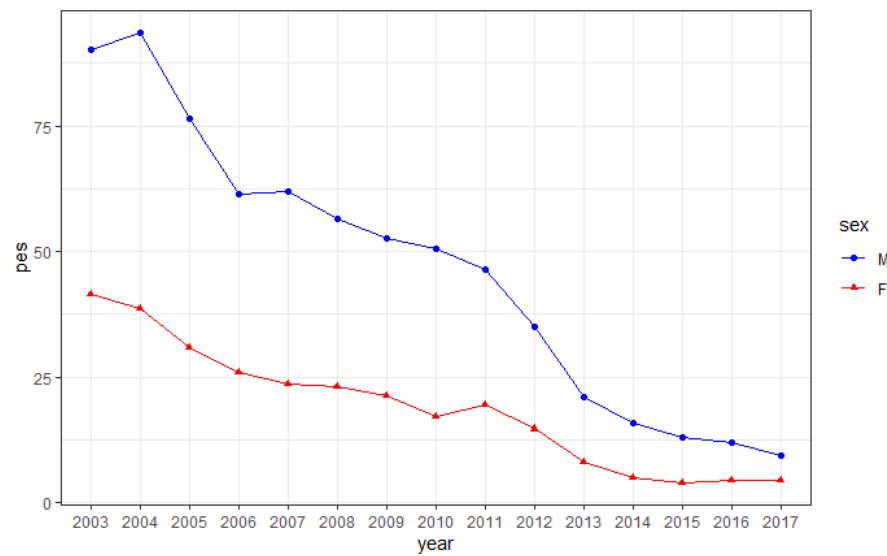
¹The reference populations of 2005, 2010, and 2015 were used for each five-year period (2003-2007, 2008-2012, and 2013-2017). **M-P**: Manager-Professional, **O-S-T**: Officer-Service-Trade, **A-F-F**: Agriculture-Forestry-Fishery, **USLUSL**: Unskilled manual labor.

Supplementary Table 7. The time trends of three major economic indicators in percentage (%), which are the real gross domestic product (RGDP), the unemployment rate (UnR), and the rate of customers price index (CPI) from one year to the next.

Year	RGDP	UnR	CPI
2003	3.1	3.7	3.5
2004	5.2	3.8	3.6
2005	4.3	3.9	2.8
2006	5.3	3.6	2.2
2007	5.8	3.4	2.5
2008	3	3.3	4.7
2009	0.8	3.8	2.8
2010	6.8	3.8	2.9
2011	3.7	3.5	4
2012	2.4	3.3	2.2
2013	3.2	3.2	1.3
2014	3.2	3.6	1.3
2015	2.8	3.7	0.7
2016	2.9	3.8	1
2017	3.2	3.8	1.9

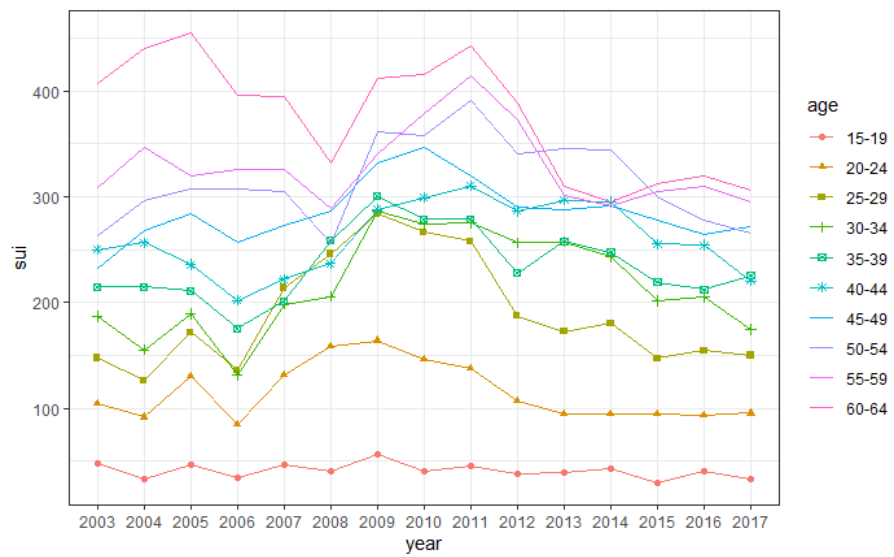


(a) Crude rates of overall suicide by sex

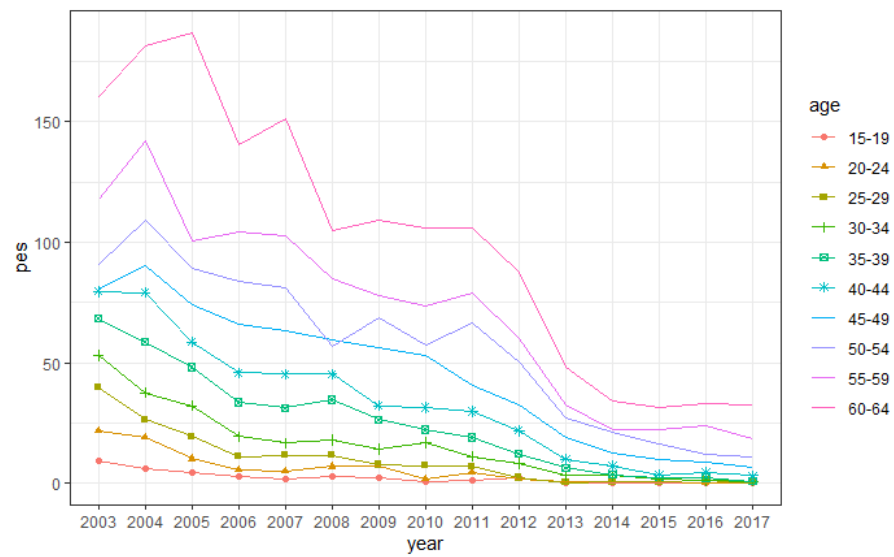


(b) Crude rates of suicide by pesticide by sex

Supplementary Figure 1. The overall suicide and suicide by pesticide rates by sex of the population age 15-64, including workers and non-workers, per 1,000,000.



(a) Crude rates of suicide overall by age



(b) Crude rates of suicide by pesticide by age

Supplementary Figure 2. The suicide overall and suicide by pesticide rates by age of the population age 15-64, including workers and non-workers, per 1,000,000.