

1 *Supplementary Material*

2 **A tunable nanoplatform of nanogold functionalised**  
3 **with angiogenin peptides for anti-angiogenic therapy**  
4 **of brain tumours**

5

6 **Irina Naletova<sup>1</sup>, Lorena Maria Cucci<sup>2</sup>, Floriana D'Angeli<sup>3</sup>, Carmelina Daniela Anfuso<sup>3</sup>, Antonio**  
7 **Magrì<sup>4</sup>, Diego La Mendola<sup>1,5,\*</sup>, Gabriella Lupo<sup>3,\*</sup> and Cristina Satriano<sup>1,2,\*</sup>**

8 <sup>1</sup> Consorzio Interuniversitario di Ricerca in Chimica dei Metalli nei Sistemi Biologici (CIRCMSB), Via Celso  
9 Ulpiani 27, I-70126 Bari, Italy; [irina\\_naletova@yahoo.com](mailto:irina_naletova@yahoo.com)

10 <sup>2</sup> Hybrid NanobioInterfaces Lab (NHIL), Department of Chemical Sciences, University of Catania, Viale  
11 Andrea Doria 6, I-95125 Catania, Italy; [lorena.cucci@unict.it](mailto:lorena.cucci@unict.it)

12 <sup>3</sup> Department of Biomedical and Biotechnological Sciences, University of Catania, Via Santa Sofia 89, I-95123  
13 Catania, Italy; [fdangeli@unict.it](mailto:fdangeli@unict.it); [daniela.anfuso@unict.it](mailto:daniela.anfuso@unict.it)

14 <sup>4</sup> Institute of Crystallography Catania, National Council of Research (IC-CNR), Via Paolo Gaifami 18, I-95126  
15 Catania, Italy; [leotony@unict.it](mailto:leotony@unict.it)

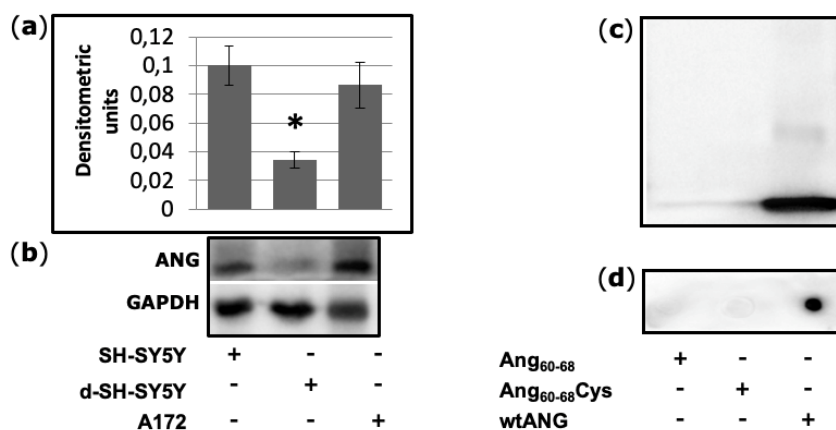
16 <sup>5</sup> Department of Pharmacy, University of Pisa, via Bonanno Pisano 6, I-56126 Pisa, Italy

17

18 \* Correspondence: [lamendola@farm.unipi.it](mailto:lamendola@farm.unipi.it), Tel.: +39- 050-2219533 (D.L.M.); [gabriella.lupo@unict.it](mailto:gabriella.lupo@unict.it), Tel.:  
19 +39-095-4781158 (G.L.); [csatriano@unict.it](mailto:csatriano@unict.it), Tel.: +39-095-7385136 (C.S.)

20 2.1.1. Determination of ANG expression in glioblastoma A172, undifferentiated and differentiated  
 21 neuroblastoma SH-SY5Y cell lines.

22



23

24 **Figure S1.** Densitometric analyses (a) and representative Western blot (b) of SH-SY5Y, differentiated  
 25 SH-SY5Y and A172 cell lysates. Representative Western (a) and dot (b) blotting of Ang<sub>60-68</sub>, Ang<sub>60-68</sub>Cys  
 26 and ANG. Nitrocellulose membranes were incubated with anti-angiogenin antibody. Each dot for  
 27 Dot Blot analysis was loaded with 2  $\mu$ l of protein or peptide samples with concentration 0.2 mg/mL.  
 28 The bars represent means  $\pm$  SD of three independent experiments performed in triplicate (S.D. =  
 29 standard deviation). Statistically significant differences, determined by one-way ANOVA are  
 30 indicated: \* $p \leq 0.05$  versus both, undifferentiated SH-SY5Y and A172 cells.