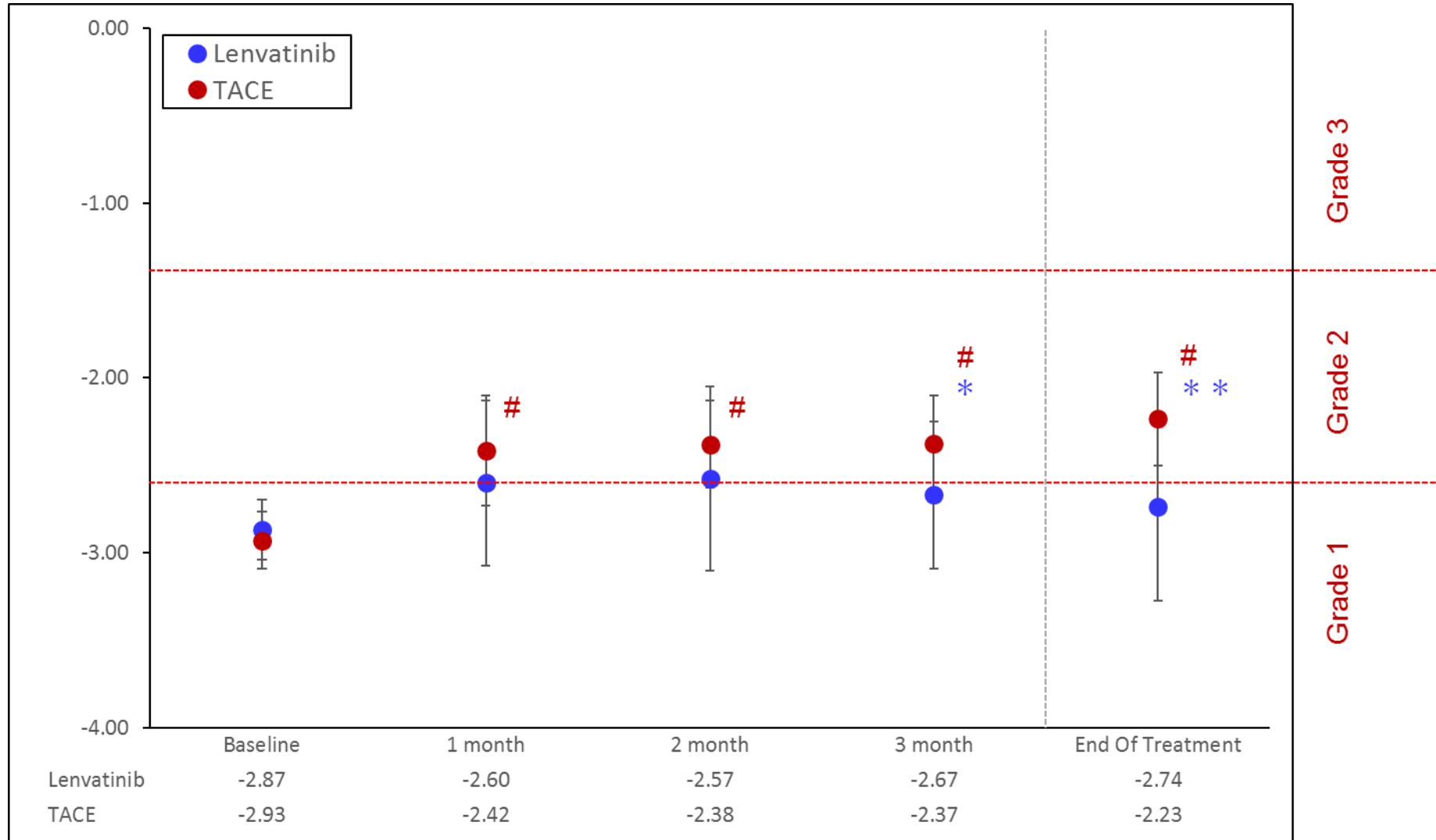
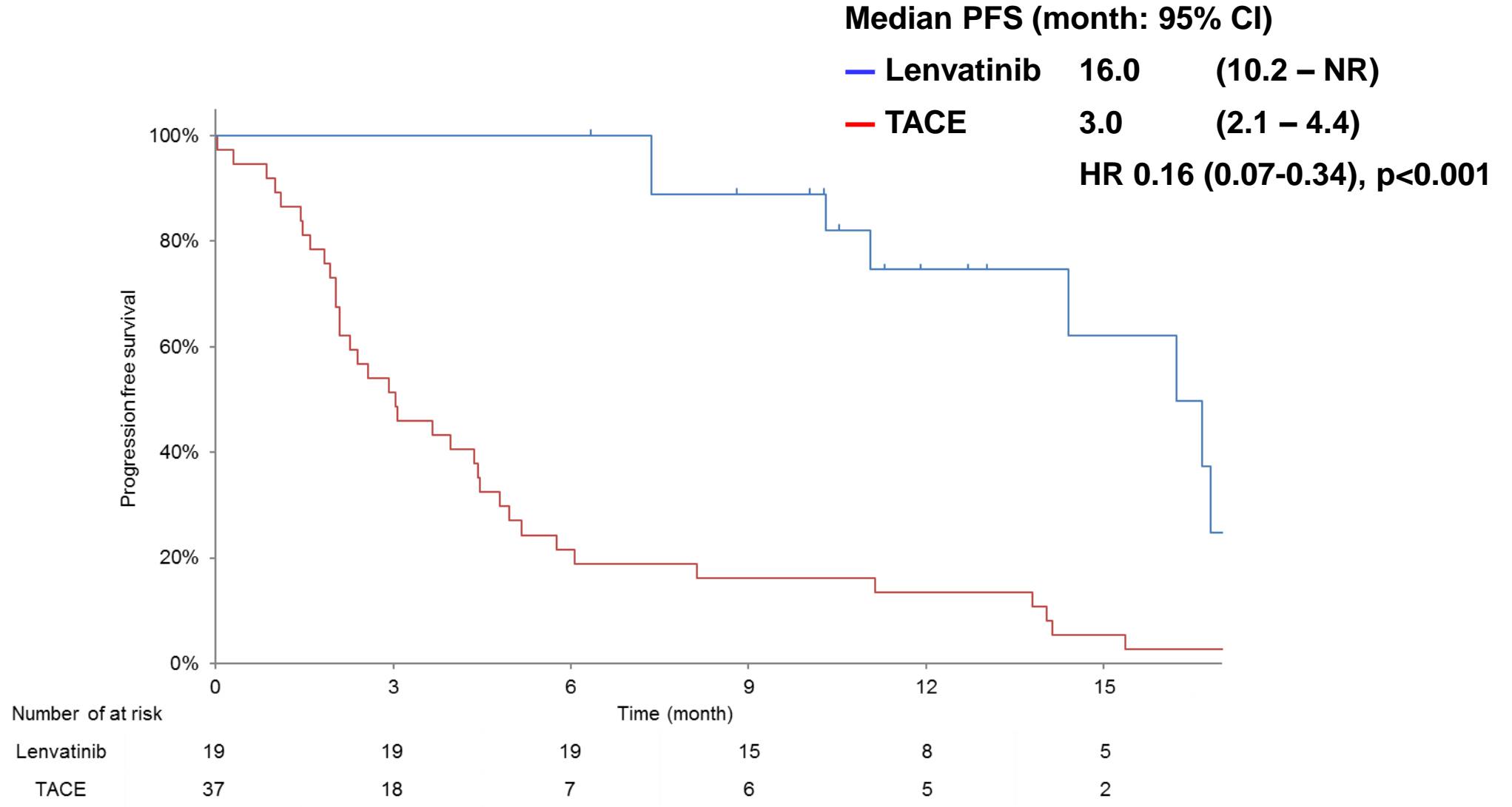


# Supplementary Figure.1 ALBI score over time in patients with ALBI grade 1 treated by Lenvatinib (n=19) or TACE (n=37) (propensity score matched results)



\* p<0.05 (Lenvatinib vs. TACE)  
\*\* p<0.01 (Lenvatinib vs. TACE)  
# p<0.01 (vs. TACE at baseline)

# Supplementary Figure.2 Progression Free Survival (ALBI grade 1; propensity score matched)



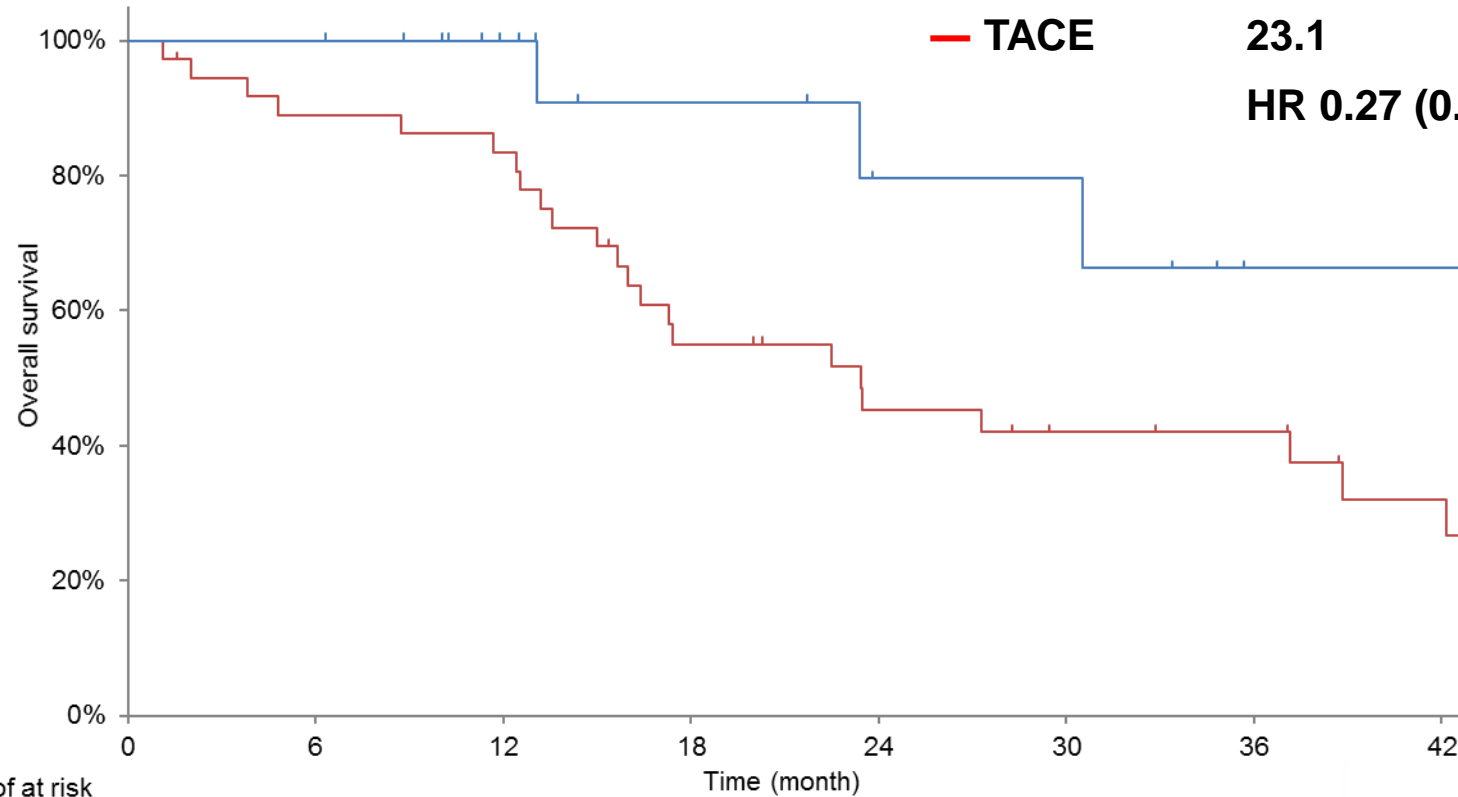
# Supplementary Figure.3 Overall Survival (ALBI grade 1; propensity score matched)

Median OS (month: 95% CI)

— Lenvatinib NR (23.1 - NR)

— TACE 23.1 (15.4 – 38.4)

HR 0.27 (0.08 – 0.89), p=0.021



Number of at risk	0	6	12	18	24	30	36	42
Lenvatinib	19	19	13	9	6	6	2	2
TACE	37	32	30	19	14	11	10	5

**Supplementary Table 1. Objective Response Rate (propensity score matched)  
(ALBI grade 1; propensity score matched)**

	<b>Lenvatinib n = 19 (%)</b>	<b>TACE n = 37 (%)</b>	<b>P-value Odds ratio (95%CI)</b>
<b>ORR</b>	<b>14 (73.7%)</b>	<b>14 (37.8%)</b>	<b>P&lt;0.05 4.47 (1.19 – 19.51)</b>
<b>CBR (CR + PR + SD ≥24w)</b>	<b>19 (100.0%)</b>	<b>16 (36.7%)</b>	
<b>DCR</b>	<b>19 (100.0%)</b>	<b>22 (55.0%)</b>	
<b>CR</b>	<b>1</b>	<b>4</b>	
<b>PR</b>	<b>13</b>	<b>10</b>	
<b>SD</b>	<b>5</b>	<b>8</b>	
<b>Durable stable disease (SD ≥24w)</b>	<b>5</b>	<b>2</b>	
<b>PD</b>	<b>0</b>	<b>13</b>	
<b>NE</b>	<b>0</b>	<b>2</b>	

ORR; objective response rate, CBR; clinical benefit rate, DCR; disease control rate, CR; complete response rate, PR; partial response, SD; stable disease, PD; progressive disease, NE; not evaluable